

Confederate States of America  
Postmasters' Provisional Stamps

PRESS PRINTED ENVELOPES



LAIID PAPER  
LOOKS GENUINE  
NO REFERENCE



16X13  
54 BLUE, Orange  
ENTIRE / \$4,100



16X1



66X1 WOVE PAPER  
PITTSYLVANIA COURT HOUSE,  
VIRGINIA  
TYPESET ADHESIVE  
\$ 6,000

Confederate States of America  
Postmasters' Provisional Stamps

supplied as they should be, to all offices, they will represent the entire revenues of the Department.

There is a peculiar delusion resting on the minds of many that almost any kind of engraving will answer for postage stamps, and in support of this opinion, reference is frequently made to the fact that postmasters of different cities and towns have procured stamps for their offices. These are made upon wood or stone or lead or are electrotyped. Stamps prepared by either of these modes can be counterfeited with great facility by a mere tyro in the art of engraving and the Department could not risk its revenues on such slender security without disregarding the public interest.

Naturally, the values most in demand were 5 cents and 10 cents, which were the amounts for prepayment of postage on letters. The stamps issued by Postmasters were nearly all of one of the other of these two denominations, 2 cents stamps only being required for drop letters and certain classes of printed matter.

These stamps were being printed continually by Messrs. Hoyer & Ludwig of Richmond.

Early in 1862 the stamps from London, which were the 1 cent and 5 cents values, began to arrive, but because of the advance rate of second class mail from 1 cent to two cents, this stamp was never put into use. These stamps were engraved and were printed from plates of 100, 10 by 10.

In March of 1862, for some reason, there was a change made in the color of the stamps. The 5 cents was made blue instead of green and the 10 cents rose instead of blue. Later, however, about July, the 10 cents was again re-issued in blue.

There was much need for two cents values for preparing the rate on drop letters, also on newspapers and printed matter not weighing more than 3 ozs. This value appeared sometime in March, 1862. They were printed in sheets of 100, 10 by 10, unperforated. The color is green. As has been noticed, much trouble was manifested in getting a sufficient amount of stamps to supply the demand. This was largely due to the fact that a great many of the stamps and plates that were shipped from London by Messrs. De La Rue & Co. were seized by the Federal ships on

(Continued on next page)

Reference List  
BRIDGEVILLE, Ala.



TYPE 1

Handstamped on thick white wove paper  
Handruled into squares in red ink

1 T1 5 cents black

CHARLESTON, S. C.

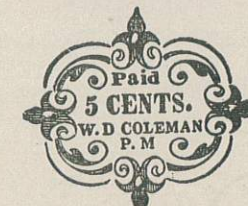


TYPE 1

Lithographed on white wove paper

1 T1 5 cents blue  
2 T1 5 cents blue gray

DANVILLE, Va.



TYPE 1

1 T1 5 cents red  
Two varieties are known

EMORY, Va.

PAID



TYPE 1

Perforated 15 on three sides  
Handstamped on margins of sheets of  
1c postage of 1857

1 T1 5 cents blue



Confederate States of America  
Postmasters' Provisional Stamps



*genuine*

KNOXVILLE, TENN.  
47 X 1 #1,250  
Grayish laid paper  
brick red



56 X 2 250- ✓



2 DIAMOND ARE  
COMPLETE UNDER NUMERAL  
5 ✓



*fake*

Confederate States of America  
Postmaster's Provisional Stamps  
Reference List

KNOXVILLE, Tenn.

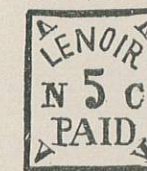


TYPE 1

Typographed on grayish laid paper

- 1 T1 5 cents brick red
- 2 T1 5 cents deep carmine
- 3 T1 10 cents green

LENOIR, N. Car.



TYPE 1

Handstamped on white wove paper  
Ruled with orange lines forming oblongs

- 1 T1 5 cents blue

LIVINGSTON, Ala.



TYPE 1

Typographed on white wove paper

- 1 T1 5 cents blue

LYNCHBURG, Va.



TYPE 1

Typographed on white wove paper

- 1 T1 5 cents blue

MACON, Ga.



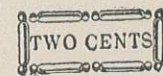
TYPE 1



TYPE 2



TYPE 3



TYPE 4

Type set. Colored wove paper

- 1 T1 5 cents black on gray blue
- 2 T1 5 cents black on gray green
- 3 T1 5 cents black on gray green
- 4 T2 5 cents deep blue on yellow
- 5 T2 5 cents black on yellow
- 6 T3 5 cents black on yellow
- 7 T4 2 cents green on gray green

There are numerous varieties of  
setting of all the four types





62X5 258



61 X4 (GRAY SHADES)  
GRAY BLUE RIBBED PAPER  
\$950 - X



56 X MEMPHIS, Tenn.  
100 - X



62X36 OCHER 625  
OF  
62X5 YELLOW BROWN 240  
DOT IN L. OF ORLEANS



62X1 200-  
BREAK IN NUMERAL  
FRAME AT TOP



62X2 175  
A ORIG. GUM  
POS. 30  
Strong cornmeal flaw



62 X4 RED BROWN ON BLUISH



62X4  
200-



58 X2 (MEMPHIS)

# Confederate States of America Postmasters' Provisional Issues Reference List

## MARION, Va.



TYPE 1

Type set. Handstamped  
Thick white wove paper

- 1 T1 5 cents black
- 2 T1 10 cents black

## MEMPHIS, Tenn.



TYPE 1



TYPE 2

Thin white wove paper

- 1 T1 2 cents pale blue
- 2 T1 2 cents blue
- 3 T1 2 cents dark blue
- 4 T2 5 cents red
- 5 T2 5 cents rose
- 6 T2 5 cents carmine

Varieties

- 5 cents on Pelure paper
- 5 cents in tete-beche pairs

## MOBILE, Ala.

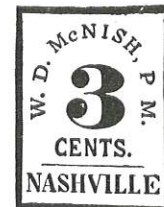


TYPE 1

White wove paper

- 1 T1 2 cents black
- 2 T1 5 cents blue

## NASHVILLE, Tenn.



TYPE 1



TYPE 2

Yellowish white wove paper

- 1 T1 3 cents carmine
- Several varieties of setting
- 2 T2 5 cents carmine
- 3 T2 5 cents brick red
- 4 T2 5 cents gray
- 5 T3 5 cents violet
- 6 T2 10 cents green

Varieties

"Tete-beche" pairs

## NEW ORLEANS, La.



TYPE 1



TYPE 2

Lithographed.

Thin white wove paper

- 1 T1 2 cents blue
- 2 T1 2 cents pale blue
- 3 T1 2 cents red
- 4 T1 2 cents scarlet
- 5 T2 5 cents brown
- 6 T2 5 cents red

Bluish wove paper

- 7 T2 5 cents brown

Thick yellowish white paper

- 8 T2 5 cents brown

There is a small figure "8" within the figure  
"5" which varies in each stamp on the sheet  
of forty

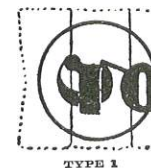


Confederate States of America  
Postmasters' Provisional Stamps



Confederate States of America  
Postmasters' Provisional Stamps  
Reference List

NEW SMYRNA, Fla.



Handstamped on white paper  
Ruled with colored lines

- 1 T1 5 cents black
- 2 T1 10 cents on 5 cents black

PETERSBURG, Va.



Type set. Thick wove paper  
1 T1 5 cents red  
There are 10 varieties of setting

PITTSYLVANIA, C. H., Va.



1 T1 5 cents red  
There are several varieties of setting

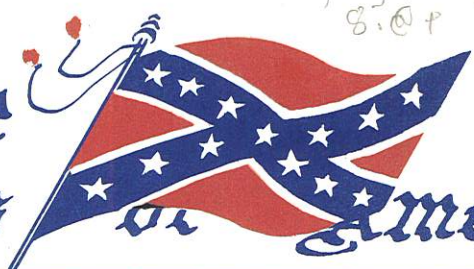
PLEASANTSHADE, Va.



Type set  
1 T1 5 cents blue  
There are several varieties of setting



Single Stamp  
87.01



\*7 Made in  
Richmond by  
Archert-Daly  
from plate  
made by  
De La Rue & Co  
"Richmond  
Print"  
Single 75



A block of Richmond  
prints as fine as this rarely  
to be had

Block  
7<sup>00</sup>

#6 Super 6 Block

singles in shades of #11



\*11



11



15



1



其



一

And singles of  $\pi_2$



410



一、



\*



办

For differences  
between #11 + #12  
Compare upper  
corner ornaments  
Also compare  
"Hair Cuts" and  
"Beard Trims"  
Heads in #12 are  
somewhat larger.

As made late in  
the war by  
Kearns & Ball  
Columbia S.C.



11 并

13.1

32


$$4/12 K + B$$

Note  
Crude work  
Poorly cleaned  
plates etc  
The page figures

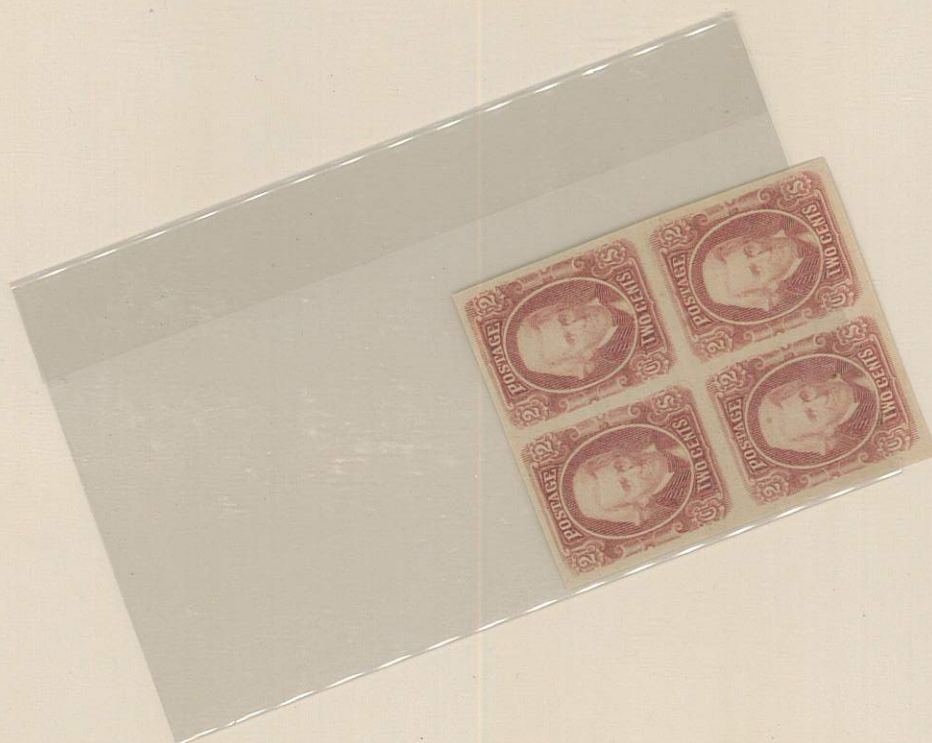
Pair  
too nice  
to cut

Note K  
of Kentinga 134  
Imprint

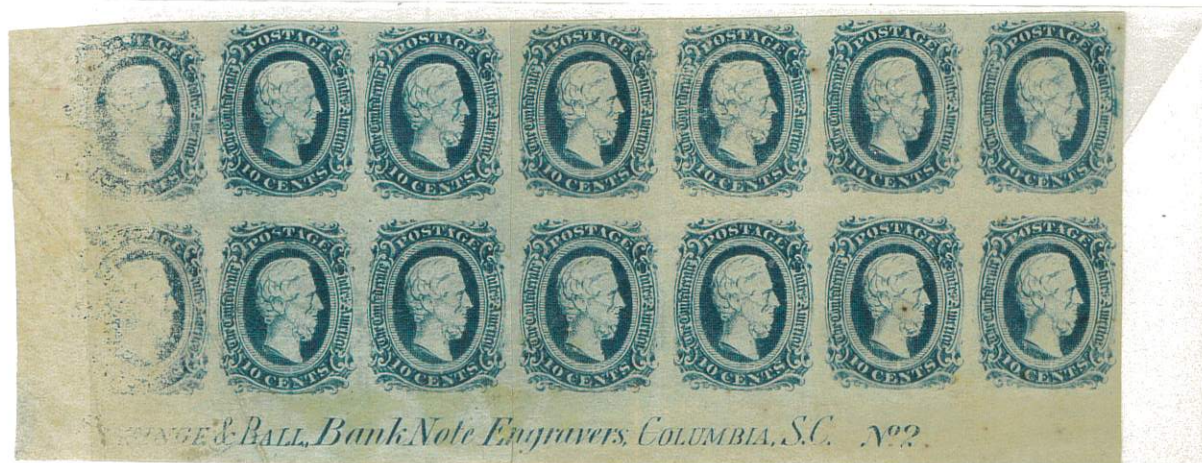
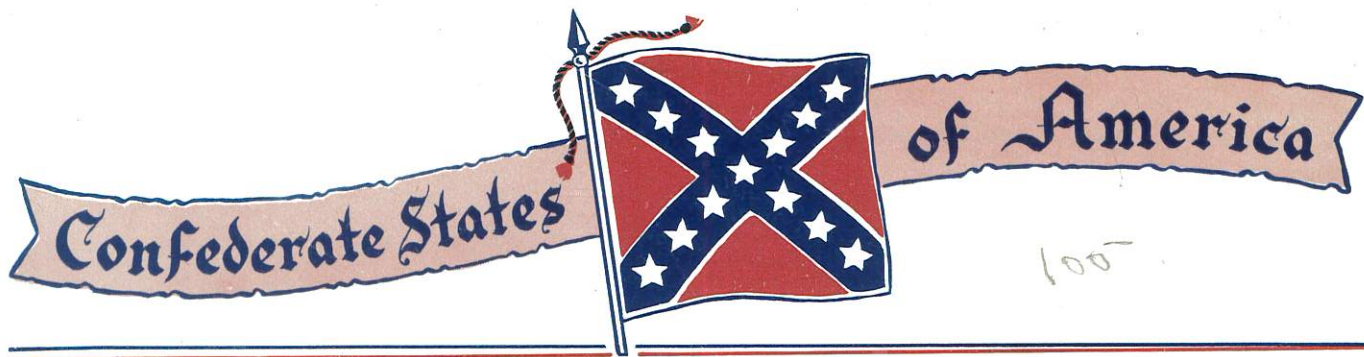
Prices      1954[illegible]



75+



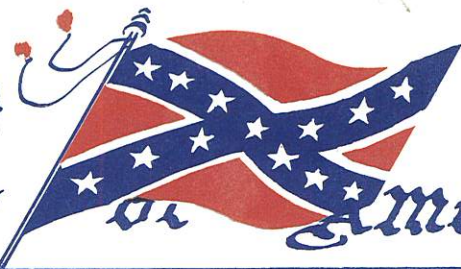




200 +



# Confederate States of America



#11 K + B

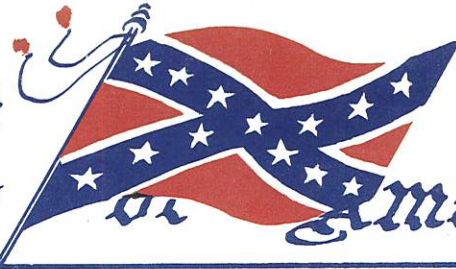
Academy  
MIAMI

COPYRIGHT, 1955, BY ACADEMY STAMPS, INC. MADE IN U.S.A.



4573

# Confederate States of America



Shades  
of  
#12



K + B  
Columbia  
S.C.

Academy  
MIAMI



