

The Weekly Tribune.

NEW-YORK, WEDNESDAY, AUG. 21, 186

TERMS OF THE TRIBUNE.

DAILY TRIBUNE, Mail Subscribers, \$10 per annum.
SEMI-WEEKLY TRIBUNE, Mail Subscribers, \$4 per



with the out. Mr. Disraeli will
and may entice into his net
who have broken through Mr.
es. When both dinners have
d (the latter is not a quick pro-
the heavily-spread tables of
formers may shake hands and
e task of redistribution—what
merica redistricting—the de-
education, for Irish reform,
ed reforms beside, are scarce-
what has been accomplished.
n the humblest agents of the
in England to be wrangling
cannot have a monopoly of
the Tories are to have, also,
g, a Reform banquet all to
lee Mr. Disraeli will explain
why the Tories ought to be
as which, by many of them,



to his old college. Mr.
Prince himself describes
of Florence as follows:

"DEAR LOWENSTEIN—I
a few lines, to thank you
January, which I received.
But you know that the be-
rarely carried out, and t
writing.

"Oh! Florence, where I
gathered to herself noble
quite intoxicated with del
the galleries. The country
extraordinary attractions.
entirely into the whirl of
sellschaften). I have danc
ments, have been introdu
introduced to me; have s
hausted all remarks about
amiable—and, in short, h
vais jeu. You know my
not therefore, admiring m

276
R. J. L.

DAILY TRIBUNE.
ISMENTS, Classified
NTY CENTS per line each insertion.
ENTS each insertion.
ements charged solid space.
—THIRTY CENTS per line each
NINETY CENTS each insertion.
arged THIRTY CENTS per line
ess than ONE DOLLAR each in-

URTH PAGE—FIFTY
erted for less than ONE DOL-

n City News Col-
space. Nothing inserted for



VOL. X

The A

NEW

Buckeye Stages System NEWSPAPER STAMP

Good for the transportation of One Package of Newspapers, the weight of each package being as indicated by the amount of stamp or less.

STAMP MUST BE
AFFIXED TO PACKAGE
BY SHIPPER

142530

Subject to all tariff rules and regulations governing the transportation of newspapers as on file with the Public Utilities Commission of Ohio.
O. M. CROTTY PRES. & GEN. MGR.

Form No. NS

Buckeye Stages System NEWSPAPER STAMP

Good for the transportation of One Package of Newspapers, the weight of each package being as indicated by the amount of the stamp or less.

STAMP MUST BE
AFFIXED TO PACKAGE
BY SHIPPER

47153

Subject to all tariff rules and regulations governing the transportation of newspapers as on file with the Public Utilities Commission of Ohio.

O. M. Crotty
V. Pres. & Gen. Mgr.

Form No. NS

Buckeye Stages System NEWSPAPER STAMP

Good for the transportation of One Package of Newspapers, the weight of each package being as indicated by the amount of stamp or less.

STAMP MUST BE
AFFIXED TO PACKAGE
BY SHIPPER

70806

Subject to all tariff rules and regulations governing the transportation of newspapers as on file with the Public Utilities Commission of Ohio.
O. M. CROTTY PRES. & GEN. MGR.

Form No. NS

Buckeye Stages System NEWSPAPER STAMP

Subject to all tariff rules and regulations governing the transportation of newspapers as on file with the Public Utilities Commission of Ohio.

O. M. CROTTY,
President

A 25073

STAMP MUST BE
AFFIXED TO PACKAGE
BY SHIPPER

Buckeye Stages System NEWSPAPER STAMP

Subject to all tariff rules and regulations governing the transportation of newspapers as on file with the Public Utilities Commission of Ohio.

O. M. CROTTY,
President

A 9917

STAMP MUST BE
AFFIXED TO PACKAGE
BY SHIPPER

Buckeye Stages System NEWSPAPER STAMP

Good for the transportation of One Package of Newspapers, the weight of each package being as indicated by the amount of the stamp or less.

STAMP MUST BE
AFFIXED TO PACKAGE
BY SHIPPER

30321

Subject to all tariff rules and regulations governing the transportation of newspapers as on file with the Public Utilities Commission of Ohio.

O. M. Crotty
V. Pres. & Gen. Mgr.

Form No. NS

Buckeye Stages System NEWSPAPER STAMP

Good for the transportation of One Package of Newspapers, the weight of each package being as indicated by the amount of the stamp or less.

STAMP MUST BE
AFFIXED TO PACKAGE
BY SHIPPER

64924

Subject to all tariff rules and regulations governing the transportation of newspapers as on file with the Public Utilities Commission of Ohio.

Form No. NS

Mr G W Perry

To the POST OFFICE, Dover, N. H., Dr.,

To Box No. 698 for Quarter ending March 31,

\$.25

To Newspaper Postage for Quarter ending March 31,

.25
30

RECEIVED PAYMENT,

GEORGE W. COLBATH, Post Master.

Dover, Jan. 1, 1873.

AMERICAN EXPRESS CO.

PREPAID NEWSPAPER STAMP.

TO ALL POINTS REACHED BY THIS COMPANY, AND ON FOLLOWING CONDITIONS:

If the package to which this Stamp is affixed contains any other matter than NEWSPAPERS, or weighs more than the limit represented by face of Stamp, the Company reserve the right to charge full rates without regard to Stamps affixed.

PREPAID FOR

1 lb. *Cha. H. Clark*
TREAS.

AMERICAN EXPRESS CO.

PREPAID NEWSPAPER STAMP.

TO ALL POINTS REACHED BY THIS COMPANY, AND ON FOLLOWING CONDITIONS:

If the package to which this Stamp is affixed contains any other matter than NEWSPAPERS, or weighs more than the limit represented by face of Stamp, the Company reserve the right to charge full rates without regard to Stamps affixed.

PREPAID FOR

2 lb. *Cha. H. Clark*
TREAS.

AMERICAN EXPRESS CO.

PREPAID NEWSPAPER STAMP.

TO ALL POINTS REACHED BY THIS COMPANY, AND ON FOLLOWING CONDITIONS:

If the package to which this Stamp is affixed contains any other matter than NEWSPAPERS, or weighs more than the limit represented by face of Stamp, the Company reserve the right to charge full rates without regard to Stamps affixed.

PREPAID FOR

3 lb. *Cha. H. Clark*
TREAS.

AMERICAN EXPRESS CO.

PREPAID NEWSPAPER STAMP.

TO ALL POINTS REACHED BY THIS COMPANY, AND ON FOLLOWING CONDITIONS:

If the package to which this Stamp is affixed contains any other matter than NEWSPAPERS, or weighs more than the limit represented by face of Stamp, the Company reserve the right to charge full rates without regard to Stamps affixed.

PREPAID FOR

4 lb. *Cha. H. Clark*
TREAS.

AMERICAN EXPRESS CO.

PREPAID NEWSPAPER STAMP.

TO ALL POINTS REACHED BY THIS COMPANY, AND ON FOLLOWING CONDITIONS:

If the package to which this Stamp is affixed contains any other matter than NEWSPAPERS, or weighs more than the limit represented by face of Stamp, the Company reserve the right to charge full rates without regard to Stamps affixed.

PREPAID FOR

5 lb. *Cha. H. Clark*
TREAS.

AMERICAN EXPRESS CO.

PREPAID NEWSPAPER STAMP.

TO ALL POINTS REACHED BY THIS COMPANY, AND ON FOLLOWING CONDITIONS:

If the package to which this Stamp is affixed contains any other matter than NEWSPAPERS, or weighs more than the limit represented by face of Stamp, the Company reserve the right to charge full rates without regard to Stamps affixed.

PREPAID FOR

10 lb. *Cha. H. Clark*
TREAS.

AMERICAN EXPRESS CO.

PREPAID NEWSPAPER STAMP.

TO ALL POINTS REACHED BY THIS COMPANY, AND ON FOLLOWING CONDITIONS:

AMERICAN EXPRESS CO.

PREPAID NEWSPAPER STAMP.

219

AMEX-S281

220

AMEX-S296

Price

AMERICAN EXPRESS CO.

PREPAID NEWS

To all points reached by this Company in Pennsylvania, Ohio, Indiana, Kentucky, Michigan, Illinois, Wisconsin, Minnesota, Iowa, Missouri, Dakota.

CONTENTS

If the Package contains any other matter than that named above, and is not PREPAID according to the following RATES and WEIGHTS, agents are instructed to charge full rate in addition to this stamp.

Over	2 1/2	lbs. or under,	5	Cents.
"	5	"	to 5 lbs.	10
"	10	"	to 10 "	15
"	15	"	to 15 "	20
"	20	"	to 20 "	25
"	25	"	to 25 "	30
"	30	"	to 30 "	35
"	35	"	to 35 "	40
"	40	"	to 40 "	45
"	45	"	to 45 "	50
"	50	"	to 50 "	55

Eric Jackson

AMERICAN EXPRESS CO.

PREPAID NEWSPAPER PARCEL STAMP.

To all points reached by this Company in Pennsylvania, Ohio, Indiana, Kentucky, Michigan, Illinois, Wisconsin, Minnesota, Iowa, Missouri, Dakota.

CONTENTS, NEWSPAPERS and MAGAZINES.

If the Package contains any other matter than that named above, and is not PREPAID according to the following RATES and WEIGHTS, agents are instructed to charge full rate in addition to this stamp.

Over	2 1/2	lbs. or under,	5	Cents.
"	5	"	to 5 lbs.	10
"	10	"	to 10 "	15
"	15	"	to 15 "	20
"	20	"	to 20 "	25
"	25	"	to 25 "	30
"	30	"	to 30 "	35
"	35	"	to 35 "	40
"	40	"	to 40 "	45
"	45	"	to 45 "	50
"	50	"	to 50 "	55

Alex Holland
TREAS.

American Bank Note Co., 142 Broadway, N. Y.

Eric Jackson

www.ericjackson.com

United States Railroad Administration
Director General of Railroads
CHICAGO & NORTH WESTERN RAILWAY

NEWSPAPER STAMP

Good for Transportation of One Package of Newspapers of
1 pound or less weight.

It is agreed that an additional 1-cent stamp shall
be affixed for every additional 1 pound or less.

This package is forwarded entirely at the risk
of the publisher



H. G. GRAVES,

General Baggage Agent

Form D N Series 21

United States Railroad Administration
Director General of Railroads
CHICAGO & NORTH WESTERN RAILROAD

NEWSPAPER STAMP

Good for Transportation of One Package of Newspapers of
2 pounds or less weight.

It is agreed that additional stamps shall be affixed
for every additional pound or less.

This package is forwarded entirely at the risk
of the publisher



H. G. GRAVES,

General Baggage Agent

Form D N Series 21

United States Railroad Administration
Director General of Railroads
CHICAGO & NORTH WESTERN RAILROAD

NEWSPAPER STAMP

Good for Transportation of One Package of Newspapers of
5 pounds or less weight.

It is agreed that additional stamps shall be affixed
for every additional pound or less.

This package is forwarded entirely at the risk
of the publisher



H. G. GRAVES,

General Baggage Agent

Form D N Series 28

Chicago & North Western Railway Co.

NEWSPAPER STAMP

Good for Transportation of One Package of Newspapers of
10 pounds or less weight.

It is agreed that additional stamps shall be affixed
for every additional pound or less.

This package is forwarded entirely at the risk
of the publisher



H. G. GRAVES,

General Baggage Agent

Form D N Series 8

United States Railroad Administration
Director General of Railroads
CHICAGO & NORTH WESTERN RAILROAD

NEWSPAPER STAMP

Good for Transportation of One Package of Newspapers of
25 pounds or less weight.

It is agreed that additional stamps shall be affixed
for every additional pound or less.

This package is forwarded entirely at the risk
of the publisher



H. G. GRAVES,

General Baggage Agent

Form D N Series 7

Chicago & North Western Railway Co.

**INTERSTATE
NEWSPAPER STAMP**

Good for Transportation of One Package of Newspapers of
25 pounds or less weight.

It is agreed that additional stamps shall be affixed
for every additional pound or less.

This package is forwarded entirely at the risk
of the publisher



H. G. GRAVES,

General Baggage Agent

Form D N Series 1

DENVER, COLORADO
SPRINGS, PUEBLO
MOTOR WAY, INC.
NEWSPAPER
CARRYING STAMP
1 POUND

1818

R. F. Bennett
General Manager

DENVER, COLORADO
SPRINGS, PUEBLO
MOTOR WAY, INC.
NEWSPAPER
CARRYING STAMP
5 POUNDS

730

R. F. Bennett
General Manager

DENVER, COLORADO
SPRINGS, PUEBLO
MOTOR WAY, INC.
NEWSPAPER
CARRYING STAMP
10 POUNDS

772

R. F. Bennett
General Manager

DENVER, COLORADO
SPRINGS, PUEBLO
MOTOR WAY, INC.
NEWSPAPER
CARRYING STAMP
20 POUNDS

496

R. F. Bennett
General Manager

FOR
1 NEWSPAPER ONLY
Carried at Owner's Risk.

GREAT WESTERN RAILWAY
No. **831280**

TO BE CALLED FOR BY CON-
SIGNEE AT THE STATION TO
WHICH IT IS ADDRESSED.
The Company reserves the right
of opening and surcharging
if insufficiently stamped.

PREPAID Newspaper
Stamp
Good for Shipment of

1 Pound

of newspapers on the
lines of
Southeastern Greyhound
Lines

7013

Form
203 *J. M. Zander*
V.P. Traffic

THE
SOUTHERN LIMITED, INC.
NEWSPAPER COUPON

300 **5c**

John M. Fitzgerald
President

EDWARDS MOTOR TRANSIT CO., Inc.

**NEWSPAPER
TRANSPORTATION 5c**

Good for 5 pounds newspapers or fraction thereof

A **1501**

J. W. Edwards
Traffic Mgr.

Pacific Electric Railway Company

**ONE
BUNDLE**

311

Form N P. 10

10

**NEWS
PAPERS**

W. H. Smith
Traffic Manager

VOID WHEN CONDUCTOR'S CHECK IS DETACHED.

Cincinnati & Lake Erie Bus Company

**ONE POUND
NEWSPAPER TICKET**

Good for the transportation of one package of Newspapers
weighing One Pound or less to any station on
The Cincinnati and Lake Erie Bus Company's Lines

Drivers will receive this package and deliver it to agent at
destination, who will deliver it to consignee when called for.
Should no Agent be on duty, Drivers will de-
liver direct to addressee, if on hand to receive it

79243

Form N. P. 1 *J. M. Zander*
PRESIDENT

➡ This Ticket Must be Pasted on the Package by the Shipper ⬅

THE TOLEDO TICKET CO., TOLEDO, OHIO

WFCX-S340

Price

ATLANTIC DEPARTMENT.

PREPAID STAMP

FOR CHARGES ON

NEWSPAPERS & MAGAZINES

266

USX-S331

Price

PREPAID NEWS PARCEL STAMP.

CONTENTS—Newspapers, Pamphlets, Magazines, and unbound matter. If parcel
than above enumerated, and is not prepaid according to fol-
full parcel rate in addition to

228

AMUX-S332

Price

AMERICAN
PREPAID
NEWSPAPER STAMPS

The charges on this package are prepaid over the Rail Road & Steamboat lines occupied by this **COMPANY** subject to the following Conditions.

1st That the contents of the same shall be Newspapers Books & Magazines ONLY.
2d That each Magazine weighing 4oz or under, shall be rated and paid for as two and a half Newspapers and in that proportion over that weight.
3d Bound Books weighing 4oz or fraction of same shall be rated as two and a half Newspapers.
4th That

222

AMEX-S313

Price

The logo for the American Express Company, featuring the words "AMERICAN EXPRESS CO." in a stylized, bold, serif font. The letters are white with black outlines, set against a dark background. The logo is flanked by decorative flourishes and is positioned at the bottom of the advertisement.

PREPAID NEWSPAPER STAMP

If the package to which this Stamp is affixed contains any other matter than **NEWSPAPERS** or weighs more than **100 Pounds** represented by the value of Stamp the Company reserve the right to charge full rate without regard to Stamps affixed.

PREPAID FOR

4

lb.

Chas. H. Clark
TREAS.

TREA'S

Eric Jackson

www.ericjackson.com



PREPAID NEWSPAPER STAMP.

TO ALL POINTS REACHED BY THIS COMPANY, AND ON FOLLOWING CONDITIONS:

If the package to which this Stamp is affixed contains any other matter than NEWSPAPERS, or weighs more than the limit represented by face of Stamp, the Company reserve the right to charge full rates without regard to Stamps affixed.

PREPAID FOR

3 lb. *Chas. H. Clark*
TREAS.



PREPAID NEWSPAPER STAMP.

TO ALL POINTS REACHED BY THIS COMPANY, AND ON FOLLOWING CONDITIONS:

If the package to which this Stamp is affixed contains any other matter than NEWSPAPERS, or weighs more than the limit represented by face of Stamp, the Company reserve the right to charge full rates without regard to Stamps affixed.

PREPAID FOR

2 lb. *Chas. H. Clark*
TREAS.

C., N. & L. R. R. CO.

Good for One First Class Passage

FROM

CHAPIN, S. C.

TO

LAURENS,

204

C. N. & L. R. R. CO.
PROSPERITY, S. C.

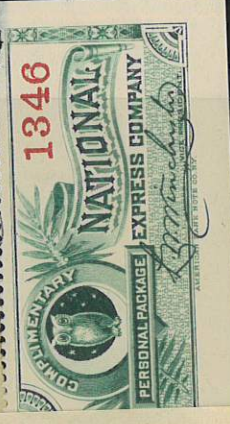
ISSUED BY
Columbia Newberry & Laurens R. R. Co.

CHAPIN, S. C. to
PROSPERITY, S. C.

Good for One
commencing not
after date of sa
regulations.

Form cd.

208



U.S. POSTAGE STAMP AGENCY
POSTMASTERS RECEIVING THIS PACKAGE
—WILL PLEASE—
NOTE ITS CONDITION.

If showing signs of having been tampered with, report the same and return this package to 3d Asst. P. M. General
Was shown



Thank you for your purchase. We hope to help you in the future, please let us hear from you. Feedback will be submitted to our office of same.

732-674-6756



DENVER, COLORADO
SPRINGS, PUEBLO
MOTOR WAY, INC.
NEWSPAPER
CARRYING STAMP
1 POUND

1797

R. F. Bennett
General Manager

DENVER, COLORADO
SPRINGS, PUEBLO
MOTOR WAY, INC.
NEWSPAPER
CARRYING STAMP
5 POUNDS

730

R. F. Bennett
General Manager

DENVER, COLORADO
SPRINGS, PUEBLO
MOTOR WAY, INC.
NEWSPAPER
CARRYING STAMP
10 POUNDS

774

R. F. Bennett
General Manager

AMERICAN EXPRESS CO.

PREPAID NEWSPAPER STAMP

TO ALL POINTS REACHED BY THIS COMPANY, AND ON FOLLOWING CONDITIONS:

If the package to which this Stamp is affixed contains any other matter than NEWSPAPERS, or weighs more than the limit represented by face of Stamp, the Company reserve the right to charge full rates without regard to Stamps affixed.

PREPAID FOR

2 lb.

Chas. H. Clark

AMERICAN EXPRESS CO.

PREPAID NEWSPAPER STAMP

TO ALL POINTS REACHED BY THIS COMPANY, AND ON FOLLOWING CONDITIONS:

If the package to which this Stamp is affixed contains any other matter than NEWSPAPERS, or weighs more than the limit represented by face of Stamp, the Company reserve the right to charge full rates without regard to Stamps affixed.

PREPAID FOR

3 lb.

AMERICAN EXPRESS CO.

PREPAID NEWSPAPER STAMP

TO ALL POINTS REACHED BY THIS COMPANY, AND ON FOLLOWING CONDITIONS:

If the package to which this Stamp is affixed contains any other matter than NEWSPAPERS, or weighs more than the limit represented by face of Stamp, the Company reserve the right to charge full rates without regard to Stamps affixed.

PREPAID FOR

3 lb.

Chas. H. Clark

AMERICAN EXPRESS CO.

PREPAID NEWSPAPER STAMP

TO ALL POINTS REACHED BY THIS COMPANY, AND ON FOLLOWING CONDITIONS:

If the package to which this Stamp is affixed contains any other matter than NEWSPAPERS, or weighs more than the limit represented by face of Stamp, the Company reserve the right to charge full rates without regard to Stamps affixed.

PREPAID FOR

5 lb.

Chas. H. Clark

AMERICAN EXPRESS CO.

PREPAID NEWSPAPER STAMP

TO ALL POINTS REACHED BY THIS COMPANY, AND ON FOLLOWING CONDITIONS:

If the package to which this Stamp is affixed contains any other matter than NEWSPAPERS, or weighs more than the limit represented by face of Stamp, the Company reserve the right to charge full rates without regard to Stamps affixed.

PREPAID FOR

1 lb.

Chas. H. Clark

Chicago & North Western Railway Co.

NEWSPAPER STAMP

Good for Transportation of One Package of 2 pounds or less weight.

It is agreed that additional stamps shall be affixed for every additional pound or less.

This package is forwarded entirely at the risk of the publisher

52754
2 cents.
H. G. GRAVES
General Baggage Agent

Form D N Series 22

Chicago & North Western Railway Co.

NEWSPAPER STAMP

Good for Transportation of One Package of 5 pounds or less weight.

It is agreed that additional stamps shall be affixed for every additional pound or less.

This package is forwarded entirely at the risk of the publisher

60715
5 cents.
H. G. GRAVES
General Baggage Agent

Form D N Series 29

Chicago & North Western Railway Co.

INTERSTATE
NEWSPAPER STAMP

Good for Transportation of One Package of Newspapers of 10 pounds or less weight.

It is agreed that additional stamps shall be affixed for every additional pound or less.

This package is forwarded entirely at the risk of the publisher

67414
10 pounds
H. G. GRAVES
General Baggage Agent

Form I D N Series 1

Merchants Union Express Company
PREPAID
NEWSPAPER STAMPS

The charges on this package are prepaid over the Rail Road & Steamboat lines occupied by this COMPANY, subject to the following Conditions:

1st That the contents of the same shall be Newspapers, Books & Magazines ONLY.
2nd That each Magazine weighing 4 oz. or under shall be rated and paid for as two and a half Newspapers and in that proportion over that weight.
3rd Bound Books weighing 4 oz. or fraction of same shall be rated each as five Newspapers.
4th That the number of papers or other equivalent based as above shall not exceed FIVE Newspapers.

That in case these conditions are not complied with the Company have the right to collect in addition to the cost of this Stamp the regular package rate to such point as the same may be destined.

For the Proprietors
C. P. Ross

Merchants Union Express Company
PREPAID
NEWSPAPER STAMPS

The charges on this package are prepaid over the Rail Road & Steamboat lines occupied by this COMPANY, subject to the following Conditions:

1st That the contents of the same shall be Newspapers, Books & Magazines ONLY.
2nd That each Magazine weighing 4 oz. or under shall be rated and paid for as two and a half Newspapers and in that proportion over that weight.
3rd Bound Books weighing 4 oz. or fraction of same shall be rated each as five Newspapers.
4th That the number of papers or other equivalent based as above shall not exceed ONE HUNDRED Newspapers.

That in case these conditions are not complied with the Company have the right to collect in addition to the cost of this Stamp the regular package rate to such point as the same may be destined.

For the Proprietors
C. P. Ross

6-11-11
AUG 29
1951



Collier's Weekly
CALIFORNIA
LOS ANGELES, CALIF., ENTRY
The Crowell Collier Publishing Co., Springfield, Ohio

BAKERSTFIELD CALIF
NEWSPAPERS
FR CHICAGO ILL
DP

BAKERSFIELD CALIF

1216118690

BAKERSFIELD CALIF

1216121142

LOS ANGELES CALIF

1216123394

AMF CLERK IN CHARGE L A
50 No 2 Light Air Pouches

1216125786

BAKERSFIELD CAL

1411409470

1411410972

CALIF.

1411414197

1411415778

PT OF AGRICULTURE

1216149288

EXTRA ONE DID NOT LIST

B
BAKERSFIELD CALIF

BAKERSFIELD CALIF

D
BAKERSFIELD CALIF

BAKERSFIELD CALIF DIS

C
BAKERSFIELD CALIF

H
CHICAGO DIS

To:

GPO:1956-O-378056

J
K
L
CALIF.