

J-1 VF/XF-NH Nice Perfs - Choice

PSE 1274908 1/14

"NH" SCARCE & UNDERVALUED!

YCR  
C/6-20

NP 550.00



J 6 XF LH GEM

P.F.C. 351456

ZWV

NP 450.00 ~~300.00~~



J 6 (VAR)? BROWN VF/XF 85  
Deep Shade ph vch

P.F.C. 434002

Z

NP 400.00 ~~100.00~~





Scott J1  
USA

1879

1c

Brown

"it is genuine unused, o.g., never hinged."



## The Philatelic Foundation

501 Fifth Avenue • Suite 1901  
New York, NY 10017

EXPERT COMMITTEE

No. 0351456  
3/07/00

We have examined the enclosed item, of which a photograph is attached, and *described by the applicant* as follows:

Country: UNITED STATES OF AMERICA

Cat. No.	Issue	Denom.	Color
J6	1879	1c	brown

Scott's unless otherwise specified.

### AND WE ARE OF THE OPINION THAT:

IT IS A GENUINE SCOTT J6, BROWN SHADE, PREVIOUSLY HINGED. \*\*\*\*\*

\*\*\*\*

\*\*\* PF GRADED VF-XF 85 \*\*\*





J 19 VF/ ~~LH~~ LH  
Choice

P.F.C. 282275

ZW-AX  
12/4-56 NP. 575. ~~125.~~



J 20 VF LH

great Color

PFC 463194  
225.



J 29 SUPERB GRADE 98  
LH (PH) EX LARGE MCNS!  
GEM

P.S.E. 1030142

AX

200<sup>00</sup>

11/03

01030142



1891 1c

Bright claret

Mint OG

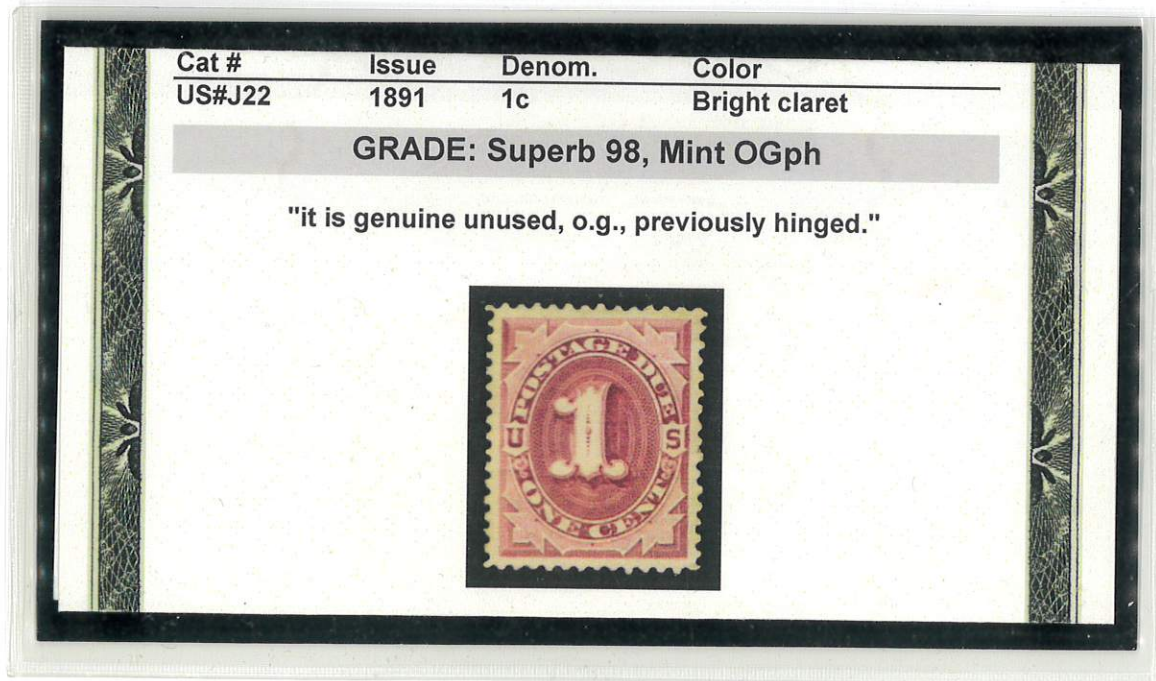
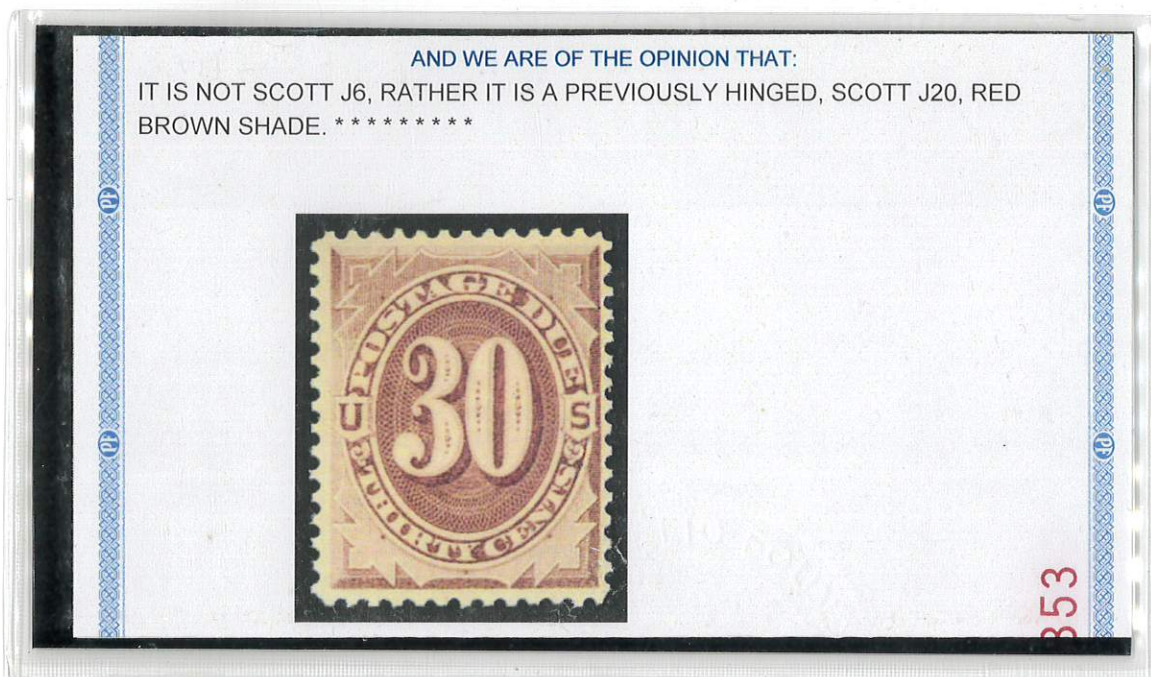
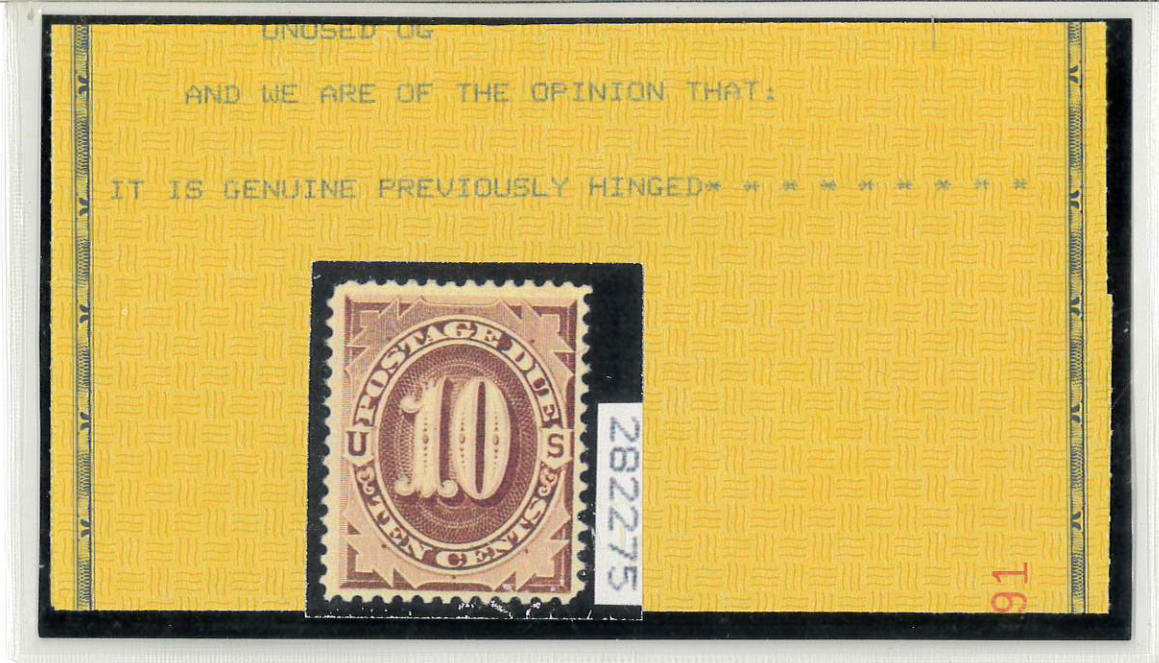
J22/

98/

Ord No: 20001021









J24  
VF/XF NH



552410 6/18

WR  
W/Su

NP 295.4



J 26 XF/SUP XLH (Looks NH)  
A GEM

P.F.C. 342938

ZWRV

NP. 425.-

*Handwritten mark*



J 26 XF LH Beauty

P.F.C. 133221

Y  
9/02

Price 350.-





UNCOILED, US  
AND WE ARE OF THE OPINION THAT:  
IT IS GENUINE, NEVER HINGED. \*\*\*\*\*



552410

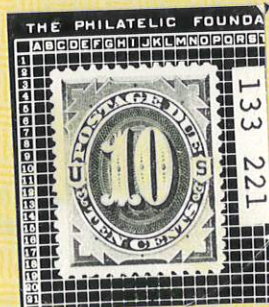
34

AND WE ARE OF THE OPINION THAT:  
IT IS GENUINE, PREVIOUSLY HINGED\* \* \* \* \*



342932

518



For The Expert Committee  
Chairman

Cat No Issue Denom Color



J 28 VFT/XF XLH  
FRESH!

P.F.C. 390585

ZCR

NP. 700.

~~15A~~<sup>00</sup>



J 29 Vermilion  
UNUSED w/o gum  
SOUND + FINE

APS CERT # 93483

A

REFERENCE COPY  
NP 300.



J 33 "LAKE" (VAR) SCARCE XF+ ~~XXA~~

PFC 312986

VF

EAV  
7/3

95/1400  
FMQ 90/825

950<sup>00</sup>





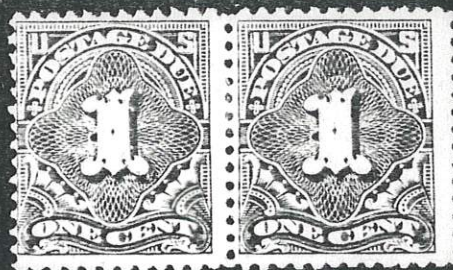
AND WE ARE OF THE OPINION THAT:

IT IS GENUINE, PREVIOUSLY HINGED\* \* \* \* \*



45

AMERICAN  
PHILATELIC SOCIETY 93483



Members of The American Philatelic Expertizing Service have  
examined the item submitted and it is their opinion that it is

United States, Scott No. J29, unused

UNUSED OG

AND WE ARE OF THE OPINION THAT:

IT IS A GENUINE NEVER HINGED SCOTT J33 VARIETY,  
LAKE. \* \* \* \* \*



13



# J33 XF XLH (SCARCE)

P.F.C. 327128

ZCVO  
10/15-54

N.P. 350.

~~350~~<sup>00</sup>



J 35 LH GRADE VF/XF 85 OG Ph.  
NICE FOR THIS!

PFC 470161

YAX

SMG=500

500<sup>00</sup>



J 36b XF XLH LARGE MONS  
SCARCE "PALE ROSE" SHADE

(2) PFC 350410

E-C

NP 550.-

~~UNLIST.~~



350410



UNUSED OG

AND WE ARE OF THE OPINION THAT:

IT IS GENUINE, PREVIOUSLY HINGED\* \* \* \* \*



3

AND WE ARE OF THE OPINION THAT:

IT IS GENUINE, PREVIOUSLY HINGED\*\*\*\*\*

\*\*\* PF GRADED VF-XF 85 \*\*\*



470161

66

UNUSED OG

AND WE ARE OF THE OPINION THAT:

IT IS GENUINE, PREVIOUSLY HINGED\* \* \* \* \*



66



J 38  
 VHF NH  
 70 = 70.  
 80 = 100  
 90 = 90.  
 5

J 55  
 VHF NH  
 VF 195  
 \$150.



J 40 09 NH GRADED 85 (+) PSAG  
 PSAG 3/19 0580899  
 + PFC FOR 5/3  
 550<sup>00</sup>

ZR  
 K





EXPERT COMMITTEE OPINION:

**Grade: 85 og, NH**

Cat#	Issue	Denom.	Shade
J40	1895	3c	Deep Claret

*"It is genuine, unused, og, Never Hinged."*





J 52a VAR. DULL ROSE XF 90 PH. GRADED (VFH)

PSE 518528 12/13

NP 130. =



J 57 VF ~~XF~~ LH  
CAT 600. 225

85-750  
N.P. 675: ~~4000~~



J 63 VF/XF NH  
(w/LH SELVAGE)

50. =

J 63 (ARM) NH  
VF

35.00

J 63 VF NH

35. =





UNUSED, OG,

AND WE ARE OF THE OPINION THAT:

IT IS GENUINE, PREVIOUSLY HINGED\*\*\*\*\*

\*\*\* PF GRADED XF 90 \*\*\*



51



J 64 VF/XF NH - Lg Mgrs

P.S.E. 1034103

85.-



J 66 CARMINE-ROSE XF  
NH

P.F.C. 349269

PA  
10/01

NP 325.

~~1000~~:-



J 66 NH GRADE VF-XF (85)<sup>+</sup>

PSE 1146226

+ PFC '02

ZB

STQ 340

500<sup>00</sup>





Cat #	Issue	Denom.	Color
US#J64	1917	5c	Carmine

"it is genuine unused, o.g., never hinged."



Cat #	Issue	Denom.	Color
US#J66	1917	30c	Carmine rose

GRADE: VF-XF 85, Mint OGnh

"it is genuine unused, o.g., never hinged."





J 66a XF NH  
Deep Claret

G.P.F.C. 392688

VX  
10/2-54

NP 350.-

~~100.-~~



392688

J 75 NH GRADE XF 90<sup>+</sup>

UNDERGRADED

P.S.E. 1146228

E  
7/05 R

~~100~~ PFC (00)

(510 540)

675.  
~~675.~~



~~J 75~~ J 75b VF  
OG PII  
EARTHEN WET PRG.  
SCARLET

30.-

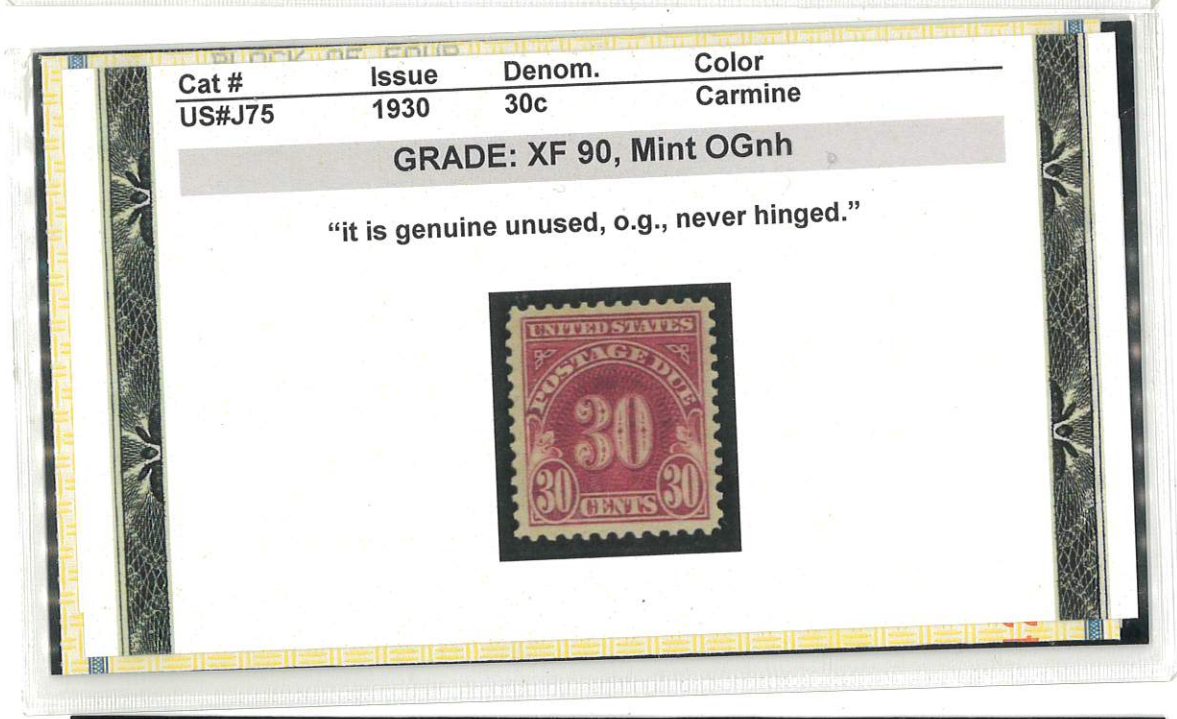
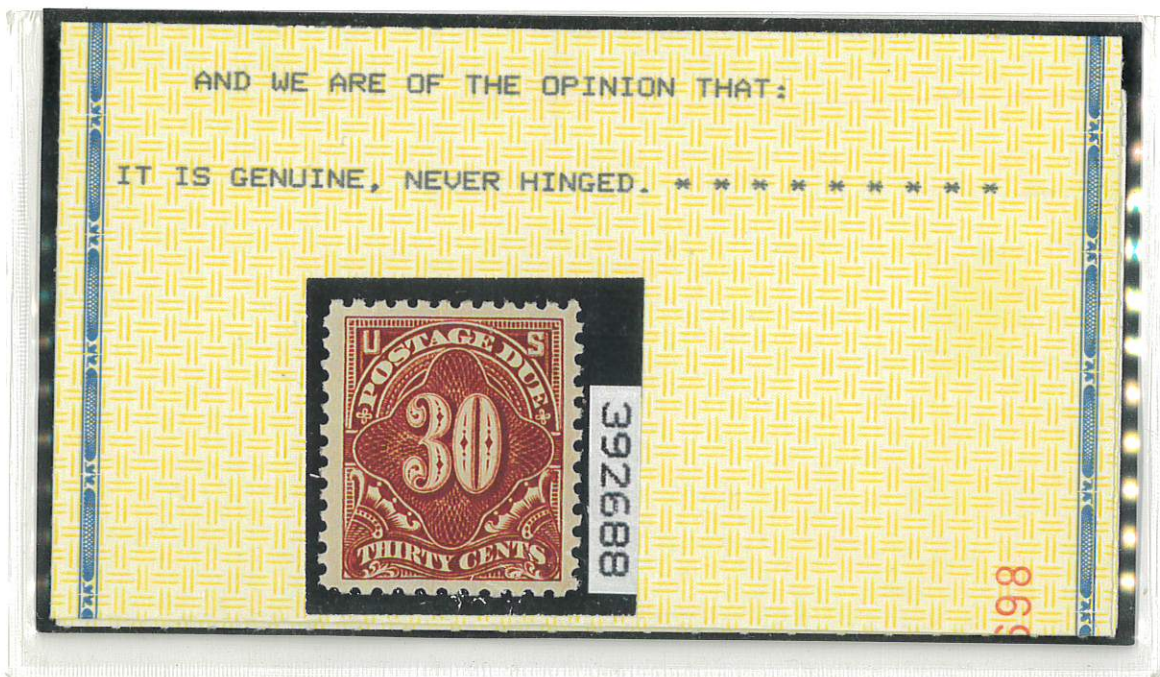
~~J 75~~ J 75a XF+ NH  
SCARLET DRY PRG

J 75a 1

140.-









J87 NH GRADE XF-SUP (95)

GEM

P.S.E 1146229

NP 225<sup>00</sup>





GRADE: XF-Sup 95, Mint OGnh

"it is genuine unused, o.g., never hinged."

