

## SERIES OF 1926-27



*Map of United States*



*Map of United States*



*Map of United States*

By 1925, air-mail, under government sponsorship, became well established, and as an aid to civilian aviation Congress decided to place this service on a contract basis with private flying interests and established a new rate of 10¢ per ounce up to 1,000 miles, 15¢ up to 1,500 miles and 20¢ beyond this mileage. For this service, three stamps in the denominations called for above were issued during 1926-27 with the central design a relief map of the United States

## LINDBERGH

1927



*Spirit of St. Louis*

Issued to commemorate Charles A. Lindbergh's historic non-stop solo flight from New York to Paris in the famous "Spirit of St. Louis" in May of 1927, this stamp was placed on sale June 18, 1927

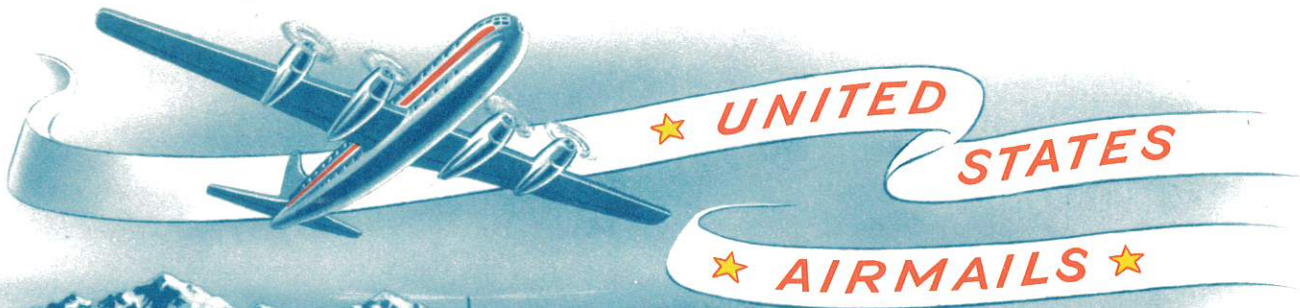
## BEACON

1928



*Airways Beacon*

This stamp, engraved in red and blue, represents the beacon light on Sherman Hill, in the Rocky Mountains, with a mail plane in flight at the left. It was first placed on sale July 25, 1928, the rate becoming effective on August 1st.



## WINGED GLOBE

1930



*Emblem of Air Service*

1931



*Emblem of Air Service*

1932



*Emblem of Air Service*

1934



*Emblem of Air Service*

General acceptance of this faster method of mail service resulted in a heavy demand for air-mail stamps. This caused the discontinuance of the more cumbersome bi-color issue in favor of the speedier one color design. The issues above depict the insignia of an air-mail pilot. The 5¢ violet appeared by flat plate process, perforation 11 Feb. 10, 1930 and by rotary press, perforation 10½ x 11 Aug. 19, 1931. This same design was re-issued in 8¢ olive green color on September 26, 1932 to conform with the new air rate as well as was the 6¢ Orange value of July 1, 1934. Both these values were produced by rotary press, perforation 10½ x 11.

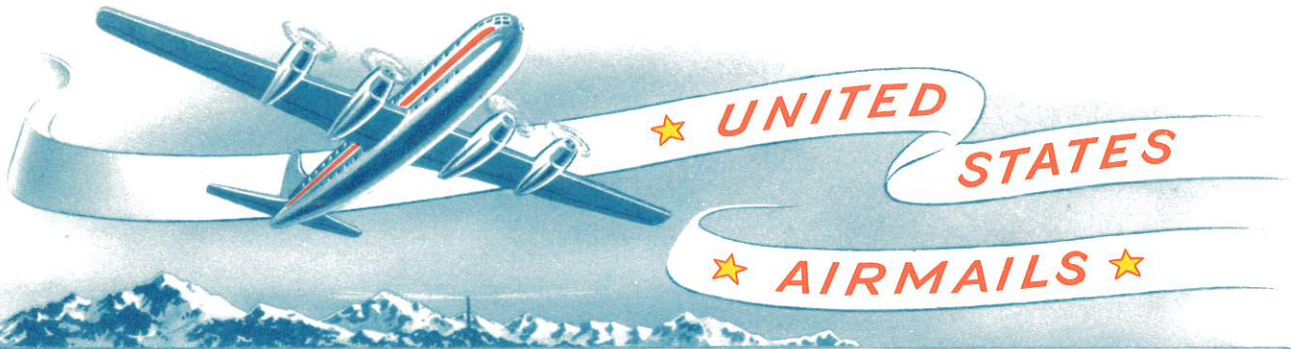
## GRAF ZEPPELIN CENTURY OF PROGRESS FLIGHT



2 stamps

*Zeppelin Between Germany and Chicago*

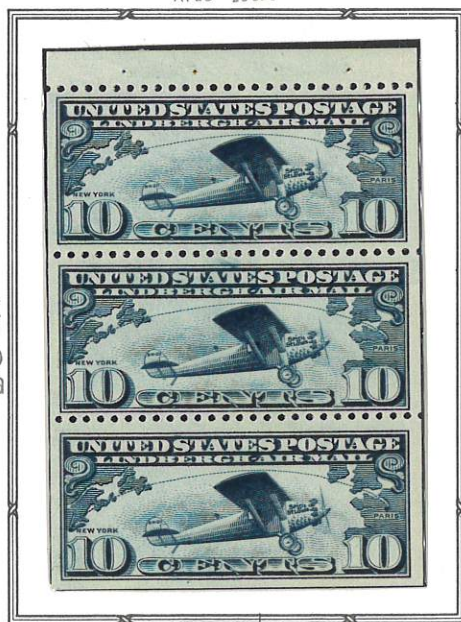
In conjunction with "A Century of Progress" Exposition in Chicago, Germany sent the Airship Graf Zeppelin as a messenger of good will. The ship carried special souvenir letters for which this 50¢ stamp was issued on Oct. 2, 1933.



## BOOKLET PANES

1927

APES 25629



*Spirit of St. Louis*

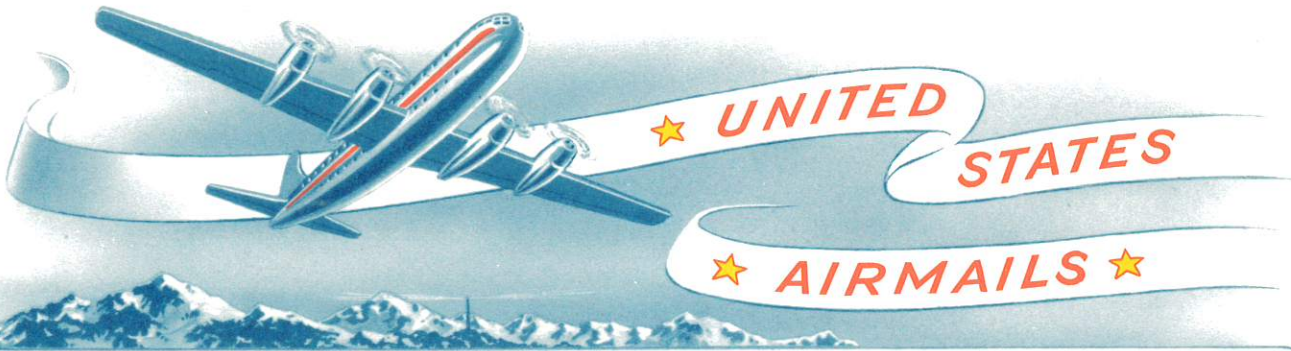
The 10c Lindbergh stamps were issued in booklet form to popularize the air mail service. There were two panes to a booklet which sold for sixty-one cents.

1943



*Twin-Motor Mail Transport*

The 6c air mail stamp of the 1941 series was issued March 18, 1943 in booklet pane form. It was primarily for use by the armed forces. First issued with four panes to the booklet at seventy-three cents, later in two pane booklets at thirty-seven cents.



## 6¢ AIR MAIL COIL 1949



*Four Engine Transport*

Issued in conjunction with new air mail postage rates and replaces the 5c coil air mail stamp of 1948.

## 1949 6¢ AIR MAIL 1949



*Four Engine Transport*

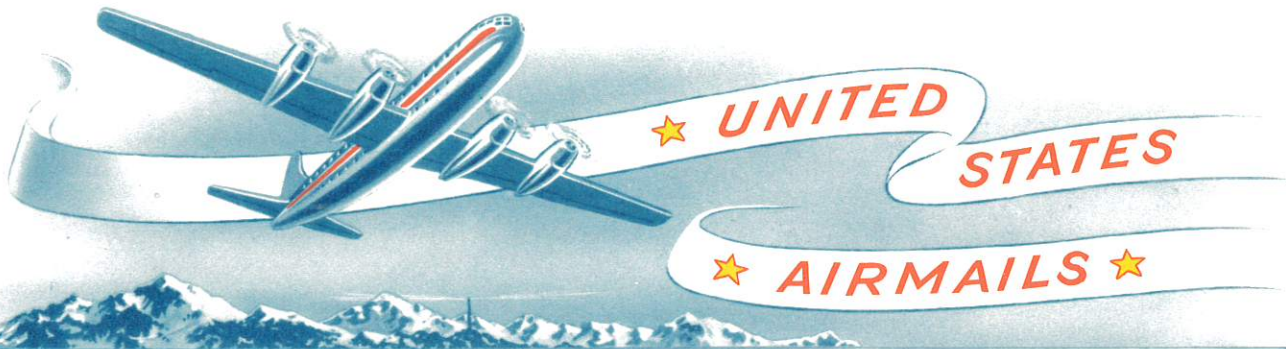
This stamp replaces the 5c air mail issue of 1947 and conforms with the new air mail postage rate of 6c per ounce.

## 6¢ BOOKLET PANE 1949



*Four Engine Transport*

The 6c air mail booklet pane was issued on November 18, 1949 and was placed on first day sale at the ASDA National Postage Stamp Show held at the 71st Regiment Armory in New York City November 18-21, 1949.



## U. S. AIR FORCE

1958



*Eagle*

Placed on sale July 31, 1958, this 5c air mail stamp was issued to cover the new air mail postage rate of 5c per ounce on air mail postcards.

1957



*Air Force Planes*

This stamp, released on August 1, 1957, commemorates the 50th anniversary of the United States Air Force as part of the National Defense System. The design features a B-52 Stratofortress in a banking position with three F-104 Starfighters in the background.

1958



*Plane*

The 7c air mail stamp shown above was issued to cover new air mail postage rates which became effective August 1, 1958. It features a silhouette view of the wing spread and fuselage of a composite jet airliner of the most advanced type.

## COIL

1958

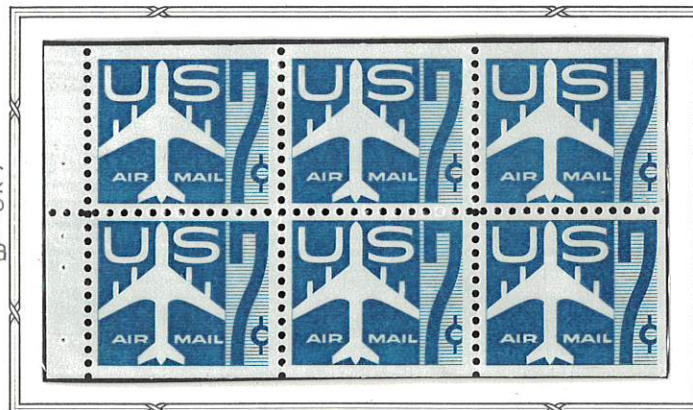


*Plane*

The 7c air mail coil stamp was issued on July 31, 1958 for use in coil vending machines and mechanical office dispensers.

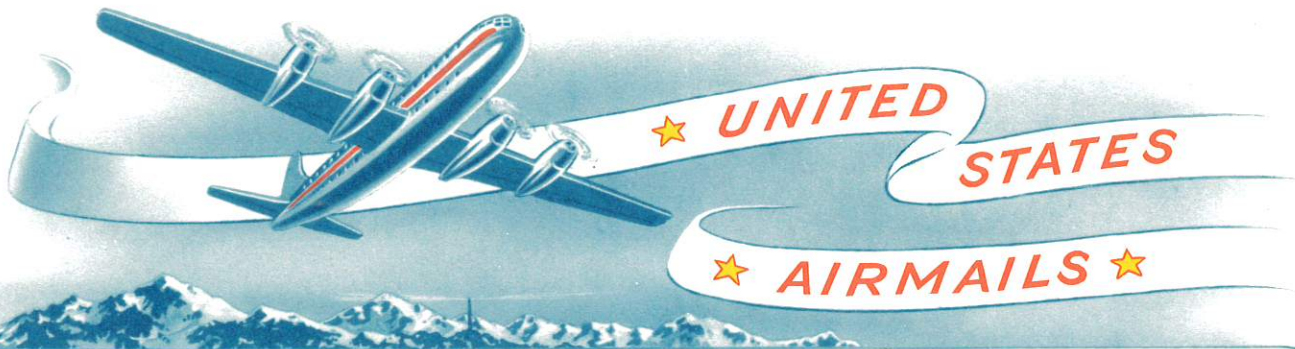
## BOOKLET PANE

1958



*Aircraft*

Issued July 31, 1958 at San Antonio, Texas in booklet form . . . six stamps to a full pane and two panes to a booklet.



# 10¢ LIBERTY AIR MAIL

1960



*Liberty Bell*

The Liberty Bell is the symbol of America to the people to the South in the Latin American countries. For this reason, the Liberty Bell was used in this new 10c air mail design which covers the air postage rate to Central and South America.

# 7¢ FIRE RED COIL

1960



*Jet Airliner*

This new fire red air mail stamp in coil form was released October 22nd at Atlantic City, N. J.

# 25¢ LIBERTY AIR MAIL

1960

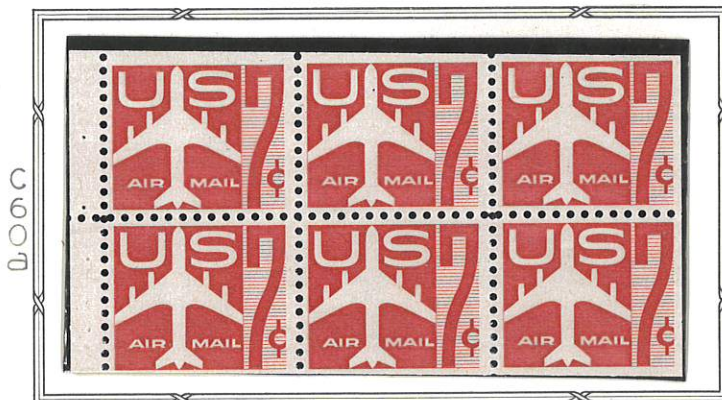


*Abraham Lincoln*

This 25c stamp features a three-quarter portrait of Abraham Lincoln with a quotation from his famous Gettysburg Address: "Of the People, By the People, For the People." The design was chosen by a survey to determine what the majority of people of the World considered as the symbol of America.

# 7¢ FIRE RED BOOKLET PANE

1960



*Jet Airliner*

The seven cent fire red air mail stamp in booklet pane form was released in St. Louis Mo., August 19th, in conjunction with the 66th annual convention and exhibition of the Society of Philatelic Americans.

# 7¢ FIRE RED AIR MAIL

1960



*Jet Airliner*

This seven cent airmail stamp in sheet form was placed on sale at Arlington, Va. on August 12, 1960, in conjunction with the annual convention of the American Air Mail Society. It was printed in a distinct shade of red as a means of facilitating the handling of air mail letters.

No. 65 713

January 23, 1978

THE PHILATELIC FOUNDATION

99 PARK AVENUE  
NEW YORK, N.Y. 10016

EXPERT COMMITTEE

We have examined the enclosed item submitted by the applicant described as follows:

Country USA Issue 1928 Denomination 5¢

Color carmine & blue Cat. No. C11

Brief description or additional information

All Catalogue numbers are Scott's unless otherwise specified.

Unused, o.g.  
of which a photograph is attached and are of the opinion  
that it is genuine.-----  
-----  
-----



*Markus Runk*  
For The Expert Committee  
Chairman

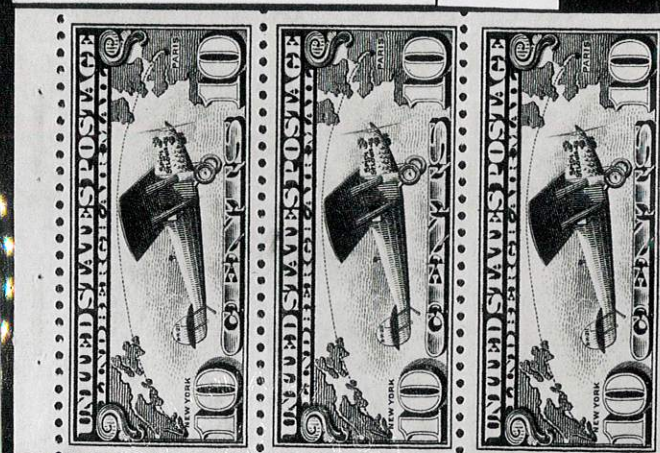
submitted by Dr. Ronald J. Alvarez

Use the No. assigned here→  
when referring to the opinion  
rendered by the Committee.

25629

MOUNT ONLY ONE STAMP, PAIR, BLOCK OR COVER IN THIS SPACE. MOUNT THEM SO IT CAN BE EASILY REMOVED FOR EXAMINATION BUT BE SURE THE MOUNT IS CLOSED OR FOLDED SO THE ITEM WILL NOT ACCIDENTALLY SLIDE OUT. A SMALL ACETATE OR GLASSINE ENVELOPE IS RECOMMENDED.

AMERICAN PHILATELIC SOCIETY 25629



Members of The American Philatelic Expertizing Service have examined the item submitted and it is their opinion that it is

Scott No. C10a, mint, genuine in all respects.

Date MAY 17 1976

*James T. DeVos*  
(APS Authorized Signature)  
*Philip St. Kolbe*  
(ASDA Authorized Signature)

Use the No. assigned here→  
when referring to the opinion  
rendered by the Committee.

28805

MOUNT ONLY ONE STAMP, PAIR, BLOCK OR COVER IN THIS SPACE. MOUNT ITEM SO IT CAN BE EASILY REMOVED FOR EXAMINATION BUT BE SURE THE MOUNT IS CLOSED OR FOLDED SO THE ITEM WILL NOT ACCIDENTALLY SLIDE OUT. A SMALL ACETATE OR GLASSINE ENVELOPE IS RECOMMENDED.

Do NOT use SCOTCH TAPE OR STAPLES.

CERTIFICATE INVALID IF LEFT-HAND PANEL SEPARATED FROM THIS PANEL.

AMERICAN PHILATELIC SOCIETY 28805



Members of The American Philatelic Expertizing Service have examined the item submitted and it is their opinion that it is

Scott No. C18, mint, genuine in all respects.

Date APR 25 1977

*James T. DeVos*  
(APS Authorized Signature)  
*Philip St. Kolbe*  
(ASDA Authorized Signature)

Use the No. assigned here→  
when referring to the opinion  
rendered by the Committee.

24717

MOUNT ONLY ONE STAMP, PAIR, BLOCK OR COVER IN THIS SPACE. MOUNT THEM SO IT CAN BE EASILY REMOVED FOR EXAMINATION BUT BE SURE THE MOUNT IS CLOSED OR FOLDED SO THE ITEM WILL NOT ACCIDENTALLY SLIDE OUT. A SMALL ACETATE OR GLASSINE ENVELOPE IS RECOMMENDED.

AMERICAN PHILATELIC SOCIETY 24717



Members of The American Philatelic Expertizing Service have examined the item submitted and it is their opinion that it is

Scott No. C18, mint, genuine, tiny  
scrape on face.

Date MAR 15 1976

*James T. DeVos*  
(APS Authorized Signature)  
*Wallace E. Hopper*  
(ASDA Authorized Signature)

Use the No. assigned here→  
when referring to the opinion  
rendered by the Committee.

27049

MOUNT ONLY ONE STAMP, PAIR, BLOCK OR COVER IN THIS SPACE. MOUNT ITEM SO IT CAN BE EASILY REMOVED FOR EXAMINATION BUT BE SURE THE MOUNT IS CLOSED OR FOLDED SO THE ITEM WILL NOT ACCIDENTALLY SLIDE OUT. A SMALL ACETATE OR GLASSINE ENVELOPE IS RECOMMENDED.

DO NOT USE SCOTCH TAPE OR STAPLES.

CERTIFICATE INVALID IF LEFT-HAND PANEL SEPARATED FROM THIS PANEL.

AMERICAN  
PHILATELIC SOCIETY 27049



Members of The American Philatelic Expertizing Service have examined the item submitted and it is their opinion that it is  
Scott No. C37, mint, genuine in all respects. Joint line pair.

*James N. DeVos*  
(APS Authorized Signature)  
*Phyllis K. Robbins*  
(ASDA Authorized Signature)

Date JUN 18 1976

Use the No. assigned here→  
when referring to the opinion  
rendered by the Committee.

27050

MOUNT ONLY ONE STAMP, PAIR, BLOCK OR COVER IN THIS SPACE. MOUNT ITEM SO IT CAN BE EASILY REMOVED FOR EXAMINATION BUT BE SURE THE MOUNT IS CLOSED OR FOLDED SO THE ITEM WILL NOT ACCIDENTALLY SLIDE OUT. A SMALL ACETATE OR GLASSINE ENVELOPE IS RECOMMENDED.

DO NOT USE SCOTCH TAPE OR STAPLES.

CERTIFICATE INVALID IF LEFT-HAND PANEL SEPARATED FROM THIS PANEL.

AMERICAN  
PHILATELIC SOCIETY 27050



Members of The American Philatelic Expertizing Service have examined the item submitted and it is their opinion that it is  
Scott No. C41, mint, genuine in all respects. Joint line pair.

*James N. DeVos*  
(APS Authorized Signature)  
*Phyllis K. Robbins*  
(ASDA Authorized Signature)

Date JUN 18 1976

Use the No. assigned here→  
when referring to the opinion  
rendered by the Committee.

27051

MOUNT ONLY ONE STAMP, PAIR, BLOCK OR COVER IN THIS SPACE. MOUNT ITEM SO IT CAN BE EASILY REMOVED FOR EXAMINATION BUT BE SURE THE MOUNT IS CLOSED OR FOLDED SO THE ITEM WILL NOT ACCIDENTALLY SLIDE OUT. A SMALL ACETATE OR GLASSINE ENVELOPE IS RECOMMENDED.

DO NOT USE SCOTCH TAPE OR STAPLES.

CERTIFICATE INVALID IF LEFT-HAND PANEL SEPARATED FROM THIS PANEL.

AMERICAN  
PHILATELIC SOCIETY 27051



Members of The American Philatelic Expertizing Service have examined the item submitted and it is their opinion that it is  
Scott No. C52, mint, genuine in all respects. Joint line pair.

*James N. DeVos*  
(APS Authorized Signature)  
*Phyllis K. Robbins*  
(ASDA Authorized Signature)

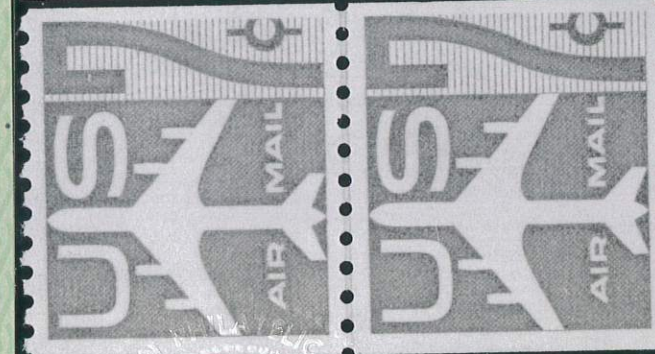
Date JUN 18 1976

Use the No. assigned here→  
when referring to the opinion  
rendered by the Committee.

24749

MOUNT ONLY ONE STAMP, PAIR, BLOCK OR COVER IN THIS SPACE. MOUNT THEM SO IT CAN BE EASILY REMOVED FOR EXAMINATION BUT BE SURE THE MOUNT IS CLOSED OR FOLDED SO THE ITEM WILL NOT ACCIDENTALLY SLIDE OUT. A SMALL ACETATE OR GLASSINE ENVELOPE IS RECOMMENDED.

AMERICAN  
PHILATELIC SOCIETY 24749



Members of The American Philatelic Expertizing Service have examined the item submitted and it is their opinion that it is  
Scott No. C61, mint, genuine in all respects. Joint line pair.

*James N. DeVos*  
(APS Authorized Signature)  
*Wallace R. Shipple*  
(ASDA Authorized Signature)

Date MAR 15 1976