

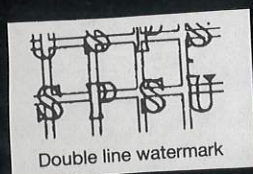


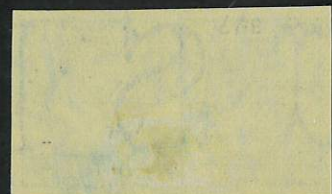




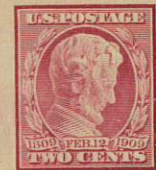
1907 JAMESTOWN EXPOSITION





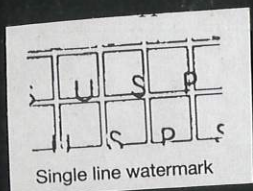


W
x
22
23



BLUISH PAPER









The Philatelic Foundation

501 Fifth Avenue • Suite 1901
New York, NY 10017

EXPERT COMMITTEE

No. 0331272
11/17/98

We have examined the enclosed item, of which a photograph is attached, and *described by the applicant* as follows:

Country: UNITED STATES OF AMERICA

Cat. No.	Issue	Denom.	Color
391	1910	2¢	carmine

Scott's unless otherwise specified.

UNUSED OG
GUIDE LINE PAIR.

AND WE ARE OF THE OPINION THAT:

IT IS GENUINE, THE BOTTOM STAMP NEVER HINGED AND
THE TOP STAMP PREVIOUSLY HINGED.



AR Green
For The Expert Committee
Chairman

D019648

Photocopies of this Certificate are not valid.

Submitted by

VALLEY STAMP CO.





The Philatelic Foundation

501 Fifth Avenue • Suite 1901
New York, NY 10017

EXPERT COMMITTEE

No. 0342363
7/22/99

We have examined the enclosed item, of which a photograph is attached, and *described by the applicant* as follows:

Country: UNITED STATES OF AMERICA

Cat. No.	Issue	Denom.	Color
407	1914	7¢	black

Scott's unless otherwise specified.

UNUSED OG

AND WE ARE OF THE OPINION THAT:

IT IS GENUINE, NEVER HINGED. * * * * *



Al Romm

For The Expert Committee
Chairman

Photocopies of this Certificate are not valid.

Submitted by

VALLEY STAMP CO.

030284

















The Switch to Offset Printing

Effective November 2, 1917, the first-class letter rate rose to 3¢, which greatly increased the demand for 3¢ stamps — and also for 1¢ stamps, to go with 2¢ stamps and stamped envelopes already purchased.

Operating at full capacity, the Bureau of Engraving and Printing found its ink to be of poor quality — probably due to difficult conditions during World War I. The ink contained so much grit that printing plates wore out in about 10 days, faster than it took to make them. So the Bureau switched temporarily to offset printing, for which plates could be produced much more rapidly. Later a more satisfactory ink was found, and the higher-quality engraving process used previously was re-established.





TYPE IV

TYPE V



TYPE Va



TYPE VI



TYPE VII



Perf. 12½











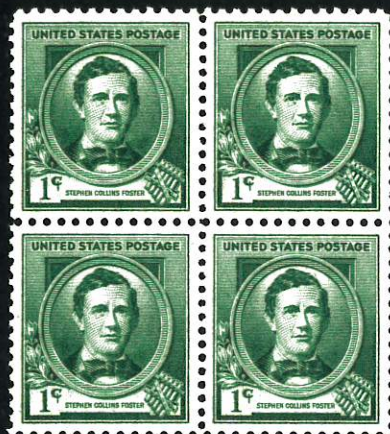




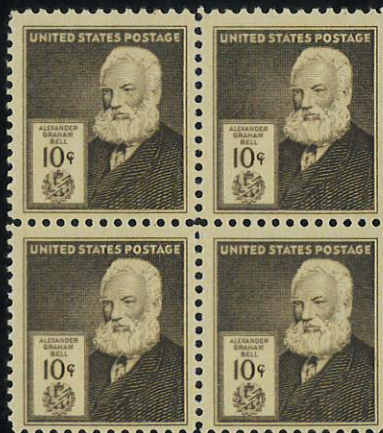




















22664



22668



22670







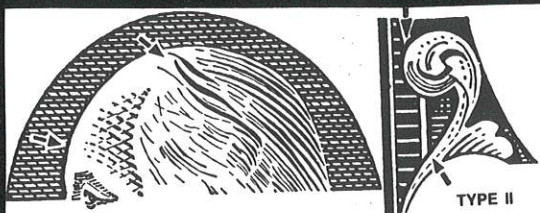












Three heavy hair lines at top center of head; two being outstanding in the white area. Outline of left acanthus scroll very strong and clearly defined at top (under left edge of lettered panel) and at lower curve (above and to left of numeral oval).



TYPE II

TYPE I













C. V. De E

A.B.



send by

RICHARD PITROT
441 EAST 87th Street
NEW YORK City

HERRN HANS HUBNER

für Herrn Josef Hübner Carusell Fabric

Lindenplatz Nr 2.

DEUTSCHLAND



NEUSTADT. Orla
Germany



