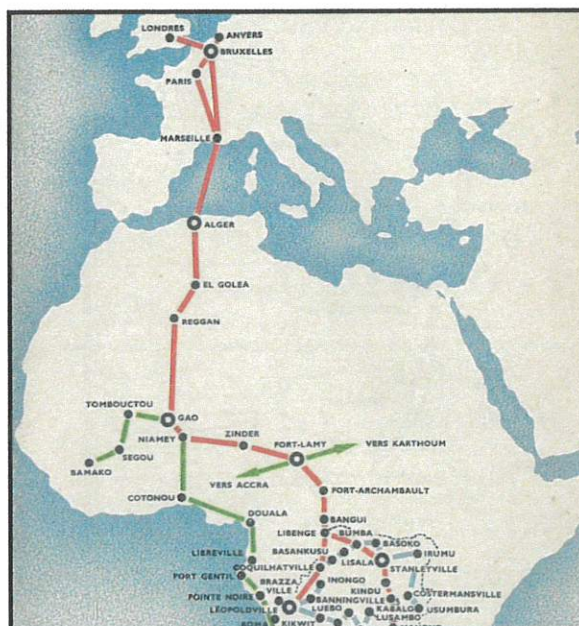


Trans-Atlantic Air mail

Belgian Congo to United States air/surface route 1937.



- Route:** Port Franco 25 November 1937 then SABENA air via Leopoldville-Coquilhatville-Fort Lamy-Algiers-Marseille-Paris (or Brussels-Paris). Surface then to New York.
- Rate:** Surface 2.50 Fr., air fee 3 Fr. Congo to Belgium. Total paid 5.50 Fr. The Taxe surcharge may be the charge from Brussels to Paris if that route was used.
- Features:** Endorsement "jusque Paris". No indication of surface route from Paris.

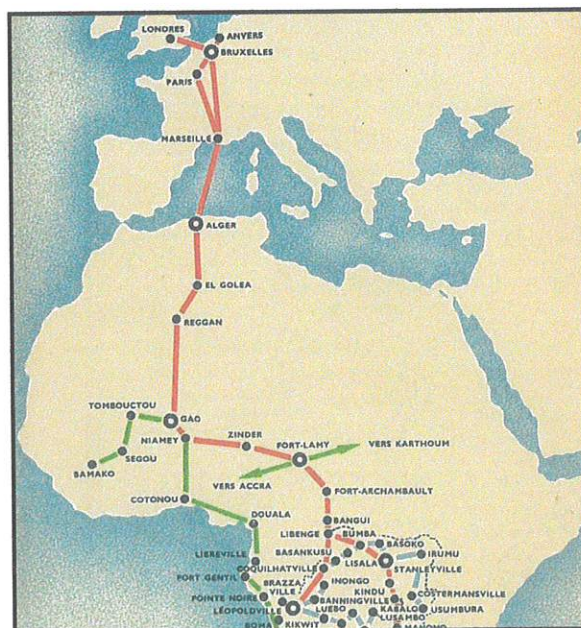


Trans-Atlantic Air mail

Belgian Congo to United States air/surface route 1939.



- Route: SABENA air via Leopoldville-Coquilhatville-Fort Lamy-Algiers-Marseille-Paris (or Brussels-Paris). Surface then to New York.
- Rate: "Compagnie Maritime Belge" cover apparently sent as "Papiers d'Affaires. Surface (minimum) 2.50 Fr., air fee 60c. Congo to Belgium. Total paid 3.10 Fr.
- Features: Endorsement "Transport Par Avion Effectué". No indication of surface route from Paris.

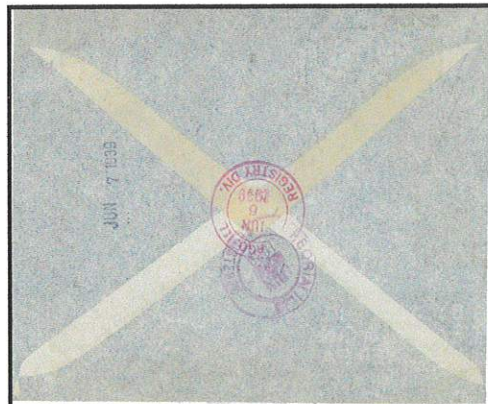


Trans-Atlantic Air mail

Belgian Congo to United States all-air in error 1939.



- Route: Elisabethville 22 May 1939, by SABENA to Europe (probably Marseilles) then in error by air to New York. Peoria, Illinois arrival 6 June 1939.
- Rate: Rate paid 8.50 Fr. Surface fee 2.50 Fr., Registration 2.50 Fr., leaving 3.50 Fr. for the air fee. A note (No.5) in the Ordonnance of 28 July 1938 states that air correspondence for New York would be carried by air to Europe at the (non-Belgian) air rate of 3.50 Fr. then by surface to America.
- Features: Original route should have been by surface from Europe to America but the Peoria arrival 6 June 1939 gives a transit time of only 15 days. This must mean that the cover travelled trans-Atlantic by air, probably on "Atlantic Clipper" which left Marseilles on 1 June 1939, arriving in New York on 3 July.

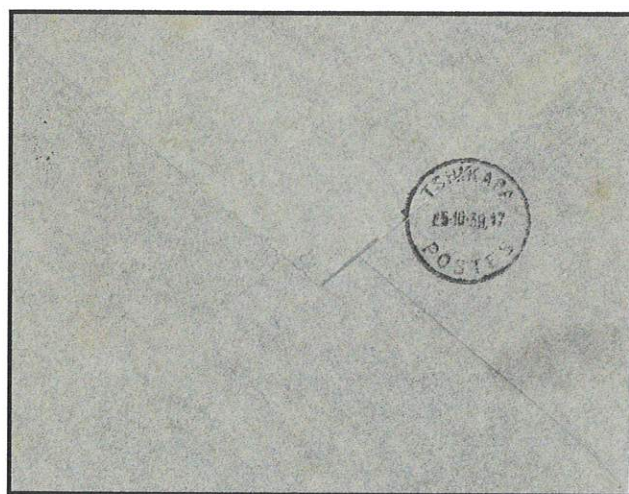


Internal Air Mail

First flight Leopoldville to Lusambo 10 October 1939.



- Route: As shown on cover. Depart and arrival 25 October 1939.
- Rate: Rate paid 60c. Internal air fee for AO (Autres Objets) was 50 centimes but presumably the two 5c stamps were added for artistic effect?
- Features: Continuing pre-war development of SABENA services within the Belgian Congo, despite the situation in Europe.



Trans-Atlantic Air mail

Belgian Congo to United States surface/air route 1940.



- Route:** Coquilhatville 27 October 1940, Leopoldville 28 October, by surface to Lisbon 21 November, Indianapolis 28 November 1940. Flight 237 "Dixie Clipper" left Lisbon 22 November, arriving New York 23 November. (But see censor below).
- Rate:** Rate paid 9.25 Fr. No published Belgian Congo rate tables show any route using surface to Lisbon and air from Lisbon to America. Surface fee in September 1940 was 2.75 Fr., but this leaves only 6.50 Fr. for the trans-Atlantic air fee. The all-air fee from September 1940 was 9.75 Fr. to which 2.75 Fr. surface fee would be added. However, someone calculated the 9.25 Fr.?
- Censor:** Congo Leopoldville, Bermuda 6085. Mail possibly delayed by censorship in Bermuda, resulting in late arrival in New York, carried by Bermuda-New York service FAM-17.
- Features:** Endorsement "Par Avion Trans-Atlantique" and "Par Avion a Partir de Lisbonne", indicating surface to Lisbon then Pan American Clipper from Lisbon to New York.



Trans-Atlantic Air mail

Belgian Congo to United States air/surface 1940.

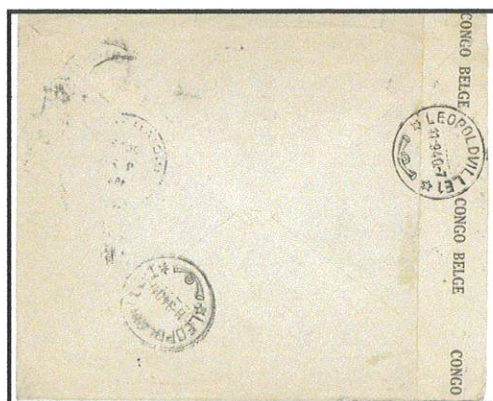


Route: Coquilhatville 10 September 1940, by air to Leopoldville 11 ^{September} November, then by surface to America, arriving Indianapolis 21 October 1940.

Rate: Rate paid 4.50 Fr. The rate table for 1st September 1940 increased the surface rate from 2.50 Fr. to 2.75 Fr. This cover appears to have been charged at the earlier rate of 2.50 Fr. plus 2 x 1 Fr. internal air fee for a letter between 5 and 10g.

Censor: Congo Leopoldville. No other transit censorship.

Features: Endorsement "Jusqu'à Leopoldville".



Trans-Atlantic Air mail
Congo-United States via Lisbon March 1940



- Route: Elisabethville-Leopoldville by Sabena. Leopoldville-Lisbon via Seville by Sabena-Air Afrique. Lisbon-Horta-Bermuda-Baltimore by Pan American. Depart 23 February 1940. Arrive Baltimore 8 March 1940.
- Rate: Surface 2.50Fr. Registration 2.50Fr. Air fee 6.75Fr. Total 11.75Fr.
- Features: No censorship at Bermuda at this time. FAM-18 flight 100 not proceeding to Marseille after outbreak of war in Europe. Low cost all-air carriage and relatively swift journey.



Trans-Atlantic Air mail

Genuine mail first flight Congo-United States December 1941



- Route:** Leopoldville- Trinidad by first flight "Capetown Clipper". Trinidad-Miami by FAM-6. Depart 11 December 1941, Trinidad 17 December, arrive New York 22 December.
- Rate:** Surface 2.75Fr. Air fee 3 x 15Fr. Total 47.75Fr.
- Censor:** Congo censor. Trinidad Examiner 8085.
- Features:** Air fee 15Fr. existed for first flight and was raised to 15.50Fr on 1 January at the same time as surface rate raised from 2.75Fr. to 3.50Fr. Rate existed for less than 1 month. Commercial mail (as distinct from the barrage of philatelic mail) is uncommon and identifiable by transit dates and arrival date in Miami.



6001/2

Trans-Atlantic Air mail

Genuine mail first flight Congo-United States December 1941



Route: Leopoldville- Trinidad by first flight "Capetown Clipper". Trinidad-Miami after censorship by FAM-6. Depart 11 December 1941, Trinidad 17 December, arrive Miami 20 December.

Rate: Surface 2.75Fr. Air fee 15Fr. Total 17.75Fr.

Censor: Congo censor. Trinidad Examiner 8065.

Features: Air fee 15Fr. existed for first flight and was raised to 15.50Fr on 1 January at the same time as surface rate raised from 2.75Fr. to 3.50Fr. Rate existed for less than 1 month. Commercial mail (as distinct from the barrage of philatelic mail) is uncommon and identifiable by transit dates and arrival date in Miami.



6001/2

Trans-Atlantic Air mail

Genuine mail first flight Congo-United States December 1941



- Route: Leopoldville- Trinidad by first flight "Capetown Clipper". Trinidad-Miami after censorship by FAM-6. Depart 11 December 1941, Trinidad 17 December, arrive Miami 20 December.
- Rate: Surface 2.75Fr. Air fee 15Fr. Total 17.75Fr.
- Censor: Congo Elizabethville censor. No transit examination.
- Features: Air fee 15Fr. existed for first flight and was raised to 15.50Fr on 1 January at the same time as surface rate raised from 2.75Fr. to 3.50Fr. Rate existed for less than 1 month. Commercial mail (as distinct from the barrage of philatelic mail) is uncommon and identifiable by transit dates and arrival date in Miami.

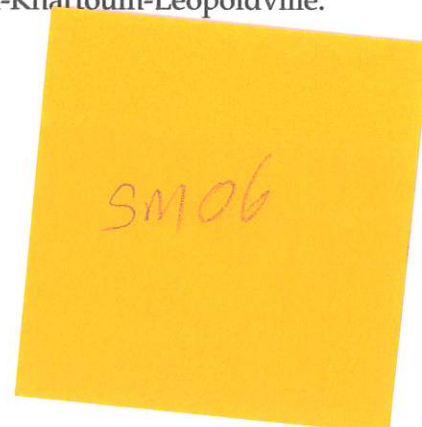


World War 2 Air Mail

Belgian Congo to United States by Special Mission 1941/2.



- Route: Despatched Leopoldville 27 December 1941. Luputa. Leopoldville transit 30 December then by return flight of Pan American Special Mission 6 leaving Leopoldville at 04:37 Hrs. 7 January 1942. Mail from Congo off loaded at Trinidad for censor examination then apparently carried direct to New York, arriving 13 January 1942.
- Rate: Fr. 20.25 made up from Fr. 2.75 surface fee (until 1 January 1942) + Fr. 2 registration (until 1 January 1942) + Fr. 15.50 air fee (from 1 January 1942)
- Censor: Censored at Leopoldville 30 December. Trinidad censor 8093 dated 9 January 1942 which confirms absolutely the flight as SM6.
- Features: Rare example of mail carried on the Pan American Miami-Leopoldville service. All flight details and mail carried confirmed by mission report held in Pan American Archive. This flight started out as Special Mission 06 from New York to Calcutta but authorised to carry civil mail from Leopoldville on return from Calcutta-Karachi-Khartoum-Leopoldville.



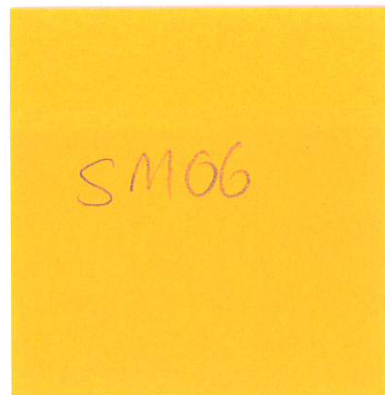
World War 2 Air Mail

Belgian Congo to United States 1941/2. Special Mission 6.

First airmail from Gold Coast on this flight



- Route:** Despatched Luputa 18 December 1941. Additional stamps 19 December at Luputa. Leopoldville transit 23 December then by return flight of Pan American Special Mission 6 leaving Leopoldville at 04:37 Hrs. 7 January 1942. Mail from Congo off loaded at Trinidad 9 January for censor examination then by Pan American local service to Miami. Transit Miami 12 January 1942, arriving Baltimore 13 January 1942.
- Rate:** Should be 3.50Fr. surface, 3.50 Fr. registration, 15.50 Fr. air fee = 22.50. Initially franked 20.25 Fr. then further 8 Fr. added one day later (at Post Office?) Incomprehensible.
- Censor:** Leopoldville 23 December 1941. No other censorship en route.
- Features:** Rare example of mail carried on the Pan American Leopoldville-Miami service. Cover transferred at Trinidad in order to comply with CAB conditions that service was between terminal points Leopoldville and Miami. This flight started out as Special Mission 06 from New York to Calcutta and picked up mail from Leopoldville and Lagos on return from Calcutta-Karachi-Khartoum-Leopoldville. Mail from Lagos included the first service mail from Accra that had been carried to Lagos on 2 January by Pan American Airways (Africa) DC-3 service.

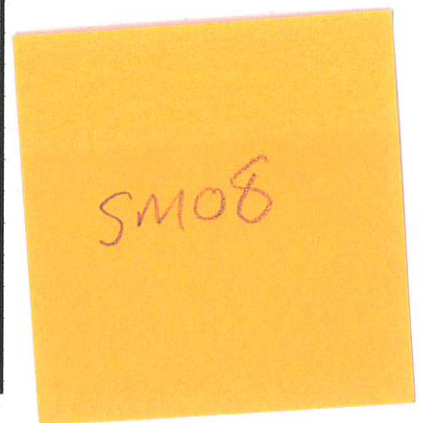


World War 2 Air Mail

Belgian Congo to United States Special Mission 8, 1942.



- Route:** Despatched Leopoldville 12 January 1942. Can only have been carried on Special Mission No.8 in transit from Calcutta-Karachi-Khartoum which left Leopoldville on 15 January 1942. Flown via Fisherman's Lake and Natal-Belem to Trinidad where it was censored, then on to New York arriving 18 January 1942. Receiving office arrival mark of 22 January 1942.
- Rate:** Correct rate should be Fr. 3.50 surface and Fr. 15.50 air fee. Underpaid by 50c.
- Censor:** Leopoldville 12 January 1942. Trinidad Censor 8018.
- Features:** Rare example of mail carried on a Pan American Special Mission flight (Anzac Clipper) not authorised to carry certificated (C&N) mail from Leopoldville, but which in fact carried 4.7kg of mail from Leopoldville to Trinidad.



Trans-Atlantic Air mail

Pan American Route 6 flight from Belgian Congo to United States 1942.

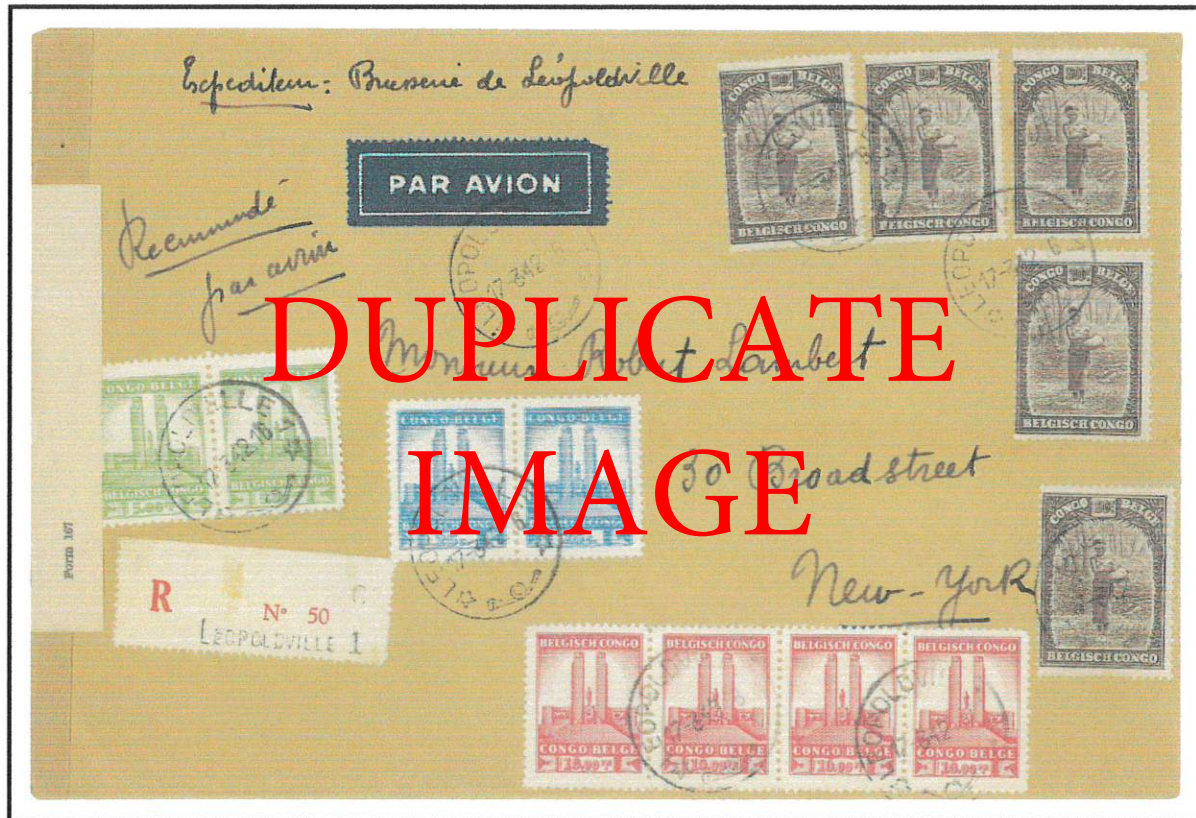


- Route: Elizabethville to Chicago via Leopoldville, Lagos and Fisherman's Lake. Despatch Elizabethville 9 February 1942, transit Leopoldville 13 February, Trinidad 26 March 1942.
- Rate: Fr.3.50 surface; 2 x Fr. 15.50 air fee. Total 34.50.
- Censor: Elisabethville censor strike. Resealing label Leopoldville. Trinidad examiner 8013 (IE).
- Features: Cover carried on the return flight of Special Mission 16 from surveying the Indian Ocean. Flight re-designated as mail carrying at Leopoldville to America. Cover lay in Leopoldville from 13 February, until 6006 departed on 22 March. Mail off-loaded for censorship at Trinidad before forwarding to Miami by Pan American FAM-6 South American services.

SM 16
6005/6

Trans-Atlantic Air mail

Pan American flight 6006 from Belgian Congo to United States 1942.



- Route: Leopoldville to New York via Lagos-Fisherman's Lake-Natal by Route 6 Special Mission. Natal-Trinidad-New York by Pan American South American local service carrying mail under contract FAM-6. Despatch Leopoldville 17 March. New York 12 April 1942.
- Rate: 1st 20g surface 3.50 Fr; 4 x next 20g surface of 2 Fr. = 8 Fr; Registration 3.50 Fr; 9 x 15.50 Fr. air fee = 139.50 Fr. Total 150.50 Fr.
- Censor: Trinidad 8033 (IE).
- Features: Cover carried on the return flight of Special Mission 16 from surveying the Indian Ocean. Flight re-designated as mail carrying at Leopoldville to America. Cover lay in Leopoldville from 17 March, until 6006 departed on 22 March. Mail off-loaded for censorship at Trinidad before forwarding to Miami by Pan American FAM-6 South American services.

SM 16
6005/6

Trans-Atlantic Air mail

Pan American "Special Mission" flight from Belgian Congo to United States 1942.

Leopoldville to New York 17 March 1942

Expéditeur: Brousse de Leopoldville

*Recommandé
par avion*

PAR AVION

Monsieur Robert Lambert

30 Broadstreet

New-York

Form 167

R

N° 50

LEOPOLDVILLE 1

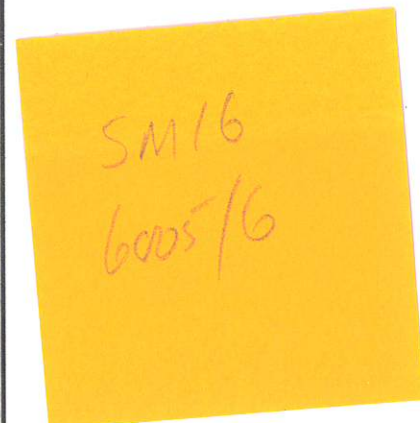


Trans-Atlantic Air mail

Special Mission/Route 6 FAM-22 flight Congo-United States March 1942

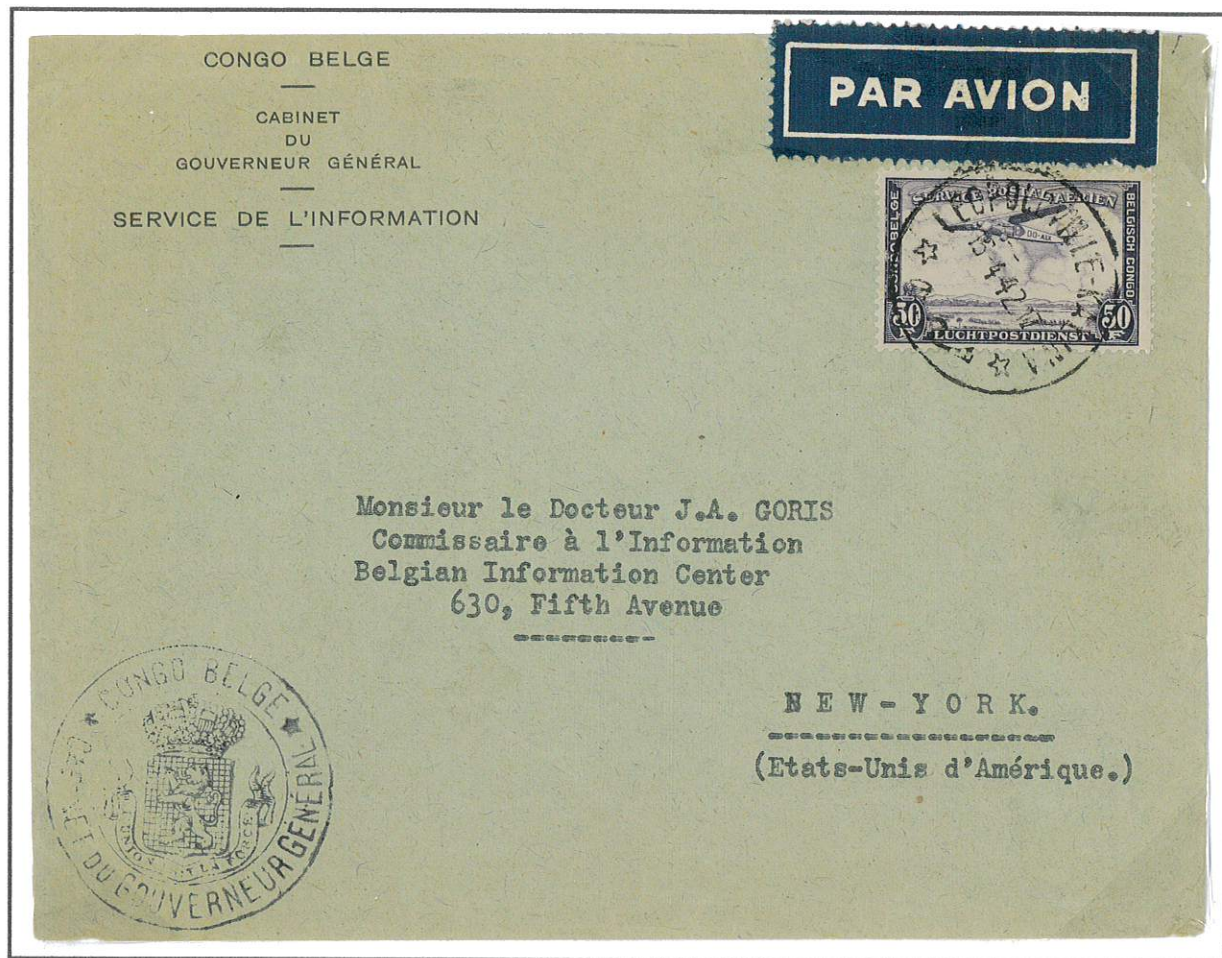


- Route: Leopoldville-Trinidad by Special Mission 16/6006. Trinidad-New York by Pan American regular flights. Posted Leopoldville 11 March 1942.
- Rate: Missing stamp lower right. 3.50 surface, 15.50 air fee. Missing 2.75Fr. (Sc. 181)
- Censor: Congo censor. Trinidad Examiner 8090.
- Features: Only possible flight from Leopoldville was Special Mission 16 returning from Diego Garcia survey via Khartoum. Departed Leopoldville 22 March as flight 6006, arriving Trinidad 25 March. Damaged cover but scarce item.



Trans-Atlantic Air mail

Route 6 flight 6008 Congo-United States April 1942



- Route: Leopoldville-Lagos by Sabena. Lagos-Natal by PanAm 6008 shuttle. Natal-Miami-New York FAM-6 and internal service. Posted 15 April 1943.
- Rate: 3.50Fr. surface. 3 x 15.50Fr. air fee. Total 50Fr.
- Censor: Treated as diplomatic mail. No censorship.
- Features: Diplomatic mail passed without examination. Unusual.

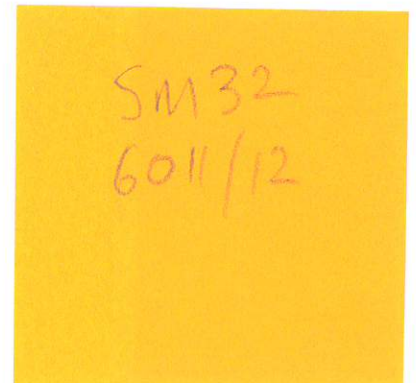
6008

Trans-Atlantic Air mail

Pan American flight 6012 from Belgian Congo to United States 1942.



- Route:** Leopoldville to New York via Route 6 flight. Posted Elisabethville 29 May 1942. Despatch Leopoldville 4 June 1942, transit Miami 27 June, arrive New York 28 June.
- Rate:** Fr.3.50 surface; Fr. 3.50 registration; Fr. 15.50 air fee. Total 22.50. (5 x 4.50 Fr). Internal air fee 1Fr. not paid.
- Censor:** Resealing label Leopoldville 33. Trinidad examiner IE 8032.
- Features:** Rare example of mail carried on the Pan American Miami-Leopoldville service. Return flight (No. 6012) from Leopoldville. Cover transferred at Trinidad in order to comply with CAB conditions that service was between terminal points Leopoldville and Miami. Mail carried was forwarded to Miami using Pan American local services. This flight started out as Special Mission 32 from New York but became flight 6012 from Leopoldville on return.



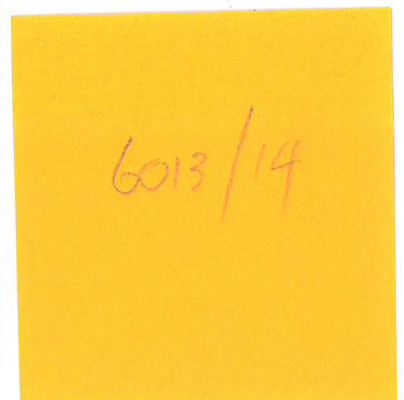
Trans-Atlantic Air mail

Flight 6013/14 Congo-United States June 1942



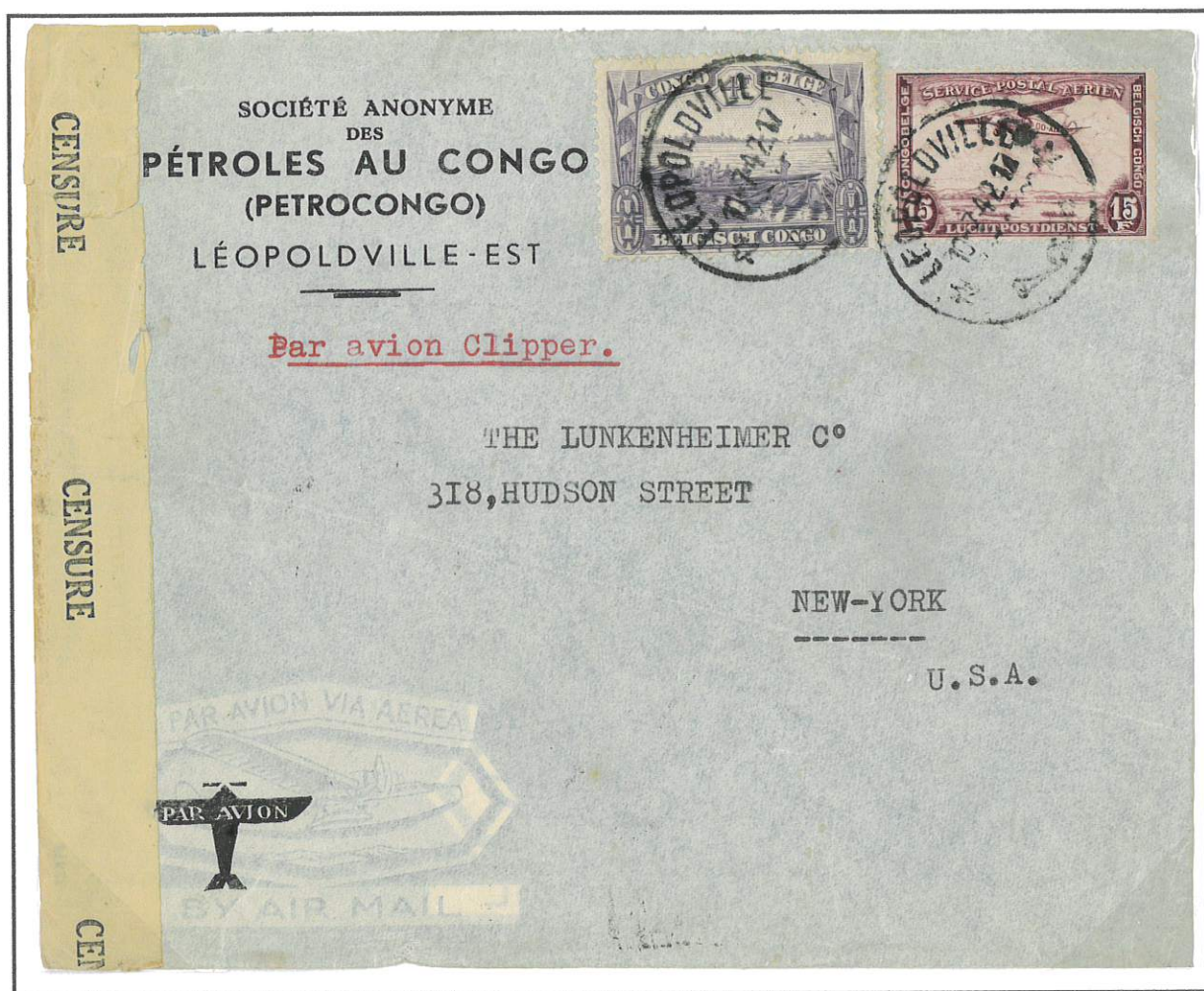
- Route:** Stanleyville-Leopoldville by BOAC flight CL54 on Cairo-Lagos service. Leopoldville-Miami by PanAm flight 6014. Posted Stanleyville 11 June 1942. Depart Leopoldville 13 June 1942. Miami 27 June, New York 27 June.
- Rate:** Inexplicable. Should be surface 3.50Fr. Registration 3.50Fr. Air fee 15.50Fr. making 22.50Fr. but 30.50Fr. on cover?
- Censor:** No Congo censorship. Trinidad Examiner 8xxx.
- Features:** Important cover since it establishes dates for Flight 6013/14 for which no records exist in Pan American Archive records.

8 Fr. added
for BOAC
flight to
Leo.

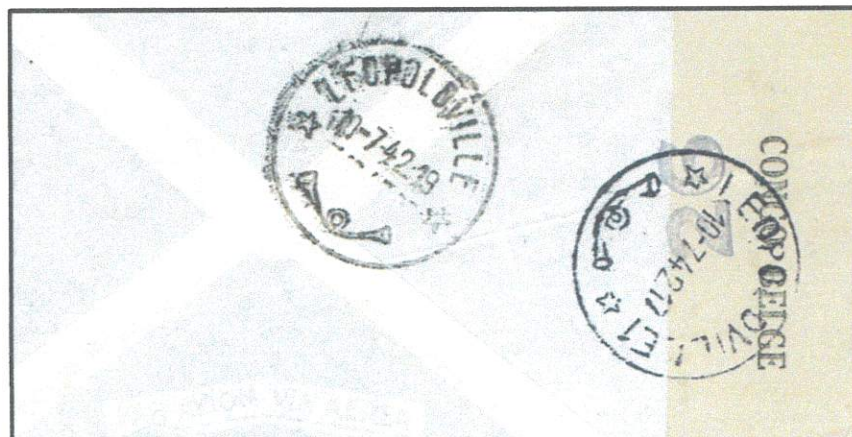


Trans-Atlantic Air mail

Special Mission airmail Congo-United States July 1942



- Route: Leopoldville-Lagos/Accra by Sabena. Accra-Fisherman's Lake by PAA (Africa). Fisherman's Lake-New York on return flight of "5-shuttle" Fish Lake-Natal service. Posted 10 July 1942.
- Rate: 3.50Fr. surface, air fee 15.50Fr. Total on cover 19Fr.
- Censor: Congo Examiner. No further examination.
- Features: Clippers ceased flights to Lagos mid-June 1942 and began a 5-shuttle pattern Natal-Fisherman's Lake-Natal before returning to New York.

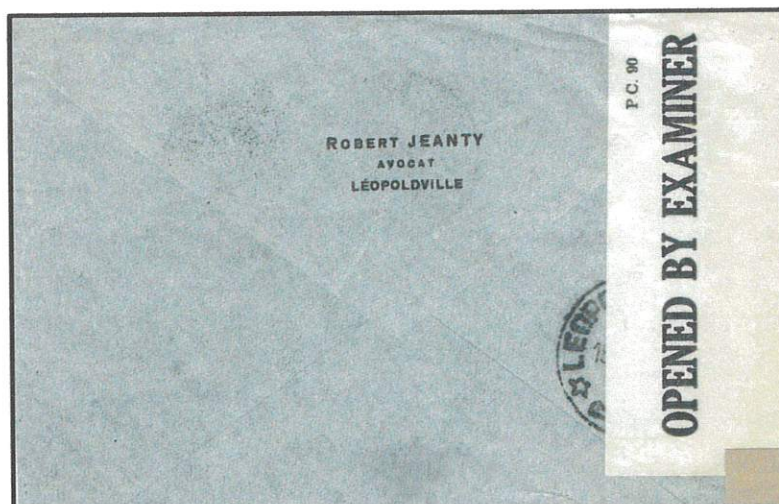


Trans-Atlantic Air mail

Special Mission flight Congo-United States August 1942

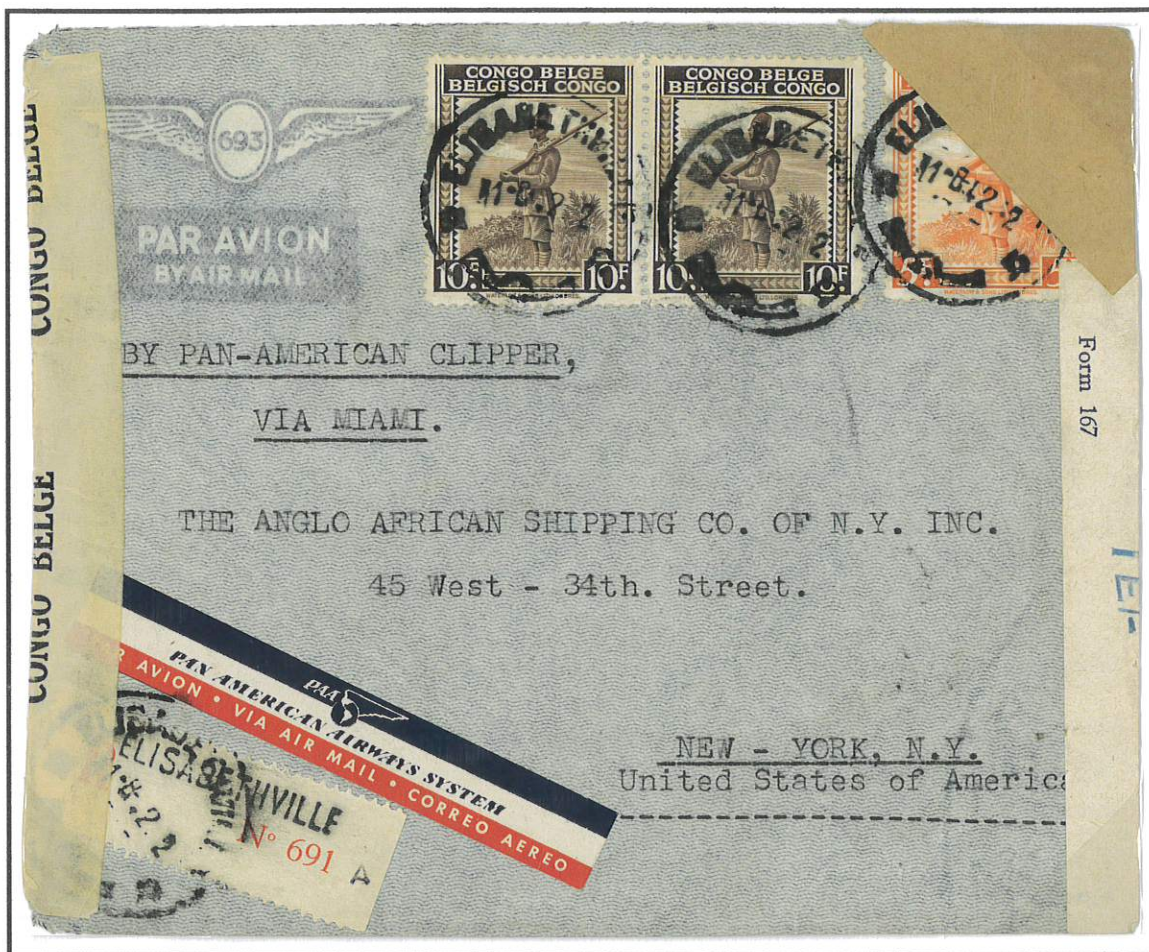


- Route: Leopoldville-Trinidad-New York by Special Mission, bypassing Miami. Posted 18 August 1942.
- Rate: 3.50Fr. surface. 15.50Fr. air fee. Total 19Fr.
- Censor: Trinidad Examiner I/E 8018.
- Features: Special Missions flying a five shuttle pattern Fisherman's Lake-Natal. On final return to New York aircraft flew Natal-Trinidad-San Juan-New York, not diverting to Miami.

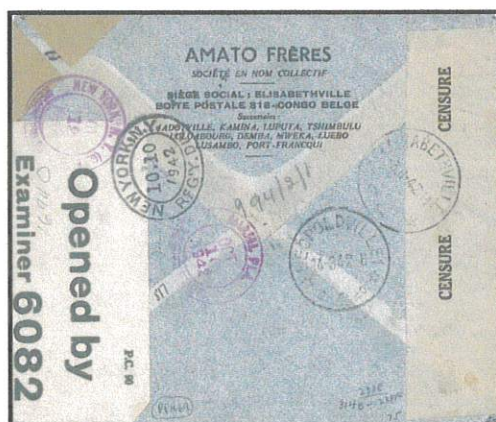


Trans-Atlantic Air mail

Pan American flight 6018 from Belgian Congo to United States August 1942.



- Route: Elizabethville to Leopoldville by Sabena, Leopoldville to Trinidad by FAM-22 6018. Trinidad to Miami by regular service. Despatch Elizabethville 3 August 1942, transit Leopoldville 14 August, arrive Miami 10 October 1942.
- Rate: Fr.3.50 surface; Fr. 3.50 Registration; Internal air mail 1Fr. Transatlantic air fee Fr. 15.50 air fee. Total 23.50. Cover actually carries Fr.25.
- Censor: Resealing label Elizabethville. Trinidad examiner 6082 (IE).
- Features: Carried from Leopoldville on flight 6018. Off loaded at Trinidad for examination and seemingly held there. Other covers examined by 6082 were detained and carry pink slips. (Morenweiser)



Trans-Atlantic Air mail

Pan American flight 6020 from Belgian Congo to United States 1942.



- Route: Leopoldville to New York via Route 6 flight. Despatch Leopoldville 9 September 1942.
- Rate: Fr.3.50 surface; Fr. 15.50 air fee. Total Fr. 19. Fr. 21.75 on cover, possibly intended for registration?
- Censor: Resealing label Leopoldville 31. Trinidad examiner IE 8038.
- Features: Rare example of mail carried on the Pan American Miami-Leopoldville service. Return flight (No. 6020) from Leopoldville. Cover transferred at Trinidad in order to comply with CAB conditions that service was between terminal points Leopoldville and Miami. Mail carried was forwarded to Miami using Pan American local services.

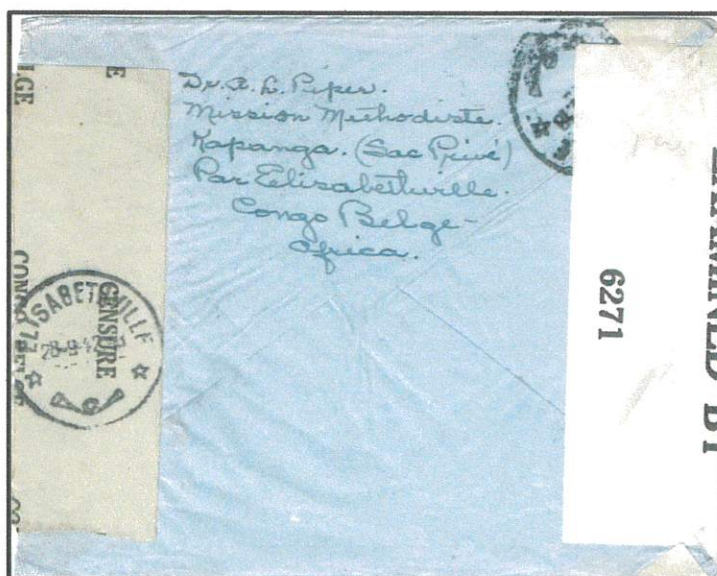


Trans-Atlantic Air mail

Special Mission + Internal airmail Congo-United States September 1942

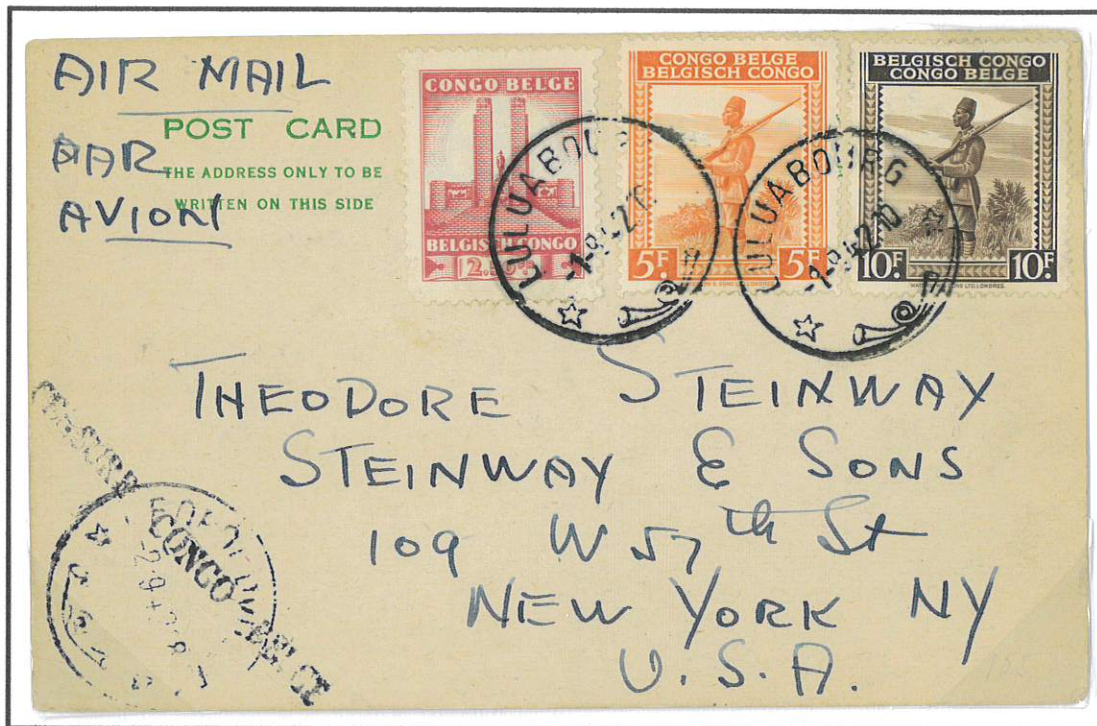


- Route: Elisabethville-Leopoldville air by Sabena. Leopoldville-Lagos by Sabena. Lagos-New York by PanAm special mission. Posted 28 September 1942.
- Rate: 3.50Fr. surface, 1Fr. internal air mail to Leopoldville, air fee 15.50Fr. Total on cover 20Fr.
- Censor: Congo Examiner. New York Examiner 6271.
- Features: Uncommon use of Congo internal air mail service. Endorsed "Leopoldville et Miami".



Trans-Atlantic Air mail

Congo-United States postcard September 1942

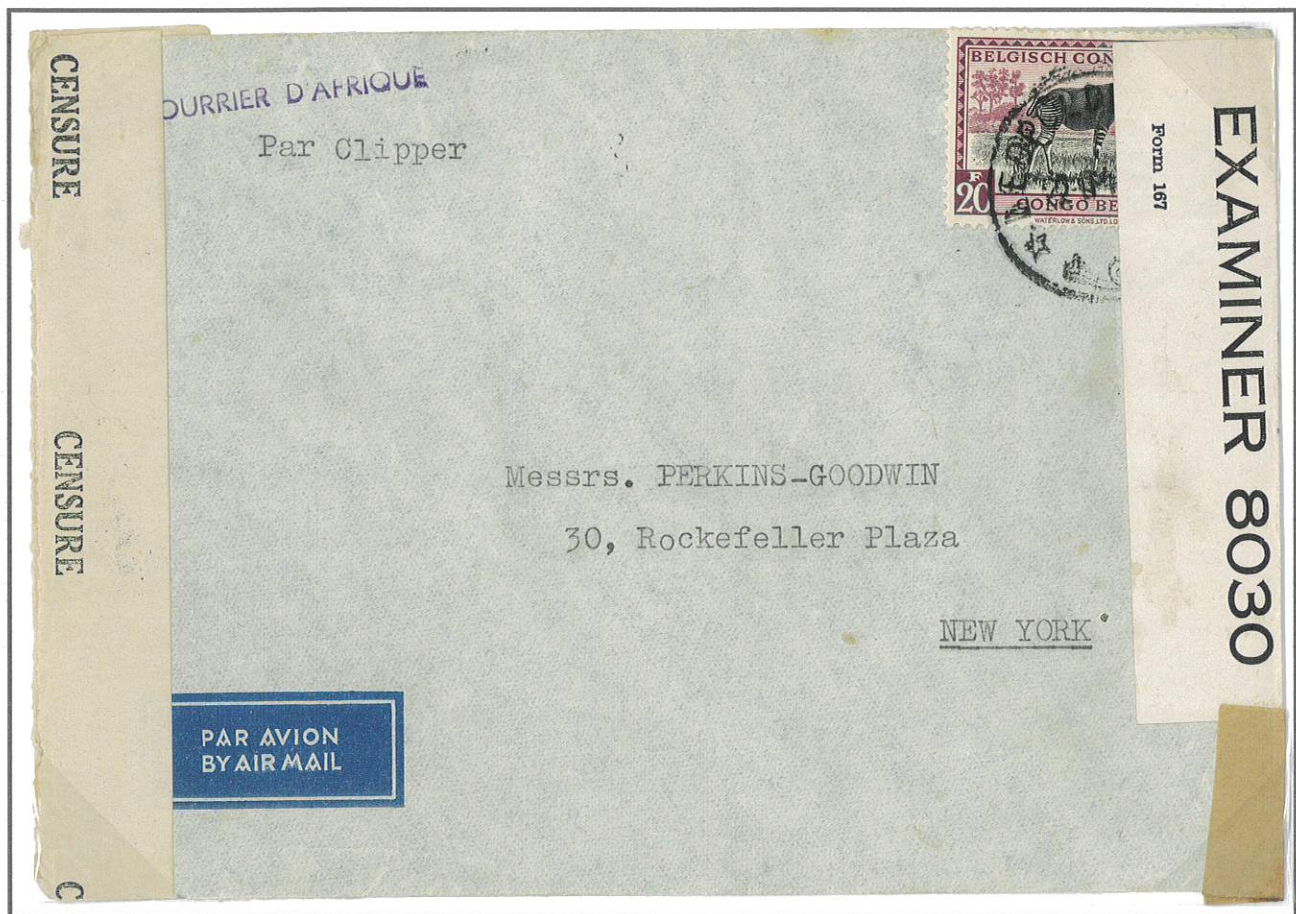


- Route: Luluaborg-Leopoldville by Sabena. Leopoldville-Lagos by Sabena/BOAC. Leopoldville-US by PanAm. Depart Luluaborg 1 September 1942. Depart Leopoldville 3 September 1942.
- Rate: Surface 3.50Fr. Air fee 15.50Fr. Internal Congo air fee 1Fr. Total Total 19Fr.
- Censor: Congo Belge examination mark
- Features: Postcards charged at letter rate. No concessionary rate. Uncommon use of fee for internal flights within Congo. One wonders who was making a trip at this time, presumably en route from US to South Africa via Pan American South Atlantic and Congo? To sell pianos?

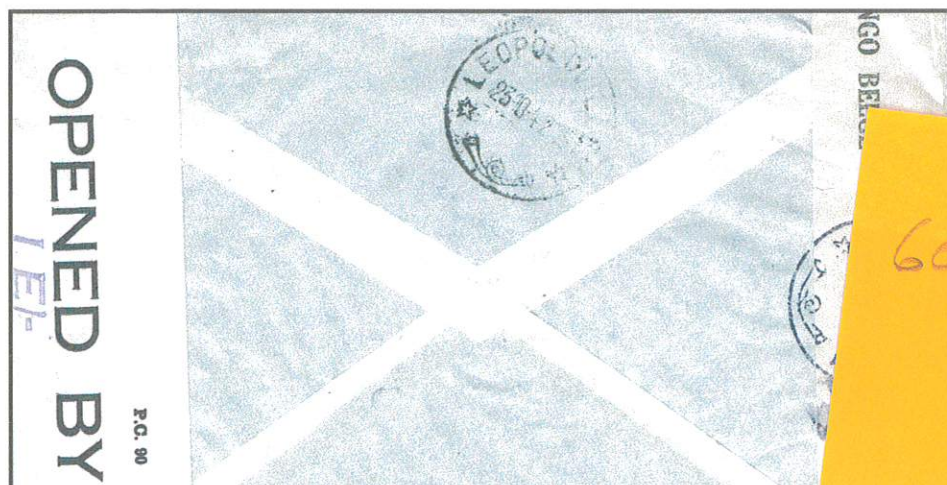


Trans-Atlantic Air mail

Pan American flight 6024 from Belgian Congo to United States 1942.



- Route: Leopoldville to New York via Route 6 flight. Despatch Leopoldville 23 October 1942.
- Rate: Fr.3.50 surface; Fr. 15.50 air fee. Total 19Fr. 20Fr. convenience franking using single stamp.
- Censor: Resealing label Leopoldville 31. Trinidad examiner IE 8030.
- Features: Rare example of mail carried on the Pan American Miami-Leopoldville service. Final flight (No. 6024) from Leopoldville. Cover transferred at Trinidad in order to comply with CAB conditions that service was between terminal points Leopoldville and Miami. Mail carried was forwarded to Miami using Pan American local services.

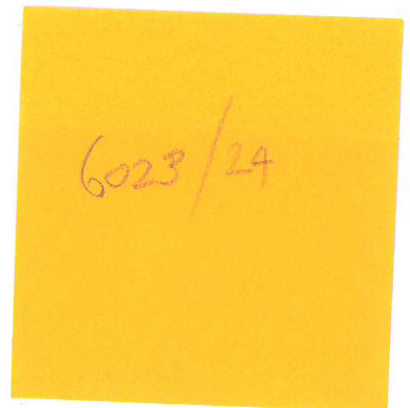


Trans-Atlantic Air mail

Pan American Route 6 final flight from Belgian Congo to United States 1942.



- Route: Leopoldville depart 24 October 1942, transit Trinidad, then FAM-6 to Miami 20 November, New York same day. Flight 6024, the last flight of Route 6 from Leopoldville. Aircraft delayed by hull damage at Fisherman's Lake, then returned to Special Mission service.
- Rate: 3.50Fr. surface fee, 3.50Fr. registration, 15.50Fr. air fee. Total franking 22.50Fr.
- Censor: "Censure Congo Belge" examiner 42. Trinidad opened by examiner IE/8606.
- Features: Showing the end of the so-called "FAM-22" military service from Congo. Interception in Trinidad for censorship then carried to Miami by Pan American South American services.



Trans-Atlantic Air mail

Congo to Argentina via South Africa but re-routed 1943.



- Route: Leopoldville-Lagos by Sabena. Lagos-Natal by sea. Natal-Buenos Aires by surface. Despatch Leopoldville 9 March 1943, Natal transit 8 April, Buenos Aires 25 April..
- Rate: Fr.3.50 surface; Fr. 2 x 2.25 air fee (South Africa rate). Total 8 Fr.
- Censor: Leopoldville Censor 3. Nigeria PP/13.
- Features: Endorsed 'Via South Africa' the cover was actually sent via Nigeria, for which the air fee would have been 2 x 6Fr. Journey times indicate surface all the way from Lagos to Buenos Aires.

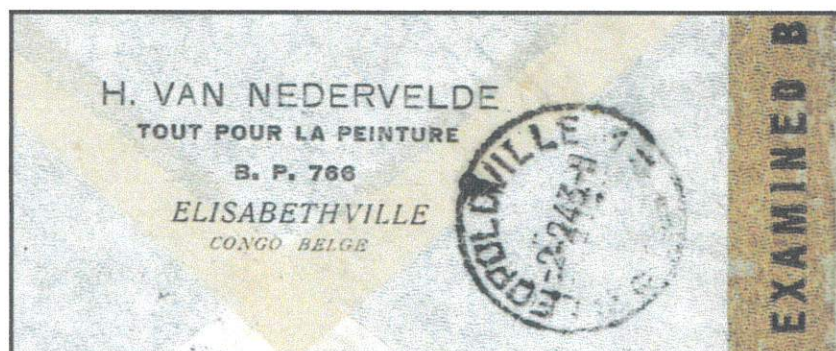


Trans-Atlantic Air mail

Special Mission mail Congo to United States February 1943



- Route: Leopoldville-Lagos/Accra by Sabena/BOAC. Accra-Fisherman's Lake by militarised PanAm (Africa). Fisherman's Lake-Natal shuttle by Special Mission. Natal-Miami by FAM-6.
- Rate: 3.50Fr. surface, 15.50Fr. air fee. Total 19Fr.
- Censor: No Congo censor. New York Examiner 7020.
- Features: Departed Leopoldville 2 February 1942. Multi-stage journey. Mail addressed to New York was bagged-through Miami.



Trans-Atlantic Air mail
ATC flight Congo-United States March 1943



- Route: Leopoldville-Lagos/Accra by Sabena. Accra-Miami by Air Transport Command. Posted 17 March 1943.
- Rate: 3.50Fr. surface. 15.50Fr. air fee. Total 19Fr. Convenience payment 20Fr.
- Censor: Congo Examiner 3. Miami Examiner 30064.
- Features: Common use of 20Fr. stamp to conveniently pay 19Fr. charge. Sabena carriage to Lagos-Accra to connect with Air Transport Command flights to Miami. Note "Via Lagos" endorsement.



Trans-Atlantic Air mail

Air-Sea-Air Congo-Switzerland via UK May 1943



- Route: Albertville-Stanleyville-Lagos-Takoradi by Sabena. Takoradi-UK by sea, since no air service northbound for foreign mail. London-Lisbon after censorship by BOAC/KLM. Lisbon-Paris by German service for censorship. Paris-Geneva by Lufhansa. Posted 31 March 1943. Arrive Switzerland 29 July 1943.
- Rate: 3.50Fr. surface, 2 x 8.50Fr air fee. Total 20.50Fr. on cover.
- Censor: Albertville examiner 3. Lagos PP/13. OKW Paris code 'X'.
- Features: 'Air Mail' cancelled by two bars in London to indicate that cover had not been transported by air from West Africa. Exceptional cover and an amazing journey.



Trans-Atlantic Air mail

Pan American "Special Mission" flights from West Africa to United States 1943.



- Route:** Stanleyville to New York via Lagos and Fisherman's Lake. Despatch 10 May 1943.
- Rate:** Fr.3.50 surface; Fr. 15.50 air fee. Total Fr.19. Cover also carries two stamps correctly invalidated by a bold "O" applied in Congo before censorship in Lagos.
- Censor:** Handstamp "Censure Congo Belge". Censored in Lagos PP/15. Censored in New York 5144.
- Features:** In 1943, Pan American flew clandestine "Special Missions" from Miami to Fisherman's Lake with five shuttle flights Natal-Fisherman's Lake before returning to New York for maintenance. A service existed from 20 March to 11 July 1943 between Lagos-Takoradi-Marshall (Liberia) and Freetown, so this cover probably used that service, with transfer at Marshall to Fisherman's Lake by USATC.



Trans-Atlantic Air mail

Air Transport Command Congo-United States May 1943



- Route: Leopoldville-Lagos/Accra by Sabena. Accra-Miami by ATC. Miami-New York internal service. Posted 17 May 1944.
- Rate: 3.50Fr. surface, 4 x 15.50Fr air fee. Total 65.50Fr. on cover.
- Censor: Leopoldville Examiner 49. New York examiner tape missing.
- Features: High rate, weight 20-25g.



Trans-Atlantic Air mail

Air Transport Command Congo-United States May 1943



- Route: Elisabethville-Leopoldville-Lagos/Accra by Sabena. Accra-Miami by ATC. Miami-New York internal service. Posted 23 May 1943.
- Rate: 3.50Fr. surface, air fee 15.50Fr. Total on cover 19Fr.
- Censor: Congo Examiner. No further examination.
- Features: Mail exchange point Lagos. ATC Lagos-Accra-Miami.



Trans-Atlantic Air/Sea mail

Internal airmail Congo-United States March 1944

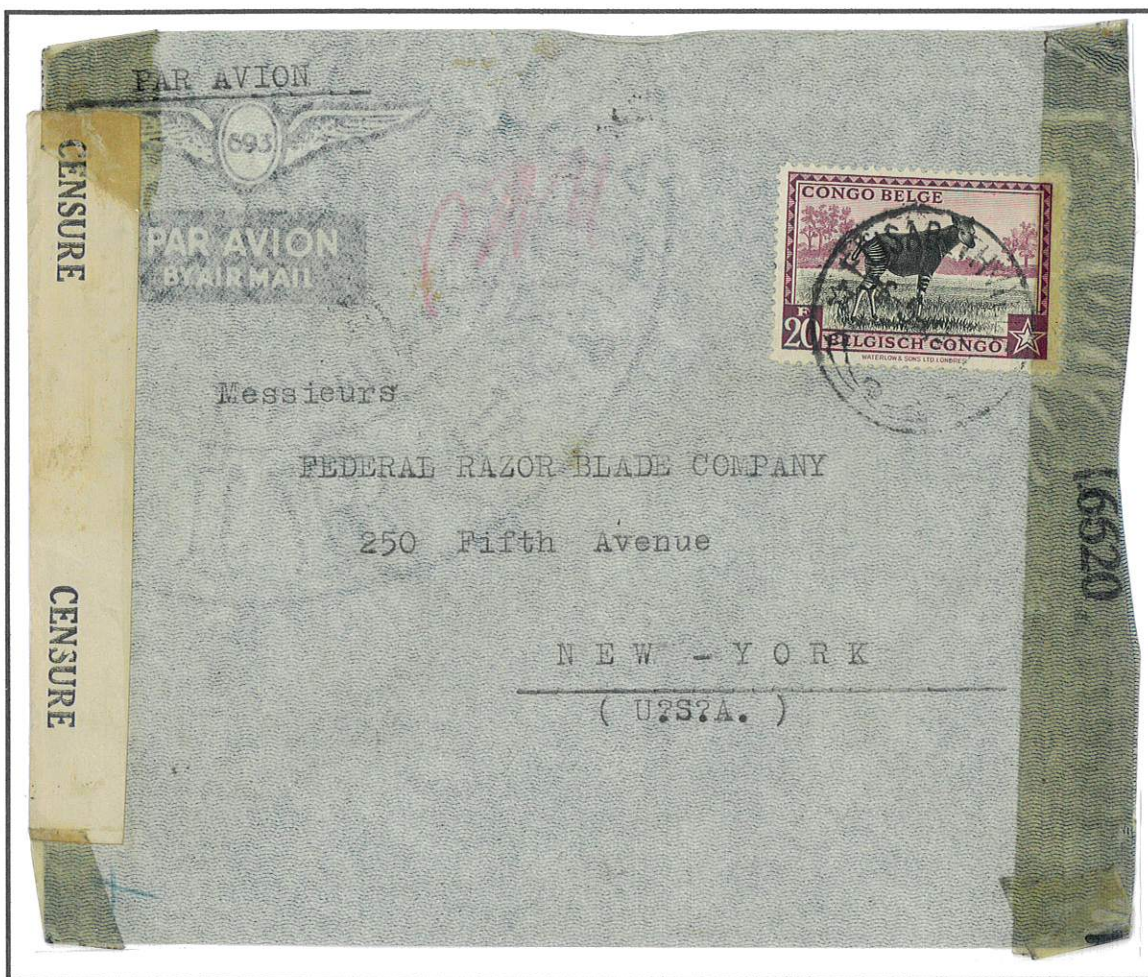


- Route: Leopoldville-Boma air by Sabena. Boma-Matadi surface. Matadi-New York by sea.
- Rate: 3.50Fr. surface, 2Fr. second step, 3.50 registration, 4 x 1Fr./5g internal air mail Leopoldville-Boma. Total on cover 13Fr. correct for a cover weighing 20-25g.
- Censor: Congo Examiner 2. New York Examiner 5323.
- Features: Rare use of Congo internal air mail service. Matadi 15 October 1944, N.Y. arrival 21 November.



Trans-Atlantic Air mail

Air Transport Command Congo-United States May 1944



- Route: Elisabethville-Leopoldville-Lagos/Accra by Sabena. Accra-Miami by ATC. Miami-New York internal service. Posted 7 May 1944. Leopoldville 9 May.
- Rate: 3.50Fr. surface, air fee, 1Fr. internal airmail, 15.50Fr. air fee. Total 20Fr.
- Censor: Elisabethville Examiner 3. New York examiner 6620.
- Features: Use of Congo internal airmail. Mail bagged through Miami to New York addresses.



Trans-Atlantic Air mail
ATC flight Congo-United States May 1944



- Route: Leopoldville-Lagos/Accra by Sabena. Accra-Miami by Air Transport Command. Leopoldville depart 1 May 1944.
- Rate: 15.50Fr. air fee. Apparently 3.50Fr. surface fee not paid, but cover carried nonetheless.
- Censor: Congo Examiner 29. New York Examiner 6799.
- Features: Mail addressed to New York was passed through Miami unexamined.



Trans-Atlantic Air mail

Air Transport Command Congo-United States June 1944



- Route: Leopoldville-Lagos/Accra by Sabena. Accra-Miami by ATC. Miami-New York internal service. Posted 29 June 1944.
- Rate: Incomprehensible. 3.50Fr. surface leaves 52Fr. corresponding to no known calculation.
- Censor: Leopoldville Examiner 15.
- Features: Inexplicable franking. Correct air fee/5g was 15.50Fr. $3 \times \text{fee} = 46.50$; $4 \times \text{fee} = 62\text{Fr.}$ Commercial cover so no reason for philatelic franking?



Trans-Atlantic Air mail
ATC flight Congo-United States June 1944



- Route: Leopoldville-Lagos/Accra by Sabena. Accra-Miami by Air Transport Command. Posted Elisabethville 20 June. Leopoldville depart 22 June 1944.
- Rate: 3.50Fr. surface. 2 x 15.50Fr. air fee. Total 34.50Fr. 50c. overpaid (Convenience franking).
- Censor: Congo Examiner 6. New York Examiner 5883.
- Features: Mail addressed to New York was passed through Miami, but note Miami "blue tick" transit check at lower left, confirming route through Miami

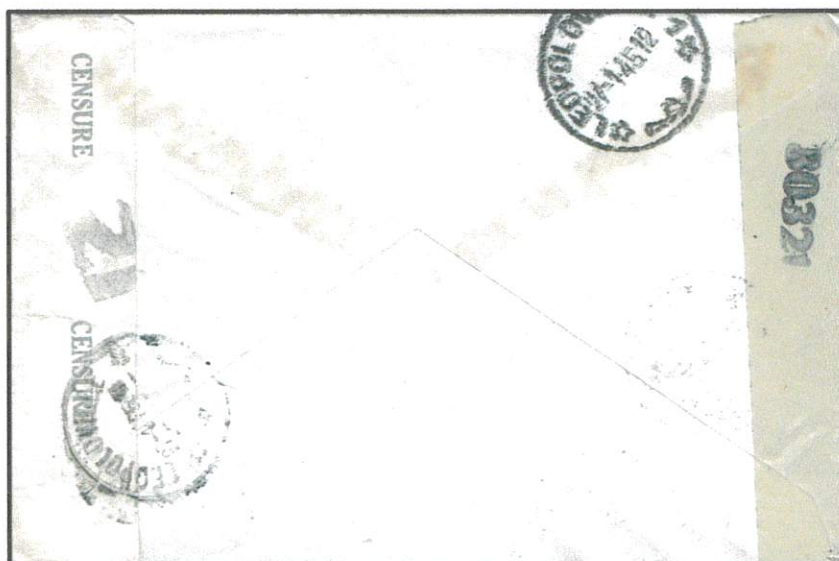


Trans-Atlantic Air mail

Air Transport Command Congo-United States January 1945



- Route: Libenge-Leopoldville-Lagos/Accra by Sabena. Accra-Miami by ATC. Miami-New York internal service. Posted 23 January 1945.
- Rate: 3.50Fr. surface, air fee 15Fr. Total on cover 18.50Fr. This is incorrect use of September 1944 tariff. The air fee was reduced to 12.50Fr. in November 1944.
- Censor: Leopoldville Examiner 21. Miami examiner 30321.
- Features: Mail exchange point Lagos. ATC Lagos-Accra-Miami.



Trans-Atlantic Air mail

ATC flight Congo-United States January 1945



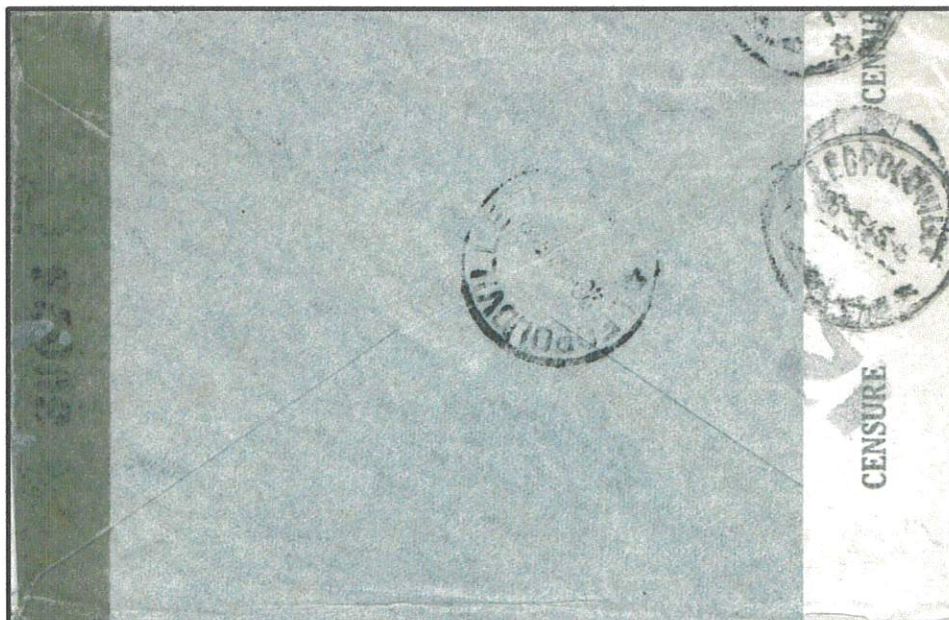
- Route: Leopoldville-Lagos/Accra by Sabena. Accra-Miami by Air Transport Command. Posted Elisabethville 12 January. Leopoldville depart 15 January 1945.
- Rate: 3.50Fr. surface. 12.50Fr. air fee. Total 16Fr. New reduced air fee November 1944.
- Censor: Congo Examiner 3. Miami Examiner 30990.
- Features: Too late to catch the final flight of "China Clipper" which left Leopoldville 28 December. Flights ended with crash of "China Clipper" at Trinidad.



Trans-Atlantic Air mail
ATC flight Congo-United States January 1945



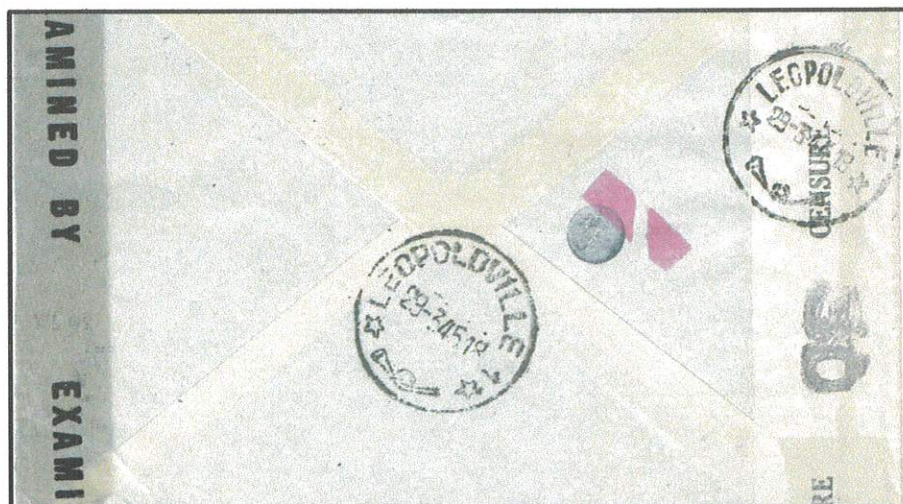
- Route: Leopoldville-Lagos/Accra by Sabena. Accra-Miami by Air Transport Command. Leopoldville depart 26 January 1945.
- Rate: 3.50Fr. surface. 12.50Fr. air fee. Total 16Fr. New reduced air fee November 1944.
- Censor: Congo Examiner 12. Miami Examiner 30075.
- Features: Too late to catch the final flight of "China Clipper" which left Leopoldville 28 December. Flights ended with crash of "China Clipper" at Trinidad.



Trans-Atlantic Air mail
ATC flight Congo-United States March 1945

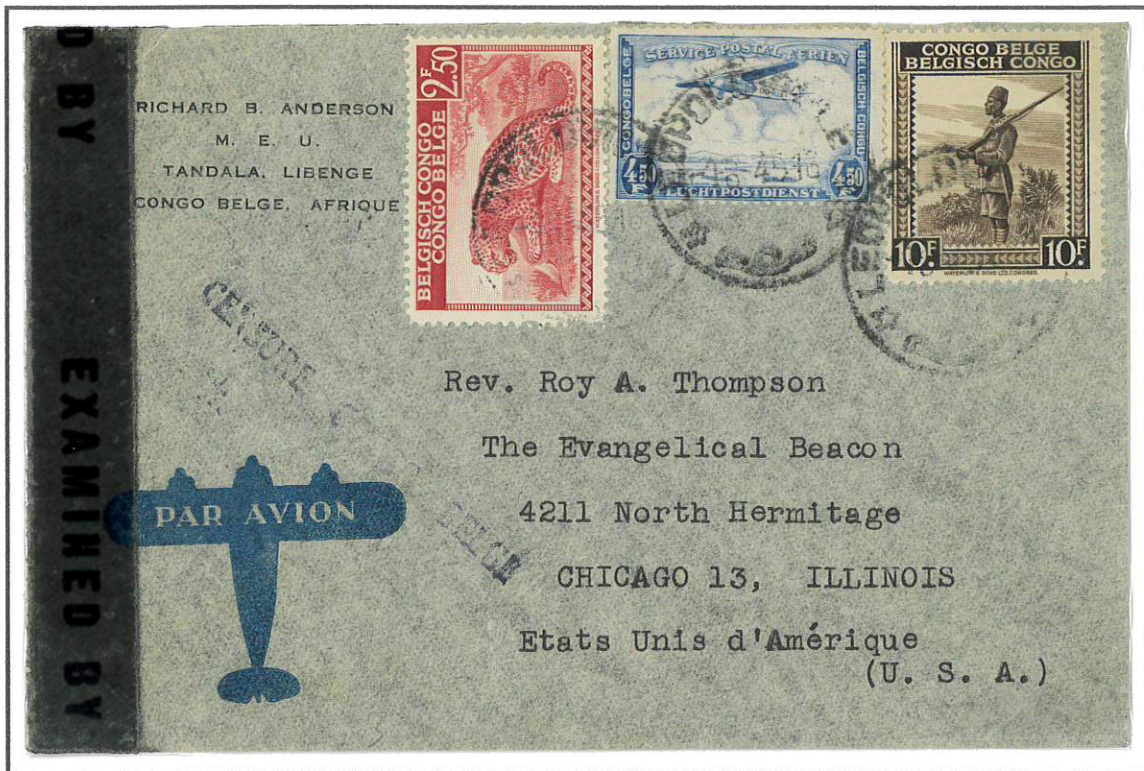


- Route: Leopoldville-Lagos/Accra by Sabena. Accra-Miami by Air Transport Command. Leopoldville depart 29 March 1945.
- Rate: 3.50Fr. surface. 12.50Fr. air fee. Total 16Fr. New reduced air fee November 1944.
- Censor: Congo Examiner 30. New York Examiner 8074.
- Features: "Sadonia" suspected of being undercover address at 30 Rockefeller. New York censor "Bar and spot" queries on cover. (Broderick & Mayo page 102).

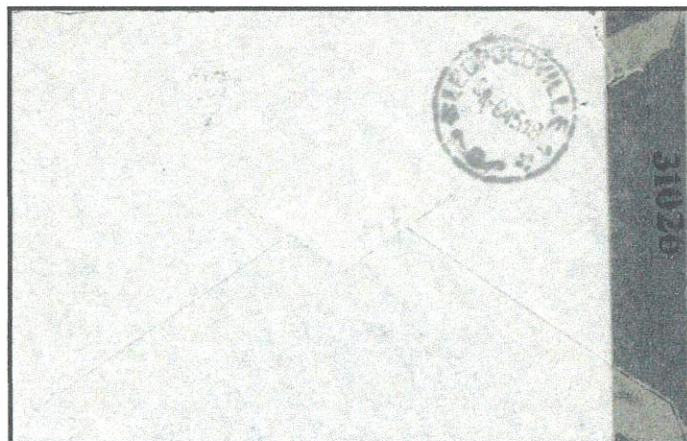


Trans-Atlantic Air mail

Special Mission mail Congo to United States June 1945

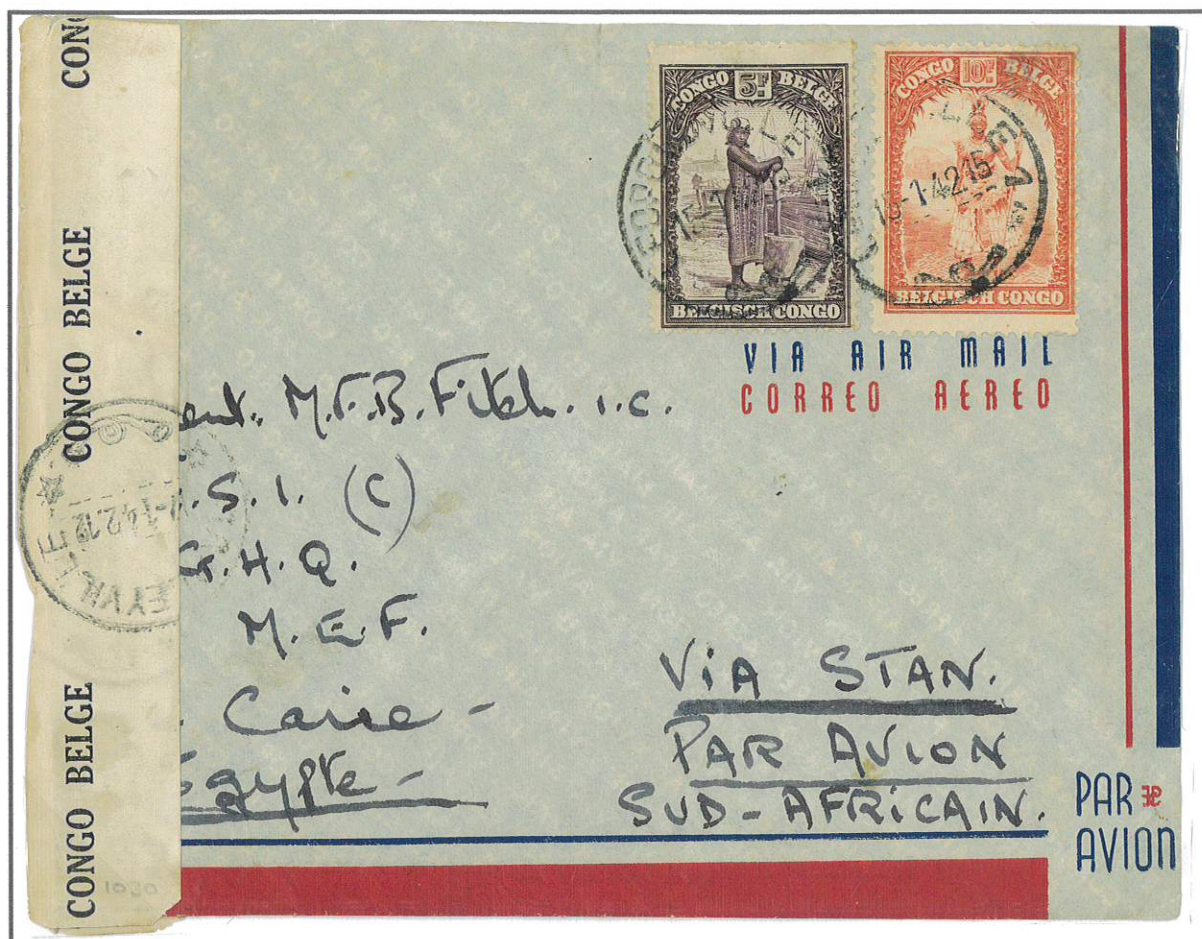


- Route: Leopoldville-Lagos/Accra by Sabena/BOAC. Accra-Miami by ATC.
- Rate: 3.50Fr. surface, 12.50Fr. air fee (From November 1944). Total 16Fr. Overpaid 1Fr.
- Censor: Leopoldville straight line censor. Miami Examiner 31026.
- Features: Departed Leopoldville 4 June 1945 after war in Europe ended, but route still by ATC to Miami. Apparently over-franked by 1Fr. but sender's address at Libenge may indicate payment in error of 1Fr. internal airmail fee.



Trans-Africa Air mail

Congo-Egypt via Sabena Charter January 1942



- Route: Leopoldville-Stanleyville by South African Airlines. Stanleyville-Cairo by Sabena under contract to BOAC. Leopoldville 15 January 1942. Stanleyville 17 January 1942.
- Rate: 3.50Fr. surface, 2 x 6.75Fr air fee. Total 17Fr. on cover. (Ordonnance 484/P.T.)
- Censor: Stanleyville examiner. No other censorship.
- Features: Use of the Sabena route Takoradi-Cairo BOAC charter that did not call at Leopoldville, so connection from Leopoldville had to be made at Stanleyville.

