

CARRIER STAMPS

Government Issue

1851

Original Issue



1875

Reprints of 1851 Issue

Imperforate

Franklin

1 C

DARK BLUE

ON ROSE

Perforated

Eagle

1 C

BLUE

Semi-Official Issues

Baltimore, Md.

1852



1 C

BLUE ON
BLUISH

(1804)

1 C

RED

(1807)

1 C

RED ON
BLUISH

(1803)

1 C

GREEN

(1806)

1856



1 C

RED

(1809)

1857



1 C

RED

1 L 8 9
(1811)

Boston, Mass.

1849-50



1 C

BLUE ON
BLUISH

(1815)

Charleston, S. C.

1849



2 C

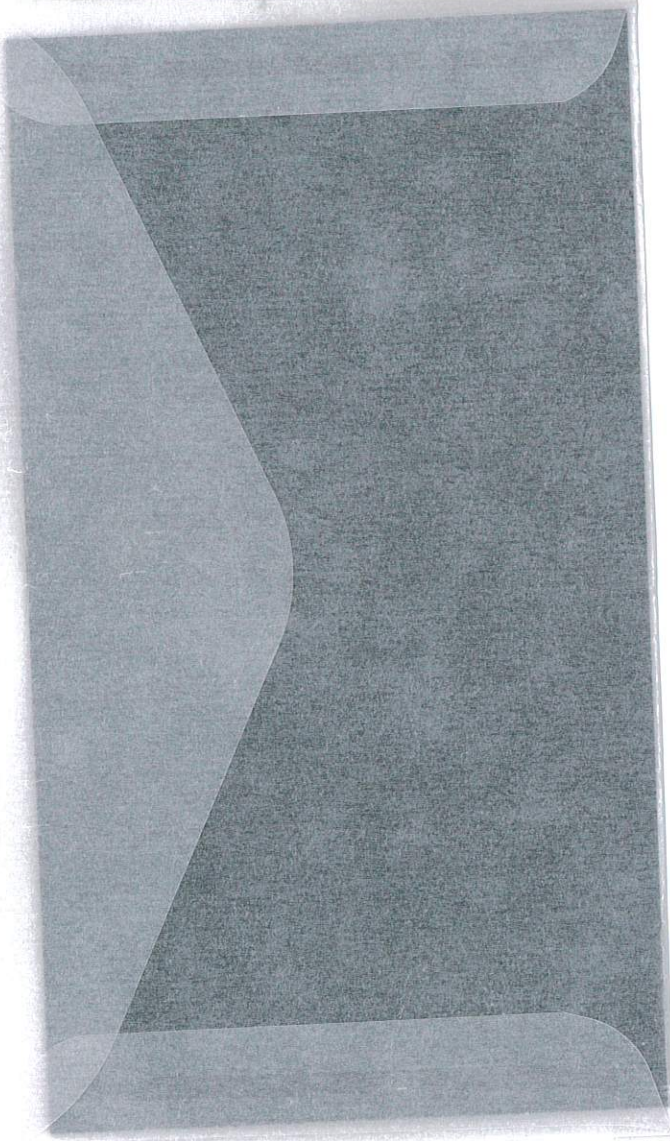
BLACK ON
YELLOW

(1817)

1854



47611



907

Cat Price _____
Selling Price _____

1437

Cat Price _____
Selling Price _____



MADE IN CANADA



FORM 104



US
LOCAL - Utica
va
Express/mint

4.5





11727



782

5568172975 Keyharbor 33⁰⁰ 13761
1852 Pair



Trese & Co Penny Post
Philadelphia PA

Forgery A (Hussey)
Blue on Bluish



E. N. SAMPSON
6410 No. Olympia St.,
Chicago 31, Ill.



Kindly make returns within ten days. Do not soil or tear this sheet.
Please fold each sheet separately.

395
#90

SI

Guaranteed Genuine

Value \$



15214 100/50

521 10/25 202017 1.00



321 25/15

15218 100/50

20253 20/15 20245 25/10



20256 15/10

20254 15/10

13121 10/10



20235 50/30



HEA



20218 3.00/50

6421 5/5

8726 1/50

20235 50/30

LOCALS REPRINTS & FORGERIES



1525
1845



3721
1849



9622
1844



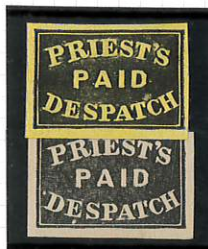
9622
1844



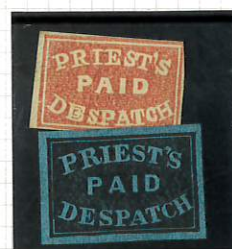
11261
1856



11262
1856



12162
12163
1854



12164
12165
1854



12165
1854



12861 X MB
1855



13262
1859



136614
1853



14363
1861



14363
1861



14561
1853



14961
1844



UNKNOWN
?



1688
1857



1689
1857

SPECIAL OFFER OF
Trial Color Proofs - American Letter Mail Co.

ENTIRE SET 25c.

ENTIRE SET 25c.

Prior to the establishment of our Post Office Department letters were carried by independent mail routes.

One of the pioneer companies was the American Letter Mail Company; established in 1844 by Lysander Spooner. It consisted of a route from Boston to Philadelphia and way points. The original stamps were issued in black in sheets of 20, and sold to the public in full sheets. Therefore the wording on the enclosed specimens "20 for a Dollar" indicates that the postage rate was 5c. a letter.

At a later date, proofs taken from the original plate were printed in 6 different colors.

We can also furnish these proofs in blocks of four at 90c. and in full sheets of 20 for only \$4.00.

T. K. BARKER & COMPANY

714 MARKET ST.
SAN FRANCISCO



5TC
1844

LOCALS



107LU1
METRO-EXPRESS
1855



6LB5
CITY DISPATCH
1842



13221
Squire & Co
1859



1438
CITY DISPATCH
1857



14367



14328



14349



143L3



143 L 4

PONEY EXPRESS
1862-64



L02
EAGLE
1851



L 63
FRANKLIN
1875



LO 5
EAGLE
1875



LOZ
EAGLE
1854



14345

U.S. Locals Study Lot
Originals & Reprints



WONDERFUL U.S. Locals
collection Reprints & originals
+ lowest row previous page



Private Postal Service



1844-541



1855-1541?



1848-1842



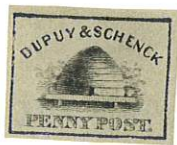
1854-2010



1851-2012



1862-3841?



1846-6041



1855-12041?



1849-1254?



Charleston
51-58



4405R

Louisville
57-58



R

Phila.
49-50



7401R

Semi-Official Issues
Baltimore
52



R

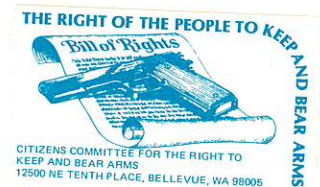
Balt
56



1407R



Reprints



025

Locals Page 559

Wells Fargo

1430



net 5-

143 L2

four



175- 10-

143 L5

four



250- 10-

143 L3

one



45- 10-

consecutive
Page 605

J. L. RIDDEL

NEW
ORLEANS

#62 X2

200.-



5-

CARRIER STAMPS - Semi-Official Issues

*All
given
in*

Issued by United States City Despatch Post

New York City - 1842 - 1845



6 L B 5

3¢ Black on Blue Paper



6 L B 6

3¢ Black on Green Paper

Issued by the Postmaster of Baltimore, Md. 1857



1 L B 8



1 L B 8a
("SENT")



1 L B 8b
(short rays)



1 L B 9

LOCAL STAMPS



Institute Hamb.
Boten ½



Down's Dispatch
one cent



Eagle City Post
PAID 80
Chestnut St.
ADAMS EXPRESS



Hourly Express Post
Letter Stamp
one cent



Union Dispatch
.5
Five cents



Winans
City Post
10 cents

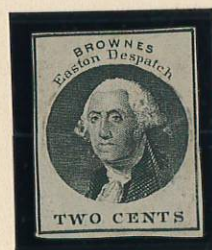
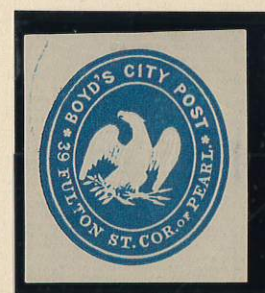


LOCAL STAMPS



gun

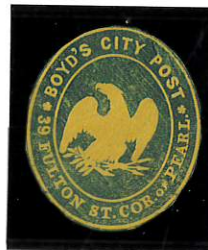
Pomeroys Letter Express
Established in 1844 by George E. Pomeroys,
Carried mail principally to points in New York State.



LOCAL STAMPS



Douglas City Dispatch
251 Broadway



Boyd's City Post
39 Fulton St. Corner
of Pearl

The

GIMBEL

MINT SHEET FILE

CONTENTS

PAGE	PAGE
1	13
2	14
3	15
4	16
5	17
6	18
7	19
8	20
9	21
10	22
11	23
12	24

