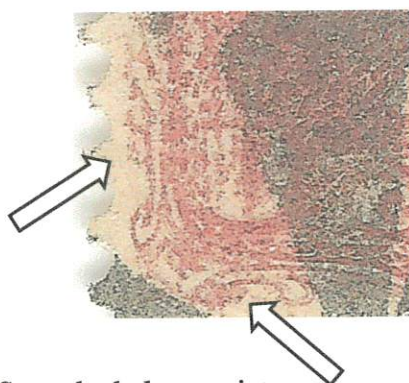


#### Plate varieties

Discovery copy

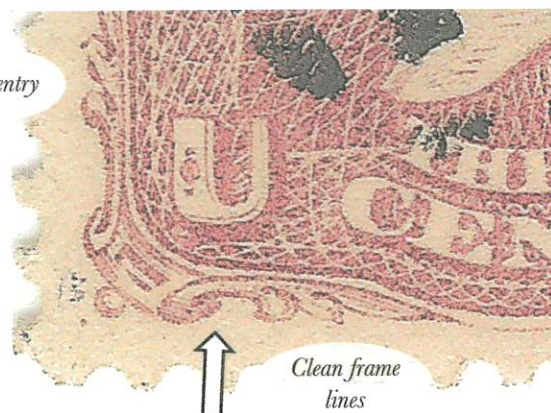


Re-entry



Scan of the **normal** stamp for comparison

No re-entry



Clean frame lines

Discovery copy: Scratched plate variety



Scratched plate

When one considers that more than 2 billion of the stamps were issued, the 1861 USA 3c is remarkable for how **few plate varieties** have been found. The **quality control** in relation to printing contrasts quite sharply with the relatively poor control over ink variations and shades.



8/31/40 "STAMPS" MAGAZINE

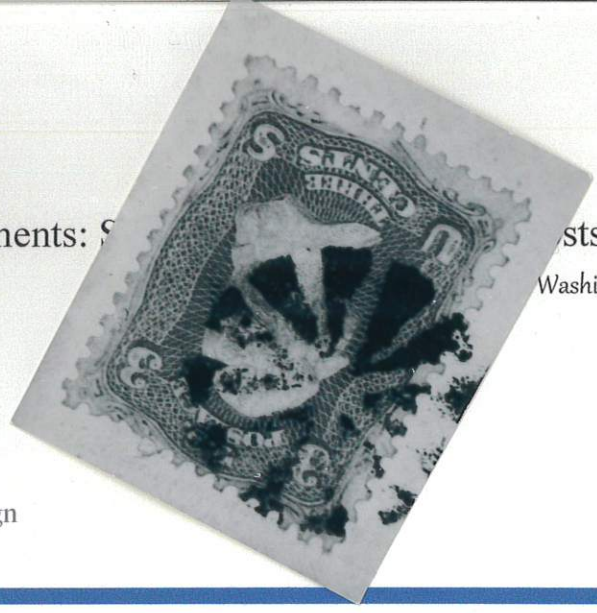
# U.S. Varieties

A weekly column of general information on United States postage stamps conducted by George B. Sloane, 116 Nassau St., New York, N. Y., recognized expert and authority. News comments, illustrated plate varieties and other features of interest.



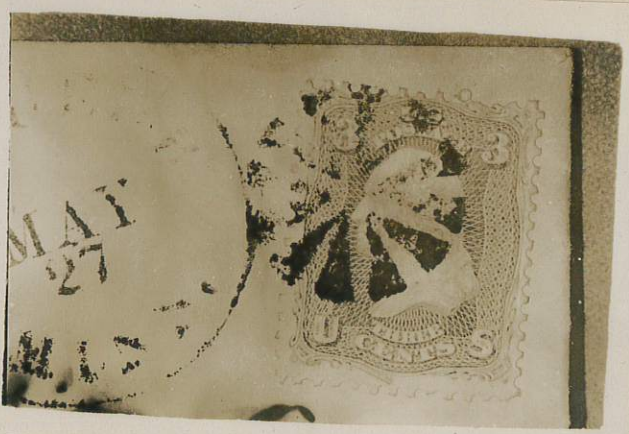
Additional Experiments: S

sts  
Washington: 1861-69



on the 1861 design

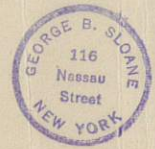
some enlargement of stamp it looks like engraved



photos + negative when they  
one. Will forward cover if you  
Many Thanks.

rely.  
Daniel H. Gotthardt  
215 Victoria St  
Merchantville, N. J.

Think I would be better able to  
determine whether or not a plate variety  
by seeing the stamp itself. Sincerely Geo B Sloane



Apparant a plate variety. Have retained  
due to a garb. Have retained  
one of your photos and will try  
to mention variety in a future  
Column. Sincerely Geo B Sloane

Note the extra lattice work. may be the only dark red-brown example known on card



#### Battered plates



#### Perforated twice



Vertically



Horizontally

#### Errors caused by folded paper

##### Wild perforations



##### Misprints due to fold-overs

