

W. R. WEISS, JR.
P.O. Box 5358
Bethlehem, PA 18015
(610) 691-6857

Opinion No. 5 U67a25 Date 10/01/12

I have examined the enclosed United States 9¢ 1865
Unused 40X40mm Orange
Yellow on Buff Full Corner (Scott U67a)

for D. Wharton

and my opinion is; _____
It is sound and genuine in all respects.

A photograph is attached below.



Signed _____

Member:
American Philatelic Society (Life Member)
United States Stamp Society, U.S. Philatelic Classics Society
U.S. Cancellation Club, U.S. Postal Stationary Society

Established 1972



The Philatelic Foundation

501 Fifth Avenue • Suite 1901
New York, NY 10017

EXPERT COMMITTEE

No. 0299224
3/13/96

We have examined the enclosed item, of which a photograph is attached, and *described by the applicant* as follows:

Country: UNITED STATES OF AMERICA

Cat. No.	Issue	Denom.	Color
<u>U32</u>	<u>1860</u>	<u>10¢</u>	<u>green</u>

Scott's unless otherwise specified.

USED
CUT SQUARE.

AND WE ARE OF THE OPINION THAT:

IT IS GENUINE WITH A MANUSCRIPT CANCELLATION
MOVED * * * * *




For The Expert Committee
Chairman

Photocopies of this Certificate are not valid.

Submitted by N.C. WITBECK



No. 36 515

June 30, 1999

Professional Stamp Experts, Inc.
P.O. Box 43-0055, Miami, FL 33243 • (305) 670-1920

Authentication Committee

We have examined the enclosed item submitted to PSE, Inc. of which the photo is attached with seal and are of the opinion that:

Cat. #	Issue	Denom.	Color
<u>US#W51</u>	<u>1864</u>	<u>2 Cent</u>	<u>Black/Dk.Manila</u>

"it is genuine unused, part wrapper with vertical crease through right side of indicia".

Philatelic Consultants:

1. R. Champagne 2. J. Solens 3. R. Shoemaker


Chairman, Board of Philatelic Consultants



United States Envelope Cut Squares

U1 - U8

Washington
1853-55

Die



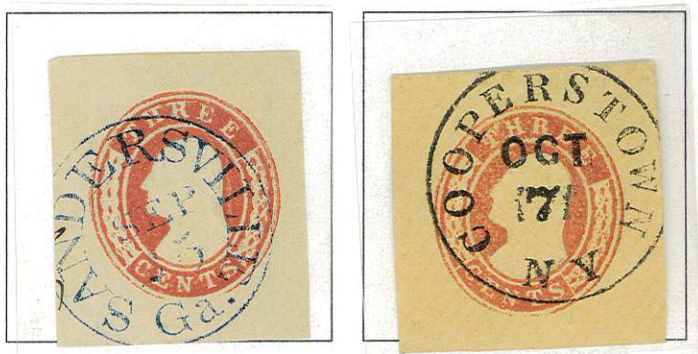
Die 2



Die 3



Die 4



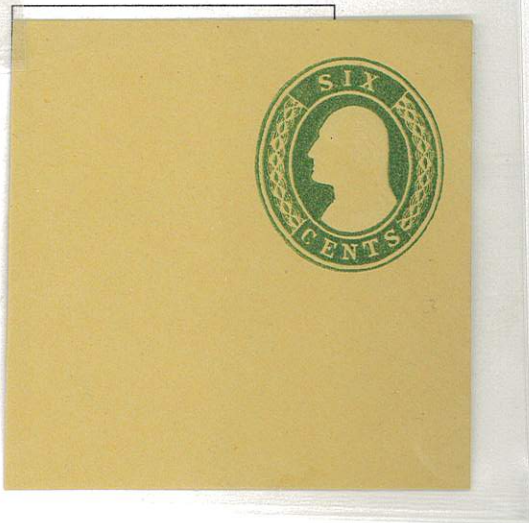
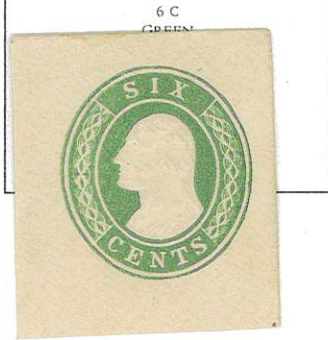
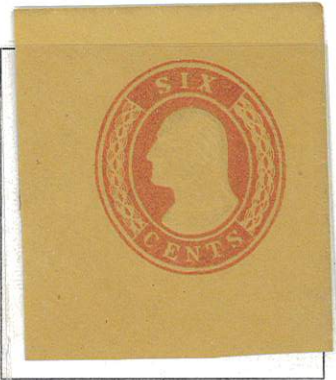
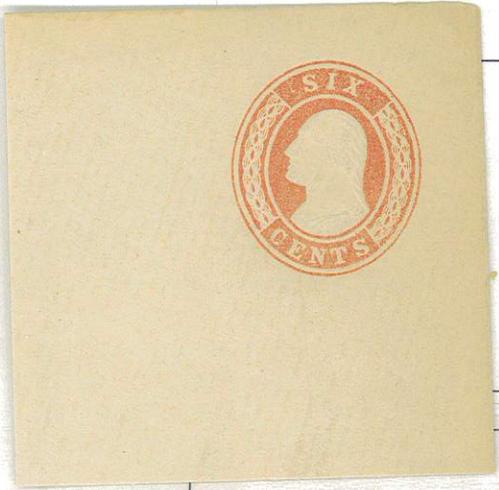
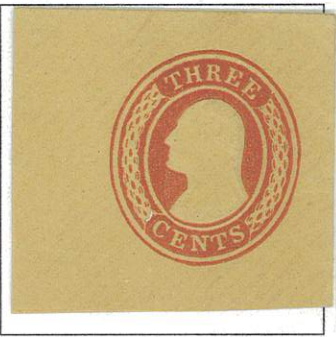
United States Envelope Cut Squares

U9 - U14

Washington

1853-55

Die 5

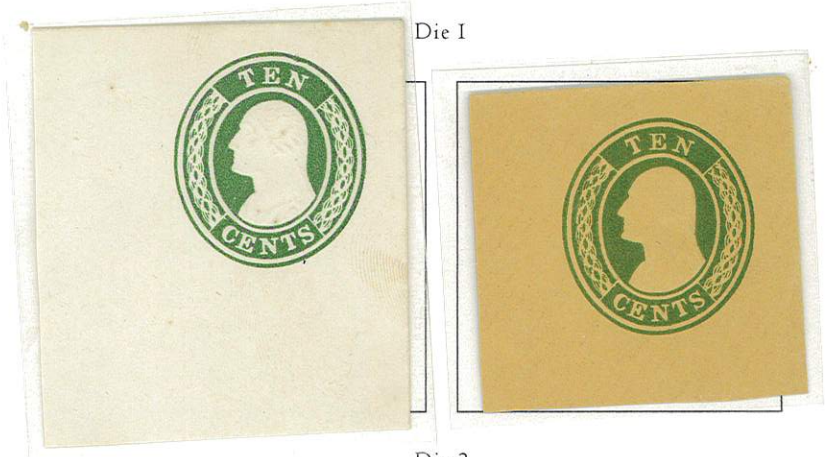


U15 - U18

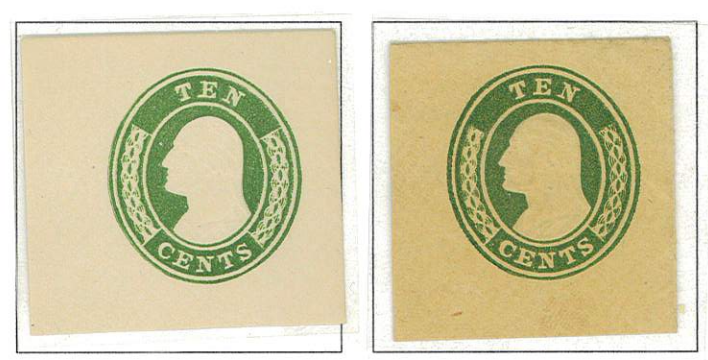
United States Envelope Cut Squares

Washington
1853-55

Die 1



Die 2

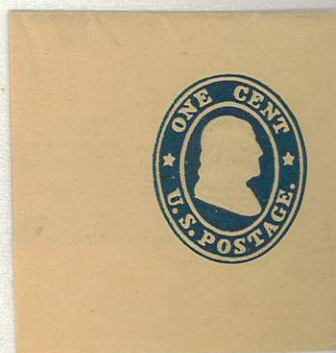
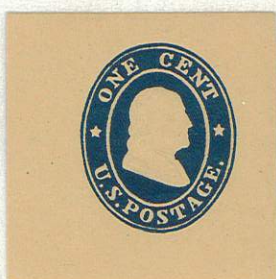


United States Envelope Cut Squares

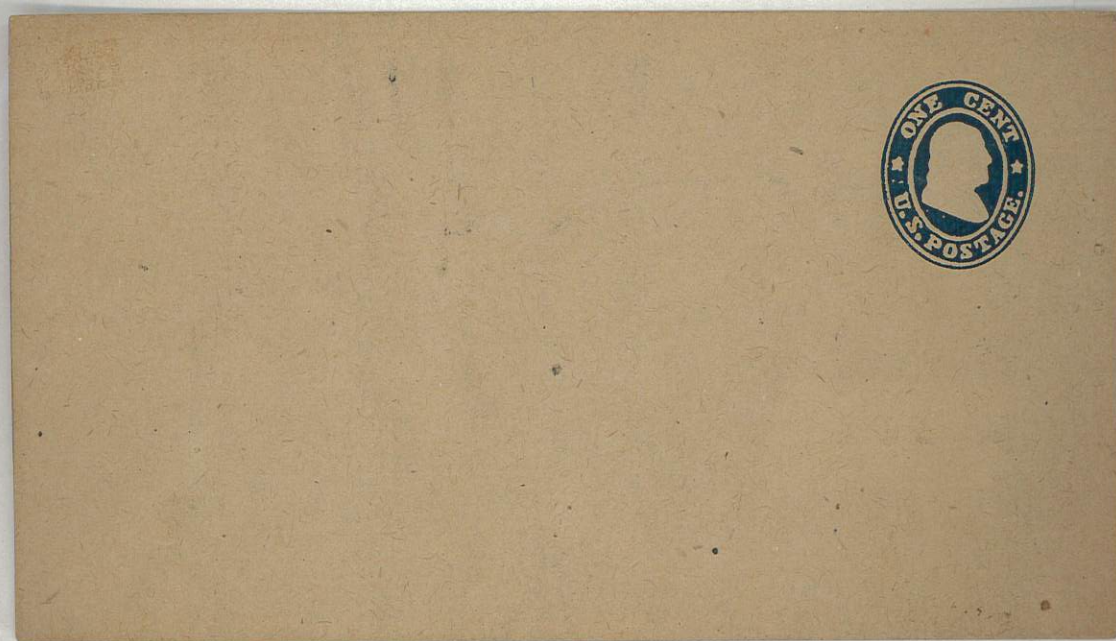
U18B - U25

Franklin

1860-61
Die 1



W21 Entire

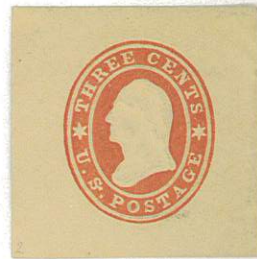
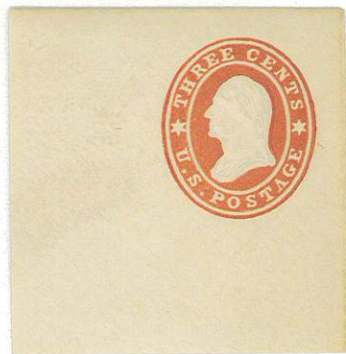


United States Envelope Cut Squares

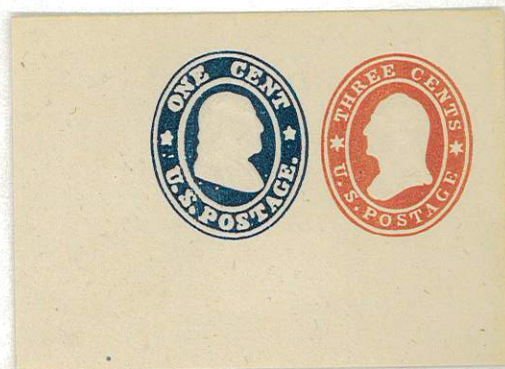
U26 - U29

Washington

1860-61



Washington and Franklin



U29 Entire



United States Envelope Cut Squares

Franklin
1860-61

Die 1

U19 Entire



Washington

U30 - U33



United States Envelope Cut Squares

U34 - U39

Washington

1861



U40 - 45

United States Envelope Cut Squares

Washington

1861



U46 - U49

United States Envelope Cut Squares

Jackson
1864-64

Die 1



W47 Entire

U50 - W53

United States Envelope Cut Squares

Jackson
1863-64

Die 3



U52 Entire

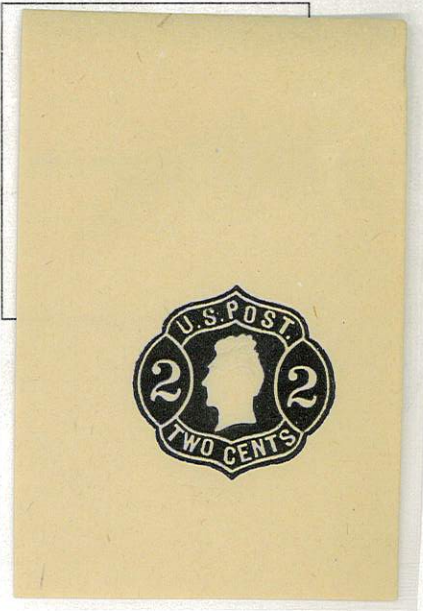
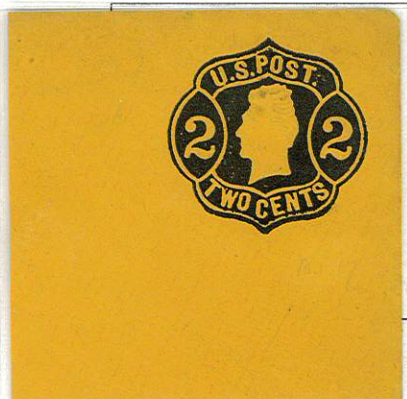
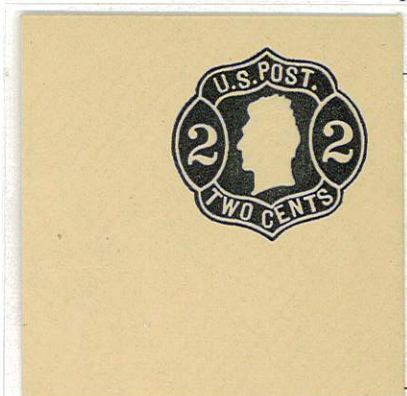
United States Envelope Cut Squares

U54 - W57

Jackson

1863-64

Die 4



U58 - U65

United States Envelope Cut Squares

Washington
1864-65



U66 - U73

United States Envelope Cut Squares

Washington

1864-65



United States Envelope Cut Squares

U74 - U81

Franklin

1870-71



W77 Entire

Jackson



United States Envelope Cut Squares

U82 - U87

Washington
1870-71



Lincoln



U86 Entire



W. R. WEISS, JR.
P.O. Box 5358
Bethlehem, PA 18015
(610) 691-6857

Opinion No. 6 U8925 Date 10/01/12

I have examined the enclosed United States 10¢ 1870
Olive Black on White 33X
36mm Unused Cut Square (Scott U89)

for D. Wharton

and my opinion is;
It is sound and genuine in all respects.

A photograph is attached below.



Signed

W. R. Weiss, Jr.
Member:

American Philatelic Society (Life Member)
United States Stamp Society, U.S. Philatelic Classics Society
U.S. Cancellation Club, U.S. Postal Stationary Society

Established 1972



The Philatelic Foundation

70 West 40th Street • 15th Floor
New York, NY 10018

EXPERT COMMITTEE

No. 0426504
6/27/05

We have examined the enclosed item, of which a photo-
graph is attached, and *described by the applicant* as follows:

Country: UNITED STATES OF AMERICA

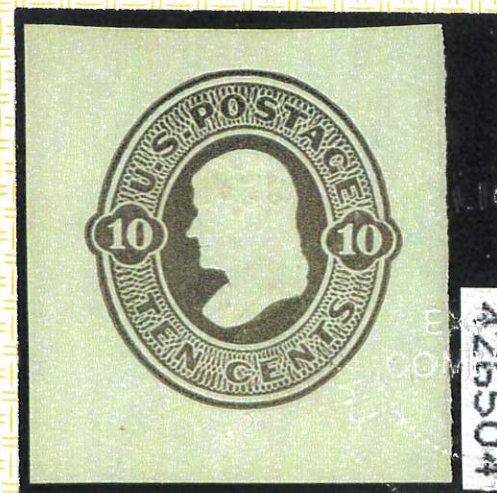
Cat. No.	Issue	Denom.	Color
<u>U90</u>	<u>1870</u>	<u>10¢</u>	<u>olive black on amber</u>

Scott's unless otherwise specified.

UNUSED
CUT SQUARE.

AND WE ARE OF THE OPINION THAT:

IT IS GENUINE * * * * *



Alan
For The Expert Committee
Chairman

Photocopies of this Certificate are not valid.

Submitted by

MARK STUCKER

E 122755

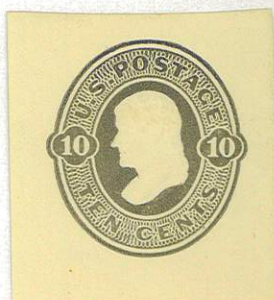
United States Envelope Cut Squares

U88 - U90

Stanton
1870-71



Jefferson



U91 - U101

United States Envelope Cut Squares

Jefferson
1870-71



Clay



Webster



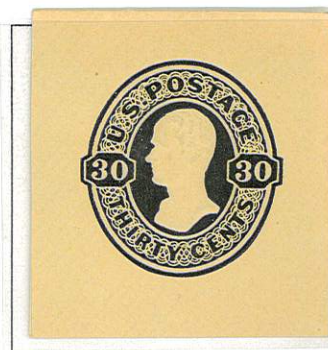
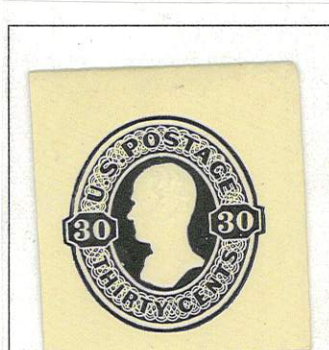
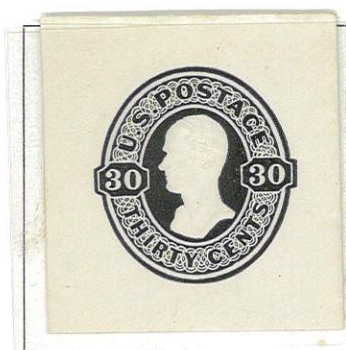
Scott



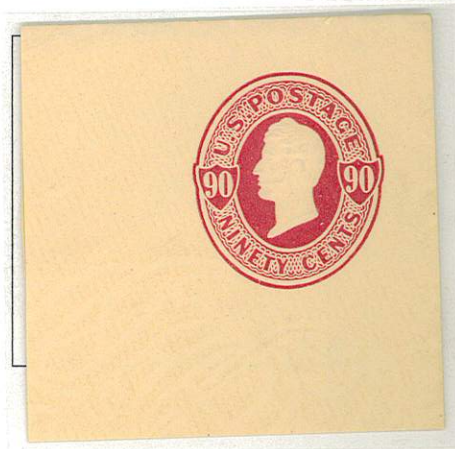
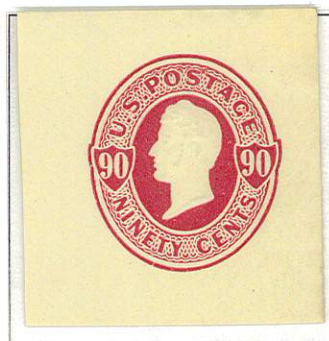
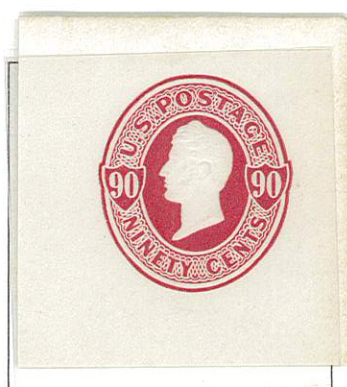
U102 - U107

United States Envelope Cut Squares

Hamilton
1870-71



Perry





The Philatelic Foundation

501 Fifth Avenue • Suite 1901
New York, NY 10017

EXPERT COMMITTEE

No. 0307674
10/09/96

We have examined the enclosed item, of which a photograph is attached, and *described by the applicant* as follows:

Country: UNITED STATES OF AMERICA

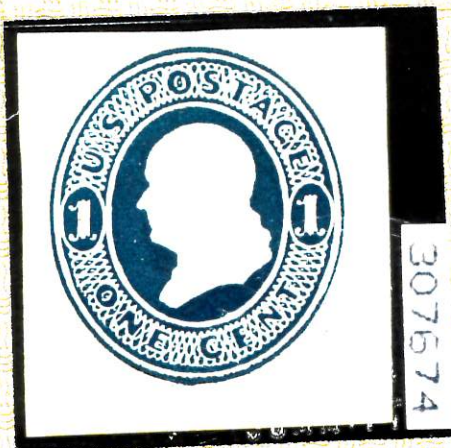
Cat. No.	Issue	Denom.	Color
U110	1874-86	1¢	dark blue on cream

Scott's unless otherwise specified.

UNUSED
CUT SQUARE.

AND WE ARE OF THE OPINION THAT:

IT IS GENUINE* * * * *



A. Remick
For The Expert Committee
Chairman

016216

Photocopies of this Certificate are not valid.

U108 - U118

United States Envelope Cut Squares

Franklin

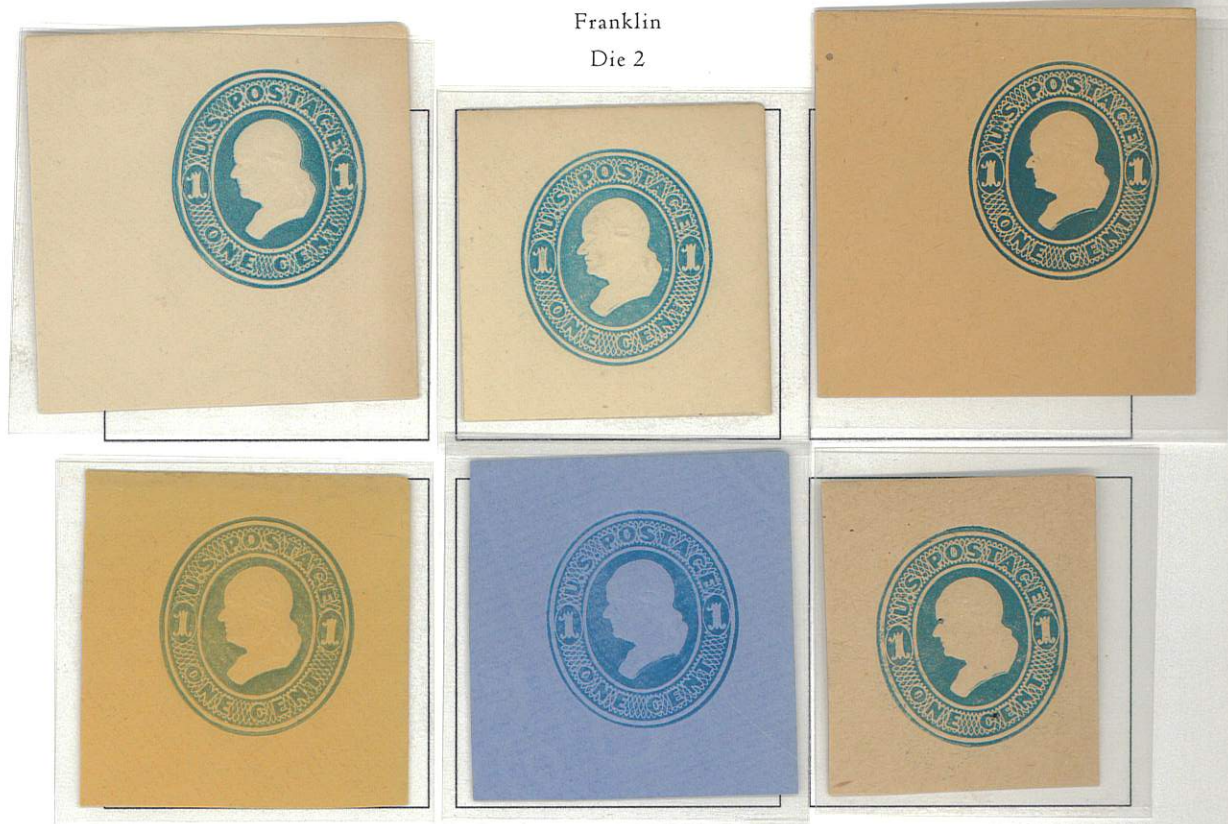
1874-86

Die 1



Franklin

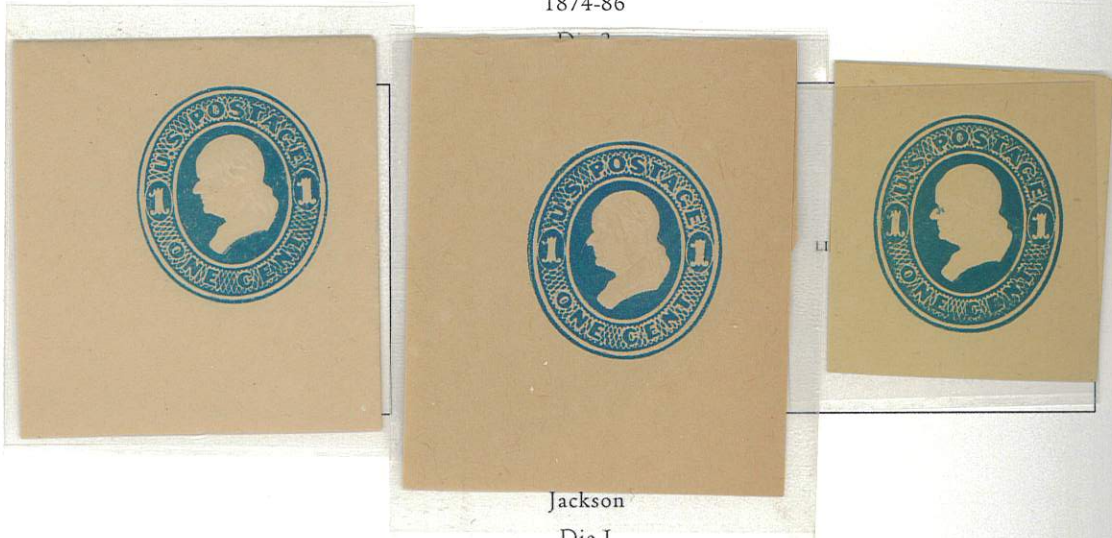
Die 2



United States Envelope Cut Squares

U119 - W127

Franklin
1874-86



Jackson
Die I



W112 Entire

United States Envelope Cut Squares



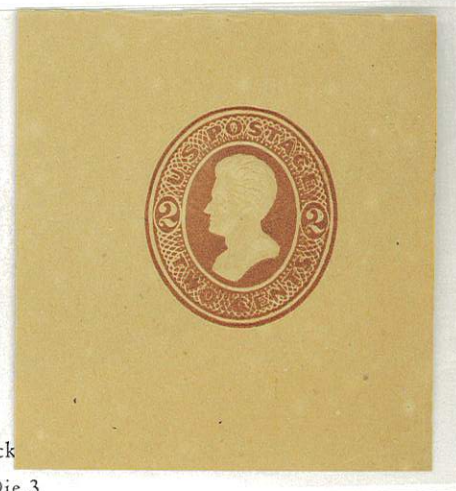
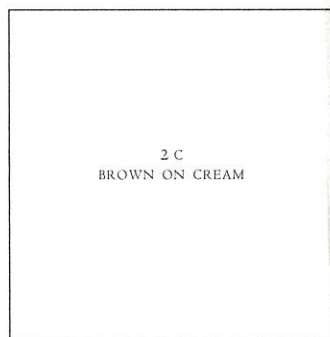
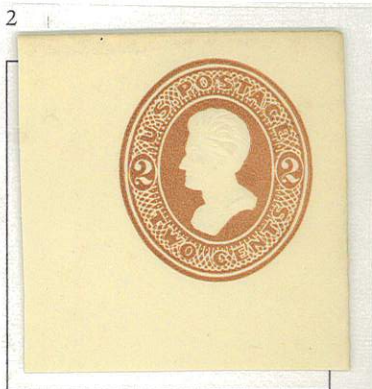
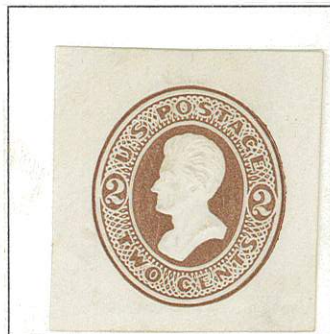
United States Envelope Cut Squares

U128 - U133A

Jackson

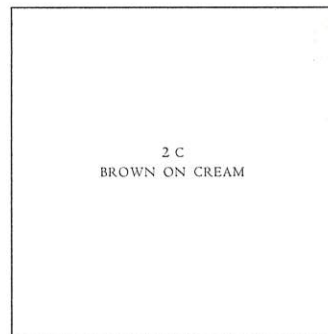
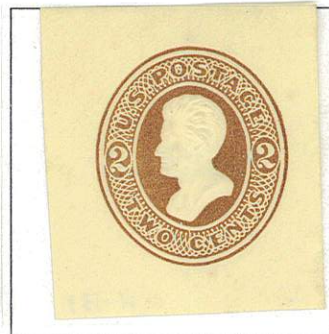
1874-86

Die 2



Jack

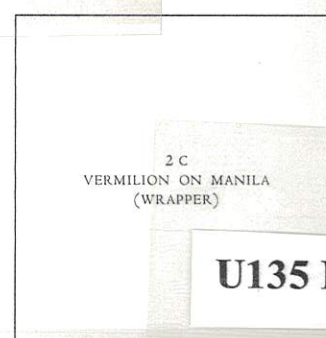
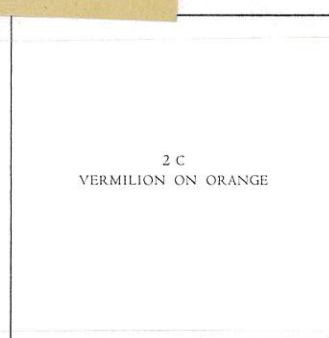
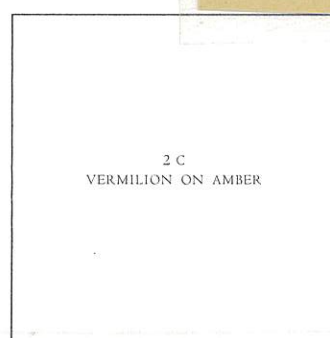
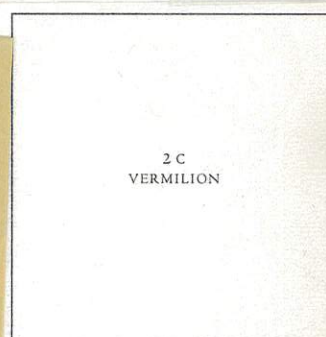
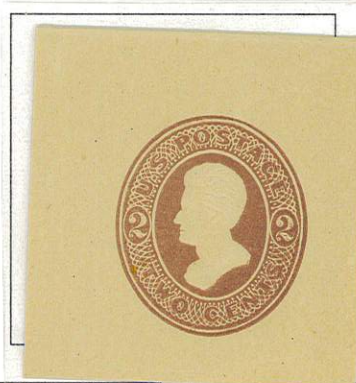
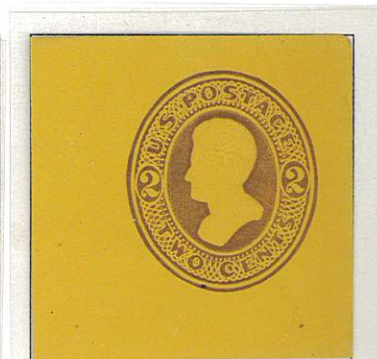
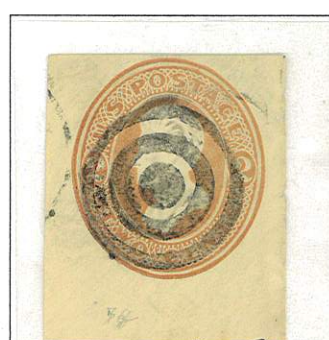
Die 3



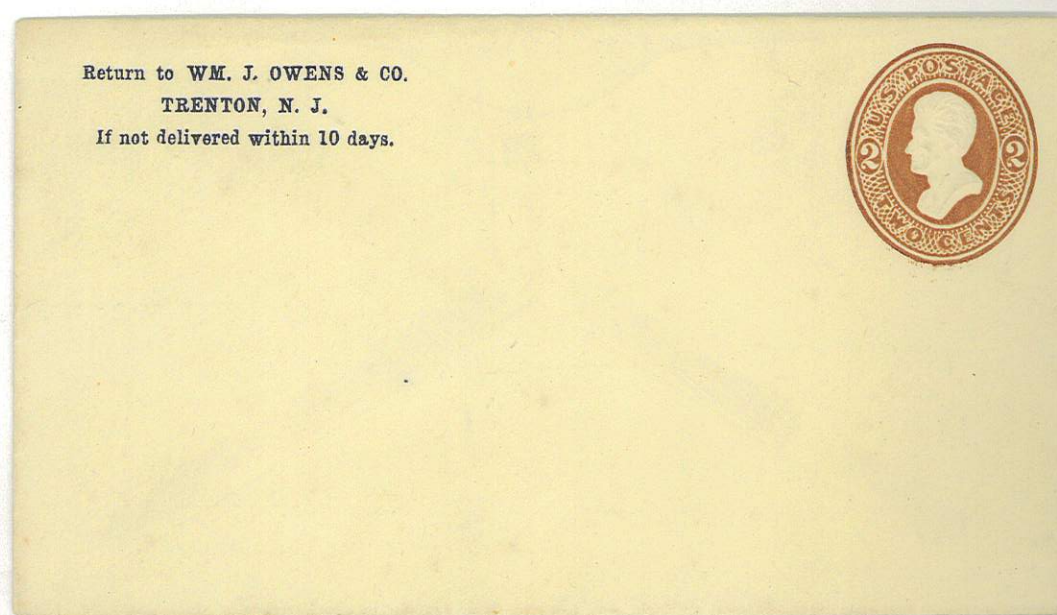
U134 - W138B

United States Envelope Cut Squares

Jackson
1874-86
Die 4



U135 Entire



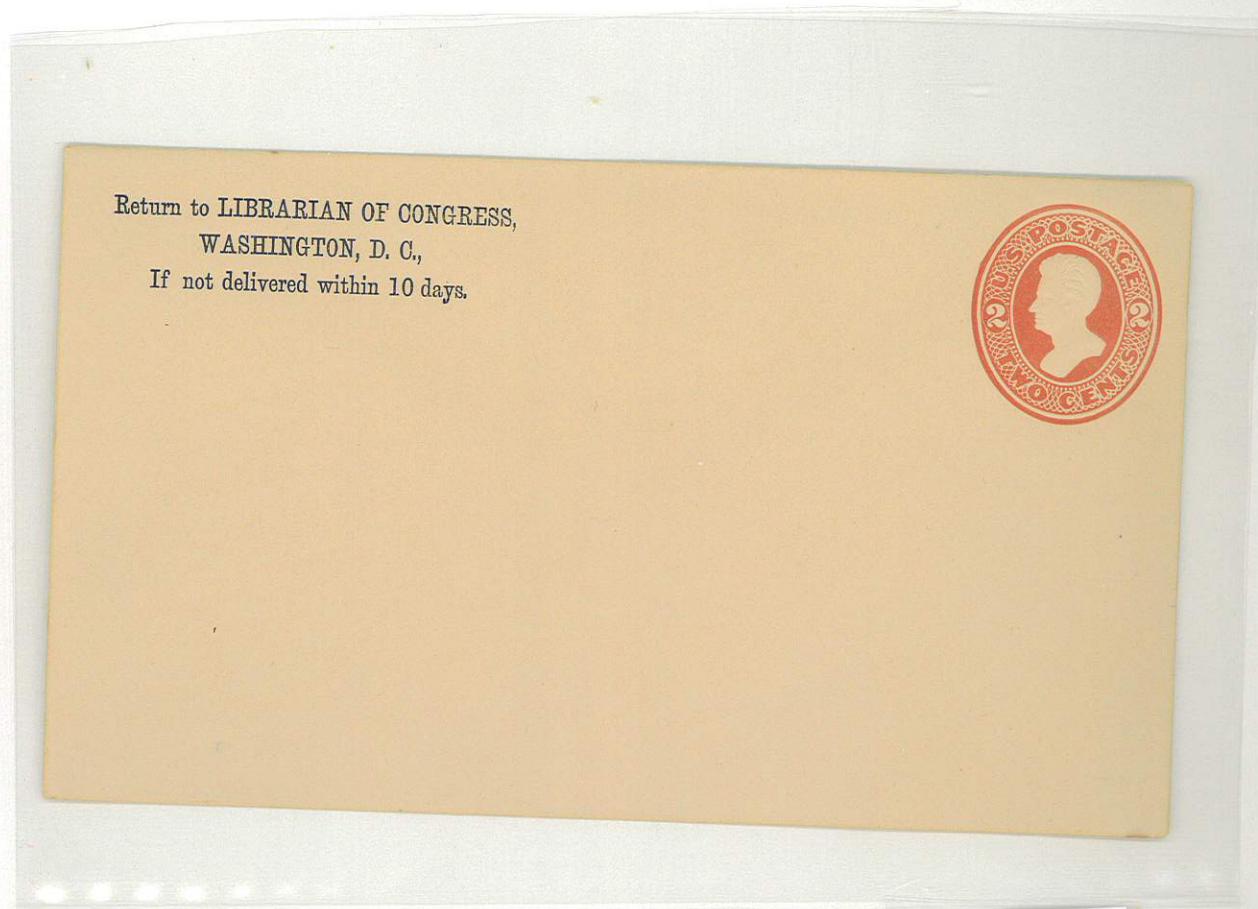
U139 - W148

United States Envelope Cut Squares

Jackson
1874-86
Die 5



United States Envelope Cut Squares



U144 Entire



W148 Entire

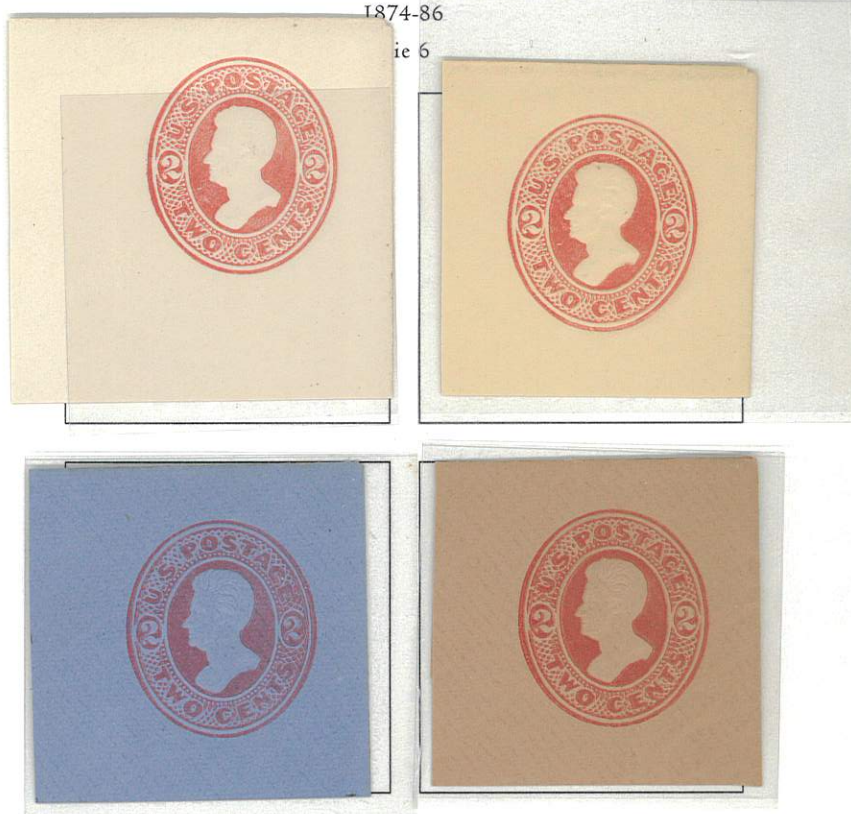
United States Envelope Cut Squares

U149 - U155

Jackson

1874-86

Die 6



Jackson

Die 7



United States Envelope Cut Squares



U153 Entire

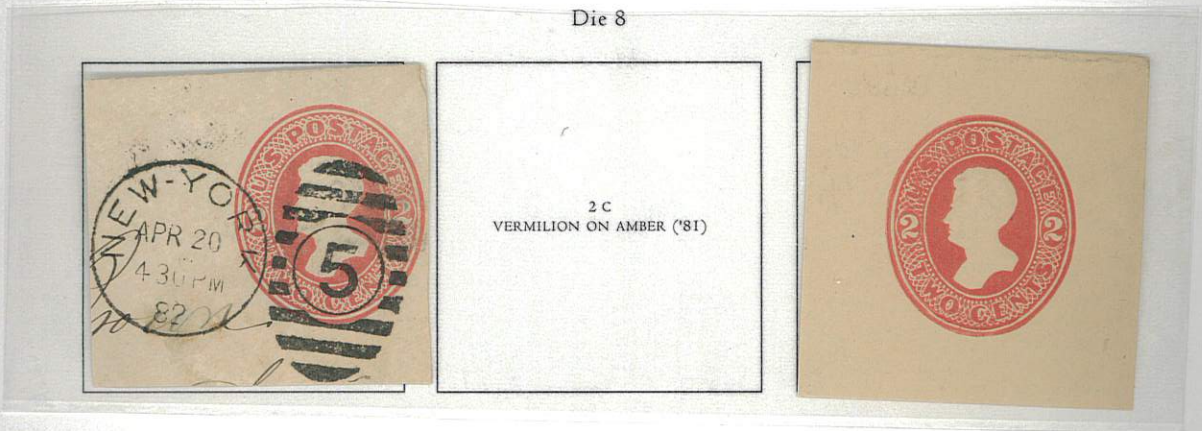


U154 Entire

United States Envelope Cut Squares

U156 - U162

Jackson
1874-86
Die 8



Washington
Die I



U161 Entire

U163 - U171

United States Envelope Cut Squares

1874-86
Washington
Die 2



Washington
Die 3



United States Envelope Cut Squares

U169 Entire



Messrs. G. R. FINLAY & CO.,

35 Magazine Street,

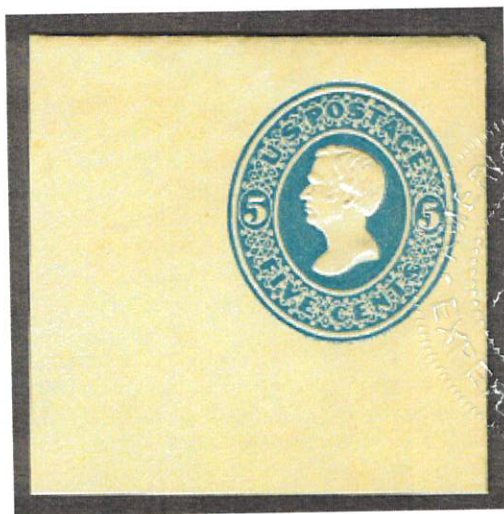
NEW ORLEANS.

American Philatelic Society

Expert Committee Report

Members of the American Philatelic Expertizing Service have examined the item submitted and it is their opinion that it is:

United States, Scott No. U177, unused cut square, full corner, genuine in all respects.



W. R. Martin
(APEX Authorized Signature)

No. **186854**

America
(Administrator Signature)

Date: **3/18/2009**

The American Philatelic Expertizing Service

A Service to Philately Since 1903

100 Match Factory Place, Bellefonte, PA 16823 USA

Phone: 814-933-3803 • Fax: 814-933-6128

Website: www.stamps.org



A cooperative service offered by the American Philatelic Society (APS)
and the American Stamp Dealers Association (ASDA).

U172 - U180

United States Envelope Cut Squares

1874-86

Taylor

Die I



Die





The Philatelic Foundation

70 West 40th Street • 15th Floor
New York, NY 10018
EXPERT COMMITTEE

No. 477210
06/10/2009

We have examined the enclosed item, of which a photograph is attached, and *described by the applicant* as follows:

Country: UNITED STATES OF AMERICA

Cat. No.	Issue	Denom.	Color
U185	1874	7¢	vermilion on white

Scott's unless otherwise specified.

UNUSED, FULL CORNER.

AND WE ARE OF THE OPINION THAT:

IT IS NOT SCOTT U185, RATHER IT IS A SCOTT U186, VERMILION ON AMBER.



477210

F 198442

For The Expert Committee
Chairman

Photocopies of this Certificate are not valid.

Submitted by

TIMOTHY A. POUDRIER



The Philatelic Foundation

70 West 40th Street • 15th Floor
New York, NY 10018
EXPERT COMMITTEE

No. 0423598
5/11/05

We have examined the enclosed item, of which a photograph is attached, and *described by the applicant* as follows:

Country: UNITED STATES OF AMERICA

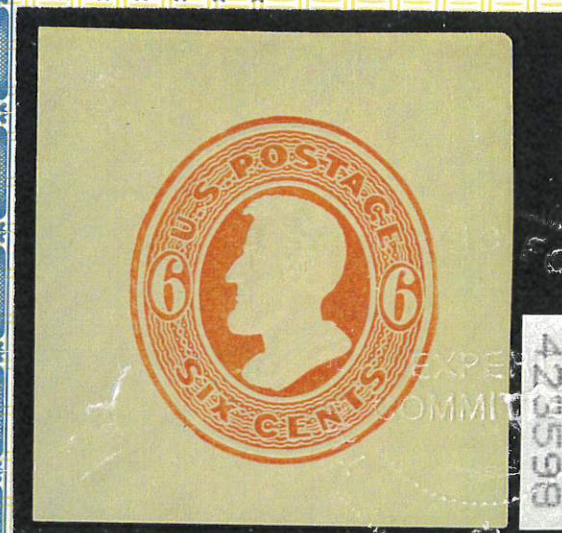
Cat. No.	Issue	Denom.	Color
U183	1874	6¢	red on cream

Scott's unless otherwise specified.

UNUSED
CUT SQUARE.

AND WE ARE OF THE OPINION THAT:

IT IS A GENUINE SCOTT U183a, VERMILION ON CREAM.



423598

F 120570

For The Expert Committee
Chairman

Photocopies of this Certificate are not valid.

Submitted by

RICHMOND H. SMITH

U181 - U188

United States Envelope Cut Squares

1874-86

Lincoln



Stanton



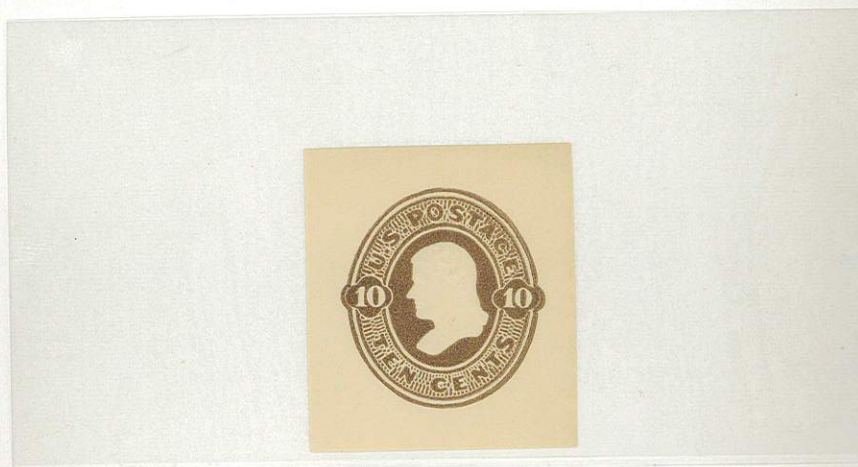
Jefferson

Die 1



United States Envelope Cut Squares

U188 Entire



U190a; U192a



S. PINCHOT AND SON

S. PINCHOT, *Expert*
DANIEL N. PINCHOT, *Director*
ENGLEWOOD CLIFFS N.J. 07632

No. 23049

1 (201) 567-6949
1 (201) 567-3383

Date OCT. - 7 1986



CERTIFICATE OF EXPERTIZATION

I have examined the enclosed U.S.#U199 15c Cut Square

UNUSED.

of which a photograph is attached and I am of the opinion

It Is Genuine.



S. Pinchot
S. Pinchot, *Expert*

Former Official Senior Consultant to the Philatelic Foundation (Retired).

The above is our opinion and not a guarantee. We cannot be held financially responsible in the event of an error. Unless specifically mentioned we do not attest to the quality or value of items submitted.

*Member: Collectors Club of N.Y., A.P.S., ASDA, IFSDA,
and Other Leading Philatelic Societies Throughout the World.*

W. R. WEISS, JR.
P.O. Box 5358
Bethlehem, PA 18015
(610) 691-6857

Opinion No. 5 U19525 Date 02/19/13

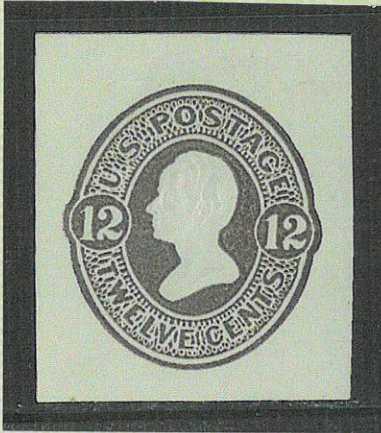
I have examined the enclosed United States 12¢ 1874-86
Unused 33x37mm Cut Sq.
On White (Scott U195)

for D. Wharton

and my opinion is; It is genuine, tiny brown spot at bottom edge,
otherwise sound.

A photograph is attached below.

W. R. Weiss, Jr.



Signed _____

Member:
American Philatelic Society (Life Member)
United States Stamp Society, U.S. Philatelic Classics Society
U.S. Cancellation Club, U.S. Postal Stationary Society

Established 1972

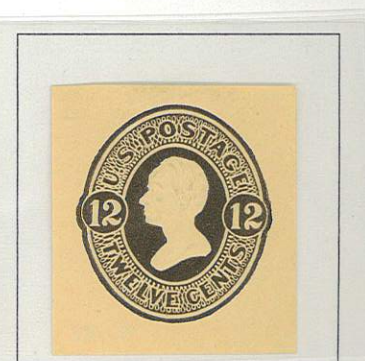
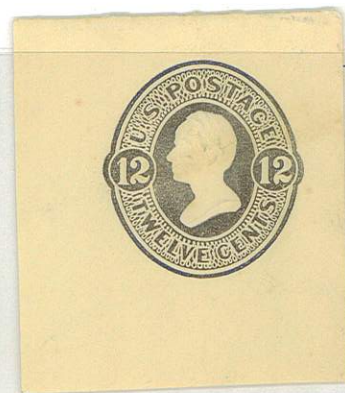
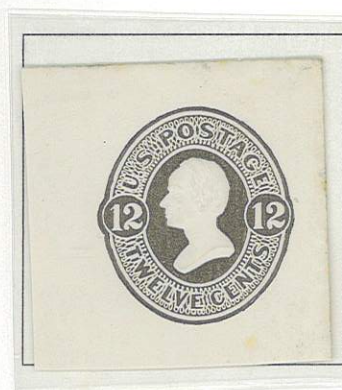
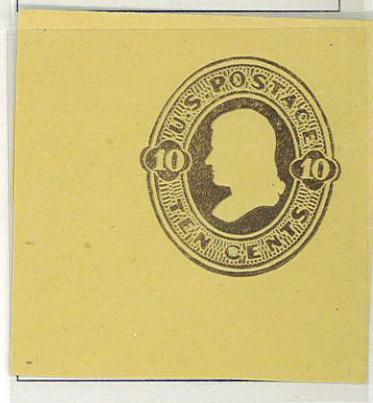
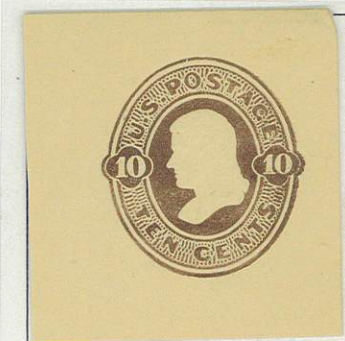
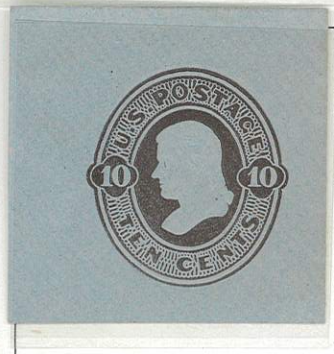
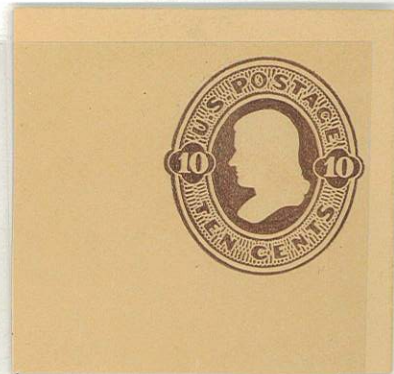
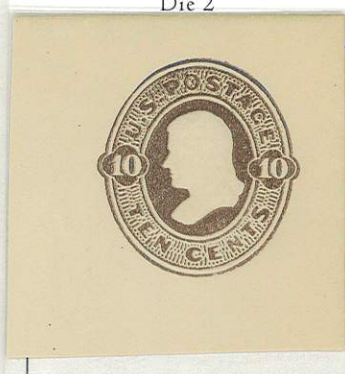
U189 - U200

United States Envelope Cut Squares

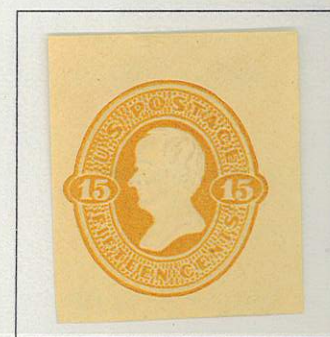
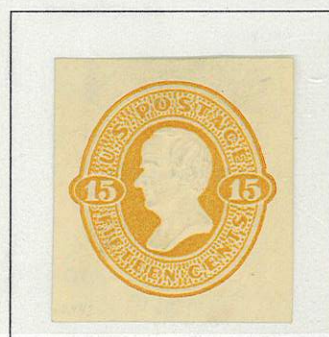
1874-86

Jefferson

Die 2



Webster



United States Envelope Cut Squares

1874-86
Scott



Ilton



PALO

Professional STAMP EXPERTIZING

PSE#23947
CERTIFICATE NO.

One Datan Center, Ste. 1149 • 9100 S. Dadeland Blvd., Miami, FL 33156

CAT # ISSUE DENOM COLOR

US#U206 1875 30 Cent Black & Cream

PROFESSIONAL has examined this submission and is of the opinion that:
"it is genuine unused, full corner cut square".

The opinions rendered by PROFESSIONAL are based upon the best judgment and expertise of highly specialized philatelic consultants using current information available to them. PROFESSIONAL's opinions do not constitute a guarantee that an item is genuine or that others may reach a different conclusion as to description. No warranties are therefore expressed or implied in PROFESSIONAL's opinions. The physical condition of a stamp may change with time through improper handling, storage or alteration, therefore, the opinion given here may not apply beyond the date of this certificate. Xeroxes or copies of this certificate are INVALID.

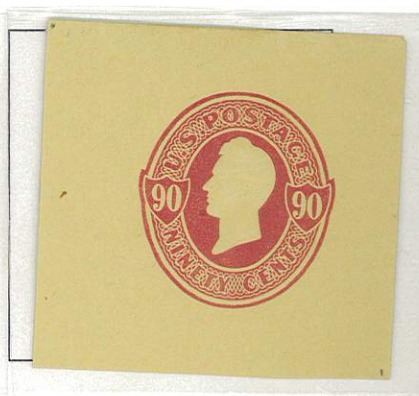
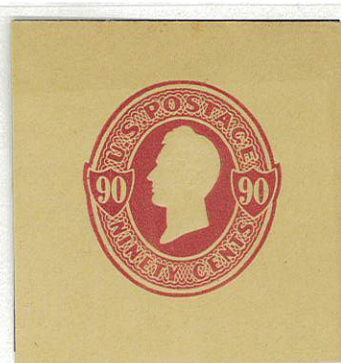
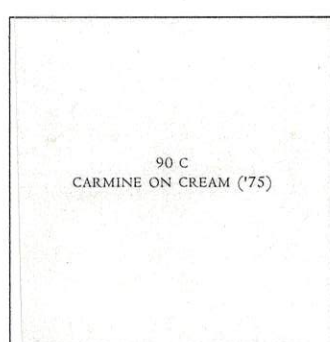
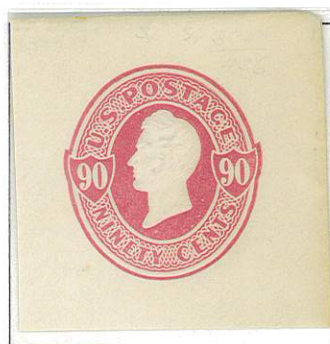
R. Champagne EXPERTS: 1 W. Maisel 2 R. Shoemaker 3
Chairman, Board of Consultants

U211 - U217

United States Envelope Cut Squares

1874-86

Perry



U218 - U221

United States Envelope Cut Squares

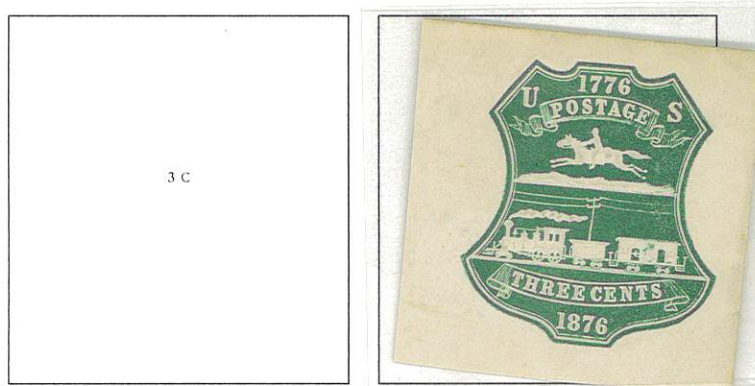
United States Centennial Issue

1876

Die 1 - Single Line Under "POSTAGE"



Die 2 - Double Line Under "POSTAGE"



U222 - U230

United States Envelope Cut Squares

Garfield
1882



Washing
1883



U231 - U239

United States Envelope Cut Squares

Washington

Four Wavy Lines in Oval Fine and Clear

1883



Wavy Lines Thick and Blurred

1884





The Philatelic Foundation

70 West 40th Street • 15th Floor
New York, NY 10018
EXPERT COMMITTEE

No. 473775

02/20/2009

We have examined the enclosed item, of which a photograph is attached, and *described by the applicant* as follows:

Country: UNITED STATES OF AMERICA

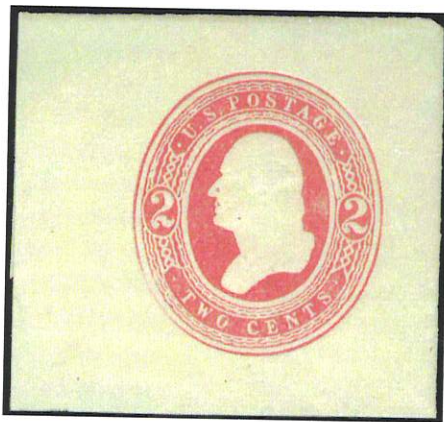
<u>Cat. No.</u>	<u>Issue</u>	<u>Denom.</u>	<u>Color</u>
U241	1884	2¢	red on amber

Scott's unless otherwise specified.

UNUSED, FULL CORNER.

AND WE ARE OF THE OPINION THAT:

IT IS GENUINE*****



473775

F 201864

For The Expert Committee
Chairman

Photocopies of this Certificate are not valid.

Submitted by

MARK MORROW

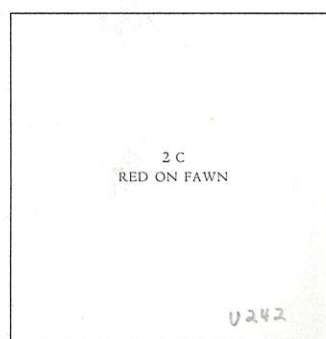
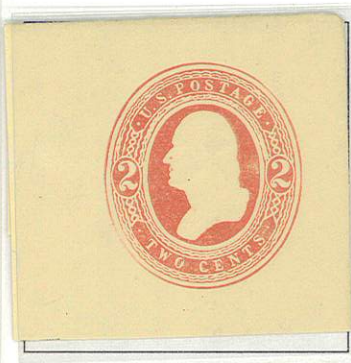
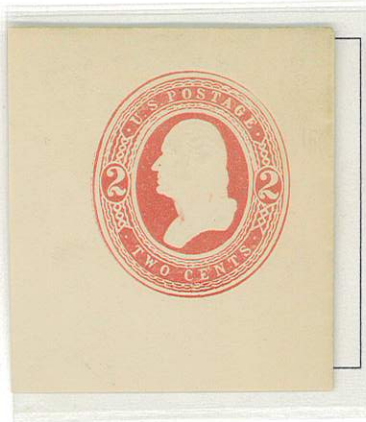
United States Envelope Cut Squares

U240 - U246

Washington

Three and One-Half Links Over Left "2"

1884



U242

Washington

Two Links Below Right "2"



U244 Entire





The Philatelic Foundation

501 Fifth Avenue • Suite 1901
New York, NY 10017

EXPERT COMMITTEE

No. 0378498
12/05/01

We have examined the enclosed item, of which a photograph is attached, and *described by the applicant* as follows:

Country: UNITED STATES OF AMERICA

Cat. No.	Issue	Denom.	Color
U248	1884	2¢	red on amber

Scott's unless otherwise specified.

USED
CUT SQUARE, DUPLEX CANCEL.

AND WE ARE OF THE OPINION THAT:

IT IS GENUINE WITH A FEW SMALL TONED SPOTS AT TOP
RIGHT. * * * * *



[Signature]
For The Expert Committee
Chairman

D 069872

Photocopies of this Certificate are not valid.

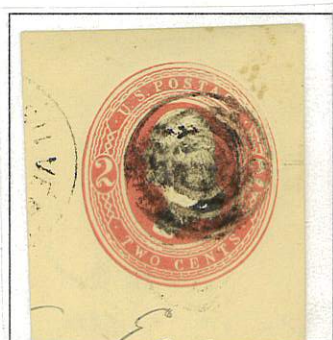
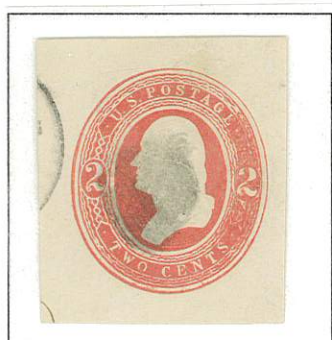
Submitted by

SHREVES PHILATELIC GAL.

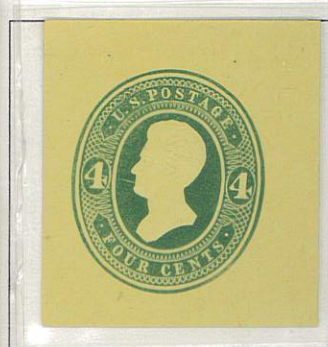
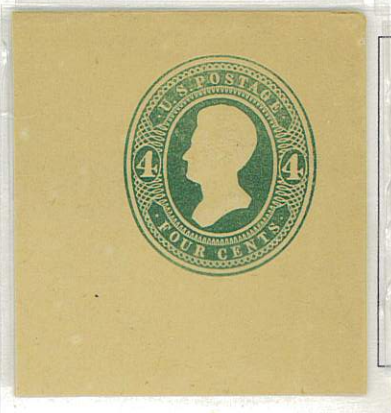
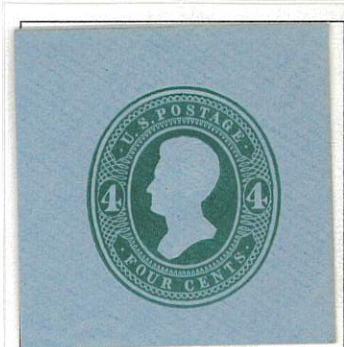
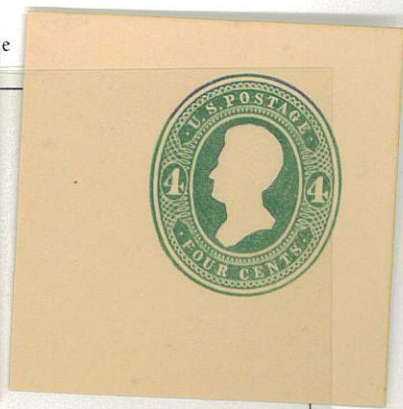
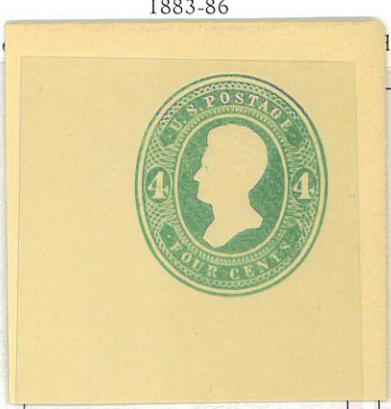
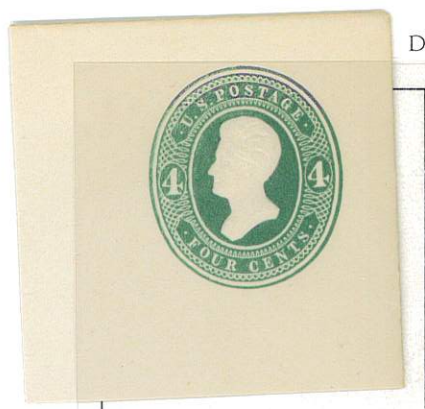
U247 - U255

United States Envelope Cut Squares

Washington
Round "O" in "Two"
1884



Jackson
1883-86



U256 - W264

United States Envelope Cut Squares

Jefferson

1883 - 86

left is 3 1/4mm Wide



Washington

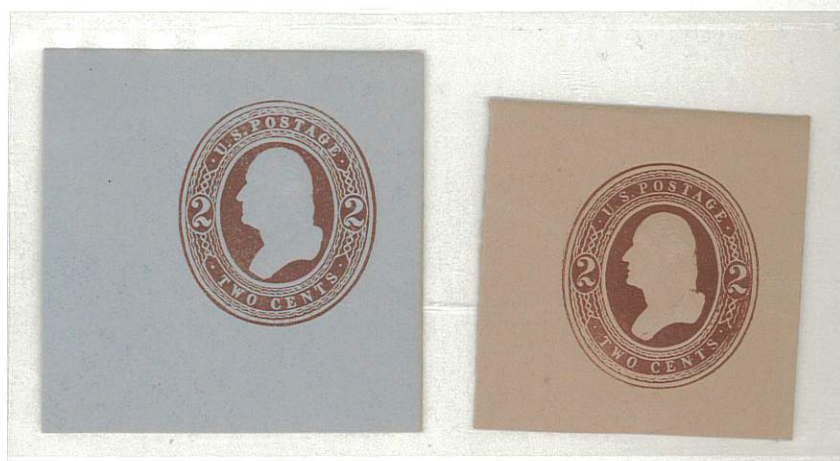
188



U265 - W269

United States Envelope Cut Squares

Washington
Retouched Die
1884



W269 Entire

U270 - U276

United States Envelope Cut Squares

Washington
Two Links Below Right "2"



U271 Entire

Washington
Round "O" in "Two"
1884



U277 - W287

United States Envelope Cut Squares

Washington
1884-86
Die I

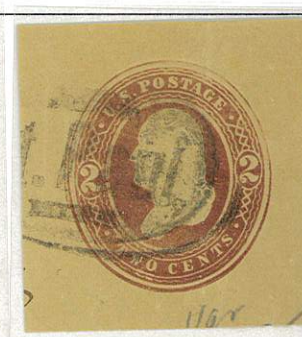
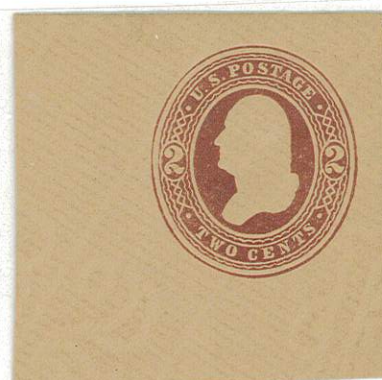
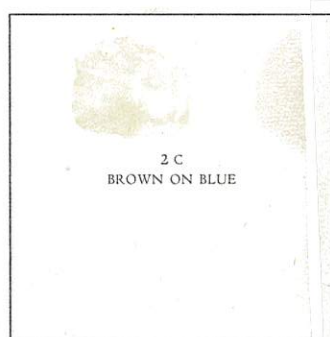
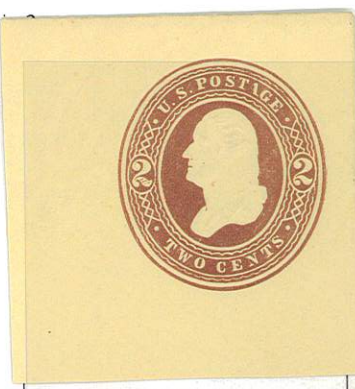
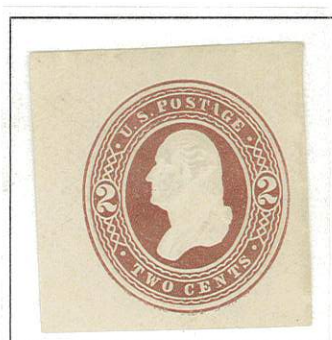


U288 - W292

United States Envelope Cut Squares

Washington
1884 - 86

D



W292 Entire

U293

United States Envelope Cut Squares

General U. S. Grant
Printed by American Bank Note Company
Issued August 18, 1886
Withdrawn June 30, 1894



U294 - U299

United States Envelope Cut Squares

Franklin
1887-94



United States Envelope Cut Squares

Franklin
1887-94

U300 - 04



U304 Entire



U305 - U310

United States Envelope Cut Squares

Washington
1887 - 94
Die I



2 C
GREEN ON BLUE

2 C
GREEN ON MANILA

2 C
GREEN ON AMBER MANILA

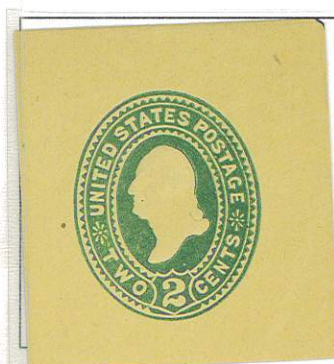
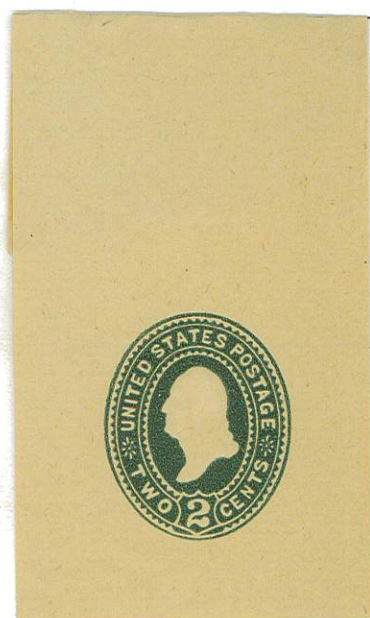
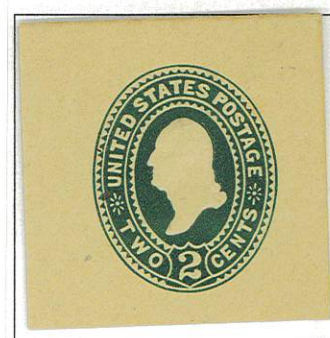
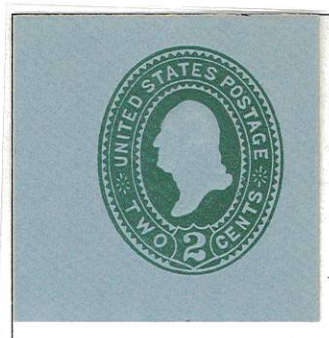
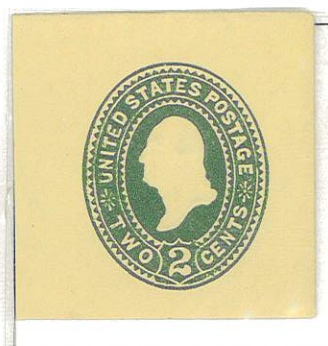
U311 - U317

United States Envelope Cut Squares

Washington

1887 - 94

Die 2





No. 00101207

8/11/2003



Professional Stamp Experts

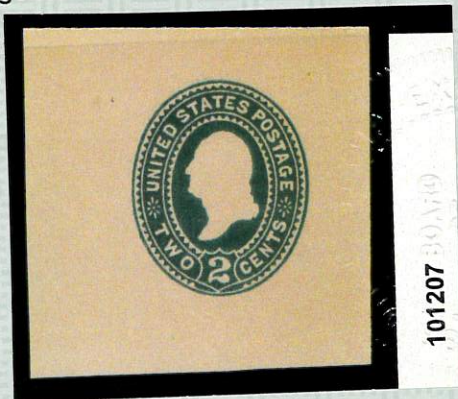
P.O. Box 6170, Newport Beach, CA 92658

Authentication Committee

We have examined the enclosed item submitted to PSE, of which the photo is attached with seal and are of the opinion that:

Cat #	Issue	Denom.	Color
US#U320	1887	2c	Green on oriental buff

"it is a genuine unused, FULL CORNER cut square."



1. K. Wolford

2. R. A. Champagne

3. R. Shoemaker


For The Expert Committee

U318 - U329

United States Envelope Cut Squares

Washington
1887 - 94



Jackson
1887 - 94





The Philatelic Foundation

70 West 40th Street • 15th Floor
New York, NY 10018
EXPERT COMMITTEE

No. 499480
10/20/2011

We have examined the enclosed item, of which a photograph is attached, and *described by the applicant* as follows:

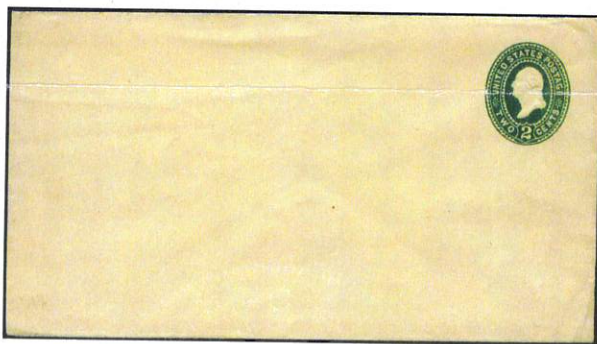
Country: UNITED STATES OF AMERICA

<u>Cat. No.</u>	<u>Issue</u>	<u>Denom.</u>	<u>Color</u>
U323	1887	2¢	green on amber manila

Scott's unless otherwise specified.

UNUSED ENTIRE.

AND WE ARE OF THE OPINION THAT:
IT IS GENUINE, WITH LIGHT CREASING. *****



499480

F 217619

Photocopies of this Certificate are not valid.

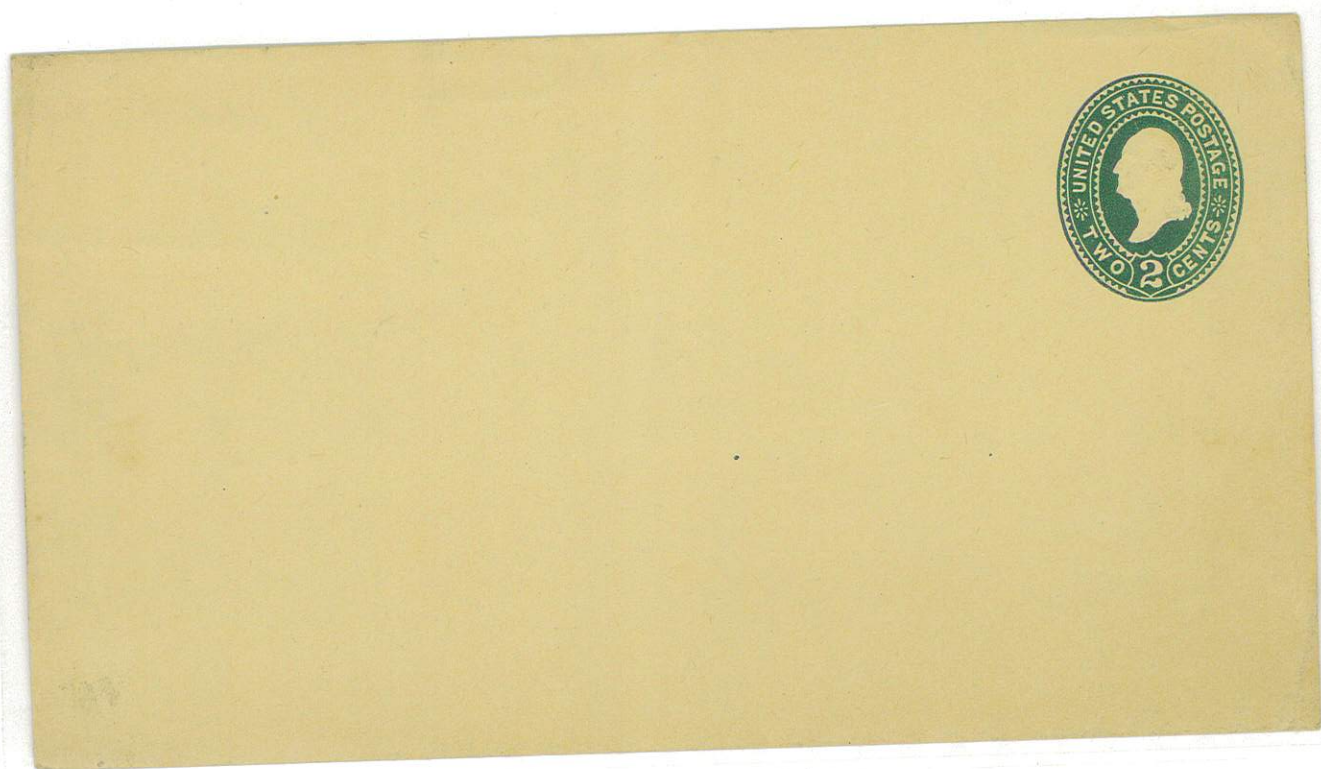
For The Expert Committee
Chairman

Submitted by

H. R. HARMER, INC.

United States Envelope Cut Squares

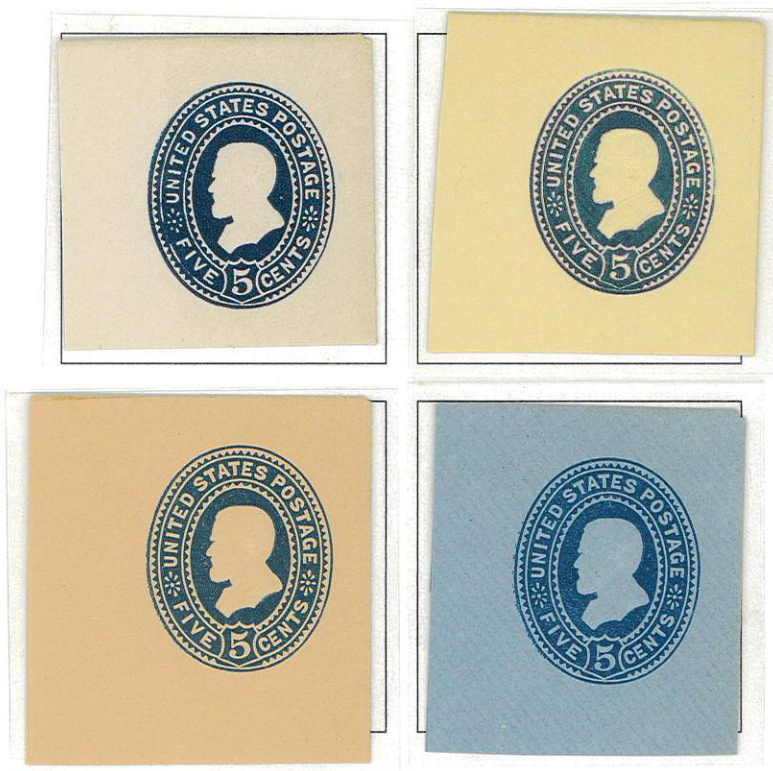
U323 Entire



U330 - U335

United States Envelope Cut Squares

Grant
1887 - 94
Die I



Die 2



U336 - U347

United States Envelope Cut Squares

Hamilton
1887 - 94



Perry
1887 - 94

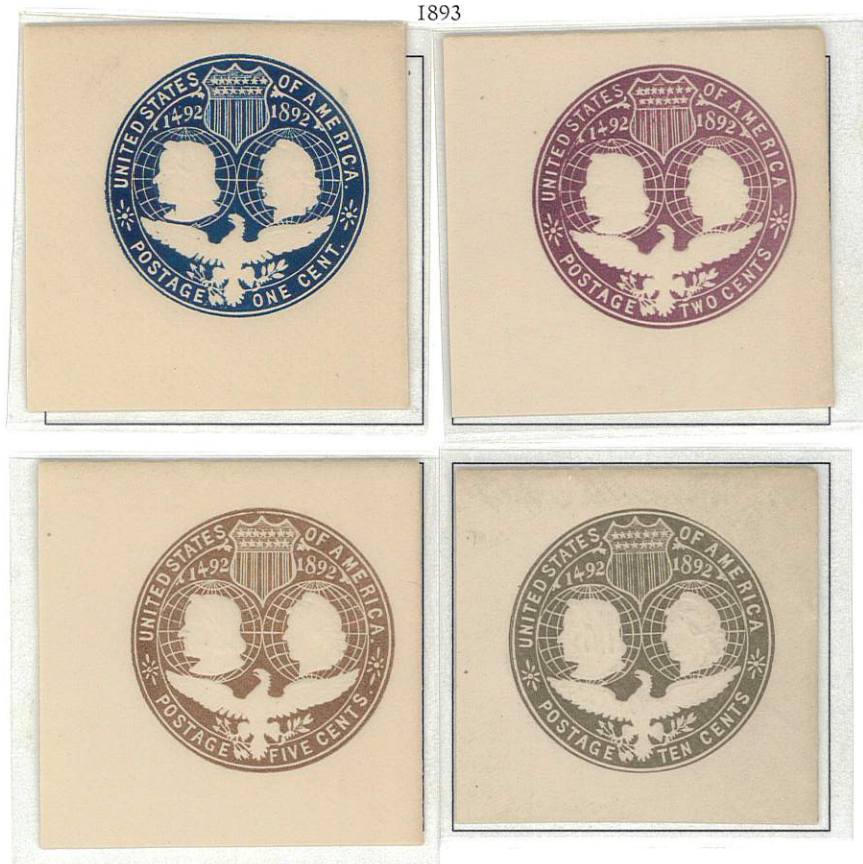


U348 - W357

United States Envelope Cut Squares

Columbian Exposition Issue

1893



Franklin

1899



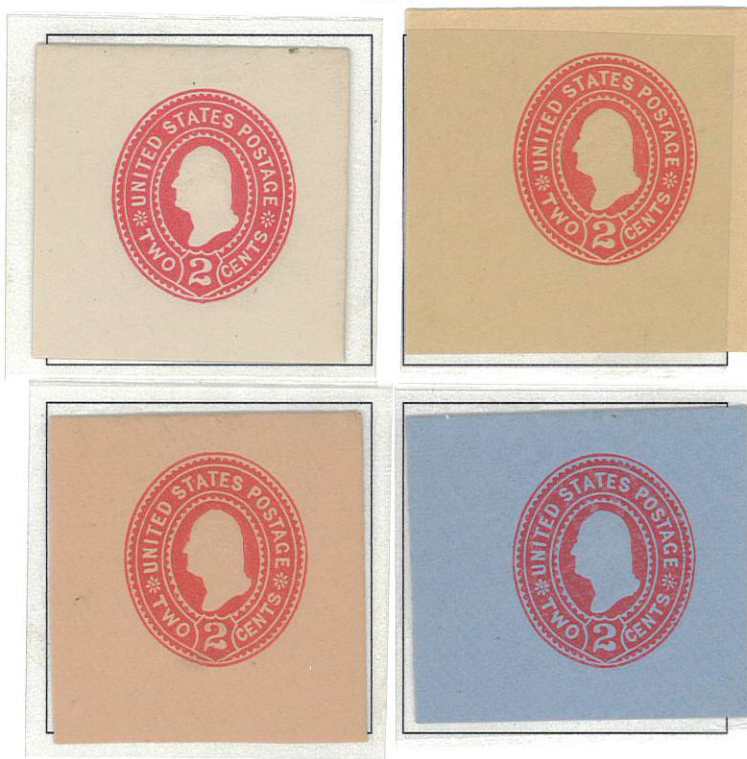
U358 - W366

United States Envelope Cut Squares

Washington

1899

Die I



Die 2



U367 - U372

United States Envelope Cut Squares

Washington

1899

Die 3



Lincoln

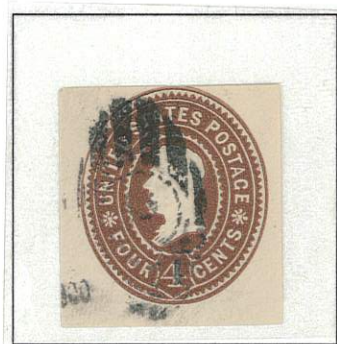
Die 1



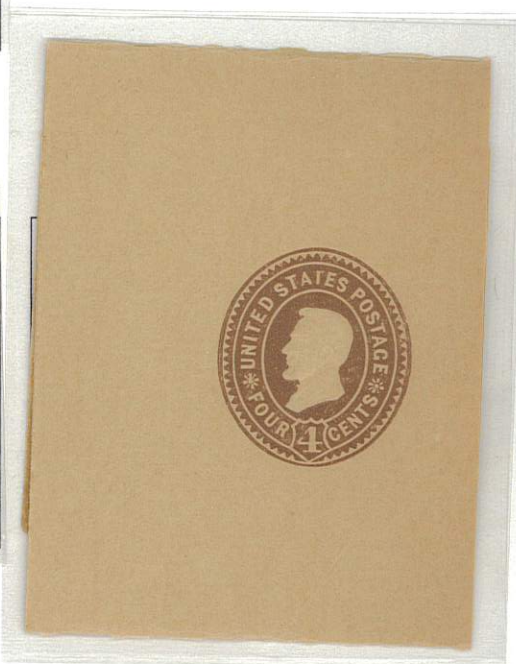
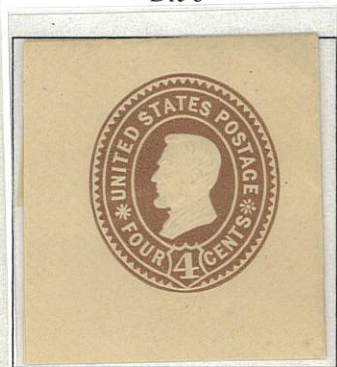
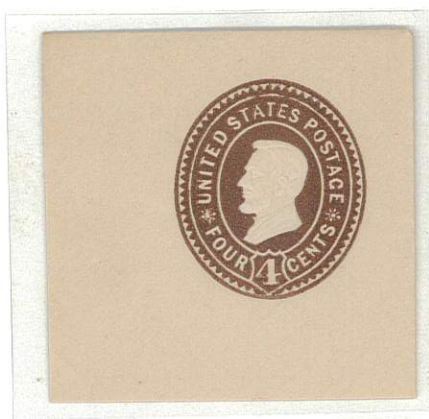
U373 - U378

United States Envelope Cut Squares

Lincoln
Die 2 - Bust broad and draped
1899



Lincoln
Die 3



Grant
1899



U379 - W384

United States Envelope Cut Squares

Franklin
1903



U385 - W392

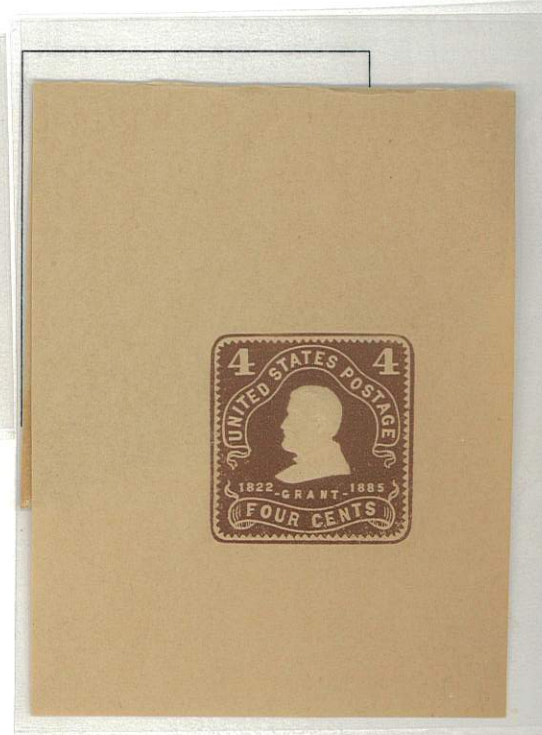
United States Envelope Cut Squares

Washington

1903



Grant

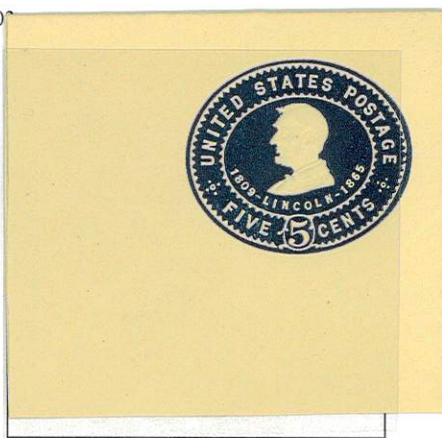


U393 - W399

United States Envelope Cut Squares

Lincoln

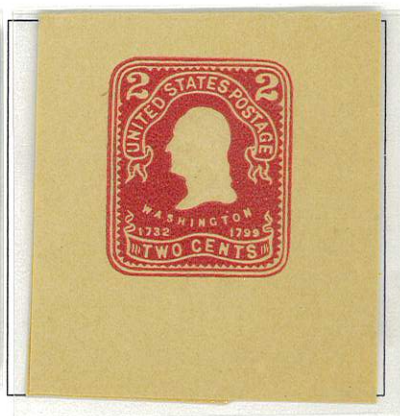
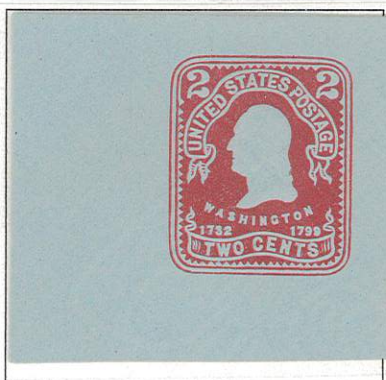
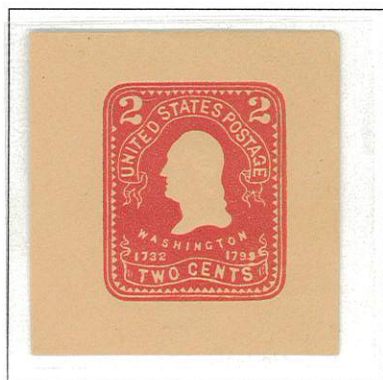
1907



Washington

Re-cut Die

1904



U400 - U405

United States Envelope Cut Squares

Franklin
1907 - 16



United States Envelope Cut Squares

U406 - W415

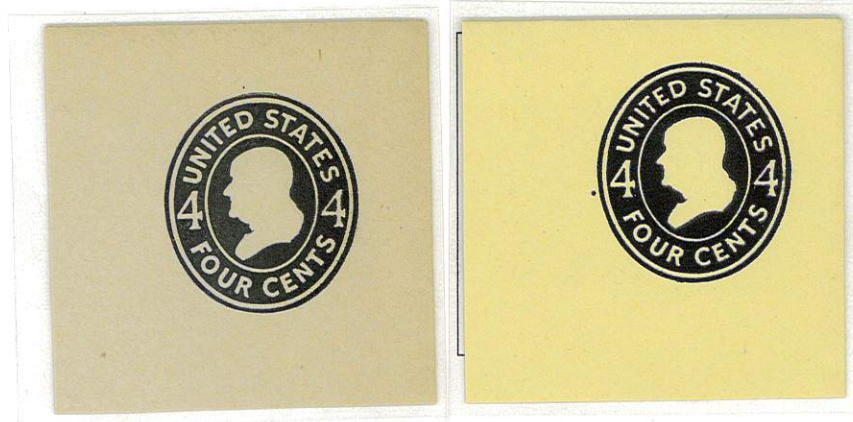
Washington
1907 - 16



U416 - U419

United States Envelope Cut Squares

Franklin
1907 - 16



Washington
1907 - 16



U420 - W428A

United States Envelope Cut Squares

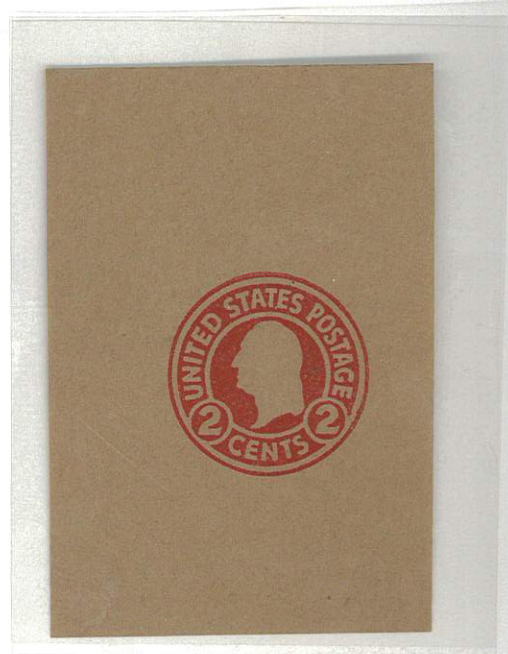
Franklin
1915 - 32



U429 - 35

United States Envelope Cut Squares

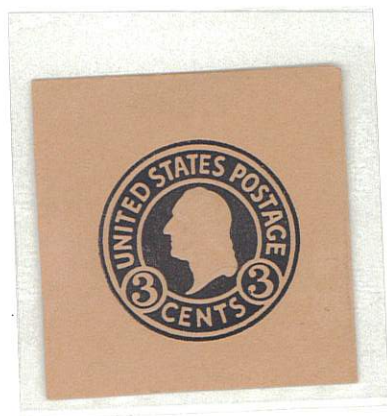
Washington
1915-32



United States Envelope Cut Squares

U436 - 39

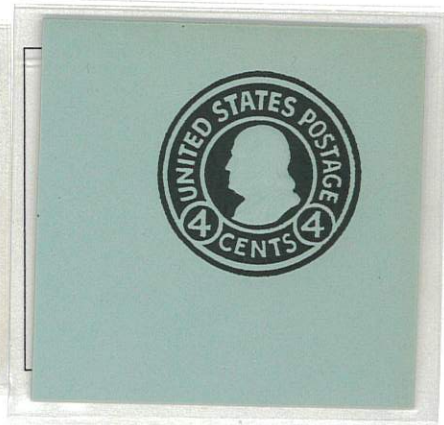
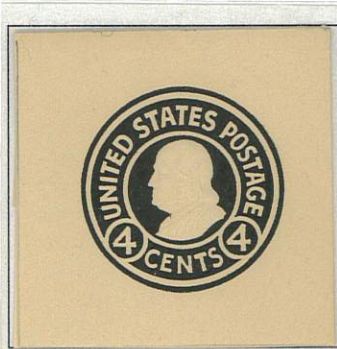
Washington
1915-32



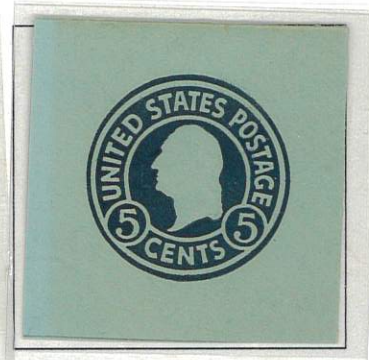
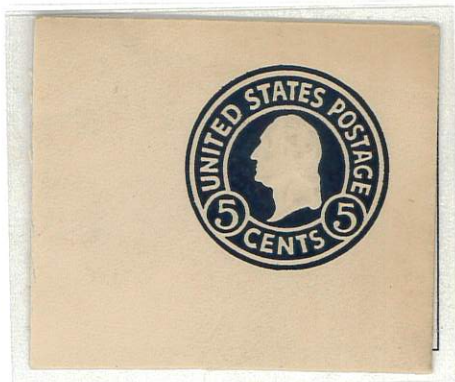
U440 - U445

United States Envelope Cut Squares

Franklin
1915 - 32



Washington
1915 - 32

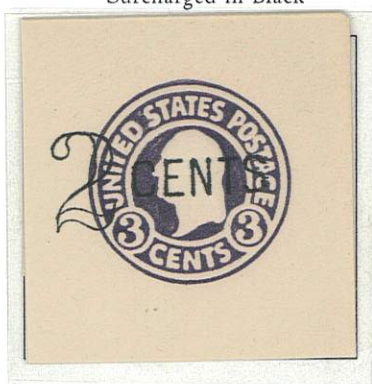


U446 - U451

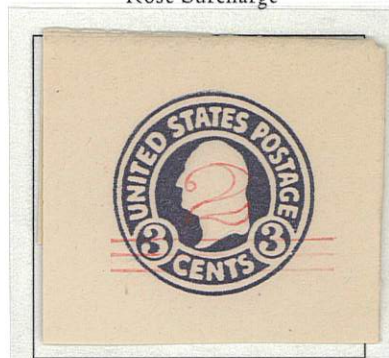
United States Envelope Cut Squares

Washington
1920 - 21

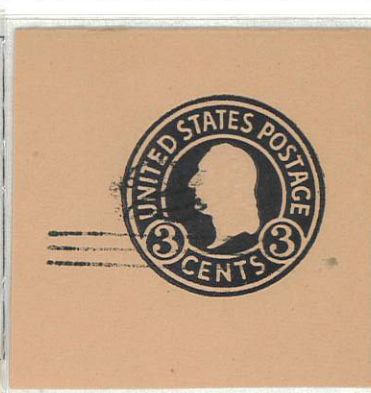
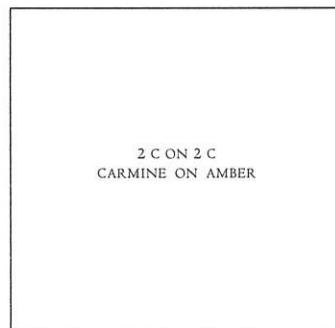
Surcharged in Black



Rose Surcharge



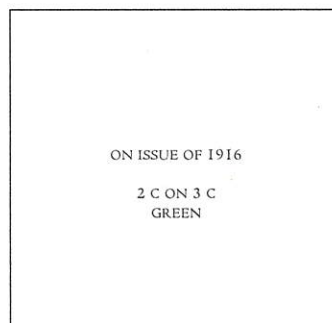
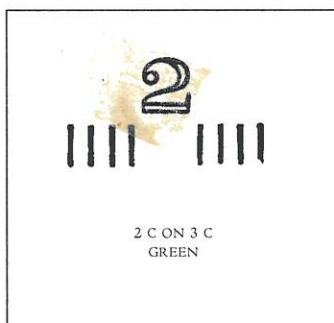
Black Surcharge



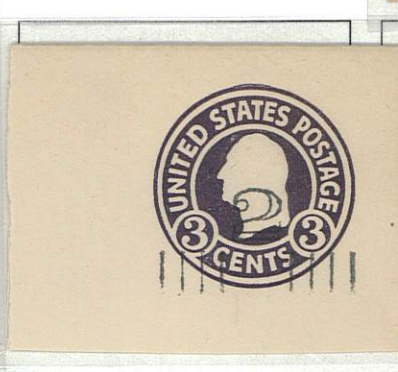
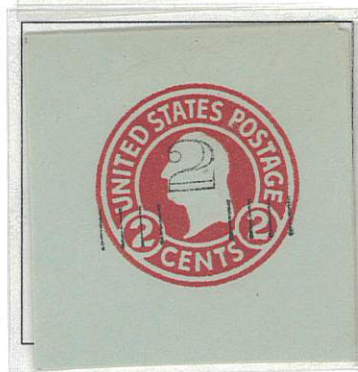
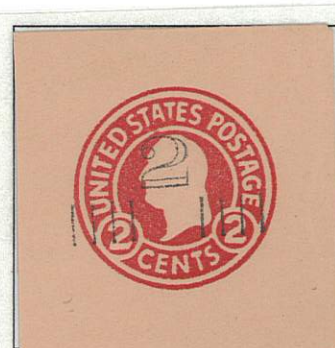
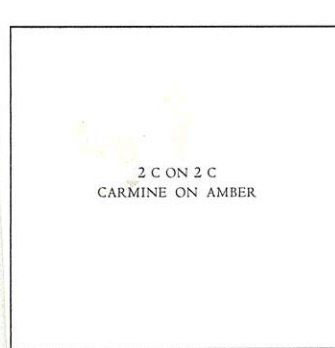
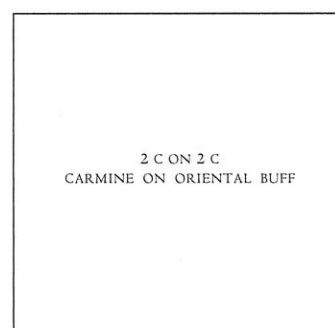
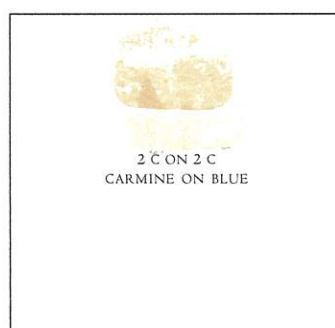
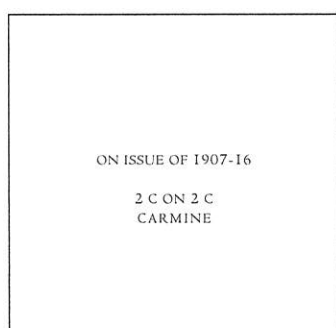
U451A - U459

United States Envelope Cut Squares

Franklin
1920 - 21



Washington



United States Envelope Cut Squares

U463A



U460 - U464

United States Envelope Cut Squares

Washington

0-21

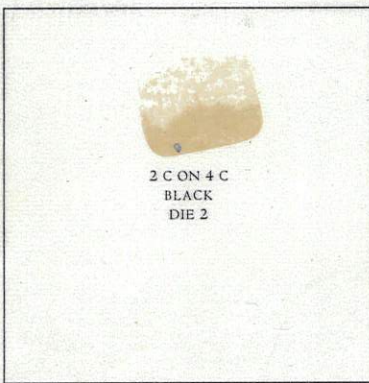


Grant



Franklin

Washington



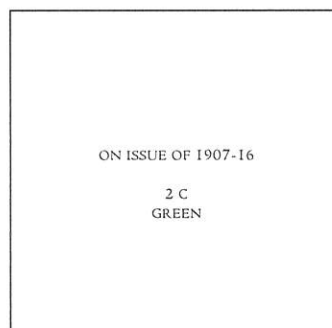
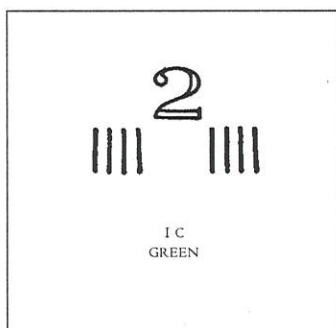
U465 - U471

United States Envelope Cut Squares

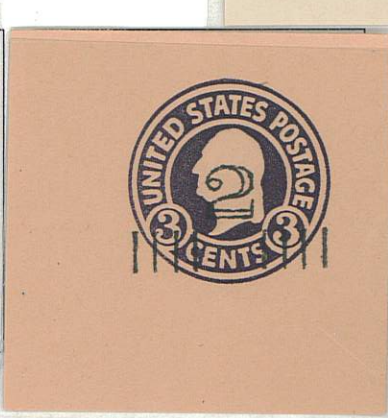
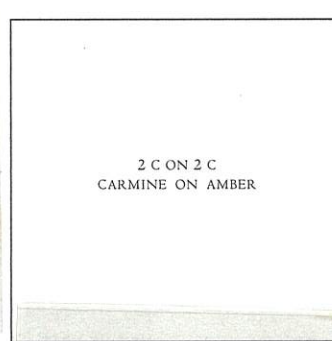
Washington
1920 - 21

Franklin

Washington



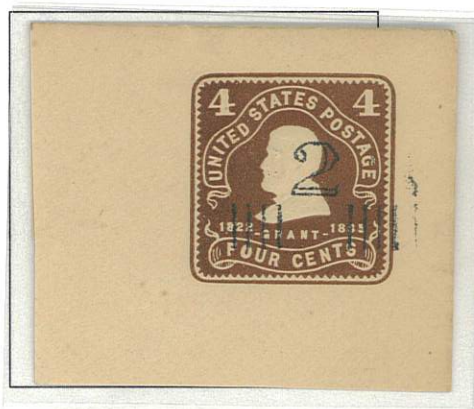
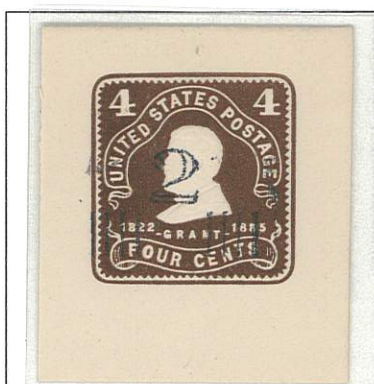
Washington



U472 - U480

United States Envelope Cut Squares

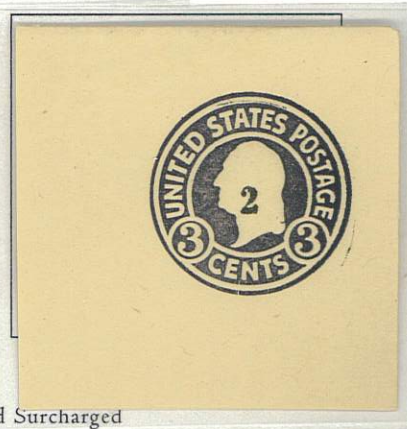
Grant
1920 - 21



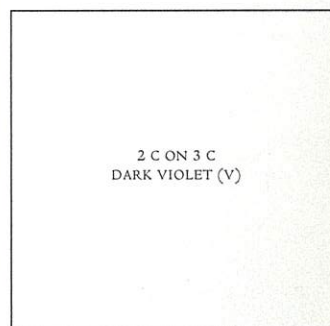
Washington
Double Surcharged



Washington
Surcharged



Handstamped Surcharged



2 C ON 3 C
DARK VIOLET (V)

U481 - W485

United States Envelope Cut Squares

Washington
Type of 1916-32 Issue
1925



U486 - U489

United States Envelope Cut Squares

Issue of 1887 Surcharged



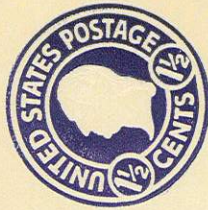
Issue of 1899 Surcharged



United States Envelope Cut Squares

U481b

1 1/2c Purple Error
1934



After 5 days, return to
MOODY'S INC.,
Box 452,
GREELEY, COLORADO.

United States Envelope Cut Squares

U490 - U494

Franklin

Issue of 1907 - 16 Surcharged

1925



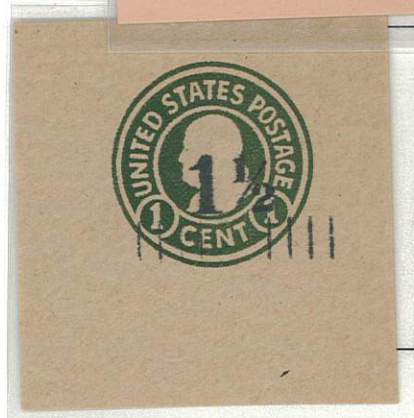
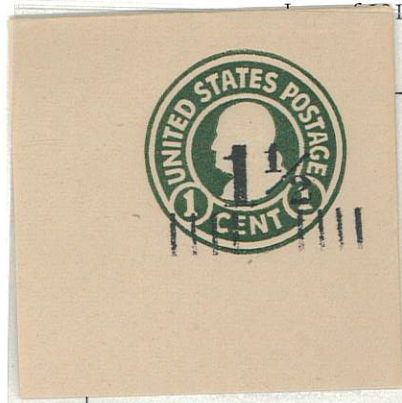
U495 - U504

United States Envelope Cut Squares

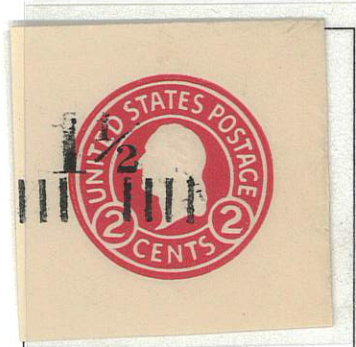
Franklin

16 - 20 Surcharged

192



Washington



United States Envelope Cut Squares

Washington
Type of 1916-20 Surcharged
1925

U503



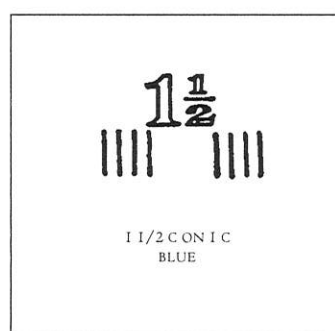
U505 - U508

United States Envelope Cut Squares

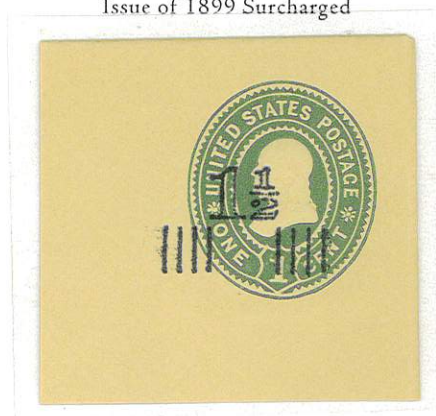
Washington
Issue of 1925 Surcharged
1925



Franklin
Issue of 1887 Surcharged
1925



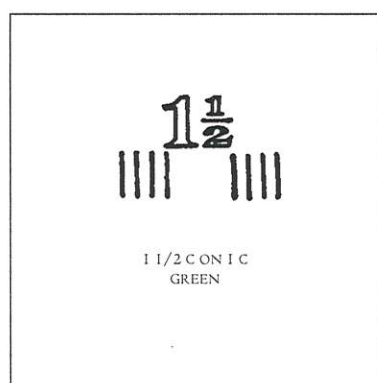
Issue of 1899 Surcharged



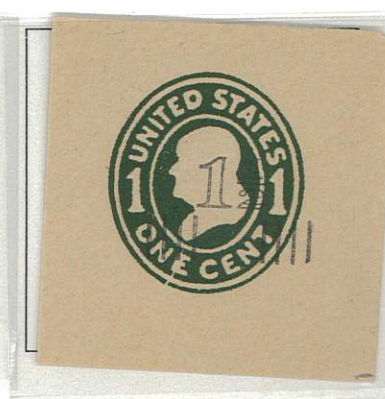
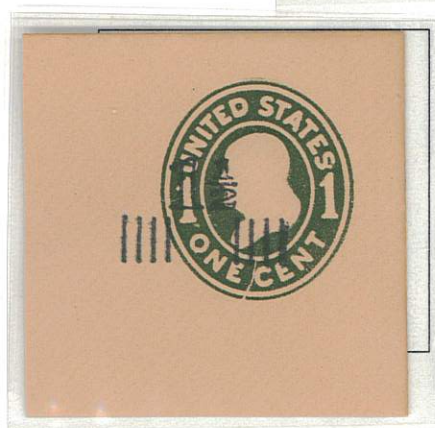
U508A - U514

United States Envelope Cut Squares

Franklin
Issue of 1903 Surcharged
1925



Issue of 1907 - 16 Surcharged



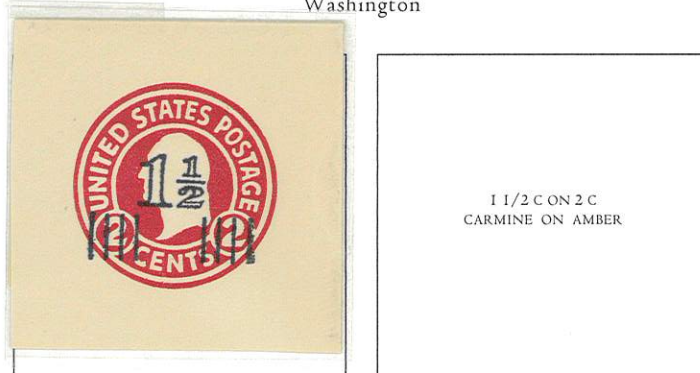
U515 - U521

United States Envelope Cut Squares

Franklin
Issue of 1916 - 20 Surcharged
1925



Washington



Franklin
Magenta Surcharge

UPSS 3253



U522 - U528

United States Envelope Cut Squares

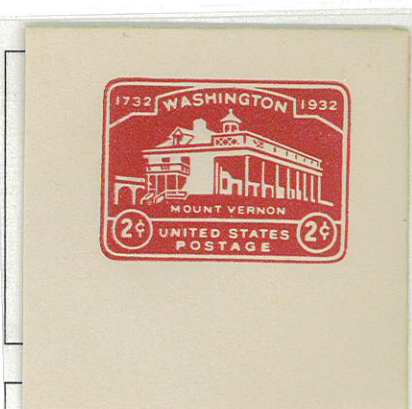
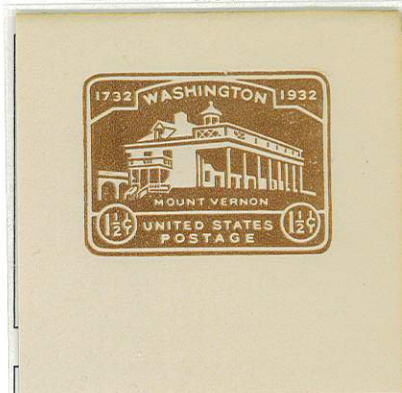
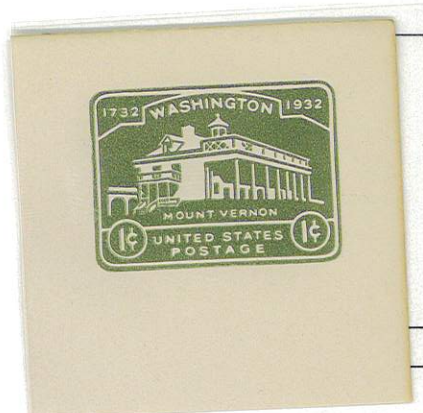
Sesquicentennial Issue

July 27, 1926



Washington Bicentennial Issue

1932



3 C
VIOLET

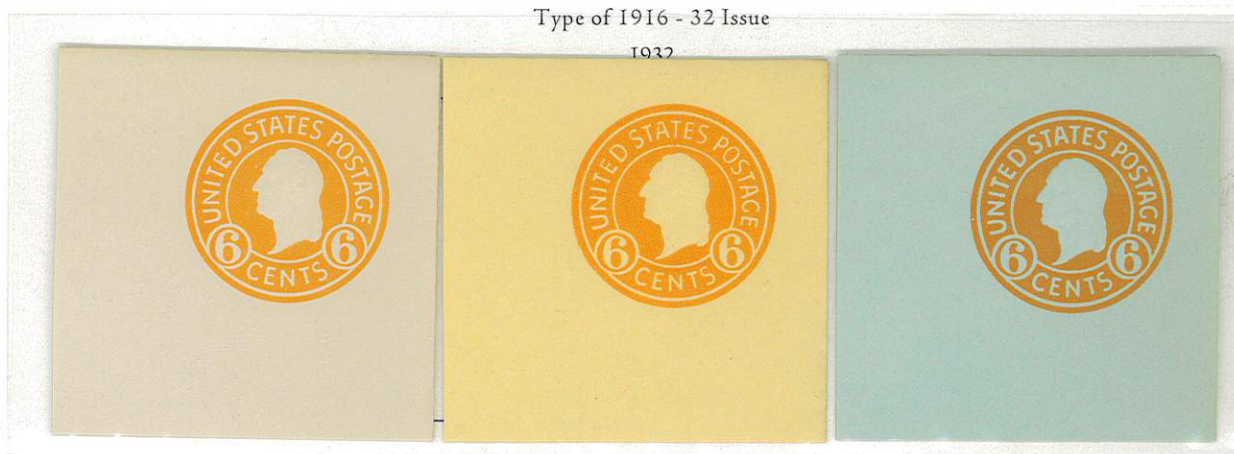


U525a

U529 - U534

United States Envelope Cut Squares

Washington
Type of 1916 - 32 Issue
1932



Franklin
1950



Washington
1950



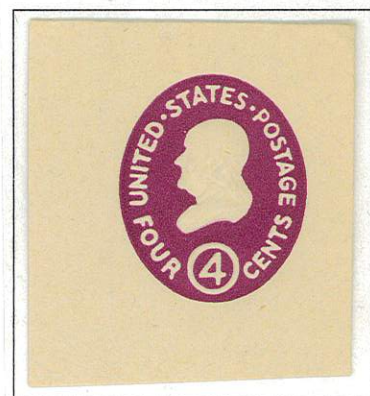
U535 - U536

United States Envelope Cut Squares

Washington
1952



Franklin
1958



U537 - U542

United States Envelope Cut Squares

Washington

1958



1960

Franklin

Washington



U543 - U546

United States Envelope Cut Squares

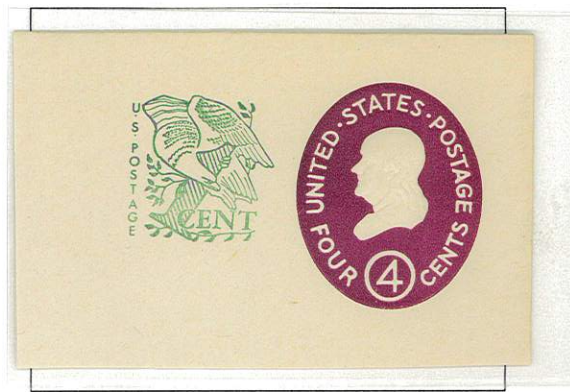
Pony Express Centennial Issue
1960



Lincoln
1962



Franklin
1962



New York World's Fair Issue
1964



U547 - U551

United States Envelope Cut Squares

Liberty Bell
1965



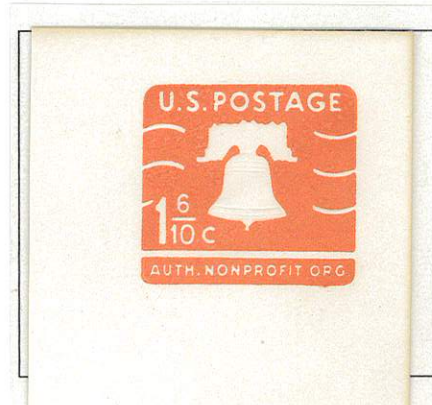
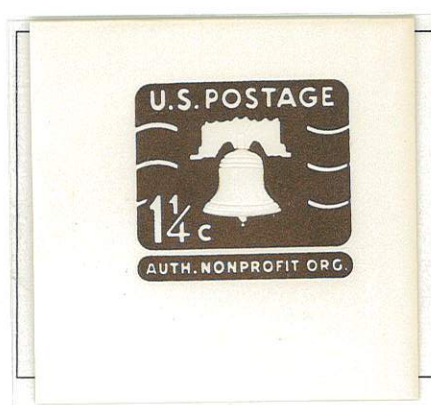
Old Iron Sides
1965



Eagle
1965



Liberty Bell
1968 - 69



Head of Statue of Liberty
1968



United States Envelope Cut Square

U552, U554, U555,
U563, U566

Old Iron Sides
1968



Eagle
1968



Moby Dick
1970



Youth Conference Issue
1971



Bowling Issue
1971



United States Envelope Cut Squares

U556, U557, U561,
U562, U564

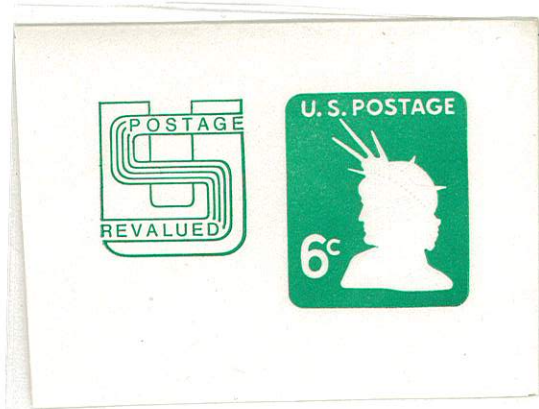
Liberty Bell
1971



Eagle
1971



Statue of Liberty
1971



Youth Conference
1971

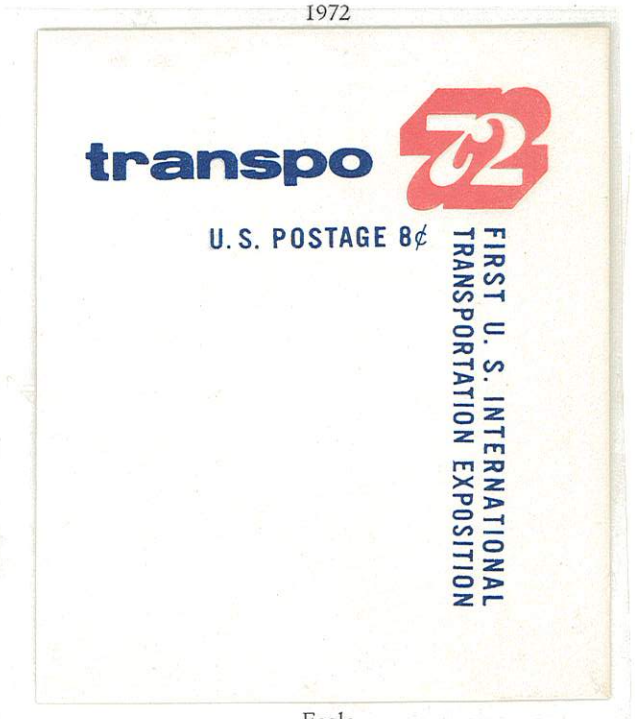


White House
Conference on Aging
1971

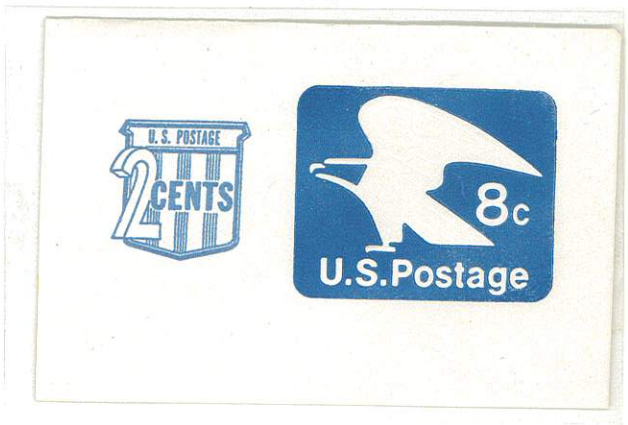


United States Envelope Cut Squares

International Transportation Exhibition Issue
1972



Eagle
1973



Liberty Bell
1973



U568 - U569

United States Envelope Cut Squares

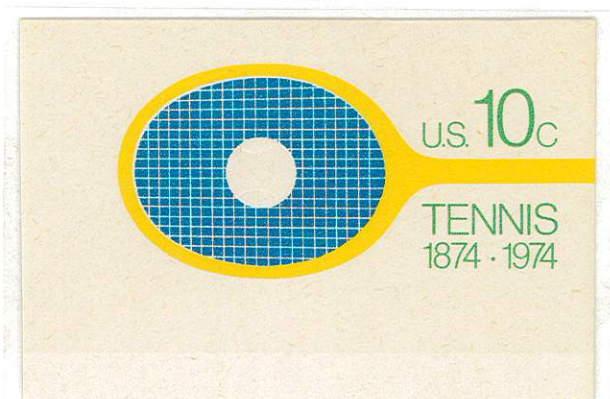
"Volunteer Yourself"

1974



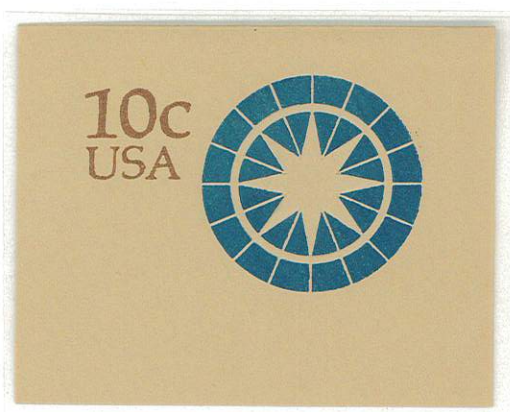
Tennis Centenary Issue

1974



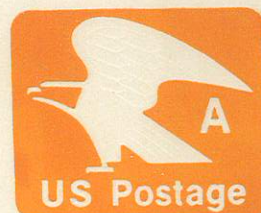
United States Envelope Cut Squares

U571 -U576



United States Envelope Cut Squares

U577 - U582



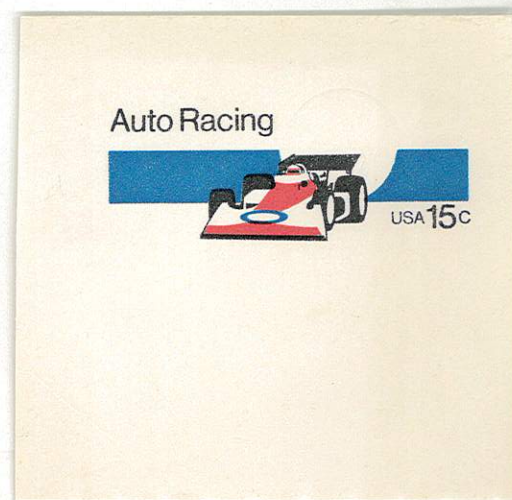
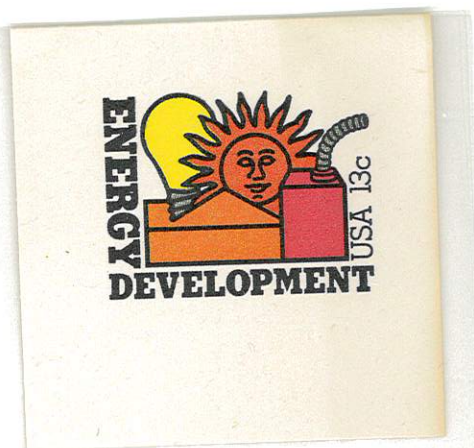
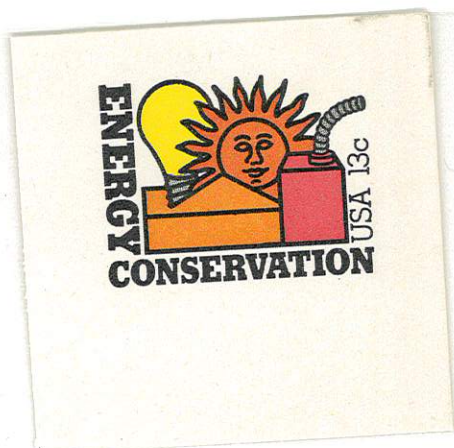
United States Envelope Cut Squares

U588



United States Envelope Cut Squares

U583 - U587



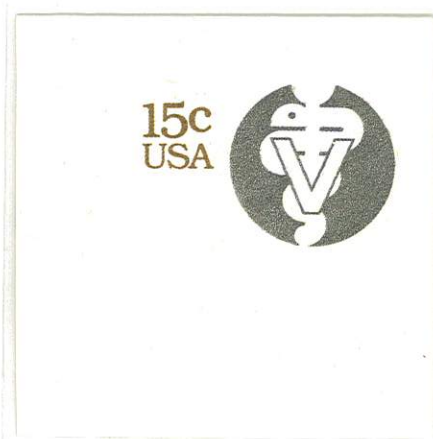
United States Envelope Cut Squares

U589 - U594



United States Envelope Cut Squares

U595 - U601



United States Envelope Cut Squares

U602 - U606

The Great Seal
of the United States
1782-1982
USA 20c

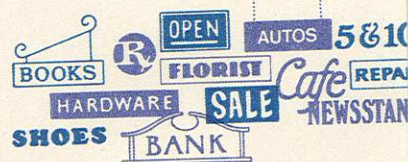
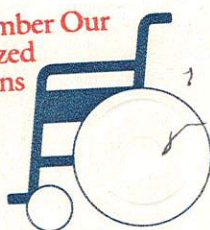


The
Purple
Heart
1782
1982
USA 20c



Remember Our
Paralyzed
Veterans

USA
20c



Small Business USA 20c

United States Envelope Cut Squares

U607 - U613



United States Envelope Cut Squares



United States Envelope Cut Squares

U614 – U619; U621



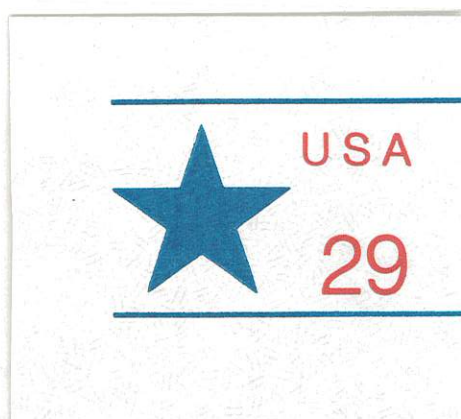
United States Envelope Cut Squares

U629; U622



United States Envelope Cut Squares

U623 - U627



United States Envelope Cut Squares

U628 - U632

USA
19.8
Bulk Rate



For a stronger
America,
count us in!



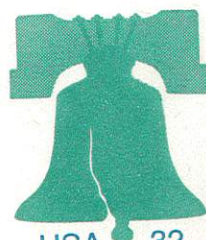
USA
29

43 million people with disabilities

USA
29



29
USA



USA 32

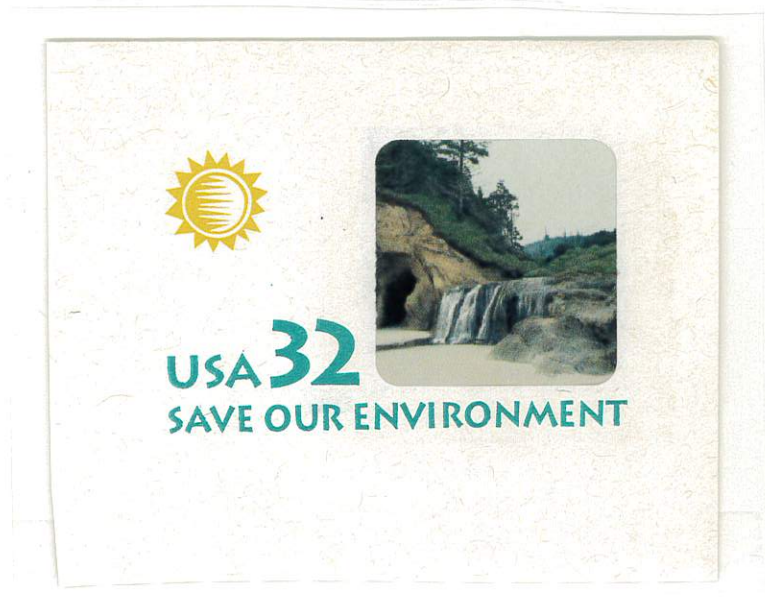
United States Envelope Cut Squares

U633 – U635; U637



United States Envelope Cut Squares

U640 - U643



United States Envelope Cut Squares

U644 - U649





The Philatelic Foundation

70 West 40th Street • 15th Floor
New York, NY 10018
EXPERT COMMITTEE

No. 444414
02/07/2007

We have examined the enclosed item, of which a photograph is attached, and *described by the applicant* as follows:

Country: UNITED STATES OF AMERICA

Cat. No.	Issue	Denom.	Color
U466A	1920	2¢ on 2¢	chocolate

Scott's unless otherwise specified.

UNUSED, CUT SQUARE.

AND WE ARE OF THE OPINION THAT:

IT IS GENUINE, WITH LIGHT BENDS. *****



444414

F 160578

[Signature]
For The Expert Committee
Chairman

Photocopies of this Certificate are not valid.

Submitted by

NUTMEG STAMP SALES



The Philatelic Foundation

70 West 40th Street • 15th Floor
New York, NY 10018
EXPERT COMMITTEE

No. 500185
12/15/2011

We have examined the enclosed item, of which a photograph is attached, and *described by the applicant* as follows:

Country: UNITED STATES OF AMERICA

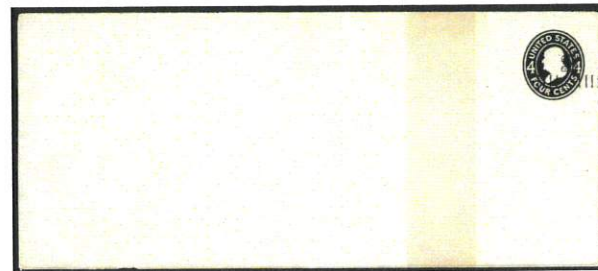
Cat. No.	Issue	Denom.	Color
U463A	1930	2¢ on 4¢	black

Scott's unless otherwise specified.

UNUSED ENTIRE.

AND WE ARE OF THE OPINION THAT:

IT IS GENUINE, THE ENTIRE WITH A TONING BAND AT RIGHT. *****



500185

F 230025

[Signature]
For The Expert Committee
Chairman

Photocopies of this Certificate are not valid.

Submitted by

RASDALE STAMP COMPANY



THE PHILATELIC FOUNDATION

21 EAST 40TH STREET
NEW YORK, N.Y. 10016
EXPERT COMMITTEE

No. 0271958
4/21/93

We have examined the enclosed item, of which a photograph is attached, and described by the applicant as follows:

Country: UNITED STATES OF AMERICA

Cat. No.	Issue	Denom.	Color
U462	1920	2¢ on 4¢	chocolate

Scott's unless otherwise specified.

UNUSED
CUT SQUARE.

AND WE ARE OF THE OPINION THAT:

IT IS GENUINE*****



271958

A 132598

[Signature]
For The Expert Committee
ACTING Chairman



No. 00101184

8/11/2003

Professional Stamp Experts

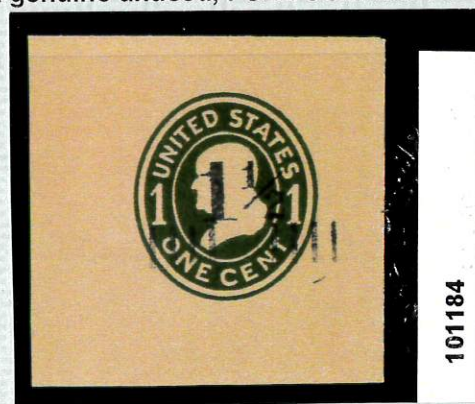
P.O. Box 6170, Newport Beach, CA 92658

Authentication Committee

We have examined the enclosed item submitted to PSE, of which the photo is attached with seal and are of the opinion that:

Cat #	Issue	Denom.	Color
US#U492	1925	1 1/2c on 1c	Green on oriental buff

"it is a genuine unused, FULL CORNER cut square."



1. K. Welford

2. R. A. Champagne

3. R. Shoemaker

[Signature]
For The Expert Committee

**The Philatelic Foundation**501 Fifth Avenue • Suite 1901
New York, NY 10017

EXPERT COMMITTEE

No. 0340971
6/21/99

We have examined the enclosed item, of which a photograph is attached, and *described by the applicant* as follows:

Country: UNITED STATES OF AMERICA

Cat. No.	Issue	Denom.	Color
U487	1925	1 1/2¢	on 2¢, green

Scott's unless otherwise specified.

UNUSED

AND WE ARE OF THE OPINION THAT:

IT IS GENUINE* * * * *



[Signature]
For The Expert Committee
Chairman

Photocopies of this Certificate are not valid.

Submitted by

LARRY LYONS

**The Philatelic Foundation**70 West 40th Street • 15th Floor
New York, NY 10018
EXPERT COMMITTEENo. 473806
02/26/2009

We have examined the enclosed item, of which a photograph is attached, and *described by the applicant* as follows:

Country: UNITED STATES OF AMERICA

Cat. No.	Issue	Denom.	Color
U479	1920	2¢ on 3¢	dark violet

Scott's unless otherwise specified.

UNUSED, FULL CORNER.

AND WE ARE OF THE OPINION THAT:

IT IS A GENUINE SCOTT U479b, WITH SURCHARGE ON U436d, DIE 7. * * * * *



473806

[Signature]
For The Expert Committee
Chairman

Photocopies of this Certificate are not valid.

Submitted by

MARK MORROW

F 197632



The Philatelic Foundation

70 West 40th Street • 15th Floor
New York, NY 10018
EXPERT COMMITTEE

No. 499487
10/20/2011

We have examined the enclosed item, of which a photograph is attached, and *described by the applicant* as follows:

Country: UNITED STATES OF AMERICA

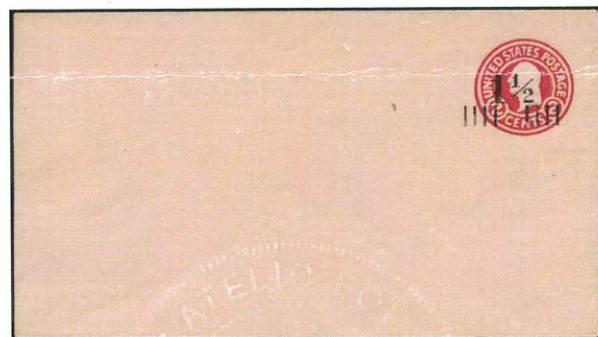
Cat. No.	Issue	Denom.	Color
U503	1925	1½¢ on 2¢	carmine on oriental buff

Scott's unless otherwise specified.

UNUSED ENTIRE.

AND WE ARE OF THE OPINION THAT:

IT IS GENUINE*****



499487

F 217585

For The Expert Committee
Chairman

Photocopies of this Certificate are not valid.

Submitted by

H. R. HARMER, INC.



The Philatelic Foundation

501 Fifth Avenue • Suite 1901
New York, NY 10017
EXPERT COMMITTEE

No. 0384708
6/05/02

We have examined the enclosed item, of which a photograph is attached, and *described by the applicant* as follows:

Country: UNITED STATES OF AMERICA

Cat. No.	Issue	Denom.	Color
U504a	1925	1 1/2¢ on 2¢	carmine on blue

Scott's unless otherwise specified.

UNUSED
FULL CORNER.

AND WE ARE OF THE OPINION THAT:

IT IS GENUINE*****

D 086826

For The Expert Committee
Chairman

Photocopies of this Certificate are not valid.

Submitted by

MATTHEW BENNETT

UC1 - UC7

United States Envelope Cut Squares

AIR POST STAMPS

Plane in Flight
1929-44



UC8 - UC13

United States Envelope Cut Squares

AIR POST STAMPS

1945

Envelope of 1916 Surcharged



Same on Envelope of 1932



Envelopes of 1934-44 Surcharged

1946



United States Envelope Cut Squares

UC14 - UC15
UC17 - UC20

AIR POST STAMPS

DC-4 Skymaster

1946



Washington & Franklin
US Postage Stamp Centenary

1947



DC-4 Skymaster

1950



DC-4 Skymaster of 1946 Surcharged

1951



United States Envelope Cut Squares

AIR POST STAMPS

DC-4 Skymaster
1947



UC16c - UC16d

United States Envelope Cut Squares

AIR POST STAMPS

DC-4 Skymaster

Air Letter & Aerogramme on Face

1953



United States Envelope Cut Squares

AIR POST STAMPS

DC-4 Skymaster
 Surcharged in Red
 1952



US Postage Stamp Centenary
 1952



UC25 - UC26

United States Envelope Cut Squares

AIR POST STAMPS

Eagle in Flight

1956



DC-4 Skymaster

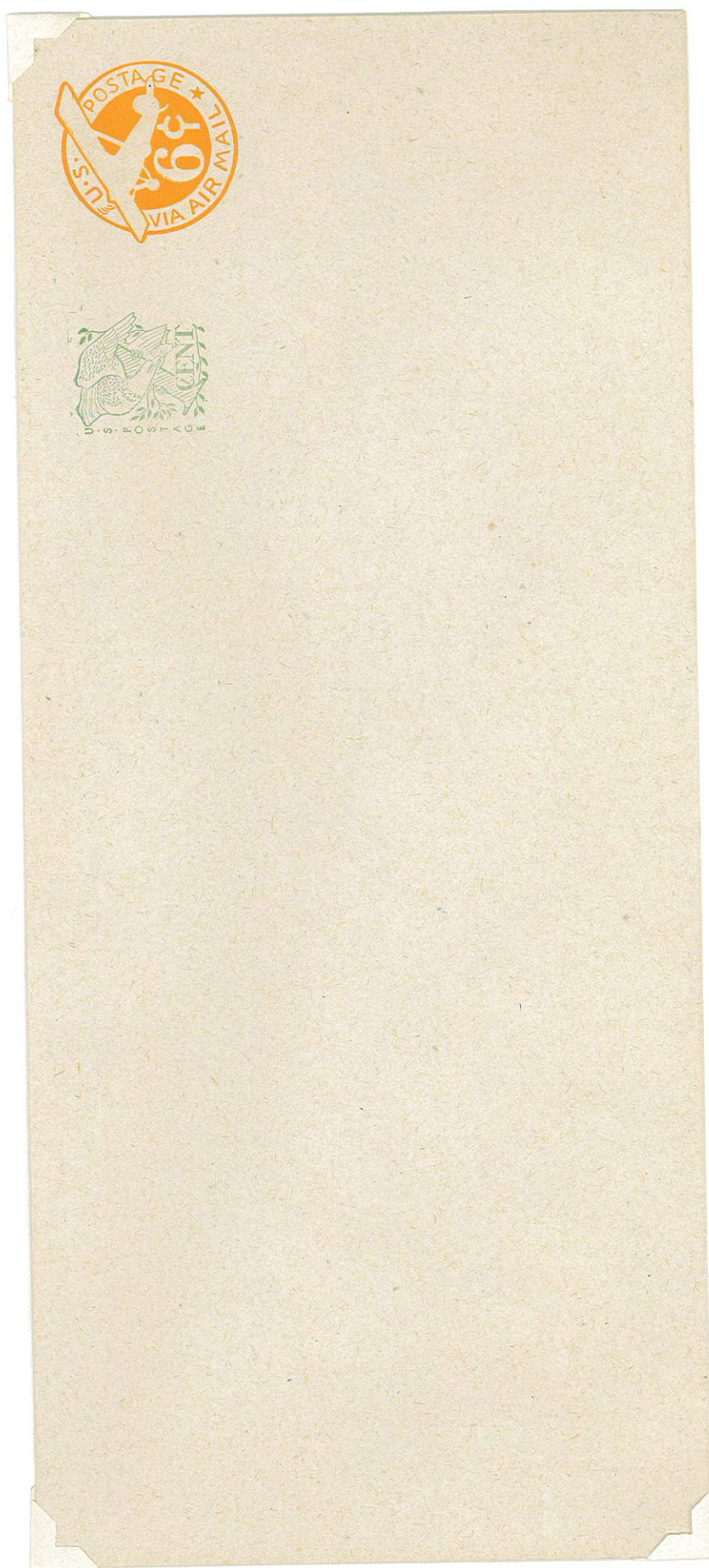
1958



United States Envelope Cut Squares



United States Envelope Cut Squares



UC29

United States Envelope Cut Squares



PALO

UC27 - UC31

United States Envelope Cut Squares

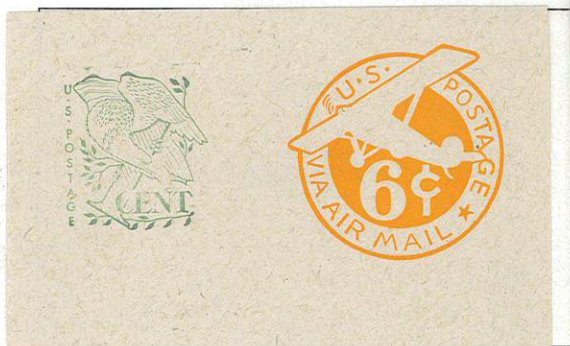
AIR POST STAMPS

Plane in Flight Issues of 1934-44

Surcharged in Green

1958

6 C + 1 C
ORANGE ON WHITE
DIE 2A



DC-4 Skymaster Issue

Surcharged in Green

1958



Eagle in Flight Issue

Surcharged in Green

1958



UC32 - UC32a

United States Envelope Cut Squares

AIR POST STAMPS

Jet Airliner
1958



Jet Airliner
1959



UC35

United States Envelope Cut Squares

AIR POST STAMPS

Jet Airliner & Globe
1961



PALO

UC33 - UC34
UC36 - UC37

United States Envelope Cut Squares

AIR POST STAMPS

Silhouette of Jet Airliner



UC38 - UC39

United States Envelope Cut Squares

AIR POST STAMPS

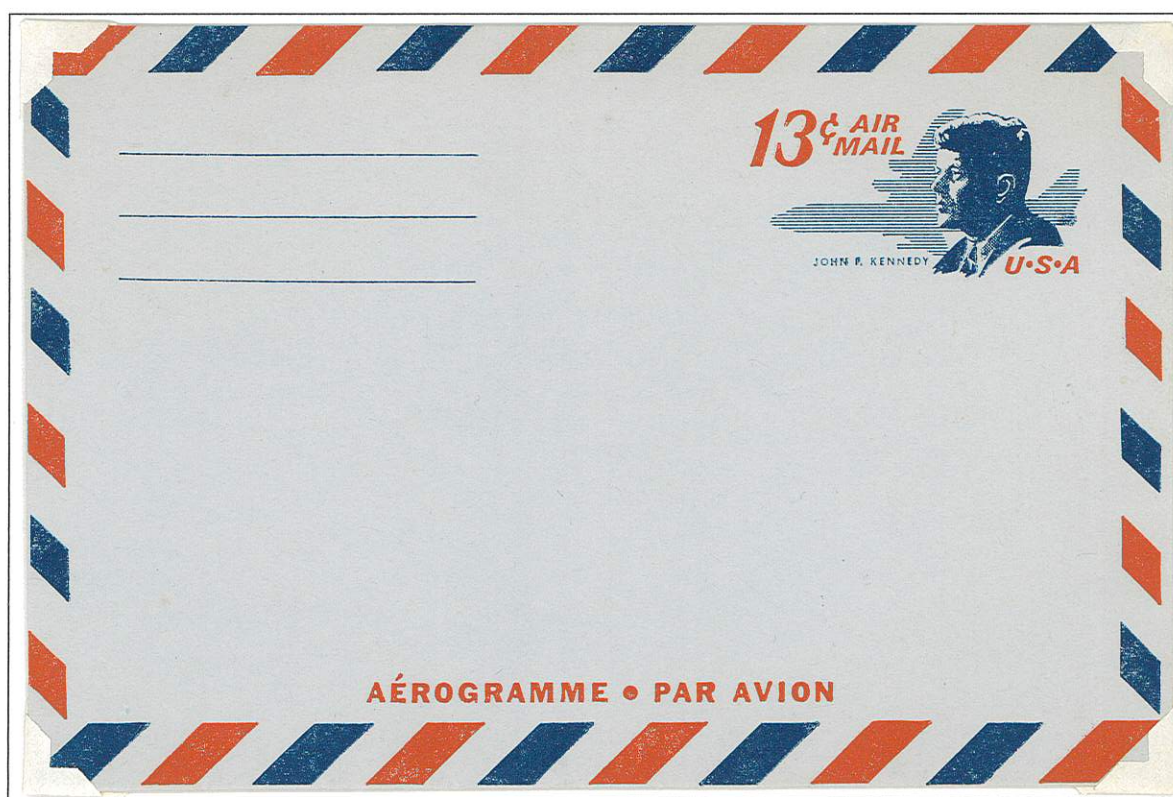
John F. Kennedy and Jet Plane

1965



John F. Kennedy and Jet Plane

1967



United States Envelope Cut Squares

UC40 - UC41;
UC43; UC45;
UC47

AIR POST STAMPS

Jet Liner
1968



Jet Airliner of 1965 Surcharged
1968



Jet Plane
Embossed
1971



Jet Liner of 1968
Surcharged in Green
1971



Bird in Flight
1973

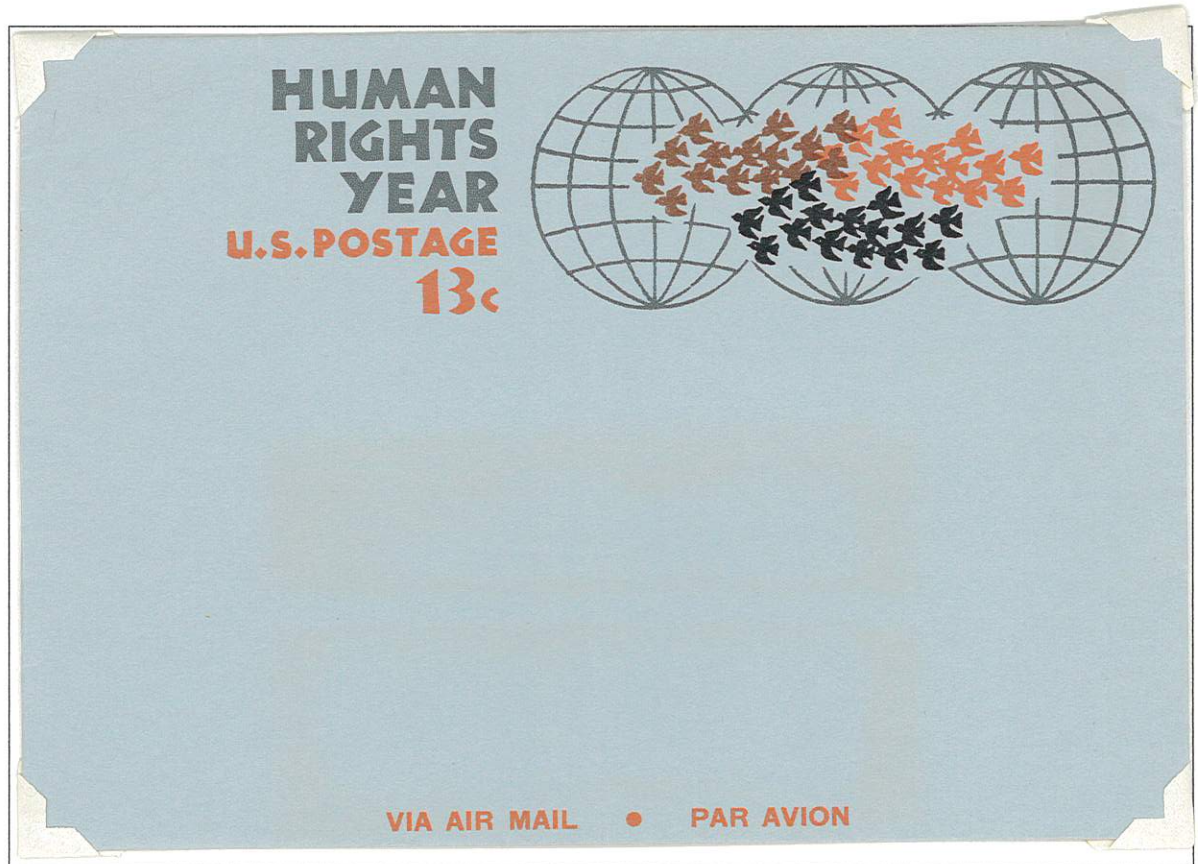


UC42

United States Envelope Cut Squares

AIR POST STAMPS

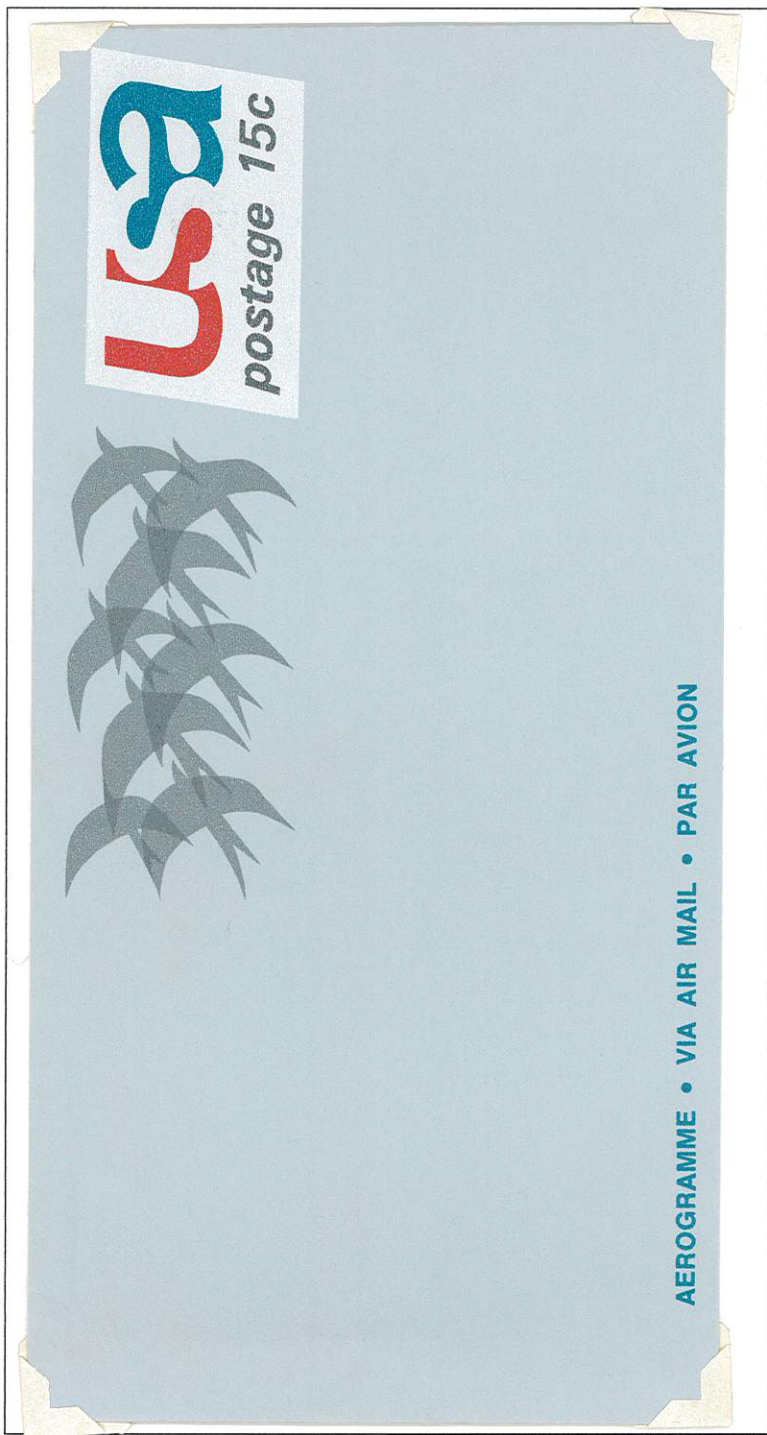
Human Rights Year
1968



United States Envelope Cut Squares

AIR POST STAMPS

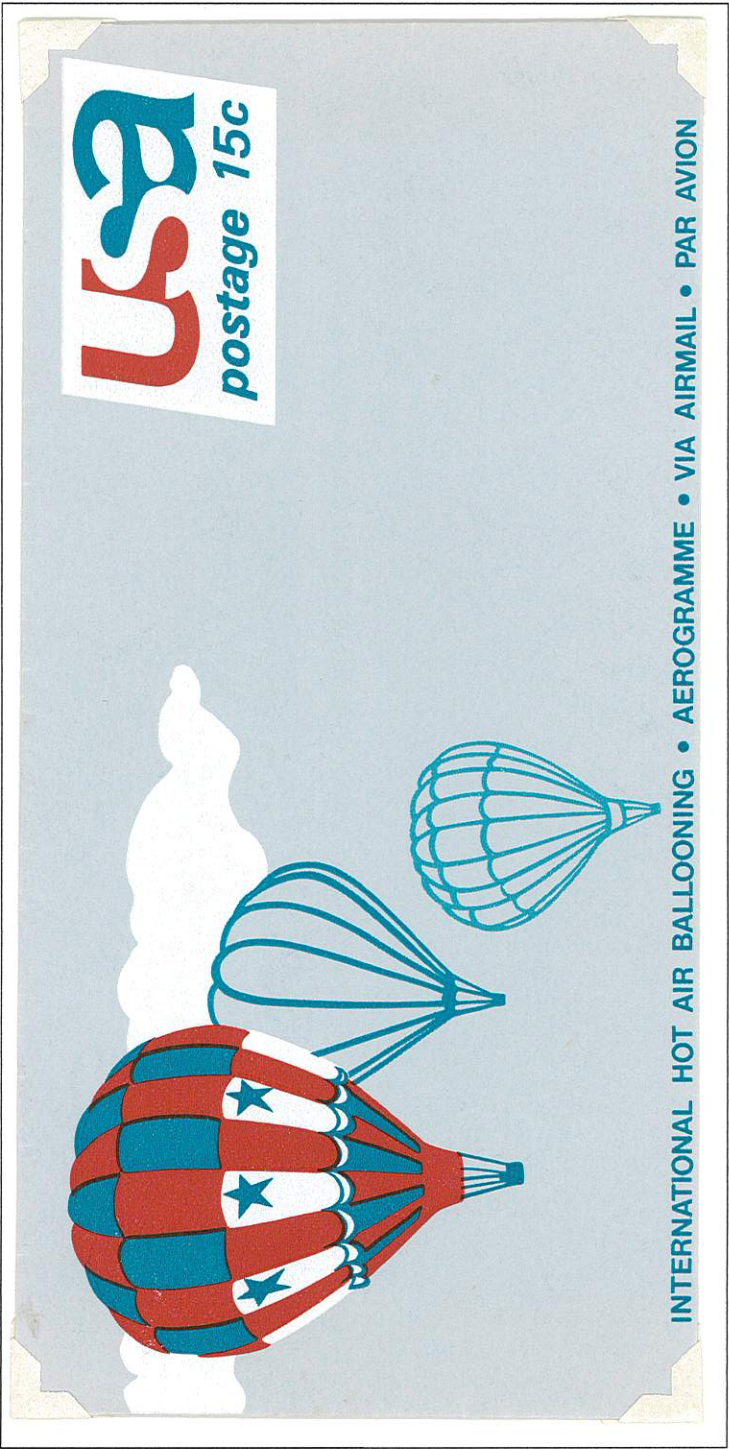
Birds in Flight
1971



United States Envelope Cut Squares

AIR POST STAMPS

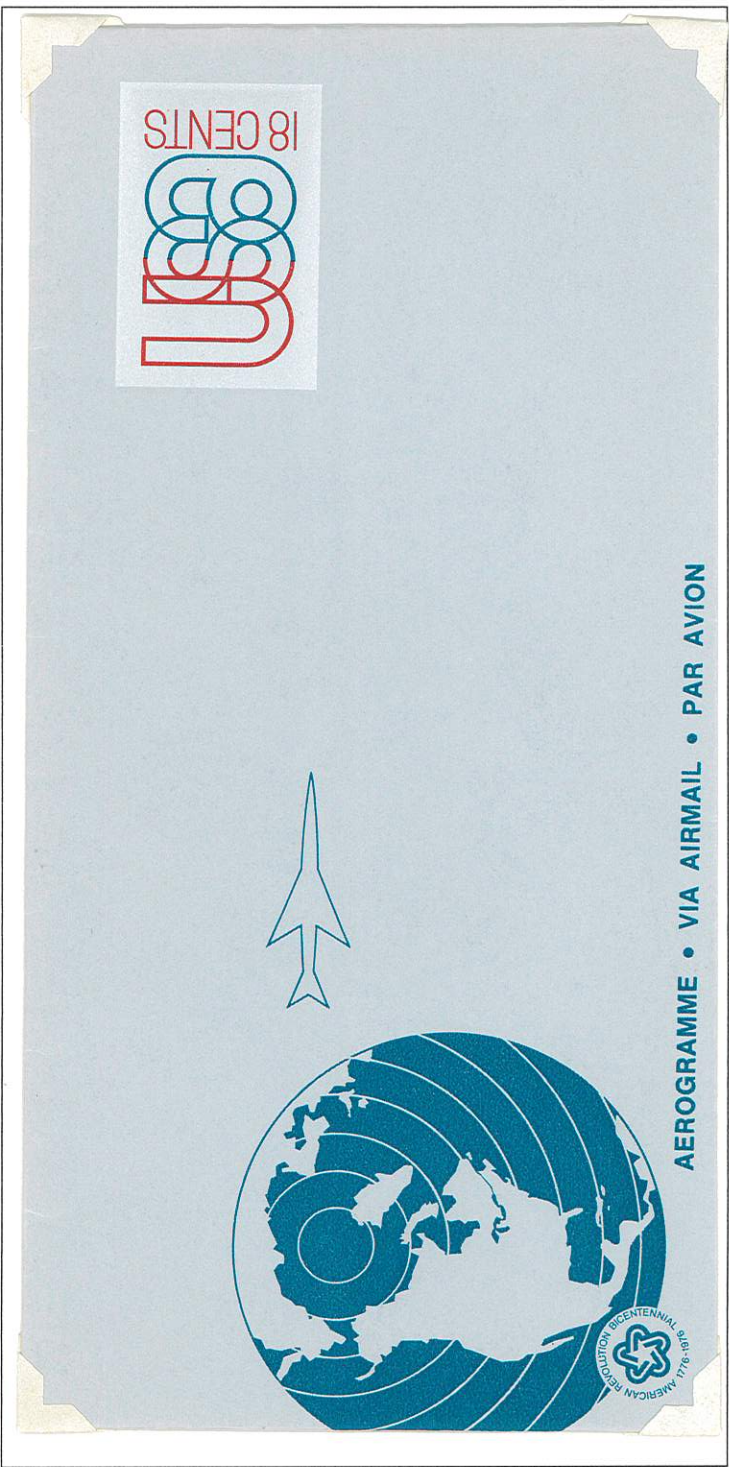
International Hot Air Ballooning
1973



United States Envelope Cut Squares

AIR POST STAMPS

USA
1974



United States Envelope Cut Squares

AIR POST STAMPS

25th Anniversary of NATO Issue
1974



United States Envelope Cut Squares



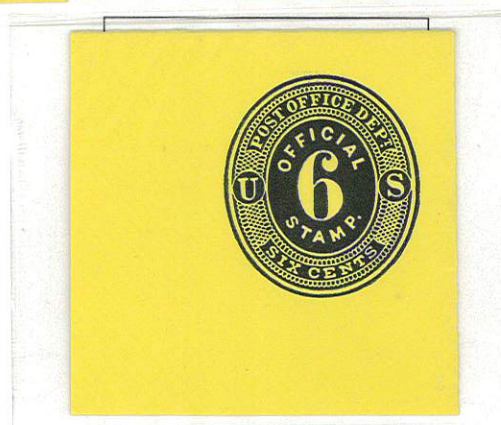
U01 - U06

United States Envelope Cut Squares

POST OFFICE DEPARTMENT

Numerals

1873



1874-79

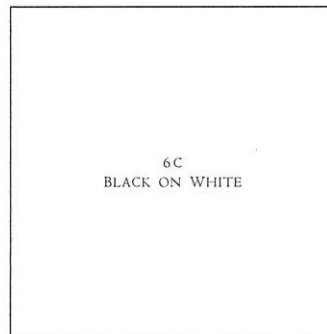
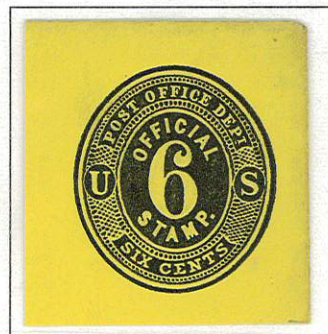
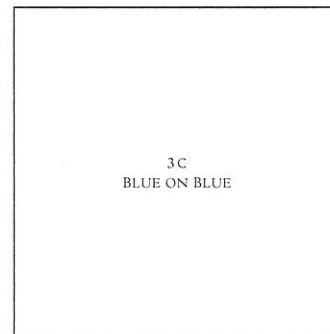
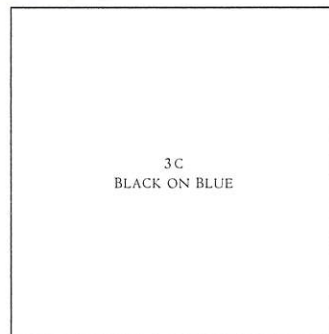
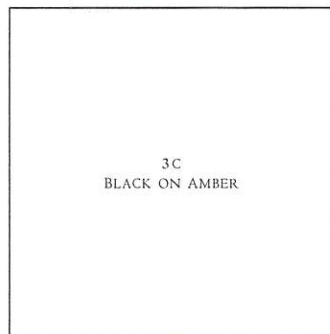
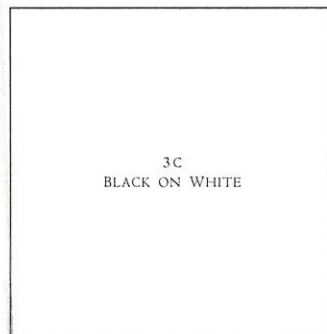
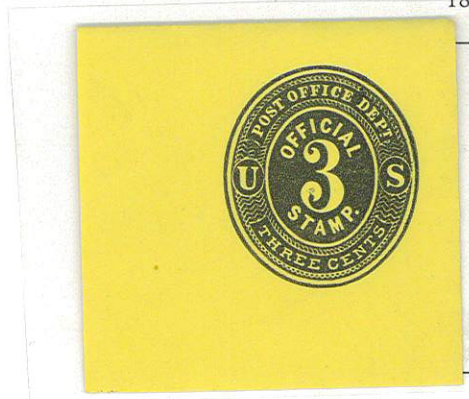


United States Envelope Cut Squares

U07 - U010
U012 - U013

POST OFFICE DEPARTMENT

Numerals
1874-79



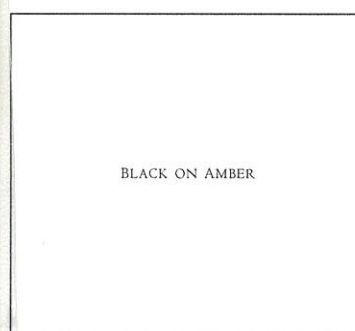
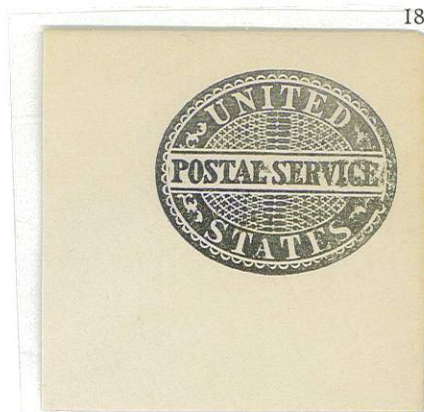
UO14 - UO17

United States Envelope Cut Squares

POSTAL SERVICE

"Postal Service" in Oval

1877



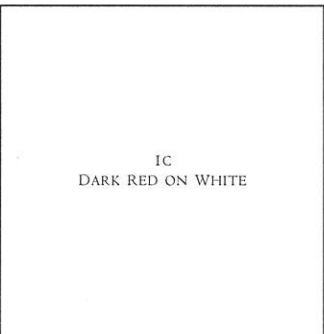
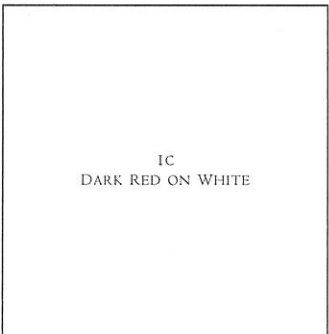
United States Envelope Cut Squares

WAR DEPARTMENT

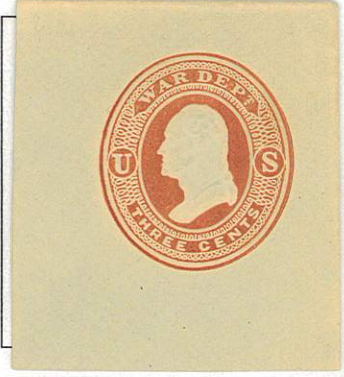
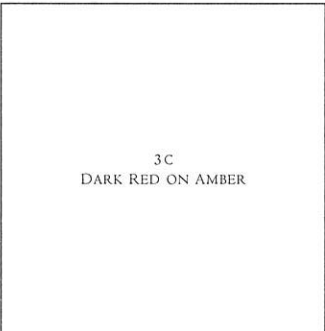
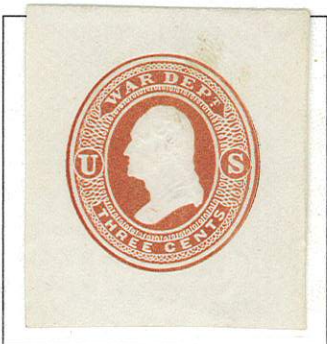
Reay Issue
1873

Franklin

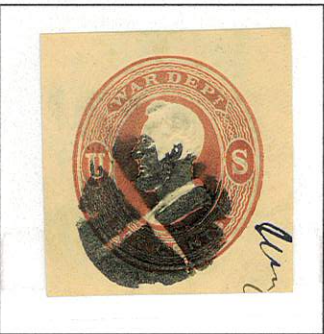
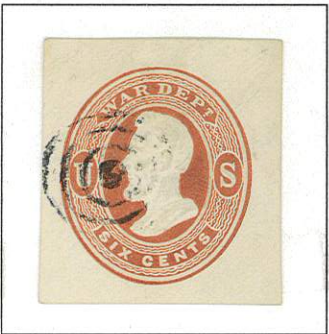
Jackson



Washington



Lincoln

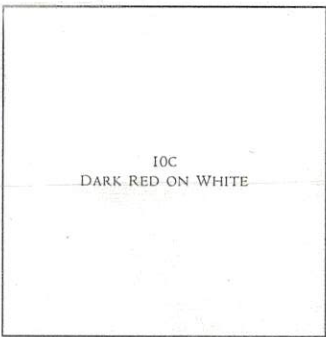


United States Envelope Cut Squares

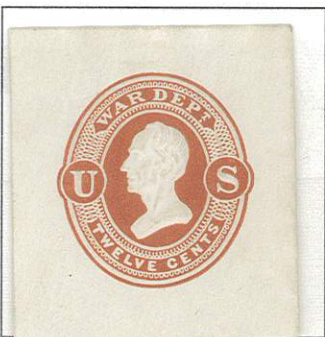
WAR DEPARTMENT

Reay Issue
1873

Jefferson



Clay



Webster



Scott



Hamilton



UO30 - UO36

United States Envelope Cut Squares

WAR DEPARTMENT

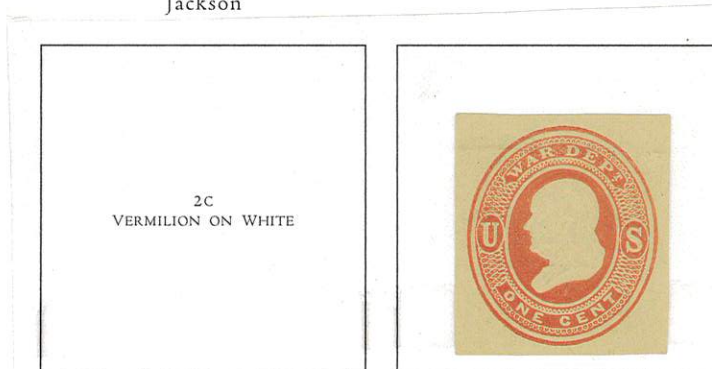
Reay Issue

1873

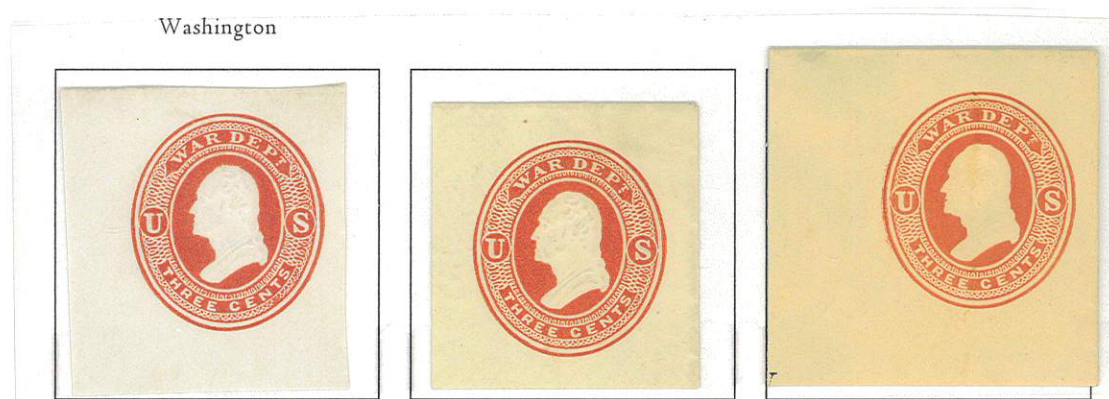
Franklin



Jackson



Washington



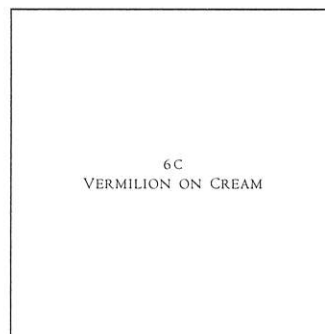
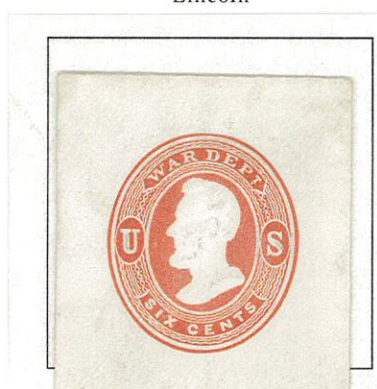
United States Envelope Cut Squares

WAR DEPARTMENT

Reay Issue

1873

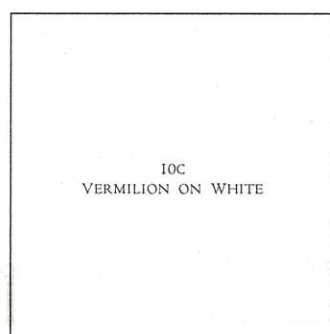
Lincoln



Jefferson

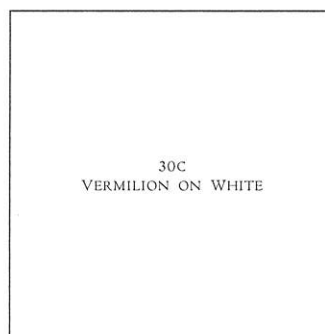
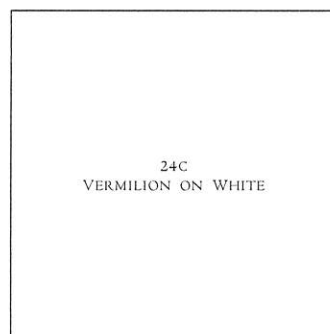
Clay

Webster



Scott

Hamilton





THE PHILATELIC FOUNDATION

21 EAST 40TH STREET
NEW YORK, N.Y. 10016

EXPERT COMMITTEE

No. 0204234
5/03/90

We have examined the enclosed item, of which a photograph is attached, and described by the applicant as follows:

Country: UNITED STATES OF AMERICA

Cat. No.	Issue	Denom.	Color
U038	1873	6¢	vermillion

Scott's unless otherwise specified.

UNUSED
CUT SQUARE

AND WE ARE OF THE OPINION THAT:

IT IS A GENUINE SCOTT U037, VERMILION ON WHITE,
THE SCOTT LISTING IS IN ERROR. * * * * *



Paul G. Smith

R. Rosen
For The Expert Committee
Chairman
ACTING

A 78825

Submitted by RONALD D. MITCHELL

United States Envelope Cut Squares

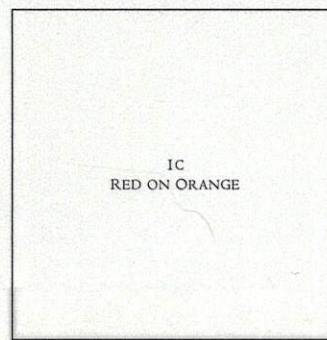
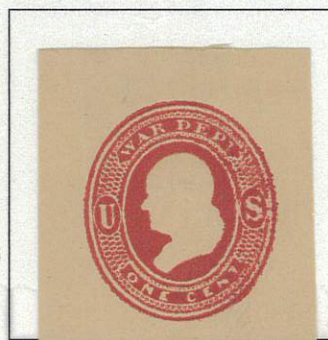
U044 - U045A
U046 - U050

WAR DEPARTMENT

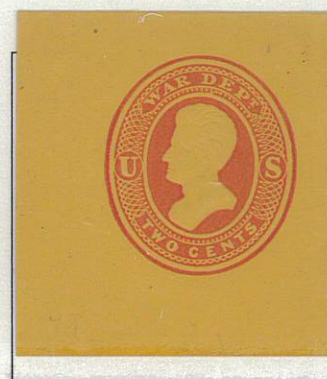
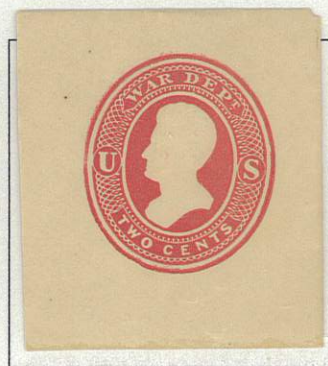
Plimpton Issue

1875

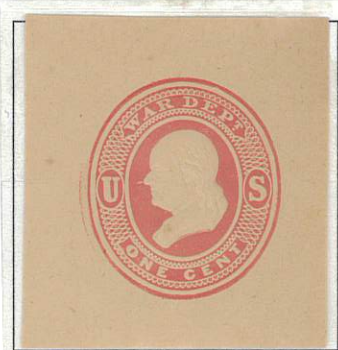
Franklin



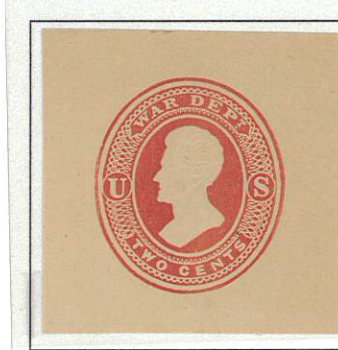
Jackson



Franklin



Jackson





The Philatelic Foundation

501 Fifth Avenue • Suite 1901
New York, NY 10017

EXPERT COMMITTEE

No. 360248
D 049942

We have examined the enclosed item, of which a photograph is attached, and *described by the applicant* as follows:

Country: UNITED STATES OF AMERICA

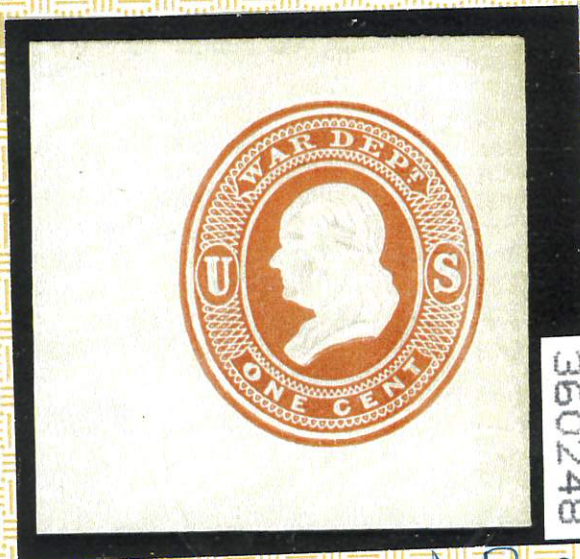
Cat. No.	Issue	Denom.	Color
U44	1875	1c	Red

Scott's unless otherwise specified.

UNUSED
FULL CORNER

AND WE ARE OF THE OPINION THAT

IT IS GENUINE



360248

D 049942

For The Expert Committee
Chairman

Photocopies of this Certificate are not valid.

Submitted by

COLUMBIA TRADING CO., INC.

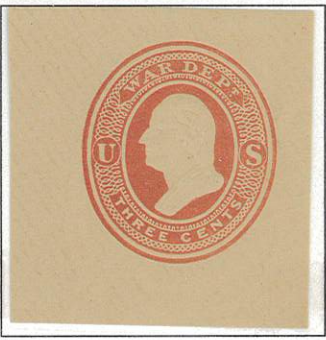
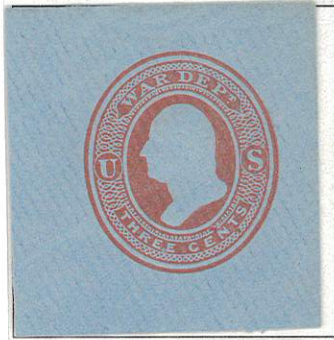
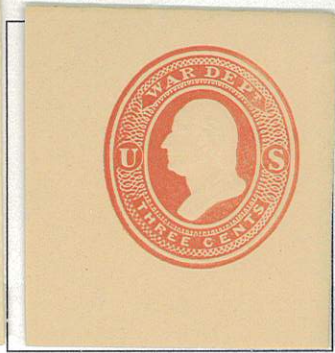
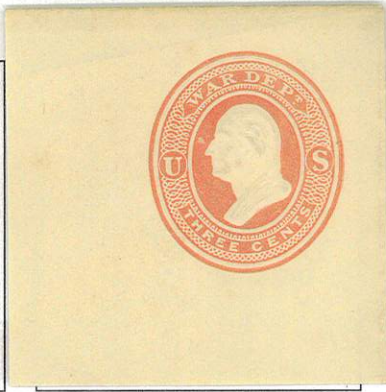
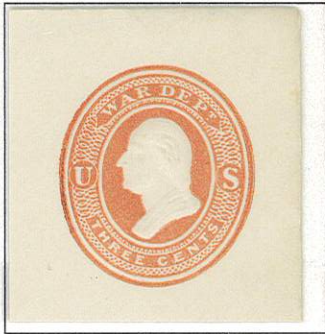
United States Envelope Cut Squares

WAR DEPARTMENT

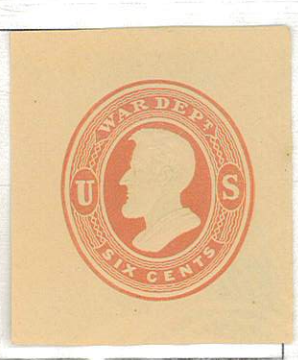
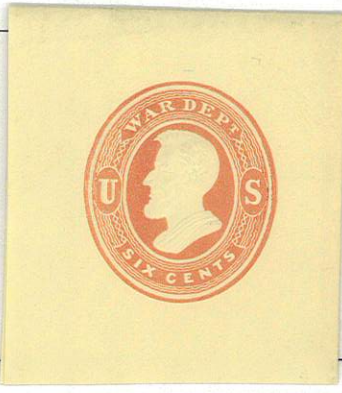
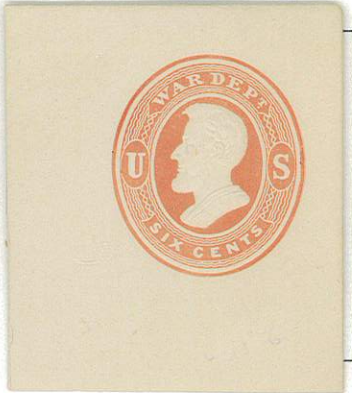
Plimpton Issue

1875

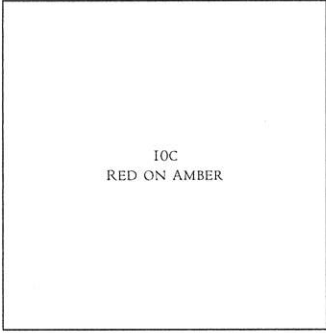
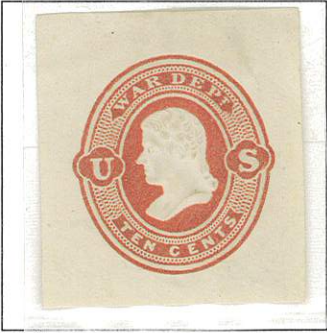
Washington



Lincoln



Jefferson



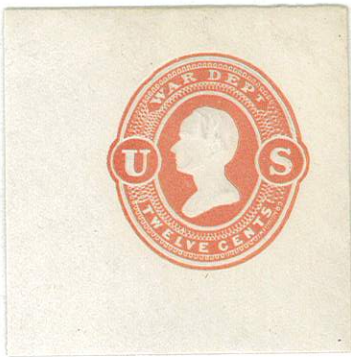
United States Envelope Cut Squares

WAR DEPARTMENT

Plimpton Issue

1875

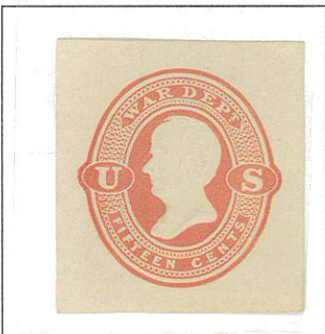
Clay



12C
RED ON AMBER

12C
RED ON CREAM

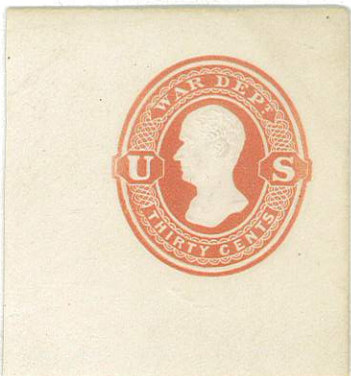
Webster



15C
RED ON AMBER

15C
RED ON CREAM

Hamilton



30C
RED ON AMBER

30C
RED ON CREAM

U070 - U072

United States Envelope Cut Squares

POSTAL SAVINGS STAMPED ENVELOPES

Numeral in Oval
1911



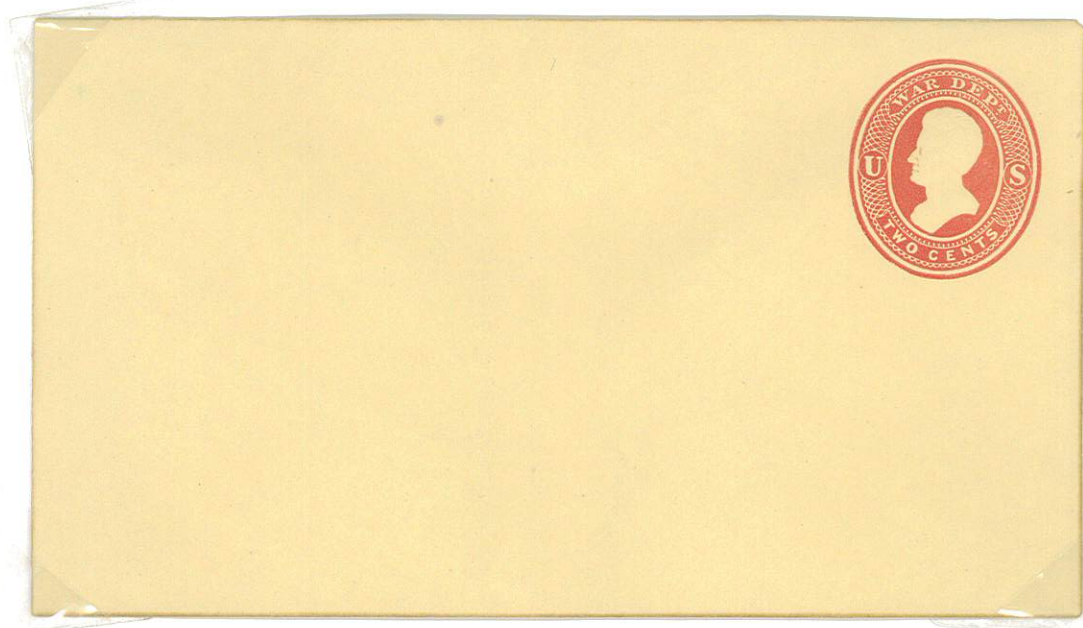
United States Envelope Cut Squares

UO20 Entire



United States Envelope Cut Squares

UO48. Entire.



UO49. Entire

