

## 1908 SERIES

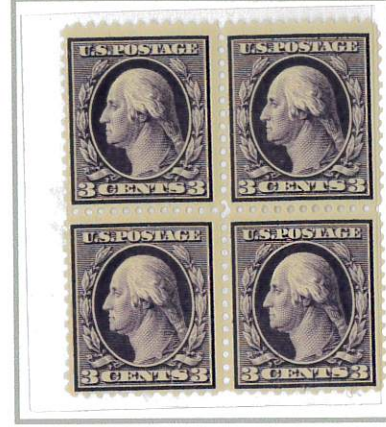
WATERMARKED USPS.  
PERFORATED 12



ONE CENT, #331



TWO CENTS, #332



THREE CENTS, #333



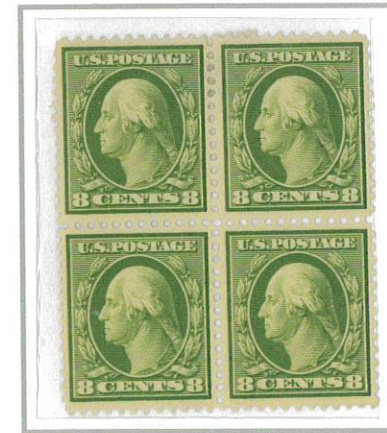
FOUR CENTS, #334



FIVE CENTS, #335



SIX CENTS, #336



EIGHT CENTS, #337

WATERMARKED  
PERFORATED 12

## 1908 SERIES USPS.



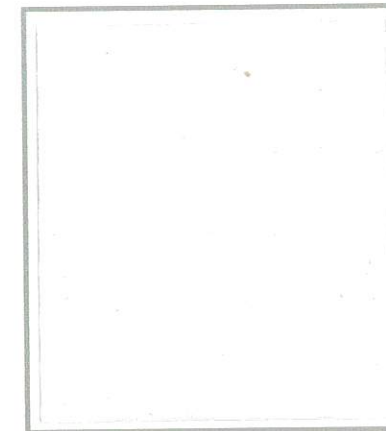
TEN CENTS, #338



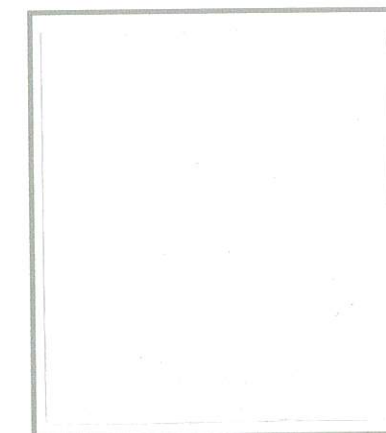
THIRTEEN CENTS, #339



FIFTEEN CENTS, #340



FIFTY CENTS, #341



1 DOLLAR, #342



## 1908 SERIES

**WATERMARKED USPS.**  
**BLuish PAPER, PERFORATED 12**

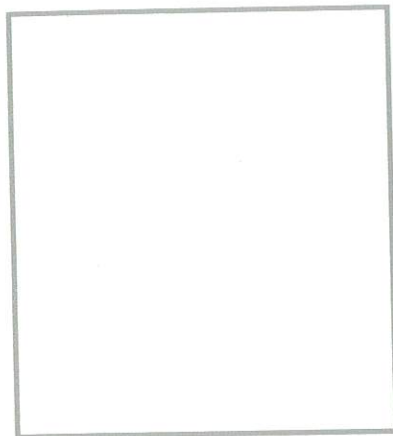
These stamps were printed on a special  
paper containing 30% rag stock.



ONE CENT, #357



TWO CENTS, #358



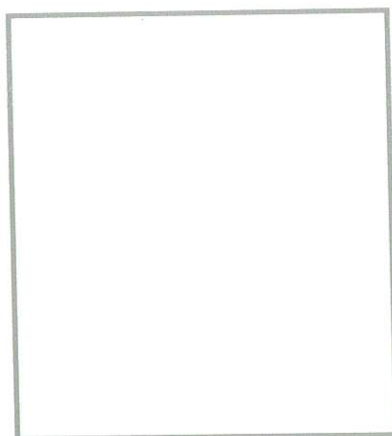
THREE CENTS, #359



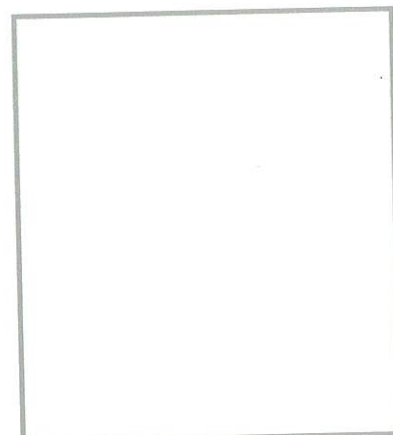
FIVE CENTS, #361



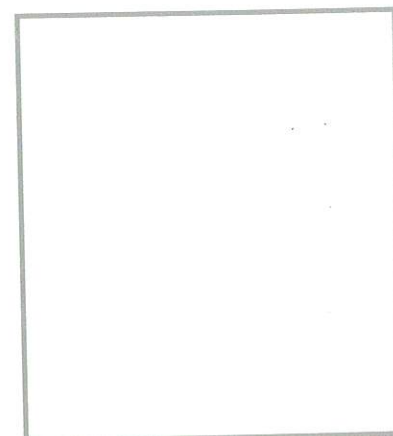
SIX CENTS, #362



10 CENTS, #364



13 CENTS, #365

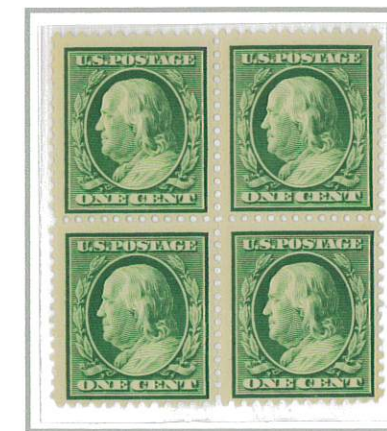


15 CENTS, #366

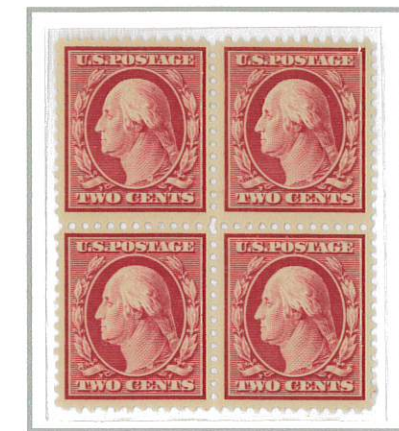
The four and eight cent stamps on bluish paper were not regularly issued.

## 1908 SERIES

**WATERMARKED USPS.**  
**PERFORATED 12**



ONE CENT, #374

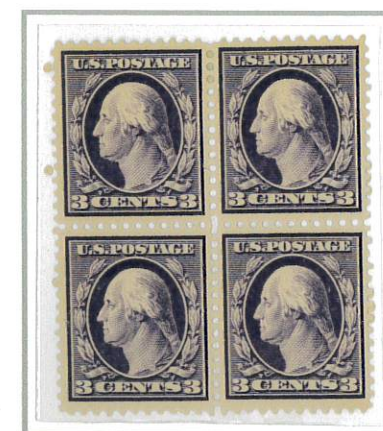


TWO CENTS, #375



TWO CENTS, CLAY PAPER, #375

The so-called clay  
paper variety was  
printed on paper that  
had been made using  
muddy water.



3 CENTS, #376



4 CENTS, #377



5 CENTS, #378

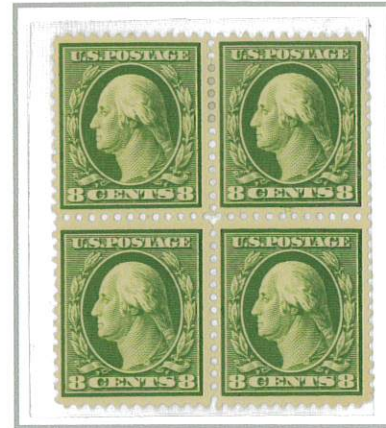


## 1908 SERIES

WATERMARKED USPS.  
PERFORATED 12



6 CENTS, #379



8 CENTS, #380



10 CENTS, #381

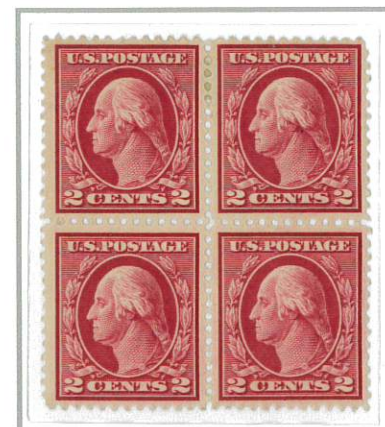


15 CENTS, #382

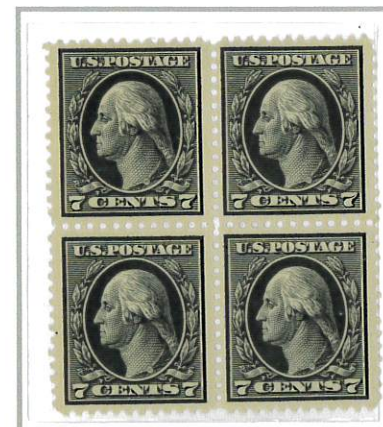
WATERMARKED USPS.  
NEW DESIGNS / DENOMINATION



1 CENTS, #405



2 CENTS, #406



7 CENTS, #407

## 1908 SERIES

WATERMARKED USPS.  
NEW DESIGNS, PERFORATED 12



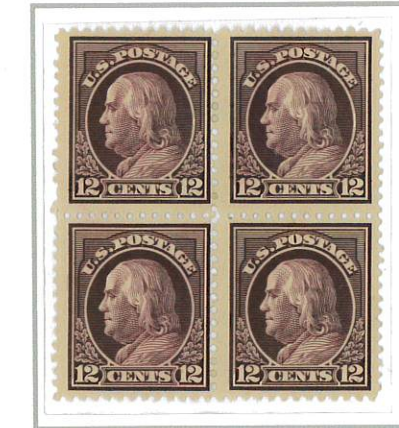
8 CENTS, #414



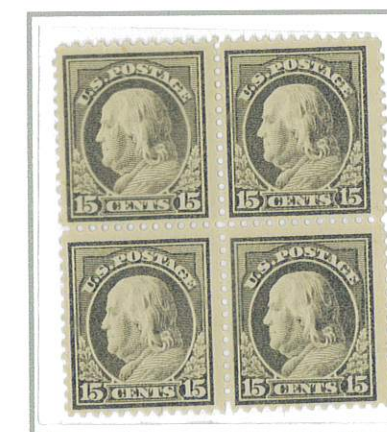
9 CENTS, #415



10 CENTS, #416



12 CENTS, #417



15 CENTS, #418



## 1908 SERIES

WATERMARKED USPS.  
NEW DESIGNS, PERFORATED 12



20 CENTS, #419



30 CENTS, #420



50 CENTS, #421

WATERMARKED USPS.



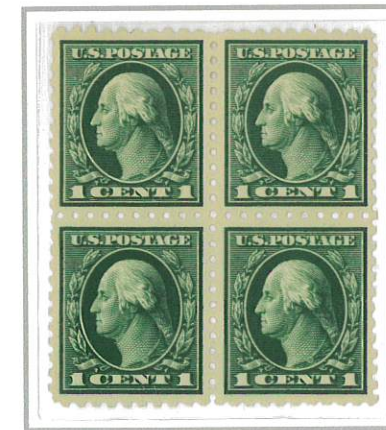
50 CENTS, #422



1 DOLLAR, #423

## 1908 SERIES

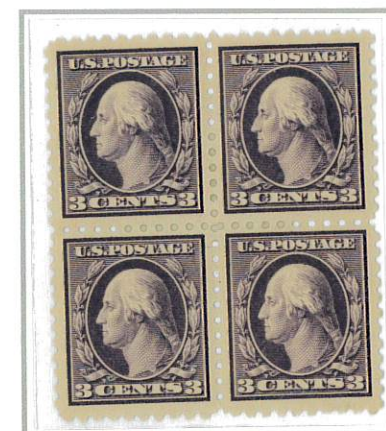
WATERMARKED USPS.  
PERFORATED 10



1 CENT, #424



2 CENTS, #425



3 CENTS, #426



4 CENTS, #427



5 CENTS, #428



6 CENTS, #429



7 CENTS, #430



8 CENTS, #431



## 1908 SERIES

**WATERMARKED USPS.**  
**PERFORATED 10**

### PINK-BACKS

As a result of the World War I German blockade, supplies of manufactured dyes and printing inks became strained. On some 1914 printings of the two and three cents stamps aniline dyes were used which resulted in a strong tinge of pink on the back of the stamps. The embargo was lifted in 1915.



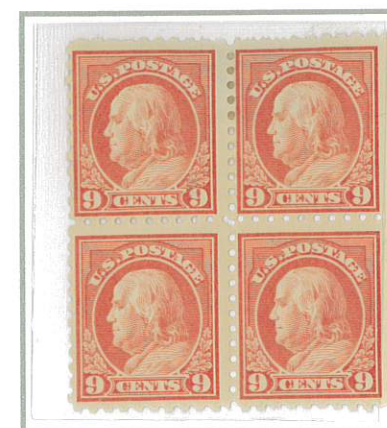
2 CENTS, #425



3 CENTS, #426

## 1908 SERIES

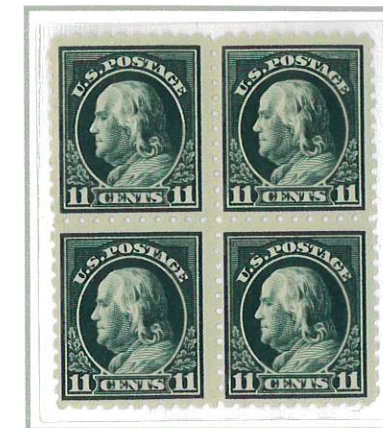
**WATERMARKED USPS.**  
**PERFORATED 10**



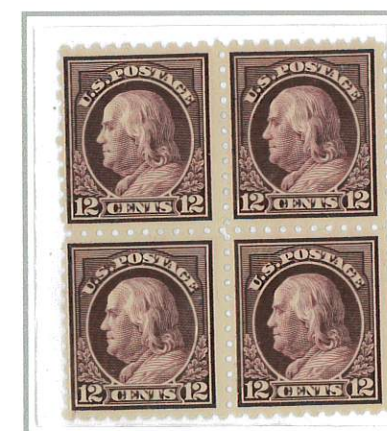
9 CENTS, #432



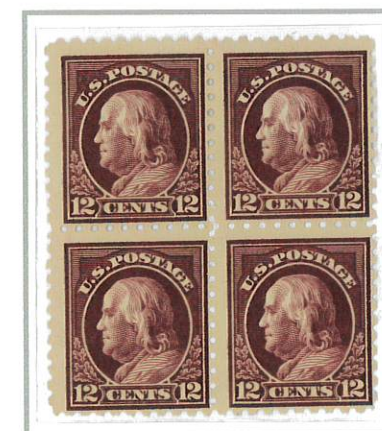
10 CENTS, #433



11 CENTS, #434



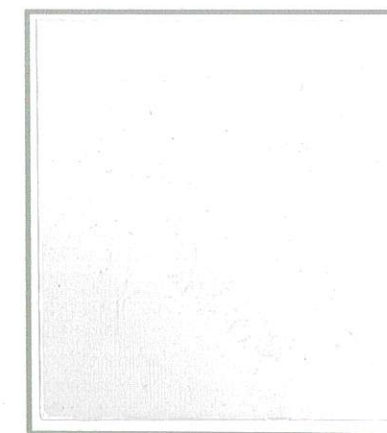
12 CENTS, #435



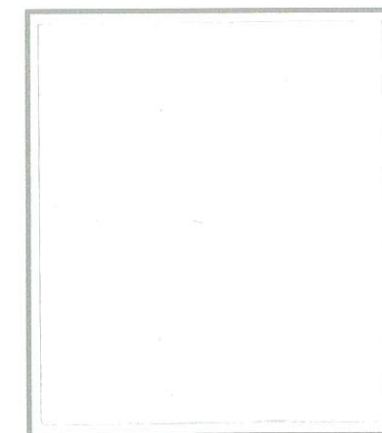
12 CENTS, #435A  
COPPER RED



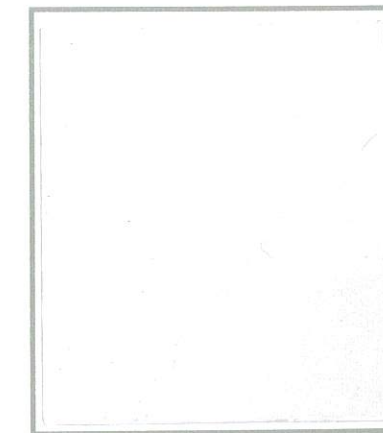
15 CENTS, #437



20 CENTS, #438



30 CENTS, #439



50 CENTS, #440



1908 SERIES

WATERMARKED USPS.  
PERFORATED 10



1 DOLLAR, #460

WATERMARKED USPS.  
FLAT PLATE PRINTS, EXPERIMENTAL PERFORATED 11



2 CENTS, #461

NO WATERMARK  
PERFORATED 10



1 CENT, #462



2 CENTS, #463



3 CENTS, #464



4 CENTS, #465



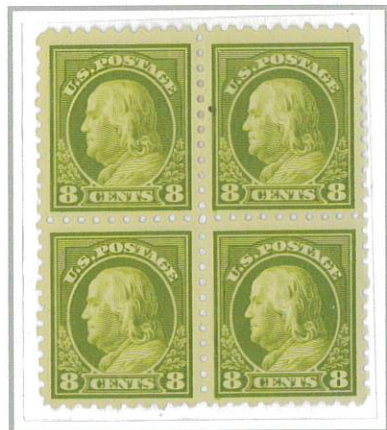
5 CENTS, #466



6 CENTS, #468



7 CENTS, #469



8 CENTS, #470



9 CENTS, #471



1908 SERIES

NO WATERMARK  
PERFORATED 10



10 CENTS, #472



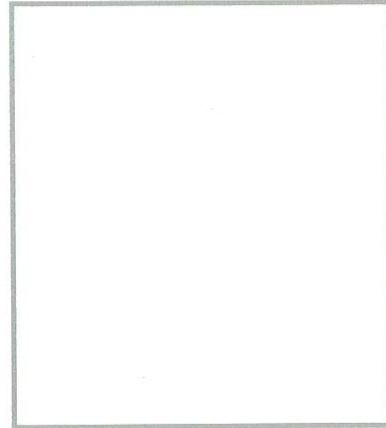
11 CENTS, #473



12 CENTS, #474



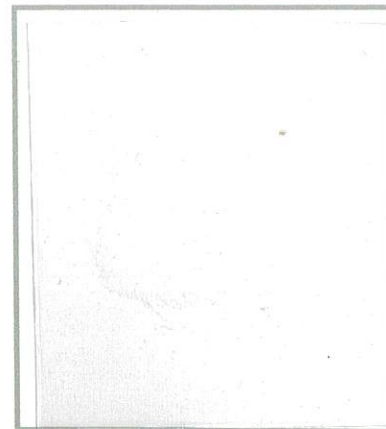
15 CENTS, #475



20 CENTS, #476



50 CENTS, #477



1 DOLLAR, #478



2 DOLLAR, #479



5 DOLLARS, #480

1908 SERIES

NO WATERMARK  
PERFORATED 11



1 CENT, #498



2 CENTS, TYPE I, #499



2 CENTS, TYPE II, ~~#500~~ 499  
I



3 CENTS, TYPE I, #501



3 CENTS, TYPE II, #502



4 CENTS, #503

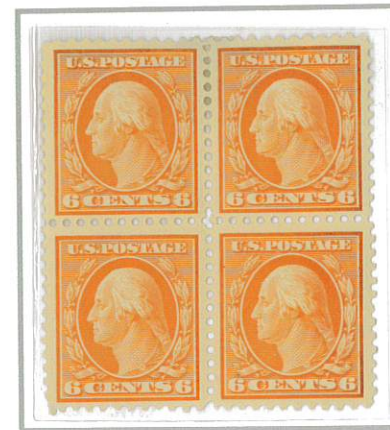


5 CENTS, #504



# 1908 SERIES

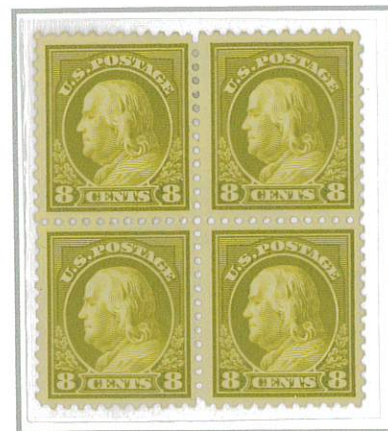
NO WATERMARK  
PERFORATED 11



6 CENTS, #506



7 CENTS, #507



8 CENTS, #508



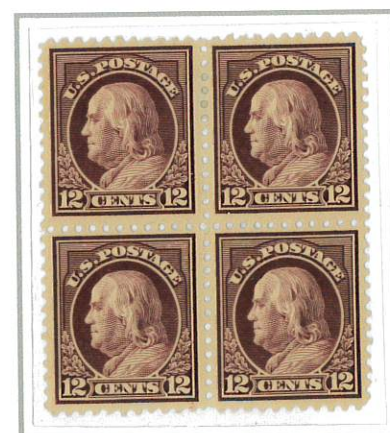
9 CENTS, #509



10 CENTS, #510



11 CENTS, #511



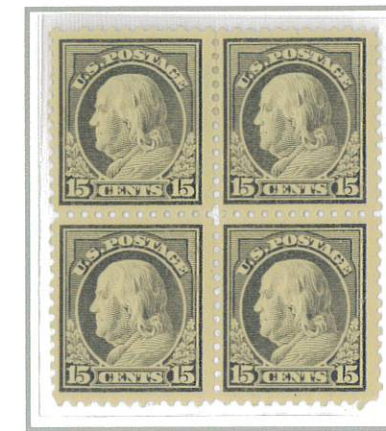
12 CENTS, #512



13 CENTS, #513

# 1908 SERIES

NO WATERMARK  
PERFORATED 11



15 CENTS, #514



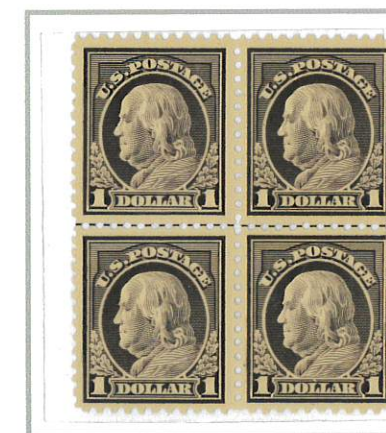
20 CENTS, #515



30 CENTS, #516



50 CENTS, #517



1 DOLLAR, #518

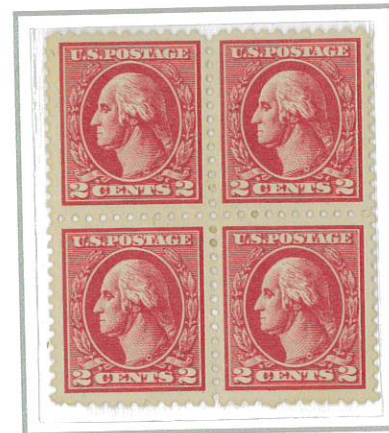


# 1908 SERIES

NO WATERMARK  
OFFSET PRINTS, PERFORATED 11



1 CENTS, #525



2 CENTS, TYPE IV, #526



2 CENTS, TYPE V, #527



2 CENTS, TYPE VA, #528



2 CENTS, TYPE VI, #528A



2 CENTS, TYPE VII, #528B



3 CENTS, TYPE III, #529



3 CENTS, TYPE IV, #530