

1908 SERIES

WATERMARKED USPS.
PERFORATED 12



ONE CENT, #331



TWO CENTS, #332



3 CENTS, #333



4 CENTS, #334



5 CENTS, #335

1908 SERIES

WATERMARKED USPS.
PERFORATED 12



6 CENTS, #336



8 CENTS, #337



10 CENTS, #338



13 CENTS, #339



15 CENTS, #340



50 CENTS, #341



1 DOLLAR, #342

1908 SERIES

WATERMARKED USPS.
BLuish PAPER, PERFORATED 12

These stamps were printed on a special
paper containing 30% rag stock.



ONE CENT, #357



TWO CENTS, #358



3 CENTS, #359



5 CENTS, #361



6 CENTS, #362



10 CENTS, #364



13 CENTS, #365



15 CENTS, #366

All known copies of the four and eight cent stamps on bluish paper came from the
Government Collection in Washington in exchange for other needed values.



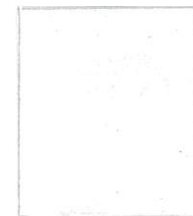
4 CENTS, #357



8 CENTS, #358

1908 SERIES

WATERMARKED USPS.
PERFORATED 12



ONE CENT, #374



TWO CENTS, #375



3 CENTS, #376



4 CENTS, #377



5 CENTS, #378

1908 SERIES

WATERMARKED USPS.
PERFORATED 12



6 CENTS, #379



8 CENTS, #380



10 CENTS, #381



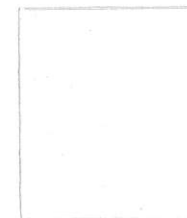
15 CENTS, #382

1908 SERIES

WATERMARKED USPS.
NEW DESIGNS, PERFORATED 12



1 CENT, #405



2 CENTS, #406



7 CENTS, #407

1908 SERIES

WATERMARKED USPS.
NEW DESIGNS, PERFORATED 12



8 CENTS, #414



9 CENTS, #415



10 CENTS, #416



12 CENTS, #417



15 CENTS, #418

1908 SERIES

WATERMARKED USPS.
NEW DESIGNS, PERFORATED 12



20 CENTS, #419



30 CENTS, #420



50 CENTS, #421

WATERMARKED USPS.



50 CENTS, #422



1 DOLLAR, #423

1908 SERIES

WATERMARKED USPS.
PERFORATED 10



1 CENT, #424



2 CENTS, #425



3 CENTS, #426

1908 SERIES

WATERMARKED USPS.
PERFORATED 10



4 CENTS, #427



5 CENTS, #428



6 CENTS, #429



7 CENTS, #430



8 CENTS, #431

1908 SERIES

WATERMARKED USPS.
PERFORATED 10



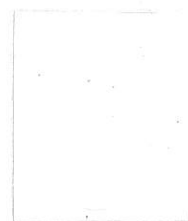
9 CENTS, #432



10 CENTS, #433



11 CENTS, #434



12 CENTS, #435

1908 SERIES

WATERMARKED USPS.
PERFORATED 10



15 CENTS, #437



20 CENTS, #438



30 CENTS, #439



50 CENTS, #440

1908 SERIES

WATERMARKED USPS.
PERFORATED 10



1 DOLLAR, #460

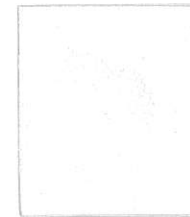
WATERMARKED USPS.
FLAT PLATE PRINTS, EXPERIMENTAL PERFORATED 11



2 CENTS, #461

1908 SERIES

NO WATERMARK
FLAT PLATE PRINTS, PERFORATED 10



1 CENT, #462



2 CENTS, #463



3 CENTS, #464



4 CENTS, #465



5 CENTS, #466

1908 SERIES

NO WATERMARK
FLAT PLATE PRINTS, PERFORATED 10



6 CENTS, #468



7 CENTS, #469



8 CENTS, #470



9 CENTS, #471



10 CENTS, #472



11 CENTS, #473



12 CENTS, #474



1908 SERIES

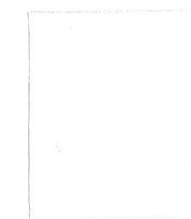
NO WATERMARK
FLAT PLATE PRINTS, PERFORATED 10



15 CENTS, #475



20 CENTS, #476



50 CENTS, #477



1 DOLLAR, #478



2 DOLLARS, #479



5 DOLLARS, #480

1908 SERIES

NO WATERMARK
FLAT PLATE PRINTS, PERFORATED 11



1 CENT, #498



2 CENTS, TYPE I, #499



2 CENTS, TYPE IA, #500

1908 SERIES

NO WATERMARK
FLAT PLATE PRINTS, PERFORATED 11



pink back



3 CENTS, TYPE I, #501



pink back



3 CENTS, TYPE II, #502

1908 SERIES

NO WATERMARK
FLAT PLATE PRINTS, PERFORATED 11



4 CENTS, #503



5 CENTS, #504



6 CENTS, #506



7 CENTS, #507



8 CENTS, #508

1908 SERIES

NO WATERMARK
FLAT PLATE PRINTS, PERFORATED 11



9 CENTS, #509



10 CENTS, #510



11 CENTS, #511



12 CENTS, #512



12 CENTS, #512A

1908 SERIES

NO WATERMARK

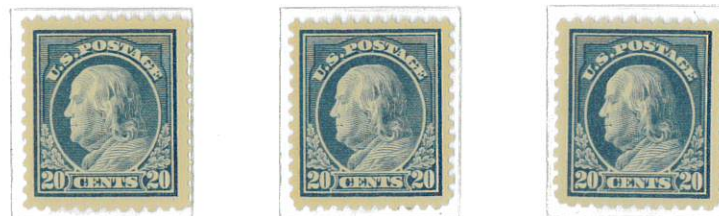
FLAT PLATE PRINTS, PERFORATED 11



13 CENTS, #513



15 CENTS, #514

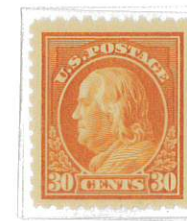


20 CENTS, #515

1908 SERIES

NO WATERMARK

FLAT PLATE PRINTS, PERFORATED 11



30 CENTS, #516



50 CENTS, #517



1 DOLLAR, #518

1908 SERIES

WATERMARKED USPS.
FIRST DESIGN, PERFORATED 11



TWO CENTS, #519

NO WATERMARK
FLAT PLATE PRINTS, PERFORATED 11



2 DOLLARS, #523



2 DOLLARS, #547



5 DOLLARS, #524

1908 SERIES

NO WATERMARK
OFFSET PRINTS, PERFORATED 11



1 CENT, #525



2 CENTS, TYPE IV, #526



2 CENTS, TYPE V, #527

1908 SERIES

NO WATERMARK
OFFSET PRINTS, PERFORATED 11



2 CENTS, TYPE VA, #528



2 CENTS, TYPE VI, #528A



2 CENTS, TYPE VII, #528B

1908 SERIES

NO WATERMARK
OFFSET PRINTS, PERFORATED 11



3 CENTS, TYPE III, #529



3 CENTS, TYPE IV, #530