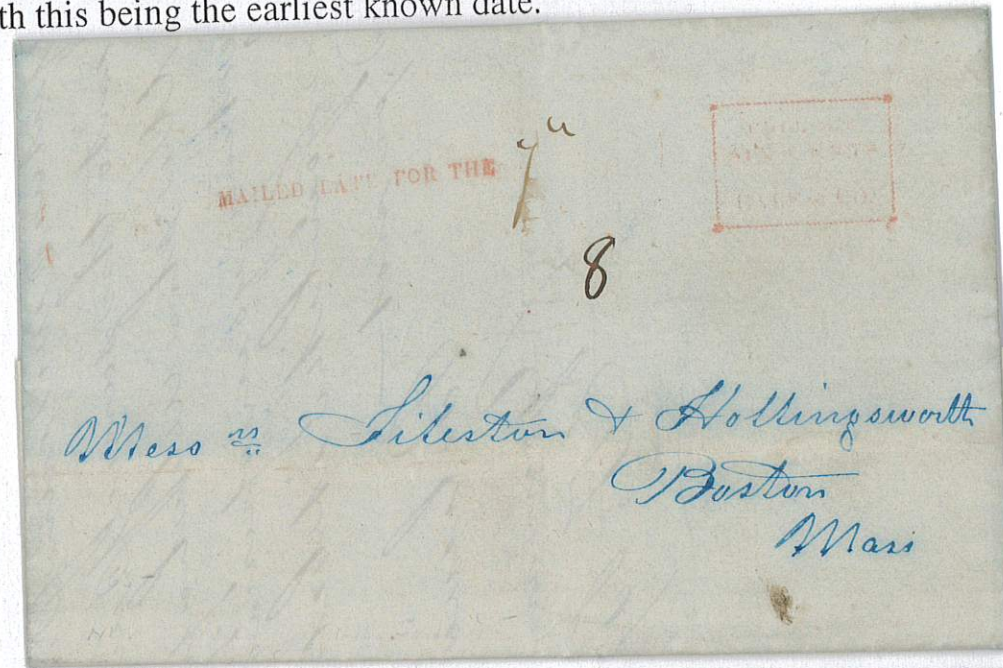
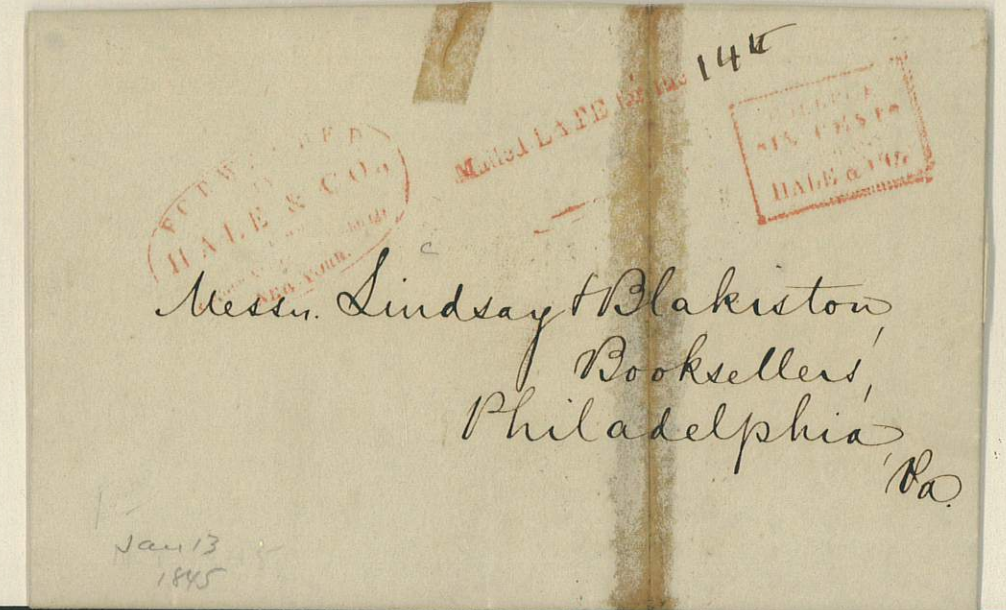


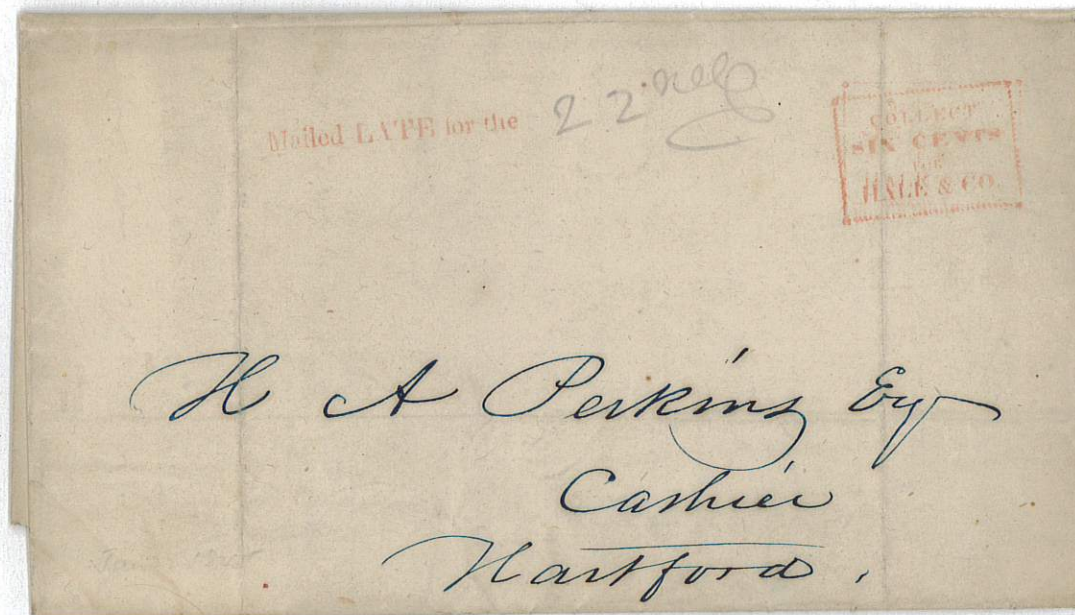
New York City, New York to Boston, Massachusetts dated April 5, 1845. This letter bears a C-3 collect handstamp and a ML-2 "Mailed late for the" handstamp, both in red. Manuscript notations "8" and "7<sup>th</sup>" are also present. This letter arrived after the mails had closed and received the ML-2 and the "7<sup>th</sup>". The "8" indicates local delivery in Boston was requested and would be paid. Only eight ML-2's are known with this being the earliest known date.



New York City, New York to Philadelphia, Pennsylvania dated January 13, 1845. This letter bears a F-29 forwarding handstamp, a C-3 collect handstamp and a ML-3 "Mailed late for the" handstamp, all in red. After the ML-3 is the manuscript notation "14<sup>th</sup>" indicating the letter reached the Hale office after the mail closed on the 14<sup>th</sup> and would be mailed the next day.



New York City, New York to Hartford, Connecticut dated January 22, 1845. This letter bears a C-3 collect handstamp and a ML-3 "Mailed late for the" handstamp, both in red. A manuscript "22<sup>nd</sup>" appears after the ML-3. This letter arrived at Hale's New York office after the mails had closed and was mailed the next day.

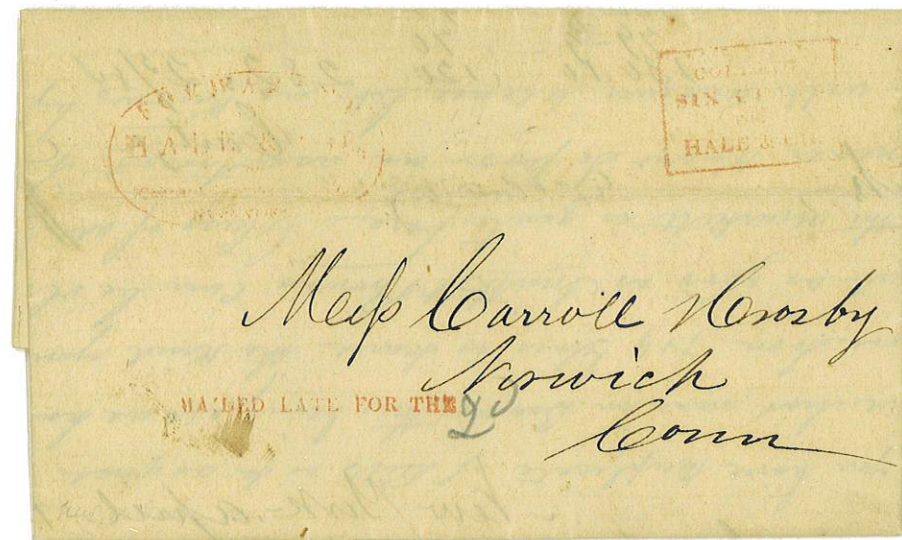


New York City, New York to Boston, Massachusetts dated February 22, 1845. This letter bears a 75L5 and a red ML-3 mailed late for handstamp. Also present are manuscript notations "Single", "Hales" and "22". This letter arrived at the Hale office after the mails had closed and the ML-3 was applied.

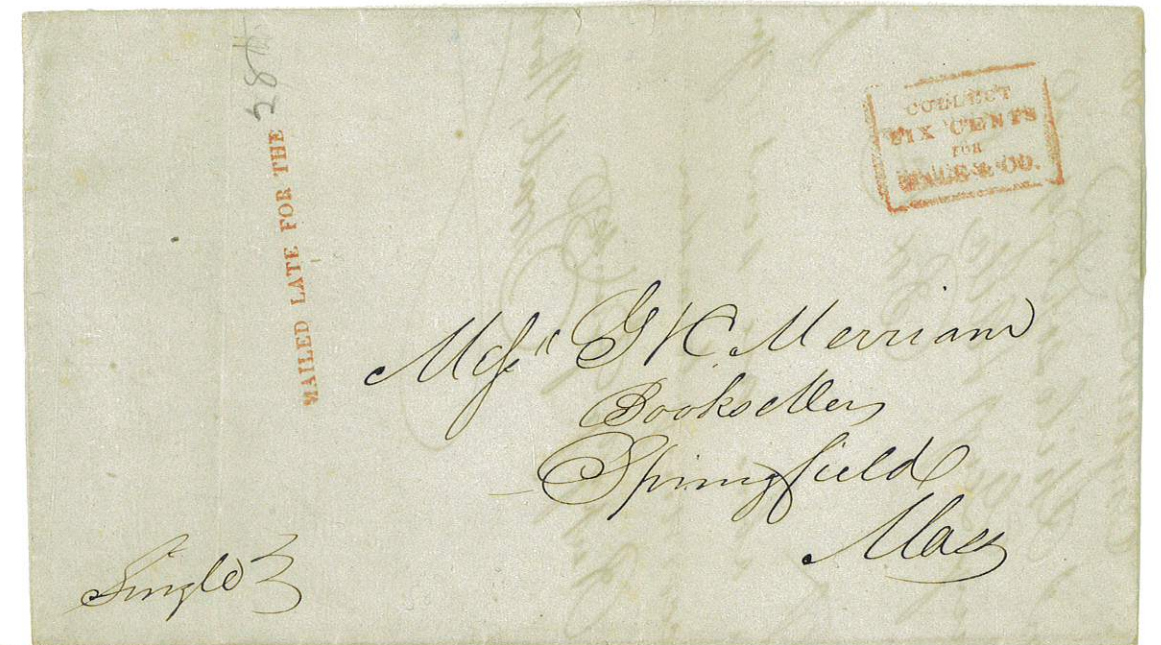




New York City, New York to Norwich, Connecticut dated May 2, 1845. This letter bears a red F-29 forwarding handstamp, a red C-3 collect handstamp and a red ML-2 mailed late hanstamp.



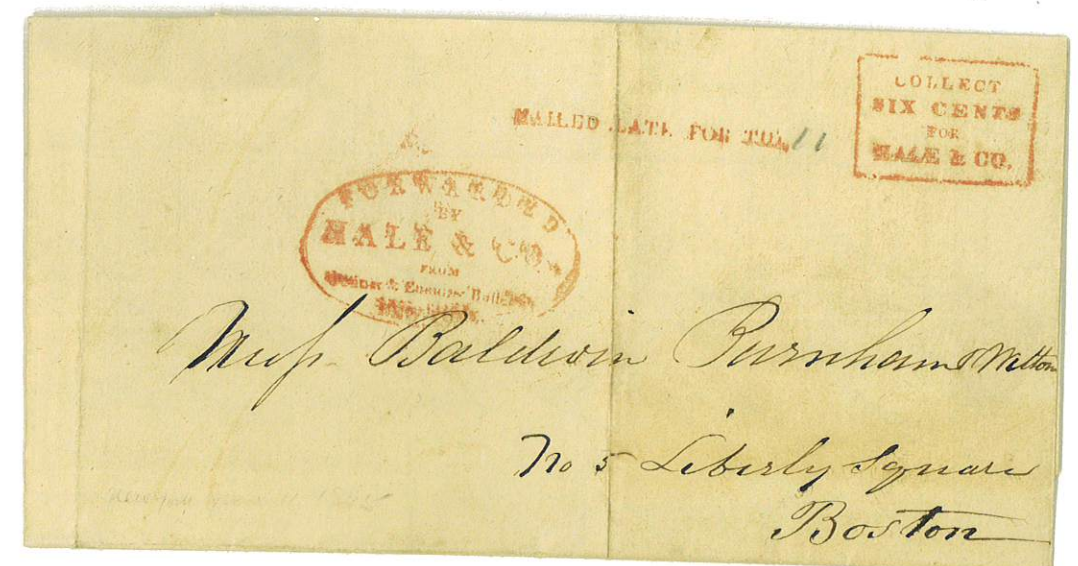
New York City, New York to Springfield, Massachusetts dated May 26, 1845. This letter bears C-3 collect handstamp and a ML-2 "Mailed late for the" handstamp, both in red. Two manuscript notations also appear, "28<sup>th</sup>" after the ML-2 and "Single". This letter arrived at the Hale office after the mail had closed on the 28<sup>th</sup> and was sent out the next day.



New York City, New York to Norwich, Connecticut dated April 24, 1845. This letter bears a red F-29 forwarding handstamp, a red C-3 collect handstamp and a red ML-2 mailed late for handstamp. It also bears the manuscript notation "Hale & Co.".

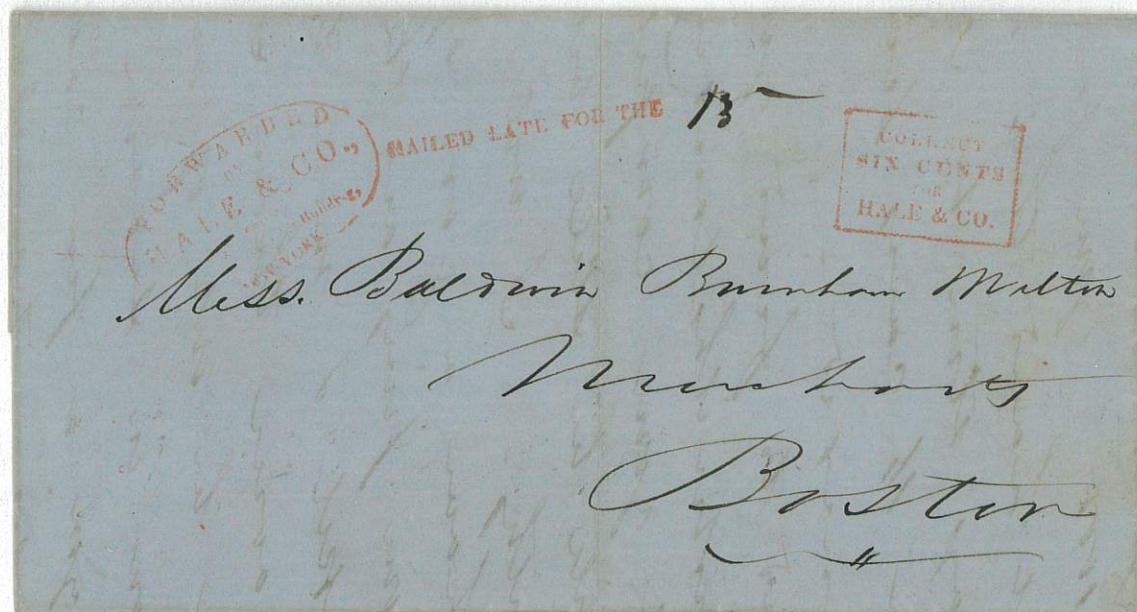


New York City, New York to Boston, Massachusetts dated June 11, 1845. This letter bears a F-29 forwarding handstamp, a C-3 collect handstamp and a ML-2 "Mailed late for the" handstamp, all in red. A manuscript "11" appears after the ML-2 indicating this letter arrived at the Hale office after the mail had closed on the 11<sup>th</sup> and was sent the next day. Only eight ML-2's are known, this being the latest known use.





New York City, New York to Boston, Massachusetts dated May 13, 1845. This letter bears a F-29 forwarding handstamp, a C-3 collect handstamp and a ML-2 "Mailed late for the" handstamp, all in red. After the ML-2 is the manuscript notation "13<sup>th</sup>". This letter arrived at the Hale office after the mail closed and was sent out the next day. Just eight ML-2's are known.



New York City to Providence, Rhode Island dated May 14, 1845. It bears a 75L5, a red D-29 forwarding handstamp, a red P-8 paid handstamp and a red ML-2 Mailed late For handstamp. It also bears a "14" manuscript notation.

