







INTERNATIONAL PHILATELIC EXHIBITION, OCT. 16<sup>TH</sup> TO 23<sup>RD</sup> 1926  
18770



18770

18770

NEW

YORK

18770

N.Y.

U.S.A.

83

3500



#85



Sale # .....

Lot No.

2450

*Daniel J. Wallach & Co., Inc.*



Cat. No. .... 627

Cat. Val. .... 60.00

365  
44-

570



245



314  
UL  
CORN  
LA  
1750



304



390



300  
F-VF  
LH  
110



130  
30

350



350

13.75

351  
1075



52

376  
VF  
H  
1350



379  
375  
382  
1300



386



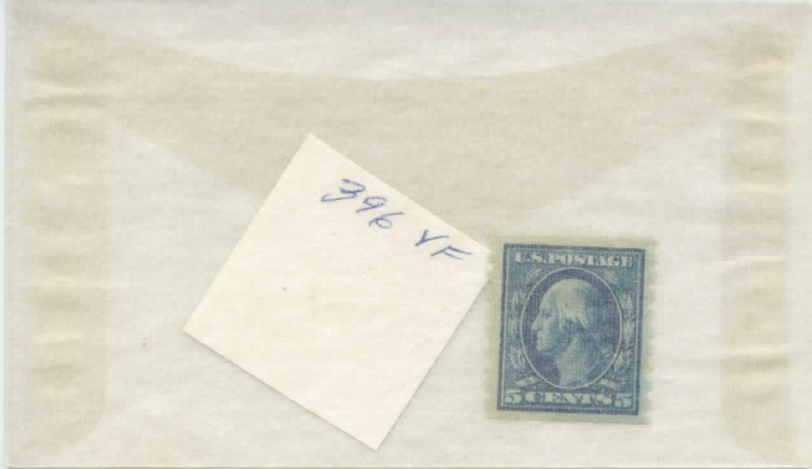
395  
VF  
LH  
1511



378  
LH  
1500









215  
425



250

60



280 b  
VF



250

375



TYPE I  
X

252

274



305

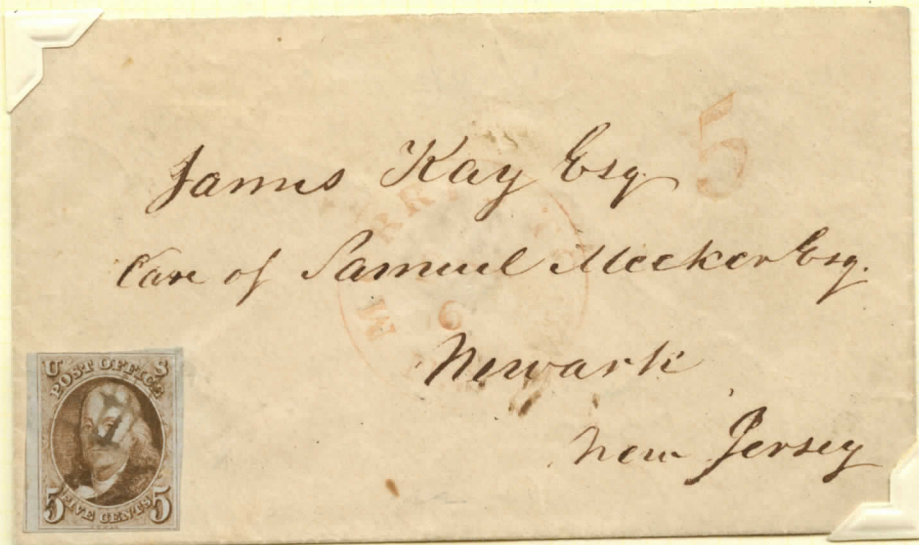
225







JERSEY CITY NJ



MORRISTOWN NJ

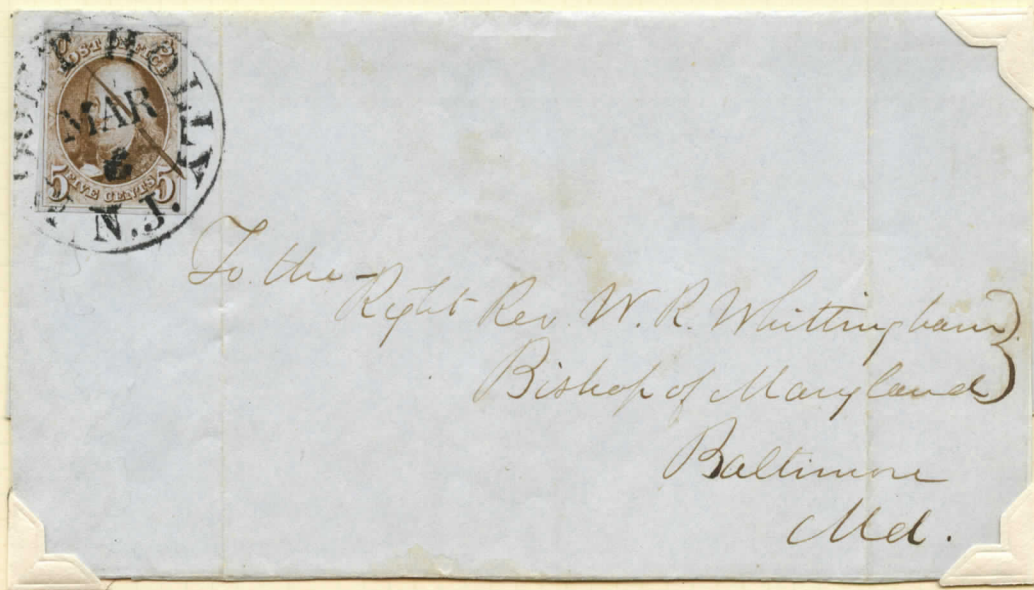


NEW BRUNSWICK NJ





TRENTON NJ



MOUNT HOLLY NJ



HAMBURG, NJ







67





# POSTAGE

Printed by the National Bank Note Co.

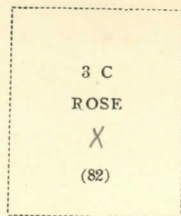
1867

Same Designs as 1861-66 Issues

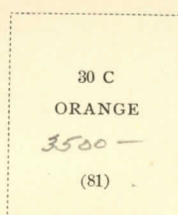
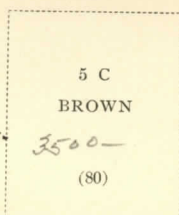
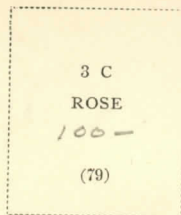
Embossed with Grills of Various Sizes

Grill with Points Up

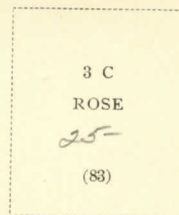
B. Grill measuring about 18x15 mm.



A. Grill covering the entire stamp

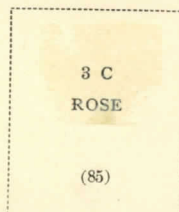
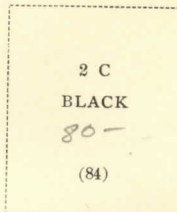


C. Grill measuring about 13x16 mm.

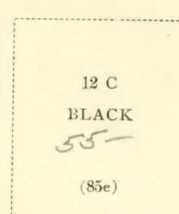
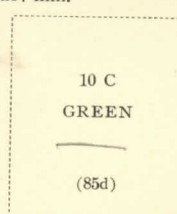
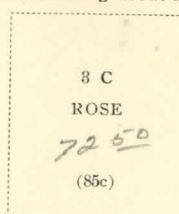
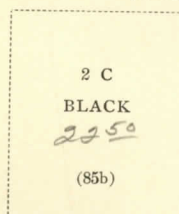
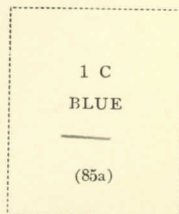


Grill with Points Down

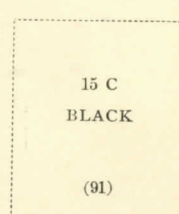
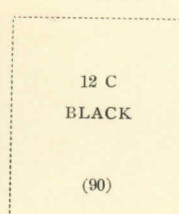
D. Grill measuring about 12x14 mm.



Z. Grill measuring about 11x14 mm.

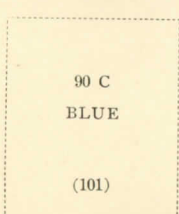
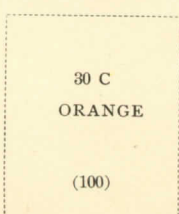


E. Grill measuring about 11x13 mm.



1867

F. Grill measuring about 9x13 mm.

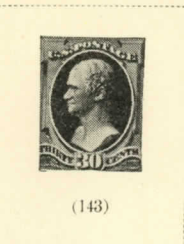
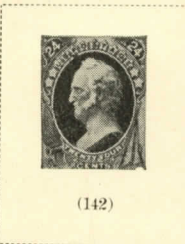
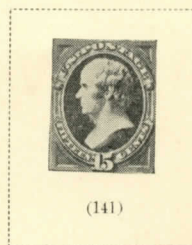
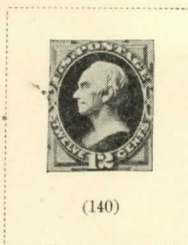
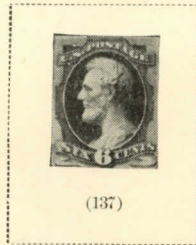


# POSTAGE

Printed by the National Bank Note Co.

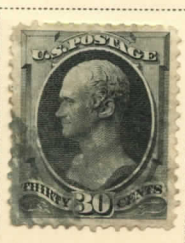
1870-71

With Grill



1870-71

Without Grill





# POSTAGE

Printed by the American Bank Note Co.

## Columbian Exposition Issue

1893







# POSTAGE

Trans-Mississippi Exposition Issue

Watermarked USPS

1898



(289)



(292)



(293)

1908 - 09  
PERF 12



334

335

336



338



341





# POSTAGE

Watermarked **USPS**

1908-09

On Bluish Experimental Paper


		3 C DEEP VIOLET (359)	4 C ORANGE BROWN (360)
		5 C BLUE (361)	
8 C OLIVE GREEN (363)	10 C YELLOW (364)	13 C BLUE GREEN (365)	15 C PALE ULTRAMARINE (366)

1909

Lincoln Memorial Issue

			Bluish Paper 2 C CARMINE (369)
---	---	--	---

Alaska-Yukon Issue

	Imperforate 2 C CARMINE (371)
---	--

Hudson-Fulton Issue

	
---	--



1917 ERROR







K15

K16

K17

K18