



Mr Marx,  
Foreign Office,  
City

1 cent yellow 1894

Letter mailed in Honolulu to the Foreign Office with stamp tied to cover by 25mm single circle townmark "HONOLULU H.I." in black (#233.528). According to W.J. Davey (M-H p.307) this mark which had no date, was in use between Dec. 1898 and Dec. 1899 and generally for parcel post, newspapers, etc. only.

Cover belongs to the Fourteenth Hawaiian Postal Period (Aug. 12, 1898 to Jun. 13, 1900) when single-rate city letters paid 1 cent.

CASTLE & COOKE, LTD.  
HONOLULU, H. I.



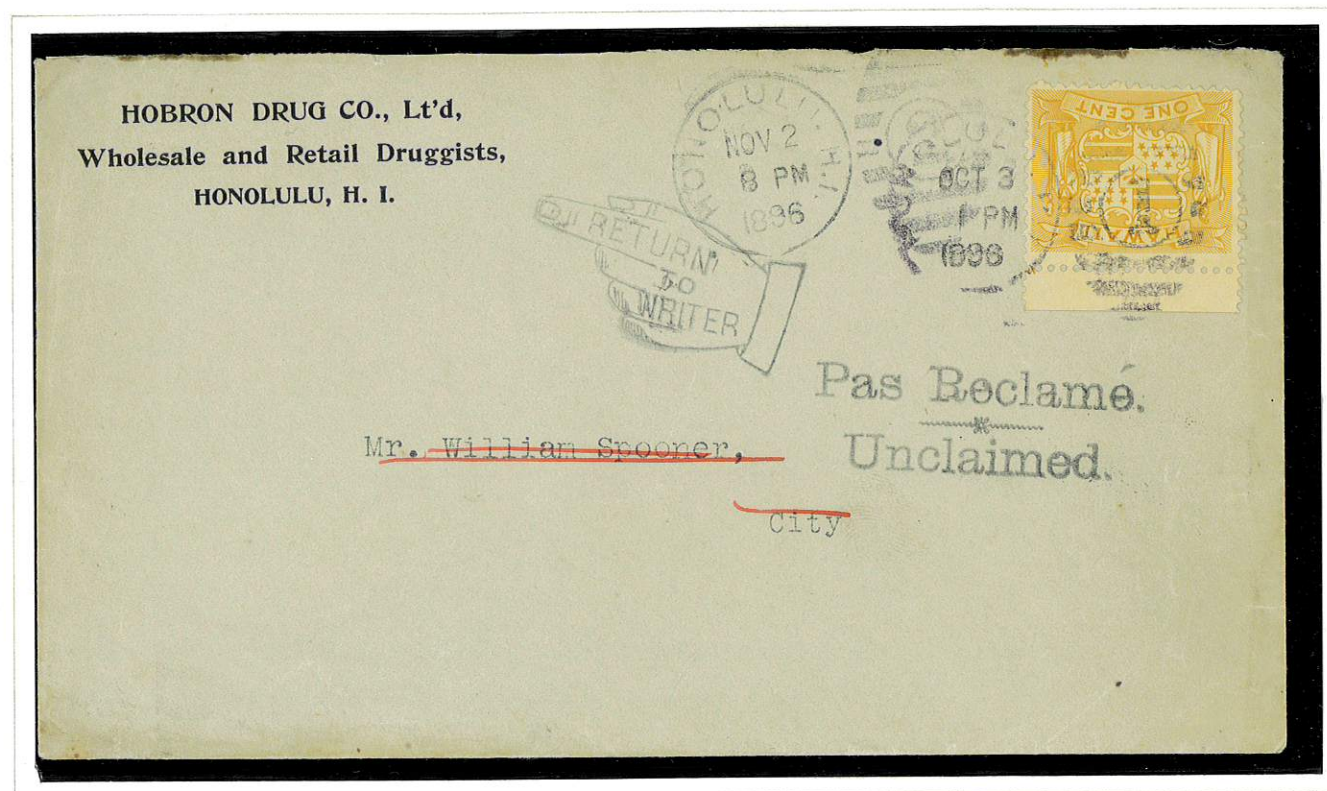
Kilauea Sugar Co.  
Kilauea  
Kauai

1 cent yellow on thick white paper 1894-97

Letter from Honolulu to Kilauea on Kauai with stamp cancelled by what appears to be a three or four-circle target in black. The back of the cover is marked with the 30mm double-lined outer and single-lined inner circles townmark "KILAUEA, FEB 11 KAUAI." (#281.01) in purple (note the omission of the year).

The letter belongs most probably to the Thirteenth Hawaiian Postal Period (Jan. 1, 1882 to Aug. 11, 1898). In this period the official single rate within the Kingdom was 2 cents. However, according to J.K. Bash (M-H p.89): "There is some evidence that this rate was subsequently reduced to 1¢ per half ounce. An unofficial printed reference to this reduced rate has been noted, and occasional interisland covers bearing 3¢ postage are found."

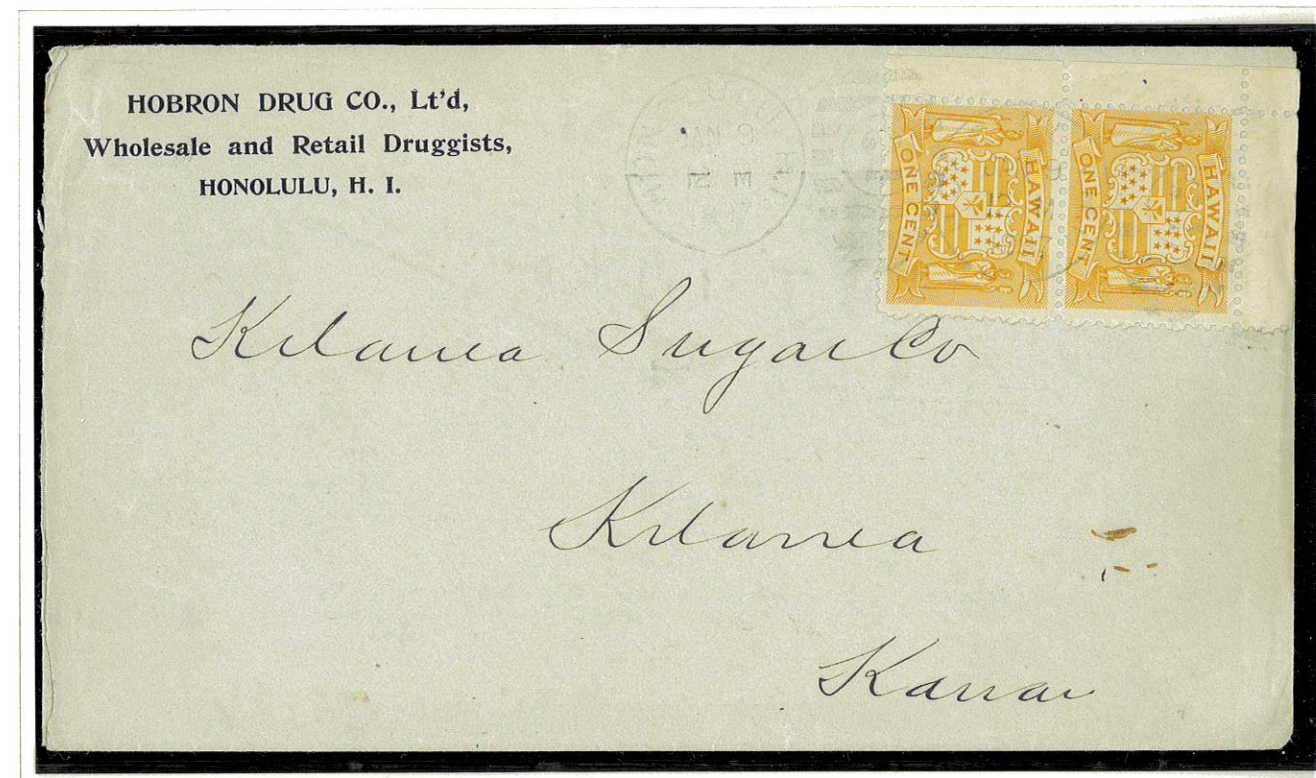




1 cent yellow on thick white paper 1894-97

Honolulu city letter unclaimed by addressee and returned, after 30 days, to sender. Stamp is tied to the cover by 23mm single circle townmark "SAN FRANCISCO H.I. OCT 3 1PM 1896" with oval bar killer, numeral 1 (#231.7). The front is marked with a second 23mm single circle townmark "HONOLULU H.I. NOV 2 8PM 1896" with oval bar killer, numeral 2 (#231.82) and the service markings of the Dead Letter Office's pointing hand "Return to Writer" and the "Pas Reclame Unclaimed" with ornament (#755 and #767) in black.

The cover belongs to the Thirteenth Hawaiian Postal Period (Jan. 1, 1882 to Aug. 11, 1898), when the city letter rate was 1 cent.



1 cent yellow on thick white paper 1894-97 (2)

Letter from Honolulu to Kilauea on Kauai with stamps tied to cover by 23mm single circle townmark "HONOLULU H.I. JAN 9 12M 1897" with oval bar killer, numeral 2 (#231.82) in black. The back is marked with 32mm double-lined outer and single-lined inner circles townmark "KILAUEA JAN 13 1897 KAUAI" (#282.011) in purple.

The letter belongs to the Thirteenth Hawaiian Postal Period (Jan. 1, 1882 to Aug. 11, 1898) when the interisland single rate was 2 cents.

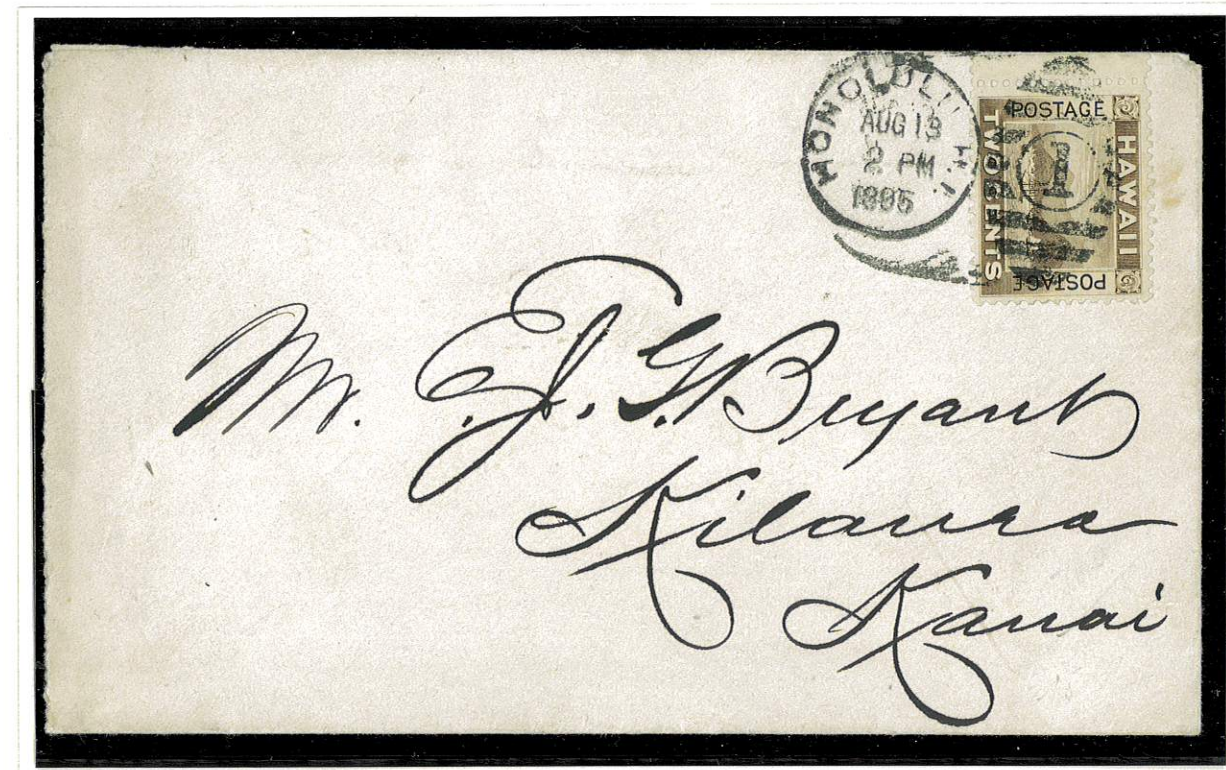




1 cent gray green on thick white paper 1899 (5)

Single rate letter from the island of Hawaii via Honolulu to New York with the stamps tied to cover by 22mm four-circle target (#131) and 27mm single-circle townmark " ? JUL ? 1899 HAWAII" (#235.01), both in purple, and 24mm single-circle townmark "HONOLULU H.I. AUG 2 2PM 1899" with oval killer of bars with solid sides, numeral 1 (#232.92) in black. The back is marked with two New York townmarks of Aug. 8 and 16, 1899. The latter with "Paid all".

The cover belongs to the Fourteenth Hawaiian Postal Period (Aug. 12, 1899 to June 13, 1900) when single rate to the U.S. was 5 cents. It should be noted that while the sender's address is given as Honolulu, the purple townmark indicates that the letter was mailed from a post-office on the island of Hawaii. Townmark #235.01 (or #253.01 with which it is frequently confused), always in purple, was extensively used in many locations in 1899-1900, but not in Honolulu. This is further borne out by the July date.



2 cents brown on thick white paper 1894-97

Letter from Honolulu to Kilauea on Kauai with stamp tied to cover by 23mm single circle townmark HONOLULU H.I. AUG 18 2PM 1895" with oval killer of bars, numeral 1 (#231.7) in black. The back is marked with 30mm double-lined outer and single-lined inner circles townmark "KILAUEA, AUG 14 1895 KAUAI." (#281.01) in purple.

Letter belongs to the Thirteenth Hawaiian Postal Period (Jan. 1, 1882 to Aug. 11, 1898) when interisland single rate was 2 cents.



2 cents brown on thick white  
paper 1894-97 (3)



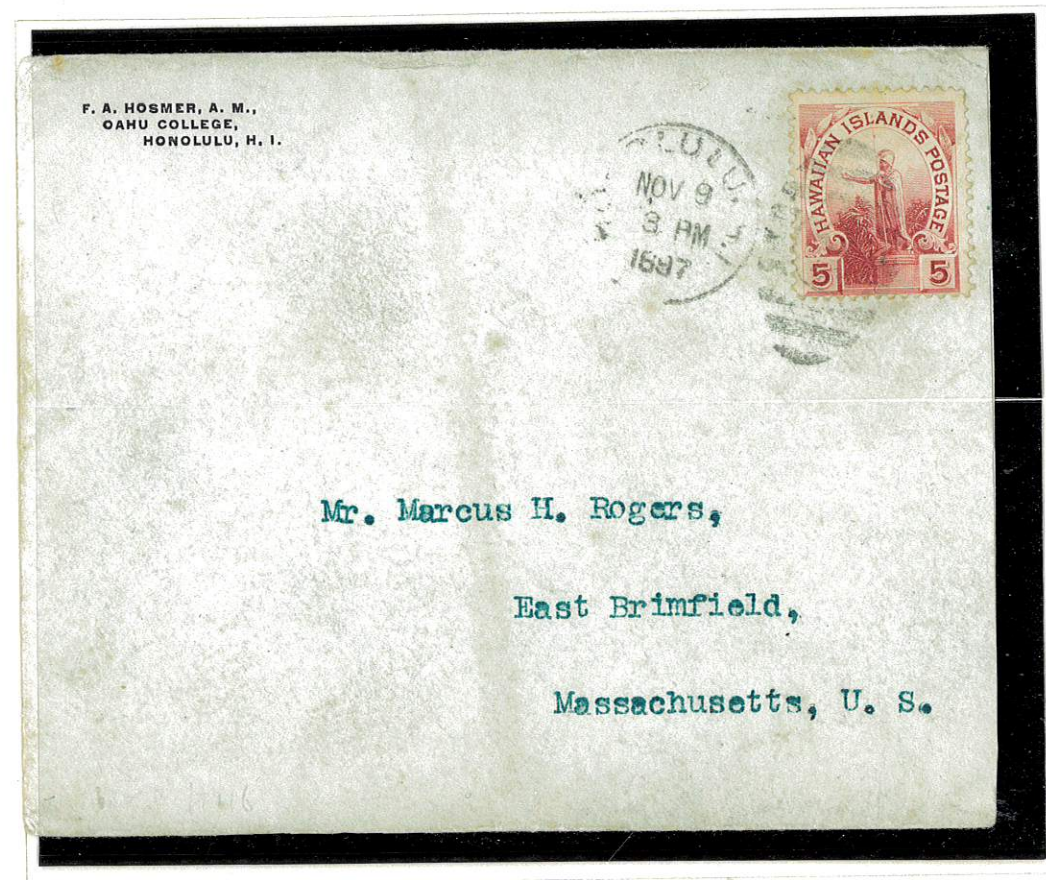
KILAUEA SUGAR CO.  
KILAUEA,  
KAUAI.

FROM  
WM. G. IRWIN & CO., (Limited.)  
Honolulu, H. I.

Triple rate letter  
from Lihue to Kilauea on Kauai with stamps  
tied to cover by 27mm  
single-lined outer and single-lined inner circles town-  
mark "LIHUE, JUL 15. 98 KAUAI."  
(#272.614) in blue. The back is  
marked with 33mm double-lined outer  
and single-lined inner circles town-  
mark "KILAUEA, JUL 20 1898 KAUAI."  
(#282.011) in purple.

Letter belongs to the Thirteenth Hawaiian  
Postal Period (Jan. 1, 1882 to Aug. 11, 1898)  
when the interisland triple rate was 6 cents.





5 cents carmine on thick white paper 1894-96

Letter from Honolulu to Massachusetts with stamp tied to cover by 23mm single circle townmark "HONOLULU H.I. NOV 9 3PM 1897" with oval killer of bars, numeral 2 (#231.82) in black. The back is marked with San Francisco and East Brimfield, Mass. townmarks.

The letter belongs to the Thirteenth Hawaiian Postal Period (Jan. 1, 1882 to Aug. 11, 1898) when single rate to the U.S. was 5 cents.



2 cents light carmine on thick white paper 1894

Letter mailed in Lahaina, Maui with stamp tied to cover by 20mm four-circle target (#131) in purple and front marked with 29mm double-lined outer circle townmark "LAHAINA JUN 13 1900 MAUI" (#255.01) also in purple.

The cover belongs to the Fourteenth Hawaiian Postal Period (Aug. 12, 1898 to Jun. 13, 1900) when the interisland single rate was 2 cents.

Note that the letter was mailed on the last day of the last postal period in which Hawaiian stamps were still valid.

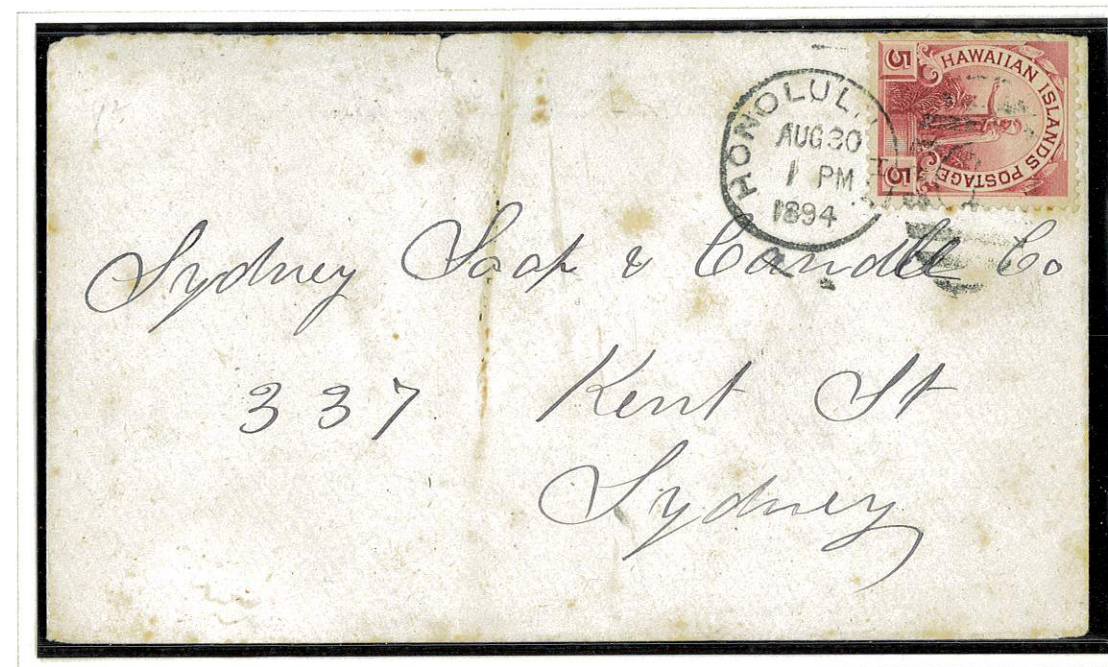




5 cents carmine on thick white paper 1894-96

Letter from Honolulu to Canada with stamp tied to cover by 23mm single circle townmark "HONOLULU H.I. MAR 5 6PM 1897" with oval killer of bars, numeral 2 (#231.82) in deep blue (note color). Front is marked with ship's name "SS Zealandia". Back is marked with San Francisco (Paid all) and Victoria, B.C. townmarks.

Letter belongs to the Thirteenth Hawaiian Postal Period (Jan. 1, 1882 to Aug. 11, 1898) when single rate to the U.S., Canada and Mexico was 5 cents.



5 cents carmine on thick white paper 1894-96

Letter from Honolulu to Sydney with stamp tied to cover by 23mm single circle townmark "HONOLULU H.I. AUG 30 1PM 1894" with oval killer of bars, numeral 1 (#231.7) in black. The back is marked with a townmark that could be that of Sydney, N.S.W.

The letter belongs to the Thirteenth Hawaiian Postal Period (Jan. 1, 1882 to Aug. 11, 1898). In this period single rate to "the Australian Colonies" was 12 cents. The insufficient 5 cents postage of the cover may be explained if (1) the Sydney of the address was not Sydney, N.S.W. but a locality within the U.S., Canada or Mexico, (2) the letter was not forwarded to Sydney, N.S.W. but returned to the sender for lack of postage, or (3) the Hawaiian postal authorities by oversight forwarded the letter to Sydney, N.S.W. in spite of insufficient postage. Of the three possibilities, the third appears the most likely.





5 cents carmine on thick white paper 1894-96 (2)

Double rate letter from Honolulu to California with stamps tied to cover by 23mm single circle townmark "HONOLULU H.I. MAR 24 8AM 1898" with oval killer of bars, numeral 2 (#231.82) in black. Back is marked with three-straight-lines townmark "SAN FRANCISCO CALA. APR 1 11AM '98" (#413.11) and Golden Gate, Cal. townmark.

The letter belongs to the Thirteenth Hawaiian Postal Period (Jan. 1, 1882 to Aug. 11, 1898) when double rate to the U.S. was 10 cents.



5¢ carmine and 10¢ yellow green on thick white paper 1894

Single rate registered letter from Honolulu to California with stamps tied to the cover by 20mm four-circle target (#131) in purple, and front of cover marked with 29mm single-lined outer and inner circles townmark "HONOLULU JUL 12 1894 HAWAII" (#274.01) in purple and registration marking 18mm "R" (#701) also in purple. The back is marked with sender's stamp (Honolulu Stamp Co.) and San Francisco registration mark in purple.

Cover belongs to the Thirteenth Hawaiian Postal Period (Jan. 1, 1882 to Aug. 11, 1898) when a registered single-rate letter to the U.S. paid 15 cents.





5 cent carmine and 12 cent blue 1894

Letter from Honolulu to Madeira with stamps tied to cover by 23mm single circle townmark "HONOLULU H.I. JUL 24 2PM 1896" with oval bar killer, numeral 1 (#231.7) in black. The back is marked with Lisbon's and Funchal's townmarks.

Cover belongs to the Thirteenth Hawaiian Postal Period (Jan. 1, 1882 to Aug. 11, 1898). Single rate to countries belonging to the Postal Union was 10 cents. The 17 cents franking would indicate that Madeira was not a member of the Union and required additional postage.



5 cents blue on thick white paper 1899

Letter from Maui via Honolulu to New York with stamp tied to cover by 30mm double-lined outer and single-lined inner circles Maui townmark (#281.011) in purple and 24mm single circle townmark "HONOLULU H.I. JAN 8 7AM 1900" with oval killer of bars with solid sides, numeral 1 (#232.92) in black. Back is marked with San Francisco and New York townmarks.

Cover belongs to the Fourteenth Hawaiian Postal Period (Aug. 12, 1898 to June 13, 1900) from the annexation of Hawaii to the U.S. until the Hawaiian stamps were declared invalid. Single rate to the U.S. was 5 cents.





5 cents blue 1899 - strip of five

Letter from Kilauea on Kauai to San Francisco with the stamps tied to the cover by 33mm double-lined outer and single-lined inner circles townmark "KILAUEA ? KAUAI" (#282.011) in purple. The front is marked with 24mm single circle townmark "HONOLULU H.I. AUG 13 6AM 1899" with oval bar killer, numeral 1 (#232.92) and the back with San Francisco townmark.

Cover belongs to the Fourteenth Hawaiian Postal Period (Aug. 12, 1898 to June 13, 1900), when the single rate to the U.S. was 5 cents. As the affixed postage is 25 cents, the letter was either five times single rate or 2½ oz., or was franked for philatelic purposes. Since mailing date was Aug. 13, 1899 and the 5 cents blue was issued early in August, the latter explanation seems more likely. It is even possible that this is a first day cover.



5 cents blue on thick white paper 1899

Letter from Honolulu to Austria with stamp tied to cover by 24mm single circle townmark "HONOLULU H.I. DEC 5 2PM 1899" with oval bar killer with solid sides, numeral 1 (#232.92) in black. Back is marked with San Francisco and Amstetten, Austria townmarks.

Cover belongs to the Fourteenth Hawaiian Postal Period (Aug. 12, 1898 to June 13, 1900) when single rate to countries belonging to the Universal Postal Union was 5 cents.





10 cents yellow green on thick white paper 1894

Letter mailed in Honolulu to Massachusetts with stamp tied to cover by 23mm single circle townmark "HONOLULU H.I. APR 18 10AM 1896" with oval killer of bars, numeral 2 (#231.82) in black. The back is marked with San Francisco and Boston townmarks.

The cover belongs to the Thirteenth Hawaiian Postal Period (Jan. 1, 1882 to Aug. 11, 1898) when single rate postage to the U.S. was 5 cents. As letter was franked with 10 cents, it was likely double-rate.

Note sender's address in Micronesia. The letter could possibly have been handed to the captain of a passing ship who mailed it in Honolulu.



10 cent yellow green 1894 (2)

Registered letter from Honolulu to New Zealand with stamps tied to cover by 29mm single-lined outer and inner circles townmark HONOLULU DEC 20 1895 HAWAII" (#274.01) in red and front marked with registration marking 18mm "R" (#701) also in red. The back is marked with Christchurch's townmark in black.

Cover belongs to the Thirteenth Hawaiian Postal Period (Jan. 1, 1882 to Aug. 11, 1898). The 20 cents franking paid for single rate (10 cent) and registry fee (10 cents).





12 cent blue 1894

Registered letter from Honolulu to Waimea, Kauai with stamp tied to cover by 29mm single-lined outer and inner circles townmark "HONOLULU JAN 24 1899 HAWAII" (#274.01) in red and front marked with the usual registration number in red but without the "R".

Cover belongs to the Fourteenth Hawaiian Postal Period (Aug. 12, 1898 to Jun. 13, 1900). The 12 cent franking paid for interisland single rate (2 cent) and registry fee (10 cent).



1 cent yellow, 2 cent brown (2) and 5 cent carmine 1894

Letter from Hilo to California with stamps tied to cover by 26mm single-lined outer and inner circles townmark "HILO APR 22 97 HAWAII" (#271.035) in black. Front is marked with 24mm single circle townmark "HONOLULU H.I. APR 24 7AM 1897" (#232.02) in black and the back with San Francisco (#413.35) and Oakland townmarks in black.

Cover belongs to the Thirteenth Hawaiian Postal Period (Jan. 1, 1882 to Aug. 11, 1898). The 10 cents franking indicates that the letter was double-rate.

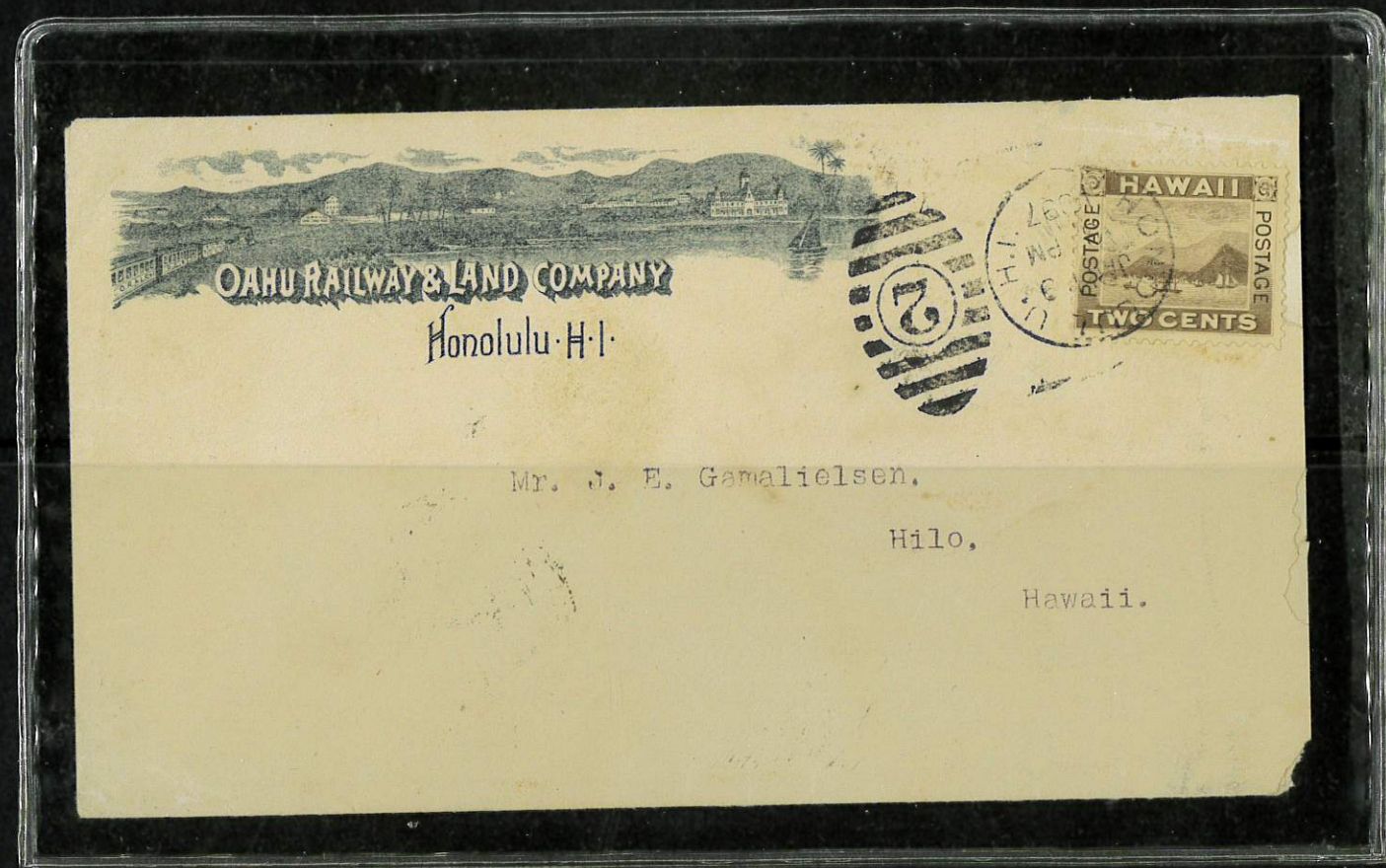




1 cent gray green 1899 (2)

Part of letter from Honolulu to Hanalei on Kauai with stamps tied to cover by 23mm single circle townmark "HONOLULU H.I. FEB 26 1PM 1900" with oval bar killer, numeral 2 (#231.82). The back is marked with 27mm double-lined outer circle townmark "HANALEI, 2 MAR 1900 KAUAI" (#253.01) in purple.

The letter belongs to the Fourteenth Hawaiian Postal Period (Aug. 12, 1898 to June 13, 1900), when domestic single rate was 2 cents.





WILLIAM E. TAYLOR, M.D.  
HONOLULU.



E. B. Treat & Co  
241 - 243. West 23<sup>rd</sup> St  
New York City  
U. S. of America

Dr. Williams



Wm<sup>r</sup> Martin & Robertson  
Victoria  
B.C.