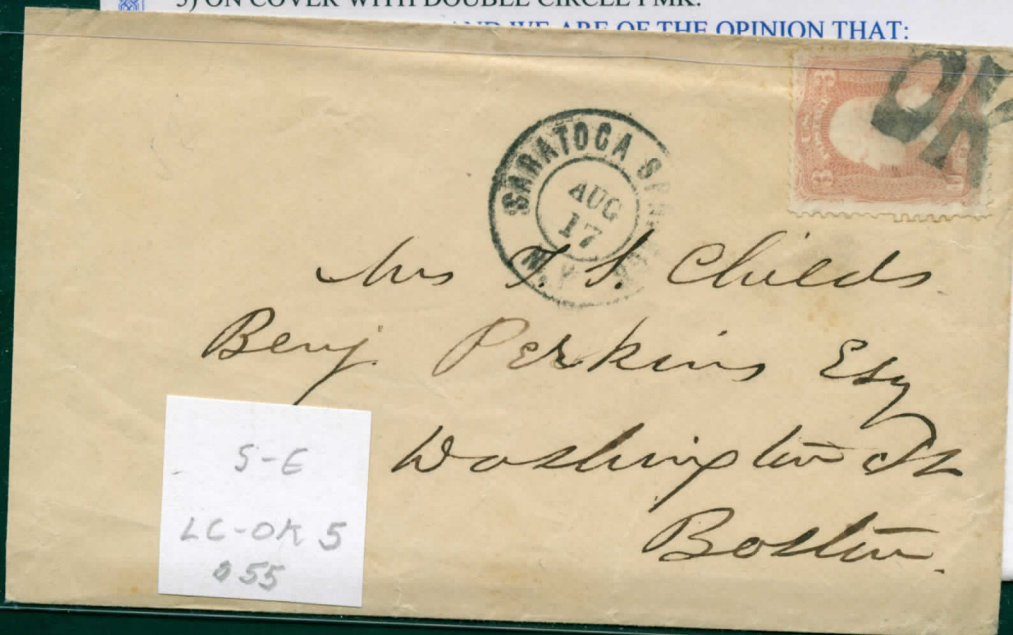


SINGLE, TIED BY "OK" CANCEL OF SARATOGA SPRINGS, N.Y. (S-E LC-OK 5) ON COVER WITH DOUBLE CIRCLE PMK.

AND WE ARE OF THE OPINION THAT:

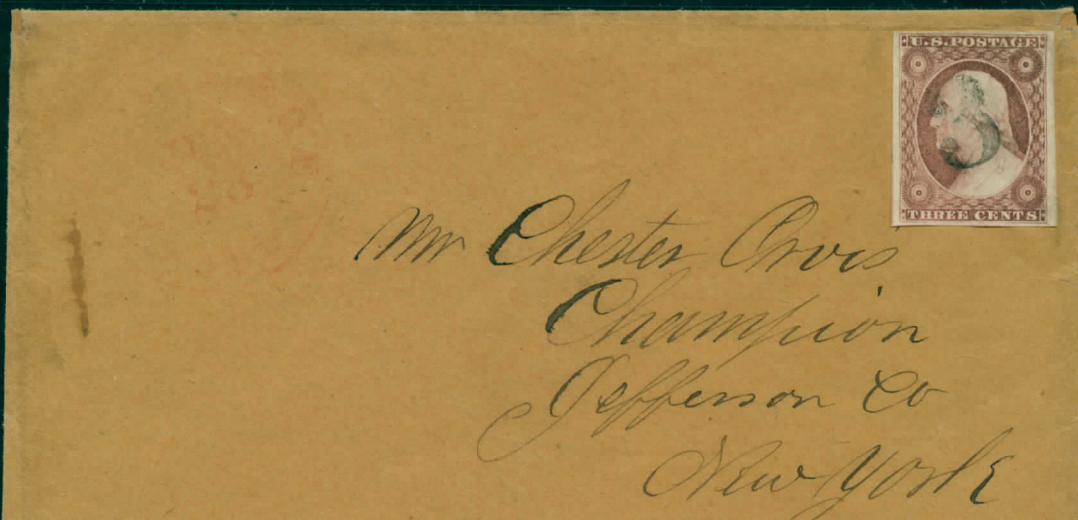
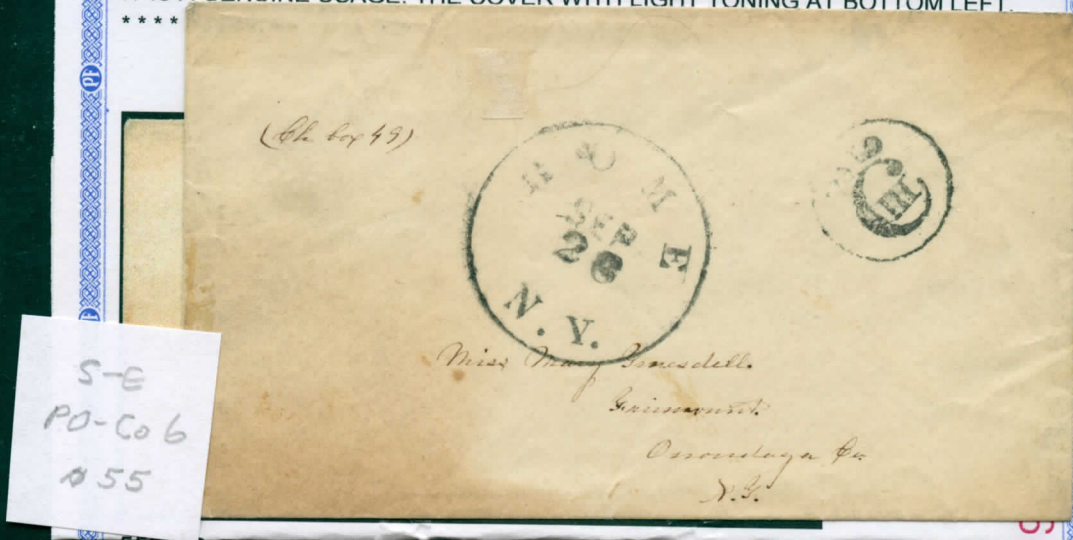


STAMPLESS COVER FROM ROME, N.Y. WITH "PAID/ CIII" IN CIRCLE, COIN-STYLE HANDSTAMP CANCEL (S-E PO-Co 6).

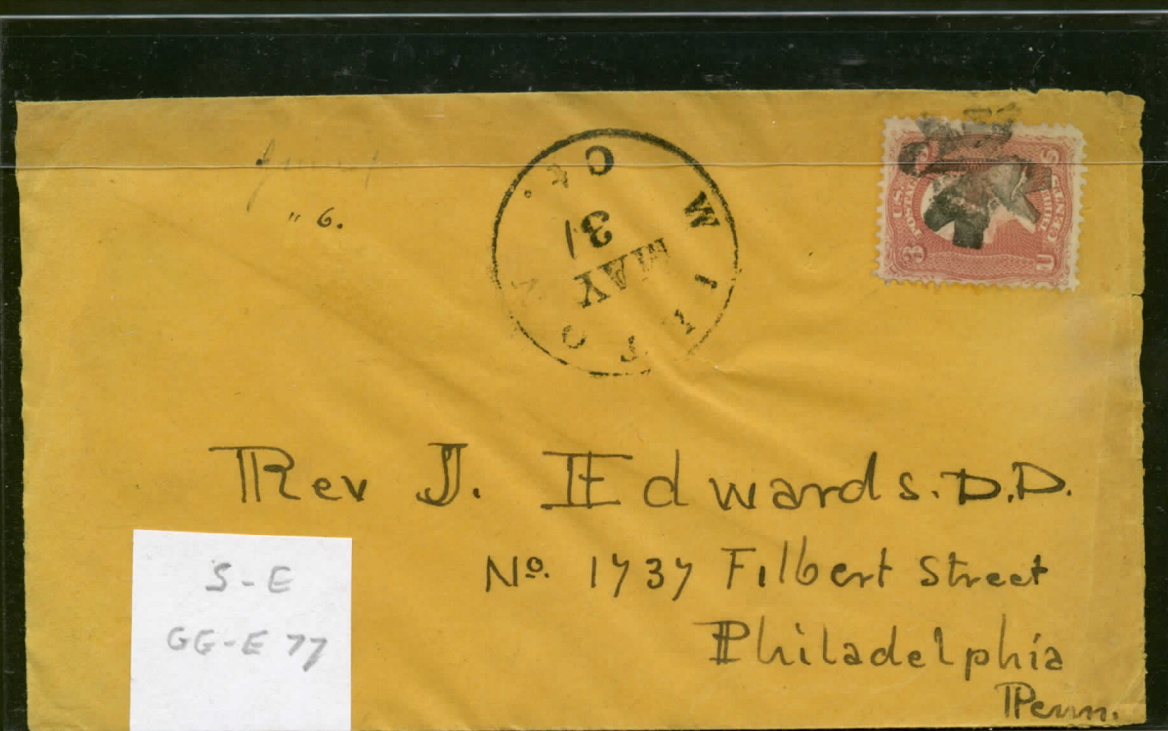
AND WE ARE OF THE OPINION THAT:

IT IS A GENUINE USAGE. THE COVER WITH LIGHT TONING AT BOTTOM LEFT.

\*\*\*\*









S-E  
GE-M12



Rev. J. G. Lee -  
St. Lawrence Univ.  
Canton -  
N. Y. -

S-E  
GE-P36



Mrs. Amelia S. Poling  
Loenst Valley  
Queens County  
N. York



Hon John Merwins  
was my grandfather  
Merwinsburg  
Munroe  
Pa.

GE-R23





SINGLE, TIED BY RECTANGULAR GEOMETRIC OF SHIRLEY VILLAGE, MS (S-E GE-S 16) ON COVER.

AND WE ARE OF THE OPINION THAT:

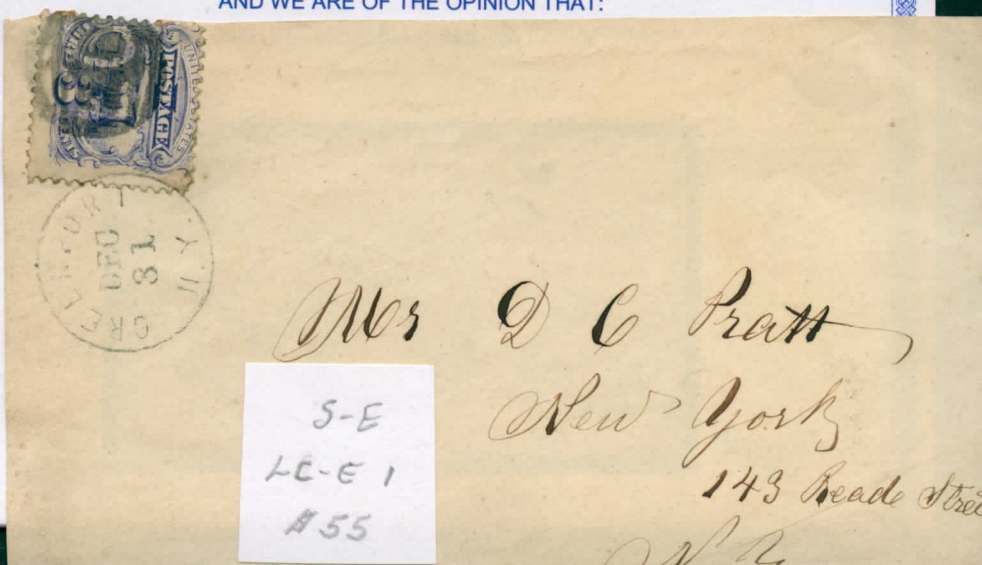
IT IS A GENUINE USAGE, THE STAMP WITH A TEAR AT UPPER RIGHT \*\*\*\*\*



USED, SINGLE, TIED BY NEGATIVE "EC" IN CIRCLE (S-E LC-E 1) "GREENWICH N.Y. DEC 31" PMK. ON COVER FRONT ONLY TO NEW YORK.

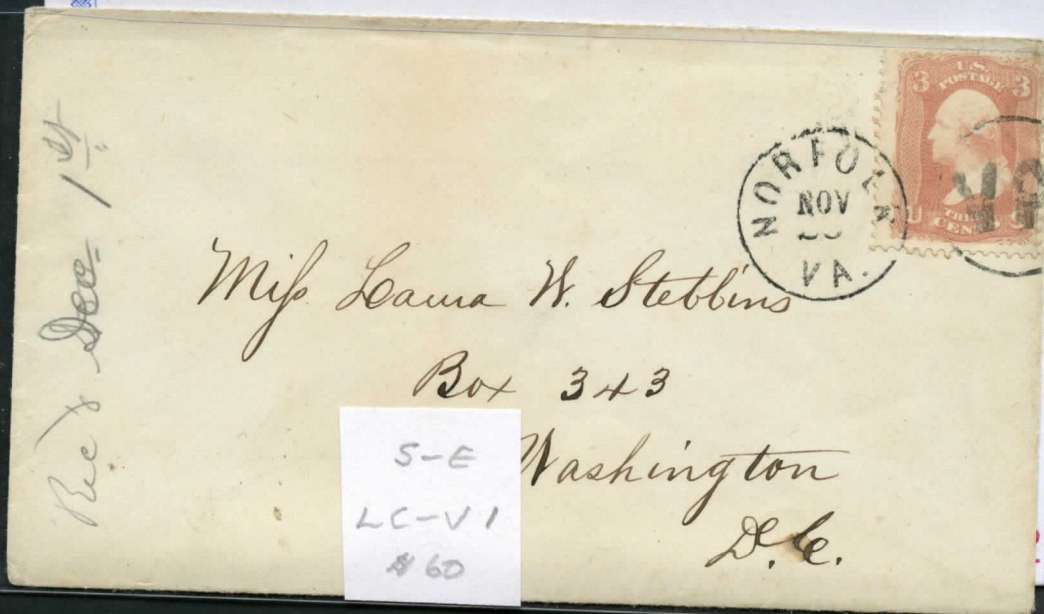
AND WE ARE OF THE OPINION THAT:

IT IS





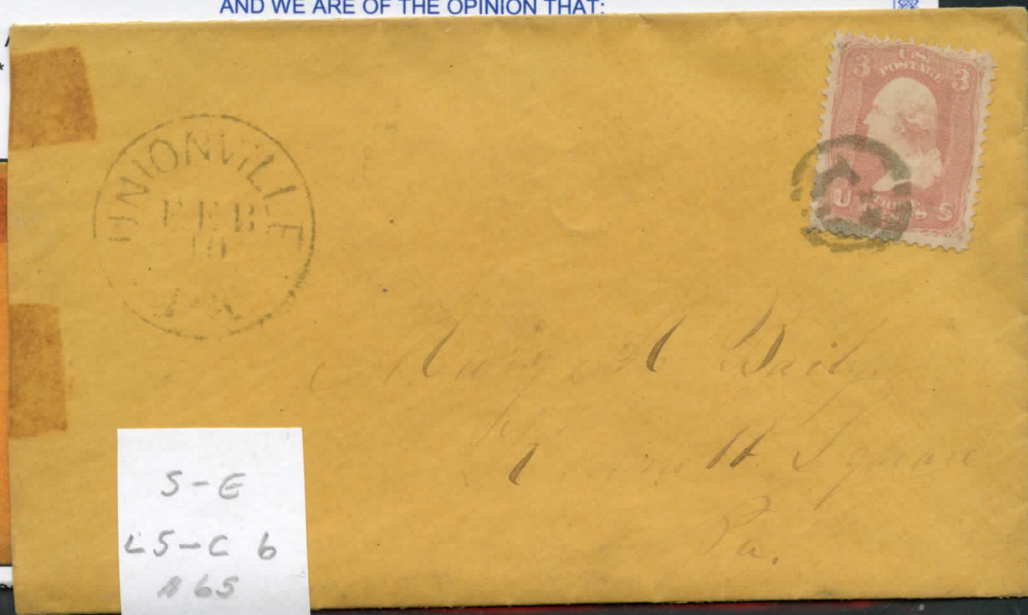
SINGLE TIED BY "VA" IN CIRCLE CANCEL (S-E LC-V 1) AND "NORFOLK VA." PMK. ON COVER.



SINGLE, TIED BY "C" IN CIRCLE CANCEL (S-E LS-C 6) ON COVER, "UNIONVILLE PA. FEB 10" PMK.

AND WE ARE OF THE OPINION THAT:

IT IS /  
\*\*\*\*

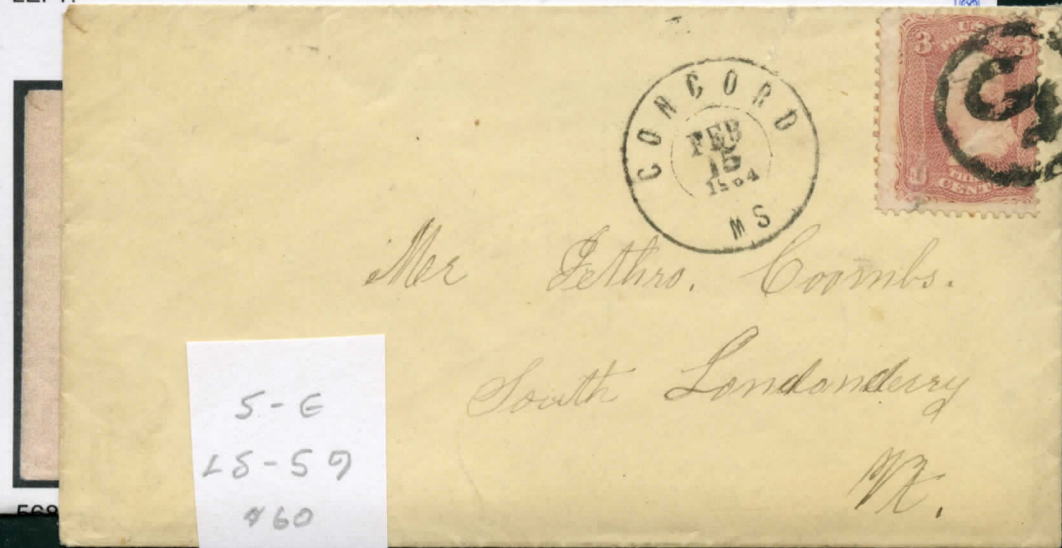




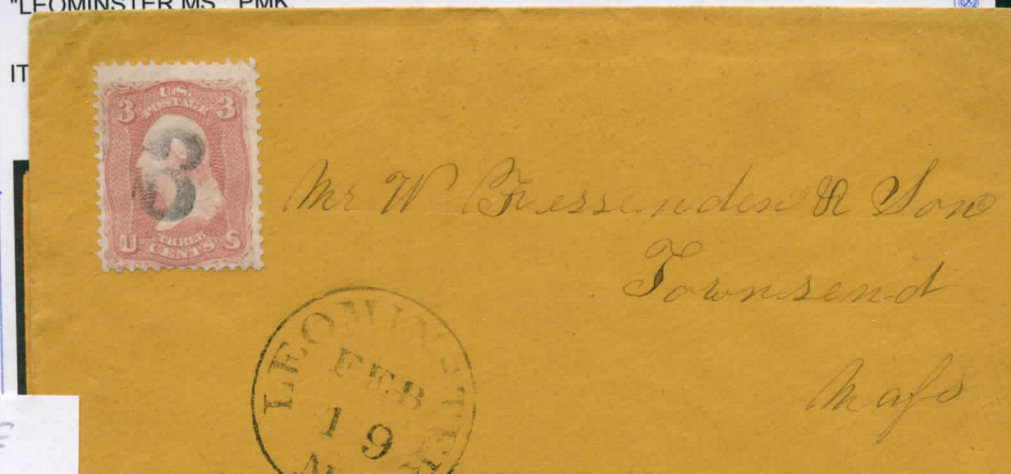
SINGLE, TIED BY LARGE "S" IN CIRCLE OF CONCORD, MS. (S-E LS-S 9) ON COVER, 1864 PMK.

AND WE ARE OF THE OPINION THAT:

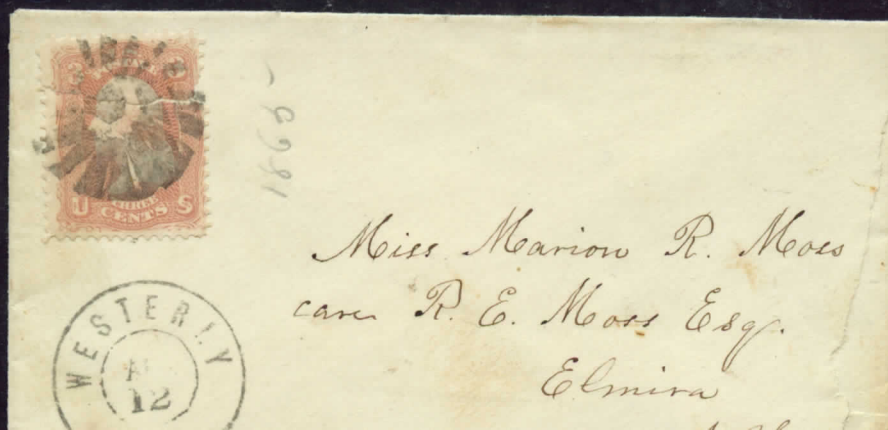
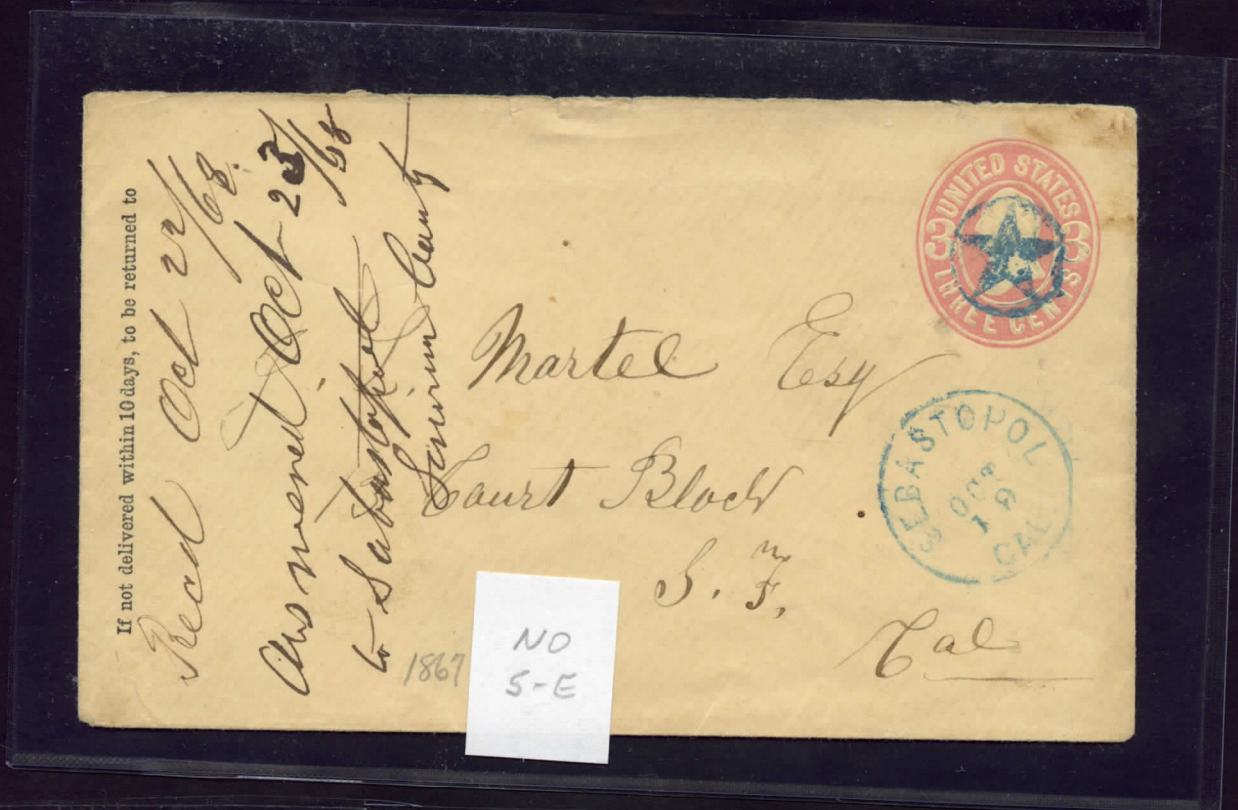
IT IS A GENUINE USAGE, THE STAMP WITH A SURFACE SCUFF AT BOTTOM LEFT. \*\*\*\*\*



SINGLE WITH "3" RATE HANDSTAMP CANCEL (S-E NS-C 7) ON COVER, "LEOMINSTER MS" PMK





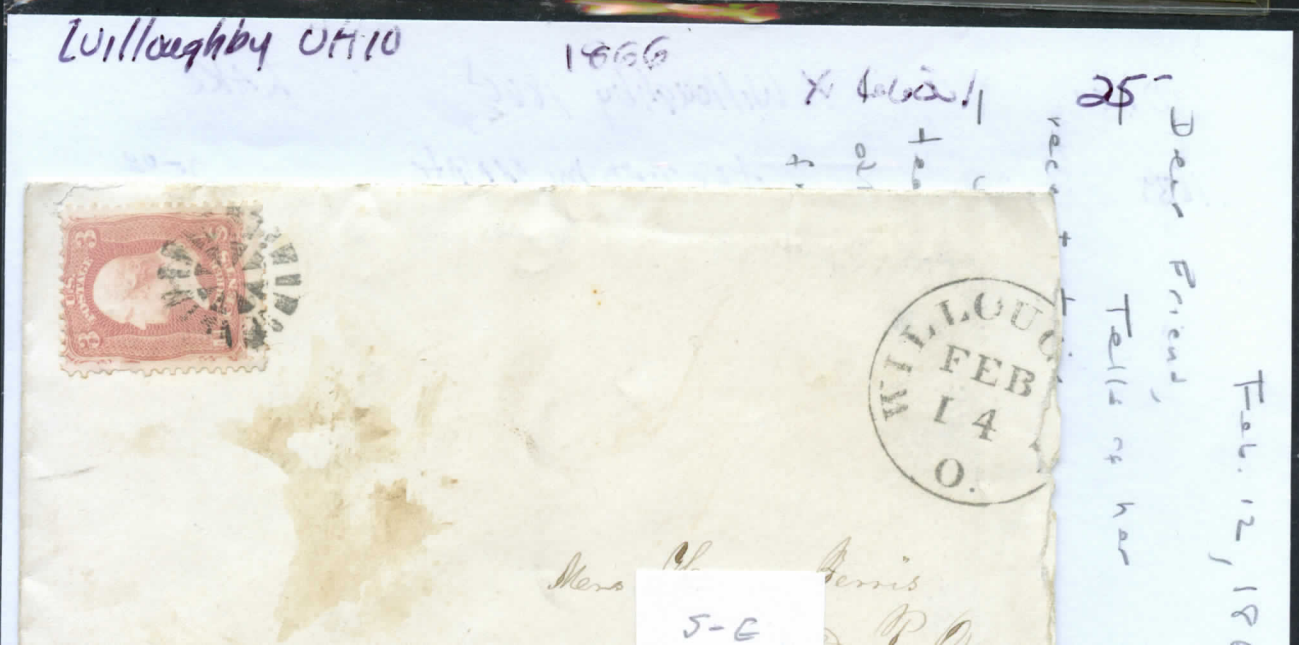
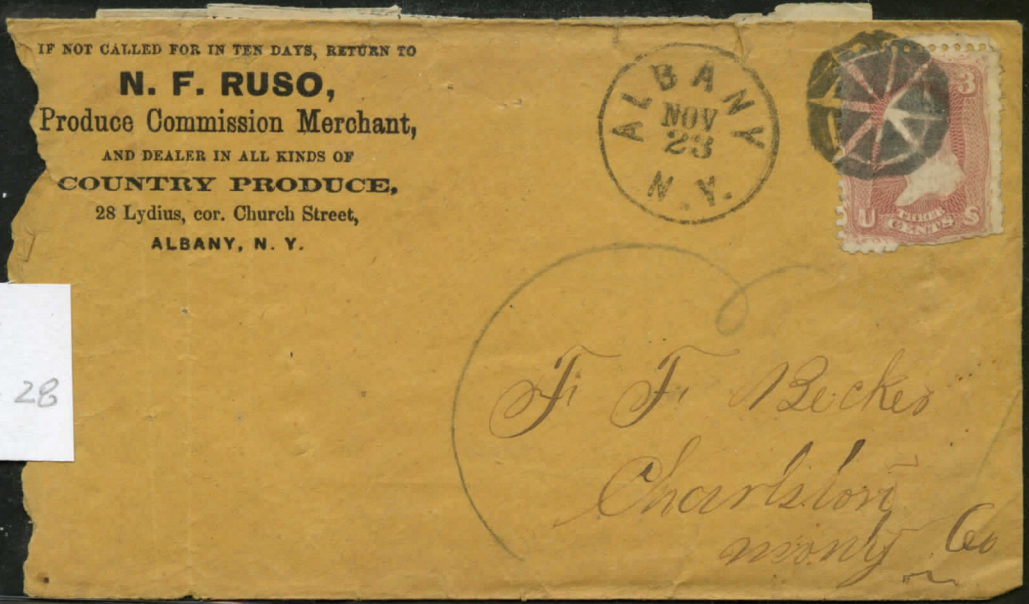




S-E  
GE-C 2



S-E  
GE-C 28





If not delivered within 10 days, to be returned to



Mrs. Geo. T. Bunch  
Louisville  
Ky.

S-E  
GG-C 69



W. Liske Eastman, Esq;  
Belleville,  
Jefferson Co.  
N. Y.

S-E  
GG-C 93



Mr. John Saul James  
Hudson Valley  
N.Y.

S-E  
GG-C 121



SINGLE, TIED BY SMALL GEOMETRIC CANCEL (S-E GE-C 146) ON COVER,  
"MADISON WIS." PMK.

AND WE ARE OF THE OPINION THAT:

GE-C

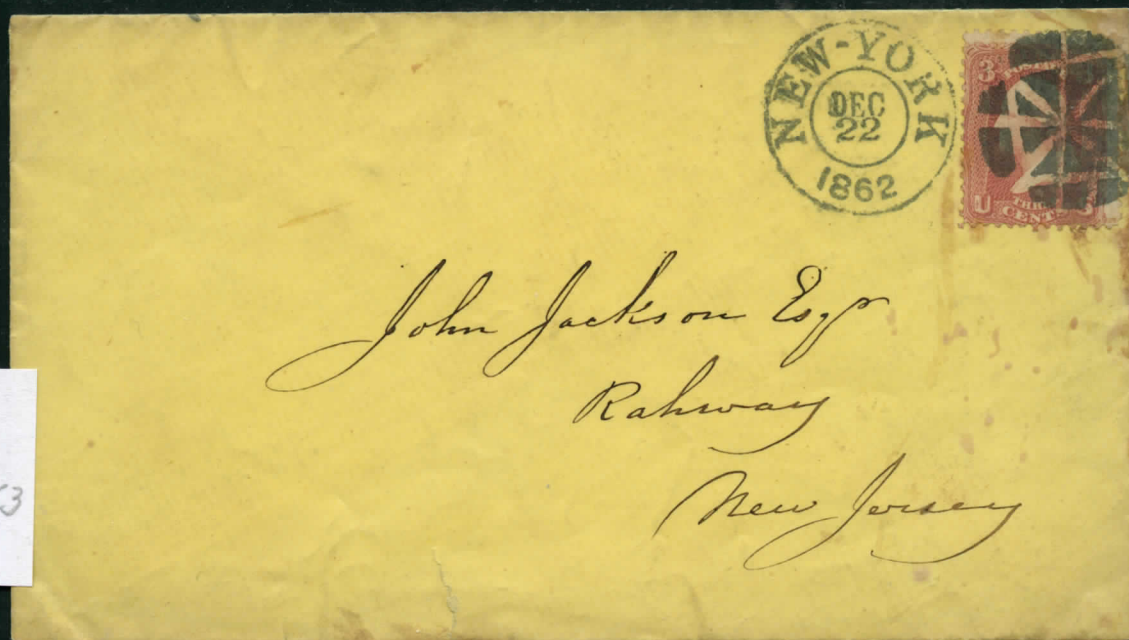
146

#60



S-E

GE-C 153



S E

GE-C 167

Variety 2

Return to W. W. FLANNAGAN,  
Agent, Piedmont & Arlington Life Insurance Co.,  
CHARLOTTESVILLE, Va.,  
if not delivered within 10 days.





S-E  
GE-08



Miss Ann Eliza Ford  
Box 17 - Suffield  
Conn -

S-E  
GE-E 21

Lasale M



Mr. Owen M. Dermott.  
Lagette, Lagette & Co.  
Iowa.

Dr. Care. of A. Hopkins.



Wm. Sperry Esq  
Marengo  
McHenry Co  
Ill

S-E  
NS-E9



Mrs Warren Grover



Silver Court

Chautauqua

Co  
N.Y.

S-E  
PM-PE 7



Stephen A. Hubbard

77 East Broadway

New York



S-E  
PM-PG 10



Mr Thomas Fuller

Dear Sir

me

S-E  
PM-PG 12





S-E  
SD-G 70

Mr. Hamilton P. Corser  
West Boscawen  
N. H.



S-E  
ST-C 41

Miss Perlina C. Devey  
Smiths Basin  
N. Y.



S-E  
ST-D 26

Mrs Elizabeth Cheever Washburn  
Worcester,  
Massachusetts }



