

The Carson City Collection of United States Gold Coins



ROBERT A. SIEGEL AUCTION GALLERIES, INC.
SALE 1223 • FRIDAY, JUNE 5, 2020, AT 1:30 P.M.

Sale 1223 — Thursday and Friday, June 4-5, 2020

United States Postal History and The Carson City Collection of U.S. Gold Coins

**Live auction to be held by Siegel Auction Galleries without public attendance
(all live bidding will be by telephone or internet). There is no presale viewing.**

**Lots are sold subject to an 18% buyer's premium and
any applicable sales tax or customs duty**

Please read the Conditions of Sale before bidding

THURSDAY, JUNE 4

10:30 a.m.—Session One—Lots 8001-8119

Free Franks and Autographs	8001-8012
Colonial & Early Stampless	8013-8022
Transatlantic Stampless, Ship Mail.....	8023-8032
Stampless Markings by State	8033-8046
Telegraph Markings.....	8047-8050
China and Far Eastern Mails	8051-8066
Hawaii and Pacific Islands	8067-8119

1:30 p.m.—Session Two—Lots 8120-8478

N.Y. Postmaster's Provisional	8120-8123
1847 Issue.....	8124-8131
1851-56 Issue	8132-8151
1857-60 Issue	8152-8172
1861-68 Issues	8173-8218
1869 Pictorial Issue	8219-8232
1870-88 Bank Note Issues.....	8233-8286
1890-93 thru Bureaus	8287-8305
Carriers and Locals	8306-8411
California and Western Mails	8412-8478

FRIDAY, JUNE 5

10:30 a.m.—Session Three—Lots 8479-8593

Civil War	8479-8501
Postal Card Advertisements	8502-8520
Guns and Ammunition Advertising	8521-8565
20th Century and Air Post Covers	8566-8578
Officials	8579-8580
Group Lots	8521-8593

1:30 a.m.—Session Four—Lots 9001-9199

The Carson City Collection of United States Gold Coins

Carson City Mint	9001-9030
\$1.00 to \$20.00.....	9031-9199



Lot 8117



Lot 9030

Robert A. Siegel

AUCTION GALLERIES, INC.

6 WEST 48TH STREET, 9TH FLOOR, NEW YORK, N.Y. 10036

Phone (212) 753-6421 • Fax (212) 753-6429 • E-mail: stamps@siegelauctions.com

Catalogues, internet bidding, resources, archives and the Siegel Encyclopedia at
siegelauctions.com



Robert A. Siegel

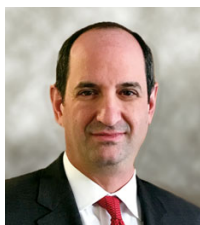
AUCTION GALLERIES, INC.

6 WEST 48TH STREET, 9TH FLOOR, NEW YORK, N.Y. 10036

Phone (212) 753-6421 • Fax (212) 753-6429 • Email: stamps@siegelauctions.com
siegelauctions.com



Scott R. Trepel
President
strepel
@siegelauctions.com



John P. Zuckerman
Senior Vice President
jzuckerman
@siegelauctions.com



Corey Long
Senior Vice President
clong
@siegelauctions.com

Siegel International
Dallas (214) 754-5991



Charles F. Shreve
Director, Siegel International
charles
@siegelauctions.com



Daphne Aitken
VP, Financial
daphne
@siegelauctions.com



Helen Stewart
VP, Operations
helen
@siegelauctions.com



Gina Cashia
Operations
gina
@siegelauctions.com



Andrew Titley
VP, Siegel International
andrew
@siegelauctions.com



Chris Anderson
International Specialist
chris
@siegelauctions.com

Scott R. Trepel Principal Auctioneer (licensed by NYC Dept. of Consumer Affairs, #795952)

Information for Bidders

Bidding

The following means are available for placing bids:

- 1) **NO PUBLIC ATTENDANCE AT AUCTION :** Due to current state restrictions, there will not be a floor auction open to bidders. All live bidding will be via mail, phone or internet.
- 2) **Live Internet Bidding:** Instructions for participating as a Live Internet Bidder are provided on the page opposite.
- 3) **Phone Bidding:** Bidders can be connected to the sale by phone and bid through a member of staff. Requests for phone bidding are subject to approval (please contact our office at least 24 hours before the sale). A signed Bid Form is required.
- 4) **Absentee Bids.** All bids received in advance of the sale, either by mail, fax, phone, email or internet, are Absentee Bids, which instruct the auctioneer to bid up to a specific amount on one or more lots in the sale. Absentee Bids sent by phone, fax or email should arrive at least one hour prior to the start of the sale session. Bids entered through Live Internet Bidding will be visible to the auctioneer during the sale. Written bids should be entered legibly on the Bid Form in the sale catalogue. Email and internet bids should be carefully typed and double-checked. All new bidders must provide references. We recommend calling or e-mailing to confirm that Absentee Bids sent by mail, fax or email have been received and entered.

No Pre-Sale Viewing for this Auction

Due to current state restrictions, there will not be any presale viewing in person or by mail. All lots are described and most are photographed in the catalogue. PDFs of group lots can be downloaded from the Siegel website. If you have questions regarding specific lots, please contact us at (212) 753-6421 or by email, and we will be pleased to examine the item(s) and provide additional information.

Expert Certification

Individual items offered without a certificate dated within the past five years may be purchased subject to independent certification of genuineness and our description. **Please refer to the Conditions of Sale and Grading Terms for policies governing certification.**

Shipping and Delivery

Procedures and charges for shipping lots are printed on the back of the Bid Form. **Bidders are responsible for all prescribed shipping charges and any applicable sales tax or customs duties.**

Price Realized

Prices realized are sent with each invoice. Bidders with email will receive a Bid Results report after the sale. Session results are posted immediately to siegelauctions.com

Live Internet Bidding at Siegel Auctions

REGISTERED BIDDERS MAY BID IN THIS SALE USING LIVE INTERNET BIDDING

This step-by-step guide will instruct you how to register, set your browser and use the bidding interface.

Start by following the simple steps to become a registered Live Internet Bidder.

Once you have been approved for bidding, you can listen to the auction and place bids with the click of a mouse.

Registering with STAMP AUCTION NETWORK & SIEGEL AUCTION GALLERIES

Live Internet Bidding is managed by Stamp Auction Network (SAN).

To bid, you must be registered and approved by both SAN and Siegel.

To decide what you need to do, choose the description below that best fits you.



I've already registered with SAN and have been approved by Siegel for internet bidding

I'm a Siegel client, but I'm not registered with SAN

Go to stampauctionnetwork.com/siegel and click on "Register" at the top. Check the box for Robert A. Siegel Auction Galleries (under "R") and submit the form, indicating you are a Siegel client. Once registered at SAN, you're ready for internet bidding.

I've bid through SAN before, but this is the first time I've bid in a Siegel sale

Then you just need to be approved by Siegel. Go to stampauctionnetwork.com/siegel and click on "Update Registration" at the top. Your SAN account information will be sent to us for approval (you might be asked for other trade references). Once approved by Siegel for bidding, you're ready for internet bidding.

I've never bid with Siegel, nor registered with SAN

Go to stampauctionnetwork.com/siegel and click on "Register" at the top. Check the box for Robert A. Siegel Auction Galleries (under "R") and submit the form with your trade references (please, no family members or credit card companies as references). Once registered at SAN and approved by Siegel for bidding, you're ready for internet bidding.

Live Internet Bidding works by allowing registered bidders to observe and place bids.

Live Internet Bidding will work with any browser on both PC and Mac operating systems.

Before bidding by internet for the first time, we recommend finding a sale in progress and listening to the public broadcast or logging in as a registered bidder. This will help you develop a feel for the sale tempo and bidding interface.

Log on to the auction at stampauctionnetwork.com

When you're logged on as a Live Internet Bidder, the bidding interface shows a photo and description of the lot, the current bid (and your bidding status), options for placing competitive bids and buttons with bid increments.

- After you click on a bid amount, the auctioneer is immediately notified of your bid.
- Retracting a bid is usually not acceptable, so please bid carefully.
- If you bid and then decide to stop, the "Pass" button will tell the auctioneer you are no longer bidding.
- You can send messages to the auctioneer (for example, a request for extension).
- You can track prior realizations from the bidding screen.

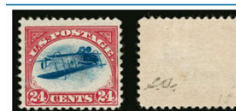
Robert A. Siegel Auction Galleries, Inc.'s Sale 1185

Closing on June 27, 2018. [Listen to the Auction.](#)
Contact us by Phone at (212) 753-6421, [Contact us Via eMail.](#)

F11 (if using Internet Explorer) toggles full

Lot and Description

Bidding



United States
Inverted Jenny Positions 15 and 6
Lot 91 - 24c Carmine Rose & Blue, Center Inverted (C3a). Position 15, the fifth stamp from the left in the second row of the sheet, original gum, deep rich colors, tiny thin spot just below the plane, faint traces of purple ink above the bottom left "2" (image)

\$ 450,000.00

Sold for \$ 270,000.00
Your Bid \$ 0.00

Bid 280000

Bid 290000

Bid 300000

Bid 310000

Bid 320000

Bid 330000

Bid 340000

Bid 350000

Bid 360000

Bid 370000

Bid 380000

Bid 390000

Bid 400000

Bid 410000

Bid 420000

Bid 430000

Bid 440000

Bid 450000

"System Down" or "Lost Connection" events do occasionally happen.

If you have any problems with Live Internet Bidding please call 212-753-6421 for immediate assistance.

Conditions of Sale (please read carefully before bidding)

THE PROPERTY IN THIS CATALOGUE WILL BE OFFERED AT PUBLIC AUCTION BY ROBERT A. SIEGEL AUCTION GALLERIES, INC. ("GALLERIES") ON BEHALF OF VARIOUS CONSIGNORS AND ITSELF OR AFFILIATED COMPANIES. BY BIDDING ON ANY LOT, WHETHER DIRECTLY OR THROUGH A THIRD PARTY, IN PERSON, BY TELEPHONE, FACSIMILE, INTERNET OR BY ANY OTHER MEANS, THE BIDDER ACKNOWLEDGES AND AGREES TO ALL OF THE FOLLOWING CONDITIONS OF SALE.

1. The highest bidder acknowledged by the auctioneer shall be the buyer. The term "final bid" means the last bid acknowledged by the auctioneer, which is normally the highest bid offered. **The purchase price payable by the buyer will be the sum of the final bid and a commission of 18% of the final bid ("buyer's premium"), together with any sales tax, use tax or customs duties due on the sale.**

2. The auctioneer has the right to reject any bid, to advance the bidding at his discretion and, in the event of a dispute, to determine the successful bidder, to continue the bidding or to reoffer and resell the lot in dispute. The Galleries' record of the final sale shall be conclusive.

3. All bids are per numbered lot in the catalogue unless otherwise announced by the auctioneer at the time of sale. The right is reserved to group two or more lots, to withdraw any lot or lots from the sale, or to act on behalf of the seller. The Galleries will execute bidding instructions on behalf of clients, but will not be responsible for the failure to execute such bids or for any errors in the execution of such bids.

4. **Lots with numbers followed by the symbol ° are offered subject to a confidential minimum bid ("reserve"), below which the lot will not be sold. The absence of the symbol ° means that the lot is offered without a reserve. If there is no reserve, the auctioneer has sole discretion to establish a minimum opening bid and may refuse an offer of less than half of the published estimate. Any lot that does not reach its reserve or opening bid requested by the auctioneer will be announced as "passed" and excluded from the prices realized lists after the sale. The Galleries may have a direct or indirect ownership interest in any or all lots in the sale resulting from an advance of monies or goods-in-trade or a guarantee of minimum net proceeds made by the Galleries to the seller.**

5. Subject to the exclusions listed in 5(A), the Galleries will accept the return of lots which, subject to the Galleries' sole judgment, have been misidentified or which have obvious faults that were present when the lot was in the Galleries' custody, but not so noted in the lot description. **All disputed lots must be received by the Galleries intact with the original packing material within 5 days of delivery to the buyer but no later than 30 days from the sale date. (5A) EXCLUSIONS:** The following lots may not be returned for any reason, or may not be returned for the reasons stated: (i) lots containing 5 or more items; (ii) lots from buyers who registered for the pre-sale exhibition or received lots by postal viewing, thereby having had the opportunity to inspect them before the sale; (iii) any lot described with "faults," "defects" or a specific fault may not be returned because of any secondary fault; (iv) photographed lots may not be returned because of centering, margins, short/nibbed perforations or other factors shown in the photos; (v) the color of the item does not match the color photo in the sale catalogue or website listing; (vi) the description contains inaccurate information about the quantity known or reported; or (vii) a certification service grades a stamp lower than the grade stated in the description or on an accompanying certificate.

6. Successful bidders, unless they have established credit with the Galleries prior to the sale, must make full payment in cleared funds before the lots will be delivered. Buyers not known to the Galleries must make payment in full within 3 days from the date of sale. **The Galleries retains the right to demand a cash deposit from anyone prior to bidder registration and/or to demand payment at the time the lot is knocked down, for any reason whatsoever.** In the event that any buyer refuses or fails to make payment in cash for any lot at the time it is knocked down to him, the auctioneer reserves the right to reoffer the lot immediately for sale to the highest bidder. **Credit cards (Visa, Mastercard and Discover only) can be accepted as payment, but will be subject to a 3% non-refundable Convenience Fee, which will be added to the total of the entire invoice (including hammer price, buyer's premium, shipping and transit insurance charges and any applicable taxes). The buyer waives the right to dispute all credit card charges.**

7. If the purchase price has not been paid within the time limit specified above, nor lots taken up within 7 days from the date of sale, the lots may be resold by whatever means deemed appropriate by the Galleries, and any loss incurred from resale will be charged to the defaulting buyer, and/or the Galleries may seek any other remedy prescribed by law to enforce payment. **Any account more than 30 days in arrears will be subject to a late payment charge of 1½% per month as long as the account remains in arrears. Any expenses incurred in securing payment from delinquent accounts will be charged to the defaulter.** A fee of \$250.00 will be charged for a check returned for insufficient funds.

8. All lots are sold as genuine. **Any lot accompanied by a certificate issued by The Philatelic Foundation or by Professional Stamp Experts within 5 years of the sale date is sold "as is" and in accordance with the description on the certificate. Such lots may not be returned for any reason, including but not limited to a contrary certificate of opinion or change in grade.** Buyers may request a certificate for a lot containing not more than one item, which does not have a P.F. or P.S.E. certificate (dated as above), provided that the following conditions are met: (i) the purchase price must be paid in full, (ii) if submitted by the buyer, the lot must be submitted to an acceptable expertizing service with a properly executed application form within 21 days of the sale, (iii) a copy of the application form must be given to the Galleries, (iv) the Galleries retains the right to resubmit the item for reconsideration, without time limit or other restrictions, for the purpose of obtaining a satisfactory opinion, (v) lots submitted for certification will be considered cleared 90 days from the date of sale, whether or not a certificate has been issued, unless the Galleries issues written approval of a further extension of return privileges, and (vi) in the event the lot is determined to be misidentified or misdescribed, pursuant to 5 and 5(A) of these Conditions, the Galleries will issue a refund to the buyer for the full purchase price and actual certification fees, but the reimbursement for certificate fees (and related costs) shall not exceed 10% of the hammer price of the lot. **Changes to a grade by the same certification service or a different grade from another certification service are not grounds for returning a lot.**

9. Until paid for in full, all lots remain the property of the Galleries on behalf of the seller.

10. Agents executing bids on behalf of clients may also be held responsible for all purchases made on behalf of clients, unless otherwise arranged prior to the sale.

11. **The buyer assumes all risk for delivery of purchased lots and agrees to pay for prescribed shipping costs. Buyers who receive lots in the U.S. are obligated to pay whatever sales tax or compensating use tax might be due, at any time, and buyers outside the U.S. are responsible for all customs duties.**

12. **The bidder consents that any action or proceeding against it may be commenced and maintained in any court within the State of New York or in the United States District Court for the Southern District of New York, that the courts of the State of New York and United States District Court for the Southern District of New York shall have jurisdiction with respect to the subject matter hereof and the person of the bidder. The bidder agrees not to assert any defense to any action or proceeding initiated by Galleries based upon improper venue or inconvenient forum. The bidder agrees that any action brought by the bidder shall be commenced and maintained only in a Federal Court in the United States District Court for the Southern District of New York or the State Court in the county in which Galleries has its principal place of business in New York. The bidder agrees not to use a public conflict resolution service and not to use any form of social media to publish comments or information about the Galleries and its employees which might harm the Galleries' reputation or business. These Conditions of Sale shall be governed by and construed in accordance with the substantive laws of the State of New York, and shall constitute an agreement that shall be binding on the parties, and their respective heirs, administrators, distributees, successors and assignees.**

SCOTT R. TREPEL, Principal Auctioneer (NYC License No. 795952)
N.Y.C. Department of Consumer Affairs
80 Lafayette Street, New York, N.Y. 10013
Telephone (212) 577-0111

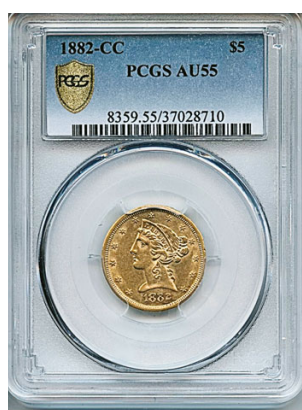
Revised 9/2018

AFTERNOON SESSION (LOTS 9001-9199)
FRIDAY, JUNE 5, 2020, AT 1:30 P.M.

All lots are sold subject to 18% Buyer's Premium (Minimum Bids do not include BP)

THE CARSON CITY COLLECTION OF UNITED STATES GOLD COINS

CARSON CITY MINT



9001 **\$5.00 1882 CC (Variety 1-A) (#8359).**

AU55 PCGS (# 37028710)

CDN/CPG® VALUE: **\$3,750**

ESTIMATE: **\$2,500**

MIN. BID W/O BP: **\$2,000**

CONDITION NOTES: Bright yellow-gold with lots of original luster, strong strike, very moderate wear except for one dent in rim at 3 o'clock

COMMENTS: 82,827 Half Eagles were minted at Carson City in 1882, and it is one of the more available CCs. This strong AU55 is a choice example.



9002

\$5.00 1891 CC (Variety 1-A) (#8378).

AU55 NGC (# 4425685001)

CDN/CPG® VALUE: **\$1,380**

ESTIMATE: **\$900**

MIN. BID W/O BP: **\$700**

CONDITION NOTES: Rose-gold with some reflective luster, sharp strike, minor contact marks in fields but a more prominent mark on Liberty's jaw

COMMENTS: At 208,000, the 1891-CC has the highest mintage of any Carson City gold issue.



9003

\$5.00 1892 CC (Variety 1-A) (#8380).

AU58 PCGS (# 81816459)

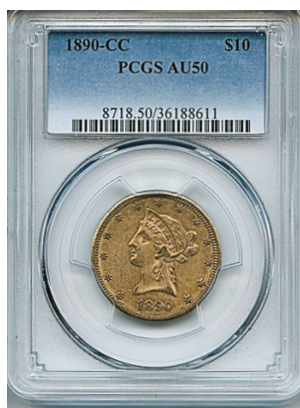
CDN/CPG® VALUE: **\$1,880**

ESTIMATE: **\$1,200**

MIN. BID W/O BP: **\$950**

CONDITION NOTES: Matte gold with some hints of original luster in protected areas, nice strike, very few traces of marks

COMMENTS: The 1891-CC Half Eagle is scarcer in higher AU and MS grades than the 1891-CC.



9004

\$10.00 1890 CC (Variety 1-A) (#8718).**AU50 PCGS (# 36188611)**CDN/CPG® VALUE: **\$2,120**ESTIMATE: **\$1,300**MIN. BID W/O BP: **\$1,000**

CONDITION NOTES: Khaki gold with flashes of original luster in angled light, sharp strike, scattered tiny marks and a couple of dark spots in Liberty's hair

COMMENTS: The 1890-CC was the first Eagle minted at Carson City since 1884. Only 17,500 were produced.



9005

\$10.00 1891 CC (Variety 1-A) (#8720).**MS62 NGC (# 3273074003)**CDN/CPG® VALUE: **\$3,000**ESTIMATE: **\$2,000**MIN. BID W/O BP: **\$1,600**

CONDITION NOTES: Beautiful reflective honey-gold surfaces and strong strike, a bag mark to the left of profile undoubtedly brought this down a grade, still a very attractive piece

COMMENTS: Just under 300,000 Eagles were minted in Carson City. The 1891s represent a little over one-third of the total.



9006

\$10.00 1892 CC (Variety 1-A) (#8722).**XF45 PCGS (# 36890718)**CDN/CPG® VALUE: **\$1,620**ESTIMATE: **\$1,000**MIN. BID W/O BP: **\$800**

CONDITION NOTES: Deep honey-gold with flashes of original luster in angled light, evident wear including a few marks on cheek

COMMENTS: IN GOD WE TRUST is die tripled, as seen on all examples of the low mintage Carson City issue.

9007

**\$20.00 1874 CC (#8971).****AU53 PCGS (# 34406418)**CDN/CPG® VALUE: **\$4,750**ESTIMATE: **\$3,000**MIN. BID W/O BP: **\$2,400**

CONDITION NOTES: Brilliant semi-reflective surfaces with significant original luster, very minor marks and overall a strong AU53 — in fact, this is superior to the other 53s we surveyed in auction records, many of which have significant marks, which are absent from this piece

COMMENTS: The 1874 Carson City Double Eagle was this mint's first significant release. The large mintages in 1874, 1875 and 1876 are attributed by numismatic scholars to the availability of gold from the Comstock Lode in these years (Goe). Unlike other years, few have come from the European bank hoards.

9008

**\$20.00 1874 CC (#8971).****XF45 PCGS (# 11837201)**CDN/CPG® VALUE: **\$3,750**ESTIMATE: **\$2,400**MIN. BID W/O BP: **\$1,900**

CONDITION NOTES: Honey-gold with traces of original luster around stars on obverse and in much of reverse, two prominent hairlines on face but otherwise fewer marks than usual for this Circulated grade

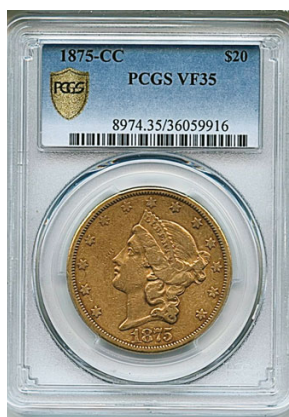
COMMENTS: The 1874 Carson City Double Eagle was this mint's first significant release. The large mintages in 1874, 1875 and 1876 are attributed by numismatic scholars to the availability of gold from the Comstock Lode in these years (Goe). Unlike other years, few have come from the European bank hoards.

9009

**\$20.00 1874 CC (#8971).****XF45 NGC (# 4824910008)**CDN/CPG® VALUE: **\$3,750**ESTIMATE: **\$2,400**MIN. BID W/O BP: **\$1,900**

CONDITION NOTES: Semi-reflective, especially on reverse, a couple of marks on cheek and under chin, otherwise quite better than usual for this Carson City year and grade

COMMENTS: The 1874 Carson City Double Eagle was this mint's first significant release. The large mintages in 1874, 1875 and 1876 are attributed by numismatic scholars to the availability of gold from the Comstock Lode in these years (Goe). Unlike other years, few have come from the European bank hoards.



9010

\$20.00 1875 CC (#8974).**VF35 PCGS (# 36059916)**CDN/CPG® VALUE: **\$3,190**ESTIMATE: **\$2,000**MIN. BID W/O BP: **\$1,600**

CONDITION NOTES: Rich gold color and overall attractive appearance for this mid-grade 1875 Carson City Double Eagle

COMMENTS: The 1875 Carson City Double Eagle is one of the most popular with collectors. The large mintages in 1874, 1875 and 1876 are attributed by numismatic scholars to the availability of gold from the Comstock Lode in these years (Goe).



9011

\$20.00 1876 CC (#8977).**XF45 NGC (# 3181087009)**CDN/CPG® VALUE: **\$3,500**ESTIMATE: **\$2,200**MIN. BID W/O BP: **\$1,700**

CONDITION NOTES: Deep honey-gold and strong strike, minimal friction marks including a couple in field to the left of profile

COMMENTS: The Centennial Year 1876 Double Eagle was the last of the Type II's produced at the Carson City Mint. 138,441 pieces were struck there. Expert numismatists estimate approximately 3,500-4,000 survive in all grades (Goe). Most of the higher grade pieces come from European bank hoards.



9012

\$20.00 1877 CC (#8983).**AU53 NGC (# 4876070001)**CDN/CPG® VALUE: **\$7,880**ESTIMATE: **\$5,000**MIN. BID W/O BP: **\$4,000**

CONDITION NOTES: Lovely satiny luster and minimal marks for this grade, pinkish hue at lower left of obverse add to this beautiful Carson City Double Eagle, much scarcer in AU53 or higher grades than other years

COMMENTS: Beginning with the 1877 mintage, Chief Engraver William Barber modified the Double Eagle design, most significantly by spelling out the "TWENTY DOLLARS" denomination. The 1877-CCs were struck at a slower rate than the 1874, 1875 and 1876 mintages. The 1877 has a lower survival rate, and most are in Circulated mid grades.



9013

\$20.00 1882 CC (#8997).**AU55 NGC (# 4656070006)**CDN/CPG® VALUE: **\$5,620**ESTIMATE: **\$3,500**MIN. BID W/O BP: **\$2,800**

CONDITION NOTES: Fantastic Mint State appearance with brilliant light yellow-gold luster on both sides, a few minor bag marks apparently kept this from a higher grade, but this is really superior to all of the AU55s we surveyed in auction record photos

COMMENTS: 39,140 Double Eagles were struck at the Carson City Mint in 1882. Most circulated on the West Coast, but a quantity of those shipped overseas were recovered in the European bank hoards.



9014

\$20.00 1882 CC (#8997).**AU53 PCGS (# 37895647)**CDN/CPG® VALUE: **\$4,380**ESTIMATE: **\$2,800**MIN. BID W/O BP: **\$2,200**

CONDITION NOTES: Honey-gold surfaces with areas of reflective luster in the more protected areas, especially on obverse, slightly darker patina on high points, from The Fairmont Collection

COMMENTS: 39,140 Double Eagles were struck at the Carson City Mint in 1882. Most circulated on the West Coast, but a quantity of those shipped overseas were recovered in the European bank hoards.

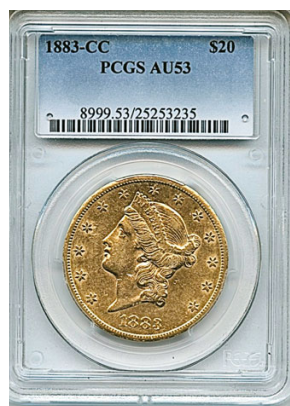


9015

\$20.00 1882 CC (#8997).**XF45 NGC (# 4426708004)**CDN/CPG® VALUE: **\$3,810**ESTIMATE: **\$2,500**MIN. BID W/O BP: **\$2,000**

CONDITION NOTES: Greenish gold with wear more noticeable on the obverse than reverse, still an attractive and affordable example of this scarce Carson City Double Eagle

COMMENTS: 39,140 Double Eagles were struck at the Carson City Mint in 1882. Most circulated on the West Coast, but a quantity of those shipped overseas were recovered in the European bank hoards.



9016

\$20.00 1883 CC (#8999).**AU53 PCGS (# 25253235)**CDN/CPG® VALUE: **\$4,410**ESTIMATE: **\$2,900**MIN. BID W/O BP: **\$2,300**

CONDITION NOTES: Brilliant reflective surfaces on both sides of this fabled Carson City Double Eagle, sharp strike, there are scattered minor marks, but certainly a strong AU53 piece with Mint State overall appearance

COMMENTS: The 1883 Carson City Double Eagle has a fairly high rate of survival (approximately 1,000 extant), considering that only 59,962 pieces were released. Some of this population was returned from the European bank hoards. Nonetheless, with its origin at the celebrated Carson City Mint, it is one of the more desirable Double Eagles.



9017

\$20.00 1883 CC (#8999).**XF45 NGC (# 4244289004)**CDN/CPG® VALUE: **\$3,500**ESTIMATE: **\$2,200**MIN. BID W/O BP: **\$1,700**

CONDITION NOTES: Honey-gold with slight dark patina on higher points, two marks on nose and neck and across second "8" of year

COMMENTS: The 1883 Carson City Double Eagle has a fairly high rate of survival (approximately 1,000 extant), considering that only 59,962 pieces were released. Some of this population was returned from the European bank hoards. Nonetheless, with its origin at the celebrated Carson City Mint, it is one of the more desirable Double Eagles.



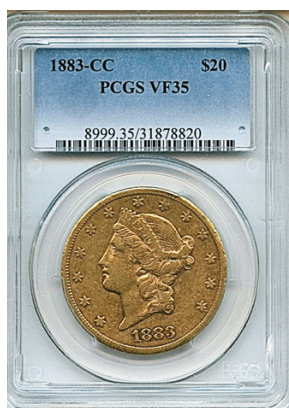
9018

\$20.00 1883 CC (#8999).**XF45 NGC (# 4518077002)**CDN/CPG® VALUE: **\$3,500**ESTIMATE: **\$2,200**MIN. BID W/O BP: **\$1,700**

CONDITION NOTES: Honey-gold with some dark patina on higher points, strong strike, no serious blemishes

COMMENTS: The 1883 Carson City Double Eagle has a fairly high rate of survival (approximately 1,000 extant), considering that only 59,962 pieces were released. Some of this population was returned from the European bank hoards. Nonetheless, with its origin at the celebrated Carson City Mint, it is one of the more desirable Double Eagles.

9019

**\$20.00 1883 CC (#8999).****VF35 PCGS (# 31878820)**CDN/CPG® VALUE: **\$2,940**ESTIMATE: **\$1,900**MIN. BID W/O BP: **\$1,500**

CONDITION NOTES: Brilliant semi-reflective surfaces on both sides with attractive pinkish hue around year and in a few other places on both sides, wear justifies the VF35 grade, but for overall beauty and appearance, this piece is more desirable than many in higher Circulated grades

COMMENTS: The 1883 Carson City Double Eagle has a fairly high rate of survival (approximately 1,000 extant), considering that only 59,962 pieces were released. Some of this population was returned from the European bank hoards. Nonetheless, with its origin at the celebrated Carson City Mint, it is one of the more desirable Double Eagles.

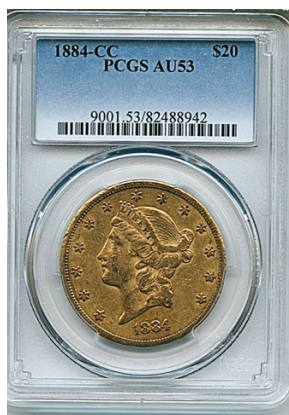
9020

**\$20.00 1883 CC (#8999).****VF30 NGC (# 4444827006)**CDN/CPG® VALUE: **\$2,880**ESTIMATE: **\$1,800**MIN. BID W/O BP: **\$1,400**

CONDITION NOTES: Classic deep gold tone and typical wear of Carson City Double Eagle that circulated on the frontier, some black spots on reverse, an affordable example of the 1883-CC

COMMENTS: The 1883 Carson City Double Eagle has a fairly high rate of survival (approximately 1,000 extant), considering that only 59,962 pieces were released. Some of this population was returned from the European bank hoards. Nonetheless, with its origin at the celebrated Carson City Mint, it is one of the more desirable Double Eagles.

9021

**\$20.00 1884 CC (#9001).****AU53 PCGS (# 82488942)**CDN/CPG® VALUE: **\$3,750**ESTIMATE: **\$2,500**MIN. BID W/O BP: **\$2,000**

CONDITION NOTES: Overall honey-gold surface with hint of rose tone in places and slightly dark patina on high points, some wear and scattered blemishes

COMMENTS: 81,139 Double Eagles were struck at the Carson City Mint in 1884, but were later melted. Of the pieces known today, most show circulation evidence to varying degrees.



9022

\$20.00 1884 CC (#9001).**XF45 PCGS (# 24302179)**CDN/CPG® VALUE: **\$3,310**ESTIMATE: **\$2,100**MIN. BID W/O BP: **\$1,600**

CONDITION NOTES: Brilliant semi-reflective surfaces on both sides, strong strike, tiny blemishes and dark spot on obverse at base of bust, but appearance that transcends its XF45 grade

COMMENTS: 81,139 Double Eagles were struck at the Carson City Mint in 1884, but were later melted. Of the pieces known today, most show circulation evidence to varying degrees.



9023

\$20.00 1884 CC (#9001).**VF25 PCGS (# 37821993)**CDN/CPG® VALUE: **\$2,940**ESTIMATE: **\$2,000**MIN. BID W/O BP: **\$1,600**

CONDITION NOTES: Classic deep gold tone and typical wear of Carson City Double Eagle that circulated on the frontier, an affordable example of the 1884-CC

COMMENTS: 81,139 Double Eagles were struck at the Carson City Mint in 1884, but were later melted. Of the pieces known today, most show circulation evidence to varying degrees.



9024

\$20.00 1889 CC (#9011).**XF45 NGC (# 4630990023)**CDN/CPG® VALUE: **\$4,250**ESTIMATE: **\$2,800**MIN. BID W/O BP: **\$2,200**

CONDITION NOTES: Beautiful satiny rose-gold luster, tiny spot on face and a few negligible marks, but overall an extremely attractive example of the historic 1889-CC

COMMENTS: Following the election of Grover Cleveland in 1884, his anti-silver administration suspended all coin mintage at Carson City. After Benjamin Harrison's election, Carson City began minting silver and gold coins again in 1889. Of the 30,945 1889-CCs released, numismatic experts estimate the 4% to 5% survive (Goe).



9025

\$20.00 1890 CC (#9014).**AU53 NGC (# 4000921003)****CDN/CPG® VALUE: \$3,620****ESTIMATE: \$2,400****MIN. BID W/O BP: \$1,900**

CONDITION NOTES: Brilliant semi-reflective rose-gold surfaces, although there is slight wear as is to be expected in the AU53 grade, the marks are scattered and negligible, wonderful eye appeal

COMMENTS: In 1890 a relatively large number of Double Eagles were minted at Carson City — 91,209, the fourth highest total for all years. It is no secret that a large portion of the surviving pieces — approximately 3,300-3,600 (Goe) — are in excellent condition, since many came from the European bank hoards, including virtually all of the About Circulated and Mint State coins.



9026

\$20.00 1890 CC (#9014).**AU53 NGC (# 4244376003)****CDN/CPG® VALUE: \$3,620****ESTIMATE: \$2,400****MIN. BID W/O BP: \$1,900**

CONDITION NOTES: Beautiful luster with small areas of dark patina, somewhat noticeable “bearclaw” mark on cheek, nonetheless an attractive About Uncirculated piece

COMMENTS: In 1890 a relatively large number of Double Eagles were minted at Carson City — 91,209, the fourth highest total for all years. It is no secret that a large portion of the surviving pieces — approximately 3,300-3,600 (Goe) — are in excellent condition, since many came from the European bank hoards, including virtually all of the About Circulated and Mint State coins.



9027

\$20.00 1890 CC (#9014).**AU50 NGC (# 1884390006)****CDN/CPG® VALUE: \$3,310****ESTIMATE: \$2,100****MIN. BID W/O BP: \$1,600**

CONDITION NOTES: Honey-gold with dark patina on high points, some dark spots on cheek and scattered marks, but a solid AU50 example of this desirable Carson City Double Eagle

COMMENTS: In 1890 a relatively large number of Double Eagles were minted at Carson City — 91,209, the fourth highest total for all years. It is no secret that a large portion of the surviving pieces — approximately 3,300-3,600 (Goe) — are in excellent condition, since many came from the European bank hoards, including virtually all of the About Circulated and Mint State coins.

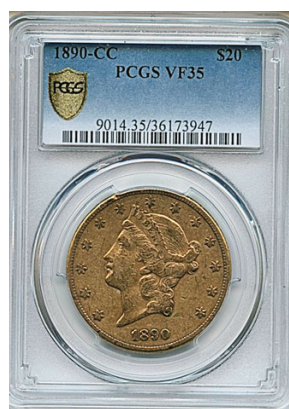


9028

\$20.00 1890 CC (#9014).**XF45 NGC (# 3644022006)**CDN/CPG® VALUE: **\$3,120**ESTIMATE: **\$2,000**MIN. BID W/O BP: **\$1,600**

CONDITION NOTES: Brilliant semi-reflective luster with hints of rose-gold, sharp strike, slight wear and scattered marks make this an XF45 grade, but the brilliance of this coin deserves attention

COMMENTS: In 1890 a relatively large number of Double Eagles were minted at Carson City — 91,209, the fourth highest total for all years. It is no secret that a large portion of the surviving pieces — approximately 3,300-3,600 (Goe) — are in excellent condition, since many came from the European bank hoards, including virtually all of the About Circulated and Mint State coins.



9029

\$20.00 1890 CC (#9014).**VF35 PCGS (# 36173947)**CDN/CPG® VALUE: **\$2,940**ESTIMATE: **\$2,000**MIN. BID W/O BP: **\$1,600**

CONDITION NOTES: Deep rose-gold luster, numerous tiny marks, but far better than the typical Circulated 1890-CC

COMMENTS: In 1890 a relatively large number of Double Eagles were minted at Carson City — 91,209, the fourth highest total for all years. It is no secret that a large portion of the surviving pieces — approximately 3,300-3,600 (Goe) — are in excellent condition, since many came from the European bank hoards, including virtually all of the About Circulated and Mint State coins.



9030

\$20.00 1892 CC (#9020).**MS61 PCGS (# 84104212)**CDN/CPG® VALUE: **\$12,000**ESTIMATE: **\$8,000**MIN. BID W/O BP: **\$6,000**

CONDITION NOTES: Lustrous surface with slightly darker patina across high points, minor bagmarks with a couple of hairlines, but no distracting blemishes

COMMENTS: Most of the 27,265 1892-CCs released were exported. Bowers estimates 800-1,200 survive with 150-225 in Mint State (most from the European bank hoards)

GOLD ONE-DOLLAR



9031

\$1.00 1851 C (#7514).**AU58 NGC (# 1800807018)****CDN/CPG® VALUE: \$2,620****ESTIMATE: \$1,700****MIN. BID W/O BP: \$1,400**

CONDITION NOTES: Bright yellow semi-reflective luster, sharp detail, no discernible marks and negligible evidence of wear

COMMENTS: 41,267 \$1.00 gold pieces were produced at this antebellum branch mint in Charlotte, North Carolina.



9032

\$1.00 1851 C (#7514).**AU58 NGC (# 664241002)****CDN/CPG® VALUE: \$2,620****ESTIMATE: \$1,700****MIN. BID W/O BP: \$1,400**

CONDITION NOTES: Brilliant reflective yellow luster and exceptionally strong strike of obverse, some softness in reverse, tiny mark on cheek, faint marks on reverse including one more pronounced contact mark to the right of "1", overall eye appeal is well above grade

COMMENTS: 41,267 \$1.00 gold pieces were produced at this antebellum branch mint in Charlotte, North Carolina.



9033

\$1.00 1853 O (#7524).**MS63 PCGS (# 84944735)****CDN/CPG® VALUE: \$1,750****ESTIMATE: \$1,100****MIN. BID W/O BP: \$850**

CONDITION NOTES: Beautiful honey-gold with toning on reverse, from the New Orleans Gold Hoard (PCGS)

COMMENTS: 290,000 \$1.00 gold pieces were minted at New Orleans in 1853.



9034

\$1.00 1855 (#7532).**MS63 NGC (# 1633975001)**CDN/CPG® VALUE: **\$4,000**ESTIMATE: **\$2,600**MIN. BID W/O BP: **\$2,000**

CONDITION NOTES: Deep gold satiny luster, better than usual strike, obverse with well-defined feathers in crown, reverse with sharply defined year, barest traces of contact in fields

COMMENTS: The \$1.00 Type II "Small Head" gold dollar was a short-lived issue, from 1854 to 1856.

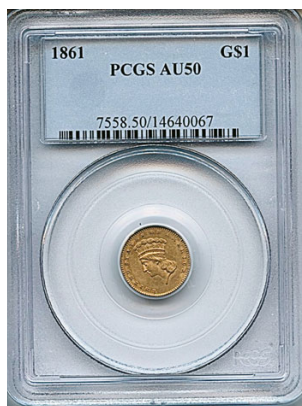


9035

\$1.00 1855 O (#7535).**AU58 NGC (# 4496119001)**CDN/CPG® VALUE: **\$5,030**ESTIMATE: **\$3,250**MIN. BID W/O BP: **\$2,500**

CONDITION NOTES: Honey-gold with mostly sharp detail, one or two trivial marks, from the New Orleans Gold Hoard (NGC)

COMMENTS: 1855 was the last year \$1.00 coins were minted at New Orleans. 55,000 pieces were produced and widely circulated. High-grade examples in About Uncirculated or Mint State are scarce (NGC 173/71).



9036

\$1.00 1861 (#7558).**AU50 PCGS (# 14640067)**CDN/CPG® VALUE: **\$390**ESTIMATE: **\$225**MIN. BID W/O BP: **\$180**

CONDITION NOTES: Deep matte gold with greenish hue in fields, decent strike and negligible wear but "Liberty" in crown is very faint, still a solid About Uncirculated piece

COMMENTS: 527,150 mintage at Philadelphia in 1861, the first year of the Civil War.



9037

\$1.00 1862 (#7560).**MS61 PCGS (# 5474130)**CDN/CPG® VALUE: **\$481**ESTIMATE: **\$275**MIN. BID W/O BP: **\$220**

CONDITION NOTES: Brilliant reflective yellow luster and strong strike, faint contact mark in field to the left of bust, an MS61 piece that surpasses many others in higher grades

COMMENTS: 1,361,355 mintage at Philadelphia in 1862.

GOLD QUARTER EAGLES



9038

\$2.50 1842 O (#7726).**AU58 NGC (# 4496102001)**CDN/CPG® VALUE: **\$5,940**ESTIMATE: **\$3,750**MIN. BID W/O BP: **\$3,000**

CONDITION NOTES: Deep orange-gold flashing crimson in angled light, remarkably strong and detailed strike which shows detail of Liberty and Eagle's feathers rarely seen on the examples we surveyed, including Mint State, barest traces of marks in field which we're imagining to justify the AU58 grade—we would put this beautiful and scarce 1842-O Quarter Eagle up against most of the examples with baseline MS grades—from the New Orleans Gold Hoard (NGC)

COMMENTS: Only 19,800 Quarter Eagles were struck at the New Orleans in 1842. It is decidedly scarce, with most examples in XF or lower grades, and many have weakness in the central areas of the strikes. In choice AU or MS grades, PCGS reports 9 AU58 (14 higher) and NGC 23 AU58 (15 higher).



9039

\$2.50 1848 C (#7750).**AU53 PCGS (# 82462339)**CDN/CPG® VALUE: **\$3,750**ESTIMATE: **\$2,400**MIN. BID W/O BP: **\$2,000**

CONDITION NOTES: Brilliant yellow-gold luster and reflective surface, unusually sharp strike with much more detail in bust than typically found on 1848-C pieces, a couple of faint shallow marks, but this seems very conservatively graded at AU53

COMMENTS: Only 16,788 Quarter Eagles were minted at Charlotte, North Carolina, in 1848. As Garrett notes (NGC website): "The coins are difficult to grade and almost appear to be damaged. The strike is particularly weak on the central portions of the obverse around the word LIBERTY. A small portion of the mintage was sharply struck, and these coins command a premium."

9040

\$2.50 1851 O (#7762).**MS61 NGC (# 4244310005)****CDN/CPG® VALUE: \$5,000****ESTIMATE: \$3,250****MIN. BID W/O BP: \$2,500**

CONDITION NOTES: Lovely honey-gold luster and semi-reflective surface, as sharp a strike as one can expect (typical slight weakness in the wing tips), a couple of faint shallow marks, overall beautiful eye appeal which exceeds its grade, from the New Orleans Gold Hoard (NGC)

COMMENTS: 148,000 Quarter Eagles were minted at New Orleans in 1851. Although Circulated examples are available, Mint State 1851-Os are scarce, with NGC reporting 24 in MS61 (15 higher).



9041

\$2.50 1861 (New Reverse) (#7794).**AU55 PCGS (# 21464972)****CDN/CPG® VALUE: \$455****ESTIMATE: \$275****MIN. BID W/O BP: \$200**

CONDITION NOTES: Honey-gold with sharp detail and relatively little evidence of wear, slight discoloration around devices

COMMENTS: 1,283,788 minted at Philadelphia in 1861, the first year of the Civil War.



9042

\$2.50 1862 (#7796).**AU53 NGC (# 4340947003)****CDN/CPG® VALUE: \$1,810****ESTIMATE: \$1,200****MIN. BID W/O BP: \$950**

CONDITION NOTES: Deep gold, strong strike, few tiny marks, slight discoloration around devices

COMMENTS: Only 98,508 Quarter Eagles were minted at Philadelphia in 1862. A popular wartime issue.





9043

\$2.50 1862 (#7796).

AU53 NGC (# 4355029011)

CDN/CPG® VALUE: **\$1,810**

ESTIMATE: **\$1,200**

MIN. BID W/O BP: **\$950**

CONDITION NOTES: Dark gold with toning, strong strike, few tiny marks

COMMENTS: Only 98,508 Quarter Eagles were minted at Philadelphia in 1862. A popular wartime issue.



9044

\$2.50 1908 (#7939).

MS63 PCGS (# 84217373) CAC

CDN/CPG® VALUE: **\$780**

ESTIMATE: **\$500**

MIN. BID W/O BP: **\$400**

CONDITION NOTES: Beautiful yellow-gold original luster, sharp detail, a gorgeous AU63 CAC-verified example of this popular 1908 Indian Quarter Eagle

COMMENTS: 1908 was the first year of the Indian Quarter Eagle series. 564,821 were minted at Philadelphia.



9045

\$2.50 1909 (#7940).

MS62 PCGS (# 34683923)

CDN/CPG® VALUE: **\$533**

ESTIMATE: **\$350**

MIN. BID W/O BP: **\$275**

CONDITION NOTES: Bright gold luster and detailed strike, no discernable marks

COMMENTS: 441,760 were minted at Philadelphia in 1909.

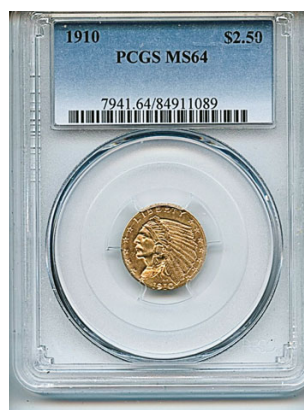


9046

\$2.50 1910 (#7941).**MS65 NGC (# 3310984003)**CDN/CPG® VALUE: **\$3,410**ESTIMATE: **\$2,200**MIN. BID W/O BP: **\$1,800**

CONDITION NOTES: Brilliant reflective luster and sharply detailed strike, careful examination reveals a faint hairline on the reverse field in angled light, thus MS65 with eye appeal to match any better

COMMENTS: 492,000 were minted at Philadelphia in 1910. It is much scarcer in MS65 and higher grades. NGC reports 203 MS65 and 18 higher.



9047

\$2.50 1910 (#7941).**MS64 PCGS (# 84911089)**CDN/CPG® VALUE: **\$1,230**ESTIMATE: **\$800**MIN. BID W/O BP: **\$650**

CONDITION NOTES: Brilliant reflective luster and extraordinary depth of detail, a few tiny hairline contact marks must have kept this out of the MS65 class

COMMENTS: 492,000 were minted at Philadelphia in 1910.



9048

\$2.50 1910 (#7941).**MS62 NGC (# 4492194007)**CDN/CPG® VALUE: **\$442**ESTIMATE: **\$275**MIN. BID W/O BP: **\$225**

CONDITION NOTES: Bright gold luster and detailed strike, no discernable marks

COMMENTS: 492,000 were minted at Philadelphia in 1910.



9049

\$2.50 1911 (#7942).**MS64 PCGS (# 37236077) CAC**CDN/CPG® VALUE: **\$1,260**ESTIMATE: **\$800**MIN. BID W/O BP: **\$650**

CONDITION NOTES: Bright honey-gold luster, no discernable marks, a gorgeous CAC-verified MS64 piece

COMMENTS: 704,000 were minted at Philadelphia in 1911.



9050

\$2.50 1911 (#7942).**MS62 NGC (# 3890851004)**CDN/CPG® VALUE: **\$468**ESTIMATE: **\$300**MIN. BID W/O BP: **\$250**

CONDITION NOTES: Orange-gold semi-reflective luster, decent strike, minor friction marks

COMMENTS: 704,000 were minted at Philadelphia in 1911.



9051

\$2.50 1911 D (#7943).**AU58 NGC (# 595180011)**CDN/CPG® VALUE: **\$4,620**ESTIMATE: **\$3,000**MIN. BID W/O BP: **\$2,400**

CONDITION NOTES: Bright gold and nicely detailed strike with the D mint mark full (a bit hard to see in this NGC holder), an attractive example of this scarce "key" to Indian Quarter Eagles

COMMENTS: The 1911-D Indian \$2.50 is a key year-mintmark piece for collectors. It is generally scarce, and examples in AU58 or higher grades are in great demand. One of the principal considerations is the strength of the mintmark, with Weak D examples being much less desirable and valued separately in the CPG.



9052

\$2.50 1912 (#7944).

MS62 NGC (# 3733770002)

CDN/CPG® VALUE: \$585

ESTIMATE: \$375

MIN. BID W/O BP: \$300

CONDITION NOTES: Deep gold satiny luster, sharp detail, tiny discolored spot in bottom of headdress

COMMENTS: 616,000 were minted at Philadelphia in 1912.



9053

\$2.50 1913 (#7945).

MS63 PCGS (# 84169360)

CDN/CPG® VALUE: \$650

ESTIMATE: \$425

MIN. BID W/O BP: \$325

CONDITION NOTES: Orange-gold satiny luster, no discernable marks

COMMENTS: 722,000 were minted at Philadelphia in 1913.



9054

\$2.50 1914 (#7946).

MS62 NGC (# 3703173012)

CDN/CPG® VALUE: \$1,220

ESTIMATE: \$800

MIN. BID W/O BP: \$650

CONDITION NOTES: Deep gold with dark toning on high points, detailed strike

COMMENTS: A relatively low 240,000 were minted at Philadelphia in 1914.



9055

\$2.50 1914 D (#7947).**MS62 NGC (# 4496132008)**CDN/CPG® VALUE: **\$559**ESTIMATE: **\$350**MIN. BID W/O BP: **\$275**

CONDITION NOTES: Honey-gold semi-reflective luster with sharp detail, contact mark in field to the left of forehead

COMMENTS: 448,000 were minted at Denver in 1914.



9056

\$2.50 1915 (#7948).**MS62 NGC (# 3817355007)**CDN/CPG® VALUE: **\$442**ESTIMATE: **\$275**MIN. BID W/O BP: **\$225**

CONDITION NOTES: Orange-gold with faint dark toning on high points, detailed strike

COMMENTS: 606,000 were minted at Philadelphia in 1915.



9057

\$2.50 1929 (#7953).**MS65 NGC (# 3809050014)**CDN/CPG® VALUE: **\$3,120**ESTIMATE: **\$2,000**MIN. BID W/O BP: **\$1,700**

CONDITION NOTES: Beautiful rose-gold satiny luster, sharply detailed strike, couple hairlines on the reverse fields

COMMENTS: 1929 was the last mintage of the Indian Quarter Eagle. Although there is an abundance of pieces in MS grades below 65, it is widely recognized as a very scarce coin in Gem quality.

GOLD THREE-DOLLAR



9058

\$3.00 1854 O (#7971).**AU55 NGC (# 1700560001)**CDN/CPG® VALUE: **\$5,750**ESTIMATE: **\$3,750**MIN. BID W/O BP: **\$3,000**

CONDITION NOTES: Bright yellow-gold lustrous surfaces with sharp details, which is unusual for this issue, couple small marks on face, but these are negligible — the 1854-O is very scarce in better AU grades and rare in Mint State, so this strong AU55 is extremely desirable

COMMENTS: The \$3.00 Princess was minted from 1854 through 1889. For most of these years, the basic domestic postage rate was 3¢, so a single gold coin could be used to buy a standard sheet of 100 stamps. 1854, the first year of issue, was the New Orleans Mint's only mintage of the series. 24,000 pieces were released.



9059

\$3.00 1856 (#7974).**AU58 NGC (# 4838479004)**CDN/CPG® VALUE: **\$2,120**ESTIMATE: **\$1,300**MIN. BID W/O BP: **\$950**

CONDITION NOTES: Beautiful rich honey-gold surfaces with extremely sharp details, minimal blemishes do not detract from the overall choice appearance

COMMENTS: 26,010 of the \$3.00 Princess were minted in Philadelphia for circulation in 1856.



9060

\$3.00 1859 (#7979).**AU58 NGC (# 4877993003)**CDN/CPG® VALUE: **\$2,250**ESTIMATE: **\$1,300**MIN. BID W/O BP: **\$950**

CONDITION NOTES: Deep satiny gold surfaces with hint of greenish hue, moderately detailed strike, no prominent marks but a slightly discolored spot in field to left of bust

COMMENTS: 15,558 of the \$3.00 Princess were minted in Philadelphia for circulation in 1859.



9061

\$3.00 1860 (#7980).**MS62 PCGS (# 37616575)****CDN/CPG® VALUE: \$5,940****ESTIMATE: \$3,750****MIN. BID W/O BP: \$3,000**

CONDITION NOTES: Lovely gold luster with hints of rose-gold on both surfaces, sharp and fully defined strike, minute mark on cheek but otherwise virtually mark-free

COMMENTS: 7,036 \$3.00 Princess coins were minted in Philadelphia for circulation in 1860. It is believed that many of these were melted after northern banks suspended gold specie payments in December 1861 (Bowers). PCGS reports 36 at MS62 and 45 higher. NGC reports 14 MS62 and 17 higher



9062

\$3.00 1861 (#7982).**AU58 NGC (# 4428003003)****CDN/CPG® VALUE: \$6,910****ESTIMATE: \$4,500****MIN. BID W/O BP: \$3,500**

CONDITION NOTES: Lovely rose-gold surfaces, especially strong crimson hue on the reverse, although the strike is somewhat soft, there is very little wear and virtually no handling marks, an attractive high-grade About Uncirculated example of this scarce Civil War era \$3.00 Princess

COMMENTS: An extremely low-volume mintage of 5,959 \$3.00 Princess pieces was made at Philadelphia during the first year of the Civil War, as the utility and demand for this odd denomination waned. NGC reports just 70 in AU58 (61 higher).



9063

\$3.00 1862 (#7983).**AU55 NGC (# 1891241004)****CDN/CPG® VALUE: \$5,190****ESTIMATE: \$3,250****MIN. BID W/O BP: \$2,600**

CONDITION NOTES: Attractive medium gold luster, sharp strike, scattered minute marks, a strong AU55

COMMENTS: There were just 5,750 \$3.00 Princess coins minted for circulation in the second year of the Civil War. Fewer than 300 coins in all grades are estimated to survive (Bowers).



9064

\$3.00 1868 (#7989).**MS61 PCGS (# 35931780)****CDN/CPG® VALUE: \$4,280****ESTIMATE: \$2,800****MIN. BID W/O BP: \$2,200**

CONDITION NOTES: Brilliant orange-gold proof-like reflective surfaces with an almost cameo effect, sharply detailed strike, minute contact mark at the base of the bust and a hairline across "A" of "States", but we really do not see anything to explain the MS61 grade, its appearance is near Gem-like

COMMENTS: There were just 4,850 \$3.00 Princess coins minted for circulation in 1868. PCGS 18 at MS61 and 99 higher. NGC reports 48 MS61 and 38 higher.

GOLD HALF EAGLES



9065

\$5.00 1841 C (#8203).**AU55 NGC (# 4252824004)****CDN/CPG® VALUE: \$6,560****ESTIMATE: \$4,000****MIN. BID W/O BP: \$3,000**

CONDITION NOTES: Beautiful honey-gold semi-reflective luster with traces of crimson, sharp detail with minimal wear, but a few marks mostly confined to fields, a couple of short contact marks on bridge of Liberty's nose

COMMENTS: 21,467 Half Eagles were minted at Charlotte in 1841. Most are in the grade range of Extremely Fine to About Uncirculated (MS pieces are rare). PCGS reports 10 AU55 and 18 higher. NGC reports 18 AU55 and 19 higher.



9066

\$5.00 1850 D (#8245).**AU50 PCGS (# 81444648)****CDN/CPG® VALUE: \$4,000****ESTIMATE: \$2,300****MIN. BID W/O BP: \$1,800**

CONDITION NOTES: Orange-gold with crimson in angled light, sharp strike but mintmark is slightly weak, moderate wear, a few deeper marks on Liberty and in obverse field

COMMENTS: 43,984 Half Eagles were minted at the Dahlonega branch mint in 1850. It is scarce in all grades, and difficult to obtain in About Uncirculated or Mint State grades. PCGS reports 27 AU50 and 36 higher. NGC reports 11 AU55 and 71 higher.



9067

\$5.00 1861 (#8288).**MS62 PCGS (# 90118151)****CDN/CPG® VALUE: \$2,500****ESTIMATE: \$1,600****MIN. BID W/O BP: \$1,200**

CONDITION NOTES: Fantastic deep orange-gold luster with semi-reflective surfaces, sharply detailed strike, a couple of light marks on Liberty's face and a small discolored spot on obverse, but the eye appeal of this coin exceeds its grade.

COMMENTS: 688,150 Half Eagles were minted at Philadelphia in the first year of the Civil War.



9068

\$5.00 1861 (#8288).**AU55 NGC (# 4331564004)****CDN/CPG® VALUE: \$897****ESTIMATE: \$550****MIN. BID W/O BP: \$450**

CONDITION NOTES: Light rose-gold and detailed strike with moderate wear and scattered marks

COMMENTS: 688,150 Half Eagles were minted at Philadelphia in the first year of the Civil War. PCGS reports 76 MS62 and 105 higher. NGC reports 73 MS62 and 55 higher.



9069

\$5.00 1879 (#8348).**MS61 PCGS (# 36021738)****CDN/CPG® VALUE: \$613****ESTIMATE: \$400****MIN. BID W/O BP: \$350**

CONDITION NOTES: Bright yellow gold with some original luster, moderate traces of abrasion but no serious marks

COMMENTS: 301,920 Half Eagles were minted at Philadelphia in 1879.



9070

\$5.00 1880 S (#8353).**MS61 NGC (# 4356730001)**CDN/CPG® VALUE: **\$574**ESTIMATE: **\$400**MIN. BID W/O BP: **\$350**

CONDITION NOTES: Gorgeous honey-gold luster with semi-reflective surfaces, sharp strike, faint scattered abrasion marks but really great eye appeal

COMMENTS: 1,348,900 Half Eagles were minted at San Francisco in 1880.



9071

\$5.00 1881 (#8354).**MS61 PCGS (# 7087271)**CDN/CPG® VALUE: **\$574**ESTIMATE: **\$400**MIN. BID W/O BP: **\$350**

CONDITION NOTES: Deep orange-gold luster and frosty surfaces, negligible friction marks, in Generation 1.2 PCGS holder

COMMENTS: Millions minted and thousands available, even in Mint State, but still a desirable Liberty Half Eagle.



9072

\$5.00 1886 S (#8370).**MS61 PCGS (# 4375195)**CDN/CPG® VALUE: **\$574**ESTIMATE: **\$400**MIN. BID W/O BP: **\$350**

CONDITION NOTES: Deep matte gold surfaces and detailed strike, unobtrusive friction marks in fields and on Liberty's cheek, Generation 3.1 PCGS holder

COMMENTS: Millions minted and thousands available, even in Mint State, but still a desirable Liberty Half Eagle.



9073

\$5.00 1895 (#8390).

MS61 PCGS (# 3372566)

CDN/CPG® VALUE: **\$574**

ESTIMATE: **\$400**

MIN. BID W/O BP: **\$350**

CONDITION NOTES: Orange-gold and semi-reflective surfaces, strong strike

COMMENTS: 1,345,855 minted at Philadelphia in 1895.



9074

\$5.00 1897 (#8394).

MS61 PCGS (# 4386056)

CDN/CPG® VALUE: **\$574**

ESTIMATE: **\$400**

MIN. BID W/O BP: **\$350**

CONDITION NOTES: Beautiful honey and rose gold surfaces and detailed strike, unobtrusive friction marks in fields, Generation 3.1 PCGS holder

COMMENTS: 867,800 minted at Philadelphia in 1897.



9075

\$5.00 1901 S (#8404).

MS61 NGC (# 2644454030)

CDN/CPG® VALUE: **\$574**

ESTIMATE: **\$400**

MIN. BID W/O BP: **\$350**

CONDITION NOTES: Yellow and rose gold surfaces and detailed strike, minor friction marks in fields and a few on Liberty's cheek

COMMENTS: Millions minted and thousands available, even in Mint State, but still a desirable Liberty Half Eagle.



9076

\$5.00 1903 S (#8408).**MS61 PCGS (# 4275883)**CDN/CPG® VALUE: **\$572**ESTIMATE: **\$400**MIN. BID W/O BP: **\$350**

CONDITION NOTES: Orange-gold with some original luster, detailed strike, contact marks at base of bust and behind hair, Generation 3.1 PCGS holder

COMMENTS: 1,855,000 minted at San Francisco in 1903.



9077

\$5.00 1906 D (#8414).**MS61 NGC (# 4925828009)**CDN/CPG® VALUE: **\$572**ESTIMATE: **\$400**MIN. BID W/O BP: **\$350**

CONDITION NOTES: Orange-gold with some original luster, detailed strike, faint abrasion traces in fields

COMMENTS: Relatively low 320,000 Half Eagle mintage at Denver in 1906.



9078

\$5.00 1906 D (#8414).**MS61 NGC (# 4925828008)**CDN/CPG® VALUE: **\$572**ESTIMATE: **\$400**MIN. BID W/O BP: **\$350**

CONDITION NOTES: Orange-gold with some original luster, detailed strike, contact marks in fields and tiny ones on bust

COMMENTS: Relatively low 320,000 Half Eagle mintage at Denver in 1906.



9079

\$5.00 1908 D (#8511).**MS63 NGC (# 3100993003)**CDN/CPG® VALUE: **\$1,180**ESTIMATE: **\$800**MIN. BID W/O BP: **\$600**

CONDITION NOTES: Rose-gold, sharp detail, minor mark on reverse

COMMENTS: Low 148,000 Indian Half Eagle mintage at Denver in 1908.



9080

\$5.00 1909 (#8513).**MS64 PCGS (# 3718866)**CDN/CPG® VALUE: **\$2,250**ESTIMATE: **\$1,400**MIN. BID W/O BP: **\$1,100**

CONDITION NOTES: Gorgeous orange-gold luster, sharp detail, virtually no marks

COMMENTS: 627,060 minted at Philadelphia in 1909.



9081

\$5.00 1911 (#8520).**MS64 PCGS (# 35819241)**CDN/CPG® VALUE: **\$2,280**ESTIMATE: **\$1,400**MIN. BID W/O BP: **\$1,100**

CONDITION NOTES: Gorgeous honey-gold luster, sharp detail, virtually no marks

COMMENTS: 915,000 minted at Philadelphia in 1911.



9082

\$5.00 1911 S (#8522).**MS62 PCGS (# 36610993)**CDN/CPG® VALUE: **\$1,750**ESTIMATE: **\$1,100**MIN. BID W/O BP: **\$900**

CONDITION NOTES: Brilliant semi-reflective yellow-gold surfaces, sharp detail, contact mark on cheek but great eye appeal

COMMENTS: 1,416,000 minted at San Francisco in 1911.



9083

\$5.00 1912 (#8523).**MS64 PCGS (# 81857908)**CDN/CPG® VALUE: **\$2,250**ESTIMATE: **\$1,400**MIN. BID W/O BP: **\$1,200**

CONDITION NOTES: Rose-gold with olive accents, sharp strike, somewhat prominent contact mark off bridge of nose

COMMENTS: 790,000 minted at Philadelphia in 1912.



9084

\$5.00 1913 (#8525).**MS64 PCGS (# 33414770) CAC**CDN/CPG® VALUE: **\$2,690**ESTIMATE: **\$1,700**MIN. BID W/O BP: **\$1,400**

CONDITION NOTES: Wonderful deep orange-gold luster, sharp detail, a couple of negligible contact marks, CAC-verified

COMMENTS: 915,901 minted at Philadelphia in 1913.



9085

\$5.00 1913 S (#8526).**MS61 NGC (# 3890034009)**CDN/CPG® VALUE: **\$2,380**ESTIMATE: **\$1,500**MIN. BID W/O BP: **\$1,200**

CONDITION NOTES: Honey-gold luster with rose and olive accents, mostly sharp strike with slight softness in feathers

COMMENTS: 408,000 minted at San Francisco in 1913.



9086

\$5.00 1914 D (#8528).**MS64 PCGS (# 37442511)**CDN/CPG® VALUE: **\$4,380**ESTIMATE: **\$2,900**MIN. BID W/O BP: **\$2,300**

CONDITION NOTES: Honey-gold satiny luster, well-defined mintmark and feathers, tiny mark on the cheek and a few in fields, but overall a very attractive piece

COMMENTS: Low 247,000 Indian Half Eagle mintage at Denver in 1914.



9087

\$5.00 1916 S (#8532).**MS63 PCGS (# 34515114)**CDN/CPG® VALUE: **\$3,620**ESTIMATE: **\$2,400**MIN. BID W/O BP: **\$1,900**

CONDITION NOTES: Bright yellow gold original luster, bold mintmark, very slight traces of abrasion but no serious marks

COMMENTS: 1916 was the last year the Indian Half Eagle was minted at San Francisco, with a relatively low 240,000 mintage. PCGS reports 256 MS63 and 152 higher. NGC 79 MS63 and 80 higher.

GOLD EAGLES



9088

\$10.00 1844 O (#8591).**AU55 NGC (# 429989011)**CDN/CPG® VALUE: **\$3,440**ESTIMATE: **\$2,200**MIN. BID W/O BP: **\$1,800**

CONDITION NOTES: Intense deep gold luster with hints of crimson gold, a few hairlines behind head and typical light overall abrasion marks, but without the prominent marks noted on other AU55 pieces (except for a one in the rim of the reverse at 11 o'clock)

COMMENTS: Despite the availability of New Orleans Mint \$10.00 1844s, pieces in About Uncirculated grades are scarce, and AU55 and AU58 coins are rare (only a handful exist in Mint State).



9089

\$10.00 1847 (#8597).**AU55 NGC (# 4305249045)**CDN/CPG® VALUE: **\$1,260**ESTIMATE: **\$800**MIN. BID W/O BP: **\$700**

CONDITION NOTES: Deep gold with traces of original luster in protected areas, strong strike, some scattered marks and a more prominent one behind head, still a solid AU55, from the Granite Lady Hoard (NGC)

COMMENTS: The 1847 Eagle minted at Philadelphia is one of the more available issues, but remains popular and in great demand.



9090

\$10.00 1847 O (#8598).**AU50 PCGS (# 36003957)**CDN/CPG® VALUE: **\$1,310**ESTIMATE: **\$850**MIN. BID W/O BP: **\$700**

CONDITION NOTES: Medium greenish gold luster and fully defined strike, grades at AU50 due to scattered marks, but great eye appeal, from the New Orleans Gold Hoard (PCGS)

COMMENTS: The New Orleans Mint produced 571,500 \$10.00 Liberty No Motto coins in 1847, the third highest mintage of this issue and the highest of New Orleans Mint Eagles. The coinage coincided with the first U.S. postage stamps, the 5¢ and 10¢ 1847s, and a Liberty Eagle could be used to buy a 10¢ sheet.



9091

\$10.00 1847 O (#8598).**VF35 PCGS (# 36173390)**CDN/CPG® VALUE: **\$1,100**ESTIMATE: **\$750**MIN. BID W/O BP: **\$700**

CONDITION NOTES: Medium gold with some liveliness to the surface, wear commensurate with the grade, from the New Orleans Gold Hoard (PCGS)

COMMENTS: The New Orleans Mint produced 571,500 \$10.00 Liberty No Motto coins in 1847, the third highest mintage of this issue and the highest of New Orleans Mint Eagles. The coinage coincided with the first U.S. postage stamps, the 5¢ and 10¢ 1847s, and a Liberty Eagle could be used to buy a 10¢ sheet.



9092

\$10.00 1847 O (#8598).**VF35 PCGS (# 36173395)**CDN/CPG® VALUE: **\$1,100**ESTIMATE: **\$750**MIN. BID W/O BP: **\$700**

CONDITION NOTES: Greenish gold, wear commensurate with the grade, from the New Orleans Gold Hoard (PCGS)

COMMENTS: The New Orleans Mint produced 571,500 \$10.00 Liberty No Motto coins in 1847, the third highest mintage of this issue and the highest of New Orleans Mint Eagles. The coinage coincided with the first U.S. postage stamps, the 5¢ and 10¢ 1847s, and a Liberty Eagle could be used to buy a 10¢ sheet.



9093

\$10.00 1848 O (#8600).**XF40 NGC (# 1902835005)**CDN/CPG® VALUE: **\$3,750**ESTIMATE: **\$2,500**MIN. BID W/O BP: **\$2,000**

CONDITION NOTES: Medium gold and typically soft strike, shows wear but no serious abrasion marks

COMMENTS: With a mintage of only 35,850 pieces at New Orleans in 1848, this is a key mintmark/date for the Liberty Eagle series. Examples are typically well-circulated.



9094

\$10.00 1849 (#8601).**MS60 NGC (# 4305249183)****CDN/CPG® VALUE: \$3,000****ESTIMATE: \$2,000****MIN. BID W/O BP: \$1,800**

CONDITION NOTES: Lively surfaces with honey and olive gold accents, a flash of rose in angled light, light friction marks but a not insignificant contact mark in the rim at 6 o'clock, from the Granite Lady Hoard (NGC)

COMMENTS: The 1849 Eagle minted at Philadelphia is plentiful in Circulated state, but becomes much scarcer in Mint State. This base MS piece has pleasing overall appearance despite the rim dent.



9095

\$10.00 1849 (#8601).**AU55 NGC (# 4305231009)****CDN/CPG® VALUE: \$1,390****ESTIMATE: \$900****MIN. BID W/O BP: \$700**

CONDITION NOTES: Greenish gold with noticeable original crimson luster in the protected areas, detailed strike, scattered shallow friction marks, the "1" of date is missing the lower left serif, from the Granite Lady Hoard (NGC)

COMMENTS: The 1849 Eagle minted at Philadelphia is plentiful in Circulated state, but becomes much scarcer in Mint State. This Choice AU55 is quite attractive.



9096

\$10.00 1850 (Large Date) (#8603).**AU55 NGC (# 4305230099)****CDN/CPG® VALUE: \$1,380****ESTIMATE: \$900****MIN. BID W/O BP: \$700**

CONDITION NOTES: Deep gold with olive accents, well-defined strike, some scattered marks confined mainly to fields, from the Granite Lady Hoard (NGC)

COMMENTS: The Philadelphia Mint produced 291,451 gold Eagles in 1850, both Small and Large Date.



9097

\$10.00 1850 (Large Date) (#8603).

XF45 NGC (# 4305249450)

CDN/CPG® VALUE: **\$1,090**

ESTIMATE: **\$750**

MIN. BID W/O BP: **\$700**

CONDITION NOTES: Deep gold and lively surfaces, well-defined strike, wear in hair and tips of eagle's wings, from the Granite Lady Hoard (NGC)

COMMENTS: The Philadelphia Mint produced 291,451 gold Eagles in 1850, both Small and Large Date.



9098

\$10.00 1850 O (#8605).

AU55 NGC (# 3817403008)

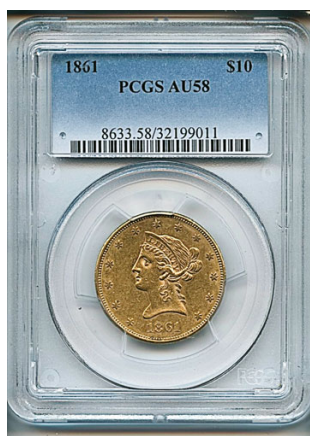
CDN/CPG® VALUE: **\$7,500**

ESTIMATE: **\$3,750**

MIN. BID W/O BP: **\$2,700**

CONDITION NOTES: Deep gold patina with distinctive crimson original luster in protected areas, solid strike, some scattered marks and hairlines in fields, still a very strong AU55, from the New Orleans Gold Hoard (NGC)

COMMENTS: 57,500 gold Eagles were minted at New Orleans in 1850. The great rarity of Mint State pieces makes this AU55 quite desirable. PCGS reports 12 at AU55, 8 AU58 and 3 in any MS grade. NGC reports 36 at AU55, 17 at AU58 and 3 in MS60 grade (none higher).



9099

\$10.00 1861 (#8633).

AU58 PCGS (# 32199011)

CDN/CPG® VALUE: **\$3,750**

ESTIMATE: **\$2,400**

MIN. BID W/O BP: **\$2,000**

CONDITION NOTES: Brilliant honey-gold semi-reflective luster, sharply detailed strike, scattered contact marks but none particularly distracting, this is every bit as attractive as base Mint State pieces we've seen

COMMENTS: 113,164 gold Eagles were minted at Philadelphia in 1861, the first year of the Civil War.



9100

\$10.00 1861 (#8633).

AU55 NGC (# 4243552007)

CDN/CPG® VALUE: **\$2,560**

ESTIMATE: **\$1,600**

MIN. BID W/O BP: **\$1,400**

CONDITION NOTES: Honey-gold semi-reflective luster with original rose luster around protected areas, some hairline contact marks including one on cheek, but a very strong and appealing AU55

COMMENTS: 113,164 gold Eagles were minted at Philadelphia in 1861, the first year of the Civil War.



9101

\$10.00 1895 O (#8733).

MS62 PCGS (# 82654841)

CDN/CPG® VALUE: **\$1,750**

ESTIMATE: **\$1,100**

MIN. BID W/O BP: **\$850**

CONDITION NOTES: Brilliant semi-reflective surfaces, sharp and fully detailed strike, a couple of black spots on obverse and bag marks in fields, from the New Orleans Gold Hoard (PCGS)

COMMENTS: 98,000 were minted at New Orleans in 1895. The 1895-O Liberty Eagle has become more available in AU and MS grades, due to the influx of pieces from the European bank hoards.



9102

\$10.00 1895 O (#8733).

AU58 PCGS (# 84761151)

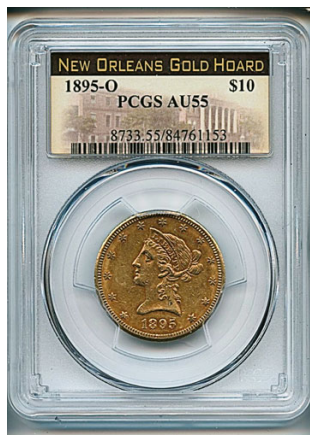
CDN/CPG® VALUE: **\$1,190**

ESTIMATE: **\$750**

MIN. BID W/O BP: **\$700**

CONDITION NOTES: Deep gold with lots of crimson around protected areas, sharp and fully detailed strike, a noticeable mark across the bridge of Liberty's nose probably keeps this from MS grade, which otherwise it certainly deserves, from the New Orleans Gold Hoard (PCGS)

COMMENTS: 98,000 were minted at New Orleans in 1895. The 1895-O Liberty Eagle has become more available in AU and MS grades, due to the influx of pieces from the European bank hoards.



9103

\$10.00 1895 O (#8733).**AU55 PCGS (# 84761153)**CDN/CPG® VALUE: **\$1,160**ESTIMATE: **\$750**MIN. BID W/O BP: **\$700**

CONDITION NOTES: Crimson gold luster with olive accents, sharp strike, no shortage of abrasion marks but very modest wear and quite attractive overall, from the New Orleans Gold Hoard (PCGS)

COMMENTS: 98,000 were minted at New Orleans in 1895. The 1895-O Liberty Eagle has become more available in AU and MS grades, due to the influx of pieces from the European bank hoards.



9104

\$10.00 1901 O (#8748).**MS63 PCGS (# 83556885)**CDN/CPG® VALUE: **\$3,380**ESTIMATE: **\$2,200**MIN. BID W/O BP: **\$1,800**

CONDITION NOTES: Lustrous honey-gold surfaces, sharp and fully detailed strike, a couple of black spots on obverse and minute bag marks in fields, from the New Orleans Gold Hoard (PCGS)

COMMENTS: 72,401 of the \$10.00 Liberty Eagle were produced at the New Orleans Mint in 1901. A substantial quantity of Uncirculated and Mint State pieces were recovered from European banks, but they become significantly scarcer at MS63 and above.



9105

\$10.00 1903 O (#8753).**MS64 PCGS (# 82653353)**CDN/CPG® VALUE: **\$5,620**ESTIMATE: **\$3,500**MIN. BID W/O BP: **\$3,250**

CONDITION NOTES: Brilliant semi-reflective honey-gold luster, sharp and fully detailed strike, minor mark on jaw, otherwise virtually mark-free, from the New Orleans Gold Hoard (PCGS)

COMMENTS: 112,771 of the \$10.00 Liberty Eagle were produced at the New Orleans Mint in 1903. A huge quantity of Uncirculated and Mint State pieces were recovered from European banks, but only 24 are graded PCGS MS64, and just two are finer (at 65+ and 66). NGC reports 7 at 64 and 1 at 65.



9106

\$10.00 1903 O (#8753).**MS62 PCGS (# 82653377)**CDN/CPG® VALUE: **\$1,390**ESTIMATE: **\$900**MIN. BID W/O BP: **\$700**

CONDITION NOTES: Honey-gold matte surfaces, sharp strike, some friction marks, including a couple on face, from the New Orleans Gold Hoard (PCGS)

COMMENTS: 112,771 of the \$10.00 Liberty Eagle were produced at the New Orleans Mint in 1903. A huge quantity of Uncirculated and Mint State pieces were recovered from European banks.



9107

\$10.00 1907 (No Motto) (#8852).**MS64 PCGS (# 50265606)**CDN/CPG® VALUE: **\$2,880**ESTIMATE: **\$1,800**MIN. BID W/O BP: **\$1,600**

CONDITION NOTES: Orange-gold luster, slight softness in the strike, pinpoint carbon spot in field to left of bust

COMMENTS: 239,406 Indian Eagles (No Motto) were minted at Philadelphia in 1907.



9108

\$10.00 1908 (Motto) (#8859).**MS64 PCGS (# 33968255)**CDN/CPG® VALUE: **\$2,590**ESTIMATE: **\$1,600**MIN. BID W/O BP: **\$1,400**

CONDITION NOTES: Brilliant honey-gold luster, sharply detailed strike, faint friction marks in fields

COMMENTS: 341,370 Indian Eagles (with Motto) were minted at Philadelphia in 1908.



9109

\$10.00 1908 D (No Motto) (#8854).**MS62 PCGS (# 35562801)**CDN/CPG® VALUE: **\$2,840**ESTIMATE: **\$1,800**MIN. BID W/O BP: **\$1,500**

CONDITION NOTES: Honey-gold luster, a bit of softness in the strike, tiny hairline on cheek

COMMENTS: 210,000 Indian Eagles (No Motto) were minted at Denver in 1908.



9110

\$10.00 1908 D (Motto) (#8860).**MS63 PCGS (# 37152923)**CDN/CPG® VALUE: **\$3,880**ESTIMATE: **\$2,500**MIN. BID W/O BP: **\$2,000**

CONDITION NOTES: Gorgeous semi-reflective rose-gold luster, sharply detailed strike, tiny negligible marks, a strong MS63

COMMENTS: 836,500 Indian Eagles (with Motto) were minted at Denver in 1908. Despite the high mintage, pieces in MS63 or higher grades are very scarce. PCGS reports 142 at MS63 and 60 higher. NGC reports 32 at MS63 and 35 higher.



9111

\$10.00 1909 (#8862).**MS63 PCGS (# 36612352)**CDN/CPG® VALUE: **\$1,720**ESTIMATE: **\$1,100**MIN. BID W/O BP: **\$850**

CONDITION NOTES: Brilliant honey-gold luster, sharply detailed strike, faint friction marks in fields

COMMENTS: 184,789 Indian Eagles were minted at Philadelphia in 1909.



9112

\$10.00 1909 D (#8863).**MS63 NGC (# 3406578002)**CDN/CPG® VALUE: **\$3,380**ESTIMATE: **\$2,200**MIN. BID W/O BP: **\$1,700**

CONDITION NOTES: Lovely bright gold semi-reflective luster, sharp strike, a few hairline marks including one on cheek

COMMENTS: 121,540 Indian Eagles were minted at Denver in 1909. PCGS reports 203 at MS63 and 53 higher. NGC reports 53 at MS63 and 30 higher.



9113

\$10.00 1910 S (#8867).**MS62 NGC (# 4480733005)**CDN/CPG® VALUE: **\$1,940**ESTIMATE: **\$1,300**MIN. BID W/O BP: **\$1,000**

CONDITION NOTES: Satiny khaki gold luster, solid strike but some softness in details, faint traces of friction

COMMENTS: 811,000 Indian Eagles were minted at San Francisco in 1910.



9114

\$10.00 1911 (#8868).**MS64 NGC (# 561819004)**CDN/CPG® VALUE: **\$1,560**ESTIMATE: **\$950**MIN. BID W/O BP: **\$700**

CONDITION NOTES: Brilliant semi-reflective luster with crimson and olive pinwheel when rotated in light, solid strike, single mark on cheek keeps this from Gem Mint State grade

COMMENTS: 505,500 Indian Eagles were minted at Philadelphia in 1911.

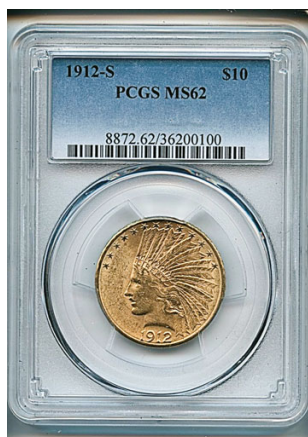


9115

\$10.00 1911 D (#8869).**AU55 NGC (# 3316998002)**CDN/CPG® VALUE: **\$3,940**ESTIMATE: **\$2,600**MIN. BID W/O BP: **\$2,100**

CONDITION NOTES: Bright yellow-gold semi-reflective luster, sharp detail, a few tiny scattered marks but really quite deserving of a higher grade

COMMENTS: A relatively low 30,100 Indian Eagles were minted at Denver in 1911.



9116

\$10.00 1912 S (#8872).**MS62 PCGS (# 36200100)**CDN/CPG® VALUE: **\$2,340**ESTIMATE: **\$1,500**MIN. BID W/O BP: **\$1,200**

CONDITION NOTES: Brilliant honey-gold semi-reflective luster, sharply detailed strike, contact marks including one on cheek

COMMENTS: 300,000 Indian Eagles were minted at San Francisco in 1912.



9117

\$10.00 1913 S (#8874).**AU55 NGC (# 3835763001)**CDN/CPG® VALUE: **\$1,910**ESTIMATE: **\$1,300**MIN. BID W/O BP: **\$1,000**

CONDITION NOTES: Honey-gold semi-reflective luster, sharp detail, shallow abrasion marks, a very strong AU55

COMMENTS: 66,000 Indian Eagles were minted at San Francisco in 1913.



9118

\$10.00 1914 (#8875).**MS63 PCGS (# 25554754)**CDN/CPG® VALUE: **\$1,500**ESTIMATE: **\$950**MIN. BID W/O BP: **\$700**

CONDITION NOTES: Gorgeous semi-reflective orange-gold luster, sharply detailed strike, tiny negligible marks including one on cheek which probably kept this from a Gem Mint State grade

COMMENTS: 151,000 Indian Eagles were minted at Philadelphia in 1914 at the start of World War I.



9119

\$10.00 1914 D (#8876).**MS64 NGC (# 3389722001)**CDN/CPG® VALUE: **\$3,250**ESTIMATE: **\$2,100**MIN. BID W/O BP: **\$1,700**

CONDITION NOTES: Lustrous rose-gold surfaces and sharp detailed strike as usual for the 1914-D Eagle

COMMENTS: 343,500 Eagles were minted in Denver at the start of World War I, and though many were melted, the pieces repatriated from Europe have supplied a reasonably large quantity for collectors. In MS64 grade, NGC reports 159 (76 higher).



9120

\$10.00 1914 S (#8877).**MS62 PCGS (# 34576887)**CDN/CPG® VALUE: **\$3,120**ESTIMATE: **\$2,100**MIN. BID W/O BP: **\$1,700**

CONDITION NOTES: Deep crimson-gold luster with olive accents, minor friction marks, a beautiful piece

COMMENTS: 208,000 Indian Eagles were minted at San Francisco in 1914 at the start of World War I.



9121

\$10.00 1915 (#8878).

MS64 PCGS (# 83248870)

CDN/CPG® VALUE: **\$2,470**

ESTIMATE: **\$1,600**

MIN. BID W/O BP: **\$1,300**

CONDITION NOTES: Beautiful semi-reflective honey-gold luster, sharply detailed strike, a rather prominent contact mark is found in the headdress, but otherwise deserving of its MS64 grade

COMMENTS: 351,000 Indian Eagles were minted at Philadelphia in 1915.



9122

\$10.00 1916 S (#8880).

MS63 PCGS (# 35125036)

CDN/CPG® VALUE: **\$6,000**

ESTIMATE: **\$4,000**

MIN. BID W/O BP: **\$3,000**

CONDITION NOTES: Satiny yellow-gold luster, solid strike but some softness in details, faint traces of friction, including a hairline scratch on cheek

COMMENTS: 138,500 Indian Eagles were minted at San Francisco in 1916.

GOLD DOUBLE EAGLES



9123

\$20.00 1850 (#8902).

XF45 PCGS (# 26268303)

CDN/CPG® VALUE: **\$3,440**

ESTIMATE: **\$2,200**

MIN. BID W/O BP: **\$1,700**

CONDITION NOTES: Medium gold with some original crimson luster in protected areas, solid strike, very minor abrasion marks, couple tiny adherences on reverse

COMMENTS: The \$20.00 Double Eagle coin was authorized by the Act of March 3, 1849, as a means to convert California gold into a medium of exchange. The first Double Eagle minted at Philadelphia for circulation is the 1850 (the unique 1849 proof in the Smithsonian Institution is a pattern). Philadelphia minted 1,170,261 for circulation in 1850. Despite the large number of Circulated pieces available to collectors, the demand for the 1850 has always been great.



9124

\$20.00 1851 O (#8905).**AU53 NGC (# 4496127004)**CDN/CPG® VALUE: **\$4,940**ESTIMATE: **\$3,250**MIN. BID W/O BP: **\$2,600**

CONDITION NOTES: Bright yellow-gold luster, some weakness in strike evident in stars, slight wear on high points, minor abrasion marks, from the New Orleans Gold Hoard

COMMENTS: 315,000 of the 1851 Double Eagle were minted at New Orleans. Mint State examples are rare, which makes About Uncirculated pieces very desirable.



9125

\$20.00 1851 O (#8905).**AU53 PCGS (# 82624051)**CDN/CPG® VALUE: **\$4,940**ESTIMATE: **\$3,250**MIN. BID W/O BP: **\$2,600**

CONDITION NOTES: Deep gold luster and detailed strike with all of the stars well defined, slight wear on high points, the fields have tiny shallow abrasion marks and there is one short mark on Liberty's temple, but this is remarkably choice for an AU53 grade

COMMENTS: 315,000 of the 1851 Double Eagle were minted at New Orleans. Mint State examples are rare, which makes About Uncirculated pieces very desirable.



9126

\$20.00 1852 (#8906).**AU50 PCGS (# 35125026)**CDN/CPG® VALUE: **\$2,400**ESTIMATE: **\$1,600**MIN. BID W/O BP: **\$1,400**

CONDITION NOTES: Deep greenish gold with hints of crimson, dark patina on high points, strong strike, marks generally limited to abrasion in fields but one scratch on jaw

COMMENTS: The 1852 is one of the more available of the early Double Eagles, owing to the discovery of shipwreck pieces.



9127

\$20.00 1853 O (#8910).**AU50 PCGS (# 34730347)**CDN/CPG® VALUE: **\$7,500**ESTIMATE: **\$4,750**MIN. BID W/O BP: **\$3,750**

CONDITION NOTES: Crimson and yellow gold luster, remarkably strong strike with minimal wear, but marks on face and in fields, from the New Orleans Gold Hoard

COMMENTS: The New Orleans Mint produced only 71,000 Double Eagles in 1853. The coins circulated in the South and territory west of the Mississippi, and About Uncirculated examples are scarce. 1853-O pieces in AU50 to 58 grades are very desirable.



9128

\$20.00 1855 (#8914).**AU50 PCGS (# 32939954)**CDN/CPG® VALUE: **\$2,460**ESTIMATE: **\$1,600**MIN. BID W/O BP: **\$1,400**

CONDITION NOTES: Deep gold with hints of crimson in protected areas, dark patina on high points, strong strike, a few deeper marks along rim and behind head, from the Granite Lady Hoard (PCGS)

COMMENTS: The Double Eagle mintages in Philadelphia and New Orleans were relatively low from 1855 to 1859, as the San Francisco Mint increased production from California gold. 364,666 Double Eagles were struck at Philadelphia for circulation in 1855.



9129

\$20.00 1857 S (Bold S) (#670715).**MS63 PCGS (# 34539790)**CDN/CPG® VALUE: **\$7,250**ESTIMATE: **\$4,750**MIN. BID W/O BP: **\$3,750**

CONDITION NOTES: Shipwreck S.S. Central America special gold case with "Pinch" of California Gold Dust (Bob Evans Signed Label), brilliant highly reflective proof-like surfaces with rose-gold highlights, some marks in field to left of bust, small marks on face

COMMENTS: Thanks to the treasure recovered from the wreck of the S.S. Central America, the 1857-S Double Eagle is available to numerous collectors (more than 5,000 were discovered). This Bold S variety (PCGS #670715) is reported in the PCGS Pop Report with 65 graded from MS 63 to MS66 (24 in 63 and 9 in 63+).



9130

\$20.00 1857 S (#8922).**AU58 NGC (# 4200693004)****CDN/CPG® VALUE: \$2,690****ESTIMATE: \$1,700****MIN. BID W/O BP: \$1,400**

CONDITION NOTES: Medium gold with traces of original luster, slight wear and a few tiny marks on face keep this one notch below Mint State

COMMENTS: Thanks to the treasure recovered from the wreck of the S.S. Central America, the 1857-S Double Eagle is available to numerous collectors (more than 5,000 were discovered).



9131

\$20.00 1857 S (#8922).**AU53 NGC (# 4294403061)****CDN/CPG® VALUE: \$2,460****ESTIMATE: \$1,600****MIN. BID W/O BP: \$1,400**

CONDITION NOTES: Deep gold accented with ample original rose luster, dark patina on high points, strong strike, abrasion marks and a deeper mark on bridge of Liberty's nose, from the Granite Lady Hoard (NGC)

COMMENTS: Thanks to the treasure recovered from the wreck of the S.S. Central America, the 1857-S Double Eagle is available to numerous collectors (more than 5,000 were discovered).



9132

\$20.00 1859 S (#8928).**XF40 PCGS (# 32926049) CAC****CDN/CPG® VALUE: \$2,320****ESTIMATE: \$1,600****MIN. BID W/O BP: \$1,400**

CONDITION NOTES: Greenish gold with some original crimson luster in the protected areas, wear is evident but no distracting marks, from the Granite Lady Hoard (PCGS)

COMMENTS: 636,445 Double Eagles were minted at San Francisco for circulation in 1859. The S.S. Central America and European bank hoards did not yield many 1859-S pieces. 67 were recovered from the S.S. Republic, which sank in 1865.



9133

\$20.00 1861 (#8932).**AU53 NGC (# 4308293033)****CDN/CPG® VALUE: \$2,470****ESTIMATE: \$1,600****MIN. BID W/O BP: \$1,400**

CONDITION NOTES: Deep gold and sharp strike, requisite marks for AU53, but none are distracting, from the Granite Lady Hoard (NGC)

COMMENTS: The 1861 was the first Double Eagle of the Civil War period, and 2,976,453 pieces were produced, the highest mintage of any pre-1904 Double Eagle. With the suspension of gold specie payments in December 1861, hoarding of gold coins resulted in a huge number of Double Eagles being salted away. Nonetheless, or perhaps because of their availability, these historic coins remain in demand by today's collectors.

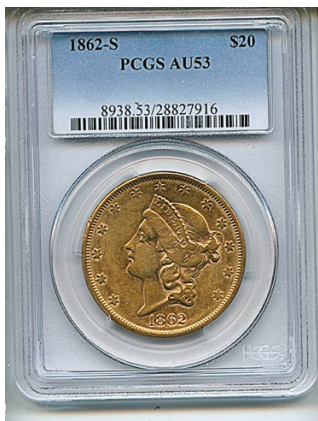


9134

\$20.00 1861 (#8932).**XF45 NGC (# 1924688020) CAC****CDN/CPG® VALUE: \$2,340****ESTIMATE: \$1,600****MIN. BID W/O BP: \$1,400**

CONDITION NOTES: Beautiful orange gold with hints of original crimson luster in protected areas, wear on high points, but minimal marks and overall wonderful eye appeal, a very strong XF45 with CAC confirmation

COMMENTS: The 1861 was the first Double Eagle of the Civil War period, and 2,976,453 pieces were produced, the highest mintage of any pre-1904 Double Eagle. With the suspension of gold specie payments in December 1861, hoarding of gold coins resulted in a huge number of Double Eagles being salted away. Nonetheless, or perhaps because of their availability, these historic coins remain in demand by today's collectors.



9135

\$20.00 1862 S (#8938).**AU53 PCGS (# 28827916)****CDN/CPG® VALUE: \$3,000****ESTIMATE: \$2,000****MIN. BID W/O BP: \$1,600**

CONDITION NOTES: Beautiful honey-gold luster and sharp strike with minimal wear, a few marks on Liberty bring the grade down, but eye appeal is excellent

COMMENTS: The 1862-S Double Eagle is now more available, thanks to the European bank hoards and pieces recovered from the S.S. Brother Jonathan and S.S. Republic, most in EF or AU grade.

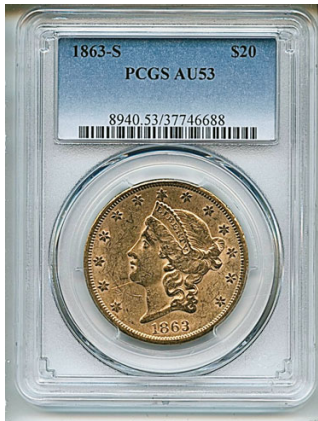


9136

\$20.00 1862 S (#8938).**AU53 NGC (# 3254375003)****CDN/CPG® VALUE: \$3,000****ESTIMATE: \$2,000****MIN. BID W/O BP: \$1,600**

CONDITION NOTES: Rich gold with hints of original crimson luster in protected areas, very minimal wear and strong strike, minor abrasion marks, a very strong AU53

COMMENTS: The 1862-S Double Eagle is now more available, thanks to the European bank hoards and pieces recovered from the S.S. Brother Jonathan and S.S. Republic, most in EF or AU grade.



9137

\$20.00 1863 S (#8940).**AU53 PCGS (# 37746688)****CDN/CPG® VALUE: \$2,750****ESTIMATE: \$1,800****MIN. BID W/O BP: \$1,400**

CONDITION NOTES: Yellow gold, detailed strike with minimal wear, a fair number of abrasion marks including a hairline across the chin, yet overall an attractive piece

COMMENTS: 966,570 of this Civil War era Double Eagle were minted at San Francisco and circulated in the West. Once rarely seen in the collector market, the pieces salvaged from shipwrecks have made the 1862-S more available, but it remains a desirable and historic Double Eagle.



9138

\$20.00 1864 S (#8942).**AU55 PCGS (# 32940004)****CDN/CPG® VALUE: \$3,120****ESTIMATE: \$2,000****MIN. BID W/O BP: \$1,600**

CONDITION NOTES: Beautiful orange-gold with hints of original crimson luster in protected areas, modest wear, minor abrasion marks mostly confined to slight scratches in fields, from the Granite Lady Hoard (PCGS)

COMMENTS: 793,660 Double Eagles were minted at San Francisco for circulation in 1864. This Civil War era Type I Double Eagle was a great rarity until quantities were salvaged from the wrecks of the S.S. Brother Jonathan and S.S. Republic. A scarce coin in About Uncirculated or Mint State - from the Granite Lady Hoard (PCGS).



9139

\$20.00 1865 S (#8944).**XF45 NGC (# 4518647005)****CDN/CPG® VALUE: \$2,310****ESTIMATE: \$1,600****MIN. BID W/O BP: \$1,400**

CONDITION NOTES: Greenish gold, very minimal wear and strong strike, minor abrasion marks including a mark on cheek, this appears far better than its XF45 grade

COMMENTS: 1,042,500 Double Eagles were minted at San Francisco in 1865, the last year of the Civil War. Once a great rarity, the wreck of the S.S. Brother Jonathan yielded 600 Mint State 1865-S Double Eagles, and subsequently the S.S. Republic returned another 939 pieces to the market. Despite its availability, the historic 1865-S remains one of the most desirable Type I Double Eagles.



9140

\$20.00 1866 S (Motto) (#8950).**AU55 NGC (# 4307897010)****CDN/CPG® VALUE: \$8,120****ESTIMATE: \$4,500****MIN. BID W/O BP: \$3,500**

CONDITION NOTES: Greenish gold and sharp strike, very minor wear, most of the abrasion marks are shallow and not distracting, a choice example of the 1866-S Motto

COMMENTS: The 1866 Double Eagle was the first issue of the Reconstruction era. 842,250 of the 1866 With Motto were struck at the San Francisco Mint. Most of the pieces that survive are in VF or EF grades. In AU55, NGC reports 154 plus 3 at 55+ (145 higher). This is an extremely desirable choice AU example of the first Double Eagle inscribed "In God We Trust."

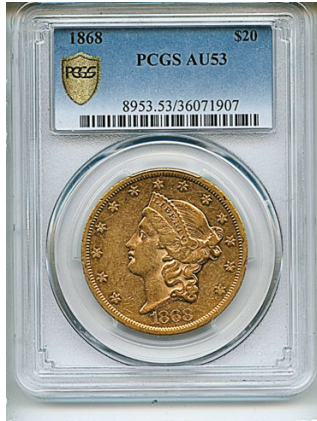


9141

\$20.00 1867 S (#8952).**AU53 NGC (# 4496196009)****CDN/CPG® VALUE: \$2,340****ESTIMATE: \$1,600****MIN. BID W/O BP: \$1,500**

CONDITION NOTES: Beautiful orange-gold satiny luster, modest wear, negligible abrasion marks (all hairline or shallow), a very strong AU53

COMMENTS: 920,750 Double Eagles were minted at San Francisco facility for circulation in 1867. About 900 pieces have been graded in About Uncirculated state at NGC, which reflects the influx of coins from Europe and other sources. Still, examples in mid-grade AU condition are desirable.



9142

\$20.00 1868 (#8953).**AU53 PCGS (# 36071907)****CDN/CPG® VALUE: \$8,120****ESTIMATE: \$5,250****MIN. BID W/O BP: \$4,250**

CONDITION NOTES: Incredible orange-gold luster, detailed strike, minimal wear and marks limited to tiny shallow abrasion marks, a beautiful 1868 with eye appeal that goes well beyond its AU53 grade

COMMENTS: Only 98,575 Double Eagles were minted at Philadelphia in 1868, dwarfed by the high-volume production at the San Francisco Mint. Numismatists consider the 1868 to be the scarcest Type II Liberty Double Eagle from the Philadelphia Mint (Bowers).



9143

\$20.00 1868 S (#8954).**AU58 NGC (# 603344001)****CDN/CPG® VALUE: \$3,250****ESTIMATE: \$2,200****MIN. BID W/O BP: \$1,700**

CONDITION NOTES: Brilliant honey-gold luster, sharp details, a few minor marks on face, the fields are mainly clear, a strong AU58

COMMENTS: 837,500 Double Eagles were minted at San Francisco in 1868, a relatively large production total. The majority of About Uncirculated pieces have been repatriated from European bank hoards. Examples in AU58 are scarce, and Mint State pieces are very rare (Winter and Fuljenz).



9144

\$20.00 1869 S (#8956).**AU55 NGC (# 4483923006)****CDN/CPG® VALUE: \$2,360****ESTIMATE: \$1,600****MIN. BID W/O BP: \$1,400**

CONDITION NOTES: Deep orange gold with greenish hue and some areas of dark patina, detailed strike with very negligible wear, light friction marks on cheek but overall great eye appeal

COMMENTS: 686,750 Double Eagles were minted at San Francisco for circulation in 1869. The population for AU and MS pieces is in the 500-600 range, but choice AUs are quite desirable and sell for a modest premium over melt, making these very affordable examples of a scarce San Francisco Double Eagle.

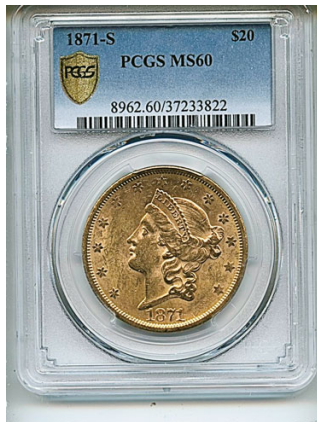


9145

\$20.00 1870 S (#8959).**AU58 NGC (# 4244211004)****CDN/CPG® VALUE: \$2,720****ESTIMATE: \$1,800****MIN. BID W/O BP: \$1,400**

CONDITION NOTES: Intense rose-gold and sharp detailed strike, abrasion marks are numerous but shallow and not distracting, a few small dark spots on both sides, very original and attractive

COMMENTS: 982,000 Double Eagles were minted at San Francisco for circulation in 1870. About 75% of the 1,650 1870-s pieces graded by NGC fall into the About Uncirculated class. These undoubtedly entered the market from European bank hoards.

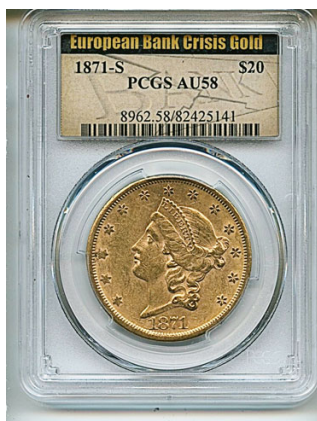


9146

\$20.00 1871 S (#8962).**MS60 PCGS (# 37233822)****CDN/CPG® VALUE: \$3,250****ESTIMATE: \$2,100****MIN. BID W/O BP: \$1,700**

CONDITION NOTES: Brilliant gold with hints of original crimson luster in protected areas and dark patina in high spots, detailed strike, couple of marks in obverse fields and on reverse

COMMENTS: 928,000 Double Eagles were minted at San Francisco for circulation in 1871. The 1871-S is considerably more difficult to obtain in Mint State, even with the European bank hoards counted (NGC 142 in all MS grades).



9147

\$20.00 1871 S (#8962).**AU58 PCGS (# 82425141)****CDN/CPG® VALUE: \$2,110****ESTIMATE: \$1,600****MIN. BID W/O BP: \$1,400**

CONDITION NOTES: Bright yellow-gold luster with hints of dark patina on high points, sharp strike, a few more prominent marks in fields, some discoloration on reverse, from the European Bank Crisis Gold (PCGS)

COMMENTS: 928,000 Double Eagles were minted at San Francisco for circulation in 1871. This is one of the pieces repatriated from European banks. It is the highest grade possible before the leap into Mint State territory.



9148

\$20.00 1872 (#8963).**AU55 NGC (# 4196689019)****CDN/CPG® VALUE: \$2,380****ESTIMATE: \$1,600****MIN. BID W/O BP: \$1,400**

CONDITION NOTES: Deep gold with dark patina on high points, some crimson luster on reverse, abrasion marks on obverse and a diagonal line across reverse, from the European Bank Crisis Gold (NGC)

COMMENTS: 251,850 Double Eagles were minted for circulation at Philadelphia, about one third the quantity struck at the San Francisco Mint. The majority of pieces in collectors' hands come from repatriated gold sent to Europe.

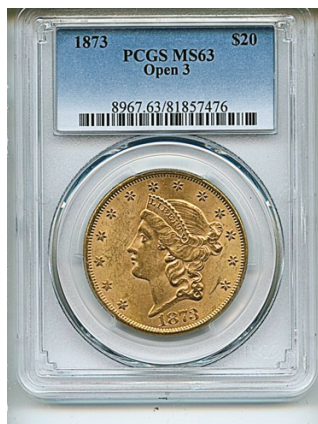


9149

\$20.00 1872 S (#8965).**MS60 NGC (# 5766305008)****CDN/CPG® VALUE: \$2,780****ESTIMATE: \$1,800****MIN. BID W/O BP: \$1,400**

CONDITION NOTES: Honey-gold with some dark patina on high points, strong strike, some more noticeable marks in the field to the left of face, still an appealing piece

COMMENTS: The San Francisco Mint produced 780,000 Double Eagles for circulation in 1872. A portion of the total output was sent to Europe and later repatriated. Fewer than 200 Mint State pieces have been graded by NGC.



9150

\$20.00 1873 (Open 3) (#8967).**MS63 PCGS (# 81857476)****CDN/CPG® VALUE: \$4,500****ESTIMATE: \$3,000****MIN. BID W/O BP: \$2,400**

CONDITION NOTES: Smooth orange-gold surfaces, strong and well-defined strike with all stars showing radials, negligible tiny bag marks on obverse and the reverse is virtually mark-free, a magnificent piece that presents even better than its formidable MS63 grade

COMMENTS: The 1873 Open 3 minted at Philadelphia was not among the issues salvaged from the major shipwrecks (S.S. Republic, Central America, and Brother Jonathan). The majority of pieces in collectors' hands today, including this example, come from European bank hoards. Considerably scarcer in grades of MS63 or better (approximately 300-400 pieces total between PCGS and NGC).



9151

\$20.00 1873 (Open 3) (#8967).**MS61 NGC (# 4304174040)****CDN/CPG® VALUE: \$2,210****ESTIMATE: \$1,600****MIN. BID W/O BP: \$1,400**

CONDITION NOTES: Deep gold with some dark patina on high points, very sharp strike with radials of all stars clearly defined, light friction marks on obverse and cross-hatch lines on reverse, from the Granite Lady Hoard (NGC)

COMMENTS: The 1873 Open 3 minted at Philadelphia was not among the issues salvaged from the major shipwrecks (S.S. Republic, Central America, and Brother Jonathan). The majority of pieces in collectors' hands today, including this example, come from European bank hoards.



9152

\$20.00 1874 (#8970).**MS60 NGC (# 4304230049)****CDN/CPG® VALUE: \$2,180****ESTIMATE: \$1,600****MIN. BID W/O BP: \$1,400**

CONDITION NOTES: Bright gold accented with dark patina on higher points, sharply defined strike, a few marks on the face bring this down a notch or two to MS60, from the Granite Lady Hoard (NGC)

COMMENTS: The economic impact of the Panic of 1873 lasted well into 1874, and the output of Double Eagles consequently dropped to 366,780 in that year from 1.4 million the previous year. NGC has graded about 365 Mint State 1874 Double Eagles.



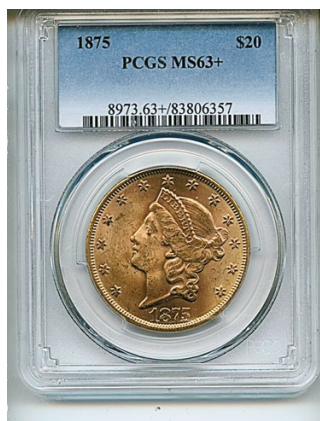
9153

\$20.00 1874 S (#8972).**MS61 NGC (# 4304174004)****CDN/CPG® VALUE: \$2,380****ESTIMATE: \$1,600****MIN. BID W/O BP: \$1,400**

CONDITION NOTES: Deep gold with some dark patina on high points, strong strike with well-defined stars, some minor marks in fields and one on cheek, still a strong MS61, from the Granite Lady Hoard (NGC)

COMMENTS: In the aftermath of the Panic of 1873 the San Francisco Mint still produced 1,214,000 Double Eagles for circulation in 1874, the majority of which was sent overseas. When those pieces were returned to the U.S., hundreds of Mint State 1874-S Double Eagles entered the collector market. Nonetheless, they feed the strong demand for Type IIs.

9154

**\$20.00 1875 (#8973).****MS63+ PCGS (# 83806357)**CDN/CPG® VALUE: **\$5,620**ESTIMATE: **\$3,750**MIN. BID W/O BP: **\$3,000**

CONDITION NOTES: Satiny rose-gold luster and detailed strike with well-defined radials on every star (typical softness in center curls), very light abrasion marks in fields and a couple of hairlines on face prevent this from making the MS64 grade, but 63+ reflects the brilliance and quality of this piece

COMMENTS: 295,720 Double Eagles were produced by the Philadelphia Mint for circulation in 1875. Although a large number have been repatriated from European bank hoards, the PCGS Pop Report for 1875 shows only 6 graded 63+ (plus 84 at 63) and 5 at 64 (the highest grade). NGC shows 25 at 63 and 5 at 64 (plus one 66, the highest grade). Clearly the 1875 is a rarity in this premium Mint State grade.

9155

**\$20.00 1875 S (#8975).****MS61 NGC (# 4304174071)**CDN/CPG® VALUE: **\$2,210**ESTIMATE: **\$1,600**MIN. BID W/O BP: **\$1,400**

CONDITION NOTES: Deep gold, well-defined strike, scattered abrasion marks, mostly of a shallow and trivial nature, still a strong MS61, from the Granite Lady Hoard (NGC)

COMMENTS: There is no denying that the 1875-S (and 1876-S) Double Eagle exists in huge quantities, even in Mint State grades of 60 or 61, thanks to the hoards of pieces returned from Europe. For the collector seeking an attractive Type II in Mint State, this is an excellent value at a small premium over melt.

9156

**\$20.00 1876 (#8976).****MS62 PCGS (# 21503892)**CDN/CPG® VALUE: **\$2,750**ESTIMATE: **\$1,800**MIN. BID W/O BP: **\$1,400**

CONDITION NOTES: Orange-gold semi-reflective luster, strong strike with well-defined obverse details, some weakness in the motto, a minimal amount of friction marks and none distracting, very strong MS62

COMMENTS: 583,860 Double Eagles were minted in the Centennial year 1876 at the Centennial city Philadelphia Mint. The number of 1876 Double Eagles in Mint State 62 and higher is relatively low compared with the 1876-S. This is a choice MS62 piece from the last year of the Type II Double Eagle.



9157

\$20.00 1877 (#8982).**MS62 PCGS (# 5777188)****CDN/CPG® VALUE: \$3,340****ESTIMATE: \$2,200****MIN. BID W/O BP: \$1,700**

CONDITION NOTES: Beautiful rose-gold luster with hints of crimson in places, magnificently detailed strike, minor abrasion marks except for one in field behind bust, appears better than its MS62 grade

COMMENTS: In 1877 the Double Eagle design was modified, most notably by spelling out "Twenty Dollars." 397,650 of the new Type III Double Eagles were minted for circulation at Philadelphia. The majority of repatriated Mint State pieces from European banks are graded 60 or 61. This MS62 piece is considerably scarcer.

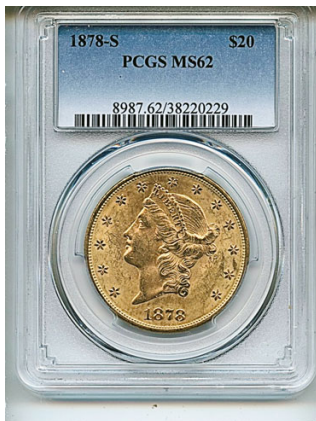


9158

\$20.00 1878 (#8985).**MS61 NGC (# 3770830002)****CDN/CPG® VALUE: \$2,330****ESTIMATE: \$1,600****MIN. BID W/O BP: \$1,400**

CONDITION NOTES: Bright semi-reflective rose-gold luster, extraordinarily detailed strike with Liberty's curls sharply defined, scattered shallow abrasion marks, one slightly deeper in the hair at back of head noted only to emphasize how negligible they are, a strong MS61

COMMENTS: Hundreds of the 1878 Double Eagle can be found in Mint State grades, thanks to the return of large quantities from Europe. Nonetheless, it is an ideal Type III for the collector who wants to obtain a choice piece at a small premium over melt.



9159

\$20.00 1878 S (#8987).**MS62 PCGS (# 38220229)****CDN/CPG® VALUE: \$3,880****ESTIMATE: \$2,500****MIN. BID W/O BP: \$2,000**

CONDITION NOTES: Honey-gold with some dark patina on high points, very detailed strike, scattered but mostly shallow abrasion marks, one slightly deeper mark on cheek, but still a well-qualified MS62 piece

COMMENTS: The ubiquitous 1878-S Double Eagle from European bank hoards can be found in Mint State grades 60 and 61, but the population drops precipitously from 62 and up. This MS62 is one of the more desirable pieces.



9160

\$20.00 1879 (#8988).**MS61 NGC (# 5230459003)****CDN/CPG® VALUE: \$2,560****ESTIMATE: \$1,600****MIN. BID W/O BP: \$1,400**

CONDITION NOTES: Lovely color which reflects some original rose luster when angled in light, sharp details, couple discolored spots on back, a few marks on face, nice eye appeal

COMMENTS: From a mintage of 207,600, the total number of graded Philadelphia Mint 1879 Double Eagles is much lower than for other years, thus it is safe to assume that the quantity repatriated from Europe was smaller — in Mint State there are roughly 500 graded by PCGS and 280 by NGC.

9161

\$20.00 1879 S (#8991).**MS61 PCGS (# 25681291)****CDN/CPG® VALUE: \$3,750****ESTIMATE: \$2,500****MIN. BID W/O BP: \$2,000**

CONDITION NOTES: Gorgeous orange-gold with crimson hue of original luster visible in angled light, remarkably sharp detail, very minor marks in fields with one slightly deeper mark to the left of forehead—frankly this seems worthy of a grade higher than MS61

COMMENTS: Despite a large quantity minted at San Francisco in 1879 (more than 1.2 million), and the return of pieces from Europe, the 1879-S Type III Double Eagle is scarce in grades of MS61 or 62, and it is rare above that. The highest NGC grade is 62 (54 pieces) and the highest PCGS grade is 64 and 64+ (one each). In our opinion, this is a very strong 61, which could possibly notch up a grade.



9162

\$20.00 1879 S (#8991).**MS61 NGC (# 4868352020)****CDN/CPG® VALUE: \$3,750****ESTIMATE: \$2,500****MIN. BID W/O BP: \$2,000**

CONDITION NOTES: Brilliant gold with some original crimson luster in protected areas and slightly dark patina on high points, friction marks, an attractive 1879-S

COMMENTS: Despite a large quantity minted at San Francisco in 1879 (more than 1.2 million), and the return of pieces from Europe, the 1879-S Type III Double Eagle is scarce in grades of MS61 or 62, and it is rare above that. The highest NGC grade is 62 (54 pieces) and the highest PCGS grade is 64 and 64+ (one each). This MS61 serves as a useful comparison piece to the PCGS-graded MS61 offered in the previous lot.





9163

\$20.00 1880 S (#8993).**MS61 NGC (# 3036137003)****CDN/CPG® VALUE: \$3,750****ESTIMATE: \$2,500****MIN. BID W/O BP: \$2,000**

CONDITION NOTES: Gorgeous semi-reflective gold with original crimson luster in protected areas, very minor marks, exceptionally choice for its MS61 grade

COMMENTS: 836,000 Double Eagles were minted at San Francisco in 1880. The 1880-S is considerably scarcer in Mint State than other late San Francisco Double Eagles. In our opinion, this piece is very conservatively graded at MS61, and could possibly notch up to 62.



9164

\$20.00 1880 S (#8993).**MS61 PCGS (# 36105191)****CDN/CPG® VALUE: \$3,750****ESTIMATE: \$2,500****MIN. BID W/O BP: \$2,000**

CONDITION NOTES: Rose gold with original crimson luster in protected areas, friction marks with a few deeper ones on face

COMMENTS: 836,000 Double Eagles were minted at San Francisco in 1880. The 1880-S is considerably scarcer in Mint State than other late San Francisco Double Eagles.



9165

\$20.00 1881 S (#8995).**MS61 NGC (# 124751013)****CDN/CPG® VALUE: \$2,530****ESTIMATE: \$1,600****MIN. BID W/O BP: \$1,400**

CONDITION NOTES: Rose gold, abrasion marks with a couple more prominent ones on face

COMMENTS: 727,000 Double Eagles were minted at San Francisco in 1881.



9166

\$20.00 1881 S (#8995).**MS61 PCGS (# 36039298)**CDN/CPG® VALUE: **\$2,530**ESTIMATE: **\$1,600**MIN. BID W/O BP: **\$1,400**

CONDITION NOTES: Honey-gold with hints of rose in angled light, couple deeper marks on cheek and in field at right, but the field at left is only lightly marked

COMMENTS: 727,000 Double Eagles were minted at San Francisco in 1881.

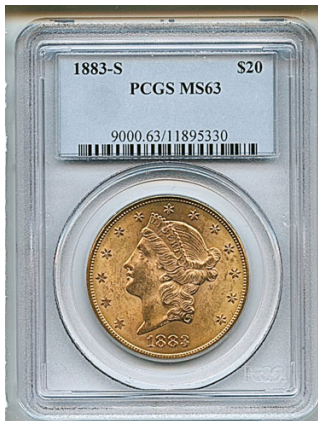


9167

\$20.00 1882 S (#8998).**MS62 NGC (# 139005011)**CDN/CPG® VALUE: **\$3,000**ESTIMATE: **\$2,000**MIN. BID W/O BP: **\$1,600**

CONDITION NOTES: Honey-gold with lots of rose in angled light, sharply defined strike, slight friction chatter and a mildly distracting diagonal mark in the field at right

COMMENTS: A large number of Double Eagles—1,125,000—were minted at San Francisco in 1882. Most of the high-grade pieces come from European bank hoards.



9168

\$20.00 1883 S (#9000).**MS63 PCGS (# 11895330)**CDN/CPG® VALUE: **\$4,500**ESTIMATE: **\$3,000**MIN. BID W/O BP: **\$2,400**

CONDITION NOTES: Beautiful orange gold with flashes of original crimson luster, sharply defined strike, barest traces of friction

COMMENTS: A large number of Double Eagles—1,189,000—were minted at San Francisco in 1883. Most of the high-grade pieces come from European bank hoards. NGC reports 94 MS63 and 3 64+ (7 higher, but none better than MS64), and PCGS 275 MS64 and 17 64+ (16 higher, none over 64+).



9169

\$20.00 1884 S (#9002).**MS63 PCGS (# 21074007)**CDN/CPG® VALUE: **\$3,500**ESTIMATE: **\$2,300**MIN. BID W/O BP: **\$1,800**

CONDITION NOTES: Gorgeous honey and rose gold luster, sharp strike, minimal friction marks with the most obvious being a diagonal scratch in the left field

COMMENTS: 916,000 Double Eagles were minted at San Francisco in 1884. NGC and PCGS report a combined total of approximately 600 in MS63 and 63+ grades (50 higher).



9170

\$20.00 1885 S (#9005).**MS63 PCGS (# 6624967)**CDN/CPG® VALUE: **\$3,060**ESTIMATE: **\$2,000**MIN. BID W/O BP: **\$1,600**

CONDITION NOTES: Honey-gold with rose accents in angled light, sharp strike, scattered marks on both surfaces, one on cheek, others mainly confined to fields

COMMENTS: 683,500 Double Eagles were minted at San Francisco in 1885.

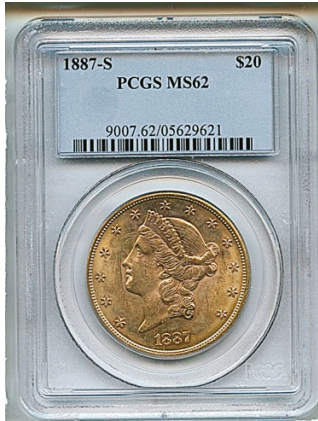


9171

\$20.00 1885 S (#9005).**MS62 NGC (# 3775070042)**CDN/CPG® VALUE: **\$2,480**ESTIMATE: **\$1,600**MIN. BID W/O BP: **\$1,400**

CONDITION NOTES: Honey-gold that flashes rose in angled light, sharp strike, a few scattered marks on both surfaces

COMMENTS: 683,500 Double Eagles were minted at San Francisco in 1885.

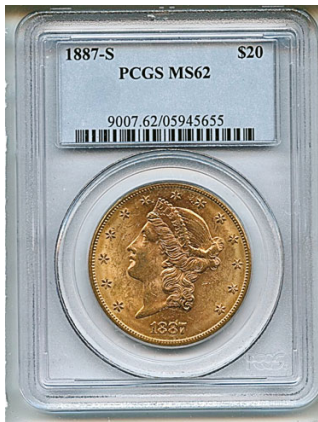


9172

\$20.00 1887 S (#9007).**MS62 PCGS (# 5629621)**CDN/CPG® VALUE: **\$4,000**ESTIMATE: **\$2,600**MIN. BID W/O BP: **\$2,000**

CONDITION NOTES: Rose gold with gorgeous original luster, minimal abrasion marks, so few we wonder if this qualifies for an MS63 grade

COMMENTS: 283,000 Double Eagles were minted at San Francisco in 1887. High-grade examples are scarce. NGC reports only 214 MS62 and 27 MS63 (none higher). PCGS reports 502 MS62 and 16 62+ (84 higher).



9173

\$20.00 1887 S (#9007).**MS62 PCGS (# 5945655)**CDN/CPG® VALUE: **\$4,000**ESTIMATE: **\$2,600**MIN. BID W/O BP: **\$2,000**

CONDITION NOTES: Rose gold with gorgeous original luster, scattered abrasion marks

COMMENTS: 283,000 Double Eagles were minted at San Francisco in 1887. High-grade examples are scarce. NGC reports only 214 MS62 and 27 MS63 (none higher). PCGS reports 502 MS62 and 16 62+ (84 higher).



9174

\$20.00 1888 S (#9008).**MS62+ PCGS (# 83875355)**CDN/CPG® VALUE: **\$2,450**ESTIMATE: **\$1,600**MIN. BID W/O BP: **\$1,400**

CONDITION NOTES: Honey-gold that flashes rose in angled light, some darker patina on face, sharp strike, some friction chatter and a few tiny marks

COMMENTS: 859,600 Double Eagles were minted at San Francisco in 1888. Although NGC and PCGS report nearly 1,200 pieces graded at MS62, between them only 9 are graded 62+ (and 302 higher).

9175

\$20.00 1890 (#9013).**MS63 PCGS (# 25676117)**CDN/CPG® VALUE: **\$7,090**ESTIMATE: **\$4,500**MIN. BID W/O BP: **\$3,500**

CONDITION NOTES: Deep gold with original luster that flashes crimson in angled light, sharp strike, the surfaces are virtually free of any distracting marks, a few tiny diagonal lines visible in field at right in angled light and one contact mark at top of head, a strong MS63 (MS64 candidate?) and outstanding example of this scarce and desirable Type II year

COMMENTS: Only 75,940 Double Eagles were struck at the Philadelphia Mint in 1890, making this year one of the “keys” of the series. Discoveries in the past few decades have brought a decent supply to market in grades up to MS62. However, from MS63 the 1890 becomes very scarce. NGC reports 27 at MS63 27 and 2 at 63+ (4 higher). PCGS reports 57 MS63 and one at 63+ (7 higher).



9176

\$20.00 1891 S (#9018).**MS64 NGC (# 598763016)**CDN/CPG® VALUE: **\$4,530**ESTIMATE: **\$3,000**MIN. BID W/O BP: **\$2,400**

CONDITION NOTES: Honey-gold with lots of rose accents and original luster, sharp strike, some friction chatter on face but virtually no distracting marks

COMMENTS: A large number of Double Eagles—1,288,125—were minted at San Francisco in 1891. Most of the high-grade pieces come from European bank hoards. NGC reports 72 MS64, one 64+ and 2 65 (none higher). PCGS reports 147 MS64, 7 64+ and one 65 (none higher). Therefore, this 1891-S in MS64 grade may be considered legitimately scarce.



9177

\$20.00 1892 S (#9021).**MS64 PCGS (# 50203147)**CDN/CPG® VALUE: **\$6,250**ESTIMATE: **\$4,000**MIN. BID W/O BP: **\$3,250**

CONDITION NOTES: Honey-gold that flashes rose in angled light, sharp strike, some moderate friction chatter and a few tiny marks

COMMENTS: The 1892-S Liberty Double Eagle (930,150 minted) is considerably scarcer in MS64 or better grades. NGC reports 63 MS64 and 9 at 64+ (8 higher). PCGS reports 147 MS64 and 7 at 64+ (only one higher).





9178

\$20.00 1893 S (#9024).**MS63+ PCGS (# 34817461)**CDN/CPG® VALUE: **\$2,810**ESTIMATE: **\$1,800**MIN. BID W/O BP: **\$1,400**

CONDITION NOTES: Orange gold with hints of crimson, sharp strike, minor abrasion marks, diagonal lines in surface visible in angled light

COMMENTS: 996,175 Double Eagles were minted at San Francisco in 1893.



9179

\$20.00 1893 S (#9024).**MS64 PCGS (# 4413025)**CDN/CPG® VALUE: **\$7,030**ESTIMATE: **\$4,500**MIN. BID W/O BP: **\$3,500**

CONDITION NOTES: Deep honey-gold with original luster that flashes crimson in angled light, sharp strike, the surfaces have a few negligible tiny shallow marks, a gorgeous 1893-S

COMMENTS: 996,175 Double Eagles were minted at San Francisco in 1893. Although abundantly available through MS63, the 1893-S becomes very scarce in grades of MS64 or higher. PCGS reports 67 at MS64 and 2 at 64+. NGC reports only 24 at MS64 and none higher.



9180

\$20.00 1894 (#9025).**MS64 PCGS (# 35674407)**CDN/CPG® VALUE: **\$4,030**ESTIMATE: **\$2,600**MIN. BID W/O BP: **\$2,000**

CONDITION NOTES: Honey-gold with hues of rose and olive in angled light, sharp strike, it takes a careful search to find a couple of contact marks with a couple of short hairlines on face and neck, and a deeper mark on reverse in field above "Dollars", a beautiful Type III which is superior to the other MS64 1894s we surveyed

COMMENTS: A large number of Double Eagles—1,368,940—were minted at Philadelphia in 1894. Massive quantities of pieces come from European bank hoards, but these are almost all MS61, 62 and 63. NGC reports 133 MS64 and 4 at 64+/64PL (8 higher). PCGS reports 167 MS64, 21 64+ and 4 65 (none higher).



9181

\$20.00 1895 (#9027).**MS64 NGC (# 677263002)**CDN/CPG® VALUE: **\$2,500**ESTIMATE: **\$1,600**MIN. BID W/O BP: **\$1,400**

CONDITION NOTES: Brilliant orange-gold luster with semi-reflective surfaces, sharp strike, minor friction chatter and tiny marks in hair on back of head

COMMENTS: A large number of Double Eagles—1,114,605—were minted at Philadelphia in 1895. Massive quantities of pieces come from European bank hoards, but these are almost all MS61, 62 and 63.



9182

\$20.00 1895 S (#9028).**MS64 PCGS (# 25298945)**CDN/CPG® VALUE: **\$3,780**ESTIMATE: **\$2,500**MIN. BID W/O BP: **\$2,000**

CONDITION NOTES: Semi-reflective orange-gold luster and sharp strike, a few contact marks including two on jaw, a couple in fields below curls and behind head

COMMENTS: A large number of Double Eagles—1,143,500—were minted at San Francisco in 1895. Massive quantities of pieces come from European bank hoards, but these are almost all MS61, 62 and 63. NGC reports 172 at MS64 and only 11 higher between 65 and 66. PCGS reports 249 MS64 and 25 at 64+ with only 10 higher (65/65+ highest).



9183

\$20.00 1896 S (#9030).**MS64 NGC (# 1868696006)**CDN/CPG® VALUE: **\$3,690**ESTIMATE: **\$2,500**MIN. BID W/O BP: **\$2,000**

CONDITION NOTES: Honey-gold with hues of rose and olive in angled light, sharp strike, a few minute and negligible contact marks but virtually no friction evident in this MS64 piece

COMMENTS: A large number of Double Eagles—1,403,925—were minted at San Francisco in 1896. Massive quantities of pieces come from European bank hoards, but these are almost all MS61, 62 and 63. NGC reports 187 at MS64 and only 3 higher at 65. PCGS reports 201 MS64 and 7 at 64+ with only 3 higher (67 highest).



9184

\$20.00 1897 (#9031).**MS64 PCGS (# 84960833) CAC**CDN/CPG® VALUE: **\$3,310**ESTIMATE: **\$2,100**MIN. BID W/O BP: **\$1,700**

CONDITION NOTES: Honey-gold with rose accents, sharp strike, very light friction chatter but almost complete free of contact marks

COMMENTS: A large number of Double Eagles—1,383,175—were minted at Philadelphia in 1897. Massive quantities of pieces come from European bank hoards, but these are almost all MS61, 62 and 63. NGC reports 365 at MS64 and 15 at 65 (none higher). PCGS reports 331 MS64 and 24 at 64+ with only 9 higher (65/65+ highest).



9185

\$20.00 1897 S (#9032).**MS64 PCGS (# 84111250)**CDN/CPG® VALUE: **\$2,500**ESTIMATE: **\$1,600**MIN. BID W/O BP: **\$1,400**

CONDITION NOTES: Deep honey-gold with olive and rose accents, sharp strike, shallow friction traces

COMMENTS: A large number of Double Eagles—1,470,250—were minted at San Francisco in 1897. Massive quantities of pieces come from European bank hoards, but these are almost all MS61, 62 and 63. NGC reports 365 at MS64 and 15 at 65 (none higher). PCGS reports 331 MS64 and 24 at 64+ with only 9 higher (65/65+ highest).



9186

\$20.00 1897 S (#9032).**MS64 PCGS (# 84111297)**CDN/CPG® VALUE: **\$2,500**ESTIMATE: **\$1,600**MIN. BID W/O BP: **\$1,400**

CONDITION NOTES: Deep honey-gold with olive and rose accents, darker patina on bust, sharp strike, trivial friction chatter

COMMENTS: A large number of Double Eagles—1,470,250—were minted at San Francisco in 1897. Massive quantities of pieces come from European bank hoards, but these are almost all MS61, 62 and 63. NGC reports 365 at MS64 and 15 at 65 (none higher). PCGS reports 331 MS64 and 24 at 64+ with only 9 higher (65/65+ highest).



9187

\$20.00 1897 S (#9032).**MS64 PCGS (# 84357967)**CDN/CPG® VALUE: **\$2,500**ESTIMATE: **\$1,600**MIN. BID W/O BP: **\$1,400**

CONDITION NOTES: Deep honey-gold with olive and rose accents, darker patina on bust, sharp strike, trivial friction chatter

COMMENTS: A large number of Double Eagles—1,470,250—were minted at San Francisco in 1897. Massive quantities of pieces come from European bank hoards, but these are almost all MS61, 62 and 63. NGC reports 365 at MS64 and 15 at 65 (none higher). PCGS reports 331 MS64 and 24 at 64+ with only 9 higher (65/65+ highest).



9188

\$20.00 1898 S (#9034).**MS64 NGC (# 1719670017)**CDN/CPG® VALUE: **\$2,310**ESTIMATE: **\$1,600**MIN. BID W/O BP: **\$1,400**

CONDITION NOTES: Brilliant honey-gold with olive and rose accents, sharp strike, trivial friction chatter and slightly discolored arc in field at lower right

COMMENTS: More than 2.5 million Double Eagles were minted at San Francisco in 1898, and examples are plentiful in grades through MS64.



9189

\$20.00 1899 (#9035).**MS64+ NGC (# 4597920010)**CDN/CPG® VALUE: **\$2,380**ESTIMATE: **\$1,600**MIN. BID W/O BP: **\$1,400**

CONDITION NOTES: Deep orange-gold with crimson accents, sharp strike, very faint abrasion traces except for a deeper contact mark between the 9th and 10th stars at 2 o'clock

COMMENTS: 1,669,300 Double Eagles were minted at Philadelphia in 1899, and examples are plentiful in grades through MS64.



9190

\$20.00 1899 (#9035).**MS64 PCGS (# 21317645)**CDN/CPG® VALUE: **\$2,380**ESTIMATE: **\$1,600**MIN. BID W/O BP: **\$1,400**

CONDITION NOTES: Honey and rose gold, sharp strike, almost complete free of contact marks but diagonal streaks in the field at right

COMMENTS: 1,669,300 Double Eagles were minted at Philadelphia in 1899, and examples are plentiful in grades through MS64.



9191

\$20.00 1899 S (#9036).**MS64 NGC (# 4555169006)**CDN/CPG® VALUE: **\$3,380**ESTIMATE: **\$2,200**MIN. BID W/O BP: **\$1,700**

CONDITION NOTES: Rose gold with olive accents in angled light, sharp strike, very slight marks

COMMENTS: More than 2 million Double Eagles were minted at San Francisco in 1899, and examples are plentiful in grades through MS63, but considerably scarcer in MS64 or higher grades. NGC reports 349 at MS64 and 13 higher (at 65 and 68). PCGS reports 413 MS64 and 20 at 64+ with only 4 higher (65/67 highest).



9192

\$20.00 1900 (#9037).**MS64+ PCGS (# 342688801) CAC**CDN/CPG® VALUE: **\$2,750**ESTIMATE: **\$1,800**MIN. BID W/O BP: **\$1,400**

CONDITION NOTES: Honey and rose gold, sharp strike, a few tiny contact mark in fields but exceptionally choice, which is reflected in the MS64+ grade and CAC verification

COMMENTS: 1,874,460 Double Eagles were minted at Philadelphia in 1900, and examples are plentiful in grades through MS64.



9193

\$20.00 1901 (#9039).**MS65 PCGS (# 9650340)****CDN/CPG® VALUE: \$4,500****ESTIMATE: \$3,000****MIN. BID W/O BP: \$2,400**

CONDITION NOTES: Deep orange-gold with crimson accents in angled light, sharp strike, very faint abrasion traces, tiny spot between stars at 4 o'clock, with Generation 5.0 PCGS green label (graded more than 20 years ago)

COMMENTS: This piece in a 1990s PCGS holder comes from the large group of superb 1901 Double Eagles that reached the market in that decade. It is graded MS65, and although a few hundred exist in this grade, only a handful grade higher.



9194

\$20.00 1903 (#9043).**MS65 NGC (# 1209282024)****CDN/CPG® VALUE: \$3,880****ESTIMATE: \$2,500****MIN. BID W/O BP: \$2,000**

CONDITION NOTES: Brilliant gold with crimson accents in angled light, sharp impression, the only contact mark of note is an arc-shaped scratch buried in Liberty's hair

COMMENTS: A relatively small number of Double Eagles—287,270—was minted at Philadelphia in 1903, but huge quantities were repatriated from Europe, in grades through MS64. It is somewhat scarcer in MS65.



9195

\$20.00 1904 S (#9046).**MS65 PCGS (# 4276679)****CDN/CPG® VALUE: \$3,560****ESTIMATE: \$2,300****MIN. BID W/O BP: \$1,800**

CONDITION NOTES: Deep orange-gold with crimson accents in angled light, moderately soft strike noticeable in "Liberty" and hair, tiny and negligible marks, dark spot in field at left (surface only), with Generation 5.0 PCGS green label (graded more than 20 years ago)

COMMENTS: This piece in a 1990s PCGS holder comes from the large group of superb 1903 Double Eagles that reached the market in that decade. It is graded MS65, and although a few hundred exist in this grade, only a handful grade higher.



9196

\$20.00 1906 S (#9051).**MS64 PCGS (# 36762931)****CDN/CPG® VALUE: \$4,000****ESTIMATE: \$2,600****MIN. BID W/O BP: \$2,000**

CONDITION NOTES: Deep orange-gold with crimson accents in angled light, sharp strike, very faint abrasion traces, tiny dark spot in hair above eye

COMMENTS: The numbers reported for the 1906-S are relatively low compared to other late-issue Liberty Double Eagles: NGC for MS64 is 112 and 6 at 64+ (6 at MS65, none higher); PCGS for MS 64 is 325 and 32 at 64+ (6 higher).



9197

\$20.00 1908 (No Motto) (#9142).**MS67 NGC (# 901331015)****CDN/CPG® VALUE: \$5,380****ESTIMATE: \$3,500****MIN. BID W/O BP: \$2,800**

CONDITION NOTES: Brilliant semi-reflective gold luster with frost and rose accents, sharp strike, a Gem from the Wells Fargo hoard (NGC)

COMMENTS: The 1908 No Motto Saint-Gaudens is readily available in Gem Mint State quality thanks to the extraordinary discovery by Ron Gillio, whose account is published in Q. David Bowers' 2004 A Guide Book of Double Eagle Gold Coins and quoted here: "Of all the different hoards I have bought in Europe, Asia, America, and elsewhere, this group of 1908s is the most interesting and highest quality group I have ever purchased. Here is the basic story, although some details must remain confidential. In the 1990s I bought 19,900 pieces of 1908 No Motto twenties. The coins were stored in one place in bags of 500 coins, each with a seal. The seals on the bags of all 19,900 coins were all dated in the 1960s. When I first met with the owners there were several people involved, and I was on hand with a colleague. They had a special book that in which we had to register before they opened the first bag. The book contained the

seal number and the date of the seal. We had to sign this book for every bag they opened. The person opening the bags was the person who sealed them originally. At first glance I could tell the coins were fantastic and of high quality, as the bags were never tossed around or recounted over the years, in contrast to most bank hoards. I took the coins and put them in rolls of 50 and then put the rolls back in the bags. By the way, the bags were normal canvas bags that had been used to replace the original bags, which had deteriorated, in which they were sealed in 1917. The coins had something to do with an international payment of some kind in the World War I era. Except for the rebagging, the coins had remained unmoved and untouched since 1917! After I bought the coins they were subsequently moved and stored for a time at a Wells Fargo Bank in Nevada, whose name was later attached to the hoard. Most of the coins were graded by PCGS and NGC receiving the highest grades of any hoard of \$20s. Here is an approximate breakdown of the grades: MS-69 (10 coins), MS-68 (200+), MS-67 (1,700+), and MS-66 (6,000+), with the balance being MS-65 and lower. I have never seen a hoard of \$20s of this quality, all one date, before this group or after."

GOLD COMMEMORATIVES



9198 **\$2.50 1915 S (Panama-Pacific) (#7450).**
MS65 NGC (# 1772118001)
 CDN/CPG® VALUE: **\$4,060**
 ESTIMATE: **\$3,500**
 MIN. BID W/O BP: **\$2,800**
 CONDITION NOTES: Deep gold with crimson accents, sharp detail, couple tiny marks in fields
 COMMENTS: Only 6,749 of the 10,000 Panama-Pacific Quarter Eagles minted were distributed. A “classic” gold commemorative coin.



9199 **\$2.50 1926 (American Sesquicentennial) (#7466).**
MS65 NGC (# 4493972029)
 CDN/CPG® VALUE: **\$1,380**
 ESTIMATE: **\$900**
 MIN. BID W/O BP: **\$750**
 CONDITION NOTES: Lovely honey-gold luster with sharp detail and virtually mark-free
 COMMENTS: The 1926 American Sesquicentennial Quarter Eagle was the last of the commemorative gold series.

END OF SALE — THANK YOU



**How will we
spend millions
on coins and
paper money?**

**By paying the
highest prices.**

On the spot.

**We urgently need to buy high-quality coins and paper money
from private collectors and estates.**

**Please call today – 212-753-6421 – to receive
our offer for purchase with immediate payment.**

Large collections also accepted on consignment.

Robert A. Siegel

AUCTION GALLERIES, INC.

siegelauctions.com

6 W. 48th Street, 9th Floor, New York, N.Y. 10036

Phone (212) 753-6421 • Fax (212) 753-6429

Email: stamps@siegelauctions.com

Live Internet Bidding at Siegel Auctions

REGISTERED BIDDERS MAY BID IN THIS SALE USING LIVE INTERNET BIDDING

This step-by-step guide will instruct you how to register, set your browser and use the bidding interface.

Start by following the simple steps to become a registered Live Internet Bidder.

Once you have been approved for bidding, you can listen to the auction and place bids with the click of a mouse.

Registering with STAMP AUCTION NETWORK & SIEGEL AUCTION GALLERIES

Live Internet Bidding is managed by Stamp Auction Network (SAN).

To bid, you must be registered and approved by both SAN and Siegel.

To decide what you need to do, choose the description below that best fits you.



I've already registered with SAN and have been approved by Siegel for internet bidding

I'm a Siegel client, but I'm not registered with SAN

Go to stampauctionnetwork.com/siegel and click on "Register" at the top. Check the box for Robert A. Siegel Auction Galleries (under "R") and submit the form, indicating you are a Siegel client. Once registered at SAN, you're ready for internet bidding.

I've bid through SAN before, but this is the first time I've bid in a Siegel sale

Then you just need to be approved by Siegel. Go to stampauctionnetwork.com/siegel and click on "Update Registration" at the top. Your SAN account information will be sent to us for approval (you might be asked for other trade references). Once approved by Siegel for bidding, you're ready for internet bidding.

I've never bid with Siegel, nor registered with SAN

Go to stampauctionnetwork.com/siegel and click on "Register" at the top. Check the box for Robert A. Siegel Auction Galleries (under "R") and submit the form with your trade references (please, no family members or credit card companies as references). Once registered at SAN and approved by Siegel for bidding, you're ready for internet bidding.

Live Internet Bidding works by allowing registered bidders to observe and place bids.

Live Internet Bidding will work with any browser on both PC and Mac operating systems.

Before bidding by internet for the first time, we recommend finding a sale in progress and listening to the public broadcast or logging in as a registered bidder. This will help you develop a feel for the sale tempo and bidding interface.

Log on to the auction at stampauctionnetwork.com

When you're logged on as a Live Internet Bidder, the bidding interface shows a photo and description of the lot, the current bid (and your bidding status), options for placing competitive bids and buttons with bid increments.

- After you click on a bid amount, the auctioneer is immediately notified of your bid.
- Retracting a bid is usually not acceptable, so please bid carefully.
- If you bid and then decide to stop, the "Pass" button will tell the auctioneer you are no longer bidding.
- You can send messages to the auctioneer (for example, a request for extension).
- You can track prior realizations from the bidding screen.

Robert A. Siegel Auction Galleries, Inc.'s Sale 1185

Closing on June 27, 2018. [Listen to the Auction.](#)
Contact us by Phone at (212) 753-6421, [Contact us Via eMail.](#)

F11 (if using Internet Explorer) toggles full

Lot and Description	Bidding
 United States Inverted Jenny Postage Positions 15 and 6 Lot 91. 24c Carmine Rose & Blue, Center Inverted (C3a). Position 15, the fifth stamp from the left in the second row of the sheet, original gum, deep rich colors, tiny thin spot just below the plane, faint traces of purple ink above the bottom left "2" (image)	<div>Bid 280000</div> <div>Bid 290000</div> <div>Bid 300000</div> <div>Bid 310000</div> <div>Bid 320000</div> <div>Bid 330000</div> <div>Send a Message to the Auctioneer</div>
\$ 450,000.00 Sold for \$ 270,000.00 Your Bid \$ 0.00	

"System Down" or "Lost Connection" events do occasionally happen.

If you have any problems with Live Internet Bidding please call 212-753-6421 for immediate assistance.

BIDS

Use this form to submit absentee bids
or to confirm telephone bids

Sale 1223

June 4-5, 2020

PADDLE #

1

Please provide the following information:

NAME

ADDRESS

CITY/STATE/ZIP

PHONE MOBILE

EMAIL

2

Have you purchased from us in the past 5 years? ☐ Yes (please go to Section 3)
☐ No (references required below)

STAMP/COIN FIRM..... PHONE

STAMP/COIN FIRM..... PHONE

Please submit references at least **2 business days** before the sale. Bids from new clients will not be executed if satisfactory references are not received in time to be contacted.

3

- Enter the lot number and your corresponding maximum bid in the space below
- Use whole dollar amounts and bid according to the increments (see back of form)
- Bids do not include the **18% Buyer's Premium**, taxes, duty or shipping charges
- Absentee bids will advance at one increment over the next highest competing bid
- "Plus", "Break Tie" or "Buy" bids will not be executed
- Indicate any "Or" bids between lot number/bid entries and bracket your choices
- If you wish to limit the total amount of your bids, follow the instructions below

Lot #	Bid \$	Lot #	Bid \$	Lot #	Bid \$

☐ **Limit Bids:** Check this box if you wish to limit the total hammer price of your bids (excluding 18% Buyer's Premium, taxes, duty and shipping costs). Your bids will be executed until your bidding limit has been reached. The total amount you wish to bid is \$

4

By signing this form, you agree to all of the Conditions of Sale printed in the sale catalogue (printed and digital), including but not limited to a) payment in the manner demanded by the Siegel firm, and b) payment of the 18% Buyer's Premium, any sales tax or customs duty, shipping costs, late charges and

other prescribed charges. You agree that your bids will be executed as a courtesy by Siegel, but you waive the right to make any claim against Siegel or its employees arising from these bids or your participation in the sale. You agree to honor all bids as submitted, regardless of any errors or omissions.

SIGNED DATE

Mail the signed form to Siegel Bid Department, 2651 N. Harwood St., Suite 255, Dallas, TX 75201
or email to stamps@siegelauctions.com
or fax to 212-753-6429

Additional Bids

Sale 1223

June 4-5, 2020

PADDLE #

Lot #	Bid \$	Lot #	Bid \$	Lot #	Bid \$

Shipping & Insurance

We will be pleased to arrange for shipping and transit insurance for purchases in this sale, except for lots marked or announced as "floor sale only." To expedite billing and delivery to hundreds of buyers in each sale, we use standard charges for postage and insurance under our policy. These charges are based on the package weight and mailing requirements, according to the schedule shown here. Our standard charges do not include a fee for our services, and they may be slightly more or less than the actual postage or Fedex fee. We ask all buyers to remit the invoiced amount for shipping and insurance.

Transit insurance is provided in all cases, except when the buyer has furnished us with documentation that insurance is effective under the buyer's own policy.

There will be no added insurance charge for shipments of less than \$75,000 value. Shipments valued in excess of \$75,000 may require supplemental insurance and/or special courier service, the estimated cost of which will be furnished to the buyer prior to shipment. If the buyer refuses to pay the estimated charges or furnish proof of self-insured coverage, the buyer will be responsible for picking up the lots at our office and any resulting sales tax.

Bidding Increments

The auctioneer may regulate the bidding at his discretion. However, to assist absentee bidders in establishing their maximum bids, the increments shown here will be used in most cases. We recommend that written bids conform to these increments—bids that do not will be reduced accordingly.

Standard Shipping Charges

Weight Class	Shipping Method	Charge
Up to 2 lbs.	Fedex Envelope	\$20
Over 2 lbs.	Fedex Box	\$35 - \$50*
Outside US	Fedex	\$50 - \$100**
Bulky Lots	Fedex Ground or Express	By weight

* Up to \$75,000 value and up to 5 lbs; additional charge may apply to packages exceeding limits

** Buyers outside United States are liable for any applicable customs duty and clearance charges. An accurate declaration of contents and value will be made on all packages and import/export documents. **Siegel may refuse to ship lots to certain countries with a high risk factor.**

2/2015

Bid	Increment	Bid	Increment
Up to \$200	\$10	\$7,000-20,000	\$500
\$200-500	\$25	\$20,000-30,000	\$1,000
\$500-1,000	\$50	\$30,000-70,000	\$2,500
\$1,000-3,000	\$100	\$70,000-140,000	\$5,000
\$3,000-7,000	\$250	\$140,000-300,000	\$10,000

ROBERT A. SIEGEL AUCTION GALLERIES, INC.

6 WEST 48th STREET, 9th FLOOR, NEW YORK, NEW YORK 10036

Phone (212) 753-6421 Email: stamps@siegelauctions.com

siegelauctions.com