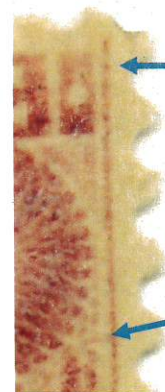


There were five major changes in stamp design involving the outer and inner frame lines over the life of the issue. July 1, 1851 the first stamps were introduced in the orange brown shade and is referred to as No. 10 and 10A. No. 10 (Type I) has no inner frame lines. No. 10A (Type II) has inner frame lines. In both, all outer lines meet at all four corners of the stamp. During October through December, the design did not change but orange brown ink was dropped and not used again except in very rare instances. These stamps are referred to as No. 11. Other than shade changes No. 11 had the same outer and inner line variations as the No. 10.

In February of 1857, perforated stamps were introduced in several shades, but no orange brown shade. These are referred to as No. 25 (Type I no inner frame lines) and 25A (Type II has inner frame lines). No. 25 was replaced starting in July of 1857 with No. 26a (Type IV). It has no top or bottom frame lines and no inner frame lines. The outside frame lines end at the top of the design. 26a was replaced by No. 26 in December of 1858. No. 26 had the same design as 26a except the side lines were continuous from top to bottom of the plate. Examples are shown below.



No Top Line.
Side Line
Ends at Top.

No Inner
Frame Line

Type IV



No. 26A, Type IV OG, VLH. Several shades, no orange brown shade. Issued July 11, 1857. Replaced by No. 26 in December 1858. \$6.00



Type I.



Both Top and Outer
Frame Lines End at
Corners

Inner Frame Line

Type II



No. 11, Type II, OG, LH. Many shades, no orange Brown shade. Replaced No 10A in October through December of 1851. Type I has no inner frame lines.



NEW ORLEANS, JACKSON
& GREAT NORTHERN on
No. 26a. The GN gave access to
Chicago. Remele N9-C, Simpson
p. 178, 2others known.

E. Windsor Hill, CT. OB



Number 5 in circle
Not listed in 3 source
books. very scarce.



Sheet margin and center
line pair with Vicksburg,
Miss. CDS with small "iss"
Brownish Carmine shade
Position 79-80L5 late.
See *Phillips* Vol. 1, p199.



Strip of three Positions 41-43R6,
with 42R6 the 'gash on shoulder'
variant. *center stamp*



Strip of seven Positions 4-10R2 Late, Posit



Marysville, CA
'tire track'
pair obliterator
in blue. Simpson
page 128/9,



"5" overweight rate
carved cork hand stamp of
Bordentown, NJ (Cover
confirms - F. Mandell)



Rectangular
blue grid
Wilmot Flat
N.H.



Minnesota
Territory



Nebraska Territory



Worcester, MA segmented
circle, Simpson, p. 139.

Steamboat marking
"STMB." not listed



"STEAM/BOAT"
Albany, NY
Pos. 84L0 CB
97 PFC

Fairhaven, VT
Ultramarine
Circle of Squares



Target
Jersey Shore, PA

"WAY" strike
Nantucket, MA



one day
after U.S.
Congress
made this
stamp
invalid due
to civil war



Three loop spiral
West Bethel, Maine



8312L
Big DL

Chicopee, Mass.



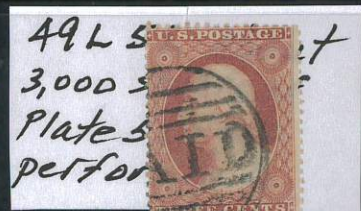
Baton; not found,
beautiful 1857
claret



Circle of Bars
South China
Maine



Double cog, small
inside, large outside
Norwich, CT



49L 5
3,000 s
Plate 5
perform

92L2L
Tripple
Xfer



Brownish Carmine
For comparison



91R7

91R7

Bright Dull Red
16R3 Double Xfer



92R24
T X-fer
3 Examples



T X F

91R76



9R7

Cash on Shoulder
Huge Double X-fer



47 R7 Plate
Crack Late
State U.S. Rep.
the



Position 97R6 bruise on



1200

1856
Brownish Carmine
27, 28 L4



Brownish Claret shade
Sheet margin and
center line. Position
40L7



Type II's



12L10L 98R11L
Doub Xfer trip. Xfer

Orange Brown
~~Plate TT~~
Medium EX WH



26a's
G. Granzow



Double
Transfer
#11 Type I
16R3



Double
Transfer
12L10
#26a



Double
Transfer
Gash on
Shoulder
Deep O.B.
100R11

52L2L Double X-fer
About 4,000 sheets
of Plate 2L were
perforated.



59R3 About
5,000 sheets of
Plate 3 were perforated



Triple
Transfer
92R2L



Triple
Transfer
98R11L



Triple
Transfer
Gash On
Shoulder



Re-entered
twice



Cracked
Plate
Late Stage
448R7L

High-res scans
with "section"
enlargements-
perhaps more
than one for
each stamp-show
the errors in
detail.

3 CENT STAMP 1851 PLATE #3 LEFT PANE

THE FAMOUS 3 ROWS DESCRIBED
BY DR. CARROLL CHASE IN HIS
FIRST PAPER PUBLISHED IN
1909 BY THE AMERICAN PHILATELIC
SOCIETY AS NUMBER ONE
OF THEIR HAND BOOK SERIES

The spectacular recutting of
the stamps in the last three rows
of the left pane of
plate 3 makes the plating of
these positions relatively
simple, but is most rewarding
and instructive to the new
student of plating.

Each stamp in this plating
clearly shows the necessary
characteristics of its
position in the plate.

Several stamps show wide
sheet margins and two show
a complete center guide line
6 mm. from the stamp.

Over the life of plate 3 a
number of shade varieties
are known, several of which
can be noted here.

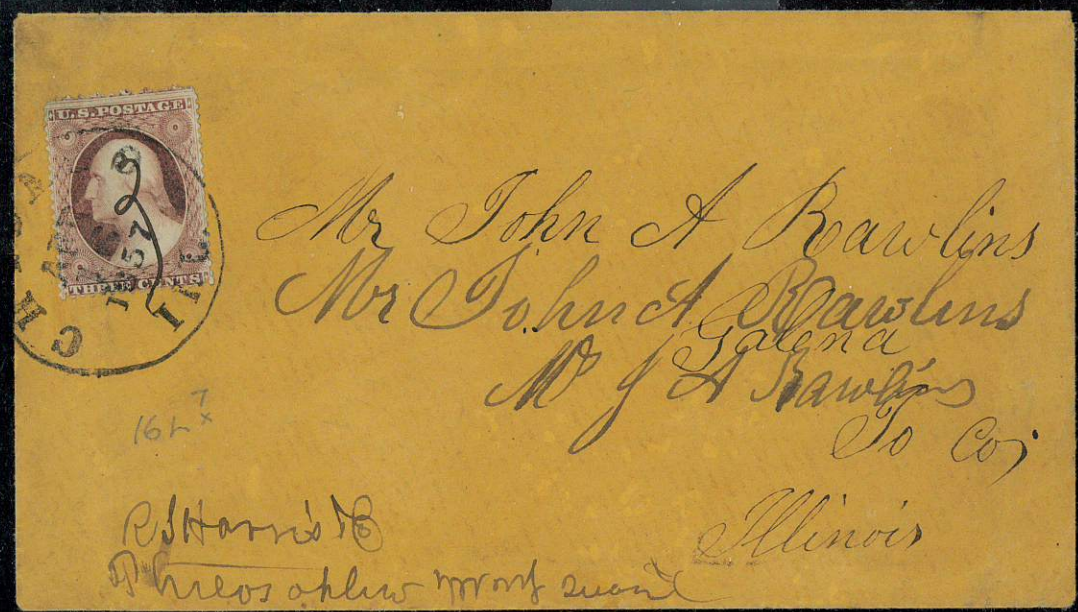
Included here are some stamps
originally plated by Dr. Chase
and are from his collection.

THREE ROWS

			8-9-10 L3
			18-19-20 L3
			28-29-30 L3
			38-39-40 L3
			48-49-50 L3
			58-59-60 L3
			68-69-70 L3
			78-79-80 L3
			88-89-90 L3
			98-99-100 L3

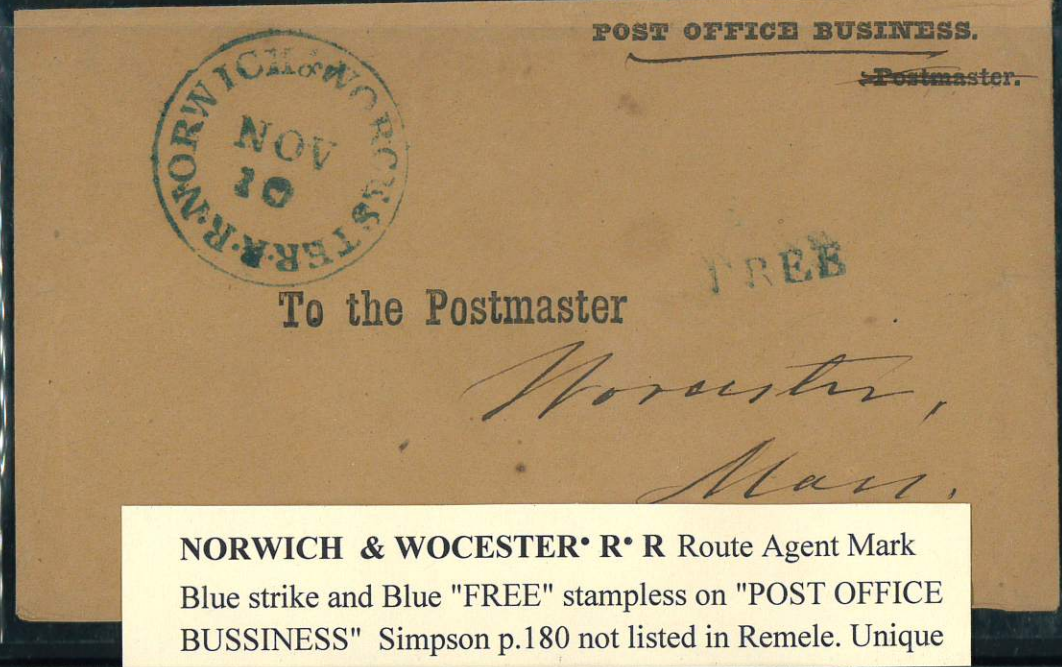
Recut Bust,
Pos. 47R6

Clarets

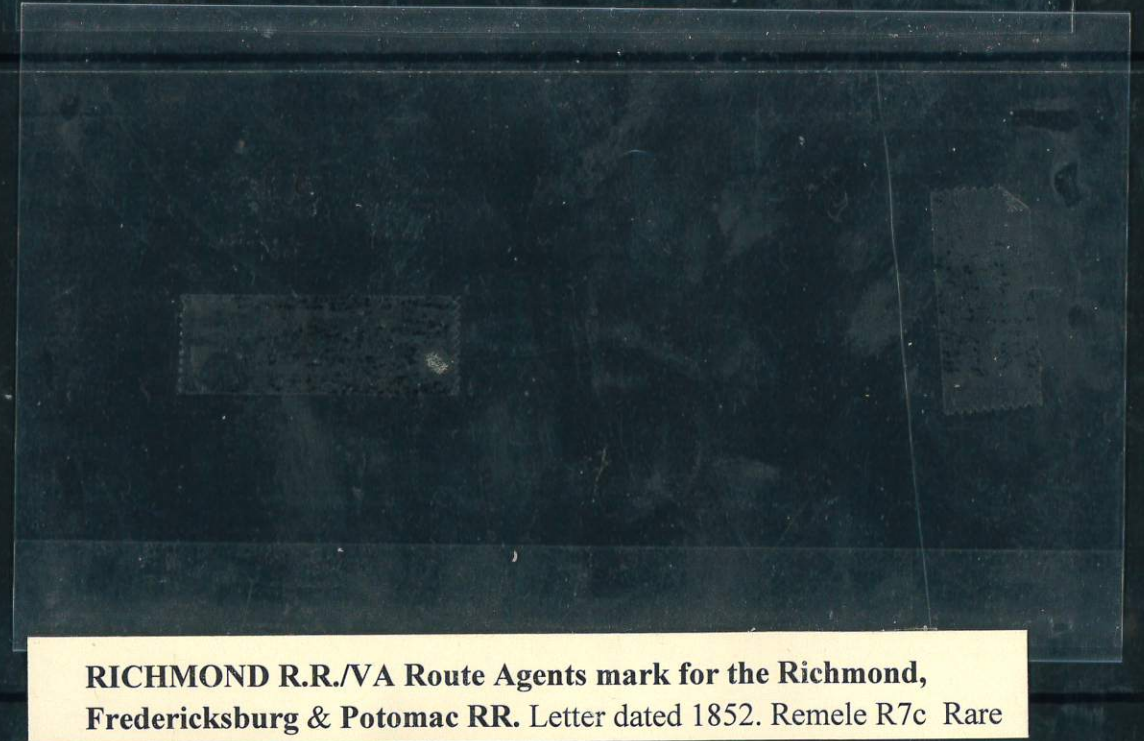


An experimental use of the first perforated stamps started in February, 1857 and ended in June of 1857. This is based on shipment data. Only twelve cities were involved in the test period. The cover above dated 4/15/57 is one of few posted in Chicago during the test period.

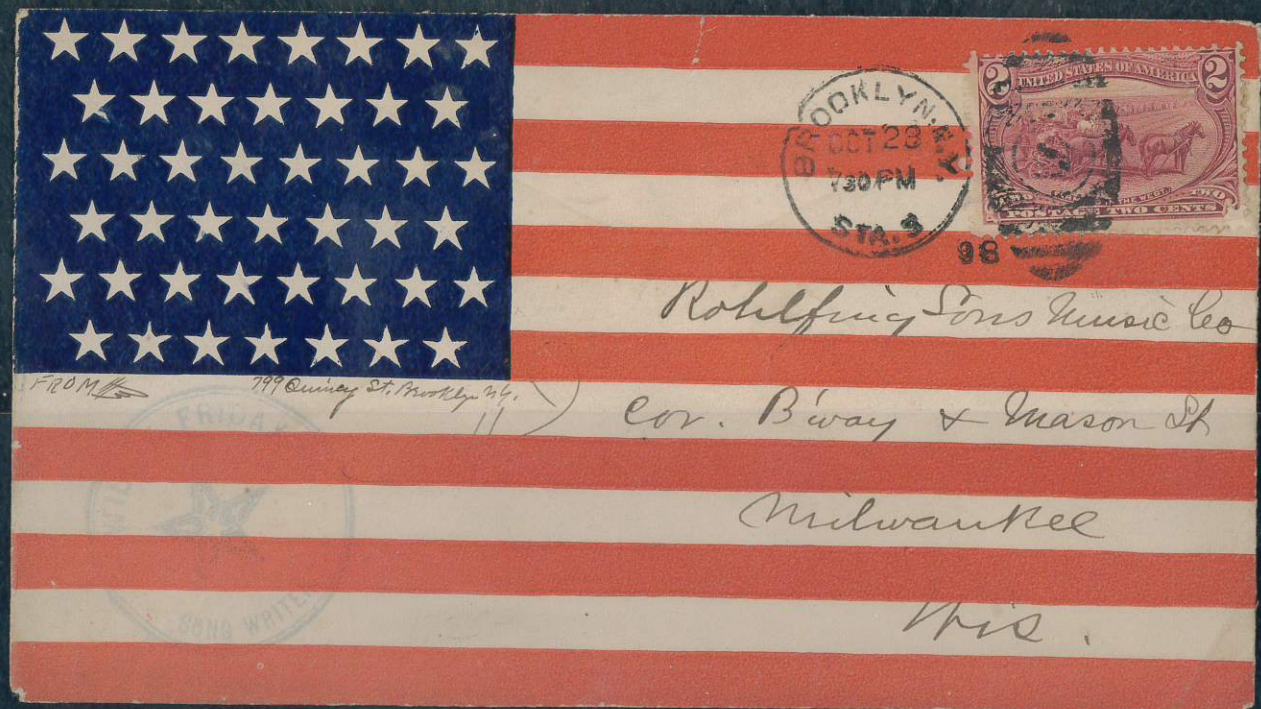




NORWICH & WOCESTER R R Route Agent Mark
Blue strike and Blue "FREE" stampless on "POST OFFICE
BUSSINESS" Simpson p.180 not listed in Remele. Unique



RICHMOND R.R./VA Route Agents mark for the Richmond,
Fredericksburg & Potomac RR. Letter dated 1852. Remele R7c Rare

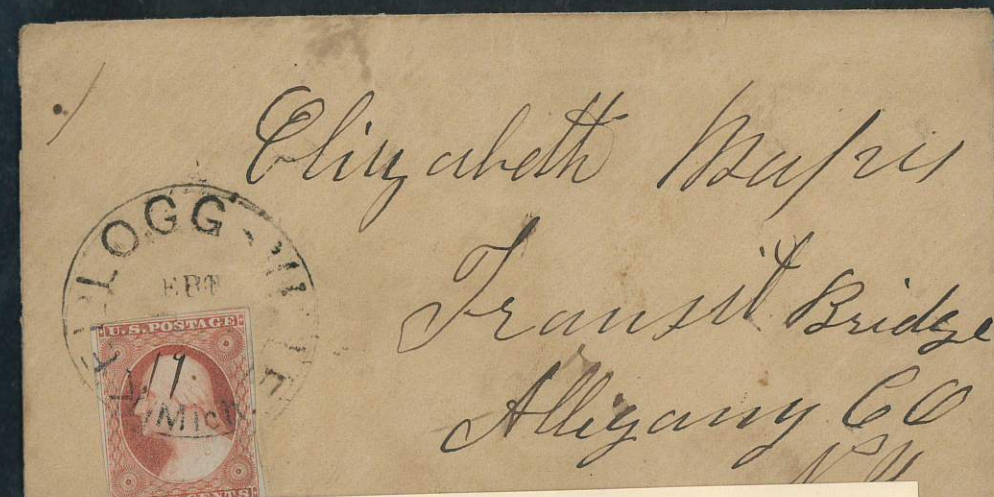


INDUSTRY MARKS

Some factories were large enough to have their own post offices.



Paper Mill Village • N • H • Simpson 7 known



Keloggsville, Michigan, this mark is not listed in Simpson and maybe unique.