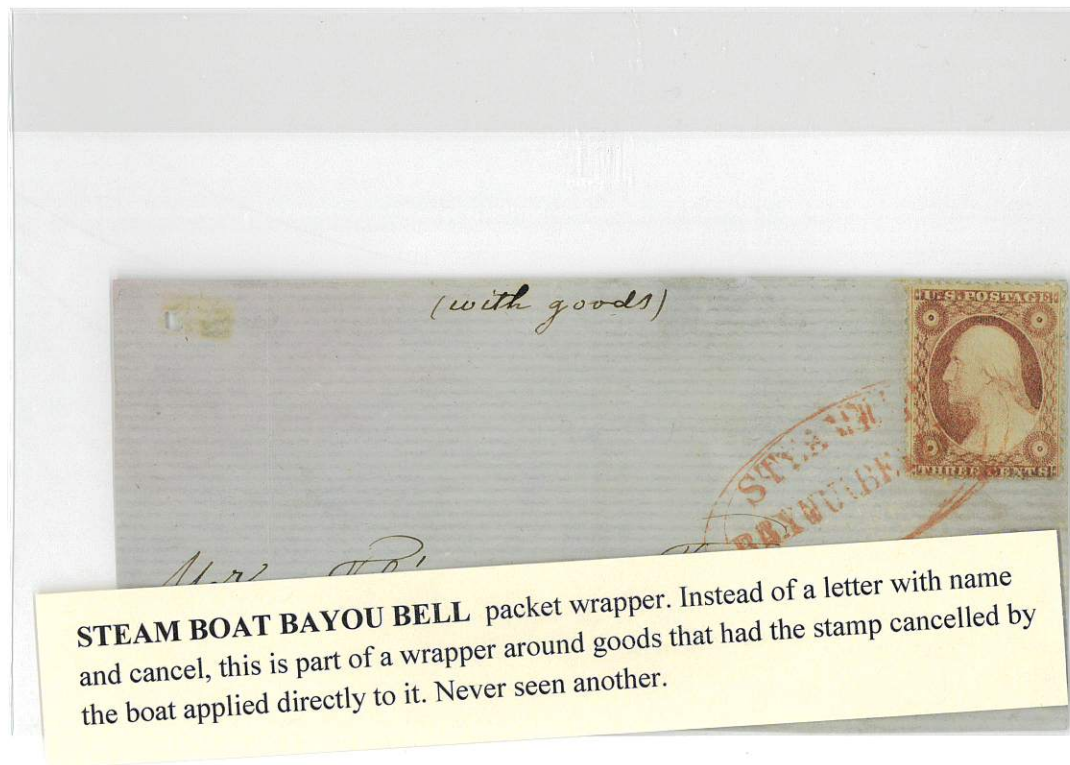
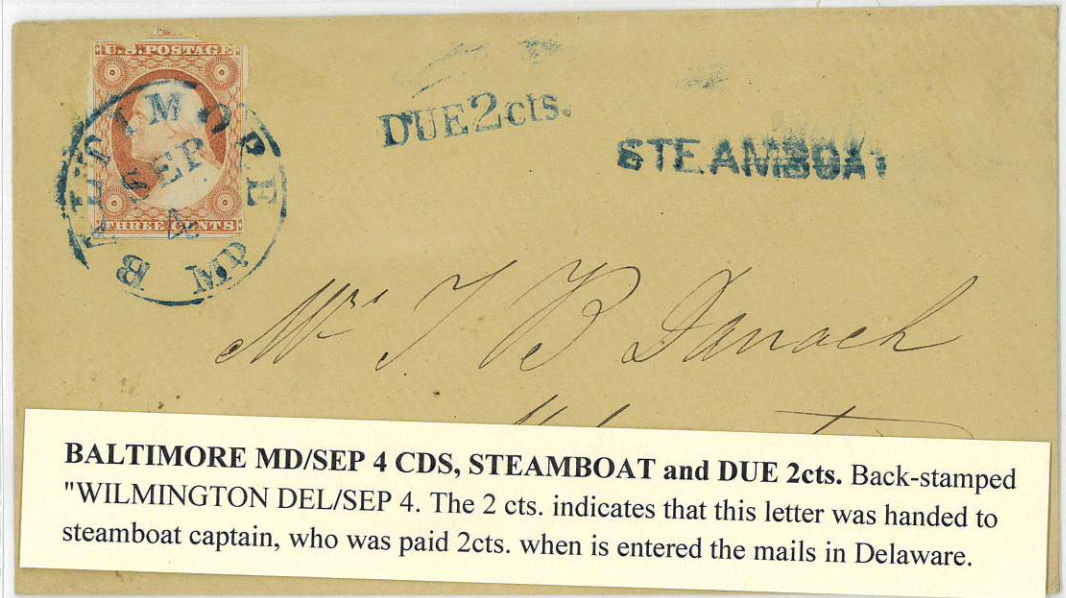


Drop letters were left at a PO to be picked up and paid for by the addressee, never entering the mails. As indicated in the letter, this was picked up by a steamboat on the Mississippi River and left at the New Orleans PO. The 3¢. Stamp paid the 1¢ drop fee and 2¢ fee to the steamboat captain. The normal "drop" mark contains a "1" This mark without a number is very rare.



1852



Rob. A. Barnes Esq.

Folding letter sheet requesting "Steamboat St. Louis". Hand stamped "STEAM" on arrival in St. Louis to be picked up by addressee. One cent charged to the addressee for the ship captain and two cents for steamboat fee.



STEAM

*L. L. Harris Esq
Springfield
Mass*

2 *paid*



*Mr E. L. Anderson
Bedford. Pa.*

GREAT LAKES

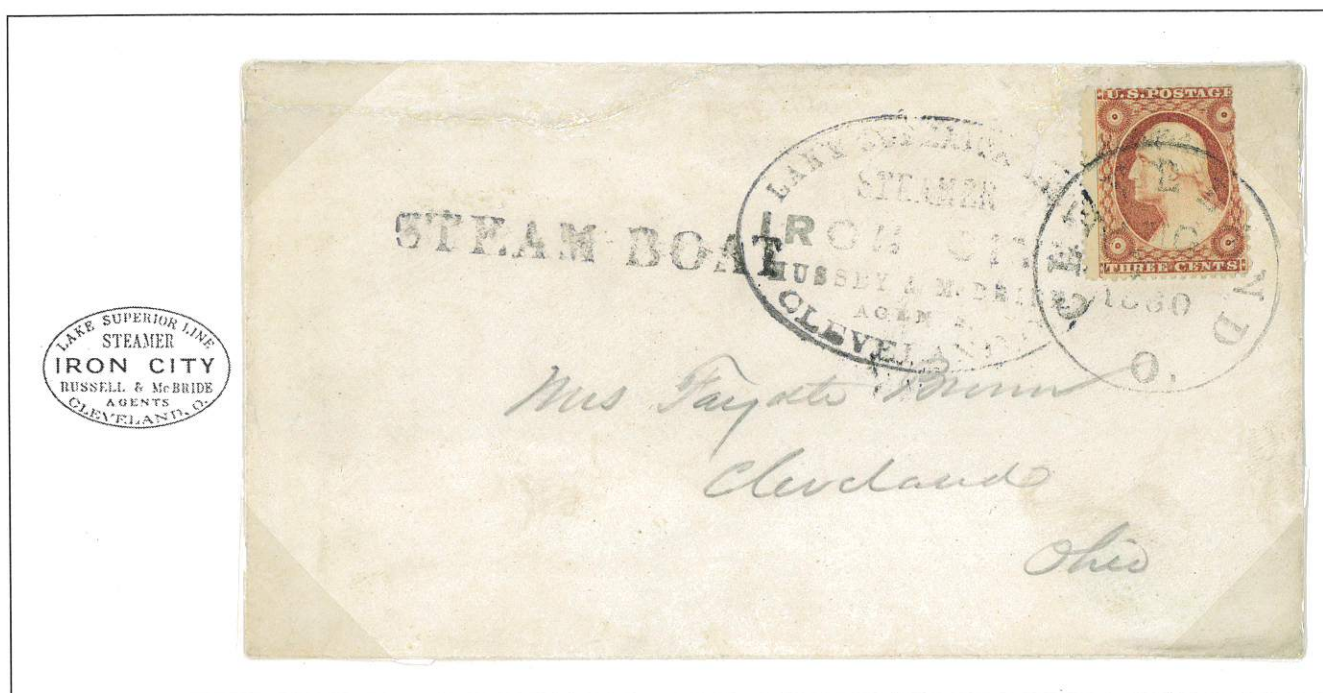
Lake Superior
Lake Huron
North Channel
St. Clair River
Lake Erie

Purser's Marking

Route: Lake Superior → North Channel → Lake Huron → St. Clair River → Lake Erie → Cleveland, OH

Entered
Mails: Cleveland, OH

Purser's
Marking: LAKE SUPERIOR LINE STEAMER IRON CITY



The Steamer Iron City marking is a purser marking applied aboard the steamboat to letters picked up for delivery to the post office or letters which originated on board.