

United States Mails of the Period 1847-1869

Unusual Cancellations

Postal Markings

July 1, 1847 saw the appearance of the first issue of United States Government postage stamps. Official instructions from the Post Office Department in Washington advised that, to prevent reuse of stamps, postmasters were to obliterate them with pen and ink. Many complied; still others resorted to the use of a handstamp obliterator as being more efficient and more effective. Over the next few decades, some of the more artistic postmasters and clerks relieved the tedium of the simple "cork" cancel with a variety of creative designs. These are the "fancy cancels" beloved by the collector.



ex Emerson

Sheet margin 5c 1847

Handstamped Poughkeepsie cds; the stamp cancelled by pen and ink.

Postal Markings



"Due 1"
Provisional Postage Due
Detroit, used for 7 days only.



"Return to Writer"



Slug in place of date.
Circulars
Nashville, Tenn.



"Circulars"



"Short Paid"



"Cancelled"



"Church."
Quite possibly an accounting marking of the Diamond Chemical Works
denoting the discount on a church order for "17 packs blue."

Simple Designs

Grids of Dots, Dashes, or Diamonds

Off-cover stamps cancelled by "simple designs" can rarely be allocated to a specific city.



Tiny Red Dots



*Dashes, Circular
Pie-shaped*



*Large Diamonds
Red*



*Oblong of Dashes
Blue*



*Small Diamonds
Circular Frame*



*Oval of Dashes
≈ 'S-E' SD-G 23, p.24*



*Short Dashes
Blue, Circular Frame
≈ 'S-E' SD-G 23, p.26*

Simple Designs

Grids of Diamonds, Unframed



Large Red Diamonds



Tiny Blue Diamonds



*Large Black Diamonds
New York*



*Large Black Diamonds
Warehouse Point, Connecticut
A 'drop-letter', therefore no cds.*

Simple Designs

Grids of Bars, Framed



7-Bar Grid in a Circular Frame – 'S-E' SD-G 71, p.27
The first "standard" canceller, furnished by the Department to principal offices.
5c 1847 used with a Boston Semi-Official Carrier



Standard, Blue
'S-E' SD-G 71, p.27



12 Bars
≈ 'S-E' SD-G 69, p. 27



'Jail Bars', Green
Columbus, Ohio
'S-E' SD-G 102, p.29



Standard, Red
Wheeling, Va.
'S-E' SD-G 72, p.27

The Wheeling postmaster used the standard grid, not as a canceller, but as a control mark on the first shipment of 1847 issue stamps received. He struck the grid in red 25 times on the sheet, on the center of each block of four, before selling stamps to the public. When used, the stamps were cancelled by the same grid, but in blue. No more than 400 10c 1847s received this control mark.

Simple Designs

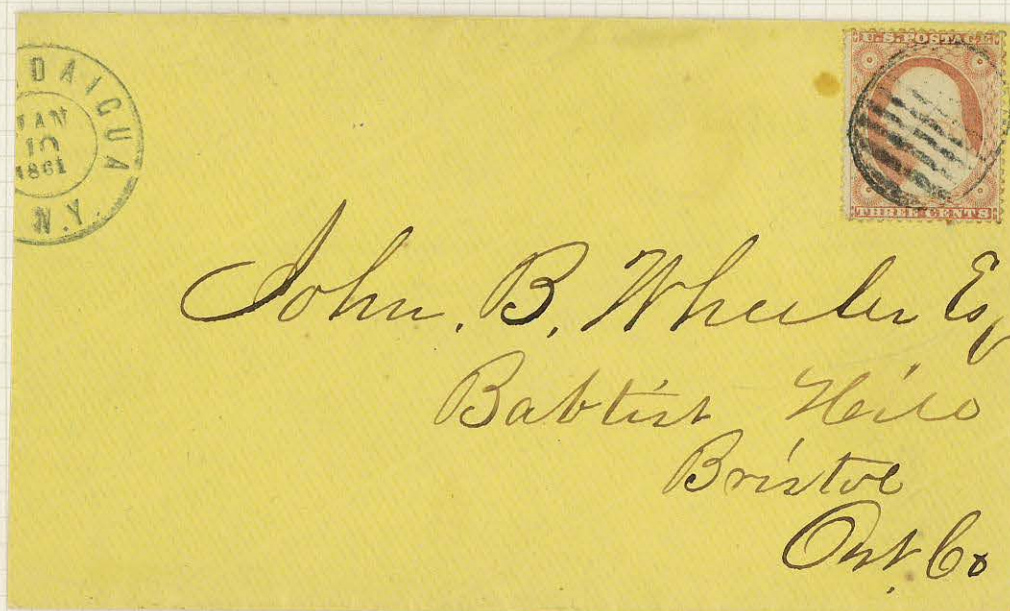
Grids of Bars, Framed



4 Bars, Circular, Blue



6 Bars, Oval, Bluish



*10 Bars, Large Oval
Canandaigua, N.Y.*

Simple Designs

Compound Circular Grids

A few Postmasters used grids in which the bars crossed. Some are simple grids struck twice; others are clearly a single impression of a complex design.



*Worn Impression
'S-E' SD-G 73, p.28*



*West Gloucester, Mass.
'S-E' SD-G 76, p.28*



*Cambridge, Mass
'S-E' SD-G 74, p.28*



*Pottsville, Pa., Blue
Not in 'S-E'*

Simple Designs

Grids of Bars, Unframed



5 Bars, Blue
≈ 'S-E' SD-G 49, p.50



13 Bars, Square
New York
'S-E' SD-G 93, p. 29



Complex, Red
Putnam, Conn
'S-E' SD-G 11, p. 24



Long Oval, Green
Not in 'S-E'

Pink
64



Split Bars, Brown
Woonsocket, Conn
'S-E' SD-G 33, p. 25



7-Bar Oval
≈ 'S-E' SD-G 31, p.25

Simple Designs

Carets



≈ 'S-E' SD-C 16, p. 32



Not in 'S-E'



Private die playing card
revenue (A. Dougherty)
used for postage. ex Joyce
≈ 'S-E' SD-C 6, p. 32



≈ 'S-E' SD-C 16, p. 32

Simple Designs

Spirals



Baltimore, Md.
'S-E' SD-S 1, p. 33

Simple Designs

Targets

The majority of target cancels are "stock" designs and, off-cover, can be sorted only by type.



'S-E' SD-T 8, p. 34



'S-E' SD-T 23, p. 35



'S-E' SD-T 25, p. 35



'S-E' SD-T 20, p. 35



'S-E' SD-T 18, p. 35



Not in 'S-E'



≈ 'S-E' SD-T 7, p. 34
(struck twice)



'S-E' SD-T 20, p. 35

Geometrics

Circular



Stillwater, Minn.
'S-E' GE-C 4, p. 39



Leominster, Mass.
'S-E' GE-C 7, p. 39



Galena, Illinois
'S-E' GE-C 20, p. 40



Schuylersville, N.Y.
'S-E' GE-C 5, p. 39

Geometrics

Circular



≈ 'S-E' GE-C 21, p. 40



Haverstraw, N.Y.
'S-E' GE-C 35, p. 41



'S-E' GE-C 40, p. 41



Boston, Mass
'S-E' GE-C 42, p. 42



≈ 'S-E' GE-C 34, p. 41



≈ 'S-E' GE-C 36, p. 41



≈ 'S-E' GE-C 35, p. 41



Calais, Maine
'S-E' GE-C 56, p. 42



Boston, Mass.
'S-E' GE-C 79, p. 44



New York, N.Y.
'S-E' GE-C 117, p. 46



≈ 'S-E' GE-C 150, p. 48



Fort Plain, N.Y.
'S-E' GE-C 182, p. 50

Geometrics

Polygons



Lockport, Ill.
'S-E' GE-D 9, p.52



Diamonds
Orford, N.H.
≈ 'S-E' GE-D 13, p.52



'S-E' GE-D 3, p.52

Heptagons

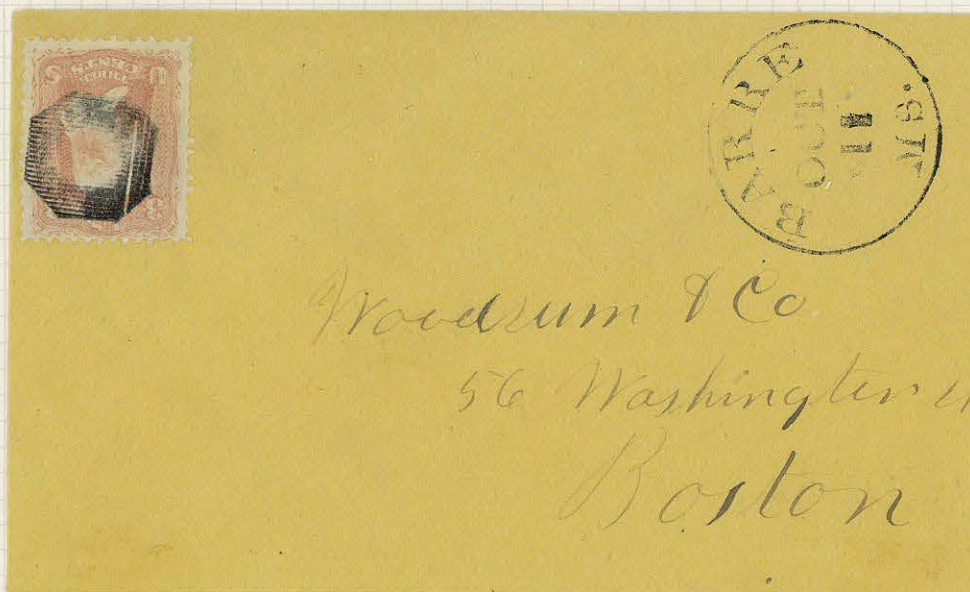


New York, N.Y.
'S-E' GE-H 8, p.53



≈ 'S-E' GE-H 4, p.53

Octagon



Barre, Mass.
'S-E' GE-H 5, p.53

Geometrics

Polygons

Triangles



Triangle, N.Y.
'S-E' GE-T 2 p.56



New York, N.Y. (Foreign Mail)
'S-E' GE-T 23, p.57

Squares and Rectangles



Not in S-E



Bristol, Pa.
'S-E' GE-S 28, p.55



Not in S-E

Geometrics

Pinwheels and Cogwheels



New Bedford, Mass.
'S-E' GE-P 27, p.60



Wellsburg, W. Va.
'S-E' GE-P 55, p.60



Cambridgeport, Mass.
'S-E' GE-P 33, p.60



Tuscaloosa, Ala.
≈ 'S-E' GE-P 44, p.61



Green



Pinwheels not in S-E



Blue

Geometrics

Pinwheels and Cogwheels

En

Louisville, Ky.
Not in S-E



Canastota, N.Y.
≈ 'S-E' GE-P 11, p.59

Geometrics

Pinwheels and Cogwheels



Leominster, Mass.
'S-E' GE-P 63, p.62



Cambridgeport, Mass.
Not in S-E

Geometrics

Radial



Not in S-E



New York, N.Y.
'S-E' GE-R 38, p.66



Not in S-E



Stroudsburg, Pa.
'S-E' GE-R 23, p.65



Ripon, Wis.
'S-E' GE-R 5, p.64



Green
'S-E' GE-R 14, p.64



Montpelier, Vt.
'S-E' GE-R 31, p.65
(worn)



Not in S-E

Geometrics

Elaborate



'S-E' GE-E 6, p.68
Early Strike



Marysville, Cal.
'S-E' GE-E 3, p.60



Petersburgh, Va.
'S-E' GE-E 17, p.69



Mount Pleasant, Pa.
'S-E' GE-E 26, p.69



'S-E' GE-E 79, p.72



Brattleboro, Vt.
'S-E' GE-E 74, p.72



≈ "S-E" GE-E 85, p.73



'S-E' GE-E 85, p. 73



New York, N.Y.
'S-E' GE-E 88, p. 73



Kingston, N.Y.
'S-E' GE-E 91, p.74



Not in S-E



Mittineague, Mass
Pentagon and Triangles
'S-E' SI-E 20, p.98



Not in S-E



≈ 'S-E' GE-E 89, p.74



Virginia City
Nevada Territory
Not in S-E



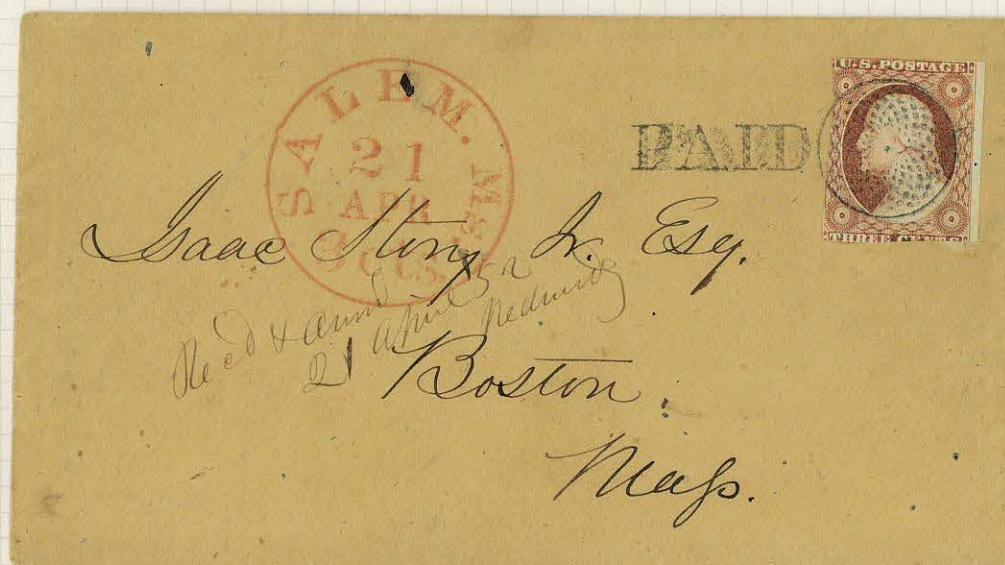
Not in S-E

Geometrics

Elaborate



Johnson, Vt.
≈ 'S-E' GE-E 6, p.68



Salem, Mass.
'S-E' GE-E 25, p.69

Geometrics

Crosses and Cross-Roads



W. Granville Corners, N.Y.
'S-E' CR-C 21, p.78



'S-E' CR-C 13, p.78



Not in S-E



Guilford, Conn.
'S-E' CR-C 18, p.78



Greencastle, Pa
'S-E' CR-C 9, p.77



Springfield, Mass.
'S-E' CR-M 17, p.82



'S-E' CR-X 17, p.84



'S-E' CR-X 18, p.84
smaller



Worcester, Mass.
'S-E' ST-S 2, p. 85

2

One red, one black
≈ 'S-E' ST-S 9, p. 86



Not in 'S-E'
≈ ST-S 6, p. 85



Not in 'S-E'
≈ ST-S 18, p. 86



Old Point Comfort, Va.
'S-E' ST-S 17, p. 86



Town Unknown
'S-E' ST-S 22, p. 86



North Easton, N.Y.
≈ 'S-E' ST-S 13, p. 86 but smaller circle

The William H. Gross Collection

OFFERED BY CHARLES F. SHREVE AND TRACY L. CAREY
IN ASSOCIATION WITH
ROBERT A. SIEGEL AUCTION GALLERIES, INC.

ENV
BOX
ALB



Yellow and orange inks may darken if left inside this protective sleeve. We recommend removing item for long-term storage.

Robert A. Siegel Auction Galleries Inc., 6 West 48th Street, 9th Floor, New York New York 10036
Phone (212) 753-6421 Email: stamps@siegelauctions.com Website: siegelauctions.com

Outlined Stars

Stars with Dots or Circles at Center



Bondville, Vt.
'S-E' ST-O 16, p.87



Not in 'S-E'
≈ 'S-E' ST-) 40, p.89, but in circle



Not in 'S-E'
≈ 'S-E' ST-D 18, smaller



Chelsea, Mass.
'S-E' ST-D 18, p.91



Not in 'S-E'
≈ 'S-E' ST-D 18, smaller



Danvers Center, Mass.
'S-E' ST-D 11a, p.90



Not in 'S-E'
≈ 'S-E' ST-D 29, p.91
bolder, red



Not in 'S-E'
≈ 'S-E' ST-D 23, p.91
much smaller



Windsor, N.Y.
'S-E' ST-D 45, p. 91



Downieville, Cal.
'S-E' ST-D 44, p. 92



Not in 'S-E'
≈ 'S-E' ST-Sh 7



Garrettsville, Ohio
Not in 'S-E'; ≈ 'S-E' ST-Sh 3, much smaller
Addressed to Johnson's Island, a Union Prison Camp near Sandusky

Elaborate Stars

Stars within Stars



Glendale, Mass.
'S-E' ST-E 25a, p.99



Glendale, Mass.
'S-E' ST-E 25, p.99



Not in 'S-E'
Remarkable Combination of Outlined Star and Target



Hartford, Conn.
'S-E' ST-E 3, p.97



Port Lavaca, Tex.
Not in 'S-E', ≈ ST-St 17, p.95



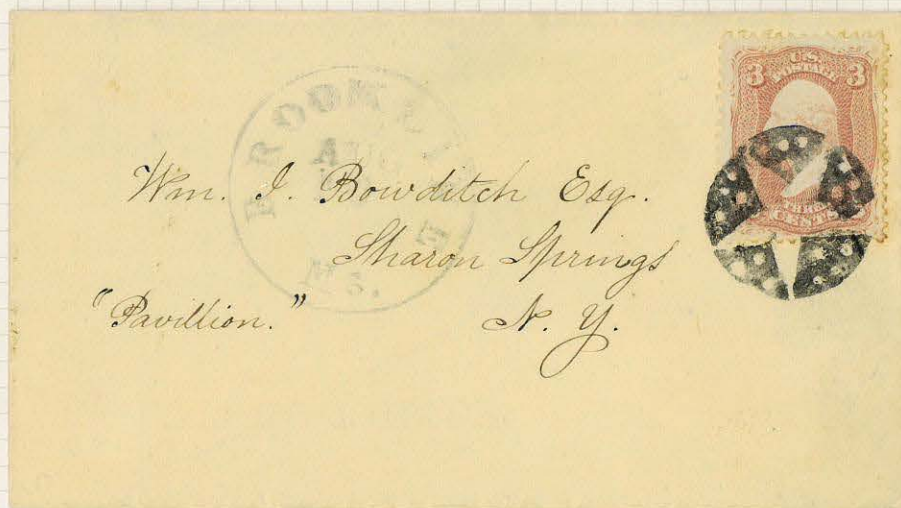
Putnam, Conn.
S-E' ST-E 29, p.99

Elaborate Stars



ex Eno

Barre, Mass.
'S-E' ST-E 2, p.97
Addressed to Nevada Territory



Brookline, Mass.
'S-E' ST-E 43, p.100

Stars in Combination with Letters or Numerals



Mittineague, Mass.
'S-E' ST-C 15, p. 102



Bonds Village, Mass.
'S-E' ST-C 18, P. 102
red



Hatfield, Mass.
'S-E' ST-C 5, p. 101
34th Massachusetts Volunteers



Bonds Village, Mass.
'S-E' ST-C 18, P. 102
black



Westhampton, Mass.
'S-E' ST-C 14, p. 102

From the 'Judd' correspondence. Judd was the Postmaster who carved this canceller.

1300 '06



Miss Hattie A. Gould
Springfield

244

Mass

S-7

Stars with Six Points



*Worcester, Mass.
'S-E' ST-6P 38, p. 106*



*New York, N.Y.
'S-E' ST-6P 45, p. 106*



*Town Unknown
'S-E' ST-6P 29, P. 105*



*Not in 'S-E'
≈ 'S-E' ST-6P 3, p. 104*



*South Yarmouth, Mass.
'S-E' ST-6P 19, p. 105*



*Town Unknown
'S-E' ST-6P 8, P. 104*



*New Haven, Conn.
'S-E' ST-6P 14, p. 104*

Stars with Seven or Eight Points



Redfield, Maine
'S-E' ST-7P 5, p. 108



Morrisville, Vt.
Not in 'S-E'

Pictorials

Figures and Heads



Woman in Profile
Corry, Pa.
'S-E' PH-F 4, p.109

SW

Man in Profile
White House Station, N.J.
'S-E' PH-F 37, p.112



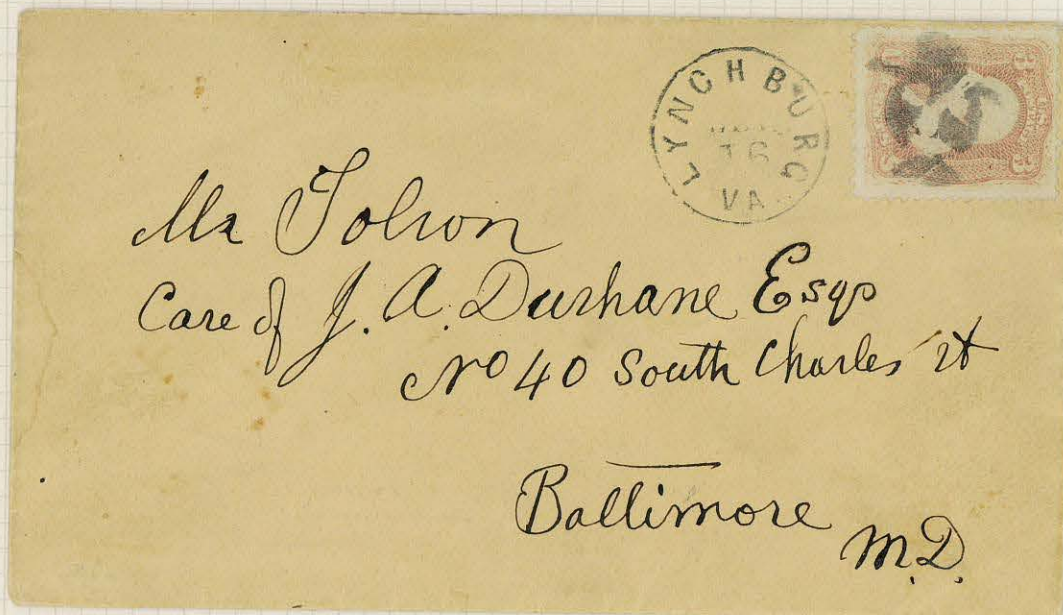
Man with a Crooked Nose
Not in S-E



Man in a Derby
≈ 'S-E' PH-F 16, p.110
reversed



Man in a Derby
Columbus, Ga.
'S-E' PH-F 25, p.112



Man in a Derby
Lynchburg, Va.
'S-E' PH-F 27, p.112

Pictorials

Figures and Heads

h

Devil with Pitchfork
Meriden, Conn.
'S-E' PH-F 40, p.113

Witch
Salem, Mass
'S-E' PH-F 44, p.113

Ar

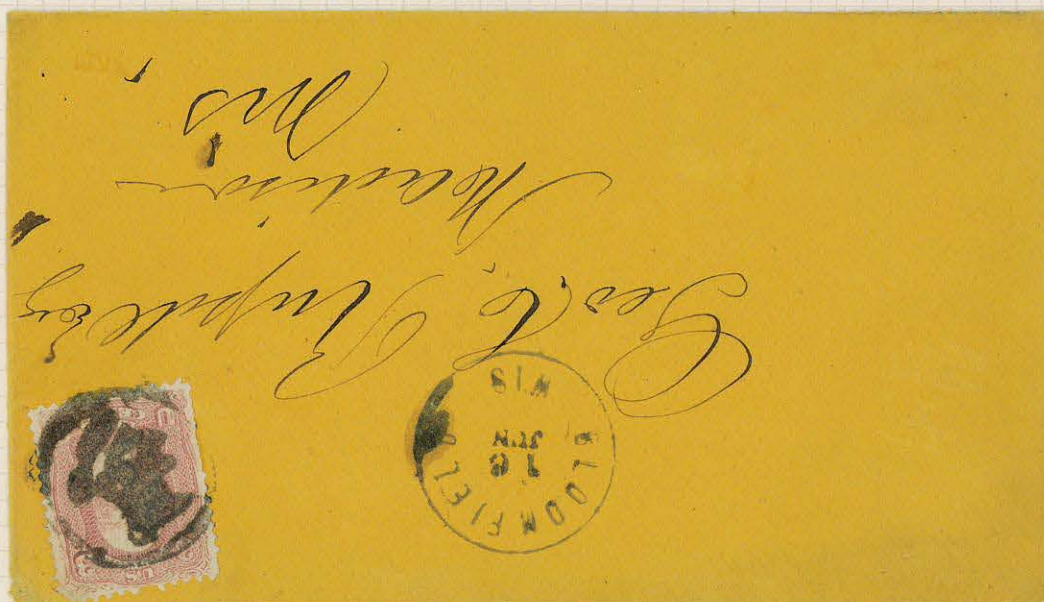


Woman in Profile
Owasso, Mich.
'S-E' PH-F 63, p.115



Bald Headed Man
Baltimore, Md.
'S-E' PH-F 66, p.115

Union Soldier
New York, N.Y.
'S-E' PH-F 73, p.116



Indian Princess
Bloomfield, Wis.
'S-E' PH-F 29, p.112

Pictorials

Figures and Heads



Clown Face
Elizabeth, N.J.
'S-E' PH-F 68, p.115



Pictorials

Figures and Heads

dv

Man with a Goatee
Corry, Pa.
'S-E' PH-F 87, p.117



Sailor with a Queue
'S-E' PH-F 109, p.119



School Marm
'S-E' PH-F 88, p.118

dv

Bust of Fremont
Atlanta, Ga.
'S-E' PH-F 76, p.116



Roman Soldier
New York, N.Y.
'S-E' PH-F 81, p.117

dv

Man in the Moon
Boston, Mass.
'S-E' PH-F 91, p.118



Laughing Clown
Memphis, N.Y.
'S-E' PH-F 94, p.118



Blacksmith
Bloomingburgh, N.Y.
'S-E' PH-F 107, p.119



Spook
Vicksburgh, Miss.
'S-E' PH-F 111, p.119



Mask
Darien Depot, Conn
Not in S-E

Pictorials

Masks, Skulls and Pumpkin Heads



Mask
Columbus, Wis.
'S-E' PH-M 8, p.120



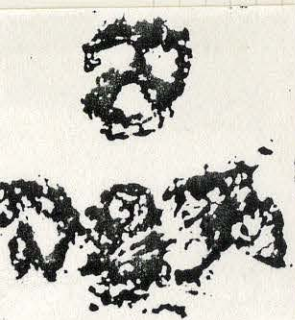
Pumpkin Head
Not in S-E



Mask
Dayton, Ohio
'S-E' PH-M 29, p.122



Skull
Cambridge, Mass.
'S-E' PH-M 32, p.123



Skull and Spirit Owl (from a tombstone)
Troy, N.Y.
Not in S-E

Pictorials

Hearts



Philadelphia, Pa
'S-E' PH-H 4, p.130



New York, N.Y.
'S-E' PH-H 25, p.132



Morristown, N.J.
'S-E' PH-H 20, p.131



Redding Ridge, Conn
'S-E' PH-H 37, p.132



"Bleeding Heart"
'S-E' PH-H 48, p.133



"Rosette of Hearts"
Not in S-E



≈ Hyde Park, N.Y.
'S-E' PH-H 1, p.130



New York, N.Y.
'S-E' PH-H 70, p.135
early strike



Leavenworth, Kan.
'S-E' PH-H 43, p.133



Not in S-E
≈ 'S-E' PH-H 43, p.133
smaller

Pictorials

Hearts



Guilford, Conn.
'S-E' CR-C 18, p.134



≈ "S-E" PH-H 50
smaller



Cairo, Ill.
'S-E' PH-H 55, p.134



≈ "S-E" PH-H 50
bolder



"Broken Heart"
Not in S-E



Elizabeth, N.J.
'S-E' PH-H 54, p.134



"Broken Heart"
Not in S-E



Dayton, Ohio
'S-E' PH-H 68, p.135
[Meinhard - Postmaster]
ex Eno

Pictorial

Animals



"Bluebird"
Rockford, Ill.
'S-E' PA-B 18, p.137

R



"Duck's Head"
Elizabeth, N.J.
'S-E' PA-B 8, p.136



"Bat"
Hingham, Mass.
'S-E' PA-Bt 1, p.138

R

PM named "Fox"
Hockanum, Conn.
'S-E' PA-D 6, p.139
variant

R



"Running Stag"
Shelburne Falls, Mass.
'S-E' PA-Dr 1, p.140

"Deer's Head"
'S-E' PA-Dr 8, p.140



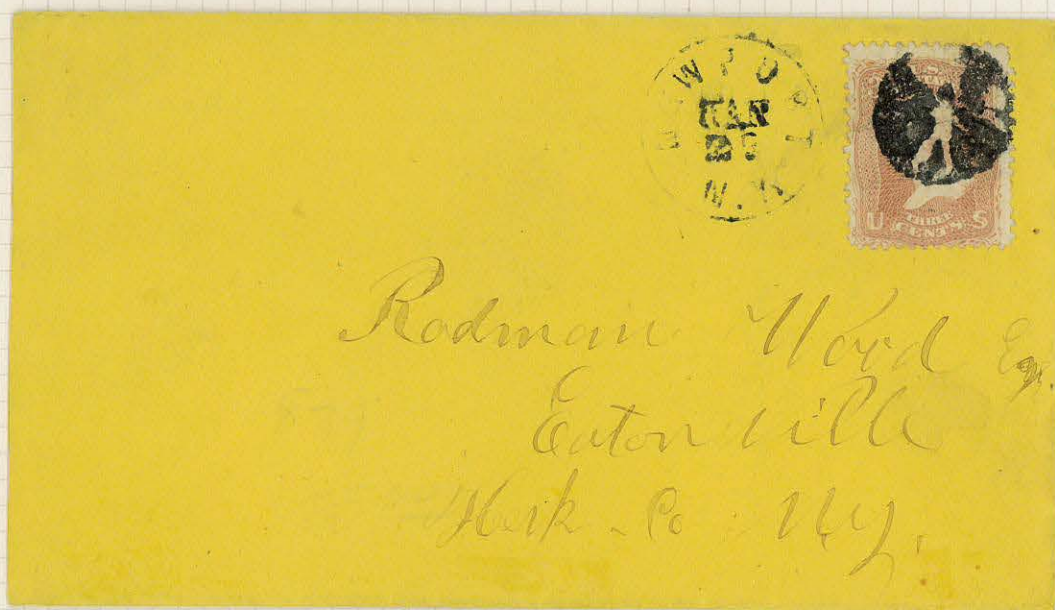
"Cat"
Cambridge, Mass.
'S-E' PA-C 2, p.138

Pictorials

Animals and Insects



"Hog's Head"
Not in S-E



ex Rholoff

"Winged Flyer"
Newport, N.Y.
Not in S-E

Pictorials

Animals and Insects



"Turtle Back"
Alexandria, Va.
'S-E' GE-M 6, p.75



"Horse Head"
New York, N.Y.
'S-E' PA-H 13, p.144

"Horse Head"
Knoxville, Tenn.
'S-E' PA-H 13p.143



"Fly"
Freeport, Ill.
'S-E' PA-I 15, p.146



Stylized Butterfly
Worcester, Mass.
'S-E' PA-I 23, p.146



"Bee"
Not in S-E



"Bee"
Meriden, Conn.
'S-E' PA-I 36, p.147



"Bee"
Not in S-E

Pictorial

Plants



"Clover"
New Haven, Conn.
'S-E' PP-C 4, p.149



"Clover"
Boston, Mass.
'S-E' PP-C 5, p.149



"Apple"
'S-E' PP-Jr 4, p.152



"Apple"
Charleston, S.C.
Not in S-E



"Acorn"
Cincinnati, Ohio
'S-E' PP-N 2, p.157
(retouched after wear)

Pictorials

Planta



"Flower"
Lansing, Mich.
'S-E' PP-FI 24, p.155



"Rose"
Not in S-E



"Rose"
Amherst, Mass.
'S-E' PP-FI 3, p.154



"Flower"
Cornwall, Vt.
'S-E' PP-FI 27, p.156



"Flower"
Joppa Village, Mass.
'S-E' PP-FI 20, p.155



"Flower"
'S-E' PP-FI 28, p.156

Pictorials

Plants



"Sheaf of Wheat"
Wheelersboro, Ohio
Not in S-E



"Tree"
Thomaston, Conn.
'S-E' PP-T 3, p.164

Pictorials

Plants



"Tree"
Media, Penn.
'S-E' PP-T 1, p.164



"Leaf"
Not in S-E



"Leaf"
Frederick, Md.
'S-E' PP-L 49, p.163



"Leaf"
Cheyenne, Dakota Terr.
'S-E' PP-L 52, p.163



"Leaf"
Not in S-E



"Leaf"
Joppa Village, Mass.
'S-E' PP-L 44, p.162

Pictorials

Anchors



Double Anchor
Putnam, Conn.
'S-E' PO-An 14, p.166



Anchor with Stars
Newark, N.J.
'S-E' PO-An 17, p.167



Anchor with Stars
Not in S-E



≈ 'S-E' PO-An 25, p.167
but positive



Blue Anchor, Framed
Pompey, N.Y.
'S-E' PO-An 11, p.166



Fouled Anchor
Fayville, Mass.
'S-E' PO-An 33, p.168



Pictorials

Various Objects



Bow Tie
Norwalk, Conn.
'S-E' PO-Bw 2, p.171



Beer Mug
Not in S-E



Bow Knot
Not in S-E



Cavalry Boot
Whitestone, N.Y.
'S-E' PO-Bt 6, p.172



Top Hat
'S-E' PO-Ht 6, p.171



Coin
Milford, Ind.
'S-E' PO-Co 4, p.173

2

Two Cent Coin
Marshall, Mich.
'S-E' PO-Co 1, p.173

Look-a-Likes or Copy-Cats

It is not surprising that some of John Hill's fellow Connecticut postmasters should have looked upon him with envy and tried the copier's touch. Few did as well as his colleague in Bridgeport, who produced an admirable rosette.



*Rosette, similar to Hill's in the late 1860's.
Bridgeport, Ct. drop letter, circa 1867*

The Brattleboro Cancellations

Man chasing a fox from a henhouse
Not in 'S-E'



Masonic "Square and Compass"
'S-E' FR-M3a 17, p. 228

The Granger Cancellations

In the first half of the Banknote Period, another imaginative postmaster joined his Waterbury and Brattleboro peers and produced the attractive markings found on mail from Granger, Indiana, circa 1875. The townmark is a large, ornamental "G" with "RANGER" in an arc at top within. A star is seen in the lower serif and an anvil appears between the year date and "IND". The townmark is accompanied by a variety of fancy obliterators.



Obliterator: Small "G" above, Odd Fellows Links below, connected by an ornate frame.
Not in JMC

The Granger Cancellations



Obliteration: Ornate "G" in an oval frame.
'JMC' Lg-13, p. 255



Obliteration: ornate "G" in a pointing hand.
Not in 'JMC'

Letters

Single

The initial of a single-letter cancellation was often that of the town of origin.



"D"
Not in S-E



"F"
Ford Furnace, N.J.
Not in S-E



Aleph
(Hebrew)
Not in S-E



"L" in a Star
*≈ 'S-E' LS-T 17, p.298



"L" reversed
Lockport, N.Y.
'S-E' LS-L 1 p.289



"L"
Brooklyn, N.Y.
'S-E' LS-L-11, p.290



"O"
Orland, Ind.
'S-E' LS-O 2, p.293



"R"
Rockville, Conn.
'S-E' LS-R 15, p.295



"R"
Ridgefield, Conn.
'S-E' LS-R 17, p.296



"T"
Titusville, Pa.
'S-E' LS-T 13a, p.297



"W"
Weston, Mass.
'S-E' LS-W 24, p.302
Quill Pen

Letters

Single



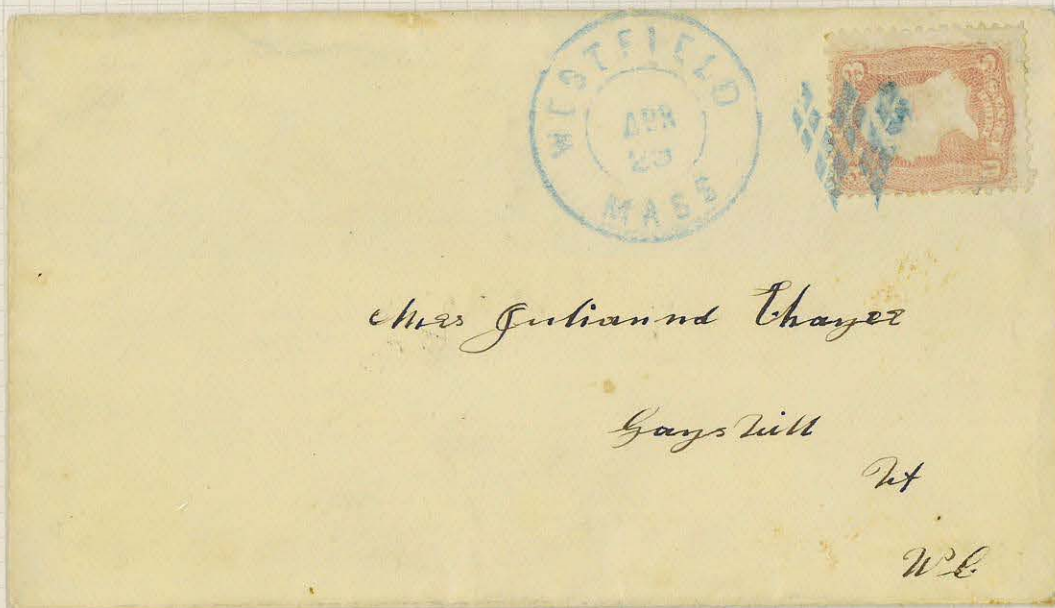
"C" - Altered Numeral "5"
Cecilston, Md.
'S-E' LS-C 10 p.290



"K"
Kokomo, Ind.
Not in S-E

Letters

Single



"W"
Woodfield, Mass.
Not in S-E



"V"
Valparaiso, Ind.
'S-E' LS-V-8, p.299

Letters

Initials, Monograms



"H P / NC 68"
High Point, NC
'S-E' ND-Y 13, p.307



"L-B"
(Leonard Buckland, P.M.)
West Hartford, Conn.
'S-E' LC-L 1, p.307



"P.O."
'S-E' LC-P 13, p.314



"V"
Chester, Vt.
'S-E' LC-V 4, p.315



"P.O."
Oxford, N.Y.
'S-E' LC-P 15, p.314



C.L. Fritz
'S-E' LC-R 3, p.314

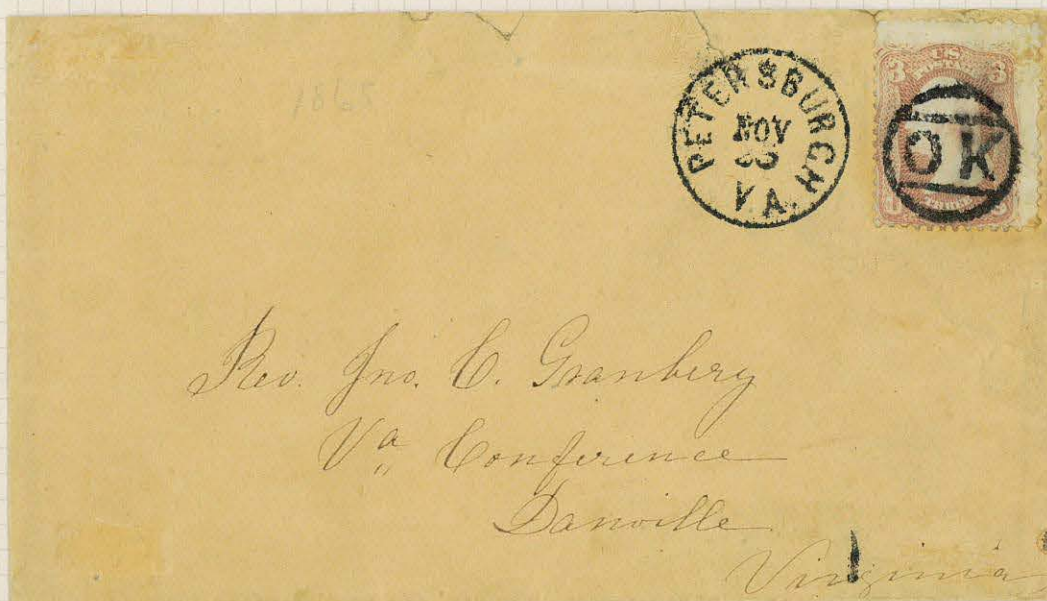


Monogram of Postmaster C. L. Fritz

"C" is outside border.
"L" is to right of "R".
"F" is inside the "R".
"R" is easily seen.
"I" runs top to bottom, breaks "Z".
"T" uses vertical of "I", has cross at top.
"Z" shows clearly.

Letters

Initials, Monograms



"OK"
Petersburgh, Va.
'S-E' LC-OK 32 p.312



"S"
San Francisco, Cal.
'S-E' LC-S 2 p.314

Letters

Full Words; Names and Phrases



"Hail Columbia"
'S-E' WD 4, p.316



"DAY"
New York, N.Y.
'S-E' WD 5, p.316



"NLX"
Woonsocket Falls, R.I.
'S-E' WD 7, p.316

X

Shoo FLY
Waterbury, Conn.
'S-E' PA-Is 7, p.317

X



"USED AND DONE FOR"
Fairhaven, Conn.
'S-E' LC-NP 7, p.318

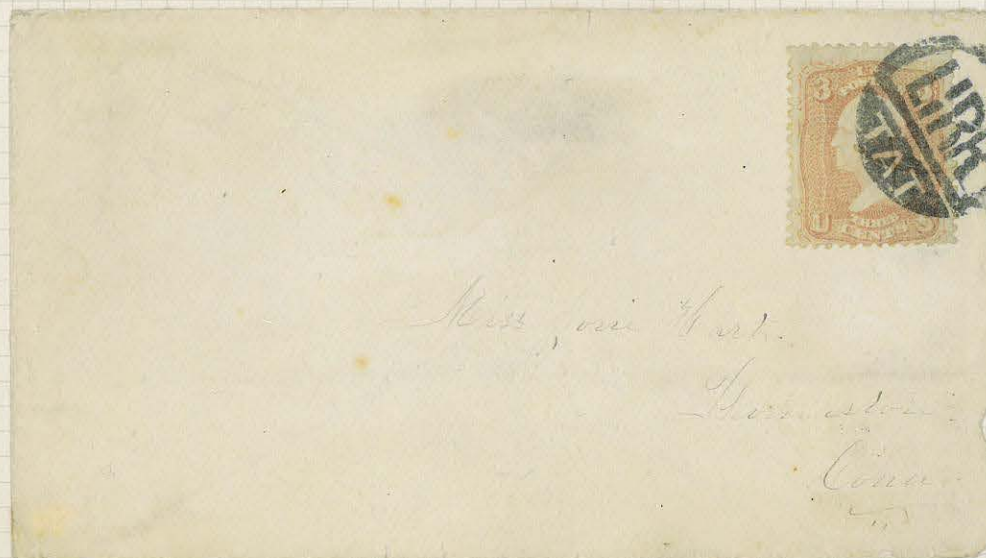
"USED"
Niagra Falls, N.Y.
'S-E' WD 12, p.317



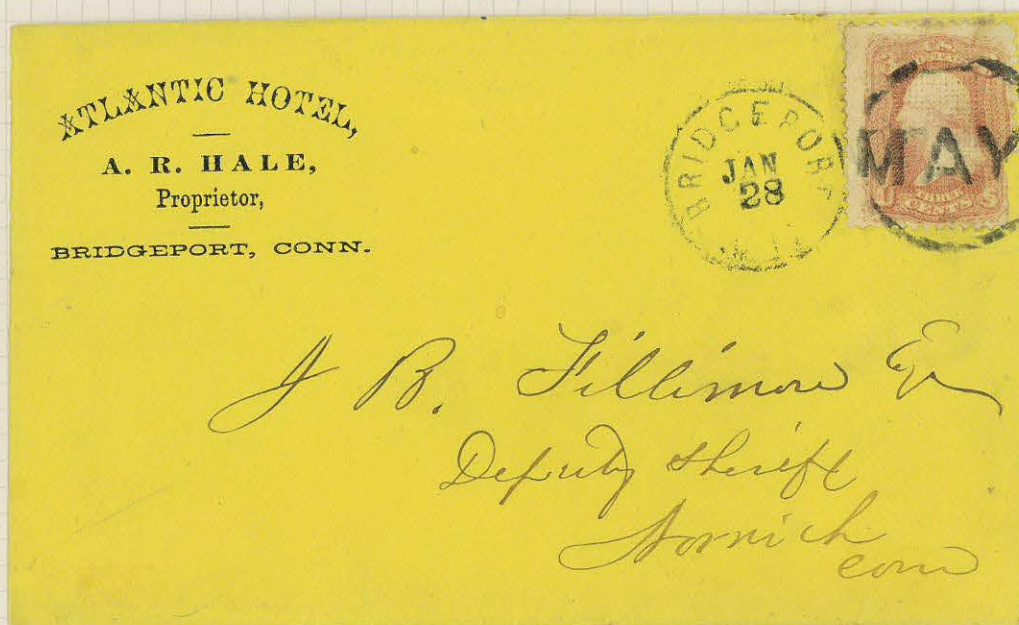
"GLEN"
Macedon, N.Y.
'S-E' LC-NP 4, p.318
Postmaster's Signet Ring

Letters

Initials, Full Words



"LIRR / TAT"
'S-E' LC-L 4, p.309
Long Island R. R. / A. J. Tattersall, Route Agent



"MAY"
Bridgeport, Conn.
'S-E' LC-WD 6, p.316
Frank H. May, P. O. Clerk

Postal Markings

Drop Letters; Carrier Service

From July 1, 1851 through June 30, 1863 both drop letter and carrier rates were one cent. Handstamps used on unpaid drop letters can be found used as cancellers, while 1c stamps used to prepay the carrier fee are invariably cancelled by a carrier marking.



"Drop"
New Orleans
'USPM' p.229-8



"Drop 1c"
San Francisco
'USPM' p.229-11



"U S Penny Mail"
Philadelphia, Pa.
'S-E' PM-CR 16, p.338



"New York Paid City Delivery 1c"
USPM p.237-22



"New York City Paid 1c"
'S-E' PM-CR 11, p.338

Postal Markings

Advertised Letters

Letters that were not called for were "advertised", that is they were listed in the local newspaper. Upon claiming a letter, the addressee paid a fee of 1c for this service.



"Advertised 1ct"
Deerfield, N.Y.
USPM p.247-11



"Chicago Advertised"
USPM p.247-9

Postal Markings

Advertised Letters



"New York Post Office Advertised"
"Cannot be Found"
Penciled memoranda by carriers of attempts to locate.
Not in S-E



"Not Found"
Rockville, Mass.
Not in S-E

Postal Markings

Railroads



Potomac Postal Cars
Not in S-E



Patterson Creek B. & O. R.R.
Station Agent's Stamp
≈ S-E' PM-RR 13, p.341

h

"N & W" with Star
Norwich & Worcester R.R.
LC-N 4, p.310



Maltese Cross used by Route Agent
on Wilmington & Raleigh R.R.
S-E' CR-M 1, p.81



Concord & Montreal R.R.
Not in S-E



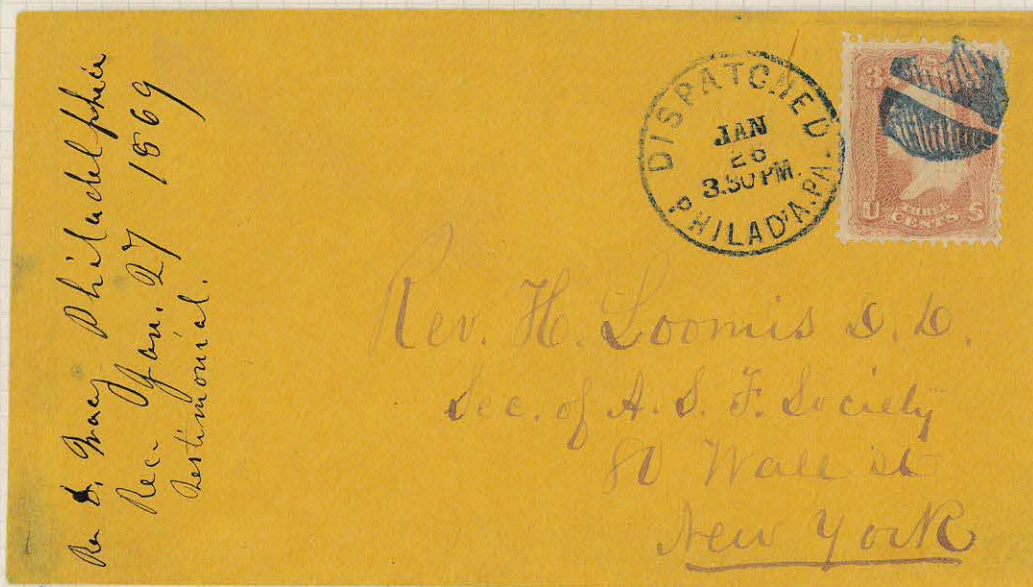
Adamstown B. & O. R.R.
≈ S-E' PM-RR 12, p.341

Postal Markings

Railroads



"Railroad Way"
Picked up en route as a Way letter, cancelled at the Detroit P.O. rather than by a Route Agent on the train.
Not in S-E



ex Eno

Letter headed Reading, Pa. Handed to conductor on train, not route agent.
Entered mails at Philadelphia: "Dispatched Philadelphia"
Obliteration is 'S-E' SD-M 20, p.38

Postal Markings

Railroads

Circular date stamps with the legend "U.S. Express Mail" were used by route agents on the line between New York and Boston.



"U.S. Express Mail, N. York"
'S-E' PM-RR 5, p.241



"U.S. Express Mail, Boston"
'S-E' PM-RR 6, p.241

Postal Markings

Markings Associated with Inland and Coastal Waterways



"Mail Route"

Applied to mail picked up by contract mail steamers serving the coastal areas above and below Savannah, Ga. A local substitute for a "way" marking
'S-E' PM-RM 5, p.340



"Troy & New York Steamboat" and associated "2 cts" due marking.
'S-E' PM-RM 6, p.340 *Not in S-E*



"Steam 5"
Mobile, Ala.
Not in S-E



"Steamer Katahdin"
Maine Coastal Packet
'S-E' PM-SR 4 6, p.335

Postal Markings

Inland and Coastal Waterways Route and Name-of-Boat Markings



"Balto. & Norfolk Boat"
Route Marking
Not in S-E



"New Orleans, Alexandria, Natchitochas & Grand Loore Weekly Packet St. Nicholas"
Route and Name-of-Boat Marking
Not in S-E

Postal Markings

Western Mails

Because of inadequate government postal facilities to serve the new towns and scattered goldfields in the Far West, a number of express companies, most notably Wells Fargo, established routes. Their charges were customarily met by their franks on government stamped envelopes, but additional U.S. postage was at times required.



"Collect"
Wells Fargo
USPM p.351



"Wells Fargo & Co. Victoria"
U.S. stamp used in British Columbia
≈ 'S-E' EX 1, p.342



"Wells Fargo & Co."
Sacramento
≈ 'S-E' EX 1, p.342



"Wells Fargo & Co."
Large Circular cds.
'S-E' EX 2, p.342



"Via Nicaragua
Ahead of the Mails"
USPM p.377-3

Postal Markings

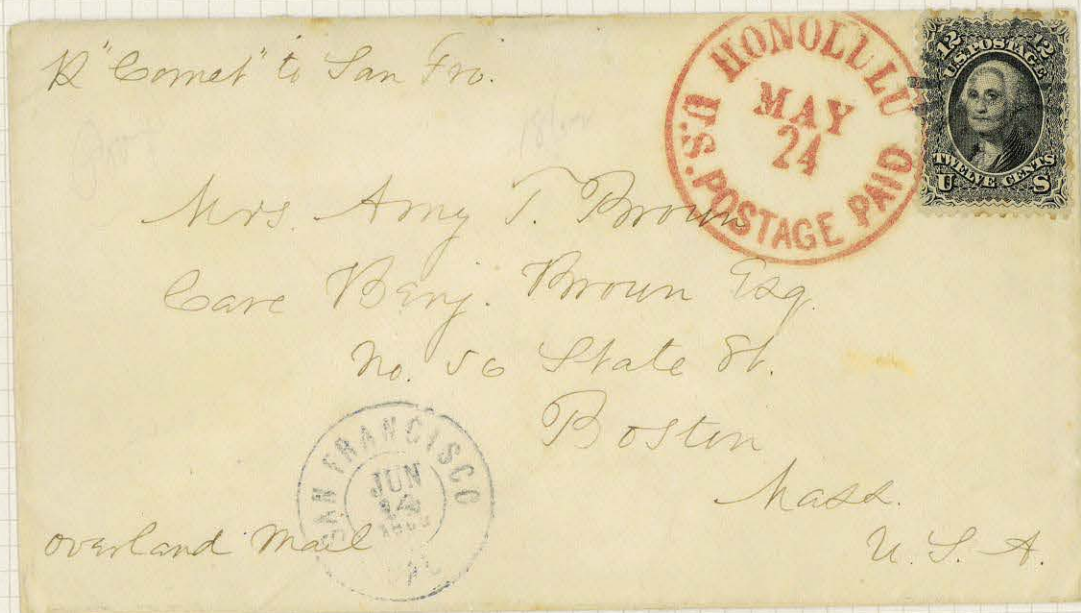
Incoming Foreign Mails



"Steamship" in a postmark indicates that the cover was carried by a contract mail packet.
The cancellation was invariably applied at the port at which the cover entered the U.S. Mails.
New York, N.Y. ≈ 'S-E' PM-SS 2, p.335



"Steam/Ship"
New York, N.Y.
'S-E' PM-SS 1, p.335



"Honolulu U.S. Postage Paid" Struck in Hawaii, Hawaiian postage evidently paid in cash.
The 12s stamp, applied in Hawaii, was cancelled in San Francisco.
It paid the 2c Ship Letter fee and the 10c rate from the Pacific Coast to Boston.

Postal Markings

Markings Related to Outgoing Foreign and Other Ocean Mails



"Too Late"

Applied to letters arriving at New York too late for departure on the endorsed ship and held over until the next departure to the country of address.

USPM p. 255-2



"Ocean Mail" consisting of a New York cds with a small enclosed grid was largely used on mail to the Pacific Coast via Panama but is occasionally found on overseas mail.

'S-E' PM-OM 1p.342 This marking in red is rare, fewer than 10 known.



PM



The "Supplementary Mail" marking represents a special service accorded mails arriving after the scheduled closing time on outgoing foreign mail at New York where an extra charge was made for this service.

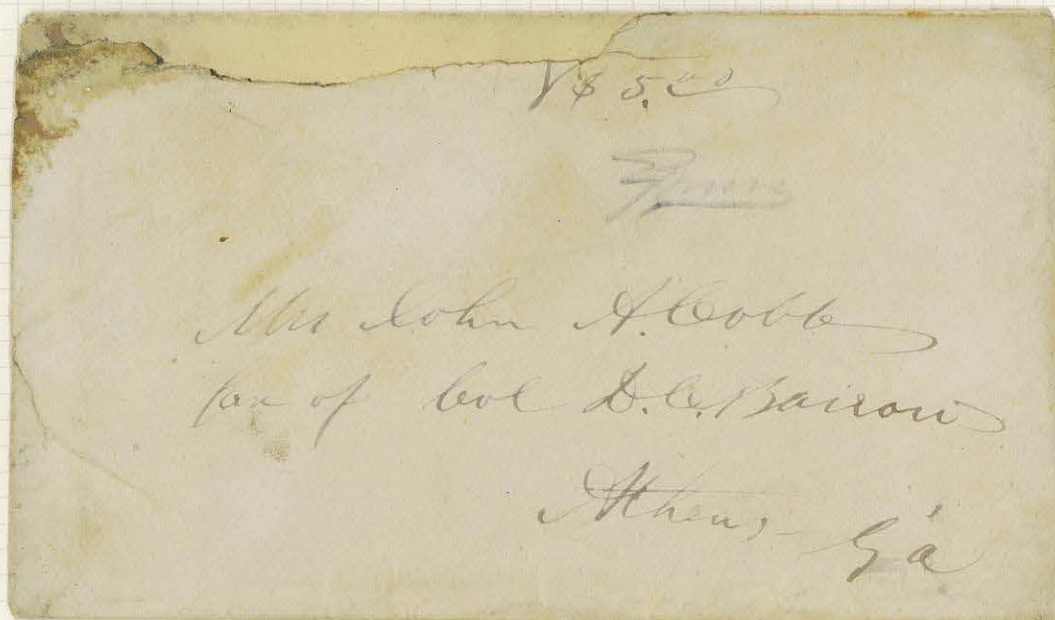
'S-E' PM-SM 3, p.333

Postal Markings

The Civil War -- Slave Mail and Express Mail



Carried by slave Henry from one of the Cobb plantations to Macon, Geo. in 1861
Endorsed "Per Henry & Horse" so that, if stopped, Henry would not be thought escaping with a stolen horse.



Carried outside the mail at a declared value of \$5 by one of
the many small express companies which tried to fill the gap
as the Confederate States Postal System faltered in 1865.

Postal Markings

The Civil War -- Independent States and the Break in Postal Service



Augusta, Georgia, Jan. 25, 1861

Georgia seceded from the Union January 19, 1861 and joined the Confederacy Feb 4, 1861
Thus it was an "Independent State" for 16 days

Following the break in postal relations between the North and the South,
new stamps were issued by the Union in September 1861; the old were invalidated.



"Old Stamps / Not Recognized"

Philadelphia, Pa.

'S-E' PM-OS 1, p.336

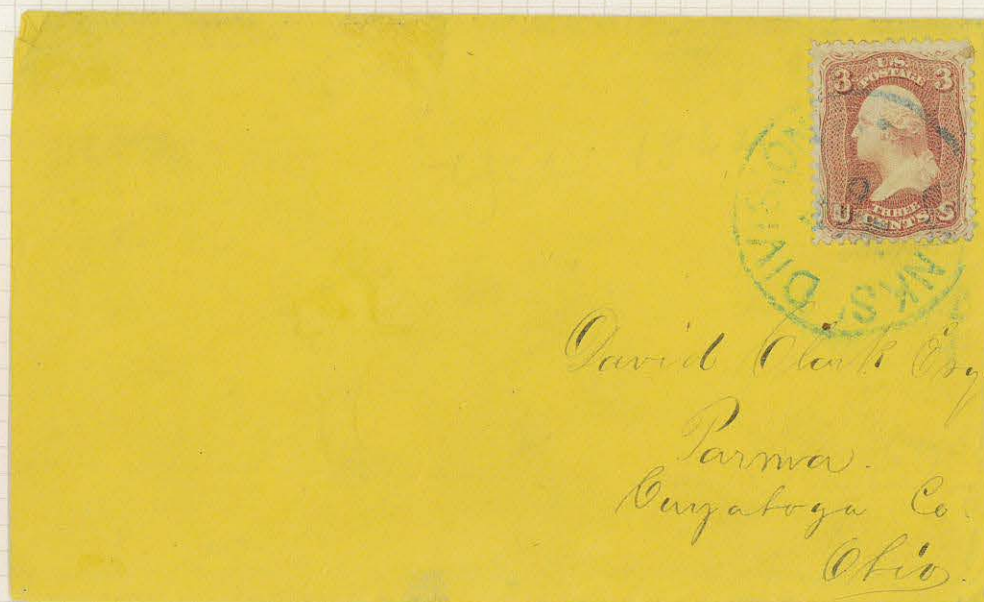
Postal Markings

The Civil War -- General Banks' Division

Markings relating to "Banks Division" are those of a Union Field Post Office.



"G B D / Nov 8"
Initials of "General Banks' Division"
'S-E' LC-G 2, p.306



"Banks' Division"
Blue cds
'S-E' PM-FT 2, p.342

Postal Markings

The Civil War -- U. S. Ship

The "U.S. Ship" marking was applied at post offices in various ports of entry to letters which, written aboard United States Naval Vessels, entered the mails as ship letters. The customary ship letter fee was waived.



"U.S. Ship" in a double circle with ornaments
Philadelphia, Pa.
S-E PM-SH 3, p. 334

Postal Markings

The Civil War -- Union Prisoner-of-War Camps

X

Ms. townmark "Granada, Ka., July 24"
In a different hand, ms. "Cancelled / U.S. Censor"
"Cancelled" in a circular frame handstamped on the stamp
Not in S-E



"Prisoner's Letter / Examined / GSB / Johnson's Island, O."
Entered the mails at Sandusky, Ohio
Not in S-E

Postal Markings

Wrecks

Railroad and steamboat disasters took their toll in the middle of the 19th Century.



Blue handstamp "Burnt Mail / Mar. 18"

The docketing at the left of the cover (surely not a postmark) indicates that the letter carried by this cover was written at Vicksburg March 4, 1865. The absence of a Vicksburg postmark indicates the probability that it was picked up as a "way" letter by a river steamboat that then had an accident and burned. The mail was recovered, received the New Orleans Mar. 8 1865 postmark, was dried, sorted and sent on its way after receiving the "burnt mail" cachet.

Postal Markings

Unusual Townmarks



In a Shield
Montgomery, Pa.
'S-E' PM-TF 16, p.346



Town Name in a Scroll, with Ornaments
Stoneham, Mass.
'S-E' PM-TF 21, p.347



Stenciled
Guy's Mills, Pa.
'S-E' PM-TF 9 p.346



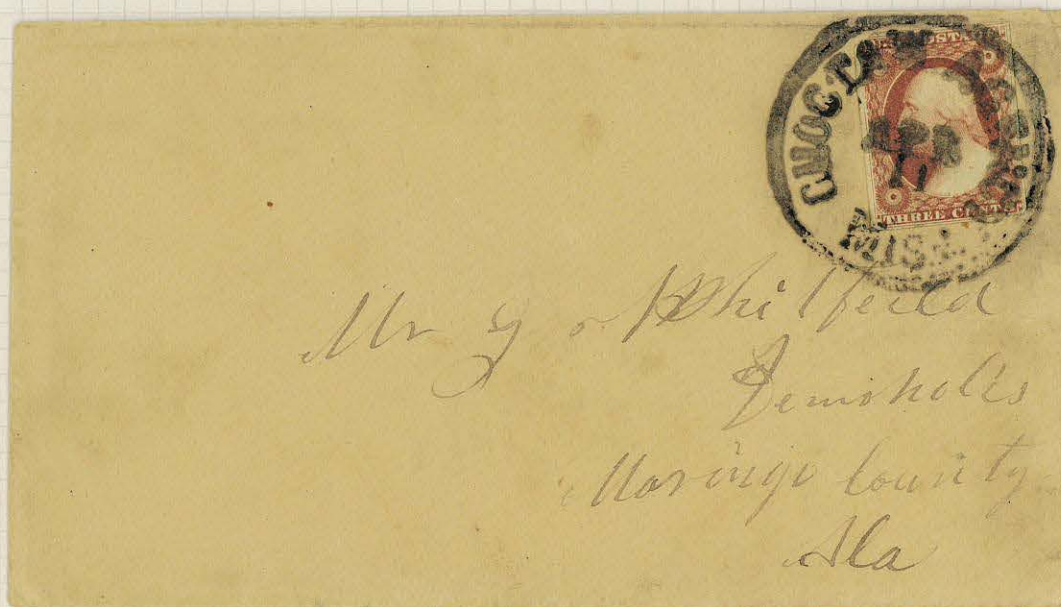
Blue Double Oval with Diamond Ornaments
Utica, N.Y.
Not in S-E

Postal Markings

Unusual Townmarks

h

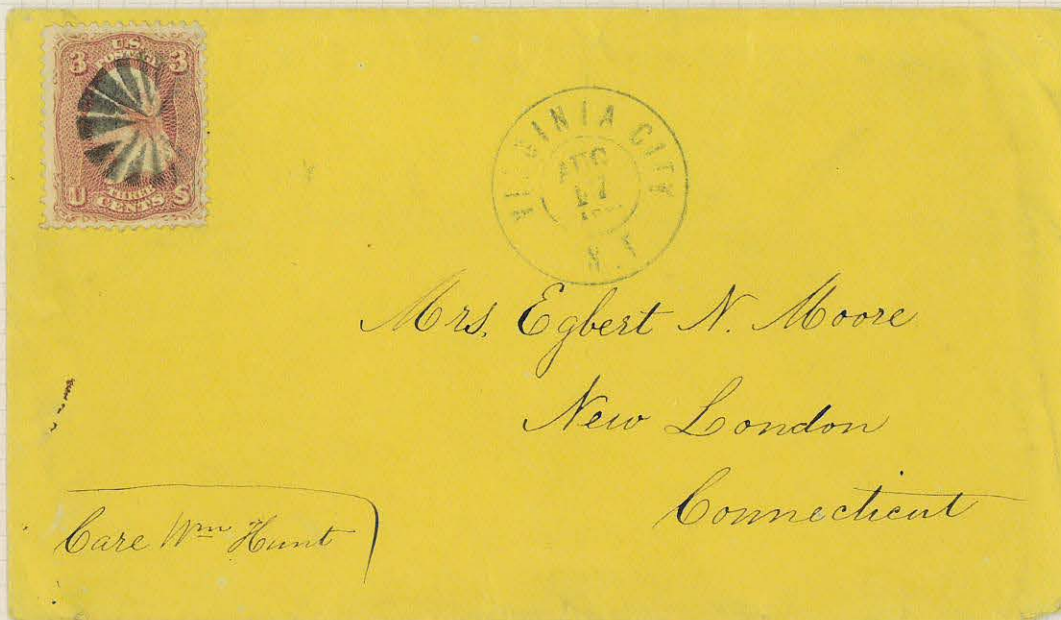
Townmark Reads "Paid by Stamps"
Marysville, Cal.
Not in S-E



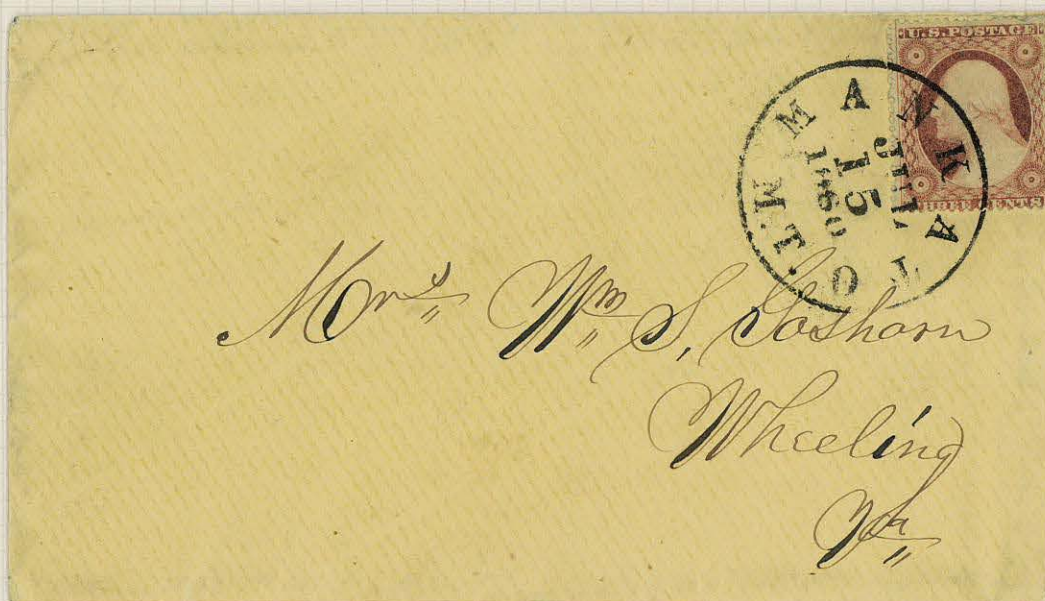
Choctaw, Agency, Miss.
The "Five Civilized Tribes" in Indian Territory (later Oklahoma) administered from Washington
and a field office which, at the date of this cover (circa 1856), was in Northern Mississippi.
Not in S-E

Postal Markings

Unusual Townmarks - Territorials



Virginia City, N.T. Aug. 17, 1864
Nevada became a Territory Mar. 2, 1861 and a State Oct. 31, 1864.
Not in S-E



Mankato M.T. Jul. 15, 1860
Minnesota became a Territory Mar. 3, 1849 and a State May 11, 1858.
The territorial postmark is here used nearly two years after statehood,
Not in S-E

Postage Stamps Used as Revenues

An attempt to use a revenue stamp in lieu of a postage stamp was rarely tolerated by the postal authorities. In contrast, postage stamps appear to have been readily accepted as a substitute for revenue stamps.



*Bailey Springs / Near Florence Alabama
Ellis & Co. Propriators
Not in S-E*



*A.H. Pride / New York
'S-E' PM-RV 1, p.342*



*Dodge & Co / Williamsport
≈ 'S-E' PM-RV 7, p.342*



*E. Michelera / New York
Not in E-E*

U. S. Postal Services "Abroad"

The United States had postal agencies outside of the territorial U. S., established through treaties, as in the case of China and Japan; as the result of military action -- those initially established in Cuba, Guam, and the Philippines, for example; and in distant lands that had been annexed to the U. S. as 'territories' -- Alaska and Hawaii.



Yokohama
Japan



CHINA
(Boxer Rebellion)



Hiogo
Japan



Shanghai
China



Santiago
Cuba



Manzanillo
Cuba



Agana
Guam



Mil. Sta. No. 1
Manila, Phil. Islands



US Mil. Sta. No. 2 SF, Cal
Cavite, P.I. Nov 24 98



Alaska



Maui



Oahu

Hawaii

Foreign Markings

Markings employed by foreign post offices are found on U.S. stamps both as an accidental strike of a transit or receiving marking and as a deliberate strike on a stamp which had escaped cancellation when it entered the mails.



Zurich, Switzerland



*Receiving Marking
Belgian*



*"Paquebot"
Used on mail posted at sea.*



*Christiania, Norway
(Now Oslo)*



*"T" in Circle
"Taxe" = Postage Due*

Foreign Markings

France



*Anchor in a Diamond of Dots
Used on Mail Packets
'S-E' PO-An 16, p. 166*



*Star of Dots
Central Office, Paris*



*"P.D."
Paid to Destination*



*"Paris Étranger"
Mark of Entry*



*Le Havre
Transit Marking*



*Paris
Transit Marking*

Foreign Markings

Germany



America / über Bremen / Franco
Transit marking under the Bremen Convention (effective 15 Aug. 1852)
'H' p. 114 (J)



Aachen / Franco
Transit marking under the Prussian Convention
(effective 16 Oct. 1852)
'H' p.88 (P)



Hamburg / date / Franco
'H' p. 159 fig 96

Foreign Markings

Great Britain and Colonies



London
Charing Cross



Hong Kong
B62



Isle of Man
036



London



London



1d
Due Marking



Liverpool



Singapore



Hong Kong



Southampton
Pkt. Letter



Windsor Mills
Que.

Unusual Place Names



"Yankee Jim's, Cal"



Rattlesnake, Cal.

Unusual Place Names

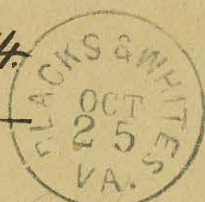
Fernandez De Taos
N. Mex. (Territory)



Rev. T. Harwood
Tiptonville
New Mex.

Answered. Nov. 3/84.
3 Pages.

Wrote again Dec. 17/84.
14 Pages.



Mr. Samuel Dickens
Lawrenceville,
Ga. Co.

Blacks & Whites, Va.



No Refuse

Prof. A. W. ALLEN,

604 GRAND STREET,

Ans Dec 26 83

Ball Play, Ala.

NEW YORK.

Unusual Place Names



Setzlers Store, Pa.



Rasher Iron Works, N.Y.



Total Wreck, Arizona



LoveLocks, Nevada



Alligator, Fla.

Unusual Place Names



Jamboree, Ky.



Wide Awake, Ky.

Unusual Place Names



You Bet, Cal.



Frugality, Pa.

Unofficial Markings

Markings applied by business firms and government offices. When found on off-cover stamps, these may be confused with mail service markings, which are often similar in type. When on otherwise uncanceled stamps, these are possibly the action of an honest clerk, privately obliterating a stamp which had escaped cancellation at the post office.



"Patent"

Probably applied at the Patent Office to an uncanceled stamp.



Hotel Cancellation

Hotels frequently handstamped mail delivered to the P.O. for clients.



"attention"



"Received Mar. -- Chas. W. Set --"

On an apparently uncanceled stamp.



"Cash"



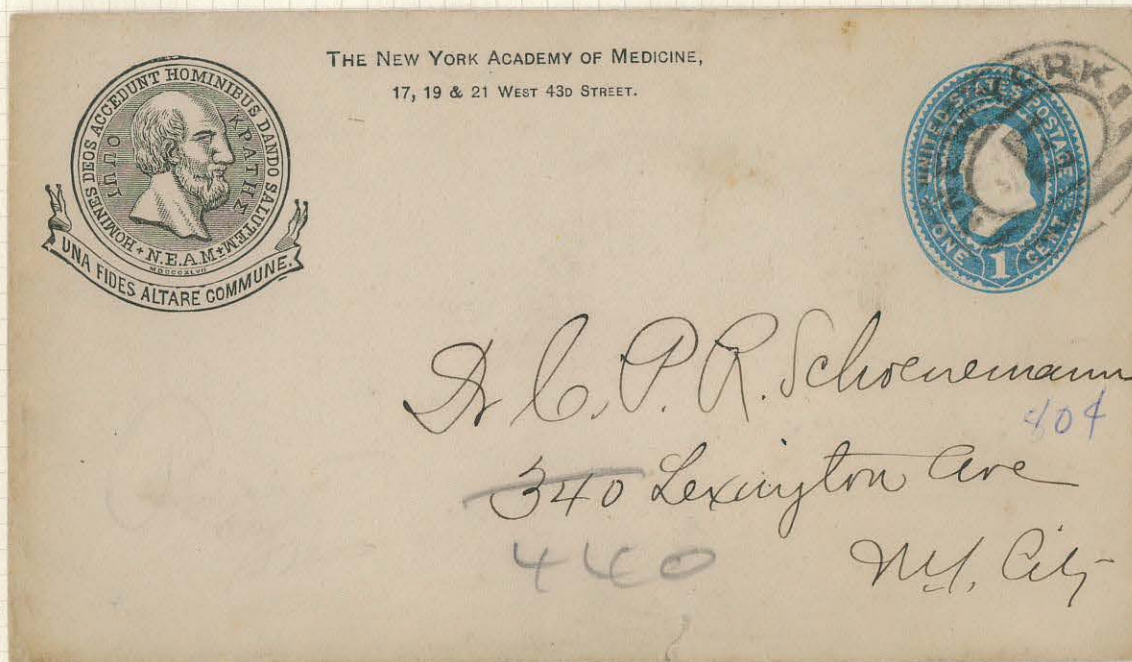
"Night Sorting Service"

Probably a private service for large firms.
Just possibly an official marking.



"In Arrears"

Undated Oval Town Marks



Double Oval; Town Name, Bars, and Letter



Double Oval; Town Name, Bars, and Numeral

Undated Oval Town Marks

A variety of undated oval town markings are found on the 1879 and later issues. As these were principally used on circular mail, they are frequently found on attractive advertising covers.


PARENTS, FARMERS, MECHANICS, EVERYBODY!
 Save half your expense for Boots and Shoes, by wearing only those having the sole attached with

THE STANDARD SCREW.


They cannot Rip. They are perfectly comfortable. They outwear all others. They have no points or roughness to hurt the feet or destroy the Stockings.
Only fastening ever used for positively screwing on the Soles of Boots and Shoes.
 Do not buy Shoes stamped "Standard Fastened," or "Screw Fastened," or "Clinching Screw," or "Climax Screw Rivet."

THEY WILL ALL DISAPPOINT YOU.

TRY



BOOTS AND SHOES,
 And you will never use any other.



*Warren Smith
 Cambria
 Mich.*

Single Oval; Town Name Only

If not called for in 10 days return to

WILLIAM STAHL,

MANUFACTURER OF EXCELSIOR
 SPRAYING
 OUTFITS.




*S. G. Ramon
 Burlington
 Mass*

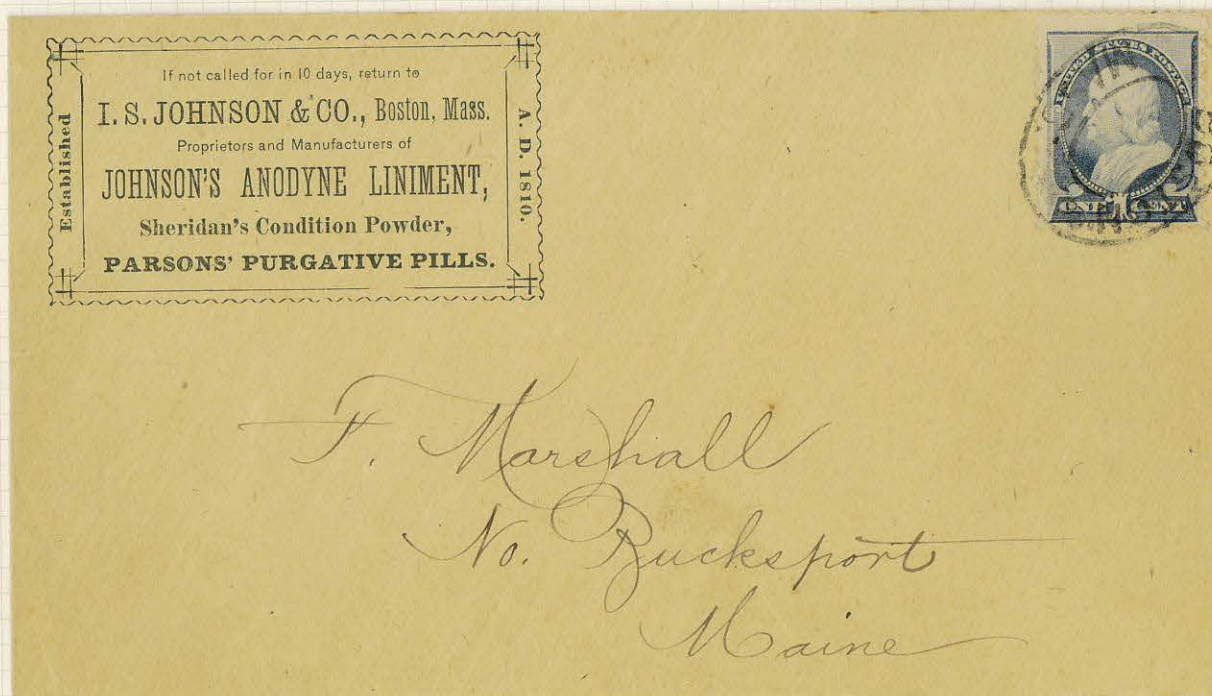
**QUINCY,
 ILL.**
Broadway st.

Single Oval; Town Name Only

Undated Oval Town Marks



Single Oval; Town Name and Bars



Double Oval; Town Name Only