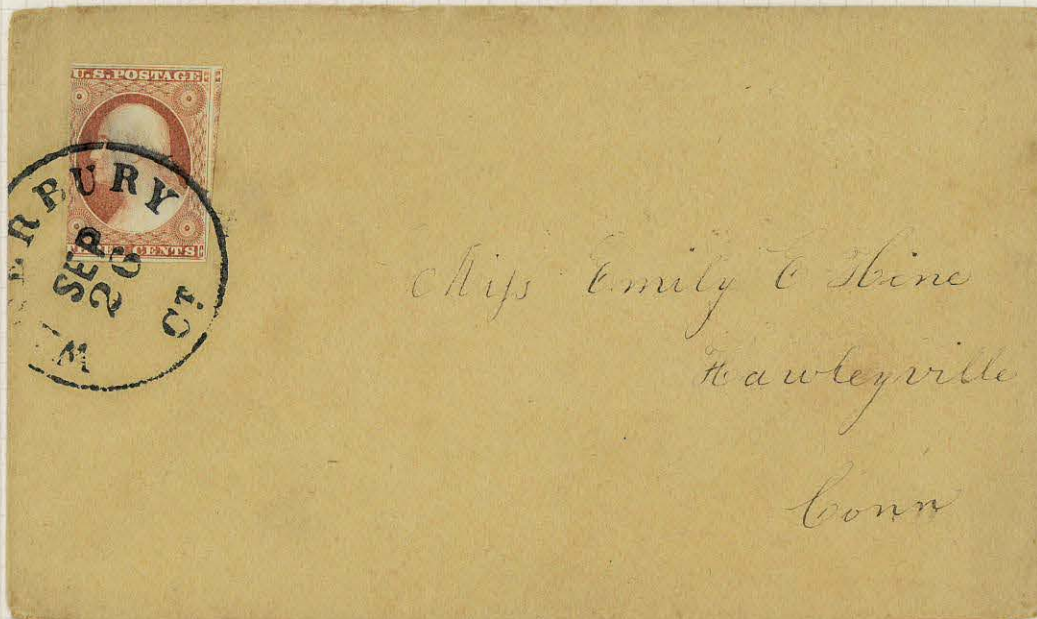


*Pre-Hill Forerunners*

*Prior to the appointment of John Hill to a position in the Waterbury Post Office, the mail from Waterbury had much the same appearance as letters from some thousands of offices elsewhere in the country.*



*3c 1851 from Plate 4 cancelled by a stock 30mm circular date stamp; 1855 use probable.*



*3c 1857 Type II cancelled by a stock 7-bar grid with red double circle date stamp alongside; June 13, 1861*



Pictorials

Figures and Heads







A. E. Clark  
Box 98  
Milford  
Conn

WATERBURY, Conn.,

Return to ELTON BANKING CO.,

if not delivered within 10 days.



Mr. George Semmender  
174 East 9th Street



G-2

Rohloff G-2

"Pumpkin"

Rarity RR

Oct. 11, 1868 - Jul. 24, 1869

1861, 1c and 3c 1867,

3c 1869, 3c entire

New York.



O-1

C. Starkweather Lutton  
196 Chatham Square  
New York



Objects



6/24/187?

Bats, Baseball, and Diamond, II

O-3, RRRR



PFL



A-14  
PFL

Rohloff G-2

"Pumpkin"

Rarity RR

Sept. 11, 1868 - Jul. 24, 1869

1¢ 1861, 1¢ and 3¢ 1867,

3¢ 1869, 3¢ entire



G-2



6/21/70(?) - 5/27/70(?)

Left-Handed Mug, IIa

O-9a, RRRR



*Flowers and Shamrocks*



*Three-Leaf Shamrock, VI*  
12/10/69-12/28/69  
F-13, RRRR



*Three-Leaf Shamrock, IV*  
2/11/72-8/1/74  
F-11, RRR



*Chrysanthemum*  
1/21/70(?)  
F-3, RRRR



*Three-Leaf Shamrock, V*  
early and worn strikes  
2/17/71-2/28/71 F-12, RRR

Return to  
CITIZENS NATIONAL BANK,  
WATERBURY, New Haven Co., Conn.,  
If not delivered within 10 days.



*L. E. Baldum &*  
*New Haven,*  
*Conn*

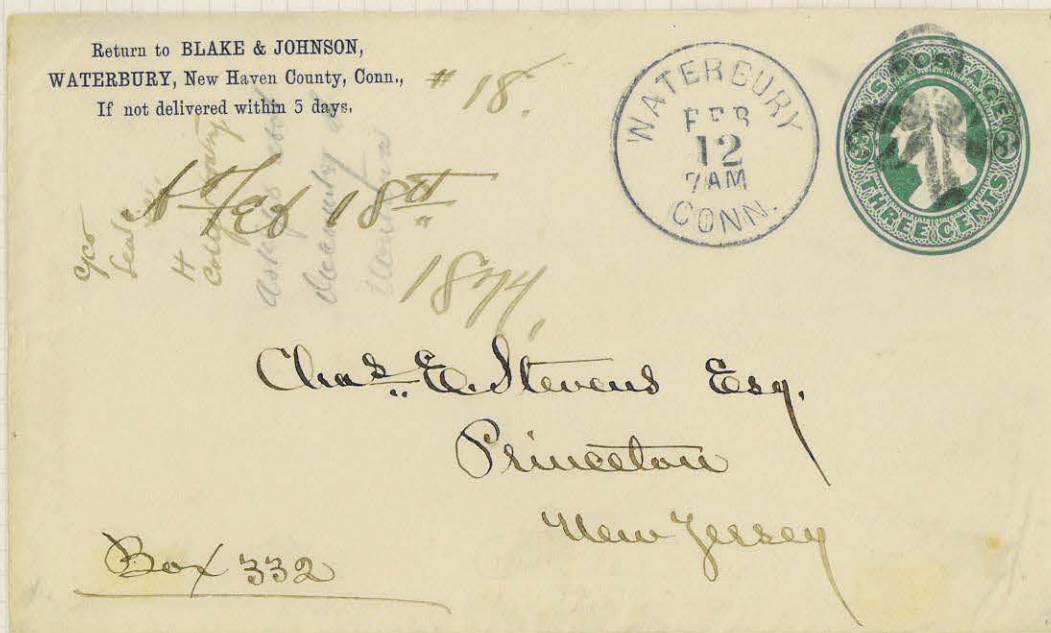
10/16/80-10/21/80

*Five White Petals on Black Fancy Background*

F-7, RRRR



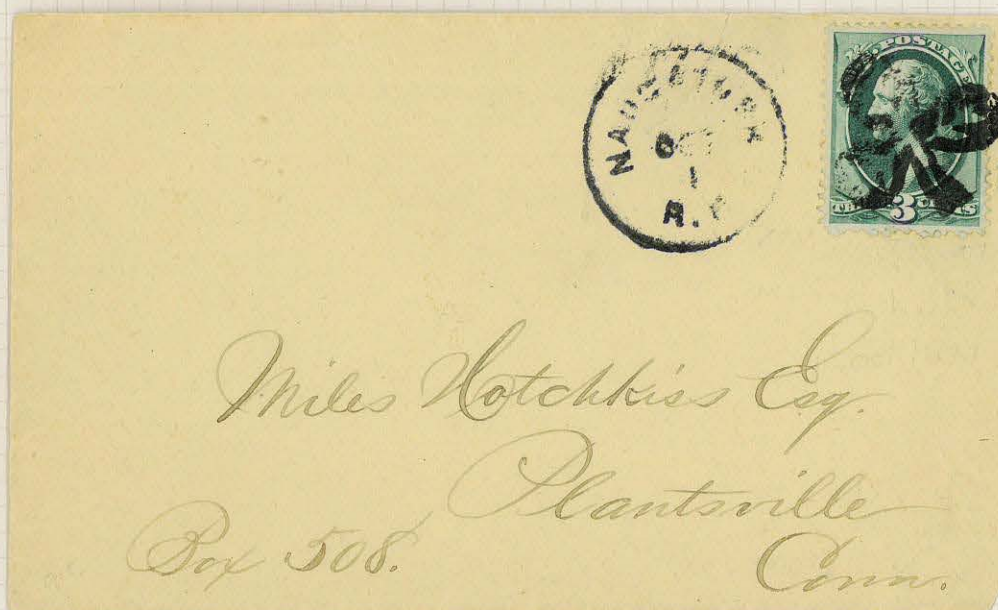
# Flowers and Shamrocks



2/12/74

Three Leaf Shamrock, VII

F-14, RRR



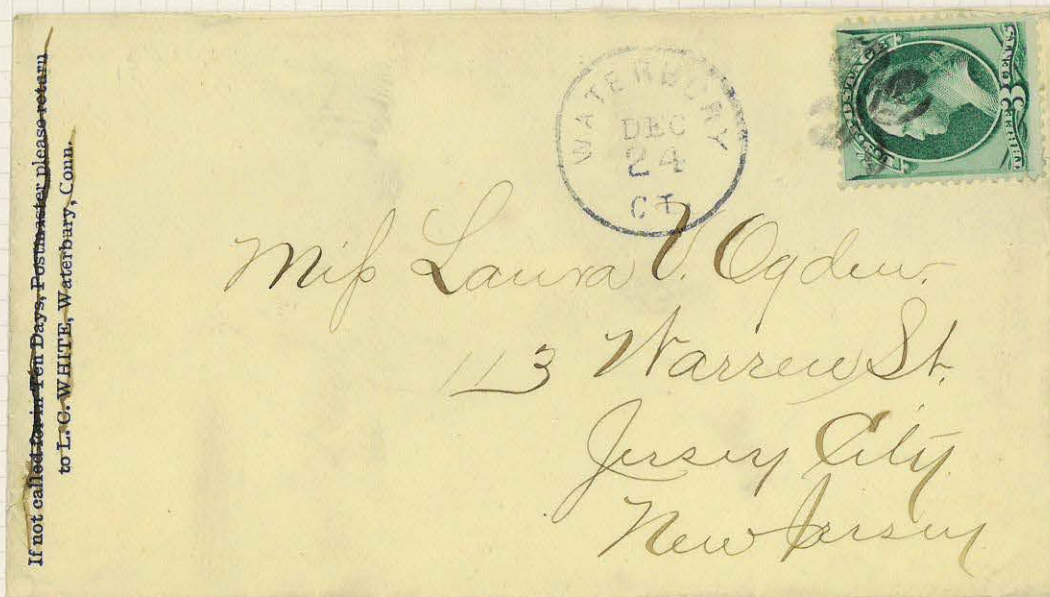
10/1/74

Three Leaf Shamrock, VII

F-14, RRR

This cover is used far out of the period of other examples of F-14, the shamrock handstamp is worn, and it is accompanied by a strike of the Naugatuck Railroad Route Agent's date stamp. It is probable that the letter was handed to a Waterbury clerk after the mails were closed and bagged. As a favor to the sender, he cancelled the stamp with the first "killer" that came to hand and handed the cover to the Route Agent who then applied his own date stamp.





12/22-24/74

Three Leaf Shamrock, II

F-9, RRR



12/15

10, RRR



*Leaves*



*Elm Leaf*  
7/23/66-8/16/66  
L-1, RR



*Maple Leaf, III*  
Feb, 1878  
L-8, RR



*Maple Leaf, VII*  
12/31/77-3/1/78  
L-12, RR



*Maple Leaf, V*  
6/1/7?-6/24/78  
L-10, RR



*Stylized Leaf, Eight Segments, III*  
2/28/75(?) - 4/10/7?  
L-27, RR

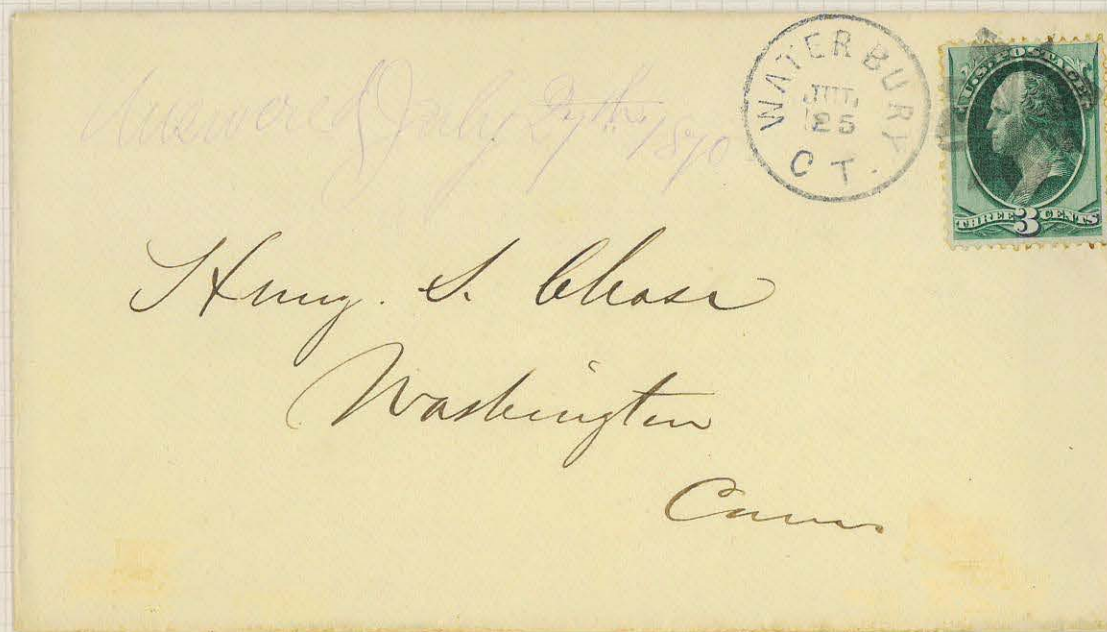




2/8/66-9/6/66

Three-Sectioned Leaf

L-2, RR



114/25/69-7/30/70

Holly Sprig

L-4, RRR





6/22/77-7/6/77

Leaf

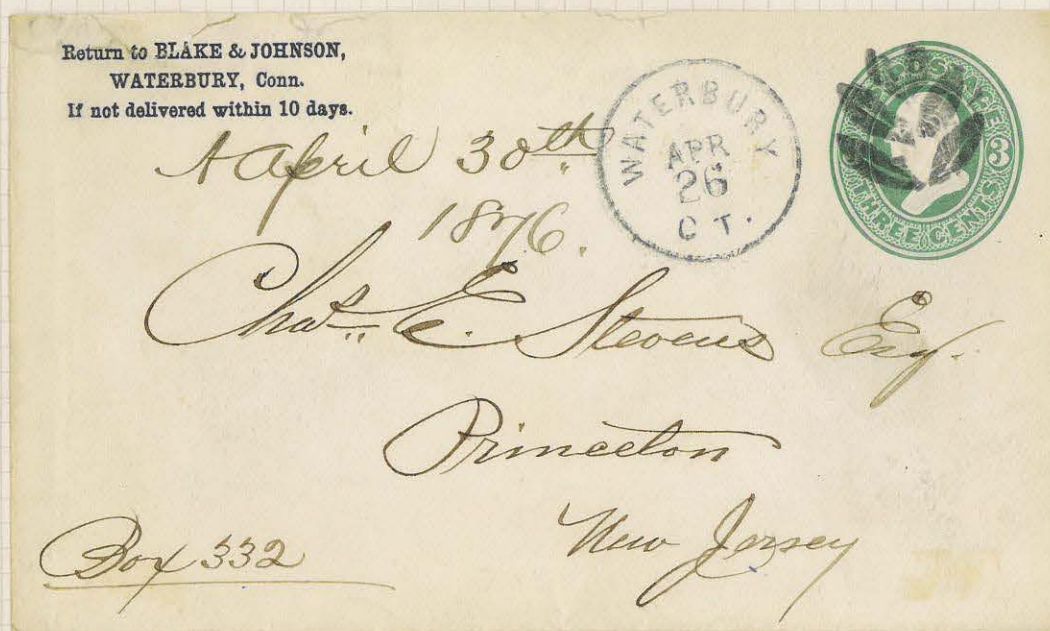
L-5, R

4/7/70-8/15/70

Maple Leaf, 1

L-6, RRR

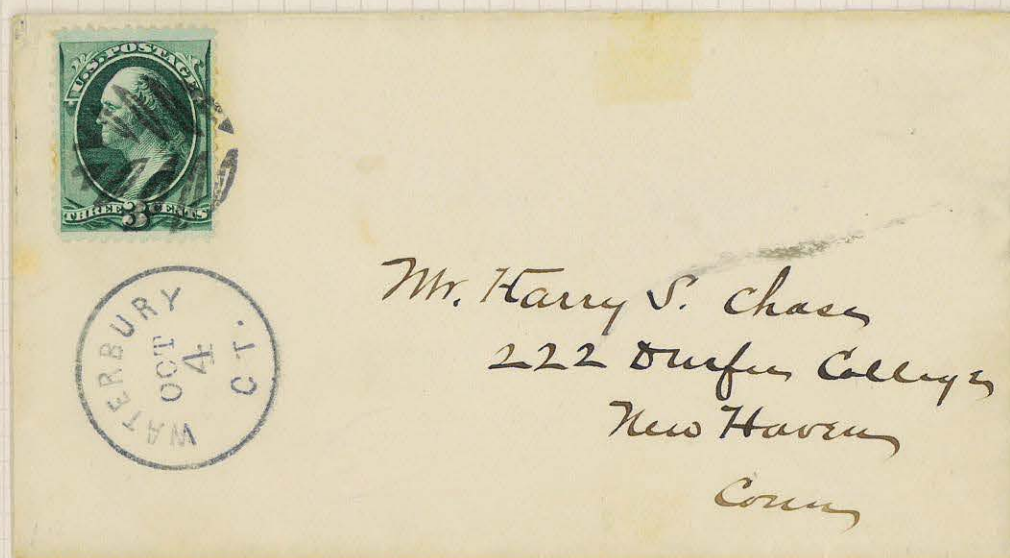




4/26/76

Six-Petaled Leaf, II

L-14, RRR

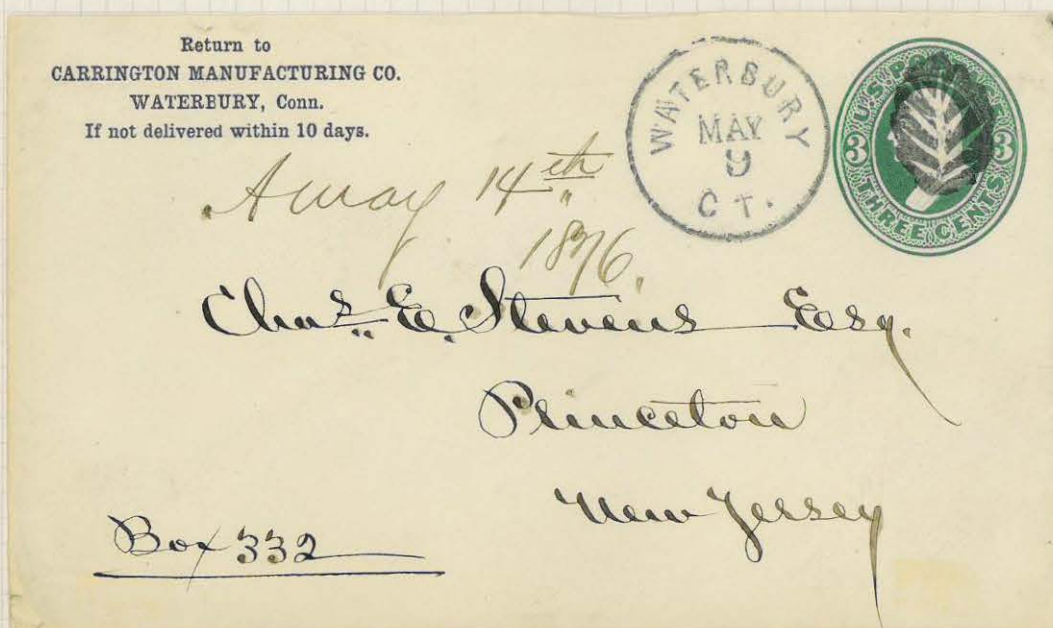


4/2/77-7/3/7?

Ten-Petaled Leaf, I

L-18, RRR





3/22/76-6/7/76

Small Veined Leaf

L-21, RR



10/27/81-11/2/81

Stylized Leaf, Eight Segments, I

L-25, RRR

The Waterbury duplexed cds and leaf obliterator is here used as a forwarding marking.



# Hearts



Heart with Arrow to Right  
2/14/70? to 2/14/71  
J-5, RRRR



Heart with Arrow to Left, II  
2/14/187?  
J-4, RRRR



Circle of 5 Hearts Enclosing a Star  
3/7/65-10/22/67  
J-10, RRR



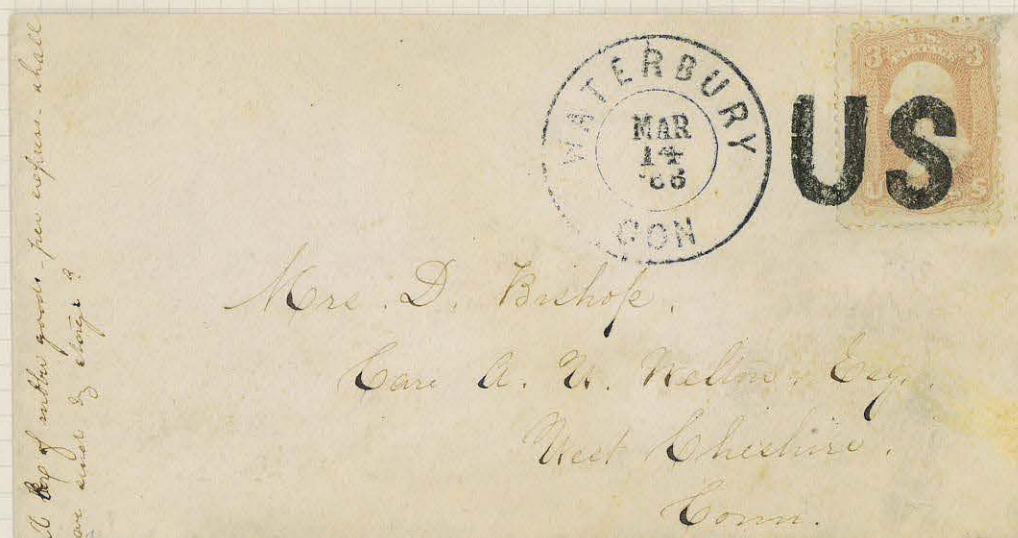
2/14/79-3/18/8?

Four Hearts Pointing Inward, II

J-7, RR



*Names and Words*



2/5/66-3/19/66

"US"

M-3, RR



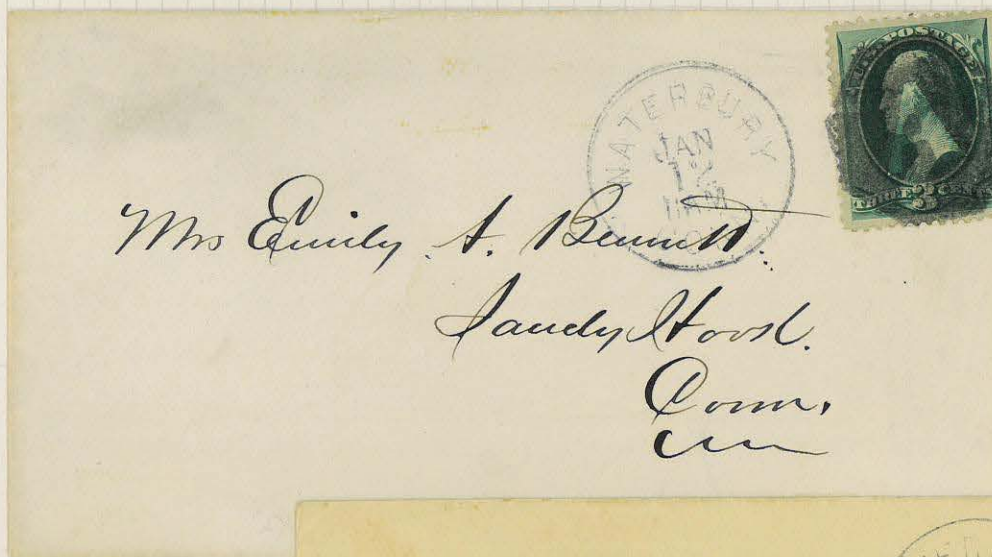




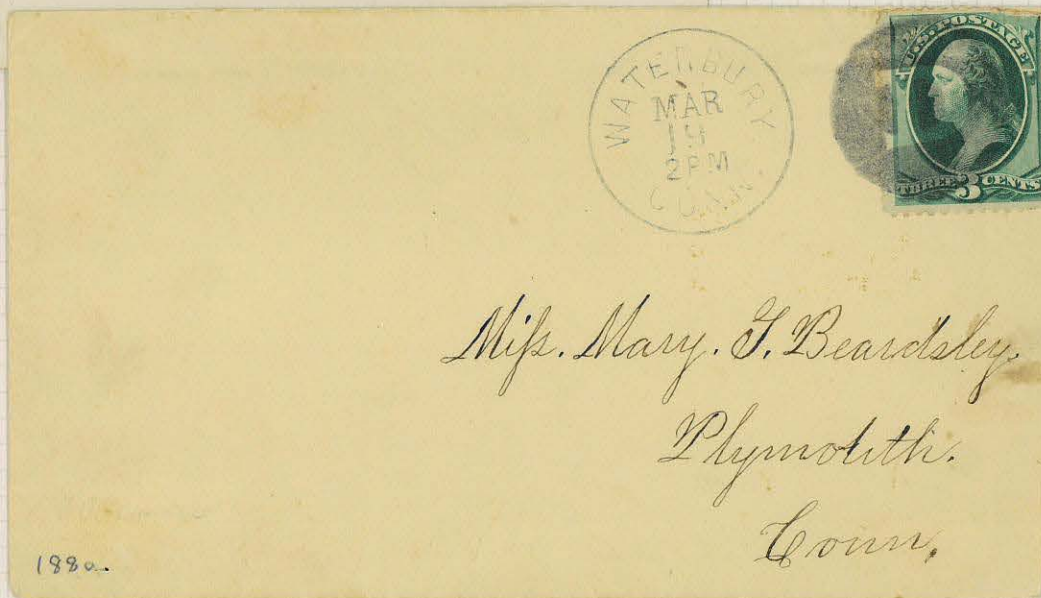
Initials (Letters)



Initial "A", II  
1866  
K-2, RRR



Negative "A" in Octagon  
12/31/79-1/23/80  
K-4, R



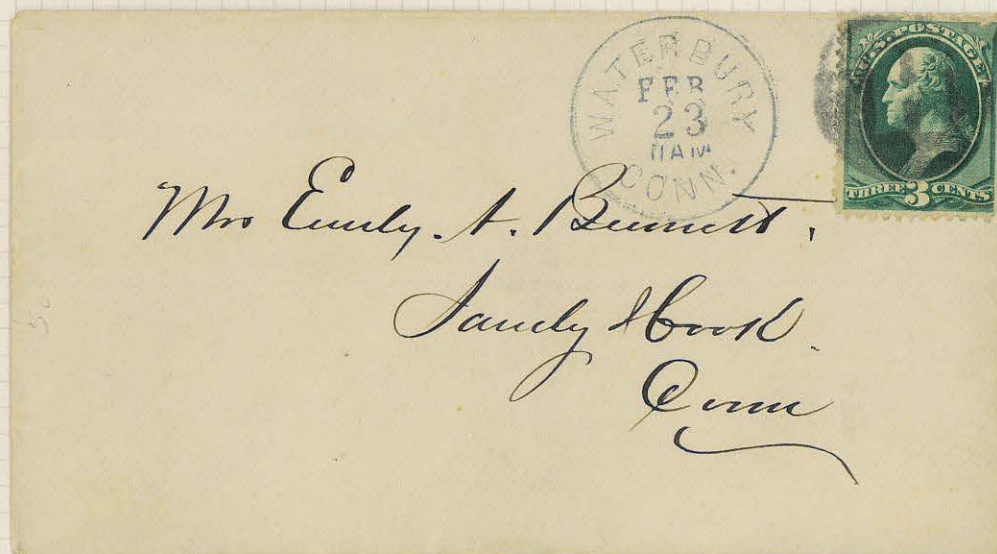
Negative "D" in Circle  
3/19/80-4/20/84  
K-5, R



*Initials (Letters)*



Initial "G", I  
9/4/66-9/8/66  
K-7, RR



2/23/7?-3/5/80(?)

Negative "H" in Circle  
Believed to have been cut in honor of President R. B. Hayes

K-11, RR



Numerals



12/3/79-12/8/79

Negative "7" in Circle

N-3, RR



6/8/76-6/12/76

"100" - Centennial Cancel, 1776 - 1876

N-5, RRR





1865

Rosette, Seven Segments, I

P-5, RR



10/8/65-3/1/70

Rosette, Seven Segments, II

P-6, R



Rosettes



1870-1872(?)

Rosette, Eight Segments, II

P-11, R



3/5/69-12/15/71

Rosette, Eight Segments, V

P-14, RRR



# Rosettes



Rosette, Eight Segments, VIII  
6/27/68-8/11/68  
P-17, RRR



Rosette, Six Segments, I  
1872  
P-1, RR



Rosette, Eight Segments, V  
1869  
P-14, RRR



5/4/



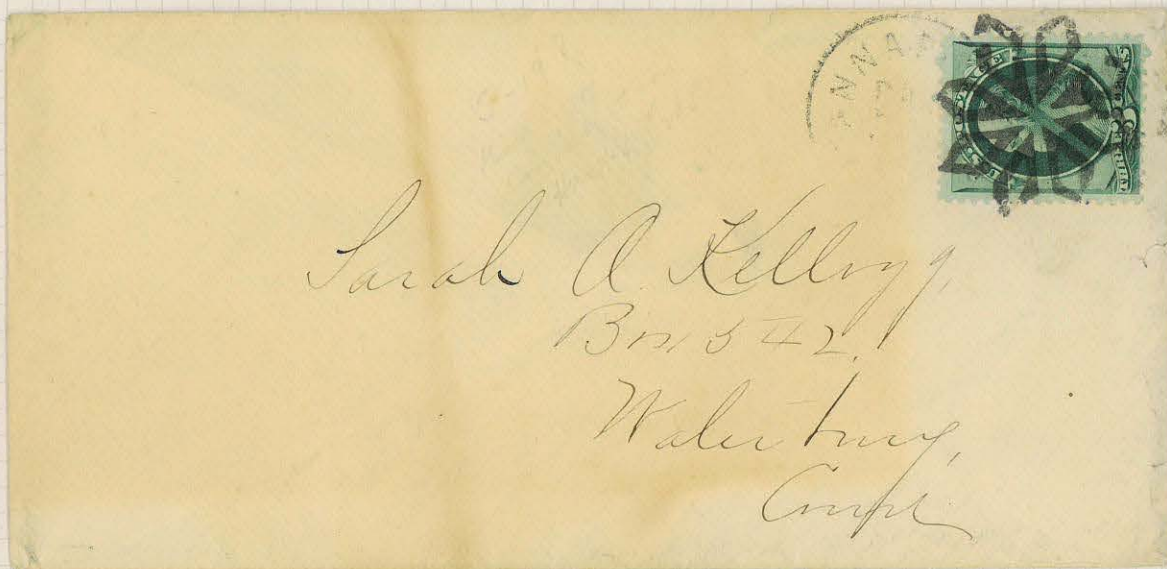
Rosettes



5/29/77-6/11/77(?)

Rosette, Eight Hollow Segments, II

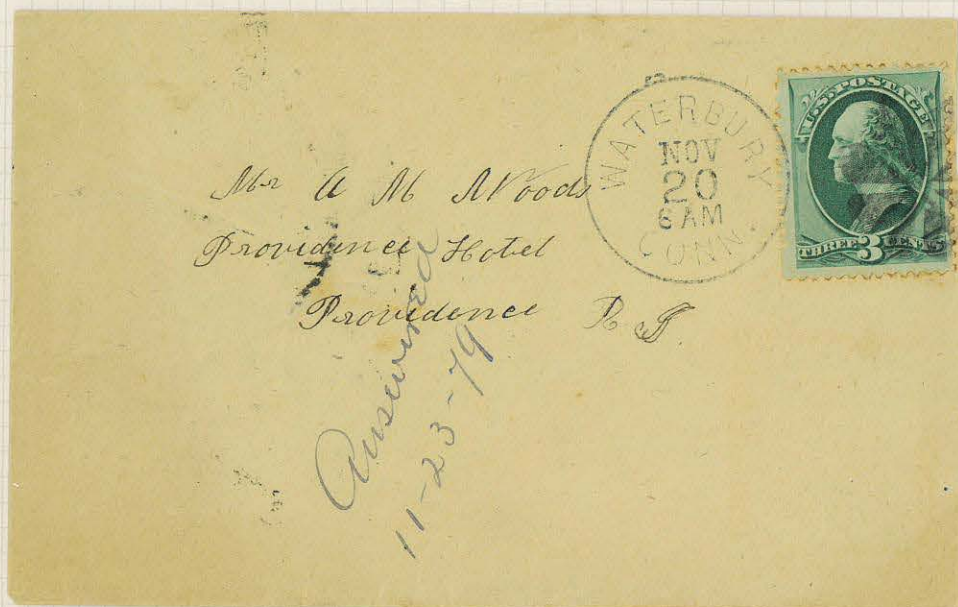
P-26, RRR



The same cancellation used on incoming mail by a Waterbury postal clerk who thought the 3c bank note was too lightly cancelled,



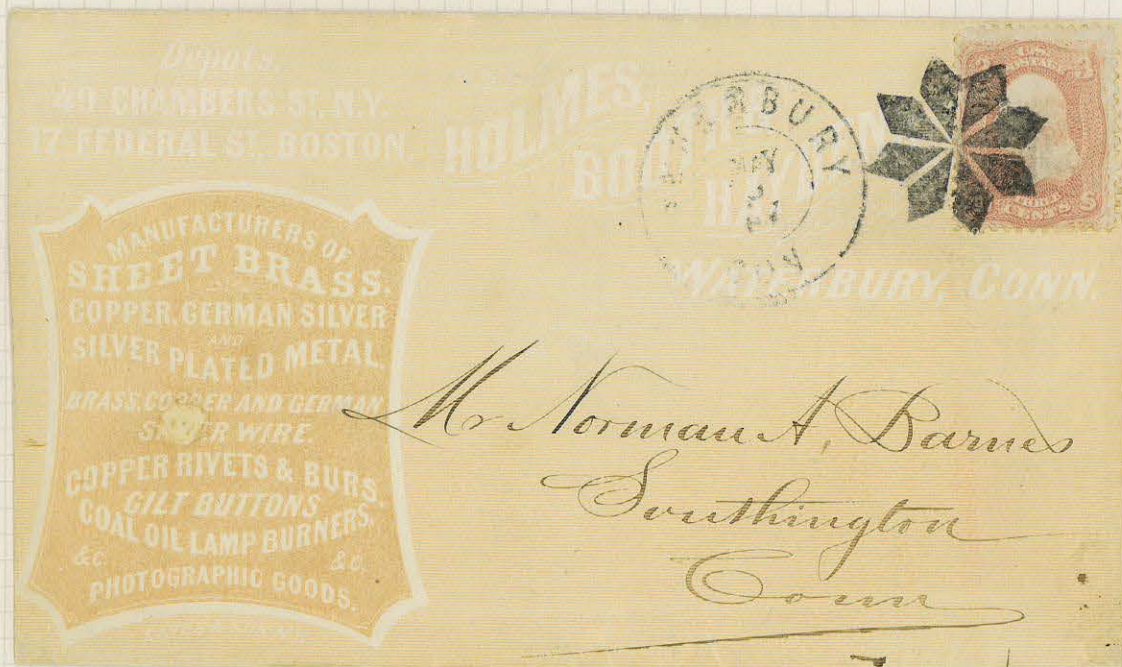
Rosettes



11/20/79-3/9/82

Rosette, Eight Segments, X

P-19, R



11/1/65-7/3/67

Rosette, Eight Segments, VI

P-15, RRR





6/14/67-6/22/67

Rosette, Twelve Segments, II

P-31, RRR



2/11/68-9/10/69

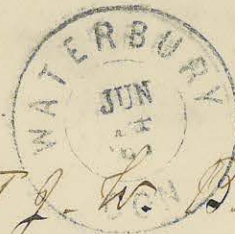
Rosette, Ten Segments

P-28, RRR





John S. Elmendorf Esq.  
138 E. Fortieth St.  
For Mallie New York



1st Lieut. J. W. Bebb  
30th U. S. Infantry  
Fort Sedgewick  
Colorado Ter.



Henry Johnson  
West Meriden  
Conn.



Shields



4/25/68-5/9/68

Shield, Eight Bars, Open Top

Q-4, RRR



3/18/78-3/27/78

Shield, Five Bars, Solid Top, II

Q-7, RRR

Shield, 6 Enclosed Bars, II  
6/22/67-8/3/67  
Q-10, RRR

Shield, 7 Bars, Closed Top  
3/17/66-4/5/66  
Q-3, RRR

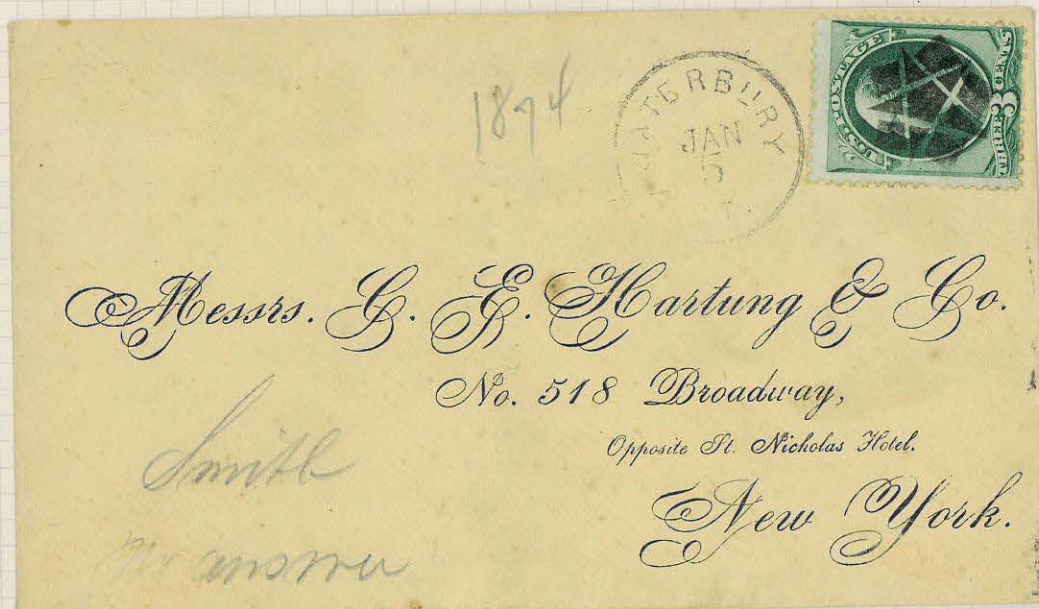




8/15/71

Five-Point Star

S-1, RRR

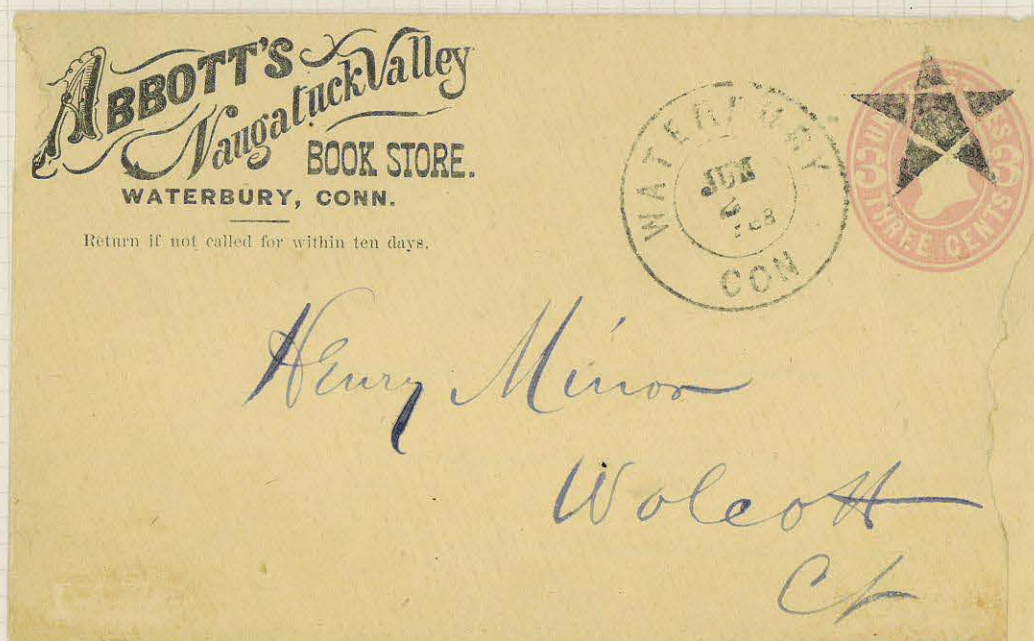


12/29/73-1/10/74

Negative Star with Five Diamonds

S-7, RRR





5/16/68-6/10/68

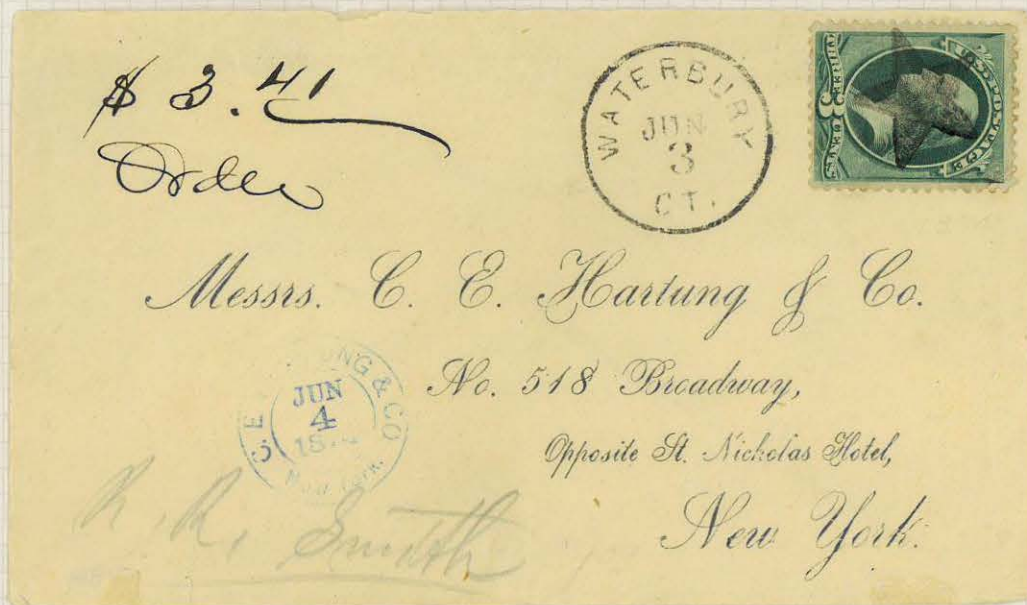
Five-Point Star, III

S-3, RRRR



Stars Not in "Rohloff"

Hollow Five-Point Star Containing a Pentagon, used Sep. 30, 1865  
 The date of use suggests that this was carved immediately after the "Star Within a Star", (S-6).  
 It is probably equally rare (RRR)



Solid Five-Point Star, used June 3, 1874  
 Probably a stock design not carved by John Hill.





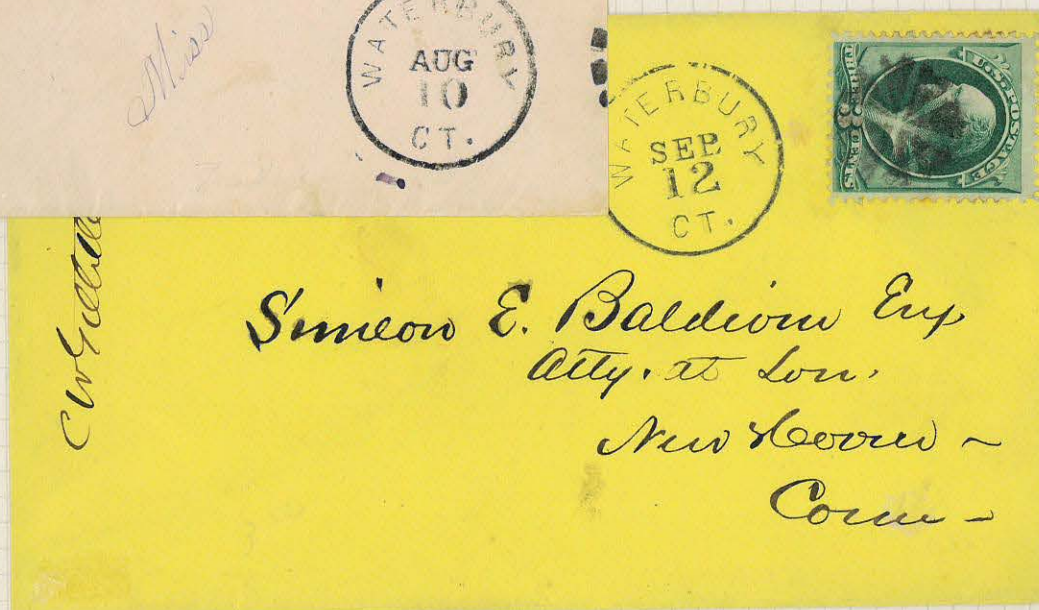
71



Four Segments, II; 1874-1878  
B-2, RR



Six Segments, 8/21/74-8/10/8?  
B-7, RRR



Eight Segments, I., 9/16/77-10/5/74  
B-9, RR



Arrowheads



10/11/69-6/19/7?

Eight Segments, VIII

B-16, RRR



4/14/7?-10/11/7?

Eight Segments, VIII



Arrowheads



9/7/74-9/20/74

Eight Segments, X

B-18, RRR

10/14/72-4/9/77

Eight Segments, III

B-11, R



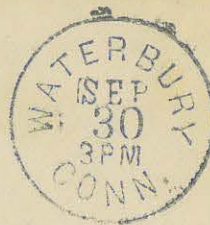
10/30/74

Arrowheads and Diamonds

B-19, RRR



Return to  
BENEDICT & BURNHAM MFG. CO.,  
WATERBURY, New Haven Co., Conn.,  
If not delivered within 10 days.



*Chas. J. De-  
Harrington  
Conn.*

9/16/88-9/30/88

Four Hollow Segments

C-2, RR



5/8/7?-8/12/77(?)

Double Segments, 1

C-6, RR

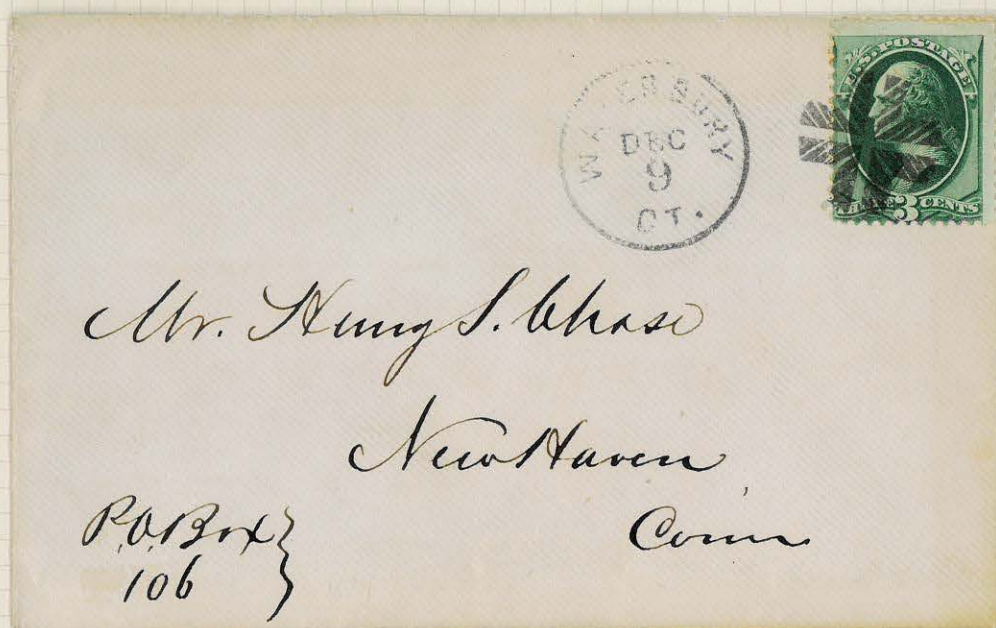




9/23/77(?) - 12/6/80(?)

Double Segments, V  
DUE / 3 because double-weight letter.

C-9, RR



12/9/74 - 12/10/74

With Diagonal White Lines

C-10, RRRR



# Crossroads

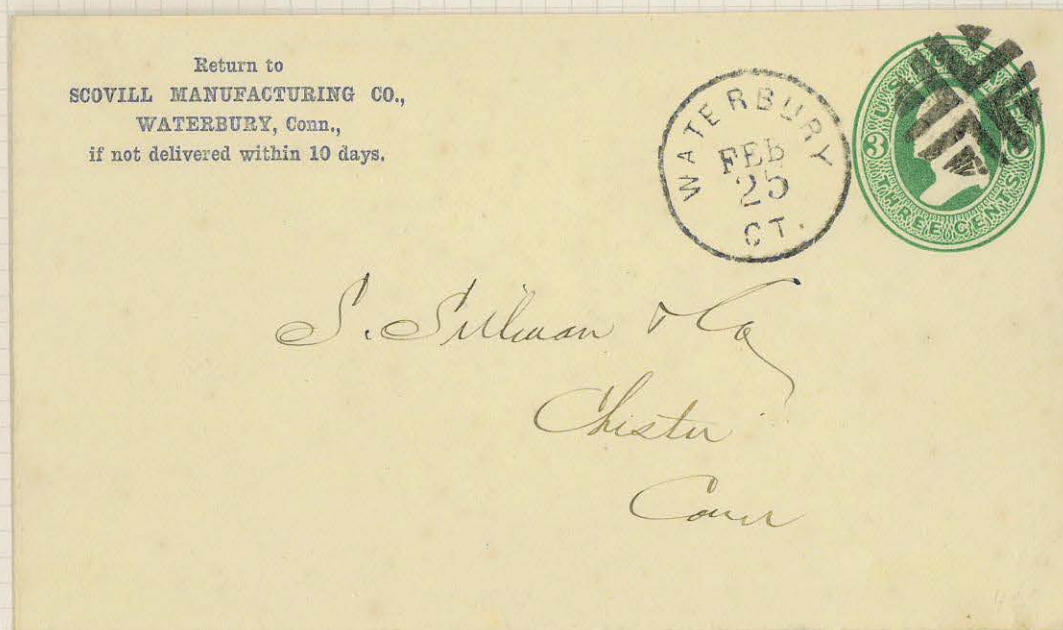


9/6/73-9/24/78

Double Segments, III

C-7, RR

The postal clerk noted that the strike of the 'crossroads' was too light and cancelled the stamp again: this time with the type XIV rosette.

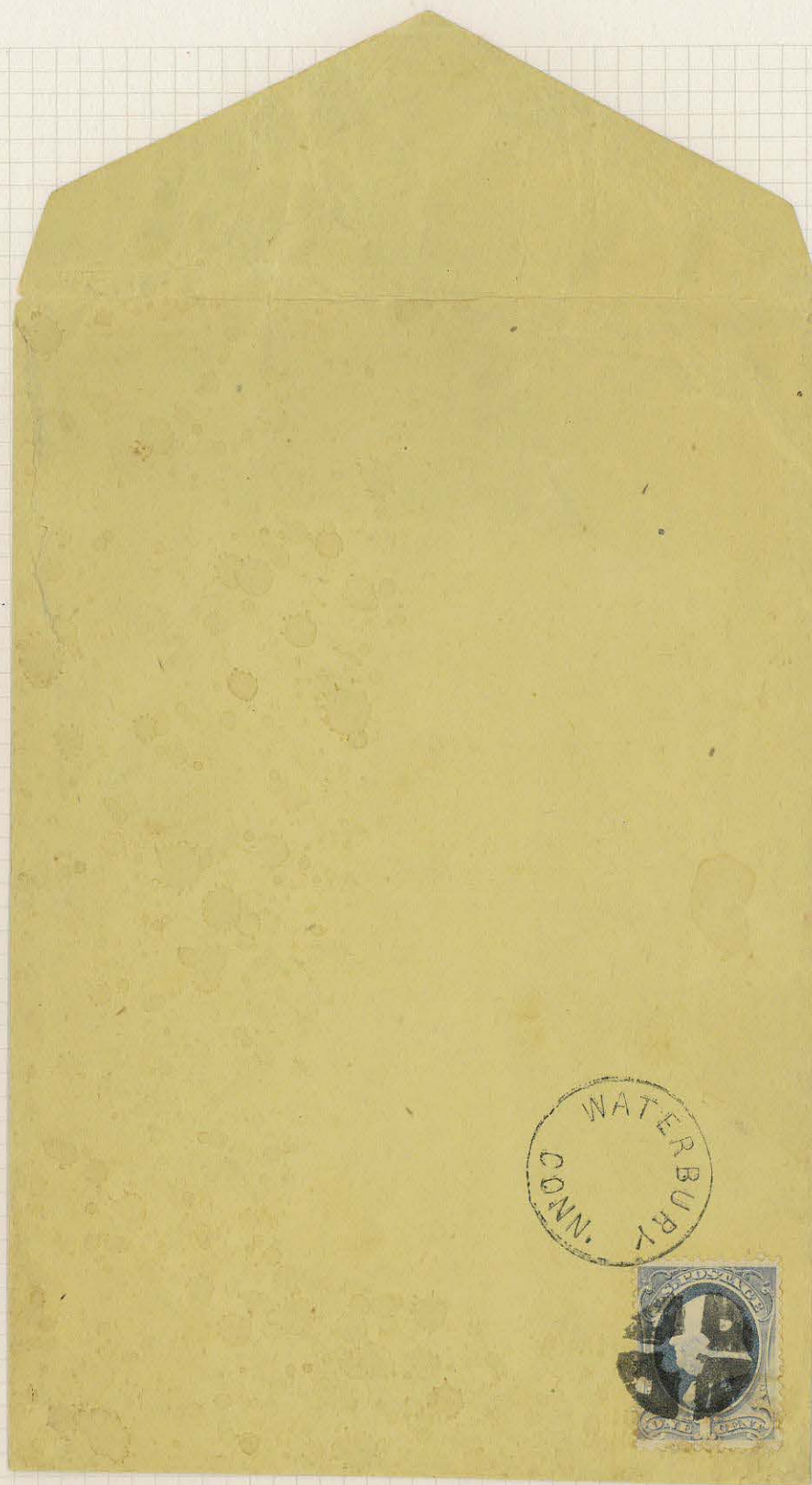


2/25/74-4/18/74

Double Segments, IV

C-8, RRR





*Unlisted in Rohloff. Similar to type C-4 but with negative circles in each segment.  
The 1c Re-engraved stamp of 1881 and the style of the townmark define the use as between 1881 and 1885.  
A date was not required on circular mail;  
the absence of an address indicates that the circular was "dropped" into every post office box.*



If not called for in TEN DAYS return to

EARLE HOTEL,

WATERBURY, CONN.

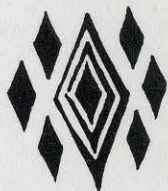
Wm. M. YALE, Proprietor

Livery, Feed and Exchange Stalls attached.



Brown, Tarbell & Co  
35 Pinckney St  
Boston  
Mass

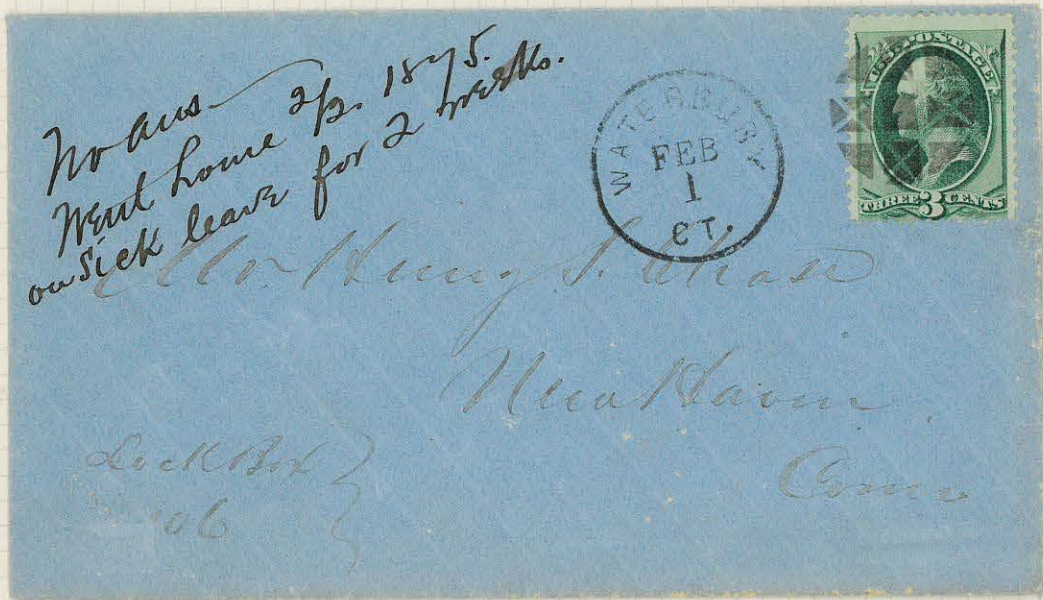
(Room 12)



D-21

Charles B. Dutton  
196 Chatham Square  
New York





1/29/75-2/8/75

Garden Paths, I

D-1, RRR



7



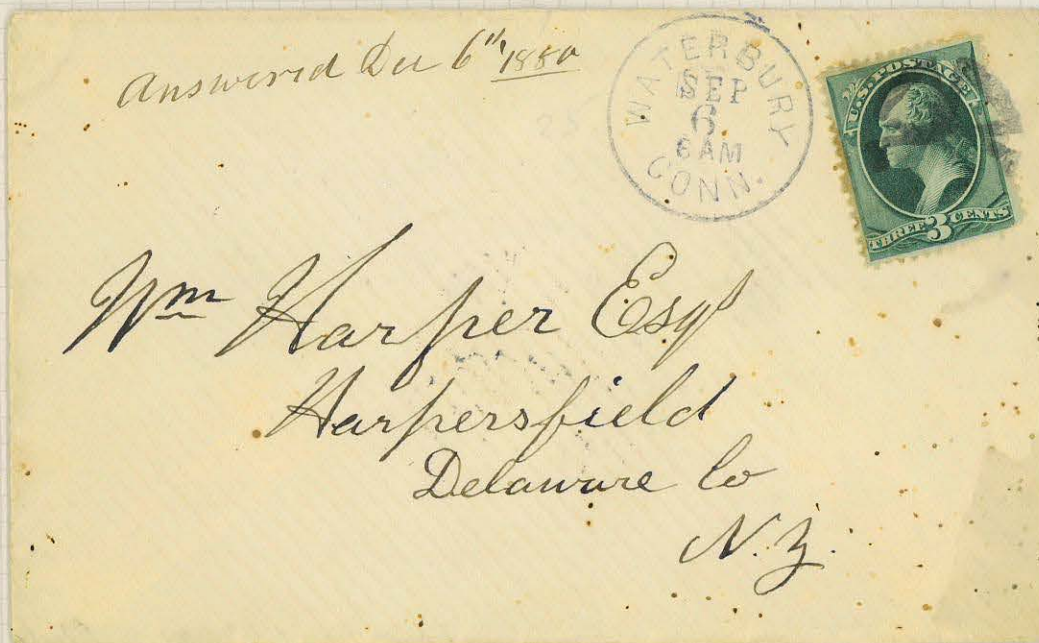
Designs -- Geometrics, Patterns, Targets



4/17/77

Garden Paths, V

D-5, RRR

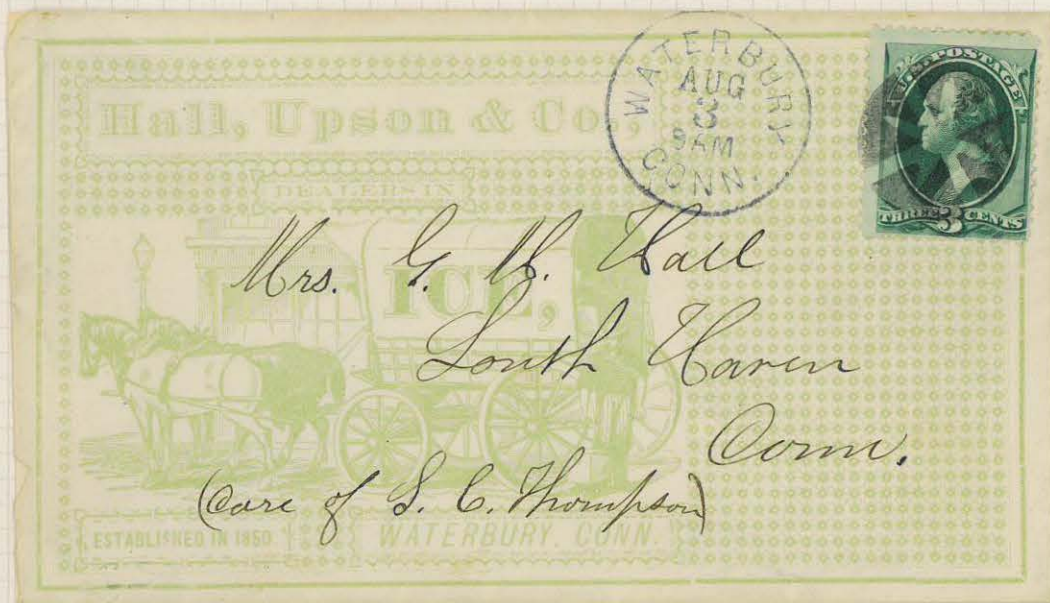


7/23/80-9/6/80

Four Open Triangles

D-8, RRR





7/23/80-8/12/80

Circle of Four Wedges with White Cross

D-9, RRR



3/31/187?

Sunburst, I

D-11, RRR



Return to ROGERS & BROTHER,  
Manufacturers of Silver Plated Goods,  
WATERBURY, Conn.,  
if not delivered within 10 days.

*D. B. Hamilton*  
*June 18. 1868*  
*and June 22. 1868.*

*Alma Dearborn's Copy*  
*Waterbury Conn.*



6/19/68-7/14/68

Eight Diamonds Enclosed in a Circle of Sixteen Triangles

D-20, RRR

PAPER STOCK DEALERS,  
Waterbury, - - - Conn.

*Mr. Horace Cook*  
*Bridge*  
*Nov 18*



5/4/75-5/15/75

Emblem Design

D-25, RRR





2/23/75-3/1/75

Circular Grid, 1A

H<sub>1</sub>A, RR



10/17/74-5/26/75

Circular Grid, V

H-5, RR





1/18/74-12/1/77

Circular Grid, VII

H-7, RRR



2/17/77-3/26/77

Circular Grid, IX

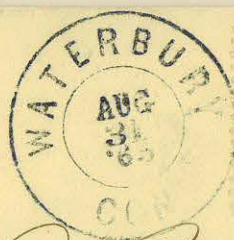
H-9, RRR



*Ans. March 21. 1878.*



*Mr. Henry L. Chase  
New Haven*



*Miss Fela D. Bradley  
Care Abijah Bradley Esq  
Hovester St.  
Ch. N.*

Oval Grid, II  
3/12/77-4/20/75  
H-11, RRR

Oval Grid, VII  
8/31/65-6/25/69  
H-16, RRR



*Mr. Elijah B. Treat  
Symon*

*care of Morris Bros  
please forward*

*let.*

Oval Grid, VI

H-15, RR



# Grids and Grills



12/17/7?

Odd-Shaped Grill Enclosing Rectangle

H-23, RRR



8/24/68-9/9/68

Circular Grill, III

H-20, RRR



*Purchased Handstamps*

*A few of the cancellations seen on mail during John Hill's tenure in the Waterbury Post Office were purchased handstamps used in his absence.*



4/20/7?

Oval Grid, I

H-10, RR



9/12/89-10/6/90

Bull's Eye

D-22, R



## Postal Markings

### Forwarded Letters

Letters could be "forwarded" because the addressee was absent, temporarily or permanently, or because the postal services had misssent the letter.



Meriden, Conn, to Waterbury, forwarded to Southington, Conn.  
The additional stamp was not required for forwarding, but it was nonetheless cancelled with the Waterbury duplex with the large "W" with serifs at top.



New York to Northampton, Mass., missent to Waterbury, Conn.  
Forwarded to the correct address, with the notation "Missent and Forwarded",  
the date of forwarding being noted by the Waterbury duplex with the large "W" with serifs at top.