

POSTAGE

General Issues

Printed by Rawdon, Wright, Hatch & Edson
1847

Imperforate



Printed by Toppan, Carpenter, Casilear & Co.

1851-56

Imperforate



*Waterford NY
Blue
cancel*



red cancel

POSTAGE

Printed by Toppan, Carpenter & Co.
1857-61

Perforated 15



1 C
BLUE
Type Ia
(19)



1 C
BLUE
Type III
(21)



APEX
lost

POSTAGE

Printed by the National Bank Note Co.

1861

August First Issue "Premiere Gravure"

APK 09

Perforated 12

55 B
PF →
Cot.



4 PSE
Cot



Cot PF

1861-62

Second Issue



Wass
Cot



Hi Grade

PSE
Cot.



OG
Grade 98+
Wass Cot.
70b Steel Blue
PSE Cot.



78a. OG
Wass Cot.

POSTAGE

Printed by the National Bank Note Co.

1867

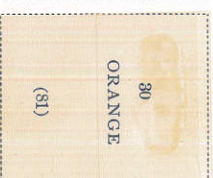
Same Designs as 1861-66 Issues
Embossed with Grills of Various Sizes

Grill with Points Up

A. Grill covering the entire stamp

B. Grill measuring
about 18x15 mm.

C. Grill measuring
about 13x16 mm.



Grill with Points Down

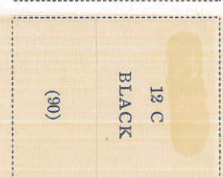
D. Grill measuring about 12x14 mm.



Z. Grill measuring about 11x14 mm.

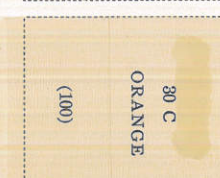
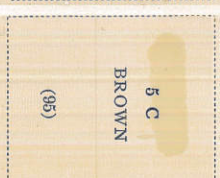


E. Grill measuring about 11x13 mm.



F. Grill measuring about 9x13 mm.

1867



POSTAGE

Government Imitations, Reprints and Re-Issues

1875

Imitations of Issue of 1847

Produced by the U. S. Bureau of Engraving and Printing.

Imperforate

PF
Cent.



1875

Reprints of Issue of 1857-60

Produced by the Continental Bank Note Co.

Perforated 12



1875

Re-Issue of Issue of 1861-66

Printed by the National Bank Note Co.

105
PF Cent



No. 01227710 9/22/2010**Professional Stamp Experts**
P.O. Box 6170, Newport Beach, CA 92658**Expert Committee**

We have examined the enclosed item submitted to PSE, of which an image is shown below, and are of the opinion that:

Cat No.	Issue	Denom.	Color
Scott 62B (USD 20)	1861	10c	Dark green

GRADE: VG 50, Used

"it is genuine used, with a red grid cancel, a pulled perf at the bottom left and a short perf at the upper left."



For The Expert Committee

THIS CERTIFICATE IS PRINTED ON WATERMARKED PAPER AND IS NOT VALID WITHOUT WATERMARK

Use the No. assigned here
when referring to the opinion
rendered by the Committee.

11499

MOUNT ONLY ONE STAMP, PAIR, BLOCK OR COVER IN THIS SPACE. MOUNT ITEM SO IT CAN BE EASILY REMOVED FOR EXAMINATION. A SMALL ACETATE OR GLASSINE ENVELOPE IS RECOMMENDED.

**AMERICAN
PHILATELIC SOCIETY****11499**

Members of The American Philatelic Expertization Service have examined the item submitted and it is their opinion that it is

Scott No. 56, unused, o.g.,
genuine in all respects.

(APS Authorized Signature)

(ASDA Authorized Signature)

Date JUN 20 1972

American Philatelic Society

Expert Committee Report

Members of the American Philatelic Expertizing Service have examined the item submitted and it is their opinion that it is:

United States, Scott No. 23, Type IV, Pos. 86L1L, Recut once at top and bottom, used, genuine, cleaned, cancel lightened, UL corner crease.



(APEX Authorized Signature)

(Administrator Signature)

No. **210295**Date: **12/22/2014****The American Philatelic Expertizing Service***A Service to Philately Since 1903*

100 Match Factory Place, Bellefonte, PA 16823 USA

Phone: 814-933-3803 • Fax: 814-933-6128

Website: www.stamps.org

A cooperative service offered by the American Philatelic Society (APS)
and the American Stamp Dealers Association (ASDA).

WEISS EXPERTIZING SERVICE
P.O. Box 5358
Bethlehem, PA 18015
(610) 691-6857

Opinion No. 3 6935 Date 07/28/14

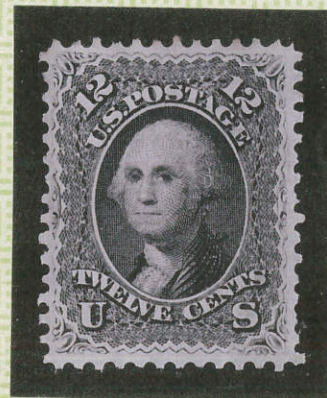
I have examined the enclosed United States 12c
1861 Unused (Scott #69)

for D. Britton

and my opinion is;

It is genuine, the OG is partly melted and few
short perfs.

A photograph is attached below.



Signed

W.R. Weiss Jr.

Member:

American Philatelic Society (Life Member)
United States Stamp Society, U.S. Philatelic Classics Society
U.S. Cancellation Club, U.S. Postal Stationery Society

Established 1972



No. 01257641

12/4/2012

Professional Stamp Experts
P.O. Box 6170, Newport Beach, CA 92658

Expert Committee

We have examined the enclosed item submitted to PSE, of which
an image is shown below, and are of the opinion that:

Cat No.	Issue	Denom.	Color
Scott 69-E6d	1861	12c	Black

GRADE: VF-XF 85, Mint NGAI

"it is genuine unused, no gum as issued."



Douphy

For The Expert Committee

THIS CERTIFICATE IS PRINTED ON WATERMARKED PAPER AND IS NOT VALID WITHOUT WATERMARK

THE PHILATELIC FOUNDATION

270 MADISON AVENUE
NEW YORK, N.Y. 10016

EXPERT COMMITTEE

No. 0113891
1/14/83

We have examined the enclosed item submitted by the
applicant described as follows:

Country: UNITED STATES OF AMERICA

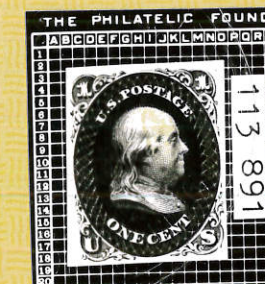
Cat. No.	Issue	Denom	Color
55P3	1861	1c	indigo

Scott's unless otherwise specified.

UNUSED
MOUNTED ON CARD

OF WHICH A PHOTOGRAPH IS ATTACHED AND
ARE OF THE OPINION THAT:

IT IS GENUINE * * * * *



Egy D. H.
For The Expert Committee
CO- Chairman

submitted by **MYRNA GOLDEN**

CUSTOMER COPY

WEISS EXPERTIZING SERVICE
P.O. Box 5358
Bethlehem, PA 18015
(610) 691-6857

Opinion No. 5 78a35 Date 07/28/14

I have examined the enclosed United States 24¢ 1862
Unused (Sc.#78a-gray lilac)

for D. Britton

and my opinion is;

It is genuine, OG/prev. hinged, 5mm gum loss at
top where hinge removed, otherwise sound.

A photograph is attached below.



Signed

Member:

American Philatelic Society (Life Member)
United States Stamp Society, U.S. Philatelic Classics Society
U.S. Cancellation Club, U.S. Postal Stationery Society

Established 1972

WEISS EXPERTIZING SERVICE
P.O. Box 5358
Bethlehem, PA 18015
(610) 691-6857

Opinion No. 4 7135 Date 07/28/14

I have examined the enclosed United States 30¢
1861 Unused (Scott #71)

for D. Britton

and my opinion is;

It is genuine, OG/prev. hinged, 5mm gum loss
at top from hinge removal, otherwise sound.

A photograph is attached below.



Signed

Member:

American Philatelic Society (Life Member)
United States Stamp Society, U.S. Philatelic Classics Society
U.S. Cancellation Club, U.S. Postal Stationery Society

Established 1972



No. 01268618

7/31/2013

Professional Stamp Experts
P.O. Box 6170, Newport Beach, CA 92658

Expert Committee

We have examined the enclosed item submitted to PSE, of which
an image is shown below, and are of the opinion that:

Cat No.	Issue	Denom.	Color
Scott 70b	1861	24c	Steel blue

"it is genuine used, with a red grid cancel and REPERFORATED at the
right."



For The Expert Committee

THIS CERTIFICATE IS PRINTED ON WATERMARKED PAPER AND IS NOT VALID WITHOUT WATERMARK