

1861 ESSAYS

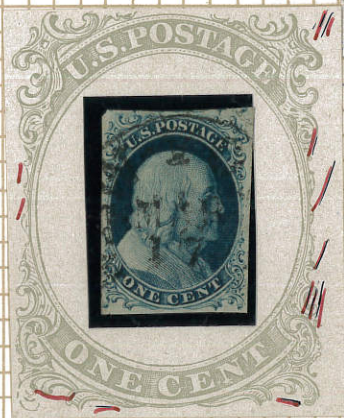
Toppa Carpenter & Co





1851

Type 11



97 R 3



65 R 2 DT

New York



47 R 2



48 DT

crack



49 DT

1851

Type 11



42-3 R 2

Stitch Water mark

BOSTON



68-79 R 2

PLATE 1 Late



85-6 R



17 L DT

NEW YORK



83
93 R

Boston Phil

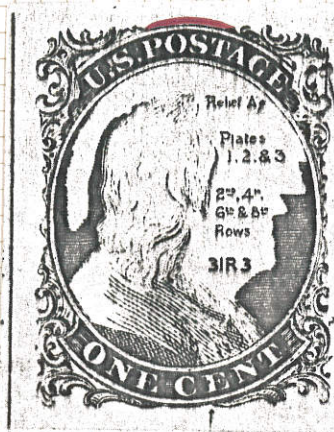


21 R

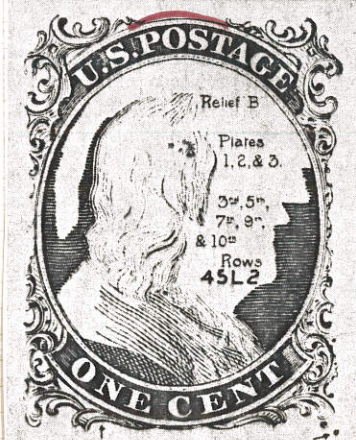
PLATE 1 Late



91 R



9



61 R

71

23

PLATE 1 Late

4R1L

Only Not Recut Position On Plate

Scarce Combination



2-3-4 R

IV

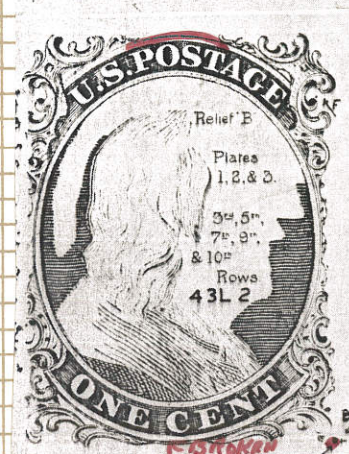
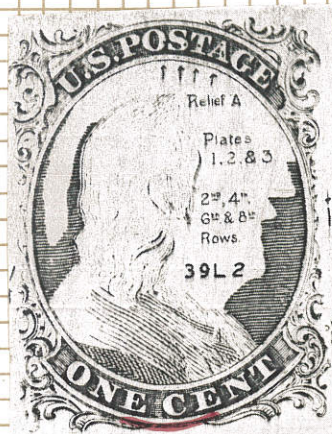
IV

II



9-9-7

PLATE 1 Late



79-89-90 R



72-3-4 R

INVERTED TRIPLE TRANSFER

71L1L



71

72 dt

73 dt

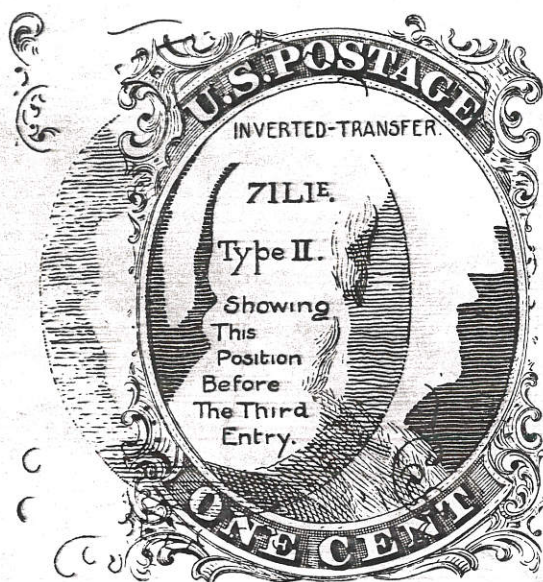


Fig. 12-A.



Fig. 12-B.

Fig.12-A illustrates 71L1E, and Fig.12-B 71L1L. The former, a Type II stamp, shows the two entries of reliefs—the original invert entry, and second, the fresh entry. 71L1L shows the altered state, the double recut lines at top, and the single recut line at bottom. Very little trace is shown in the illustration of the third entry of the relief as it was re-entered quite accurately.

MEMBER
AMERICAN PHILATELIC
SOCIETY No. 2497
COLLECTORS CLUB OF
NEW YORK
PACIFIC PHILATELIC SOCIETY
OF SAN FRANCISCO

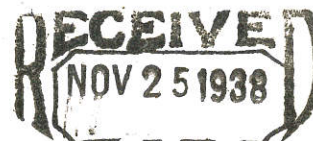
STANLEY B. ASHBROOK

64 ARCADIA DRIVE
FORT MITCHELL
434 S. GRAND AVE.
FORT THOMAS, KY. COVINGTON, KENTUCKY

FELLOW
ROYAL PHILATELIC
SOCIETY OF
LONDON

May 19th, 1937.

Mr. A. E. Smoll,
601 Fourth N.B. Bldg.,
Wichita, Kansas.



Dear Mr. Smoll:

I am returning herewith the various items contained in yours of the 13th. Illness has prevented me from replying sooner.

Your three covers I have numbered 1 - 2 - 3.

#1 - The 1¢ '51 is a Type IV from "Plate One Late." The plate position is 71 L 1 L, and it is not only a recut double at top but also one of the "Inverted transfers." See Scott U. S. Catalogue also my book on the U. S. 1¢ of 1851 - 1857.

There were only three "Inverts" on the plate viz., 71 - 81 - 91. Also there were only six Double recuts at top on the plate. Your copy is quite nice. The use looks like March 1860 but there is no apparent reason for a 4¢ rate. It is my opinion the postage was overpaid 1¢. The use - Mar. 1860 - is quite late for an imperforate stamp. No doubt this cover was originally mailed only with the 1¢ stamp on Mar. 19, 1860 - then returned to writer for insufficient postage and 3¢ was added instead of 2¢ additional - and then cancelled on "Mar. 21 - 1860". I can figure no other explanation.

Cover #2 - 1¢ '51 - Type IV - recut only at top - from the bottom row of the left pane of Plate One Late.

Cover #3 - 10¢ 1855 - Type II, from Plate #1 - used in Oct. 1857, to Canada. Very nice copy of this stamp.

I have made memos of the two single copies on the card.

The fee for the above examination is \$1.00.

Sincerely yours

Stanley B. Ashbrook

Encl -

Please preserve this letter and if #1 cover is sold it should follow the cover to the man who sold it. Sincerely, Ashbrook

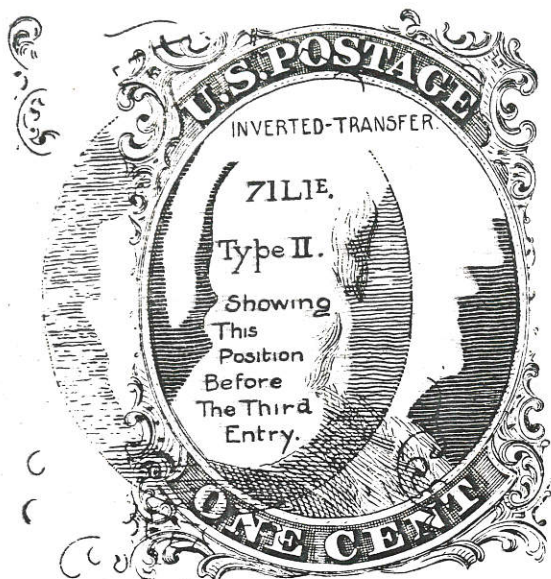


Fig. 12-A.



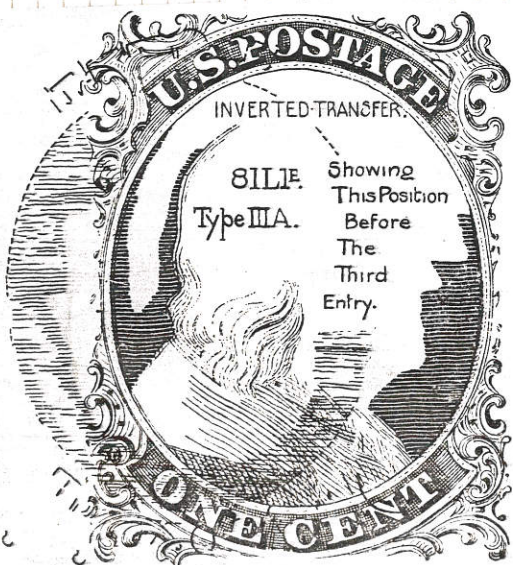
Fig. 12-B.

Fig.12-A illustrates 71L1E, and Fig.12-B 71L1L. The former, a Type II stamp, shows the two entries of reliefs—the original invert entry, and second, the fresh entry. 71L1L shows the altered state, the double recut lines at top, and the single recut line at bottom. Very little trace is shown in the illustration of the third entry of the relief as it was re-entered quite accurately.



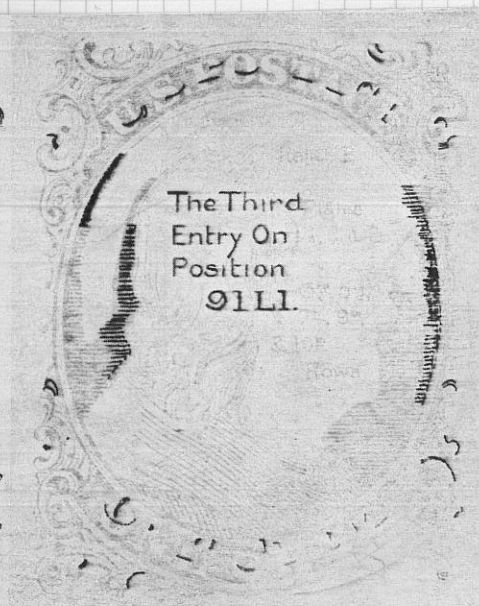
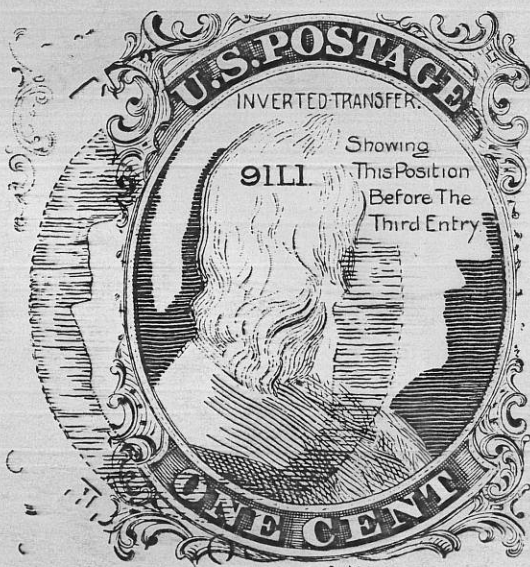
INVERTED TRIPLE TRANSFER

81 L1 L



INVERTED TRIPLE TRANSFER

91 L1 L



The Big Plate Two Flaw
Type II



The big Plate Two flaw. Positions 1-3 to 21-23L2.



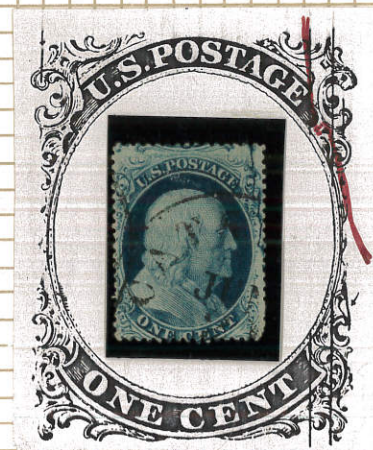
The Big Flaw



13 L 2 7



23 L 2 7
Early



12 L 2 20



23 L 2 20

PLATE 4



19 92 L T 1a



21 R T III



22 R T IIIa

PLATE 5



Baltimore

Drop Paid

3 R

Va

Type Va



65 R 5

Relief C

Curl over C

Relief D

75

Curl in head

Relief E

85

Damage on T

Identical Fig 22 a

Ashbrook

Page 262

1857

Type IIIa



PLATE 7



Imprint 41 L



Curl O 94 R



Curl shoulder 99 R

NEW YORK

THE INTERNATIONAL LIFE ASSURANCE CO.



*Trsd = L. Tuttle Esq
City Hall
N.Y.*

F Relief
6th Row
Plate 7?

GENERAL AGENTS' OFFICE,
71 Wall Street, New-York.

57L7

58-59L7
MAY 1858



*Rev. Thomas E. Vermilye
20 East 37th St
New York*

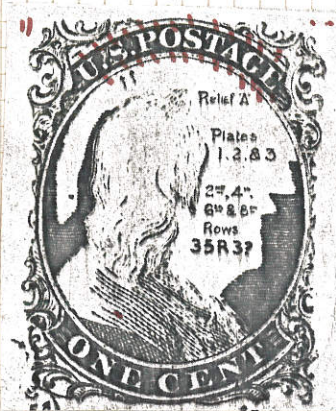
58-9L7

PLATE 8

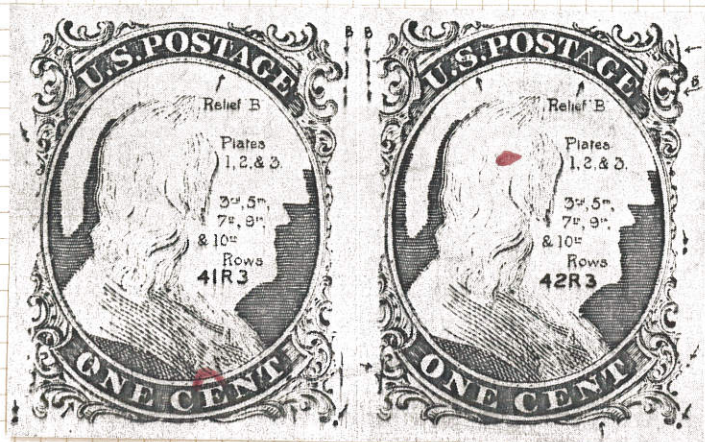
8 R



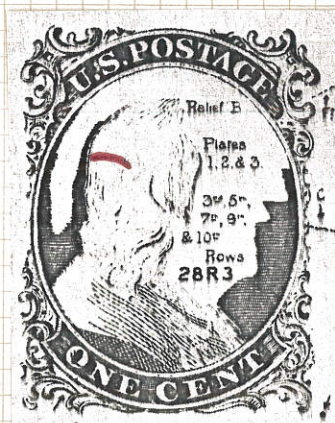
D/T



41-2 R



curl over
E dot in hair



36 L



dash in hair
1860

PLATE 8



52 R Curl in hair



10 R D/T



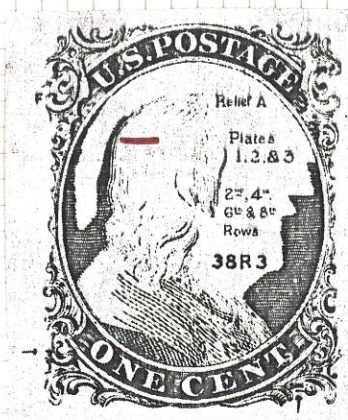
73 R Blister



61 L

MOBILA ALA

36 L 8



Dash In Hair



TYPE Va



Curl over E

PLATE 9



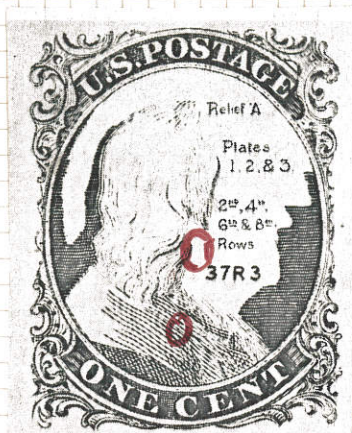
D/T 52 R



Dash 49 R

EARRING FLAW

10 L 9



Type I

July 25, 1861

10 L 9

Ladenhecher, Bros

Baltimore

Plate 10

Type V

81-2 R
91-2



85-98 R

Plate Eleven Triple Transfer

Type IIIa

1861

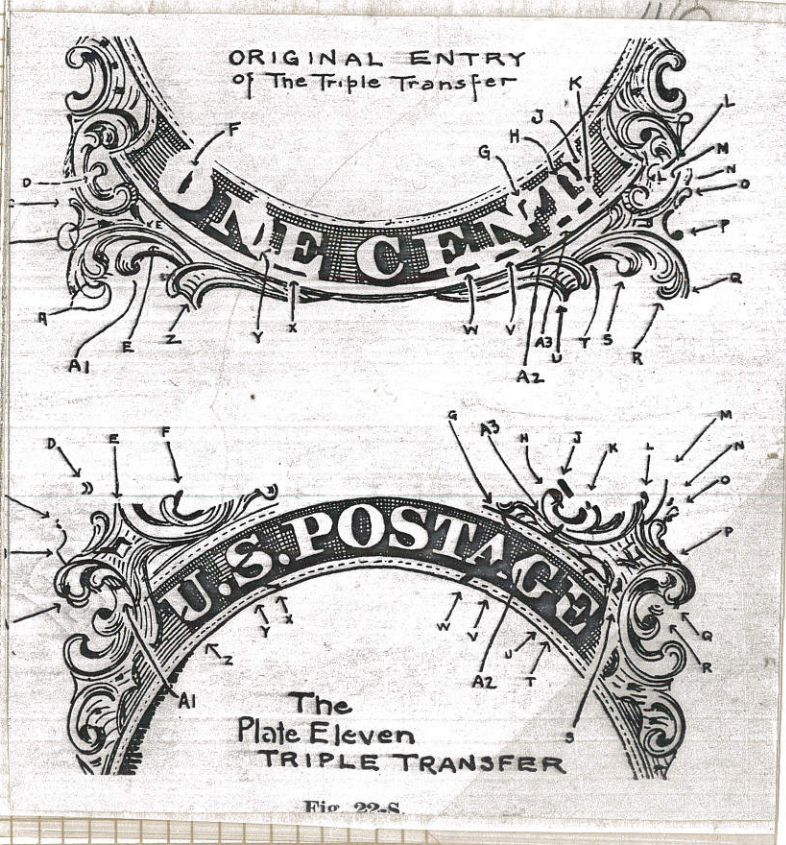


PLATE 12



Ty 1

18

UNITED STATES POSTAGE STAMPS

ISSUE OF

1857

ONE CENT

" PAID " Cancellations
on
Type V



Scott No. 24



C. Q. Vale
Richmond
Va.



Typo V

Jos: W B Mc Donald Esqr
Athens
Alabama.



Samuel Cilley,
Fairfax, Va.



Henry D. Bownley
Niagara Falls
N.Y.



PAID