

# UNITED STATES REVENUE ESSAYS

ENGRAVED AND PRINTED BY

THE AMERICAN BANK NOTE CO.

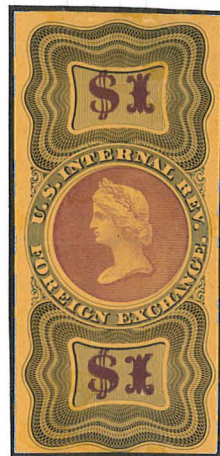
## DIE ESSAYS

"\$1 FOREIGN EXCHANGE"

WITHOUT WORD "CANCELED"

FRAME ENGRAVED ~ VIGNETTE AND "\$1" SURFACE PRINTED

BUFF  
TINTED



GLAZED  
PAPER

DARK BLUE

AND DEEP BROWN RED

MEDIUM WHITE WOVE PAPER



BLUE



BROWN



GREEN



DULL ORANGE

VIGNETTE IN PALE ROSE

# UNITED STATES REVENUE ESSAYS

ENGRAVED AND PRINTED BY

THE AMERICAN BANK NOTE CO.

## DIE ESSAYS

"\$1 FOREIGN EXCHANGE"

BLUE  
TINTED



GLAZED  
PAPER

RED AND ORANGE

WITHOUT THE WORD "CANCELED"

THE FRAME  
IS PRINTED  
FROM AN  
ENGRAVED  
DIE



BROWN RED AND DULL VIOLET  
GREEN PAPER

MEDIUM  
SURFACE  
TINTED  
GLAZED  
PAPER



ORANGE AND VIOLET  
BLUE PAPER

THE  
VIGNETTE  
AND "\$1"  
ARE SURFACE  
PRINTED



# UNITED STATES REVENUE ESSAYS

ENGRAVED AND PRINTED BY

THE AMERICAN BANK NOTE CO.

## DIE ESSAYS

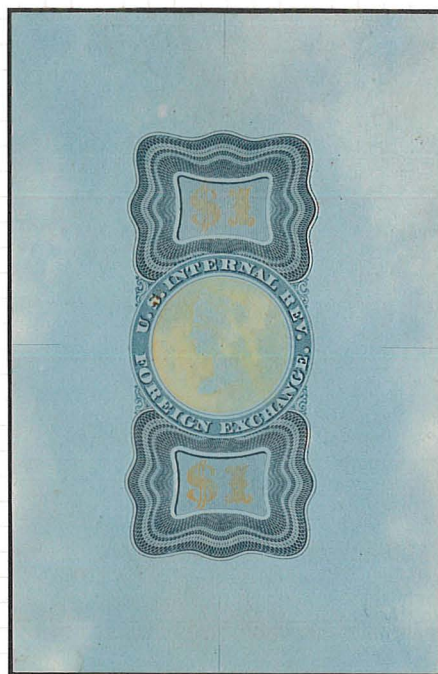
"\$1 FOREIGN EXCHANGE"

THE FRAME  
IS PRINTED  
FROM AN  
ENGRAVED DIE



RED AND YELLOW

MEDIUM  
FUGITIVE  
PAPER



BLUE AND YELLOW



RED AND DULL ORANGE

THE VIGNETTE  
AND "\$1"  
ARE SURFACE  
PRINTED



ORANGE AND BROWN

WITHOUT  
THE WORD  
"CANCELED"



# UNITED STATES REVENUE ESSAYS

ENGRAVED AND PRINTED BY

THE AMERICAN BANK NOTE CO.

## DIE ESSAYS

"FOREIGN EXCHANGE"

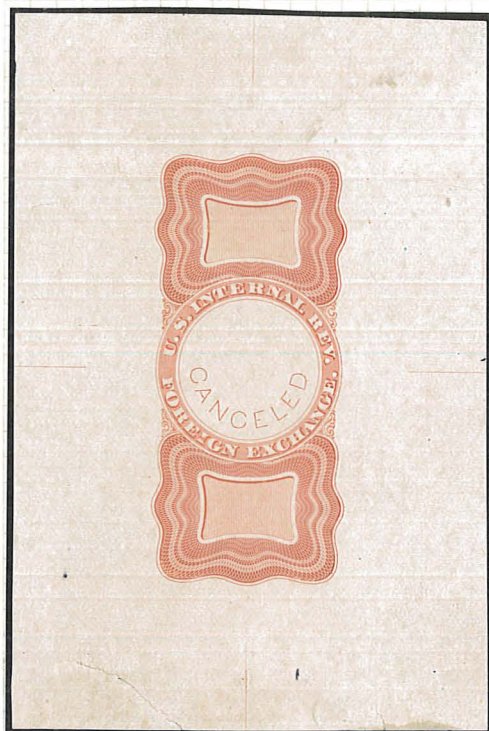
"CANCELED"

IN  
LARGE  
BLOCK  
LETTERS



ENGRAVED  
ON MEDIUM  
WHITE WOVE  
PAPER  
WHICH  
FLUORESCES  
BUFF

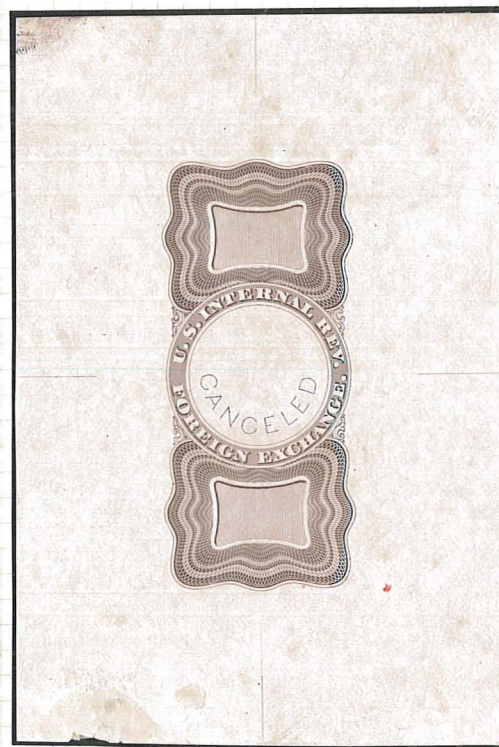
DEEP ROSE



VERTICAL  
GUIDE LINES  
AT TOP  
AND BOTTOM

HORIZONTAL  
GUIDE LINES  
AT RIGHT  
AND LEFT

RED



DULL PURPLE



# UNITED STATES REVENUE ESSAYS

ENGRAVED AND PRINTED BY

THE AMERICAN BANK NOTE CO.

## DIE ESSAYS

" \$1 FOREIGN EXCHANGE "

FRAME AND  
" CANCELED "  
ARE  
ENGRAVED



VIGNETTE  
AND " \$1 "  
ARE SURFACE  
PRINTED

ROSE CARMINE  
AND YELLOW

MEDIUM WHITE WOVE PAPER



DULL RED  
AND ROSE



RED AND  
VIOLET

" CANCELED "  
IN  
SMALL  
BLOCK  
LETTERS



GREEN  
AND ORANGE



PURPLE  
AND ORANGE

# UNITED STATES REVENUE ESSAYS

ENGRAVED AND PRINTED BY

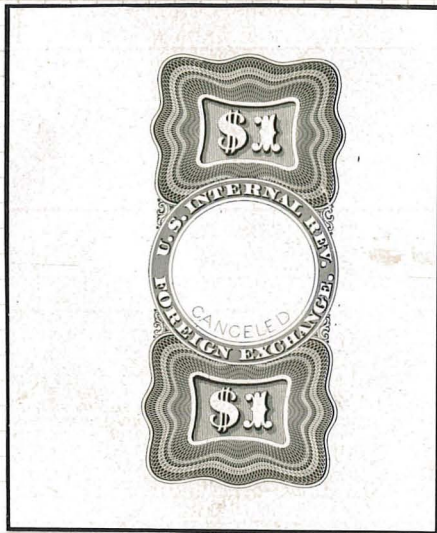
THE AMERICAN BANK NOTE CO.

## DIE ESSAYS

"\$1 FOREIGN EXCHANGE"

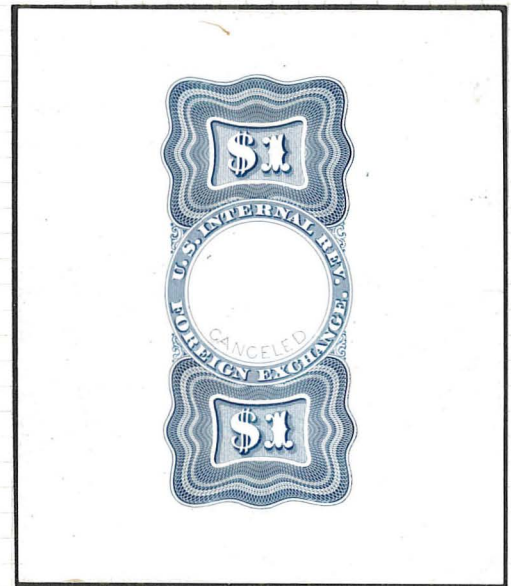
COLORLESS "\$1" AND SHADING ADDED

IN PANELS AT TOP AND BOTTOM

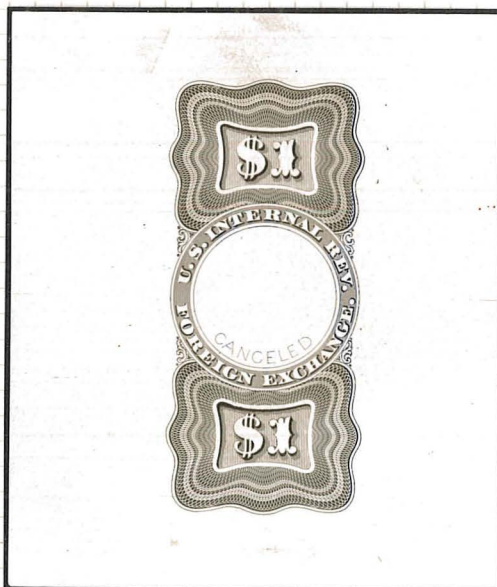


BLACK

ENGRAVED  
ON MEDIUM  
WHITE WOVE  
GLAZED  
PAPER  
WHICH  
FLUORESCES  
LIGHT PINK

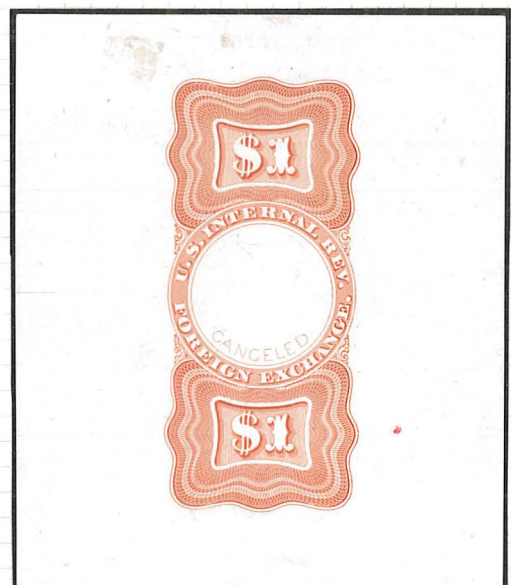


BLUE



BLACK BROWN

"CANCELED"  
IN  
SMALL  
BLOCK  
LETTERS



RED

220-



# UNITED STATES REVENUE ESSAYS

ENGRAVED AND PRINTED BY

THE AMERICAN BANK NOTE CO.

## DIE ESSAYS

" \$1 FOREIGN EXCHANGE "

COLORLESS " \$1 "   
 AND SHADING   
 ADDED   
 IN PANELS   
 AT TOP   
 AND BOTTOM



ENGRAVED,   
 ON   
 MEDIUM, BUFF   
 SURFACE PRINTED   
 GLAZED   
 PAPER

BROWN



BROWNISH RED

" CANCELED "   
 IN   
 SMALL   
 BLOCK   
 LETTERS



RED

THESE ALL FLUORESCCE BROWN

210-

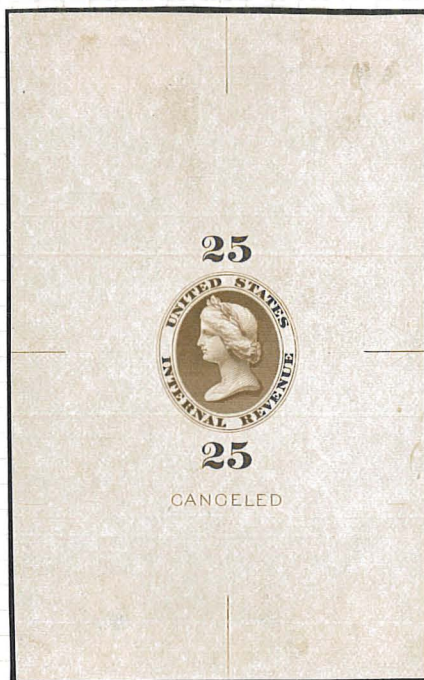
# UNITED STATES REVENUE ESSAYS

ENGRAVED AND PRINTED BY

THE AMERICAN BANK NOTE CO.

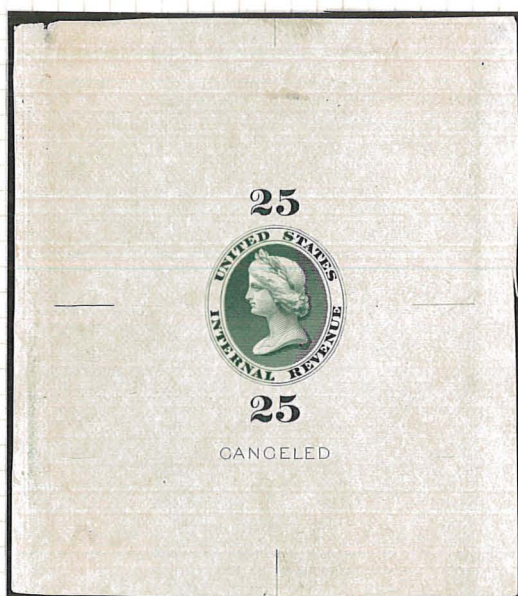
## DIE ESSAYS

WHITE  
GLAZED PAPER  
.003 - .004 INCH  
WHICH  
FLUORESCES  
LIGHT BUFF



GUIDE LINES,  
ON THE DIE  
ARE SEEN  
AT TOP,  
BOTTOM, RIGHT  
AND LEFT

BROWN



GREEN



BRIGHT RED



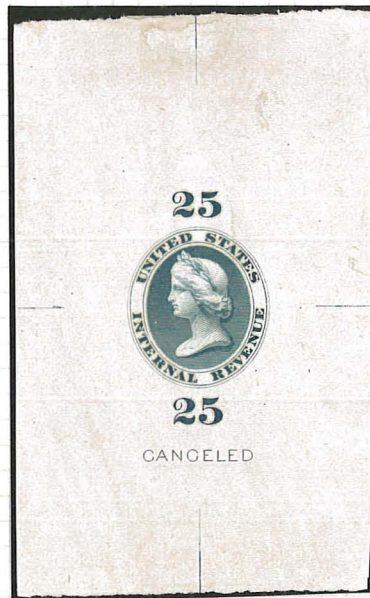
# UNITED STATES REVENUE ESSAYS

ENGRAVED AND PRINTED BY

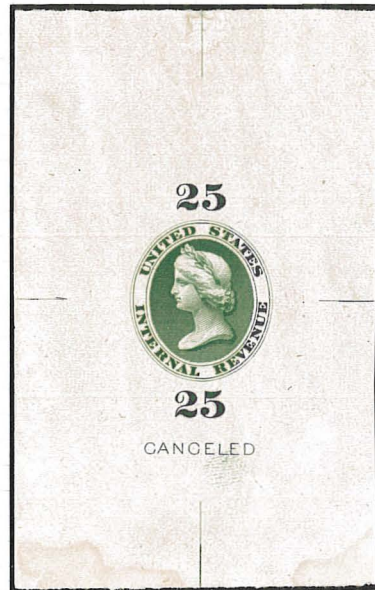
THE AMERICAN BANK NOTE CO.

## DIE ESSAYS

DULL  
BLUE

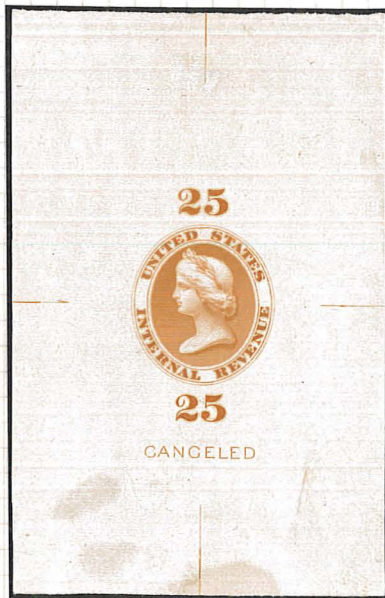


BRIGHT  
GREEN



WHITE GLAZED PAPER .003-.004 INCH THICK

WHICH FLUORESCES BUFF



DULL ORANGE



BRIGHT RED



BROWNISH YELLOW

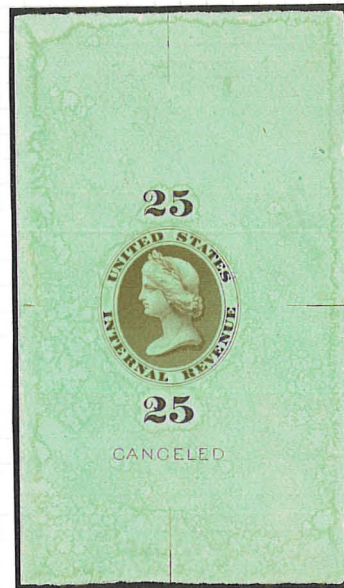
175

# UNITED STATES REVENUE ESSAYS

ENGRAVED AND PRINTED BY

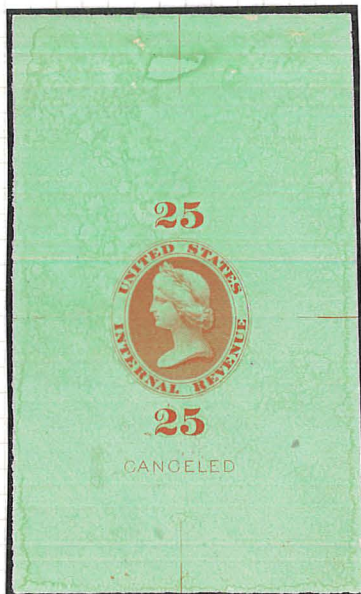
THE AMERICAN BANK NOTE CO.

## DIE ESSAYS

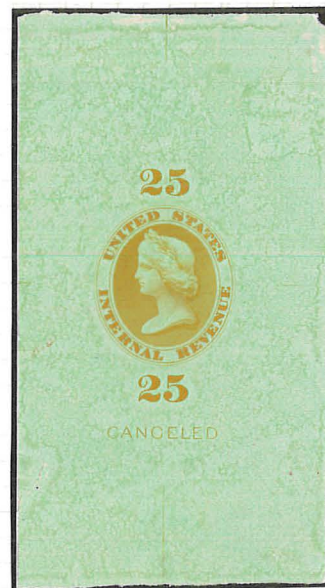


BROWN

GREEN SURFACE TINTED GLAZED PAPER



RED



YELLOW

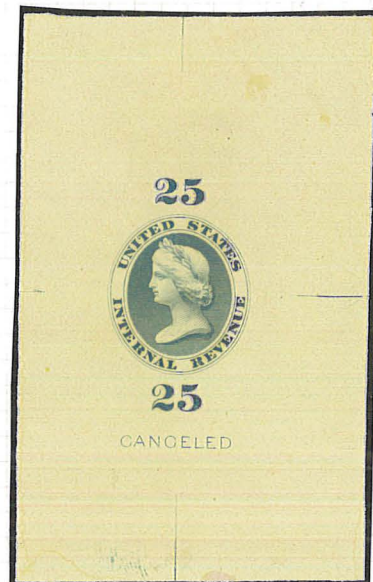


# UNITED STATES REVENUE ESSAYS

ENGRAVED AND PRINTED BY

THE AMERICAN BANK NOTE CO.

DIE ESSAY



BLUE

YELLOW SURFACE TINTED GLAZED PAPER

# UNITED STATES REVENUE ESSAYS

ENGRAVED AND PRINTED BY

THE AMERICAN BANK NOTE CO.

## DIE ESSAYS

COMPLETED DESIGN CONSISTING OF  
A SURFACE PRINTED FRAME AND AN ENGRAVED VIGNETTE



DULL  
ROSE  
FRAME



BROWN

ORANGE



ROSE  
FRAME



DEEP ROSE  
FRAME

DULL RED

BLUE



ROSE  
FRAME



BLUE  
VIGNETTE

THE SMEARED SPECIMENS SHOW THE EFFECT OF TAMPERING  
ON THE FUGITIVE INK OF THE FRAME

280



# UNITED STATES REVENUE ESSAYS

ENGRAVED AND PRINTED BY

THE AMERICAN BANK NOTE CO.

## DIE ESSAYS

COMPLETED DESIGN CONSISTING OF  
A SURFACE PRINTED FRAME AND AN ENGRAVED VIGNETTE



VIOLET AND GREEN

THIS FRAME IS RECTANGULAR WITH LATHWORK DIFFERING  
FROM THAT SHOWN ON PRECEDING PAGES

THE CENTRAL AREA OF FRAME  
CONSISTS OF THE FIGURE " 25 " REPEATED



LIGHT GREEN  
AND RED  
ON CARD



GREEN AND  
DULL RED



BRIGHT GREEN  
AND LIGHT RED



BRIGHT GREEN  
AND BROWN  
ON CARD

NOTE THE EFFECT OF TAMPERING ON THE FUGITIVE INK

# UNITED STATES REVENUE ESSAYS

ENGRAVED AND PRINTED BY

THE AMERICAN BANK NOTE CO.

## SAMPLES

ENGRAVED  
VIGNETTE  
MOUNTED



ON ENGRAVED  
LATHEWORK  
BACKGROUND

ORANGE FRAME

DARK BROWN VIGNETTE

VIGNETTE USED ON PRECEDING ESSAYS

THERE HAS BEEN  
ADDED A LINE  
FORMING AN OVAL  
AROUND THE  
VIGNETTE  
USED ON THE  
PRECEDING ESSAYS



DULL PURPLE FRAME

YELLOW VIGNETTE

THE  
SURFACE PRINTED  
FRAME IS SAME  
AS USED ON ESSAYS  
WITH FIGURE "25"  
REPEATED IN  
CENTRAL AREA



ORANGE FRAME

SLATE BLUE VIGNETTE



BROWN FRAME

BROWN RED VIGNETTE

THE COMPANY'S NAME REPLACES THE WORDS:

"UNITED STATES INTERNAL REVENUE"



# UNITED STATES REVENUE ESSAYS

ENGRAVED AND PRINTED BY

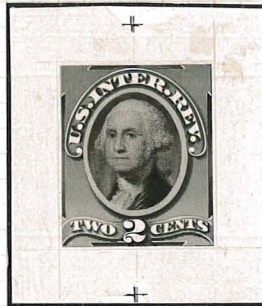
THE AMERICAN BANK NOTE CO.

## DIE ESSAYS

FOR A 2 CENTS STAMP

HEAD OF WASHINGTON PRINTED IN LINED OVAL  
BY A SECOND OPERATION

ALL  
HAVE BEEN  
CUT  
AROUND EDGES  
OF DESIGN



BLACK



BROWN

TO  
APPEAR  
AS  
IMPERFORATE  
STAMPS



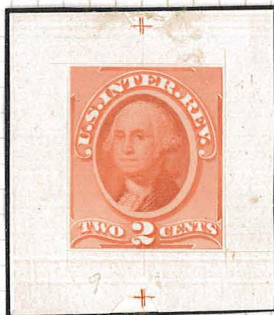
CARMINE



GREEN



ORANGE



DARK ORANGE



SCARLET



VIOLET

THIS PORTRAIT OF WASHINGTON  
WAS ALSO USED ON THE 10 ¢ AND 12 ¢ POSTAGE STAMPS OF 1861

# UNITED STATES REVENUE ESSAYS

ENGRAVED AND PRINTED BY

THE NATIONAL BANK NOTE CO.

## PLATE ESSAY

25 CENTS CERTIFICATE

COMPLETE DESIGN BEFORE RECUTTING

THE CIRCLES  
AT THE SIDES  
OF THE  
VIGNETTE  
HAVE NO  
ADDED LINES



UN-RECUT LEAF  
AT LEFT



BLACK

THE LEAVES  
AT THE ENDS OF  
" INTER-REVENUE "  
PANEL  
DO NOT HAVE  
VEINS ADDED



UN-RECUT LEAF  
AT RIGHT

AN INDIA PAPER IMPRESSION  
MOUNTED ON WHITE INDIA PAPER MOUNTED ON CARDBOARD  
TO APPEAR AS A DIE ESSAY

THE MATERIAL FOLLOWING INDICATES  
THESE ESSAYS WERE PRINTED IN A HORIZONTAL STRIP  
OF SIX SUBJECTS, AND AS EACH WAS RECUT DIFFERENTLY  
THERE WERE SIX DISTINCT VARIETIES



# UNITED STATES REVENUE ESSAYS

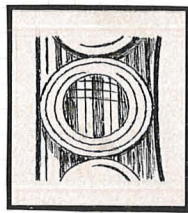
ENGRAVED AND PRINTED BY

THE NATIONAL BANK NOTE CO.

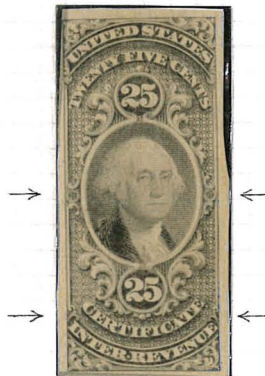
## PLATE ESSAY

25 CENTS CERTIFICATE

POSITION NO. 1

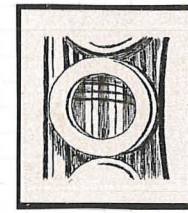


CIRCLE AT LEFT  
WITH ADDED LINES



BLACK

TISSUE PAPER



CIRCLE AT LEFT  
AS ON THE DIE

AN ADDITIONAL LINE HAS BEEN CUT  
WITHIN THE OUTER VERTICAL FRAME LINES

EXTRA LINES HAVE BEEN ADDED  
TO THE CIRCLES AT THE SIDES OF THE VIGNETTE  
AS SHOWN BY THE SKETCHES ABOVE  
AND NO OTHER ONE OF THE SIX SUBJECTS HAD THIS DONE  
THE LEAVES AT THE ENDS OF THE "INTER-REVENUE" PANEL  
HAVE HAD VEINS ADDED AS SHOWN BY THE SKETCHES

RECUT LEAF  
AT LEFT



RECUT LEAF  
AT RIGHT

# UNITED STATES REVENUE ESSAYS

ENGRAVED AND PRINTED BY

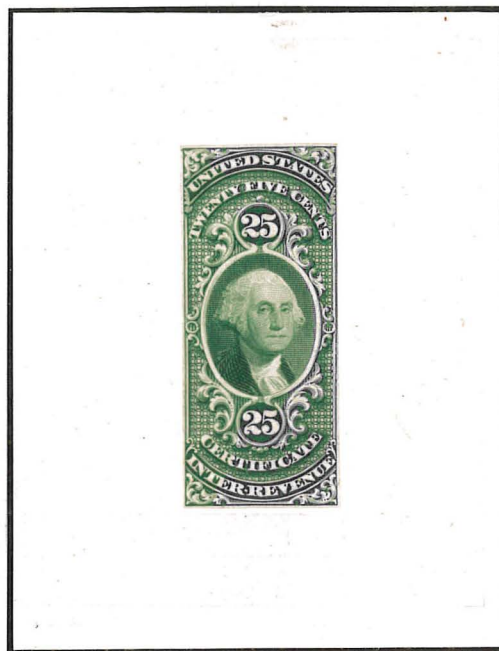
THE NATIONAL BANK NOTE CO.

## PLATE ESSAYS

25 CENTS CERTIFICATE

POSITION NO. 3

THE EXTRA  
VERTICAL LINES  
WITHIN THE  
OUTER  
FRAME LINES  
ARE IDENTICAL  
TO POSITION NO. 1.



THE LEAVES  
ARE WITHOUT  
THE VEINS  
BEING  
ADDED AS  
IN OTHER  
POSITIONS

GREEN

MOUNTED ON INDIA PAPER ON CARDBOARD



# UNITED STATES REVENUE ESSAYS

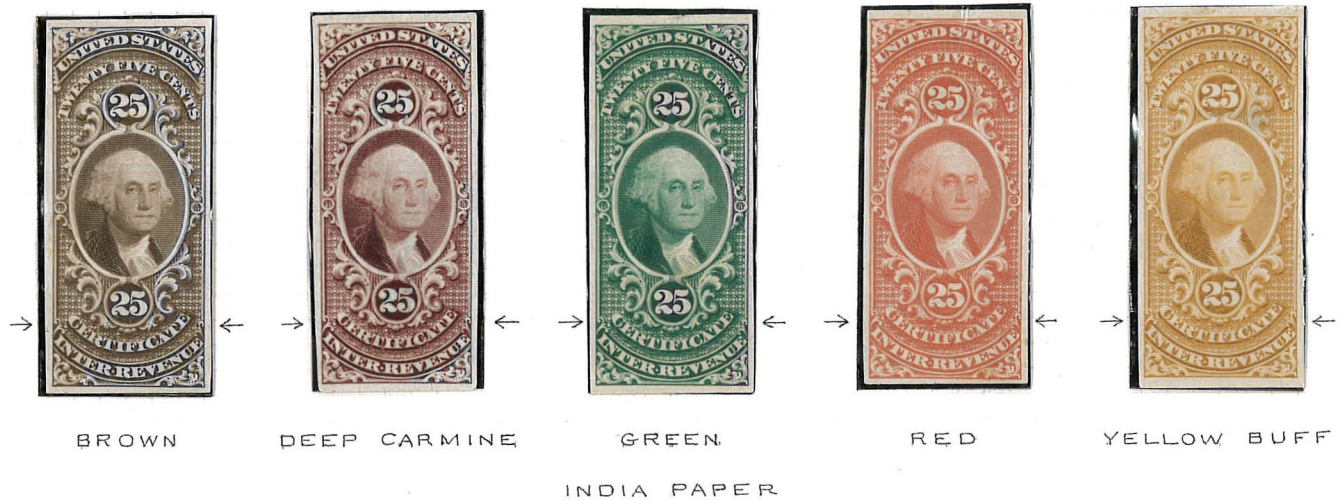
ENGRAVED AND PRINTED BY

THE NATIONAL BANK NOTE CO.

## PLATE ESSAYS

25 CENTS CERTIFICATE

POSITION NO. 4



THE EXTRA VERTICAL LINES WITHIN THE OUTER FRAME LINES.

ARE IDENTICAL TO POSITION NO. 1

ONLY THE RIGHT LEAF.

AT THE END OF THE "INTER REVENUE" PANEL

HAS THE VEINS ADDED.

LEAF AT LEFT.  
NOT RECUT



LEAF AT RIGHT.  
WITH VEINS ADDED



US 6

# UNITED STATES REVENUE ESSAYS

ENGRAVED AND PRINTED BY

THE NATIONAL BANK NOTE CO.

## PLATE ESSAYS

25 CENTS CERTIFICATE

POSITION NO. 4



DARK BROWN

ROSE

CARDBOARD

BOND PAPER

THE EXTRA VERTICAL LINES WITHIN THE OUTER FRAME LINES  
ARE IDENTICAL WITH POSITION NO. 1

ONLY THE RIGHT LEAF  
AT THE END OF THE "INTER. REVENUE" PANEL  
HAS THE VEINS ADDED

LEAF AT LEFT  
NOT RECUT



LEAF AT RIGHT  
WITH VEINS ADDED



250-



# UNITED STATES REVENUE ESSAYS

ENGRAVED AND PRINTED BY

THE NATIONAL BANK NOTE CO.

## PLATE ESSAYS

25 CENTS CERTIFICATE

POSITION NO. 6



BLUE



BROWN



DEEP CARMINE

INDIA PAPER



GREEN



RED



YELLOW BUFF

THE ADDITIONAL VERTICAL LINE WITHIN THE LEFT OUTER  
FRAME LINE IS CLOSE TO THE DESIGN, WHILE THE EXTRA  
RIGHT LINE IS CLOSE TO THE OUTER RIGHT FRAME LINE

THE VEINS IN THE LEAVES

AT THE ENDS OF THE "INTER. REVENUE" PANEL  
ARE DIFFERENT FROM THOSE OF ANY OTHER SUBJECT

540

# UNITED STATES REVENUE ESSAYS

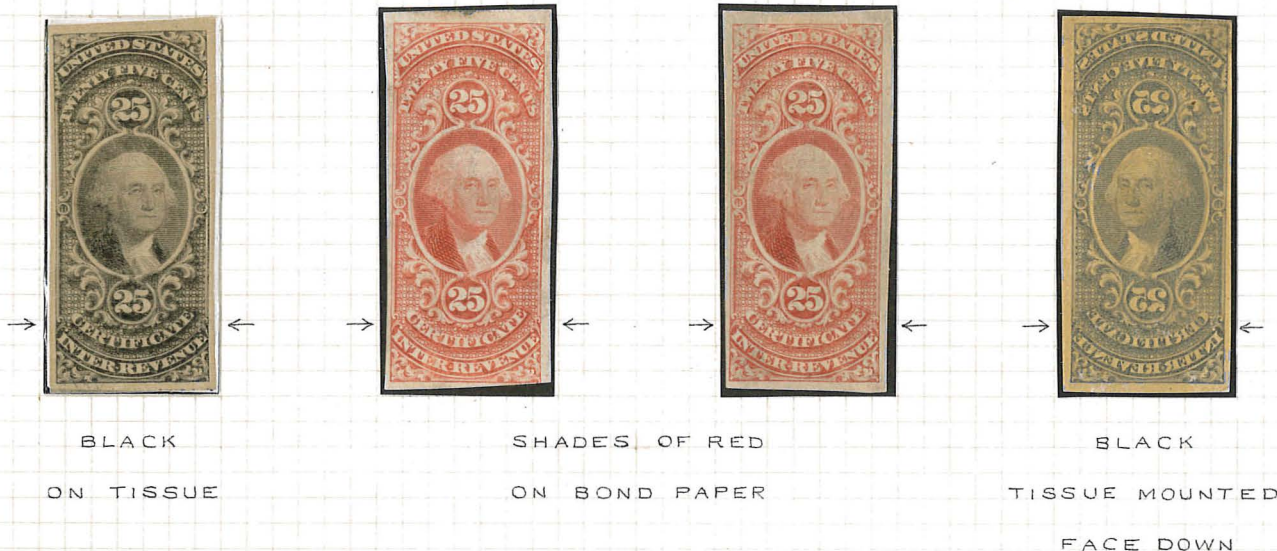
ENGRAVED AND PRINTED BY

THE NATIONAL BANK NOTE CO.

## PLATE ESSAYS

25 CENTS CERTIFICATE

POSITION NO. 6



BLACK  
ON TISSUE

SHADES OF RED  
ON BOND PAPER

BLACK  
TISSUE MOUNTED  
FACE DOWN

THE ADDITIONAL VERTICAL LINE  
WITHIN THE LEFT OUTER FRAME LINE  
IS CLOSE TO THE DESIGN, WHILE THE EXTRA RIGHT LINE  
IS CLOSE TO THE OUTER RIGHT FRAME LINE

THE VEINS IN THE LEAVES  
AT THE ENDS OF THE "INTER. REVENUE" PANEL  
ARE DIFFERENT FROM THOSE OF ANY OTHER SUBJECT

RECUT LEAF  
AT LEFT



RECUT LEAF  
AT RIGHT



# UNITED STATES REVENUE ESSAYS

ENGRAVED AND PRINTED BY

THE NATIONAL BANK NOTE CO.

## PLATE ESSAYS

25 CENTS CERTIFICATE



BLACK ON TISSUE

POSITIONS 1, 2 AND 3



BLACK ON TISSUE

POSITIONS 2, 3 AND 4

5407

# UNITED STATES REVENUE ESSAYS

ENGRAVED AND PRINTED BY

THE NATIONAL BANK NOTE CO.

## PLATE ESSAY

50 CENTS MORTGAGE

INDIA PAPER



BLACK

VARIETY 1

PANELS AT TOP AND BOTTOM

READING "UNITED STATES" AND "INTER. REVENUE"

HAVE BEEN ADDED.

THE LEFT SIDE OF THE VIGNETTE OVAL

AND PARTS OF LEAVES AT LEFT ARE MISSING.

IN THE AREA AT LEFT OF VIGNETTE

THERE ARE TWO GROUPS OF VERTICAL LINES.

THE SECOND GROUP CONSISTING OF THREE LINES.

IN THE AREA AT RIGHT OF VIGNETTE

VERTICAL LINES AND DOTS HAVE BEEN ADDED.

WHICH ARE ALMOST IDENTICAL ON ALL VARIETIES.



# UNITED STATES REVENUE ESSAYS

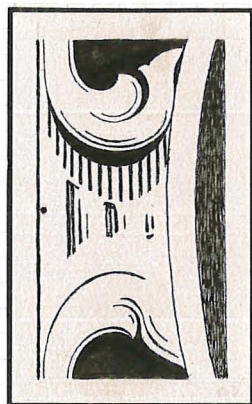
ENGRAVED AND PRINTED BY

THE NATIONAL BANK NOTE CO.

## PLATE ESSAY

50 CENTS MORTGAGE

INDIA PAPER



BLACK

VARIETY 3

IN THE AREA AT THE LEFT OF VIGNETTE

A THIRD GROUP OF TWO VERTICAL LINES

HAS BEEN ADDED

THE LEAVES TOUCHING THE OVAL AT LEFT

HAVE BEEN ALTERED BUT NOT COMPLETED

THIS VARIETY CORRESPONDS TO

THE SECOND ESSAY IN A HORIZONTAL STRIP OF THREE

WHICH IS IN THE CLARENCE H. EAGLE COLLECTION

OWNED BY THE LIBRARY OF CONGRESS

# UNITED STATES REVENUE ESSAYS

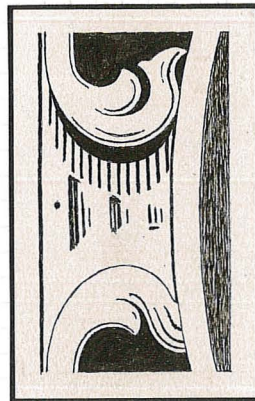
ENGRAVED AND PRINTED BY

THE NATIONAL BANK NOTE CO.

## PLATE ESSAY

50 CENTS MORTGAGE

INDIA PAPER



BLACK

VARIETY 5

SAME AS VARIETY 4 AT LEFT

THE RIGHT SIDE OF THE VIGNETTE OVAL  
IS COMPLETE

THIS ESSAY HAS A WIDER MARGIN AT RIGHT  
THAN ANY GUTTER BETWEEN THE SUBJECTS  
OF THE EAGLE STRIP OF THREE

IT IS PROBABLE THAT IT IS THE RIGHT HAND ESSAY  
OF A SMALL PLATE

FIVE SUBJECTS OF WHICH HAVE BEEN IDENTIFIED  
ON THESE PAGES



# UNITED STATES REVENUE ESSAYS

ENGRAVED AND PRINTED BY

THE NATIONAL BANK NOTE CO.

## PLATE ESSAY

50 CENTS MORTGAGE

VARIETY 5



BLACK

PRINTED ON INDIA PAPER

THEN MOUNTED ON INDIA PAPER ON CARDBOARD.

150-

# UNITED STATES REVENUE ESSAYS

ENGRAVED AND PRINTED BY

THE NATIONAL BANK NOTE CO.

## PLATE ESSAY

IMPERFORATE PRINT MOUNTED ON CARDBOARD

TO APPEAR AS A DIE ESSAY



LIGHT GREEN

ENGRAVED OVERPRINT

IN BLACK ON ENGRAVED FRAME

150



# UNITED STATES REVENUE ESSAYS

ENGRAVED AND PRINTED BY

THE NATIONAL BANK NOTE CO.

## PLATE ESSAYS

PERFORATED 12 AND GUMMED

BLACK  
ENGRAVED  
OVERPRINT



ON  
ENGRAVED  
FRAME

ORANGE



BLUE GREEN



DULL BLUE GREEN



DULL ORANGE

150

# UNITED STATES REVENUE ESSAYS

ENGRAVED AND PRINTED BY

THE NATIONAL BANK NOTE CO.

PLATE

ESSAYS

DULL BUFF

ON WHITE PAPER

PERFORATED 12

AND GUMMED



480

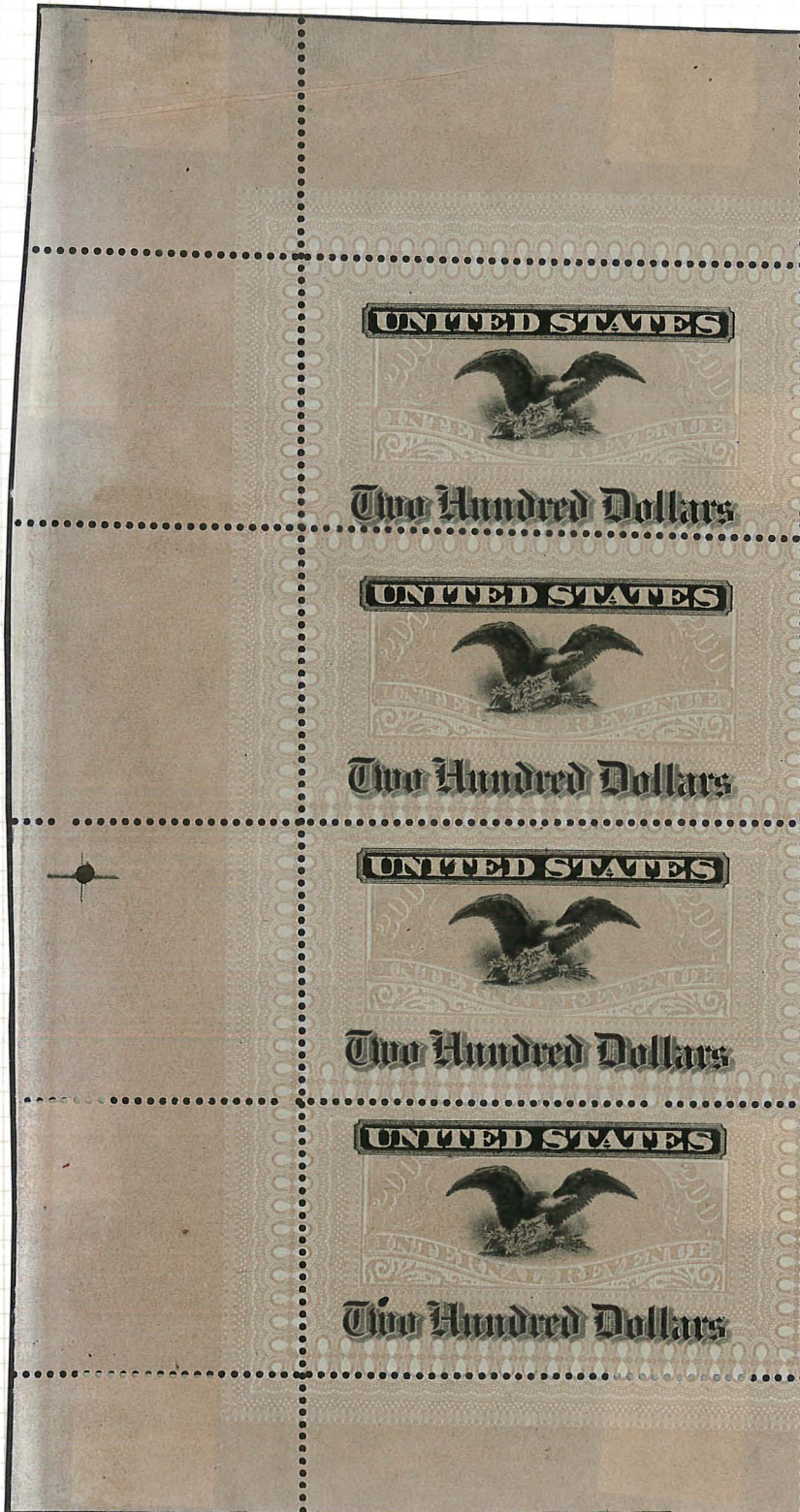


# UNITED STATES REVENUE ESSAYS

ENGRAVED AND PRINTED BY

THE NATIONAL BANK NOTE CO.

## PLATE ESSAYS



FRAME IN  
BROWNISH GRAY  
SURFACE PRINTED  
FROM THE  
ENGRAVED DIE  
SHOWING  
COLORED AND  
COLORLESS AREAS  
TRANSPOSED

LEFT MARGINAL  
STRIP OF FOUR  
SHOWING  
LATHEWORK BORDER  
AT TOP,  
BOTTOM AND LEFT

PERFORATED 12  
AND GUMMED

600



# UNITED STATES REVENUE ESSAYS

ENGRAVED AND PRINTED BY

THE NATIONAL BANK NOTE CO.

## PLATE ESSAYS



BRIGHT ORANGE FRAME

BLACK OVERPRINT

ON WHITE PAPER

GUMMED AND PERFORATED

LEFT MARGINAL

STRIP OF FOUR

SHOWING

LATHEWORK BORDER

AT TOP,

BOTTOM AND LEFT

THE FULL SHEET

WAS FOUR ROWS WIDE

AND THUS CONTAINED

16 SUBJECTS



# UNITED STATES REVENUE ESSAYS

ENGRAVED AND PRINTED

BY THE

NATIONAL BANK NOTE CO.

## PLATE ESSAYS

BROWN RED FRAME

ON WHITE PAPER

RIGHT MARGINAL

STRIP OF FOUR

SHOWING

LATHEWORK BORDER

AT TOP,

BOTTOM AND RIGHT

THE FULL SHEET

WAS FOUR ROWS WIDE

AND THUS CONTAINED

16 SUBJECTS



# UNITED STATES REVENUE ESSAYS

ENGRAVED AND PRINTED BY

THE NATIONAL BANK NOTE CO.

MODEL

AREA CUT OUT



FOR VIGNETTE

BROWN

PENCIL SUGGESTION WAS FOR THE WORDING

SURFACE PRINTED

FROM THE ENGRAVED DIE IN THE INITIAL STAGE



# UNITED STATES REVENUE ESSAYS

ENGRAVED AND PRINTED BY

THE NATIONAL BANK NOTE CO.

MODEL

PRINTED ON



CARDBOARD

RED.

SURFACE PRINTED

FROM THE SECOND STAGE OF THE ENGRAVED DIE

THE PENCIL LINES INDICATE AREAS

FOR ADDITIONAL ENGRAVING.

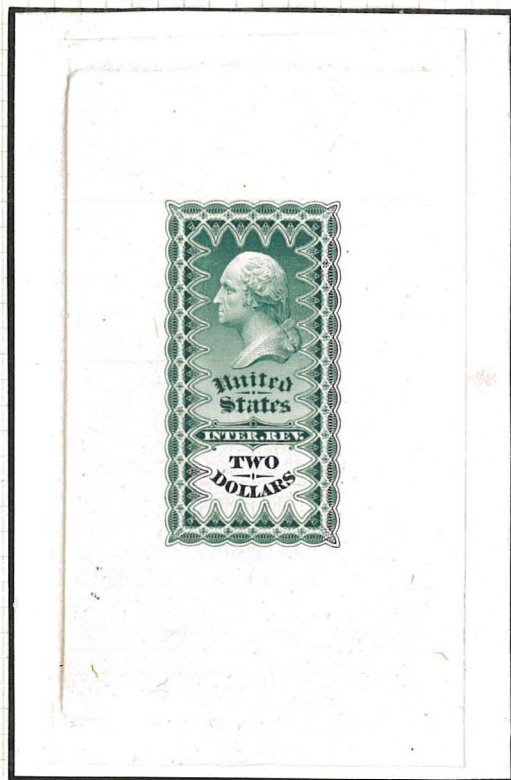
# UNITED STATES REVENUE ESSAYS

ENGRAVED AND PRINTED BY

THE NATIONAL BANK NOTE CO.

## DIE ESSAYS

THE  
COMPLETED  
DESIGN



INDIA PAPER  
ON  
CARDBOARD

GREEN

ESSAY PASTED  
ON CARDBOARD  
AND MARGINS  
CUT AWAY



MAKING  
WHAT IS  
CALLED  
A HYBRID

BROWNISH RED



# UNITED STATES REVENUE ESSAYS

ENGRAVED AND PRINTED BY

THE NATIONAL BANK NOTE CO.

## DIE ESSAY



BLACK

THIS COMPLETED ENGRAVED ESSAY

FLUORESCES DULL PINK

THERE IS A  $\frac{1}{4}$  INCH VERTICAL LINE BELOW WASHINGTON'S QUEUE  
INDICATING IT WAS MADE FROM AN ALTERED DIE.

# UNITED STATES REVENUE ESSAYS

ENGRAVED AND PRINTED BY

THE NATIONAL BANK NOTE CO.

## DIE ESSAYS

DESIGN PRINTED IN DEEP RED



BLUE



DEEP VIOLET

INDIA PAPER



MAUVE



DULL BLUE



BROWN



ORANGE

INDIA PAPER ON CARDBOARD

THE COLORS NAMED BELOW EACH ESSAY

REFER TO THE TINTED BACKGROUND, WHICH IS FORMED

BY A RECTANGLE OF VERTICAL PARALLEL LINES PRINTED IN SUCH COLORS



# UNITED STATES REVENUE ESSAYS

ENGRAVED AND PRINTED BY

THE NATIONAL BANK NOTE CO.

## DIE ESSAYS

DESIGN PRINTED IN GREEN



DULL VIOLET

INDIA PAPER



MARGINS

DARK ORANGE



YELLOW



TRIMMED

DARK PURPLE

THE COLORS NAMED BELOW EACH ESSAY

REFER TO THE TINTED BACKGROUND, WHICH IS FORMED  
BY A RECTANGLE OF VERTICAL PARALLEL LINES PRINTED IN SUCH COLORS

# UNITED STATES REVENUE ESSAYS

ENGRAVED AND PRINTED BY

THE NATIONAL BANK NOTE CO.

## DIE ESSAYS

INDIA PAPER

DESIGN IN



LIGHT RED

BUFF

INDIA PAPER ON CARDBOARD

DESIGN

IN ORANGE



MAUVE

DESIGN

IN ORANGE



SLATE GRAY

DESIGN

IN LIGHT RED



YELLOW

DESIGN

IN BROWN RED



GRAY BROWN

THE COLORS NAMED BELOW EACH ESSAY

REFER TO THE TINTED BACKGROUND, WHICH IS FORMED

BY A RECTANGLE OF VERTICAL PARALLEL LINES PRINTED IN SUCH COLOR

150-



# UNITED STATES REVENUE ESSAYS

ENGRAVED AND PRINTED BY

THE NATIONAL BANK NOTE CO.

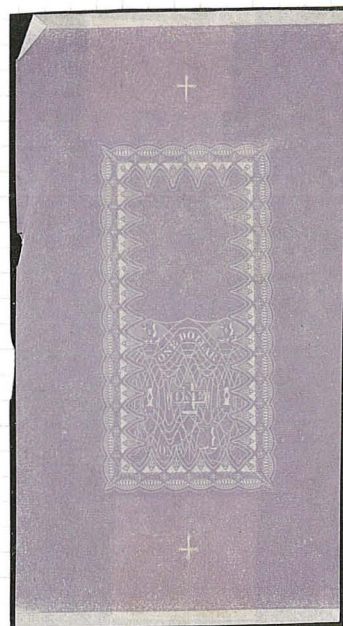
## DIE ESSAYS

SURFACE PRINTED FROM THE ENGRAVED DIE



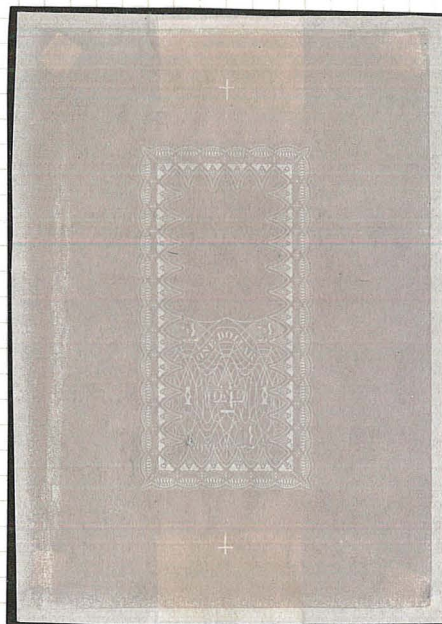
DULL PURPLE

THE  
SIDE  
MARGINS  
HAVE  
BEEN  
TRIMMED



DULL VIOLET

THIS ESSAY  
SHOWS THE



PALE DULL PURPLE

FULL AREA  
OF THE DIE

# UNITED STATES REVENUE ESSAYS

ENGRAVED AND PRINTED BY

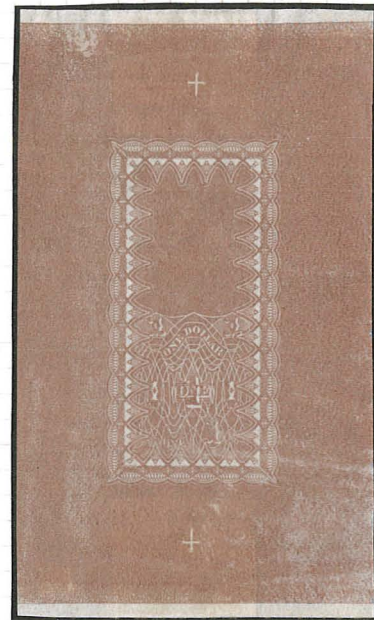
THE NATIONAL BANK NOTE CO.

## DIE ESSAYS

SURFACE PRINTED FROM THE ENGRAVED DIE



DULL BROWN



DULL BROWN RED

THE  
SIDE  
MARGINS  
HAVE  
BEEN  
TRIMMED



DULL TERRACOTTA



DARK TERRACOTTA



# UNITED STATES REVENUE ESSAYS

ENGRAVED AND PRINTED BY

THE NATIONAL BANK NOTE CO.

## MODEL

SURFACE PRINTED FROM THE ENGRAVED DIE



PURPLE

THE PENCILLED AREAS  
INDICATE WHERE THE VIGNETTE AND INSCRIPTIONS  
WERE INTENDED TO BE LOCATED.

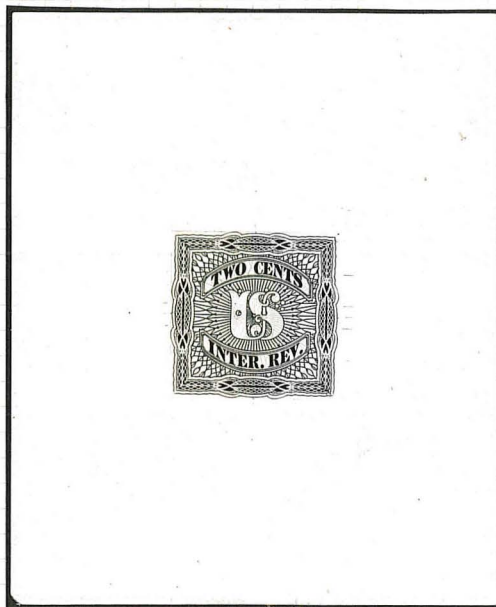
THE COLORLESS PARTS OF THE DESIGN ARE EMBOSSED  
FROM BEING FORCED INTO THE RECESSED LINES OF THE DIE

# UNITED STATES REVENUE ESSAYS

ENGRAVED AND PRINTED BY

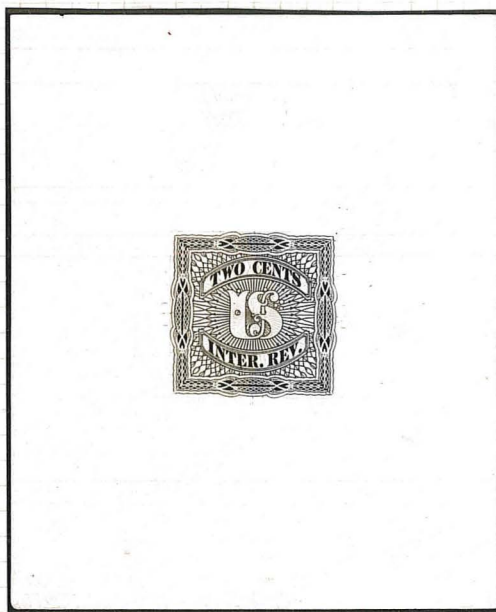
THE NATIONAL BANK NOTE CO.

## DIE ESSAYS



BLACK

HEAVY GLAZED PAPER WHICH FLUORESCES DULL PINK



BROWNISH BLACK



# UNITED STATES REVENUE ESSAYS

ENGRAVED AND PRINTED BY

THE NATIONAL BANK NOTE CO.

## DIE ESSAYS

SURFACE PRINTED FROM THE ENGRAVED DIE

CUT DOWN FROM IMPRESSIONS

LIKE THOSE ON THE PRECEDING PAGE.



GREEN

THIN  
PAPER



CARMINE



ORANGE

MEDIUM  
PAPER



DARK DULL VIOLET

INDIA PAPER  
ON CARDBOARD



BROWN

110

# UNITED STATES REVENUE ESSAYS

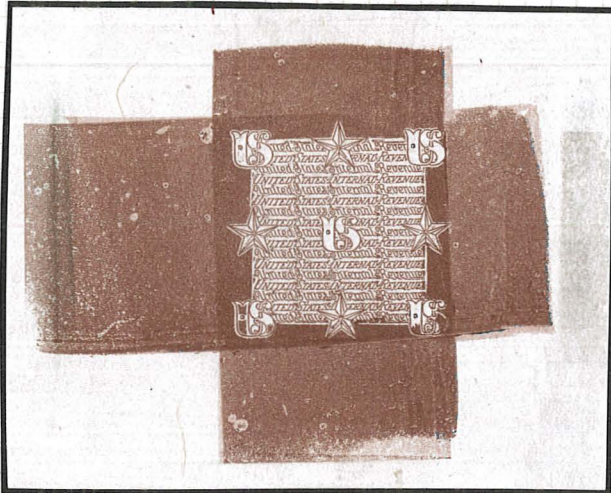
ENGRAVED AND PRINTED BY

THE NATIONAL BANK NOTE CO.

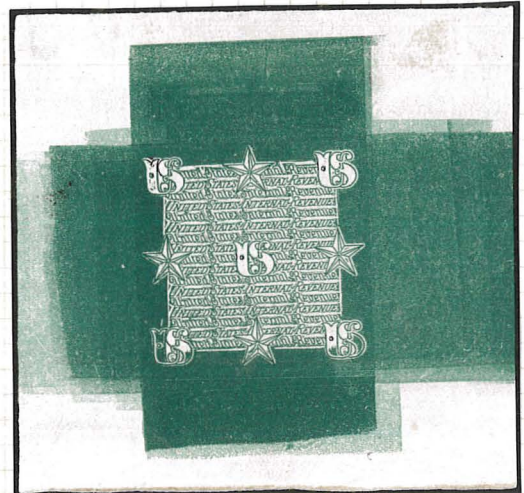
## DIE ESSAYS

SURFACE PRINTED FROM AN UNFINISHED ENGRAVED DIE  
THE LETTERS "US" AT LOWER CORNERS ARE INCOMPLETE

INDIA PAPER



BROWN



GREEN

100



# UNITED STATES REVENUE ESSAYS

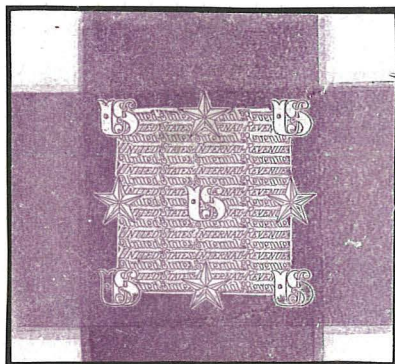
ENGRAVED AND PRINTED BY

THE NATIONAL BANK NOTE CO.

## DIE ESSAYS

SURFACE PRINTED FROM AN ENGRAVED DIE

PRINTED FROM THE UNFINISHED DIE



VIOLET

WHITER PAPER

THAN THOSE ON PRECEDING PAGE

PRINTED FROM THE FINISHED DIE



LIGHT RED

PERFORATED AND GUMMED

TO SIMULATE A STAMP

# UNITED STATES REVENUE ESSAYS

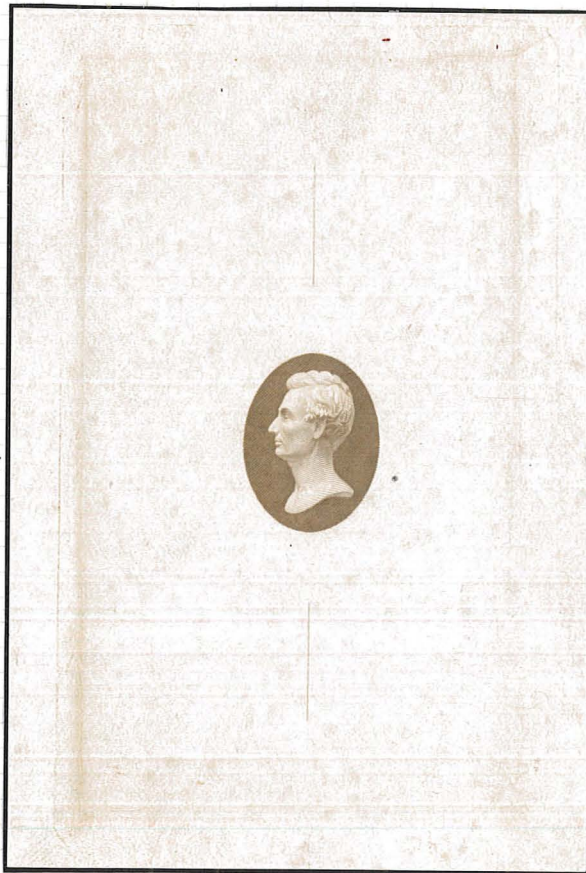
ENGRAVED AND PRINTED BY

THE NATIONAL BANK NOTE CO.

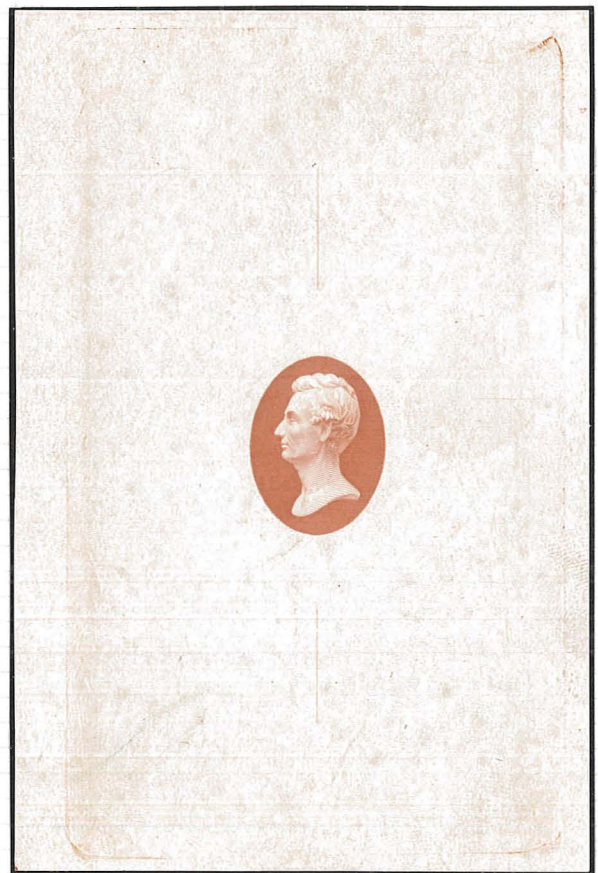
## DIE ESSAYS

INTAGLIO BUST OF LINCOLN

USED AS CENTRAL MOTIF OF COMPLETE DESIGN



OLIVE BROWN



RED

IMPRESSIONS FROM THE FULL DIE  
SHOWING VERTICAL GUIDE LINES ABOVE AND BELOW THE OVAL

THE PAPER FLUORESCES PINK



# UNITED STATES REVENUE ESSAYS

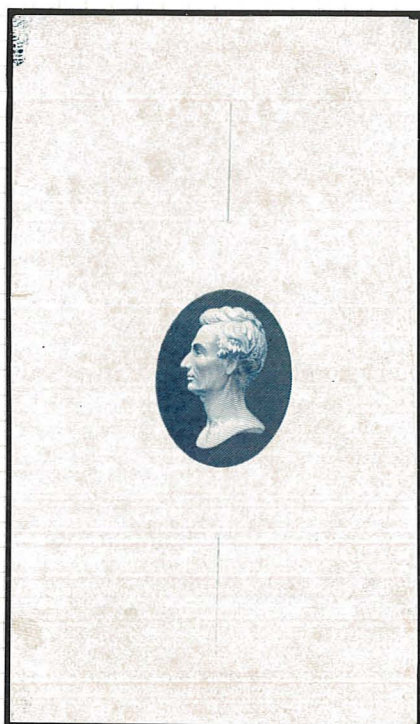
ENGRAVED AND PRINTED BY

THE NATIONAL BANK NOTE CO.

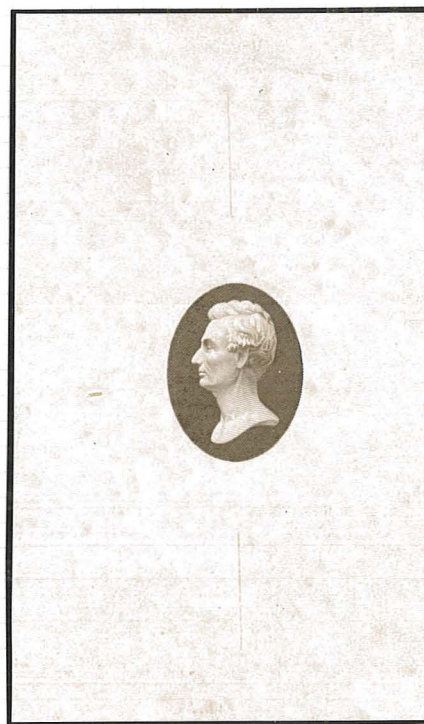
## DIE ESSAYS

INTAGLIO BUST OF LINCOLN.

USED AS CENTRAL MOTIF OF COMPLETE DESIGN



DARK BLUE



DARK BROWN

TRIMMED IMPRESSIONS FROM THE FULL DIE  
SHOWING VERTICAL GUIDE LINES ABOVE AND BELOW THE OVAL

THE PAPER FLUORESCES PINK

# UNITED STATES REVENUE ESSAYS

ENGRAVED AND PRINTED BY

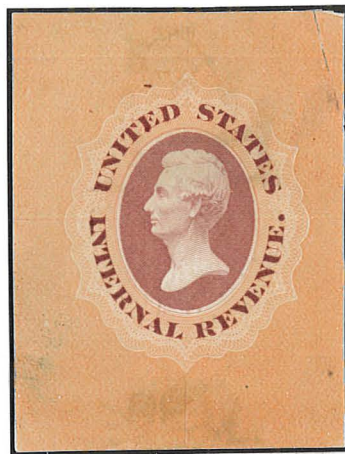
THE NATIONAL BANK NOTE CO.

## DIE ESSAYS

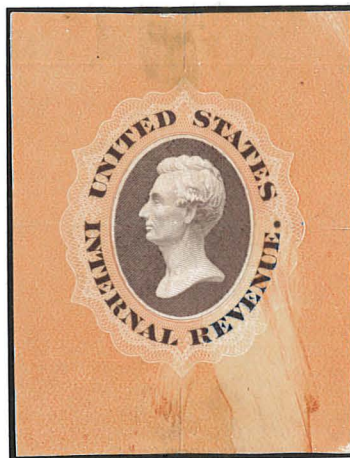
INTAGLIO WORDING

"UNITED STATES INTERNAL REVENUE"

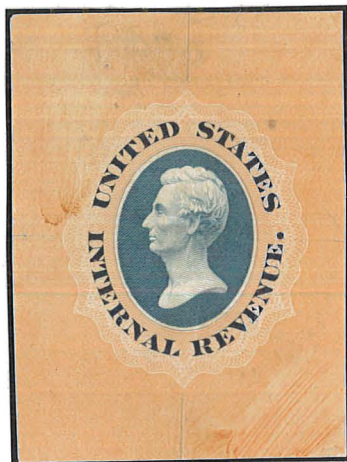
ADDED TO MEDALLION OF LINCOLN



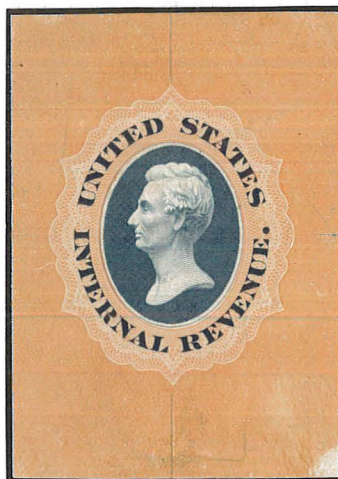
DARK RED



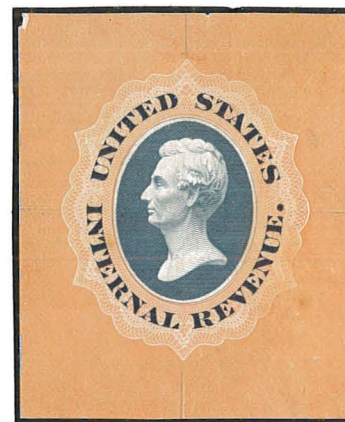
DULL PURPLE



GRAY BLUE



BLUE



DARK BLUE

THE FRAME IS OVERPRINTED  
FROM THE SURFACE OF AN ENGRAVED DIE  
IN DULL ORANGE FUGITIVE INK

750



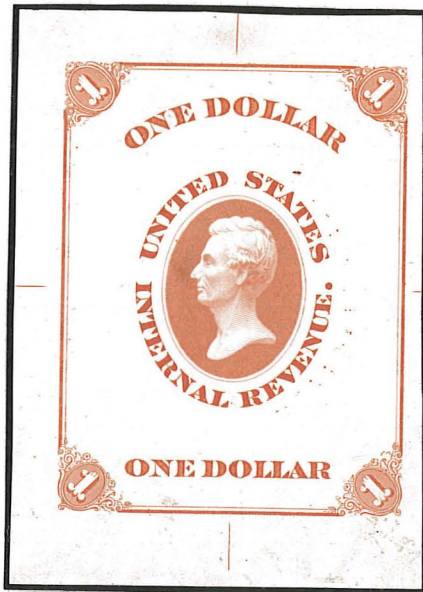
# UNITED STATES REVENUE ESSAYS

ENGRAVED AND PRINTED BY

THE NATIONAL BANK NOTE CO.

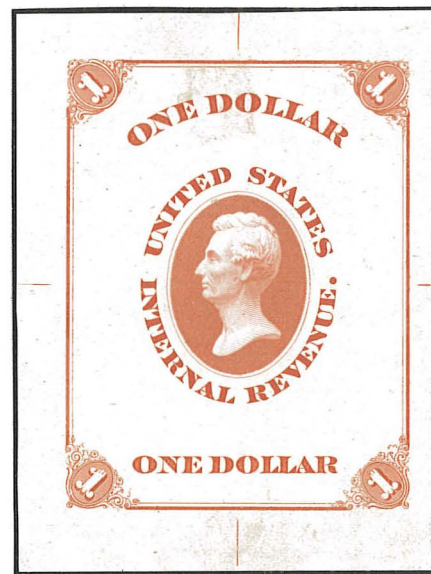
## DIE ESSAYS

WITH "ONE DOLLAR" ADDED AT TOP AND BOTTOM  
AND LARGE RECTANGULAR FRAME SURROUNDING ALL

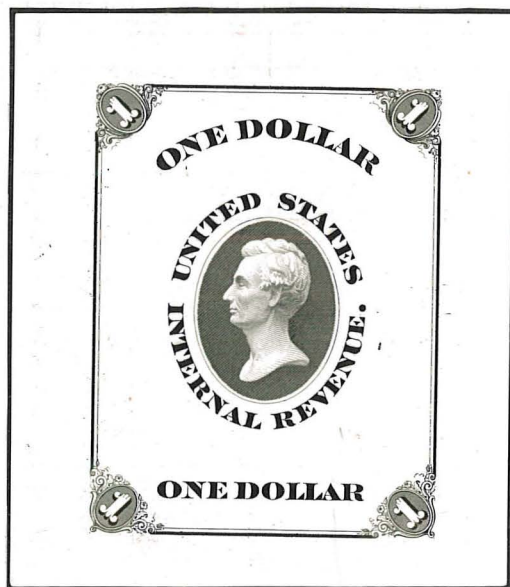


FLUORESCES DULL BUFF

RED

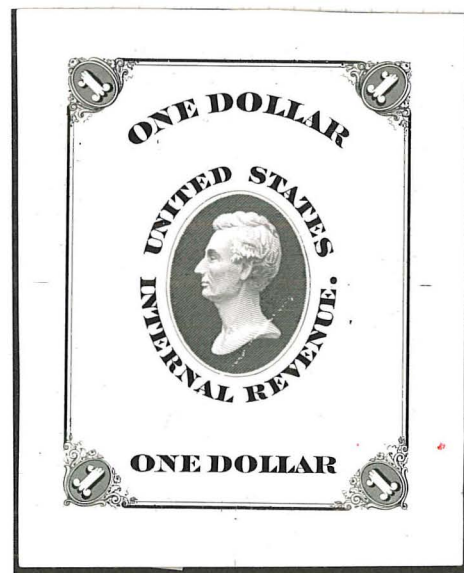


FLUORESCES YELLOW



FLUORESCES LIGHT PINK

BLACK



FLUORESCES DEEP ROSE

220-

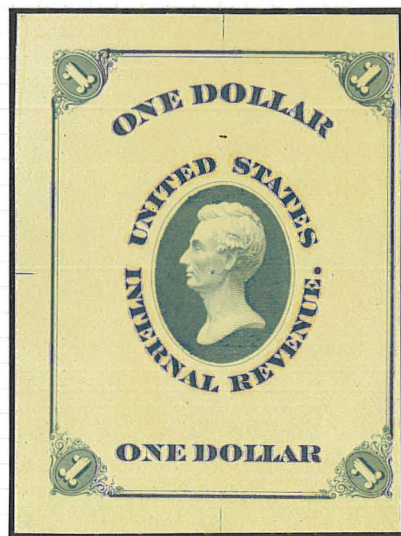
# UNITED STATES REVENUE ESSAYS

ENGRAVED AND PRINTED BY

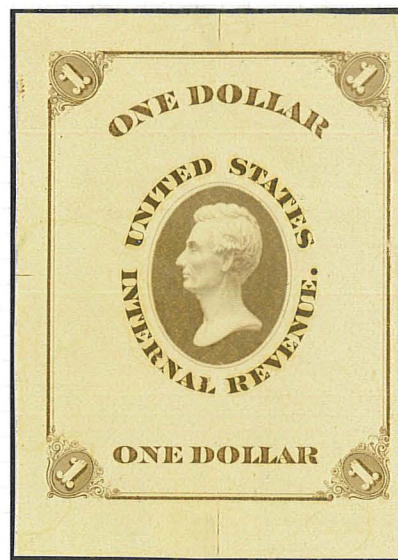
THE NATIONAL BANK NOTE CO.

## DIE ESSAYS

WITH "ONE DOLLAR" ADDED AT TOP AND BOTTOM  
AND LARGE RECTANGULAR FRAME SURROUNDING ALL

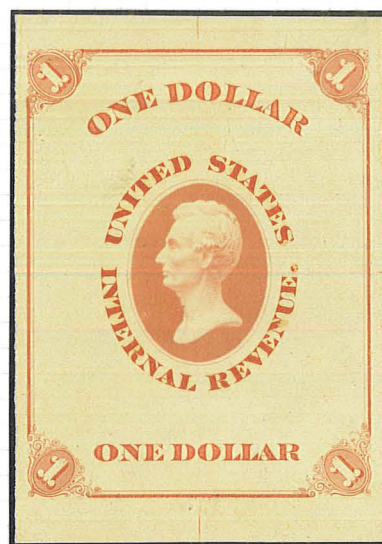


BLUE



BROWN

INCOMPLETE  
ESSAYS  
WITHOUT  
OVERPRINTED  
BACKGROUND



RED

ENGRAVING  
ON YELLOW  
SURFACE  
COLORED  
PAPER

THE PAPER FLUORESCES BROWN ~ THE INK FLUORESCES YELLOW



# UNITED STATES REVENUE ESSAYS

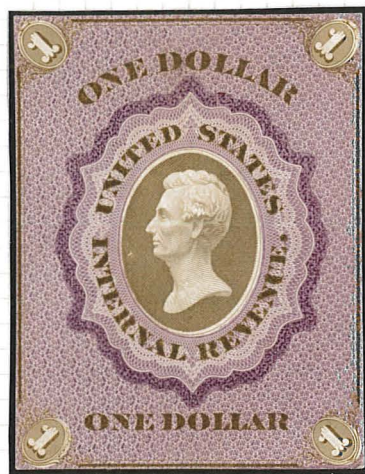
ENGRAVED AND PRINTED BY

THE NATIONAL BANK NOTE CO.

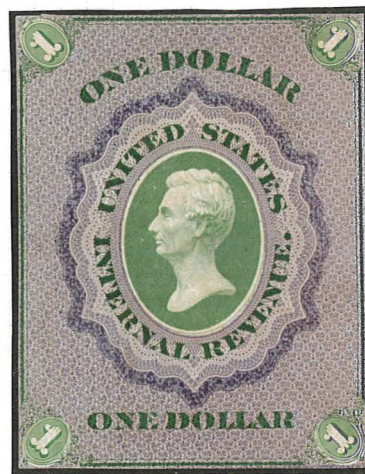
## DIE ESSAYS

THE VIGNETTE, OUTER FRAME AND LETTERING ARE ENGRAVED

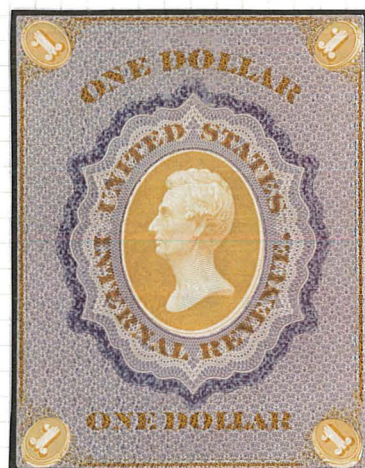
THE BACKGROUND IS SURFACE PRINTED IN FUGITIVE INK.



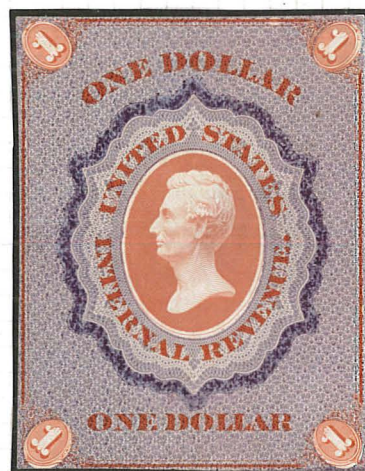
PURPLE AND DULL OLIVE



VIOLET AND BRIGHT GREEN



VIOLET AND ORANGE



VIOLET AND RED

# UNITED STATES REVENUE ESSAYS

ENGRAVED AND PRINTED BY

THE NATIONAL BANK NOTE CO.

## DIE ESSAYS

CUT DOWN BY HAND.

WITH THE DARK OUTER BORDER CUT AWAY.



RED VIGNETTE

LIGHT  
GREEN  
BACKGROUND

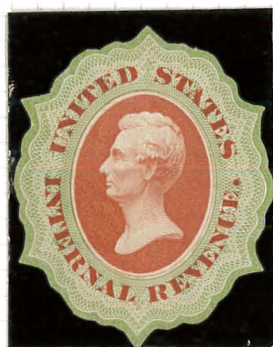


BRIGHT RED VIGNETTE

VIGNETTE AND LETTERING ENGRAVED

BACKGROUND SURFACE PRINTED IN FUGITIVE INK

DARK OUTER BORDER TRIMMED TO SHAPE



RED VIGNETTE

GREEN  
BACKGROUND



BRIGHT RED VIGNETTE



# UNITED STATES REVENUE ESSAYS

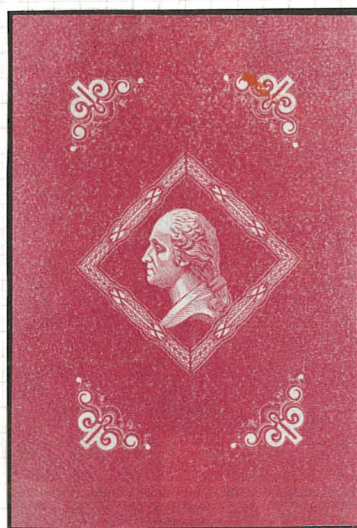
ENGRAVED AND PRINTED BY

THE NATIONAL BANK NOTE CO.

## DIE ESSAY

SURFACE PRINTED FROM AN ENGRAVED DIE

PROFILE OF  
WASHINGTON  
COPIED FROM



THE 3¢  
POSTAGE STAMP  
OF 1861

CRIMSON

PROGRESS IMPRESSION FROM THE INCOMPLETE DIE  
SHOWING ONLY THE MEDALLION FRAME AND CORNERS

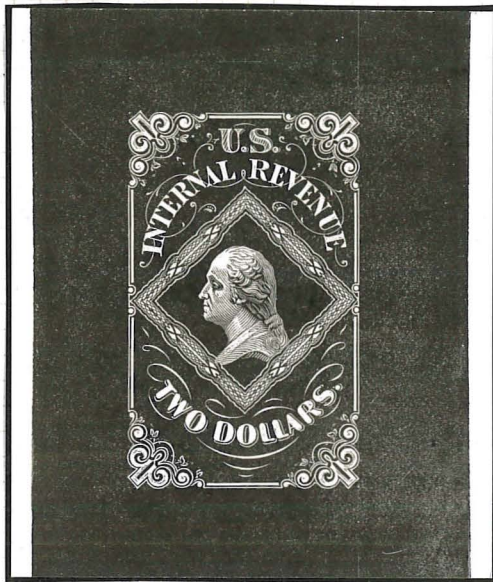
# UNITED STATES REVENUE ESSAYS

ENGRAVED AND PRINTED BY

THE NATIONAL BANK NOTE CO.

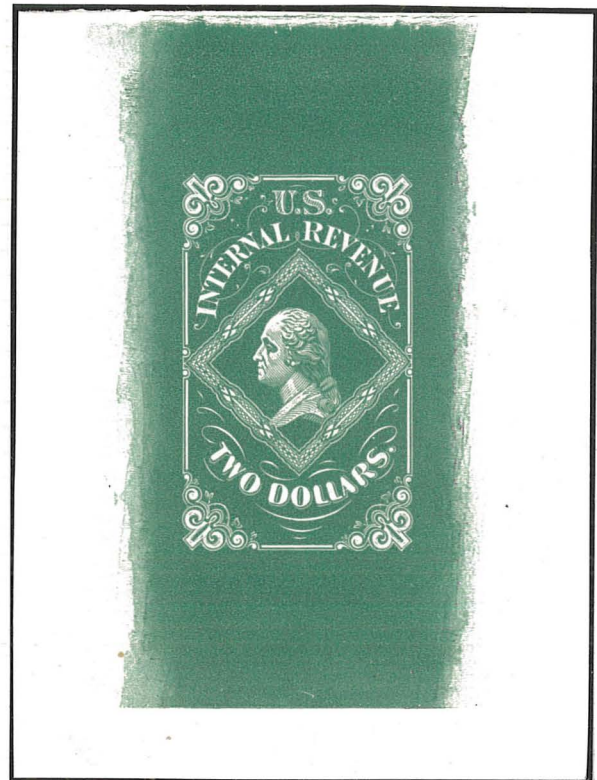
## DIE ESSAY

SURFACE PRINTED FROM ENGRAVED DIE



IN BLACK

ON HEAVY PAPER



IN GREEN

ON CARDBOARD



# UNITED STATES REVENUE ESSAYS

ENGRAVED AND PRINTED BY

THE NATIONAL BANK NOTE CO.

## DIE ESSAYS

PERFORATED TO SIMULATE STAMPS FROM A SHEET

FULLY GUMMED



CARMINE



RED

SURFACE PRINTED FROM AN ENGRAVED DIE

THIN WHITE PAPER



VERMILION



ROSY RED

# UNITED STATES REVENUE ESSAYS

ENGRAVED AND PRINTED BY

THE NATIONAL BANK NOTE CO.

## DIE ESSAY

DESIGNED BY BUTLER PACKARD

INDIA PAPER WITH CARDBOARD BACKING



GREEN

A SIMILAR ESSAY

WITH THE WORDING CHANGED TO "U.S. POSTAGE"

WAS OFFERED AS A DESIGN FOR STAMPED ENVELOPES



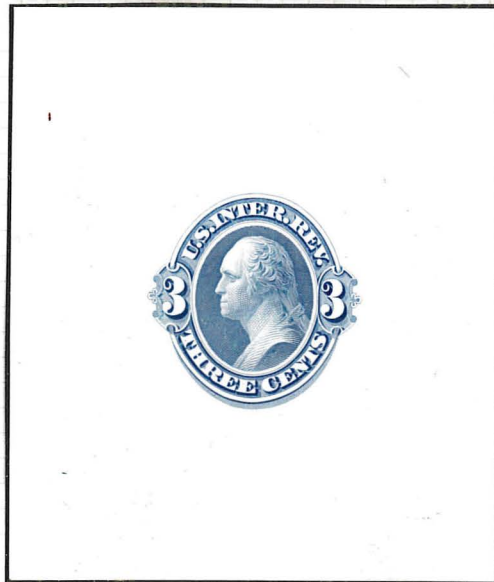
# UNITED STATES REVENUE ESSAYS

ENGRAVED AND PRINTED BY

THE NATIONAL BANK NOTE CO.

## DIE ESSAYS

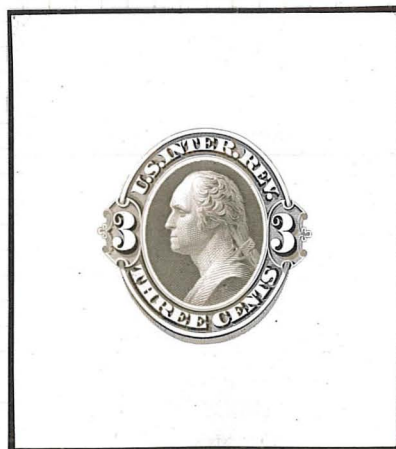
DESIGNED BY BUTLER PACKARD



BLUE

FLUORESCES BROWN

HEAVY WHITE GLOSSY PAPER



GRAY BROWN

FLUORESCES PINK

# UNITED STATES REVENUE ESSAYS

ENGRAVED AND PRINTED BY

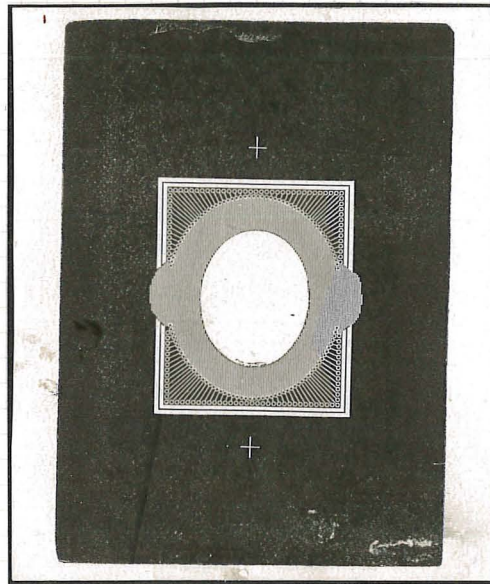
THE NATIONAL BANK NOTE CO.

## DIE ESSAYS

THIRD AND FINAL STAGE OF A FRAME

FOR THE DEFINITIVE ESSAY

THE  
VERTICAL  
LINES ARE  
REMOVED  
FROM THE  
CENTRAL  
OVAL



COLORLESS  
VERTICAL  
LINES  
HAVE BEEN  
ADDED TO  
THE OUTER  
OVAL

BLACK

SURFACE PRINTED FROM AN ENGRAVED DIE



BROWN

SLOTTED  
FOR  
PRINTING



DULL PINK