



United States

Booklet Panes



SERIES OF
1902-03

1903

This shield type design was more acceptable to the public. The booklet panes were first issued on December 3, 1903, approximately ten months after the first 2c 1902 Series design was released.

George Washington

3196



SERIES OF
1908-09

1908

UNWATERMARKED
PERF. 12

Benjamin Franklin

331a



George Washington

332a





United States *Booklet Panes*



SERIES OF
1910-11

1910

SINGLE-LINE WATERMARK

PERF. 12

Benjamin Franklin

374a



George Washington

375a



ISSUES OF
1912-14

1912

George Washington

405b



George Washington

406a





United States

Booklet Panes

ISSUES OF
1914-15

1914

SINGLE-LINE WATERMARK
PERF. 10



George Washington

424d



George Washington

425c



George Washington

462a



George Washington

463a

SERIES OF
1916-17

1916

UNWATERMARKED
PERF. 10





United States

Booklet Panes

1917



George Washington

498e

1917



George Washington

499e

SERIES OF
1917-19

1917



George Washington

501b

1918



George Washington

502b

UNWATERMARKED

PERF. 11





United States

Booklet Panes



Benjamin Franklin

552a

1926

Rotary Press Printing — Perf. 10



George Washington

554c

1927

Rotary Press Printing — Perf. 11 x 10½



George Washington

583a



Benjamin Franklin

632a



George Washington

634d





United States *Booklet Panes*

LINDBERGH

1928



Spirit of St. Louis

C10a

PRESIDENTIAL SERIES OF 1938

1932



George Washington

720b

Issued to commemorate the first non-stop solo flight by Charles A. Lindbergh from New York to Paris in May of 1927. The booklet pane was first placed on sale May 26, 1928.

1939



George Washington

804b



John Adams

806b



Thomas Jefferson

807a



* 1912-1917 *

BOOKLET PANES



10x10

405 B



10x10



12x12

406 A



425 E



463 A



498 E



499 E



501 A



501 G (501 E)

* 1922-1932 *

BOOKLET PANES



11 x 11

552 A



11 x 11

554 C



11 x 10 1/2

632 A



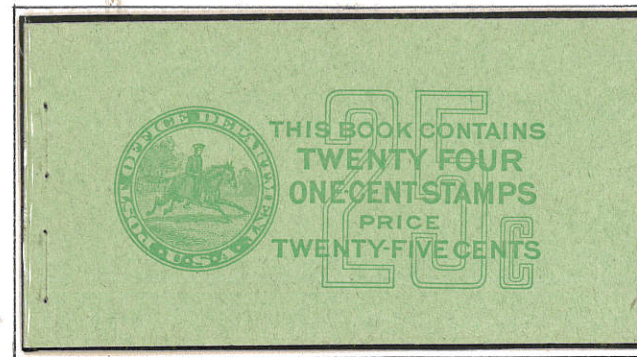
11 x 10 1/2

634 D



11 x 10 1/2

720 B



BC 5A



84104

804 B



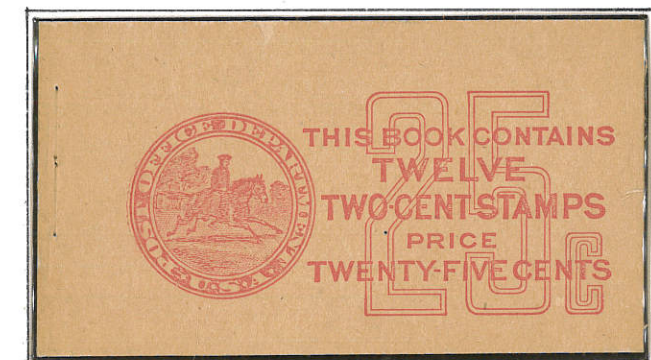
84105

806 B

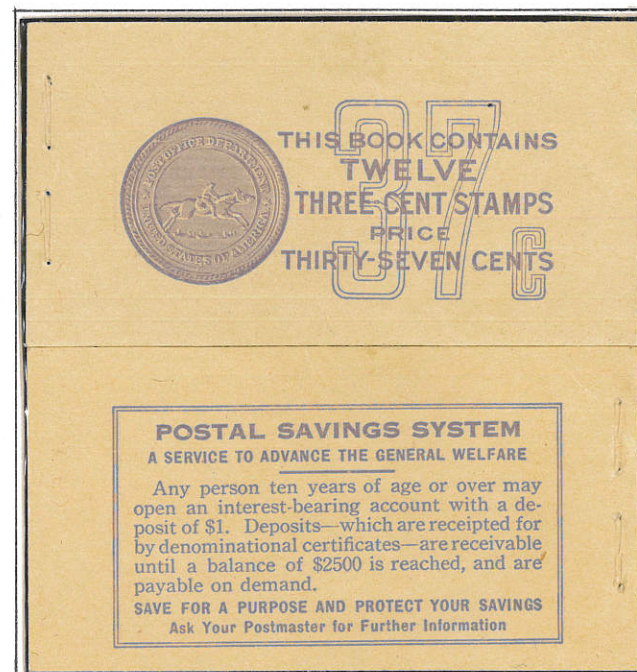
* 1938-1943 *

PRESIDENTIAL ISSUE

BOOKLET PANES



BC 5B



BC 9B



84106

807 A

1983 BOOKLET PANES
EXPRESS MAIL



**SPEED. RELIABILITY. ECONOMY.
THAT'S WHAT EXPRESS MAIL NEXT DAY
SERVICE DELIVERS EVERY SINGLE DAY.**

Our 2-Pound Pak is just \$9.35. About half
what most others charge.

So enjoy just about everything you could
ask for in overnight delivery.

Including big savings.

When using this stamp for
Express Mail service, you
must also use Label 11B.



**3 STAMPS
NINE
DOLLARS AND
THIRTY-FIVE
CENTS**

**FOR
\$28.05**



PRESS HARD
YOU ARE MAKING 4 COPIES

FROM:

Customer Number, if any:

TO:

Label 11-B, Jan. 1983 ★ U.S.G.P.O. 1982-384-133

**EXPRESS
MAIL
NEXT DAY SERVICE**

**POST OFFICE
TO ADDRESSEE**



B 34560786

SERVICE GUARANTEE:
Domestic mailings under this service made at designated USPS facilities on or before a specified deposit time will be accepted for express shipment to a designated USPS delivery area having Express Mail Service for next day delivery to an addressee or agent on or before the time specified by the USPS at mailing. USPS will refund upon application to originating office the postage for any shipments mailed under this service and not meeting the service standard except for those delayed by strike or work stoppage. See USPS Notice 43 for details.
INSURANCE COVERAGE:
See USPS Notice 7 or Notice 63 for exclusions of coverage.
(1) *Document Reconstruction Insurance* Non-negotiable documents are insured against loss, damage, or rifling up to \$50,000 per piece, subject to a limit of \$500,000 per occurrence.
(2) *Merchandise Insurance* Parcels are insured against loss, damage, or rifling up to a maximum of \$500.

• Signature is required upon delivery.
• Claims for delay, loss, damage or rifling must be made within 90 days. Claim forms may be obtained at the post office of mailing.
• This receipt must be presented when a claim is filed.

**EXPRESS MAIL SERVICE
Customer Receipt**

REMOVE COPIES 1 & 2

**REMOVE copies 1 & 2 with this stub
(Postal Service Personnel Only)**

* 1985 * BOOKLET PAGES
EXPRESS MAIL



SPEED. RELIABILITY. ECONOMY.
THAT'S WHAT EXPRESS MAIL NEXT DAY
SERVICE DELIVERS EVERY SINGLE DAY.

Our 2-Pound Pak is just \$10.75. About half
what most others charge.

So enjoy just about everything you could
ask for in overnight delivery.

Including big savings.

When using this stamp for
Express Mail service, you
must also use Label 11B or F.



Three
\$10.75
Stamps
\$32.25

* 1985 * SEA SHELLS



Collect 8" x 10 1/2"
Souvenir Pages

with stamps and "First Day of Issue"
cancellations available for all stamps,
designed for albums or framing. You will
receive a Souvenir Page for every future
stamp issue for \$1.00 each (some pages
may be priced at more than \$1.00,
depending upon the amount of postage
affixed) by sending a \$20.00 deposit with
order form on reverse. Or, for
a preview of this exciting
program, return the coupon
on reverse for a free
Souvenir Page.

