



Euro  
*Orange brown*  
Nr.  
*10 0*  
\*    ( )    \*\*



Euro  
*Orange brown*  
Nr.  
*10A \* (4.g.)*  
\*    ( )    \*\*



Euro  
*Orange brown*  
Nr.  
*10A 0*  
\*    ( )    \*\*



Euro  
*Orange brown*  
Nr.  
*10A 0*  
\*    ( )    \*\*



Euro  
*Orange brown*  
Nr.  
*10A 0*  
\*    ( )    \*\*



Euro  
*Orange brown*  
Nr.  
*10A 0*  
\*    ( )    \*\*



Euro  
*Orange brown*  
Nr.  
*10A 0*  
\*    ( )    \*\*



Euro  
*Dull red*  
Nr.  
*11 0*  
\*    ( )    \*\*



Euro  
*Dull red*  
Nr.  
*11 0*  
\*    ( )    \*\*



Euro  
*Dull red*  
Nr.  
*11 0*  
\*    ( )    \*\*



Euro  
*Dull red*  
Nr.  
*11 0*  
\*    ( )    \*\*



Euro  
*Dull red*  
Nr.  
*11 0*  
\*    ( )    \*\*



Euro  
*Dull red*  
Nr.  
*11 0*  
\*    ( )    \*\*



Euro  
*Dull red*  
Nr.  
*11 0*  
\*    ( )    \*\*



Euro  
*Dull red*  
Nr.  
*11 0*  
\*    ( )    \*\*



Euro  
*Dull yellowish*  
Nr.  
*11 VAR*  
\*    ( )    \*\*



Euro  
*Dull orange red*  
Nr.  
*11 0*  
\*    ( )    \*\*



Euro  
*Double orange*  
*Orange red*  
Nr.  
*11 0*  
\*    ( )    \*\*





Euro  
Brownish green

Nr. 11<sup>0</sup>

\* ○ \*\*



Euro  
Brownish green

Nr. 11<sup>0</sup>

\* ○ \*\*



Euro  
Claret

Nr. 11<sup>0</sup>

\* ○ \*\*



Euro  
Claret

Nr. 11<sup>0</sup>

\* ○ \*\*



Euro  
Brownish green

Nr. 11A<sup>0</sup>

\* ○ \*\*



Euro  
Brownish green

Nr. 11A<sup>0</sup>

\* ○ \*\*



Euro  
Keat button  
Brownish green

Nr. 11A<sup>0</sup>

\* ○ \*\*



Euro  
Claret

Nr. 11A<sup>0</sup>

\* ○ \*\*



Euro  
Claret

Nr. 11A<sup>0</sup>

\* ○ \*\*



Euro  
Deep claret

Nr. 11A<sup>0</sup>

\* ○ \*\*



Euro  
Three Rows

Nr. 8-10/98-100

\* ○ \*\*



Euro  
Dull red

Nr. 11A<sup>0</sup>

\* ○ \*\*



Euro  
Dull red

Nr. 11A<sup>0</sup> E

\* ○ \*\*



Euro  
Dull red

Nr. 11A<sup>0</sup> E

\* ○ \*\*



Euro  
Dull red

Nr. 11A<sup>0</sup>

\* ○ \*\*



Euro  
Dull red

Nr. 11A<sup>0</sup> VAR<sup>0</sup>

\* ○ \*\*



Euro  
Dull red

Nr. 11A<sup>0</sup>

\* ○ \*\*



Euro  
Dull red

Nr. 11A<sup>0</sup>

\* ○ \*\*





Euro  
Dull red  
Nr. 11A<sup>0</sup>  
\* ○ \*\*



Euro  
Dull red  
Nr. 11A<sup>0</sup>  
\* ○ \*\*



Euro  
Dull red  
Nr. 11A<sup>0</sup>  
\* ○ \*\*



Euro  
Dull red  
Nr. 11A<sup>0</sup>  
\* ○ \*\*



Euro  
Dull red  
Nr. 11A<sup>0</sup>  
\* ○ \*\*



Euro  
Dull red  
Nr. 11A<sup>0</sup>  
\* ○ \*\*



Euro  
Dull red  
Nr. 11A<sup>0</sup>  
\* ○ \*\*



Euro  
Dull red  
Nr. 11A<sup>0</sup>  
\* ○ \*\*



Euro  
Dull red  
Nr. 11A<sup>0</sup>  
\* ○ \*\*



Euro  
Dull red  
Nr. 11A<sup>0</sup>  
\* ○ \*\*



Euro  
Dull red  
Nr. 11A<sup>0</sup>  
\* ○ \*\*



Euro  
Dull red  
Nr. 11A<sup>0</sup>  
\* ○ \*\*



Euro  
Dull red  
Nr. 11A<sup>0</sup>  
\* ○ \*\*



Euro  
Dull red  
Nr. 11A<sup>0</sup>  
\* ○ \*\*



Euro  
Dull red  
Nr. 11A<sup>0</sup>  
\* ○ \*\*



Euro  
Dull red  
Nr. 11A<sup>0</sup>  
\* ○ \*\*



Euro  
Dull red  
Nr. 11A<sup>0</sup>  
\* ○ \*\*



Euro  
Dull red  
Nr. 11A<sup>0</sup>  
\* ○ \*\*





Euro 71-45221  
Orange red  
Nr. 11A<sup>5</sup>  
\* ○ \*\*



Euro  
Dull orange red  
Nr. 11A<sup>0</sup>  
\* ○ \*\*



Euro  
Rose red  
Nr. 11A<sup>0</sup>  
\* ○ \*\*



Euro  
Rose red  
Nr. 11A<sup>07</sup>  
\* ○ \*\*



Euro  
Dull rose red  
Nr. 11A<sup>0</sup>  
\* ○ \*\*



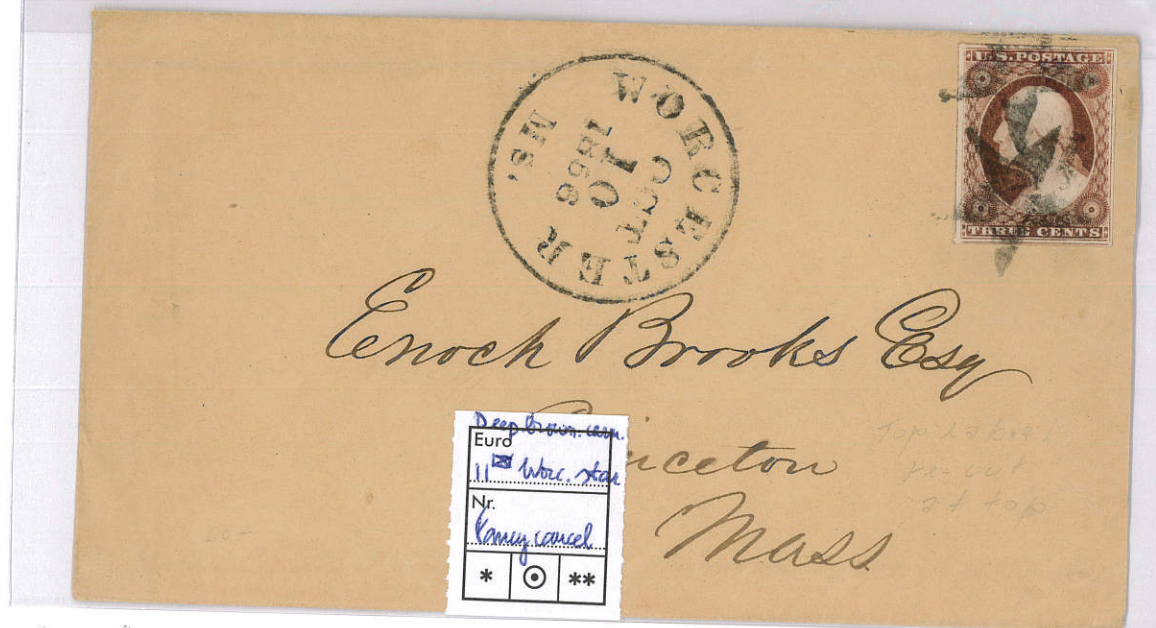
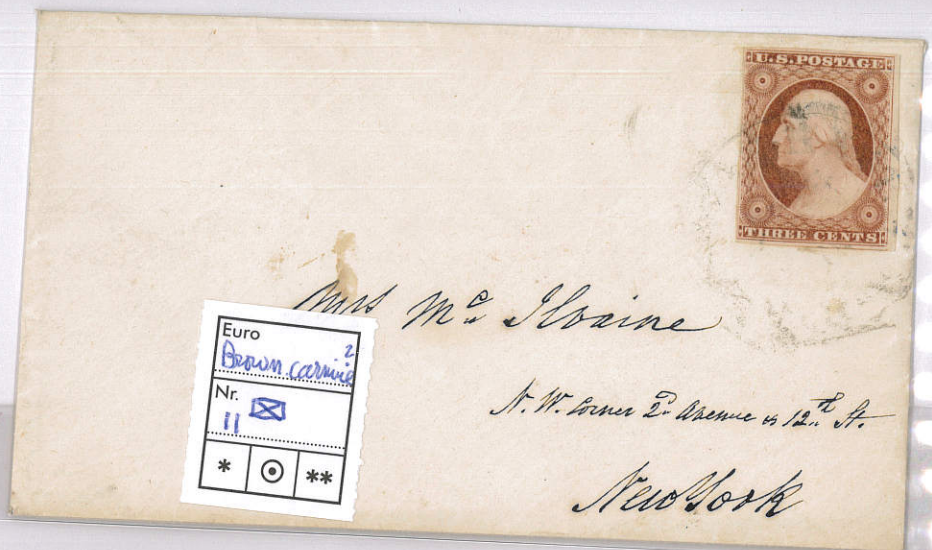
Euro  
Deep Rose red  
Nr. 11A<sup>0</sup>  
\* ○ \*\*



Euro  
Nr. 35<sup>0</sup>  
\* ○ \*\*









Bro Campbell

Please find enclosed  
check for \$30.75<sup>00</sup> from Richmond

Yours truly  
G. E. Temple  
Elder Geo. C. Fingle  
Washington City  
H. P.



**L. MIRO**

15, Rue Laffitte

PARIS (9<sup>e</sup>)

PRO. : 58-89



EXPERT

Je soussigné L. MIRO, Expert près le Tribunal Civil de la Seine, certifie avoir examiné  
le timbre des ETATS-UNIS de 1851-  
1858, 3c. rouge, oblitéré -----

N° 4 du catalogue Yvert  
photographié ci-dessus.

Mon opinion est que la pièce est authentique  
Elle était sans réparation ni truquage  
lors de l'examen -----

Fait à Paris 5 Juin 1956

N° 2594





# The Philatelic Foundation

70 West 40th Street • 15th Floor  
New York, NY 10018  
EXPERT COMMITTEE

No. 508780  
12/17/2012

We have examined the enclosed item, of which a photograph is attached, and *described by the applicant* as follows:

Country:

UNITED STATES OF AMERICA

Cat. No.

Issue

Denom.

Color

35

1859

10¢

green

Scott's unless otherwise specified.

USED, STRADDLE MARGIN SINGLE, WITH CENTER LINE AT LEFT.

AND WE ARE OF THE OPINION THAT:

IT IS GENUINE\*\*\*\*\*



508780

F 228590

Photocopies of this Certificate are not valid.

For The Expert Committee  
*Chairman*

Submitted by



No. 01246775

1/27/2012



**Professional Stamp Experts**  
P.O. Box 6170, Newport Beach, CA 92658

*Expert Committee*

We have examined the enclosed item submitted to PSE, of which an image is shown below, and are of the opinion that:

Cat No.

Issue

Denom.

Color

Scott 11A

1852

3c

Brownish carmine

GRADE: XF 90J, Used

"It is genuine used."



*Michael*  
For The Expert Committee

THIS CERTIFICATE IS PRINTED ON WATERMARKED PAPER AND IS NOT VALID WITHOUT WATERMARK





No. 01246778 1/27/2012



**Professional Stamp Experts**  
P.O. Box 6170, Newport Beach, CA 92658

*Expert Committee*

We have examined the enclosed item submitted to PSE, of which an image is shown below, and are of the opinion that:

Cat No.	Issue	Denom.	Color
Scott 11 (USD 4)	1856	3c	Rose red

**GRADE: XF-Sup 95, Used**

"it is genuine used."



*Ed Nicholas*  
For The Expert Committee



No. 01010363 5/12/2005



**Professional Stamp Experts**  
P.O. Box 6170, Newport Beach, CA 92658

*Expert Committee*

We have examined the enclosed item submitted to PSE, of which an image is shown below, and are of the opinion that:

Cat #	Issue	Denom.	Color
US#11	1857	3c	Claret

"it is genuine used, with a PAID in grid cancel."



*William A. Fite*  
For The Expert Committee