

Classic Luxembourg

From the Estate of Gary H. Houser



Sale 1069
May 14, 2014

INTERNATIONAL
Robert A. Siegel
IN ASSOCIATION WITH CHARLES F. SHREVE

Sale 1069— Wednesday, May 14, 2014

Classic Luxembourg From the Estate of Gary H. Houser

Live auction to be held at Siegel Auction Galleries,
60 East 56th Street (Park/Madison), 4th Floor, New York City

Lots are sold subject to a 15% buyer's premium and
any applicable sales tax (or customs duty for non-U.S. buyers)

All lots are offered without reserves



Pre-Sale Viewing:

Monday, May 12, 10am-4pm

Tuesday, May 13, 10am-4pm

Additional viewing, including the weekend of May 10-11, available by appointment

I N T E R N A T I O N A L

Robert A. Siegel

IN ASSOCIATION WITH CHARLES F. SHREVE

60 EAST 56TH STREET, 4TH FLOOR, NEW YORK, N.Y. 10022

Phone (212) 753-6421 • Fax (212) 753-6429 • E-mail: stamps@siegelauctions.com

Catalogues, internet bidding, resources, archives and the Siegel Encyclopedia at
siegelauctions.com



INTERNATIONAL
Robert A. Siegel
 IN ASSOCIATION WITH CHARLES F. SHREVE

60 EAST 56TH STREET, 4TH FLOOR, NEW YORK, N.Y. 10022
 Phone (212) 753-6421 • Fax (212) 753-6429 • E-mail: stamps@siegelauctions.com
siegelauctions.com



Scott R. Trepel
 President
 strepel
 @siegelauctions.com



John P. Zuckerman
 Senior Vice President
 jzuckerman
 @siegelauctions.com



Corey Long
 Vice President
 clong
 @siegelauctions.com



Starr Tucker-Ortega
 Vice President
 stamps
 @siegelauctions.com



Laura Melvin Kaplan
 Bids and Inquiries
 laura
 @siegelauctions.com



Charles F. Shreve
 Siegel International
 charles
 @siegelauctions.com



Chris Anderson
 Siegel International
 chris
 @siegelauctions.com



Andrew Titley
 Siegel International
 andrew
 @siegelauctions.com

Scott R. Trepel Principal Auctioneer (licensed by NYC Dept. of Consumer Affairs, #795952)

Nathaniel Estes Catalogue and Digital Production

Information for Bidders

Bidding

The following means are available for placing bids:

- 1) **Attending the Live Auction in Person:** All bidders must register for a paddle, and new bidders must provide references at least three business days in advance of the sale.
- 2) **Live Internet Bidding:** Instructions for participating as a Live Internet Bidder are provided on the page opposite.
- 3) **Phone Bidding:** Bidders can be connected to the sale by phone and bid through a member of staff. Requests for phone bidding are subject to approval (please contact our office at least 24 hours before the sale). A signed Bid Form is required.
- 4) **Absentee Bids.** All bids received in advance of the sale, either by mail, fax, phone, e-mail or internet, are Absentee Bids, which instruct the auctioneer to bid up to a specific amount on one or more lots in the sale. Absentee Bids sent by phone, fax or e-mail should arrive at least one hour prior to the start of the sale session. Bids entered through Live Internet Bidding will be visible to the auctioneer during the sale. Written bids should be entered legibly on the Bid Form in the sale catalogue. E-mail and internet bids should be carefully typed and double-checked. All new bidders must provide references. We recommend calling or e-mailing to confirm that Absentee Bids sent by mail, fax or e-mail have been received and entered.

Pre-Sale Viewing

Subject to availability, certain lots (except group lots) can be sent to known clients for examination. Requests must be made no later than 7 days prior to the sale. Lots must be returned on the day received. Postage/insurance costs will be invoiced.

In addition to regular viewing, clients may view lots by appointment. Our staff will be pleased to answer questions or provide additional information about lots.

Expert Certification

Individual items offered without a certificate dated within the past five years may be purchased subject to independent certification of genuineness and our description. **Please refer to the Conditions of Sale and Grading Terms for policies governing certification.**

Shipping and Delivery

Procedures and charges for shipping lots are printed on the back of the Bid Form. **Bidders are responsible for all prescribed shipping charges and any applicable sales tax or customs duties.**

Price Realized

Prices realized are sent with each invoice. Bidders with e-mail will receive a Bid Results report after the sale. Session results are posted immediately to **siegelauctions.com**

Live Internet Bidding at Siegel Auctions

BIDDING FROM YOUR COMPUTER LETS YOU BE PART OF THE LIVE AUCTION FROM ANYWHERE IN THE WORLD!

There's **NO SUBSTITUTE** for following the auction in real time.
Live Internet Bidding lets you bid and buy as though you were right there in the saleroom.
And it's easy.

This step-by-step guide will instruct you how to register, set your browser and use the bidding interface.

Start by following the simple steps to become a registered Live Internet Bidder.
Once you've been approved for bidding, you can listen to the auction and place bids with the click of a mouse.

Registering with STAMP AUCTION NETWORK & SIEGEL AUCTION GALLERIES

Live Internet Bidding is managed by Stamp Auction Network (SAN).
To bid, you must be registered and approved by *both* SAN and Siegel.
To decide what you need to do, choose the description below that best fits you.



I've already registered with SAN and have been approved by Siegel for internet bidding.

I'm a Siegel client, but I'm not registered with SAN.

Go to stampauctionnetwork.com/siegel and click on "Register" at the top. Check the box for Robert A. Siegel Auction Galleries (under "R") and submit the form, indicating you are a Siegel client. Once registered at SAN, you're ready for internet bidding.

I've bid through SAN before, but this is the first time I've bid in a Siegel sale.

Then you just need to be approved by Siegel. Go to stampauctionnetwork.com/siegel and click on "Update Registration" at the top. Your SAN account information will be sent to us for approval (you might be asked for other trade references). Once approved by Siegel for bidding, you're ready for internet bidding.

I've never bid with Siegel, nor registered with SAN.

Go to stampauctionnetwork.com/siegel and click on "Register" at the top. Check the box for Robert A. Siegel Auction Galleries (under "R") and submit the form **with your trade references** (please, no family members or credit card companies as references). Once registered at SAN and approved by Siegel for bidding, you're ready for internet bidding.

Live Internet Bidding works by allowing registered bidders to observe and place bids.

Live Internet Bidding will work with any browser on both PC and Mac operating systems.

Before bidding by internet for the first time, we recommend finding a sale in progress and listening to the public broadcast or logging in as a registered bidder. This will help you develop a feel for the sale tempo and bidding interface.

Log on to the auction at stampauctionnetwork.com/siegel.

You can also log on at siegelauctions.com

When you're logged on as a Live Internet Bidder, the bidding interface shows a photo and description of the lot, the current bid (and your bidding status), options for placing competitive bids and buttons with bid increments.

- After you click on a bid amount, the auctioneer is immediately notified of your bid.
- Retracting a bid is usually not acceptable, so please bid carefully.
- If you bid and then decide to stop, the "Pass" button will tell the auctioneer you are no longer bidding.
- You can send messages to the auctioneer (for example, a request for extension).
- You can track prior realizations from the bidding screen.



"System Down" or "Lost Connection" events do occasionally happen.

If you have any problems with Live Internet Bidding please call **212-753-6421** for immediate assistance.

Conditions of Sale (please read carefully before bidding)

The property described in this catalogue will be offered at public auction by Robert A. Siegel Auction Galleries, Inc. ("Galleries") on behalf of various consignors and itself or affiliated companies. By bidding on any lot, whether directly or by or through an agent, in person, or by telephone, facsimile or any other means, the bidder acknowledges and agrees to all of the following Conditions of Sale.

1. The highest bidder acknowledged by the auctioneer shall be the buyer. The term "final bid" means the last bid acknowledged by the auctioneer, which is normally the highest bid offered. **The purchase price payable by the buyer will be the sum of the final bid and a commission of 15% of the final bid ("buyer's premium"), together with any sales tax, use tax or customs duties due on the sale.**

2. The auctioneer has the right to reject any bid, to advance the bidding at his discretion and, in the event of a dispute between bidders, to determine the successful bidder, to continue the bidding or to reoffer and resell the lot in dispute. The Galleries' record of the final sale shall be conclusive.

3. All bids are per numbered lot in the catalogue unless otherwise announced by the auctioneer at the time of sale. The right is reserved to group two or more lots, to withdraw any lot or lots from the sale, or to act on behalf of the seller. The Galleries will execute bidding instructions on behalf of clients, but will not be responsible for the failure to execute such bids or for any errors in the execution of such bids.

4. Lots with numbers followed by the symbol ° are offered subject to a confidential minimum bid ("reserve"), below which the lot will not be sold. The absence of the symbol ° means that the lot is offered without a reserve. If there is no reserve, the auctioneer has sole discretion to establish a minimum opening bid and may refuse an offer of less than half of the published estimate. Any lot that does not reach its reserve or opening bid requested by the auctioneer will be announced as "passed" and excluded from the prices realized lists after the sale. The Galleries may have a direct or indirect ownership interest in any or all lots in the sale resulting from an advance of monies or goods-in-trade or a guarantee of minimum net proceeds made by the Galleries to the seller.

5. Subject to the exclusions listed in 5(A), the Galleries will accept the return of lots which have been misidentified or which have obvious faults that were present when the lot was in the Galleries' custody, but not so noted in the lot description. **All disputed lots must be received by the Galleries intact with the original packing material within 5 days of delivery to the buyer but no later than 30 days from the sale date. (5A) EXCLUSIONS: The following lots may not be returned for any reason: lots containing 10 or more items; lots from buyers who registered for the pre-sale exhibition or received lots by postal viewing, thereby having had the opportunity to inspect them before the sale; any lot described with "faults," "defects" or a specific fault may not be returned because of any secondary fault. Photographed lots may not be returned because of centering, margins, short/nibbed perforations or other factors shown in the illustrations. Lots may not be returned for any of the following reasons: the color of the item does not match the color reproduction in the sale catalogue or website listing; the description contains inaccurate information about the quantity known or reported; or a certification service grades a stamp lower than the grade stated in the description.**

6. Successful bidders, unless they have established credit with the Galleries prior to the sale, must make payment in full before the lots will be delivered. Buyers not known to the Galleries must make payment in full within 3 days from the date of sale. **The Galleries retains the right to demand a cash deposit from anyone prior to bidder registration and/or to demand payment at the time the lot is knocked down to the highest bidder, for any reason whatsoever.** In the event that any buyer refuses or fails to make payment in cash for any lot at the time it is knocked down to him, the auctioneer reserves the right to reoffer the lot immediately for sale to the highest bidder. **Credit cards (Visa, Mastercard and Discover only) can be accepted as payment but will be subject to a 3% Convenience**

Fee, which will be added to the total of the entire invoice (including hammer price, buyer's premium, shipping and transit insurance charges and any applicable taxes).

7. If the purchase price has not been paid within the time limit specified above, nor lots taken up within 7 days from the date of sale, the lots will be resold by whatever means deemed appropriate by the Galleries, and any loss incurred from resale will be charged to the defaulting buyer. Any account more than 30 days in arrears will be subject to a late payment charge of 1½% per month as long as the account remains in arrears. Any expenses incurred in securing payment from delinquent accounts will be charged to the defaulter. A fee of \$250.00 per check will be charged for each check returned for insufficient funds.

8. All lots are sold as genuine. **Any lot accompanied by a certificate issued by The Philatelic Foundation, British Philatelic Association, Royal Philatelic Society of London or any other authority recognized by the A.I.E.P. in a specific area of expertise, and dated within 5 years of the sale date, is sold "as is" and in accordance with the description on the certificate. Such lots may not be returned for any reason, including but not limited to a contrary certificate of opinion.** Buyers who wish to obtain a certificate for any item that does not have a certificate (dated as above) may do so, provided that the following conditions are met: (1) the purchase price must be paid in full, (2) the item must be submitted to an acceptable expertizing committee with a properly executed application form within 21 days of the sale, (3) a copy of the application form must be given to the Galleries, (4) in the event that an adverse opinion is received, the Galleries retain the right to resubmit the item on the buyer's behalf for reconsideration, without time limit or other restrictions, (5) unless written notification to the contrary is received, items submitted for certification will be considered cleared 90 days from the date of sale, and (6) in the event any item is determined to be "not as described", the buyer will be refunded the purchase price and the certification fee up to \$600.00 unless otherwise agreed.

9. Until paid for in full, all lots remain the property of the Galleries on behalf of the seller.

10. Agents executing bids on behalf of clients will be held responsible for all purchases made on behalf of clients unless otherwise arranged prior to the sale.

11. The buyer assumes all risk for delivery of purchased lots and agrees to pay for prescribed shipping costs. Buyers outside the U.S. are responsible for all customs duties.

12. The bidder consents that any action or proceeding against it may be commenced and maintained in any court within the State of New York or in the United States District Court for the Southern District of New York, that the courts of the State of New York and United States District Court for the Southern District of New York shall have jurisdiction with respect to the subject matter hereof and the person of the bidder. The bidder agrees not to assert any defense to any action or proceeding initiated by Galleries based upon improper venue or inconvenient forum. The bidder agrees that any action brought by the bidder shall be commenced and maintained only in a Federal Court in the United States District Court for the Southern District of New York or the State Court in the county in which Galleries has its principal place of business in New York. The bidder agrees not to use a public conflict resolution service and not to use any form of social media to publish comments or information about the Galleries and its employees which might harm the Galleries' reputation or business. These Terms and Conditions shall be governed by and construed in accordance with the substantive laws of the State of New York.

SCOTT R. TREPEL, Principal Auctioneer
Auctioneer's License No. 795952
N.Y.C. Department of Consumer Affairs
80 Lafayette Street, New York, N.Y. 10013
Telephone (212) 577-0111

Revised 4/2014

Grades, Abbreviations and Values Used in Descriptions

Grades and Centering

Our descriptions contain detailed information and observations about each item's condition. We have also assigned grades to stamps and covers, which reflect our subjective assessment. For stamps, the margin width, centering and gum are described and graded according to generally-accepted standards (an approximate correlation to numeric grades is provided at right). Although we believe our grades are accurate, they are not always exactly aligned with third-party grading terms or standards for all issues. **A lot may not be returned because a certification service grades a stamp lower than the grade stated in the description. Information from the P.S.E. Stamp Market Quarterly and P.S.E. Population Report™ is the most current available, but lots may not be returned due to errors or changes in statistics or data.**

Extremely Fine Gem (90-100): The term "Gem" describes condition that is the finest possible for the issue. This term is equivalent to "Superb" used by grading services.







Extremely Fine (80-90): Exceptionally large/wide margins or near perfect centering.

Very Fine (70-85): Normal-size margins for the issue and well-centered with the design a bit closer to one side. "Very Fine and choice" applies to stamps that have desirable traits such as rich color, sharp impression, freshness or clarity of cancel.

Fine (60-70): Smaller than usual margins or noticeably off center. Pre-1890 issues may have the design touched in places.

Very Good (below 60): Attractive appearance, but margins or perforations cut into the design.

Guide to Gum Condition

Gum Categories:	MINT N.H.	ORIGINAL GUM (O.G.)				NO GUM
						
	Mint Never Hinged <i>Free from any disturbance</i>	Lightly Hinged <i>Faint impression of a removed hinge over a small area</i>	Hinge Mark or Remnant <i>Prominent hinged spot with part or all of the hinge remaining</i>	Part o.g. <i>Approximately half or more of the gum intact</i>	Small part o.g. <i>Approximately less than half of the gum intact</i>	No gum <i>Only if issued with gum</i>
Catalogue Symbol:	★ ★	★	★	★	★	(★)
PRE-1890 ISSUES	<i>Pre-1890 stamps in these categories trade at a premium over Scott value</i>			Scott Value for "O.G."		Scott "No Gum" Values thru No. 218
1890-1935 ISSUES	Scott "Never Hinged" Values for Nos. 219-771	Scott Value for "O.G." (Actual value will be affected by the degree of hinging)		Disturbed Original Gum: Gum showing noticeable effects of humidity, climate or hinging over more than half of the gum. The significance of gum disturbance in valuing a stamp in any of the Original Gum categories depends on the degree of disturbance, the rarity and normal gum condition of the issue and other variables affecting quality. For example, stamps issued in tropical climates are expected to have some gum disturbance due to humidity, and such condition is not considered a negative factor in pricing.		
1935 TO DATE	Scott Value for "Unused"					

Covers

Minor nicks, short edge tears, flap tears and slight reduction at one side are normal conditions for 19th century envelopes. Folded letters should be expected to have at least one file fold. Light cleaning of covers and small mends along the edges are accepted forms of conservation. Unusual covers may have a common stamp with a slight crease or tiny tear. **These flaws exist in virtually all 19th century covers and are not always described. They are not grounds for return.**

Catalogue Values and Estimates

Unless otherwise noted, the currently available *Scott Catalogue* values are quoted in dollars with a decimal point. Other catalogues are often used for foreign countries or specialized areas and are referred to by their common name: *Stanley Gibbons* (SG), *Dietz*, *American Air Mail Catalogue* (AAMC), *Michel*, *Zumstein*, *Facit*, etc. Estimates are indicated with an "E." and reflect our conservative valuation in dollars. Reserves will never exceed the low end of the estimate range; they will sometimes exceed Scott Catalogue value for stamps in Extremely Fine condition.

Because of certain pricing inconsistencies in the *Scott Catalogue*—for example, blocks that have no gum, the absence of premiums for Mint N.H. items, etc.—we cannot guarantee the accuracy of values quoted for multiples, specialized items and collection lots. We generally try to be conservative, but buyers may not return a lot because of a discrepancy in catalogue value due to Scott pricing inconsistencies.

Symbols and Abbreviations (see chart above for gum symbols)

⊞ Block	E Essay	pmk. Postmark	No. Scott Catalogue Number
⊞ Cover	P Proof	cds Circular Datestamp	hs Handstamp
FC Fancy Cancel	TC Trial Color Proof	var. Variety	ms. Manuscript



NOTICE TO BUYERS

Robert A. Siegel Auction Galleries, Inc. and Robert A. Siegel International are pleased to announce that we can now accept credit cards as payment for purchases made in our auctions, subject to a 3% Convenience Fee.

Only VISA, MasterCard and Discover cards can be accepted. Convenience Fee will be added to the total of the entire invoice (including hammer price, buyer's premium, shipping and transit insurance charges and any applicable taxes).

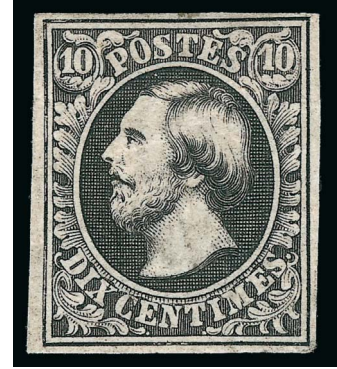
We believe our clients, particularly those living outside of the United States, will find this to be an especially convenient way to pay for their auction purchases, without having to get international currency drafts or make wire transfer payments. For assistance with a credit card payment please call our New York City office at 212-753-6421.

MORNING SESSION (LOTS 2001-2078)
 WEDNESDAY, MAY 14, 2014, AT 10:30 A.M.

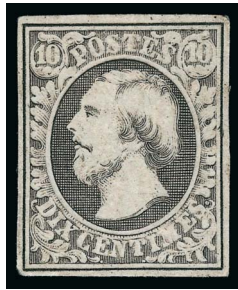
CLASSIC LUXEMBOURG FROM
 THE ESTATE OF GARY H. HOUSER

1852-59 FIRST ISSUE UNUSED SINGLES AND MULTIPLES

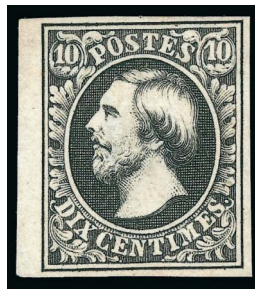
- 2001 ★ **1852-59, 10c Gray Black (1; Michel 1d; Prefix 1).** Full original gum which is rarely encountered on stamps of the first issue of Luxembourg, h.r., distinctive “deep black velvet color”, sharp impression and quite fresh overall, minor natural gum wrinkle, Very Fine, the first original gum example of Luxembourg No. 1 we have ever offered in our auctions..... 4,750.00



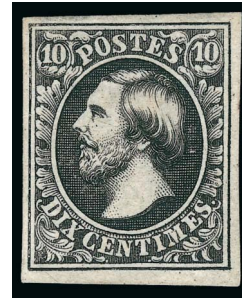
2001



2002



2003



2004

- 2002 (★) **1852-59, 10c Gray Black (1; Michel 1d; Prefix 1).** Unused (no gum as is almost always the case), from a very late printing (perhaps the 10th printing), resulting in distinctive light color and impression, four well balanced margins, Very Fine, signed A. Diena and Ferchenbauer, with 1981 Demuth certificate, ex Seligson..... 2,850.00
- 2003 (★) **1852-59, 10c Greenish Black (1a; Michel 1b; Prefix 1b).** Unused (no gum as is almost always the case), ample to very large margins all around, incl. a partial sheet margin at left (sheet margins on these classics are seldom encountered), strong color and a crisp impression, small thin spot, Extremely Fine appearance..... 3,000.00
- 2004 (★) **1852-59, 10c Intense Black (1b; Michel 1a; Prefix 1e).** Unused (no gum as is almost always the case), four large to very large margins, proof-like color and impression, Very Fine, an exceptionally choice example of this elusive shade..... 3,650.00

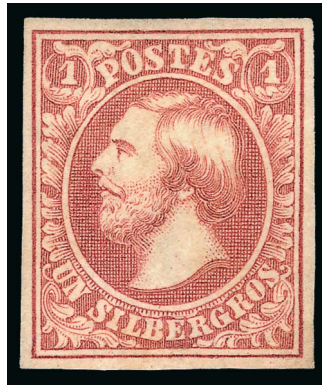


2005

- 2005 (★) **1852-59, 10c Intense Black (1b; Michel 1a; Prefix 1c).** Horizontal pair, unused (no gum as is almost always the case), close at top to mostly full margins, exceptionally deep color and a highly detailed impression

FINE. BELIEVED TO BE THE ONLY KNOWN UNUSED PAIR OF THE 10-CENTIMES FIRST ISSUE IN THE INTENSE BLACK SHADE.

Ex Del Puente. With 1970 F.D.S.P.L. certificate. Catalogued as two no gum unused singles 7,300.00

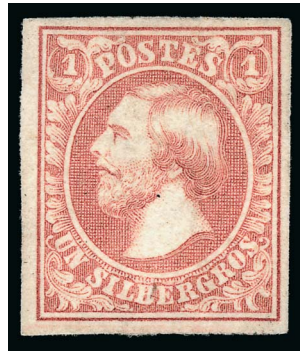


2006

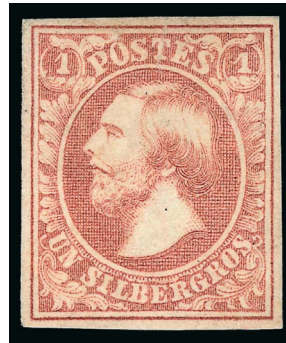
2006 ★ **1852-59, 1sg Red Brown (2; Michel 2c; Prifix 2).** Nearly full original gum, with a light h.r., four large and well balanced margins, exceptionally bright color that in past auction descriptions has been called “dark flesh”, crisp detailed impression

EXTREMELY FINE. WITHOUT QUESTION, THIS LOVELY STAMP IS AMONG THE FINEST AVAILABLE ORIGINAL GUM EXAMPLES OF THE ONE-SILBERGROSCHEN FIRST ISSUE. STAMPS STILL RETAINING THEIR ORIGINAL GUM ARE QUITE RARE, AND ARE ESPECIALLY DESIRABLE IN THIS CHOICE CONDITION.

Ex Seligson. Demuth certificate no longer accompanies which has been lost in the intervening thirty years 3,250.00



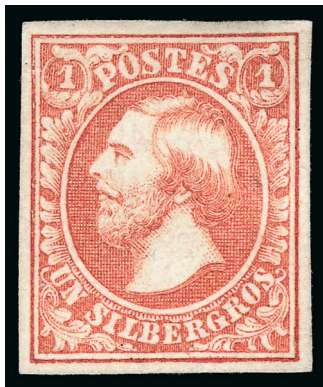
2007



2008

2007 (★) **1852-59, 1sg Red Brown (2; Michel 2c; Prifix 2).** Unused (no gum as is almost always the case), four large to very large margins, bright fresh color and a sharp impression, just the faintest trace of a thin spot, Extremely Fine appearance 1,950.00

2008 ★ **1852-59, 1sg Carmine Rose (3a; Michel 7; Prifix 2h).** Full original gum, mild h.r., four full and well balanced margins, lovely bright color and impression, trivial natural paper wrinkle mentioned for accuracy only, Very Fine, choice original gum examples of the first imperforate classic stamps of Luxembourg are true rarities, signed Roig ... 3,250.00



2009

2009 (★) **1852-59, 1sg Orange Red (3b; Michel 2d; Prifix 2e).** Unused (no gum as is almost always the case), stunning orange red color and an especially detailed impression on bright paper, four uniformly large margins, Extremely Fine, a terribly scarce unused stamp in this choice condition 1,950.00

10-CENTIMES—USED EXAMPLES

- 2010 **1852-59, 10c Gray black, Double Impression (1 var; Michel 1d; Prifix 1DD).** Used, light strike of nine-bar rimless grid cancel, full to large margins all around, bit close at bottom left corner, two distinct impressions of the design
- VERY FINE. A MOST REMARKABLE DOUBLE IMPRESSION EXAMPLE OF THE FIRST ISSUE OF LUXEMBOURG AND A HIGHLY IMPORTANT PIECE FOR THE SERIOUS EXHIBITOR OR COLLECTOR OF CLASSIC LUXEMBOURG. QUITE POSSIBLY UNIQUE.
- Ex Del Puente. With 1985 Demuth certificate.. E. 1,000-1,500



2010



2011



2012



2013

- 2011 **1852-59, 10c Gray Black (1; Michel 1d; Prifix 1).** Horizontal pair, beautifully cancelled by a scarce and distinctive “colosse 26 barres” grid postmark, four large and wonderfully balanced margins, fresh color and impression, faint fold between the stamps and the right stamp with small thin spot, none of which detract from this pair’s Extremely Fine appearance, ex Del Puente E. 300-400
- 2012 **1852-59, 10c Gray Black (1; Michel 1d; Prifix 1).** Horizontal strip of four, cancelled by three neat strikes of the very scarce **nine-bar rimless grid postmark in blue, far right stamp with small part of a black cancel** as well, ample margins at left and at top, large at right and at bottom, rich color, Very Fine, a particularly desirable used strip of four with an elusive postmark in blue, ex Del Puente, signed Willy Balasse and with 1985 Demuth certificate..... E. 750-1,000
- 2013 **1852-59, 10c Gray Black (1; Michel 1d; Prifix 1).** Horizontal strip of four, with the second stamp in the strip displaying the **largest recut (no. XII) found on the Ten Centimes First Issue** (dots strongly accented on the cheek and on the front and back of the neck), three full to large margins, margin at left close but clear, neat light strikes of nine-bar rimless grid postmark, Very Fine, ex Del Puente, signed Richter and with 1985 Demuth certificate..... E. 500-750

2014



2014

1852-59, 10c Intense Black, Inverted Watermark (1b var; Michel 1a var; Prefix 1e var). Horizontal strip of four, each stamp displaying a very scarce inverted watermark, incredibly well margined all around, strong color and impression, lightly canceled by neat rimless grid postmarks
EXTREMELY FINE IN EVERY REGARD. A MAGNIFICENT MULTIPLE OF THE SELDOM SEEN INVERTED WATERMARK VARIETY ON THE 10-CENTIMES FIRST ISSUE. AN ESSENTIAL EXHIBITION PIECE THAT IS LIKELY THE LARGEST KNOWN MULTIPLE.

Ex Del Puente. With 1960 F.D.S.P.L. certificate..... E. 1,500-2,000

2015

1852-59, 10c Intense Black (1b; Michel 1a; Prefix 1c). Vertical strip of four, margins range from full to very large, strikingly intense color and impression, crisp bold strikes of rimless grid postmarks, Very Fine, strips of four, which catalog \$1,250.00 in Scott are quite scarce, but especially so in a vertical format, ex Del Puente

E. 400-500



2015



2016

2016

1852-59, 10c Gray Black (1; Michel 1d; Prefix 1). Horizontal strip of four, plus an additional single example, all used on a small dark blue piece and tied by distinctive **three ring cancel with dot in the center of Clervaux**, both the strip and the single with mostly ample to very large margins, the strip just barely touching on two stamps, strong color and impressions on all the stamps, Very Fine, an attractive piece, ex Del Puente, signed F.D.S.P.L.

E. 300-400

2017 ▣

1852-59, 10c Gray Black (1; Michel 1d; Prefix 1). Block of four, with full to extra large margins all around, including a **sizable portion of the sheet margin at right**, distinctive light gray color and impression of a late printing (1858), light unobtrusive strikes of nine-bar rimless grid postmarks, top left stamp with trivial thin speck not mentioned on accompanying certificate

EXTREMELY FINE. AN ABSOLUTELY STUNNING USED BLOCK OF FOUR OF THE 10-CENTIMES FIRST ISSUE, IN THE FINEST CONDITION IMAGINABLE. ANY USED BLOCK OF THIS ISSUE IS AN IMPORTANT RARITY, BUT ONE IN THIS EXCEPTIONAL QUALITY, PARTICULARLY DISPLAYING A SHEET MARGIN AT RIGHT, IS ONE OF THE MOST IMPORTANT PIECES OF THE ISSUE. AN ESSENTIAL ITEM FOR A GOLD MEDAL COLLECTION OF CLASSIC LUXEMBOURG.

Ex Del Puente. With 1985 Demuth certificate. Catalogues as a block of four in Scott at \$6,000.00

E. 3,000-4,000



2017



2018

2018 **1852-59, 10c Intense Black (1b; Michel 1c; Prifix 1e).** Horizontal strip of five, with a sixth stamp attached by hinge at right which was used at the same time, both the strip and the single possess full to large margins, with only the margin at left just touching design, deep color and a well incised impression, lightly canceled with nine-bar rimless grids, trivial corner crease at top left of first stamp in the strip, overall Very Fine, an eye-catching multiple perfect for exhibition, ex Del Puente, with 1985 Demuth certificate E. 750-1,000



2019

2019 **1852-59, 10c Intense Black (1b; Michel 1c; Prifix 1e).** Horizontal strip of seven, cancelled by four neat strikes of distinctive three ring cancel with dot in the center of Grevenmacher, strip with huge margin at top showing bits of several adjoining stamps, margin at right ranging from just clear to large, just touching or slightly cutting design at left and bottom margins, Fine, used multiples of this size are quite rare, ex Del Puente..... E. 400-500



2020

2020 **1852-59, 10c Gray Black (1; Michel 1d; Prifix 1).** Block of eight (4x2), lightly cancelled by multiple strikes of nine-bar rimless grid, full margins practically all around, except left margin just touching/cutting design, vertical crease between the two blocks of four running along right frameline of left block (just breaking the paper at a few tiny points), slight repair between the two stamps in the first vertical pair, the right block of four being essentially fault free

FINE APPEARANCE. AN ENORMOUSLY RARE USED MULTIPLE OF THE 10-CENTIMES FIRST ISSUE, BEING AMONG THE LARGER KNOWN MUTIPLES OF THIS STAMP.

Ex Del Puente. With 1985 Demuth certificate. Catalogues \$12,000.00 in Scott as two used blocks of four E. 2,000-3,000

ONE-SILBERGROSCHEN—USED EXAMPLES



2021



2022

- 2021 **1852-59, 1sg Blood Red (2c; Michel 2a; Prifix 2a).** Used, four large to very large margins, intense color in the scarce and distinctive Blood Red shade of 1852, beautifully cancelled by a central strike of “**colosse 26 barres**” grid postmark, Extremely Fine, a gem example in every regard, ex Del Puente, signed F.D.S.P.L..... E. 300-400
- 2022 **1852-59, 1sg Brown Red (2; Michel 2b; Prifix 2).** Vertical strip of three, possessing ample (at top right) to mostly very large margins all around, wonderfully rich color and impressions, tied to a small piece by three strikes of distinctive **three ring cancel with dot in the center of Clervaux**, with matching Clervaux double-ring circular datestamp to right, Very Fine, an eye-appealing and scarce strip of three, ex Del Puente, with 1985 Demuth certificate E. 300-400



2023

- 2023 田 **1852-59, 1sg Orange Red (2b; Michel 2d; Prifix 2e).** Block of four, used, canceled by light strikes of nine-bar rimless grid postmarks, featuring large margins nearly all around and gorgeous rich color and a highly detailed impression on fresh paper, inconsequential thin spot between the two right stamps
- EXTREMELY FINE. A VERY RARE AND DESIRABLE USED BLOCK OF FOUR OF THE ONE-SILBERGROSCHEN FIRST ISSUE. ANY USED BLOCK OF THIS ISSUE IS SELDOM SEEN IN ANY QUALITY, LET ALONE IN THIS LOVELY PREMIUM CONDITION AND IN THE MORE ELUSIVE ORANGE RED SHADE OF 1854.
- Ex Del Puente. With 1985 Demuth certificate E. 3,000-4,000

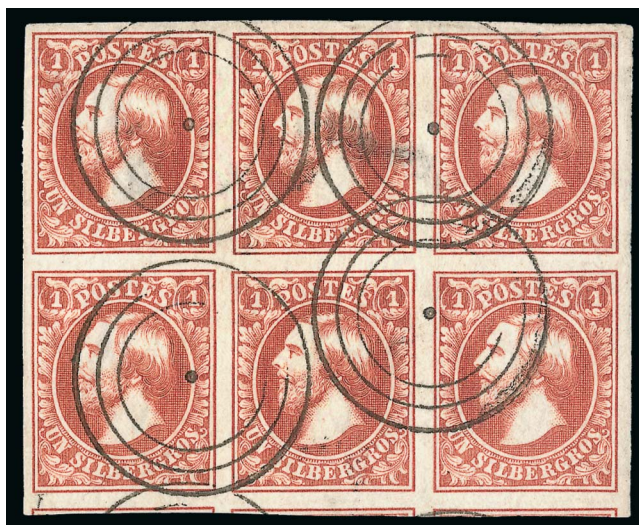


2024

2024 **1852-59, 1sg Flesh (2; Michel 2e; Prifix 2).** Horizontal strip of five, used, with three neat and light strikes of eight-bar rimless grid cancel of Echternach, attractive full margins at top and at bottom, ample at left, fourth margin at right close but clear, bright distinctive color specifically described on the accompanying certificate as “flesh” (in the family of light brown reds), proof-like impression as well

VERY FINE. AN EXTREMELY SCARCE AND ATTRACTIVE USED MULTIPLE.

Ex Del Puente. With 1985 Demuth certificate E. 1,000-1,500



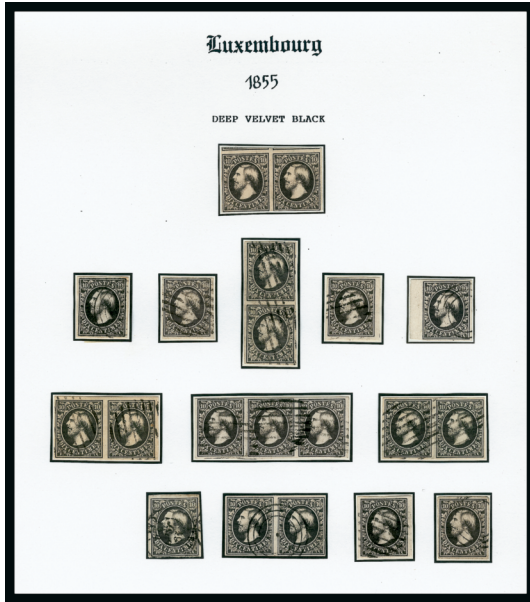
2025

2025 田 **1852-59, 1sg Brown Red (2; Michel 2a; Prifix 2).** Block of six (3x2), used, beautifully cancelled with four choice strikes of distinctive three ring cancel with dot in the center of Luxembourg, incredibly well-margined, with large to huge margins all around, incl. showing portions of three adjoining stamps at bottom, contributing to this multiple's appeal is its truly proof-like color and impression on wonderfully fresh paper

SUPERB IN EVERY REGARD. WITHOUT QUESTION, THIS SPECTACULAR AND RARE USED BLOCK OF SIX OF THE ONE-SILBERGROSCHEN IS IN THE FINEST CONDITION ATTAINABLE FOR ANY USED MULTIPLE OF THE FIRST TWO IMPERFORATE ISSUES OF LUXEMBOURG. ONE OF THE GEMS OF LUXEMBOURG PHILATELY.

Ex Del Puente. Signed F.D.S.P.L. and with 1985 Demuth certificate..... E. 5,000-7,500

THE EXCEPTIONAL BALANCE OF THE 1852-59 FIRST ISSUE

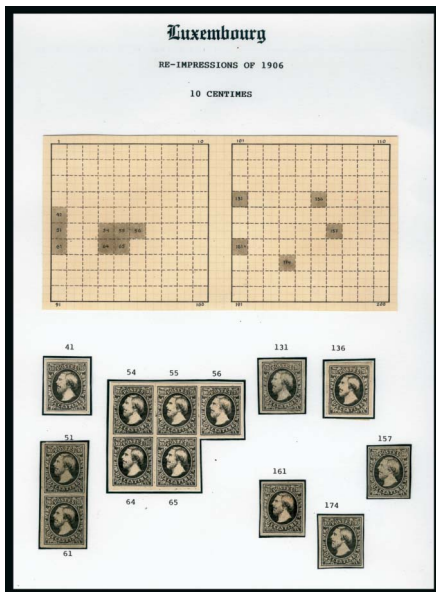


2026EX

2026

The Outstanding Balance of the Gary H. Houser Collection of 1852-59 10c and 1sg First Imperforate Issues of Luxembourg. A marvelous array of largely off-cover stamps (although a small handful of covers or fronts are included), the vast majority of which are neatly mounted on his exhibition pages and well annotated, of note are over 20 unused singles (and even a couple of pairs) of both values collected by their wide variety of shades, used items feature over 125 pieces including singles, pairs and a few strips of three collected for their shades, paper varieties, cancels and concluding with a nice range of re-touch varieties (both small and large), of particular importance is the overall condition found on most items, with four margin examples abounding, there are a few items with faults, but these are in the minority, overall Fine-Very Fine, an exceptional opportunity for the specialist, or for the collector seeking a new area of classic philately to collect, with this assemblage being a great jump start to building an important collection, For complete scans (6.2mb) of this lot, go to <http://www.siegelauctions.com/2013/1069/PDF/2026.pdf>.....(Photo Ex) E. 10,000-15,000

1906 RE-IMPRESSIONS OF THE 1852-59 FIRST ISSUES



2027

1906, 10c and 1sg Re-Impressions of the First Two Issues of Luxembourg (1R, 2R). A small specialized study on three album pages of the reprints produced in 1906, includes six singles, a pair and an impressive block of five of the 10c, and three singles and a pair of the 1sg, nearly all identified with plate positions, all with four margins, most without gum, but some noted with gum, collection also incl. a most unusual strip of four of the 10c printed in black from the original plates which were defaced in early 1906, overall Very Fine(Photo Ex) E. 750-1,000

2027EX

1852-59 FIRST ISSUE POSTAL HISTORY
 10 CENTIMES
 ARRANGED BY SIZE OF FRANKING



- 2028 ☒ **1852-59, 10c Intense Black (1b; Michel 1a; Prifix 1e).** Select quality single, with four large and well-balanced margins, in addition to deep rich color and impression, neatly tied on largely intact small folded cover by three-ring mute cancel addressed to Esch-sur-Alzette, bit of red arrival postmark showing in center, Extremely Fine, a very pretty cover, ex Del Puente..... E. 200-300
- 2029 ☒ **1852-59, 10c Intense Black (1b; Michel 1a; Prifix 1e).** Single example with deep intense color, margins ranging from close but clear to large, tied on small folded cover to Grevemacher by distinctive three-ring cancel with a dot in the center, matching “Frisange 15 III 1855” double circle Belgian type circular datestamp at top center of cover, matching “PD” handstamp nearby, Grevemacher backstamp, tiny insignificant flaw to stamp at top left, cover with central file fold, Very Fine, an extremely scarce usage, as it is believed that only two or three are known, ex Seligson, signed F.D.S.P.L. and with 1985 Demuth certificate E. 750-1,000
- 2030 ☒ **1852-59, 10c Gray Black (1; Michel 1d; Prifix 1).** Choice four-margin single, with strong color and impression, tied on petite cover by scarce double ring “Cleraux 23 Jan 1856” Belgian type circular datestamp, Very Fine, a lovely little cover, ex Del Puente E. 300-400
- 2031 ☒ **1852-59, 10c Gray Black (1; Michel 1d; Prifix 1).** Handsome single with four large margins and fresh color, tied on smaller narrow cover to Echternach by distinctive three-ring cancel with a dot in the center, matching double circle “Diekirch 20 Juin 58 (reading 52 in error)” French type circular datestamp at top right, Echternach arrival postmark on reverse, Very Fine, ex Del Puente E. 150-200
- 2032 ☒ **1852-59, 10c Gray Black (1; Michel 1d; Prifix 1).** Choice single with four large and well-balanced margins, tied on 1857 folded cover to Luxembourg by most unusual and scarce **three-ring circular cancel made up of dashes and with a dot in the center of Remich**, matching “Remich 12 VI 1857” double circle Belgian type circular datestamp at top right, along with small boxed “PD” handstamp, blue Luxembourg backstamp, small paper split to front panel of no consequence, Very Fine, certainly one of the more unusual cancels found on a First Issue cover, ex Seligson, with 1985 Demuth certificate..... E. 400-500



- 2033 **1852-59, 10c Gray Black (1; Michel 1d; Prifix 1).** Gem single with sheet margin at right, the other margins large to very large as well, tied on attractive cover front to Rousseau by scarce and distinctive circular “waffle” grid postmark of Frisange, matching “Frisange 9 VII 1858” double circle Belgian type circular datestamp at top left, along with small boxed “PD” handstamp, Extremely Fine, few First Issue covers are known with this cancellation, ex Del Puente, with 1985 Demuth certificate..... E. 400-500
- 2034 ☒ **1852-59, 10c Gray Black (1; Michel 1d; Prifix 1).** Handsome single with four large to huge margins, incl. showing small portions of adjoining stamps at left and at top, tied on petite local cover by distinctive three-ring cancel with a dot in the center, matching double circle “Diekirch 20 Janv 60” French type circular datestamp, backstamped Luxembourg, Very Fine, ex Del Puente ... E. 150-200
- 2035 ☒ **1852-59, 10c Gray Black (1; Michel 1d; Prifix 1).** Horizontal pair, three large and well-balanced margins, fourth at left close but clear, rich color and sharp impression, tied on attractive petite folded cover in a greenish color to Arlon by central strike of three-ring cancel with a dot in the center, matching double circle “Redange 22 IV 1856” Belgian type circular datestamp at top left which is wonderfully well struck, small boxed “PD” handstamp, Luxembourg backstamp, Very Fine, ex Seligson, with 1981 Demuth certificate E. 400-500
- 2036 ☒ **1852-59, 10c Gray Black (1; Michel 1d; Prifix 1).** Horizontal pair, large to very large margins all around, incl. a bit of a potential sheet margin at left, rich color, used on a small folded 1858 cover to Orlon and centrally cancelled with a light strike of a nine-bar rimless grid postmark, matching double circle “Larochette 22 Jan 58” French type circular datestamp at top center, with larger boxed “PD” handstamp, Luxembourg backstamp, Very Fine, a particularly choice and attractive First Issue cover, ex Del Puente..... E. 400-500
- 2037 ☒ **1852-59, 10c Greenish Black (1a; Michel 1b; Prifix 1b).** “L” shaped block of three, being a most uncommon format of franking on a slightly larger sized but most attractive cover to Belgium, the “block” has very large margins all around, except just a bit closer at top left and top right corners, deep luxuriant color and impressions, tied by three light strikes of distinctive three-ring cancel with a dot in the center, matching “Clervaux 29 XII 1852” double circle Belgian type circular datestamp, multiple transit and arrival markings on reverse both in red and black, Very Fine and choice, in addition to being a most unusual franking, this cover also represents and extremely early usage of the Greenish Black printings, ex Del Puente, with F.D.S.P.L. certificate..... E. 750-1,000
- 2038 ☒ **1852-59, 10c Greenish Black (1a; Michel 1b; Prifix 1b).** Vertical pair and a single, each with large to very large margins, as well as having deep rich colors, tied on a scarce petite folded 1853 forwarded cover by nine-bar rimless grid postmarks, traces of red postmarks on the front, as well as boxed “PD” handstamp, reverse displays four different transit and arrival postmarks including “Havelange 30 Nov 1853” circular datestamp, Very Fine, an especially attractive cover, ex Del Puente, signed Schwenn and W. Balasse E. 400-500



2039



2040

- 2039 ☒ **1852-59, 10c Greenish Black (1a; Michel 1b; Prefix 1b).** Vertical strip of three, with four large to very large margins and wonderfully rich color and impressions, tied on scarce folded cover **to London** by neat strikes of nine-bar rimless grid postmarks, “Luxembourg 13 Nov 54” double circle French type circular datestamp at bottom center, large boxed “PD” handstamp applied in error and crossed out by postal clerk, red transit and British arrival backstamps, small bit of one lettersheet leaf reduced on reverse, stamp lifted for examination and hinged back in its appropriate place, a Very Fine and exceedingly choice strip of three used to London, ex Del Puente..... E. 500-750
- 2040 ☒ **1852-59, 10c Greenish Black (1a; Michel 1b; Prefix 1b).** Vertical strip of three, ample to mostly very large margins all around, deep rich color and sharp impressions, tied on folded cover **to London** by light neat strikes of nine-bar rimless grid postmarks, “Luxembourg 29 Jul 1854” double circle French type circular datestamp at right, cover is endorsed in red and black manuscript that the postage is paid in full, red Luxembourg transit and red British arrival marking on reverse, cover with small tape stain at top center not affecting the strip, otherwise Very Fine E. 400-500



2041

- 2041 ☒ **1852-59, 10c Black (1; Michel 1a; Prefix 1).** Two horizontal pairs, tied to a lovely folded cover from Luxembourg **to Sarreguemines, France** by four light strikes of striking **green** three-ring cancel with a dot in the center, a similarly colored double oval agent's cachet on the reverse, two strikes of red “Luxembourg 18 Sep 52” circular datestamp at right (representing a very rare early usage) and a boxed “PD” handstamp also in red, Metz transit circular datestamp and Sarreguemines arrival marking on reverse, the two pairs each have full to large margins all around, except one pair with margin just touching at bottom
- VERY FINE. AN EXCEPTIONALLY ATTRACTIVE AND IMPORTANT 10-CENTIMES FIRST ISSUE COVER FOR SEVERAL REASONS. FIRST, THE USE OF TWO HANDSOME PAIRS AS THE COVER'S FRANKING IS DESIRABLE. SECOND, THE COLOR OF THE CANCELLATION IN GREEN IS EXTREMELY RARE. AND, THIRD, THIS POSTING IS ONLY THREE DAYS AFTER THE OFFICIAL FIRST DAY OF ISSUE, REPRESENTING A DESIRABLE EARLY USAGE.
- Ex Seligson. With 1981 Demuth certificate E. 1,500-2,000



2042



2043



2044

- 2042 ☒ **1852-59, 10c Black (1; Michel 1c; Prifix 1).** Horizontal pair and two singles, all with ample to mostly large margins and strong color (one single stamp with trivial tear at bottom), tied on small folded cover to Longwy by two neat strikes of three-ring cancel with a dot in the center, matching “Echternach 11 XII 1853” double circle Belgian type circular datestamp at right, small boxed “PD” handstamp nearby, Luxembourg transit and arrival circular datestamp on reverse, small cover flaws and traces of light foxing, still Fine for this scarce franking, ex Seligson, with 1981 Demuth certificate E. 400-500
- 2043 ☒ **1852-59, 10c Gray Black (1; Michel 1d; Prifix 1).** Two horizontal pairs, each with three large margins and a fourth cut a bit close, tied on greenish folded cover to Paris, France by light strikes of nine-bar rimless grid cancels, two strikes of small double circle “Luxembourg 2 Mars 58” French type datestamps at right, with larger boxed “PD” handstamp at bottom center, attractive small business sender’s boxed cachet in blue also at bottom, appropriate transit and arrival backstamps, Fine, an attractive and scarce franking E. 400-500
- 2044 ☒ **1852-59, 10c Gray Black (1; Michel 1d; Prifix 1).** Horizontal strip of three, plus a single, all with four ample to large margins and strong color and impressions, tied on a lovely folded letter to Paris, France by light strikes of nine-bar rimless grid cancels, perfect strike of matching double circle “Luxembourg 11 Mars 56” French type datestamp at left, large boxed “PD” handstamp at bottom right, red transit circular datestamp also nearby, transit and arrival backstamps, interesting contents from the Grand Duchess of Luxembourg Administration of Finance Office to the Commander of the Royal Office in Paris, Very Fine, an eye-appealing and scarce franking, ex Del Puente, with 1985 Demuth certificate E. 500-750



2045

- 2045 ☒ **1852-59, 10c Gray Black (1; Michel 1d; Prefix 1).** Horizontal strip of four, a gem quality strip with four large and well-balanced margins, as well as excellent color and impressions, tied on a folded tissue-paper cover from the International Bank of Luxembourg to **Paris, France**, light neat strikes of nine-bar rimless grid cancels, matching double circle "Luxembourg 5 Avril 57" French type datestamp at right, large boxed "PD" handstamp, with attractive petite boxed bank handstamp at bottom left, red transit circular datestamp also on the front of the cover, transit and arrival backstamps, strip has been lifted for examination and hinged back in place, cover with insignificant small piece missing just above addressee, still Very Fine and exceptionally choice, ex Del Puente.... E. 750-1,000



2046

- 2046 ☒ **1852-59, 10c Gray Black (1; Michel 1d; Prefix 1).** Horizontal strip of four, with three very large margins, fourth at left close but clear, outstanding color and impressions, tied on petite cover to **Paris, France** by light strikes of nine-bar grid cancels, as well as double circle "Luxembourg 5 Aout 56" French type datestamp, large boxed "PD" handstamp and a red transit circular datestamp at right, multiple transit and arrival postmarks on reverse, small tear at top of cover and multiple mounting hinges on reverse, overall Very Fine, quite a scarce franking as a strip of four on cover, ex Del Puente..... E. 750-1,000



2047

2047 ☒ **1852-59, 10c Gray Black (1; Michel 1d; Prifix 1).** Block of four, four large and well-balanced margins, fresh color, tied on a folded cover to **Lyon, France** by four neat strikes of nine-bar rimless grid cancels, matching double circle "Luxembourg 13 Mars 58" datestamp, large boxed "PD" handstamp and faint red transit circular datestamp also on the front of the cover, Paris transit and Lyon arrival circular datestamp on reverse, right vertical pair in the block affected by light horizontal file fold just breaking the paper at a few points in the block

VERY FINE AND CHOICE APPEARANCE. AN EXTREMELY RARE FRANKING OF A FOUR MARGIN 10-CENTIMES BLOCK OF FOUR, OF WHICH VERY FEW ARE KNOWN ON COVER.

Ex Del Puente. With a 1985 Demuth certificate. Scott catalogue value for a block of four on cover is \$10,000.00 E. 2,000-3,000

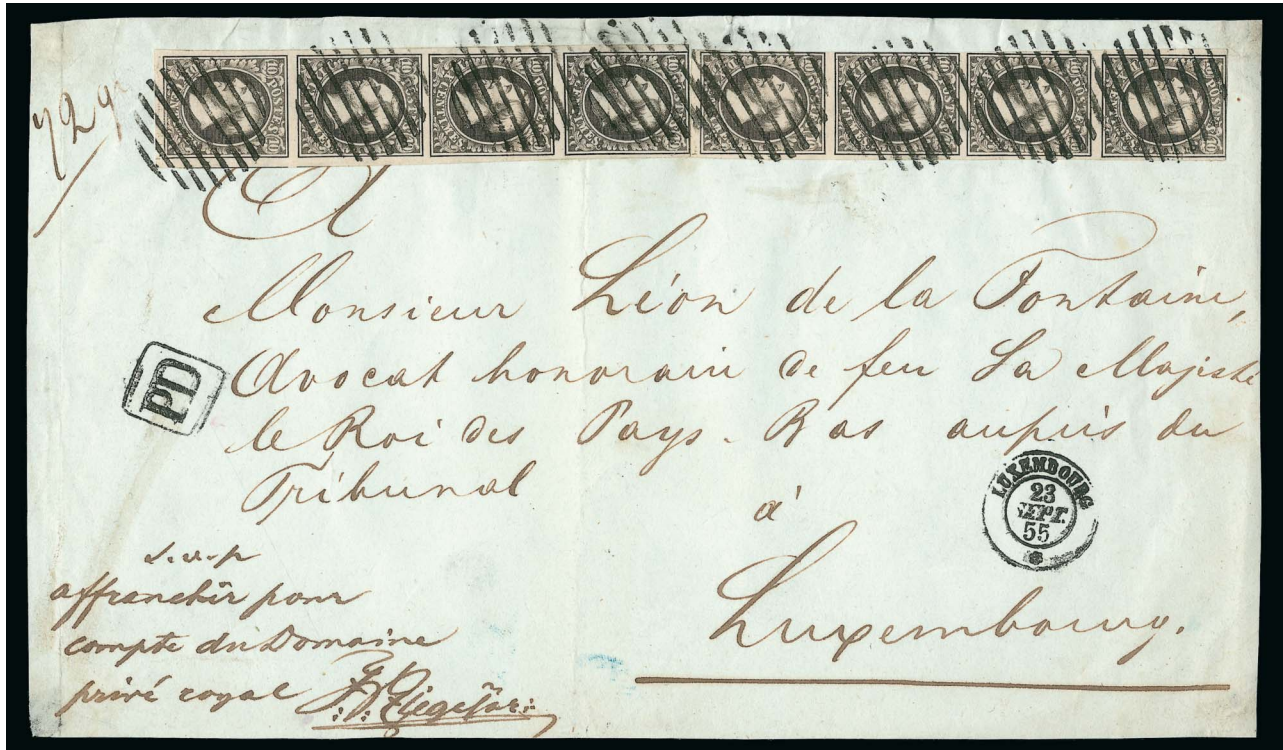


2048

2048 ☒ **1852-59, 10c Intense Black (1b; Michel 1a; Prifix 1e).** Vertical strip of six, large margin at right, ample at bottom, left and top margins close to just barely touching frameline at a few points, deep luxuriant color and impressions, tied on a relatively small folded cover to Diekirch by four strikes of double circle "Echternach 30 IV 1856" Belgian type postmarks, a most uncommon usage of the town postmark cancelling the stamps instead of the usual grid cancels, fifth strike at bottom of the cover, Luxembourg and Diekirch backstamps, trivial facial rub at left to sixth stamp in the strip, backflap reduced just a bit

FINE. A MOST IMPORTANT AND RARE FRANKING, WITH VERY FEW KNOWN OF THIS SIZE. OF PARTICULAR INTEREST AND DESIRABILITY IS THE USE OF THE TOWN POSTMARK TO CANCEL THE STAMPS IN LIEU OF THE TYPICAL NINE-BAR GRIDS.

Ex Del Puente. With 1985 Demuth certificate E. 3,000-4,000



2049

2049 **1852-59, 10c Black (1; Michel 1c; Prifix 1).** Two vertical strips of four (once forming a strip of eight), one strip with three very large margins and close at top, the other with large margins on two sides, cut close to just touching frameline at left and at top, deep rich color, tied on an attractive larger cover front by multiple strikes of nine-bar rimless grid cancels, used within Luxembourg and with choice strike of double circle "Luxembourg 23 Sept 55" French type datestamp, Large boxed "PD" handstamp, central vertical file fold just affecting slightly one stamp

FINE. A SHOWPIECE FRONT BEARING A REMARKABLE EIGHT STAMP FRANKING OF THE 10-CENTIMES FIRST ISSUE.

Ex Del Puente. With 1985 Demuth certificate E. 2,000-3,000



2050

2050 ☒ **1852-59, 10c Gray Black (1; Michel 1d; Prefix 1).** Vertical strip of four, horizontal strip of three and a single, each with four well-balanced margins and bright color, all tied on an opened out large portion of an 1859 folded letter to **New York** by light strikes of nine-bar rimless grid postmarks, matching double circle “Luxembourg 25 Feb” datestamp, with attractive oval carrier company cachet on the front, as well as red Luxembourg transit and New York Paid exchange circular datestamp also in red, large boxed “PD” handstamp, backflap with interesting large New York Custom House cachet in violet, cover reduced somewhat at left and removing left flap, the strip of four is affixed to the front of the cover, while the strip of three and the single are used on the reverse

VERY FINE. A REMARKABLE FIRST ISSUE COVER IN MANY RESPECTS. THE FRANKING OF EIGHT 10-CENTIMES STAMPS ON A SINGLE COVER IS QUITE RARE. IN ADDITION, THERE ARE VERY FEW FIRST ISSUE COVERS TO THE UNITED STATES (PERHAPS LESS THAN FIVE). AND, FINALLY, THE CHOICE HORIZONTAL STRIP OF THREE DISPLAYS THE LARGEST RECUT VARIETIES FOUND ON THIS STAMP (POSITIONS 7, 8 AND 9). ALL-IN-ALL, A COVER ESSENTIAL TO A GOLD-MEDAL EXHIBIT OF LUXEMBOURG.

Ex Del Puente. With 1985 Demuth certificate E. 2,000-3,000



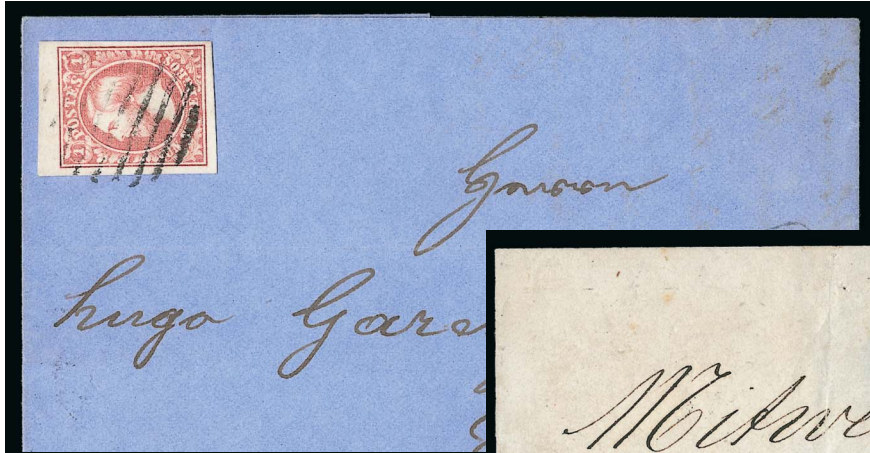
2051

2051 ☒ **1852-59, 10c Gray Black (1; Michel 1d; Prifix 1).** Two vertical strips of five, plus a horizontal pair, margins mostly ample to full, tied on a small registered folded cover to **Schaerbeck, Belgium** by multiples strikes of nine-bar rimless grid cancels, blue double circle Luxembourg French type circular datestamp (date unreadable) also ties one of the strips, partial boxed "PD" handstamp, "Charge" blue script handstamp near strip at top, the two strips are placed on the top and bottom of the cover, while the pair was placed on the reverse and has been opened out to display the pair, rounded corner on the bottom strip, file folds affect some stamps, other small cover flaws

FINE APPEARANCE. AN INCREDIBLY FRANKED COVER WITH NO LESS THAN TWELVE 10-CENTIMES STAMPS. A POSTAL HISTORY RARITY OF THE FIRST ISSUE.

Ex Del Puente. With 1985 Demuth certificate E. 3,000-4,000

ONE-SILBERGROSCHEN COVERS
ARRANGED BY SIZE OF FRANKING



2052



2053



2054

2052 ☒ **1852-59, 1sg Rose (3; Michel 2f; Prifix 2f).** Gem single, with four large to very large margins, incl. partial sheet margin at top (scarce thus), lovely bright color and impression on fresh paper, neatly tied on blued colored folded cover to Tier by single strike of rimless grid cancel, light strike of matching double circle “Luxembourg Nov 59” French type datestamp at bottom right, large boxed “PD” handstamp just above, Tier backstamp, Extremely Fine, a lovely cover, ex Del Puente..... E. 400-500

2053 ☒ **1852-59, 1sg Carmine Rose (3a; Michel 2f; Prifix 2h).** Four large to very large margins, excellent color and impression, tied on lovely neat folded cover to Trier by **distinctive Frisange circular “waffle” grid postmark used at the Bettembourg office**, choice perfect strike, with clear double circle “Bettembourg 26 Mars 60” French type datestamp at top right of cover, small boxed “PD” handstamp, various excellent strikes of transit and arrival postmarks on reverse

EXTREMELY FINE. THE FRISANGE POST OFFICE WAS TRANSFERRED TO BETTEMBOURG IN ABOUT AUGUST 1859. SINCE POSTAL USAGE OF THE ONE-SILBERGROSCHEN CEASED IN SEPTEMBER 1859, IT IS RARE TO SEE THIS STAMP USED WITH THE FRISANGE “DICE” CANCEL FROM BETTEMBOURG AT THIS LATE DATE (MARCH 26, 1860). AN IMPORTANT AND EYE-APPEALING COVER.

Ex Del Puente. With 1985 Demuth certificate E. 1,500-2,000

2054 ☒ **1852-59, 1sg Brown Red (2; Michel 2c; Prifix 2).** Horizontal pair, full to mostly large margins all around, strong rich color, neatly tied on folded letter by single strike of nine-bar rimless grid cancel, matching double circle “Luxembourg 12 Aout 57” French type datestamp at top right, large boxed “PD” handstamp, various transit and arrival postmarks on reverse, couple of faint gum toning specks in top margin of pair, still Very Fine, ex Del Puente E. 300-400



2055



2056



2057

- 2055 ☒ **1852-59, 1sg Brown Red (2; Michel 2c; Prifix 2).** Horizontal pair and a single, each with four large and well-balanced margins, deep rich color, tied on folded cover **to Berlin, Germany** by two light strikes of three ring cancel with a dot in the center **in green**, letter dated September 29, 1852 which represents an extremely early usage of these stamps which were issued only two weeks prior to this date, two backstamps, front of cover slightly aged, still Very Fine, an important and rare early use cover with cancellations in green, ex Del Puente E. 1,000-1,500
- 2056 ☒ **1852-59, 1sg Brown Red (2; Michel 2c; Prifix 2).** Vertical pair, with close to mostly full margins, plus a single with four large margins, incl. showing a trace of the adjoining stamp at right, each with deep rich color and wonderfully crisp impressions, all tied on a clean folded letter **to Gotha, Germany** by two neat strikes of nine-bar rimless grid cancels, matching double circle "Luxembourg 12 Mai 54" French type datestamp at bottom, interestingly the single stamp is additionally tied by a large boxed "PD" handstamp, such cancels were to be applied to the letter and not the stamps for pre-franked letters delivered outside of the Austrian-German Postal Union, Trier transit and Gotha arrival circular datestamps on reverse, backflap tear just extending to the top of the cover, Very Fine, a most attractive and scarce usage, ex Del Puente, with 1981 Demuth certificate..... E. 500-750
- 2057 ☒ **1852-59, 1sg Brown Red (2; Michel 2c; Prifix 2).** Horizontal pair, three ample to large margins, fourth at top cut close to the frameline, deep luxuriant color, **used in combination with a single 1sg in a distinctive "flesh" color from a totally different printing (2; Michel 2c; Prifix 2)**, a gem example with four large to extra-large margins, incl. a sizable sheet selvage at right, all tied on an attractive folded cover **to Frankfurt, Germany** by nine-bar rimless grid cancels, matching double circle "Luxembourg 19 Jun 56" French type datestamp at top right, large boxed "PD" handstamp, transit and arrival postmarks on reverse, Very Fine and quite choice, ex Del Puente, signed W. Balasse E. 500-750



2058 front and back



- 2058 ☒ **1852-59, 1sg Brown Red (2; Michel 2c; Prifix 2).** Vertical strip of three, a magnificent quality strip with large margins all around and absolutely stunning proof-like color and impressions, tied on an immaculate folded cover to **Ruhlra, Germany**, by two strikes of three ring cancel with a dot in the center, small red double circle “Luxembourg 17 Jan 53” French type datestamp at right, blue merchants double oval cachet at bottom left, on the reverse are no less than nine different transit and arrival postmarks
 EXTREMELY FINE. A GORGEOUS ONE-SILBERGROSCHEN COVER FULL OF CHARACTER AND POSSESSING EXCEPTIONAL EYE APPEAL.
 Ex Del Puente..... E. 1,000-1,500



2059

- 2059 ☒ **1852-59, 1sg Orange Red (2b; Michel 2d; Prifix 2e).** Vertical strip of three, three full to large margins, fourth at bottom close but clear, brilliant color and impressions, neatly tied on folded cover to **Villingen, Germany** by three strikes of nine-bar rimless grid cancels, matching double circle “Luxembourg 9 Sept 55” French type datestamp at right, large boxed “PD” handstamp, transit and arrival postmarks on reverse, strip lifted for examination and hinged back in place, Very Fine, a rare usage of the elusive and distinctive Orange Red One-Silbergroschen, ex Del Puente, signed Schwenn..... E. 1,000-1,500



2060



2061



2062

- 2060 ☒ **1852-59, 1sg Brown Red (2; Michel 2c; Prifix 2).** Horizontal strip of three, ample to full margins all around, deep rich color, tied on folded cover to **Rudesheim, Germany** by light strikes of nine-bar rimless grid cancels, double circle “Luxembourg 16 Juin 57” French type datestamp in blue at top right, overstruck with large boxed “PD” also in blue, various transit and arrival backstamps, faint toning to strip at top left, otherwise Very Fine E. 400-500
- 2061 ☒ **1852-59, 1sg Rose (3; Michel 2f; Prifix 2i).** Horizontal strip of three, four ample to mostly large margins, incl. a partial sheet margin at right, rich color, printed on unusual buff colored paper, tied on folded cover to **Lohne, Germany** by three light strikes of nine-bar rimless grid cancels, matching double circle “Luxembourg 23 Oct 57” French type datestamp at right, Large boxed “PD” handstamp, boxed Their transit and Lohne arrival postmarks on reverse, Fine, ex Del Puente E. 400-500
- 2062 ☒ **1852-59, 1sg Flesh (2; Michel 2e; Prifix 2).** Horizontal strip of three and a horizontal pair, the former with three full margins, fourth at top close or just touching design, the latter with large well-balanced margins all around, distinctive bright color on each, tied on a December 1855 registered folded cover to **Frankfort, Germany** by multiple strikes of nine-bar rimless grid cancels, indistinct Luxembourg circular datestamp, partial large boxed “PD” handstamp, transit and arrival backstamps, Very Fine, an especially scarce franking with five One-Silbergroschen stamps, ex Del Puente..... E. 750-1,000



2063

2063 ☒ **1852-59, 1sg Flesh (2; Michel 2e; Prefix 2).** Vertical strip of eight, ample to mostly large margins, tied to the front and reverse (wrapping around) of an exploded registered cover to **Berg, Germany** by multiple strikes of nine-bar rimless grid cancels, matching double circle "Luxembourg 19 Mars 56" French type datestamp, large boxed "PD" and script "Charge" handstamps, Thfonville transit circular datestamp on reverse, both the strip and the cover have various faults, incl. severing the strip in the middle of the fifth stamp due to exploding the cover for display, nonetheless an important First Issue cover being **the largest known strip of the One-Silbergroschen on cover**, ex Del Puente, with 1985 Demuth certificate E. 1,000-1,500

THE MOST IMPORTANT COVER IN LUXEMBOURG PHILATELY



2064

2064 ☒ **1852-59, 1sg Brown Red (2; Michel 2c; Prefix 2).** Block of ten (2x5), plus two horizontal pairs, tied on large portion of a registered folded cover to **Harve, France**, seven crisp strikes of the nine-bar rimless grid cancels the large block and pairs, red double circle "Luxembourg 3 Aout 53" French type datestamp at bottom center, partial strike of Luxembourg Roussy-le-Village transit circular datestamp in red just ties the block to the cover, the block of ten is in an incredible state of preservation, with close to mostly full margins, just barely touching design at bottom right, trivial corner crease at top left, pairs are fairly well-margined (one just cutting at top), both the large block and pairs possess strikingly intense color, the partial cover has some small faults incl. a vertical file fold between where the block and pairs were positioned, and with some light foxing not affecting the block

FINE. A BREATHTAKING MULTIPLE THAT IS, BY FAR, THE LARGEST KNOWN MULTIPLE OF THE ONE-SILBERGROSCHEN FIRST ISSUE. IN ADDITION TO BEING THE MOST IMPORTANT PHILATELIC ITEM IN LUXEMBOURG PHILATELY, THIS SHOWPIECE IS ALSO ONE OF THE GREATEST CLASSIC IMPERFORATE MULTIPLES IN EXISTENCE. AN ESSENTIAL ITEM IF ONE WISHES TO BUILD AN INTERNATIONAL LARGE GOLD MEDAL COLLECTION OF LUXEMBOURG.

This stunning piece last appeared on the marketplace nearly 32 years ago in the October 1982 Corinphila sale of the Grand Prix International Collection of Luxembourg formed by Isac Seligson. At that auction, Mr. Houser acquired this piece for 75,000SF (approximately \$40,000.00 at that time) — representing the highest price ever paid for a philatelic item for Luxembourg — a record which still stands today.

Signed W. Balasse and with a 1981 Demuth certificate E. 30,000-40,000

FIRST ISSUE COMBINATION COVER



2065

2065 **1852-59, 10c Black (1; Michel 1a; Prefix 1) and 1sg Flesh (2; Michel 2e; Prefix 2).** A vertical pair of the 10c, along with a vertical strip of four and a pair (once forming a strip of six) of the 1sg, all tied on a fragment of a cover front (and bit of reverse) by multiple strikes of the nine-bar rimless grid cancel of Luxembourg, partial strike of a red circular datestamp and large boxed "PD" handstamp, the 10c pair possesses ample to mostly large margins, the 1sg pair and strip have margins ranging from very close to large, the strip was folded over to the reverse of the cover front (where the 10c stamps were placed as well) resulting in a crease in the second stamp of the strip of four, Fine appearance, despite being just a small fragment of a cover and its attendant flaws, this piece represents **an extremely rare mixed-franking of the first two stamps of Luxembourg**, ex Del Puente (where it was the only mixed franking found in the auction), with 1970 F.D.S.P.L. certificate E. 750-1,000

FIRST ISSUE AND COAT OF ARMS COMBINATION FRANKINGS



2066

2066 ☒ **1852-59, 10c Gray Black (1; Michel 1d; Prifix 1), used in combination with 1859, 30c Rose Lilac Coat of Arms, Imperforate (10).** A superb single of the former with huge margins all around, incl. showing a bit of the adjoining stamp at the bottom, and a choice single of the latter with three very large margins, incl. a bit of the sheet selvage at left, fourth margin at bottom just touching design, each neatly tied on an immaculate petite folded cover to **La Ferte Fresnee, France** by two light strikes of nine-bar rimless grid cancels, with matching double circle “Luxembourg 5 Oct 59” French type datestamp at right, red Luxembourg transit circular datestamp and large boxed “PD” handstamp, various transit and arrival postmarks on reverse

EXTREMELY FINE. AN ENORMOUSLY RARE MIXED-FRANKING OF THE FIRST TWO ISSUES OF LUXEMBOURG — ONE OF ONLY TWO RECORDED — IN A CONDITION THAT SIMPLY COULD NOT BE IMPROVED UPON. ONE OF THE HIGHLIGHT'S OF THE HOUSER COLLECTION AND ONE OF THE KEY RARITIES OF LUXEMBOURG.

Generally, the first issue of Luxembourg ceased usage in 1860. The 30c Coat of Arms was delivered for postal usage on September 21, 1859. Thus creating a very small window where stamps from both issues could possibly be used in combination with one another.

Ex Del Puente. With 1985 Demuth certificate E. 4,000-5,000



2067

2067 **1852-59, 1sg Flesh (2; Michel 2e; Prifix 2), used in combination with 1859, 40c Red Orange Coat of Arms, Imperforate (12).** Select quality single of the former, with four large and well-balanced margins, and a horizontal strip of four of the latter, with close to mostly full margins, brilliantly fresh color, tied together on the same small piece of a registered cover by four lovely strikes of double circle “Luxembourg 4 Juin (59)” French type datestamps, tiny closed tear at bottom of second stamp in the 40c strip

VERY FINE AND WONDERFULLY CHOICE. THIS PIECE, AND THE COVER OFFERED IN THE PREVIOUS LOT, ARE THE ONLY TWO RECORDED EXAMPLES OF MIXED FRANKINGS BETWEEN THE FIRST TWO ISSUES OF LUXEMBOURG. THIS PIECE, OF COURSE, BEING THE UNIQUE MIXED FRANKING USAGE WITH THE ONE-SILBERGROSCHEN STAMP. THIS PIECE AND THE AFOREMENTIONED COVER TOGETHER WOULD CREATE AN INCREDIBLE EXHIBITION PAGE.

Last offered at auction in a September 1985 Corinthila sale, as part of the Large Gold Medal Collection formed by Juan Del Puente. With 1985 Demuth certificate..... E. 5,000-7,500

1859-81 COAT OF ARMS ISSUE



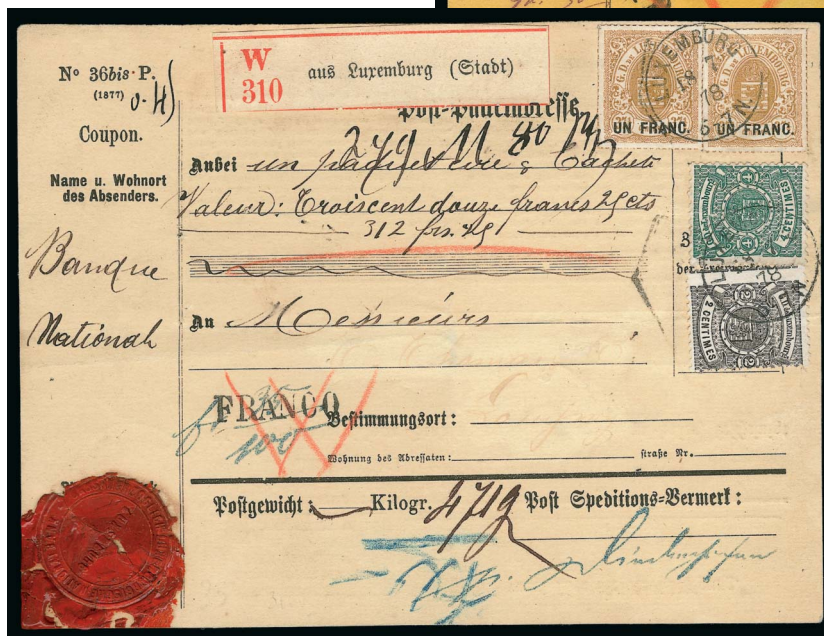
- 2068 ☒ **1859, 10c Blue Coat of Arms, Imperforate (7; Michel 6a).** Block of four, three very large margins, fourth at left a bit irregular and touching design, tied on a small cover **to France** by distinctive squared grid cancels of Esch-Alzette, matching double circle “Esch-Alzette 3 IV 1865” French type datestamp at right, very light strike of Luxembourg red transit circular datestamp, small boxed “PD” handstamp, various transit and arrival postmarks on reverse, block affixed just slightly over the left edge of the cover, pre-affixing vertical crease between the stamps of the block, repaired cover tear about halfway down the cover at top, Fine appearance, one of only a few known covers bearing a block of the 10-Centimes Imperforate Coat of Arms issue, signed R. Goebel and with 1983 Demuth certificate..... E. 300-400
- 2069 ☒ **1859, 37½c Green Coat of Arms, Imperforate (11; Michel 10).** Three-margined single, with bright fresh color, tied on clean folded cover **to Ausberg, Germany** by central strike of double circle “Luxembourg 14 Mars 67” datestamp, additional strike at left, large boxed “PD” handstamp, two-line railroad station transit marking on the reverse, Very Fine, a scarce stamp when found on cover..... E. 300-400
- 2070 ☒ **1866, 40c Orange Red Coat of Arms, Rouletted in Color (25a; Michel 23a).** Horizontal pair, exceptionally well-centered and with bright color, neatly tied on registered cover **to Metz, France** by double-circle “Diekirch 16 Janv 69” French type datestamp, subsequently returned to sender and marked with script “Charge” handstamp, multiple transit and arrival postmarks on the reverse, minor edge wear, cover opened out for display, Fine and scarce, ex Seligson..... E. 400-500
- 2071 ☒ **1871, 20c Gray Brown and 1874, 40c Pale Orange Coat of Arms, Rouletted in Color (21, 25; Michel 19a, 23b).** Well-centered singles of each tied on an attractive blue colored cover **to Brussels, Belgium** by neat strikes of “Remich 2. 8. 77” town circular datestamp, script “Charge” handstamp at top, Luxembourg transit circular datestamp and Brussels arrival circular datestamp on reverse, small repair to top right corner of cover, Very Fine, a scarce combination franking.... E. 400-500



2072

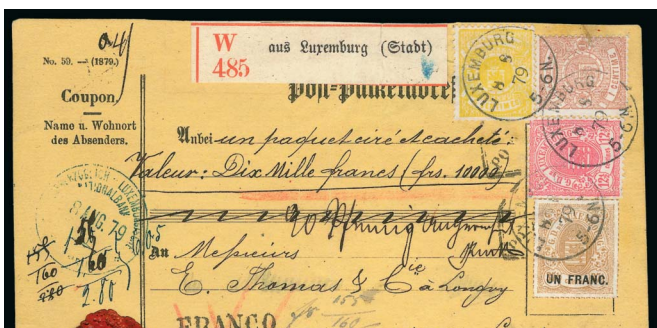


2073

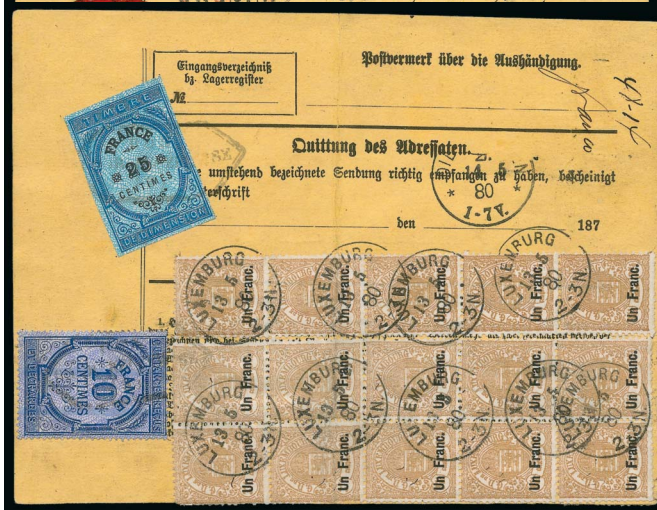


2074

- 2072 ☒ 1872-74, 20c Gray Brown, 40c Pale Orange, 1fr on 37½c Bister, Rouletted in Color, used in combination with 1875, 10c Gray Lilac, Perforated 13 (21, 25, 26, 33; Michel 19a, 23b, 25, 31a). Singles of each tied on a small registered cover to Le Bourget, France by multiple strikes of "Troisvierges 13. 6. 78" town circular datestamp, two different style "Charge" handstamps, one in red, red transit circular datestamp also on the front, multiple transit and arrival postmarks on reverse, incl. an interesting accounting boxed handstamp, 1fr stamp with slightly rounded corner, Very Fine, an attractive and scarce four-color mixed issue franking, ex Seligson, with 1982 Demuth certificate..... E. 1,500-2,000
- 2073 ☒ 1872, 1fr on 37½c Bister, Rouletted in Color, used in combination with 1872, 1c Red Brown, Rouletted in Color, and 1876, 5c Yellow, Perforated 13 (26, 17, 32; Michel 25, 24, 30a). Two examples of the 1fr and singles of the other two, all tied on yellow colored parcel post card used locally, four strikes of "Luxembourg 15. 9. 77" town circular datestamp, red wax seal at bottom left, various handstamps and endorsements, corner crease to card at bottom left affecting wax seal, overall Very Fine, an attractive three-color franking, with the 1fr on 37½c stamp being especially scarce on cover..... E. 500-750
- 2074 ☒ 1872, 1fr on 37½c Bister, Rouletted in Color, used in combination with 1875, 2c Black and 4c Green, Perforated 13 (26, 30, 31; Michel 25, 28, 29). Pair of the 1fr on 37½c (well-centered), singles of the other two stamps, all tied on buff colored parcel post card used locally, two strikes of "Luxembourg 18. 7. 78" town circular datestamp, red wax seal at bottom left, various handstamps and endorsements, Very Fine, an attractive three-color franking, with the 1fr on 37½c stamp being especially scarce on cover.. E. 500-750



2075



2077

2076

- 2075 ☒ **1872, 1fr on 37½c Bister, Rouletted in Color, used in combination with 1876-78, 1c Red Brown, 5c Yellow and 12½c Lilac Rose, Perforated 13 (26, 29, 32, 34; Michel 25, 27, 30a, 32a).** Nicely centered singles of each tied on scarce yellow colored parcel post card to **Longwy, France** by three “Luxembourg 8. 8. 79” town circular datestamps, red wax seal at bottom left, various transit and arrival postmarks, some mounting scuffing on reverse, otherwise Very Fine, a scarce four-color mixed issue franking, ex Seligson.... E. 500-750
- 2076 ☒ **1879, 1fr on 37½c Bister, Perforated 13 (39; Michel 36).** A stunning franking consisting of a block of ten (2x5) and a vertical strip of five (on the reverse) and a pair (on the front) of a yellow colored parcel post card used to **Longwy, France**, used in combination with a pair of the 1880, 25c Blue (46; Michel 43), plus 10c and 25c revenue stamps, with the postage stamps being tied by “Luxembourg 13. 5. 80” town circular datestamp, various handstamps and endorsements, three 1fr stamps with blunted perforations on one side being affixed just at the edge of the card, central vertical file fold affects three stamps (one with paper splitting). Fine appearance, a huge and impressive franking of a very scarce stamp when found on cover, ex Seligson E. 1,500-2,000
- 2077 ☒ **1875, 4c Green, Perforated 13, used in combination with 1882, 5c Light Green and 20c Orange, Perforated 12½ (31, 51, 54; Michel 29, 48, 51).** Horizontal strip of four and a single of the 1875 4c, used along with singles of the 1882 5c and 20c, on a pretty registered cover to **Brussels, Belgium**, “Diekirch 21/3 88” double circle postmarks tie all of the stamps, various transit and arrival markings on the reverse, Very Fine, a particularly scarce and unusual mixed issue franking, ex Seligson E. 400-500
- 2078 **1859-81 Coat of Arms Issues Accumulation (4/47; Michel 3/44).** An interesting assemblage of over 200 items, incl. the imperforate, roulette and perforated issues, we note many unused singles and blocks of four (some cataloguing quite high), used stamps with a few better cancels, a handful of covers or parcel post cards franked with Coat of Arms issues, a couple of the covers are of interest incl. a very clean cover to Paris bearing two 1866 40c Orange Red with colored roulettes, concluding with a small group of what appear to be plate proofs and a range of forgeries, condition a bit mixed, but many are Fine or better, undoubtedly a useful lot for the specialist....*Not illustrated* E. 1,500-2,000

END OF SALE — THANK YOU

Bid Form—15% Premium Sale

Sale 1069

Wednesday, May 14, 2014

1 Please provide the following information:

NAME

ADDRESS.....

CITY/STATE/ZIP

TEL. (DAY) FAX

E-MAIL

PADDLE #
<i>Do not write in box</i>

2 Have you purchased from us in the past 5 years? YES (if so, please go to Section 3)
 NO (please provide a trade reference and bank information)

References:

Stamp Firm:..... Telephone

Bank:..... Account #

3 In the space provided below, enter the **lot number** from **Sale 1069** and your corresponding bid. Please use **whole dollar amounts** only and enter the **maximum bid** you wish to have us execute on your behalf, according to the **bidding increments** on other side of this form. **Your bid will NOT include the 15% buyer's premium.** We will advance the bidding at one increment over the next highest bid; therefore, you may be awarded the lot at less than your maximum bid. Please do not use "plus" bids or "buy" bids. If you wish to bid on one lot **or** the other, indicate your "or" bid between lot number/bid entries and bracket your choices. If you wish to place a **bidding limit** on the total amount of your bids, please enter your limit in the space marked "Limit Bids".


PLEASE NOTE BIDDING INCREMENTS AND SHIPPING CHARGES (ON BACK OF THIS PAGE)

LIMIT BIDS: Check this box if you wish to limit the total amount of your bids (not including the **15% buyer's premium**) in this sale. Your bids will be executed until your bidding limit no longer allows for additional bids. **The total amount you wish to bid is:** \$.....

Lot	Bid	Lot	Bid	Lot	Bid
	\$		\$		\$

4 **AGREEMENT:** By signing this bid form, you agree to pay for purchases resulting from your bids, in accordance with the **Conditions of Sale** printed in the sale catalogue. You also agree to pay the **15% buyer's premium, shipping costs (see reverse), and sales tax or use tax or customs duty which may be due on the total invoiced amount.** It is understood that these bids will be executed by Siegel Auction Galleries as a courtesy to absentee bidders, but you waive the right to make any claim against the auctioneer or the firm, arising from the these bids. **You are responsible for your written bids, including any errors on your part and any additions or changes to the bids herein.**

Payment must be made by cash, check, money order or wire transfer. Credit cards (Visa, Mastercard and Discover only) can be accepted as payment but will be subject to a 3% Convenience Fee, which will be added to the total of the entire invoice (including hammer price, buyer's premium, shipping and transit insurance charges and any applicable taxes).

 SIGNED..... TODAY'S DATE.....

5 Please submit your bids promptly (telephone bids must be confirmed in writing).

Mail to: **Robert A. Siegel Auction Galleries, Inc.**
 60 E. 56th Street, 4th Floor, New York, N.Y. 10022
 Telephone (212) 753-6421

OR FAX YOUR BIDS: (212) 753-6429

Shipping Instructions, Bidding Increments and space for additional bids on other side of form



Additional Bids

Sale 1069—May 14, 2014

Lot	Bid	Lot	Bid	Lot	Bid
	\$		\$		\$

Shipping and Transit Insurance

We will be pleased to arrange for shipping and transit insurance for purchases in this sale (except those described as “floor sale only”). To expedite billing and delivery of lots to hundreds of buyers per sale, we use standard charges for postage and insurance, based on the package weight and mailing requirements (see schedule). The standard charges are sometimes slightly more or less than the actual postage or Fedex fees, but we do not include any charge for our labor or packing costs. Therefore, we ask all buyers to remit the prescribed amount for shipping charges.

Transit insurance is provided in all cases, except when the buyer has furnished us with proof that insurance coverage is effective under another policy. Proof, in such cases, will be accepted in the form of a written certificate from the insurance carrier.

You are responsible for insurance charges, which will be added to your invoice. This coverage is provided for our mutual protection against theft or loss in transit.

Bidding Increments

The auctioneer may regulate the bidding at his discretion. However, to assist absentee bidders in establishing their maximum bid for each lot, the increments shown at right will be used in most cases. We recommend that written bids conform to these increments (those which do not will be reduced to the next level).

Current Postage & Insurance Charges

Weight/Class	Shipping Method	Charges
Up to 2 lbs.	Fedex Envelope	\$20.00
Up to 2 lbs.	USPS Envelope	\$20.00
Up to 2 lbs.	USPS Box	\$50.00
Over 2 lbs.	Fedex Box	\$35.00*
Over 2 lbs.	USPS Box	\$50.00*
Non-U.S.	Fedex/Courier	\$50.00**
Bulk Lots		By weight and value
<p>These fees reflect additional Fedex charges for residential delivery, signature and fuel surcharge. *Higher fees will be charged on packages weighing more than 5 lbs. or insured for more than \$75,000. **Buyers are liable for all customs duties and clearance charges. An accurate declaration of value will be made on all import/export documents.</p>		

4/2014

Up to \$50	\$5	\$3,000-7,000	\$250
\$50-200	\$10	\$7,000-20,000	\$500
\$200-500	\$25	\$20,000-30,000	\$1,000
\$500-1,000	\$50	\$30,000-75,000	\$2,500
\$1,000-3,000	\$100	\$75,000 up	\$5,000

4/2014



PRICES REALIZED FOR SALE 1069---5/14/2014
Classic Luxembourg from the Estate of Gary H. Houser
 Robert A. Siegel Auction Galleries, Inc.
 60 East 56th Street, 4th Floor, New York, NY 10022
 Tel (212) 753-6421 Fax (212) 753-6429

Lot#	Realized	Lot#	Realized
2001	1,200	2043	750
2002	425	2044	850
2003	1,800	2045	1,000
2004	1,500	2046	850
2005	1,700	2047	1,700
2006	1,800	2048	4,000
2007	500	2049	4,250
2008	1,000	2050	5,000
2009	700	2051	3,750
2010	1,200	2052	650
2011	425	2053	5,000
2012	1,400	2054	550
2013	750	2055	1,300
2014	1,600	2056	1,100
2015	475	2057	1,500
2016	475	2058	2,200
2017	4,750	2059	1,500
2018	900	2060	1,000
2019	650	2061	1,100
2020	3,250	2062	3,000
2021	550	2063	2,800
2022	700	2064	22,000
2023	4,750	2065	2,800
2024	1,900	2066	9,500
2025	9,000	2067	5,250
2026	13,500	2068	850
2027	1,300	2069	250
2028	400	2070	2,000
2029	1,800	2071	1,600
2030	1,100	2072	5,250
2031	325	2073	1,500
2032	475	2074	1,400
2033	2,100	2075	1,500
2034	350	2076	2,800
2035	800	2077	1,200
2036	800	2078	5,000
2037	1,700		
2038	1,200		
2039	1,100		
2040	650		
2041	5,750		
2042	700		