





THE CANCELLATION AND POSTAL MARKINGS ON THE 1¢ STAMP 1861-69

MARCOPHILY

POSTAL HISTORY

GRILL STAMP



*P.F.C.*

Postal history



Large unusual target cancellation on local mail.

P.O. rule from the first issue of 1847 stamps, all stamps are to be cancelled immediately upon presentation. It was only after 1864 that town marking was not required on local mail.

No. 103 502

Oct. 30, 1981

THE PHILATELIC FOUNDATION

270 MADISON AVENUE  
NEW YORK, N.Y. 10016

EXPERT COMMITTEE

We have examined the enclosed item submitted by the  
applicant described as follows:

Country USA Issue 1861 Denomination 1¢

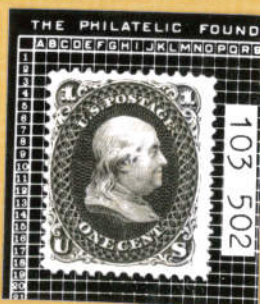
Color blue Cat. No. 63

Brief description or additional  
information

All Catalogue numbers are Scott's unless  
otherwise specified.

Unused, o.g.

of which a photograph is attached and are of the opinion  
that it is genuine.-----



*Richard Basini*  
For The Expert Committee  
Chairman

submitted by Richard Basini



1861

With the approach of Civil War, the stamps of 1857 are declared obsolete, demonetized and not good for postage.



*Unused*

The New stamps issued mid Aug. 1861, Blue color.



Postmarked Aug 30 1861

*early*



Regular Issue  
Recognized Color Shades  
1861



Blue Color Shades



Ultramarine Color Shades



Dark blue

Note.

Color shades best determined against a Gray background

# Regular Issue

Dark Blue



## Perforations

The perforating of U.S. stamps was less than 5 years old, when the 1861 issue appeared in Aug of 1861.



Double  
Perfs.

Mis-perf  
Bottom.



Regular Issue

Perforation

1861

The imperforate sheets of 100 stamps, had to be hand fed into the perforating machine twice, once in each direction. Correction of some mistakes was to try again in the same direction. This resulted in double perforations.

1¢ drop letter rate, double verticle perforations



3¢ first class mail, double bottom perforation



Regular Issue  
Cut before perforating  
1861

The stamps are printed imperforate in sheets of 200 stamps with each sheet marked in the center with a guide line, on top and bottom for cutting in half. This knife cut made 20 stamps per sheet with one straight edge, on the right and left.



Mis-cut right

Guide line



Mis-cut left



Fine guide line  
center cut.



First class postage paid from Wayland Ms., each stamp cancelled with an early large PAID cancel.

The center mis-cut stamp shows a bottom guide line.



Regular Issue  
Straight edge  
1861

Stamps from the center of the sheets, all a  
mis-cutting left or right of center line.



Top guide line  
←



Regular Issue  
Varieties  
1861



Dot in U



Double transfer  
ONE CENT

*APSC*



N.Y.F.M.



Paper wrinkled in printing

*extremely scarce  
on 19.*



Regular Issue

Usage

1861

The new stamp continues to pay the Circular rate of 1852, 3 oz. or less anywhere in U.S. in an unsealed envelope.



It also pays the Drop letter rate. A sealed envelope, never leaving the town P.O., and



a government letter carrier fee of 1¢ on all first class mail carried to or from the P.O. until July 1863.



Rate change July 1 1863, now 2 cents for a Circular or Drop letter. Also established now is 2nd. class mail for circulars.



THE

NO LAW PETITION

OF THE

HIGHER LAW MEN

OF

CLINTON, WISC.,

WITH REMARKS THEREON

BY

J. TINKER.

ALSO THE

HIGHER LAW DECISIONS

AND

LOWER LAW DECISIONS

OF

CLINTON,

AS COMPILED BY

J. TINKER.





Regular Issue

Usage

1861



While three 1¢ stamps pay a first class letter rate per  $\frac{1}{2}$  oz. until Oct 1, 1883 to all parts of the U.S.



*Sellege V.F.  
Most unusual*

In an era of demanded separate stamp obliterations.

The 1¢ stamp is also used to make up higher rates for foreign mails.



38

# CANCELLATIONS

Fancy or unusual cancels, not issued by the P.O. Dept., but bought or made by postmasters or clerks.



Bristol, R.I.



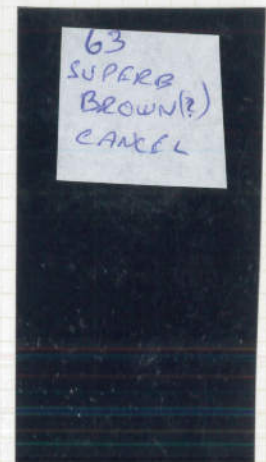
Brooklyn N.Y.



Rutland VT.



1c Blue (63), horizontal strip of 3, FVF, tied to small piece by "Morris & Essex R.R." CDS. fresh & scarce...



RARE

Town of origin unknown



# Cancellations

Ruling from the first stamps in 1847, was a good  
Black printers ink has to be used.



R.F.C.



Rare

# Regular Issue Cancellations

From July 23, 1860 the P.O. Dept. orders postmasters to apply separate cancellation to stamps, in addition to town mark on letters.





# Cancellations

The postal regulation was repeated in 1862 for the separate cancellation of each stamp.



SCARCE MULTIPLE



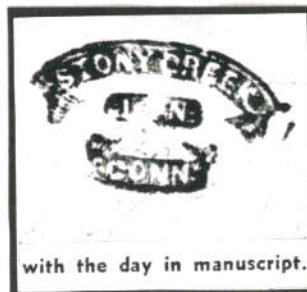
Cancellations  
In Blue Ink



V.F.



Rare





Cancellations  
Stars



# Regular Issue

## Waterbury Con. Cancellation

Postmaster John W. Hill begins carving fancy cancellations in 1865.



*extreme early  
date for 1¢ cancel*





Regular Issue

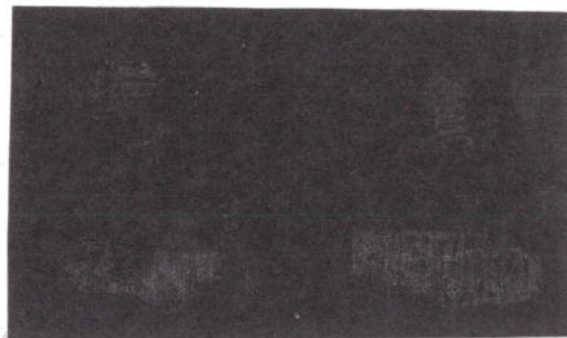
Carrier Cancell



BRITISH MAIL BOAT CANCEL

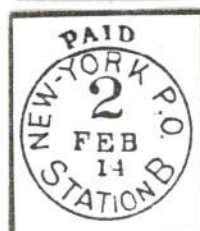
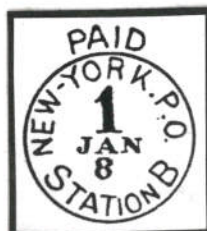
"A92" in barred oval handstamp

Philadelphia Pa.



*Rare usage*

2¢ rate N.Y. carrier cancel to England  
British stamp applied in London for  
forwarding in England.



*Rare cancel  
on stamp*

# Regular Issue

## N.Y.F.M. Cancellations

N.Y.F.M. originated in N.Y. and was dispatched from the city on mail packets bound for foreign destinations.

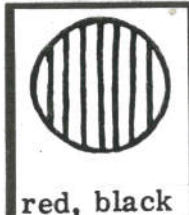
Since late 1851 N.Y. city P.O. began to use distinctive cancelling devices on the foreign mail.



V.F.



red, black



red, black



red, black

V.F. WITH  
NAIL HOLE



red, black



red, black





Regular Issue  
N.Y.F.M. Cancellations,



Additional Red foreign mail markings are struck on the envelopes, with some overlapping on the stamps.

Regular Issue

Revenue Tax



Early in the use of the new Revenue Law, it was amended so that any stamp of the correct denomination, regardless of its original designation could pay the tax. It is pen cancelled with initials and date as are most revenue uses of the postage stamp.



Regular Issue

2¢ Rate

On July 1 1863, Circulars and Drop letters are both raised to 2¢ in all cities having letter carrier service, and 2nd. class mail is established.



Regular Issue

2¢ Rate

Cancellations



V.F.

V.F. PAIR



Regular Issue  
Year dated postmarks



Omitted date slugs



Colored postmarks



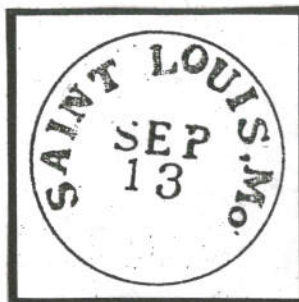
Unlisted, certified color Brown



*Brown  
first reported  
color*

*AP.S.C.*

First Class Mail



Large pre-war single circle postmark with state name on top, cancels the first class mail of  $\frac{1}{2}$  oz. or less, and sent not over 3000 miles, until July 1 1863.

New 25mm. postmark



*V.F. SCARCE*

Early in its use this small double circle 25mm postmark was issued with a few state names on top.

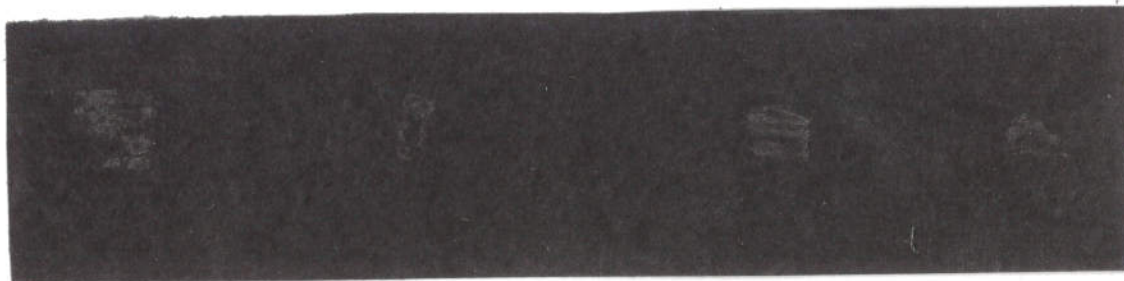


Regular Issue  
Multiple Pieces



scarce

scarce



# Patent and Patent-like Cancellations

*Blades Cutting Paper*



ARSC.



The 2¢ rate after July 1863 paid perhaps on 2nd. class mail, and the stamps cancelled with a Patent cancel of blades that cut the paper.



63

Buffalo Patent  
Cancel



11-



Regular Issue  
Patent Cancellations

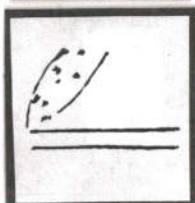
— *Circular Cuts*



— *Punching Devices*

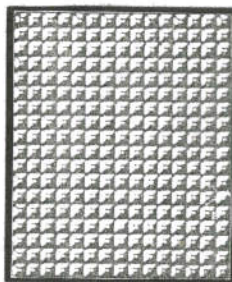


*Patents — Miscellaneous Types*



## STAMPS WITH GRILL

Late in 1867 the 1861 issue of stamps, are issued with a grill. The grill is impressed into the printed stamp paper to break its fibers, making it easier to soak up the cancellation ink, and the stamp harder to clean and reuse.



Simulated appearance of a grill roller, and because of problems encountered with all over grilled stamps the grill is frequently cut down to smaller sizes.



86



*V.F. Large  
margin stamp*



E. Grill about 11x13mm.  
14 x 15 to 17 points.

F. Grill about 9x13mm.  
11-12 x 15-17 points.

Impressed from the face down, the above grills as they appear on the backs of the 1¢ stamp.  
Not shown a "Z" grill of great scarcity, known on only three of the 1¢ stamps.

No definite dates for the issue of the two different size grills only a general year date, we assume the larger size E grill was first.

E. Grill



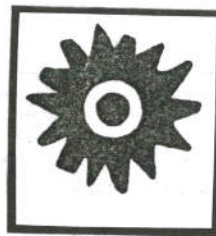
Uncommon cancels as these, are practically non existent on 1¢ grill stamps.



Regular Issue

E. Grill

Cancellations



N.Y.F.M.

*V.F.*



*Singd  
3/95  
LIX*



*PF  
#162102*

*86 "E" GRILL  
SEGMENTED STAR*

Regular Issue  
F. Grill  
Cancellations





Regular Issue

F. Grill

N.Y.F.M. Cancellations



RARE



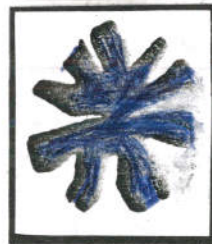
RARE



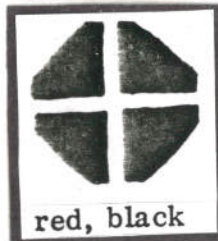
A marking that is normally found on a foreign mail letter.



V.F.



RARE



# Regular Issue

A sampling of postal markings not made to cancel the stamp, but struck on envelopes to denote a service.



Forwarding Co.

*V.F. RARE  
FIRST REPORTED*



Rating marks



*V.F.*



*V.F.*



*V.F.*



Brit. packet service

VERVIERS. A  
11 12 III  
COELN  
FRANCO

Verviers-Cologne  
Belgian R.R.,  
travelling P.O..



Express Co. service



1875 Re-issue



#102

PF cent  
0274531  
RAI - 104 3/44

A total of 3,195 stamps were re-issued from new plates for the Philadelphia Centennial Exposition, the stamp is not known used on cover, but used copies have been recognized.

---

References:

The Chronicle of the U.S. Classic Issues.

All Issues

U.S. Cancellations 1845-1869.

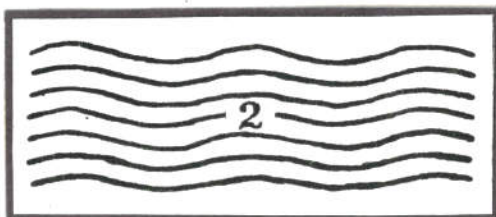
Skinner & Eno

N.Y.F.M. Seminar Series No.3 (P.F.)

Scott R Trepel

U.S. Grills.

William K Herzog



Never demonetized,  
never declared obsolete  
the 1861 stamp remains,  
to help pay postal rates.

Wavy line Automatic Machine Cancel No.2



SLATE BLUE

PALE BLUE

BRIGHT BLUE



VERY BRIGHT  
BLUE

DEEP BLUE

DARK BLUE



PALE DULL  
BLUE

DULL BLUE



TRUE ULTRA-  
MARINE

DARK ULTRA-  
MARINE

GREY BLUE



W. R. WEISS, JR.  
P.O. Box 5358  
Bethlehem, PA 18015  
(610) 691-6857

Scott # 63TC5

Imperf blue trial  
color privately  
perfected to make a  
fake stamp.

*W.R.W. 7-10-05*



CRACKED PLATE  
SHORT TRAYS



BLUE CANCEL w/  
RED FRENCH RECEIVED























WITH GRILLS



Scott # 92 O \$0.01

2605

Avg-Used with rare 'FREE' cancel. Estimated value \$100 to \$200. Small faults. The current Scott Catalog value is \$525++.



83344

#92

12740

1753 3d price

Price



1234 Y Scott #92  
UNLISTED MASONIC TYPE SIMILAR TO  
NASHUA NEW HAMPSHIRE 3 STRIKES ON  
A VERY SCARE STRIP OF THREE OF A  
SCARCE GRILLED STAMP 410520 295.00

96

used





63b  
sealed 4015

ENV  
BOX  
ALB



08

Yellow and orange inks may darken if left inside this protective sleeve. We recommend removing item for long-term storage.

Robert A. Siegel Auction Galleries Inc., 60 East 56th Street, 4th Floor, New York New York 10022  
Phone (212) 753-6421 — Fax (212) 753-6429 — E-mail: stamps@siegelauctions.com — Website: siegelauctions.com



Receipt, Money

Issues of 1857 - 1861

Living & Splitting out  
Wood Lock

3



10 00  
\$121.66

At leave

By Mrs  
April 3/69

Unusual and second recorded use of Type I Franklin stamp of the 1857 issue along with a 1¢ from the 1861 issue. Given the date of the document, April 3, 1869 this is a very late use.  
Receipt for cash payment of repair of boat.





63

O.G.  
F-UP

63

F-UP  
06



INDIGO



Masonic  
(S-E FR-M4a7)  
Kennebunkport, Me.



SHADES 1861  
TERRY SMITH FROM  
TERRY CARROLL CHASE



FREAKS



L.R. STRADDLE  
MARGIN COPY  
WITH GUIDELINE  
PSE CERT #32,503





Scott #92  
MASONIC TYPE FR-M3B 59 EAST  
WOODSTOCK VERMONT 3 STRIKES ON A  
VERY SCARCE STRIP OF THREE OF  
A SCARCE GRILLED STAMP



REVENUE  
USE



HEART



single 1c blue and horz. pair 10c  
green on piece with SON  
"FREE" on each stamp, F,  
seldom seen cancel on nice  
mixed franking R1



1867 Grilled Issues (7) 1c Blue "F" Grill, -  
Excellent strike of negative 5, a pentagram at center,

63(2)+65; tied on piece by Forwarder Blue Oval,  
for such a marking to cancel stamps... **ALX**



RED LONDON  
TRANSIT MARK  
VERY RARE  
STUCK ON  
STAMP



○ 63, rich fresh color, centered a bit to  
B, cancelled by bold negative "W" fancy  
cancel, Extremely Fine strike, rare.



centering, cancelled by a  
strike of the very fancy  
field (Skinner-Eno #PS-FC  
rease, choice strike, very







63,9 copies used on  
piece, "CAM&AM"  
RR cancels...



3180

#86, 1c Blue, "E" grill, centered to low  
cellation of Cambridge, Mass. (Skinner)



SHIP



by a clear full strike of  
ery Fine strike; ex-E



DROP



(S-E #FR-M3b45)  
Nashua, NH



(S-E #FR-M3a22)  
Saratoga Sprs., NY

boldly struck interesting Figure In

60





1c blue vert. pair with Great Britain #37 tied on piece with New York overseas cancel and London E.C. Ju16, '62" receiving strike, F-VF, interesting item



RED  
HEART  
BIX



FRENCH ARRIVAL  
CANCE 9/28/1861  
LE HAVRE



Masonic Trowel  
(Greenfield Mass)



BOLD CIRCLE OF  
EDGES  
regd 12/97 & 246  
EX



PRECANCEL  
W  
WESTON, MASS



about Fine, struck  
1 merchant's circular  
2837) ...est



M.O.B  
MONEY ORDER  
BRANCH?  
SUPERB - BLY -



PO Bw4



Supple



Bow

25



NEW  
BEFORD  
CONN  
WHITEFIELD



Montana, Terr CDS Cnl,





© 63, Vert Pair cent  
Top, Red New York Paid town cml plus Fancy Holler  
in Circle cml,



Numeral "7"



Numeral 3



"24"  
RED



8  
MULTIPLE  
STRIKES



PAID  
STRAGGLE



Numeral 5



PAID  
12



FORT  
CANCEL



PHIL.  
CARRIER  
CANCEL







UNLISEP  
BOVED  
"SHORT PAID  
+ FANCY  
GEOMETRIC  
(E)



BLUE  
BALTIMORE  
PAID  
(MI)



PAID  
3  
END #  
PNC6  
18



Boxed FREE



ED  
RK CITY



1c "F" Grill, © 92a  
Geometric Cnl, very appealing Cat. \$150.00

(B18)



WHITESVILLE,  
WISCONSIN



CLOUSE  
BROOKLYN, N.Y.  
TI



5968 Y Scott# 63  
A GEOMETRIC CANCEL  
HADDAM CONNECTICUT

ml



BRIDGEPORT  
CONN.







DEEP-BLUE BAR



NEW YORK CITY,  
NEW YORK



92

GEM  
UF +  
GEOM.  
CANCEL



NYC  
ELABORATE  
STAR



BLACK  
STAR



2230 15c Black, E. Grill (91). Crisp shade, light strike of circle of wedges cancel, Very Fine and choice, with 19... 675.00

2231 15c Black, E. Grill... ins and beautiful centering... cancel, Very Fine an...

2232 15c Black, E. Grill... USED, CIRCLE OF EIGHT WEDGES GEOMETRIC CANCELLATION.

2233 AND WE ARE OF THE OPINION THAT:

2234 IT IS GENUINE\*\*\*\*\*



86A  
"OK"  
CANCEL



1





NEW YORK CITY,  
NEW YORK



CHICAGO,  
ILLINOIS

416. FC 63 S3 (1¢ 1861); tied to piece by 4-Hearts of Bloomington/IL, compare to SE-PH-H70, scarce.....E \$80/130... 45.



but looks  
(\$1,320.+)  
-VF and  
(\$550.)  
LY DEC





Regular Issue

E. Grill

Act of March 3 1865 had lowered the 2¢ rate back to 1¢ for drop letters and circulars in towns and cities without carrier service. It now was local mail.



Local drop letter  
fancy shield on

