

THE  
ALAN B. WHITMAN COLLECTION  
OF  
OUTSTANDING UNITED STATES STAMPS



SUPPLEMENT 3

PART THREE (SALE 968B) : 1902-1934 & Back-of-Book Issues  
Tuesday, Wednesday, Thursday and Friday, September 22-25, 2009

*Robert A. Siegel*

AUCTION GALLERIES, INC.

**siegelauctions.com**

## 1908 4-CENT IMPERFORATE



4¢ Brown Imperforate, Scott 314A  
*All three formats: single, pair and guide line pair*



**Part Three (Sale 968B)—Tuesday-Friday, September 22-25, 2009**

## **The Alan B. Whitman Collection of Outstanding United States Stamps**

**Live auction to be held at Siegel Auction Galleries,  
60 East 56th Street (Park/Madison), 4th Floor, New York City**

**All lots offered without reserves**

**Lots are sold subject to a 15% buyer's premium and  
any applicable sales tax (or customs duty for non-U.S. buyers)**

The hardbound catalogue previously distributed to our clients contains all of the lot descriptions and photographs. This supplement provides current *Stamp Market Quarterly* values for PSE-graded stamps and the bid form for lots 370-889. The previous Supplement 1 contains the indexes of graded certificates.

The Whitman sale catalogue will also be available at our website **siegelauctions.com**. Bidders can use Siegel POWER SEARCH™ and MY SIEGEL™ to locate stamps and maintain personalized want lists.

Lots will not be available for postal inspection, but we will be pleased to accommodate appointments for viewing and to answer any special questions about lots.

Considering the magnitude of this offering, the consignor and Siegel have agreed to make special payment arrangements available to qualifying buyers. To discuss terms for the Whitman sale, please call 212-753-6421. Special payment terms must be agreed to in writing prior to the sale.

### **PART THREE—1902-1934 ISSUES**

#### **Session 3.1—Lots 370-474**

**Tuesday, September 22, 2009, at 1:30 p.m.**

1902-08 Issue .....	lots 370-416
Louisiana Purchase and Jamestown Issues .....	417-424
1908-1909 Issues .....	425-474

#### **Session 3.2—Lots 475-607**

**Wednesday, September 23, 2009, at 1:30 p.m.**

1910-15 Issues, including Commemoratives ....	475-607
---	---------

#### **Session 3.3—Lots 608-711**

**Thursday, September 24, 2009, at 1:30 p.m.**

1916-20 Issues .....	608-711
----------------------	---------

#### **Session 3.4—Lots 712-889**

**Friday, September 25, 2009, at 1:30 p.m.**

1919-1934 Issues .....	712-755
Air Post.....	756-766
Special Delivery .....	767-783
Postage Due.....	784-848
Offices in China .....	849-867
Parcel Post .....	868-883
Balance Lots.....	884-889

*Robert A. Siegel*

**AUCTION GALLERIES, INC.**

**60 EAST 56TH STREET, 4TH FLOOR, NEW YORK, N.Y. 10022**

**Phone (212) 753-6421 • Fax (212) 753-6429 • E-mail: stamps@siegelauctions.com**

**Catalogues, internet bidding, resources, archives and the Siegel Encyclopedia at  
[www.siegelauctions.com](http://www.siegelauctions.com)**



# Robert A. Siegel

## AUCTION GALLERIES, INC.

60 EAST 56TH STREET, 4TH FLOOR, NEW YORK, N.Y. 10022  
 Phone (212) 753-6421 • Fax (212) 753-6429 • E-mail: [stamps@siegelauctions.com](mailto:stamps@siegelauctions.com)  
[siegelauctions.com](http://siegelauctions.com)



Scott R. Trepel  
 President  
 strepel  
[siegelauctions.com](http://siegelauctions.com)



John P. Zuckerman  
 Senior Vice President  
 jzuckerman  
[siegelauctions.com](http://siegelauctions.com)



Corey Long  
 Vice President  
 clong  
[siegelauctions.com](http://siegelauctions.com)



Starr Tucker-Ortega  
 Accounts  
 stamps  
[siegelauctions.com](http://siegelauctions.com)



Carlene Counihan  
 Bids and Inquiries  
 carlene  
[siegelauctions.com](http://siegelauctions.com)

Scott R. Trepel Principal Auctioneer (licensed by NYC Dept. of Consumer Affairs, #795952)  
 Nathaniel Estes Catalogue and Digital Production

## Information for Bidders

### Bidding

The following means are available for placing bids:

- 1) Attending the Live Auction in Person:** All bidders must register for a paddle, and new bidders must provide references at least three business days in advance of the sale.
- 2) Live Internet Bidding:** Instructions for participating as a Live Internet Bidder are provided on the page opposite.
- 3) Phone Bidding:** Bidders can be connected to the sale by phone and bid through a member of staff. Requests for phone bidding are subject to approval (please contact our office at least 24 hours before the sale). A signed Bid Form is required.
- 4) Absentee Bids.** All bids received in advance of the sale, either by mail, fax, phone, e-mail or internet, are Absentee Bids, which instruct the auctioneer to bid up to a specific amount on one or more lots in the sale. Absentee Bids sent by phone, fax or e-mail should arrive at least one hour prior to the start of the sale session. Bids entered through Live Internet Bidding will be visible to the auctioneer during the sale. Written bids should be entered legibly on the Bid Form in the sale catalogue. E-mail and internet bids should be carefully typed and double-checked. All new bidders must provide references. We recommend calling or e-mailing to confirm that Absentee Bids sent by mail, fax or e-mail have been received and entered.

### Pre-Sale Viewing

Subject to availability, certain lots (except group lots) can be sent to known clients for examination. Requests must be made no later than 7 days prior to the sale. Lots must be returned on the day received. Postage/insurance costs will be invoiced.

In addition to regular viewing, clients may view lots by appointment. Our staff will be pleased to answer questions or provide additional information about lots.

### Expert Certification

Individual items offered without a current certificate (PF dated within the past five years of sale; PSE dated January 2004 or later) may be purchased subject to independent certification of genuineness and our description. **Please refer to the Conditions of Sale and Grading Terms for policies governing certification.**

### Shipping and Delivery

Procedures and charges for shipping lots are printed on the back of the Bid Form. **Bidders are responsible for all prescribed shipping charges and any applicable sales tax or customs duties.**

### Price Realized

Prices realized are sent with each invoice. Bidders with e-mail will receive a Bid Results report after the sale. Session results are posted immediately to [siegelauctions.com](http://siegelauctions.com)

# Live Internet Bidding at Siegel Auctions



Bidding from your computer lets you be part of the live auction from anywhere in the world!

There's no substitute for following the auction in real time. Live Internet Bidding lets you bid and buy as though you were right there in the saleroom.

And it's easy. Just start by following the simple steps to become a registered Live Internet Bidder. Once you've been approved for bidding, you can listen to the auction and place bids with the click of a mouse.

This step-by-step guide will instruct you how to register, set your browser and use the bidding interface.

## 1 Registering with Stamp Auction Network and Siegel Auction Galleries

Live Internet Bidding is managed by Stamp Auction Network (SAN). To bid, you must be registered and approved by *both* SAN and Siegel. To decide what you need to do, choose the description below that best fits you.

**I've already registered with SAN and have been approved by Siegel for internet bidding.** You're ready for Step 2.

**I've never registered with SAN, but I'm a Siegel client.** Go to [stampauctionnetwork.com/siegel](http://stampauctionnetwork.com/siegel) and click on "Register" at the top. Check the box for Robert A. Siegel Auction Galleries (under "R") and submit the form, indicating you are a Siegel client. Once registered at SAN, you're ready for Step 2.

**I've never registered with SAN, and this is the first time I've bid with Siegel.** Go to [stampauctionnetwork.com/siegel](http://stampauctionnetwork.com/siegel) and click on "Register" at the top. Check the box for Robert A. Siegel Auction Galleries (under "R") and submit the form **with your trade references** (please, no family members or credit card companies as references). Once registered at SAN and approved by Siegel for bidding, you can move to Step 2.

**I've bid through SAN before, but this is the first time I've bid in a Siegel sale.** Then you just need to be approved by Siegel. Go to [stampauctionnetwork.com/siegel](http://stampauctionnetwork.com/siegel) and click on "Update Registration" at the top. Your SAN account information will be sent to us for approval (you might be asked for other trade references). Once approved by Siegel for bidding, you can move to Step 2.



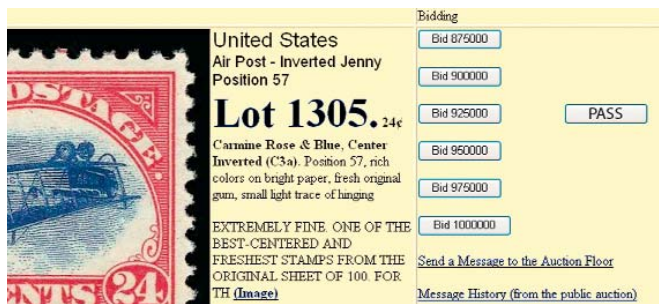
## 2 Using your browser for Live Internet Bidding and understanding the way it works.

Live Internet Bidding works by providing an audio feed of the auction (for anyone using Internet Explorer) and by allowing registered bidders to observe and place bids. The bidding interface shows a photo and description of the lot, the current bid (and your bidding status), and options for placing competitive bids. To join the auction, go to [stampauctionnetwork.com/siegel](http://stampauctionnetwork.com/siegel). You can also log on at [siegelauctions.com](http://siegelauctions.com)

The visual interface will work with any browser on both PC and Mac operating systems. However, the audio feed only works with Internet Explorer on a PC with ActiveX software installed. If ActiveX is not on your computer, you will have the option to install it.

Before bidding by internet for the first time, we recommend finding a sale in progress and listening to the public broadcast or logging in as a registered bidder. This will help you develop a feel for the sale tempo and bidding interface.

"System down" or "lost connection" events do occasionally happen. If you have any problems with Live Internet Bidding, please call 212-753-6421 for immediate assistance.



## 3 Using Live Internet Bidding to bid, track results and communicate with the auctioneer.

When you're logged on as a Live Internet Bidder, the screen will display buttons with bid increments. After you click on a bid amount, the auctioneer is immediately notified of your bid. Retracting a bid is usually not acceptable, so please bid carefully.

If you bid, then decide to stop, please use the "Pass" button, which appears once you've started bidding. This tells the auctioneer not to wait for another bid from you.

You can send messages to the auctioneer (for example, a request for extension). You can also track prior realizations from the bidding screen.



## Conditions of Sale (please read carefully before bidding)

The property described in this catalogue will be offered at public auction by Robert A. Siegel Auction Galleries, Inc. ("Galleries") on behalf of various consignors and itself or affiliated companies. By bidding on any lot, whether directly or by or through an agent, in person, or by telephone, facsimile or any other means, the bidder acknowledges and agrees to all of the following Conditions of Sale.

1. The highest bidder acknowledged by the auctioneer shall be the buyer. The term "final bid" means the last bid acknowledged by the auctioneer, which is normally the highest bid offered. **The purchase price payable by the buyer will be the sum of the final bid and a commission of 15% of the final bid ("buyer's premium"), together with any sales tax, use tax or customs duties due on the sale.**

2. The auctioneer has the right to reject any bid, to advance the bidding at his discretion and, in the event of a dispute between bidders, to determine the successful bidder, to continue the bidding or to reoffer and resell the lot in dispute. The Galleries' record of the final sale shall be conclusive.

3. All bids are per numbered lot in the catalogue unless otherwise announced by the auctioneer at the time of sale. The right is reserved to group two or more lots, to withdraw any lot or lots from the sale, or to act on behalf of the seller. The Galleries will execute bidding instructions on behalf of clients, but will not be responsible for the failure to execute such bids or for any errors in the execution of such bids.

4. **Lots with numbers followed by the symbol ° are offered subject to a confidential minimum bid ("reserve"), below which the lot will not be sold. The absence of the symbol ° means that the lot is offered without a reserve. If there is no reserve, the auctioneer has sole discretion to establish a minimum opening bid and may refuse an offer of less than half of the published estimate. Any lot that does not reach its reserve or opening bid requested by the auctioneer will be announced as "passed" and excluded from the prices realized lists after the sale. The Galleries may have a direct or indirect ownership interest in any or all lots in the sale resulting from an advance of monies or goods-in-trade or a guarantee of minimum net proceeds made by the Galleries to the seller.**

5. Subject to the exclusions listed in 5(A), the Galleries will accept the return of lots which have been misidentified or which have obvious faults that were present when the lot was in the Galleries' custody, but not so noted in the lot description. **All disputed lots must be received by the Galleries intact with the original packing material within 5 days of delivery to the buyer but no later than 30 days from the sale date. (5A) EXCLUSIONS:** The following lots may not be returned for any reason: lots containing 10 or more items; lots from buyers who registered for the pre-sale exhibition or received lots by postal viewing, thereby having had the opportunity to inspect them before the sale; any lot described with "faults," "defects" or a specific fault may not be returned because of any secondary fault. Photographed lots may not be returned because of centering, margins, short/nibbed perforations or other factors shown in the illustrations. Lots may not be returned for any of the following reasons: the color of the item does not match the color reproduction in the sale catalogue or website listing; the description contains inaccurate information about the quantity known or reported; or a certification service grades a stamp lower than the grade stated in the description.

6. Successful bidders, unless they have established credit with the Galleries prior to the sale, must make payment in full before the lots will be delivered. Buyers not known to the Galleries must make payment in full within 3 days from the date of sale. **The Galleries retains the right to demand a cash deposit from anyone prior to bidder registration and/or to demand payment at the time the lot is knocked down to the highest bidder, for any reason whatsoever.** In the event that any buyer refuses or fails to make payment in cash

for any lot at the time it is knocked down to him, the auctioneer reserves the right to reoffer the lot immediately for sale to the highest bidder. **Credit cards are not accepted as payment.**

7. If the purchase price has not been paid within the time limit specified above, nor lots taken up within 7 days from the date of sale, the lots will be resold by whatever means deemed appropriate by the Galleries, and any loss incurred from resale will be charged to the defaulting buyer. Any account more than 30 days in arrears will be subject to a late payment charge of 1½% per month as long as the account remains in arrears. Any expenses incurred in securing payment from delinquent accounts will be charged to the defaulter. A fee of \$250.00 per check will be charged for each check returned for insufficient funds.

8. All lots are sold as genuine. **Any lot accompanied by a certificate issued by The Philatelic Foundation within 5 years of the sale date or by Professional Stamp Experts since January 2004 is sold "as is" and in accordance with the description on the certificate. Such lots may not be returned for any reason, including but not limited to a contrary certificate of opinion.** Buyers who wish to obtain a certificate for any item that does not have a P.F. or P.S.E. certificate (dated as above) may do so, provided that the following conditions are met: (1) the purchase price must be paid in full, (2) the item must be submitted to an acceptable expertizing committee with a properly executed application form within 21 days of the sale, (3) a copy of the application form must be given to the Galleries, (4) in the event that an adverse opinion is received, the Galleries retain the right to resubmit the item on the buyer's behalf for reconsideration, without time limit or other restrictions, (5) unless written notification to the contrary is received, items submitted for certification will be considered cleared 90 days from the date of sale, and (6) in the event any item is determined to be "not as described", the buyer will be refunded the purchase price and the certification fee up to \$600.00 unless otherwise agreed.

9. Until paid for in full, all lots remain the property of the Galleries on behalf of the seller.

10. Agents executing bids on behalf of clients will be held responsible for all purchases made on behalf of clients unless otherwise arranged prior to the sale.

11. The buyer assumes all risk for delivery of purchased lots and agrees to pay for prescribed shipping costs. Buyers outside the U.S. are responsible for all customs duties.

12. **The bidder consents that any action or proceeding against it may be commenced and maintained in any court within the State of New York or in the United States District Court for the Southern District of New York, that the courts of the State of New York and United States District Court for the Southern District of New York shall have jurisdiction with respect to the subject matter hereof and the person of the bidder. The bidder agrees not to assert any defense to any action or proceeding initiated by Galleries based upon improper venue or inconvenient forum. The bidder agrees that any action brought by the bidder shall be commenced and maintained only in a Federal Court in the United States District Court for the Southern District of New York or the State Court in the county in which Galleries has its principal place of business in New York. These Terms and Conditions shall be governed by and construed in accordance with the substantive laws of the State of New York.**

SCOTT R. TREPEL, Principal Auctioneer

Auctioneer's License No. 795952  
N.Y.C. Department of Consumer Affairs  
80 Lafayette Street, New York, N.Y. 10013  
Telephone (212) 577-0111

*Revised 1/2008 15%*

### Copyright Notice

© 2009, Robert A. Siegel Auction Galleries, Inc. This catalogue in all versions, printed and electronic, is protected by copyright. The descriptions, format, illustrations and information used herein may not be reprinted, distributed or copied in any form without the express written consent of Robert A. Siegel Auction Galleries. Application for permission may be made in writing.

## Grades, Abbreviations and Values Used in Descriptions

### Grades and Centering

Our descriptions contain detailed information and observations about each item's condition. We have also assigned grades to stamps and covers, which reflect our subjective assessment. For stamps, the margin width, centering and gum are described and graded according to generally-accepted standards (an approximate correlation to numeric grades is provided at right). Although we believe our grades are accurate, they are not always exactly aligned with third-party grading terms or standards for all issues. **A lot may not be returned because a certification service grades a stamp lower than the grade stated in the description. Information from the P.S.E. Stamp Market Quarterly and P.S.E. Population Report<sup>SM</sup> is the most current available, but lots may not be returned due to errors or changes in statistics or data.**

**Extremely Fine Gem (90-100):** The term "Gem" describes condition that is the finest possible for the issue. This term is equivalent to "Superb" used by grading services.







**Extremely Fine (80-90):** Exceptionally large/wide margins or near perfect centering.

**Very Fine (70-85):** Normal-size margins for the issue and well-centered with the design a bit closer to one side. "Very Fine and choice" applies to stamps that have desirable traits such as rich color, sharp impression, freshness or clarity of cancel.

**Fine (60-70):** Smaller than usual margins or noticeably off center. Pre-1890 issues may have the design touched in places.

**Very Good (below 60):** Attractive appearance, but margins or perforations cut into the design.

### Guide to Gum Condition

Gum Categories:	MINT N.H.	ORIGINAL GUM (O.G.)				NO GUM
	 <b>Mint Never Hinged</b> <i>Free from any disturbance</i>	 <b>Lightly Hinged</b> <i>Faint impression of a removed hinge over a small area</i>	 <b>Hinge Mark or Remnant</b> <i>Prominent hinged spot with part or all of the hinge remaining</i>	 <b>Part o.g.</b> <i>Approximately half or more of the gum intact</i>	 <b>Small part o.g.</b> <i>Approximately less than half of the gum intact</i>	 <b>No gum</b> <i>Only if issued with gum</i>
Catalogue Symbol:	★ ★	★	★	★	★	(★)
PRE-1890 ISSUES	<i>Pre-1890 stamps in these categories trade at a premium over Scott value</i>			Scott Value for “O.G.”		Scott “No Gum” Values thru No. 218
1890-1935 ISSUES	Scott “Never Hinged” Values for Nos. 219-771	Scott Value for “O.G.” (Actual value will be affected by the degree of hinging)		<b>Disturbed Original Gum:</b> Gum showing noticeable effects of humidity, climate or hinging over more than half of the gum. The significance of gum disturbance in valuing a stamp in any of the Original Gum categories depends on the degree of disturbance, the rarity and normal gum condition of the issue and other variables affecting quality. For example, stamps issued in tropical climates are expected to have some		
1935 TO DATE	Scott Value for “Unused”					

### Covers

Minor nicks, short edge tears, flap tears and slight reduction at one side are normal conditions for 19th century envelopes. Folded letters should be expected to have at least one file fold. Light cleaning of covers and small mends along the edges are accepted forms of conservation. Unusual covers may have a common stamp with a slight crease or tiny tear. **These flaws exist in virtually all 19th century covers and are not always described. They are not grounds for return.**

### Catalogue Values and Estimates

Unless otherwise noted, the currently available *Scott Catalogue* values are quoted in dollars with a decimal point. Other catalogues are often used for foreign countries or specialized areas and are referred to by their common name: *Stanley Gibbons* (SG), *Dietz*, *American Air Mail Catalogue* (AAMC), *Michel*, *Zumstein*, *Facit*, etc. Estimates are indicated with an "E." and reflect our conservative valuation in dollars. Reserves will never exceed the low end of the estimate range; they will sometimes exceed Scott Catalogue value for stamps in Extremely Fine condition.

Because of certain pricing inconsistencies in the *Scott Catalogue*—for example, blocks that have no gum, the absence of premiums for Mint N.H. items, etc.—we cannot guarantee the accuracy of values quoted for multiples, specialized items and collection lots. We generally try to be conservative, but buyers may not return a lot because of a discrepancy in catalogue value due to Scott pricing inconsistencies.

### Symbols and Abbreviations (see chart above for gum symbols)

⊞	Block	E	Essay	pmk.	Postmark	No.	Scott Catalogue Number
⊞	Cover	P	Proof	cds	Circular Datestamp	hs	Handstamp
FC	Fancy Cancel	TC	Trial Color Proof	var.	Variety	ms.	Manuscript

# Resources

## siegelauctions.com



### Catalogues, Prices Realized, Power Search and My SIEGEL

Images and descriptions for all current sale catalogues are available from our website.

An archive of past sales (from Sale 786, April 1997) and prices realized (from Sale 742, May 1992) is constantly maintained to allow users to search for items and information from past sales.

Power Search™ and My Siegel™ allow you to create and save highly specialized data searches, and to receive e-mail notifications of related items in future sales.



### The Siegel Encyclopedia and Rarities Census

This feature of our website contains a wealth of information gleaned from decades of philatelic research by the dedicated philatelists at Siegel.

The up-to-date census data for 19th and 20th century U.S. rarities are a valuable resource for buyers, sellers and researchers. Every recorded example of more than 30 different rare stamps is described and, in most cases, photographed.

Our updated census of over 200 recorded rarest used stamps, over 20 recorded unused, US die and pre-cancelled stamps, two have major errors and one has poor centering. There are the only three well-centered one-cent stamps and complete in cancels:			
Clematis Mastery [YK]	SW (CAN 11) R/S 424/1952 MOT "Clematis"	SW (CAN 11) Oak Oak - R/S 204/1952, Lot 1779 - \$20,000 Sandra Oak - R/S 204/1952 10/10/1952 Lot 1771 \$41,000 2401 "Oak Oak"	SW (CAN 11) Oak Oak - R/S 1100/1971, Lot 510 16/10 "Clematis"
Clematis Mastery [YK]	SW (CAN 11) R/S 100/1952 10/10/1952 Lot 1771 \$41,000 2401 "Oak Oak"	SW (CAN 11) R/S 204/1952 10/10/1952 Lot 1771 \$41,000 2401 "Oak Oak"	SW (CAN 11) Oak Oak - R/S 1100/1971, Lot 510 16/10 "Clematis"
Clematis Mastery [YK]	SW (CAN 11) R/S 100/1952 10/10/1952 Lot 1771 \$41,000 2401 "Oak Oak"	SW (CAN 11) R/S 204/1952 10/10/1952 Lot 1771 \$41,000 2401 "Oak Oak"	SW (CAN 11) Oak Oak - R/S 1100/1971, Lot 510 16/10 "Clematis"
Clematis Mastery [YK]	SW (CAN 11) R/S 100/1952 10/10/1952 Lot 1771 \$41,000 2401 "Oak Oak"	SW (CAN 11) R/S 204/1952 10/10/1952 Lot 1771 \$41,000 2401 "Oak Oak"	SW (CAN 11) Oak Oak - R/S 1100/1971, Lot 510 16/10 "Clematis"

**The 1918 24¢ INVERTED "JENNY"**

Position 57 — auctioned by Siegel Auction Galleries on Wednesday, November 14, 2007 — set a world record for the amount paid at auction for a single U.S. Stamp.

**JENNY AUCTION FOOTAGE**

Also see Scott Trepel's exclusive video preview:  
**THE INVERTED JENNY**

Also available as an **iPod video**

To view this presentation will require the standalone Apple QuickTime Player or the QuickTime web browser plug-in.

### Informative Video Presentations

Downloadable video documentaries tell the stories of stamps and covers, such as the famous Inverted "Jenny." This is the ideal way to introduce philately to others.



# The Alan B. Whitman Collection, Part Three

## Lot Order—PSE Grade/SMQ Value Summer 2009

Grade	Scott	Lot	Year/Service/Grade	SMQ	SMQ (+)	Comments
90	304	376	2008 PSE 90 NH	330		
95	305	377	2008 PSE 95 NH	1,350		
95J	306	378	2008 PSE 95J NH	800	2,750	
95	307	379	2008 PSE 95 NH	1,200		Only one has graded higher
98	309	381	2008 PSE 98 NH	13,700		This is the highest grade awarded to date, only one other has achieved this grade
98	311	383	2008 PSE 98 OGph	2,100		
95	314A	388	2008 PSE 95 OGph	720,000		This is the highest grade awarded, the other known line pair has a PSE grade of 70
95J	319f	406	2008 PSE 95J NH	400	1,550	
100J	320a	413	2006 PSE 100J NH	310		as 98
95	323	417	2008 PSE 95 NH	560		
95	324	418	2008 PSE 95 NH	560		Four are now graded higher to date
98	325	420	2008 PSE 98 NH	4,650		Only one has graded higher to date
98J	326	421	2008 PSE 98J NH	7,500		as 98; the highest grade awarded to date and no other example has achieved this grade
98	328	423	2008 PSE 98 NH	2,250		
90	330	424	2008 PSE 90 NH	670		
90J	331	425	2008 PSE 90J NH	48	185	
95J	332	426	2008 PSE 95J NH	155	540	
95J	334	428	2008 PSE 95J NH	770	2,850	Four are now graded higher to date
95	335	429	2008 PSE 95 OGph	135		
95	337	430	2008 PSE 95 NH	890		Four are now graded higher to date
90	339	431	2008 PSE 90 NH	215		
90	340	432	2008 PSE 90 NH	345		
90	341	433	2008 PSE 90 OGph	465		
90	342	434	2008 PSE 90 NH	2,600		
90J	348	437	2008 PSE 90J NH	760	1,350	
98	348	438	2008 PSE 98 NH	860		
85	348	439	2008 PSE 85 NH	85		
90	351	446	2008 PSE 90 NH	3,850		
90J	351	448	2008 PSE 90J NH	660	1,450	
80	352	449	2008 PSE 80 NH	1,500		Only three have graded higher to date
95	353	454	2005 PSE 95 NH	990		
95	354	456	2008 PSE 95 NH	4,300		This is the highest grade awarded to date and no other has achieved this grade
95	356	462	2008 PSE 95 NH	35,000		
98	357	464	2008 PSE 98 NH	5,300		
95	364	470	2008 PSE 95 NH	18,400		
95	365	471	2008 PSE 95 OGph	5,550		
85	366	472	2008 PSE 85 NH	4,600		
85	369	474	2008 PSE 85 NH	420		
95	376	477	2008 PSE 95 NH	370		
95J	377	478	2008 PSE 95J NH	640	2,050	
98J	379	480	2006 PSE 98J NH	2,250		as 98
95J	380	481	2008 PSE 95J NH	1,600	6,500	
95	381	482	2008 PSE 95 NH	1,900		
90	385	486	2008 PSE 90 NH	410		
95J	387	490	2008 PSE 95J NH	5,200	9,300	
95	391	497	2008 PSE 95 NH	830		
90	392	499	2008 PSE 90 NH	270		
95	393	501	2008 PSE 95 NH	2,250		
95	393	503	2008 PSE 95 NH	450		One is now graded higher, at 98
98	394	505	2008 PSE 98 NH	2,100		Only one has graded higher to date
95J	394	506	2008 PSE 95J NH	450	1,000	
95J	395	508	2008 PSE 95J NH	1,150	2,300	This is the highest grade awarded to date and no other has achieved this grade
98	396	512	2008 PSE 98 NH	1,050		
90J	398	514	2008 PSE 90J NH	70	190	Catalog lists grade as XF 90 in error. Grade is XF 90 Jumbo
98J	399	515	2008 PSE 98J NH	2,250		as 98, only one has graded higher to date
95J	400A	517	2008 PSE 95J NH	1,800	4,850	
95	401	518	2008 PSE 95 NH	335		
95J	403	520	2008 PSE 95J NH	1,900	5,800	
95	404	521	2008 PSE 95 NH	5,300		
95	407	524	2008 PSE 95 NH	1,150		
90	413	528	2008 PSE 90 NH	1,000		
98J	415	531	2008 PSE 98J NH	2,750		as 98, this is the highest grade awarded to date and no other has achieved this grade
90	416	532	2008 PSE 90 NH	230		
100J	417	533	2008 PSE 100J NH	2,450		as 98, this is the highest grade awarded to date and no other has achieved this grade
100J	418	534	2008 PSE 100J NH	3,550		as 98, this is the highest grade awarded to date and only one other has achieved this grade
95	420	536	2008 PSE 95 NH	1,350		
95	421	537	2008 PSE 95 NH	4,150		
98J	427	544	2008 PSE 98J NH	1,850		as 98, this is the highest grade awarded to date and only one other has achieved this grade
95J	429	546	2008 PSE 95J NH	790	2,500	
85	431	548	2008 PSE 85 NH	70		
98J	432	549	2008 PSE 98J NH	2,050		as 98
98J	434	551	2008 PSE 98J NH	1,350		as 98
95	435a	553	2008 PSE 95 NH	670		
95	438	555	2008 PSE 95 NH	2,500		
95J	439	556	2008 PSE 95J NH	3,000	8,200	Only two have graded higher to date
98J	441	559	2008 PSE 98J NH	150		as 98
95	442	562	2008 PSE 95 NH	90		
100J	446	573	2008 PSE 100J NH	4,050		as 98, only one other has been awarded this grade to date
98	448	579	2008 PSE 98 NH	570		
100	448	580	2008 PSE 100 NH	290		as 98, only one has graded higher to date
90	449	582	2008 PSE 90 OGph	8,300		
98	452	585	2008 PSE 98 NH	840		
95	452	586	2008 PSE 95 NH	185		
95	453	588	2008 PSE 95 NH	2,500		This is the highest grade awarded to date and no other has achieved this grade
98	454	591	2008 PSE 98 NH	1,900		
95	455	593	2008 PSE 95 NH	350		
95	457	598	2008 PSE 95 NH	375		
98J	470	617	2008 PSE 98J NH	3,100		as 98, this is the highest grade awarded to date and no other has achieved this grade
95	471	618	2008 PSE 95 NH	1,000		
95J	473	620	2008 PSE 95J NH	790	2,650	
95	474	621	2008 PSE 95 NH	1,000		
98	476	623	2008 PSE 98 NH	8,050		One is now graded higher, at 98J
95	477	625	2008 PSE 95 NH	8,400		
98	480	628	2008 PSE 98 NH	2,350		This is the highest grade awarded to date
95	491	635	2008 PSE 95 OGph	21,800		This is the highest grade awarded to date and no other has achieved this grade
90	492	639	2008 PSE 90 NH	210		
98	493	640	2008 PSE 98 NH	1,550		
90	493	641	2008 PSE 90 NH	100		
85	494	642	2008 PSE 85 NH	185		

The *Stamp Market Quarterly* (SMQ) values quoted above are for stamps in Part Three which have Professional Stamp Experts (PSE) graded certificates. Values are taken from the SMQ Summer 2009 edition (Vol. 8, No. 3). SMQ values may change at any time before or after the sale. No lot may be returned because of a change in SMQ value.

# The Alan B. Whitman Collection, Part Three

## Lot Order—PSE Grade/SMQ Value Summer 2009

Grade	Scott	Lot	Year/Service/Grade	SMQ	SMQ (+)	Comments
98	495	643	2008 PSE 98 NH	1,350		This is the highest grade awarded to date and only three others have achieved this grade
98	496	644	2008 PSE 98 NH	470		One is now graded higher, at 100
95	497	645	2008 PSE 95 NH	580		
95	501	657	2008 PSE 95 NH	175		
98J	503	664	2008 PSE 98J NH	490	as 98	
95J	504	665	2008 PSE 95J NH	130	510	
90	505	669	2008 PSE 90 NH	1,100		
100J	507	672	2008 PSE 100J OGph	170		as 98
90J	509	676	2008 PSE 90J NH	65	205	
98	511	678	2008 PSE 98 NH	450		
95	512	680	2008 PSE 95 NH	145		
98J	512a	681	2008 PSE 98J NH	560	as 98	
95	513	683	2008 PSE 95 NH	175		
90J	514	684	2008 PSE 90J NH	150	480	
100	515	685	2008 PSE 100 NH	1,450		as 98, this is the highest grade awarded to date and no other has achieved this grade
90	517	687	2008 PSE 90 NH	200		
90	519	689	2008 PSE 90 NH	1,850		
98J	523	690	2008 PSE 98J NH	7,200		as 98, this is the only example to achieve this grade and only one has graded higher to date
95	524	691	2008 PSE 95 NH	1,050		
90	526	692	2008 PSE 90 NH	150		
90	527	693	2008 PSE 90 NH	115		
90J	528	694	2008 PSE 90J NH	55		
98J	528B	695	2008 PSE 98J NH	1,350	as 98	
95J	530	698	2008 PSE 95J NH	75	310	
90J	536	710	2008 PSE 90J NH	115		
95	538	712	2008 PSE 95 NH	220		
80	539	714	2008 PSE 80 NH	9,200		This is the highest grade awarded to date and no other has achieved this grade
95	541	718	2008 PSE 95 NH	780		
95J	543	719	2008 PSE 95J NH	44	190	
85	546	722	2008 PSE 85 NH	345		
95	547	723	2008 PSE 95 NH	840		
95	547a	724	2008 PSE 95 NH	1,500		
95	573	735	2008 PSE 95 NH	390		
98	573a	736	2008 PSE 98 NH	2,100		This is the highest grade awarded to date and only five others have achieved this grade
90	578	737	2008 PSE 90 NH	340		
98	579	738	2008 PSE 98 NH	2,450		Only one example has graded higher to date and only one other shares this grade
90	595	739	2008 PSE 90 NH	960		
90	599-599A	743	2008 PSE 90 NH	2,000		
85	599A	744	2008 PSE 85 NH	1,350		
90	599A	745	2008 PSE 90 NH	700		
98	599A	746	2008 PSE 98 NH	1,500		This is the highest grade awarded to date and no other has achieved this grade
95J	634A	748	2008 PSE 95J NH	2,400	6,250	
98	703b	752	2008 PSE 98 NH	1,900		This is the highest grade awarded to date and no other has achieved this grade
98	C2	757	2008 PSE 98 NH	1,000		
100	C4	759	2008 PSE 100 NH	365		as 98, only one has graded 100J and only three others share this grade
98	C6	761	2008 PSE 98 NH	1,050		
90	C15	764	2008 PSE 90 NH	1,200		
90	E3	769	2008 PSE 90 NH	1,350		
98	E5	771	2008 PSE 98 NH	6,950		This is the highest grade awarded to date and no other has achieved this grade
85	E6	772	2008 PSE 85 NH	890		
100J	E8	774	2008 PSE 100J NH	2,600		as 98, this is the highest grade awarded to date and no other has achieved this grade
98	E9a	776	2008 PSE 98 NH	3,750		Only one has graded higher to date and no other shares this grade
98	E11	777	2008 PSE 98 NH	450		
95	E11	778	2008 PSE 95 OGph	50		
98	E11b	779	2008 PSE 98 NH	650	as 95	
100	E12a	780	2008 PSE 100 NH	920	as 98	
98	E12a	781	2008 PSE 98 NH	920		
95	F1	783	2008 PSE 95 NH	450		
95	J15	792	2004 PSE 95 NH	680		Only one example has graded higher to date and no other shares this grade
90	J20	795	2008 PSE 90 NH	990		
90J	J22	797	2008 PSE 90J NH	185	390	
80	J24	799	2008 PSE 80 NH	170		
98	J26	801	2008 PSE 98 NH	2,950		This is the highest grade awarded to date and no other has achieved this grade
90	J28	803	2008 PSE 90 NH	2,400		
95	J31	806	2004 PSE 95 NH	800		Only one example has graded higher to date, at 98
95J	J32	807	2008 PSE 95J NH	800	1,650	
90	J33	808	2008 PSE 90 NH	880		
90J	J38	813	2008 PSE 90J NH	100	305	
98	J39	814	2005 PSE 98 NH	550		
90	J39	815	2008 PSE 90 NH	100		
95	J40	816	2008 PSE 95 NH	840		This is the highest grade awarded to date and only one other has achieved this grade
95	J44	820	2008 PSE 95 NH	2,550		This is the highest grade awarded to date and no other has achieved this grade
90J	J46a	821	2008 PSE 90J NH	240	400	
90	J50	827	2008 PSE 90 NH	4,250		Only one example has graded higher to date and only two others share this grade
90	J52	828	2008 PSE 90 NH	375		
95	J53b	830	2008 PSE 95 NH	520		
90	J54	831	2008 PSE 90 NH	4,450		Only one example has graded higher to date and only two others share this grade
98	J55	832	2008 PSE 98 NH	960		This is the highest grade awarded to date and no other has achieved this grade
85	J55a	833	2008 PSE 85 NH	200		
95	J61	838	2004 PSE 95 NH	100		
95J	J62b	839	2003 PSE 95J NH	100	295	
95	J65b	842	2004 PSE 95 NH	335		
90	J66	843	2008 PSE 90 NH	375		
100	J75	847	2008 PSE 100 NH	1,250		as 98, this is the highest grade awarded to date and no other has achieved this grade
95	K2	850	2008 PSE 95 NH	495		
95	K2	851	2005 PSE 95 NH	495		
95J	K6	854	2008 PSE 95J NH	1,150	2,600	
95	K7	855	2008 PSE 95 NH	1,200		
90	K8a	856	2008 PSE 90 NH	335		
95J	K8a	857	2008 PSE 95J NH	990	2,200	
95	K9	858	2008 PSE 95 NH	990		
95	K10	859	2008 PSE 95 NH	990		
80	K15	863	2008 PSE 80 NH	1,050		
90J	K18	867	2008 PSE 90J NH	450	1,300	
95J	Q2	869	2007 PSE 95J NH	235	620	
98J	Q6	871	2008 PSE 98J OGph	255	as 98	
95	Q8	874	2008 PSE 95 NH	1,450		
95J	Q9	875	2008 PSE 95J NH	950	2,500	
90	Q11	877	2008 PSE 90 NH	450		
95J	JQ1	879	2008 PSE 95J NH	215		

The *Stamp Market Quarterly* (SMQ) values quoted above are for stamps in Part Three which have Professional Stamp Experts (PSE) graded certificates. Values are taken from the SMQ Summer 2009 edition (Vol. 8, No. 3). SMQ values may change at any time before or after the sale. No lot may be returned because of a change in SMQ value.

## Bid Form—15% Premium Sale

September 22-25, 2009

1

Please provide the following information:

NAME.....

ADDRESS.....

CITY/STATE/ZIP .....

TEL. (DAY) ..... FAX.....

E-MAIL.....

PADDLE #

*Do not write in box*

2

Have you purchased from us in the past 5 years? ☐ YES (if so, please go to Section 3)  
☐ NO (please provide a trade reference and bank information)

References:

Stamp Firm: ..... Telephone.....

Bank: ..... Account # .....

3

In the space provided below, enter the **lot number** from **Sale 968B** and your corresponding bid. Please use **whole dollar amounts** only and enter the **maximum bid** you wish to have us execute on your behalf, according to the **bidding increments** on other side of this form. **Your bid will NOT include the 15% buyer's premium.** We will advance the bidding at one increment over the

next highest bid; therefore, you may be awarded the lot at less than your maximum bid. Please do not use "plus" bids or "buy" bids. If you wish to bid on one lot **or** the other, indicate your "or" bid between lot number/bid entries and bracket your choices. If you wish to place a **bidding limit** on the total amount of your bids, please enter your limit in the space marked "Limit Bids".

**PLEASE NOTE BIDDING INCREMENTS AND SHIPPING CHARGES (ON BACK OF THIS PAGE)**

☐ **LIMIT BIDS:** Check this box if you wish to limit the total amount of your bids (not including the **15% buyer's premium**) in this sale. Your bids will be executed until your bidding limit no longer allows for additional bids. **The total amount you wish to bid is:** \$ .....

Lot	Bid	Lot	Bid	Lot	Bid
	\$		\$		\$

4

**AGREEMENT:** By signing this bid form, you agree to pay for purchases resulting from your bids, in accordance with the **Conditions of Sale** printed in the sale catalogue. You also agree to pay the **15% buyer's premium, shipping costs (see reverse), and sales tax or use tax or customs duty which may be due on the total invoiced amount.** It is

understood that these bids will be executed by Siegel Auction Galleries as a courtesy to absentee bidders, but you waive the right to make any claim against the auctioneer or the firm, arising from the these bids. **You are responsible for your written bids, including any errors on your part and any additions or changes to the bids herein.**

**Payment must be made by cash, check, money order or wire transfer. Credit cards will not be accepted.**



SIGNED..... TODAY'S DATE .....

5

Please submit your bids promptly (telephone bids must be confirmed in writing).

Mail to: **Robert A. Siegel Auction Galleries, Inc.**

60 E. 56th Street, 4th Floor, New York, N.Y. 10022

Telephone (212) 753-6421

**OR FAX YOUR BIDS: (212) 753-6429**

**Shipping Instructions, Bidding Increments and space for additional bids on other side of form**



## Additional Bids

Sale 968B—September 22-25, 2009

Lot	Bid	Lot	Bid	Lot	Bid
	\$		\$		\$

## Shipping and Transit Insurance

We will be pleased to arrange for shipping and transit insurance for purchases in this sale (except those described as “floor sale only”). To expedite billing and delivery of lots to hundreds of buyers per sale, we use standard charges for postage and insurance, based on the package weight and mailing requirements (see schedule). The standard charges are sometimes slightly more or less than the actual postage or Fedex fees, but we do not include any charge for our labor or packing costs. Therefore, we ask all buyers to remit the prescribed amount for shipping charges.

Transit insurance is provided in all cases, except when the buyer has furnished us with proof that insurance coverage is effective under another policy. Proof, in such cases, will be accepted in the form of a written certificate from the insurance carrier.

You are responsible for insurance charges, which will be added to your invoice. This coverage is provided for our mutual protection against theft or loss in transit.

## Bidding Increments

The auctioneer may regulate the bidding at his discretion. However, to assist absentee bidders in establishing their maximum bid for each lot, the increments shown at right will be used in most cases. We recommend that written bids conform to these increments (those which do not will be reduced to the next level).

## REVISED CHARGES FOR SHIPPING EFFECTIVE JUNE 1, 2008

**Due to increased Fedex charges for secured delivery and fuel, we are revising our shipping charges. We apologize for circumstances beyond our control.**

## Current Postage & Insurance Charges

Weight/Class	Shipping Method	Charges
Up to 2 lbs.	Fedex Envelope	\$25.00
Over 2 lbs.	Fedex Box	\$35.00*
Non-U.S.	Fedex/Courier	\$50.00**
Bulk Lots	UPS Preferred	By weight and value
<b>These fees reflect additional Fedex charges for residential delivery, signature and fuel surcharge.</b> <b>*Higher fees will be charged on packages weighing more than 5 lbs. or insured for more than \$75,000.</b> <b>**Buyers are liable for all customs duties and clearance charges. An accurate declaration of value will be made on all import/export documents.</b>		

6/2008

Up to \$50	\$5	\$3,000-7,000	\$250
\$50-200	\$10	\$7,000-20,000	\$500
\$200-500	\$25	\$20,000-30,000	\$1,000
\$500-1,000	\$50	\$30,000-75,000	\$2,500
\$1,000-3,000	\$100	\$75,000 up	\$5,000

6/2008