

THE SCARSDALE COLLECTION



**PART FIVE—SALE 943**  
**THURSDAY, OCTOBER 4, 2007**

*Robert A. Siegel*

AUCTION GALLERIES, INC.

# THE SCARSDALE COLLECTION

**PART FIVE—SALE 943**  
**THURSDAY, OCTOBER 4, 2007, AT 6:00 P.M.**

Used 1847-69 Issues

*Offered at unreserved public auction by*

*Robert A. Siegel*

AUCTION GALLERIES, INC.

60 EAST 56TH STREET, 4TH FLOOR  
NEW YORK, NEW YORK 10022

Phone (212) 753-6421 Fax (212) 753-6429

E-mail: [stamps@siegelauctions.com](mailto:stamps@siegelauctions.com)

[www.siegelauctions.com](http://www.siegelauctions.com)

## **PRE-SALE EXHIBITION**

Tuesday, October 2 — 10:00 a.m. to 4:00 p.m.  
Wednesday, October 3 — 10:00 a.m. to 4:00 p.m.  
Thursday, October 4 — 10:00 a.m. to 4:00 p.m.  
or by appointment (please call 212-753-6421)

Lots in this sale will be sold subject to a 15% buyer's premium

## Conditions of Sale (Important—please read carefully)

The property described in this catalogue will be offered at public auction by Robert A. Siegel Auction Galleries, Inc. (“Galleries”) on behalf of various consignors and itself or affiliated companies. By bidding on any lot, whether directly or by or through an agent, in person, or by telephone, facsimile or any other means, the bidder acknowledges and agrees to all of the following Conditions of Sale.

1. The highest bidder acknowledged by the auctioneer shall be the buyer. The term “final bid” means the last bid acknowledged by the auctioneer, which is normally the highest bid offered. **The purchase price payable by the buyer will be the sum of the final bid and a commission of 15% of the final bid (“buyer’s premium”), together with any sales tax or use tax which may be due on the sale.**

2. The auctioneer has the right to reject any bid, to advance the bidding at his discretion and, in the event of a dispute between bidders, to determine the successful bidder, to continue the bidding or to reoffer and resell the lot in dispute. The Galleries’ record of the final sale shall be conclusive.

3. All bids are per numbered lot in the catalogue unless otherwise announced by the auctioneer at the time of sale. The right is reserved to group two or more lots, to withdraw any lot or lots from the sale, or to act on behalf of the seller. The Galleries will execute bidding instructions on behalf of clients, but will not be responsible for any errors in the execution of such bids.

4. **Lots with numbers followed by the symbol ° are offered subject to a confidential minimum final bid (“reserve”), below which the lot will not be sold. The absence of the symbol ° means that the lot is offered without a reserve.** In the absence of a reserve, the auctioneer has sole discretion to establish a minimum opening bid and may refuse an offer of less than half of the published estimate. Any lot that does not reach its reserve or opening bid requested by the auctioneer will be announced as “passed” and excluded from the prices realized lists after the sale. The Galleries may have a direct or indirect ownership interest in any or all lots in the sale resulting from an advance of monies or goods-in-trade or a guarantee of minimum net proceeds made by the Galleries to the seller.

5. Any lot, the description of which is obviously incorrect, is returnable, but only if the lot is returned within 14 days of receipt. All disputed lots must be returned intact with the original packing material. **The following lots may not be returned for any reason: Lots containing ten or more items; lots from buyers who have registered for the pre-sale exhibition or received lots by postal viewing, thereby having had the opportunity to inspect them before the sale; any lot described with “faults” or “defects” may not be returned because of any fault or defect. No illustrated lots may be returned because of centering, margins or other factors shown in the illustrations.**

6. Successful bidders, unless they have established credit with the Galleries prior to the sale, must make payment in full before the lots will be delivered. Buyers not known to the Galleries must make payment in full within three days from the date of sale. **The Galleries retain the right to demand a cash deposit from anyone prior to bidder registration and/or to demand payment at the time the lot is knocked down to the highest bidder, for any reason whatsoever.** In the event that any buyer refuses or fails to make payment in cash for any lot at the time it is knocked down to him, the auctioneer reserves the right to reoffer the lot immediately for sale to the highest bidder. **Credit cards are not accepted as payment.**

7. If the purchase price has not been paid within the time limit specified above, nor lots taken up within seven days from the date of sale, the lots will be resold by whatever means deemed appropriate by the Galleries, and any loss incurred from resale will be charged to the defaulting buyer. Any account more than thirty days in arrears will be subject to a late payment charge of 1½% per month as long as the account remains in arrears. Any expenses incurred in securing payment from delinquent accounts will be charged to the defaulter. A fee of \$250.00 per check will be charged for each check returned for insufficient funds.

8. All lots are sold as genuine. **Any lot accompanied by a certificate issued by The Philatelic Foundation within 5 years of the sale date or by Professional Stamp Experts since January 2004 is sold “as is” and in accordance with the description on the certificate. Such lots may not be returned for any reason, including but not limited to a contrary certificate of opinion.** Buyers who wish to obtain a certificate for any item that does not have a P.F. or P.S.E. certificate (dated as above) may do so, provided that the following conditions are met: (1) the purchase price must be paid in full, (2) the item must be submitted to an acceptable expertizing committee with a properly executed application form within 21 days of the sale, (3) a copy of the application form must be given to the Galleries, (4) in the event that an adverse opinion is received, the Galleries retain the right to resubmit the item on the buyer’s behalf for reconsideration, without time limit or other restrictions, (5) unless written notification to the contrary is received, items submitted for certification will be considered cleared 90 days from the date of sale, and (6) in the event any item is determined to be “not as described”, the buyer will be refunded the purchase price and the certification fee up to \$500.00 unless otherwise agreed.

9. Until paid for in full, all lots remain the property of the Galleries on behalf of the seller.

10. Agents executing bids on behalf of clients will be held responsible for all purchases made on behalf of clients unless otherwise arranged prior to the sale.

11. The buyer assumes all risk for delivery of purchased lots and agrees to pay for prescribed shipping costs.

12. The bidder consents that any action or proceeding against it may be commenced and maintained in any court within the State of New York or in the United States District Court for the Southern District of New York, that the courts of the State of New York and United States District Court for the Southern District of New York shall have jurisdiction with respect to the subject matter hereof and the person of the bidder. The bidder agrees not to assert any defense to any action or proceeding initiated by Galleries based upon improper venue or inconvenient forum. The bidder agrees that any action brought by the bidder shall be commenced and maintained only in a Federal Court in the United States District Court for the Southern District of New York or the State Court in the county in which Galleries has its principal place of business in New York. These Terms and Conditions shall be governed by and construed in accordance with the substantive laws of the State of New York.

SCOTT R. TREPEL, Principal Auctioneer

Auctioneer’s License No. 795952  
N.Y.C. Department of Consumer Affairs  
80 Lafayette Street, New York, N.Y. 10013  
Telephone (212) 577-0111

*Revised 5/2006 15%*

### Copyright Notice

This catalogue in all versions, printed and electronic, is protected by copyright. The descriptions, format, illustrations and information used herein may not be reprinted, distributed or copied in any form without the express written consent of Robert A. Siegel Auction Galleries. Application for permission may be made in writing.

© 2007, Robert A. Siegel Auction Galleries, Inc.

# Grading Terms, Abbreviations and Values Used in Descriptions

## Grade and Centering

The following terms are used in Siegel sale catalogues (corresponding numerical ranges shown in parentheses). Margin width, centering and gum are described according to generally-accepted standards. Stamps are graded based on our subjective assessment of condition for each issue, which do not necessarily correlate with third-party grading terms or standards for all issues. **A lot may not be returned because a certification service grades a stamp lower than the grade stated. Information from the P.S.E. Stamp Market Quarterly and P.S.E. Population Report<sup>SM</sup> is the most current available, but lots may not be returned due to errors or changes in statistics or data.**

**Extremely Fine Gem (90-100 pts.):** The term “Gem” used in Siegel catalogues describes condition that is the finest possible for the issue.







**Extremely Fine (80-90 pts.):** Exceptionally large margins or near perfect centering.

**Very Fine (70-85 pts.):** Normal size margins for the issue and well-centered with the design a bit closer to one side. “Very Fine and choice” applies to stamps that have desirable traits such as rich color, sharp impression, freshness or clarity of cancel.

**Fine (60-70):** Smaller than usual margins or noticeably off center. Pre-1890 issues may have the design touched in places.

**Very Good (below 60):** Attractive appearance, but margins or perforations cut into the design.

**Good (G) or Average (Ave.):** Cut into or perfs far into design and usually with slight faults. This condition is generally acceptable for rarities, scarce multiples or stamps used on unusual covers.

Gum Categories:	MINT N.H.	ORIGINAL GUM (O.G.)				NO GUM
	 <b>Mint Never Hinged</b> <i>Free from any disturbance</i>	 <b>Lightly Hinged</b> <i>Faint impression of a removed hinge over a small area</i>	 <b>Hinge Mark or Remnant</b> <i>Prominent hinged spot with part or all of the hinge remaining</i>	 <b>Part o.g.</b> <i>Approximately half or more of the gum intact</i>	 <b>Small part o.g.</b> <i>Approximately less than half of the gum intact</i>	 <b>No gum</b> <i>Only if issued with gum</i>
Catalogue Symbol:	★ ★	★	★	★	★	(★)
PRE-1890 ISSUES	<i>Pre-1890 stamps in these categories trade at a premium over Scott value</i>			Scott Value for “O.G.”		Scott “No Gum” Values thru No. 218
1890-1935 ISSUES	Scott “Never Hinged” Values for Nos. 219-771	Scott Value for “O.G.” (Actual value will be affected by the degree of hinging)		<b>Disturbed Original Gum:</b> Gum showing noticeable effects of humidity, climate or hinging over more than half of the gum. The significance of gum disturbance in valuing a stamp in any of the Original Gum categories depends on the degree of disturbance, the rarity and normal gum condition of the issue and other variables affecting quality. For example, stamps issued in tropical climates are expected to have some		
1935 TO DATE	Scott Value for “Unused”					

## Covers

Minor nicks, short edge tears, flap tears and slight reduction at one side are normal conditions for 19th century envelopes. Folded letters should be expected to have at least one file fold. Light cleaning of covers and small mends along the edges are accepted forms of conservation. Unusual covers may have a common stamp with a slight crease or tiny tear. **These flaws exist in virtually all 19th century covers and are not always described. They are not grounds for return.**

## Catalogue Values and Estimates

Unless otherwise noted, the currently available *Scott Catalogue* values are quoted in dollars with a decimal point. Other catalogues are often used for foreign countries or specialized areas and are referred to by their common name: *Stanley Gibbons* (SG), *Dietz*, *American Air Mail Catalogue* (AAMC), *Michel*, *Zumstein*, *Facit*, etc. Estimates are indicated with an “E.” and reflect our conservative valuation in dollars. Reserves will never exceed the low end of the estimate range; they will sometimes exceed Scott Catalogue value for stamps in Extremely Fine condition.

Because of certain pricing inconsistencies in the Scott Catalogue—for example, blocks that have no gum, the absence of premiums for Mint N.H. items, etc.—we cannot guarantee the accuracy of values quoted for multiples, specialized items and collection lots. We generally try to be conservative, but buyers may not return a lot because of a discrepancy in catalogue value due to Scott pricing inconsistencies.

## Symbols and Abbreviations (see chart above for gum symbols)

田	Block	E	Essay	pmk.	Postmark	No.	Scott Catalogue Number
⊠	Cover	P	Proof	cds	Circular Datestamp	hs	Handstamp
FC	Fancy Cancel	TC	Trial Color Proof	var.	Variety	ms.	Manuscript

*Revised 5/2006*



## POSTAGE

### General Issues

1847

Printed by Rawdon, Wright, Hatch & Edson

Imperforate



1875

### Special Printings

Reproductions of Issue of 1847

Produced by the U.S. Bureau of Engraving and Printing

Imperforate



1851-56

Printed by Toppan, Carpenter, Casilear & Co.

Imperforate



EVENING SESSION (LOTS 2001-2063)  
THURSDAY, OCTOBER 4, 2007, AT 6:00 P.M.

THE SCARSDALE COLLECTION — PART FIVE

1847 FIRST GENERAL ISSUE



2001

2001 **5c Brown (1 var)**. Huge margins all around, deep rich color as fresh as the day it was printed, detailed impression, light strike of **blue town circular datestamp** (probably Philadelphia)

EXTREMELY FINE GEM. A STUNNING EXAMPLE OF THE 5-CENT 1857 ISSUE, WITH RICH COLOR AND A RAZOR-SHARP IMPRESSION THAT SEEM TO JUMP OFF OF THE PAPER.

Based on the color, impression and blue town datestamp, this is probably a First Printing Dark Brown shade used from Philadelphia.

With 2003 P.F. certificate..... 725.00



2002

2002 **10c Black (2)**. Large even margins, light red St. Louis Mo. integral-rate datestamp leaves Washington's face almost untouched, dark shade on bright bluish paper

EXTREMELY FINE GEM. A SUPERB USED 10-CENT 1847 ISSUE.

With 1961 Grobe and 2001 P.F. certificates ..... 1,400.00

## 1851-56 ISSUE



2003

2003 **1c Blue, Ty. I (5)**. Position 7R1E, huge margins including portion of adjoining stamp at bottom, just touched at left, rich color in the distinctive bright Plate 1 Early shade, proof-like impression, neat strike of blue **“Richmond Va. Nov. 24” circular datestamp** leaves design at bottom and double transfer at top right clearly visible

EXTREMELY FINE. QUITE PROBABLY THE FINEST EXAMPLE OF SCOTT NO. 5 IN EXISTENCE, AND ONE OF ONLY A FEW SOUND EXAMPLES. POSITION 7R1E — THE SEVENTH STAMP IN THE RIGHT PANE OF PLATE ONE EARLY — IS THE ONLY ONE OF THE 1,000 POSITIONS USED TO PRINT IMPERFORATE ONE-CENT STAMPS THAT SHOWS THE COMPLETE DESIGN (TYPE I). ESPECIALLY DESIRABLE WITH THE BLUE RICHMOND CIRCULAR DATESTAMP. A MAGNIFICENT EXAMPLE OF THE RAREST AND MOST DESIRABLE CLASSIC IMPERFORATE UNITED STATES STAMP.

The published census compiled by Jerome S. Wagshal contains 90 unduplicated records of Scott 5. There has been one addition to the Wagshal census, and there are probably no more than ten examples existing outside of the census population. Therefore, the 1c 1851 Type I is the rarest of all United States stamps issued regularly prior to the 1868 Grills.

Because of the significance attached to the outer portions of the 1c 1851 design, rare types that have been carefully cut apart, so as not to impinge on any part of the design, are extremely desirable. The narrow spacing between stamps in the sheet and the users' indifference to the outlying ornamentation during separation are factors that contributed to the great rarity of four-margin examples. The example offered here comes from the “Warner strip” of Positions 7-9R1E, which was cut apart with a view towards preserving the margins of this stamp. Examples of Position 7R1E (Scott 5) with large right and bottom margins, where there was very little space between it and the adjoining stamps, are true rarities. In fact, using the census data, it may be argued that this stamp is among the two or three finest sound examples known.

Wagshal Census No. XXX. Ex Caspary, Twigg-Smith and Hinrichs. With 1976 and 2001 P.F. certificates..... 55,750.00



2004

2004 **1c Blue, Ty. Ib (5A)**. Position 6R1E, huge margins to clear, brilliant color on bright paper, neat and unobtrusive strike of Providence R.I. circular datestamp, detailed Plate 1 Early impression

EXTREMELY FINE. A STUNNING EXAMPLE OF THE RARE 1851 ONE-CENT TYPE IB FROM PLATE ONE EARLY. POSITION 6R1E IS ONE OF TWO POSITIONS ON THE PRINTING PLATE THAT FURNISHED THE BEST EXAMPLES OF TYPE IB.

Type Ib was produced only as an imperforate stamp from Plate 1 Early. Six positions on Plate 1E furnished stamps qualifying as Type Ib — Positions 3-6R and 8-9R — distinguished by the complete design at top and nearly complete design at bottom. When first entered on the plate, these six positions (as well as 7R1E) had the complete design at top and bottom. However, unlike 7R, small portions of the bottoms were burnished away. Positions 6R and 8R had less of the bottom erased than the other Type Ib positions, and for this reason they are more desirable examples of the type.

All Type Ib stamps are very scarce, and the two best examples (6R and 9R) are rare. These top-row positions usually have an ample top margin, but frequently the margins are close or cutting into the sides or bottom. The example offered here is a condition rarity.

With 2001 P.F. certificate ..... 15,000.00





2005

2005 **1c Blue, Ty. Ia (6)**. Position 100R4, huge margins incl. large part of bottom right corner sheet margin, ample at left, dark rich color and sharp proof-like impression, neat strike of circular datestamp leaves the key Type Ia design elements at bottom completely unobscured

EXTREMELY FINE. A REMARKABLE EXAMPLE OF THE 1851 IMPERFORATE ONE-CENT TYPE IA, ONE OF THE RARITIES FURNISHED BY PLATE FOUR.

Stamps printed from Plate 4 were issued in April, May and briefly in June 1857 before perforations were introduced. The relatively small number of imperforate Plate 4 stamps issued during this period explains the rarity and desirability of any of the imperforate stamp types produced from this plate (Ia, Ic, II, III and IIIa). The extremely rare Type Ia, showing the full design at bottom, was furnished only by 18 of the 200 subjects on Plate 4 (the remaining two bottom-row positions were sub-type Ic).

With 1989 and 2002 P.F. certificates ..... 12,500.00



2006

2006 **1c Blue, Ty. II (7)**. Huge margins incl. significant portions of adjoining stamps at sides, clear at bottom, beautiful bright Plate 1 Early color on crisp paper, neat strike of circular datestamp, Very Fine and choice, with 2001 P.F. certificate ..... 170.00

2007 **1c Blue, Ty. III (8)**. Position 46L4, large margins all around incl. part of adjoining stamp at bottom, deep rich color, well-struck Mobile Ala. circular datestamp, showing clear and wide breaks at top and bottom (the defining characteristic of the type)

EXTREMELY FINE GEM. A BEAUTIFUL USED EXAMPLE OF THE IMPERFORATE 1851 ONE-CENT TYPE III. RARE WITH SUCH WIDE BREAKS AT TOP AND BOTTOM. AN OUTSTANDING EXAMPLE OF THE TYPE.

Type III is defined by breaks in the outer lines at *both* top and bottom. Many Type III stamps have breaks that were created or enlarged by plate wear. Since the wear occurred over a period of time, a majority of stamps of this type (both unused and used) have small breaks in at least one line. The example offered here, with wide breaks in both lines, is a great rarity

With 1991 P.S.E. and 2002 P.F. certificates ..... 3,250.00



2007



2008

2008 **1c Blue, Ty. IIIa (8A)**. Huge margins all around incl. parts of adjoining stamps at sides, beautiful bright Plate 1 Early color, wide break at top, light strike of town datestamp

EXTREMELY FINE GEM. A SUPERB EXAMPLE OF THE 1851 IMPERFORATE ONE-CENT TYPE IIIA FROM PLATE ONE EARLY.

Type IIIa is defined as having a break in outer lines at *either* top or bottom. The example offered here, which clearly shows the bottom line complete and top line with wide break, is a superb example of the type.

Ex Drucker. With 1983 and 2002 P.F. certificates. .... 1,000.00

2009 **1c Blue, Ty. IV (9)**. Position 97L1L, **major double transfer**, enormous margins all around incl. **sheet margin** at bottom and part of adjoining stamps on three sides, rich color, bold strike of grid cancel

EXTREMELY FINE GEM. A MAGNIFICENT USED EXAMPLE OF THE ONE-CENT IMPERFORATE TYPE IV FROM POSITION 97L1L, WITH MAJOR DOUBLE TRANSFER AT BOTTOM. A SUPERB STAMP IN EVERY RESPECT.

During the course of entering subjects on printing plate, the siderographer would sometimes have to burnish out and re-enter a position if his original entry was either out of alignment or a poor impression. If the earlier entry was not completely erased, the printed impression would show evidence of the multiple transfer (usually double, sometimes triple). On the stamp offered here, this is noticeable in the lettering at bottom.

With 2002 P.F. certificate ..... 140.00



2009



2010

2010 **3c Orange Brown (10)**. Position 3R1i, large to huge margins incl. **sheet margin** at top and part of adjoining stamp at bottom, deep rich color and proof-like impression on bright paper, nicely complemented by **blue grid** cancel, Extremely Fine Gem, a superb stamp in every respect, with 1992 and 2006 P.F. certificates..... 143.00

2011 **3c Dull Red (11)**. Enormous margins incl. significant portions of adjoining stamps at top and bottom, brilliant color, neat strike of circular datestamp, Extremely Fine Gem, with 1984 and 2001 P.F. certificates..... 14.00



2011



2012

2012 **5c Red Brown (12)**. B Relief from either the second or sixth row of the plate, large even margins all around, brilliant color on crisp paper, face-free circular datestamps

EXTREMELY FINE. A BEAUTIFUL USED EXAMPLE OF THE 5-CENT 1856 ISSUE WITH FACE-FREE CANCEL.

With 1988 and 2001 P.F. certificates..... 950.00

2013 **10c Green, Ty. I (13)**. Large margins incl. part of adjoining stamp at right, intense shade and detailed impression on crisp paper, unobtrusive circular datestamp cancel

EXTREMELY FINE EXAMPLE OF THE 1855 10-CENT TYPE I IMPERFORATE.

With 2000 P.F. certificate. .... 900.00



2013



2014

2014 **10c Green, Ty. II (14)**. Enormous margins all around, including **straddle-pane sheet margin and guideline** at left and part of adjoining stamp at right, bright shade, clear strike of **New York Ocean Mail** circular datestamp with integral grid

EXTREMELY FINE GEM. A FANTASTIC 1855 10-CENT TYPE II IMPERFORATE, DISPLAYING AN ENORMOUS STRADDLE-PANE SHEET MARGIN AND NEW YORK OCEAN MAIL DATESTAMP.

The New York Ocean Mail grid was typically used on mail bagged for contract mail steamers departing from New York to Panama and other points south. .... 200.00

2015 **10c Green, Ty. III (15)**. Large to huge margins incl. **sheet margin** at left, bright color on crisp paper, unobtrusive strike of circular datestamp, fresh and Extremely Fine, with 2001 P.F. certificate..... 200.00



2015



2016

2016 **10c Green, Ty. IV (16)**. Position 64L1, **recut at top and bottom**, large to huge margins all around, bright color, neat strike of circular datestamp

EXTREMELY FINE. A BEAUTIFUL USED EXAMPLE OF THE 1855 10-CENT TYPE IV FROM POSITION 64L1, THE ONLY POSITION RECUT AT TOP AND BOTTOM.

Ex Puliafito. With 1994 P.F. certificate..... 2,000.00



2017

2017 **12c Black (17)**. Enormous margins incl. significant portion of adjoining stamps at sides, bright shade and detailed impression, well-struck Philadelphia circular datestamp

EXTREMELY FINE GEM. AN ASTONISHINGLY HUGE EXAMPLE OF THE IMPERFORATE 12-CENT 1851 ISSUE.

With 1988 and 2001 P.F. certificates ..... 350.00



## 1857-60 ISSUE

2018 **1c Blue, Ty. I (18)**. Wide margins for this difficult issue and showing complete design at bottom, radiant color, unobtrusive strike of grid cancel, Very Fine and choice, a beautiful stamp, with 2001 P.F. certificate ..... 650.00



2018



2019

2019 **1c Blue, Ty. Ia (19)**. Position 93R4, choice centering with entire bottom right plume clearly visible, well-struck town datestamp, rich color on bright paper

EXTREMELY FINE. A SUPERB EXAMPLE OF THE RARE 1857 ONE-CENT PERFORATED TYPE IA.

Type Ia was produced by only 18 of the 20 bottom-row positions on Plate 4. Although Plate 4 was designed with sufficient space to accommodate perforations, the height of the top row and bottom row positions resulted in the perforations often cutting into the design at either top or bottom. For this reason, stamps from the bottom row of Plate 4 with the lower part of the design intact or nearly intact are especially desirable. The superbly-centered example offered here is highly desirable, because the bottom perfs barely touch the key elements of the Type Ia design.

With 2002 P.F. certificate ..... 6,250.00

2020 **1c Blue, Ty. II (20)**. Plate 11, beautifully centered with balanced margins all around, brilliant color on post-office fresh paper, neat strike of circular datestamp

EXTREMELY FINE GEM. A SUPERB USED EXAMPLE OF THE PERFORATED ONE-CENT TYPE II FROM PLATE 11. A DIFFICULT STAMP TO FIND IN SUCH CHOICE CONDITION.

When Toppan, Carpenter & Co. decided to make new 1c plates in 1861 (Plates 11 and 12), they used a new transfer roll and chose to enter the nearly complete design, rather than trim the transfers as they had for Plates 5 thru 10. The spacing on the plate left little room for perforations between stamps. Therefore, a wide-margined Plate 11 stamp such as this should be considered a condition rarity.

With 2003 P.F. certificate..... 275.00



2020



2021

2021 **1c Blue, Ty. IIIa (22)**. Plate 4, essentially perfectly centered with wide margins, wide break at top and complete outer line at bottom, deep rich color on bright paper, neat strike of large Boston "Paid" grid cancel

EXTREMELY FINE. A BEAUTIFUL EXAMPLE OF THE 1857 PERFORATED ONE-CENT TYPE IIIA.

With 2000 P.F. certificate ..... 550.00

2022 **1c Blue, Ty. IV (23)**. Recut once at top and once at bottom, rich color on bright paper, gorgeous centering with wide and balanced margins, neat strike of circular datestamp

EXTREMELY FINE. THE 1857 ONE-CENT TYPE IV IS ONE OF THE MOST DIFFICULT TYPES TO FIND IN SUCH CHOICE CONDITION. THIS STAMP IS A TRUE CONDITION RARITY.

Most examples of this issue have perforations either touching or into the recut lines. The example offered here, with intact recut lines at top and bottom, is exceedingly rare.

With 1985 and 2002 P.F. certificates..... 800.00



2022



2023

2023 **3c Rose, Ty. I (25)**. Position 44R6, brilliant color nicely complemented by **blue** 1857 circular datestamp, choice centering for this difficult issue, fresh and Extremely Fine, a marvelous stamp, scarce in such superb condition, with 2001 P.F. certificate..... 127.50



2024

2024 **5c Brick Red (27)**. Brilliant color, beautiful centering with wide and balanced margins and with outer projections completely untouched by the perfs, unobtrusive circular datestamps

EXTREMELY FINE GEM. A SUPERB USED EXAMPLE OF THE 1857 5-CENT BRICK RED. EASILY ONE OF THE FINEST EXAMPLES IN EXISTENCE.

Many collectors know this issue by type and shade, but fewer are aware of the order of production (or release). This state of confusion is partly due to the Scott Catalogue. The distinctive Brick Red shade of the 5c 1857 Issue comes first in the series of Scott-listed perforated 5c issues, but its true release date comes later in the sequence.

Based on dated covers, the 5c Type I shades were released in the following order: 1) Red Brown, Scott 28, EDU 8/23/1857; 2) Indian Red, Scott 28A, EDU 3/31/1858; 3) Brick Red, Scott 27, EDU 10/6/1858; 4) Brown, Scott 29, EDU 3/21/1859, almost certainly the last printing from the first 5c plate. The second 5c plate was made from a new six-relief transfer roll with the design projections cut away at top and bottom, to varying degrees. The Type II Brown was issued first (Scott 30A, EDU 5/4/1860), and the Orange Brown printing from the same plate followed about one year later (Scott 30, EDU 5/8/1861).

The first 5c sheets to be perforated in mid-1857 undoubtedly came from the unissued supply of 5c imperforate sheets in the “1856” Red Brown shade. These are akin to 1c perforated stamps from Plate 1 Late (Type IV, Scott 23) and Plate 2, and 3c perforated stamps from the Type I plate (Scott 25). Covers dated during the second half of 1857 and first quarter of 1858 have 5c stamps in the “1856” shade of Red Brown, which look like Scott 12 with perforations. By March 31, 1858, the EDU of the Indian Red shade, a second printing must have been made. We suspect that the entire family of Red Brown, Bright Red Brown and Indian Red shades — all of which differ from the “1856” Red Brown — were printed at the same time during the first quarter of 1858. No one has established a separate EDU for an “1858” Red Brown (Scott 28) — separated from the earlier perforated “1856” Red Brown, which has the same Scott number — thus our hypothesis cannot yet be supported by an EDU. If we are correct, the “1858” Red Brown and Indian Red should have similar EDU dates.

The Brick Red EDU of October 6, 1858, and its predominant use in early 1859 indicate either a separate printing (3rd Quarter 1858) or a *later release date* for stamps printed earlier. The Brick Red color is so far removed from any of the other 5c shades, we strongly suspect it was made inadvertently while the printers tried to match the earlier 1856 Red Brown. The Brick Red shade is actually closer to some of the 3c 1851 shades than it is to the 5c 1856. Sheets of the irregular 5c shades (Brick Red) would have been added to the stacks along with the subsequent Red Brown, Bright Red Brown and Indian Red sheets. However, when stamps were issued to post offices, the “color corrected” sheets would be released before the “irregular” Brick Red sheets were distributed.

Looking at the EDU’s, there is a largely consistent pattern of new 5c printings at the beginning of each year in 1858 (Red Brown), 1859 (Brown), 1860 (Type II Brown) and 1861 (Type II Orange Brown). The only exceptions to this pattern are the “1856” Red Brown perforated sheets released in mid-1857, which make sense in the context of the first perforated issue, and the October 1858 Brick Red. The Brick Red stamps are much too scarce and limited in their distribution (New Orleans and a few other scattered post offices) to constitute a separate printing in 1858. In our opinion, it makes more sense if they were printed as part of the 1st Quarter 1858 printing, but released later in the year when needed.

Ex Mayer. With 2000 P.F. certificate..... 1,700.00



2025

2025 **5c Indian Red (28A)**. Intense shade and richly-inked impression filling every line with fiery red color, perfectly centered with unusually wide margins at both top and bottom, neat New Orleans circular datestamp cancel

EXTREMELY FINE GEM EXAMPLE OF THE INDIAN RED AT THE MOST EXTREME END OF THE SPECTRUM. A GREAT RARITY IN THIS SUPERB CONDITION AND ONE OF THE FINEST COPIES AVAILABLE.

Ex Dr. Morris. With 1996 and 2002 P.F. certificates. .... 3,500.00

2026 **5c Red Brown (28)**. Unusually deep rich color on bright paper, proof-like impression, light strike of circular datestamp, enormous margins for this issue  
EXTREMELY FINE. A STUNNING USED EXAMPLE OF THE 1857 5-CENT RED BROWN.

With 2002 P.F. certificate ..... 1,150.00



2026



2027

2027 **5c Brown (29)**. Deep shade on crisp paper, almost perfectly centered with wide and balanced margins, neat strike of circular datestamp, Extremely Fine Gem, a beautiful stamp from an issue which is rarely encountered with perfs clear of the design all around, with 1973 and 2002 P.F. certificates.....  
..... 425.00

2028 **5c Brown, Ty. II (30A)**. Brilliant color and crisp impression nicely complemented by **red grid** cancel, gorgeous centering with Jumbo margins at sides  
EXTREMELY FINE GEM. A SUPERB USED EXAMPLE OF THE 1860 5-CENT TYPE II, WITH TREMENDOUS EYE APPEAL.

Ex Mayer. With 1994 and 2003 P.F. certificates.....  
..... 345.00



2028





2029

2029 **10c Green, Ty. II (32)**. Perfectly centered with wide and balanced margins, brilliant color on bright paper, light strike of circular datestamp, fresh and Extremely Fine, a gorgeous stamp, with 1987 and 2003 P.F. certificates .... 300.00

2030 **10c Green, Ty. III (33)**. Unusually wide margins, deep rich color and proof-like impression, neat strike of circular datestamp, Extremely Fine Gem, fabulous color and impression with extraordinarily choice centering and margins, with 2000 P.F. certificate ..... 300.00



2030



2031

2031 **12c Black (36)**. Unusually choice centering for this difficult issue, clear **stitch watermark**, intense shade and impression nicely complemented by **red grid** cancel

EXTREMELY FINE GEM. THE 1857 12-CENT FROM PLATE ONE IS ONE OF THE MOST DIFFICULT ISSUES TO OBTAIN IN SUCH SUPERB CONDITION.

Any multiple of the 1857 12c Black from Plate 1 will demonstrate the narrow layout of this plate, which produced Scott 17 (imperforate) and 36 (perforated). Even when the perforations are aligned between stamps, they still punch out part of the outer frameline. Plate 3, which produced Scott 36b, remedied this problem by allowing more space for perforations.

With 2003 P.F. certificate. Scott Retail with no premium for the stitch watermark ..... 360.00



2032

2032 **24c Gray Lilac (37)**. Choice centering with wide and balanced margins, bright color nicely complemented by bold strike of **red grid** cancel

EXTREMELY FINE. A BEAUTIFUL EXAMPLE OF THE 1860 24-CENT GRAY LILAC. A DIFFICULT STAMP TO FIND WITH THE QUALITIES OF THE EXAMPLE OFFERED HERE — CHOICE CENTERING, BRIGHT COLOR AND A COLORED CANCEL.

With 1986 and 2001 P.F. certificates ..... 440.00



2033

2033 **30c Orange (38)**. Vibrant color as fresh as the day it was printed, crisp white paper, unusually choice centering for this difficult issue, lightly cancelled at top right

EXTREMELY FINE GEM. A GORGEOUS USED EXAMPLE OF THE 30-CENT 1860 ISSUE. AN EXTREMELY DIFFICULT STAMP TO FIND IN SUCH SUPERB USED CONDITION.

The 30c 1860 challenges collectors for several reasons. First, the subjects were closely spaced together on the plate, leaving almost no room for perforations and little opportunity to create stamps with perforations clear of the design on all four sides. Second, the 30c and 90c 1860 were only in circulation for a brief period before the series was demonetized in the Fall of 1861. Third, this high-denomination stamp was issued for use on transatlantic mail, and postal clerks were careful to thoroughly cancel the stamps to prevent cleaning and re-use. Therefore, 30c 1860 stamps in sound, well-centered and lightly-cancelled condition defy all circumstances and are extremely rare.

Ex Renne and Yost. With 1980, 1995 and 2002 P.F. certificates ..... 500.00



2034

**2034 90c Blue (39).** Perfectly centered with wide margins all around, deep rich color and sharp impression, clear strike of black Virginia circular datestamp cancel

EXTREMELY FINE GEM. A SUPERB USED EXAMPLE OF THE SHORT-LIVED 90-CENT 1860 — THE FIRST UNITED STATES 90-CENT ISSUE.

The 90c stamp was issued in 1860, along with the 24c and 30c values, all of which were needed to prepay high international letter rates established by various postal treaties. The basic 24c and 30c rates to England, France and Germany created a large volume of mail franked with those values. However, the 90c saw much more limited use, partly due to the rates in effect, but more because of the American Civil War. When supplies of current postage stamps were declared invalid in the South and ultimately demonetized by the Federal government, the 90c had been in use for only one year. For this reason, genuinely cancelled copies and covers bearing the 90c are extremely rare. Approximately 180 used examples have been certified as genuine by the Philatelic Foundation, of which approximately one-quarter are sound. Of these sound examples, many are off-center.

With 1997 P.S.E. and 1998 and 2006 P.F. certificates ..... 9,000.00

## 1861-66 ISSUE



2035

2035 **3c Rose Pink (64b)**. Brilliant color on bright paper, beautiful centering with wide and balanced margins, unobtrusive strike of grid cancel, long and full perforations all around  
EXTREMELY FINE GEM. A SUPERB USED EXAMPLE OF THE 3-CENT 1861 ISSUE IN THE ROSE PINK SHADE. A STUNNING STAMP IN EVERY RESPECT.

Ex Mayer. With 1995 P.S.E. and 2003 P.F. certificates ..... 160.00



2036

2036 **5c Buff (67)**. Radiant color nicely complemented by **Baltimore Md. blue circular datestamp**, choice centering with perfs clear of outer framelines on all sides

EXTREMELY FINE GEM. A GORGEOUS USED EXAMPLE OF THE 1861 5-CENT BUFF STAMP IN TERMS OF COLOR, CENTERING, PERFORATIONS AND CANCELLATION. EASILY ONE OF THE FINEST IN EXISTENCE.

Ex Mayer. With 1996 and 2003 P.F. certificates ..... 1,070.00



2037

**2037 12c Black (69).** Intense shade and impression on bright paper, choice centering with unusually wide and balanced margins, unobtrusive cancel, long and full perforations all around, Extremely Fine Gem, a superb stamp in every respect, with 1984 and 2001 P.F. certificates ..... 110.00

**2038 24c Red Lilac (70).** Stunning color and proof-like impression on bright paper, Washington's portrait framed by Philadelphia circular datestamp and target with additional red transit datestamp at left  
EXTREMELY FINE GEM. A SUPERB USED EXAMPLE OF THE 24-CENT RED LILAC SHADE IN THE FINEST CONDITION ATTAINABLE.

Ex Hinrichs. With 1993 and 2004 P.F. certificates.  
..... 315.00



2038



2039

**2039 24c Brown Lilac (70a).** Radiant color on bright paper, wide margins, bold strike of large grid cancel, fresh and Extremely Fine, a beautiful stamp, with 1997 and 2001 P.F. certificates ..... 225.00





2040

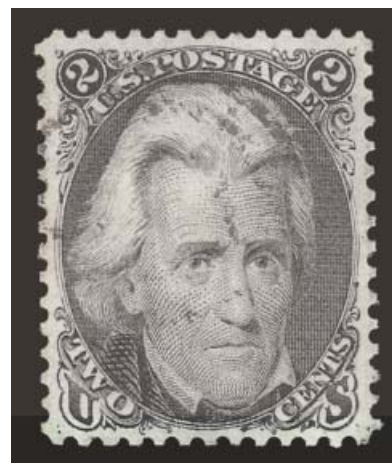
2040 **24c Steel Blue (70b).** Incredibly rich color in the unmistakably true Steel Blue shade, very well-centered, perfectly struck red grid cancel seems to “float” above the stamp  
EXTREMELY FINE GEM. A TRULY OUTSTANDING EXAMPLE OF THE 24-CENT 1861 STEEL BLUE COMBINING THE ESSENTIAL ELEMENTS OF CENTERING, COLOR AND CANCELLATION.  
Ex Mayer. With 1983 and 2003 P.F. certificates ..... 915.00



2041

- 2041 **24c Violet, Thin Paper (70c).** Deep rich color and proof-like impression, choice centering with wide margins on all sides, well-struck large Boston “Paid” grid cancel  
EXTREMELY FINE. A STUNNING USED EXAMPLE OF THE 24-CENT 1861 ISSUE IN THE VIOLET SHADE ON THIN PAPER. A DIFFICULT STAMP TO FIND IN SUCH CHOICE CONDITION.  
With 2001 P.F. certificate..... 1,715.00

- 2042 **2c Black (73)**. Bright shade and crisp impression, choice centering with wide and balanced margins, light strike of target cancel, Extremely Fine Gem, a surprisingly difficult stamp to find in such choice condition, with 1988 and 2003 P.F. certificates ..... 65.00



2042



2043

- 2043 **5c Red Brown (75)**. Remarkably “warm” shade which is not easily confused with any other shade, nicely complemented by bold **blue and red cancels**, choice centering with perforations clear of outer framelines on all sides

EXTREMELY FINE GEM. A SUPERB USED EXAMPLE OF THE 5-CENT RED BROWN 1862 ISSUE.

Ex Hoffner. With 1993 and 2001 P.F. certificates. .... 535.00

- 2044 **5c Dark Brown (76a)**. Deep rich color in the Black Brown sub-shade, detailed impression showing every nuance of the engraving, neat strike of **blue target cancel**, choice centering with wide and balanced margins for this difficult issue

EXTREMELY FINE GEM. A STUNNING EXAMPLE OF THE 5-CENT 1862 ISSUE IN THE BLACK BROWN SHADE.

With 2003 P.F. certificate ..... 280.00



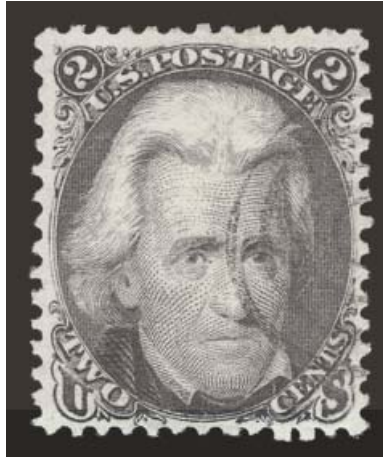
2044

1867-68 GRILLED ISSUE



2045

2045 **3c Rose, C. Grill (83).** Deep rich color, clearly-defined grill, choice centering, cancelled by **Blue Bird fancy cancel of Rockford Ill.**, full perforations all around  
EXTREMELY FINE GEM. WIDELY REGARDED BY STUDENTS OF UNITED STATES STAMPS AS THE FINEST USED EXAMPLE OF THE 1867 3-CENT ROSE C GRILL IN EXISTENCE.  
Ex Welling, Morris and Hinrichs. With 1985, 1994 and 2004 P.F. certificates.. 1,125.00



2046

2046 **2c Black, D. Grill (84).** Intense shade and detailed impression, clearly-defined grill, neat strike of target cancel, choice centering for this difficult issue

EXTREMELY FINE LIGHTLY-CANCELLED EXAMPLE OF THE RARE 1868 2-CENT D GRILL.

The 2c D Grill is the rarest of the regular-production 1867-68 Grilled Issues (excluding the 1867 trials and rarest Z Grills), followed in order of scarcity by the 3c Z Grill, the 3c D Grill and the 12c Z Grill.

It is our theory that two grilling machines were used simultaneously, and that one of the machines was converted from the D to E Grill in early 1868, after a small number of 2c sheets were run through the D-equipped machine. The earliest documented usages of the D Grill (3c 2/2/68) and E Grill (3c 2/12/68) are in close proximity, and the great rarity of 2c D Grills, relative to all other regular-production grills, bears out this theory.

With 2001 P.F. certificate ..... 4,500.00





2047

2047 **3c Rose, D. Grill (85).** Perfectly centered with wide and balanced margins, brilliant color, clearly-defined grill, grid cancel

EXTREMELY FINE GEM. A SUPERB USED EXAMPLE OF THE 1868 3-CENT D GRILL IN THE FINEST CONDITION ATTAINABLE. THIS REMARKABLE STAMP HAS BEEN AWARDED THE GRADE OF SUPERB 98 BY THE PHILATELIC FOUNDATION.

With 2006 P.F. certificate (Superb 98; SMQ for a 98 is \$13,400.00, but the P.S.E. Population Report only lists two 95's and one 95J as the highest grades)..... 1,100.00

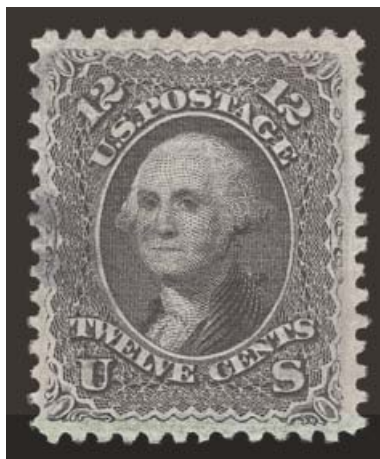


2048

2048 **2c Black, Z. Grill (85B)**. Unusually wide and balanced margins for this difficult issue, intense shade and detailed impression showing every nuance of the engraving, bold strike of target cancel

EXTREMELY FINE GEM. A SUPERB USED EXAMPLE OF THE 1868 2-CENT Z GRILL. A SUPERB STAMP IN EVERY RESPECT, AND EASILY ONE OF THE FINEST IN EXISTENCE.

Ex Engel, "Connoisseur" and Floyd. With 1960, 1992 and 2001 P.F. certificates.. 1,400.00



2049

2049 **12c Black, Z. Grill (85E)**. Superb centering with extraordinarily wide margins all around,  
light **blue cancel**, deep shade

EXTREMELY FINE GEM. A PHENOMENAL USED EXAMPLE OF THE 1868 12-CENT Z GRILL,  
COMBINING CENTERING, MARGIN WIDTH AND A COLORED CANCEL.

Although the 12c Z Grill is the most common of the Z Grills, it is still extremely scarce  
compared to other regular-production grilled issues and is very rarely found in the  
superb used condition.

With 1989 and 2006 P.F. certificates..... 2,400.00



2050

2050 **1c Blue, E. Grill (86).** Perfectly centered with wide and well-balanced margins, brilliant color on bright paper, neat **blue grid** cancel

EXTREMELY FINE GEM. THE 1868 ONE-CENT E GRILL IS ONE OF THE MOST DIFFICULT STAMPS OF THE SERIES TO OBTAIN WITH SUCH CHOICE CENTERING AND IN SUCH PRISTINE CONDITION.

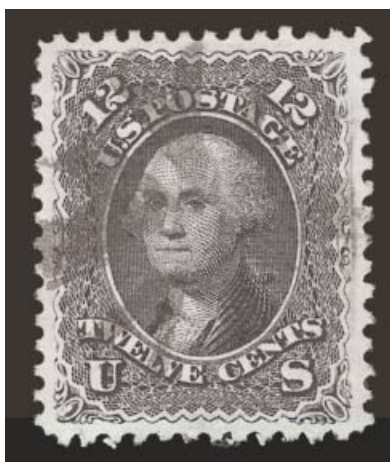
Some time ago we observed that the 1c E Grill appeared at auction very infrequently, in any form. After analyzing the early 1868 regular-production grills (Z, D, E and F), we concluded that grilling of the 1c 1861 issue with the E (and Z) Grill must have been short-lived, occurring sometime around February 28, 1868. Later grilling of 1c stamps was probably done with the F Grill. Relatively little of the 1c E Grill supply appears to have reached the philatelic market, as evidenced by the stamp's scarcity, which may be explained by the fact that so many were used on printed matter and wrappers.

Ex Drucker. With 1981 and 2002 P.F. certificates. .... 460.00

2051 **2c Black, E. Grill (87).** Choice centering, bright shade and crisp impression on fresh paper, lightly cancelled at center, Extremely Fine Gem, a beautiful stamp, with 2003 P.F. certificate ..... 200.00



2051



2052

2052 **12c Black, E. Grill (90).** Gorgeous centering with unusually wide and balanced margins, bright shade and detailed impression, neat strike of circle of V's cancel

EXTREMELY FINE GEM. A SUPERB USED EXAMPLE OF THE 1868 12-CENT E GRILL WITH FANTASTIC EYE APPEAL.

With 1996 P.F. certificate..... 400.00



2053

2053 **15c Black, E. Grill (91).** Almost perfectly centered with wide margins, well-defined grill, detailed impression on bright paper, black cork and trace of red cancel at left

EXTREMELY FINE GEM. VERY FEW EXAMPLES OF THE 1868 15-CENT E GRILLED ISSUE RIVAL THIS BEAUTIFUL STAMP.

With 2000 P.F. certificate..... 675.00





2054

- 2054 **1c Blue, F. Grill (92).** Brilliant color, choice centering with unusually wide margins, clear grill points, neat strike of Chambersburg Pa. circular datestamp, fresh and Extremely Fine, a beautiful stamp, this issue is rarely encountered with the town datestamp used as a cancel, with 2000 P.F. certificate ..... 525.00



2055

- 2055 **5c Brown, F. Grill (95).** Rich color and proof-like impression, clear grill points, perfectly centered with balanced margins, neat strikes of brownish-black target cancel, long and full perforations all around

EXTREMELY FINE GEM. EASILY ONE OF THE FINEST USED EXAMPLES OF THE 1868 5-CENT F GRILL IN EXISTENCE. A SUPERB STAMP IN EVERY RESPECT — COLOR, CANCEL, STRENGTH OF GRILL, CENTERING AND PERFORATIONS.

Whatever has been said about the rarity of choice grades (used or unused) among the ungrilled 5c 1861-63 Issues (Scott 67, 75 and 76) can be underscored and boldfaced for the 1868 5c F Grill. The stamp offered here defies the norm, possessing wide margins all around (simply unheard of) and a lightly struck brownish-black target cancel.

Ex Hinrichs. With 1999 P.F. certificate..... 875.00



2056

2056 **12c Black, F. Grill (97)**. Intense shade and impression on bright paper which “pops” off of the page, light strike of cork cancel and also **red** cancel at bottom, choice centering with huge margins

EXTREMELY FINE. A BEAUTIFUL USED WIDE-MARGINED EXAMPLE OF THE 1868 12-CENT F GRILL.

With 2000 P.F. certificate ..... 325.00

2057 **15c Black, F. Grill (98)**. Choice centering with well-balanced margins, bright shade with detailed impression, segmented cork cancel and also part of **red** cancel at bottom left

EXTREMELY FINE GEM. THE 1868 15-CENT F GRILL IS AN EXCEEDINGLY DIFFICULT STAMP TO FIND IN SUCH SUPERB CONDITION. A TRUE CONDITION RARITY AND ONE OF THE FINEST IN EXISTENCE.

Most examples of the 15c 1866 and 1868 Grilled Issue have small margins. It is almost never found with the wide margins more typically seen on the 12c E and F Grills. Most 15c stamps are also heavily cancelled, obliterating large portions of the design. The example offered here, with well-balanced margins and a cancel which leaves the design clearly visible, is surely among the finest in existence.

With 1990 P.F. certificate ..... 450.00



2057



2058

2058 **24c Gray Lilac, F. Grill (99)**. Rich color on bright paper, clearly-defined grill, bold strike of unusual segmented grid cancel, choice centering

EXTREMELY FINE. A STUNNING USED EXAMPLE OF THE 1868 24-CENT F GRILL.

With 2003 P.F. certificate ..... 1,300.00



2059

2059 **30c Orange, F. Grill (100).** Vibrant color as fresh as the day it was printed (a rarity for a used stamp), clearly-defined grill which is readily apparent on the front of the stamp, Jumbo margins which are especially wide at sides, unobtrusive and face-free cancel  
EXTREMELY FINE GEM. THIS IS EASILY THE WIDEST-MARGINED EXAMPLE OF THE 1868 30-CENT F GRILL WE HAVE EVER ENCOUNTERED. A GORGEOUS STAMP IN EVERY RESPECT.  
Ex Hinrichs. With 1990 P.S.E. and 1999 P.F. certificates. Scott Catalogue notes that "Values for No. 100 are for copies with small margins, especially at sides. Large-margined examples sell for much more."..... 900.00



2060

2060 **90c Blue, F. Grill (101)**. Deep rich color on bright paper, complemented by face-free cork cancel, clear grill, well-proportioned margins

EXTREMELY FINE GEM. A GORGEOUS USED EXAMPLE OF THE 1868 90-CENT F GRILL.

The 90c stamps used to make grilled issues were printed on a thick stock of paper. It is likely that sheets remaining from the pre-grill period were used and that the thinner paper introduced in 1868 had not been used for the 90c value. Two characteristics of 90c F Grill stamps are poorly punched perforations and generally bad centering. This stamp is a remarkable exception.

With 2000 P.F. certificate ..... 1,900.00

1869 PICTORIAL ISSUE

- 2061 **6c Ultramarine (115)**. Jumbo margins, brilliant color on blindingly bright paper, neat strike of target cancel leaves design clearly visible  
EXTREMELY FINE GEM. A HUGE EXAMPLE OF THE 6-CENT 1869 PICTORIAL ISSUE.  
Ex Hinrichs. With 2000 P.S.E. and 1990 and 2004 P.F. certificates ..... 250.00



2061



2062

- 2062 **15c Brown & Blue, Ty. I (118)**. Enormous even margins all around, bright colors and proof-like impressions, fancy rosette cancel  
EXTREMELY FINE GEM USED EXAMPLE OF THE 15-CENT TYPE I 1869 PICTORIAL ISSUE. A SUPERB STAMP THAT MUST SURELY RANK AMONG THE FINEST EXTANT.  
With 2004 P.F. certificate..... 750.00

- 2063 **30c Ultramarine & Carmine (121)**. Perfectly centered with wide and balanced margins, brilliant colors and detailed impressions, bold cork cancel struck at bottom leaves design clearly visible  
EXTREMELY FINE. A BEAUTIFUL AND FRESH USED EXAMPLE OF THE 30-CENT 1869 PICTORIAL ISSUE. WORTHY OF INCLUSION IN THE FINEST COLLECTION.  
With 1993 and 2004 P.F. certificates ..... 550.00



2063

END OF SALE — THANK YOU



## Live Internet Bidding at Siegel Auction Galleries

Internet Floor Bidding for Robert A. Siegel Auction Galleries, Inc.'s Sale 908 closing on Mar 13-15, 2006. Contact us by Phone at (212) 753-6421. [Contact us Via eMAIL](#). Please READ [Instructions/Help](#) [Listen to the Public Auction Broadcast](#). Welcome John  
Bidding. Paddle 11. Time: 13:50:36. F11 (if using Internet Explorer) toggles full screen mode. You are Cust# . You are approved for

Lot and Description	Bidding
Postal History, California Mails and Western Expre Carriers and Locals Group Lots <b>Lot 5010.</b> Carriers and Locals. More than 30 covers and a few off cover, 1840's, 50's and 60's, comprising General Issue Carriers incl. LO2, LO3, LO5 and Franklin plate proof on card, LO2 on small blue cover to Philadelphia "U.States" indicating origin f E. 1,500-2,000  <b>Sold for 3,500.00</b> <b>Your Bid 3,500.00</b>  <input type="button" value="1 sec refresh"/> <input type="button" value="3 sec"/> <input type="button" value="5 sec"/> <input type="button" value="Show Images"/>	<input type="button" value="Bid 3750"/> <input type="button" value="Bid 4000"/> <input type="button" value="Bid 4250"/> <input type="button" value="Bid 4500"/> <input type="button" value="Bid 4750"/> <input type="button" value="Bid 5000"/> <a href="#">Send a Message to the Auction Floor</a>

Messages from the public auction  
Please close this form when you are not bidding or watching the auction.

Lot 5010 going for 650...  
Lot 5010 going for 3500...  
Lot 5010 Last Call at 3500...  
Lot 5010 sold to the floor for \$3500.

\*\*\*\*\* END OF SALE \*\*\*\*\*

-Thank You!!!

**Siegel Auction Galleries, in coordination with Stamp Auction Network, will broadcast our auctions live over the internet, allowing you to listen to the auction in progress.**

Bidders who have pre-registered for Live Internet Bidding will also be able to place bids over the internet, as if bidding in the saleroom. In order to bid by internet, you must be an approved, registered bidder with Stamp Auction Network and Siegel Auction Galleries.

- q If you are already registered at Stamp Auction Network and have been approved for internet bidding by Siegel, just log in at Stamp Auction Network, locate the Siegel sale and start bidding anytime during the auction.**
- q If you have never registered as a bidder at Stamp Auction Network, then please go to [www.siegelauctions.com/IB2.htm](http://www.siegelauctions.com/IB2.htm) and click on "Register" at the top of the page. Please check the box for Robert A. Siegel Auction Galleries (under "R") and submit the form. If you have never bid with our firm, please provide trade references whom we may contact to have your account approved (please do not use family members or credit cards as references).**
- q If you have registered previously at Stamp Auction Network, but not specifically for our firm, please go to [www.siegelauctions.com/IB2.htm](http://www.siegelauctions.com/IB2.htm) and click on "Update Registration" at the top of the page. Your information at Stamp Auction Network will be sent to us for approval. You may be asked to provide additional references before being approved for internet bidding.**

Once you are approved for bidding, you will be able to bid live over the internet during the auction. You may participate in Live Internet Bidding using any browser or operating system. The audio portion is only available to PC users using Internet Explorer. For the audio portion, you will be asked to install a piece of software (ActiveX control) to make it work.

Bidders must log in at Stamp Auction Network to participate. Once logged in, please locate the page for the current Siegel auction.

At the top of the auction's home page there are two links:

- One link allows anyone to listen to the public auction broadcast.
- The second link permits registered bidders to join the public auction in progress.

Please remember that to participate in the auction, you must be pre-registered at Stamp Auction Network and approved by Siegel Auction Galleries as a bidder. Qualified bidders will see a page like the one illustrated above and have a valid paddle number assignment.

# Bid Form—15% Premium Sale

Sale 943

Thursday, October 4, 2007

1

Please provide the following information:

NAME.....  
ADDRESS.....  
CITY/STATE/ZIP.....  
TEL. (DAY)..... FAX.....  
E-MAIL.....

PADDLE #

*Do not write in box*

2

Have you purchased from us in the past 5 years?

**Q** YES (if so, please go to Section 3)

**Q** NO (please provide a trade reference and bank information)

References:

Stamp Firm:..... Telephone .....

3

In the space provided below, enter the **lot number** from **Sale 943** and your corresponding bid. Please use **whole dollar amounts** only and enter the **maximum bid** you wish to have us execute on your behalf, according to the **revised bidding increments** (on other side of this form). **Your bid will NOT include the 15% buyer's premium.** We will advance the bidding at one increment over the next

highest bid; therefore, you may be awarded the lot at less than your maximum bid. Please do not use "plus" bids or "buy" bids. If you wish to bid on one lot **or** the other, indicate your "or" bid between lot number/bid entries and bracket your choices. If you wish to place a **bidding limit** on the total amount of your bids, please enter your limit in the space marked "Limit Bids".

## PLEASE NOTE REVISED BIDDING INCREMENTS (ON BACK OF THIS PAGE)

**Q LIMIT BIDS:** Check this box if you wish to limit the total amount of your bids (not including the **15% buyer's premium**) in this sale. Your bids will be executed until your bidding limit no

\$.....

Lot	Bid	Lot	Bid	Lot	Bid
	\$		\$		\$

4

**AGREEMENT:** By signing this bid form, you agree to pay for purchases resulting from your bids, in accordance with the **Conditions of Sale** printed in the sale catalogue. You also agree to pay the **15% buyer's premium** and any shipping costs (see reverse), which will be added to your successful bids, and any sales tax or use tax which may be due on

the total invoiced amount. It is understood that these bids will be executed by Siegel Auction Galleries as a courtesy to absentee bidders, but that no legal responsibility shall lie with the auctioneer or the firm if these bids are not executed. **You are responsible for your written bids, including any errors on your part.**

**Payment must be made by cash, check, money order or wire transfer. Credit cards will not be accepted.**

SIGNED..... TODAY'S DATE.....

5

Please submit your bids promptly (telephone bids must be confirmed in writing).

**Mail to: Robert A. Siegel Auction Galleries, Inc.**

**60 E. 56th Street, 4th Floor, New York, N.Y. 10022**

**Telephone (212) 753-6421**

**OR FAX YOUR BIDS: (212) 753-6429**

**Shipping Instructions, Bidding Increments and space for additional bids on other side of form**

Lot	Bid	Lot	Bid	Lot	Bid
	\$		\$		\$

## Shipping and Transit Insurance

We will be pleased to arrange for shipping and transit insurance for purchases in this sale (except those described as “floor sale only”). To expedite billing and delivery of lots to hundreds of buyers per sale, we use standard charges for postage and insurance, based on the invoiced total and mailing requirements (see schedule). The standard charges are sometimes slightly more or less than the actual postage, but we do not include any fees for our labor or packing costs. Therefore, we ask all buyers to remit the prescribed amount for shipping charges.

Transit insurance is provided in all cases, except when the buyer has furnished us with proof that insurance coverage is effective under another policy. Proof, in such cases, will be accepted in the form of a written certificate from the insurance carrier.

You are responsible for insurance charges, which will be added to your invoice. This coverage is provided for our mutual protection against theft or loss in transit.

## REVISED Bidding Increments

The auctioneer may regulate the bidding at his discretion. However, to assist absentee bidders in establishing their maximum bid for each lot, the increments shown at right will be used in most cases. We recommend that written bids conform to these increments (those which do not will be reduced to the next level).

## Current Postage & Insurance Charges

Invoice Total	Shipping Method	Charges
Up to 10,000	Fedex Only	\$18.00
Over \$10,000	Fedex Only	\$25.00*
Foreign Destinations (any value)	Fedex/Courier	\$25.00**
Bulk Lots	UPS Preferred	By weight and value (min. \$25.00)
<b>*Insurance and postage on certain heavy or valuable packages may incur an additional charge.</b> <b>**Buyers are liable for all customs duties and clearance charges. An accurate declaration of value</b>		

## IMPORTANT NOTICE REGARDING IRRADIATION

**The U.S. Postal Service policy of irradiating all classes of mail poses a significant potential risk of irreversible damage to philatelic material, including ink, paper and gum.**  
**WE WILL NOT USE THE MAILOS TO SHIP LOTS.**

Up to \$50	\$5	\$3,000-7,000	\$250
\$50-200	\$10	\$7,000-20,000	\$500
\$200-500	\$25	\$20,000-30,000	\$1,000
\$500-1,000	\$50	\$30,000-75,000	\$2,500
\$1,000-3,000	\$100	\$75,000 up	\$5,000

## Robert A. Siegel Auction Galleries, Inc.

## Prices Realized for

## Sale 943 10/4/2007 The Scarsdale Collection, Part Five: Superb Used 1847-69 Issues

Lot#	Realized	Lot#	Realized
2001	3,000	2037	1,100
2002	4,250	2038	3,500
2003	375,000	2039	1,300
2004	37,500	2040	12,000
2005	27,000	2041	7,500
2006	850	2042	1,300
2007	14,000	2043	4,750
2008	2,300	2044	4,500
2009	2,700	2045	16,000
2010	1,000	2046	13,000
2011	325	2047	16,000
2012	1,600	2048	15,500
2013	2,000	2049	21,000
2014	2,500	2050	7,500
2015	850	2051	2,000
2016	6,250	2052	3,500
2017	1,700	2053	2,900
2018	950	2054	6,750
2019	24,000	2055	20,000
2020	2,600	2056	2,300
2021	1,400	2057	3,750
2022	3,750	2058	4,500
2023	1,300	2059	9,000
2024	7,500	2060	4,750
2025	22,000	2061	5,250
2026	2,500	2062	10,500
2027	2,700	2063	4,250
2028	3,750		
2029	2,000		
2030	850		
2031	2,100		
2032	2,000		
2033	2,700		
2034	37,500		
2035	3,250		
2036	16,000		