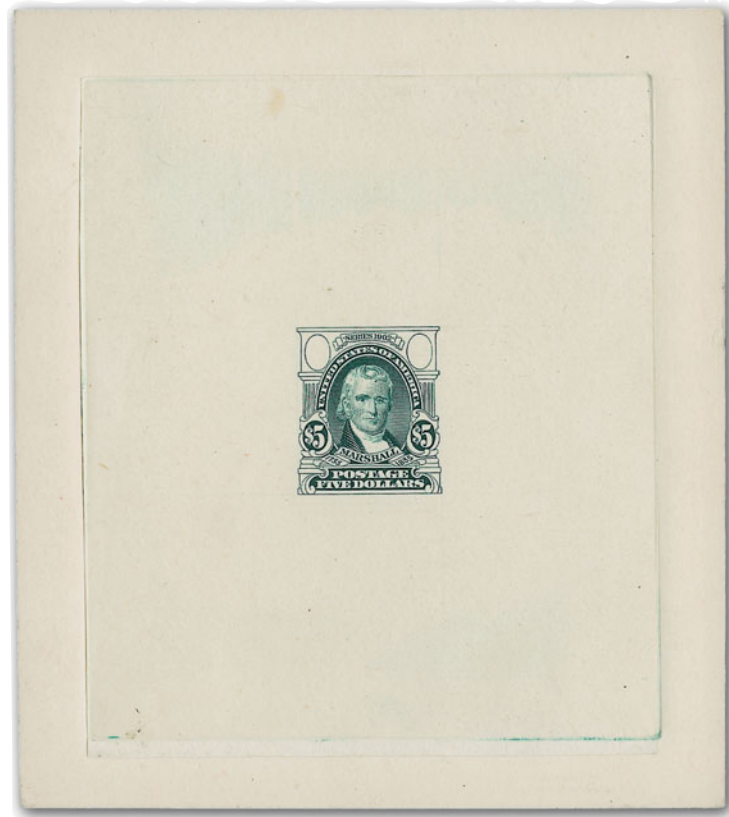


Sale 873

Friday, March 12, 2004

The Cheshire Collection of United States 1902-08 Issues



Robert A. Siegel

AUCTION GALLERIES, INC.

www.siegelauctions.com

Sale 873

Friday, March 12, 2004



Lot 3050

The Cheshire Collection of United States 1902-08 Issues

Offered by the owner without reserves

Pre-sale exhibition

Monday, March 8 — 10:00 a.m. to 4:00 p.m.
Tuesday, March 9 — 10:00 a.m. to 4:00 p.m.
or by appointment (please call 212-753-6421)

**On-line catalogue, e-mail bid form, resources and
the Siegel Encyclopedia are available on our web site:**

www.siegelauctions.com

Arrangement of Sale

Afternoon session (lots 3001-3123)

**Friday, March 12, at approximately 4:30 p.m.
following the last session of Sale 872**

Essays and Proofs	pages 5-16
Issued Stamps	17-29
Private Vending & Affixing Machine Perfs..	30-32
Booklet Panes.....	32-33
Stamp Group Lots	34
1902-08 Issues on cover.....	35-41
Offices in China	42
Canal Zone	43
Philippines	43-46

On the cover

Front Cover: Lot	3022
Back Cover: Lot	3098

The Cheshire Collection of United States 1902-08 Issues



THE 1902 SERIES WAS THE FIRST SET OF REGULAR ISSUES DESIGNED by the Bureau of Engraving and Printing. In 1894, when the Bureau took over stamp production, they had simply modified the existing American Bank Note Company designs by adding triangles to the framework. Eager to impress the public with its own definitive series, the Bureau created an entirely new set of sixteen designs, each entitled “Series 1902”. The stamps’ creation coincided with the start of a new century, the Theodore Roosevelt administration, the emergence of the United States as a global power, and the spread of technology in everyday life. All of these circumstances influenced the design and use of the 1902-08 Issues.

Fourteen regular-issue designs and one special-delivery design were produced for the original 1902 Series. Only the 8c, 13c and 10c Special Delivery were actually issued in 1902. The other values were not released until early 1903. The new designs were generally well-received, but the 2c was harshly criticized, because the highly-detailed engraving was poorly conveyed by the Carmine color. In response to the unfavorable reviews, the Bureau redesigned the 2c and issued the Shield stamp in late 1903. The 1902 Series remained current until late in 1908, when the first stamps of the Washington-Franklin series were issued.

The 1902 Series is a fertile field for stamp and cover collectors. In addition to the basic stamps issued in sheet form, supplies of imperforate sheets and coils were sent to vending- and affixing-machine manufacturers for use in their popular stamp-dispensing equipment. Booklet panes, which debuted in 1900 with the 2c 1898 design, gained in popularity with the 1902-08 Issues. Overprints were applied to sheets for distribution to the Canal Zone and the Philippines during the period when these territories fell under United States control. The U.S. Postal Agency in Shanghai also received supplies of the 1902 Series for use by local residents and businesses in China.

The Cheshire collection succinctly and successfully tells the story of the 1902 Series, beginning with the development of the designs and carrying on with a diverse display of philatelic varieties and postal usages. Assembled anonymously under the guidance of the late Lynne Warm-Griffiths, the Cheshire collection was exhibited a few times in the early 1980’s. Since then, it has not been seen, and its existence was known only to a small group of specialists. With the emergence of the Cheshire collection comes the opportunity to acquire unique die essays, extremely rare large die proofs and dollar-value covers that have been unavailable to the market for 20 years or more.

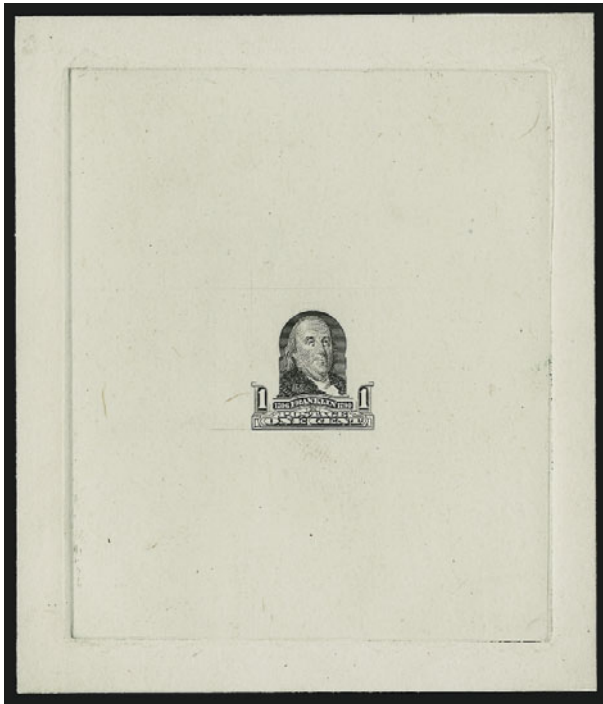
We applaud the collector behind the Cheshire collection, and we pay tribute to Lynne Warm-Griffiths, whose knowledge and keen eye for the unusual so obviously influenced the formation of this significant collection.

—SCOTT R. TREPEL

AFTERNOON SESSION (LOTS 3001-3123)
FRIDAY, MARCH 12, 2004, AT APPROXIMATELY 4:30 P.M.
(IMMEDIATELY FOLLOWING SALE 872)

THE CHESHIRE COLLECTION OF
UNITED STATES 1902-08 ISSUES

ESSAYS AND PROOFS



3001

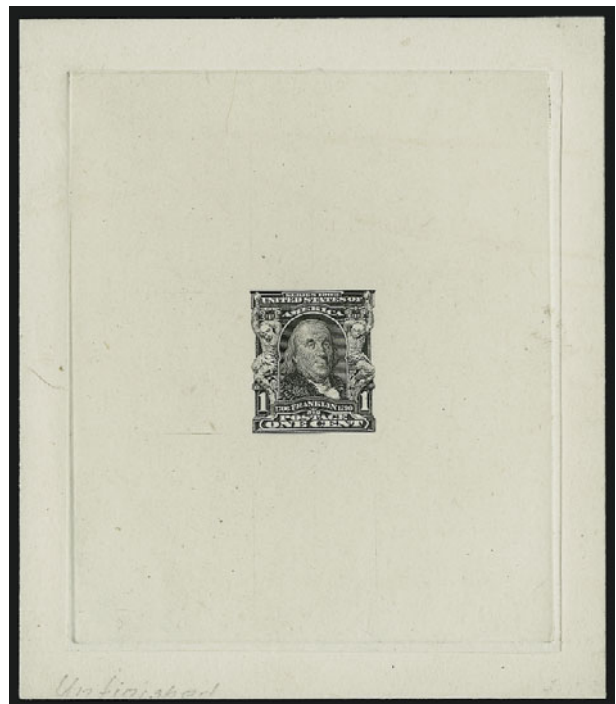
3001 E **1c Black, Large Die Essay on India (300-E1).** Die sunk on 90 x 105mm card, incomplete engraving of vignette and lower part of frame
VERY FINE. THE ONLY RECORDED EXAMPLE OF THIS PROGRESSIVE DIE ESSAY.

This striking essay is the least complete of the 1c 1902 progressive die states. 2,000.00

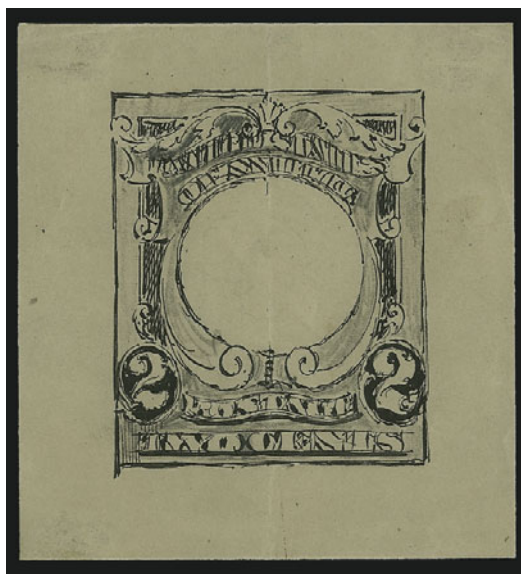
3002 E **1c Black, Large Die Essay on India (300-E2).** Die sunk on 90 x 105mm card, unfinished design lacks shading lines in frame, neckpiece and vignette background

VERY FINE. ONLY ONE IMPRESSION OF THIS INCOMPLETE DIE IS REPORTED TO EXIST.

The corresponding 319-E3 die essay in Shreve's sale of the Brody collection realized \$4,000 hammer versus \$2,000 Scott value. This equally rare 301-E3 die essay seems undervalued in the current Scott Catalogue in light of the Brody realization. 1,250.00



3001

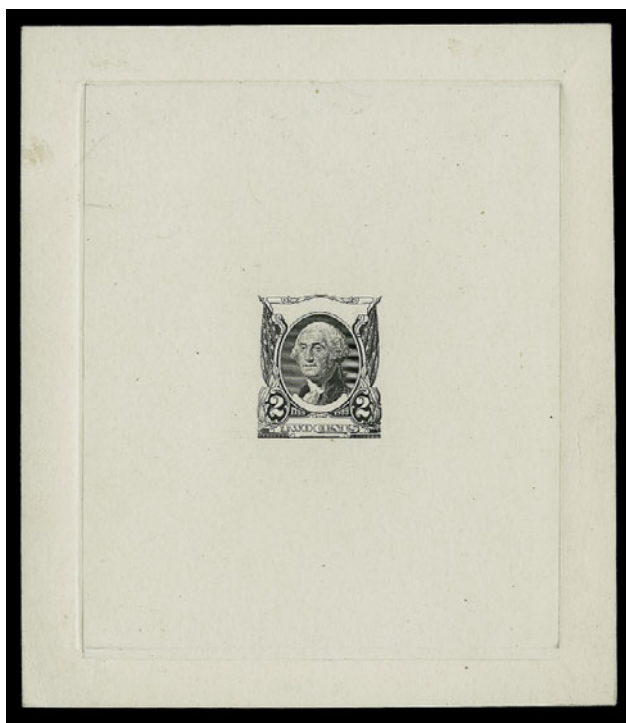


3003

3003 E **2c Washington, Preliminary Pencil-and-Ink Drawing for Frame Design (Unlisted in Scott; should be 301-E1B).** 77 x 82mm yellowish wove paper, folded vertically, half of reverse with ink tracing of frame only

A UNIQUE ARTIST'S SKETCH OF THE LETTERING AND FRAME AS INTENDED FOR THE 2-CENT 1902 ISSUE.

A similar pen-and-ink sketch for the 1c 1902 is listed in Scott as 300-E4 and was offered in Shreve's Brody sale (realized \$2,700 hammer). This 2c sketch is not listed in Scott, but would logically follow the pencil sketches listed as 301-E1 and E1A. E. 2,000-3,000



3004

3004 E **2c Black, Large Die Essay on India (301-E3).** Die sunk on 92 x 105mm card, incomplete design with head unfinished, missing horizontal background lines, unfinished frame and lettering

VERY FINE. THIS THE ONLY RECORDED EXAMPLE OF THE 2-CENT FLAGS DIE ESSAY.

The corresponding 2c Shield progressive die essay realized \$4,000 hammer in the Shreve's Brody sale. The current Scott value for 301-E3 seems inadequate. 1,250.00

- 3005 E **2c Washington, Photographic Essay of Unaccepted Design (301-E unlisted).** Directly on 45 x 50mm photo-sensitive paper, significant differences incl. lettering and use of laurels around portrait instead of flags, slight crease above image, otherwise Very Fine, extremely rare..... E. 300-400



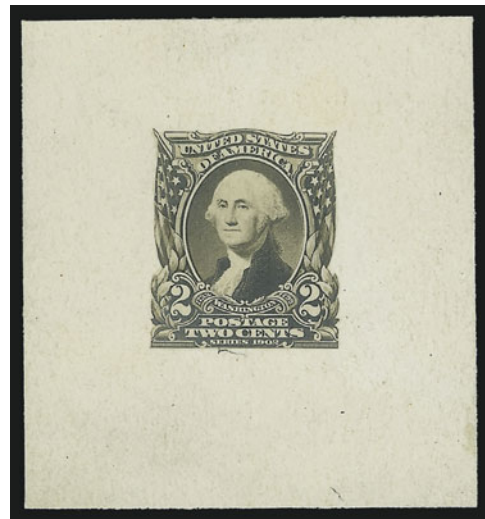
3005



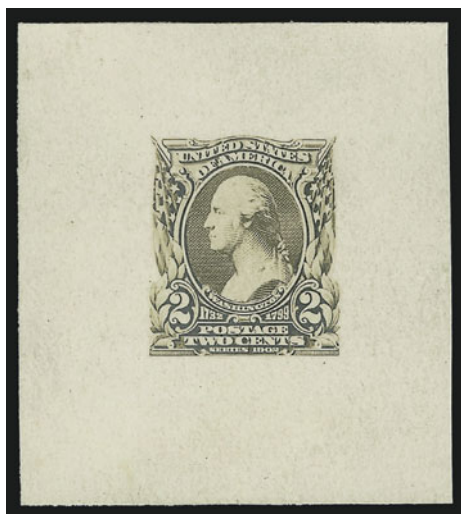
3006

- 3006 E **2c Washington, Photographic Essay of Unaccepted Design (301-E unlisted).** Directly on 45 x 48mm photo-sensitive paper, striking essay with Washington vignette from 1894-98 series (lettering and frame identical to essay in lot 3005), numerous tiny pinholes within image, unnoticeable and otherwise Very Fine, extremely rare..... E. 300-400

- 3007 E **2c Washington, Photographic Essay of Unaccepted Design (301-E unlisted).** Directly on 45 x 50mm photo-sensitive paper, flags around vignette but differences in portrait size and lettering, Very Fine, a striking and rare essay E. 300-400



3007



3008

- 3008 E **2c Washington, Photographic Essay of Unaccepted Design (301-E unlisted).** Directly on 44 x 50mm photo-sensitive paper, Washington vignette from 1894-98 series, surrounded by flags but other differences in lettering, Very Fine and extremely rare..... E. 300-400

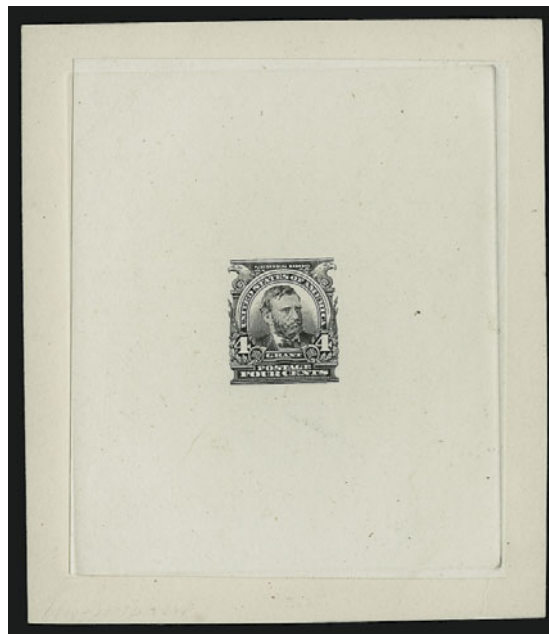


3009

3009 E **3c Black, Large Die Essay on India (302-E1).** Die sunk on 90 x 105mm card, unfinished design lacking horizontal background lines in vignette, missing shading lines in neckpiece and figures at sides, Bureau blue control no. 66218 on back

VERY FINE. THE ONLY RECORDED EXAMPLE OF THE 3-CENT PROGRESSIVE DIE ESSAY.

This is the only progressive state of the 3c 1902 die listed in Scott, and this impression is reported to be the only example extant. The current Scott value is far below the \$3,000-4,000 realizations for other similar essays in Shreve's sale of the Brody collection..... 1,750.00

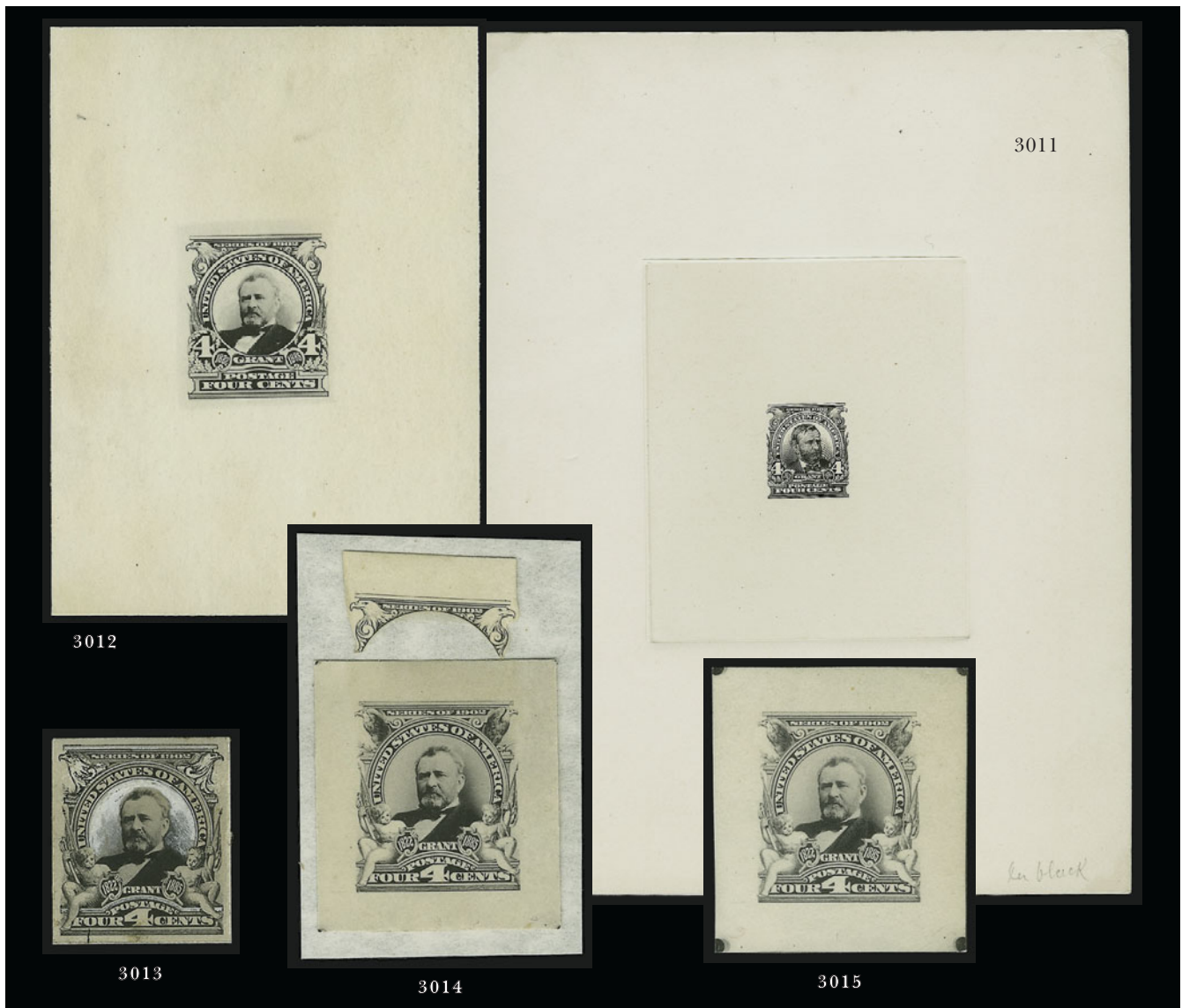


3010

3010 E **4c Black, Large Die Essay on India (303-E1).** Die sunk on 90 x 105mm card, unfinished design lacking shading lines in portrait and frame around vignette vignette, Bureau blue control no. 58920 on back

VERY FINE. THE ONLY RECORDED 4-CENT PROGRESSIVE DIE ESSAY.

This is the only progressive state of the 4c 1902 die listed in Scott, and this impression is reported to be the only one known. The current Scott value is far below the \$3,000-4,000 realizations for other similar essays in Shreve's sale of the Brody collection..... 1,750.00

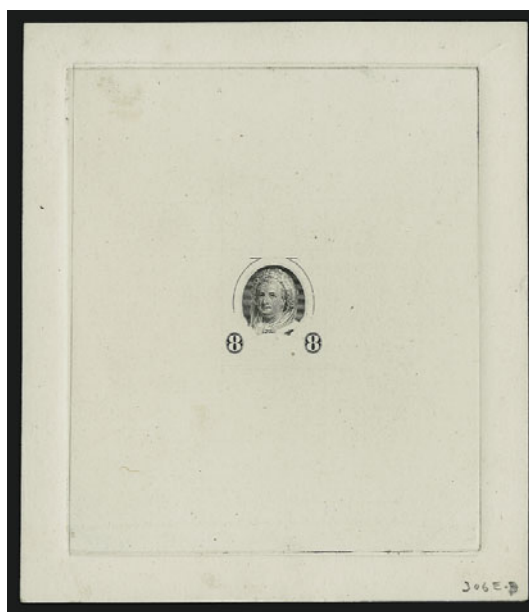


- 3011 E **4c Black, Large Die Essay on India (303-E unlisted).** Die sunk on 150 x 200mm card, engraving almost complete as issued except for shading lines in top of frame, Bureau blue control no. 60085 on back
VERY FINE. AN UNLISTED AND SIGNIFICANT PROGRESSIVE DIE ESSAY FOR THE 4-CENT 1902 ISSUE.
The subtle difference between this progressive die essay and the issued design is found in the frame just above "Series 1902" at top, where the tiny vertical shading lines are omitted..... E. 2,000-3,000
- 3012 E **4c Grant, Photographic Essay of Unaccepted Design (303-E unlisted).** Directly on 58 x 80mm photo-sensitive paper, Grant portrait facing left and differences in frame, Very Fine, extremely rare E. 300-400
- 3013 E **4c Grant, Photographic Essay of Unaccepted Design with Pen-and-Wash Drawing (303-E unlisted).** Stamp size photo-sensitive paper, white wash inside vignette, eagles at corners drawn in pen over erased portions of photo, stray ink line at bottom, Very Fine, certainly unique..... E. 750-1,000
- 3014 E **4c Grant, Photographic Essay of Unaccepted Design, Additional Overlay of Top of Frame (303-E unlisted).** Directly on 27 x 31mm photo-sensitive paper, Grant's portrait facing left, additional cut-out photo-essay of top portion of frame with eagles as drawn on previous essay, both affixed to paper, Very Fine, a unique composition, illustrated in Johl..... E. 500-750
- 3015 E **4c Grant, Photographic Essay of Unaccepted Design (303-E unlisted).** Directly on 30 x 33mm photo-sensitive paper, position dots at corners, Grant's portrait facing left and different frame design, Very Fine, extremely rare E. 300-400



3016

3016 E **8c Martha Washington, Pencil Drawing of Left Side of Frame by R. Ostrander Smith (306-E1).** 95 x 200mm tracing paper, lower left corner with numeral and outline letters, laurel to left of vignette, Very Fine, a unique drawing signed by the designer of the 1902-03 Issue, R. Ostrander Smith, illustrated in Johl... 500.00



3017

3017 E **8c Black, Large Die Essay on India (306-E2).** Die sunk on 93 x 105mm card, incomplete engraving of vignette and numerals

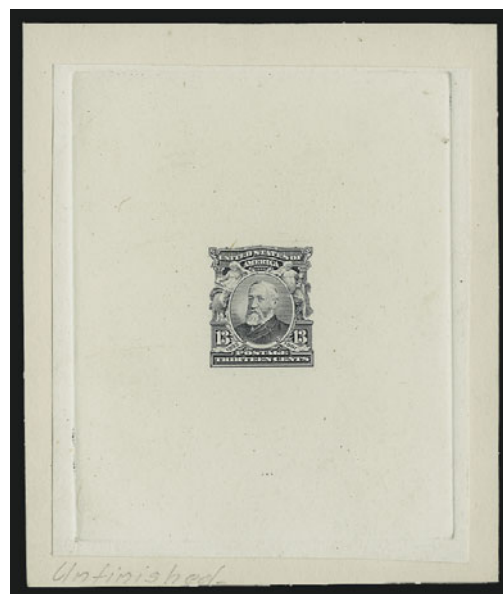
VERY FINE. THE ONLY RECORDED EXAMPLE OF THIS PROGRESSIVE DIE ESSAY.

This striking essay is the least complete of the 8c 1902 progressive die states..... 2,000.00

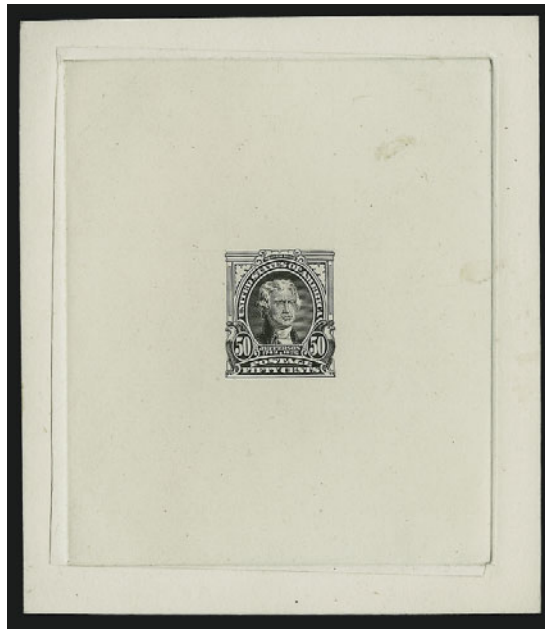
3018 E **13c Black, Large Die Essay on India (308-E1).** Die sunk on 85 x 105mm card, unfinished design with blank "Harrison" label, incomplete shading and other differences, Bureau blue control no. 57796 on back

VERY FINE. THIS IS THE ONLY RECORDED EXAMPLE OF THE 13-CENT PROGRESSIVE DIE ESSAY.

The control number of this essay impression is noted in the listing for 308-E1. The Scott value of \$1,250.00 is well below the \$3,000-4,000 realizations for similar essays in Shreve's sale of the Brody collection. 1,250.00



3018

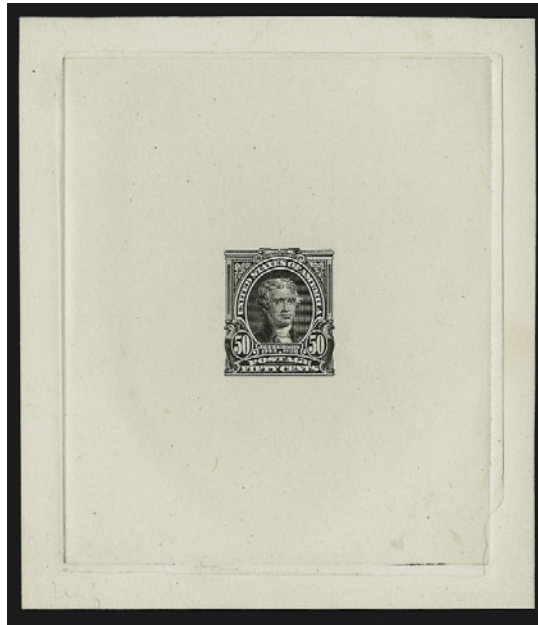


3019

- 3019 E **50c Black, Large Die Essay on India (310-E1).** Die sunk on 90 x 105mm card, incomplete engraving of entire design with many lines missing in vignette, frame and portrait, two small scuffs in India paper at upper right

VERY FINE. THE ONLY KNOWN EXAMPLE OF THIS SPECTACULAR PROGRESSIVE DIE ESSAY FOR THE 50-CENT 1902 ISSUE.

There are two progressive die essays for the 50c 1902 Issue (Scott 310-E1 and E2). This is the less complete state; the other is offered in the following lot. Each is unique. 2,000.00

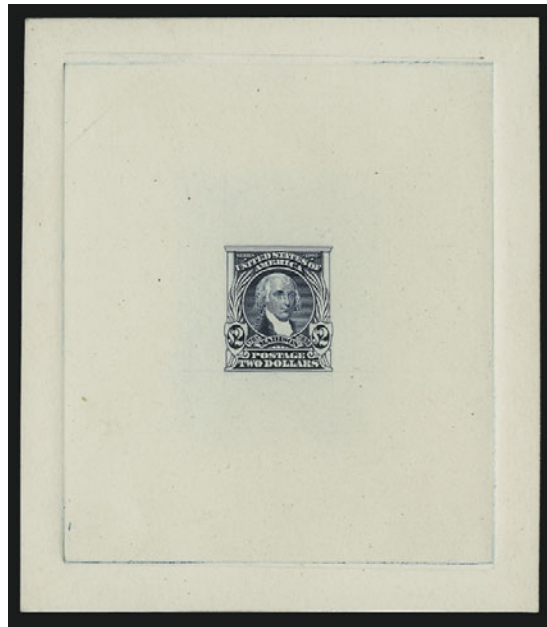


3020

- 3020 E **50c Black, Large Die Essay on India (310-E2).** Die sunk on 89 x 103mm card, almost complete engraving — we note shortened shading lines in leaf ornaments at upper right and left — small piece of bottom right corner of India paper torn off

VERY FINE. ONE OF TWO SCOTT-LISTED PROGRESSIVE DIE ESSAYS AND THE ONLY RECORDED EXAMPLE OF THIS NEARLY-FINISHED STATE.

The essay offered in the previous lot and this nearly-finished engraving are the only two known die essays for the 50c 1902 Issue. Each is unique. 2,000.00

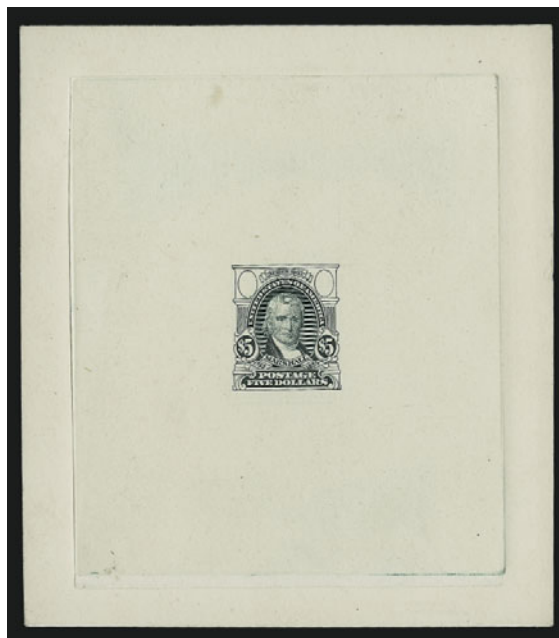


3021

3021 E **\$2.00 Dark Blue, Large Die Essay on India (312-E1).** Die sunk on 90 x 105mm card, numerous lines absent from frame and portrait

VERY FINE. AN EXTRAORDINARY AND UNIQUE PROGRESSIVE DIE ESSAY OF THE \$2.00 1902 ISSUE. ONE OF THE MOST OUTSTANDING OF ALL BUREAU ISSUE ESSAYS AND PROOFS.

This is the only recorded die essay for the \$2.00 1902 Issue. It is described correctly in Brazer as Dark Blue ("unique"), but the Scott Catalogue incorrectly describes the color as Black. 2,000.00



3022

3022 E **\$5.00 Dark Green, Large Die Essay on India (313-E1).** Die sunk on 94 x 105mm card, significantly incomplete engraving with blank ovals at top, many shading lines absent in frame and vignette

VERY FINE. THIS IS THE UNIQUE PROGRESSIVE DIE ESSAY FOR \$5.00 1902 ISSUE AND ONE OF THE MOST DESIRABLE BUREAU ISSUE ESSAYS EXTANT.

This state of the die is among the least complete of all 1902 Issue essays. There are no other known progressive die impressions for the \$5.00 value. 1,750.00



3023EX

3023 P **1c-\$5.00 1902-03 Issue, Large Die Proofs on India (300P1-313P1).** Each die sunk on $5\frac{3}{4}$ x $7\frac{3}{4}$ in. card, fresh and bright, slight abrasion along left edge of each card (probably from removal of protective tissue), a few cards with mounting scuffs or remnants on back, several have transparent scotch-tape remnants that have not stained the card but should be removed for conservation purposes

VERY FINE. ONE OF THREE RECORDED COMPLETE SETS OF 1902-03 ISSUE LARGE DIE PROOFS.

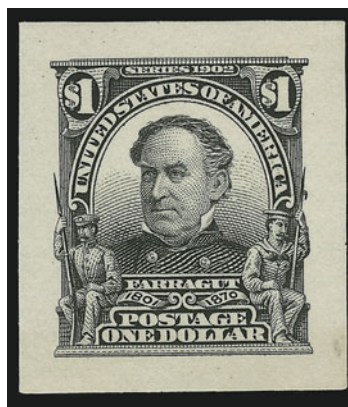
The Bureau control number backstamps (in blue) are as follows: 1c—348932, 2c—348953, 3c—349943, 4c—349070, 5c—349738, 6c—349099, 8c—349130, 10c—349153, 13c—349179, 15c—349196, 50c—349219, \$1.00—349243, \$2.00—349259 and \$5.00—349279.

According to Lewis Kaufman, a highly-regarded dealer and Bureau specialist, there are three recorded sets of 1902-03 Issue large die proofs: Set 1) full cards, ex Franklin D. Roosevelt collection; Set 2) full cards, the set offered here; and Set 3) full cards with approval signatures, which realized \$30,000 hammer in the Shreve sale of the Brody collection. We do not know of another complete set, although a partial set of ten is recorded.(Photo Ex) 10,225.00



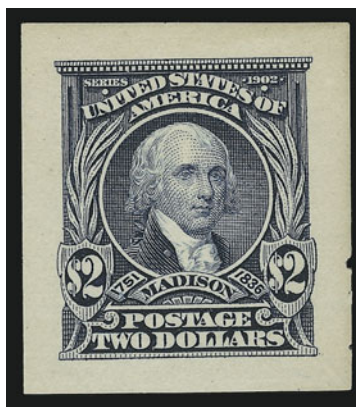
3024

3024 P **1c-\$5.00 1902-03 Issue, Small Die Proofs (300P2-313P2).** Complete set of 14 values mounted on original full gray card from Roosevelt presentation album, rich colors, minor toned spots affect 4c, 50c and \$2.00, otherwise Very Fine, Scott Retail for normal cut-down proofs 2,275.00



3025

3025 P **\$1.00 Black, Panama-Pacific Small Die Proof (311P2a).** 24 x 27mm, intense shade on unusually bright paper for a Panama-Pacific proof, faint translucent spot in lower right margin mentioned only for total accuracy
EXTREMELY FINE. ONLY THREE TO FIVE SETS OF 1915 PANAMA-PACIFIC SMALL DIE PROOFS ARE BELIEVED TO HAVE BEEN MADE.
This is possibly the finest example of the \$1.00 1902 Issue Panama-Pacific small die proof in existence. 1,750.00

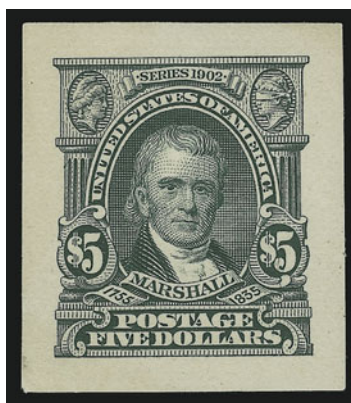


3026

3026 P **\$2.00 Dark Blue, Panama-Pacific Small Die Proof (312P2a).** 24 x 27mm, very faint overall toning as usual for a Panama-Pacific proof, tiny nick in right margin

VERY FINE. AN EXTREMELY RARE \$2.00 1902 ISSUE PROOF MADE FOR DISPLAY AT THE 1915 PANAMA-PACIFIC EXPOSITION. ONLY THREE TO FIVE OF EACH VALUE ARE BELIEVED TO HAVE BEEN PRODUCED.

The \$2.00 in the set of 1902-03 Issue Panama-Pacific proofs sold for \$26,000 hammer (vs. \$16,800 Scott value) in the Brody sale held by Shreves was notably more toned than the example offered here..... 1,750.00



3027

3027 P **\$5.00 Dark Green, Panama-Pacific Small Die Proof (313P2a).** 24 x 27mm, rich color on yellowish wove paper but free of usual toning

EXTREMELY FINE. THE FINEST KNOWN EXAMPLE OF THE RARE 1915 PANAMA-PACIFIC SMALL DIE PROOF OF THE \$5.00 1902 ISSUE. ONLY THREE TO FIVE SETS ARE BELIEVED TO HAVE BEEN PREPARED.

This extraordinary \$5.00 1902 proof is superior to the proof contained in the ex-Brody set. It has only the faintest hint of toning and appears much brighter than the usual Panama-Pacific proof. 1,750.00



3028

3028 P **2c Carmine, Type II, Small Die Proof (319iP2).** Full margins, bright and fresh, Extremely Fine, a rare 2c Shield die proof..... 1,000.00



3029

3029 TC **10c Special Delivery, Rose Red Trial Color Large Die Proof on Card (E6TC1).** Die sunk directly on 107 x 93mm card (without India paper), intense shade, bright and fresh card EXTREMELY FINE. ONLY TWO EXAMPLES OF THE ROSE RED TRIAL COLOR PROOF OF THE 1902 10-CENT SPECIAL DELIVERY ISSUE ARE REPORTED TO EXIST. A SPECTACULAR PROOF AND OF INTEREST TO BOTH THE 1902 AND SPECIAL DELIVERY COLLECTOR.

The 1902 Special Delivery design changed from a messenger running on foot to a bicycle messenger. The engraved image is based on a photograph of the designer, R. Ostrander Smith, riding a bicycle (see *The Speedy*, Henry M. Gobie, p. 119). The stamp was issued in 1902 and re-issued in 1909 from new plates. It is likely that this die proof was prepared in 1902. 2,000.00

ISSUED STAMPS

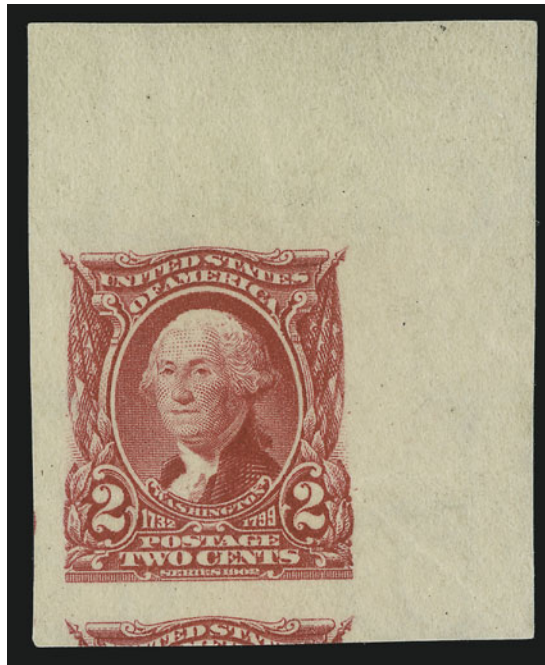


3030EX



3031

- 3030 S **1c-\$5.00 1902-03 Issue, "Specimen" Ty. E Overprint (300-313S-E).** Complete set, original gum, several have minor h.r., 2c corner crease, 6c s.e., 1c-50c Fine-Very Fine, \$1.00 Fine, \$2.00 and \$5.00 Extremely Fine, a small number of sets were handstamped "Specimen" and distributed by postal officials, they are rarely found in the choice condition of this set..... 1,890.00
- 3031 田 **2c Carmine (301).** Block of four tied by "Woodward, O.T." and "Feb. 28, 1903" straight-lines on piece, Fine-Very Fine E. 100-150



3032

- 3032 (★) **2c Carmine, Imperforate (301 var).** Unused (no gum), enormous margins incl. **huge top right sheet corner margins** and part of adjoining stamp below, rich color, creases not readily apparent on face
 EXTREMELY FINE APPEARANCE. ONLY THREE EXAMPLES OF THE 2-CENT 1902 IMPERFORATE ERROR ARE RECORDED. THIS IS THE ONLY CORNER SHEET-MARGIN POSITION.
 All of the three known examples of this error — the only major error found on any of the values of the 1902-03 Issue — are unused without gum and similarly creased. The Brody copy realized \$5,500 in the Shreve sale of his collection.
 With 1954 P.F. certificate..... E. 5,000-7,500



3033

3033 ★田 **4c Brown (303)**. Complete pane of 100 from lower right corner of sheet with full plate selvage at right and normal narrow selvage at bottom, original gum with **61 Mint N.H. stamps**, one stamp in side plate block hinged, stamps in bottom plate block Mint N.H. but tiny hinge-sliver reinforcements in selvage, small faults in two s.e. stamps at top left and thins in two others at left center (not the best centered portion), extraordinarily rich color, some perf separations and tiny reinforcements, minute tear in extreme edge of margin of side plate block

VERY FINE TO EXTREMELY FINE. A RARE COMPLETE PANE OF THE 4-CENT 1902 ISSUE, CONTAINING AT LEAST 37 MINT NEVER-HINGED STAMPS IN EXTREMELY FINE GRADE.

Very few complete panes of the 4c 1902 have survived, and they probably remain intact because of typically poor centering. This pane of 100 is remarkable for its centering and condition. It contains no less than 37 stamps conservatively graded Extremely Fine in Mint N.H. condition. In addition, there are 24 Mint N.H. stamps (without straight edges) about half of which grade Very Fine. Both plate blocks have Extremely Fine centering, and the bottom plate is, for all practical purposes, Mint N.H. (with tiny hinge reinforcements along the outer edge of selvage).

Scott Retail carefully calculated with both plate blocks as hinged and others with Mint N.H. premium where applicable..... 10,590.00



- 3034 ★田 **6c Claret (305)**. Block of four, bottom stamps Mint N.H. and Extremely Fine, top stamps lightly hinged and Fine, Scott Retail as singles..... 445.00
- 3035 ★田 **8c Violet Black (306)**. Top imprint and plate no. block of six, h.r., intense shade and very fresh, few perf reinforcements, Very Fine 750.00
- 3036 ★★田 **10c Pale Red Brown (307)**. Mint N.H. block of four, rich color, unusually precise centering, Very Fine-Extremely Fine 560.00

- 3037 ★田 **10c Pale Red Brown (307)**. Bottom imprint and plate no. block of six, three Mint N.H., others lightly hinged, rich color, fresh and Very Fine for this 1902 value, which is one of the most difficult to obtain in well-centered plate block form..... 1,100.00



3037



3038



3039

- 3038 ★田 **13c Purple Black (308)**. Block of four, lightly hinged, paper and gum are distinctly ribbed, choice centering, intense shade and impression, Very Fine-Extremely Fine 210.00
- 3039 ★田 **13c Purple Black (308)**. Bottom imprint and plate no. block of six, lightly hinged, magnificent deep shade and bright paper, perfectly centered, minor perf separations at bottom and one perf break at center, Extremely Fine, one of the best-centered 1902 13c plate blocks we have encountered 700.00



3040

- 3040 ★田 **15c Olive Green (309)**. Left imprint and plate no. block of six, lightly hinged, beautiful rich color, minor perf separations, still Fine and unusually fresh 3,250.00

- 3041 ★田 **15c Olive Green (309)**. Top imprint and plate no. block of six, one hinged, others Mint N.H., deep shade, small thin in top center stamp, Fine appearance 3,250.00



3041



3042

- 3042 **15c Olive Green (309)**. Strips of three, four, a pair and single used with 10c 1902 on piece, tied by purple "Transito Colon 24 Nov. 1903" circular datestamp and target, 10c tear, one 15c corner off, otherwise Fine, unusual ship-mail usage cancelled on arrival at Colon E. 200-300

- 3043 ★ **50c Orange (310)**. Block of four with horizontal guide line, lightly hinged, remarkably vibrant color on bright white paper, precise centering
EXTREMELY FINE BLOCK OF THE 50-CENT 1902 ISSUE. BLOCKS OF THIS QUALITY ARE RARELY ENCOUNTERED.
With 1978 P.F. certificate 2,000.00



3043



3044

3044 ★田 **\$1.00 Black (311)**. Block of four, **bottom stamps Mint N.H.**, top stamps lightly hinged, deep shade, beautifully centered with wide margins

AN EXTREMELY FINE BLOCK OF THE \$1.00 1902 ISSUE CONTAINING TWO MINT NEVER-HINGED GEMS.

This block is without question one of the finest extant..... 5,300.00



3045

3045 ★田 **\$2.00 Dark Blue (312)**. Block of four, top pair lightly hinged, no trace of a hinge on bottom pair, some horizontal perf separations have been delicately rejoined, perfectly centered, intense shade and proof-like impression on bright paper

EXTREMELY FINE GEM BLOCK OF THE \$2.00 1902 ISSUE. IT IS DIFFICULT TO IMAGINE ANY FINER MULTIPLE OF THIS SCARCE DOLLAR VALUE.

This block of the \$2.00 1902 Issue was hinged on the upper pair only. The horizontal center row of perfs have been expertly reinforced in places, which causes us to value the block as hinged. However, the Scott value of \$5,250.00 for a block only carries a small premium over the \$4,800.00 value of four singles. A block of this superb quality should realize well in excess of Scott Retail..... 5,250.00



3046

- 3046 **\$2.00 Dark Blue (312)**. Horizontal pair, cancelled by datestamps, deep shade and Very Fine, an unusually choice used pair, Scott Retail as two singles 400.00



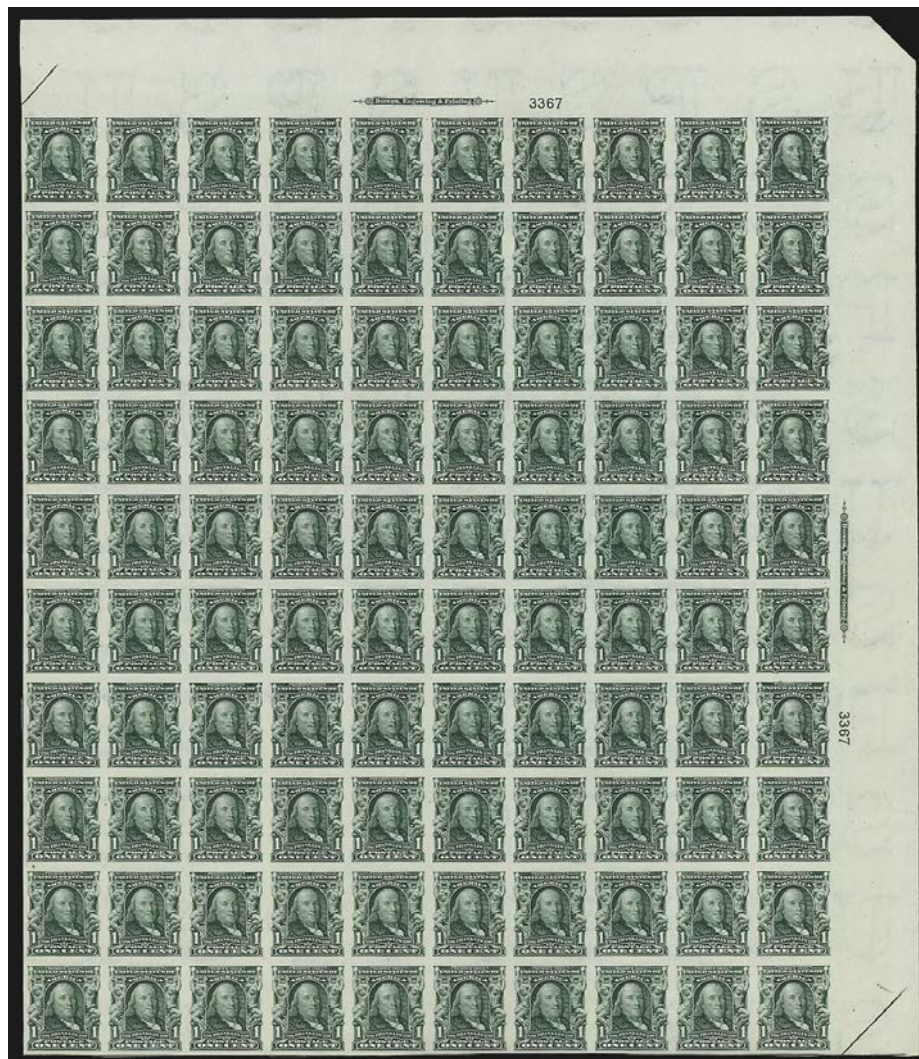
3047

- 3047 ★田 **\$5.00 Dark Green (313)**. Block of four with horizontal guideline, h.r., intense dark shade and proof-like impression, bright and fresh, nibbed perf at top right
FINE-VERY FINE. A RARE AND IMPRESSIVE ORIGINAL-GUM BLOCK OF THE \$5.00 1902 ISSUE.
The Scott value for a block carries a small premium over the \$11,600 total for four singles..... 13,500.00



3048

- 3048 **\$2.00 Dark Blue, \$5.00 Dark Green (312, 313).** Tied by New York double-oval cancels on piece, \$5.00 perfectly centered with wide margins, an Extremely Fine Gem, \$2.00 well-centered and Very Fine, very scarce in these premium grades, Scott Retail for used singles 950.00



3049

- 3049 ★★田 **1c Blue Green, Imperforate (314).** Mint N.H. complete pane of 100 from top right of sheet, imprint and plate nos. at top and right, rich color, fresh, couple tiny wrinkles and tears in edge of selvage, still Extremely Fine 3,775.00



3050

3050

4c Brown, Imperforate, Schermack Ty. III Private Perforation (314A). Large margins and perfectly centered, full Schermack perforations on both sides, deep rich color, very lightly cancelled by datestamp, tiny insignificant corner crease and minute thin specks at left

EXTREMELY FINE GEM APPEARANCE. ONE OF THE THREE OR FOUR BEST-CENTERED USED EXAMPLES OF THE 4-CENT 1908 IMPERFORATE.

With the rising popularity of vending and affixing machines, the Bureau of Engraving and Printing received numerous requests from manufacturers for supplies of imperforate stamps, which could then be privately perforated to conform to each firm's machine. In May 1908, a supply of 25 sheets (400 stamps per sheet) of the 4c 1902 Issue, without perforations, was delivered to the Schermack Mailing Machine Co. in Detroit. The entire supply was cut into coils with Schermack Type III perforations, designed for the firm's patented affixing machine and delivered to the Winfield Printing Co. for use on mass mailings of advertising material. Approximately 6,000 were used on a mailing for Hamilton Carhartt Manufacturer, and almost all of the 4,000 balance were used on a mailing for Burroughs Adding Machine Co.

Our unpublished census contains 44 used examples, including three strips of three (one on cover), three singles on separate covers, and 32 single used copies (four are or were at one time on piece, including one of the sound copies with full margins). All three strips of three and two covers were used by Karl Koslowski, who was the only person able to acquire some of the 4c Imperforates. He is also the source for the only known unused copies. Our published census (updated) contains four pairs, two guide line pairs and nine singles, for a total of 21 unused stamps.

This stamp is without question one of the finest used examples extant, despite the tiny flaws in the left margin, which are of little significance and not even mentioned on the accompanying certificate. The centering in relation to the Schermack perfs and overall margins, combined with the light cancellation, are attributes rarely seen among examples of the 4c 1908 Imperforate.

With 1967 P.F. certificate 40,000.00



3051

- 3051 ★★田 5c Blue, Imperforate (315). Mint N.H. block of ten with vertical guide line, large margins, dark shade and proof-like impression, both the paper and gum are bright and fresh

EXTREMELY FINE. A SUPERB MULTIPLE OF THE 5-CENT 1908 IMPERFORATE.

Scott Retail as Mint N.H. blocks and pair without premium for guide line 4,375.00

- 3052 ★田 5c Blue, Imperforate (315). Bottom imprint and plate no. block of six, lightly hinged on top center stamp and bottom selvage, others Mint N.H., large margins, remarkably deep rich color

EXTREMELY FINE. A SUPERB 5-CENT 1908 IMPERFORATE PLATE BLOCK.

This block is bright and fresh, unlike so many of the 5c 1908 multiples that have brownish toned gum and yellowish paper...
..... 2,600.00



3052



3053

- 3053 ★ **1c Blue Green, Coil (318).** Horizontal pair, almost perfectly centered, rich color
 VERY FINE AND CHOICE. PAIRS OF THE 1908 ONE-CENT HORIZONTAL COIL ARE
 EXTREMELY RARE IN THIS GRADE OF CENTERING AND CONDITION.
 Signed E. Stern in pencil. With 1976 P.F. certificate 14,000.00



3054

- 3054 ★田 **2c Carmine Rose, Ty. II (319j).** Top imprint and plate no. block of six, one stamp lightly
 hinged, others Mint N.H., vibrant color and fresh, Fine-Very Fine, a very scarce full top
 plate number block of the 2c Type II 1,000.00



3055

- 3055 ★ **2c Carmine, Ty. I, Vertical Pair, San Francisco Roulette (319e var).** Vertical strip of three with huge sheet selvage at left containing **plate letters**, pair at top with roulette, lightly hinged on top stamp only, pencil note indicates sheet was from plate 3292

VERY FINE FOR THIS MAJOR BUREAU ISSUE PERFORATION VARIETY. THIS MULTIPLE WITH PLATE LETTERS IN THE SELVAGE IS BELIEVED TO BE UNIQUE.

There are three distinct imperforate errors in the 1908 2c Shield Issue, listed in Scott as Nos. 319d, 319e and a sub-variety of 319e, the San Francisco Roulette.

The imperforate-horizontally multiples (Scott 319d) come from a block of 25 purchased from the Washington D.C. post office. All known examples of Scott 319d are printed in a deeper shade of Carmine than 319e or the San Francisco Roulette. The two multiples in the Brody collection (Shreve lots 105 and 106) show that the original Scott 319d multiple came from the upper half of the lower right pane of 100.

The imperforate-between multiples (Scott 319e and San Francisco Roulette) come from two sources, according to research by Roger Brody. All multiples listed as Scott 319e (without roulette) have very faint blind perf holes between the stamps; the shade and centering of all Scott 319e's are identical, but as a group they differ from the rouletted examples. The ex-Brody bottom imprint and plate no. 4475 block of four (lot 108) proves that the *bottom* two rows were imperforate between.

The third error — imperforate-between with roulette — should be separately listed in Scott, but it is identified as a sub-variety of 319e, which confuses the two unrelated sources. The rouletted multiples come from a small number of sheets received by the San Francisco postmaster that were missing a line of perforations between the first and second rows at top, unlike No. 319e without roulette, which comes from the bottom two rows. Rather than destroy or return the problem sheets, the postmaster applied his own roulette for separation. The top imprint block in the Zoellner sale confirms the position of the error stamps in the sheet. The strip offered here has wide selvage showing the string of plate letters entered on the plate by the siderographer. The pencil notation identifies Plate 3292 as the source, possibly based on the plate letters, because we have been unable to locate a plate number on any of the multiples appearing in auctions over the past 60 years. To the best of our knowledge, the strip offered here is a unique position multiple.

Ex Col. Green..... 3,000.00



3056

- 3056 ★田 **2c Carmine, Ty. I, Imperforate (320)**. Complete pane of 100 from top right of sheet, imprint and plate no. blocks at top and right, stamp in bottom left corner lightly hinged, other Mint N.H. incl. both plate blocks, vivid color, fresh and Extremely Fine..... 3,928.00



3057

- 3057 ★★田 **2c Carmine, Ty. I, Imperforate (320)**. Mint N.H. top imprint and plate no. block of six, large margins, intense color, Extremely Fine..... 325.00

PRIVATE VENDING AND AFFIXING MACHINE PERFORATIONS



3058



3059



3060

- 3058 ★ **1c Blue Green, Brinkerhoff Ty. II Perfs (314 II).** Pair, lightly hinged, Extremely Fine, with 1974 P.F. certificate 90.00
- 3059 ★ **2c Carmine, Brinkerhoff Ty. II Perfs (320 II).** Pair, lightly hinged, vibrant color, Extremely Fine, with 1974 P.F. certificate 190.00
- 3060 ★ **2c Scarlet, Mailometer Ty. IV Perfs (320b IV).** Pair, lightly hinged, horizontal crease caused by gum, otherwise Fine, with 1974 P.F. certificate 120.00



3061

- 3061 ★ **1c Blue Green, Shermack Ty. I Perfs, 6 Holes (314 I).** Guide line pair, lightly hinged, rich color, superb centering
EXTREMELY FINE. A RARE GUIDE LINE PAIR OF THE ONE-CENT WITH SHERMACK TYPE I 6-HOLE PERFS.
With 1974 P.F. certificate 1,600.00



- 3062 ★ **2c Carmine, Sherman Ty. I Perfs, 7 Holes (320 I).** Pair, lightly hinged, vibrant color, Very Fine and scarce, with 1974 P.F. certificate 1,000.00
- 3063 ★田 **2c Carmine, Sherman Ty. I Perfs, 8 Holes (320 I).** Block of four with horizontal guide line, lightly hinged, brilliant color and superb centering, Extremely Fine, Scott Retail as two normal pairs 220.00
- 3064 ★田 **2c Lake, Sherman Ty. I Perfs, 8 Holes (320a I).** Block of four with horizontal guide line, lightly hinged, intense shade and very fresh, Fine-Very Fine, Ward backstamp, with 1980 P.F. certificate, Scott Retail as two normal pairs..... 600.00
- 3065 ★田 **2c Lake, Sherman Ty. I Perfs, 8 Holes (320a I).** Bottom imprint and plate no. block of six, deep shade, remarkably choice centering for such a multiple, Very Fine and scarce, with 1976 P.F. certificate..... E. 500-750
- 3066 ★ **1c Blue Green, Sherman Ty. III Perfs (314 III).** Strip of three and guide line strip of four, former lightly hinged and Very Fine, latter shifted up to show horizontal guide line in bottom margin (consequently grades Very Good).....(Photo Ex) 33.00
- 3067 匣 **1c Blue Green, 2c Carmine, Lake, Sherman Ty. III Perfs (314, 320, 320a).** 1c on two wrappers and one 1c entire (stamp scuffed), 2c tied on separate covers with Farwell and Mekeel corner cards, Fine-Very Fine group.....Not illustrated 535.00



3068



3069

- 3068 ★ **5c Blue, U.S. Automatic Vending Ty. I Perfs (315 I).** Pair, h.r., remarkably choice centering, fresh and Extremely Fine, with 1974 P.F. certificate 650.00
- 3069 ★ **5c Blue, U.S. Automatic Vending Ty. II Perfs (315 II).** Pair, lightly hinged, intense shade and proof-like impression, perfectly centered, Extremely Fine Gem pair of this scarce vending-machine coil 1,400.00

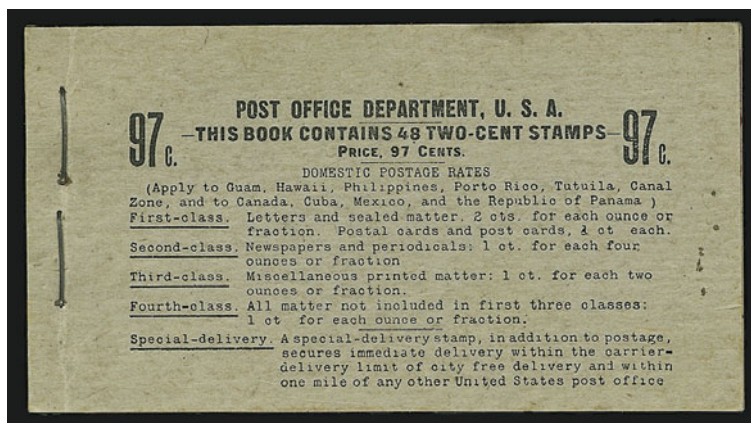
BOOKLET PANES



- 3070 ★ **1c Blue Green, Booklet Pane of Six (300b).** Very lightly hinged, deep shade and fresh, Extremely Fine pane 600.00
- 3071 ★ **1c Blue Green, Booklet Pane of Six (300b).** Position D with **plate no.**, small h.r., Fine and scarce 1,300.00
- 3072 ★ **2c Carmine, Booklet Pane of Six (301c).** Position A, lightly hinged, bright color, slight crease at bottom appears to be caused by gum, otherwise Fine-Very Fine..... 500.00



- 3073 ★ **2c Carmine, Booklet Pane of Six (301c).** Position F, lightly hinged, intense shade, Fine-Very Fine 500.00
- 3074 ★★ **2c Carmine, Ty. I, Booklet Pane of Six (319g).** Position C, Mint N.H., deep rich color, choice centering except trimmed slightly into design at bottom, Fine-Very Fine. 550.00
- 3075 ★ **2c 1908 Booklet Panes of Six (319g, 319p, 319q).** Six panes, Positions A, B, C, E and F are Carmine and Scarlet Ty. I, Position G is Lake Ty. II, one of former and the latter Mint N.H., a couple have reinforced perf separations, Fine and desirable group (Photo Ex) 1,350.00
- 3076 ★★ **2c Carmine, Ty. II, Booklet Pane of Six (319h).** Position D with **plate no.**, Mint N.H., fresh and Fine, very scarce 1,350.00



3077

- 3077 ★★ **2c Carmine, Ty. I, 97c Unexploded Booklet, Black on Gray Cover (BK17).** Contains eight Mint N.H. panes, centering varies, Fine-Very Fine and an unusually well-preserved booklet 2,750.00



3078EX



3080EX



3079EX



3081EX



3082EX

- 3078 ★ **10c Ultramarine, Special Delivery (E6).** Eight plate no. singles incl. four with “09” re-issue numbers, h.r., all are at least Very Fine, the 1902 10c Special Delivery was re-issued from new plates in 1909, and the special “09” numbers were added to appease collectors who wanted a way to distinguish the re-issues from the originals....(Photo Ex) 1,200.00

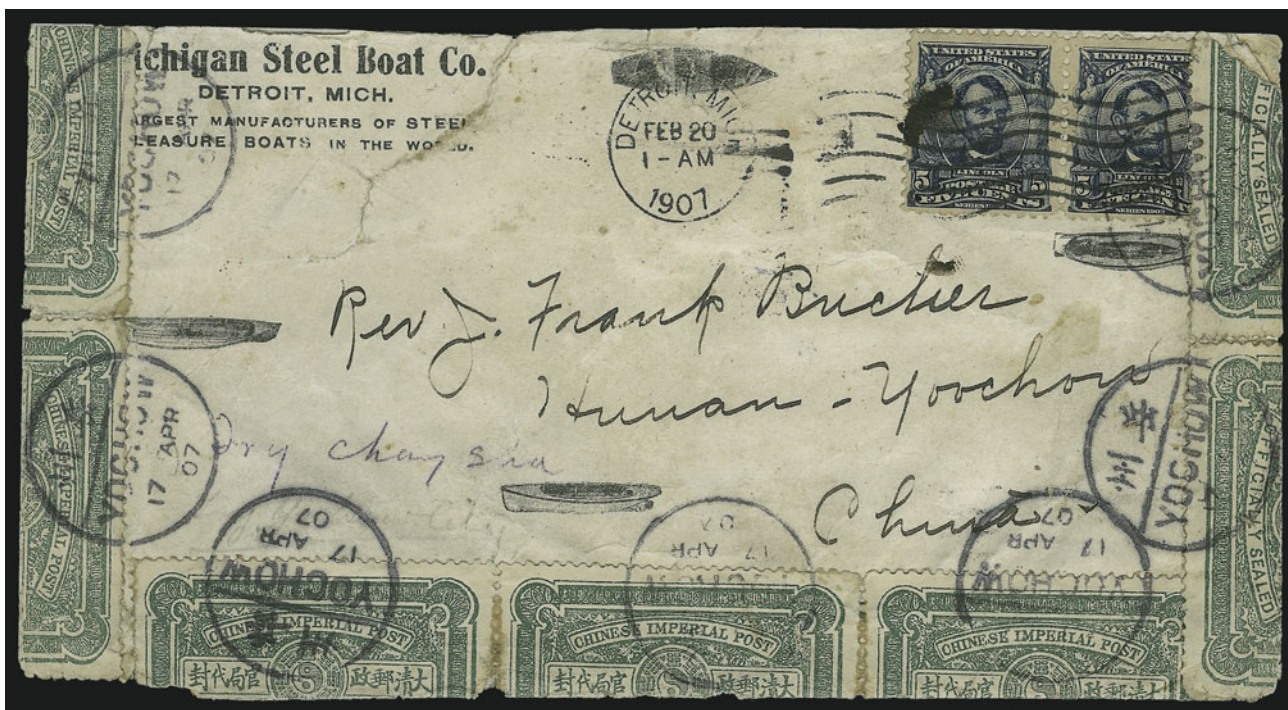
STAMP GROUP LOTS

- 3079 ★田 **1c-10c 1902-03 Issue (300/307).** Blocks of four incl. 1c (Mint N.H.), 3c, 5c (two), 10c (slight crease in one) and No. 319f, most stamps lightly hinged, a few with h.r., almost all Very Fine(Photo Ex) 1,148.00
- 3080 ★ **1c-8c 1902-03 Issue (300, 301, 303, 306).** Two imprint and plate no. strips of three of Nos. 300, 301 and 303, one of No. 306, both 2c strips and the stamps in 4c strip are Mint N.H., others lightly hinged or small h.r., Fine-Very Fine(Photo Ex) 995.00
- 3081 ★田 **1c-4c 1902-08 Issue (300, 301, 303, 314).** Imprint and plate no. blocks of six, 4c h.r. and exceptionally choice centering, others lightly hinged, Very Fine.....(Photo Ex) 1,470.00
- 3082 ★ **2c, 8c 1902-08 Issue Balance.** Incl. 8c h.r. and Fine, Nos. 319, 319b, 319f, 319k and 320a pair, most lightly hinged, Very Fine-Extremely Fine.....(Photo Ex) 232.00

1902-08 ISSUES ON COVER

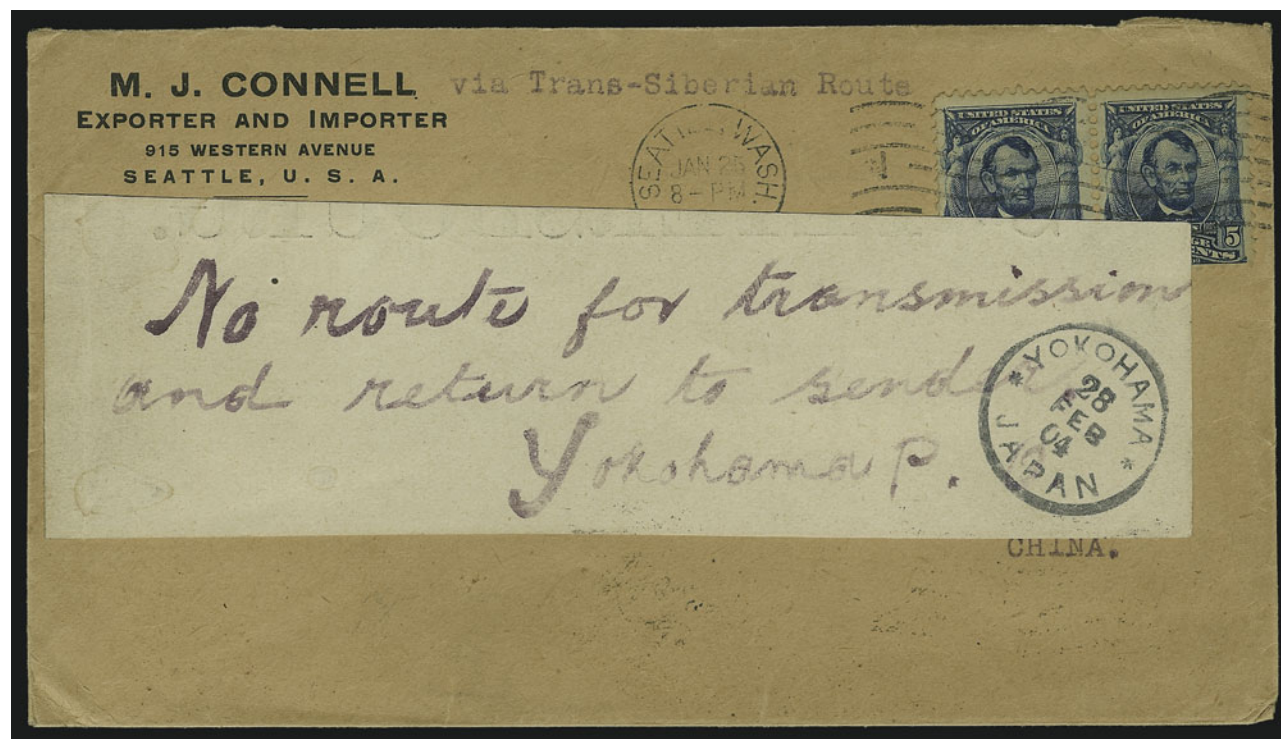


- 3083 ☒ **1c Blue Green (300)**. S.e., used with **1908 Christmas Seal (WX3)**, both tied by Peoria Ill. Dec. 21, 1908 machine cancel on Christmas postcard, Very Fine..... E. 75-100
- 3084 ☒ **2c Carmine (301)**. Bottom imprint and plate no. strip of three used with 10c Orange Brown, Ty. II (283), tied by "Manchester Wis. Oct. 17, 1903" duplexes on registered cover **to La Canée, Crete**, New York label and transit backstamps, stamps toned and one 2c has tear, still Fine and attractive E. 100-150
- 3085 ☒ **1c Blue Green, 3c Bright Violet (300, 302)**. Two 1c and three 3c tied by Boston ovals on 2c registered entire **to Beirut, Syria**, purple Boston Aug. 10, 1903 registry datestamp, "Old Home Week" label and London transit on back, few toned perfs, Very Fine E. 100-150
- 3086 ☒ **2c Carmine, 3c Purple (301, 302)**. 3c strip of three, used on 2c registered entire **to Greece, marked "not known" and returned to Dead Letter Office**, purple Davenport Ia. Jun. 29, 1903 registry datestamp, 2c tied by target, 3c tied by New York oval transits on back, label on front, numerous transits on both sides, opened up for display, Very Fine and unusual E. 100-150
- 3087 ☒ **5c Blue (304)**. Perfs in, tied by Canandaigua N.Y. Jul. 29, 1907 machine cancel on cover **to American Consulate in Jerusalem**, blue consul handstamp for forwarding to Andover Mass., note on back "I found out that this can go in this letter without an extra stamp", slightly toned, Fine E. 75-100



3088

- 3088 ☒ **5c Blue (304).** Pair tied by Detroit Mich. Feb. 20, 1907 machine cancel on manufacturer's corner card cover to **Yochow, China**, forwarded to Yochow City in an effort to locate addressee, **opened and resealed with seven Chinese Imperial Post Official Seals in Green**, all tied by Yochow circular datestamps, slightly reduced at top and faults expected of such a usage, Fine and remarkable..... E. 500-750



3089

- 3089 ☒ **5c Blue (304).** Pair tied by Seattle Wash. Jan. 25, 1904 machine cancel on export-import co.'s corner card cover to **Port Arthur, China**, during **Russo-Japanese War**, and **returned due to suspension of mail service**, label affixed with handwritten note "No route for transmission and return to sender. Yokohama P.O.", "Yokohama Japan Feb. 28, 04" circular datestamp on label, transit backstamps, Very Fine, extremely rare, the Japanese attacked Port Arthur just as this cover was in the mails..... E. 400-500



- 3090 ☒ **13c Purple Black (308).** Tied by New York oval on registered cover to **Yokohama, Japan**, vaudeville agent's corner card, New York Jun. 20, 1904 registry datestamp, San Francisco label, transit backstamps, Very Fine E. 100-150
- 3091 ☒ **13c Purple Black (308).** Pair, small tear at right, tied by St. Louis oval cancels on **Royal Italian Commission, Universal Exposition, St. Louis** registered corner card cover to **Florence, Italy**, purple St. Louis Night Sta. Oct. 23, 1904 registry datestamp, New York label, receiving backstamps, Very Fine..... E. 100-150
- 3092 ☒ **1c-15c 1902-03 Issue (300/319).** Eight different stamps incl. 4c & 6c 1898 (280, 282) and 1c, 5c, 8c, 10c, 15c 1902's and 2c Shield, tied by several strikes of **"Pago Pago Samoa Nov. 29 2PM 1904"** duplex datestamp and grid on **W. Blacklock** registered corner card cover to **Johannesburg, South Africa**, "Pago Pago, Tutuila, Samoa, registered, Nov. 29, 1904" datestamp, New York registry label partially removed, transit backstamp, two stamps have s.e., Very Fine, a colorful and very scarce cover E. 500-750
- 3093 ☒ **15c Olive Green (309).** Horizontal strip of four, used with 10c Louisiana Purchase (327), tied by New York Dec. 2, 1904 duplexes on legal-size blue cover with printed address to **Berlin, Germany**, fold at center, opened at ends, stamps have faults, still a Fine appearing cover and impressive high-value franking..... E. 200-300



3094

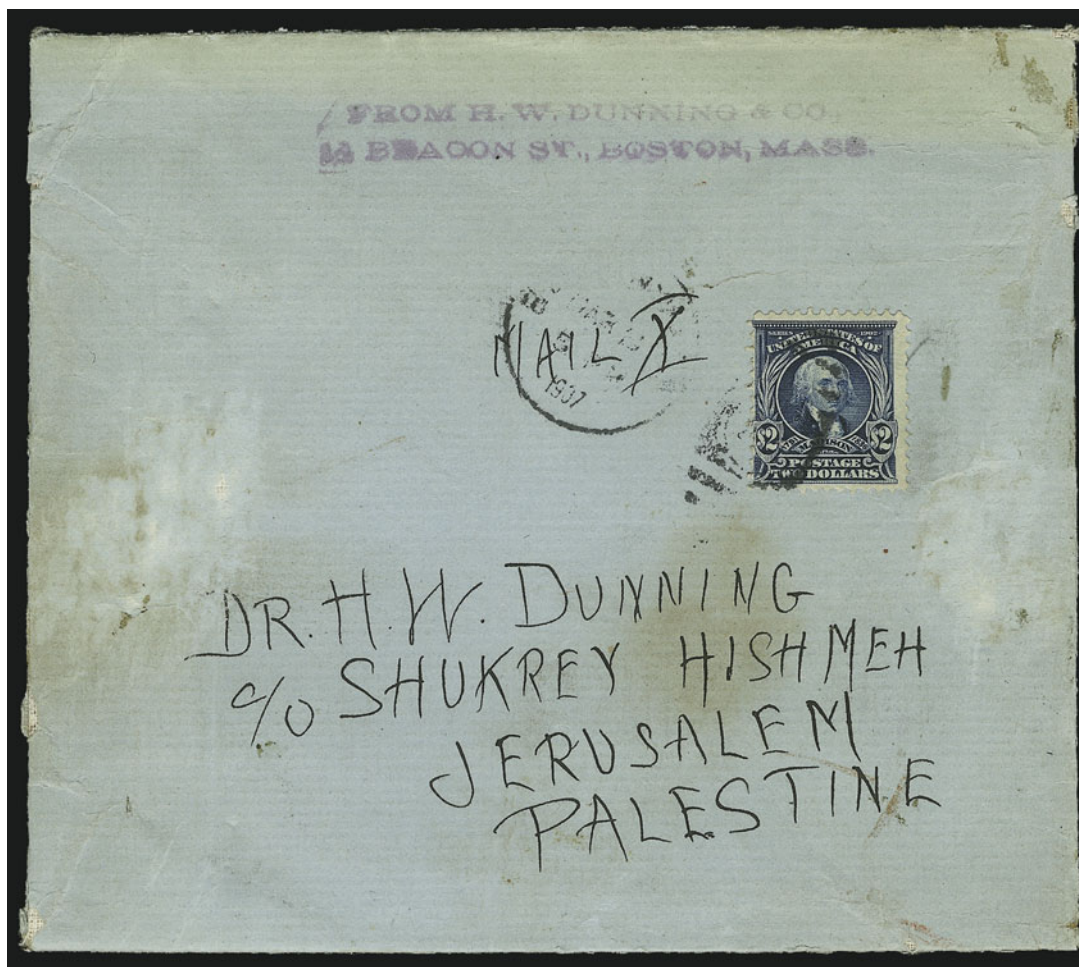
3096



3095



- 3094 **50c Orange (310).** Well-centered but scuffed at top left, tied by Philadelphia registry oval, purple Phila. Sep. 18, 1908 registry datestamp on front only to **Frankfurt, Germany**, from famous numismatist Henry Chapman, New York label, Very Fine appearance, Scott Retail for a full cover is \$700.00 E. 150-200
- 3095 **1.00 Black (311).** Used with **eleven different 1902-03 Issues** incl. 50c on legal-size registered 2c entire to **Lucerne, Switzerland**, stamps tied by light strikes of New York registry oval with Sep. 23, 1904 oval datestamp on entire, receiving backstamp, 10c s.e., two low values have small faults, otherwise Very Fine, a spectacular franking, Scott Retail for \$1.00 on cover is \$1,500.00 E. 1,500-2,000
- 3096 **1.00 Black (311).** Used with 6c and 8c 1902, tied by bold strikes of New York registry oval on dark buff cardboard package front only from American Ex. National Bank to another bank in Milwaukee Wis., New York registry office utility label with magenta datestamp (Sep. 14, 1905?) and control number, marked for first-class mail, Fine, scarce use of dollar-value 1902 to pay \$1.06 postage (3.3 pounds) and 8c registry fee for a bank transfer of currency, Scott Retail for full cover is \$1,500.00 E. 300-400



3097

3097 ☒ **\$2.00 Dark Blue (312).** Centered to left, tied by lightly struck Boston Mass. Mar. 3, 1907 duplex datestamp and oval grid on greenish-blue linen-lined folded package wrapper to **Jerusalem, Palestine**, H. W. Dunning & Co.'s purple return-address handstamp at top, two faint waterstains at sides and minor wear along folds, adhesive residue on back only

A FINE AND TRULY OUTSTANDING SINGLE-FRANKING USAGE OF THE \$2.00 1902 ISSUE, PAYING THE 40-TIMES U.P.U. RATE TO PALESTINE.

A similar but somewhat lesser-quality cover to the same addressee (forwarded to Beirut) realized \$4,250 hammer in the Brody sale held by Shreves. To the best of our knowledge, these two covers are the only examples of the \$2.00 on mail to Palestine.

Scott Retail on cover \$2,500.00..... E. 3,000-4,000



3098

3098 ☒ **\$2.00 Dark Blue, \$5.00 Green (312, 313).** Both have choice centering and rich colors, \$5.00 wide natural s.e., tied by bold New York registry ovals on manila cover **to Lucerne, Switzerland**, New York Oct. 3, 1904 oval registry datestamp and label, receiving backstamp, slightly reduced at top, each stamp with corner perf fault

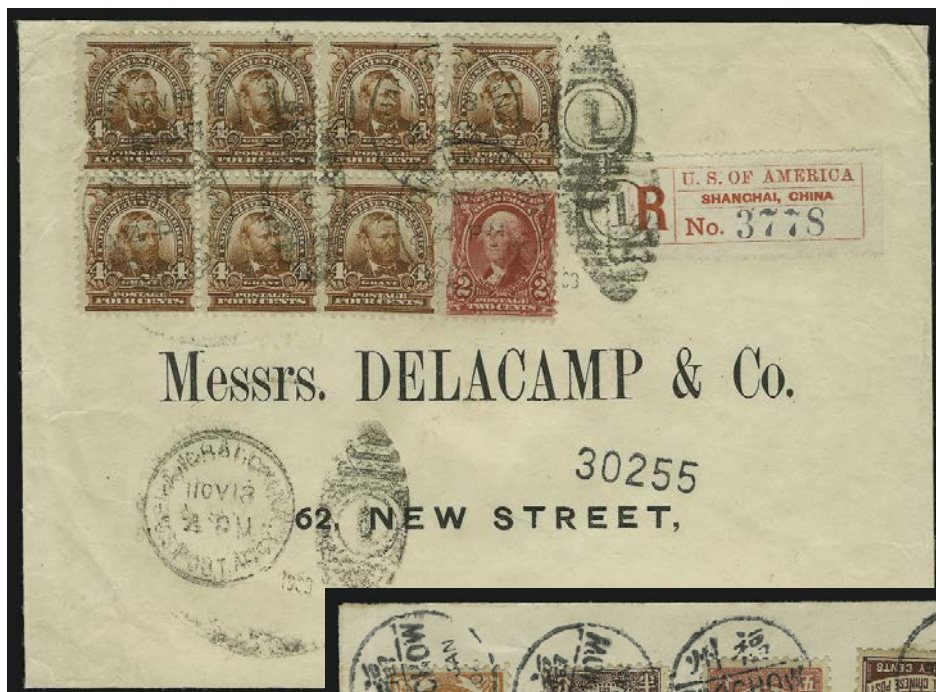
VERY FINE APPEARANCE. A SPECTACULAR REGISTERED COVER WITH THE TWO HIGHEST DENOMINATIONS OF THE 1902 ISSUE USED TOGETHER. VERY FEW \$2.00 OR \$5.00 1902 ISSUE COVERS ARE KNOWN.

From the same correspondence as lot 3095. Scott Retail \$2,500.00 for \$2.00 on cover and \$5,000.00 for \$5.00 on cover. E. 7,500-10,000



- 3099 ☒ **1c Blue Green, Imperforate (314).** Block of twelve tied by Newton Center Mass. Jul. 6, 1907 duplexes on blue special delivery cover to Boston, the block and cover are Extremely Fine, Scott Retail for used blocks and pairs off cover is \$212.00..... E. 150-200
- 3100 ☒ **2c Carmine, Ty. I (319).** Block of ten with **dramatic horizontal mis-perforation across design**, oval grid cancels, purple Coleraine Minn. Sep. 16, 1913 registry backstamp on cover to **Victoria, British Columbia**, evidently damaged in transit with U.S. official seal on back and Victoria B.C. "Received in damaged condition" handstamp, creased thru block causing tears at bottom, otherwise Fine E. 200-300
- 3101 ☒ **2c Carmine, Ty. I (319).** From booklet pane with straight edges at sides, tied by "**Tin City Alaska Jul. 21, 1907**" duplex on 2c entire to **Helsinki, Finland**, Nome and Helsinki backstamps, Very Fine, Tin City was a short-lived post office on the western edge of the Seward Peninsula (50 miles from the Russian border)..... E. 200-300
- 3102 ☒ **10c Ultramarine, Special Delivery (E6).** S.e. at left, used with **Canada 2c Edward VII** on Windsor Hotel illustrated advertising cover to Everett Mass., backstamped with two different Alburg & Boston R.P.O. datestamps (one with agent's name), purple fee-claim handstamp, 2c corner fault, otherwise Very Fine, scarce mixed franking with 10c Special Delivery used from Canada to pay fee in the U.S..... E. 200-300
- 3103 ☒ **1c-10c 1902-03 Issues on Domestic Covers.** 59 covers or cards, all of exhibition quality and carefully chosen for unusual markings or usage, includes leather postcards and souvenir cards, advertising, registered mail, special delivery, Alaska and Hawaii towns, booklet pane pairs and strips, Honolulu "Packet Boat" straightline (scarce), "Held for Postage", postage due, Detroit R.F.D. Steamboat, "Fraudulent", condition generally Very Fine, a treasure trove of \$20-50 retail covers.....
.....Not illustrated E. 1,000-1,500
- 3104 ☒ **1902-03 Issues on Advertising Covers.** 22, almost all are better illustrated designs, many in color or multicolor, wide range of subjects incl. tobacco, hotel, St. Louis World's Fair, equipment, collar ad, agricultural, flag, and food products, condition generally Very Fine, average retail value is \$50-75..
.....Not illustrated E. 1,000-1,500
- 3105 ☒ **1c-15c 1902-03 Issue Foreign Usages.** 61 covers or cards, chosen for frankings and destinations, incl. wide range of European and Scandinavian countries, as well as Australia, Egypt, Haiti, Japan and Korea, many registered covers incl. one to Tasmania with Seattle registry label, forwarded and postage due usages, a small number of postcards incl. one forwarded with French stamp, generally Very Fine and of exhibition quality, average retail value \$50-75.....
.....Not illustrated E. 2,500-3,500

OFFICES IN CHINA



3107



3106

- 3106 ☒ **3c-10c 1902 Issue (302, 304, 307).** Used with six **China 1897 ½c-20c Imperial Post (98, 100, 102, 104)** issues, former tied by targets, latter by "Foochow 4 Jan. 06" circular datestamp on registered cover to **Moudon, Switzerland**, purple "**Registered/Jan. 10, 1906/U.S. Postal Agency, [Shanghai, China]**" four-line datestamp with bottom line off cover, handstamped Foochow registry box and number, backstamped Shanghai (Jan. 10), New York (Feb. 7) and Moudon (Nov. 18), faint toning around a few perfs

VERY FINE. A SPECTACULAR MIXED FRANKING FROM FOOCHOW WITH CHINESE IMPERIAL POST ISSUES AND THE UNITED STATES 1902 ISSUE CANCELLED AT THE POST OFFICE IN SHANGHAI.

The Chinese stamps pay the 30c rate for internal postage and registration. The U.S. stamps pay the double 5c rate and 8c registry fee. E. 1,500-2,000

- 3107 ☒ **2c Carmine, 4c Brown (301, 303).** 2c used with 4c block of four plus three, tied by "Shanghai, China, U.S. Post. Agcy. Nov. 18 4PM 1903" duplex datestamp and oval on registered cover with printed address to New York, U.S. Postal Agency in Shanghai registry label tied, blue "U.S. Postal Agency — Reg. Div. * Shanghai, China * Nov. 18, 1903" oval backstamp, San Francisco and New York transits on back, small piece torn from one 4c at left (not readily apparent), otherwise Very Fine cover E. 400-500

- 3108 ☒ **1c-2c 1902-03 Issues Used from Shanghai.** Two postcards (No. 300) and two covers (Nos. 301, 319) to the U.S., each with stamp tied by U.S. Postal Agency Shanghai datestamp, Fine-Very Fine*Not illustrated* E. 200-300

CANAL ZONE



3109EX

- 3109 ★田 **CANAL ZONE, 1904, 1c-10c Overprints (4-8).** Complete set in horizontal blocks of ten (8c and 10c are actually non-contiguous blocks of four and six hinged together), tropicalized gum, 10c Extremely Fine, others Fine-Very Fine, Scott Retail as blocks and singles(Photo Ex) 5,845.00

PHILIPPINES

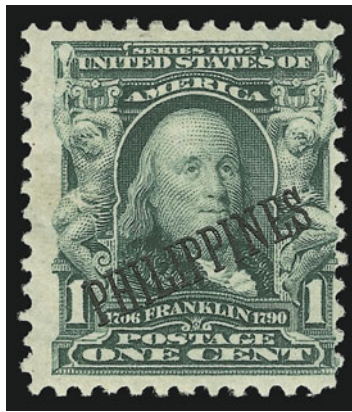


3110



3111

- 3110 ★★田 **1903, 8c Violet Black (232).** Mint N.H. block of four, intense shade, fresh and Very Fine..... 225.00
- 3111 ★田 **1903, 13c Purple Black (234).** Block of four, bottom pair Mint N.H., top pair lightly hinged, beautifully centered, deep shade, fresh and Very Fine-Extremely Fine 150.00
- 3112 ★ **1903, 1c-\$5.00 Overprints (226-240, 240a).** Complete representation of the issue, incl. 1c block, 10c pair and duplicate \$2.00, 50c with plate no., some have disturbed gum or other minor fault, Fine-Very Fine appearance.....*Not illustrated* 4,700.00
- 3113 ★ **1903, 1c-\$1.00 Overprints (226/240).** 45, incl. pairs and minor overprint varieties (broken letters), incl. \$1.00, mixed centering and minor faults in some, generally Fine appearance, Scott Retail \$1,300.00+ without premium for varieties*Not illustrated* E. 400-500



3114

- 3114 ★ **1903, 1c Blue Green, St. Louis Exposition Special Printing (226SP).** "Special Surcharge" backstamp, centered to right, fresh and Fine, an extremely rare Special Printing made for display at the St. Louis World's Fair, with 1978 P.F. certificate, listed in Scott footnote 900.00

- 3115 ★田 **1903, 1c Blue Green, Bureau of Insular Affairs Special Printing (226SP).** Block of four, choice centering, rich color, some perf separations rejoined with hinges, Very Fine, with 1979 P.F. certificate, Scott Retail as singles 3,100.00



3116

- 3116 ★田 **1903, 3c Bright Violet, Bureau of Insular Affairs Special Printing (228SP).** Block of four, fresh and bright, Fine, with 1980 P.F. certificate, Scott Retail as singles 3,100.00



3115

- 3117 ★田 **1903, 4c Brown, Bureau of Insular Affairs Special Printing (229SP).** Block of four, very lightly hinged, rich color, each stamp superbly centered with wide margins, Extremely Fine Gem, not only an extremely rare block but certainly the finest examples of this rarity extant, with 1980 P.F. certificate, Scott Retail as singles 3,100.00



3117

- 3118 ★田 **1903, 5c Blue, Bureau of Insular Affairs Special Printing (230SP).** Block of four, very lightly hinged on top pair only, bottom pair **Mint N.H.**, intense shade, choice centering, certificate notes a trivial "vertical crease" in bottom right stamp, which is really just a natural gum crease, still Extremely Fine, a rare block containing two Mint N.H. examples of the B.I.A. Special Printing, with 1980 P.F. certificate, Scott Retail as singles..... 3,100.00



3118



3119

- 3119 ★田 **1903, 15c Olive Green, Bureau of Insular Affairs Special Printing (235SP).** Block of four, very lightly hinged, well-centered, rich color on bright fresh paper, Very Fine and rare block, with 1980 P.F. certificate, Scott Retail as singles... 3,100.00

- 3120 **1903, 50c Orange, Bureau of Insular Affairs Special Printing (236SP).** Block of four, lightly hinged, vibrant color, each stamp superbly centering, Extremely Fine, an extremely rare block containing four of the finest known examples of this B.I.A. Special Printing, with 1978 P.F. certificate, Scott Retail as singles 3,100.00



3120

- 3120A **Lots 3115 thru 3120 offered as one lot, if the bidding exceeds the total realization of the previous six lots.**



3121

- 3121 ☒ **1903, 6c Brownish Lake (231).** Vertical pair tied by "Manila P.I. Dec. 10 1PM 1906" duplex on registered cover to Baltimore, magenta Manila registry division datestamp, receiving backstamps, Fine pair on a fresh and attractive cover..... E. 150-200



3122

- 3122 ☒ **13c Purple Black (308).** Tied by "Ponce P.R." box cancel, purple "Ponce, P.R. Registered Dec. 27, 1904" double-circle datestamp on cover to **Russia**, New York label, transit backstamps, Very Fine E. 150-200
- 3123 ☒ **1902-03 Issue Used in Possessions.** Two cards and four covers, one from Canal Zone (overprints), two from Puerto Rico and three from Samoa, incl. block of eight 1c from Arecibo, minor faults, generally Fine-Very Fine appearance, scarce usages.....*Not illustrated* E. 400-500

END OF SALE — THANK YOU

PRICES REALIZED FOR SALE 873---3/12/2004

The Cheshire Collection of 1902-08 Issues

Robert A. Siegel Auction Galleries, Inc.
60 East 56th Street, 4th Floor, New York, NY 10022
Tel (212) 753-6421 Fax (212) 753-6429

Lot#	Realized	Lot#	Realized	Lot#	Realized
3001	3,750	3043	2,250	3088	1,900
3002	3,250	3044	6,250	3089	2,200
3003	R	3045	5,250	3090	325
3003	R	3046	1,000	3091	500
3004	3,625	3047	5,250	3092	950
3005	210	3048	950	3093	230
3006	325	3049	3,500	3094	260
3007	210	3050	42,500	3095	2,200
3008	290	3051	4,250	3096	375
3009	2,900	3052	2,000	3097	2,300
3010	3,250	3053	8,500	3098	16,000
3011	1,800	3054	525	3099	350
3012	500	3055	3,750	3100	450
3013	800	3056	2,600	3101	450
3014	1,000	3057	200	3102	280
3015	475	3059	350	3103	1,400
3016	2,000	3060	135	3104	800
3017	4,750	3061	2,400	3105	R
3018	3,500	3062	1,150	3105	R
3019	3,750	3063	650	3106	2,700
3020	3,250	3064	1,200	3107	1,200
3021	4,250	3065	2,000	3108	160
3022	7,500	3066	55	3109	1,900
3023	26,000	3067	250	3110	525
3024	3,500	3068	600	3111	260
3025	2,900	3069	1,500	3112	1,350
3026	2,100	3070	1,050	3113	750
3027	3,000	3071	475	3114	1,500
3028	750	3072	270	3120	16,000
3029	3,750	3073	220	3121	850
3030	2,800	3074	210	3122	375
3031	220	3075	625		
3032	4,750	3076	675		
3033	8,500	3077	2,100		
3034	425	3078	800		
3035	550	3079	450		
3036	625	3080	375		
3037	800	3082	90		
3038	200	3083	110		
3039	850	3084	500		
3040	1,900	3085	230		
3041	1,050	3086	350		
3042	115	3087	85		