

536th SALE

R
O
B
E
R
T

A.

S
I
E
G
E
L

UNITED STATES POSTAL HISTORY

INCLUDING AN IMPORTANT GROUP OF TERRITORIAL COVERS

19th CENTURY STAMPS

THE PROPERTY OF VARIOUS OWNERS
SOLD AT THEIR ORDER

AT UNRESERVED PUBLIC AUCTION



WEDNESDAY, OCTOBER 18th, 1978
at 10:30 A.M. & 1:30 P.M.

AUCTION GALLERIES, Inc.

120 E. 56th Street, New York, N.Y. 10022

CONDITIONS OF SALE

1. The terms of sale are strictly cash on delivery to the highest bidder unless special arrangements have been made prior to the sale.
2. All bids are per lot as numbered in the catalogue unless otherwise announced by the auctioneer at the time of sale. The right is reserved to group two or more lots; to withdraw any lot or lots from the sale, or to act in behalf of the seller. The auctioneer shall regulate the bidding and in the event of any dispute his decision shall be final.
3. Any lot, the description of which is incorrect is returnable, but only within five days of receipt. All disputed lots must be returned intact as received. **The following lots may not be returned for any reason whatsoever: Lots containing ten or more stamps; Lots from buyers who have had the opportunity to examine them before the sale; Lots described as having defects or faults may not be returned because of any faults. No illustrated lots may be returned because of centering, margins or other factors shown in the illustrations.**
4. Successful bidders, unless they are known to us or supply acceptable references are expected to make payment in full before the lots are delivered. Mail bidders will be notified of the amount of their purchases. All mail bidders who have established credit with us must make payment within three days after receipt. We reserve the right in our sole and absolute discretion to demand cash payment at the time a lot is knocked down to any bidder who has not previously established credit with us or whose account is in arrears. In the event any buyer refuses to pay cash for any lot at the time it is knocked down to him, the auctioneer reserves the right to re-offer the lot immediately for sale to the highest bidder.
5. If the purchase price has not been paid within the time limit, nor lots taken up within seven days from date of sale they must be resold and any loss arising from such sale will be charged to the defaulter. Any account more than thirty days in arrears is subject to a late payment charge of 1½% per month so long as the account remains in arrears. If the auctioneer, in his discretion, should institute any legal action to secure payment of a delinquent account the defaulting purchaser shall pay all legal expense incurred by the auctioneer and such charges will be added to the amount owed.
6. All lots are sold as genuine but should any lot be proved otherwise by written opinion of any competent, responsible authority acceptable to us, immediate refund of the full purchase price will be made, provided that such claim is made in writing within 14 days from date of sale. If claim is not made within this period, no lots are returnable for any reason at any time. So long as we are notified within the 14 day period that an opinion is being sought the matter will remain open until such opinion is rendered. We will not be responsible for any charges incurred by the buyer for expertization fees and costs unless the opinion states the item is not genuine, in which case we will pay actual costs up to a maximum of \$50.00.
7. Until paid for in full, all lots remain the property of Robert A. Siegel Auction Galleries, Inc. in behalf of the seller.
8. All forwarding charges will be added to the purchase price. The mode of shipment shall be at our option unless we are given specific instructions.
9. Lots may be sent for inspection to buyers known to us upon written application. All such lots must be returned to us by registered mail, adequately insured and within 24 hours after receipt. The applicant assumes all responsibility and for insurance against all risks from time of receipt until they are actually received back by us, and is to pay all expenses of postage and insurance. **No lots can be sent for inspection within eight days from date of local viewing. Large lots and collections cannot be sent for inspection.**
10. Agents are responsible for all purchases made in behalf of their clients unless other arrangements are made prior to the sale.
11. The placing of a bid shall constitute acceptance of the foregoing conditions of sale.

ROBERT A. SIEGEL
MALCOLM SIEGEL, Licensed Auctioneers

FOR TABLE OF DESCRIPTIONS SEE INSIDE BACK COVER

FIRST SESSION

OCTOBER 18, 1978 — 10:30 A.M.

UNITED STATES POSTAL HISTORY

FREE FRANKS & AUTOGRAPHS

- | | | |
|----|---|--------|
| 1 | ✉ H.B. Anthony, C. (Charles) Sumner , Autograph Free Franks, Anthony (Sen. from R.I., known as "Father of the Senate") on fresh 1864 cover with "Congress Washington D.C." pmk., 1½ page holograph signed letter, Sumner (Sen. from Mass., Fiery Abolitionist) on cover with "Washington D.C. Free." pmk., VF lot | E.VI |
| 2 | Winston S. Churchill , Autograph Signature on small card, matted with photo, in Lucite Frame, 12x16", VF, Handsome & Scarce | E.VII |
| 3 | Grover Cleveland Aug 20, 1905, Autograph Signature as ex-President, on small card, matted with color picture in 10x16" Gold & Blue Frame, VF, Handsome & Scarce | E.VI |
| 4 | J. Fenimore Cooper , Autograph Signature on 1841 Partly Printed \$10.00 check to his wife, usual Red "Paid at the Otsego City Bank", matted with portrait, 10x16", VF | E.VI |
| 5 | B. Disraeli , Autograph Signature on 1840 two-page holograph letter, matted to show both sides, with color portrait, 14x11", VF, Handsome & Very Scarce | E.VI |
| 6 | Dwight D. Eisenhower , Autograph Signature as President on Oct. 25, 1955 typewritten letter from Denver, Col., "The White House/Washington" letterhead, "Thank you (for) writing me . . . of your own complete recovery from an illness similar to mine." (One month after Ike's heart attack), matted with original envelope, 20x12½", VF & Interesting | E.VII |
| 7 | ✉ Lucretia R. Garfield Free , Autograph Free Frank as Presidential Widow, "Pasadena, Cal. Feb. 25, 1904" pmk. on small mourning envelope, holograph signed note enclosed on matching Monogram stationery, slight cover soiling, o/w VF | E.VI |
| 8 | Thos Heyward Jun (Signer of Declaration of Independence from S.C.) , Autograph Signature on 5½x4½" piece of Partly Printed State of S.C. document with seal, irregular at L. barely affecting signature, o/w VF | E.IV |
| 9 | ✉ A. Lincoln , Autograph Signature as President, on holograph docketing "Respectfully submitted to the Sec. of War Jan. 5, 1863.", at L. of envelope addressed to him (not carried through the mail), VF & Rare | E.XIII |
| 10 | Geo. B. McClellan , Autograph Signature on card, matted with picture of him & Lincoln (who ousted him from service & against whom he ran for the Presidency in 1864), 9¼x15", VF | E.IV |

LOTS ON VIEW

Monday, October 16th, Tuesday, October 17th,
and Day of Sale until one-half hour before sale time.

11	Free Horace Mann M.C., (Educator), Autograph Free Frank, Red "West-Newton Mass. Jun 28" pmk., pencil docketing "June 28. 49", matted with portrait, 8¼x16", VF	E.V
12	Saml. F.B. Morse, (Inventor of Telegraph), Autograph Signature on two page Holograph letter, ms "Locust Grove Po'keepsie/Aug. 3d. 1859" heading, VF	E.VI
13	Theodore Roosevelt, Autograph Signature as President on 1907 two-page typed letter, "The White House/Washington" letterhead, Fascinating Contents, e.g. "... he is not only deliberately threatening us but deliberately trying to blackmail us.", couple minor stains in body of letter, Signature VF	E.VI
14	Geo: Ross (Signer of Declaration of Independence from Pa.), Autograph Signature & three-line holograph affidavit as Attorney on 1755 Legal Document, some aging to be expected, signature VF	E.V
15	William H. Seward, (Lincoln's Cabinet), Autograph Free Frank as N.Y. Gov., Green "Auburn N.Y." pmk. & matching "Free" on cover to Ohio, minor cover faults at T., mend affects "W" of frank, o/w Fine	E.V
16	Thaddeus Stevens, Autograph Free Frank as Congressman, "Congress Washington D.C." partial pmk. on cover, Stevens was Vigorous Opponent of Slavery, Proposed Impeachment of Pres. Johnson & managed the Trial, cover toned spots, Very Scarce Free Frank	E.VIII
17	Wm H Taft, Autograph Signature as President on 1912 typed note on White House Letterhead, to which he added "I am deeply grateful.", VF ..	E.V
18	Wm H. Taft, Autograph Signature as ex-President on 1915 typed note on his Letterhead, VF	E.V
19	Free Z. Taylor Majr 7th Infy, Autograph Free Frank, also "Public Service", ms. "Louisville Ky/27 Decem" pmk. on 1814 folded cover to Washington, D.C., ms. docketing indicates Vincennes, Indiana Terr. as point of origin, partly broken filing crease affects signature, slightly aged, o/w VF, Rare (Photo)	E.XIII
20	Mark Twain, Autograph Signature on small card, matted with large Photo, in 18x22" Frame, with original 1902 envelope containing the signature, addressed by Twain, VF & Handsome	E.VIII
21	G. Washington, Autograph Signature on 1799 holograph order for oil, white lead & nails, some splits along folds, quite age stained, affecting Signature, Scarce & Desirable (Photo)	E.XIII
22	Danl Webster U.S. Senate, Autograph Free Frank on cover front, VF	E.III
23	Danl Webster, Autograph Free Frank on cover, no postal markings, matted with portrait in 10¾x16½" Frame, VF	E.IV
24	Astronauts' Autographs, Over 50 Autograph Signatures of the Original Seven, mostly on covers, but incl. Autographed 8x10" Color Photo of each & Jan. 3, 1961 cover with All Seven Autographs, Total of Nine Virgil I. "Gus" Grissom signatures, also incl. several other Cacheted Space Flight Covers, VF & Desirable Lot	E.X

STAMPLESS COVERS

25	Annaps. Md. Sep 18, Clear Transit pmk., matching "(S)hip" & ms. "14½" on 1827 folded letter to Phila., Red "Cardiff" backstamp, ms. "21" rate, VF & Scarce	E.V
26	Baltimore Md. Sep 9, Red pmk., ms. "30" War Rate on 1815 folded letter to Hagerstown, Fine & Scarce	E.V
27	Boston, Mass. Nov. 30, Red pmk., matching Large Bold "40" on 1849 folded letter to San Francisco, VF	E.V

28	⊠	B Rouge/May 15 , Large Boxed pmk., matching "Free" on 1822 folded letter to Army Q.M.G., Washington, somewhat aged, Rare Postmark(Photo)	E.VII
29	⊠	Baton Rouge/Louisiana/May 19 , Bold Dashed Box pmk. matching "Free", ms. "On Service" on 1823 folded letter to Wash., D.C., VF, Choice Example of this Rare Postmark(Photo)	E.XI
30	⊠	"Cheshire," "Derby," "Warehouse Point" (Conn.) , Three Fancy Oval pmks., Greenish Black, Red & Brownish Red respectively, first two ms. rate, latter no rate mark, Fine Lot	E.VI
31	⊠	Chillicothe O, Chillicothe Ohio. , former ms. pmk., matching "July 27th 1805" & "Paid 10" on folded cover, latter Oval pmk., ms. "15" on Dec. 29, 1815 folded cover, ms. docketing affects pmk., Fine Lot	E.III
32	⊠	Circular & Drop Rate Stampless , 1846-54, Four Covers, Black New-York 1Ct., Red "New-York Paid 1Ct.", Red "New-York 2cts." & "Paid," Blue "Paid" in Rectangle & "2" in Circle (Phila. printed hardware circular), F-VF	E.IV
33	⊠	Donaldson. V.L. , Wonderfully Bold pmk., ms. "Octr 25" date & "10" rate on 1829 folded letter to New Orleans, contents Bilingual Summons, VF & Choice(Photo)	E.V
34	⊠	Easton, Pa 1 Sept , Clear Red Fancy Circle, ms. "51" War Rate on 1815 folded letter to Painted Post, N.Y., minor wear & soiling, o/w Fine, Very Scarce	E.V
35	⊠	Harmony College (S.C.) , ms. pmk., matching "Paid 3cts." on cover, some soiling, light rust stains, o/w Fine, Scarce, Unlisted	E.III
36	⊠	Harmony College S.C. , Mostly Bold pmk., ms. "3" on small cover, negligible wear & age specks, VF Strike, Unlisted(Photo)	E.VI
37	⊠	Honey Grove Tex/31 Aug '49 , ms. pmk., "10" rate on folded letter to Tenn., minor age staining, o/w Fine	E.III
38	⊠	Kaskaskia (Ill.) Feb 27 , ms. pmk., ms. "50" on 1821 folded letter to Lima, N.Y., slight soiling, o/w Fine	E.III
39	⊠	Liberty. Mo. Sep 26 , Bold Fancy Oval pmk., ms. "25" on folded cover to Mass., neat ms. docketing, slight cover wear, VF Strike, Very Scarce(Photo)	E.VIII
40	⊠	Little-Rock Arks. , Mostly Bold pmk., ms. "25" Rate on 1838 folded letter to Mass., splits along folds, tiny piece out at T., o/w Fine	E.III
41	⊠	Lyme Ct. Feb 22 , Bold Red Rimless Circle on 1831 Folded Letter, ms. "12½" rate, VF, choice	E.III
41A	⊠	Madison/Ia. Mar. 11 , Wonderfully Bold Boxed U/L case pmk., ms. "1834" on 1834 folded cover to Pa., VF Indiana Stampless(Illustr. at B.L. Photo Plate 3) (Photo)	E.IX
42	⊠	Maysville Ark. , Brownish pmk., bit heavily inked, matching "5" in circle, ms. "March 18" date on 1854 folded letter, also 1853 folded letter from Same Corresp., ms. "Maysville Ark/Jan 21" & "5" rate, F-VF, Rare, Unlisted Town	E.VII
43	⊠	Nashville Dec. 1. , Clear Str. Line U/L case pmk., small "Free" in caps on 1812 folded letter to Wash., D.C., slightly brittle, Fine & Scarce Postmark(Photo)	E.VIII
44	⊠	Natchitoches L Oct 5 , Brown Partial Double Circle pmk., matching "Free", ms. "Lieut. Outlaw" & "On Service" on folded letter to Washington, D.C., headed "Cantonment Jesup/September 29th 1824", Fine, Early Use from Cantonment Jessup (Established 1822)	E.VI
45	⊠	New Haven (Conn.) , 1820-48, Nine Stampless Covers, incl. Red "New-Haven Ct." Rimless, 30mm Circles in Blue, Red & Green, Two Forwarded Covers, Very Scarce 1848 Blue "R" (Recorded or Registered), mostly VF, Attractive Lot	E.VII
46	⊠	New London Conn. , Red pmks. on Two 1847 folded letters to N.C., each with matching shaded hollow "X", one with "Paid", VF	E.III

47	⊠	Newport Rhode Island Sep 17 , Huge Oval pmk. (53x44mm), matching Large "Paid", ms. "12½" on 1822 folded letter to Ct., Fine	E.V
48	⊠	"New York June 29th 1762," Date Line on Folded Letter to London, ms. Rate Mark, Sept. 9 Bishop Mark on Back, VF Colonial Cover	E.VI
49	⊠	N-York Dec: 9 , Str. Line Confederation Period pmk., ms. "4" on 1785 folded letter to N.H., somewhat worn, o/w Fine, Scarce	E.VIII (Photo)
50	⊠	Pataskala O , Bold Balloon-type pmk., ms. "POB Free" on Western Union Telegraph cover to Ind., Partly Printed "Return Registered Letter Bill" enclosed, VF & Unusual	E.V (Photo)
51	⊠	Pensacola Flor. Dec 27 , Clear pmk., Bold matching "Free", ms. "On Public Service" on 1847 folded cover to Wash., D.C., Statehood Usage, VF	E.III
52	⊠	PHI 18 NY , Magenta pmk., matching "Ship" in Arc & ms. "22" on 1805 folded cover to N.H., ms. "pr. Ship Hannah/Capt. Yardsley", Fine	E.IV
53	⊠	PHI 18 FE , Mostly Clear Brownish Red pmk., ms. "30" War Rate on 1816 folded letter, Fine & Scarce	E.V
54	⊠	Pilatka Flor. Mar 25 , Clear Forwarding pmk. on 1852 folded letter, "Cheraw S.C." pmk. to Pilatka & Forwarded to Charleston, S.C., "Paid" & "3" struck over "5", trivial stain at B.L., o/w Fine & Very Scarce	E.IV
55	⊠	Pt Isabel Augt 2 , ms. pmk., matching "10" on 1846 folded letter to Horse Head, Ga., Fine Mexican War Soldier's Letter	E.VI
56	⊠	P'T. Isabel/Jan. 16. 1847 , Str. Line pmk., matching "10" on folded letter to Tenn., headed "Camp near Victoria Mexico", Fine Mexican War Cover	E.VI
57	⊠	Pumpkintown S.C./July the 28 , ms. pmk., "10" rate on 1850 folded letter to Tenn., couple minor cover stains, o/w Fine, Scarce & Unusual ..	E.IV
58	⊠	Sac & Fox/Agency Io/Oct 18th , ms. pmk., ms. "5" on 1847 folded letter, minor soiling, o/w Fine	E.VI
59	⊠	St. Fra:L Apr 6 (St. Francisville, La.), Very Bold pmk., ms. "Free" on 1821 folded letter to Wash., D.C., Fine	E.III
60	⊠	Ship , Three folded covers, each with Diff. Baltimore, Md. pmk., one Blue (1844 from Brazil , ms. "20¾" rate), others Red, 21¾ & 27 rates, F-VF	E.IV
60A	⊠	Trans-Atlantic Stampless Covers , Six, Five to Europe, one from Germany to Canada, four from same correspondence, Variety of Markings, two soiled & worn, others F-VF	E.V
61	⊠	Vincennes. *I*Dec30 , Clear Red pmk., ms. "12½" on 1835 Partly Printed folded Bank Statement, VF	E.III
62	⊠	Wallingford Ct. , Part Rimless Red Circle, ms. date, matching "Free" on Fresh 1825 Folded Letter, VF	E.III
63	⊠	"West. Meriden. Ct" , Mostly Bold Str. Line caps, matching "5" on June 1846 Folded letter, couple tiny ink spots, Fine	E.VIII (Photo)
64	⊠	"Windham", Vt. , Red Brown Rimless Arc ("M" partly struck), matching "Free" on Jan. 1813 Folded Letter to "Epaphroditus Champion/Member of Congress Washington," Memorandum at end of letter to a Col. Wadsworth from Congressman Champion mentions Windham County, thereby verifying Vermont as State of Origin, some internal splits along folds, yet Quite Fine considering age, Unlisted & Possibly Unique (stampless cover catalog only lists Windham in manuscript, 1830 earliest year known)	E.VIII (Photo)
65	⊠	Massachusetts Stampless Covers , 1820's-50's, 37 Mostly Diff. (Nine Boston), Variety of Towns & Rates, VG-VF Lot	E.VI
66	⊠	Michigan Stampless Covers , 1840's-50's, 24, Almost All Diff. Towns (No Detroit), Nicely Written-up, VG-VF	E.VI
67	⊠	New York State Stampless Covers , 1809-50's, Collection of 49 Mostly Diff. (11 N.Y.C.), Range of Towns & Rates, VG-VF Lot	E.VIII
68	⊠	Pennsylvania Stampless Covers , 1800-50's, Collection of 44, incl. 28 Philadelphia betw. 1800-54, some Better, Generally Fine Lot	E.VII

69	☒	Southern Stampless Covers , 1820's-50's, 42, Half Md., others Ga., La. & Va., Variety of Towns & Rates, some Better, Generally Fine Lot	E.VII
70	☒	Wisconsin Stampless Covers , Eleven, incl. Two Milwaukee Territorials, Blue "Sheyboygan Falls", Kenosha, Madison, Berlin & Cambria, ms. Fulton, Linden (two), Unlisted Red Rimless "Walworth Wis.", mixed quality, G-VF Lot	E.VI
71	☒	Stampless Covers , 1791-1822, Eight folded letters or covers, incl. N.Y. Str. Line & "Clamshell", etc., also incl. "Independence Mo" pmk. & "5" on front only, VG-F lot	E.IV
72	☒	Stampless Covers , 1830's-50's, 41, Variety of Towns & States, VG-VF Lot	E.VII
73	☒	Stampless Covers , 1840's-50's, 13 from Southern States, Seven with ms. pmks., incl. Two South Saluda, S.C. (Unlisted), Bosticks Mills & Randallville, N.C., Pinkneyville, Geo. (Unlisted), New Market, Tenn (two), also incl. Green "Princeton N.J." & Boxed "10", VG-F Lot, Scarce & Desirable	E.VI

TERRITORIAL COVERS

ALABAMA, ARIZONA

74	☒	Huntsville AT April 15. , Partly Clear pmk. ms. "25" & "P. Service/C. Nicholas B.P.M." on 1819 Territorial folded letter to Washington, minor aging, Very Rare Marking	E.VIII
75	☒	Gillett A.T. Jun 1 1880 ", Magenta Arizona Territorial pmk., matching Cork cancel on 3c Green Entire (U167) to S.F., VF	E.V

ARKANSAS

76	☒	Columbia A.T./May 24th , ms. Arkansas Territorial pmk., ms. "12½" rate on 1835 folded letter to Lake Providence, La., minor aging, o/w Fine, Rare, Unlisted as Territorial Postmark in Stampless Cover Cat. (Photo)	E.XI
77	☒	Fayetteville A.T./Feb: 28th , Bold ms. Ark. Terr. pmk., ms. "25" on 1836 folded letter to Pa., VF & Rare, Stampless Cover Cat. listing made from this cover	E.X
78	☒	Harrisburgh Ark: T./July 7th 1830 , ms. pmk., ms. "25" rate on folded letter to Ohio, ms. docketing, extensive interior reinforcement & repaired splits along folds, some translucencies from reinforcement, Rare, Stampless Cover Cat. listing made from This Cover	E.IX
79	☒	Jackson A.T./Feb 9th , ms. Ark. Terr. pmk., ms. "Free J. S. Fricklin P.M." on 1836 folded letter to Ohio, Fine & Rare, Unlisted in Stampless Cover Cat.	E.IX
80	☒	Little-Rock Arks. Dec 20 , Bold Territorial pmk., matching "Free" on folded 1832 partly-printed Tax Receipt form to Pa., Forwarded with ms. pmk. & "12½", Fine & Scarce	E.VIII
81	☒	Pine Bluff/Augst. 30th , ms. Ark. Territorial pmk., ms. "10" rate on 1835 folded letter to Little Rock, couple lightly toned areas, o/w Fine, Very Rare, Unlisted in Stampless Cover Cat. as Territorial	E.IX

COLORADO, DAKOTA

82	☒	Denver City, C.T. Jun 2 1862 , Mostly Clear pmk. ties 3c Rose (65) on cover, couple soiled perf. tips, Fine Territorial	E.III
83	☒	Denver, D.T. Ju 6 1884 , Bold Octagonal pmk., matching Star in Circle ties 2c Red Brown (210) on Bank Corner Card cover to Minn., VF	E.II
84	☒	Ludden, Dak. Sep 22 1887 , Perfect pmk., matching "Wheel of Fortune" cancels average 1c Gray Blue (206), not tied on Illustr. Ad Cover for Insurance Co., VF	E.II

- 85 ∞ **Washington, Dak. Terr. Oct. 24 1882**, Bold Bluish Gray pmk., matching Cork on 3c Green (184), not tied, small faults, on cover with Corner Card of "Capital House, Madison Wis.", Fine Territorial Cover **E.II**
- 86 ∞ **Dakota Territorial Covers**, "Castlewood D.T. Sep 3 1885" ties No. 210, Magenta "Grand Forks Dakota Mar 13 1880" on 3c Green Entire (U167), "Lisbon Dak." 1886 pmk. with No. 210, "Mitchell Dak. Dec 13 1887" & Target ties No. 213 (small tear), Fine Lot **E.V**

FLORIDA

- 87 ∞ **Apalachicola F. Ty Aug 29**, Red pmk., ms. "18 $\frac{3}{4}$ " with "20 $\frac{3}{4}$ " over it & matching "Ship" on 1837 folded letter from N.O. to "Brown's Ferry. Florida", Fine & Very Scarce **E.V**
- 88 ∞ **Apalachicola F. Ty Jan 5**, Mostly Bold Red Territorial pmk., matching Large "25" on fresh 1844 folded letter to Mass., VF **E.V**
- 89 ∞ **Apalachicola F. Ty. Jan 5**, Light Red pmk., matching Large "25" on 1844 folded letter to N.Y., trifle aged, Fine **E.IV**
- 90 ∞ **Aucilla, Fla/7 Feby**, Blue ms. **Territorial** pmk., matching "25" on 1843 folded letter, minor wear, o/w Fine, Rare, Unlisted in Stampless Cover Cat. **E.VII**
- 91 ∞ **Duncansville (Fla.) June 8th 1842**, ms. **Territorial** pmk., ms. "18 $\frac{3}{4}$ "(+) "6 $\frac{1}{4}$ "(=) "25." on folded letter to Tenn., small stain at L., o/w Fine, Very Rare, **Unlisted** **E.VIII**
- 92 ∞ **"Fort Brooke E. F. (East Florida Terr.) March 26th 1836"**, ms. heading on folded letter to Washington, ms. "Public Service" & "(Via N. Orleans)", Blue "New Orleans La. Apr 8" pmk. & matching "Free", VF & Scarce **E.V**
- 93 ∞ **"Fort Brooks, E.F. (Ft. Brooke, East Fla. Terr.) Novr. 15th. 1844"**, ms. heading on folded letter to Washington, D.C., ms. "On Public Service", Red "Savannah *Geo *Nov 22" pmk., matching "Steam Boat" & "Free", toning band along filing fold, o/w VF, Very Scarce .. **E.V**
- 94 ∞ **Jacksonville Flo. Jun 24**, Light Red pmk. ("24" in ms.), ms. "25" rate on 1836 folded letter to Wash., D.C., headed "Fort Drane"?, Fine & Very Scarce **E.VI**
- 95 ∞ **Jasper Fla./Decr. 18th**, ms. **Territorial**, pmk., ms. "25" on 1842 folded letter, stain at B.R., o/w Fine, Rare **E.V**
- 96 ∞ **Key-West Florida Sep 15**, Brilliant Red Oval pmk., matching "Paid" & ms. "25" on 1835 folded letter to Va., cover trifle worn, still VF, Magnificent Strike of this Scarce Postmark **E.VIII**
- 97 ∞ **Key West Florida, Dec 16**, Light Readable Red Oval, ms. "25" on 1843 **Territorial** folded letter to N.Y., Scarce **E.V**
- 98 ∞ **Key West Florida Feb 22**, Light Oval pmk. ties 3c Red (11), Margins to cut in, on 1853 folded letter to N.Y., toned area on cover, Scarce, Statehood Usage **E.IV**
- 99 ∞ **Mannington Fl/July 19th**, ms. **Territorial** pmk., "25" rate on 1842 folded letter to Tenn., minor cover aging, o/w Fine, Very Scarce **E.V**
- 100 ∞ **Monticello Flor.**, Mostly Clear **Green** pmk., ms. "25" on 1842 folded letter to Tenn., **Territorial** usage, slight aging, o/w Fine, Rare **(Photo)** **E.IX**
- 101 ∞ **Pensa. F. Aug 23**, Bold Red pmk., ms. "On Service./Free" on 1828 folded letter to Wash., D.C., VF & Choice **E.VII**
- 102 ∞ **"St. Augustine East Florida/July 7. 1822"**, ms. heading on folded letter to Wash., D.C., Red "Chalsn. SC Jul 12" pmk. & ms. "f" (Free), VF **E.V**
- 103 ∞ **St. Augustine-E. Flo.-Sept 20**, Bold Oval pmk., matching "Free", ms. "On pub Service" on 1827 folded letter to Wash., D.C. VF **E.VII**
- 104 ∞ **St. Augustine-E. Flo.-July 24**, Light Red Oval, matching "Free", ms. "On Pub? Service" & "Wm Gates/Major USA" on 1828 folded letter to Wash., D.C., headed "Fort Marion", Fine & Scarce **E.VIII**

105	St. Augustine Fl. T. Feb 15, Red pmk., Bold matching "Free", ms. "on Service" on 1840 folded letter to Wash., D.C., Fine	E.VI
106	St. Augustine Fl. T. Feb 13, Bold pmk., matching "Free", ms. "(On Public Service)" on fresh 1844 folded cover to Wash., D.C., VF (Photo)	E.VI
107	Tallahassee Fla Dec 1, Bold Oval pmk., matching Large "Free" on 1830 folded letter to "John H. Eaton/Secretary of War/Washington City", some minor splits along interior folds, VF strike	E.VII
108	Tallahassee Flo. Feb 17 1840, Clear Oval pmk., ms. "25" on fresh folded letter (written on Partly Printed Way Bill) to N.Y., couple trivial toned spots, o/w VF, Choice	E.VII
109	Tallahassee Flo. May 19 1840, Clear Oval pmk., matching "Paid", ms. "25" on folded letter to New Orleans, several hinge-reinforced splits along folds, o/w Fine	E.IV
110	(Tall)ahassee Floa. Dec 15 1840, Lightly struck Oval pmk., ms. "25" on folded letter to Ill., Scarce	E.IV
111	Tallahassee Floa. Sep(?) 1841, Red Oval pmk., matching "Free" & ms. "On public Service" on folded letter to Wash., D.C., headed "Fort Ocilla. Mid. Flo.", VF	E.VI

INDIAN TERRITORY

112	Cantonment Gibson Ar. Apr 7, Bold pmk., ms. "25" on ca. 1842 folded cover to Wash., D.C., VF & Rare	E.XII
113	Doakes Ville Ark. Jun 25, Bold pmk., ms. "10" on 1849 folded letter to N.Y., headed "Pine Ridge" (Choctaw Nation), VF & Rare Indian Territorial	E.X
114	For(t) G(ib)son Ark. Jun 22, Indian Terr. pmk., ms. "on Service" & "10" on 1846 folded letter to Wash., D.C., Fine & Scarce	E.X
115	Ft Gibson/Nov 16 (Indian Territory), ms. pmk., ms. "Paid 10/CWA" on 1848 folded letter to Indiana, aged, Scarce Postmark	E.VIII
116	Fort Gibson Ark. Dec 20, Bold Indian Territory pmk., ms. "Paid 10" on 1849 folded letter to Ind., tiny age spots, VF Strike, Very Scarce	E.X
117	Fort Towson Ark. Aug 29, Mostly Clear Indian Terr. pmk., ms. "18 3/4" rate on 1839 folded letter to La., headed "Fort Smith Arks.", Fine & Rare, 6 1/2 Months Earlier than Listed in Stampless Cover Cat	E.XI
118	Fort Towson Ark. Sep 21, Clear Choctaw Nation pmk., ms. "On Public Service/10" on 1846 folded letter to Wash., D.C., Fine & Very Scarce	E.XI
119	"Hd Qrs. Creek Nation/Ft. Mitchell Al./20 Decbr. 36," ms. heading on folded letter to Wash., D.C., Red "Columbus Ga. Dec 20" pmk. & matching "Free", ms. "on Service", VF & Very Scarce	E.VIII

IDAHO, INDIANA, IOWA

120	Blackfoot, Idaho Nov 4 1888, Purple Territorial pmk., matching Geometric ties 2c Red Brown on cover to Mich., Hotel Corner Card, stamp margin fault from careless opening, Scarce Town	E.IV
121	Jeffersonville I.T. June 24th (Indiana Terr.), ms. pmk., ms. "12 1/2" rate on 1805 folded letter to Ohio, quite aged & worn, nevertheless Very Rare & Extremely Early Indiana Territorial cover, Illustr. in Baker, Vol. 1, p 35	E.IX
123	Vincennes I.T. Aug 29, Bold Red Rimless pmk., ms. "17" rate on 1807 folded letter to Kaskaskia, minor water staining at T., o/w VF, A Rare & Important Indiana Territorial Cover, Illustr. in Baker, Vol. 1, p 19 (Photo)	E.XIII

124	Burlington I.T. Sep 18 , Clear Red pmk., Bold matching "Paid", ms. "12½" on fresh 1843 folded letter to Ill., Fine	E.IV
125	Davenport Iowa, May 10 , Bold oily Red pmk., ms. "paid 12½/E.C" on 1842 folded letter to Ill., ms. docketing & "squiggle" at L., o/w VF	E.III
126	Davenport Iowa. Nov 28 , Beautifully Struck Dark Blue pmk., matching "Paid", ms. "12½" on fresh 1842 folded letter to Ill., light toning along couple filing folds, o/w Extremely Fine, A Beauty	E.IV
127	Davenport Iowa. Dec 18 , Bold Blue pmk., ms. "25" on 1843 folded cover to N.Y., VF	E.IV
128	Davenport Iowa. Sep 4 , Bold Blue pmk., matching "Paid" & ms. "10" on 1844 folded letter to Ill., VF	E.IV
129	Du Buque/Mar 3- , Bold ms. pmk., matching "18¾" on 1839 folded letter to St. Louis, Fine	E.IV
130	Dubuque I.T. Sep 22 , Bold pmk., ms. "18¾" on 1839 folded letter to Ill., bit worn, VF Strike, Scarce	E.VIII
131	Fort Madison I.T. Aug 5 , Mostly Clear Iowa Territorial pmk., ms. "25" on 1843 folded letter to Pa., slight aging, o/w Fine	E.V
132	Oskaloosa IT/Jan 25th , ms. Iowa Terr. pmk., ms. "free . . . P.M." on 1846 folded letter to Iowa City, toning & age specks, o/w VF, Stampless Cover Cat. Listing made from this Cover	E.V

KANSAS

133	Lawrence K.T. , Light pmk. ties 3c Red (11), Margins to slightly in, on cover to Ohio, Fine	E.V
134	Leavenworth City K.T. , Bold pmk. ties Four Margin 3c Red (11), Unusually Rich Shade, Quite Probably the so-called "1856 Orange Brown", on fresh cover to N.Y., VF in All Respects	E.V
135	Leavenworth City K.T. May 12 1858 , Bold pmk. Perfectly ties 3c Red (26) on cover to Mich., slightly reduced at L., o/w VF, Excellent Strike	E.IV
136	Leavenworth City K.T. Apr 8 1859 , Bold pmk. neatly ties 3c Red (26), couple minor margin faults, on cover to N.Y. State, VF Strike	E.III
137	Wabaunsee KT , Mostly Clear pmk. ties 3c Red (26) on cover to Minn., Fine & Scarce Kansas Territorial	E.VI
138	Wyandott K.T. , Bold Kans. Terr. pmk. on 3c Red Entire (U10) to Phila., Extremely Fine	E.V

LOUISIANA

139	N. Orleans * May 6 , Bold Str. Line pmk., ms. "25" on 1804 folded cover to N.J., VF, Exceptionally Rare & Attractive Pre-Territorial Cover, Earliest Reported Date of this Postmark	E.XIII
140	N Orleans * June * 16 , Bold U/L Case Str. Line pmk., ms. "Public Service/Jer Taylor/asst. my. agent" over "25" on 1804 folded letter to Phila., Extremely Rare Pre-Orleans Territory Marking, docketed at L., VF, Very Choice, ex-Meyer	E.XIV
141	N. Orleans June 30th , ms. pmk., matching "25" rate on 1804 Pre-Territorial folded letter to Phila., neat ms. docketing at L., Fine & Rare	E.XII
142	New * Orleans Feb 19* , Mostly Bold pmk., ms. "75" on 1805 folded letter to Phila., VF, Handsome & Rare	E.XII
143	New * Orleans * Apr 2 , Bold Territorial pmk., ms. "25" on 1805 folded letter to Tenn., discusses Slavery, VF & Rare	E.XII

144	New Orleans Oct 25 , Clear pmk., ornaments Above & Below date, ms. "25" on 1808 folded letter to Phila., VF & choice Territorial (Photo)	E.VIII
-----	---	--------

- 145 ☒ **New Orleans May 14**, Mostly Clear **Territorial** pmk., Ornaments above & below date, ms. "25" on 1810 folded letter to Boston, ms. "Fort Stoddert Mail" (Ft. Stoddert was slightly North of Mobile in what was then Miss. Terr.), fine & Rare(Photo) **E.VIII**
- 146 ☒ **New Orleans Dec 19**, Bold pmk., Ornaments above & below Date, ms. "25" on folded letter to N.H., ms. "Mail via/Fort Stoddert", VF (ms. "1808" on back in diff. hand than other docketing, so Territorial usage cannot be verified) **E.VI**

MAINE, MICHIGAN, MINNESOTA

- 147 ☒ **Exeter** (District of Maine), ms. pmk., ms. "**15" War Rate** on Dec. 1815 folded letter to "Colo. Isaac Lane, Saco. Maine.", some age staining, o/w Fine, Scarce **E.V**
- 148 ☒ **Portld. Me. [Jan.][22]**, Clear District of Maine pmk., ms. "Sh 19" on 1804 folded letter, Fine & Scarce Territorial **E.IV**
- 149 ☒ **Detroit Michigan. Dec 6**, Clear Red Territorial pmk., matching "Paid" in Arc, ms. "25" on 1832 folded cover to Phila., Fine **E.III**
- 150 ☒ **Detroit Michigan Mar 6**, Red Territorial pmk., ms. "18¾" on 1833 folded letter to Ohio, toned spot at partly broken filing crease, o/w Fine **E.II**
- 151 ☒ **Detroit Michigan Dec 27**, Clear Territorial pmk., matching "Paid" in Arc, ms. "paid" & "50" on 1836 folded cover to Ill., Fine **E.III**

- 152 ☒ **Green Bay M. T.**, Clear 32mm Circle U/L Case, ms. "July 4" date & "Free", ms. "On Public Service" on 1836 folded letter to U.S. Army Q.M.G., Washington, D.C., headed "Fort Howard", Fine & Rare(Photo) **E.XIII**

- 153 ☒ **Navarino. M.T./June 1.**, ms. pmk., ms. "25." rate on 1832 folded cover to Phila., sealing wax stain, o/w VF, Very Rare Michigan Territorial (Year Date determined by ms. offset of docketing on flap)(Photo) **E.XI**
- 154 ☒ **Prairie du Chien M.T. July 3**, ms. pmk., ms. "On Public Service" & "50" on large size folded cover to Ill., pencil notation "1835", if correct then Michigan Territory, Fine & Scarce **E.V**
- 155 ☒ **Owatonna MT**, Balloon-type pmk. ties 3c Red (26) on cover to Conn., almost certainly Statehood Use, otherwise First Day of Issue, Fine .. **E.V**
- 156 ☒ **Winona M.T.**, Minn. **Territorial** pmk., "Paid 3" on 1857 cover to Me., Fine(Photo) **E.VI**
- 157 ☒ **Saint Paul M.T., Nov. 20, 1856**, but blurry Territorial pmk. ties Horiz. Pair of 3c Red (11) on large size cover, "American House, St. Paul, Minnesota" in Blue Shield corner card, cover mend at T., o/w Fine, Handsome Cover **E.IV**

MISSISSIPPI

- 158 ☒ **F * Adams * Oct 5** (Fort Adams), Bold Str. Line U/L Case pmk., ms. "(Public Service)", "Free" & "Jacob Kingsbury L'Colonel/1st Regt Infantry" on 1807 folded cover to Sec. of War, Wash., D.C., VF, Choice & Important Mississippi Territorial Cover(Photo) **E.XIV**
- 159 ☒ **Ft. Stoddert M.T./Dec. 23**, light ms. pmk., matching "17" on 1811 folded letter to New Orleans, written from Mobile, Fine & Rare Mississippi Territorial(Photo) **E.XII**

- 160 ☒ **Greenville M.T. 10th February**, ms. pmk., matching "Free" on 1807 folded letter to P.M. "St. Louis Mississippi", aged & with small piece out at T., o/w Fine, Rare & Very Early(Photo) **E.X**

161	✉	Natchez * Sep-1 , Wonderfully Bold Str. Line pmk., trifle double struck, ms. "Free" on 1807 folded cover to "The Honble Henry Dearborn/ Secretary of War/Washington", VF & Rare, Marvelous Miss. Territorial Cover(Photo)	E.XIII
162	✉	Natz. MT Jan 24 , Very Clear pmk., ms. "25" on fresh 1810 folded letter to R.I., VF & Rare, Earliest Recorded Date of this Postmark in Stampless Cover Cat.(Photo)	E.IX
163	✉	Natz. MT Oct 8 (Natchez Miss. Terr.), Light pmk., ms. "25" on 1811 folded letter to Ky., slight wear, o/w Fine, Scarce(Photo)	E.VII
164	✉	pinckney(vi)lle MT, de, 23 , Almost Perfectly struck Str. Line pmk., ms. "Public Service" & "25" rate on fresh 1811 folded letter to S.C., VF, Choice & Rare Mississippi Territorial(Photo)	E.XIV
165	✉	St. Stephens MT , Bold Str. Line pmk., ms. "June 8th 1807", ms. "25" crossed out & "Free" added on folded cover to "Henry Dearborn . . . Secretary of War Washington", minor water stains, Rare Postmark(Photo)	E.XIII
166	✉	Washn MT Dec 1 , Clear Miss. Terr. pmk. (date changed to "5" in ms.), ms. "Public Service/Jos. Bickley/Mily. Storekeeper", "37½" crossed out & "Free" added on 1815 folded letter to Phila., Fine & Rare Cover(Photo)	E.X
167	✉	Washn MT Dec 26 , Clear pmk., ms. "37½" crossed out & "Free" added, on 1815 folded letter to "Commy. Genl. of Purchases/Philada," Fine & Rare(Photo)	E.X

MISSOURI-NEW MEXICO

168	✉	St. Louis , Partly Clear Ty. I Str. Line Territorial pmk., ms. "25" on May, 1818 folded letter to Tenn., toned & some age spotting, Scarce Postmark	E.VIII
169	✉	St. Louis/Oct 22 , Light Ty. II Str. Line pmk., ms. "22 Octo. 1818 25" on folded letter to Ky., bit aged as can be expected, o/w Fine, Rare Missouri Territorial(Photo)	E.IX
170	✉	St. Louis/Aug. 29. , Bold Ty. IV Str. Line pmk., ms. "free A.T. Crane, PM" on 1819 folded Printed Land Agent Circular to N.Y. State, VF & Rare, Choice Historical Missouri Territorial Cover, Earliest Recorded Use of the Ty. IV Postmark(Photo)	E.XI
171	✉	Fort Laramie N.T. Jul 15 , Light Blue Nebraska Territorial pmk., matching "Paid" over "3" on cover to S.C., ms. docketing at L., minor cover toning, o/w Fine, Very Rare(Photo)	E.X
172	✉	Kearny City NT April 19/64 , light ms. pmk. & ms. cancel tie 3c Rose (65), corner tear, on cover to Mich., minor faults, Scarce(Photo)	E.IV
173	✉	Omaha City N.T. , Faint pmk. ties 3c Red (26) on cover to Ohio, Scarce ..	E.II
174	✉	Nebraska City Neb. Sep. 10, 1860 , Clear Territorial pmk., matching Grid ties 3c Red (26) on cover to Vt., VF(Photo)	E.IV
175	✉	Carson City U.T. Jun 4 , Blue Nevada Territorial pmk., matching Target ties Well-Centered 10c Green (68) on cover to Mass., skillfully repaired tear at T. just affecting pmk., o/w VF, Rare (Carson City had been part of Utah Terr. until about 1857)(Photo)	E.VIII
176	✉	"Santafe October 22d 1841," ms. heading on folded letter to Colombia, Mo., ms. Forwarders' marking, "Independence Mo. Dec 20" pmk., ms. "183", Fine, Rare Early New Mexico Cover(Photo)	E.IX
177	✉	Santa Fe N. Mex , Mostly Bold Territorial pmk. & Quartered Cork on 3c Pink Entire (U35) to Wash., D.C., Carrier pmk. on back, Fine ..(Photo)	E.VII

NORTHWEST TERRITORY, OREGON

178	✉	Marietta/18 July , ms. pmk., ms. "25" rate on remarkably fresh 1800 folded letter to Ct., minor reinforcement along internal folds, o/w Extremely Fine, A Magnificent Rare Northwest Territory Postal History Cover(Photo)	E.XIII
179	✉	Ft. Kearny. O.R. , Ornate Blue Oregon Territorial Oval pmk., Eagle above, Stars below, ms. "June 1/52" date & "5" rate on folded letter to Tenn., Fine & Very Rare(Photo)	E.XIII
180	✉	FT. LARAMIE O.R. , Faint Oregon Territorial pmk., Light Str. Line "Jun 15", Boxed "PAID" & Crude Negative "5" on folded letter to Tenn. dated "June 11th 1852", minor aging & couple small ink stains in address, Rare	E.X
181	✉	Lafayette O.T. Austust 2 1854 , ms. Oregon Territorial pmk., "10" rate on folded letter to Tenn., VF & Rare(Photo)	E.XII
182	✉	Lafayette O.T./Feb 9 , ms. Oregon Territorial pmk., "10" rate on 1854 folded letter to Tenn., trivial aging, o/w Fine, Rare(Photo)	E.XI
183	✉	Oregon City Orgn. , light Forwarding pmk. on 1851 folded letter, Red "Weston Mo. Sep 12" pmk., Large Red "5" obliterated & small Red "10" added, final destination Astoria, cover aged & bleach spots, Very Scarce Oregon Territorial	E.VI

TEXAS REPUBLIC, UTAH, WYOMING

184	✉	Houston***Texas***Jul 8 , Mostly Clear Double Line Double Oval pmk., ms. "50" on folded cover to Galveston, age toned, Scarce Texas Republic Postmark(Photo)	E.VIII
185	✉	Camp Floyd, U.T. April 8 , Bold Rimless pmk., matching "Paid 3" on fresh 1859 cover to N.Y., ms. "Charge Major Porter/3 Cents", VF, Rare Marking, Latest Recorded Use of this Marking(Photo)	E.XII
186	✉	Fort Bridger U.T. , Bold pmk., ms. "X" cancels on two 3c Rose (65), not tied on fresh buff cover to N.Y. state, trifle reduced at L., VF & Rare(Photo)	E.VIII
187	✉	Salt Lake City U Jan 28 '68 , Bold Double Circle pmk., matching Target ties average 3c Rose (65) on cover to Iowa, Fine	E.V
188	✉	Laramie City Wyo. , Rimless Circle pmk., Quartered Cork cancel ties 3c Green (158) on cover to Mich., Fine Territorial	E.III

WISCONSIN

189	✉	Forwarded from Belmont , ms. pmk. on 1837 folded cover, "Dover. De. Apr 28" pmk. of Origin, ms. "25" rate, Forwarded to Mineral Point with ms. "6" forwarding charge, Fine & Very Unusual	E.IV
190	✉	Belmont W.T./April 8th , ms. pmk., ms. "25" rate on fresh 1837 folded letter to Mich., VF	E.IV
191	✉	Belmont , ms. pmk., matching "paid 5" on May 1846 folded letter to Iowa, Fine	E.IV
192	✉	Beloit Wis. Oct 25 , Mostly Clear Red pmk., matching "Paid" & ms. "5" on 1845 folded letter to Ill., toned band along partly broken filing bend o/w Fine	E.II
193	✉	Darien W.T. , ms. pmk., "25" rate on April 1842 folded letter to N.Y., VF	E.V

194	✉	Delavan Wis. , Wonderfully Bold Red pmk., ms. "25" on July 5, 1844 folded letter to N.Y., VF & Choice(Photo)	E.V
195	✉	Dubuques Mines Mic. T. Feb 13 , Clear pmk., matching "Free" on 1837 folded letter to Washington, minor water stain, o/w Fine, Rare Late use in Wisconsin Territory before First Alteration of the Postmark(Photo)	E.XIII
196	✉	Dubuque W.T. Jan 2 , Partly Clear Forwarding pmk., Red "Milwaukee Wn. T. Dec 7 pmk., ms. "18¾," ms. Forwarding postage "18¾" & total "37½" below, on 1838 folded letter, Rare(Photo)	E.XIII
197	✉	East Troy, W.T./Apl. 25. 1841 , Bold ms. pmk., matching "25" on folded cover to N.Y., VF	E.V
198	✉	Elk Horn W.T. , ms. pmk., "25" rate on Feb 1845 folded letter to N.Y., Fine	E.VI
199	✉	Fond Du Lac, W.T. , Lightly inked Blue Oval pmk., additional ms. "Fond du Lac, W.T., June 13" pmk. & matching "Free" on 1845 folded letter to Maine, Fine & Very Unusual	E.VI
200	✉	Fort Atkinson Wis./August 5th , Blue ms. pmk., matching "free" on 1842 folded letter to Ill., few tiny toned specks in address, o/w VF, Rare Earliest Reported Ft. Atkinson Postmark(Photo)	E.IX
201	✉	Fort Win(nebago) Wis.T. , Partly Clear Red pmk., ms. "25" & "O.P. Service" on fresh Aug. 1840 folded letter, Scarce	E.V
202	✉	Fort Winnebago Wis. T.Feb 25 , Light Red pmk., ms. "25" on 1845 folded letter to N.Y., some reinforced splits along folds, o/w Fine	E.IV
203	✉	Fort Winnebago Wis. T. , Bit blurry Green pmk., ms. "5" on Oct 2, 1845 folded letter to Green Bay, Fine	E.VI
204	✉	Fort Winnebago Wis. T. , Mostly Bold pmk., ms. Date & "10" rate, Red "Paid" on March 5, 1846 folded letter to N.Y., Fine	E.V
205	✉	Geneva W.T. , Clear pmk., ms. date & "25" rate on Nov. 1840 folded cover to N.Y., VF(Photo)	E.V
206	✉	Geneva Wis. , Red pmk., matching "X" in Circle on Nov. 1846 folded letter to N.Y., also incl. faint strike of same pmk., ms. "Feb 29" date & "A Ferguson P.M/free" on 1848 folded letter to N.Y., Scarce Lot	E.IV
207	✉	Green Bay Wis. T. , Bold Red pmk., ms. "12½" on March 1840 folded letter to Milwaukee, neat ms. docketing across pmk., Fine Cover	E.III
208	✉	Green Bay Wis. T. Jun 9 , Light Red pmk., matching "Free", ms. "(On Service)" on 1845 folded cover to Wash., D.C., Fine	E.III
209	✉	Green Bay Wis. T. , Light Red pmk., ms. "10" on Nov. 10, 1845 folded letter to Maine, Fine	E.III
210	✉	Green Bay Wis. T. Nov 21(?) , Mostly Clear Red pmk., ms. "10" crossed out on 1845 folded letter sent free to Washington, D.C., Fine	E.III
211	✉	Green Bay Wis. T. Feb 20 , Red pmk., matching "X" crossed out in ms. on folded cover "To his Excellency James K. Polk, President of the United States, Washington City, D.C.", thus Territorial usage, Fine	E.V
212	✉	Janesville W.T. , ms. pmk. no rate but sent to a P.M. so probably Free, on March 1843 folded letter to Vt., Fine	E.IV
213	✉	Janesville Wis. , Mostly Clear Green pmk., ms. "25" on May 1845 folded letter to N.Y., Fine & Scarce(Photo)	E.VIII
214	✉	Janesville Wis. , Brown pmk., ms. 5 on July 23, 1846 folded letter to Watertown, W.T., Fine & Scarce, Cover from which Stampless Cover Cat. listing made	E.V
215	✉	Janesville Wis. , Light Red pmk., ms. "Free" on Jan. 11, 1848 folded letter, Fine	E.III
216	✉	Madison W.T. , ms. pmk., matching "Paid" & "12½" on July 24, 1838 folded letter to Green Bay, Fine	E.V
217	✉	Madison Wisc. , Red pmk., Bold matching "Paid", ms. "25" on Dec. 1841 folded cover to N.Y., Fine	E.III
218	✉	Madison Wisc. Apr. 12 , Readable Yellow pmk., matching "Paid" & ms. "10" on 1843 folded letter to Ft. Winnebago, Scarce	E.IV

219	✉	Madison Wisc. , Clear Orange Red pmk., matching "10" on April 21, 1847 folded cover to N.Y., Fine	E.III
220	✉	Meeker May 17/Wis. , ms. pmk., Blue ms. "25" on folded letter to R.I., probably 1845 usage, bit aged, o/w Fine, Scarce	E.VI
221	✉	Milwaukie Aug 18th/W.T. , Bold ms. pmk., matching "25" on 1836 folded letter to Ohio, VF, Illustr. in Stampless Cover Cat.	E.VI
222	✉	Milwaukie Wn. T. , Red pmk., matching "Free" on Nov. 1840 folded letter to N.Y. State, Fine	E.III
223	✉	Milwaukee Wis. , Bold Red pmk., matching "Paid", ms. "18¾" on Dec 1843 folded letter to Mich., VF	E.III
224	✉	Milwaukee Wis. , Bold Red pmk., ms. "25" on Dec. 1846 folded letter to N.Y., VF, Dr. Chase note on back	E.III
225	✉	Milwaukee Wis. , Bold Blue pmk., matching "Paid" & "X" in 30mm Circle on March 1846 folded letter to N.Y., Fine	E.II
226	✉	Milwaukee Wis. , Bold Blue pmk., matching "Paid" & "10" in Large Dotted Circle, on 1846 folded letter to Ct., negligible aging, o/w VF	E.III
227	✉	Milwaukee Wis. Dec 4 , Blue pmk., matching "10" in small dashed circle crossed out & ms. "Official Business" added on 1847 folded cover to Wash., D.C., Fine	E.III
228	✉	Milwaukie Wis. , Blue pmk., matching "10" in Dashed Circle (crossed out in ms.) on Jan. 1848 folded cover to Wash., D.C. Fine	E.III
229	✉	Milwaukee Wis. , Blue Territorial pmk. (Prob. 1846-48), matching "Free" on folded cover to "His Excellency James K. Polk, President of the United States. Washington," toned band along filing fold, o/w Fine	E.II
230	✉	Minl Point/WT 13 Feb (Mineral Point), ms. pmk., matching "25" crossed out & "50" added on 1837 folded letter to Ohio, Fine & Scarce, Four Months Earlier than listing in Stampless Cover Cat.	E.V
231	✉	Mineral Point Wis. T. Jun 26 , Partly Clear Red pmk., ms "18¾" on 1840 folded letter to Ill., Forwarded with Red "Ottawa Ill." pmk., ms. "Ford 12½" & total "31", Fine	E.V
232	✉	Mineral Point Wis T. , Red pmk., ms. "10" on Oct. 1845 folded letter to Pa., VF	E.V
233	✉	Mineral Point Wis T. , Clear Red pmk., ms. "20" on large size folded cover to Phila., ms. "Via Detroit & Buffalo", no evidence of year of use, Fine	E.IV
234	✉	Mt Pleasant WT , Blue ms. pmk., matching "25" on June 1845 folded letter to N.Y. State, lightly toned at R., o/w Fine	E.III
235	✉	New Diggings. WT , Str. Line pmk., ms. "Feb 23d" date below, Bold "10" in Circle on 1846 folded letter to Vt., somewhat aged, Rare Postmark (Photo)	E.XII
236	✉	New Diggings. W.T. , Bold Arc pmk., ms. "Mar 8" date, "10" in circle on folded cover to Vt., prob. 1847, minor wear, VF & Rare Strike (Photo)	E.XIII
237	✉	New Diggings WT/Oct 6 , ms. pmk., ms. "10" rate on 1847 folded letter to Vt., somewhat aged, o/w Fine, Scarce	E.VII
238	✉	Oak Creek , ms. pmk., matching "12½" on Nov. 1838 folded letter to Green Bay, ms. markings at R., o/w Fine	E.V
239	✉	Oak Grove W.T. , ms. pmk., matching "Paid 5" on Jan. 1847 folded letter to "Ioway", VF	E.V
240	✉	Palmyra WT/Sept. 4/Paid , ms. pmk., matching "Paid 5" on 1847 folded letter to Oakland, VF & Scarce, Earliest Reported Date in Stampless Cover Cat.	E.VI
241	✉	Paris W.T/July 19/1845 , ms. cancel, matching "Paid" & "10" on folded letter to N.Y. State, Fine & Scarce, Earliest Recorded Date in Stampless Cover Cat.	E.VI
242	✉	Platteville Wisc. , Clear Red pmk., Bold matching "Free" on July 1842 folded letter to Maine, some very minor toning along couple folds, o/w Fine	E.IV

243	✉	Platteville Wisc. , Red pmk., ms. "25" rate on Feb. 1844 folded letter to N.Y. State, minor staining at R., o/w Fine	E.IV
244	✉	Platteville Wisc. , Bold Red pmk., matching "Paid" & "10" on Jan. 1845 buff envelope to N.Y., negligible toning, VF Strike	E.IV
245	✉	Pleasant Prairie , ms. pmk., matching "25" rate on Nov. 1840 folded letter to Vt., minor aging & few splits along folds, o/w Fine	E.IV
246	✉	Prairie du Chien W.T./Apl. 11th , ms. pmk., matching "Tho. P. Street P.M./Free" on 1839 folded letter to Mo., slight soiling & wear, Fine	E.IV
247	✉	Prairie Du Chien Wis. , Brown pmk., matching "Free", ms. "On Public Service" on Jan. 1841 folded letter to U.S. Army Q.M.G., Washington, D.C., headed Fort Crawford, cover very brittle with splits along folds, Fine Strike	E.III
248	✉	Prairie Du Chien Wis. , Apr 10, Red pmk., ms. "25" on 1843 folded letter headed Fort Crawford, VF	E.IV
249	✉	Prairie Du Chien Wis. Jul 18 , Bit blurry Red pmk., ms. "10" & "Public Service" on 1845 folded cover to Wash., D.C., Fine	E.III
250	✉	Prairie Du Chien Wis. Aug 19 , Red pmk., ms. "On Service/10" on 1846 folded cover to Washington, D.C., VF	E.IV
251	✉	Prairie Du Chien Wis. , Red pmk., ms. "10" on Aug. 1846 folded letter to Surgeon General, Washington, D.C., headed "Fort Atkinson", Fine	E.III
252	✉	Prairie Du Sac W.T. , ms. pmk., matching "5" on April 1847 folded letter to Iowa, Fine	E.IV
253	✉	Prairie Village/E.T. Mch 26 , ms. pmk., "25" rate on 1842 folded letter to N.Y., minor stain at T., o/w VF	E.V
254	✉	Prairieville Wis. , Mostly Bold Blackish Blue pmk., ms. "25" rate on March 1844 folded letter to N.Y., Fine	E.V
255	✉	Racine Wis. T. , Mostly Clear pmk., Bold "Paid", ms. "25" on Jan 1842 folded cover to England , 1sh due mark, Red receiving backstamp, some wear at edges, Scarce Usage	E.III
256	✉	Racine Wis. T. , Mostly Bold, partly doubled Red pmk., ms. "25" on March 1845 folded letter to N.Y., Fine	E.III
257	✉	Racine Wis. T. , Clear pmks. on 1845 & 1847 folded letters, former "5" in Box to Gov. Dodge, other "10" in Circle to N.Y., Fine Lot	E.VI
258	✉	Racine Wis. T. , Blue pmk., matching "Paid" & "10" in Circle on June 1846 folded letter to Ct., Fine	E.III
259	✉	Racine Wis. T. Jul 30 , Clear Greenish Blue pmk., matching "10" in Circle on 1846 folded letter to Ct., Fine	E.III
260	✉	Rochester W.T./Nov 21, 1841 , Blue ms. pmk., "25" rate on folded letter to N.Y.	E.IV
261	✉	Rochester Wis. Jan 5 , Clear Green pmk., ms. "25" on 1843 folded letter to Vt., Fine & Scarce, Earliest Recorded Date	E.IV
262	✉	Rubicon Wis. , ms. pmk., matching "Free" on June 1847 folded letter to N.Y. State, aged, o/w Fine	E.V
263	✉	Sheboygan W.T. , Light pmk., ms. date & "10" rate on March, 1848 folded letter to N.Y., minor ink smear in address, o/w Fine	E.VI
264	✉	Southport Wis. T. , Red pmk., ms. "25" on April, 1838 folded letter to Vt., Fine	E.III
265	✉	Southport Wis. T. Jun 30 , Bold pmk., matching "Paid", ms. "25" on 1843 folded cover to N.Y., Fine	E.III
266	✉	Southport Wis. T. , Red pmk., ms. "25" on May 1845 folded letter to Ct., Fine	E.III
267	✉	Southport Wis. T. , Clear pmk., Bold matching "Paid" & "10" in Octagon, also ms. "Paid" & "10" on Dec. 1846 folded cover to N.Y., minor soiling along filing folds, o/w Fine	E.III
268	✉	Southport Wis. T. Apr 7 , Very Bold pmk., matching "Paid" & "10" in Octagon on 1847 folded cover to N.Y., VF	E.III
269	✉	Sugar Creek/Sept the 1/Wis Ty , ms. pmk., "25" rate on 1842 folded letter to N.Y., couple small ink smears in pmk., Fine	E.IV

270	✉	Summit W.T./May 18, 1844 , Bold ms. pmk., matching "25" rate on folded letter to N.Y., VF	E.V
271	✉	Summit Wis. , Bold Blue Gray pmk., ms. "10" on April 1847 folded letter to Ct., VF	E.IV
272	✉	Tachora W.T. , Bold ms. pmk., matching "10c" on March 1847 folded letter to N.Y. State, VF	E.V
273	✉	Theresa/Dodge Co/WT Mar 21 , Bold Blue ms. pmk., matching "10" on 1848 folded letter to Ohio, VF & Rare, the cover from which the Cat. Listing Made (pmk. incorrectly stated to be Black)(Photo)	E.VII
274	✉	Vernon Wis/30 June 1842 , ms. pmk., matching "25" rate on folded letter to N.Y., VF, Earliest Recorded Date in Stampless Cover Catalog	E.IV
275	✉	Watertown Wisc. , Light Blue pmk., matching "Paid" & ms. "5" on Sep. 1847 folded letter to Iowa, Fine, Unlisted in Blue as Territorial Usage	E.V
276	✉	Waupun W.T. Nov 19 , Large Bold ms. pmk., matching "10" on fresh 1845 folded letter to Pa., Extremely Fine, Earliest Reported Cover from Waupun	E.V
277	✉	Waupun W.T. , ms. pmk., matching "10" rate on Nov. 1846 folded letter to Pa., VF	E.V
278	✉	West Mt. Pleasant W.T. , ms. pmk., matching "25" rate on Feb. 5, 1838 folded cover to Miss., somewhat aged & worn, Very Scarce, Stampless Cover Cat. listing made from this cover	E.VI
279	✉	White Water Wis. , Bold ms. pmk., matching "25" on March 20, 1842 folded letter to N.Y., VF, Earliest Reported Marking in Stampless Cover Cat.(Photo)	E.VI
280	✉	Whitewater Wis. , Bluish Green pmk., ms. "25" on May, 1845 folded cover to N.Y., Fine & Scarce(Photo)	E.VII
281	✉	Whitewater Wis. , Clear Red pmk., matching "X" on April 1847 folded letter to N.Y., Fine	E.IV
282	✉	Yorkville W.T. , ms. pmk., matching "25" on March 1844 folded letter to N.Y., few negligible age specks, o/w VF	E.IV

END OF FIRST SESSION

In the event of a Postal Strike it is possible that we will have to postpone this Sale.

SECOND SESSION

OCTOBER 18, 1978 — 1:30 P.M.

FORTS & MILITARY CAMPS

283	☒	"Camp Near New Orleans/1st Novr 1821", ms. heading on folded letter to Wash., D.C. Red "New Orleans" pmk., matching "Free" & ms. "On Service", some splits along internal folds, also incl. 1822 folded letter from same corresp., same markings but headed "New Orleans," Fine Lot	E.IV
284	☒	Fort Defiance N.C./20 Decr, 1848, ms. pmk., matching "paid 15 cents" on folded letter to Raleigh, Fine	E.V
285	☒	Fort Gaines Ga Dec 30, Bold pmk., matching "Paid" & ms. "5" on 1846 folded letter to Augusta, VF	E.III
286	☒	"Fort Hawkins 13 February 1816", ms. heading on folded letter, "Mille G" pmk., ms. "On Public Service!" & "Free" to Washington, Forwarded to Phila. with Brown "Washn City Mar 29" pmk., Fine & Scarce	E.IV
287	☒	Fort Hawkins (Ga.)/15 Oct, ms. pmk., matching "Free" on 1818 folded letter to Wash., D.C., VF & Very Scarce (Photo)	E.IX
288	☒	Fort Hawkins/25 Feby (Ga.), ms. pmk., matching "Free", also ms. "On Service/Thos R. Brom/P.M. 4th Inf." on 1819 folded letter to Wash., D.C., Fine, Rare & Most Unusual (Ft. Hawkins supposedly Abandoned in 1817)	E.VIII
289	☒	"Head Quarters Bay of St. Louis/Sept. 8, 1818" (Miss.), ms. heading on folded letter to "Brig Gen. T.S. Jessup . . . Washington City," "New Orleans Sep 10" pmk. & matching "Free," Franked ms. "Service/E.W. Ripley M. Genl.," later signed by him, Fine & Rare	E.VI
290	☒	Jefferson Barracks Mo/June 20, 1834, Bold ms. pmk., ms. "25" rate on fresh folded letter to Mass., ordering an Infantry Officer's Sword, VF, Extremely Early (Photo)	E.VII
291	☒	Fort Jesup La. Oct 7, Bold Greenish Blue pmk., matching "Free", ms. "On Service" on 1837 folded letter to Wash., D.C., VF, Early	E.IV
292	☒	Fort Jesup La. Sep 13, Blue pmk., matching "Paid" & ms. "25" on 1837 folded letter to N.Y. State, headed "Camp on the Sabine River," Fine	E.IV
293	☒	Fort Jesup La., Perfectly Struck pmk., ms. "Nov. 28" date & "25" rate on 1844 folded letter to Md., headed "Camp Wilkins near/Fort Jesup La", minor toned band, o/w VF, Choice	E.IV
294	☒	Fort Jesup La. Jul 28, Partly clear pmk., ms. "10" "Pub service" on 1845 folded letter to U.S. Army Paymaster Gen'l, letter mentions Troops "en route for Texas," Fine Historic Letter	E.IV
295	☒	"Fort Johnson So Carolina/December 20th 1809", ms. heading on folded letter to Phila., "Charln S Ca." pmk., ms "25" & "Public Service, VF	E.V
296	☒	"Fort Johnson So Carolina/March 6th 1810", ms. heading on folded letter to Phila., "Charln S Ca Mar 7" pmk., ms. "On Public Service" & "25", Fine & Scarce	E.V
297	☒	Cant Leavnworth, ms. pmk., matching "Paid 37½" on March 1835 folded cover to St. Louis, small mend at T., o/w Fine, Very Scarce (Photo)	E.X
298	☒	Cant Leavenworth Mo/10 June, ms. pmk., ms. "10" on 1837 folded cover, VF & Rare (Photo)	E.XII

Respectfully submitted
to the Secy of War
H. S. M. 3, 1863

9

H. S. Excellency,

Abraham Lincoln,
President of the U. S.

House, Verses May 10, 1899

you please furnish

week rail
while load
cut rails

21

3	02
2	25
23	80
7	60
0	30

and chp. to the
my afc.
Household.

G. J. Taylor

\$5.30

MA 18

28

Louisville Ky
27 Dec 1893

Public Service
J. Taylor major
7th Regt

19

STATION ROUGE
LOUISIANA
MAY 19

29

On service
FILE

Adjutant General's Office
Washington City

Accountants Office
Washington City

COLLEGE
MAY 18
HARDY S. C.

36

DONALDSON
T. T. N. O.

33

The President Directors &c.
of the Louisiana State Bank
New Orleans

LIBERTY
SEP 26
H. O.

39

Major Tucker

Nov 18 Dec 1

43

Thomas A. Cushing
Adjutant General

N. York Dec 9

49

4

Mrs Abigail Goodenow
Portsmouth
New Hampshire

Post
N. York

WESTERN UNION TELEGRAPH

P. M.
New Crofton
Ind.

50

Jan 6

64

H. C. S. Epaphrodites

WEST. VERIDENCE

June 13

63

5

Map Pierpont & Mallory

Columbia A. T.
May 24th

76

Fayetteville A. T.
Feb 4: 28th

25

77

Harrisburgh A. T.

July 1st 1830

78

James

Sackett A. T.
Feb 7th

79

Free
H. S. Sullivan & Co.

LITTLE ROCK
DEC 20
ARK.

80

FREE

C. B. Esq.

Washington

prim Bluff
Aug 1st 30th

81

10

Duncansville
June 8th 1842

91

John J. Ponder Esq.
Jefferson County

Single Only.
KEY WEST
SEPT 15
FLORIDA

96

PAID 23

Mrs Hannah Chapman
Winchester
Frederick County
Virginia

ENSA
AUG
23

101

on service.

free

NOTICE
MAY
20
1842

100

AUGUSTINE
SEPT
20

103

On pub serv
FER

Dr. Genl J. S. Isaac
L. W. Ward



104

Colonel Roger Jones

Dec. 15 1854



107

Hon. Mr.

John St. Eaton



106

(On Public Service)
To,
General N. Jones
Adj^t General U. S. Army
Washington
D. C.



108

V.D.

Miss Eliza M. Hutchinson



111

"On Public Service"



113

10

Hon. Walter Linn
22 Centre St.



112



116

Paid 10



114

Genl. R. Jones
a Genl. W.

Mr. Wm. Wingate
Lexington
Scott County
Indiana



117

183/4

L. C. D.



119

On Service
FREE



118

On Public Service

Madison
La. Mar. 11

41A

183/4

Drig^r Genl. A. Jones
D. C.

Th. Rev. C. D. Swift
S. P. M. S.

VINCENNA
AUG. 21
123
Madame & Madame
Neward

134
BUS. G. J. PORTER
22

DUBUQUE
130
83
4

138
YANDON
MAR 23
MT.
25

N. Orleans * May 6
139
The Honble
Jonathan Day

140
25
P. Linnard Esq.

142
Mr Stephen D...

141
25
A. Orleans June 30th
Wm Linnard Esq.
Military Agent

144
25
Stephen D...

143
25
James Winchester Esq.
Merchant

152
On Public Service
Major General Thomas P. Jesup.
Quartermaster General W. J.
Washington City
D. C.

145
25
153
25
Rev. Peter van Pelt, jr.
cor. Sec. D. & F. M. J. Sec. P. E. Church.
Philadelphia.

(Public Service) Jacob King
P. Adams Oct 4
Havilla

158

Henry D

Secretary

Washington

Black Mont? — 117

159

Mont. Armand Beauvais
membre du conseil legis
latif, cher M. Labbe
negociant de Orleans

NATCHEZ Sep-1

161

Free

The Honble Henry Dearborn
Secretary at War



156



J. C. Charles
Upper Gloucester
Maine

Greenfield N.H. 10. February Free

160

Rufus Easton

Postmaster



March 8th

25

162

Messrs Brown & Bros

Merchants

Providence

R. I.

pinckney He MT, de, 23

164

Public Service

Lieutenant Samuel Chamberlain

IN INTEREST OF STEPHEN MT June 8th 18

165

The Honorable

Henry Dearborn

Secretary

Washington



166

Public Service
Jos. Bicker
City Clerk

Free

Gallender Iron & Engine

Comm. of Gen. & Purchasing

Philad^a



167

The
Cassander G.ST. LOUIS
DEC 20

169

22 Oct 1838 JS-

Davis Caldwell

Dannell

ST. LOUIS

170

Jno. F. Grand, Esq.

William



175



Mrs. Mary A. Dow

Care Wm C Ford Esq

Boston



176

1834

Mr James Rolands

Attorney at Law.

Columbia

Missouri

Psd. by
H. Man. (Huron)

177



Francis de H. Canvier,

Washington

D.C.

Jno
H. P.

Mrs Mary Beavers

Cock hill Missouri

County Tenn

179

Marietta
18 July

178

25

Mr James Backus

Norwich

Connecticut

Safeguards O.K. }

Feb 9

Mrs Mary Beavers

10

182



184

Dr A. Smith

Houston

Galveston

Safeguards O.K. }

Feb 2nd 1834 }

10

181

Mrs Mary Beavers

Cock hill

Tennessee

69. *Change Major Postage*
cents
 185
 PAID
 FLOYD, O.
 Mrs. G. J. Porter
 No 66 Union Place

PORT BRIDGE
 DEC 2
 U.S.
 3
 3
 180
 Melisa Price

DELAWARE
 JUL 5
 194
 Rev Milton Badger
 (No. 15)

free
 Hon. A. W. Lewis
 House of Representatives
 Washington City.
 195

182
 Albert G. Ellis Esq
 Attorney General of Wisconsin
 196
 Green Bay Wis.
 841

free
 Postmaster
 200

205
 Rev. Milton Badger
 No. 150. Japan Street

213
 NEW DIGGINGS, WY
 Feb 23
 235
 10

254
 PRAIRIEVILLE
 MAR 3
 Wis.
 Single

236
 NEW DIGGINGS, WY
 Mar 8
 10
 Mr. Ephus Dodge
 Outby Line
 Orleans County
 Vt.

John F. Brasseer 10
Lancaster Fairfield
County Ohio

Mar 21

273

White teeth his
Mar 20

279

23-

Rev. Milton Badger
150 Nassau Street
New York

Rev. Milton Badger

Sec of the A. H. C.



280

New York

No 150 Nassau

Fort Plain
15 Oct

287

Free

Govt Leavenworth

297

Aug 3 1/2

Officer (C. 1111111111)
June 22 1834 } 25

290

Mr. N. P. Ames

Chicago Factor

Near Springfield

H. A. Chouhan
St. Louis Mo

Govt Leavenworth
10 June

298

10



300

A. R. Magruder

Isaac M. Gay
West Port

McIlkinnon
3 May 1855

309

Free

Jackson County Mo

The Honble
Henry D. Canby

Secy. of
City of



311



Ans Nov 14, 1854

Mrs C. M. Leonard
Bridgewater

Massachusetts



313



320

Mr. Lewis Cradell
Baltimore
Green Bay

325



329

12 1/2

Dr. John F. Snyder,
Sacramento City

334



Miss Fanny White,
Care of C. L. White & Co.
No. 65 Beekman St.
New York City

336

JUN 15 1892



Rev. J. H. Smith,
Washington, D.C.

348

Rev. A. C. Peachy
Sacramento

341



Mr. Jonathan Thompson
Near Bar
100



351

Mr. Anders Peterson
Scandia P.O.
Carver County
Minnesota



345

Mrs. M. J. Stearns
care of Mr. Charles Stearns,
Central City,
Rocky Mountain
St. Joe Mo.

PAID 10

Mr. Samuel Ginn
Topsham



340

Maine

257 Enclose Letters in Gov't Stamped Envelopes, and direct, "Care Hinkley & Co's Express, St. Joe, Mo."



352



Mrs. Freeman B. Crocker

12



353



Mr. Joshua Chadbourne
East Baltimore
Baltimore



For
and Jay

354



Mr. Cabot Lull
Memphis Tenn
~~Alabama~~



355



Casper Lowenkron
President
Walter Co
N.Y.



361

Miss Julia M. H. H.



356

Mr. Frank T. Dwyer
Nashville P.O.
Saint Louis Co.
Mo.



378



414

W. S.



417



Mr. Albridge G. Thomas
Asst. Secy
Des Moines



363



Large Hill



2

412



L. M. Reche
Care of J. Aldrich
58 N. 1st St
N.Y.



373



Mr. Pietro Coppini
San Francisco
Cal.



424



442



461



462



466



470



471



472



476



477



490



517



518



519



520



521



526



524



529



530



531



532



533



536



542



546



590



592



593



594



537



537



537



597



597



600



610



611



541



612



612



613



615



619



642



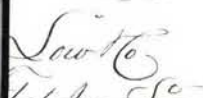
681



686



687



Mail
441
Mep? Clark Holman
City of



Ms. Coll. C. Add. Mrs. Marshall
Catherine Street
Philadelphia



C. Lisha


Miss E. H. Lewis
 Washington
 Dec 26
 1856

Recd
 Apr 25th
 1856



446



paid  45
J. N. Edmonds Esq,
Cashier
New York



San Diego Daily Sun



Miss Flo



Cinda Dresser



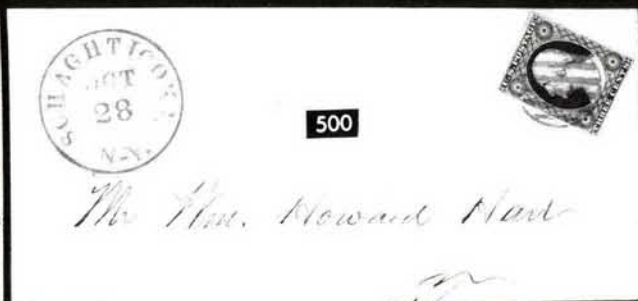
John Hatch Esq
Mansfield
Conn



A. W. Palmer Esq
Cazenovia
Madison Co. N.Y.



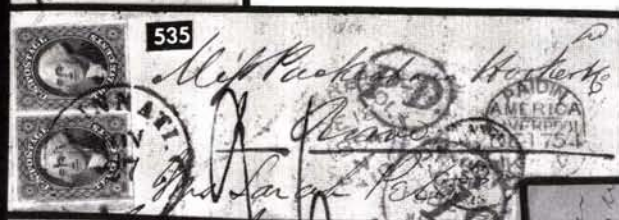
522



500



528



535



538



540



582



539

549



588



603



587



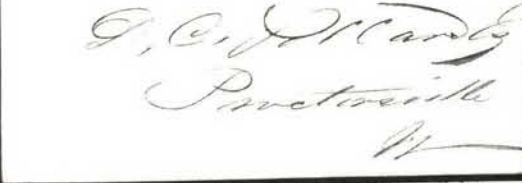
620



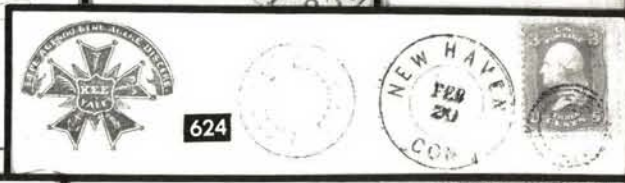
607



606



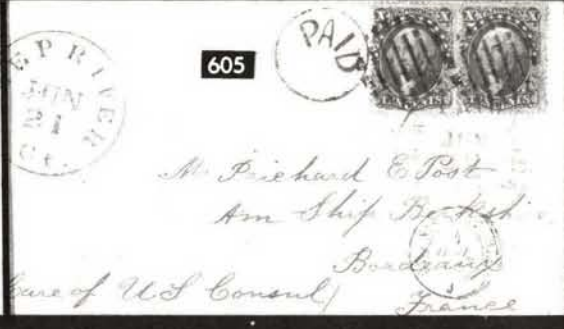
624



605



625



Mr. Richard E. Post
Am Ship Bldg
Boarding
Care of U.S. Consul
France



640



639



634



643



649



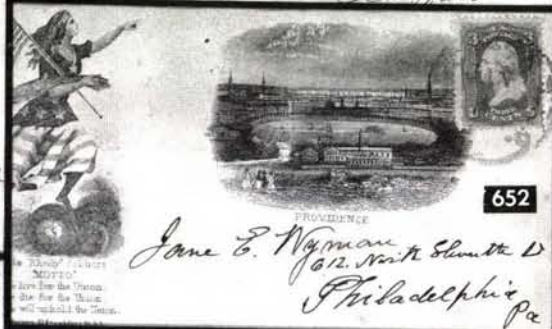
645



650



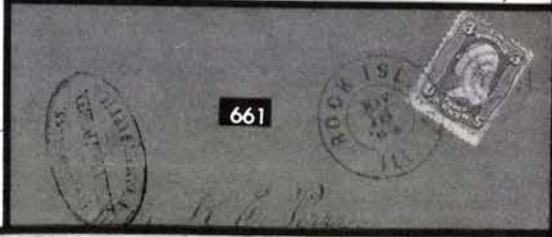
651



652



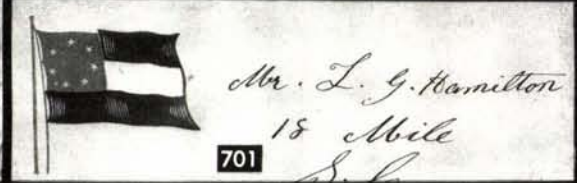
653



661



676



701



707



706

299	✉	Fort Leavenworth Mo. May 21 , Mostly Clear "Missouri Country" pmk., ms. "10" & "On Public Service" on fresh 1846 folded letter to Washington, Fine	E.VI
300	✉	Fort Leavenworth Mo. , Clear pmk., Large Bold "XX" rate on folded cover to Ohio, Fine & Unusual(Photo)	E.VII
301	✉	Fort Leavenworth Mo. Dec 15 , Mostly Clear pmk. on 3c Red Entire (U10), ms. 1857 docketing, some slight age toning, Scarce	E.V
302	✉	"Fort Mackinac, Mackinac County, Michigan July 12th 1841," ms. heading on folded letter to Mt. Vernon, Ohio, Blue "Huron O. Jul 22" pmk. & ms. "S Boat 12½," Fine & Scarce	E.V
303	✉	"Fort Moultrie/Oct 26th 1828," ms. heading, Red "Charn. S.C. Oct 27" pmk. & matching "Paid" on folded letter to Wash., D.C., minor splits along internal folds, o/w VF	E.IV
304	✉	"Fort St. Philip 30th July 1821," ms. heading, Red "New Orleans Aug 5" pmk. & matching "Free" on folded letter to "J.C. Calhoun, Secretary of War. Washington City.", request from a Lieutenant "to be transferred" from a "most disagreeable out post", Fine & Very Scarce	E.VI
305	✉	"Fort St. Philip La 30th Augt. 1824," ms. heading, "New OrL. L. Sep 10" pmk., matching "Free" & ms. "On Public Service" on folded letter to Wash., D.C., tiny nick at T., still VF	E.VI
306	✉	Fort Scott (Kas.), Fort Atkinson Wis. , Mostly Clear pmks. tie 3c Rose (65) on Diff. covers, also incl. No. U10 with ms. "Fort Decatur Ala" pmk., VG-F Lot	E.III
307	✉	Fort Smith Ark. May 23 , Light pmk., ms. "10" crossed out on 1851 folded letter to Wash., D.C.	E.IV
308	✉	Fort Smith Ark. Apr 23 , Mostly Clear pmk., ms. "10" crossed out on 1851 folded letter to Wash., D.C., ms. docketing at B.R., Fine	E.IV
309	✉	Ft. Wilkinson/3 May 1805 (Ga.) , ms. pmk., matching "Free" on folded cover to Wash., D.C., docketed "Creek Agency Apl 20, 1805", slightly brittle, still VF, Marvelous & Rare Cover (Ft. Wilkinson in existence only from 1797-1806)(Photo)	E.IX
310	✉	Fort Winnebago Wis. T., Apr 27 , Clear Brownish pmk., Statehood Usage, Small Unframed Square Grids Tie 3c Red (11), Margins All Around incl. R. Pane Margin, on cover to N.Y., VF & Handsome	E.V

CALIFORNIA COVERS

311	✉	Benicia Cal Oct 22 , Clear pmk., matching Rosette ties 3c Rose (65) on Hand-Colored Four-Horse Stagecoach cover, Impt. below crossed out, slightly reduced at L. just into stagecoach design, o/w Fine, Scarce(PPhoto)	E.XIII
312	✉	Cold Spring Cal./Oct. 25 , Bold ms. pmk., matching "10" on 1852 folded cover to Ill., Forwarded to St. Louis with Red "Belleville Ill." pmk., ms. "forward. 5" & total "15", VF	E.V
313	✉	Columbia Cal , Bold pmk. ties 10c Green, Ty. II (14) , Ample to large Margins, tiny corner margin crease, on cover to N.Y. State, minor cover wear, without flap, Scarce & Attractive(Photo)	175.00
314	✉	Columbia Cal. Feb 3 1858 , Bold pmk. ties Well-Centered 10c Green, Ty. III (33) on Cover to Vt., small internal cover tear, cover stain at B., VF Stamp & Postmark	85.00
315	✉	Culloma Cal. Jul 2 , Blue Forwarding pmk. on 1852 folded letter, Red "Belleville Ill" pmk. & matching "10", ms. "Ford 5" & total "15" below, Fine	E.V
316	✉	Culloma Cal. Feb 8 , Blue pmk., matching Rimless Grids on Horiz. Pair 3c Red 11), Margins to cut in, tears not tied on 1853 folded letter to Ill., Forwarded with Red "Bellville Ill." pmk. & ms. "forward. 5", Scarce Cover	E.V

317	☒	Fort Jones Cal Oct 31 , Almost Cpl. pmk., 3c Rose (65), Ms. cancel, not tied, on cover to Yreka, 1862 docketing, Fine & Scarce	E.III
318	☒	Fort Jones Cal Dec 14 , Bold pmk., matching target on 3c Pink Entire (U59) to Yreka, docketed 1868, minor water stain at T., o/w VF, Scarce Town	E.III
319	☒	Galt Cal , Magenta pmk., matching Target on 3c Green (158), not tied, on cover to Mich., Fine & Scarce	E.III
320	☒	Marysville Cal Dec 4 Paid By Stamps , Blue pmk., Matching Large Rectangular Grids tie 1c Blue , ty. IV (9) & Horiz. Strip of three 3c Red (11) , All with Large to Huge Margins, on cover to St. Louis, "Jan 4" handstamp in B.R. cover corner may indicate letter Advertised, cover slightly aged, one 3c creased before use, o/w VF, A Beauty, Illustr. in Ashbrook, Vol. 2, p. 361	E.IX
321	☒	Rattlesnake Cal , Clear Double Line pmk., ms. "March 23 1863" date, Circle of Wedges on 10c Yellow Green Entire (U41) to Maine, slightly reduced at L., o/w Fine, Scarce	E.V
322	☒	Red Bluff Cal. , Bold pmk., Four Wide Bars tie 3c Ultramarine (114) on cover to N.Y. State, two "miners" Letters enclosed, VF	E.III
323	☒	Sacramento Cal 40 , partly clear pmks. on two 1850 folded letters to Ky., one headed "Rough and Ready", one cover stained, Scarce	E.III
324	☒	Sacramento Cal , Clear pmk., Bold Shield cancel on 3c Rose (65), small tear, not tied on 1866 cover, small cover tear at T.R., VF Strike	E.IV
325	☒	Sacramento City Cal. , Mostly Clear Brownish Red pmk., Bold matching Large "40" on folded cover to N.Y. State, VF	E.VI
326	☒	Sacramento City Cal. , Red pmk., ms. "Free JWG" on 1851 folded letter from S.F., Bold pmk., matching "Paid" & Outline "3", ms. "S.A. McMeans/Assembly" on folded cover to Coloma, minor aging, o/w Fine	E.III
327	☒	San Francisco Cal. Sep 1 , Clear pmk., ms. "40" on 1849 folded letter to Ill., headed "Sacramento City," Interesting Contents, minor bleaching, o/w Fine	E.VIII
328	☒	San Francisco 40 , Red pmk., two overlapping strikes on folded letter to Ind., headed "Freemont (California) April 8.1850", long closed tear, minor aging, Scarce Postmark	E.III
329	☒	San Francisco Cal. 7 Apr , Clear Orange pmk, matching medium "12½" rate on 1851 folded letter to Sacramento City, VF & Scarce	E.VII
330	☒	San Francisco Cal Jan 31 1864 , Double Circle receiving pmk. on folded letter from Chile , faint "Valparaiso" backstamp, Red "Paid To/Panama", British "Panama" Transit, Bold "10", Red British "1/-" Rate, VF	E.V
331	☒	San Francisco Cal. 21 Aug , Bold pmk., matching "1" on 1852 local partly printed Tax Assessment Circular, couple negligible cover stain spots, o/w VF, Scarce Rate	E.V
332	☒	San Francisco Cal 18 Jan , Clear pmk. ties Horiz. Pair 3c Orange Brown (10) , Pos. 77-78L5e, Ample to Large Margins except just in at T.R. corner, R. stamp tiny tear at T., on cover to Ohio, Attractive	E.V
333	☒	San Jose Cal. Nov 30 , Red pmk., matching "Paid" & ms. "3" on 1851 folded letter to Bedford, Ind., Bold "10" struck over "Paid", Forwarded to Indianapolis with "Bedford Ind." pmk., ms. "Jan 14" date, matching "Forwarded", "5" & total "15", slight cover wear, o/w Fine	E.III
334	☒	Shasta Cal , Light pmk. ties 10c Green, Ty. III (15) , Clear to Large Margins, light bend, on 1857 cover to N.Y.C., Fine	160.00
335	☒	Sonoma Cal. , Perfect Bold Blue pmk., matching small Quartered Cork on 3c pink Entire (U34) to Santa Rosa, slightly reduced at L, light toning, Extremely Fine Strike	E.III
336	☒	Susanville, * Lassen Co., Cal. Jun 15 1882 , Duplex pmk. with Kicking Mule cancel on 3c Green Entire (U163), bit irregular at R., VF Strike	E.III
337	☒	Vallejo Cal , Clear Blue pmk., Matching Geometric ties 3c Ultramarine (114), minor faults, on cover to Phila., Attractive	E.II

- 338 ☒ **Weaverville Cal/12th May**, ms. pmk., ms. "Paid 3" on folded cover to San Francisco, stated to be 1852, VF **E.IV**
- 339 ☒ **"Weaver Creek Trinity County/June 7th 1852"**, ms. heading on folded letter to S.F., ms. Weaverville, Cal. pmk. & matching "Paid 3", minor soiling, o/w VF, Scarce **E.IV**
- 340 ☒ **Yankee Jims Cal**, Bold pmk., matching "Paid" & "10" on cover to Maine, some light toning, VF Strike(Photo) **E.VI**

WESTERN EXPRESS COVERS

- 341 ☒ **Adams & Cos. * Express * Mormon Island**, Bold Double Line Oval, "Boston 8 Jun 10Cts" pmk. on cover to San Francisco, thence to "Mur Bar/1.00", cover bit aged, VF Strike, Rare Marking(Photo) **E.VII**
- 342 ☒ **Adams & Co. Sacramento Apr 28**, Large Blue Double Circle Co. pmk., matching "Paid" in Oval on 1854 folded letter from Santa Barbara to San Francisco, VF **E.V**
- 343 ☒ **Adams & Co. Sonora. May 15.**, Bold Red Oval, matching Boxed "Paid" on 1853 folded letter to S.F., ms. "p Adams & Co's Express/15th May 1853" partly under pmk., ms. "Paid" under handstamped "Paid", VF & Attractive **E.VI**
- 344 ☒ **Bamber & Cos. Express SF Mar 28**, Bold Blue Double Circle, Blue Oval "Wells. Fargo & Co. San Francisco" cancels 3c Pink Entire (U59) with Printed Bamber & Co. Oakland Frank in rounded scroll, addressed to Virginia City Nevada, Fine, Nice Combination **E.IV**
- 345 ☒ **The Cent(ral Overland California (& Pikes Peak Express Company St. Joseph, Mo. Sep 12**, Oval pmk. struck partly off cover, matching "10" on 3c Pink Entire (U34), light "Springfield Ms" pmk., addressed to "Central City. Rocky Mountains," ms. "Care of Hinkley & Co's Express St. Joe. Mo." cover bit worn & slightly reduced at R., Rare(Photo) **E.X**
- 346 ☒ **Freeman & Co. Stockton.**, Bold Blue Co. Oval on 3c Red Entire (U10) with Red Freeman & Co. Printed Frank with dealers corner card, to S.F., VF, Handsome **E.III**
- 347 ☒ **Paid/Greenhood & Newbauer/Northern Express**, Printed Frank on 3c Pink Entire (U58) to S.F., "Weaverville Cal." pmk., VF **E.IV**
- 348 ☒ **Gregory's/Express Office./San Francisco**, Clear Blue marking, matching "Not Paid" in Oval on Blue cover to Sacramento, cover refolded to improve appearance, VF, Handsome & Scarce(Photo) **E.VIII**
- 349 ☒ **Gregory's/Express Office/San Francisco**, Light Blue Handstamp, matching "Not Paid" in oval, ms. "25" on 1853 folded cover to "Honolulu", ms. "by Gregory's Express.," some cover erosion from acid ink in address, o/w Fine, Rare Western Express Cover **E.VIII**
- 350 ☒ **p Gregory's Express**, ms. endorsement, Red "Paid" in Double Oval on folded letter to S.F., ms. heading "Glasgow (Scotland) 17th September 1852", also ms. "Recd p Gregory's Ex./p Str "Independence"/on 11th Novr 1852", Fine & Quite Scarce **E.VII**
- 351 ☒ **Hinkley & Co's Express, Denver City. Sep 13 1860**, Clear pmk. on 3c Red Entire (U9), Grayish Black Grid cancel & matching "Saint Joseph Mo. Sep 20 1860" pmk. to Minn., Hinkley Printed Frank in Scroll, small mend at T., o/w Fine, Very Scarce(Photo) **E.XII**

352 ☒ **Hinckley & Co's Express, Denver City. Dec 31 1860**, Mostly Clear Company pmk. on 3c Red Entire (U10) with Black Hinckley's Printed Frank in Scroll, Green "Saint Joseph Mo. Jan 9" pmk. to Mass., VF & Rare Cover(Photo) **E.XIII**
- 353 ☒ **From/Noisy Carrier's./MAIL./77 Long Wharf S.F. Cal.**, Bold Green Box, ms. "via Nicaragua" on 6c Green Entire (U14), "New-York Ship" pmk., slight wear, VF Strike, Rare Marking(Photo) **E.X**

354	⊗	Overland Mail, Via Los Angeles , Pictorial Corner Card showing Locomotive, Tender & Three Cars , "Hossack & Crawford, News Depot, Sacramento." Impt. below, 3c Red (26), some perfs. trimmed, tied by partial Sacramento pmk. on cover to Alabama, Forwarded to Memphis, all ms. writing & marks on cover appear strengthened, o/w Fine, Rare(Photo)	E.XI
355	⊗	Per Overland Mail, Via Los Angeles , Illustr. Four-horse Stagecoach, "J.E. Damon" Impt. below on cover to N.Y., "New-York Apr 28 1860" pmk., used as paste-up with extensively repaired 10c Pale Green W.F. & Co. Frank Entire (U17a) on back, same pmk., Stagecoach cover VF, Very Scarce & Unusual(Photo)	E.IX
356	⊗	Overland Mail & Express Co. , Large Illustr. Corner Card Showing Six-Horse Stagecoach, "Villa Grove Cal." pmk., matching Target cancels on 1c-3c Bank Notes (182-184), defective, 2c tied, 1888 letter on Printed Letterhead accompanies, some slight cover aging & mends, trifle irregular at L., still Attractive & Quite Scarce(Photo)	E.IX
357	⊗	Pacific Express Paid , Printed "Horseman" frank on 3c Red Entire (U10) to Sacramento, indistinct 1856 pencil pmk., minor tape stain specks, o/w Fine	E.III
358	⊗	Pacific Express Co. Yankee Jims , Partly Clear Red Double line Oval, matching "Paid" on 1856 folded letter to Sacramento, Rare Town	E.V
359	⊗	Paid Pacific Union Express Co. , Red Scroll Frank, Large Blue "Pacific Union Ex. Co ★ San Francisco ★" pmk. on 3c Pink Entire (U59) to Sacramento, bit faded, reduced at L., o/w Fine	E.II
360	⊗	River Express Co., Stockton, Cal. , Five covers, two with Green Printed Frank on 2c Green Entires (U311), Blue & Magenta Company pmks., two with Large Printed Ads Front & Back (Diff. Types), 2c Carmine (220, 267), repaired, tied by Sacramento pmks., also stampless cover Printed Ad on front, Large Illustr. of Horse-drawn Freight wagon on back, Magenta Company pmks. front & back, bit reduced at R., Scarce & Very Interesting Lot	E.IX
361	⊗	Via Nicaragua/Ahead of the Mails , Light Red Boxed marking, Horiz. Pair 3c Red (11), Margins to cut in, tied by "New-York Ship Jan 2" pmk. on 1853 letter from S.F. to Conn., Very Scarce Marking(Photo)	E.VIII
362	⊗	Via Nicaragua/Ahead of the Mails , Faint Red Box, ms. "Via Nicaragua," Horiz. Pair of 3c Red (11) tied by "New-York Ship" on cover to Vt., very worn & aged, Scarce Marking	E.VI
363	⊗	Stmr. Sierra Nevada/Via Nicaragua/Advance of the Mails , Mostly Clear Blue Oval, "New-York Ship" ties Horiz. Pair 3c Red (11), Margins All Around, on cover to Pa., Fine & Rare(Photo)	E.XII
364	⊗	Wells, Fargo & Co. Bodie, Cal. , Violet Blue Oval pmk. on 3c Green W.F. & Co. Entire (U163) to S.F., Fine	E.III
365	⊗	Wells, Fargo & Co/Express/Chinese Camp , Oval pmk. on fresh 3c Red W. F. & Co. Entire (U10) to S.F., Fine & Scarce	E.IV
366	⊗	Wells, Fargo & Co., Gold Hill N.T. Sep 5 , Blue Oval pmk. on fresh 3c Pink W.F. & Co. Entire (U59) to S.F., without flap, Fine & Scarce ..	E.III
367	⊗	Wells, Fargo & Co. Hamilton Nev , Partly Clear Blue Oval, ("Hamilton Nev" Very Clear) on 3c Pink, W.F. & Co. Frank Entire (U59) to S.F., Scarce	E.III
368	⊗	Wells Fargo & Co. Express Los Angeles , Blue Oval pmk. on 3c Red W.F. & Co. Frank Entire (U10) to S.F., pmk. struck partly off T. of cover, without flap, Fine	E.III
369	⊗	Wells, Fargo & Co. Mazatlan Mex. , Light Blue Oval, matching "Paid" in Oval on 10c Brown W.F. & Co. Ty. E. Frank Entire (U91), Unaddressed Paste-up, cancelled by Blue Oval "Wells, Fargo & Co. Mexican Route.", VF	E.III

- 370 ☒ **Wells, Fargo & Co/Express/Santa Clara**, Blurry Brown Oval on 3c Red W.F. & Co. Frank Entire (U9), Unaddressed Paste-up, couple wrinkles, Fine **E.III**
- 371 ☒ **Wells, Fargo & Co. Suisun.**, Light Blue Oval pmk. on 3c Pink W.F. & Co. Frank Entire (U59), Printed Address to S.F., pencil docketing 1869, trifle reduced at R., o/w VF **E.II**
- 372 ☒ **"Dun Glen Nevada/July 27th 1866"**, ms. heading on letter to N.Y. in 3c Pink Wells, Fargo & Co Frank Entire (U59), "Boyd's Dispatch 39 Fulton St. Aug 28 1866" handstamp & "Paid", Fine & Very Unusual **E.IV**
- 373 ☒ **Post Office. Victoria V.I.**, Blue Oval handstamp with Coat of Arms in Center on uncanceled 3c Pink Wells, Fargo Frank Entire (U34) to San Francisco, ms. "WJB(?)/pd 41", Fine & Very Scarce Combination **E.VIII**
- 374 ☒ **"per Str. 'Sierra Nevada' to San Juan/thence Via N. York/p. Wills Fargo & Cos Ex/to be posted in N. York,"** ms. endorsement on 1853 cover to Scotland, "New 10 York" transit, Liverpool transit & Red "Glasgow" rec'g pmks. on back, "2/" rate, scarce Nicaragua usage, couple cover faults, Very Scarce **E.VI**

- | | | |
|-----|--|---------------|
| 375 | Wells, Fargo & Co. 25c Blue (143L8). Margins to: barely touched, couple small toned spots, tied by Blue "Wells, Fargo & Co. Virginia Cty. N.T. Jul 24" Oval on 3c Pink W.F. & Co. Frank, Front Only (U35) to S.F., somewhat worn, reduced & rebaked, Still Attractive & Rare (Cat. \$2,500.00 on Cpl. U35 Entire) | E.XIII |
|-----|--|---------------|

- 376 ☒ **Paid Whiting & Co's. Feather River Express**, Scroll-type Frank on Uncanceled 3c Pink Entire (U58) to S.F., minor surface disturbances from attempt to remove ink stains, o/w Fine, Scarce **E.V**

DOMESTIC FORWARDERS

- 377 ☒ **Forwarded By The /American Letter Mail/Company/Office/56 Wall St., N.Y.**, Red Oval, matching "Paid" on 1845 folded letter from Phila. to N.Y., Fine **E.III**
- 378 ☒ **Wm Bryan * New Orleans * Agent of the Texian Post Office**, Partly Clear Oval on back of folded cover to "Houston Texas", Red "Montgy Al." & "Paid", ms. "18¾" & "Ship 31", Rare Marking **E.VIII**
- 379 ☒ **Wm Bryan/New Orleans/Agent of the Texian Post Office Dt.**, Partly Clear backstamp on folded cover to Galveston, Red "Salisbury N.C." pmk., matching "Paid" & ms. "25", also "Ship", tape stain affects backstamp, Scarce **E.VII**
- 380 ☒ **Wm. Bryan/New Orleans/Agent of the Texian Post Office Dt.**, Partly Clear oval on back of folded cover to Houston, Brownish Red "Greensboro Ala" pmk. & matching "Paid", ms. rate, quite aged & worn, Scarce Marking **E.V**
- 381 ☒ **Forwarded by/Currier's/Gloucester and Boston/Express./Office-27 Front Street./Gloucester/5 Congress Sq., Boston**, Orange Label affixed on cover to Townsend, Mass., Fine & Scarce **E.III**
- 382 ☒ **Forwarded by/Currier's/ . . . /Express**, Green Label (same wording as previous cover) affixed on cover to Townsend, Mass., Fine & Scarce **E.III**
- 383 ☒ **Forwarded By Hale & Co May 3 Boston**, Red Oval pmk., Matching "Collect/Six Cents" in Fancy Box on Fresh 1845 folded letter to N.Y., VF **E.II**
- 384 ☒ **Forwarded/By/Hale & Co./From/Northampton.**, Perfect Bold Red Oval on 1844 Folded Letter to Boston, light strike of Boxed "Collect 6 Cents for Boston Office", ms. "8cts" Rate, small tear & piece out of cover T. center, o/w VF, also incl. similar cover with light strike of "From Providence" Oval & matching "6", Fine **E.V**

- 385 ❧ **Forwarded By/Prine & Co./New-York.**, Bold Red Oval on back of 1856 folded letter, 3c Red (11), Margins Nearly All Around, tied by "New-York" pmk. to Ill., VF Marking E.V

TRANS-ATLANTIC FORWARDERS

- 386 ❧ **Forwarded Through Gilpin's Exchange**, Five-line Red Oval on back of 1841 folded letter from N.Y. to Switzerland, ms. Rate, French Transit, "Lausanne" backstamp, Fine E.III
- 387 ❧ **Gregory's Atlantic and Pacific/Express/Forwarded by Thompson & Hickock/149 Pearl St., N.Y.**, Partly Clear handstamp, ms. "p Gregory's California Express" on folded letter to S.F., headed "Glasgow 29 August 1851", ms. "Recd pr Gregorys Express pr Pacific Octr 17/51", Fine & Rare E.VI
- 388 ❧ **Forwarded From/Harnden s/Package Express & Foreign/Letter Office/No. 8 Court St. Boston**, Clear Red Oval on Immaculate Dec. 1844 Folded Letter to London, ms. "pr Britannia Dec 1." & 1sh Rate Mark, VF, Choice E.V
- 389 ❧ **A Similar Lot**, Mostly Clear Strike on Dec. 1844 Printed Shipping & Commercial List, Fine E.V
- 390 ❧ **A Similar Lot**, Two Folded Letters, mostly readable strikes, 1843 & 1844 usages, 1sh & 2sh notes, both "pr Hibernia", filing crease through one oval, Scarce Lot E.VI
- 391 ❧ **A Similar Lot**, Two Folded Covers, mostly clear strikes, 1842 & 1845 usages, both "pr. Calidonia", filing creases through ovals, o/w Fine Lot E.VI
- 392 ❧ **Wm Lobach & Schepeler New York**, Bold Red Oval **Forwarder's** marking on 1852 folded cover to **Tampico**, Large Bold "1" Mexican Due Mark, VF E.III
- 393 ❧ **Panama/13 Mr 1873/Transit**, Clear marking on cover to U.S. with **Peru 1868 1d Green (14)**, nick at R., Large "12" debit & "New 24 York" pmk., Scarce E.IV

RAILROADS, WATERWAYS & EASTERN EXPRESS

- 394 ❧ **Money Package/Forwarded by/American Express/Company/From/Cincinnati**, Orange Label, quite miscut, on cover from Tenn. to Ohio, ms. "\$30.00", back has Five Red Wax Seals impressed with "The Adams Express Company Chattanooga, Tenn.", Fine & Unusual E.III
- 395 ❧ **Paid./F. Dentzel/Agt. P.O./N.O.**, Light Red Oval on 1851 folded letter from Bayou Sara to New Orleans, small hole far from pmk., o/w Fine, Very Scarce E.IV
- 396 ❧ **Gay, Kinsley & Co's . . . Express**, Large Ten-Line Company Label, Boat & Train Illustr. in center, on large piece from Phila., 1849 usage, VF & Scarce, ex-Knapp E.IV
- 397 ❧ **Mail Route**, Clear Red Arc, ms "37½" rate on Jan. 1829 folded letter from N.O. to N.Y., Fine & Scarce E.III
- 398 ❧ **Mail Route**, Bold Red Arc, matching "New-York Jul 18" pmk. & magenta ms. "18½" on 1829 folded letter from New Orleans to Petersburg, Va., cover toned at B., VF Strike E.III
- 399 ❧ **Marseille C. & R.I.R.R.** (Chicago & Rock Island R.R., Towle-Meyer 702-S-2), Mostly Clear Fancy Boxed pmk. ties 3c Red (65) on cover to Miss., Fine & Scarce E.V
- 400 ❧ **Norwich & Worcester R.R.**, Neat Red pmk. (Remele N23), matching "5" on 1848 Folded Cover, Fine E.II

401	☒	Prov & Stonington R.R. , Two Mostly Clear Strikes (Remele P15), one ties 3c Red (11) , Huge Margins to in at T. on Fresh Dec. 1854 Folded Letter, Fine Cover	E.III
402	☒	Southern Express Company./Cashier's Office, W.D., Memphis, August 10, 1869 , 4x3¼" Orange "Unclaimed Package" Label affixed on back of 3c Pink Entire (U59) addressed to Chattanooga, slight wear & corner nick, Interesting	E.III
403	☒	Steam-Boat./18¾ , Bold Red Str. Line on July 1836 folded letter to Boston, VF	E.III
404	☒	Steam-Boat , Bold Blue Buffalo, N.Y. Fancy Scroll, ms. "18¾" on folded cover, Fine	E.IV
405	☒	Steam Boat , Three Diff. Red Str. Line markings, ms. Rates on folded covers, one with matching "Providence R.I." pmks., F-VF Lot	E.III
406	☒	Wells & Co's. Buffalo, Albany & New York Express , Illustr. Orange Label on 1848 folded letter from Buffalo to N.Y., minor soiling, o/w Fine	E.IV

INDEPENDENT MAIL SERVICE

407	☒	American Letter Mail Company/Office/No.12 State Street/Boston , Red Oval, ms. "6" Rate on Folded Cover, Fine	E.IV
408	☒	American Letter Mail Company./Office/No.16 State Street/Boston. , Red Oval, ms. "6" on 1845 folded letter from Newark, N.J. to Boston, Fine	E.IV
409	☒	Carpenter & Co/Kennebec Express/Rail Road Exchange/Court Square/Boston , Almost Cpl. Oval on cover to a Ship Captain "Boston or Roxberry Mass", ms. note attached to back "The Schooner hails from Richmond. C & Co." & "Not in Boston—cannot find" below, Fine & Very Scarce, Unlisted	E.V
410	☒	City Despatch Post N.Y. , Clear Red pmk. on May 1842 folded letter, lightly toned at R., o/w Fine	E.V
411	☒	City Despatch Post N.Y. , Mostly Clear Red pmk. on June 1842 folded letter, Fine	E.V
412	☒	City Mail Co/Office/6 Wall Street , Clear Red Box, ms. "2" on 1845 folded letter from Boston to N.Y., Fine & Scarce(Photo)	E.VII
413	☒	Dunhams/Union-Square/Post-Office. , Clear Red oval, matching "Not Paid" in circle on small envelope, light soiling, minor sealing-wax stain in address, o/w Fine, Scarce	E.IV
414	☒	"EAGLE"/City Despatch Post/85 Chestnut St. , Clear Red Circle with Eagle in Center, matching "3" on 1845 folded letter, Fine & Scarce(Photo)	E.VII
415	☒	Collect/12½ Cents/for/Boston Office , Hale & Co. Fancy Box, "12½" in ms. over "6", "12½" repeated on folded cover to N.Y., VF & Scarce	E.III
416	☒	Hanford's Pony Express Post 2 Cts , Light Orange Oval handstamp "Horseman" pmk. on folded cover Fine & Scarce	E.VII
417	☒	Hartford Penny Post 2 CTs . Clear Double Oval on Small Cover to Hartford. (Red & Blue Patriotic Edges on Back Flaps), 3c Red (26) tied by Target "Broad Brook Ct" pmk. of Origin, Forwarded to Springfield, Mass., "Hartford Ct Nov 11 1861" Double Circle, Str. Line "Not Found" (ms. deleted), cover bit reduced at L., address slightly blurred, o/w VF, Possibly Unique(Photo)	E.XII
418	☒	N.O. U.S. City Post Jan 12 8 A.M. , light Green New Orleans "Snow Shovel", Red "New Orleans La 5" pmk. on 1853 cover to Ind., "Cannelton Ind. Jan 30" pmk. & matching 5, Fine, Scarce Marking on Outgoing Mail(Photo)	E.VII
419	☒	New-York Penny Post May 18 , light pmk. on 1841 folded letter from Troy to N.Y., Fine & Scarce(Photo)	E.VII

420	✉	Swarts' Chatham Square B Post Office N.Y., Bold Red Oval, Str. Line "Paid" on cover, trifle aged, VF Strike	E.III
421	✉	U.S. City Despatch Post, Red pmk. on Oct. 1842 folded letter from Troy to N.Y., light Blue Oval "Forwarded From Howards Hotel New York", ink in address bit smeared, Fine, Scarce	E.IV
422	✉	U.S. City Despatch Post, Red pmk. on Nov. 1842 folded letter from Newark to N.Y., Fine	E.IV
423	✉	U.S. City Despatch Post, Red pmk. on March 1846 folded letter from Troy to N.Y., Fine	E.IV

CARRIERS AND LOCALS

424	✉	1c Franklin Carrier (LO1). Ample to Large Margins, Odd Red Grid cancel, faulty (as virtually all are), Fine Appearance, Very Acceptable Example of this Rare Stamp(Photo)	1,350.00
425	★田	1c Eagle Carrier (LO2). Horiz. Block of Fifteen, with Part R. Margin, Ample to Large Margins incl. Virtually Cpl. Dividing Lines at R. & B., Fresh, o.g., also incl. 1848 Newark, Ohio Bank Check printed by R.W.H.&E. with Large Eagle vignette used as model for the Eagle Carrier design, VF Lot	217.50+
426	✉	1c Eagle Carrier (LO2). Large Margins All Around Showing Nearly Full Dividing Lines, Used with 3c Red (11), Margins Virtually All Around (tiny corner crease), both tied by Philadelphia Pa." pmks. on cover, VF(Photo)	100.00
427	✉	1c Eagle Carrier (LO2). Ample to Large Margins, light Red Star cancel, not tied (as usual), with 3c Red (11), Margins nearly All Around, tied by Blue "Philadelphia Pa." pmk. on cover to N.J., without flap, VF	E.V
428	✉	1c Eagle Carrier (LO2). Large Margins, Red Star cancel, not tied as usual, 3c Red (11), Margins All Around, tiny scissors cut, tied by "Philadelphia Pa." pmk. on cover to N.J., few age spots, o/w VF	E.IV
429	✉	1c Eagle Carrier (LO2). Ample to Large Margins, Red Star cancel, Not tied as usual, on local Phila. cover, VF	60.00
430	✉	Baltimore, Md. City Despatch, 1c Black (1LB8). Ample to Large Margins except slightly in at T.L., couple minor toned specks, tied by usual pencil cancel on local cover, Fine	150.00
431	✉	Baltimore, Md. City Despatch, 1c Black (1LB8). Margins Virtually All Around, usual pencil cancel, not tied as often, Blue Baltimore Md Jun 19 1860 pmk. on cover to Wash., D.C., "Pension Office Jan 20 1860" rec'g. pmk., ms. "Additional Evidence", Fine & Unusual	150.00
432	✉	U.S. Mail, 1c Yellow (6LB10). Margins All Around, tied by pencil cancel, partly clear Red "New-York 5 cts." pmk. & "Paid" in arc on envelope, Fine	125.00
433	✉	U.S. Mail, 1c Buff (6LB11). Margins All Around, usual pencil cancel, not tied as often, Red "New York 5 cts." pmk. on 1850 folded cover to Mass., VF	E.IV
434	✉	Blood's Penny Post, (1c) Black (15L18). Margins Virtually All Around, Grid cancel, not tied, "Blood's" pmk., 3c Red (26) tied by "Philadelphia Pa. Apr 23 1860" pmk. on cover to Boston, Fine	50.00
435	✉	Blood's Dispatch, Red on White Entire (15LU5). "Blood's Despatch" 1855 pmk., VF	40.00
436	✉	Boyd's City Express, 2c Green, Ty. IV (20L4). Large to Huge Margins, cancelled, not tied, Red Boyd's pmk. & matching "PAID/J.T.B." on folded letter, minor cover soiling, o/w VF	40.00
437	✉	Boyd's City Express, 2c Green, Ty. VI (20L8). Large Margins, tied by "PAID/J.T.B.", blurry Boyd's pmk. on 1854 folded letter, VF	30.00

438	✉	Boyd's City Express, 1c Green, Ty. IX (20L15). Margins Virtually All around, tied by "PAID/J.T.B.", Oval "Boyd's City Express Post." pmk. on cover, Fine	75.00
439	✉	Boyd's City Express Post, 1c Blue Gray (20L18). Large Margins, used with 3c Rose (65), tied together & onto small cover by "New-York" pmk. & Target, 1c also tied by "Paid" in oval, minor cover toning, o/w VF	E.III
440	✉	Hale & Co., (6c) Light Blue, Blue (75L1, 75L5). Former Huge Margins to barely touched, wrinkles, "13 Court St. Boston" obliterated in ms., on 1844 folded letter from New Haven to Phila.; latter Ample to Large Margins, "Boston" obliterated by ms. "NY" on 1844 folded cover from Boston to N.Y., F-VF, Scarce Lot	60.00
441	✉	Hartford Conn., Mail Route, (5c) Yellow (80L1). Margins to slightly in, small corner crease, ms. "Hartford" cancel, "tied" by Sealing wax on Sept. 1844 Folded Letter to NY City, ms. "Paid", contents refer to wheat order to be sent "by first propeller", Rare, unpriced on Cover (used stamp cat. \$100.00)	(Photo) E.XI
442		Hartford, Conn. Mail Route (1c) Pink (80L3). Small Margins to slightly in, minor faults, ms. "Hartford" cancel, Fine Appearance, Very Scarce	300.00+
443	✉	Husseys Post, Red Lilac (87L44), Large Margins, tied on fresh cover by partly clear Hussey's pmk., Extremely Fine	40.00
444	✉	One Cent Despatch, Washington City, 1c Violet (112L1). Margins All Around, small corner margin tear, neatly tied by "City Despatch" 1856 pmk. on cover to Phil., U.S. Postage paid by 3c Red (11), Margins to cut in at T.L., tied by Washington, D.C. pmk., aging & light staining affect stamps & cover, Very Scarce	(Photo) 400.00
445	✉	One Cent Despatch, Washington City, 1c Violet (112L1). Large Margins, small gum stain at B., tied by light "City Despatch" pmk. & ms. docketing, pmk. repeated below, U.S. Postage paid by 10c Green, Ty. III (15) , Margins to cut in & minor faults, tied by "Washington D.C." pmk. on 1856 cover to Los Angeles, Cal., Attractive & Quite Scarce Usage	(Photo) 400.00+
446	✉	Wells, Fargo & Co, 25c Red Entire (143LU3), Unused on U.S. 3c Pink Entire (U34), couple negligibly rounded corners, still VF	(Photo) 250.00
447	✉	Westtown, Pa., (2c) Gold (145L2). Large Margins, uncanceled as usual, on flap of 3c Pink Entire (U59), Circle of Wedges cancel & "Street Road Pa." pmk., Fine & Scarce	125.00

VALENTINE COVERS

448	✉	Boston 5cts, Red pmk., matching "Paid" on Valentine cover, Beautiful Ornate Gold designs front & back, VF	(Photo) E.VI
449	✉	Brookline Mass. Feb 13, Light Red Double Oval pmks., matching "Paid" & "10" in Oval on Huge (10¼x8½") Valentine , Beautiful Intricate Gold designs front & back, quite minor soiling, o/w VF	E.VI
450	✉	Manchester N.H., faint pmk., Clear "Paid" & "1" in Double Circle on Large (8x5¼") Valentine , Incredibly Ornate Gold Floral designs front & back, some small toned spots & couple small tears, o/w Fine, Very Pretty	E.V
451	✉	PAID, Bold Blue handstamp on large (7½x5¼") Valentine, Beautiful Overall Embossed design, Fine, Very Attractive	E.IV
452	✉	1c Blue, Ty. IV (9). Recut Once at T., Twice at B., Margins All Around, minor flaws, Boldly tied by "New Haven Con. Feb 16 1857" pmk. on Elaborate Embossed Valentine Cover, some wear & filing crease, o/w Fine	E.VI
453	✉	3c Red (11). Margins Nearly All Around, ms. cancel, not tied, Red "New Sharon Me. Feb 15" pmk. on 7½x5" Valentine Cover , Pale Green with Intricate Overall Pattern in Gold, cover opened three sides, couple light stains & some wear around edges, still Very Pretty, with Original Valentine	E.IV

454	2c Black (73). Affixed across back flaps of large size Embossed Valentine Cover, tied by Cork, "Lewiston Me Feb 14" pmk., bit reduced at L., couple cover tears, o/w Fine	E.IV
455	1c Ultramarine (156, 182). Tied on Large (7½x5") Embossed Valentines tied by Blue, Magenta "East Bridgewater, Mass." pmks., Feb 20, 1878 & Feb 17, 1879, F-VF & Handsome	E.IV
456	Valentine Covers, ca. 1875, Six Embossed Envelopes with Original Valentines, Franked with 1c & 3c Bank Note Stamps, also incl. two Valentines without covers, Fine Lot	E.VII

1847 ISSUE

457	5c Brown (1). Two Huge Margins, clear to just in other sides, tied by light Magenta Grid, faint matching "Hartford Ct. 5" pmk. & clear "Paid" with Pointing Hand on 1849 folded letter, Scarce & Attractive (Photo) 325.00+
458	5c Red Brown, Double Transfer Ty. B (1 var.). Pos. 90R1, Clear to Huge Margins, tied by Attractive Blue "Syracuse, N.Y. 5" pmk. on Sept. 1850 folded letter, Handsome Illustr. "Syracuse & Utica Rail Road Co." letterhead, stamp has light negligible filing bend, letter slight soiling on back, o/w VF, Scarce(Photo) 375.00+

459	10c Black (2). Large Margins All Around, tied by Red Grid & matching "Cincinnati, O., 10" pmk. on Jan. 29, 1848 folded letter to Philadelphia, vert. filing folds in cover, VF(Photo) 825.00+
-----	---

1851 ISSUE

460	1c Dark Carmine Franklin Die Essays on Proof Paper (Brazers 55E-Aa, 55E-Ah). Full Dies, VF, also incl. \$10.00 Canal Bank New Orleans Bank Note engr. by Toppan, Carpenter & Co. with Vignettes of Franklin & Washington as on 1c & 3c 1851-57 Issue, Crisp Unc.	E.VI
-----	---	------

461	1c Blue, Ty. 1b (5A). Pos. 6R1E, One of the Two Best Examples of the type, Clear to Large Margins Virtually All Around incl. Part T. Sheet Margin, Large "Paid" in Grid & Red Boston pmk., faint ironed out crease, Fine appearing Example of this Rare Stamp(Photo) 1,000.00
462	1c Blue, Ty. 1c (6 var). Curl on Shoulder, Pos. 81R4, Ample to Huge Margins incl. L. Pane Margin, Rich Color, Blue Rimless Grid cancel, partly erased ms. line, o/w Extremely Fine Example of this Scarce Sub-type of Ty. 1a, Plated & Signed Ashbrook(Photo) E.XII

463	1c Blue, Ty. II (7). Ample to Large Margins Three Sides incl. Part B. Sheet Margin, Clear to touched at L., Blue Target cancel, Fine & Attractive	47.50
464	1c Blue, Ty. II (7). Large to Huge Margins, shows bits of other Stamps Three Sides, light Town pmk., tiny trivial pinpoint thin speck, Extremely Fine Appearance	47.50
465	1c Blue, Ty. II (7). Three Diff. Shades, Margins nearly All Around, Town pmks., small faults, F-VF Appearance	142.50
466	1c Blue, Ty. II (7) Horiz. Pair, 64-65L2, Large Margins, New Orleans pmks. & trace of Orange Red Transit, VF (Photo)	95.00
467 ☒	1c Blue, Ty. II (7). Margins Virtually All Around, tied by neat ms. “#”, ms. “Sylvania Wis” pmk. on April 1856 Circular, VF	55.00
468 ☒	1c Deep Blue, Ty. II, Plate 3 (7). Margins All Around, Typical Beautiful Deep Rich Plate 3 Color, perfectly tied by Large Paid” in Grid & Red “Boston Mass.” pmk. on Local Cover, VF, A Wonderful Example from this Rare Plate (Photo)	350.00

469	⊗	1c Blue, Ty. II (7). Horiz. Strip of Three , Ample to Large Margins Three Sides, Ample to slightly in at T., L. stamp minor margin toning, ms. cancel, not tied, faint "New Castle, Del." pmk. on cover, Reasonably Attractive	E.V
470		1c Blue, Ty. III (8). Margins Virtually All Around , light Town pmk., VF(Photo)	700.00
471		1c Blue, Ty. IV (9). Large Margins , Rich Color, Town pmk., VF (Photo)	37.50
472		1c Blue, Ty. IV (9). Ample to Large Margins , Town pmk., VF (Photo)	37.50
473		1c Blue, Ty. IV (9). Ample to Large Margins , Light town & Red Transit pmks., VF	37.50
474		1c Blue, Ty. IV (9). Gorgeous Bright Shade , Ample to Huge Margins, light Town pmk., tiny margin scissors cut just touches B.R. plume, still VF & Choice	37.50
475		1c Blue, Ty. IV (9). Large Margins Virtually All Around incl. B. Sheet Margin, Beautiful Rich Color, neat "Mobile" pmk., tiny pinpoint thin speck, VF Appearance	37.50
476		1c Blue, Ty. IV (9). Cracked Plate , Pos. 40R1L, Three Large to Enormous Margins incl. L. Pane Margin & Center Line, 2½mm of Next Stamp at B., Clear to Ample at R., Large "Paid" in Grid cancel, VF(Photo)	90.00
477		1c Blue, Ty. IV (9). Double Transfer , Pos. 20R1L, Three Large to Huge Margins, incl. 12mm R. Sheet Margin, shows bits of Next Stamps at T. & B., Large margin to slightly in at L., light Blue Town pmk., Fine & Very Attractive(Photo)	37.50+
478		1c Blue, Ty. IV (9). Triple Transfer. One Inverted , Pos. 71L1L, Ample to Large Margins, Used, Fine	70.00
479		1c Blue, Ty. IV (9). Triple Transfer, One Inverted , Pos. 91L1L, Ample to Mostly Large Margins incl. Part B. Sheet Margin, marked dry print, Town pmk., Fine	70.00
480		1c Blue, Ty. IV (9). Three Diff. Shades . Margins Virtually All Around, Two with light Town pmks., other lightened ms. cancel, small faults, F-VF Appearance, also incl. 1c Blue, Ty. IV (23), defective	237.50
481	⊗	1c Blue, Ty. IV (9). Recut Twice at T. & Twice at B. , Pos. 79L1L, Large Margins to just touched at T., faint toned area in R. margin, Deep Rich Shade, tied by "Boston Mass Paid" pmk. on 1855 Printed Circular, Fine & Scarce	85.00+
482	⊗	1c Blue, Ty. IV (9). Nice Margins , trivial corner crease, tied by blue "Philadelphia Pa." pmk. on 1853 Circular, Fine	45.00
483	⊗	1c Blue, Ty. IV (9). Margins All Around , tied by light "Hartford Ct." pmk. on Printer & Stationers Advert. Cover, some cover aging, o/w Fine	E.IV
484	⊗	1c Blue, Ty. IV (9). Pos. 87R1L , Three Nice Margins, tiny bit in at L., tied by "New Haven Con." pmk. on Small 1856 Embossed Ladies Cover, Circular Embossed Return Card, ms. notations about stamp identification, slight aging, o/w Fine	E.III
485	⊗	1c Blue, Ty. IV (9). Horiz. Pair , used with 3c Red (11), All with Margins to slightly in, tied by "New Orleans La." pmks. & "13" Decimes due mark on 1856 folded cover to France, N.Y. & French Transits front & back, Fine	E.VI
486	⊗	1c Blue, Ty. IV (9). Horiz. Strip of Three , Pos. 91-93L1L, L. Stamp Triple Transfer, One Inverted , Margins All Around, tied by "Indianapolis Ind." Rimless pmks. on 1856 cover, minor cover mend at T.L., R. pair slight gum stains, Pos. 91 Extremely Fine, Plated & signed by Ashbrook on back, Choice cover(Photo)	E.VIII
487	⊗	1c Blue, Ty. IV (9). Horiz. Strip of Three , L. Pane Center Line Margin, margins to trifle in other sides, Scissors cuts between stamps, another into design, tied by "West Cheshire Ct." Balloon Type pmk. on Cover to New Haven, cover tear, Scarce	E.V

488	⊗	1c Blue, Ty. IV (9). Horiz. Strip of Three , Pos. 92-94L1L, Margins All Around, slight "dry print", couple light creases, tied on Buff Cover by "Hartford Ct." pmks., Attractive	125.00
489	⊗	1c Blue, Ty. IV (9). Vert. Strip of Three , Margins All Around Mostly Huge, tied on 3c Red Entire (U10) by Two Strikes of "Middletown Ct. 3 Paid" pmks., T. stamp tiny Scissors cuts in margins far from design, small closed tear, B. stamp negligible corner margin crease clear of design, o/w Extremely Fine, Unusual Way to Pay Double 3c Rate(Photo)	125.00+
490		3c Orange Brown (10) , Pos. 31L1i, Ample to Large Margins, shows bit of next stamp at T., Deep Rich Shade, Red Town pmk., faint corner bend, VF(Photo)	35.00
491		3c Orange Brown (10). Partial Reconstruction of Plates 1e (24 Diff. Pos.), 1i (23 Diff.), 2e (49 Diff.), O (48, 47 Diff.) & 5e (40, 39 Diff.), Nice Variety of Shades & Cancels (only 15% ms.), Better than usual plating quality, Many with Four Margins, Generally VG-VF Lot (Cat. value does not incl. premiums for shades, Cancels or Plate Varieties) 5,980.00+	
492		3c Orange Brown, Red Shades (10, 11) , A Color Study comprising 15 Stamps (Two No. 10's), nearly all Plated, above average quality, Mostly F-VF	E.VII
493	⊗	3c Orange Brown (10) , Margins to touched, on Cover tied by Red Criss-Crossed Grids, matching "Farmington Ct." pmk., Fine	E.V
494	⊗	3c Orange Brown (10) , Ample to Large Margins, Rich Color, tiny corner crease, tied by Magenta Grid, matching "Hartford Ct." pmk. on July 15, 1851 Folded Letter, Attractive	E.IV
495	⊗	3c Orange Brown (10) , Margins All Around, Large at L., small scuff at T., tied by Grids on fresh Jul. 9 1851 Folded Letter, Second Week of Use, Blue "Baltimore, Md." pmk., Attractive	42.50
496		3c Red (11) , Three, each with Diff. "3" cancel, Large Blue, Medium Green & Two Strikes of Small Black, stamp with Green "3" small tear, o/w Fine, Scarce Lot	E.V
497		3c Red (11) , Nine, Virtually All with Margins All Around, each with Diff. Color Town pmk. incl. Green, Olive, Ultramarine, etc., few tiny faults, Mostly F-VF, Choice Lot	E.V
498		3c Red (11). Partial Reconstruction of Plates 1L (99 Diff. Pos.), 2L (131 Diff.), 3 (124 Diff.), 4 (61 Diff.), 5L (47 Diff.), 6 (30 Diff.), 7 (34 Diff.) & 8 (24 Diff.), incl. Fine Pairs & Two Strips of Three, also incl. approx. 20 Duplicate Pos., Wide Variety of Shades & Cancels, Above Average Plating Quality, Many Four Margin Stamps, nearly 100 with Part or Cpl. Sheet Margin, An Excellent Nucleus for the 3c Red Reconstruction (Cat. value does not incl. premiums for shades, cancels, Multiples or Plate Varieties)	2,005.50
499	⊗	3c Red (11) , Huge Margins All Around, shows bits of Four Other Stamps, ms. cancel, tied by Large Brilliant Blue "San Prairie Wis" Balloon-Type pmk. on cover to Vt., Extremely Fine	E.III
500	⊗	3c Claret (11a) , Margins to touched, tied by Bold Green Grid, matching Bold "Schaghticoke N-Y." pmk. on 1852 folded letter, VF, A Beauty(Photo)	45.00
501	⊗	3c Red (11) , Huge Margins, shows bits of Four other Stamps, tied by "Mineral Point Wis T" pmk. on cover, minor stains at cover edges, Stamps Extremely Fine	E.II
502	⊗	3c Red (11) , Pos. 89L3, Two Extra Frame Lines at L. , Ample to Large Margins, tied by Blue "Durham N.H." pmk. on fresh cover, VF, Choice	E.III
503	⊗	3c Red (11) , Three Huge Margins, bit in at T., Bold Small Blue "Paid" in Grid cancel, not tied as usual, matching "Jewett City Conn." pmk. on cover, Fine & Scarce	E.IV

504	3c Red (11). Margins Nearly All Around, tied by Green "Morganfield Ky." pmk. on Registered cover, minor cover wear, o/w Fine & Scarce	45.00+
505	3c Red (11). Large Margins, tiny repair at T.R., tied by Green "South Framingham Mass." pmk. on cover, Fine	45.00+
506	3c Red (11) Pos. 61R5L, L. Straddle Margin Showing Bit of 70L5L, other margins Large to just in, tied by Bold "Richmond Ind." pmk. on cover, Fine & Scarce	E.VI
507	3c Brownish Carmine (11). Margins Virtually All Around, Nice Color, tied by "New-York" Three Slug pmk. on Cover to Mansfield, Ct. Apparently P.M. decided to "test" his cancelling devices. The cover bears "Mansfield Con." pmks. (two). "Paid 3", "5", "10" in Circles, "Free" & "Paid" Str. Lines, All in Blue, Most Unusual, A "Conversation Piece" (Photo)	E.IX
508	3c Red (11). Average, tied by Green "Moosup Ct." pmk. on Remarkably Fresh Nov. 1854 Folded Letter, A Lovely Cover	E.IV
509	3c Red (11). Margins to slightly in, just tied by Grid, Blue "Buffalo N. Y." pmk. on 1853 folded letter with Red Boxed "From Western Hotel Ira Osborn. Buffalo." Fine & Scarce	E.III
510	3c Brownish Carmine (11). Large Margins, small crease, tied by Large Ultramarine Grid, matching "Norwichtown Ct." pmk. on Neat Cover, Aug. 1852 Usage, Very Pretty	E.IV
511	3c Red (11). Margins Nearly All Around, minor fault at R., tied by Bold Green "York Pa" pmk. on cover, VF Strike	45.00+
512	3c Red (11). Major Cracked Plate, Pos. 84L5L, Large Margins to slightly in, tied by "Milwaukie Wis." pmk. on cover, Scarce	50.00
513	3c Red (11). Cracked Plate, Pos. 9R5L, the "Queue Crack", Three Large Margins, T. frame line touched, neatly tied by "Bristol Ct. June 24 1857" pmk. on cover, small stain from cover mend at T., o/w Fine	50.00
514	3c Brownish Carmine (11). Two Small Lady's Covers to Indiana, same correspondence, each with Fancy "West Hartford Ct." 39½x23mm Truncate Octagon pmk., one in Red; Black pmk. ties stamp, other stamp not tied, tiny ms. "X" cancel, minor flaws, Pretty Lot	E.VI
515	3c Red (11). Horiz. Pair, Large Margins to trifle in, tied by "Norwalk Ct." pmk. on Fresh Envelope to New Milford, Fine	E.III
516	3c Red (11 four, 26 five). Tied on Diff. covers by Town pmks. incorporating "Paid" or "3 Paid", also incl. No. U10 with same type pmk., Eight Diff. Towns, VG-F, Scarce Lot	E.III

517	5c Red Brown (12). Ample to Large Margins, Grid cancel & bit of Town pmk., VF (Photo)	525.00
518	5c Red Brown (12). Clear to Ample Margins, Rich Color, Town pmk., VF (Photo)	525.00

519	5c Red Brown (12). Three Large Margins, shows bits of Next Stamp at R. & B., just clear at L., Magenta Grid cancel & bit of pmk., Fine & Handsome (Photo)	525.00+
520	5c Red Brown (12). Ample to Large Margins, light Town pmk., couple small thins, VF Appearance (Photo)	525.00
521	10c Green, Ty. I (13). Large Even Margins, neat Grid cancel, tiny margin thin far from design, still VF (Photo)	350.00
522	10c Green, Ty. II (14). Three Large to Huge Margins, clear to barely touched at L., tied by Bold Circular Grid of Squares, "Mystic River Ct." Balloon Type pmk. on Fresh Amber Cover to the U.S. Consul at "Lahinia Maui Sandwich Islands", Fine & Scarce (Photo)	175.00
523	10c Green, Ty. II (14). Three Huge Margins, clear to barely touched at R., tied by Partly clear Cal. Town pmk. on cover, Fine	175.00

524	10c Green, Ty. II (14). Horiz. Strip of Three , Three Large to Huge Margins, clear at R., "New Orleans La. Jun 15 1857" pmks., middle stamp partly erased ms. line, VF Strip, L. Pair Magnificent(Photo)	375.00+
525	10c Green, Ty. III (15) . Ample to Large Margins, Light Town pmk., faint toning, tiny corner crease, o/w VF	115.00
526	10c Green, Ty. III (15) . Large Margins, Blue Town pmk., VF (Photo)	115.00
527 ☒	10c Green, Ty. III (15) . Ample to Large Margins except just clear at B., tied by light N.Y. town pmk. on cover to "Big Oak Flat . . . Cal.", slightly reduced at R., Fine	160.00
528	10c Green, Ty. IV (16) . Recut at T., Pos. 3R1, Large Margins to Touched, slightly broken filing crease, tied by "Newport R.I." pmk. on large portion of 1856 folded cover to S.F., Attractive & Scarce, ex-Chase, Davidson	650.00
529 ★	12c Black (17) . Pos. 1L1, Huge T.L. Sheet Corner Margins, others Large to frame line just showed at B.L. corner, Intense Shade, vert. crease, few other light creases, Extremely Fine Appearance, A Magnificent looking Stamp	700.00
530	12c Black, Part India Paper (17 var) . Pos. 34L1, Ample to Huge Margins, Magnificent Proof-like Impression, Bold Blue Philadelphia pmk., tiny pinhole, Extremely Fine Appearance, Very Rare, Probably Less than 20 Known	E.VIII
531	12c Intense Black (17) . Large to Huge Margins incl. Part B. Sheet Margin, light Grid cancel, light crease, Extremely Fine Appearance	100.00
532	12c Black (17) . Large to Huge Margins, Blue Town pmk., evenly toned, o/w Extremely Fine	100.00
533	12c Black (17) . Large to Huge Margins, shows bit of Next Stamp at R., very light Blue Town pmk., crease, Extremely Fine Appearance (Photo)	100.00
534 ☒	12c Black (17) . Three Ample to Huge Margins, in at B., tied by Large "New Orelans La." pmk., paying Quadruple Domestic Rate on large size Court House cover, reduced & refolded, Very Scarce Usage	500.00
535 ☒	12c Black (17). Horiz. Pair , Large Margins to cut in, heavy filing crease in one, tied by Blue "Cincinnati, O." pmk. on 1854 folded letter to England & Fowarded to Rome, Wide Range of Transits, several cover splits along folds, still Attractive	250.00

1857 ISSUE

536	1c Blue, Ty. I (18). Horiz. Pair , light Town pmks., L. stamp reperfed at B., o/w Fine Pair	380.00
537	1c Blue, Combination Ty. I, II (18, 20). Vert. Strip of Three , Ty. II, II, I, Beautiful Color, faint ms. cancels, middle stamp two toned specks, few nibbed perfs. at B., o/w VF, Handsome Strip	335.00
538 ☒	1c Blue, Ty. I (18). Vert. Pair & Single , Nicely Centered, one stamp single short perf., tied by Grids, "Rockville Md." pmk. on cover to N.H., VF & Handsome	570.00+
539 ☒	1c Blue, Ty. I (18). Horiz. Pair & Single , minor perf. flaws, tied by "New-York Jul 27" pmks. on 1861 cover to Saratoga Springs, Attractive & Scarce	570.00+
540 ☒	1c Blue, Ty. I, II (18, 20) . Pl. 12, two Ty. II, minor faults, single ms. line cancel, just tied by Large "Winchester Centre Ct." Octagon pmk., on Fresh Buff Cover, Unusual & Very Scarce	360.00+

541	1c Blue, Ty. Ia (19). Beautiful Deep Rich color, tied on small piece by Green Town pmk. , reperfed, Rare (Photo)	950.00+
542	1c Blue, Ty. Ic (19 var). Pos. 47L4, Grid cancel, reperfed, Fine Appearing Example of this Scarce Sub-Type of Ty. Ia, ex-Ashbrook (Photo)	E.IX
543	1c Blue, Ty. II, Pl. 2, 12 (20). Former N.Y. "Ocean Mail" pmk., perf. faults at T., latter Red Rimless Grid cancel, small tear, Fine Appearing Lot	125.00+
544 ☒	1c Dark Blue, Ty. II (20). Single short perf., tied by "Boston Paid" on Printed Bank Circular, Fresh & Attractive	85.00
545	1c Blue, Ty. II, Pl. 4 (20). Horiz. Pair Pos. 9-10R4, Pos. 10R4 the Only Double Transfer from Plate 4, B. perfs. trimmed, used with damaged No. 20, Pos. 8R4, all tied by ms. Grid cancels, matching ms. "Sentells Store La" pmk. on cover front, Buchannon Carroll corsepe., Extraordinarily Rare, Neinken records Fewer than Ten 10R4's, Perf. or Imperf.	E.VI
546	1c Blue, Ty. III (21). Rich Color, Town pmk., centered to R., Fine (Photo)	450.00
547	1c Blue, Ty. IIIa, Pl. 11 (22) Rejoined Horiz. Pair, Well-Centered, Pittsburgh, Pa. pmks., minor toning on back, tiny thin in one, VF Appearance	170.00
548	1c-10c 1857 Issue (22, 24, 29, 30A, 35). Used, last two Blue Town & Red Grid, 10c natural s.e. at R., few minor faults, Fine Appearing Lot	261.00+
549 ☒	1c Blue, Ty. IIIa, Pl. 11 (22). Unusually Nice Color & Impression from this plate, centered to T.L., tied by Red N.Y. Carrier pmk. on small cover, Fine (Photo)	135.00+
550 ☒	1c Blue, Ty. IIIa (22). Pl. IV, on Unsealed Circular Cover tied by "New Haven Ct. Paid" pmk., stamp & cover some toning, Scarce	125.00
551	1c Blue, Ty. IV (23). Horiz. Pair, Pos. 97-98L1L, Major Double Transfers, Well-centered, neat ms. cancels, L. stamp couple tiny surface scuffs, o/w VF Pair	250.00+
552	1c Blue, Ty. IV (23). Vert. Pair, Large "Paid" in Grid cancels, B. stamp damaged at B.R., centered to B., Scarce	250.00
553 ★	1c Blue, Ty. V (24). R. Part Impt. Horiz. Strip of Three, Pos. 58-60R9, with "Carpenter & Co. Bank Note E . . . No." showing the " Carpenter " Error, Part o.g., R. pair thin, Fine Appearance, Excellent Plating Piece	142.50+
554 ★田	1c Blue, Ty. V (24). Block, Fresh, Rich Color, tiny margin scuff speck in one, o/w VF	200.00
555 ★田	1c Blue, Ty. V (24). T. Margin Block, Pos. 6-7, 16-17L10, Well-centered, o.g., some perf. strengthening, gum toning, three stamps minor surface scuffs, F-VF Appearance	200.00
556 ★田	1c Blue, Ty. V (24). B. Margin Block, Pos. 88-89, 98-99L10, Brilliant o.g., B. Pair Mint, T.R. stamp few clipped perfs., B.R. stamp tiny surface scuff speck, o/w Fine Block	200.00
557 ★田	1c Blue, Ty. V (24). Block with Imperf. R. Pane Margin, Pos. 29-30, 39-40L10, Fresh, o.g., B. pair small faults, o/w Fine Block	200.00
558 ★田	1c Blue, Ty. V (24). Horiz. Block of Six, B.L. pair with B. Sheet Margin, Well-centered, couple trivial faults, o/w VF Block	295.00
559	1c Blue, Ty. V (24). Horiz. Pair & Five Singles, Examples of the "A" through "F" Reliefs, small faults, VG-F Appearance, Desirable Lot ..	94.50
560	1c Blue, Ty. V, Pl. 9 (24). Specialized Collection of Eight Stamps incl. Used & Unused Pairs (latter 92-93L with Full B. Sheet Margin, toned spots), T. Row pos., Imperf. Center Line (one with N.Y. "Ocean Mail" pmk.), mixed quality, G-F Lot	E.VI
561	1c Blue, Ty. V, Pl. 10 (24). Specialized Collection of Four Singles & Three Strips of Three, Plate Vars. incl. No. 10R, other Top Row Stamps, Part Impt. (incl. Strip 68-70R10), mixed quality, G-F Lot	E.VI

562	1c Blue, Ty. V, Pl. 8 (24). Specialized Collection of 12 Singles & Two Pairs, Plate Vars. incl. Curl on Shoulder, Top Row Pos., Impt. Pos., etc., mixed quality, G-F	E.VII
563	1c Blue, Ty. V, Va, Pl. 5 (24, 24 var.). Specialized Collection of 16 Stamps, Nine on Cover, Seven Ty. Va, incl. L. Imperf. Straddle Margin Horiz. Strip of Three (Pos. 41-43R5), etc.; Ty. V incl. Pos. 61L5 with Part Impt., also Horiz. & Vert. strips of Three (on covers), etc., mixed quality, G-F Lot	E.VII
564	1c Blue, Ty. V, Pl. 7 (24). Specialized Collection of 19 Stamps incl. Multiples, Plate Vars. incl. Curl on Shoulder (59R), Perf. & Imperf. Center Line pos., Twelve showing Part Impt., etc., mixed quality, VG-VF	E.VIII
565 ☒	1c Blue, Ty. V (24). Pos. 60R9, Wide Perforated R. Margin with " . . . arpentenar & Co Bank Note En . . . " Portion of Impt. showing the " Carpenterar " Error, also shows traces of Pl. " No. 9 ", faint stain on L., tied by Phila Rimless Grid on 1860 Prices Current, VF & Choice	E.VII
566 ☒	1c Blue, Ty. V (24). Rich Color, tiny tear, Beautifully tied by Bold "Warehouse Point Ct." pmk. on Remarkably Fresh Homemade Wrapper, Scarce & Handsome	E.IV
567 ☒	1c Blue, Ty. V (24). Horiz. Pair, Pos. 69-70L7 with R. Imperf. Pane Margin & Center Line, T. perfs. trimmed, tied by New Orleans, La. pmk. on Feb. 1858 Printed Circular to Austria, Blue Boxed "Printed Circular", Red French Transit & ms. Rates, Red "Wien" backstamp, Attractive	E.IV
568 ☒	1c Blue, Ty. V (24). Horiz. Pair, Pos. 91-92R7 showing Perf. L. Pane Margin, Each with "O" Curl, perfs. trimmed, tied by New Orleans La. pmk. on May 1858 Printed Circular to Austria, Blue Boxed "Printed Circular", Red French Transit, ms. Rate Marks, Red "Wien" backstamp, Attractive	E.IV
569 ☒	1c Blue, Ty. V (24). Horiz. Strip of Three, Pos. 4-6R8, tied by "Woodville Mi" pmks. on fresh cover to La., VF	E.III
570 ☒	1c Blue, Ty. V (24). Horiz. Strip of Three, Well-centered, single pulled perf., tied by "Jewett City Ct." pmks. on cover, some cover soiling, still Attractive	E.III
571 ☒	1c Blue, Ty. V (24). Three Covers, Diff. New Haven, Conn. pmks. incl. "New-Haven Ct. /Mis/ Sent", "New-Haven Conn./Paid" & "1858" Year Date, first missing some postage, o/w F-VF Lot	E.IV
572 ☒	1c Blue, Ty. V (24). Five Diff. Usages, Single on Drop Letter, Single paying N.Y. Carrier Fee, Two Singles paying N.Y. Carrier Fee (ex-Worthington), Strip of Three paying letter rate, Single with No. 26, paying Carrier Fee, quite mixed quality, Interesting Lot	E.V
573	3c Red, Ty. I (25). Partial Reconstruction of Plates 4 (20 Diff. Pos.), 6 (12 Diff.), 7 (53, 52 Diff.) & 8 (Seven Diff.), Most with Town pmk., some with Perf. Pane Margin, usual mixed quality, G-VF, Scarce Lot, Cat. value does not incl. Premiums for Plate vars., etc.)	1,150.00+

574	3c Red (25, 26, 26a). Specialized accumulation of Over 1200 Stamps incl. 49 No 25's & 63 No. 26a's, Wide Range of Shades, Cancels & Town pmks., very few with ms. cancels, incl. Multiples, Plate Varieties, Top Row pos., etc., usual mixed quality, G-VF Lot (Cat. value does not incl. premiums for Cancels, Plate vars., etc.)	3,254.75+
-----	---	-----------

575 ☒	3c Red, Ty. I (25). Average, Rich Color, tied by "Northampton Ms." pmk. on Yellow Cover with Large Illus. of the "Mountain House, Mt. Holyoke", Very Handsome & Fresh	E.III
576 ☒	3c Red, Ty. I, II (25, 26). Single of Each, perfs. slightly in at T. tied by "New-York Feb 20 1859" pmk. on folded letter, Fine, Scarce Combination	E.V
577 ★	3c Red (26). Fresh, o.g., VF	18.50

578	3c Red, 10c Green, Ty. V (26, 35). Horiz. Pair of former, two Str. Line "Steam" cancels, latter two Bold Blue Grids struck "Waffle" Style, 3c small faults, Attractive Lot	E.III
579	3c Red (26). Specialized Collection of Plate Varieties & Part Impts., Six of former incl. Fine Line Recut, Quadruple Plate Flaw (on cover), Eighteen of latter (Six on cover) with Reconstructed Pl. No. 24 R. (incl. Unused Vert. Pair), 26L. & 28R., usual mixed quality, VG-F, Excellent Lot for the Student	E.VII
580	3c Red (26). Partial Reconstruction of Pl. 15, 61 Diff. Plated Positions, only two with ms. cancels, VG-F Lot (Cat. value does not include premiums)	106.75+
581 ☒	3c Red (26). Short perf., Perfectly tied by Str. Line "Paid" , "North Abington Ms." Balloon Type pmk. on Fresh Cover to Boston, Pristine, A Lovely Cover	E.III
582 ☒	3c Red (26). On Small Neat Cover tied by "Waterbury Ct." pmk., Perfect Bold "New-Haven Ct. /Mis/ Sent" pmk., Exceptionally Fine ..(Photo)	E.IV
583 ☒	3c Red (26). Tied by "Ledyard Ct." pmk. on Cover to Iowa, Postmark in Writing Ink Rather Than Cancelling Ink, Fine, Rare town	E.IV
584 ☒	3c Red (26). Grid cancel, not tied, partly readable "Suffield Ct." pmk. on tiny cover to Mass. with Beautiful Illus. Corner Card of the Connecticut Literary Institution at Suffield, Fine & Very Attractive	E.III
585 ☒	3c Red (26). Tied by N.Y. pmk. on cover, opened to show inside bearing Overall Printed Anti-Jewish message "Pauls' Defense", Berlin & Jones Impt. at B., Fine & Most Unusual	E.IV
586 ☒	3c Red (26). Couple wrinkles, Str. Line " Union. " cancel, not tied, matching "Chester Ct. Aug 1" pmk. on cover to Camp Buckingham, Md., Fine & Scarce	E.VI
587 ☒	3c Red (26). Beautifully tied by Bold Unusual "Curtisville Conn." Double Circle pmk. on Small Neat Cover, tiny negligible cover tear, Fine, Scarce Town	E.IV
588 ☒	3c Red (26). Average, tied by Unusual Three Ring Target with Negative Lettering in Outer Circle on Neat Cover, "Plymouth Hollow Ct." pmk., Very Rare (lettering believed to be the Town name)	E.VII
589 ☒	3c Red (26, 26a). Former ms. cancel, not tied, matching "Eudora Ark / Feb. 21 59" pmk. on small cover; latter s.e. at R., ms. cancel, not tied, ms. " Augusta Way " pmk. on 1859 folded letter, Scarce Lot	E.IV
590	5c Brick Red (27). Rich Color, Town pmk., tiny corner crease, Fine Appearance	375.00
591	5c Red Brown (28). Town pmk., reperfed, Fine Appearance	135.00
592	5c Indian Red (28A). Rich True Color, Perforated R. Pane Margin, Town pmk., Centered to R., Fine & Handsome	500.00
593	5c Brown, Ty. I (29). Light Town pmk. & part of Red Transit, Fine	80.00
594	5c Brown, Ty. I (29). Town pmk., Fine	80.00
595	5c Brown, Ty. I (29). Light Town pmk., few slightly nibbed perfs. at T., o/w Fine	80.00
596	5c Brown, Ty. I (29). Two Diff. Shades, one natural s.e. & Guide Line at L., Town pmks., tiny faults, F-VF Appearance	160.00
597 ★	5c Orange Brown (30). Rejoined Horiz. Pair, Fresh, o.g., L. stamp single short perf., o/w VF	650.00
598 ★	5c Brown, Ty. II (30A). Part Impt. inside L. perfs., Fresh, Rich Color, small thin & rounded corner, o/w Fine	200.00
599	5c Brown, Ty. II (30A). Two Diff. Rich Shades, used, each with Diff. Portion of L. Impt., one inside perfs., other Part L. Sheet Margin, small faults, F-VF Appearance	115.00+
600	10c Green, Ty. I (31). Town pmk., reperfed at R., toning virtually all on back, o/w Fine	225.00

601	10c Green, Ty. II, III (32, 33). Well-centered, Town pmks., tiny faults, VF Appearance	125.00
602	10c Green Ty. II, V (32, 35). Horiz. Pair of former, Town pmk., T. perfs. trimmed touching design; Horiz. Pair & Two Singles of latter, Town pmks., Pair with B. perfs. trimmed clear of designs, one single Imperf. L. Pane Margin, VG-F Appearing Lot	230.00
603 ☞	10c Green, Ty. II (32). Deep Shade, tied by Clear "Whitneyville Ct." Double Circle pmk. on Oct. 1859 Folded Cover to Mexico , Fine ..(Photo)	85.00
604 ☞	10c Green, Ty. II (32). Small faults, tied by N.Y. pmk. on 1857 cover to "Hilo Hawaii H.I. S.I.", Attractive & Scarce	E.V
605 ☞	10c Green, Ty. II (32). Two Singles, R. stamp light bend, tied by Unusual Red Grids & Red "New Paid York 24" pmk. on Jan 1859 Cover to France, Red "Deep River Ct." pmk. & Arced "Paid" in Circle, French Transit, Fine & Scarce	140.00+
606 ☞	10c Green, Ty. IV (34). Recut at T., Pos. 3R1, tied on 1858 cover to Vt., perfs. just in at L., Scarce	700.00
607 ☞	10c Green, Ty. IV (34). Recut at T., Pos. 86L1, L. perfs. touch, tiny tear at T., tied by "San Francisco Cal. Mar 5 1859" pmk. on folded cover to Pa., Scarce	700.00
608	10c Green, Ty. V (35). Four Singles comprising Reconstructed Left Imp rint inside perfs., also traces of Pl. "No. 2," mixed condition to be expected, Scarce & Desirable	E.VIII
609 ★	12c Black, Pl. 3, Double Frame Line at R. (36b var.). Fresh, o.g., small natural gum crease, single short perf., o/w Fine	115.00+
610	12c Black (36). Very Well-centered, Oshkosh pmk., VF	37.50
611	12c Black (36). Horiz. Pair, Town pmk., F-VF	75.00
612	12c Black, Pl. 3 (36b). Horiz. Pair, Showing Double Frame Line at R. & L. respectively, Town pmks. & bit of Red Transit, Fine Example of this Variety	85.00+
613	24c Gray Lilac (37). "Paid" in Grid cancels & part of Red pmk., tiny corner crease, VF Appearance	120.00
614 ☞	24c Gray (37). Small stain spot, tied by Grids & Red Phila Pkt. 3 on March 1861 cover to Ireland, Dublin backstamp, cover slightly reduced at L., some faults, reasonably Attractive	E.IX
615 ★	90c Blue (39). Magnificent Centering, single short corner perf., o/w Extremely Fine	700.00
616 P	1c-90c 1857 Reprint Plate Proofs on Card (40P, 42P-47P, LO1P, LO2P). Fresh, F-VF Lot, with original printed envelope	380.00

1861 ISSUE

617	1c Blue (63). Specialized Collection of 18 Singles & Strip of Three (Nine Stamps on Two Covers & one front), Range of Shades & Cancels, mixed quality, G-F	E.VI
618 ☞	1c Blue, 3c Rose (63, 65). Well-centered, tied by Boxed "Paid" cancels & Red Boston pmk. on cover to R.I., VF	E.III
619	3c Rose (65). Minor faults, Bold Waterbury, Ct. Veined Leaf cancel, Fine & Scarce	E.V
620 ☞	3c Rose (65). Circle of Wedges cancel, "Boston Mass." pmk. on cover with Illustr. corner Card Showing "White Line" R.R. Boxcar , VF	E.IV
621 ☞	3c Rose (65). Grid cancels not tied, "Salem Mass" pmk., Bold Str. Line "Unclaimed" on cover to Cambridge, Mass., VF	E.III
622 ☞	3c Rose (65). Bold Geometric cancel, just tied, matching "Portsmouth N.H." pmk. on cover, VF & Choice	E.II

623	✉	3c Rose (65). Tied by "New York 23 June 1862" pmk. & Target on cover to Ct. with Large Ornate Illustr. " American Telegraph Company " Embossed Corner Card, Fine & Scarce	E.II
624	✉	3c Rose (65). Perfs. in at L., tied by Target, "New Haven Con" Double Circle pmk. on Fresh Cover, "Missent & Forwarded" in Circle, Red "Middletown Ct Feb 20 1865" pmk., Handsome Gold Corner Card of the KSE Fraternity at Yale , Very Attractive(Photo)	E.V
625	✉	3c Rose (65). Short perf., tied by Target & "New Haven Con" Double Circle on Fresh Dec. 1863 Cover to Canada, Bold "10", "United States" in Fancy 24mm Oval, Faint "Adv" in Rectangle, Yale College Gamma Nu Fraternity Corner Card, Attractive(Photo)	E.V
626	✉	3c Rose (65). Tied by Bold Geometric of Circles, Squares & Diamonds, matching "Putnam Con" pmk. on cover, VF Strike	E.IV
627	✉	3c Rose, 12c Black (65, 69). Well-centered, tied by Grids & just by Red "New Paid York 6" on June 1862 folded cover to France, Red "P.D." & Calais Transit, VF & Handsome	E.V
628	✉	3c Rose (65). Two Covers, each tied by New Haven, Conn. Negative Star of David , one on Red & Blue Butterfield Patriotic (Profile in Ornate Patriotic Oval), some toning & closed cover tear; other on "Independent Order of Good Templars." (Red Imprints, "Social Combination Against Intemperance.", Seeing Eye, Lodge Information, etc.), stamp has few short perfs., cover faint toning spots, Scarce Lot	E.V
629	✉	10c Green (68). Few slightly nibbed perfs., tied by Negative Star of David, "New Haven Con."pmk. on cover to U.S. Consul, Panama , Attractive	E.IV
630	✉	10c Dark Green (68a). Two Singles, one wide R. Imperf. Straddle Margin, tied by Grids, Red "Middletown Ct. Sep 30 1861" pmk. on cover of San Francisco, Fine	E.III
631	✉	10c Green (68). Three Covers, same corresp. from Lancaster, Pa. to M.D. aboard U.S.S. Osceola at Aspinwall , mixed quality, G-F, Scarce	E.IV
632	✉	12c Black (69). Light crease before use, ms. cancel, not tied, matching "Chenango Pa" pmk. on large printed circular for Beehives , small cover faults, Interesting	E.III
633		24c Red Lilac, Lilac (70 two, 78 two). One of latter Unused, part o.g., all small faults, VG Appearance	168.50
634	✉	24c Red Lilac (70). Well-centered, couple short corner perfs. & negligible perf. tip toning at T., tied by Grid, Red N.Y. Br. Pkt. Credit pmk. on Jan. 1863 cover to England, Red "London Paid", Fine(Photo)	100.00
635	✉	30c Orange (71). Used with 3c Rose & 10c Green (65, 68), all small faults, target cancels, 3c tied by Red French Transit, Oshkosh Wis Nov 18 '64" pmks. on cover to Switzerland, Basel & Zurich backstamps, Scarce Cover	E.VI
636	P	2c Green, Trial Color Plate Proof on India (73TC). Margins to touched, thin partly broken through (virtually all 73TC are more or less faulty), Fine Appearance, Quite Scarce	130.00
637	✉	5c Red Brown (75). Horiz. Strip of Three , natural "dry print", L. stamp margin faults at L., R. stamp some trimmed perfs. at B., Grid cancels, not tied on Jan. 1863 Cover to Belgium , Red "New-Haven Ct." Double Circle, Black "New 9 York", Red "Short Paid" in Box (6c deficiency in postage per "French Mail"), cover bit worn, Rare, Attractive	E.VI
638	✉	15c Black (77). Well-centered, tiny margin tear, Circle of Wedges cancel, not tied on July 1866 Cover to France, Blackish Red "Hartford Con" pmk., Red NY & French Transits, Attractive	100.00
639	✉	24c Lilac (78). Tiny margin tear at T., tied by Target, "West Troy N.Y." pmk. on neat March 1866 Mourning cover to England, Red N.Y. Credit, London backstamp, Attractive(Photo)	100.00

640	24c Lilac (78). Used with Two 2c Black (73) , all well tied by St. Louis Mo. Duplex pmks. on cover to Baden, Red "New York Am Pkt 7 Paid", Blue Boxed "Aachen 29 12/Franco", "Kenzingen" backstamp, minor wear & soiling, o/w Fine, Scarce(Photo)	E.VII
641	24c Lilac (78). Three, tied on 1865-67 covers to England, Ireland & Scotland, Range of Markings, mixed quality, Attractive Lot	E.VI

MASONICS

642	3c Rose (65). Minor faults, Bold Masonic Negative Square & Compass cancel, VF Strike(Photo)	E.III
643	3c Rose (65). Tied by Wonderfully Bold Masonic Negative Square & Compass , "Boston Mass." pmk. on fresh cover, Extremely Fine Strike(Photo)	E.IV
644	3c Green, Grill (136). Natural s.e. & Half Arrow at L., tied by Masonic Negative Square & Compass , "Ithaca N.Y." pmk. on cover, Ins. Agent corner card, Fine Strike	E.III
645	3c Green (158). Minor faults, tied by Huge Bold Masonic Negative Square, Compass & "G" & faint Ohio town pmk. on cover, VF Strike, A Real "Eye-catcher"(Photo)	E.V
646	3c Green on White Entire (U163). Masonic Negative Square & Compass cancel, "N.O. & Alexandria Agt. Jul 23 1883" pmk. Fine	E.III
647	1c Brown on Buff Postal Card (UX3). Bold Masonic Negative Triangle cancel, light Syracuse, N.Y. pmk., VF	E.III
648	1c Brown on Buff Postal Card (UX3). Incredibly Bold Masonic Negative Square & Compass cancel, "Baltimore Md." pmk., 1875 usage, VF, Choice	E.III

CIVIL WAR PATRIOTICS

649	3c Red (26). Average, "New-York" Grid Duplex pmk., not tied on Multicolor Kimmel Patriotic Cover , Monument to Fallen Soldiers of First Battle of Bull Run, Flags, Eagles, Female Allegorical Figure, without flap, Very Handsome & Rare, ex-Wolcott(Photo)	E.XI
650	3c Red (26). Short perfs. at R., tied by "New-York" Grid Duplex on Multicolor Kimmel Patriotic Cover , Female Allegorical, Flag & Shield, Very Fresh, Rare & Beautiful(Photo)	E.X
651	3c Rose (65). Well-Centered, tied by Target & "Washington D.C." pmk. on Multicolor Two Panel Magnus Patriotic Cover , Sailing Vessel & Picturesque View of Hartford, Conn., VF, Very Scarce(Photo)	E.X
652	3c Rose (65). Tied by Blue "Baltimore Md." pmk. on Bronze Magnus Patriotic Cover , Dual Design, Female Allegorical, Flag & Motto at L., "Birdseye" View of Providence R.I. T. Center, couple minor closed cover tears, slight toning, o/w VF, Very Scarce(Photo)	E.IX
653	3c Rose (65). Average, Tied by "Washington D.C. Feb 12 1863" Double Circle (Lincoln's Birthday) on Multicolor Magnus Type Patriotic Cover , Two Masted Ship with "Stars & Stripes" Design Sails, Rare & Handsome(Photo)	E.IX
654	3c Rose (65). Single pulled perf., tied by "Philadelphia Pa. Mar 17 1862" pmk. on Multicolor Patriotic, "The Arms of the Keystone State", small cover mend at T., back somewhat faulty from removal from album, o/w Fine, Very Attractive	E.V
655	10c Green (68). Single short perf., tied by Target & New Haven Con" Double Circle pmk. on Cover to Guatemala , Carriage Maker & Corner Card Surrounded by Patriotic Eagle, Flags, Wreath, etc., cover bit reduced at R., Scarce & Handsome	E.V

656	☒	Kentucky Patriotics , Nine, Eight with No. 65, Six Multicolor, nearly All Better Types, very mixed quality, Scarce Group	E.VII
657	☒	Missouri Patriotics , Four Diff. Multicolor Designs, each with 3c Rose (65) tied by Diff. Town, "Pacific", "Jefferson City", "Jefferson Barracks" & "Ironton", mixed quality, Scarce Lot	E.VI
658	☒	Missouri Patriotics , Four Diff. Better types, Three Multicolor, one with damaged 3c Red (26), Two with 3c Rose (65), one is front only, one stampless, very mixed quality, Scarce Lot	E.VI
659	☒	Patriotics , Nine Diff., Five Multicolor, Two with No. 26, others No. 65, Nearly All Better Types, very mixed quality, G-F Lot	E.VI
660	☒	Patriotics , 26 Unused Covers (one Fremont campaign), Several Scarce Designs, incl. three Magnus, also incl. Beautiful Lake Ontario Magnus Letter Sheet, Nearly all VF	E.IV

PRISONER'S & SOLDIERS COVERS

661	☒	R.I. Barracks. /Prisoner's Letter/ Examined , Partly Clear Oval, "Rock Island Ill. May 18 '64" Duplex pmk. ties 3c Rose (65), s.e. at L., on fresh cover, Fine	E.VI
662	☒	Camp Douglas /Prisoner's Letter/ Examined , Mostly Clear Oval, Blue "Chicago Ill Sept '64" pmk., matching sectional cork cancel ties 3c Rose (65), small faults, on cover to Ky., light cover stains, Scarce	E.VI
663	☒	Soldier's Letter. 1st. Regt. Douglas Brigade. A.W. Roberts. . U.S.V. , Mostly Bold handstamps (signature in ms.), "Warsaw Mo." pmk. & Bold "Due 3" on cover to Ill., bit worn, slightly reduced at L., o/w Fine, Extremely Rare Marking	E.VI
664	☒	3c Rose (65) , Tied by "St Louis Mo" pmk. on cover with Printed Corner Card of "Ladies' Rooms of the Mississippi Valley Sanitary Fair. . .", Printed Anti- Slavery Circular enclosed, VF & Unusual	E.III

1867 GRILLS—BANK NOTE ISSUES

665	☒	3c Rose, D. Grill (85) , Minor perf. toning, on Small Cover tied by Odd Grid of Diamonds & "Falls Village Ct." pmk., Very Scarce, signed Brookman	150.00
666	☒	12c Black, Z. Grill (85E) , Perfs in at R., few nibbed or pulled, cork cancel, tied by Red "Veriviers. . Coeln/Franco", "Columbus Ga." pmk. on 3c Pink Entire (U58), 1868 Usage to Germany, printed return corner card, various Transits & Forwarding pmks., cover faults & reduced into embossed design at R., Scarce	E.VII
667	☒	1c Blue, E. Grill (86) , Used with 2c Black (73), both minor faults, tied by Targets, Minn. Town pmk. on cover, Attractive	E.IV
668	☒	2c Black, E., F. Grills (87, 93) , Small faults, Blue cancels, not tied, matching "Carrier" pmks. on covers (former front only), Attractive	E.III
669	☒	3c Red, E. Grill (94) , Perfs. in at B., rounded corner, on Small Cover tied by Bold "24" in Circle, "Chester Ct." pmk., Scarce Postmark	E.IV
670	☒	3c Ultramarine (114) , Tied by "Kennebunk Me." pmk. on 1869 "Western Union Telegraph" cover to Kennebunkport, with enclosure, VF	E.III
671	☒	7c Vermilion, Grill (138) , Strong Grill, R. perfs. touch, tiny corner crease, tied by Cork, "San Francisco Cal." pmk., Red N.Y. Br. Transit on cover to Bavaria, Attractive	185.00
672		3c Green (147) , Bold Danbury, Ct. Negative Hat cancel, VF	E.III
673		3c Green (147) , Two, one with Major Cracked Plate at B., other Marked Short Transfer, also incl. No. 158 with Bold Offset on back, Scarce Lot	E.III

674	⊠	24c Purple (153). Used with 15c Yellowish Orange (163), s.e. at R., both small faults, tied by corks, "Washington D.C." pmk. on "Court House" cover, cover reduced somewhat at sides, Very Scarce	E.VIII
675	⊠	3c Green (158). Natural s.e. at L., tied by Geometric cancel faint "Boston Mass" pmk. on cover with Beautiful Overall Pink Illustr. Ad for "Pathfinder Railway Guide" showing Locomotive & Six Cars , VF, A Beauty	E.III
676	⊠	3c Green (158). Horiz. Strip of Five , natural s.e. at R., Black & Purple Target cancels, tied by "New Haven Conn", Red "New 50" York & "Cape Town Cape Colony" on 1871 Cover to Cape of Good Hope, additional Transits & pmks., cover bit worn at edges, still Attractive, Unusual & Scarce Foreign Usage of a 3c Bank Note(Photo)	E.VI
677	⊠	15c Yellow Orange (163). Natural s.e. at L., used with 3c Green (158) & 10c Brown (150), small faults, cork cancels, 3c tied, Red "New 24 York" & "London Paid" Credits on 1874 cover to Cape Town, South Africa , Bold Red "+1", bit reduced at R., Very Scarce	E.V
678	⊠	15c Orange (163). Barely tied with 3c Green (158) by Corks, "Boston Mass. Reg." rimless pmk. on cover to Me., Fine	100.00
679	⊠	15c Yellow Orange (163). Tiny tear, just tied with average 3c Green (153) by blurry Corks, "Savannah Mo" pmk. on Reg. cover to Me., Fine	100.00
680	⊠	15c Reddish Orange (163). Minor faults, used with 6c Dull Pink (159), both tied by Square of Squares, "St. Louis Mo." pmk. on large size cover, minor cover faults, reduced at L., Scarce	E.IV
681	★	30c Full Black (190). Fresh, nearly Full o.g., tiny toned spot, tiny thin speck, Fine Appearance(Photo)	185.00
682	⊠	2c Red Brown, 3c Green (208, 210). Two covers, 3c tied by Bold Zig Zag Geometric cancel, matching "Putnam Conn." pmk., 2c Bold "MB" cancel, not tied, matching "Mystic Bridge Conn." pmk., VF Lot	E.IV
683	⊠	2c Red Brown (210). Two Covers, Stamps partly affixed over "Held For Postage" Handstamps, Diff. Types (N.Y. & Phila.), each with label explaining delay in delivery, latter affixed on back across flap & torn upon opening, Scarce Lot	E.IV

1890 ISSUE—POSTAL CARDS

684	⊠	15c Indigo (227). Large Margins, Well tied by Bold "New Haven Conn." Oval Grid Duplex on May 1890 Cover to Cape of Good Hope , forwarded from Wellington to Cape Town, "Id" handstamp (postage due), Fine ..	E.V
685	★	50c Columbian (240). Disturbed o.g., gum soak at B., VG	215.00
686	★	\$1.00 Columbian (241). Thin spot & couple creases, o/w Fine (Photo)	625.00
687	★	\$2.00 Columbian (242). Nearly Full o.g., thin spot & crease, couple minor gum soaks, o/w Fine(Photo)	650.00
688	⊠	2c Red (279B). Three, two with natural s.e., tied on matching 1900 covers, Multicolor Illustr. Ad corner cards of Billiard Ball mfr. showing Elephants Shooting Pool , some cover toning, irregularly opened slightly affecting one stamp & one corner card, each with elaborate, multicolor letterhead enclosure, Fine, Unusual	E.V
689	⊠	1c-10c Trans-Miss. (285-290). Most Well-centered, all tied by "Yonkers, N.Y. Jul 19 98 Rec'd." pmks. on large size Reg. cover to Germany, VF & Handsome Cover	E.VI
690	⊠	5c Pilgrim (550). Vert. Pair & Single on cover to Germany; Vert. Pair used with 2c Pilgrim (549), all s.e. at L., one 5c, s.e. at B., on Reg. cover, also incl. Nos. 513, 616 & 650 on reg. cover, small faults, F-VF Appearance	E.III
691	⊠	5c Huguenot-Walloon, Norse-American (616, 621). Horiz. Pair of each tied on separate 1928 Lindbergh C.A.M. 2 Flight Covers, Fine	57.00+

692	⊠	20c Parcel Post (Q8). Tied by "San Juan P.R. Jan 9 1929 pmk. & Purple First Flight Cachet (F.A.M.6.) on 5c Blue on White Puerto Rico Entire (U14) , reduced & refolded to 4½ x 3¾", Fine, Unusual Usage	E.V
693	⊠	1c Parcel Post Due (JQ1). Vert. Pair, natural s.e. at L., tied on large size cover by "New York N.Y. Oct 1 1915." Duplex, part of postage paid by 2c Red (425) tied by "Received In Package Box Collection" Wavy Line pmk., some cover faults, JQ1 Pair VF, Unusual Cover	65.00+
694	⊠	3c Red on White Entire (U9). Bold " Harmony College S.C. " pmk. ("ol" struck off cover), minor water stain at L., o/w Fine, Scarce	E.IV
695	⊠	1c Postal Cards (UX20, UX21). 14 & 35 respectively, used, same correspondence, virtually all VF	73.50

CONFEDERATE STATES

696	⊠	Charleston S.C. Jan 4 1861, Partly Clear Independent State pmk., ms. & grid cancel tie 3c Red (26) perfs. trimmed, on cover, Forwarded with another No. 26, Grid cancel, not tied, matching partly Clear "Sumpter S.C. Jan 10 1861" pmk., cover bit irregular at T., Scarce	E.V
697	⊠	Charleston S.C. Jan 24 1861, Bold Independent State pmk., matching Grids tie 3c Red (26) on folded letter to N.Y., faint cover toning band, still VF	E.III
698	⊠	Rutledge Ga. Jan 31/61, ms. Independent State pmk., matching ms. "X" ties 3c Red (26) on cover, Fine & Scarce (Ga. Independent State for only 17 Days)	E.V
699	⊠	Savannah Ga. Apr 10 1861, Confederate pmk. & Grid on 3c Red Entire (U10) to Gov. of Ga., ms. docketing, Fine	E.IV
700	⊠	Waterproof La. Feb 15, Partly Clear Confederate pmk. ties 3c Red (26) on cover to Natchez, Miss., ms. 1861 docketing, Scarce Town	E.VI
701	⊠	Columbia S.C. Apr 25, Clear Blue Confederate Statehood pmk. ties 3c Red (26), small piece out at L., on back of Confederate Multicolor 7-Star Flag Patriotic (Dietz Ty. B-15), to "18 Mile S.C. P.D.", cover opened to show both sides, slightly reduced at R., couple really trivial cover faults, o/w VF, Very Rare	(Photo) E.X
702	⊠	5c Green (1). Two, one with defective T.R. corner, other VF, both tied by "New Orleans La." pmk. on cover, Handsome	E.IV
703	⊠	5c Light Blue (4). Two, Large Margins All Around, one minor gum stains, Blue Grid cancels, not tied, matching "Raleigh N.C. Jul 4" pmk. on cover to Richmond, VF	E.V
704	⊠	5c, 10c Blue (7, 12). Two Covers, Horiz. Pair of former, Margins All Around, tied by "Staunton Va." pmk.; latter Large Margins, tied by light Blue "Morgantown N.C." pmk., covers bit aged, o/w VF	E.III
705	⊠	Confederate \$1,000.00 Bond, 1862 North Carolina Bond Cpl. with 35 Coupons, 17x19½", VF Collateral Item	E.III

U.S. POSSESSIONS

HAWAII

706	⊠	Honolulu * Hawaiian-Islands * Dec. 23, Bold Red pmk., partly clear "San Francisco Cal. 21 Jan" Transit & Bold Matching "SHIP" & "12" on cover to Mass., trivial wear, o/w VF, Rare	(Photo) E.X
707	⊠	Honolulu U.S. Postage Paid Nov 16, Bold Red pmk., Red "San Francisco Cal 12 Paid Dec 12 1859" Transit on cover to Maine, Str. Line "Overland" (part of "Ove" off cover at T.), trifle aged, still Fine, Attractive & Rare	(Photo) E.XII
708	⊠	Honolulu U.S. Postage Paid Mar 9, Bold Red pmk., U.S. 5c Brown (76) , corner off, tied by Target, "San Francisco Cal Apr 3 1865" pmk. on cover to Maine, some cover wear & minor water stains, Very Scarce	E.VI

709	⊠	1875-82, 2c Brown, 5c Ultramarine (35, 39), 2c tied on cover, "Post Office Hilo. H.I. Apr 1880" pmk., Honolulu rec'g pmk., couple small holes in cover; 5c tied by Purple "Wailuku Maui Jul 12 1889" pmk. & Honolulu Transit to La., S.F. Transit on back, sealing wax stain, Attractive Lot	37.50
710	⊠	1893, 1c Purple, Blue, Ovpts. (53, 54). Tied by Honolulu, Aug. 1893 duplex pmks. on fresh local covers, VF	50.00
711	⊠	1893, 2c Brown, Ovpt. (56). Well-Centered, tied by light Purple "Hakalau Hawaii" pmk. on fresh cover, VF & Choice	45.00
712	⊠	1893, 2c Dull Violet, Ovpt. (57). Horiz. Pair, used with 1c Yellow (74), 1c corner wrinkle, tied by "Honolulu H.I. Mar 3 1894" duplex pmks. on Druggists & Tobacconists Corner Card cover to Cal., S.F. backstamp, Fine & Attractive	E.IV
713	⊠	1893, 5c Deep Indigo Ovpt. (58). Tied by Purple "Hilo, Hawaii Jul 24 1893" pmk. on cover, Honolulu backstamp, VF Cover	45.00
714	⊠	1893, 6c Green, Ovpt. (60). Tied on fresh cover to Honolulu, VF Cover ..	45.00
715	⊠	1893, 2c Rose, 10c Vermilion, Ovpts. (66, 67). 2c corner off before use, tied by "Kahului, Maui. Jul 22 1893" pmks. on Reg. cover, Red Honolulu rec'g pmk., Fine Cover	E.V
716	⊠	1893, 2c Rose, Ovpt., No Period after "Govt" (66, 66b). Latter Wide natural s.e. at L., tied on Diff. covers, VF	E.IV
717	⊠	1886, Wells Fargo Frank on White Envelope, Blue Inside (M-H 381). Unused, VF	E.V

LARGE & MISCELLANEOUS LOTS

718	⊠	COVERS, 1844-1915, 26, Most 1851-61 Issues, also incl. Three Unused Civil War Patriotics, Some Better Items, mixed quality G-F Lot	E.VI
719	⊠	COVERS, 1851-61, Eleven, incl. No. 11 to Canada, 24 & three 26's to Canada, No. 32 from Cal. to Me., No. 36 single on front only, etc., also three Entires incl. No. U59 with "Way" cancel, mixed quality, G-F, Desirable Lot	E.VI
720	⊠	COVERS, 1857-1904, 13 Items, incl. No. 65 on All Over Green Insurance Co. Adv. Nos. 288 to Denmark, 326 to England, 2c 1894 on Advertising Collar, also some misc. U.S. & Foreign Stamps, incl. Pair of Nos. 287 & 290 on part covers to Denmark, Interesting Lot	E.VI
721	⊠	19th CENTURY COVERS, Approx. 55, Range of Issues, Mostly 1851-61, Several Better Items, quite mixed quality, Rewarding Lot	E.VII
721A	⊠	COVERS, Approx. 500 Late 19th Century, same correspondence, approx. 100 have <i>Illustr. Ad.</i>, many <i>Multicolored</i>, some with contents on <i>Illustr. Letterheads</i>, also incl. some collateral material, mixed quality, mostly F-VF. An Interesting Lot	E.XI
722	⊠	COVERS, Late 19th to early 20th, Approx. 35 covers & cards, incl. RPO's, RR illustrations, other assorted corner cards, all covers with original correspondence, very mixed quality, Unusual & Interesting Lot	E.IV
723	E	ESSAYS, Four Items, No. 33E-Ud, No. 62E-Ac in Green, No. 67P5 & No. 85E-Ea Blue (Pair), couple minor faults, o/w VF	E.IV
724	⊠	NEW HAVEN CT. COVERS, 1851-61, Six, Four Ad covers, one with 10c Green (68) to Cal., one with "New-Haven Ct. Mis-Sent", also incl. Four later Conn. covers incl. Span.-Am. War Patriotic, VG-F Lot	E.VII
725	⊠	PATENT CANCELS, 1861-81, Eight, incl. N.Y., Albany (Two Diff.), Buffalo, Boston, Phila. & Providence, R.I., Two on Entires, one on Postal Card F-VF	E.VII

726	☞	SPANISH-AMERICAN WAR COVERS , 1901-03, Eight, All with Matching Multicolor Crossed U.S. & Cuba Flags with Eagle, contemporary franking, with contents, six with Patriotic letterhead, all more or less faulty, Scarce	E.IV
727	☞	WISCONSIN COVERS , 1851-98, Collection of 45 Covers, Mostly 1851-61 Issues, incl. No. 10, 24 (three), Illustr. Ad Covers, etc., mixed quality, VG-F Lot	E.VI
728	☞	COVERS TO RUSSIA , 1879-1899, Five Covers & Two Postal Cards, Excellent Range of Markings, one Reg. cover, Fine & Scarce	E.VIII

END OF SALE — THANK YOU

In the event of a Postal Strike it is possible that we will have to postpone this Sale.

DESCRIPTIONS

EXTREMELY FINE: The finest condition for noteworthy, outstanding stamps.

VERY FINE: (VF) In prime condition such as to satisfy the requirements of particular collectors.

FINE: (F) Perforations or margins do not touch design on issues after 1890 but in some cases may just touch in earlier issues. If used, fairly light cancellation.

VERY GOOD: (VG) Generally nice appearance but margins or perforations may cut in slightly.

GOOD: (G) Average off-centering or fairly attractive with slight defects.

ORIGINAL GUM is not to be expected on 19th century stamps unless so stated in the description.

MINT: With original gum and never hinged.

Unless otherwise noted the Scott 1978 United States Specialized Catalogue and Scott 1979 Standard Postage Stamp Catalogue Vol. 1 have been used for cataloguing lots in this sale.

IS YOUR COLLECTION FOR SALE?

**REALIZE IMMEDIATE CASH
PLUS THE ADDED ADVANTAGE OF
SELLING THROUGH OUR AUCTIONS**

We will advance immediate cash up to 75% of our appraised value.
There is no interest charge.

Your collection is then sold in one of our auction sales. All stamps are expertly and advantageously lotted in attractive, well illustrated catalogs. Lotting is meticulously planned under our personal supervision. Commission is 20% of the gross realization. There is **no lotting fee** nor any other charges. Final settlement is made within five weeks after the sale. We have continuously conducted stamp auctions for over forty-eight years.

Valuable collections and stamp holdings are especially wanted, but we will accept properties valued from \$500 upwards. Send all stamps directly for appraisal. Auction advance will be remitted shortly after receipt. If not entirely pleased, stamps will be returned at our expense. We will travel anywhere to inspect important properties.

**ROBERT A. SIEGEL
AUCTION GALLERIES, Inc.**

(Licensed and Bonded Auctioneer)

**120 EAST 56th STREET
NEW YORK, N.Y. 10022
(Tel. 753-6421)**

UNITED STATES POSTAL HISTORY

19th CENTURY STAMPS

1	35	56	125	111	90	168	70	224	30	280	55
2	95	57	32½	112	300	169	100	225	18	281	35
3	70	58	65	113	180	170	625	226	27	282	40
4	30	59	37½	114	210	171	115	227	25	283	55
5	52½	60	32½	115	70	172	80	228	26	284	42½
6	85	60A	90	116	180	173	20	229	37½	285	24
7	85	61	35	117	220	174	30	230	47½	286	50
8	28	62	70	118	210	175	140	231	35	287	160
9	1100	63	130	119	115	176	450	232	26	288	70
10	52½	64	190	120	50	177	50	233	20	289	105
11	52½	65	52½	121	375	178	1050	234	26	290	90
12	90	66	135	123	725	179	1800	235	475	291	37½
13	115	67	85	124	32½	180	350	236	625	292	50
14	35	68	52½	125	15	181	270	237	100	293	52½
15	67½	69	95	126	30	182	270	238	42½	294	32½
16	85	70	105	127	21	183	160	239	40	295	47½
17	30	71	40	128	20	184	180	240	90	296	45
18	30	72	75	129	20	185	600	241	62½	297	WD
19	850	73	105	130	125	186	180	242	27	298	475
20	85	74	210	131	30	187	62½	243	25	299	65
21	500	75	105	132	30	188	28	244	17	300	110
22	25	76	180	133	32½	189	23	245	47½	301	30
23	47½	77	200	134	160	190	50	246	37½	302	62½
24	475	78	105	135	55	191	35	247	32½	303	42½
25	50	79	150	136	32½	192	17	248	28	304	55
26	45	80	75	137	52½	193	70	249	15	305	42½
27	65	81	125	138	35	194	52½	250	21	306	15
28	200	82	30	139	325	195	500	251	37½	307	20
29	525	83	15	140	2300	196	375	252	25	308	20
30	70	84	35	141	750	197	65	253	80	309	130
31	45	85	32½	142	900	198	40	254	32½	310	80
32	37½	86	85	143	900	199	42½	255	30	311	600
33	57½	87	90	144	115	200	300	256	15	312	85
34	30	88	65	145	130	201	30	257	42½	313	57½
35	17	89	23	146	100	202	30	258	15	314	62½
36	65	90	115	147	23	203	52½	259	15	315	70
37	28	91	115	148	100	204	55	260	20	316	62½
38	42½	92	90	149	15	205	45	261	21	317	11
39	200	93	80	150	10	206	32½	262	32½	318	26
40	10	94	65	151	15	207	30	263	32½	319	12
41	65	95	52½	152	575	208	30	264	26	320	575
41A	250	96	160	153	270	209	27	265	15	321	90
42	70	97	37½	154	35	210	26	266	16	322	35
43	190	98	22	155	55	211	57½	267	16	323	42½
44	135	99	100	156	50	212	23	268	20	324	30
45	75	100	110	157	20	213	62½	269	32½	325	67½
46	37½	101	65	158	900	214	26	270	47½	326	80
47	57½	102	45	159	575	215	15	271	35	327	135
48	85	103	125	160	210	216	30	272	50	328	16
49	95	104	260	161	625	217	27	273	90	329	325
50	35	105	57½	162	110	218	35	274	55	330	85
51	50	106	100	163	50	219	18	275	22	331	50
52	40	107	95	164	1000	220	80	276	37½	332	37½
53	28	108	67½	165	850	221	75	277	47½	333	26
54	55	109	26	166	260	222	27	278	85	334	62½
55	180	110	20	167	180	223	35	279	55	335	27

336	95	407	20	478	40	549	140	620	45	691	47½
337	12	408	18	479	40	550	42½	621	47½	692	62½
338	35	409	90	480	70	551	60	622	22	693	52½
339	40	410	21	481	45	552	21	623	15	694	35
340	57½	411	20	482	22	553	135	624	50	695	21
341	135	412	115	483	55	554	210	625	85	696	47½
342	57½	413	80	484	16	555	210	626	32½	697	40
343	85	414	105	485	70	556	210	627	105	698	52½
344	47½	415	28	486	260	557	210	628	52½	699	42½
345	250	416	67½	487	80	558	290	629	28	700	62½
346	65	417	800	488	80	559	32½	630	23	701	170
347	57½	418	220	489	280	560	80	631	37½	702	26
348	120	419	105	490	35	561	32½	632	26	703	65
349	375	420	15	491	3500	562	95	633	23	704	32½
350	67½	421	20	492	115	563	115	634	85	705	52½
351	725	422	20	493	57½	564	120	635	130	706	375
352	700	423	20	494	57½	565	75	636	50	707	575
353	375	424	600	495	52½	566	50	637	140	708	105
354	425	425	300	496	57½	567	55	638	50	709	57½
355	160	426	170	497	105	568	67½	639	125	710	220
356	475	427	32½	498	800	569	57½	640	210	711	160
357	21	428	27	499	75	570	25	641	120	712	150
358	50	429	23	500	210	571	20	642	32½	713	75
359	32½	430	32½	501	26	572	32½	643	37½	714	145
360	210	431	32½	502	30	573	280	644	37½	715	105
361	230	432	26	503	52½	574	625	645	65	716	130
362	32½	433	22	504	42½	575	42½	646	24	717	95
363	425	434	18	505	14	576	40	647	21	718	65
364	35	435	35	506	28	577	45	648	47½	719	130
365	47½	436	10	507	230	578	18	649	525	720	130
366	27	437	32½	508	55	579	115	650	425	721	190
367	21	438	95	509	35	580	125	651	575	721A	500
368	18	439	62½	510	50	581	45	652	400	722	62½
369	52½	440	37½	511	23	582	100	653	375	723	67½
370	18	441	525	512	45	583	32½	654	62½	724	115
371	12	442	450	513	37½	584	19	655	135	725	65
372	37½	443	85	514	110	585	26	656	100	726	52½
373	115	444	75	515	42½	586	85	657	62½	727	95
374	90	445	325	516	42½	587	37½	658	62½	728	105
375	425	446	170	517	700	588	80	659	85	END OF SALE	
376	32½	447	32½	518	675	589	15	660	40	THANK YOU	
377	17	448	170	519	375	590	240	661	110	GROSS	
378	180	449	125	520	160	591	47½	662	95	REALIZATION:	
379	65	450	85	521	280	592	450	663	220	\$100,574.50	
380	30	451	47½	522	375	593	85	664	80		
381	27	452	125	523	50	594	67½	665	52½		
382	27	453	95	524	650	595	37½	666	52½		
383	16	454	62½	525	85	596	42½	667	32½		
384	25	455	85	526	325	597	425	668	16		
385	32½	456	325	527	110	598	32½	669	26		
386	19	457	170	528	160	599	55	670	42½		
387	80	458	700	529	575	600	52½	671	90		
388	47½	459	1250	530	180	601	90	672	32½		
389	28	460	95	531	110	602	32½	673	52½		
390	32½	461	1550	532	160	603	120	674	115		
391	32½	462	1800	533	70	604	75	675	90		
392	23	463	37½	534	90	605	350	676	90		
393	70	464	52½	535	170	606	200	677	75		
394	30	465	62½	536	80	607	190	678	62½		
395	30	466	160	537	220	608	80	679	40		
396	26	467	50	538	450	609	80	680	30		
397	85	468	400	539	200	610	210	681	95		
398	75	469	42½	540	200	611	105	682	50		
399	50	470	1150	541	675	612	32½	683	67½		
400	18	471	60	542	160	613	85	684	115		
401	50	472	42½	543	25	614	150	685	52½		
402	32½	473	37½	544	32½	615	525	686	190		
403	37½	474	28	545	67½	616	450	687	200		
404	57½	475	42½	546	375	617	47½	688	67½		
405	42½	476	160	547	115	618	47½	689	190		
406	30	477	67½	548	85	619	30	690	20		