

**SPECIAL SALE: Sponsored by The Arizona Philatelic Rangers  
(Non-profit Organization)**

# **UNITED STATES**

**19th & 20th Century**

**including**

## **ARIZONA TERRITORIAL COVERS**

## **ALL ZEPPELINS**

## **ON AND OFF COVER**

## **GENERAL FOREIGN**

**Including Lots By Countries**

**ENTIRE PROCEEDS WILL BENEFIT THE  
WESTERN POSTAL HISTORY MUSEUM**

**COME TO THE AUCTION AND ALSO SEE**

**"La Fiesta De Los Vaqueros"**

**THURSDAY, FEBRUARY 21, 1974**

**Real Cowboy Breakfast at the  
Pioneer International Hotel**

**Big Western Parade  
(non-motorized) at 10:00 A. M.**

**RODEO on four consecutive afternoons  
starting February 21st**

**PUBLIC AUCTION**

**Sunday, FEBRUARY 24th, 1974 at 1:00 P. M.**

**TERRITORIAL CLUB, 9th Floor, TUCSON FEDERAL SAVINGS TOWER  
32 North Stone Avenue, TUCSON, ARIZONA**

**AUCTION PREVIEW at the same location on SATURDAY, February 23rd from Noon  
till 5:00 P. M. Also on SUNDAY, February 24th from 9:00 A. M.  
till the auction begins.**

**ROBERT A. SIEGEL, Auctioneer**



## CONDITIONS OF SALE

1. The terms of sale are strictly cash on delivery to the highest bidder unless special arrangements have been made prior to the sale.
2. All bids are per lot as numbered in the catalogue unless otherwise announced by the auctioneer at the time of sale. The right is reserved to group two or more lots; to withdraw any lot or lots from the sale, or to act in behalf of the museum. The auctioneer shall regulate the bidding and in the event of any dispute his decision shall be final.
3. Any lot, the description of which is incorrect is returnable, but only within five days of receipt and in any case it must be received by the museum within four weeks from the date of the auction. All disputed lots must be returned intact as received and the following lots may not be returned for any reason whatsoever: Lots containing ten or more stamps; Lots from buyers who have had the opportunity to examine them before the sale; Lots described as having defects or faults may not be returned because of faults. No illustrated lots may be returned because of centering, margins or other factors shown in the illustration.
4. Successful bidders, unless they are known to us or supply acceptable references are expected to make payment in full before the lots are delivered. Mail bidders will be notified of the amount of their purchases. We reserve the right in our sole and absolute discretion to demand cash payment at the time a lot is knocked down to any bidder who has not previously established credit with us or whose account is in arrears. In the event any buyer refuses to pay cash for any lot at the time it is knocked down to him, the auctioneer reserves the right to re-offer the lot immediately for sale to the highest bidder.
5. If the purchase price has not been paid within the time limit, nor lots taken up within seven days from date of sale they may be resold and any loss arising from such sale will be charged to the defaulter.
6. All lots are sold as genuine but should any lot be proved otherwise by written opinion of any competent, responsible authority acceptable to us, immediate refund of the full purchase price will be made, provided that such claim is made within 25 days from date of sale. If claim is not made within this period, no lots are returnable for any reason at any time. So long as we are notified within the 25 day period that an opinion is being sought the matter will remain open until such opinion is rendered. We will not be responsible for any charges incurred by the buyer for expertization fees and costs unless the opinion states the item is not genuine, in which case we will pay a maximum fee of \$10.00 for each such item.
7. Until paid in full, all lots remain the property of the museum.
8. All forwarding charges will be added to the purchase price. The mode of shipment shall be at our option unless we are given specific instructions.
9. The placing of a bid shall constitute acceptance of the foregoing conditions of sale.

## WESTERN POSTAL HISTORY MUSEUM

### DESCRIPTIONS

**EXTREMELY FINE:** The finest, condition for noteworthy, outstanding copies.

**VERY FINE:** (V. F.) In prime condition such as to satisfy the requirements of particular collectors.

**FINE:** (F) Perforations or margins do not touch design on issues after 1890 but in some cases may just touch in earlier issues. If used, fairly light cancellation.

**VERY GOOD:** (V. G.) Generally nice appearance but margins or perforations may cut in slightly.

**GOOD:** Average off-centering or fairly attractive with slight defects.

★★★ Mint, never hinged.  
★★ Mint, hinged.  
★ Unused, no gum.

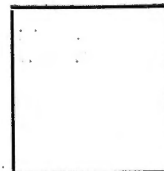
○ Used.  
FDC First day cover.

**SCOTT CATALOGS USED:** 1974 edition, Part I.  
1973 edition, Parts II, III and U. S. Specialized.

# SPECIAL SALE

February 24, 1974

## BID SHEET



WESTERN POSTAL HISTORY MUSEUM

Box 4864

Tucson, Arizona 85717

Please purchase for me at your auction to be held **February 24, 1974**, the lots named below, the prices annexed being my limit on each lot. I agree to remit for purchases in accordance with the **Conditions of Sale** and return no lots later than three days after receipt.

REFERENCES PLEASE  
(if unknown to us)

SIGNED

.....

.....

.....

.....

ZIP

Lot	Bid	Lot	Bid	Lot	Bid

**VALUATIONS**  
Upon request, estimate of value furnished on any lots in this auction.







# VOLUNTEER ORGANIZATION WESTERN POSTAL HISTORY MUSEUM

OF THE ARIZONA HISTORICAL SOCIETY

949 East Second Street

Tucson, Arizona 85719

Wm. L. Alexander	<i>Director</i>
Arthur E. Springer	<i>Associate Director</i>
Albert Friesen	<i>Exhibition Chairman</i>
Mrs. Wm. J. Weaver	<i>Sales Manager</i>
Col. Hugh H. Gardner	<i>Assistant Sales Manager</i>
Anthony Ben	<i>Archivist</i>
Otto Yag	<i>Auction Chairman</i>
James Gentry	<i>Comptroller</i>
Attorney James M. Murphy	<i>Legal Advisor</i>
Jerrold M. Lyons, C.P.A.	<i>Financial Advisor</i>
Marvin R. Cone	<i>Field Representative</i>
Dr. Quintus Fernando	<i>Chief Curator</i>
Mrs. A. K. Williamson	<i>Curator, Research</i>
Hillard R. Frey, Jr.	<i>Curator, Territorial Collections</i>
Clark Moore	<i>Curator, U. S. Postage Collection</i>
Joseph N. Sparks	<i>Curator, R. P. O. Collection</i>

## PHILATELIC EDUCATION DEPARTMENT

### *Advisory Council*

Mrs. A. K. Williamson, M.A.  
Quintus Fernando, Ph.D., F.R.I.C.  
E. Lendell Cockrum, Ph.D.  
William H. Wallace, B.A.  
Mrs. R. A. Nelson, B.E.  
Mrs. John Ashwood, B.E.

### *Dean*

### *Associate Dean*

*Instructors:* Mrs. Edwin Craw, B.E.  
Mrs. Ted Hnghes, M.E.  
Mrs. Dorothy Kennedy

*Preparators:* Mrs. Eileen Weisbard

Mrs. Donnie Lee  
Mrs. Evelyn Slavin, M.A.  
Daniel A. Summers, M.E.  
Arthur G. Klein

*The free philatelic education program is part of the regular curriculum in these Tucson elementary schools:*

Mary Lynn School  
Lawrence School

Roosevelt School  
Van Buskirk School

*Special sessions for asthmatic children and other special child groups are held at:*

The House of Neighborly Service

# SPECIAL SALE

Photos from sets or large lots are examples selected from them.

## ARIZONA TERRITORIAL COVERS

- |    |   |   |        |
|----|---|---|--------|
| 1  | ☒ | AMERICAN FLAG, ARIZ. Sep. 29, 1881. Early usage. Beautiful clear double circle. Cover reduced at R into stamp ..... (PHOTO)                       | E. VI  |
| 2  | ☒ | BIGBUG, ARIZ. Jul. 22, 1897. Light clear strike. 2c Red tied. Cover reduced at L, does not affect appearance .....                                | E. VI  |
| 3  | ☒ | BISBEE, ARIZ. Oct 10, 1885. "BISBEE" mostly clear, balance of postmark VF .....   | E. IV  |
| 4  | ☒ | COCHISE, ARIZ. Aug. 28, 1899. PEARCE, ARIZ. Both VF strikes on registry cards. BENSON, ARIZ. Jul. 14, 1898. Excellent strike on postal card ..... | E. V   |
| 5  | ☒ | DOS CABEZOS, ARIZONA, Oct. 11, 1892. Large 32 mm. double circle ties 2c red. VF .....   | E. VII |
| 6  | ☒ | FORT BOWIE, ARIZ. Jan. 21, 1887. Legible "FORT BOWIE". Dates clear and VF. Cover reduced at R into stamp .....                                    | E. VI  |
| 7  | ☒ | GOLDROAD, ARIZ. Aug 18, 1908. Light clear strike on post card ties 1c green. Minor faults at left of humorous picture post card .....             | E. VI  |
| 8  | ☒ | GRANDVIEW, ARIZ. Oct. 12, 1904. Early Usage. Clear strike on picture post card. Year date light, otherwise VF .....                               | E. IV  |
| 9  | ☒ | HARSHAW. Pima Co. Ariz. Sep. 25, 1882. Excellent strike on registry card sent to LA NORIA, ARIZ .....   | E. V   |
| 10 | ☒ | JEROME, ARIZ. Aug. 18, 1898. Clear strike except year date ties 2c Red .....  | E. IV  |
| 11 | ☒ | MC'DOWELL, ARIZONA About 1880. Excellent strike in 24 mm. double circle. 3c green tied. Flap missing .....  | E. VI  |
| 12 | ☒ | SAFFORD, ARIZONA, Sep. 19, 1881. Early usage. 29 mm. bold circle. VF Interesting letter enclosed ..... (PHOTO)                                    | E. VII |
| 13 | ☒ | SHOW LOW, ARIZ. Sep. 8, 1897. Excellent strike. VF ..... (PHOTO)  | E. VI  |
| 14 | ☒ | SHULTZ, ARIZ. Oct 12, 1896. Early usage. Mostly clear strike ties 2c Red. Minor faults. VF appearance .....                                       | E. VII |

## WELLS, FARGO & CO.

- |    |   |         |
|----|---|---------|
| 15 | WELLS, FARGO & CO. EXPRESS DIRECTORY AND SHIPPERS GUIDE. 1884. 395 pages. Lists over 22,000 places west of the Mississippi River, including Alaska, British Columbia and Mexico with shipping instructions. Lists Wells, Fargo offices, post offices and railroads. Xerox copy complete in spiral binding. Wonderful reference and research source book ..... | E. VIII |
|----|---|---------|

## UNITED STATES — 19TH CENTURY

- |    |   |   |      |
|----|---|---|------|
| 16 | ○ | #1 Good used copy. Red cancel. LR corner expertly repaired. Frame lines clear ..... (PHOTO) | 85.  |
| 17 | ○ | #2 Fine 3 margin copy. Red cancel ..... (PHOTO)   | 300. |



18 ○	#7 Fine copy with black Carrier cancel .....	50.
19 ○	#7 & #9 Strip of three, left two stamps are #9, right hand stamp is #7; cut in at bottom, other 3 margins fine .....	100.
20 ☒	#9 Strip of three. Folded letter. Blue MENASHA, WIS. Sep. 17 in circle (1852). Manuscript cancel. Two minor folds in strip. Strip fine to very fine ..... (PHOTO)	E. VIII
21 ★	#9 One cent blue. Good .....	75.
22 ○	#12 Circular PAID cancel. All margins clear. Lower corners expertly repaired. Fine appearance .....	175.
23 ○	#14 Entire design clear. Very Fine. Light cancel .....	50.
24 ○	#15 Three wide margins. Fine. Very light cancel .....	50.
25 ○	#18 Minor crease UR corner. Very fine appearance ..... (PHOTO)	135.
<hr/>		
26 ○	#19 Type Ia Light cancel. Fine ..... (PHOTO)	425.
<hr/>		
27 ○	#29 Perfs cut at left. Otherwise fine. Light cancel .....	52.
28 ○	#31 Perfs cut at top. Three pulled perfs LR corner. Light cancel .....	135.
<hr/>		
A	<b>GOLD MINE GIFT CARTON, Ten Philatelic Pounds of Stamps &amp; Covers, not sold but given to the highest offer of a cash contribution (Tax deductible) to the Western Postal History Museum. The contribution will aid the museum expansion now in progress, together with the successful Philatelic educational program for asthmatic and less advantaged youngsters. This program has started over one thousand children as junior stamp collectors. The highest contribution offer will receive the GOLD MINE. Unsuccessful offers will be carried to Lot B. The same will apply to Lot C and continue to Lot X. Please read Lot Y and Z at the end of the auction for bonus gifts. The GOLD MINES can not be claimed until the end of the auction</b>	
	<b>MINIMUM CONTRIBUTION OFFER</b>	<b>100.</b>
<hr/>		
29 ★★	#69 Beautiful color. Original gum. Fine ..... (PHOTO)	75.
30 ★	#70a Minor thin spots. Slight crease LR corner. Well centered and good color. ....	135.
31 ★	#78b A fine stamp ..... (PHOTO)	50.
32 ★	#79 Essay grilled all over. See Scott footnote. Slight toning on back (PHOTO)	—
33 ○	#85 D. grill. Fine .....	60.
34 ○	#85B Z grill. Blue cancel. Perfs cut in at R. Good .....	65.
35 ☒	#85C Z grill. Small cover. Slight perf tear UL corner. Very fine centering ..... (PHOTO)	250.
36 ○	#86 E grill. Light cancel. Fresh color. Fine .....	32.
37 ○	#91 E grill. Light cancel. Perfs cut at left .....	65.
<hr/>		
38 ★	#95a F grill. Perfs cut at top. Minor thin. Good color ..... (PHOTO)	325.
<hr/>		
39 ★★	#115 G grill. Part OG. Top perfs slightly toned. Fine margins. (PHOTO)	140.
40 ★	#116 G grill. Minor thin but a fine stamp with good margins (PHOTO)	150.
41 ★★	#117 G grill. Part OG. Perfs cut at top. Few perfs with slight toning (PHOTO)	135.
42 ★	#119 Type II. Fresh color. UL corner perf pulled. Minor perf toning (PHOTO)	175.
43 ○	#120 G grill. Clipped perfs at LL but a fine copy ..... (PHOTO)	125.
44 ○	#122 G grill. Perfs cut at R. Rare stamp ..... (PHOTO)	300.

<b>B</b>	<b>GOLD MINE GIFT CARTON. Refer to Lot A for details. This is a gift to the highest offer of a contribution to the Western Postal History Museum</b>		<b>MINIMUM CONTRIBUTION OFFER</b>	<b>100.</b>
45 ★	#126 6c 1875 Re-issue. Poor color. Hinge toning	(PHOTO)		350.
46 ○	#139 Split grill. Points faint as usual. Fine			100.
47 ★★	#165 Fresh color. A desirable stamp. Fine to Very Fine	(PHOTO)		125
48 ★★	#166 Part OG. Small thin. Fine color	(PHOTO)		275.
49 ★★	#224, 225 Blocks of 4. Hinge reinforced. Good			82.
50 ★	#234, 238 Fine. Excellent centering. Slight toning #238			64
51 ★	#240 50c Columbian. One short perf. VF centering	(PHOTO)		100.
52 ○	#242 \$2 Columbian. Light cancel. Very fine	(PHOTO)		140.
53 ★	#243 \$3 Columbian. Very fine	(PHOTO)		500.
54 ★	#245 \$5 Columbian. Regummed. Fine	(PHOTO)		775.
55 ★★	#261 \$1 Perry. Straight edge R. Slight hinge adherence	(PHOTO)		150.
56 ★★	#263 \$5 Marshall. Straight edge R. Minute nick and crease LR corner	(PHOTO)		625.
57 ★	#292 \$1 Trans-Mississippi. Regummed. Vertical crease. Hinge adherence	(PHOTO)		400.
58 ★★	#293 \$2 Trans-Mississippi. Perfs cut top. Thin spot. Good	(PHOTO)		600.

**UNITED STATES — 20TH CENTURY**

59 ★	#299 10c Pan-American. Very fine			43.
60 ★★	#309 Fine. #310 small hinge thin. Fresh color, nicely centered	(PHOTO)		112
61 ★★	#315 Lincoln imperf. Large margins. Fine	(PHOTO)		175.
62 ★★	#348, 349, 351. Vertical coils. Fine-very fine			51.
63 ★★	#369 Lincoln bluish paper. Fine			70.
64 ★★	#373 Hudson-Fulton imperf. Block of 4. Fine+			70.
65 ★★	#385-386 Coils. Very fine: #387-388	★★ Coils. All fine-very fine		110.
66 ★★	#390-395 Coils. Fine-very fine			73.
<b>C</b>	<b>GOLD MINE GIFT CARTON. Refer to Lot A for details. Lot A follows Lot #28. This is a gift for the highest offer of a cash contribution to the Western Postal History Museum.</b>		<b>MINIMUM CONTRIBUTION OFFER</b>	<b>100.</b>
67 ★★	#399-400 5c and 10c Pan-Pacific. Fine-very fine			70.
68 ★★	#400A 10c Pan-Pacific. Very fine	(PHOTO)		77.
69 ★★	#400A Same. Fine. Hinge remnant			77.



70 ★★★ #403 5c Panama-Pacific. Single with Plate #6129. Minor gum damage.  
A fine stamp ..... 65.+

71 ★★ #404 10c Panama-Pacific. Fine ..... (PHOTO) 325.

72 ★★ #407 Block of 4. Slight hinge toning. Fine ..... 72.

73 ★★ #422-423. Bright color. Tiny thins. Good ..... 177.

74 ★★ #439 Bright color. Fine ..... 50.

75 ★★ #440 Minute thin. Fresh color. Good ..... (PHOTO) 170.

76 ★★★ and ★★ #441-447 complete. Fine-very fine ..... 154.

77 ★★ #445 Coil pair. Good ..... (PHOTO) 145.

78 ★★ #446 Coil pair. Fine centering. Some toning ..... 95.

79 ★★ #477 50c Franklin 1917. Fine ..... (PHOTO) 235.

80 ★★ #478 \$1 Franklin 1916. Horizontal gum crease. Otherwise fine (PHOTO) 200.

81 ★★ #479 \$2 Madison 1917. Top perfs just clear. Fine ..... 70.

82 ★★ #505 5c Rose error in block of nine. The error is ★★★ but other stamps are hinged. Also included is ★★★ plate #7942 block of 6 from same plate # as the error, perfs cut in slightly at left ..... (PHOTO) 203.

83 ★★ #523 \$2 Franklin 1918. Dull color. Fine ..... (PHOTO) 145.

84 ★★★ #524 \$5 Franklin 1918. Bright color. Flaw in paper stock caused gum crack. Very fine ..... 60.

85 ★★ #532-35, 534A. Imperf pairs. Slight hinge toning on several. Excellent margins on all ..... 119.

86 ★★ #579 Block of 4, star & Plate #14971. Gum toning. Good ..... 57.

87 ★★ #611 Centerline block of 4. Harding imperf. Very fine ..... 65.

88 ★★ #616 5c Walloon block of 4. Gum disturbed. Slight thins ..... 55.

**D GOLD MINE GIFT CARTON. Same description as Lot A (which follows Lot #28). This is another gift for the highest offer of a cash contribution to the Western Postal History Museum**  
**MINIMUM CONTRIBUTION OFFER 100.**

89 ★★ #630 White Plains Sheet plate #18770. Margin has slight thin and toning. Perf hinge strengthened in one marginal place. About fine ..... 150.

90 ★★ #630 Same but plate #18774. UL corner clipped. Several light creases. Perfs close at R but not cut in ..... 150.

91 ★★ #658, 660-68. Kansas overprints. Usual centering. Good ..... 73.

92 ★★★ #658-79. Kansas-Nebraska overprints complete. Usual centering. Good to Fine ..... 149.

93 ★★ #658-79. Same. Good to Fine ..... 149.

94 ★★ #669-79. Nebraska overprints complete. Good to Fine ..... 76.

95 ★★★ #715 10c Bicentennial. Block of 4. Very fine ..... 22.

96 ★★★ #730-31. Two of each. Plate #21145, 21146, 21159, 21160. Complete plates for this issue. Very fine ..... 87.

97 ★★ #752-771. COMPLETE FARLEY POSITION BLOCKS IN SCOTT H. P. ALBUM. #752-765, 771, all center line blocks, all matched arrow or dash blocks, all plate blocks of 4 or 6 in matched sets (a total of 58 different plate blocks). #766-70 double panes with full gutter. A worthy collection that should be kept intact because of the very low quantities issued for the Farley series. VERY FINE ..... 1,855.

98 ★★★ #834 \$5 Coolidge. Very fine ..... 45.

99 ★★★ #893 10c Alexander Graham Bell. UR plate block of 4 #22632. Very fine ..... 65.

100	★★	#C1 6c 1917. First air mail series. Fine .....	29.
101	★★	#C1-3 Complete first set. #C1 has plate #8900 with gum spot on margin front. All are fine .....	125.+
102	☒	#C2 Roessler "WINGED LETTER" illustrated cover. Chicago post-mark Dec. 11 1918. Small cover. Paper toned. Stamp fine .....	23.+
103	★★★	#C3 A fine copy .....	47.
104	☒	#C3 First trip cover, May 15, 1918, Washington to Philadelphia. Scott listed item. Fine .....	160.
105	☒	#C3 First trip cover, May 15, 1918, Washington to New York. Scott listed item. Fine .....	(PHOTO) 160.
106	★★	#C4-6 Second airmail issue complete. Fine to very fine .....	105.
107	○	#C4-6 Same used. Fine to very fine .....	40.
108	☒	ZEPPELIN FLIGHT COVER (AAMS catalog #Z-75) Los Angeles to Lakehurst, Stamps are #649, 650, C4-6, 11 .....	E. VI
109	☒	ZEPPELIN FLIGHT CARD. (AAMS catalog #Z-75a) Los Angeles to Friedrichshafen. Picture post card of the Graf Zeppelin. Stamps are block of four and single of C5; pair of #648. Fine to very fine .....	(PHOTO) E. VIII
<hr/>			
110	FDC	#C10a LINDBERGH BOOKLET PANE. Long folded envelope. No cachet. addressed. Cleveland Midwestern Philatelic Station cancel tied. Pane very fine with top margin. Envelope intact but toned .... (PHOTO)	275.
<hr/>			
E		<b>GOLD MINE GIFT CARTON.</b> Same description as Lot A (which follows Lot #28). This is another gift for the highest offer of a cash contribution to the Western Postal History Museum	
		<b>MINIMUM CONTRIBUTION OFFER</b>	<b>100.</b>
<hr/>			
111	★	#C13-15 1930 ZEPPELIN SET. Very fine centering. Unused. .....	(PHOTO) 740.
<hr/>			
112	★★★	#C13 65c ZEPPELIN. Well centered. Minor gum adherence (PHOTO)	140.
113	☒	#C13 65c ZEPPELIN. Tied postmark of Newark Air Mail Field Apr. 25, 1930. Stamp is fine .....	(PHOTO) 100.
<hr/>			
114	☒	#C13 65c ZEPPELIN Block of 4. AAMS Z-105c. United States via Germany to Lakehurst. Stamps fine .....	(PHOTO) E. XII
<hr/>			
115	★	#C14 \$1.30 ZEPPELIN. Small crease. Fine centering .....	(PHOTO) 235.
116	☒	#C14 \$1.30 ZEPPELIN. AAMS Z-111a. Lakehurst to Friedrichshafen. Fine centering .....	(PHOTO) 140.
117	☒	#C14 \$1.30 ZEPPELIN. Pair. AAMS Z-105c. U. S. via Germany to Lakehurst. Very fine centering .....	(PHOTO) 280.+
<hr/>			
118	★★	#C15 \$2.60 ZEPPELIN. Lightly hinged. Fine .....	(PHOTO) 365.
<hr/>			
119	☒	#C15 \$2.60 ZEPPELIN. AAMS Z-105c. U.S. via Germany to Lakehurst. Fine .....	(PHOTO) 250.+
<hr/>			
120	★★★	#C18 50c ZEPPELIN. Fine centering .....	50.
121	★★	#C18 50c ZEPPELIN. Slight corner crease .....	50.
122	★★★	#C18 50c ZEPPELIN. Perfs close at L, do not cut in. Fine .....	50.



123 FDC	#C18 50c ZEPPELIN. Three different FDC. New York, Oct. 2, 1933; Miami, Oct. 6, 1933; Chicago, Oct 7, 1933. All Zeppelin flown. Fine to Very fine .....	185.
124 ☒	#C18 50c ZEPPELIN. Miami to Chicago flight. Backstamp is Century of Progress slogan. Fine .....	40.
125 ☒	#C18 50c ZEPPELIN. Pre-mailed from Managua Oct. 18, 1933, franked with Nicaragua #C29b. Flown on Zeppelin from Chicago to Friedrichshafen. Very fine .....	(PHOTO) E. VI
126 ★★★	#C25a, C39a, C51a. Booklet panes. Fine to Very fine .....	30.
127 ★	#E1-SD Red SPECIMEN overprint. Fine .....	45.
128 ★★★	#E10 1916 perf. 10 special delivery. Fine .....	62.
129 ★★★	#J88-97. 1959 postage dues. Block of 70 (10x7) and block of 12 (4x3) of each denomination. Very fine .....	121.
130 ★★	#K1-15 SHANGHAI CHINA surcharges. Fine to very fine (PHOTO)	136.
131 ★★★	#Q1 Plate #6330 block of 6, slight perforation. Also #Q2 ★★ Plate #6340 block of 6. Fine to very fine .....	75.
132 ★★	#Q12 \$1 parcel post. Hinge remnant. Fine .....	75.

---

**F GOLD MINE GIFT CARTON. Same description as Lot A (which follows Lot #28). This is also a gift for the highest offer of a cash contribution to the Western Postal History Museum**

**MINIMUM CONTRIBUTION OFFER 100.**

---

133 ○	#R28c 5c playing card revenue. FREAK. Wide paper fold vertically with no color .....	(PHOTO) ?
134 ○	#RX1, 3-11, 13, 15-22. Distilled Spirits Excise Tax. Not punched. Very fine. Series 1950 .....	219.
135 ○	#RX28-43, 45, 46. Distilled Spirits Excise Tax series 1952. Punched. Very fine .....	101.
136 ○	#RX41 Distilled Spirits Excise Tax. \$1,000 denomination. NOT PUNCHED. Scott shows no price. Very fine .....	?
137 ☒	#U481b Unused entire 1½c color error. Purple color instead of regular brown. Very fine .....	27.
138 ☒	#UXC3 Unused entire 5c air mail postcard. Left border with black instead of blue lozenges. USPSS catalog #5a3Aa. USPSS catalog price .....	75.
139 FDC	Five early First Day Covers #612, #614-616, #617-619, #620-621 and #647-648. All very fine .....	170.
140 FDC	Scarce TAGGED stamps. Blocks of 4 - #1213b, 1240a, 1257a. Line coil pair #1229a. Cacheted, unaddressed. Very fine .....	E. IV
141 FDC	#1295 \$5 Moore, plate block #28766. Addressed label. No cachet. Very fine .....	E. VI
142 FDC	#1365-68, 1376-79, 1387-90. Matched plate blocks on four covers for each, a total of 12 covers. Artcraft. Unaddressed. Very fine .....	E. VII
143 FDC	#1415-18, 1421-22, 1427-30, 1456-59, 1464-67. Matched plate blocks on four covers for each, a total of 20 covers. Artcraft. Unaddressed. Very fine .....	E. VIII
144 FDC	31 covers between #1181/1344. Each cover has 4 matched plate number singles. Cacheted. Unaddressed. Majority are Artcraft. Very fine .....	E. VI
145 FDC	200 covers between #873/1467. Engraved cachets. Unaddressed. Very fine .....	91.+
146 ★★★ & ★★	U. S. Commemorative collection, 1926-65, in Minkus album. 505 different stamps including Washington Bi-cents, Famous Americans, Flags, etc. mounted in acetate. Almost all are Fine to Very fine .....	180.
147 ★★★ & ★★	U. S. plate block collection 1938-50, in Minkus album 132 different plate blocks including Famous Americans, etc. Mounted in acetate. Almost all are Fine to Very fine .....	403.

148 ★★★ & ★★ U. S. plate block collection 1951/66 in two Minkus' albums. 285 different plate blocks including Liberty issue to \$5 except #1031A, 1042A and 1044A. Mounted in acetate. Almost all are Fine to Very Fine ..... (PHOTO) 442.

149 ☒ CONFEDERATE STATES OF AMERICA. #16x1 on overall advertising cover "CHARLESTON HOTEL, D. MIXER, CHARLESTON, S.C." Very Fine Postmaster Provisional stamp well tied. Flap printed "MANUF'D BY W. EAVES, 295 PEARL ST., N. Y." Repaired tear upper L front and flap. Ex-Knapp collection. An exhibition piece. (PHOTO) E. XII

150 ○ HAWAII #9. FIVE CTS. 1861. Fresh color. Pinhole ..... (PHOTO) 90.

151 ☒ HAWAII #42, pair #43. With U. S. postage dues #J16 pair and strip of three. Postmarks "HONOLULU H. I. NOV. 20 3 PM 1890"; "CHARGE COLLECT 10 CENTS"; "T 25 CENTIMES" All stamps tied. Left edge slightly ragged but all stamps intact. Rare Territorial cover (PHOTO) E. XII

G GOLD MINE GIFT CARTON. Refer to Lot A for details (Lot A follows lot #28). This is a gift for the highest offer of a cash contribution to the Western Postal History Museum  
MINIMUM CONTRIBUTION OFFER 100.

UNITED NATIONS

152 ★★★ U. N. #6-9, 11. First issue inscription blocks of six. All very fine or better ..... 48.  
 153 ★★★ U. N. #10. The scarce first issue 50c inscription block of six. Very fine plus ..... 100.  
 154 ★★ U. N. #35-38. Complete charter set. #38 is the first printing. Very fine ..... 140.  
 155 ★★★ U. N. #38. Charter sheet, second printing with retouch. Very fine plus 135.+  
 156 FDC U. N. #35-38. Complete charter set on four FDC. Artmaster. Addressed. Very fine ..... 62.  
 157 FDC U. N. #38. Charter sheet on Fleetwood cover. Very fine ..... 60.  
 158 ★★★ U. N. #C1-7 Air mail inscription blocks of six. Very fine or better .... 42.  
 159 ☒ U. N. #UC1 Entire unused. The scarce first air letter sheet. Very fine 37.  
 160 ★★★ & ★★ U. N. collection on album pages in mounts. #1-150, C1-12 complete including #38. Fine to very fine ..... 288.  
 161 FDC U. N. 62 different FDC between #23/UXC5, including Geneva #15-21. Unaddressed. Cacheted. Very fine ..... 44.  
 162 ★★★ & ★★ 1962 worldwide U. N. MALARIA collection on White Ace pages in mounts. 211 different stamps plus 18 souvenir sheets. Fine to very fine 145.+

BRITISH COMMONWEALTH

163 ○ GREAT BRITAIN #6. 1848 10 pence. Three margin copy. Cut in slightly at bottom. Fine ..... 70.

164 ○ — #74. 1878 ten shilling. Small circle postmark "GLASGOW MAR. 4 82". Extra fine ..... (PHOTO) 200.



165	○	— #141 1902 ten shilling. Light registry cancel. Extra fine .....	40.
166	★★★	— #185-86 1924 Empire Exhibition. Blocks of 4. Extra fine .....	40.
167	★★★	— 1936 UNEXPLODED BOOKLETS. Seven different with Government Numbers 320, 323, 362, 363, 366, 367, 371. Advertisements on booklet covers different in each case. Panes include combinations of Scott #230a, 231a, 232a and 232b. Booklets intact and very fine .....	E. VIII
168	○	AUSTRALIA #132. Sydney harbor bridge 5 shilling. Fine+ .....	90.
169	★★★	— #M1-7 Occupation of Japan 1946 overprints complete in very fine blocks of four .....	106.
170	★★★	BAHRAIN #23-37 George VI overprint 1935. 2 rupee to 25 rupee complete. Eight sets fine to extra fine .....	324.

<b>H</b>	<b>GOLD MINE GIFT CARTON. Same description as Lot A (which follows Lot #28). Another gift for the highest offer of a cash contribution to the Western Postal History Museum</b>	
	<b>MINIMUM CONTRIBUTION OFFER</b>	<b>100.</b>

171	○	BRITISH COLUMBIA #18 1 DOLLAR 1869 Surcharge. Several perfs pulled. Good .....	(PHOTO)	200.
172	○	CANADA #4 Very fine 4 margin 1852 beaver .....		55.
173	○	— #55 Fine 6c Jubilee with very light cancel .....		35.
174	○	— #73, 84. Lightly canceled very fine copies of these top values of two Queen Victoria issues .....		40.
175	★	— #135a Imperf. Entire top stamp and about 1/3 of bottom stamp. Very fine. Scott price for full pair is \$175 .....	(PHOTO)	?
176	★★	— #136-37. 1924 imperf pairs. Wide margins. Fine to very fine .....		42.+
177	★★★	— #173-77 High values of 1930 pictorials. Fine to very fine .....		65.
178	○	— #F-3. 8c Registration. 2 perfs nibbed. Very light cancel. Fine appearing .....	(PHOTO)	85.
179	○	CAPE OF GOOD HOPE #1a 2 fine margins. Minute thin. Good .....		90.
180	○	— #5 Nice margins. Slight tip toning. Fine .....		85.
181	★★	— #6 Design intact, close at bottom left. Minor toning. A fine copy .....	(PHOTO)	250.
182	★	— #12 Excellent margins, minute thin. Lightly canceled. #12a Cut in slightly both sides of left tip. Very light cancel. Bright color on both stamps .....		120.
183	⊠	— #13 on folded letter. Postmarks "CAPE TOWN CAPE COLONY O AU 9 64"; red oval "GRAAFF-REINETT AU 14 1864". Stamp is Very fine, bright color and tied .....	(PHOTO)	E. VIII
184	★	— #14 Excellent margins. Fine color. Ironed slight crease .....		70.
185	○	CEYLON #2 Cut close at L. Light cancel. Good-Fine .....	(PHOTO)	160.
186	○	— #6, 6A. Fine color. Cut close. Good. ....		100.
187	○	— #11. Light cancel. Small crease. Minor thin. Good .....		70.
188	○	— #15 Bluish paper variety. 3 fine margins .....	(PHOTO)	140.
189	★	— #29 Royal Philatelic Society, London, certificate. Good ...	(PHOTO)	300.

<b>I</b>	<b>GOLD MINE GIFT CARTON. Same description as Lot A (which follows Lot #28). Another gift for the highest offer of a cash contribution to the Western Postal History Museum</b>	
	<b>MINIMUM CONTRIBUTION OFFER</b>	<b>100.</b>

190	★★	CYPRUS #153-55, 168-82. Many topicals. Includes £1 George VI and £1 Elizabeth II. Fine to very fine .....	(PHOTO)	52.
191	★★	FALKLAND IS. #10-18 Young Queen Victoria. Good to fine .....		97.
192	★★	GIBRALTAR #144-45 10/- and £1. Very fine .....	(PHOTO)	57.
193	★★	GILBERT & ELLICE IS. #14-25, 40-51, J1-8. Fine to very fine ....		60.

194	★	HONG KONG #6 Pulled perf. Perfs cut at L and bottom. Good .....	140.
195	○	— #25 Clear B62 cancel. Good .....	55.
196	○	— #31-33, 35, 80-84. #84 pinhole. Good to fine .....	94.
197	★★★	— #178-79, 185-92, 194, 196-98. Blocks of four. Fine to very fine ....	53.
198	★	INDIA #96-97. George V. 10 and 15 Rupees. Fine to very fine .....	48.
199	★★★	& ★★ IRELAND. #98, 147-64, 167-81, 188-89. Many desirable topicals. Fine to very fine .....	103.
200	★★	— #106-119. Maps, religion and other topicals. Fine to very fine ....	45.
201	★★★	JORDAN #B1-11. Also B12a the error with "C" and part of "U" missing. Very fine or better .....	75.
202	★★★	& ★★ KUWAIT #C1-4. De Havilland plane. Very fine .....	31.
203	★	MALTA #1 Perfs cut in at bottom. Good .....	200.
204	★★	— #256-62. 1/- to £1 values. Topicals. Baptism of Jesus, etc. Very fine or better .....	51.
205	★	MAURITIUS #31. Perfs cut in at L and top. Minute closed tear. Good	95.
206	○	NATAL #94-96. Edward VII. 5/-, 10/- and £1. Very fine. Light cancels .....	34.
207	★	— #97 Edward VII £1.10. Corner perf. pulled. Otherwise fine (PHOTO)	130.

**J**      **GOLD MINE GIFT CARTON.** Same description as Lot A (which follows Lot #28). A great gift for the highest offer of a contribution to the Western Postal History Museum

**MINIMUM CONTRIBUTION OFFER      100.**

208	○	NEW BRUNSWICK #2. 1851 six pence. Cut in slightly at bottom. Two wide margins. Good to fine .....	200.
209	★	NEWFOUNDLAND #5. All margins clear design. Very fine .....	75.
210	★★	NEW GUINEA #C13. £1 first air mail issue. Very fine .....	45.
211	★★★	NEW ZEALAND #235, 237-41. Blocks of 4. Various topicals. Fine to very fine .....	42.
212	★★★	QUATAR #13-15, 33-36. Oil wells, etc. Very fine .....	26.
213	★★	RHODESIA & NYASALAND #141-55. (#143-B not included). In- cludes £1 Queen Elizabeth II. Fine to very fine .....	27.
214	★★★	SOMALILAND #65-72, plus ★★ #95. All blocks of 4. Map and other topicals. Fine to very fine .....	57.
215	★★★	SO. RHODESIA #81-92. Inscription Blocks of 6. #81 and 82 have wide vertical gutter in center with engraved design. Various topicals. Fine to very fine .....	65.
216	★★★	— #93. Inscription block of 6. 10/-. Balancing rocks topical. Fine to very fine .....	39.
217	★★★	— #94. Inscription block of 6. £1 Queen Elizabeth II. Very fine+	78.
218		Lots 215, 216, and 217 as one lot. Complete set #81-94 .....	182.
219	★★★	1953 Coronations in Rapkin hingeless presentation album. 106 stamps. Very fine .....	60.++

#### GENERAL FOREIGN

220	★	ARGENTINA #160-72, 174-75. 1910 Centenary set. Very fine. #163 included but not counted .....	125.
221	★	— #374-391. 1930 Revolution. Very fine .....	161.
222	★	— #468a, b, c, d. Souvenir sheet pairs and quads. Minute toning on quads, otherwise very fine .....	57.
223	★	— #B-11. National anthem and flag souvenir sheet. Very fine .....	110.

224 ★★★ AUSTRIA #144. 1910 Jubilee Franz Joseph. Extra fine ..... (PHOTO) 160.

225 ★★ #B57-65, B245-51, B260-63. Three semi-postal sets. Gorgeous topicals. Very fine ..... 76.

226 ★★★ — #B260-63, B273-74, 276. Plus ★★ #281-85, 288-93. Beautiful topicals including Lutheran Bible, children, etc. Fine to very fine ..... 86.

**K** **GOLD MINE GIFT CARTON. Same description as Lot A (which follows Lot #28). Another fine gift for the highest offer of a cash contribution to the Western Postal History Museum**  
**MINIMUM CONTRIBUTION OFFER 100.**

227 ○ AZORES #87-92. Top values of Saint Anthony issue. Latin eulogy printed on back of each stamp ..... (PHOTO) 207.

228 ○ BAVARIA #14. 1862 18 Kreuzer. Minute marginal thin. Fine ..... 50.

229 ○ — #15-18, 20. 1867 Imperfs. Excellent margins. Fine to very fine ... 53.

230 ★★ — #25, 69, 73-76, 88-89, 269a. All fine to very fine ..... 84.

231 ★★ BELGIUM #B48-50, 136, 240, 442-46. Topical semi-postals. All Very fine ..... 44

232 ★★ — #B519-20, 528-30, 532-46, 606-10. All topical semi-postals including the Gen. Patton issue. Fine to very fine ..... 105.

233 ○ BRAZIL #2 1843 bullseye with boardwalk margins. Minute thin ..... 55.

234 ○ — #2 Same with 1844 cancel. Minute thin ..... 55.

235 ○ — #3 Good margins. Pinhole. Fine otherwise ..... (PHOTO) 200.

236 ★ — #364-74 Revolutionary issue complete. Fine to very fine ..... 55.

237 ★ — #392-392a. Statue of Christ. Full pane of 32 with all margins. This makes 16 stamps of #392 plus 8 tete-beche pairs of 392a. Fine to very fine ..... 120.++

238 ★ — #393-393a. Statue of Christ. Corner block of 18 (6x3) which makes 6 stamps of #393 plus 6 tete-beche pairs of #393a. Fine to very fine 144.++

239 ★★ — #455-56. Blocks of 4. Waterfall issue. Very fine ..... 61.

240 ★★★ — #496a, 497a, 498a. New York World's Fair 1940 Souvenir sheet complete. Issued without gum. Very fine ..... 52.

241 ★★ — #B1-4 1934 Philatelic Exhibition imperfs in blocks of four. Lightly hinged. Very fine ..... 49.

242 ★★ — #C6A 1927 Air mail 500 Rs on 10 Rs gray. Fine ..... (PHOTO) 165.

243 ☒ — Five ZEPPELIN covers. May 24 & 28, 1930. AAMS #Z-109, Z-109a, Z-109c, Z-110, Z110a, Stamps cataloged in Sanabria, one Z-2, one Z-4, three Z-5. Sanabria catalog ..... 315.

244 ★ — #72a Sanabria. Census issue imperf with top margin. Very Fine Sanabria ..... 50.

245 ★ — #O-14-29. 1913 official issue complete. #O-28 has one short perf, otherwise the set is fine to very fine ..... (PHOTO) 265.

**L** **GOLD MINE GIFT CARTON. Same description as Lot A (which follows Lot #28). Another fine gift for the highest offer of a contribution to the Western Postal History Museum**  
**MINIMUM CONTRIBUTION OFFER 100.**

246 ★★ CAPE VERDE #31-3, 46, 51-2, 56, 58, 68-70, 92-99, 102-11, 182, 183. Fine to very fine ..... 74.

247 ★ CHILE #254, 255, C-124. Three sets of 25 different Natural History topicals. Mounted and described on album pages. Stamps individually separated. Fine to very fine ..... 48.



248	✉	— #C6E on flown cover, with regular #163-164. Rare usage. All stamps tied. Stamps fine to very fine. Cover has some toning. ....	E. VI
249	★	— #C12, C89. Very fine air mails .....	60.
250	FDC	CHINA (Nationalist). #364-67 in blocks of 4. Large map of mainland China with U. S. and Nationalist China flags. Eleven identical covers, large size. Unaddressed. Beautiful display pieces. U. S. Constitution issue. Fine to very fine .....	E. VIII
251	★	COLOMBIAN REP. #339-50, 475-84, C51. Santander centenary set and others. Fine to extra fine .....	115.
<hr/>			
252	★	— #421-36. The very scarce 1935 National Olympics issue complete. Colorful and fine to very fine .....	(PHOTO) 715.
<hr/>			
253	★★★	— #C150-63, 166-74. The LANSA issue complete, etc. fine to very fine .....	75.
254	★★	COSTA RICA #C46-54. 1940 Pan American Health Day issue complete. Slight toning on #C46 & 49. Fine to very fine .....	86.
255	★★	— #C57-66. 1941 Soccer Championship issue complete. Minor toning on low values only. Otherwise very fine .....	(PHOTO) 130.
256	★★	— #C94-102. 1944 San Ramon Centenary issue complete. Very fine .....	77.
<hr/>			
257	★★★	CROATIA #B73-75 in blocks of four IMPERFORATE. Storm Division issue complete. Extra fine .....	E. XI
<hr/>			
258	✉	DENMARK. ZEPPELIN flight cover. AAMS Z-182, South American 1932 Flight. Denmark stamps #C3, 5. Flown from Copenhagen to Friedrichshafen for the flight. Very fine cover .....	E. VI
259	★★	DOMINICAN REP. #142. Scarce 1 peso denomination. Very fine, except for diagonal gum crease .....	75.
260	★	— #407. Independence Centennial presentation sheet. Flag topical. Fine to very fine .....	55.
261	★★★	DUTCH NEW GUINEA #B1-3 in blocks of four. Flood relief semi-postal overprints. Very fine .....	96.
<hr/>			
M		<b>GOLD MINE GIFT CARTON. Same description as Lot A (which follows Lot #28). Again a fine gift for the highest offer of a cash contribution to the Western Postal History Museum</b>	
			<b>MINIMUM CONTRIBUTION OFFER 100.</b>
<hr/>			
262	★	ECUADOR #CO-1-8. 1929 First official air post set. Fine to very fine .....	137.
263	○	EGYPT #C3a, 4 on piece with CAIRO GRAF ZEPPELIN postmark. #C3a overprint error "1951" instead of "1931". Very fine show piece .....	E. VI
264	★★	ERITREA #Q8. Italy parcel post 4 lire overprint. Good .....	42.
265	○	FINLAND #5, 6b, 7, 7b, 8, two 9, two 10. 1860 to 1874 serpentine roulettes. Good to fine .....	111.
266	★	— #7 a few short perms. Good .....	50.
267	✉	FRANCE #2. 1850 15c tied by dotted star cancel. Left margin cut in slightly, other margins OK. Backstamp Paris 30 MARS 52 in double circle .....	(PHOTO) E. XI
268	○	— #37. 1869 5 franc. Perf pulled. Minute corner crease. Very light cancel .....	(PHOTO) 175.
269	○	— #226b. 1925 Philatelic Exhibition single. Very fine .....	35.
270	★★	— #B8. The Lion of Belfort. Hinge adherence. Fine .....	65.
271	★★	— #B27. Industry and agriculture. Fine to very fine .....	55.
272	○	— #C15. 50 franc, monoplane over Paris. Light cancel. Very fine .....	(PHOTO) 85.

*Manning*  
13  
SNOW LOW  
SEP 19  
ARIZ.

RAFFORD  
SEP 19 1891  
ARIZONA.

11  
REGISTER OR  
VALUABLE MAIL

35  
1921  
SERIAL MAIL SERVICE FEE

SERVICE WASH. N.Y. P.M.  
MAY 15  
105  
WESTERN PHILADELPHIA  
MAY 26 1928

20  
*Mr John Taylor*  
*Northwauke*  
*St. Louis*

NEW YORK  
APR 30  
2:30PM  
TRICK ST.  
114  
Paul A. Bloom  
189 Jerome St  
New York N.Y.

109  
AUG 28  
5 P.M.  
AIR MAIL

110  
REGISTER OR  
VALUABLE MAIL

VIA LAKEHURST & GRAF  
ZEPPELIN TO  
FRIEDRICHSHAFEN  
MAY 11  
9-12  
1930  
FIRST  
EUROPE-PAN-AMERICA  
116

113  
MAY 25  
1930  
3 P.M.

117  
VIA FRIEDRICHSHAFEN  
AND GRAF ZEPPELIN  
TO LAKEHURST  
EUROPE-PAN-AMERICA  
118

VIA  
AIR MAIL  
to Miami and with "GRAF ZEPPELIN" to Germany  
OCT 26  
7 AM  
125

Friedrichshafen and  
"GRAF ZEPPELIN" to Lakehurst.  
MAY 6  
10-AM  
1930  
REGISTER OR  
VALUABLE MAIL  
119

149  
*Mr. Mary Mary Smith*  
*Grand...*

119  
Robert  
P.O. Ins.  
Room 21  
Newark,  
U.S.A.

151  
NOV 20  
3 PM  
1890  
35  
CENTIMES  
Mr. Philip Ganges, Jr.  
CHARGE COLLECT 10 CENTS  
Second St. N.W.  
Washington, D.C.

183  
267  
183  
MAY 19  
1930  
GRAFF  
to Water  
Graaff





16



17



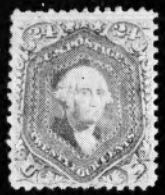
25



26



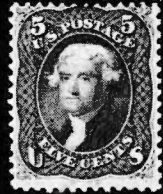
29



31



32



38



39



40



41



42



43



44



45



47



51



48



52



53



54



55



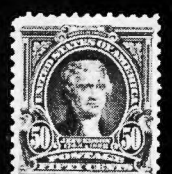
56



57



58



60



61



68



71



77



75



79



80



83



112





82



25367

148



111



130



133



150



115



118



164



175



190



192



207



171



178



181



185



188



189



201



203



208



221



220



224



227



235



255





242



245



268



274



252



272



280



289



287



288



291



308



312



314



321



354



328



344



331



335



330



389



381



384



385



369





394



393



395



400



397



401



402



404



409



413



416



410



412



419



452



453



492



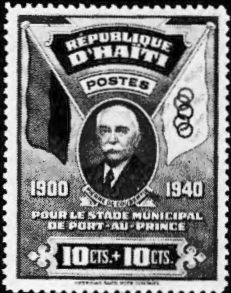
420



449



484



427



454



458



460



489



496



501



505



507



503



512



511



513



273	★★	— #N2-6. 1870 German occupation of Alsace-Lorraine. Good to fine	180.
274	★★	FRENCH EQUAT. AFRICA #C9-16, CB2. 1940 overprinted Afrique Francais Libre, plus surcharge. Fine to Very fine ..... (PHOTO)	170.
275		FRENCH COLONIES PACKET. 4,000 different varieties. Mostly mint with some used. Packet made up some years ago. At that time the retail price was: .....	135.
276		FRENCH COLONIES PACKET. 5,000 different varieties. Same general description as Lot 275. Years ago the retail price was: .....	185.
277	○	GERMAN E. AFRICA #27-9, GERMAN S. W. AFRICA #7. Two dated postmarks. Very fine .....	62.

---

**N**      **GOLD MINE GIFT CARTON, same description as Lot A (which follows Lot #28), another fine gift for the highest offer of a cash contribution to the Western History Museum.**

---

**MINIMUM CONTRIBUTION OFFER      100.**

---

278	★	GERMANY #31-32. 1875 10 and 20 pfennig. Good. Minor faults	105.
279	○	— #65A. 1900 5 Mark Type II. "M" with serifs. Marginal thin spots. Good .....	110.
280	○	—#289a. 1923 50 million mark IMPERF. Wide margins on all sides. Very fine ..... (PHOTO)	75.
281	○	— #B329-30, B337, B341. Famous persons. Very fine	53.
282	⊠	— ZEPPELIN FLIGHT CARDS. AAMS catalog #Z55, 67, 170, 172, 234, 253. Four cards franked with Germany Scott #C36. Two cards franked with Scott #C35. Small Scotch tape pieces on card corners. Stamps very fine .....	E. VIII
283	⊠	— ZEPPELIN FLIGHT COVERS. Six covers. AAMS catalog #Z55, 67, 104, 168a, 172, 173. Covers franked with two Scott #C35, two #C36, and three #C37. Small Scotch tape pieces on corners of envelopes. Stamps very fine .....	E. VII
284	⊠	ZEPPELIN FLIGHT COVER. AAMS catalog #Z155a. Baltic flight, May 12, 1931, drop mail over Copenhagen. Franked with Scott #C38. Vertical fold at far left. Stamp is very fine .....	E. VII
285	★★	— Offices in Morocco #39, 40, 44. Fine to very fine .....	63.
286	○	— Offices in Morocco. #56. 3p. 75c surcharge on 3m. Fine plus .....	50.

---

287	★★	<b>GREECE. #123-126. 1896 Olympics. Fresh color. Off center as usual. O. G. .... (PHOTO)</b>	<b>163.</b>
288	★★	— #127. 1896 Olympics. Fresh color. Off center as usual. O. G. .... (PHOTO)	225.
289	★★	— #128. 1896 Olympics. Fresh color. Fine centering. One perf pulled. O. G. .... (PHOTO)	250.
290	★★	— Lots 287, 288, 289 as one lot. 1896 Olympics complete .....	638.

---

291	★★	— #195-97. 1906 Olympic Anniversary. #197 has gum crease. Fine to very fine. Hinge toning on #196 ..... (PHOTO)	320.
292	★★	— #535-38. 1951 issue commemorating 1900th anniversary of St. Paul's visit to Athens. Very fine .....	47.
293	★★	— #RA-19, 20a, 22a postal tax. Also #N-43 (Icaria). All in blocks of four. Slight gum toning. Good, .....	120.
294	★★	GREENLAND. #17-25. Freedom overprints. Usual printing ink minor smudges. Very fine. ....	91.
295	★★	GUATEMALA. #290-91. General Ubico in 1937. Minor gum toning on #290, otherwise fine. ....	43.
296	★	— #C32-91 complete. 1935-37 Quetzal and plane overprint sets. Fine to very fine. ....	282.

**O**      **GOLD MINE GIFT CARTON, see Lot A which follows Lot #28, a really great gift for the highest offer of a cash contribution to the West-Postal History Museum, ..... MINIMUM CONTRIBUTION OFFER**      **100.**

297 ★	HAITI. #340-48, C14-21, C19a, 21a. Complete Madonna issue including souvenir sheets. #343 and C21 each have a minor crease, otherwise very fine .....	66.
298 ★	— B1, CB1, 2. Coubertin the organizer of modern Olympics. Very fine.	60.
299 ★	— C-4A. Boyd-Lyon flight overprint. Overprint is weak. Good. ....	40.
300 ★★	HONDURAS. #29. Full sheet of 50 with margins. Surcharge is repeated partly in bottom margin. Sheet contains one copy of C29a and one copy of C29b, both are error surcharges. Very slight margin perf separation. A showpiece. Fine to very fine .....	E. VII
301 ☒	— #C155a. Pair IMPERF BETWEEN on commercial cover with other stamp. Rare usage. Very fine .....	E. V
302 ★★	— #C95a. Pair, imperf. ....	25.
303 ★★★	— #C181-86. UPU 75th Anniversary overprints. Very fine or better	43.
304 ★★	— #C222-230. United Nations issue complete. Fine to very fine .....	48.
305 ★★★	Sanabria #63. 6c violet. Red air mail official overprint. Block of four. Friedl certificate. Very fine .....	Sanabria catalog 100+
306 ★★★	HUNGARY #1336, B108, 109, 202a. C35-44, 63a. Colorful topicals including Olympic, religion, mail coach, etc. Very fine or better .....	70.
307	— Three volume collection in acetate mounts. 1871 to 1969 Over 2,600 stamps and 47 souvenir sheets. Early issues mint and used. Later issues mint. HUNDREDS OF MINT TOPICALS. A beautiful collection with many unlisted items .....	1,200+
308 ★★	ICELAND #232-34, 237-39, 273-77, C16, 18-20. Lightly hinged topicals. Fine to extra fine .....	(PHOTO) 88.
309 ★★	INDONESIA. #335-58. "RIS" overprints complete. Very fine (Note: Scott catalog for set is incorrect.) .....	78.
310 ★★★	— #353-58. Top denominations of "RIS" overprints. Very fine or better .....	74.
311 ★★	ITALY #385-6, 395-6, 510-13. Art & architecture, Stradivarius, etc., topicals. Fine to extra fine .....	82.
312 ○	— #439. Unlisted double impression. Very fine .....	(PHOTO) E. V
313 ★★★	— #495-506. Two complete sets of the Centenary pictorials. Fine to extra fine .....	157.
314 ★★	— #518, The scarce Centenary of the Republic issue. Good with faults. ....	(PHOTO) 150.
315 ☒	JAPAN ZEPPELIN flight cover. AAMS catalog #Z-74a. Tokio to Lakehurst Aug. 21, 1929. Very fine .....	E. VI

**P**      **GOLD MINE GIFT CARTON, same description as Lot A (which follows Lot #28), yet another fine gift for the highest offer of a cash contribution to the Western Postal History Museum. .... MINIMUM CONTRIBUTION OFFER**      **100.**

316 ★★	LAOS #C-13. Buddhist temple topical. Very fine + .....	75.
317 ★	LIBYA #B22. Desert oasis & date palms. Fine .....	90.
318 ★★	LIECHTENSTEIN #247-58, 284-6. 19th Century wooden Madonna set. Agriculture topicals set. Extra fine .....	46.
319 ☒	ZEPPELIN flight cover. Stamps C-15-16. AAMS #Z-404a Friedrichshafen to Lakehurst. Very fine .....	E. VI
320 ☒	— ZEPPELIN flight cover front. Stamps C12, 15, 16. AAMS cat. #Z-404a Friedrichshafen to Lakehurst. Stamps very fine .....	E. VI

321	★★	LUXEMBOURG #272-77. United Europe set. Extra fine (PHOTO)	98.
322	○	MEMEL #C1-7. 1921 airmail set complete .....	66.
323	★★	MEXICO #70a. 1868 100c with no period. Faults. Good. A very scarce stamp .....	32.
324	★★	— #353a. Revenue for postage with coupon attached. Minute thin. Good .....	60.
325	○	— #620, 1917 3c. Light cancel. Fine .....	50.
326	★★	— #758. 5 peso of Penny Black set. Minute thin. Fresh and bright ...	45.
327	★★★	— #897A, 955, 961, C-251, 278, 281, 283, 301. Eight complete sheets. Don Quixote, flag, DeGaulle, Queen Juliana, map and other topicals. Very fine .....	E. VIII
328	★	— #C-39c. Air mail error - pair, one without surcharge. Very fine (PHOTO)	E. VIII
329	★★	— #C51-53. Palace of Fine Arts set. Fine to very fine .....	45.
330	★★	— #C54-60. University set to 10 pesos. Lightly hinged. Very fine (PHOTO)	136.
331	★★	— #C93-A. 1939 Sarabia flight overprint. Very fine .....	225.
332	★	— #C103-107. Penny Black set. Fine to very fine .....	75.
333	★	— #O193-94. 1927 5 & 10 peso officials. Fine to Very fine .....	57.
334	★	— #JX-22. 35c Porte De Mar issue. 3 fine margins. Cut slightly at bottom .....	55.

**Q**      **GOLD MINE GIFT CARTON, same description as Lot A (which follows Lot #28,) Again a fine gift for the highest offer of a cash contribution to the Western Postal History Museum**

**MINIMUM CONTRIBUTION OFFER      100.**

335	★★	NETHERLANDS #132-34. Queen Wilhelmina enthroned. Very fine plus (PHOTO)	141.
336	★★	NICARAGUA #C254-56. Stamp Centenary set of 1941. Fine to very fine .....	62.
337	★★	— Sanabria #82a, 84a. Overprint date error, "1832" instead of "1932. Sanabria catalog	110.
338	★★	PANAMA #278-97, C21-32. Postal Congress & U. P. U. sets. #279 small thin. C-21 minor faults. A few have hinge adherence .....	94.
339	✉	PARAGUAY ZEPPELIN flight cover. Cancellation in large circle reads, "CORREO AEREO ASUNCION - PARAGUAY 24. 3. 37. 16 - 19". Registered. Large cover has backstamp of Miami, Florida, April 1, 1937. Paraguay stamps #C80-83, 103, all in blocks of four; plus C79-83 in singles, plus other stamps. Very fine and unusual cover .....	E. IX
340	★★	PERSIA #978-82, 985-89. Fish and other topicals. Fine to very fine	45.
341	★	PERU #347-51, 356-73. High values of Centenary set of 1936 plus 1936-37 definitive set complete. Fine to very fine .....	98.
342	★	— #C16-39 except #C33. 1936-37 airmail set. Many industrial topicals and Saint Rosa of Lima. Fine to very fine .....	87.
343	★★	PORTUGAL #C1-10. First airmail set complete. Very fine+	93.
344	★★	REUNION #C32-41. CFA surcharges on French airmails. Lightly Hinged. Very fine .....	(PHOTO) 126.
345	★★	RUSSIA #C38-39. Stratostat Balloon. Fine to very fine .....	60.
346	★	SALVADOR #C24-27, C73-83. Father Delgado set, Coffee, University set. Fine to very fine .....	54.
347	★	— #C36-40. Sport topicals. Fine to very fine .....	95.
348	○	— #C41-45. Sports topicals. Fine .....	63.
349	★	— #C69-70. Stamp Centenary set. Very fine .....	49.
350	○	— C83a. University Centenary souvenir sheet with first day cancel. Very fine + .....	E. IV



351 ★★★ SAN MARINO #304a. The scarce UPU souvenir sheet showing an old time stage coach. One crease thru vertical perfs, otherwise fine .... 180.

---

R      **GOLD MINE GIFT CARTON, same description as Lot A (which follows Lot #28), another fine gift for the highest offer of a cash contribution to the Western Postal History Museum,**  
**MINIMUM CONTRIBUTION OFFER      100.**

---

352 ★★ SIAM #8. 1885 1 Tical surcharge. Dark gum. Fine ..... 60.  
353 ★★ — #71-72. 2 Att. and 3 Att. of 1899. Minor gum toning, otherwise fine 105.  
354 ★ SPAIN #64, 72. 1865 imperfs. Very fine ..... (PHOTO) 137.  
355 ★★ — #235, 237, 283. #283 part O. G. with gum adherence. Good to fine 104.  
356 ☒ — ZEPPELIN flight cover. AAMS Catalog #Z107a. Seville via round trip flight to Friedrichshafen. Very fine ..... E. VI  
357 ★★ SURINAM #123-26, 128-31, 142-63, C17. Nice selection. Fine to very fine ..... 56.  
358 ○ SWITZERLAND #10a. Two large margins. Others cut in. Good .... 52.  
359 ○ — #12. A fine four margin copy ..... 50.  
360 ★★ SYRIA. #232-50, 325-27, 330, 337. Arabian horse topicals, etc. Very fine ..... 58.  
361 ★★ TIMOR #260-69. Gorgeous flower set complete. Fine to very fine .... 43.  
362 ★★ TOGO #7-11, 13, 159-60, B1-6. Kaiser's yacht, radium discoverers M. & Mme. Curie, etc. Very fine ..... 78.  
363 ★★ URUGUAY #384-85. Top values of Artigas issue. Fine to very fine .... 70.  
364 ★ — #394-409. 1930 Independence Centenary set. Good to fine ..... 51.  
365 ★ — #447-52, C14-21, C61-62. 1928 Albatross airs. 1933 Albatross triangles. Fine to very fine ..... 83.  
366 ★ — #C27-60, C36A, C60A. Complete Pegasus set. #C37 and 44 are good, all others fine to very fine ..... 224.  
367 ★ — #C-105. Top value of set ..... 57.  
368 ★ — Sanabria #72. \$1.20 Pegasus punched two stars. Only 70 issued. Sanabria 75.  
369 ★★ VATICAN #47-54. Press Conference 1936 set complete. Fine to very fine ..... (PHOTO) 106.  
370 ★★ — #61-67. 1939 Interregnum issue. Good to fine ..... 54.  
371 ★ VENEZUELA #C68-74, 1937-38 overprints. Also #C164-80, 1943 overprints. #C68-74 fine to very fine. Others good to very fine ..... 151.  
372 1,000 different mounted in approval book. Made up many years ago. Mint and used ..... RETAIL PRICE 165.  
373 ★★★ WALLIS & FUTUNA #94-124, J24-36. 1943 France Libre overprints. Good to very fine ..... 75.

---

374      **WINDOW FRONT COUNTRY PACKETS. These were made to order many years ago and would probably command higher prices to day. This lot has 143 different packets from AFGHANISTAN TO WUR-TEMBERG. 22,500 different stamps Retail value marked on packets      946.**  
375      **Same description. 145 different packets from AFRICA to WALLIS & FUTUNA. Some duplication with lot #374. 24,100 different stamps. Retail value marked on packets      968.**  
376      **Same description. 143 different packets from ALBANIA to VIET NAM. Some duplication with lots #374 and 375. 23,425 different stamps. Retail value marked on packets      911.**

---

S **GOLD MINE GIFT CARTON**, same description as Lot A (which follows Lot #28), another fine gift for the highest offer of a cash contribution to the Western Postal History Museum. Incidentally, did you read Lots Y and Z at the end of the auction? Good bonus Lots.

**MINIMUM CONTRIBUTION OFFER 100.**

**EXCELLENT LOTS BY COUNTRY**

**Mounted on Scott Specialty H. P. album pages. AIR MAILS AT THE END.**

The world wide collection which comprises the rest of our auction has no stamps later than 1955 and very few after 1950. The great majority of these lots are predominantly mint, only a few countries contain used stamps. The stamps are lightly hinged and include plenty of good value pictorial and topical sets and singles in mint condition. The Philatelic Appraisal Committee of the Arizona Philatelic Rangers carefully examined these lots and estimated a fair bid amount for each lot as shown. Scott catalog value is shown in even dollars in [brackets].

**U. S. POSSESSIONS**

- |     |  |         |
|-----|--|---------|
| 377 | CANAL ZONE 1904-1949. 128 stamps. [\$245] .....                      | E. VIII |
| 378 | DANISH WEST INDIES 1866-1917. 37 stamps. [\$133] .....               | E. VII  |
| 379 | HAWAII 1864-1899. 42 stamps. [\$242] .....                           | E. IX   |
| 380 | PHILIPPINES including Republic. 1864-1955. 304 stamps. [\$157] ..... | E. VI   |

**BRITISH EMPIRE**

- |     |  |         |      |
|-----|--|---------|------|
| 381 | GREAT BRITAIN 1840-1953. 521 stamps. [\$590] ..... | (PHOTO) | E. X |
|-----|--|---------|------|

**BRITISH AMERICA**

- |     |  |         |         |
|-----|--|---------|---------|
| 382 | ANTIGUA 1863-1953. 67 stamps. [\$137] .....  | E. VI   |         |
| 383 | BAHAMAS 1882-1954. 67 stamps. [\$148] .....  | E. VII  |         |
| 384 | BARBADOS 1861-1950. 120 stamps. [\$300] .....  | (PHOTO) | E. IX   |
| 385 | BERMUDA 1880-1955. 76 stamps. [\$126] .....  | (PHOTO) | E. VI   |
| 386 | BRITISH GUIANA 1881-1946. 64 stamps. [\$88] .....  | E. V    |         |
| 387 | BRITISH HONDURAS 1872-1953. 93 stamps. [\$111] .....   | E. VI   |         |
| 388 | NEW BRUNSWICK 1860-1863. [\$43]; NEWFOUNDLAND 1860-1947. [\$164]; NOVA SCOTIA 1860-1863. [\$10]; PRINCE EDWARD ISLAND 1862-1872 [\$34]. TOTAL 91 stamps [\$252]. .....     | E. VIII |         |
| 389 | CANADA 1859-1899. 51 stamps. [\$282] .....   | (PHOTO) | E. VIII |
| 390 | — 1901-1954. 162 stamps. [\$336] .....   | (PHOTO) | E. IX   |
| 391 | CAYMAN ISLAND 1900-1950. 67 stamps. [\$91]; DOMINICA 1883-1953. 62 stamps. [\$56]; FALKLAND IS. DEPENDENCIES 1946-1954. 62 stamps. [\$46]. TOTAL 191 stamps. [\$193] ..... | E. VII  |         |
| 392 | GRENADA 1883-1950. [\$107]; JAMAICA 1871-1953. [\$124]. TOTAL 200 stamps. [\$232] .....  | E. VIII |         |
| 393 | LEEWARD IS. 1890-1954 [\$94]; MONTSEERRAT 1884-1908 [\$6]; SAINT CHRISTOPHER 1882-1884. [\$10]; SAINT KITTS-NEVIS 1903-1953 [\$81]. TOTAL 167 stamps [\$192] .....         | (PHOTO) | E. VII  |
| 394 | ST. LUCIA 1883-1953. [\$23]; TOBAGO 1882-1886 [\$7]; TURKS IS. & TURKS & CAICOS 1867-1953 [\$131]. TOTAL 111 stamps. [\$161] .....   | E. VII  |         |
| 395 | ST. VINCENT 1871-1953. 98 stamps [\$190] .....   | (PHOTO) | E. VII  |

- 396 TRINIDAD 1864-1909 [\$48]; TRINIDAD & TOBAGO 1913-1953 [\$95].  
 TOTAL 108 stamps. [\$143] ..... E. VI  
 397 VIRGIN IS. 1866-1953. 82 stamps. [\$169] ..... (PHOTO) E. VII

#### BRITISH AFRICA

- 398 ASCENCION 1922-1946 [\$61]; BASUTOLAND 1933-1953 [\$5] BECHU-  
 ANALAND AND PROTECTORATE 1892-1947 [\$27]; CAPE OF  
 GOOD HOPE 1855-1902 [\$35]; E. AFRICA & UGANDA 1903-1912  
 [\$18]; GAMBIA 1880-1953 [\$63]. TOTAL 229 stamps. [\$221] ..... E. VII  
 399 GOLD COAST 1884-1953. [\$82]; KENYA, UGANDA & TANGANYIKA  
 1921-1953 [\$23]. LAGOS 1874-1904. [\$22]; MAURITIUS 1849-1953  
 [\$99]. TOTAL 279 stamps. [\$228] ..... E. VII  
 400 NATAL 1861-1904 [\$24]; NIGERIA 1914-1953 [\$34]; NO. NIGERIA  
 1900-1912 [\$11]; NO. RHODESIA 1925-1953 [\$96]; NYASALAND  
 PROT. 1908-1953 [\$22]; RHODESIA 1890-1910 [\$28]. TOTAL 224  
 stamps [\$217] ..... (PHOTO) E. VII  
 401 ST. HELENA 1889-1953 [\$80]; SEYCHELLES 1954 [\$15]; SIERRA LEONE  
 1876-1946 [\$36]; SOMALILAND PROT. 1902-1953 [\$76]; SOUTH  
 AFRICA 1910-1954 [\$73]; TOTAL 422 stamps. [\$282] ..... (PHOTO) E. VIII  
 402 SO. NIGERIA 1901-1912 [\$13]; SO. RHODESIA 1924-1953 [\$52]; SO.  
 WEST AFRICA 1923-1953 [\$52]; SUDAN 1897-1954 [\$45]; SWAZI-  
 LAND 1889-1947 [\$15]; TANGANYIKA 1921-1931 [\$31]. TOTAL 381  
 stamps [\$211] ..... (PHOTO) E. VII  
 403 ZANZIBAR 1896-1952. 90 stamps. [\$117] ..... E. V

#### BRITISH ASIA

- 404 BANGKOK 1883 [\$10]; BURMA 1938-1952 [\$72]; HONG KONG 1862-  
 1954 [\$130]. TOTAL 231 stamps. [\$213] ..... (PHOTO) E. VI  
 405 INDIA 1854-1953. 246 stamps. [\$199] ..... E. VI  
 406 INDIAN STATES 1901-1949. 192 stamps. [\$234] ..... E. VI  
 407 MALAYA - FEDERATION AND STATES. 1893-1953. 413 stamps. [\$307] E. VII  
 408 IRAQ 1923-1953 [\$96]; JORDAN 1923-1953 [\$53]; MALDIVE IS. 1909-  
 1953 [\$13]; MESOPOTAMIA 1918-1922 [\$16]; MUSCAT (OMAN) 1944-  
 1953 [\$22]. TOTAL 413 stamps. [\$202] ..... E. VI  
 409 NEPAL 1881-1931 [\$21]; PAKISTAN 1947-1955 [\$13]; PALESTINE 1918-  
 1933 [\$81]; STRAITS SETTLEMENTS 1867-1945 [\$136]; SINGAPORE  
 1948-1953 [\$10]. TOTAL 345 stamps. [\$263] ..... (PHOTO) E. VI

#### BRITISH EUROPE

- 410 CYPRUS 1880-1912 [\$13]; GIBRALTAR 1886-1950 [\$62]; IRELAND  
 1922-1953 [\$99]; MALTA 1863-1953 [\$111]. TOTAL 231 stamps. [\$286]  
 (PHOTO) E. VIII

#### BRITISH OCEANIA

- 411 AUSTRALIA FORERUNNERS: NEW SOUTH WALES 1854-1906 [\$18];  
 QUEENSLAND 1865-1907 [\$31]; SO. AUSTRALIA 1856-1906 [\$24];  
 TASMANIA 1853-1912 [\$34]; VICTORIA 1850-1912 [\$38]; WEST  
 AUSTRALIA 1865-1912 [\$24]. TOTAL 259 stamps [\$172] ..... E. VI  
 412 AUSTRALIA 1914-1955. 226 stamps [\$530]. Outstanding lot ..... (PHOTO) E. XI  
 413 BRITISH SOLOMONS 1907-1946 [\$51]; BRUNEI 1907-1952 [\$33]; FIJI  
 1878-1954 [\$63]; GILBERT & ELLICE 1911-1937 [\$9]; LABUAN 1892-  
 1901 [\$33]; NEW GUINEA 1925-1939 [\$38]; NEW HEBRIDES 1908-  
 1953 [\$35]. TOTAL 297 stamps. [\$264] ..... (PHOTO) E. VIII



414	NEW ZEALAND 1862-1953. 196 stamps. [\$171] .....	E. VI
415	NEW ZEALAND TERRITORIES: AITUTAKI 1903-1926 [\$27]; COOK IS. 1892-1949 [\$88]; NIUE 1902-1952 [\$33]; PENHRYN IS 1902-1929 [\$9]; SAMOA 1877-1953 [\$39]. TOTAL 234 stamps [\$198] .....	E. VII
416	NORFOLK IS. 1947 [\$9]; NO. BORNEO 1886-1939 [\$60]; PAPUA 1907-1936 [\$45]; SARAWAK 1869-1950 [\$32]; TONGA 1886-1953 [\$97]. TOTAL 267 stamps [\$245] .....	(PHOTO) E. VII

<b>T</b>	<b>GOLD MINE GIFT CARTON</b> , same description as Lot A (which follows Lot #28), again a fine gift for the highest offer of a cash contribution to the Western Postal History Museum, <b>MINIMUM CONTRIBUTION OFFER</b>	<b>100.</b>
----------	---	-------------

### SOUTH AND CENTRAL AMERICA

417	ARGENTINA 1858-1949. 540 stamps. [\$252] .....	E. VI
418	BOLIVIA 1866-1951. 250 stamps. [\$141] .....	E. V
419	BRAZIL 1850-1950. 500 stamps [\$465] .....	(PHOTO) E. VIII
420	CHILE 1854-1954. 338 stamps. [\$223] .....	(PHOTO) E. VII
421	COLOMBIA 1865-1947. 457 stamps. [\$194] .....	E. V
422	COSTA RICA 1863-1948. [\$159]; HONDURAS 1878-1945 [\$29]. TOTAL 400 stamps. [\$188] .....	E. V
423	CUBA 1855-1948. 422 stamps. [\$305]. Includes #E1 mint, fine and other U. S. issues .....	E. VII
424	DOMINICAN REP. 1879-1949. 359 stamps. [\$222] .....	E. VI
425	ECUADOR 1865-1952. 636 stamps. [\$311]. (Includes \$182 catalog value of mint air mails.) .....	E. VI+
426	GUATEMALA 1871-1949. 359 stamps. [\$251] .....	E. VII
427	HAITI 1881-1946. 242 stamps [\$176] .....	(PHOTO) E. VI
428	MEXICO 1856-1950. 551 stamps. [\$376] .....	E. VII
429	PANAMA 1887-1949. 257 stamps. [\$205] .....	E. VI+
430	PARAGUAY 1879-1946. 517 stamps. [\$229]. (Airmails catalog \$144). .....	E. VI
431	PERU 1862-1951. 398 stamps. [\$202] .....	E. VI+
432	SALVADOR 1867-1948. 353 stamps. [\$117]. (Many Seebecks not counted or cataloged) .....	E. IV
433	URUGUAY 1866-1946. 422 stamps. [\$170] .....	E. VI
434	VENEZUELA 1865-1948. 325 stamps. [\$297] .....	E. VII

### GENERAL FOREIGN

(Worldwide airmail collection at end)

435	AFGHANISTAN 1907-1942 [\$52]; CHINA (Nationalist) 1885-1948 [\$81]; KOREA 1885-1949 [\$45]; LAOS 1951-1952 [\$18]; MANCHUKUO 1932-1937 [\$31]; SHANGHAI 1889-1893 [\$20]; SIAM 1883-1953 [\$118]; TANNU TUVA 1926-1932 [\$18]; TOTAL 627 stamps. [\$386] .....	E. VII
436	EUROPE. ALBANIA 1913-1945 [\$76]; BOSNIA & HERZEGOVINA 1879-1918. [\$81]; CROATIA 1941-1944 [\$38]; JUGOSLAVIA 1918-1955 [\$74]; MONTENEGRO 1874-1943 [\$23]; SERBIA 1869-1943 [\$52]; UPPER SILESIA 1920-1922 [\$16]. TOTAL 966 stamps. [\$362] .....	E. VII
437	AUSTRIA 1850-1955 Regular issues. 353 stamps [\$406] .....	E. VIII
438	AUSTRIA 1914-1948 Semi-postals only. 156 stamps. [\$180] .....	E. VI
439	— 1850-1952 Airs, dues, etc. 496 stamps. [\$297] .....	E. VII
440	BALTIC STATES. CENTRAL LITHUANIA 1920-1922 [\$15]; ESTONIA 1919-1940 [\$24]; LATVIA 1918-1940 [\$57]; LITHUANIA 1915-1940 [\$39]. TOTAL 455 stamps. [\$135] .....	E. V

441	BELGIUM 1849-1949. Regular issues. 280 stamps. [\$302] .....	E. VII
442	BELGIUM 1910-1948. Semi-postals only. 259 stamps. [\$220] .....	E. VII
443	BELGIUM 1870-1949 [\$178]; RUANDI URUNDI 1922-1948 [\$65]. Belgium contains airs, dues, etc. (rest of above collection) TOTAL 351 stamps. [\$243] .....	E. VI

**U GOLD MINE GIFT CARTON, same description as Lot A (which follows Lot #28). Yet another great gift for the highest offer of a cash contribution to the Western Postal History Museum.**

**MINIMUM CONTRIBUTION OFFER 100.**

444	BULGARIA 1881-1949. Over 500 stamps. [\$179] .....	E. V
445	CONGO 1886-1950. 275 stamps. [\$256] .....	E. VII
446	CZECHOSLOVAKIA including Bohemia Moravia and Slovakia. 1919-1949. 888 stamps. [\$229] .....	E. VI
447	DENMARK 1851-1950. 318 stamps. [\$347] .....	E. VIII
448	DUTCH INDIES 1870-1947. 263 stamps. [\$348] .....	E. VIII
449	EGYPT 1867-1954. 416 stamps. [\$348] .....	(PHOTO) E. VIII
450	FINLAND & KARELIA 1860-1949. 324 stamps. [\$217] .....	E. VI+

**FRANCE & COLONIES**

451	FRANCE 1849-1907. Postage only. 109 stamps. [\$482] .....	E. VIII+
452	— 1920-1954. Postage only. 474 stamps. [\$434] .....	(PHOTO) E. IX
453	— 1922-1954. Semi-postals. 169 stamps. [\$198] .....	(PHOTO) E. VII+
454	— 1859-1948. Airs, dues, etc. 332 stamps. [\$226] .....	(PHOTO) E. VII+
455	ALGERIA 1924-1955. 381 stamps. [\$211] .....	E. VI
456	ANDORRA 1931-1949 [\$30]; CAMEROUN 1916-1954 [\$79]; CHAD 1924- 1930 [\$20] COMORO IS. 1897-1954 [\$12]; DAHOMEY 1901-1942 [\$92]. TOTAL 576 stamps. [\$236] .....	E. VI
457	FRENCH COLONIES [\$20]; FRENCH CONGO [\$18]; FRENCH GUIANA [\$26]; FRENCH GUINEA [\$72]; FRENCH INDIA [\$57]; FRENCH OCEANIA [\$51]; FRENCH SUDAN [\$59]; All from 1892-1950. TOTAL 868 stamps. [\$303] Plenty of mint topical sets, semi-postals, etc. ....	E. VII
458	FRENCH EQUATORIAL AFRICA 1936-1954. 252 stamps. [\$258] (PHOTO)	E. VII
459	FRENCH MOROCCO 1891-1955. 447 stamps. [\$247] .....	E. VI
460	FRENCH W. AFRICA 1943-1954 [\$16]; GABON 1904-1932 [\$55]; GUADELOUPE 1889-1947 [\$46]; INDO-CHINA 1892-1946 [\$47]; ININI 1932-1941 [\$10]; IVORY COAST 1892-1941 [\$132]. TOTAL 816 stamps. [\$308] .....	(PHOTO) E. VII
461	MAURITANIA 1906-1940 [\$61]; MAYOTTE 1892-1912 [\$5]; MIDDLE CONGO 1907-1933 [\$72]; NEW CALEDONIA 1892-1952 [\$54]. TOTAL 468 stamps. [\$193] .....	E. VI
462	LEBANON 1924-1948 [\$87]; MADAGASCAR 1895-1952 [\$104]; MAR- TINIQUE 1892-1947 [\$38]. TOTAL 614 stamps. [\$230] .....	E. VI
463	NIGER TER. 1921-1942 [\$46]; ST. PIERRE & MIQUELON 1891-1952 [\$81]; SENEGAL 1892-1941 [\$64]; SYRIA 1930-1946 [\$47]. TOTAL 625 stamps [\$239] .....	E. VI
464	REUNION 1885-1954 [\$138]; SOMALI COAST 1894-1952. [\$141]. TOTAL 632 stamps. [\$280] .....	E. VI+
465	TOGO 1916-1954 [\$71]; UBANGI 1915-1930 [\$23]; UPPER SENEGAL & NIGER 1906-1914 [\$12]; UPPER VOLTA 1920-1931 [\$21]; WALLIS & FUTUNA 1920-1952 [\$25]. TOTAL 524 stamps [\$155] .....	E. V
466	TUNISIA 1888-1954. 396 stamps. [\$223] .....	E. VI



**GERMANY, STATES & COLONIES**

467	BADEN 1851-1868 [\$100]; BRUNSWICK 1863-1865 [\$46]; HAMBURG 1864-1866 [\$57]; HANOVER 1851-1858 [\$9]. TOTAL 32 stamps. [\$212]	E. V+
468	BAVARIA 1849-1920. 316 stamps. [\$202]	E. V
469	HELIGOLAND 1873-1876 [\$16]; LUBECK 1863-1865 [\$110]; MECK-LENBURG-SCHWERIN 1864 [\$70]. TOTAL 16 stamps. [\$196]	E. V
470	OLDENBURG 1867 [\$38]; SAXONY 1851-1863 [\$52]; SCHLESWIG-HOL-STEIN [\$41]; WURTTENBERG 1859-1923 [\$81]. TOTAL 202 stamps. [\$213]	E. V+
471	PRUSSIA 1850-1867. 20 stamps. [\$220]	E. V+
472	GERMANY NORTHERN & SOUTHERN DISTRICTS 1852-1870. 51 stamps. [\$218]	E. V+
473	GERMANY Excluding semi-postal and airs. 1872-1921. 129 stamps. [\$297]	E. VII
474	GERMANY & OFFICES IN OTHER COUNTRIES. 1921-1948. 626 stamps. [\$398]	E. VIII
475	GERMANY. Semi-postal and air post. 1919-1942. 145 stamps. [\$204]	E. VI
476	GERMAN COLONIES. CAMEROONS 1897-1906 [\$29]. CAROLINE IS. 1899-1915 [\$17]. GER. E. AFRICA 1896-1906 [\$29]. GER. N. GUINEA 1897-1915 [\$27]. GER. S. W. AFRICA 1897-1906 [\$30]. KIAUCHAU 1900 [\$6]. MARIANA IS. 1900-1918 [\$6]. MARSHALL IS. 1900-1915 [\$5]. SAMOA 1900-1915 [\$12]. TOGO 1900-1909 [\$6]. TOTAL 125 stamps. [\$171]	E. VI+
477	GERMAN AREA MISC. ALLENSTEIN 1920 [\$9]. DANZIG 1920-1939 [\$92]. MEMEL 1920-1923 [\$31]. SAAR 1920-1927 [\$21]. TOTAL 460 stamps. [\$154]	E. V

---

V      **GOLD MINE GIFT CARTON**, see Lot A which follows Lot #28  
for retails, one more desirable gift for the highest offer of a cash con-  
tribution to the Western Postal History Museum

**MINIMUM CONTRIBUTION OFFER      100.**

---

478	GREECE 1861-1900. Postage only. 49 stamps. Includes eight stamps of the 1896 Olympics. [\$283]	E. VII
479	— Postage 1901-1947. Postage dues, etc., plus EPIRUS, THRACE & CRETE 1875-1952. 353 stamps [\$450]	E. VIII
480	HUNGARY 1871-1952. Regular issues, dues, occupation, etc. 1,080 stamps. [\$499]	E. VIII
481	— Semi-postals and air mails. 1913-1952. 286 stamps. [\$208]	E. VI
482	ICELAND 1876-1952. 186 stamps. [\$288]	E. VIII

**ITALY, STATES & COLONIES**

483	MODENA 1852-1857. [\$46]; SARDINIA 1855-1861 [\$28]; TWO SICILIES 1858-1861 [\$78]. TOTAL 15 stamps. [\$152]	E. IV
484	ITALY 1863-1942. Postage only. 386 stamps. [\$475]      (PHOTO)	E. IX
485	— 1862-1951. Semi-postals, dues, etc. 257 stamps [\$252]	E. VII
486	— CASTELLORIZO, CYRENAICA, ERITREA, ETHIOPIA, ITALIAN COLONIES, ITALIAN E. AFRICA, LIBIA 399 stamps [\$216]	E. VI
487	— OLTRA GIUBA 1925-1926 [\$7]; SOMALILAND 1903-1934 [\$104]; TRIESTE 1947-1948 [\$10]; TRIPOLITANIA 1923-1934 [\$74]. TOTAL 233 stamps. [\$197]	E. VI
488	LIBERIA 1880-1947. 350 stamps. [\$353]	E. VIII
489	LIECHTENSTEIN 1912-1950 117 stamps. [\$225]      (PHOTO)	E. VII
490	LUXEMBOURG 1852-1949. 369 stamps. [\$231]	E. VII



491	NETHERLANDS 1852-1952. 403 stamps. [\$384] .....	E. VIII
492	NETHERLAND ANTILLES 1873-1948. 90 stamps [\$221] .....	(PHOTO) E. VII
493	NORWAY 1856-1954. 334 stamps. [\$272] .....	E. VII+
494	PERSIA 1876-1946. 531 stamps. [\$124] .....	E. IV
495	POLAND 1918-1955. 594 stamps [\$244] .....	E. V+
496	PORTUGAL 1856-1949. 551 stamps. [\$387] .....	(PHOTO) E. VIII
497	— COLS. ANGOLA 1870-1935 [\$75]; AZORES 1868-1932 [\$107]; CAPE VERDE 1877-1938 [\$51]; GUINEA 1881-1938 [\$74]; HORTA 1892-1905 [\$5]; INHAMBANE 1902-1914 [\$22]; KIONGA 1916 [\$20]; LOURENCO MARQUES 1894-1920 [\$36]; MACAO 1903-1942 [\$39]; MADEIRA 1871-1929 [\$16]. TOTAL 764 stamps. [\$448] .....	E. VIII
498	— COLS. MOZAMBIQUE & MOZAMBIQUE CO. 1877-1946 [\$109]; NYASSA 1897-1898 [\$11]; PONTA DELGADA 1892-1905 [\$7]; PORTUGUESE AFRICA 1898-1919 [\$4]; PORTUGUESE CONGO 1894-1915 [\$18]; PORTUGUESE INDIA 1876-1946 [\$59]; QUELIMANE 1913-1914 [\$26]; ST. THOMAS & PRINCE 1869-1939 [\$57]; TETE 1913-1914 [\$20]; TIMOR 1885-1938 [\$78]; ZAMBESIA 1894-1917 [\$18]. TOTAL 874 stamps. [\$412] .....	E. VIII
499	ROMANIA 1862-1949. 826 stamps. [\$399]. Lots of topicals .....	E. VIII
500	ROMANIA 1928-1952. Air post and semi-postals. 50 stamps. [\$83] .....	E. IV
501	RUSSIA 1865-1937 postage only. 417 stamps. [\$369] .....	(PHOTO) E. VIII
502	— Rest of collection. Includes postage 1938-1955, semi-postals, airs, etc. Ten North Ingermanland stamps. TOTAL 559 stamps. [\$362]. Topical galore .....	E. VIII
503	SAN MARINO 1892-1949. 191 stamps. [\$178] .....	(PHOTO) E. VI+

**W**      **GOLD MINE GIFT CARTON**, see Lot A which follows Lot #28 for details, again a fine gift for the highest offer of a cash contribution to the Western Postal History Museum

**MINIMUM CONTRIBUTION OFFER      100.**

504	SPAIN 1850-1931. Postage only. 265 stamps. [\$319] .....	E. VIII
505	— Rest of collection. Postage 1935-1950, semi-postals, etc. 274 stamps. [\$373] .....	(PHOTO) E. VIII
506	SPANISH COLONIES. AGUERA 1922 [\$9]; ANDORRA 1929-1948 [\$10]; CAPE JUBY 1940-1944 [\$32]; PORTO RICO 1881-1898 [\$27]; SPANISH GUINEA 1909-1935 [\$17]; SPANISH MOROCCO 1903-1949 [\$69]. TOTAL 308 stamps. [\$167] .....	E. VI
507	SURINAM 1873-1953. 97 stamps. [\$135] .....	E. VI
508	SWEDEN 1855-1948. 359 stamps. [\$551] .....	E. IX
509	SWITZERLAND 1850-1949. 427 stamps. [\$689] .....	(PHOTO) E. X
510	TURKEY 1865-1950. 834 stamps. [\$304] .....	E. VII
511	VATICAN 1933-1955. 141 stamps. [\$270] .....	(PHOTO) E. VII

#### AIR MAIL COLLECTION ON ALBUM PAGES

Principally desirable mint sets and singles. A few used. Nothing later than 1935 issues.

512	PART I. AFGHANISTAN to GREECE. 328 stamps [\$397] ....	(PHOTO) E. IX+
513	PART II. GUADELOUPE to IT. SOMALILAND. 230 stamps [\$326] .....	(PHOTO) E. VIII
514	PART III. JORDAN to LEBANON. 139 stamps. [\$407] .....	E. IX
515	PART IV. LITHUANIA to SIAM. 321 stamps. [\$338] .....	E. VIII
516	PART V. SPAIN to YEMEN. 378 stamps. [\$566] .....	E. X

**X**      **GOLD MINE GIFT CARTON**, your last chance to contribute a cash contribution to the Western Postal History Museum and receive this surprising gift. Read carefully the next two items.  
**MINIMUM CONTRIBUTION OFFER      100.**

**Y**      **BONUS GOLD MINE GIFT CARTON.** This one is an added free bonus to the one who contributed the largest dollar amount for any ONE of the Gold Mine Lots from Lot A through Lot X. In case of a tie, the auctioneer will hold a drawing of those tied to determine the winner

**Z**      **ANOTHER BONUS GOLD MINE GIFT CARTON.** Each alphabetical letter from A to X will be placed in "Uncle Bill's" Stetson. Miriam Siegel will be blindfolded to pick one letter. The one who obtained that Gold Mine will receive Lot Z as a bonus.

**END OF SALE — THANK YOU**

The Arizona Philatelic Rangers and the Western Postal History Museum express grateful appreciation to all who participated in this auction and especially to:

President Gordon D. Paris of the Tucson Federal Savings & Loan Association for providing the beautiful Territorial Club.

Ranger Robert A. Siegel for his generosity in printing this auction catalog and conducting the floor auction. Our thanks also to his good wife Miriam for her cooperation and assistance.

To the members of the Rangers and other donors who kindly provided the material that has made this the finest auction ever held in Arizona.

To the many volunteer workers who devoted many hours to the preparation of the auction lots together with all the countless details pertaining to this auction.

# MEMORANDUM

---



I've been a member of The Arizona Philatelic Rangers for many years and am proud to be a "Sheriff" in that progressive organization. I could fill this entire page detailing the fine work they have done in promoting Postal History research, in preparing exhibits, in establishing a Postal History Library but, most of all, for their fine work of philatelic education for asthmatic and disadvantaged youngsters. Their Program in this area has the enthusiastic support of school officials and educators and I am sure that a generous part of the proceeds of this auction will be devoted to that worthy program.

To me, it is a privilege and a pleasure to make my contribution in the form of donating the catalogue for this auction. The fine material offered bespeaks the generosity of the many contributors and the entire project deserves your whole-hearted support.

Far better for you to attend the auction in person, but if you are not able to be there, send in your bids, and make them large and generous. If you want to be sure that you are a buyer in the sale and a good Samaritan as well, you can send me your bids which I will handle personally. Unlike my own sales, I will welcome BUY BIDS for this worth-while and deserving cause.

Robert A. Siegel