



# UNITED STATES STAMPS

The Collection of Dr. Drew B. Meilstrup

Offered by His Order



AT PUBLIC AUCTION

Wednesday, May 2nd, 1973 at 1:00 P. M.

*Robert A. Siegel*

AUCTION GALLERIES, INC.

120 East 56th STREET

NEW YORK CITY, N. Y. 10022

Tel.: (212) 753-6421



**MAY 2nd, 1973**

**ROBERT A. SIEGEL AUCTION GALLERIES, Inc.**

**New York, N. Y. 10022**

**Tel.: 753-6421 (Area Code 212)**

Please purchase for me at your auction to be held **May 2nd, 1973**, the lots named below, the prices annexed being my limit on each lot. I agree to remit for purchases in accordance with the **Conditions of Sale** and return no lots later than three days after receipt.

REFERENCES PLEASE  
(if unknown to us)

**SIGNED**

New York State residents kindly include  
County in address.

County

[illegible]

Upon request, estimate of value furnished on any lots in this auction.



Wednesday, May 2nd, 1973 at 1:00 P.M.

## UNITED STATES

### POSTMASTERS' PROVISIONALS



1

9

- 1 **Baltimore, Md., 5c Black on Bluish (3X3).** Clear margins three sides. Shows frame line at left, neat ms. "X" cancels, tiny gum soak in top margin, almost imaginary, Fine for this rare stamp ..... (Photo) 2,500.00
- 2 R **New Haven, Ct., 5c Red on White, 5c Dull Blue on White, 1932 Reprints (8XU1R, 8XU4R).** Only 260 of each printed, Very Fine ..... E. VI
- 3 **New York, N. Y., 5c Black (9X1).** Ample to Large Margins, Blue ms. cancel, small tear, otherwise Fine ..... (Photo) 100.00
- 4 **New York, N. Y., 5c Black (9X1).** Large margins L. & B., touched to trifle in other sides, Magenta ms. cancel, Very Good ..... 100.00
- 5 **New York, N. Y., 5c Black (9X1). Horiz. Pair, Top Frame Line Double,** Pos. 36-37, Ample to Huge Margins except right stamp (Pos. 37) cut in, Neat Blue ms. cancels, right stamp creased, other, (with the big D. T.) Very Fine, Attractive ..... (Photo) 275.00+
- 6 ★ **New York, N. Y., 5c Black, Without Signature (9X1d).** Ample to Large Margins, tiny translucent speck, faint overall toning, otherwise Fine, Rare ..... (Photo) 500.00
- 7 ★ **Providence, R. I., 5c Black (10X1).** Large Margins except a trifle close U. L. corner, Fresh, Fine ..... (Photo) 75.00
- 8 ★ **Providence, R. I., 5c Black (10X1). B. R. Margin Pair,** Fresh, Very Fine ..... (Photo) 160.00
- 9 **St. Louis, Mo., 10c Gray Lilac (11X5).** Margins nearly all around, partly touched at R., Neat ms. cancel, small faults, Fine Appearance (Photo) 1,300.00

*LOTS ON VIEW APRIL 30th, MAY 1st*

*10 A.M. - 3 P.M. & MORNING OF SALE*

# 1847 ISSUE

10 ★	<b>5c Brown (1).</b> Ample to Large Margins, Fresh, small closed scissor cut at top, otherwise Very Fine ..... (Photo)	450.00
11	<b>5c Dark Brown (1a).</b> Large Margins except just in at one tiny spot T. R., Deep Rich Color, Bold Blue grid, Fine ..... (Photo)	75.00
12	<b>5c Brown (1).</b> Large Margins except just touched at B., Bold Blue Town pmk., tiny corner crease, otherwise Fine ..... (Photo)	75.00
13	<b>5c Brown (1).</b> Margins All Around, Red Grid, small faults, Very Fine Appearance ..... (Photo)	70.00
14	<b>5c Red Brown (1).</b> Large Margins except touched at top, Blue pmk., light crease, Fine Appearance ..... (Photo)	75.00
15	<b>5c Red Brown (1).</b> Large margins to just touched, Bold Black Grid, small thin spots, Attractive ..... (Photo)	80.00
16	<b>5c Dark Brown (1a). Double Transfer at Top,</b> Ty. A, Pos. 80R, Large to Huge Margins, Magnificent Deep Color, neat ms. cancel, Extremely Fine & Handsome ..... (Photo)	E. VII
17	<b>5c Deep Red Brown (1). Double Transfer,</b> Ty. B Pos. 90R, Large Margins except close to barely in at R., Marvelous Color, Fine Impression, Neat 'Paid' & ms. cancels, Attractive & Scarce ..... (Photo)	E. V
18	<b>5c Brown (1). Horiz. Pair,</b> Ample to Large Margins except barely touched at B. of right stamp, Pretty Color, light Blue grid cancels, couple small filled thins, Fine-Very Fine Appearance ..... (Photo)	200.00
19	<b>5c Brown (1). Horiz. Pair,</b> Ample to Large Margins except left stamp touched at L., cleaned ms. cancel, Fairly attractive ..... (Photo)	60.00+
20	<b>10c Black (2). "Post Office" Double Transfer,</b> Pos. 31R, clear to Large Margins, Bold Red Grid, microscopic nick at T., really trivial, otherwise Very Fine, Very Scarce ..... (Photo)	450.00
21	<b>10c Black (2).</b> Margins slightly in to clear, Large at L., Red Cancel, Fine, ex Farouk ..... (Photo)	250.00
22	<b>10c Black (2).</b> Barely touched to Large Margins, light, partially struck Numeral in Blue, small filled thin & creases, Fine Appearance (Photo)	275.00
23	<b>10c Black (2).</b> Huge margins to trifle cut in, Incredib'le Intense Color, Bold Square Grid in Red, tiny corner crease, Attractive ..... (Photo)	250.00
24	<b>10c Black (2). Double Transfer "A",</b> Pos. 1R, Three Large Margins, clear at L., Bold Red Grid, tiny ms. offset on back, Fine & Scarce (Photo)	350.00
25	<b>10c Black (2). Double Transfer</b> Lower Right "X", Pos. 2R, irregular margins from touching to huge, on small piece tied by ms. cancel, Scarce ..... (Photo)	E. VII
26	<b>10c Black (2).</b> Ample to Large Margins, Red & ms. cancels, creased, Fine Appearance ..... (Photo)	90.00
27 ★	<b>5c Red Brown, Reproduction (3).</b> Three Large Margins, cut in at R., tiny thin spot ..... (Photo)	235.00
28 ★	<b>10c Black, Reproduction (4).</b> Large Margins All Around, faint, minute pin head thin speck, otherwise Very Fine ..... (Photo)	325.00



3



5



6



7



8



10



11



12



13



16



17



18



20



21



22



23



24



28



31



32



33



36



37



39



40



41



42



43



44



48

# 1851 ISSUE



29

30

- |      |  |
|------|--|
| 29   | <b>1c Blue, Ty. I, Pos. 7R1E (5).</b> Large Margins All Around showing bit of next stamp at Right, Part of Red "Boston" & "Paid" Cancels, vertical crease breaks through, Very Fine Looking Example of this Rare & Elusive Stamp ..... <b>(Photo)</b> 6,000.00 |
| 30   | <b>1c Blue, Ty. I, Pos. 7R1E (5).</b> Margins barely cut in to just clear, Rich Color, light town pmks., small flaws, Reasonably Attractive Example of this always desirable Rare Stamp with P. F. Certificate ..... <b>(Photo)</b> 6,000.00                   |
| 31   | <b>1c Blue, Ty. Ia (6).</b> Large Margins All Around incl. Part of Next Stamp at R., Light Town pmk., sealed tear, Very Fine Appearance .... <b>(Photo)</b> 650.00   |
| 32 ★ | <b>1c Blue, Ty. II (7). Horiz. Pair,</b> Ample to Large Margins except barely touched at T. on left stamp, Fresh, Fine-Very Fine ..... <b>(Photo)</b> 275.00   |
| 33   | <b>1c Blue, Ty. II (7).</b> Margins All Around, Town pmk., Very Fine <b>(Photo)</b> 25.00  |
| 34   | <b>1c Blue, Ty. II (7).</b> Cracked Plate, Pos. 23L2, cut way in at left, Blue cancel, Good position piece ..... 100.00  |
| 35   | <b>1c-12c 1851 Issue (7, 9, 11, 14-15, 17).</b> #14 Blue Town, faults, some trivial, Fine-Very Fine Appearance ..... 179.50  |
| 36 ★ | <b>1c Blue, Ty. IIIa (8A).</b> Pos. 86R4, Three Large Margins, trifle in at T., Fresh, Pretty Color, minute cut in margin not touching design, otherwise Fine ..... <b>(Photo)</b> 325.00  |
| 37 ★ | <b>1c Blue, Ty. IIIa (8A). Triple Transfer, One Inverted,</b> Pos. 81L1E, barely touched to Large Margins incl. Part L. Sheet Margin, creases & very light toned specks, otherwise Very Fine, Scarce ..... <b>(Photo)</b> 500.00                               |
| 38   | <b>1c Blue, Ty. IIIa (8A).</b> Margins All Around, Blue Cancel, line at top weak, wide break at B., small corner repair, Very Fine Looking ..... 160.00  |
| 39 ★ | <b>1c Blue, Ty. IV (9).</b> Recut Once at T., Twice at B., Margins All Around, Fresh Color, small corner crease, otherwise Very Fine ..... <b>(Photo)</b> 80.00  |
| 40 ★ | <b>1c Blue, Ty. IV (9).</b> Recut once at T., Twice at B., Margins slightly cut in to Large, Fine ..... <b>(Photo)</b> 80.00   |
| 41 ★ | <b>1c Blue, Ty. IV (9).</b> Recut once at T., twice at B., Barely touched to Large Margins incl. bit of next stamp at B., Fresh, Fine ..... <b>(Photo)</b> 80.00   |
| 42 ★ | <b>1c Blue, Ty. IV (9). Double Transfer, One Inverted,</b> Pos. 71L1L, Margins Three Sides, trifle in at top, Deep Rich color, part o. g., Fine <b>(Photo)</b> 185.00  |

43 ★	1c Blue, Ty. IV (9). Triple Transfer, One Inverted, Pos. 81L1L, just touched to Large Margins, Fresh, Large Part o. g., Fine ..... (Photo)	185.00
44	1c Blue, Ty. IV (9). Recut Twice at B., Pos. 8R1L, just clear to Large Margins incl. T. Sheet Margin, Fresh Color, town pmk. with serified letters, Very Fine ..... (Photo)	30.00
45	1c Blue, Ty. IV (9). Recut once at T., Pos. 93R1L, Margins All Around, town pmk., Very Fine .....	23.50
46	1c Blue, Ty. IV (9). Recut Once at T., Once at B., Pos. 64L1L, Margins All Around, removed & replaced on piece, tied by Clear "Columbia, S.C." pmk. in Blue, Very Fine .....	23.50
47	1c Blue, Ty. IV (9). Double Transfer, One Inverted, Pos. 71L1L, Large Margins Three Sides, trifle in at T., Bold "Jul. 4" Town Pmk., Fine ....	60.00
48	1c Blue, Ty. IV (9). Cracked Plate, Pos. 61R1L, Large Margins Three Sides incl. L. Pane Margin, except a bit at T., light Blue pmk., Fine (Photo)	70.00
49 ☐	1c Blue, Ty. IV (9). Block, Large Margins All Around, neat ms. cancel, small tear & thin spot, otherwise Very Fine, Beautiful Appearance (Photo)	350.00
50	1c Blue, Ty. IV (9). Three, All Have at least three margins, Diff. Recut Varieties, one with Red Grid, Fine .....	90.00+
51 ★	3c Orange Brown (10). Margins to barely touched, Pretty Color, light soiling & sealed tear, Fine Appearance .....	200.00
52 ★☐	3c Dull Red (11). Block, o. g., Worn Plate, crease & thin spot, Fairly attractive .....	150.00
53	3c Red (11). Three, Major Double Transfers, Cracked Plate Pos. 92L1L, 66R2L, 84L5L, small faults or margins cut, Scarce Lot .....	110.00
54 ☐	3c Red (11). Block, margins cut in to large incl. part L, sheet margin, ms. & Red Town pmks., small faults, Fine Appearing Block .....	150.00
55	1c-3c 1851-57 Issue (11, 20, 26). Three Major Cracked Plate Varieties, Pos. 84L5L, 23L2, 71L18 respectively, some perfs. clipped on #20, others small faults Fine-Very Fine Appearance, Very Scarce Lot .....	210.00
56	5c Red Brown (12). Large Margins Three Sides, irregular at L. just touching one spot, Blue "Cincinnati" pmk., tiny faint thin spot, Fine Appearance (Photo)	160.00
57 ★	10c Green, Ty. I (13). Ample Margins to a trifle in at B., Rich Color, P. F. Certificate states . . . "genuine Ty. I, . . . staining on back", Attractive Appearance, Rare Unused .....	(Photo) 1,750.00
58 ★	10c Green, Ty. I (13). Ample to Large Margins on Three sides incl. bit of next stamp at R., bit cut in at L., P. F. Certificate states, . . . "genuine . . . damaged & regummed," Rare Unused .....	(Photo) 1,750.00
59	10c Green, Ty. I (13). Double Transfer, Pos. 100R, Large Margins All Around, Rich Color, ms. cancel, strong Stitch Watermark, crease, Very Fine Appearance .....	(Photo) 250.00
60	10c Green, Ty. II (14). Double Transfer, Pos. 51L, Close to Large Margins, Fresh Color, Neat Town pmks, small faults, Fine Appearance .....	70.00
61 ☒	10c Green, Ty. III (15). Large Margins All Around, ms. cancel, tied by tiny toned specks, lightly struck Red "U. States" in arc, on small embossed lady's cover to Canada West, cover faulty, stamp Very Fine .....	75.00

62	<b>10c Green, Ty. II, III (14-15). Vertical Strip of Three, Ty. III, II, III,</b> margins touch or cut in except at top, Pretty Color, Town pmks., Attractive & Scarce .....	175.00+
63	<b>10c Green, Ty. IV (16). Recut T. &amp; B.,</b> Pos. 64L Ample to Large Margins, light town pmks., small thin spot, Very Fine Appearance .....	(Photo) 425.00
64	<b>10c Green, Ty. IV (16). Recut T. &amp; B.,</b> Pos. 64L, Margins All Around, generous grid cancels, light crease, Fine appearance with P.F. Certificate .....	(Photo) 425.00
65 ★	<b>12c Black (17).</b> Small margins, just in two sides, Fresh, Very Good .....	275.00
66	<b>12c Black (17). Horiz. Pair,</b> margins cut in at T., Huge other three sides, town pmks., Fine .....	(Photo) 100.00
67	<b>12c Black (17). Horiz. Pair,</b> Large Margins except a trifle in at two spots, Intense Color, Red & Black cancels, very faint corner crease, otherwise Fine .....	100.00
68	<b>12c Black (17). Horiz. Pair,</b> town pmk., margin added at T., crease in one, Extremely Fine Looking .....	100.00

### 1857 ISSUE

69 ★	<b>1c Blue, Ty. I (18).</b> Fresh, light crease, Fine Appearance .....	(Photo) 200.00
70	<b>1c Blue, Ty. I, II (18, 20). Horiz. Combination Strip of Three,</b> Pos. 62-64L12 (Ty. I-II-I), neat ms. cancel, few short perfs. & rounded corner, otherwise Fine, Scarce .....	325.00+
71	<b>1c Blue, Ty. I, II, IIIa, IV (18, 20, 22-23).</b> Used, faults or perfs. touch ...	277.50
72 ★	<b>1c Dark Blue, Ty. Ia, IIIa (19, 22). Vertical Combination Strip of Three</b> with B. Sheet Margin, IIIa-IIIa-Ia, Deep Rich Color, tiny pinhole, light creases & two tiny toned specks in the two Ty. IIIa, centered to the R., still an Attractive Example of this Rare Combination, Cats. \$1470.00 as singles .....	(Photo) —
73	<b>1c Blue, Ty. II (20).</b> Tied on small piece by Bold Town pmk., Very Fine .....	(Photo) 40.00
74	<b>1c Blue, Ty. II (20). Major Cracked Plate, Pos. 13L2,</b> Gorgeous Color, tied on small piece by neat "Lowell, Ms." Town pmk., centered to R., tiny toned specks, otherwise Fine .....	110.00
75	<b>1c Blue, Ty. III (21).</b> Plate 4, Well Centered, town pmk., creases, Very Fine Appearance .....	(Photo) 150.00
76	<b>1c Blue, Ty. III (21).</b> Pos. 99R2, used, defective, with P.F. Certificate, Very Rare, much more so than the imperforate .....	(Photo) 2,000.00
77	<b>1c Blue, Ty. IIIa (22).</b> Bold Blue Grid, Fine .....	43.50
78	<b>1c-12c 1857 Issue (22, 24, 26, 29, 35-36).</b> Includes Unused o. g. #24, used pair, Block #26, used & unused #35, pair #36, left stamp double frame line, also single #36 with Bold Numeral "3" in Blue, faults or perfs. touch .....	318.50
79	<b>1c Blue, Ty. IV (23).</b> Bold Town pmk., light crease, centered to top, Attractive .....	70.00
80	<b>1c Blue, Ty. IV (23).</b> Cracked Plate Pos. 58R1L, light pmk., small sealed tear & corner crease, otherwise Fine, Scarce .....	225.00

81	✉	<b>1c Blue, Ty. IV (23).</b> Double Transfer, One Inverted, Pos. 71L1L, tied by Neat "Chicago, Ill., Oct. 14, 1857" pmk., on unsealed circular envelope, Fine .....	150.00+
82	★	<b>1c Blue, Ty. V (24).</b> "Earring" Flaw, Pos. 10L9, Well Centered, Wide R. Straddle Margin with Full Center Line, Fresh, small part o. g., small thin spots, Very Fine Appearance .....	60.00
83		<b>1c Blue, Ty. V (24).</b> Three, incl. Curl on Shoulder, Double Transfer at Top, Horiz. Dash in Hair, faint crease in one, otherwise Fine, Scarce Lot .....	66.00
84	★	<b>3c Rose, Ty. I (25). Horiz. Pair,</b> Fresh, o. g., light crease, perfs. clipped at B., Well Centered, Scarce .....	230.00
85	★田	<b>3c Red, Ty. IIa (26a). Block,</b> Fresh, o. g., Rich Color, Very Fine for this Very Scarce Block .....	300.00 (Photo)
86		<b>5c Brick Red (27).</b> Well Centered, Bold Town pmk., faults, Very Fine Appearance .....	125.00 (Photo)
87	★	<b>5c Red Brown (28).</b> Fresh, Bright Color, sealed tear, some perfs. blunted by scissor separation, otherwise Fine, with P. F. Certificate ....	525.00 (Photo)
88	★	<b>5c Red Brown (28).</b> Deep Rich Color, small corner crease, filled thin, small surface rubbings, Fairly Attractive .....	525.00 (Photo)
89	★	<b>5c Red Brown (28).</b> Perfs. clipped at R., perfs. cut in two other sides, Rare Unused .....	525.00 (Photo)
90		<b>5c Red Brown (28).</b> Used, small faults, Fine Looking .....	75.00
91		<b>5c Red Brown (28).</b> Light town pmk., small thin spot, Fine Appearance .....	75.00
92		<b>5c Indian Red (28A).</b> Marvelous Color, town pmk., faults, Very Fine Looking .....	300.00 (Photo)
93	★	<b>5c Brown, Ty. I (29). Vertical Strip of Three,</b> Fresh, part o. g., Deep Rich Color, small bits of paper on back, perfs. clipped at right, still Attractive & Scarce .....	575.00 (Photo)
94		<b>5c Deep Orange Brown (30).</b> Rich Color, light town pmk., tiny faults, otherwise Fine, scarce .....	125.00
95	★	<b>5c Brown, Ty. II (30A).</b> Fresh, Deep Color, tiny corner faults, otherwise Fine .....	90.00
96		<b>5c Brown, Ty. II (30A). Vertical Pair,</b> Rich Color, Bold Grids in Red, tiny trivial surface rub on one, centered to top, Fine & Handsome (Photo)	80.00+
97		<b>10c Green, Ty. I (31).</b> Bold Frameless Grid pmk., small faults, Fine Appearance .....	135.00
98		<b>10c Green, Ty. I (31).</b> Curl in Left "X", Pos. 99R, few short perfs., centered to top .....	150.00 (Photo)
99		<b>10c Green, Ty. I (31). Horiz. Pair,</b> pale shade, ms. cancel, centered far to T. R., Scarce .....	325.00
100	✉	<b>10c Green, Ty. II, III (32-33). Horiz. Combination Strip of Three Ty. III-III-II,</b> tied by Neat "Washington, D. C." pmk., "Boston, Br. Pkt, "Paid," Boxed "Aachen, Franco" in Red, small sealed cover tear affects Ty. II stamp, otherwise Very Fine example of the scarce misplaced transfer	110.00+

101	<b>10c Green, Ty. IV (34). Recut at B.,</b> Pos. 54L, Rich Color, town pmk., perfs. at B. blunted by scissor separation, couple short perfs., otherwise Fine ..... <b>(Photo)</b>	275.00
102	<b>10c Green, Ty. IV (34). Recut at B.,</b> Pos 76L, light cancel, crease & small tear, centered to T.L., Attractive Appearance ..... <b>(Photo)</b>	275.00
103 ★田	<b>10c Green, Ty. V (35). Block,</b> Fresh, o. g., single short perf., otherwise Fine ..... <b>(Photo)</b>	200.00
104 ★	<b>12c Black, Pl. III (36b).</b> Fresh, Part o. g., centered slightly to T., Fine ..... <b>(Photo)</b>	52.50
105 ★	<b>24c Gray (37a).</b> Fresh & Very Fine ..... <b>(Photo)</b>	115.00
106 ★	<b>24c Gray (37a).</b> Fresh, faults, Very Fine Appearance ..... <b>(Photo)</b>	115.00
107	<b>24c Gray (37a).</b> Wide Margin at R., Bold Dark Red Grid, Fine ..... <b>(Photo)</b>	65.00
108 ★	<b>30c Orange (38).</b> Pale Shade, Fine ..... <b>(Photo)</b>	120.00
109	<b>30c Orange (38).</b> Bold town pmk., Fine ..... <b>(Photo)</b>	70.00
110	<b>30c Orange (38). Recut at B.,</b> Pos. 52L1, Perfectly Centered, Rich Color, Neat Town pmk. in Blue, tiny inconsequential nick in top margin, very trivial, otherwise Extremely Fine, Very Scarce Variety ..... <b>(Photo)</b>	200.00
111	<b>30c Orange (38). Horiz. Pair,</b> pale color, rather heavy grid cancels, centered to R. ....	250.00
112 ★	<b>90c Blue (39).</b> Fresh, small faults, Fine Appearance ..... <b>(Photo)</b>	400.00

#### 1857 REPRINTS

113 ★	<b>1c Bright Blue, Reprint (40).</b> Small faults, Attractive & Scarce <b>(Photo)</b>	175.00
114 ★	<b>5c Orange Brown, Reprint (42).</b> Small faults, Well Centered, Scarce, despite slight soiling ..... <b>(Photo)</b>	300.00
115 ★	<b>10c Blue Green, Reprint (43).</b> Fresh, Gorgeous Color, single short perf. otherwise Very Fine ..... <b>(Photo)</b>	600.00
116 ★	<b>12c Greenish Black, Reprint (44).</b> Centered to top, Fresh, Pretty color, few short perfs. at top, Reasonably Attractive Appearance, A Scarce Stamp <b>(Photo)</b>	600.00
117 ★	<b>24c Violet, Reprint (45).</b> Well Centered, tiny thin speck, faint toned spot, shows almost entirely on back, otherwise Very Fine ..... <b>(Photo)</b>	700.00
118 ★	<b>30c Yellow Orange, Reprint (46).</b> Small faults, Perfs. touch, Fairly Attractive ..... <b>(Photo)</b>	1,000.00
119 ★	<b>90c Deep Blue, Reprint (47).</b> Well Centered, tiny thin spot, single partly blunted perf., otherwise Very Fine, Rare ..... <b>(Photo)</b>	1,300.00

*LOTS ON VIEW APRIL 30th, MAY 1st*

*10 A.M. - 3 P.M. & MORNING OF SALE*



56



57



58



59



63



64



72



73



69



75



76



96



86



87



88



93



89



92



98



101



102



104



105



108



110



112



113



114



115



116



117



118



119



121



135

# 1861 "FIRST DESIGN"

- 120 ★ **1c Indigo, "First Design" (55).** Fresh, o. g., Rich Color, single partly nibbed perf. at top, otherwise Very Fine, Rare, one of the finest examples known of the approximately twenty copies believed to exist, with P. F. Certificate ..... **(Photo)** 12,000.00
- 121 ★ **3c Brown Rose, "First Design" (56).** Fresh, Part o. g., thin, Very Fine Appearance ..... **(Photo)** 225.00
- 122 ★ **5c Brown, "First Design" (57).** Fresh, o. g., Well Centered, a single partly nibbed perf., otherwise Very Fine, Very Rare, with P. F. Certificate ..... **(Photo)** 7,000.00
- 123 ★ **10c Dark Green, "First Design" (58).** Exceptionally Well Centered, Rich Color, three small light toned spots on face, couple partly nibbed perf. tips, otherwise Extremely Fine ..... **(Photo)** 1,400.00

120

122

123



125

126

127

- 124 P **12c Black, "First Design", Plate Proof on India (59P).** Privately perforated, Very Fine Looking ..... **E. VI**
- 125 ★ **30c Red Orange, "First Design" (61).** Fresh, o. g., Deep Rich Color, centered bit to right, Beautiful Example of this Very Rare Stamp with P. F. Certificate ..... **(Photo)** 9,000.00
- 126 ★ **90c Dull Blue, "First Design" (62).** Fresh, Part o. g., Well Centered, tiny flaws, otherwise Very Fine, Rare, with P. F. Certificate ..... **(Photo)** 11,000.00
- 127 ★ **90c Dull Blue, "First Design," Imperforate (62a).** Large Margins, Fresh, light crease, Extremely Fine Appearance with P. F. Certificate **(Photo)** 1,500.00
- 128 P **90c Blue Green, "First Design," Trial Color Proof on Stamp Paper (62TC).** Very Fine & Very Scarce ..... 35.00

## 1861 ISSUE

129	★	<b>1c Blue (63).</b> Three Distinct Shades, small faults or perms. touch .....	82.50
130	★	<b>1c Blue (63). Block,</b> Fresh, o. g., perms. cut in at B. ....	130.00
131	★	<b>1c Blue (63). Block of Six (3x2),</b> Fresh, o. g. Marvelous Color, faint crease in B. row, single short perf., otherwise Very Fine ..... <b>(Photo)</b>	190.00+
132		<b>1c-15c 1861-67 Issues (63, 65, 68-69, 71, 75-76, 92, 95, 97-98).</b> 3c #65 is block, small faults or perms. touch .....	198.50
133	★	<b>3c Pink (64).</b> Fresh, Large Part o. g., Bright Color, faults, Well Centered, Rare Unused, with P. F. Certificate ..... <b>(Photo)</b>	875.00
134		<b>3c Pink (64).</b> Light town pmk., couple partly blunted perms., otherwise Very Fine .....	100.00
135	★	<b>3c Rose, Imperforate (65c). Vertical Pair with sheet margin,</b> light toned appearance as often, Very Fine ..... <b>(Photo)</b>	125.00
136	★	<b>3c Lake (66).</b> Fresh, o. g., Gorgeous Rich Color, centered slightly to top, Fine ..... <b>(Photo)</b>	550.00
137	★	<b>5c Buff (67).</b> Fresh, Rich Color, tiny thin spot, centered to left, Rare Unused ..... <b>(Photo)</b>	650.00
138	★	<b>10c Dark Green, Blue Green (68).</b> First, part o. g., small faults, otherwise Fine-Very Fine .....	80.00
139	★	<b>24c Brown Lilac (70a).</b> Fresh, Large Part o. g., Rich Color, small trivial corner crease, centered to bottom .....	135.00
140		<b>90c Blue (72).</b> Rich Color, Circle of V's cancel, Fine ..... <b>(Photo)</b>	50.00
141	★	<b>2c Black (73). Block of Six (3x2),</b> Fresh, Nearly Full o. g., hinge remnants, tiny corner crease in one, perms. in at top .....	255.00
142		<b>2c Black, Vertical Half Used as 1c (73b).</b> Tied on small piece by grid & Mass. town pmk., used with 2c Black #73 to pay 3c rate, Fine, Rare, on full cover cat. \$500.00 ..... <b>(Photo)</b>	—
143	★	<b>3c Scarlet (74).</b> Brilliant Color, centered slightly to right, Fine <b>(Photo)</b>	1,200.00
144	★	<b>15c Black (77).</b> Well Centered, faint overall toning, single short perf., otherwise Very Fine ..... <b>(Photo)</b>	125.00
145		<b>24c Blackish Violet (78c).</b> Odd Rosette cancel., Very Well Centered, Wide Margins, single short perf., otherwise Extremely Fine, Scarce Color <b>(Photo)</b>	50.00

# 1867 GRILLED ISSUES



146

147

- 146 ★ **5c Brown, Grilled All Over (80).** Deep Rich Color, Fresh, o. g., Only Six or Seven believed to exist, Two Being Unused, the Rarest Unused U. S. Stamp in Existence, with P. F. Certificate, Realized \$29,000.00 in our 362nd Sale in Nov. 1969 ..... (Photo) 27,500.00

- 147 **30c Orange, Grilled All Over (81).** Bold Crossroads Cancel, Rich Color, a few irregular perfs. as always with this type grill, a Fine Example of this Tremendous Rarity, only about six copies believed to exist, with P. F. Certificate. Notwithstanding all the Great Rarities we have handled over the years, this is the First Time we have ever offered a 30c Grilled All Over at Auction ..... (Photo) 25,000.00



- 148 **3c Rose, B. Grill (82).** Neat Cancel, Very Fine Example of this Extreme Rarity. This particular stamp is one of the Four known copies which were removed from a cover and sold separately (Illustrated and written up in Brookman Vol. II, pp. 129-130), With Photos of P. F. Certificate, Listed but Unpriced, First Time Ever offered at Auction, Estimate Net Value \$25,000.00 ..... (Photo) —

- 149 ★ **2c Black, Z. Grill (85B).** Fresh, tiny speck on face, centered to right, Very Scarce Unused ..... (Photo) 275.00



- 150 **10c Green, Z. Grill (85D).** Gorgeous Deep Color, Clear Boxed "Paid" Cancel, trivial corner perf. rounding, otherwise Very Fine, Extremely Rare, only Five copies known, this one being the only one with "Paid" Cancel, with P. F. Certificate ..... **(Photo)** 15,000.00
- 151 ★ **12c Black, Z. Grill (85E).** Part Imprint Single, Fresh, Intense Color, centered to T. L., Rare Unused, with P. F. Certificate ..... **(Photo)** 500.00
- 152 **1c-15c 1867 E., F. Grills (86-88, 90, 92-98).** 3c #94 is Block, faults or perfs. touch ..... 203.35
- 153 ★田 **3c Rose, E. Grill (88).** B. Margin Block of Six (3x2), Fresh, Bright Color, Nearly Full o. g., perfs. cut in at B., Attractive ..... 182.50
- 154 ★ **10c Blue Green, E. Grill (89).** Horiz. Pair, Fresh Color, small printing smear in top margin, centered to B. R., Scarce ..... 350.00
- 155 ★ **15c Black, E. Grill (91).** Fresh, Large Part o. g., couple perfs. a trifle blunted, otherwise Fine, with P. F. Certificate ..... **(Photo)** 500.00
- 156 ★ **10c Green, F. Grill (96).** Fresh, o. g., reperf. at right, just touching ..... 75.00
- 157 ★ **24c Gray Lilac, F. Grill (99).** Large Part o. g., faint thin spots, reperfed at R., Scarce Stamp ..... **(Photo)** 250.00
- 158 **30c Orange, F. Grill, Double Grill (100 Var).** Bold Target Cancel, crease, few short perfs., Very Scarce Variety ..... **(Photo)** 150.00

#### 1861 RE-ISSUES

- 159 ★ **2c Black, Re-Issue (103).** Centered to right, toned & cleaned, Fairly Attractive Looking Example of this Very Scarce Stamp with P. F. Certificate ..... **(Photo)** 750.00
- 160 ★ **3c Brown Red, Re-Issue (104).** Fresh Rich Color, Fine & Very Scarce ..... **(Photo)** 1,000.00
- 161 ★ **5c Brown, Re-Issue (105).** Fresh, Large Part o. g., Deep Rich Color, thin spot with minute pinhole, otherwise Fine, Very Scarce ..... **(Photo)** 700.00
- 162 ★ **10c Green, Re-Issue (106).** Fresh, Rich Color, centered bit to left, single short perf., otherwise Fine, Very Scarce, with P. F. Certificate **(Photo)** 800.00
- 163 ★ **15c Black, Re-Issue (108).** Fresh, tiny trace of o. g., centered to right, Fine, Very Scarce ..... **(Photo)** 850.00
- 164 ★ **24c Deep Violet, Re-Issue (109).** Fresh, small part o. g., Wonderful Rich Color, small thin spot, Very Fine appearance, Scarce ..... **(Photo)** 1,000.00
- 165 ★ **90c Blue, Re-Issue (111).** Fresh, Marvelous Deep Rich Color, centered to top, single short perf., otherwise Fine, Rare ..... **(Photo)** 1,750.00

## 1869 PICTORIAL ISSUE

166	★田	2c Brown (113). Block, Large Part o. g., hinge remnants, reperfed at right, Fine Appearance .....	(Photo)	225.00
167	★	2c Brown, Without Grill (113b). Part o. g., minute thin speck, centered to T. L., Very Scarce .....	(Photo)	250.00
168		2c Brown (113). Well Centered, Deep Rich Color, light cancels, Extremely Fine .....		8.50
169	★田	3c Ultramarine (114). Block, Brilliant o. g., B. Pair Mint, Lovely Color, each with split grill, Fine .....	(Photo)	120.00+
170	★	6c Ultramarine (115). Fresh, Part o. g., tiny tear at top, otherwise Fine .....		125.00
171	★	10c Yellowish Orange (116). Fresh, o. g., Bright Color, couple partly blunted perfs., otherwise Fine .....	(Photo)	135.00
172	★	12c Green (117). Fresh, corner crease, centered to L. ....		125.00
173	✉	15c Brown & Blue, Ty. I (118). Centered to B. R., tied by Bold Maltese Cross, Red & Blue Transit Marks, on Aug. 14, 1869 cover to France, T. L. corner of cover worn away, Scarce .....		300.00
174	★	15c Brown & Blue, Ty. II (119). Horiz. Pair, Fresh, o. g., Rich Colors, small corner fault on one, centered far to left .....	(Photo)	310.00
175		15c Brown & Blue, Ty. II, Double Grill (119 Var). Neat Rosette Cancel, centered to B., Scarce .....	(Photo)	125.00



176		15c Brown & Blue, Center Inverted (119b). Neat Target Cancel, minute flaws, Fine Appearance, with P. F. Certificate .....	(Photo)	6,000.00
177	★	24c Green & Violet (120). Light Overall toning, otherwise Fine .....	(Photo)	350.00

## 1869 RE-ISSUES

178	★	1c Buff, Re-Issue (123). Small filled thin spot, Very Fine Appearance .....	(Photo)	115.00
179	★	6c Blue, Re-Issue (126). Fresh, Part o. g., small thin spot, centered to top .....	(Photo)	325.00
180		15c Brown & Blue, Re-Issue (129). Well Centered, light Reg. cancel, small crease torn at one spot, otherwise Very Fine .....	(Photo)	200.00
181	★	1c Brown Orange, Re-Issue (133a). P. F. Certificate states . . . "Scott 133a . . . soiled and regummed," centered to L., Fairly Attractive .....		90.00
182	★田	1c Buff, Re-Issue (133). Block, o. g., pinpoint thin speck in one, very faint toning, really trivial, otherwise Very Fine .....	(Photo)	450.00



133



136



137



140



143



144



145



149



158



159



160



161



155



157



162



163



164



165



174



167



171



175



177



178



179



180



184



186



187



188



191



197



201



202



203



207



210



214



## NATIONAL BANK NOTE CO. — GRILLED

183	★	2c Red Brown, Grill (135). Light soiling around perfs., otherwise Fine	75.00
184		2c Red Brown, End Roller Grill (135 Var). Light Blue Cancel, some short perfs. caused by the end roller grill, centered to top, Very Scarce (Photo)	100.00
185	★	6c Carmine, Grill (137). Block, Fresh, Nearly Full o. g., few irregular perfs. on one stamp, few perfs. lightly strengthened, really trivial, centered a trifle to B., nevertheless, a Fine & Rare Block (Photo)	1,500.00
186		6c Carmine, Grill (137). Used, Very Fine, with P. F. Certificate (Photo)	50.00
187	★	7c Vermilion, Grill (138). Fresh, Rich Color, Well Centered, P. F. Certificate states genuine grill, regummed, Very Fine (Photo)	250.00
188	★	7c Vermilion, Grill (138). Fresh, tiny sealed tear, otherwise Fine (Photo)	250.00
189		7c Vermilion, Grill (138). Partially struck "US" in Circle, centered to T.	45.00
190	★	30c Black, Grill (143). Block, Fresh, o. g., small light natural paper wrinkle, centered to right, Rare (Photo)	5,000.00
191		30c Black, Grill (143). Used, Exceptionally Well Defined Grill, centered to left, with P. F. Certificate (Photo)	200.00

## NATIONAL BANK NOTE CO. — WITHOUT GRILL

192	★	2c Red Brown (146). Block, Fresh Rich Color, light crease top pair, otherwise Fine	70.00
193	★	3c Green (147). Block, Fresh, o. g., Fine-Very Fine	50.00
194	★	6c Carmine (148). Fresh, Brilliant Color, reperfed, Fine Appearance	60.00
195	★	7c Vermilion (149). Fresh, Deep Rich Color, crease, centered to top	75.00
196	★	10c Brown (150). Light soiling, otherwise Fine	60.00
197	★	12c Violet (151). Mint, Fine (Photo)	120.00
198		12c Violet (151). Horiz. Strip of Five, Neat Greenish Blue Town & Target cancels, tiny sealed tear in one, otherwise a Fine & Scarce Multiple	67.50+
199		6c-90c 1870-88 Bank Notes (151-154, 162, 165, 189, 191, 208, 217). 15c #189 is unused, small faults or perfs. touch	188.50
200	★	15c Bright Orange (152). Pretty Color, small faults, Fine centering	85.00
201	★	24c Purple (153). Well Centered, small corner crease & light soiling, otherwise Very Fine (Photo)	90.00
202	★	30c Black (154). Horiz. Pair, Part o. g., centered to right (Photo)	475.00

## CONTINENTAL BANK NOTE CO.

203	★	1c Dark Ultramarine, Double Paper (156 Var). Small faults, centered to top, Unlisted, Scarce (Photo)	—
204	★	1c Ultramarine (156). Block, Fresh, centered to R., one has corner crease	75.00
205	★	1c-30c 1873-88 Bank Note (156-158, 183, 189, 206, 216-217). Fresh, some o. g., mostly small faults or perfs. touch	146.00

206	<b>2c Brown, Double Paper (157 Var). Horiz. Pair,</b> Neat Maltese Cross cancels, Fine, Scarce .....	20.00+
207 ★	<b>3c Green, "Cogwheel" Punch Patent (158 Var).</b> Fresh, o. g., centered to T., Scarce .....	(Photo) 80.00
208 ★田	<b>6c Brown Rose (159). Block,</b> Fresh Bright Color, centered to the R., small internal sealed tear in one .....	(Photo) 275.00
209 ★	<b>7c Orange Vermilion (160).</b> Fresh, small part o. g., Bright Color, centered to B. ....	90.00
210 ★	<b>12c Blackish Violet (162).</b> Fresh, Rich Color, Fine .....	(Photo) 150.00
211 ★	<b>12c Blackish Violet (162).</b> Crease, otherwise Fine .....	150.00
212 ★	<b>15c Pale Orange (163).</b> Fresh, Pretty Shade, small sealed tear at T., otherwise Fine .....	125.00
213 ★	<b>30c Gray Black (165).</b> Fresh, faint thin spots, centered to right .....	120.00
214 ★	<b>90c Rose Carmine (166).</b> Fresh, Rich Color, centered to left .....	(Photo) 225.00
215 ★田	<b>90c Rose Carmine (166). Block,</b> Fresh, o. g., perfs touch at B. Attractive & Rare Block .....	(Photo) 1,250.00
216 ★田	<b>2c Vermilion (178). Block,</b> Deep Rich Color, small faults top pair, centered to T. R., Scarce Block .....	250.00
217 ★	<b>2c Vermilion, Imperforate (178a). Horiz. Pair,</b> Fresh, Rich Color, tiny scissor cut in margin between stamps, left margin trifle cut in, otherwise Very Fine, Rare .....	(Photo) 500.00
218 ★	<b>5c Blue, Continental Grill (179c).</b> Fresh, o. g., faint crease, centered to B., Very Scarce .....	(Photo) 150.00

### SPECIAL PRINTINGS ON HARD PAPER

219 ★	<b>1c Ultramarine, Special Printing (167).</b> Fresh, Lovely Color, some perfs. trimmed as usual, Very Fine, Rare, with P. F. Certificate .....	(Photo) 2,500.00
220 ★	<b>2c Dark Brown, Special Printing (168).</b> Fresh, Intense Color, Perfs. trimmed, top & bottom, design intact, there is a row of perfs at top well into design, Attractive & Rare, signed "Geo. B. Sloane," with P. F. Certificate .....	(Photo) 1,600.00
221 ★	<b>3c Blue Green, Special Printing (169).</b> Fresh, perfs trimmed at left, centered trifle to R., Fine, with P. F. Certificate, one of the Rarest of all the Special Printings .....	(Photo) 3,750.00
222 ★	<b>6c Dull Rose, Special Printing (170).</b> Fresh, few irregular perfs., Attractive Appearing & Rare, signed "Geo. B. Sloane," with P. F. Certificate .....	(Photo) 3,250.00
223 ★	<b>10c Pale Brown, Special Printing (172).</b> Fresh, Well Centered, perfs trimmed at top, few perfs. blunted slightly, normal for the issue, Very Fine, Rare & Handsome, with P. F. Certificate .....	(Photo) 2,500.00
224 ★	<b>12c Dark Violet, Special Printing (173).</b> Fresh, some perfs. trimmed, normal for the issue, all but B. row intact, Fine & Rare, with P. F. Certificate .....	(Photo) 1,500.00



219 – 228

- 225 ★ **15c Bright Orange, Special Printing (174).** Fresh, Brilliant Color, Some perfs. trimmed, normal for the issue, Fine, Very Rare, with P. F. Certificate ..... (Photo) 2,500.00
- 226 ★ **30c Greenish Black, Special Printing (176).** Fresh, a few perfs. trimmed, as normal, Very Fine, Rare, "W. H. C." (Colson) handstamp guarantee, with P. F. Certificate ..... (Photo) 2,750.00
- 227 ★ **90c Violet Carmine, Special Printing (177).** Fresh, Gorgeous Color, few perfs. clipped as normal, Fine & Rare, with P. F. Certificate .... (Photo) 2,900.00
- 228 ★ **2c Carmine Vermillion, Special Printing (180).** Fresh, Beautiful Color, perfs. partly blunted at left by normal scissors cutting, small corner thin, Very Attractive Example of this Very Rare Stamp, with P. F. Certificate ..... (Photo) 8,000.00

#### AMERICAN BANK NOTE CO.

- 229 ★ **1c Blue (182). Horiz. Pair,** small toned spot on back of one, otherwise Fine 65.00
- 230 ★ **6c Brown Rose (186). T. Margin Strip of Three with Plate No. 305** Fresh, small thin spots, centered to R., Scarce ..... (Photo) 335.00
- 231 ★ **10c Brown (188).** Fresh & Fine ..... (Photo) 72.50
- 232 ★ **15c Orange, 30c Black (189–190).** Fresh, Large Part o. g., 15c centered to T., other small faults ..... 110.00
- 233 ☐ **90c Carmine (191). Horiz. Block of Six with R. Imperf. Margin & Half Arrow,** tied on Piece by Neat Reg. Pmks., Fine–Very Fine, Scarce Block ..... (Photo) 340.00

# SPECIAL PRINTINGS ON SOFT PAPER



234 - 244

- 234 ★ 1c Dark Ultramarine, Special Printing (192). Fresh, Gorgeous Color, small thin, Fine Appearance, Rare, signed "Edw. Stern", with P. F. Certificate (Photo) 3,750.00
- 235 ★ 2c Black Brown, Special Printing (193). Fresh, Deep Rich Color, Marvelous Centering, Extremely Fine, Rare, signed "E. Stern", with P. F. Certificate (Photo) 2,750.00
- 236 ★ 3c Blue Green, Special Printing (194). Pretty Color, Centered trifle to right, A Choice and Fine Example of this Extremely Elusive Rarity, with P. F. Certificate (Photo) 4,000.00
- 237 ★ 6c Dull Rose, Special Printing (195). Fresh, tiny faint thin spots, a single short perf., still Fine, Very Rare, with P. F. Certificate (Photo) 3,200.00
- 238 ★ 7c Scarlet Vermilion, Special Printing (196). Wonderful Rich Color, thin spots, centered bit right, Rare (Photo) 1,750.00
- 239 ★ 10c Deep Brown, Special Printing (197). Incredible Centering, Magnificent Color, minute tear in right margin, otherwise Extremely Fine & Handsome, Rare, with P. F. Certificate (Photo) 3,250.00

- 240 ★ **12c Blackish Purple, Special Printing (198).** Wide Margins, Marvelous Centering, Intense Color, tiny ink spot on face, otherwise Extremely Fine, Rare, with P. F. Certificate ..... **(Photo)** 2,500.00
- 241 ★ **15c Orange, Special Printing (199).** Fresh, Marvelous Bright Rich Color, thin spot, Fine Appearing Example of this seldom-seen Rarity, with P. F. Certificate ..... **(Photo)** 3,000.00
- 242 ★ **24c Dark Violet, Special Printing (200).** Fresh, Gorgeous Color, Fine & Rare ..... **(Photo)** 1,250.00
- 243 ★ **30c Greenish Black, Special Printing (201).** Centered slightly to B., tiny specks of blue on face, still a Fine Example of this Rare Stamp, "Klein" handstamp guarantee, with P. F. Certificate ..... **(Photo)** 2,750.00
- 244 ★ **90c Dull Carmine, Special Printing (202).** Fresh, Well Centered, natural s.e. at R., Splendid Color, Very Fine, Rare, with P. F. Certificate **(Photo)** 3,000.00



345

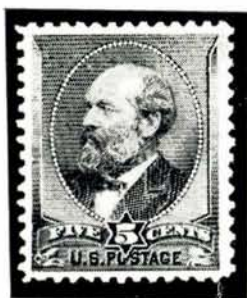
346

- 245 ★ **2c Scarlet Vermilion, Special Printing (203).** Fresh, Brilliant Color, tiny nick between perfs., really negligible, otherwise a Very Fine Example of one of the Rarest of All Special Printings, with P. F. Certificate **(Photo)** 7,500.00
- 246 ★ **5c Deep Blue, Special Printing (204).** Large Margins, Wonderfully Well Centered, Beautiful Color, Extremely Fine, Probably the Finest Known of this Exceedingly Rare Stamp, with P. F. Certificate ..... **(Photo)** 10,000.00

## LATER AMERICAN BANK NOTE CO. ISSUES

(Including Special Printings)

- 247 ★ **5c Brown (205a).** Block, Fresh, o. g., Rich Color, couple perfs. lightly reinforced, centered a trifle to B., Fine ..... 125.00



- 248 ★ **5c Gray Brown, Special Printing (205c).** Well Centered, Fresh, Wonderful Impression, Very Fine Example of one of the Rarest of All Special Printings, W. H. C. (Colson) handstamp guarantee, with P. F. Certificate 8,000.00

249 ★	1c Gray Blue, Circular Eight Hole Punch (206 Var). Fresh, o. g., couple short perfs. at T., otherwise Fine, Scarce .....	75.00
250 ★	3c Green, Circular Eight Hole Punch (207 Var). Fresh, o. g., Very Fine for this, Scarce ..... (Photo)	100.00
251 ★	6c Brown Red (208a). Fresh, o. g., small thin spots, Fine Appearance .....	50.00
252 ★	6c Brown Red (208a). Fresh, o. g., Rich Color, couple minute thin specks, centered to L. B. ....	50.00
253 ★	10c Brown (209). Block, Fresh, o. g., centered to Top .....	75.00
254 ★	1c-3c 1883-87 Bank Notes (210, 212-214). Blocks, Fresh, o. g., two #212, one #213 & one #214 small thin spots, others Fine-Very Fine .....	123.00
255 ★	4c Blue Green, 5c Indigo (211, 216). Blocks, Fresh, o. g., 4c has two with small thin spots, 5c top pair creased, otherwise Very Good-Very Fine ....	170.00
256 ★	2c Pale Red Brown, Special Printing (211B). Bottom Margin Block, Fresh, o. g., Well Centered small thin spot in one, another with rounded corner perf., otherwise Very Fine, H. F. C. (Colman) handstamp guarantees (Photo)	750.00
257 ★	2c Pale Red Brown, Special Printing, Horizontal Pair Imperf. Between (211Bc). With Part Top Imprint, Fresh, part o. g., creased, staining between stamps & margin, Fine Centering, Very Scarce, with P. F. Certificate .....	750.00



258 ★	4c Deep Blue Green, Special Printing (211D). Fresh, Gorgeous Rich Color, Fine Example of this Seldom Seen Rarity, with Original P. F. Certificate with Photo of Block from which this single came (Top Right Stamp) (Photo)	7,000.00
259 ★	2c Green, Imperforate (213a). Large Margins incl. Full B. Sheet Margin, Fresh, o. g., Very Fine, Rare ..... (Photo)	300.00
260 ★	3c Vermilion (214). Block, Fresh, o. g., Fine .....	45.00
261 ★	4c Carmine (215). Block, Fresh, o. g., tiny thin spot in one, otherwise Fine Block .....	75.00
262 ★	30c Orange Brown (217). Block, Fresh, Large Part o. g., few tiny thin specks in one, otherwise Fine ..... (Photo)	240.00
263 ★	90c Purple (218). Thin, Fine Appearance .....	150.00

# 1890 ISSUE

264	★	1c-3c 1890 Issue (219-221). Blocks, Fresh, o. g., two #219D tiny faint thin spots, others Fine-Very Fine .....	111.00
265	★	2c Lake, Imperforate (219De). B. Margin Block, Fresh, Rich Color, Very Fine .....	(Photo) 50.00+
266	★	2c Carmine, Cap on Both "2"s (220c). Rejoined Block, Fresh, o. g., centered to T., Scarce .....	80.00
267	★	3c Purple (221). B. R. Corner Margin Block of Six, Mint, small pre-print paper fold in one, centered to T. L. ....	60.00
268	★	4c Brown, Imperforate (222a). Horiz. Pair, Fresh, o. g., small natural wrinkle, tiny thin spot in one, other Very Fine .....	(Photo) 135.00
269	★	5c Chocolate, Imperforate (223a). Large Margins, Fresh, o. g., Lovely Color, Very Fine .....	(Photo) 65.00
270	★	5c Black Brown, Imperforate (223a). B. R. Margin Pair, small thin in one, light toning on back of other, Very Fine Appearance .....	(Photo) 130.00
271	★	5c Black Brown, Imperforate (223a). Horiz. Pair, Fresh, o. g., small thin in one, other Very Fine .....	(Photo) 130.00
272	★	6c Brown Red, Dark Brown Red, 8c Lilac (224-225). Blocks, Fresh, o. g., few faults, some trivial, Very Good-Very Fine Appearance .....	127.50
273	★	6c Brown Red, Imperforate (224a). Horiz. Pair, Fresh, o. g., faint gum thin specks in one, other Very Fine .....	(Photo) 135.00
274	★	8c Lilac, 10c Green (225-226). Blocks, 8c o. g., couple tiny thin specks, 10c brownish o. g., toning .....	127.50
275	★	15c Indigo (227). Block, Rich Color, L. perms bit in .....	130.00
276	★	15c Indigo, Imperforate (227a). L. Margin Block, Fresh, o. g., small surface rubbings, offset on back, otherwise Very Fine, Scarce in Block .....	(Photo) 450.00
277	★	30c Black, 50c Orange (228, 260). Fresh, o. g., tiny thin spots, Very Fine Appearance .....	82.50
278	★	30c Black (228). Block, Part o. g., reinforced, couple small corner repairs .....	175.00
279	★	90c Orange (229). Block, brownish o. g., small faults, Scarce Block .....	300.00
280	★	90c Orange, Imperforate (229a). Vertical Pair, Fresh, o. g., closed tear B. stamp, tiny thin speck top stamp, otherwise Very Fine .....	(Photo) 650.00



49



85



103



131



166



169



182



233



185



190



208



215



256



262



265



292



276



291



297

## COLUMBIAN ISSUE

281	★	1c-2c Columbian (230-231). Blocks, Fresh, o. g., incl. two blocks of 2c, one the Broken Hat Variety, light reinforcements, one 1c small thin spot, others Very Good-Very Fine .....	61.00
282	★	2c Columbian, Imperforate (231b). Ample to Huge Margins, Fresh, o. g., faults as always, Rare ..... (Photo)	475.00
283	★	3c Columbian (232). Block, Fresh, o. g., Fine-Very Fine .....	45.00
284	★	4c Blue, Columbian Error of Color (233a). Fresh, part o. g., Exceptionally Well Centered, tiny thin spot & minute tear in bottom margin, otherwise Very Fine, one of the best centered examples of this Popular Rarity known ..... (Photo)	4,650.00
285	★	4c, 10c Columbians (233, 237). Blocks, Fresh, o. g., one 4c closed tear, two 10c slightly rounded corner perms., others Fine-Very Fine .....	157.50
286	★	5c Columbian (234). Block, Fresh, o. g., tiny reinforcement, Fine-Very Fine .....	65.00
287	★	6c Columbian (235). Block, Bright Color, Fresh, o. g., light perf. strengthening, Fine .....	72.50
288	★	6c Columbian (235). Mint Block, Pretty Color, natural gum wrinkles, centered to T. L., Fine .....	72.50
289	★	6c, 10c Columbian (235, 237). Blocks, Fresh, o. g., each has one stamp with small thin spot, others Fine .....	172.50
290	★	10c Columbian (237). Block, Fresh, centered far to L. ....	100.00
291	★	15c Columbian (238). Block, Fresh, o. g., a few perms. touch at L., Fine ..... (Photo)	200.00
292	★	30c Columbian (239). B. Margin Block with Part Imprint & Plate No., Fresh, o. g., Wonderful Centering, couple small hinge reinforcements, some natural gum wrinkles, Extremely Fine ..... (Photo)	275.00
293	★	50c Columbian (240). Fresh, small part o. g., Incredibly Deep Color, centered to left .....	90.00
294	★	50c Columbian, Punched with Rows of 2½mm Holes (240 Var). B. Imprint, "S" & Plate No. 77 Block of Eight, Fresh, Fine, Very Scarce & Unusual, Normal Plate Block of Eight Cat. \$1750.00 .....	—
295	★	\$1.00 Columbian (241). Fresh, Bright Color, Fine ..... (Photo)	250.00
296	★	\$1.00 Columbian (241). Rich Color, Fine ..... (Photo)	250.00
297	★	\$1.00 Columbian (241). Block, Brilliant Mint, perms. just touch at top, Attractive & Rare Block ..... (Photo)	1,250.00

- 298 ★ **\$2.00 Columbian (242).** Fresh, o. g., couple tiny thin spots, couple small surface rubbings, otherwise Fine ..... (Photo) 300.00
- 299 ★ **\$2.00 Columbian (242).** Fresh, Large Part o. g., Rich Color, single short perf., centered to B., perfs. just touch ..... (Photo) 300.00
- 300 ★田 **\$2.00 Columbian (242). Block,** with Left Imprint Fresh, o. g., Bright Color, bottom pair has small faults, centered to top, Attractive & Rare Block ..... (Photo) 1,600.00
- 301 ★田 **\$2.00 Columbian (242). Block,** Fresh, o. g., few faint thin spots, Fine Appearance ..... (Photo) 1,600.00
- 302 ★ **\$3.00 Columbian (243).** Two tiny corner perf. creases, otherwise Fine, with P. F. Certificate ..... (Photo) 450.00
- 303 ★田 **\$4.00 Columbian (244). Block,** Fresh, o. g., Deep Rich Color, horiz. perfs. rejoined, with light staining between left pair, tiny natural inclusion in one, centered to top, Attractive & Rare Block, with P. F. Certificate ..... (Photo) 5,500.00
- 304 ★ **\$5.00 Columbian (245).** Large part o. g., couple tiny thin specks in perfs., otherwise Fine ..... (Photo) 700.00

#### 1894 ISSUE, UNWATERMARKED

- 305 ★ **1c-10c 1894-98 Issues (Betw 246-282C).** Twelve Diff., Fresh, Mostly o. g., few small faults or perfs. touch ..... 115.75
- 306 ★田 **2c Pink, Carmine, Red (248, 266 Var, 279B).** Fresh, o. g., Block of first, combination Ty. II, III Block of second, B. Imprint & Plate No. Block of Six of last, trivial thin speck in one #279B, otherwise Fine Lot ..... 68.00
- 307 ★ **2c Carmine, Ty. III, Imperforate Vertically (252a). Top Imprint & Plate No. 153 Strip of Three,** Pale Shade, o. g., bottom perfs. clipped on left & center stamps, other creased, a Rare Perforation Error, Unpriced with Imprint & Plate Number ..... (Photo) 975.00+
- 308 ★ **3c Purple, Imperforate (253a). Horiz. Pair,** Large Part o. g., R. stamp faulty, small thin spot betw. stamps barely touching L. stamp, Very Fine Appearance ..... (Photo) 140.00
- 309 ★ **4c Dark Brown, Imperforate (254a). Horiz. Pair,** Large Margins, Fresh, light crease & wrinkles, speck in margin clear of design, otherwise Very Fine ..... (Photo) 150.00
- 310 ★ **5c Chocolate, Imperforate (255b). Horiz. Pair,** Fresh, part o. g., small thin spot, crease, Very Fine Appearance ..... (Photo) 145.00
- 311 ★田 **8c Violet Brown (257). Block,** Fresh, o. g., Very Fine ..... 39.00
- 312 ★ **10c Green, Imperforate (258a). Horiz. Pair,** Fresh, small faint thin spot, Very Fine Appearance ..... (Photo) 150.00
- 313 ★田 **10c Green (258). Block,** small thin spots, centered to right ..... 85.00
- 314 ★田 **15c Dark Blue (259). Block,** Fresh, o. g., one stamp tiny thin spot, others Very Fine ..... (Photo) 160.00
- 315 ★ **\$1.00 Black, Ty. I (261).** Fresh, o. g., small faults, Very Fine Appearance ..... (Photo) 135.00
- 316 ★ **\$1.00 Black, Ty. I (261).** Small faults, Very Fine Centering ..... (Photo) 135.00



230



257



259



217



218



231



250



269



268



270



271



280



273



282



284



295



296



298



299



302



153



304



308



307

317	★	☐	<b>\$1.00 Black, Ty. I (261). Block, Fresh, o. g., centered to top, Scarce Block</b> (Photo) 585.00
318			<b>\$1.00 Black, Ty. I, \$2.00 Blue (261, 262). Used, \$1.00 Fine, other crease,</b> perfs. touch ..... 167.50
319	★		<b>\$2.00 Blue (262). Fresh, Nearly Full o. g., light crease, tiny thin spot,</b> Fine Appearance ..... (Photo) 200.00
320	★	☐	<b>\$2.00 Blue (262). Block, Fresh, o. g., small thin spot in one, otherwise Very</b> Good-Fine, Very Scarce Block ..... (Photo) 1,375.00
321	★	☐	<b>\$5.00 Dark Green (263). Block, Fresh, o. g., Gorgeous Color, few natural</b> gum wrinkles, perfs. touch on left pair, one has tiny thin speck, other pair Fine, Rare Block ..... (Photo) 2,400.00

### 1895-98 ISSUES

322	★		<b>1c Blue, Imperforate (264c). Horiz. Pair, Fresh, Large Part o. g., thin</b> spot, Very Fine Appearance ..... (Photo) 100.00
323	★	☐	<b>4c-10c 1895 Issue (269, 272-273). Blocks, Fresh, o. g., hinge remnants,</b> Very Good ..... 87.50
324	★		<b>10c Green, Imperforate (273a). Horiz. Pair, Fresh, o. g., sealed scissor</b> cut between stamps, margin close at B., Fine ..... (Photo) 150.00
325	★	☐	<b>15c Dark Blue (274). Block, Fresh, o. g., small faults, Very Fine Appear-</b> ance ..... 130.00
326	★	☐	<b>50c Orange (275). Block, Fresh, o. g., Bright Color, one stamp tiny thin</b> spot, perfs. lightly reinforced, centered to L., Attractive ..... 190.00
327	★	☐	<b>2c Rose Carmine (279Be). Block, Fresh, o. g., Fine</b> ..... 50.00
328	★		<b>2c Red, Booklet Pane (279Be). With Horiz. Guide Line, Very Good</b> .... 47.50
329	★	☐	<b>4c-10c 1898 Issue (280-281, 283). Blocks, Fresh, o. g., 4c Mint, one 5c</b> faint thin spot, 10c few light gum toned specks, Mostly Very Good- Very Fine ..... 113.50
330	★	☐	<b>15c Olive Green (284). Block, with Part Imprint &amp; Plate No., Fresh, o. g.,</b> centered to top ..... 105.00

### TRANS-MISSISSIPPI ISSUE

331	★	☐	<b>1c-2c Trans-Mississippi (285-286). Blocks, Fresh, o. g., incl. two Blocks</b> of 2c (Distinct Shades), couple natural wrinkles, perfs. touch on two 2c, others Fine-Very Fine ..... 78.00
332	★	☐	<b>4c Trans-Mississippi (287). Block, Fresh, o. g., Bright Color, crease in</b> one, few small gum thin spots, centered to L. .... 105.00
333	★	☐	<b>4c Trans-Mississippi (287). R. Margin Block, Fresh, o. g., Bright Color,</b> centered to top ..... 105.00
334	★	☐	<b>5c Trans-Mississippi (295). Block, part o. g., small faults, Fine Appearance</b> ..... 95.00
335	★	☐	<b>8c Trans-Mississippi (289). Block, Fresh, o. g., tiny thin speck in one,</b> others Fine ..... 120.00
336	★	☐	<b>10c Trans-Mississippi (290). Block, Brilliant Mint, centered to bottom</b> ..... 175.00



300



301



314



303



317



320



321



339



342



343



389



416



460



457

- 337 ★ **50c Trans-Mississippi (291).** Fresh, o. g., Fine ..... (Photo) 150.00
- 338 ★ **50c Trans-Mississippi (291).** Fresh, o. g., sealed tear, Fine Looking ..... 150.00
- 339 ★田 **50c Trans-Mississippi (291).** Block, Fresh, o. g., centered to bottom, Very Scarce Block ..... (Photo) 1,100.00
- 340 ★ **\$1.00 Trans-Mississippi (292).** T. Margin Single with part plate no., Fresh, small part o. g., Fine ..... (Photo) 350.00
- 341 ★ **\$1.00 Trans-Mississippi (292).** Fresh, faint suggestion of thin speck in watermark under regumming, Fine Appearance ..... (Photo) 350.00
- 342 ★田 **\$1.00 Trans-Mississippi (292).** Block with Top Imprint, Fresh, o. g., few perfs. very lightly strengthened, Fine & Rare Block ..... (Photo) 3,200.00
- 343 ★田 **\$2.00 Trans-Mississippi (293).** Block, Fresh, o. g., Rich Color, two minute thin specks in bottom pair, centered to top, Still an Attractive Example of this Rare Block ..... (Photo) 4,500.00

### Fifteen Minute Intermission

### PAN-AMERICAN ISSUE

- 344 ★田 **1c-10c Pan-American (294-299).** Blocks, one 5c single short perf., two 10c light crease, otherwise Fine-Very Fine Set ..... 437.50



245

246

- 345 ★ **1c Pan-American, Center Inverted (294a).** Fresh, without gum, tiny faint corner thin, centered to bottom, Attractive Appearing Example of this Rarity ..... (Photo) 3,500.00
- 346 ★ **4c Pan-American, Center Inverted, "Specimen" Overprint (296b).** "Specimen" removed, appears as #296a, tiny faults, otherwise Fine (Photo) 2,600.00

### 1902 ISSUE

- 347 ★田 **1c-13c 1902 Issue (300-304, 306, 308).** Blocks, Mostly Mint, incl. two blocks of 13c (distinct shades), one 5c thin spot, others Very Good-Very Fine ..... 157.25
- 348 ★ **1c Green, Booklet Pane (300b).** Mint, with Horiz. Guide Line, Fine ..... 50.00
- 349 ★田 **15c Olive Green (309).** Block, centered to left ..... 110.00
- 350 ★ **50c Orange (310).** Mint, natural gum wrinkles, centered slightly to B. R. .... 70.00
- 351 ★ **\$2.00 Blue (312).** Faint suspicion of minute thin speck, reperfed at B., Fine Appearance ..... (Photo) 200.00
- 352 ★ **\$5.00 Dark Green (313).** Fresh, Deep Rich Color, reperfed at L. with couple short perfs., Very Fine centering ..... (Photo) 375.00

- 353 ★ 1c Blue, Green, Imperforate (314). Center Line Block, small tear in one, surface rubbings, regummed, Scarce ..... 125.00
- 354 ★ 1c Blue Green, Imperforate Coil, Schermack Ty. I, Seven Holes (314). Pair Fine, Scarce ..... (Photo) 125.00



- 355 4c Brown, Imperforate Coil, Schermack Ty. III (314A). Neat machine Cancel, tiny scuffed spot in left margin covered over by pencil, Fine appearance, Rare, with P. F. Certificate ..... (Photo) 3,250.00
- 356 ★ 5c Blue, Imperforate (315). Horiz. Pair, Fresh, Large Margins, tiny thin spot in margin barely touching one, otherwise Very Fine ..... (Photo) 320.00

358



357

359

- 357 ★ 5c Blue, Imperforate (315). Right Imprint & Plate No. 4075 Block of Six, Mint, Very Fine, a Lovely Block ..... (Photo) 1,850.00
- 358 ★ 5c Blue, Coil (317). Pair, Fine & Rare, with A. P. S. Certificate (Photo) 1,350.00
- 359 ★ 1c Blue Green, Coil (318), Pair, Fine & Rare, with P. F. Certificate (Photo) 1,150.00



309



310



312



315



316



319



322



351



324



337



340



341



354



356



352



382



392



394



395



396



406



- 360 ★ 2c Lake, Imperforate (320a). T.L. Corner Margin Block, tiny natural printing smear, Very Fine ..... 85.00

### LOUISIANA PURCHASE, JAMESTOWN ISSUES

- 361 ★ 1c-2c Louisiana Purchase (323-324). Blocks, 2c Mint, Fine ..... 62.50  
 362 ★ 1c Louisiana Purchase (323). B. Imprint & Plate No. 2130 Block, Mint, centered to top ..... 100.00



- 363 ★ 2c Louisiana Purchase, Imperforate Horizontally (324a). Right Margin Pair, top stamp creased, bottom stamp tiny thin spot, perfs. touch at left, typical centering for this Rare Variety ..... (Photo) 3,000.00  
 364 ★ 3c Louisiana Purchase (325). R. Margin Block, Mint, small crease in one, others Fine ..... 85.00  
 365 ★ 3c Louisiana Purchase (325). Block, Fine ..... 85.00  
 366 ★ 3c Louisiana Purchase (325). Block, thin spots, Fine appearance ..... 85.00  
 367 ★ 5c Louisiana Purchase (326). Block, Fine-Very Fine ..... 105.00  
 368 ★ 5c Louisiana Purchase (326). Block, light even toning, few tiny surface rubbed specks, otherwise Very Fine ..... 105.00  
 369 ★ 5c Louisiana Purchase (326). Mint Block, centered to L. .... 105.00  
 370 ★ 10c Louisiana Purchase (327). Small faults, Attractive appearance ..... 70.00  
 371 ★ 10c Louisiana Purchase (327). R. Arrow Block, Mint, bottom pair creased, others Fine ..... 290.00  
 372 ★ 1c-5c Jamestown (328-330). Blocks, perfs. touch, 5c regummed, one has small filled thin spot, Attractive Set ..... 184.50

### 1908 ISSUES

- 373 ★ 1c Green, 2c Carmine, Booklet Panes (331a-332a, 374a-375a). #332a Guide Line at L., #375a with Plate No., #331a couple small thin spots, otherwise Fine Lot ..... 60.00  
 374 ★ 4c-6c 1908 Issue (334-336). Blocks, Very Good-Fine ..... 88.50

375	★	8c Olive Green (337). T. Imprint & Plate No. 4919 Block of Six, Very Good .....	95.00
376	★	10c Yellow, 13c Blue Green (338-339). Blocks, Fine .....	76.50
377	★	15c Ultramarine (340). R. Imprint & Plate No. 4951 Block of Six, selvage bit reduced, Fine .....	140.00
378	★	\$1.00 Violet Brown (342). Small thin spot, Fine Appearance .....	92.50
379	★	1c-3c 1908-16 Imperforates (343, 383, 408-409, 484). Plate No. Blocks of Six, #383 with Imprint & A (Creased), #484 regummed, otherwise Very Fine .....	105.50
380	★	2c Carmine, Imperforate (344). Center Line & Four Arrow Blocks, Mostly Mint, Very Fine .....	71.00
381	★	1c-3c 1908-16 Imperforates (344-345, 384, 408-409, 481-482, 483-484). Blocks, one #384 small thin spot, others Very Fine .....	96.85
382	★	3c Deep Violet, Imperforate Coil, Schermack Ty. III (345 Var). Line Strip of Four, Very Fine, Guide Line Pair Unpriced .....	(Photo) 300.00+
383	★	4c Orange Brown, Imperforate (346). L. Arrow Block, Very Fine .....	41.00
384	★	4c Orange Brown, Imperforate (346). Center Line Block, small tear in one, otherwise Very Fine .....	70.00
385	★	5c Blue, Imperforate (347). R. Arrow Block, Very Fine .....	72.50
386	★	1c-5c 1908 Coils (348-351). Pairs, perms. touch on one 2c, others Fine-Very Fine .....	122.75
387	★	5c Blue, Coil (355). Imprint Paste Up Strip of Four, perms. cut in on paste up, others Fine, Scarce .....	100.00

### BLUISH PAPERS

388	★	1c Green, Bluish (357). Block, 2mm spacing, Fine .....	80.00
389	★	1c Green, Bluish (357). Block, 3mm spacing, Fine, Very Scarce (Photo) .....	500.00
390	★	2c Carmine, Bluish (358). Block, 3mm spacing, hinge remnants, Fine .....	120.00



391

393

391	★	4c Orange Brown, Bluish (360). Fine Example of this Rarity, with P. F. Certificate .....	(Photo) 6,000.00
392	★	6c Red Orange, Bluish (362). Reperf. at R. Very Fine appearance (Photo) .....	325.00
393	★	8c Olive Green, Bluish (363). Centered bit to right, Fine Example of this Rarity, with P. F. Certificate .....	(Photo) 6,000.00

394 ★	10c Yellow, Bluish (364). Fine .....	(Photo)	365.00
395	13c Blue Green, Bluish (365). Used, tiny tear, otherwise Fine .....	(Photo)	275.00
396 ★	15c Pale Ultramarine, Bluish (366). Centered to T. L. ....	(Photo)	300.00

#### 1909 COMMEMORATIVES

397 ★	2c Lincoln (367). B. Imprint, Small Solid Star & Plate No. 4984 Block of Six, small natural selvage barely touches Plate No., Fine-Very Fine .....		90.00
398 ★	2c Lincoln (367). L. Imprint, Small Solid Star & Plate No. 4979 Block of Six, small gum soak, otherwise Fine-Very Fine .....		90.00
399 ★	2c 1909 Commems (367, 370, 372). Mint Blocks, Fine-Very Fine .....		39.00
400 ★	2c Alaska-Yukon, Imperforate (371). R. Imprint & Plate No. 5250 Block of Six, wrinkles causing a few tiny thin spots, otherwise Very Fine .....		110.00
401 ★	2c Hudson-Fulton, Imperforate (373). T. Arrow & Center Line Blocks, latter without gum, faults .....		130.00

#### 1910 ISSUE

402 ★	3c Deep Violet (376). L. Imprint, Small Star & Plate No. 5428 Block of Six, Fine Block .....		45.00
403 ★	4c-12c 1910-14 Issues (377-378, 414, 417, 435). Blocks, some small faults, mostly Fine-Very Fine .....		94.00
404 ★	10c Yellow (381). Block, reperfed, Very Fine Appearance .....		62.00
405 ★	2c Carmine, Coil (388). Pair, 3mm spacing, right stamp creased, others Fine .....		165.00
406 ★	2c Carmine, Coil (393). Line Pair, Fine .....	(Photo)	40.00
407 ★	3c Deep Violet, Coil (394). Pair, 2mm spacing, Very Fine .....		28.00
408 ★	3c Deep Violet, Coil (394). Mint Line Strip of Four, R. stamp (not in line pair) has single short perf., otherwise Very Good-Fine .....		82.00
409 ★	5c Blue, Coil (396). Line Pair, Fine .....	(Photo)	55.00
410 ★	5c Blue, Coil (396). Mint Line Pair, Fine .....		55.00

#### PANAMA-PACIFIC ISSUE

411 ★	1c-2c Panama-Pacific (397-398). Mint Blocks, Very Good-Very Fine ....		33.25
412 ★	2c Lake, Panama-Pacific (398). Fine, Scarce .....	(Photo)	100.00
413 ★	5c Panama-Pacific (399). B. Margin Block with Plate No., centered to L., Fine Block .....		95.00
414 ★	5c Panama-Pacific (399). Block, faint corner bend, small filled thin, otherwise Fine .....		95.00
415 ★	5c Panama-Pacific (399). Block, Perfs. in at L. ....		95.00
416 ★	10c Orange, Panama-Pacific (400A). Block, few perfs. lightly strengthened, Fine-Very Fine .....	(Photo)	300.00

417	★	1c Panama-Pacific, Perf. 10 (401). R. Plate No. 6875 Block of Six, Mint, Top perfs. cut in .....	140.00
418	★	2c Panama-Pacific, Perf. 10 (402). Block, without gum, Fine .....	95.00
419	★	2c Panama-Pacific, Perf. 10 (402). Mint Block, reperfed at B., Fine Appearance .....	95.00
420	★	5c Panama-Pacific, Perf. 10 (403). B. Margin Block, centered to L. ....	250.00
421	★	5c Panama-Pacific, Perf. 10 (403). Block, bottom pair creased, others centered to B., Fine .....	250.00
422	★	10c Panama-Pacific, Perf. 10 (404). Regummed, perfs. cut in at top .....	300.00

### 1912 ISSUES

423	★	1c Green, 2c Carmine, Booklet Panes (405a-406a). Mint, Each with Plate No., Very Good-Fine .....	25.00
424	★	7c Black (407). Block, couple perfs. strengthened, Fine .....	72.50
425	★	1c Green, 2c Carmine, Imperforate, Kansas City Roulette (408-409 Var). Blocks, Very Fine .....	E. III
426	★	9c Salmon Red, 12c Claret Brown (415, 417). Blocks, Fine .....	53.50
427	★	15c Gray (418). Mint Blocks, Fine-Very Fine .....	50.00
428	★	20c Ultramarine (419). Block, faint suggestion of tiny thin spots in two, otherwise Fine .....	100.00
429	★	30c Orange (420). R. Plate No. 6911 Block of Six, Mint, Perfs touch at left .....	240.00
430	★	50c Violet, \$1.00 Brown (422-423). Regummed, centered to one side .....	170.00

### 1914-15 ISSUES — WATERMARKED

431	★	1c-20c 1914 Issue (424-438). Perfs touch on 6c & 8c, others Fine .....	122.05
432	★	1c-5c 1914 Issue (424-428). Blocks, 4c regummed, one with small thin spot, 5c gum slightly toned, otherwise Very Fine .....	67.70
433	★	5c Blue (428). B. Plate No. 6733 Block of Six, Mint, Very Good-Fine ....	67.50
434	★	20c Ultramarine (438). Block with Plate No., one has small thin, others Fine .....	135.00
435	★	30c Orange Red (439). Mint, Fine .....	42.50
436	★	50c Violet (440). Reperf. at R., Very Fine appearance ..... (Photo)	150.00
437	★	50c Violet (440). Heavy sealed broken crease, Fine Looking .....	150.00
438	★	1c-5c 1914 Coils (441-444, 447). Pairs, first is line pair, Fine-Very Fine .....	44.50
439	★	3c Violet, Coil (445). Paste Up Pair, perfs. touch, Scarce .....	125.00
440	★	4c Brown, Coil (446). Pair, centered slightly to R., Fine .....	65.00
441	★	4c Brown, Coil (446). Paste Up Pair, Fine .....	65.00
442	★	5c Blue, Coil (447). Mint Line Pair, Very Fine .....	23.50

443 ★	2c Red, Coil Ty. I (449). Joint Line Pair, tiny thin spot in top stamp, perfs. cut at B., Rare .....	(Photo) 1,400.00
444 ★	2c Red, Coil, Ty. I (453). Mint Pair, margin just clear at T., Fine (Photo) .....	72.50
445 ★	2c Carmine, Coil Ty. II (454). Joint Line Strip of Four, centered to R., Very Good-Fine .....	(Photo) 255.00
446 ★	3c Violet, Coil (456). Pair, Centered to right .....	(Photo) 100.00
447 ★	\$1.00 Violet Black (460). Part o. g., two short perfs., otherwise Fine .....	175.00

### 1916 ISSUE — UNWATERMARKED

448 ★	1c-20c 1916 Issue (462-466, 468-476). Few trivial faults, Mostly Fine-Very Fine .....	187.00
449 ★	3c Violet, 5c Blue (464, 466). Blocks, each has one stamp with small thin spot, hinge remnant, otherwise Fine-Very Fine .....	112.50
450 ★	5c Blue (466). T. Plate No. 7633 Block of Six, Mint, tiny surface scrape on one, otherwise Fine .....	140.00
451 ★	50c Violet (477). Top perfs. touch .....	(Photo) 190.00
452	50c Violet (477). Used Block of Six (3x2), few tiny faults, centered to B., Scarce .....	140.00
453 ★	\$1.00 Violet Black (478). Tiny thin spot, reperfed, Very Fine Appearance .....	175.00
454 ★	\$2.00 Dark Blue, \$5.00 Light Green (479-480). First couple partly blunted perfs., other small thin spot, otherwise Fine-Very Fine .....	120.00



455	2c Carmine Imperforate, Ty. Ia, Schermack Perforation Ty. III (482A). Neat pmk., light crease, small sealed tear at bottom, Fine Looking Example of this Elusive 20th Century Rarity .....	(Photo) 3,250.00
456 ★	3c Violet, Imperforate, Ty. II (484). Center Line & Four Arrow Blocks, Very Fine matched set .....	94.50
457 ★	5c Carmine, Imperforate, Error (485). L. Arrow Block of 36, with Double Error, Mint, Extremely Fine, a Gorgeous Showpiece of Great Rarity .....	(Photo) 7,000.00
458 ★	1c-10c 1916 Coils (486-487, 489-490, 492-497). Pairs, Fine-Very Fine ....	30.20
459	2c Carmine, Coil, Ty. II (491). Used, Fine .....	65.00

## 1917-20 ISSUES

460	★	2c Rose, Imperforate Vertically (499b). Block, faint thin in top pair, B. pair Fine .....	(Photo) 220.00
461	★	2c Deep Rose, Ty. Ia (500). Mint, perfs. in at L. ....	75.00
462	★	2c Deep Rose, Ty. Ia (500). Mint Block, Very Good .....	300.00
463	★	3c Violet, Ty. II, Double Impression (501d). Mint, centered to T. R., Scarce .....	75.00
464	★	3c Violet, Ty. I (501). T. Plate No. 8129 Block of Nine, Middle Stamp Double Transfer, Very Fine .....	<b>E. III</b>
465	★	3c Violet, Ty. II, Imperforate Horizontally (502c). Block of Six, Mint, small corner crease in one stamp, centered to left, Very Scarce, "Stanley Gibbons, Incor." handstamp guarantees .....	(Photo) 495.00
466	★	5c Rose, Error (505). Block of Nine, Middle Stamp the Error which has small surface rub & tiny pinhole, otherwise Fine .....	190.00
467	★	5c Rose, Error (505). Block of Twelve, Two Middle Stamps the Errors, Perfs in at R. Very Good .....	265.00
468	★	20c Light Ultramarine, Vertical Pair Imperf. Between (515b). Centered to T. L., Very Scarce .....	(Photo) 225.00
469	★	30c Orange Red (516). R. Plate No. 6899 Block of Six, without gum, Fine—Very Fine .....	70.00
470	★	50c Red Violet, \$1.00 Violet Brown (517–518). Blocks with Plate Nos., without gum, Very Fine .....	85.00
471	★	\$2.00 Orange Red & Black (523). Gum disturbed, Fine .....	(Photo) 125.00
472	★	\$5.00 Green & Black (524). Fine .....	55.00
473	★	\$5.00 Green & Black (524). Fine .....	55.00
474	★	1c Gray Green, Offset (525). T. Plate No. 9918 Block of Six, Imperforate Between Selvege & Top Row of Stamps, Very Fine, Scarce Variety .....	<b>E. IV</b>
475	★	1c–3c 1918–19 Offsets (525, 527–528, 530, 535–536). Blocks, includes #525 & 530 Double Impression, Plate No. Blocks of Six of #527, 528, 530, six of latter, all diff. Nos., Very Good–Very Fine .....	128.50
476	★	2c Carmine, Ty. V, VII (527, 528B). Plate No. Blocks of Six, Three of Each, All Diff. Nos., Very Good–Very Fine .....	93.00
477	★	1c Gray Green, Offset Imperforate (531). Center Line Block, small natural wrinkle, Very Fine .....	50.00
478	★	2c Carmine, Offset Imperforate, Ty. IV, VI (532, 534A). Blocks, Very Fine .....	76.00
479	★	2c Carmine, Offset Imperforate Ty. Va (534). Center Line Block, Very Fine .....	37.50
480	★	1c Green, 2c Carmine Rose, Rotaries, Normal & Imperf. Between (538, 538a, 540, 540a). Blocks, Very Good–Very Fine .....	46.75

***LOTS ON VIEW APRIL 30th, MAY 1st***  
***10 A. M. - 3 P. M. & MORNING OF SALE***

481	田	2c Carmine Rose, Rotary, Ty. II (539). Block, Neat 1919 Cancel. in Light Purple, Fine & Very Scarce, with P. F. Certificate, Cat. as singles (Photo)	900.00+
482	★田	3c Violet, Rotary (541). B. Margin Block of Eight (4 x 2), Fine-Very Fine	66.00
483		1c Green, Rotary (544). Light cancel., Fine, exceedingly Scarce, with P. F. Certificate (Photo)	675.00
484	★田	2c Carmine, Rotary (546). Block, small surface scrape on one, others Fine-Very Fine	62.50
485	★	\$2.00 Carmine & Black (547). Fine	42.50
486	★田	\$2.00 Carmine & Black (547). Center Line Block, Fine-Very Fine (Photo)	200.00
487	★田	1c-2c Pilgrim (548-549). Plate No. Blocks of Six, selvedge bit reduced on 2c, Very Good-Very Fine	105.00
488	★田	1c-5c Pilgrim (548-550). Blocks, 5c with Plate No., Very Good-Fine Set	86.50

#### 1922-26 ISSUES

489	★	½c-\$5.00 1922 Issue (551-573). Cpl. Set, hinge remnants, perfs. close on \$1.00, others Fine-Very Fine	135.06
490	★	½c-\$5.00 1922-25 Issues (551-573, 622-623). Cpl. Set incl. extra shades, 8c & \$5.00 tiny thin spots, others Fine	146.66
491	★	12c Brown Violet, Horizontal Pair, Imperf. Vertically (564a). Extra row of Horiz. Perfs., small internal tear, otherwise Very Fine, Rare, Most of the few known have faults (Photo)	500.00
492	★田	20c Carmine Rose, 30c Brown (569, 698). Blocks of Nine, 30c Double Transfer (16065 U. R. 52), 20c Cracked Plate, Both on Center Stamps, Very Good	86.00
493	★田	\$1.00 Violet Brown (571). Mint Block, Fine	30.00
494	★田	\$1.00 Violet Black, Violet Brown (571, 571a). Mint Blocks, one a trifle toned, otherwise Fine-Very Fine	60.00
495	★田	\$1.00 Violet Brown (571). T. Plate No. 18680 Block of Six, Mint, Perfs. in at L. Very Good	100.00
496	★田	\$2.00 Deep Blue (572). Block, Very Fine	85.00
497	★	\$5.00 Carmine & Blue (573). Mint, Very Fine	37.50
498	★田	\$5.00 Carmine & Blue (573). Center Line Block, faint trivial toned spots on gum from hinges, nevertheless Very Fine (Photo)	200.00
499	★田	1c Green, 1½c Yellow Brown, Imperforate (575-576). Center Line Blocks, Very Fine	45.00
500	★田	1c Green, 2c Carmine, Rotary (578-579). Blocks, Very Good	85.00



409



412



434



444



446



451



443



445



471



468



516



483



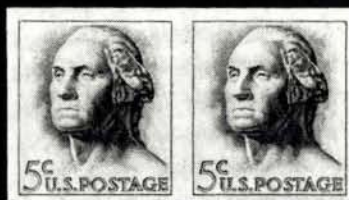
491



518



548



534



533



540



551



501

503

- 501 **1c Green, Rotary (594).** Neat Machine Cancel, Fine, better than usual example of this Rare Stamp, with P. F. Certificate ..... **(Photo)** 1,250.00
- 502 ★ **2c Carmine, Rotary (595).** Mint, Fine ..... 30.00
- 503 **1c Green, Rotary (596).** "Kansas City, Mo." Precancel, centered to bottom right, very light vertical crease, really trivial when considering the Extreme Rarity of this Stamp, only about six copies believed to exist, with P. F. Certificate ..... **(Photo)** 9,000.00
- 504 ★ **1c-10c 1923 Coils (597-599, 600-606).** Joint Line Pairs, Nearly All Mint, Fine-Very Fine ..... 30.50
- 505 ★ **2c Carmine, Coil, Ty. II (599A).** Mint Pair, centered to R. .... 95.00
- 506 ★田 **2c Harding, Rotary (612).** T. R. Plate No. 14938 Block, Mint, centered a trifle to B., Fine for this ..... **(Photo)** 165.00



- 507 **2c Harding Rotary, Perf. 11 (613).** Light machine cancel, Centered a bit to right bottom. A Fine & Attractive Example of this outstanding Rarity of which only about only Fifteen to Twenty Exist, with P. F. Certificate ..... **(Photo)** 6,000.00
- 508 ★田 **1c-5c Huguenot-Walloon (614-616).** Blocks. Fine-Very Fine Set ..... 73.50
- 509 ★田 **1c-5c Lexington Concord (617-619).** L. Plate No. Blocks of Six, 1c dry gum, 2c Mint, perf. bit close on 5c, Fine Set ..... 163.50
- 510 ★田 **2c-5c Norse-American (620-621).** Center Line Blocks, Fine-Very Fine Set ..... 57.00
- 511 ★田 **13c Green, 17c Black (622-623).** Mint Plate No. Blocks of Six, Fine .... 55.00
- 512 ★ **2c White Plains Souvenir Sheet (630).** Mint, Fine ..... 125.00

## 1926 ISSUES — TO DATE

513	★	1½c Yellow Brown, Imperforate (631). Mint Cross Gutter Block of 16, Very Fine .....	33.30
514	★	1½c Yellow Brown, Imperforate (631). Horiz. & Vert. Gutter Blocks, Cross Gutter Block of 16, staple hole in one not affecting cross gutter, otherwise Very Fine .....	41.30
515	★	1c-50c 1926-31 Issues (632-642, 692-701). Blocks, Nearly All Mint, Mostly Very Fine .....	125.50
516	★	2c Carmine, Ty. II (634A). Plate No. Single, Fine ..... (Photo)	115.00+
517	★	2c Carmine, Ty. II (634A). Mint, Perfs. in at B. Very Good .....	115.00
518	★	7c Black, Horizontal Pair Imperf. Between (639a). Centered to L., Scarce (Photo) .....	100.00
519	★	2c Edison, Coil (656). Joint Line Pair & Strip of Four, tiny thin spot in one of first, strip Very Good .....	68.50
520	★	1c-10c Kans. Overprints (658-668). 2c, 3c & 10c small faults, others Very Good-Very Fine .....	70.95
521	★	1c-10c Kans. Overprints (658-668). Blocks, Fine-Very Fine Set, Mostly Very Fine .....	296.40
522	★	1c-10c Nebr. Overprints (669-679). Blocks, Fine-Very Fine Set, Mostly Very Fine .....	315.70
523	★	15c-30c 1931 Issue (696, 698, 700). Plate No. Blocks, 30c is Block of Six with Cracked Plate (20552 U. R. 30), 20c small crease in two, others Very Good-Very Fine .....	85.25
524	★	50c Lilac (701). T. L. Plate No. 20554 Block, Mint, Fine .....	50.00
525	★	½c-10c Bicentennials (704-715). Plate No. Blocks, selvedge reduced on 5c, 9c & 10c, Fine-Very Fine .....	202.25
526	★	3c Wisconsin, Imperforate Horizontally (739a). L. Half Arrow Block, four rows of freak vertical perfs., normal cat. \$300.00+ ..... (Photo)	—
527	★	\$1.00 Presidential, Watermarked "USIR" (832b). Mint, Fine .....	40.00
528	★	\$1.00 Presidential, Imperf. Horizontally (832d). Pair, light gum creases, otherwise Very Fine, Rare ..... (Photo)	450.00
529	★	\$5.00 Presidential (834). Plate No. Block, Very Fine ..... (Photo)	200.00
530	★	\$5.00 Presidential (834). B. Margin Block with Arrow Marker which is Inverted and Shifted Far to the Left of its Correct Position, Very Fine, Interesting Variety .....	100.00+
531	★	3c Defense, Imperf. Between Vertically (901a). Two Mint Blocks, one pair has single perf., Very Fine .....	36.00+
532	★	4c Red Violet, Coil, Imperforate (1058a). Mint Pair, centered to T., Scarce .....	100.00
533	★	4c Seato, Vertical Pair Imperf. Between (1151a). Mint, Very Fine (Photo) .....	200.00

534 ★	5c Blue Gray, Coil, Imperforate (1229b). Mint Pair, Very Fine .... (Photo)	450.00
535 ★	5c Christmas with Vertical Gutter (1240 Var). Reconstructed Horiz. Strip of Five, Pair with Gutter has Complete Stamp at R., 85% of other stamp at L., Very Fine, Unusual & Striking .....	E. V

### AIR POST STAMPS

536 ★	6c Orange, Air Post (C1). Block, tiny preprint wrinkle, Fine .....	97.50
537 ★	16c Green, Air Post (C2). Block, few short perfs. on one, others Very Fine .....	160.00
538 ★	16c Green, Air Post (C2). L. Arrow Block, Fine .....	165.00
539 ★	16c Green, Air Post (C2). Center Line Block, Fine ..... (Photo)	175.00
540 ★	24c Carmine Rose & Blue, Air Post (C3). Plane Shifted Down & Forward (Wheels & Wingtip Touch Frame), Very Fine ..... (Photo)	35.00+
541 ★	24c Carmine Rose & Blue, Air Post (C3). Block, faint thin spots, Very Fine Appearance .....	140.00
542 ★	24c Carmine Rose & Blue, Air Post (C3). Arrow, Blue & Red "Top" & Double Plate No. Block of Twelve, three separated blocks rejoined, tiny thin spot in selvage, centered to top .....	505.00+



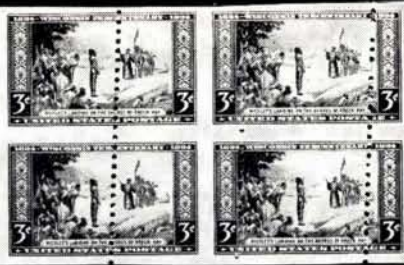
543 ★	24c Carmine Rose & Blue, Center Inverted (C3a). Fine Example of this Most Famous & Popular Error ..... (Photo)	35,000.00
544 ★	8c Dark Green, Deep Green, Air Post (C4). Blocks, Fine-Very Fine .....	96.00
545 ★	8c Dark Green, Deep Green, Air Post (C4). Blocks, Fine-Very Fine .....	96.00
546 ★	16c Dark Blue, Air Post (C5). Block, Very Fine ..... (Photo)	132.50
547 ★	24c Carmine, Air Post (C6). Block, Fine-Very Fine ..... (Photo)	150.00
548 ★	10c Lindbergh, Air Post Booklet Pane (C10a). Complete Unexploded Booklet, Fine-Very Fine .....	70.00+
549 ★	65c Graf Zeppelin (C13). Regummed, Fine .....	125.00
550 ★	\$1.30 Graf Zeppelin (C14). Small sealed tear, otherwise Very Fine .....	200.00
551 ★	\$2.60 Graf Zeppelin (C15). Very Fine ..... (Photo)	325.00
552 ★	65c-\$2.60 Graf Zeppelin (C13-C15). Blocks with Plate Nos., few small natural gum skips, Fine-Very Fine Set ..... (Photo)	2,725.00
553 ★	50c Chicago Zeppelin (C18). Mint Margin Single, Very Fine .....	50.00
554 ★	50c Chicago Zeppelin (C18). Mint Block, natural gum wrinkles, Fine Block .....	210.00



465



481



526



529



486



498



539



546



547



556



552

- 555 ★ 50c Chicago Zeppelin (C18). Block with Plate No., Mint, couple small natural gum skips, Fine ..... 210.00
- 556 ★ 6c Dark Blue & Carmine, Air Post, Imperf. Horizontally (C23a). Center Line Block, Fine-Very Fine, "Kessler" handstamp guarantees, Unpriced as Center Line Block, Extremely Rare ..... (Photo) 350.00+
- 557 ★ 6c Ultramarine & Carmine, Air Post Error of Color (C23c). Very Fine .... 75.00

#### SPECIAL DELIVERY — BALANCE OF COLLECTION

- 558 ★ 10c 1885-93 Special Delivery (E1-E3). Fresh, o. g., #E1 tiny thin spot, #E2 faults, other Fine ..... 92.00
- 559 ★ 10c-20c 1911-51 Special Delivery, Registration (E11-E19, F1). #E19 is Plate No. Block, #F1, Mint, centered to R., others Fine-Very Fine ..... 108.15
- 560 ★ 2c-\$2.00 Offices in China (K1-K18). Few tiny hinge remnants, Fine-Very Fine ..... 160.00
- 561 ★ 1c-25c Parcel Post Due (JQ1-JQ5). 2c centered to right, others Fine .... 42.75
- 562 ★ Balance of U. S. Collection, 1851-1935, 355 Mostly Unused Stamps Arranged on Stock Cards, Wide Range of Issues, Includes Regulars, Coils, Commems, Booklet Panes, Blocks, Couple Plate No. Blocks, few duplicates, mixed condition, many Fine-Very Fine, Interesting, Useful ..... E. XI

END OF SALE — THANK YOU

### A REMINDER

Mails are often slow. After nearly every auction we receive some 25 to 50 late bid sheets, many of which would have been successful. We can only repeat . . . **PLEASE MAIL YOUR BIDS EARLY!** Use Air Mail if you are in doubt as to being on time.

## IS YOUR COLLECTION FOR SALE?

REALIZE IMMEDIATE CASH  
PLUS THE ADDED ADVANTAGE OF  
SELLING THROUGH OUR AUCTIONS

We will advance immediate cash up to 75% of our appraisal value, of what your collection should realize at auction. There is no interest charge.

Your collection will then be sold in one of our coming auction sales. All stamps are expertly and advantageously lotted in attractive, well illustrated catalogs. Lotting is meticulously planned under our personal supervision. Commission is 20% of the gross realization. There is no lotting fee or any other charges. Final settlement is made within five weeks after the sale. We have been continuously conducting stamp auctions in the United States for over forty-three years.

Valuable collections and stamp holdings are especially wanted, but we will accept properties valued from \$500 upwards. Send all stamps direct for appraisal. Auction advance will be remitted shortly after receipt. If not entirely pleased, stamps will be returned at our expense. If circumstances warrant due to bulk or value, we will travel anywhere to inspect important properties.

ROBERT A. SIEGEL  
AUCTION GALLERIES, Inc.

(Licensed and Bonded Auctioneer)

120 EAST 56th STREET  
NEW YORK, N. Y. 10022

(Tel. 753-6421)

## CONDITIONS OF SALE

1. The terms of sale are strictly cash on delivery to the highest bidder unless special arrangements have been made prior to the sale.
2. All bids are per lot as numbered in the catalogue unless otherwise announced by the auctioneer at the time of sale. The right is reserved to group two or more lots; to withdraw any lot or lots from the sale, or to act in behalf of the seller. The auctioneer shall regulate the bidding and in the event of any dispute his decision shall be final.
3. Any lot, the description of which is incorrect is returnable, but only within five days of receipt and in any case it must be received by the auctioneer within four weeks from the date of the auction. All disputed lots must be returned intact as received and the following lots may not be returned for any reason whatsoever: Lots containing ten or more stamps; Lots from buyers who have had the opportunity to examine them before the sale; Lots described as having defects or faults may not be returned because of faults. No illustrated lots may be returned because of centering, margins or other factors shown in the illustrations.
4. Successful bidders, unless they are known to us or supply acceptable references are expected to make payment in full before the lots are delivered. Mail bidders will be notified of the amount of their purchases. We reserve the right in our sole and absolute discretion to demand cash payment at the time a lot is knocked down to any bidder who has not previously established credit with us or whose account is in arrears. In the event any buyer refuses to pay cash for any lot at the time it is knocked down to him, the auctioneer reserves the right to re-offer the lot immediately for sale to the highest bidder.
5. If the purchase price has not been paid within the time limit, nor lots taken up within seven days from date of sale they must be resold and any loss arising from such sale will be charged to the defaulter. Any account more than thirty days in arrears is subject to a late payment charge of 1½% per month so long as the account remains in arrears.
6. All lots are sold as genuine but should any lot be proved otherwise by written opinion of any competent, responsible authority acceptable to us, immediate refund of the full purchase price will be made, provided that such claim is made within 25 days from date of sale. If claim is not made within this period, no lots are returnable for any reason at any time. So long as we are notified within the 25 day period that an opinion is being sought the matter will remain open until such opinion is rendered. We will not be responsible for any charges incurred by the buyer for expertization fees and costs unless the opinion states the item is not genuine, in which case we will pay a maximum fee of \$10.00 for each such item.
7. Until paid in full, all lots remain the property of Robert A. Siegel Auction Galleries, Inc. in behalf of the seller.
8. All forwarding charges will be added to the purchase price. The mode of shipment shall be at our option unless we are given specific instructions.
9. Lots may be sent for inspection to buyers known to us upon written application. All such lots must be returned to us by registered mail, adequately insured and within 24 hours after receipt. The applicant assumes all responsibility and for insurance against all risks from time of receipt until they are actually received back by us, and is to pay all expenses of postage and insurance. No lots can be sent for inspection within ten days of the date of sale. Large lots and collections cannot be sent for inspection.
10. The placing of a bid shall constitute acceptance of the foregoing conditions of sale.

**ROBERT A. SIEGEL**

**SYLVESTER COLBY**, Licensed Auctioneers

## DESCRIPTIONS

**EXTREMELY FINE:** The finest condition for noteworthy, outstanding copies.

**VERY FINE: (V.F.)** In prime condition such as to satisfy the requirements of particular collectors.

**FINE: (F)** Perforations or margins do not touch design on issues after 1890 but in some cases may just touch in earlier issues. If used, fairly light cancellation.

**VERY GOOD: (V.G.)** Generally nice appearance but margins or perforations may cut in slightly.

**GOOD:** Average off-centering or fairly attractive with slight defects.

**ORIGINAL GUM** is not to be expected on 19th century stamps unless so stated in the description.

**MINT:** With original gum and never hinged.

Scott 1973 Specialized Catalog used for cataloguing lots of U.S. & Possessions. Scott 1973 Standard Catalogue for others. Use of other catalogs noted in the descriptions.

## THE SKY IS THE LIMIT!

---

AN INVESTING CLIENT WANTS US TO PURCHASE  
FOR HIM FINE STAMPS TO A MILLION DOLLARS  
AND MORE !

HIS INTERESTS HAVE NOW EXPANDED TO IN-  
CLUDE FOREIGN AS WELL AS UNITED STATES  
STAMPS.

PARTICULARLY DESIRED ARE RARITIES AND SPE-  
CIALIZED COLLECTIONS AND HE IS FULLY AWARE  
OF THE STRENGTH OF THE PRESENT MARKET.

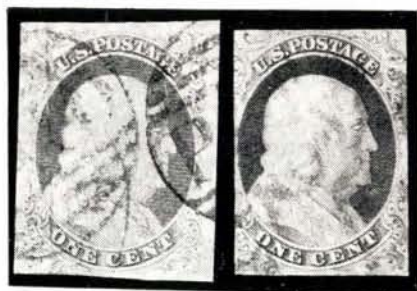
OUR CHECK BOOK IS OPEN . . . WE AWAIT YOUR  
OFFERS.

ROBERT A. SIEGEL, Inc.

*Robert A. Siegel*

**AUCTION GALLERIES, INC.**

120 East 56th STREET  
NEW YORK CITY, N. Y. 10022  
Tel.: (212) 753-6421



1851, Type I



Grilled All Over



Special Printings



Bluish Papers



Inverted Centers

# ROBERT A. SIEGEL AUCTION GALLERIES, Inc.

120 EAST 56TH STREET  
NEW YORK, N. Y. 10022

431ST SALE

PRICES REALIZED

MAY 2ND, 1973

UNITED STATES STAMPS

GROSS REALIZATION \$308,222.00

1	1400.00	47	18.00	93	220.00	139	32.50	185	1150.00	231	50.00
2	75.00	48	30.00	94	47.50	140	45.00	186	55.00	232	14.00
3	40.00	49	200.00	95	18.00	141	72.50	187	230.00	233	95.00
4	23.00	50	26.00	96	32.50	142	210.00	188	55.00	234	2200.00
5	170.00	51	47.50	97	26.00	143	725.00	189	25.00	235	3400.00
6	200.00	52	45.00	98	24.00	144	85.00	190	2300.00	236	3400.00
7	50.00	53	17.00	99	42.50	145	80.00	191	130.00	237	1650.00
8	115.00	54	50.00	100	75.00	146	30,000.00	192	95.00	238	575.00
9	500.00	55	29.00	101	80.00	147	24,000.00	193	37.50	239	1700.00
10	160.00	56	52.50	102	42.50	148	23,000.00	194	10.00	240	1000.00
11	50.00	57	450.00	103	80.00	149	62.50	195	11.00	241	1700.00
12	35.00	58	260.00	104	28.00	150	17,500.00	196	8.50	242	1100.00
13	32.50	59	100.00	105	85.00	151	375.00	197	80.00	243	1400.00
14	24.00	60	13.00	106	30.00	152	37.50	198	23.00	244	1800.00
15	21.00	61	52.50	107	35.00	153	45.00	199	47.50	245	4750.00
16	120.00	62	37.50	108	85.00	154	37.50	200	15.00	246	14,000.00
17	52.50	63	170.00	109	35.00	155	425.00	201	15.00	247	85.00
18	125.00	64	210.00	110	180.00	156	22.00	202	75.00	248	5500.00
19	47.50	65	40.00	111	42.50	157	125.00	203	13.00	249	24.00
20	425.00	66	35.00	112	120.00	158	32.50	204	26.00	250	47.50
21	125.00	67	30.00	113	40.00	159	180.00	205	25.00	251	8.00
22	90.00	68	22.00	114	80.00	160	725.00	206	12.00	252	8.00
23	125.00	69	65.00	115	575.00	161	250.00	207	45.00	253	20.00
24	220.00	70	52.50	116	270.00	162	475.00	208	50.00	254	42.50
25	120.00	71	80.00	117	425.00	163	425.00	209	37.50	255	32.50
26	62.50	72	425.00	118	210.00	164	400.00	210	140.00	256	425.00
27	70.00	73	50.00	119	625.00	165	750.00	211	35.00	257	425.00
28	160.00	74	95.00	120	5250.00	166	130.00	212	15.00	258	4750.00
29	2200.00	75	95.00	121	60.00	167	55.00	213	13.00	259	375.00
30	2100.00	76	200.00	122	3500.00	168	21.00	214	100.00	260	17.00
31	500.00	77	26.00	123	1150.00	169	100.00	215	400.00	261	24.00
32	100.00	78	57.50	124	105.00	170	26.00	216	28.00	262	72.50
33	30.00	79	16.00	125	4750.00	171	90.00	217	120.00	263	32.00
34	19.00	80	30.00	126	4000.00	172	23.00	218	85.00	264	42.50
35	55.00	81	170.00	127	500.00	173	32.50	219	2400.00	265	52.50
36	325.00	82	18.00	128	52.50	174	100.00	220	600.00	266	30.00
37	500.00	83	26.00	129	18.00	175	32.50	221	2800.00	267	20.00
38	50.00	84	52.50	130	18.00	176	1600.00	222	1700.00	268	65.00
39	26.00	85	200.00	131	150.00	177	90.00	223	1550.00	269	67.50
40	40.00	86	30.00	132	47.50	178	40.00	224	750.00	270	40.00
41	57.50	87	135.00	133	575.00	179	62.50	225	1700.00	271	60.00
42	47.50	88	105.00	134	52.50	180	115.00	226	2200.00	272	40.00
43	85.00	89	52.50	135	85.00	181	12.00	227	1750.00	273	75.00
44	37.50	90	17.00	136	350.00	182	280.00	228	3750.00	274	55.00
45	20.00	91	19.00	137	170.00	183	25.00	229	18.00	275	35.00
46	19.00	92	110.00	138	13.00	184	85.00	230	105.00	276	170.00

277	40.00	335	52.50	393	2600.00	451	40.00	509	55.00
278	47.50	336	60.00	394	260.00	452	28.00	510	37.50
279	105.00	337	67.50	395	145.00	453	29.00	511	42.50
280	220.00	338	42.50	396	160.00	454	37.50	512	85.00
281	26.00	339	325.00	397	45.00	455	1400.00	513	14.00
282	145.00	340	190.00	398	47.50	456	52.50	514	13.00
283	35.00	341	100.00	399	30.00	457	5750.00	515	72.50
284	2000.00	342	1500.00	400	40.00	458	45.00	516	72.50
285	62.50	343	1200.00	401	26.00	459	62.50	517	17.00
286	26.00	344	150.00	402	30.00	460	75.00	518	26.00
287	35.00	345	900.00	403	23.00	461	14.00	519	21.00
288	30.00	346	950.00	404	35.00	462	55.00	520	24.00
289	52.50	347	57.50	405	110.00	463	47.50	521	170.00
290	16.00	348	95.00	406	35.00	464	23.00	522	180.00
291	50.00	349	60.00	407	26.00	465	135.00	523	14.00
292	250.00	350	18.00	408	50.00	466	42.50	524	32.50
293	27.00	351	75.00	409	65.00	467	90.00	525	70.00
294	500.00	352	170.00	410	60.00	468	105.00	526	32.50
295	70.00	353	37.50	411	13.00	469	28.00	527	27.00
296	70.00	354	105.00	412	150.00	470	25.00	528	350.00
297	525.00	355	950.00	413	40.00	471	65.00	529	160.00
298	90.00	356	210.00	414	30.00	472	35.00	530	105.00
299	52.50	357	1650.00	415	18.00	473	35.00	531	16.00
300	475.00	358	1250.00	416	180.00	474	24.00	532	50.00
301	700.00	359	850.00	417	32.50	475	47.50	533	170.00
302	180.00	360	60.00	418	40.00	476	37.50	534	375.00
303	1500.00	361	26.00	419	42.50	477	26.00	535	15.00
304	900.00	362	21.00	420	70.00	478	42.50	536	52.50
305	23.00	363	1250.00	421	52.50	479	20.00	537	95.00
306	13.00	364	37.50	422	62.50	480	11.00	538	115.00
307	375.00	365	52.50	423	50.00	481	1500.00	539	110.00
308	55.00	366	22.00	424	37.50	482	50.00	540	105.00
309	57.50	367	60.00	425	28.00	483	550.00	541	72.50
310	62.50	368	32.50	426	29.00	484	23.00	542	170.00
311	40.00	369	45.00	427	27.00	485	24.00	543	27,000.00
312	105.00	370	11.00	428	52.50	486	105.00	544	62.50
313	11.00	371	50.00	429	60.00	487	35.00	545	60.00
314	135.00	372	45.00	430	62.50	488	21.00	546	120.00
315	57.50	373	80.00	431	55.00	489	72.50	547	140.00
316	45.00	374	19.00	432	28.00	490	65.00	548	80.00
317	270.00	375	26.00	433	15.00	491	65.00	549	72.50
318	45.00	376	32.50	434	42.50	492	37.50	550	105.00
319	55.00	377	37.50	435	20.00	493	19.00	551	230.00
320	400.00	378	32.50	436	75.00	494	36.00	552	1650.00
321	950.00	379	60.00	437	16.00	495	37.50	553	35.00
322	45.00	380	47.50	438	21.00	496	62.50	554	100.00
323	15.00	381	20.00	439	32.50	497	45.00	555	110.00
324	60.00	382	230.00	440	40.00	498	150.00	556	350.00
325	72.50	383	90.00	441	37.50	499	18.00	557	62.50
326	70.00	384	22.00	442	65.00	500	16.00	558	28.00
327	18.00	385	55.00	443	800.00	501	1050.00	559	42.50
328	55.00	386	65.00	444	62.50	502	25.00	560	105.00
329	45.00	387	67.50	445	115.00	503	4750.00	561	32.50
330	55.00	388	50.00	446	67.50	504	32.50	562	280.00
331	32.50	389	115.00	447	45.00	505	52.50		
332	26.00	390	35.00	448	80.00	506	90.00		
333	50.00	391	2600.00	449	42.50	507	3750.00		
334	23.00	392	105.00	450	50.00	508	40.00		