

198th SALE

UNITED STATES

NINETEENTH CENTURY STAMPS AND COVERS

INCLUDING STAMPLESS COVERS

POSTMASTER PROVISIONALS

1847 ISSUE THROUGH 1869 ISSUE

2c BLACKJACK COLLECTION

CONFEDERATE STATES

AT PUBLIC AUCTION

FRIDAY, MARCH 1st, 1957

2 P. M.

Robert A. Siegel
AUCTIONS

489 FIFTH AVENUE

NEW YORK 17, N. Y.

Tel. MUrray Hill 2-0980

CONDITIONS OF SALE

1. The terms of sale are strictly cash to the highest bidder. All buyers are expected to pay for lots within three days of receipt, unless special arrangements have been made prior to the sale.
2. All bids are per lot as numbered in the catalogue and not per piece, unless otherwise announced by the auctioneer at the time of sale.
3. Any lot the description of which is incorrect is returnable only within three days of receipt. All disputed lots must be returned intact as received. Lots containing five or more stamps are not returnable at any time. No lots may be returned by purchasers who have had the opportunity to examine them before the sale.
4. Successful mail bidders, unless they are known to us or supply acceptable references, will be notified of the amount of the lots secured for them, and are expected to send payment in full before the lots are forwarded.
5. If the purchase price has not been paid within the time limit, or lots taken up within seven days from date of sale, they may be resold and any losses arising from such sale charged to the defaulter.
6. All stamps are sold as genuine, except where sold "As Is". Claims for any lot proving otherwise, must be made within two weeks from date of sale.
7. The right is reserved to group two or more lots, also withdraw any lot or lots from the sale, or to act on behalf of the seller.
8. Until paid for in full all lots remain the property of Robert A. Siegel.
9. No commission is charged for buying at our sales, but all forwarding charges will be added to the purchase price.
10. Lots will be sent for inspection, provided such lots are returned to us the same day as received. Postage and registration both ways will be charged. Approximate values of lots will be given on request.
11. The placing of a bid shall constitute acceptance of the foregoing conditions of sale.

ROBERT A. SIEGEL

GREGORY MOZIAN, Licensed Auctioneers

In sending bids, always state the highest price you are prepared to pay for the lot. Your limit will not be used as a starting bid unless absolutely necessary.

DESCRIPTIONS

Superb—the finest condition for noteworthy, outstanding copies.

Very Fine (VF)—means that there is a slight deviation from the above.

Fine (F)—means that the perforations do not touch the design on issues after 1890, but in some cases may just touch in earlier issues; if used, fairly lightly cancelled.

Very Good (VG)—means that the appearance is generally fine but that the perforations cut the design slightly.

Good (G)—means average off-centering; or fairly attractive with slight defects
Original gum is not to be expected on 19th Century stamps up to 1888 unless so stated.

Scott's 1957 Specialized United States Catalogue is used for cataloging our lots of United States and Scott's Standard Catalogue, 1957 for others.

WE SOLICIT FINE MATERIAL FOR FUTURE SALES

[illegible]

ESTIMATES

Our sales contain many 19th Century covers and fancy cancellations. We have had many requests to give the estimated cash value on these lots. We are trying to place a fair net valuation on each lot as a guide for bidding when no catalogue value portrays the true value. The chart below will be used, for example E. IV means our estimate cash value on this lot is \$30.00 to \$40.00. Lots may actually realize more or less than these estimates and under no circumstances are these estimates to be considered reserves but merely a guide to bidding.

E. I	up to \$ 10.00	E. VIII	\$100.00 to \$150.00
E. II	\$ 10.00 to \$ 20.00	E. IX	\$150.00 to \$200.00
E. III	\$ 20.00 to \$ 30.00	E. X	\$200.00 to \$250.00
E. IV	\$ 30.00 to \$ 40.00	E. XI	\$250.00 to \$350.00
E. V	\$ 40.00 to \$ 50.00	E. XII	\$350.00 to \$500.00
E. VI	\$ 50.00 to \$ 75.00	E. XIII	\$500.00 to \$750.00
E. VII	\$ 75.00 to \$100.00	E. XIV	\$750.00 to \$1000.00
		E. XV	over \$1000.00

UNITED STATES

STAMPLESS COVERS

1	☒ Albion, Orleans Co. N. Y. in red circle (1830) Fine	E. I
2	☒ Ashtabula, O. black straight line (1832) Very Fine	E. II
3	☒ Bethlehem, Ct. and Paid 3 in red circles on small cover, V. F.	E. I
4	☒ Black Rock, N. Y. Str. line in Rectangle, (1830) Fine	E. I
5	☒ Brooks Grove, N. Y. red str. line (1848) Fine	E. I
6	☒ Bucksport, Me. blue straight line, contains interesting Temperance circular, Fine	E. II
7	☒ Buffalo, N. Y. in Blue Circle, Blue Steamboat in fancy Scroll, Fine	E. I
8	☒ C. Valley, N. Y. in red str. line (1827) Fine	E. I
9	☒ Clarksfield, O. red circle, fancy Paid C III on embossed ladies envelope, V. F.	E. I
10	☒ Easton, Pa. March 21 black str. line (1831) Very Fine	E. II

11	✉	Elizabethtown, N. Y. black str. line (1839) Fine	E. I
12	✉	Fairfield, N. Y. Red Str. Line (1832) Fine	E. I
13	✉	Galway, N. Y. black str. line (1846) V. F.	E. I
14	✉	Housatonic Railroad 5 in red double circle, (1847) Fine	E. II
15	✉	Hudson (N. Y.) May 4 (1797) Str. Line, ms "12½", Fine	E. I
16	✉	Hudson Riv. Mail, N. Y. in Red Circle, Red 5, Fine	E. I
17	✉	Hyde Park, N. Y. red str. line, "Paid" (1832), V. F.	E. II
18	✉	Johnstown, N. Y., Black Str. Line, Paid & ms. Paid 30 cancels, (1819), F.	E. II
19	✉	Knoxville, Pa. black circle, "Free" and printed label "Hiram Freeborn, P. M.", Fine	E. I
20	✉	Lansingburgh (N. Y.) Str. Line pmk, Fine	E. I
21	✉	Lawrenceville, N. Y. red str. line, Paid 5, (1845) V. F.	E. II
22	✉	Lex. K. Oct. 2 black straight line, Fine	E. I
23	✉	Lima, N. Y. black str. line (1828) Fine	E. I
24	✉	Little Falls, Herk. Co., N. Y. Str. Line (1831) Fine	E. II
25	✉	Lockport, N. Y. Str. Line in Red Rectangle, Fine	E. II
26	✉	Lynch. June 24 (Lynchburg, Va.) black str. line, (1804) V. F.	E. II
27	✉	Moriah, N. Y., Feby 15 in Red Str. Line, (1841) Fine	E. I
28	✉	Morristown, N. Y. Str. Line in Box (1850) Very Fine	E. II
29	✉	New York 1/6, 2/6 in manuscript (1781), Colonial, Fine	E. II
30	✉	N. Y. & Erie R. Road in Red Circle, Red "5", Fine	E. I
31	✉	Portsmouth, September 10 black str. line (1794), V. F.	E. I
32	✉	Portsmouth, N. H. Sept. 18 black str. line (1810) Fine	E. I
33	✉	Rail Road Bold Red Str. Line, Red Paid in fancy scroll, V. F.	E. II
34	✉	Rail-Road in Red Arc, red Steam Boat scratched out, Fine	E. I
35	✉	Rail Road in Red frameless circle, (1842) from Utica, N. Y., Fine	E. I
36	✉	Rail Road Car, Red Str. Line (1847) Very Fine	E. II
37	✉	Railroad Car, red str. line, from New Lebanon Springs, N. Y. (1844) Fine	E. I
38	✉	Richmond, Oct. 6 black str. line between bars, (1790), V. F.	E. II
39	✉	Ric. im'd, June 20, 1796 black str. line between bars, Fine	E. I
40	✉	Rochester, N. Y. red circle on folded letter having Masonic watermark, V. F.	E. I
41	✉	S. B. P. M. Streck, clear Packetboat marking in red scalloped rectangle, faint Steam 5 on cover to New Orleans	E. II

42	✉	Sandy Creek, N. Y. black str. line, Very Fine	E. II
43	✉	Schoharie Courthouse, N. Y. in large red frameless circle "Free", V. F.	E. I
44	✉	Schaharie CH, N. Y. black str. line (1833), Very Fine	E. II
45	✉	Schoharie C. H. N. Y. black str. line "Paid" (1839), Fine	E. I
46	✉	Schoharie C. H., N. Y. Str. Line, ms "Military", Very Fine	E. II
47	✉	Schuylerville, N. Y. Str. Line (1843) Very Fine	E. II
48	✉	Seneca Falls, N. Y. Str. Line (1824), Very Fine	E. II
49	✉	Troy & New York Steam Boat in Blue Rectangle, Blue 7cts in circle, V. F. (Photo)	E. IV
50	✉	Troy & Whitehall R. R. in blue circle, "5", Very Fine	E. II
51	✉	Twinsburgh, O., blue circle, large arched Paid 3 on beautiful large Val- entine cover with many illustrations both front and back shows Lovers, Castles, Boat etc. Most attractive, V. F.	E. V
52	✉	U. S. Mail City Delivery cancel on Patriotic cover, V. F.	E. II
53	✉	Vernon, N. Y. June 3 Red Str. Line, (1830) Very Fine	E. II
54	✉	War of 1812 Rates, Collection of 30 diff. stampless covers of this period written up, interesting collection	E. VIII
55	✉	Whitehall, Mar. 5, N. Y. Red Str. Line, red Paid 10, Very Fine	E. I

POSTMASTER PROVISIONALS

56	✉	Annapolis, Md., Blue Circular Eagle Design (2xU1) var.) ms. "2", Local Use of Provisional Design Handstamp, Fine	(Photo) 750.00
57	✉	Baltimore, Md., 5c Black on Bluish (3x3) Blue Paid cancel on stamp, Blue Baltimore cancel on cover, Very Fine	(Photo) 2000.00
58	✉	Baltimore, Md., 5c Blue on Buff Postmasters Provisional (3xU2) clear strikes, small light age stain from sealing wax, Very Fine	(Photo) 1000.00

NEW YORK POSTMASTER PROVISIONALS

59	★	5c Black (9x1). Margins all around, position 11, Very Fine	(Photo) 150.00
60	★	5c Black (9x1). Margins all around, position 21, Very Fine	(Photo) 150.00
61	★	5c Black (9x1). Position 35, Fine	(Photo) 150.00
62	★	5c Black (9x1). Margins all around, position 25, tiny nick at T., V. F. appearing	(Photo) 150.00
63	★	5c Black (9x1). Margins all around, position 10, small thin in margin, V. F. appearing	(Photo) 150.00
64	★	5c Black (9x1). Tiny thin, position 8, Fine appearing	150.00

65 ★	5c Black (9x1). Horiz. Pair, margins all around, positions 18 & 19, Very Fine (Photo)	500.00
66 ★	5c Black (9x1). Horiz. Pair, Margins all around though close at places, positions 12-13, one stamp ironed crease, other V.F. (Photo)	500.00
67 ★	5c Black (9x1). Horiz. Pair, Margins 3 sides, in at R, tiny closed tear, positions 34-35, Fine-V.F. appearing (Photo)	500.00
68 ★	5c Black (9x1). Vertical Pair, Margins all around though close at T., positions 2, 7, one is Big Double Transfer, repaired, V.F. appearing (Photo)	500.00
69	5c Black, Pelure Paper (9x1). Margins all around, position 19, pretty Red Town cancel, Extremely Fine (Photo)	85.00
70	5c Black (9x1). Margins all around, position 27, pretty Red Town cancel, Very Fine (Photo)	85.00
71	5c Black (9x1). Margins all around, position 34, small thin, V.F. appearing (Photo)	75.00
72	5c Black (9x1). Position 13, Fine (Photo)	75.00
73	5c Black (9x1). Margins all around though close at T.R., position 28, Double Transfer, Fine (Photo)	75.00
74	5c Black (9x1). Margins 3 sides, just in at B., position 40, Fine ... (Photo)	75.00
75	5c Black (9x1). Margins all around, position 3, light Red Town cancel, small closed tear, V.F. appearing (Photo)	85.00
76	5c Black (9x1). Horiz. Pair, positions 39, 40, one stamp Margins all around, other just in at B., Fine-V.F. (Photo)	200.00
77 ☒	5c Black (9x1). Left Sheet margin copy, margins 3 sides, just in at B., Red New York pmk, position 11, Fine (Photo)	100.00
78 ☒	5c Black (9x1). Margins all around, except just in at B., tied blue pen, position 23 with D.T., Red New York pmk, Fine (Photo)	100.00
79 ☒	5c Black (9x1). Uncancelled copy on cover, Red New York pmk, Red 2 Paid, Fine (Photo)	100.00+
80 ☒	5c Black (9x1). Tied blue pen, Red New York pmk, Very Good (Photo)	100.00
81 ☒	5c Black (9x1). Margins all around, Ms. cancel, stamp lightly creased, red Paid and New York pmk. on cover, attractive appearance (Photo)	100.00
82 ☒	5c Black (9x1). Tied on cover, Very Good (Photo)	100.00
83 ☒	5c Black (9x1). Horiz. Pair, Margins all around, except just in at B. of one stamp, barely tied blue pen, Red New York pmk, Fine-V.F. (Photo)	300.00
84 P	5c Black, Bluish Bond Paper, Proof (9x1P). Very Fine (Photo)	30.00
85 P	5c Black, White Bond Paper, Proof (9x1P). Very Fine (Photo)	30.00
86 P	5c Deep Blue, Trial Color Proof (9x1TC). Very Fine (Photo)	30.00

87 P	5c Brown, Trial Color Proof (9x1TC). Very Fine	27.50
88	Robt. H. Morris, P. M. Autograph, Very Fine	E. I
89 ★	Providence, R. I. 5c Black (10x1). Margins all around, V. F. (Photo)	50.00
90 ★	Providence, R. I. 5c-10c Black, Complete Sheet of 12 (10x1-2) (Photo)	900.00
91 ★	Providence, R. I. 5c-10c Black, Cpl. Reprint Sheet of 12 (10x1-2). V. F.	150.00
92	St. Louis, Mo., 5c Bear, Greenish Paper (11x1). Margins all around except irregular at L. L. and touches at corner, tied red St. Louis and ms. on piece, Fine	(Photo) 400.00
93	St. Louis, Mo., 10c Bear, Greenish Paper (11x2). Margins all around except tiny nick at T., red pmk., attractive appearance	(Photo) 450.00
94 ☒	St. Louis, Mo., 10c Bear, Greenish Paper (11x2). Vertical Corner sheet margin pair, margins all around, tied ms and red cancel, red St. Louis pmk and red paid 20, small closed tear in sheet margin not entering design of stamp, striking cover	(Photo) 1500.00
95	St. Louis, Mo., 10c Bear, Gray Lilac Paper (11x5). Margins all around, red cancel, faint tiny corner crease, otherwise V. F.	(Photo) 450.00

1847 ISSUE

96	5c Red Brown (1). Margins all around, red grid cancel, Very Fine (Photo)	35.00
97	5c Red Brown (1). Margins all around, red grid cancel, very fine (Photo)	35.00
98	5c Red Brown (1). Margins all around, red grid cancel, Very Fine (Photo)	35.00
99	5c Red Brown (1). Margins all around, red grid cancel, Very Fine (Photo)	35.00
100	5c Red Brown (1). Very large margins all around red grid cancel, Extremely Fine	(Photo) 35.00
101	5c Red Brown (1). Margins all around, Double Strike of Blue Steam 5 in Circle , Very Fine	(Photo) E. VII
102	5c Dark Brown (1). Margins all around though close at T., Blue 5 in Circle cancel., Fine	(Photo) 85.00
103	5c Brown (1). Margins all around, blue grid cancel, small thin, V. F. appearing	45.00
104 ☒	5c Brown (1). Margins all around, tied blue Syracuse, N. Y. grid, V. F.	50.00
105 ☒	5c Red Brown (1). Tied with most unusual manuscript large X , red Lansingburgh, N. Y. pmk. on cover, Very Fine	(Photo) E. VII
106 ☒	5c Orange Brown (1b). Tied ms. cancel, Blue Auburn, N. Y. pmk., Fine	50.00

107	☒	10c Black (2). Margins all around except just touched partly at B. tied New York grid, to Canada, Fine	125.00
108	☒	10c Black (2). Tied red grid, red New York pmk on cover, Fine	125.00
109	★	5c Red Brown, Reproduction (3). Margins all around, Very Fine (Photo)	60.00
110	★	10c Black, Reproduction (4). Margins all around, Very Fine (Photo)	80.00

1851 ISSUE

111		1c Blue, Ty. 1b (6a). Blue Grid cancel, Fine (Photo)	250.00
112		1c Blue, Ty. II (7). Margins all around, Red Mobile "Paint" cancel, V. F. (Photo)	E. II
113		1c Blue, Ty. II (7). Margins all around, 49RIE, Very Fine	12.00
114		1c Blue, Ty. II (7). Large Margins all around, faint tiny corner crease, V. F. appearing	12.00
115		1c Blue, Ty. II (7). Margins all around, 23RIE, small thin, V. F. appearing	12.00
116		1c Blue, Ty. II, Reconstructed Crack (7). Positions 2, 12, 13, 23L2, all have minor defects, Fine-V. F. appearing	300.00
117	☒	1c Blue, Ty. II (7). Bottom Sheet margin copy tied Syracuse, N. Y., Fine	17.50
118	☒	1c Blue Ty. II (7). Tied Chester, Ct. and ms. on small embossed Valentine cover contains poem, V. F.	17.50
119	☒	1c Blue Ty. II (7). Tied Pittsburgh, Pa. on interesting circular on Coin and Banknote Discount Broker, Fine	17.50
120	☒	1c Blue, Cracked Plate (7). Tied Richmond, Va., position 13L2, Fine	75.00+
121	☒	1c Blue, Ty. II, IV (7, 9). Two covers, tied Square grid and Savannah, Ga. with Stars, each margins 3 sides cut in at T.	32.50
122		1c Blue, Ty. IIIa (8A). Margins all around, light paper stain, V. F. appearing (Photo)	75.00
123		1c Blue, Ty. IV (9). Margins all around, Very Fine (Photo)	10.00
124		1c Blue, Ty. IV (9). Margins all around, Very Fine (Photo)	10.00
125		1c Blue, Ty. IV. (9). Corner Sheet margin copy, margins all around, Very Fine (Photo)	10.00
126		1c Blue, Ty. IV (9). Margins all around, Very Fine	10.00
127		1c Blue, Ty. IV (9). Large margins all around, light red cancel, tiny thin, V. F. appearing	12.50
128		1c Blue, Ty. IV (9). Two copies, Fine-Very Fine	20.00
129		1c Blue, Ty. IV (9). Three copies including Bot. Sheet margin copy, Fine-V. F.	30.00

130	1c Blue, Ty. IV (9). Five copies including 2 Sheet margin copies, Very Good-Fine	50.00
131	☒ 1c Blue, Ty. IV (9). Tied New Haven, Conn. pmk. Very Fine	15.00
132	☒ 1c Blue, Ty. IV (9). Tied Hartford, Ct. pmk. on small cover, V. F.	15.00
133	☒ 1c Blue, Ty. IV (9). Tied blue Richmond, Va. pmk. V. F.	15.00
134	☒ 1c Blue, Ty. IV (9). Tied Hartford, Ct. Sep. 8, 1857 pmk. V. F.	25.00
135	☒ 1c Blue, Ty. IV (9). Margins all around, tied Fitchburgh, Mass. V. F.	15.00
136	☒ 1c Blue, Ty. IV (9). Tied neat Paid cancel, Fine	15.00
137	☒ 1c Blue, Ty. IV (9). Three overlapping copies tied Perry, N. Y. Fine	30.00
138	☒ 1c Blue, Ty. IV, Horiz. Pair, 3c Dull Red, Single (9, 11). Tied red New Orleans and French receiving markings making 5c Rate to France, Fine	27.50
139	3c Copper Brown (10). Margins all around, Blue Phila. cancel, Extremely Fine	E. I
140	3c Orange Brown (10). Margins all around, Very Fine	E. I
141	3c Orange Brown (10). Margins all around, Way 5 cancel Very Fine	E. II
142	☒ 3c Orange Brown (10). Right sheet margin copy not tied grid, red Springfield, Ms. July 5 (1851) pmk., First Week of Use, V. F., Scarce	E. III
143	☒ 3c Orange Brown (10). Tied, Freehold, N. J. Aug. 30 (1851) pmk. V. F.	E. I
144	☒ 3c Orange Brown (10). Tied grid Blue Buffalo pmk, Blue Steamboat in fancy Scroll cancel, Fine	E. II
145	3c Imperforate (11). Three copies, 2 diff. way cancels and sheet margin copy, V. F.	E. I
146	☒ 3c Claret (11a). Tied Auburn N. Y. within frame on illustr. cover Bach's American Compound, attractive	(Photo) E. II
147	☒ 3c Claret (11). Tied New Orleans, on cover with attractive illustr. blue imprint Toby's Express, Fine, Scarce	(Photo) E. VII
148	☒ 3c Brownish Carmine (11). Blue grid not tying on scarce Illustrated Buchanan and Breckinridge Campaign cover, V. G.	(Photo) E. III
149	☒ 3c Claret (11). Tied striking Red Balloon Stevens Plains, Maine pmk., additional strike alongside stamp, V. F.	(Photo) E. IV
150	☒ 3c Dull Red (11). Tied clear fancy Star cancel, Fine	(Photo) E. II
151	☒ 3c Brownish Carmine (11). Left sheet margin imprint no. copy tied Huntsville, Al. and Missent, Rochester, N. Y. pmk., V. F.	(Photo) E. III
152	☒ 3c Dull Red (11). Tied frameless curved Aberdeen, O. cancel, Fine	E. I
153	☒ 3c Brownish Carmine (11). Large margins all around, tied Red Creek, N. Y., V. F.	E. I

154	✉	3c Brownish Carmine (11). Margins all around, tied pretty Paid 3 in circle cancel, North Berwick, Me. pmk., V.F.	E. III
155	✉	3c Dull Red (11). Tied clear red Hudson River R. R. pmk., Fine, Scarce	E. IV
156	✉	3c Dull Red (11). Tied grid, red Hudson River Mail, N. Y. pmk. on attractive cover illustr. Green Engine Builders Corner Card, Fine	E. III
157	✉	3c Dull Red (11). Double Transfer "Line through 3 cents and rosettes double" tied by Rail Road pmk., Fine	20.00+
158	✉	3c Brownish Carmine (11). Two covers tied, each stamp margins all around, one is centerline copy, V.F.	E. I
159	✉	3c Brownish Carmine (11). Two pretty covers tied, each stamp margins all around, V.F.	E. I
160	✉	3c Dull Red, 1c Blue Eagle Carrier (11,LO2). Each tied Blue Phila. pmk., Carrier has additional red star cancel, Fine	20.00
161		10c Green, Ty. I (13). Horiz. Strip of 4, margins all around except just in at bot. of 2 stamps, partly severed between first and second stamp, remaining strip of 3 is Fine-V.F.	(Photo) 500.00+
162		10c Green, Ty. II (14). Margins all around, Very Fine	(Photo) 20.00
163		10c Green, Ty. II (14). Margins all around, Very Fine	(Photo) 20.00
164		10c Green, Ty. II (14). Margins all around, Very Fine	20.00
165		10c Green, Ty. II (14). Margins all around, Very Fine	20.00
166		10c Green, Ty. II (14). Margins all around, Blue Dotted grid cancel, V.F.	20.00
167		10c Green, Ty. III (15). Large margins all around, Bold Mobile "Red Paint" cancel, tiny nick in margin, striking appearance	(Photo) 22.50
168		10c Green, Ty. III (15). Margins all around, pretty Red Grid cancel, Extremely Fine	(Photo) 22.50
169		10c Green, Ty. III (15). Margins all around, Very Fine	(Photo) 20.00
170		10c Green, Ty. III (15). Margins all around, Very Fine	20.00
171		10c Green, Ty. III (15). Margins all around, Very Fine	20.00
172		10c Green, Ty. III (15). Large margins all around, light blue cancel, small closed tear, V.F. appearing	20.00
173		12c Black (17). Margins all around, Very Fine	(Photo) 22.50
174	✉	12c Black (17). Vert. Pair tied on cover to Liverpool, various transit markings, Fine	(Photo) 75.00

1857 ISSUE

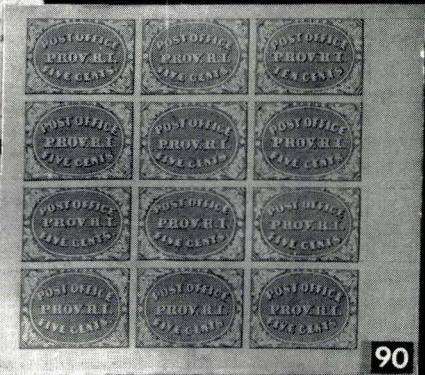
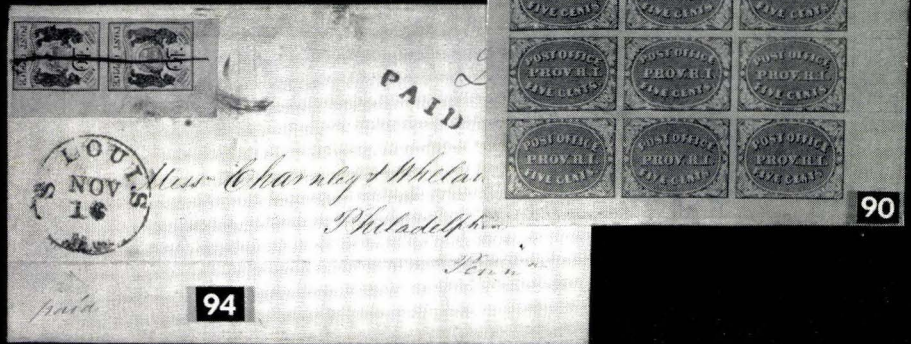
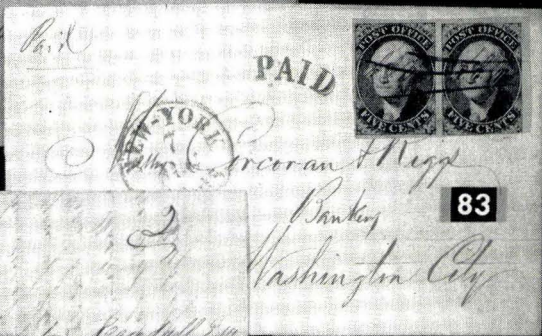
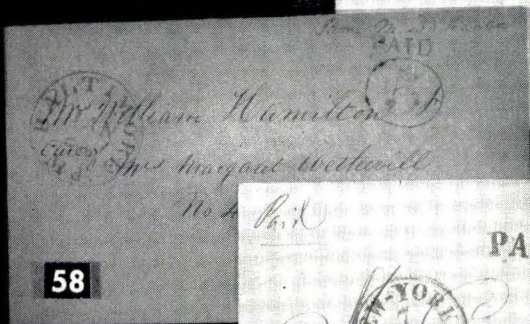
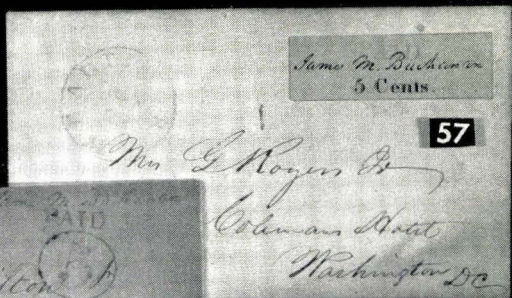
175		1c Blue, Ty. I (18). Fine	50.00
-----	--	--	-------

176	1c Blue, Ty. Ia (19). Boston Paid cancel, creased, Fine appearing	200.00
177 ★	1c Blue, Ty. II (20). Tiny hinge thin, V. F. appearing	30.00
178	1c Dark Blue, Ty. II, III, IIIa, Vert. Strip of 3 (20, 21, 22). Ty. II has faint cancel, others appear uncanceled, Ty. IIIa stamp has faint corner crease, Rare Strip	(Photo) 142.50+
179	1c Blue Ty. II, 12c Black (20, 36). Latter has red grid, Fine	28.50
180 ☒	1c Blue, Ty. II, 3c Red Ty. I two on 3c Red Entire (20, 25, U10). Tied Cape Vincent, N. Y. on cover to Canada , red "U. States Paid", one 3c stamp clipped perfs., V. G.	22.50
181	1c Blue, Ty. III (21). Very Fine	(Photo) 67.50
182	1c Blue, Ty. IV (23). New York Ocean Mail cancel, light crease, V. F. appearing	27.50+
183 ☐	3c Red, Ty. I (25). Block, town cancel one stamp has corner repair, Fine appearing	100.00
184 ☒	3c Red (26). Tied clear Oval United States 6p pmk., additional 10 in circle and Chicago pmk., stamp slightly faded, attractive	(Photo) E. II
185 ☒	3c Red (26). Very Fine strike of AXE cancel, Collinsville, Ct. pmk. on cover which has closed tear, attractive	(Photo) E. V
186 ☒	3c Red (26). Tied Slanting Paid cancel, oval New London, N. H. pmk. on cover, Fine	E. I
187 ☒	3c Red (26). Tied Lisbon, Me. on most attractive and unusual illustrated Railroad cover, V. F.	(Photo) E. VIII
188 ☒	3c Red (26). Not tied ms. cancel, blue Corfu, N. Y. pmk. on attractive Illustrated Lincoln campaign cover showing Beardless Lincoln, Fine	(Photo) E. IV
189 ☒	3c Red (26). Tied Boston Paid cancel on Caricature Patriotic (Dog Chasing Rats from U. S. mint), Very Fine	(Photo) E. V
190 ☐	3c Red (26). Block of 6 tied Pretty Blue Grid on large piece of cover, 3 stamps S. E., Attractive	20.00
191	5c Brick Red (27). Very Fine	(Photo) 65.00
192	5c Brick Red (27). Fine	65.00
193	5c Red Brown (28). Attractive Red Grid cancel, Fine	50.00
194	5c Red Brown (28). Fine	45.00
195	5c Brown, Ty. II (30A). Red cancel, Very Fine	20.00
196	10c Green, Ty. I (31). New York Ocean Mail cancel, centered to R.	60.00
197 ☒	10c Green Ty. I (31). Fine stamp tied on legal cover addressed to Weaver-ville, Calif. other stamps apparently removed from cover	75.00

198	10c Green, Ty. V (35). Two copies with pretty Red New York Paid cancels, Very Fine	13.00
199	12c Black (36). Variety "Double Frame Line at Left", light corner crease, Scarce	—
200	✉ 12c Black (36). Horiz. Pair tied Blue Chicago, Ill. on cover to Ireland, Fine	25.00
201	✉ 12c Black (36). Horiz. Pair tied, Phila. pmk. on cover to England, various transit marks, Fine	25.00
202	24c Gray Lilac (37). Pretty Red Grid cancel, Extremely Fine (Photo)	27.50
203	24c Lilac (37). Red grid cancel, Very Fine (Photo)	27.50
204	24c Lilac (37). Red Grid cancel, Fine	27.50
205	✉ 24c Lilac (37). Tied on small cover to England, Five red postmarks, Fine (Photo)	85.00
206	★ 30c Orange (38). Very Fine (Photo)	37.50
207	30c Orange (38). Red Grid cancel, Very Fine (Photo)	35.00
208	30c Orange (38). Fine	32.50
209	30c Orange (38). Blue grid cancel, centered to L, Fine	35.00

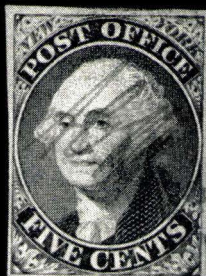
WESTERN AND TERRITORIALS

210	✉ Anderson, Tex., three Texas stampless covers, Paid 3, 10, X, one in red, Fine-V. F.	E. III
211	✉ Benicia, Wells Fargo & Co. Express in black oval, paid in octagon, Fine	E. II
212	✉ Canon City Col. Paid 3 in ms., letter dated 1862, Scarce territorial, Fine	E. II
213	✉ Fort Madison, I. T. (Iowa Territory) in circle, "25" in ms. Fine Territorial	E. II
214	✉ Grass Valley, Cal. black circle, Paid 10 in circle, V. F.	E. I
215	✉ Marysville, Wells Fargo & Co. Express in blue oval, Very Fine	E. II
216	✉ Red Dog, Cal. in circle, Paid 10c, clear strikes, cover slightly soiled	E. II
217	✉ 1c Blue, Ty. IV, 3c Red, Strip of 3 (9, 11). Tied San Francisco, Cal. Fine	E. II
218	✉ 3c Brownish Carmine (11). Tied Leavenworth City, K. T., pmk. Fine	E. II
219	✉ 3c Red (26). Tied clear Falls City, Neb. on neat cover, small piece of back missing, V. F. Territorial	E. II
220	✉ 3c Rose (65). Tied unusual type Clifton, Nev. Ter. 1863 pmk. Fine (Photo)	E. III
221	✉ 3c Rose (65). Ms. cancel Fair Play, Col. Ty. Mar. 27, 1865, Fine, Scarce territorial	E. II





59



60



61



62



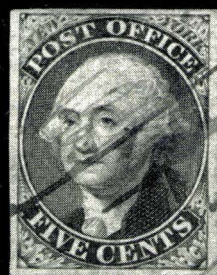
63



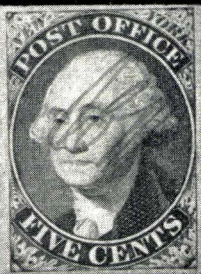
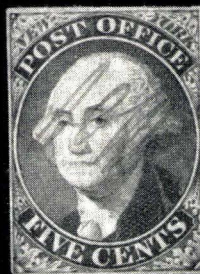
69



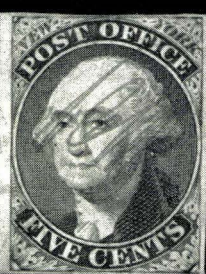
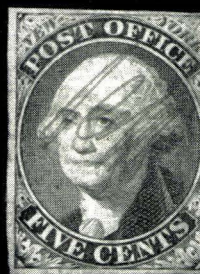
70



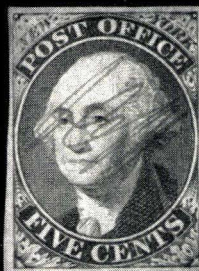
71



65



66



67



72



73



74



76



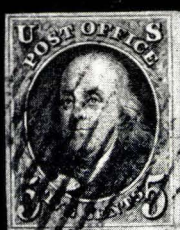
89



93



95



96



97



98



99



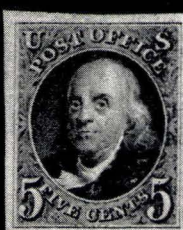
100



101



102



109



110



111



112



122



123



124



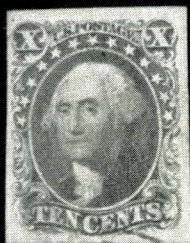
161



125



162



163



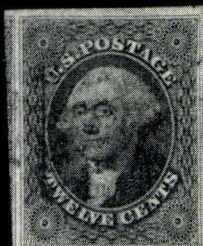
167



168



169



173



181



191



202



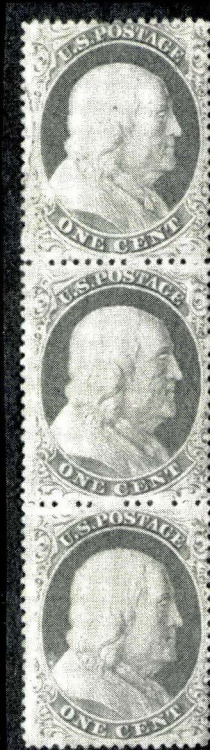
203



206

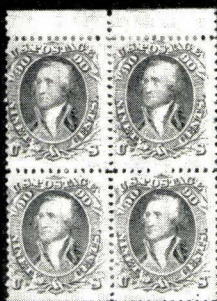


207



178





277



385



278



281



284



285



286



287



288



289



290



291



292



293



294



295



296



297



302



370



371



372



374



378



379



392



406



446



463



469



470



474



92



483



523



518



533

222	✉	3c Rose (65). Ms. cancel Fair Play, Col. Ty. , Mar. 13, 1862, Fine, Scarce territorial	E. II
223	✉	10c Green (68). Tied Red Dog, Cal. pmk. Good	E. I
224	✉	10c Green (68). Tied Blue Carson City U. T. pmk. Very Good	E. II
225	✉	30c Orange (71). Tied on cover to Switzerland, Hornitos Cal. pmk., various transit markings, Fine	E. II
226	✉	7c Vermilion, Grill (138). Tied, Santa Clara, Cal. pmk. on cover to Germany, Fine	45.00
227	✉	3c Green (158). Tied, purple Aita, Utah pmk. Fine territorial	E. II
228	✉	3c Green (158). Cut copy tied Humboldt, Kans. , entire reverse shows Railroad Map of Kans., Nebr., Indian Ter., Iowa, Mo. etc. Interesting	E. I
229	✉	3c Green, str. edge copy tied with unusual rectangle of many small diamonds, Sioux Falls, Dakota pmk. Fine territorial	E. II
230	✉	3c Greens, Two covers tied Grand Rapids, Dakota and Harrold, D. T. , V. F. territorials	E. I
231	✉	3c Greens, Two covers, Deadwood, Dak. and Mitchell, Dak. pmks, Fine-V. F. territorials	E. I
232	✉	1c Ultramarine (212). Vert. Pair tied Forbestown, Butte Co. Cal. and Kicking Mule cancels, 1 stamp slightly clipped from opening letter, attractive cover	E. IV
233	✉	3c Red Entire (U9). Pacific Express Frank with Horseman, Sacramento marking, Fine	E. II
234	✉	10c Green Entire (U16). Ms. Benicia, Cal. pmk, tied Boston paid on cover to Mass., V. F.	E. I
234A	✉	10c Green Entire (U16). Tied blue North San Juan, Cal. pmk. Ms. "Via Overland", Fine	E. II
235	✉	3c Green Entire (U164). Wells Fargo & Co. Frank , tied blue Paso Robles Ht. Sp. (Hot Springs) Co. cancel, additional 3c green on cover, Fine	E. II

1861 ISSUE

236	✉	24c Gray Lilac, August (60). Tied Cambridge, Mass. on cover to Ireland, various transit marks, stamps S. E. at L, Fine	(Photo) 125.00
237	✉	1c Blue (63). Seven covers including Carrier, Drop Letter, two with 3c stamps making 10c rate to Canada, V. G.-V. F.	E. II
238	✉	1c Blue, 10 Green, Pair (63, 68). Tied Green Clifton, Ill. grid on tiny cover to Switzerland, Fine	E. III
239		3c Rose (65). Pair and single tied on piece with unusual large X cancels, V. F.	E. II

240	✉	3c Rose (65). Bold Lockport, N. Y. "LV" cancel not tying, V. F. cancel	E. I
241	✉	3c Rose (65). Ms. cancel, Tyre, N. Y. on attractive Illustrated Lincoln Campaign cover showing Lincoln splitting logs, Fine	E. III
242	✉	3c Rose (65). Sixteen covers includes Fancy, Hot Springs, Ark., to Canada, ms. Fishermans Bay, Railroad, Missent, V. G.-V. F.	E. II
243	✉	3c Rose, 12c Black (65, 69). Tied Prattville, Ala. grid on cover to Germany, various transit markings, V. F.	E. I
244	✉	3c Rose, 12c Black, Two (65, 69). All cancelled by magenta pen strokes on small cover to Belgium, various transit marks, one 12c stamp overlaps edge of cover	E. II
245	✉	3c Rose, 24c Brown Lilac, 30c Orange (65, 70-71). Tied on cover to Hong Kong and forwarded to Shanghai, Fine	38.10
246		5c Buff (67). Tiny corner crease, V. F. appearing	40.00
247	✉	5c Buff (67). Tied San Francisco Cog Wheel cancel on reduced cover with 2 additional 3c stamps, New York pmk., Fine	75.00
248		10c Green (68). Green cancel, Fine	12.50
249		10c Green (68). Horiz. Strip of 3 and Vert. Pair, Fine-V. F.	11.00
250	★	10c Green (68). Three copies, Fine	24.00
251		10c Green (68). Four copies, Cogwheel, Target, geometric cancels, Fine	E. I
252		10c Green (68). Six copies, shades, Very Fine	12.00
253		10c Green (68). Fifteen copies including shades, Fine-V. F.	30.00
254	✉	10c Green (68). Five covers to Canada, V. G.-V. F.	E. I
255		12c Black (69). Two copies, 1 with Blue cancel, Very Fine 6	11.00
256		12c Black (69). Two copies with Red cancels, Very Fine	12.00
257		12c Black (69). Three copies, Very Fine	16.50
258		12c Black (69). Four copies, Paid, Red, Blue, geometric cancels, each has S. E., Fine-V. F.	22.50
259		12c Black (69). Six copies including Boxed Paid, Red cancel, V. G.-V. F.	33.00
260		24c Red Lilac (70). Alexandria, Va. Floral cancel, Fine	E. II
261		24c Red Lilac (70). Two copies with San Francisco Cog wheel cancels, V. G.-Fine	E. II
262		24c Red Lilac (70). Two copies, Blue Town & Blue Grid of Diamonds cancels, 1 has tiny thin, other V. F.	26.00
263		24c Red Lilac (70). Four copies, one S. E., V. G.-Fine	48.00
264	✉	2c Black, Two, 24c Red Lilac (70, 73). Tied on cover to Germany, various transit marks, small corner of envelope missing, Fine, attractive (Photo)	36.00

265	✉	24c Brown Lilac (70a). Tied by grid on cover to England, Fine	30.00
266		24c Steel Blue (70b). Small closed tear, Fine appearing	35.00
267		30c Orange (71). Unusual Ultramarine Grid cancel, tiny thin, V.F. appearing	E. I
268		30c Orange (71). Horiz. Pair, Very Fine	27.50
269		30c Orange (71). Vert. Pair tied Toledo, O. on small piece, Fine	27.50
270		30c Orange (71). Two copies, Fine-Very Fine	16.00
271		30c Orange (71). Two copies, Red & Blue cancels, V.G.-Fine	19.00
272		30c Orange (71). Three copies, Fine-Very Fine	24.00
273		30c Orange (71). Three copies, Leaf, Geometric, Bar cancels, V.G.-Fine	24.00
274		30c Orange (71). Five copies including Red, 1865 cancels, one S.E., V.G.-V.F.	44.00
275		30c Orange (71). Five copies including interesting double perf copy, V.G.-V.F.	40.00
276	田	30c Orange (71). Two Blocks tied on face and back of cover to Baden, New Orleans pmk., various transit marks, each block has light crease from letter folds, Attractive and Rare	400.00+
277	★田	90c Dark Blue (72). Top Sheet margin Block , centered to left, o.g., Fine, Rare Block	(Photo) 750.00
278		90c Blue (72). Very Fine	(Photo) 20.00
279		90c Blue (72). Blue Town cancel, unnoticeable defects, nice appearing	22.50
280		90c Blue (72). Fancy Red Geometric cancel, S.E. at L and tiny nick, nice appearing	35.00

2c BLACK JACK

281	★	2c Black (73). Very Fine, o.g.	(Photo) 7.50
282	★	2c Black (73). Two Shades, Fine	15.00
283	★	2c Black (73). Four copies, 2 S.E., Very Good	30.00
284		2c Black (73). Extremely Fine	(Photo) E. I
285		2c Black (73). Extremely Fine	(Photo) E. I
286		2c Black (73). Blue town cancel, Extremely Fine	(Photo) E. I
287		2c Black (73). Barely cancelled, Extremely Fine	(Photo) E. I
288		2c Black (73). Phila. Post Office cancel, Extremely Fine	(Photo) E. II
289		2c Black (73). Extremely Fine	(Photo) E. I
290		2c Black (73). Attractive blue grid, Extremely Fine	(Photo) E. I

291	2c Black (73). Extremely Fine	(Photo)	E. I
292	2c Black (73). Extremely Fine	(Photo)	E. I
293	2c Black (73). Light Red cancel, Extremely Fine	(Photo)	E. I
294	2c Black (73). Bold fancy design, Very Fine	(Photo)	E. II
295	2c Black (73). Pretty Red Target, Bold strike, Very Fine	(Photo)	E. III
296	2c Black (73). Imperforate at R. showing portion of next stamp, attractive Erie, Pa. town cancel, Very Fine	(Photo)	E. II
297	2c Black (73). Hingham, Mass. Bat cancel, Fine	(Photo)	E. II
298	2c Black (73). Large Red cancel, Very Fine		E. I
299	2c Black (73). Very Fine		E. I
299A	2c Black (73). Scarce clear New York City Soldiers Head cancel, light crease, Fine appearance		E. V
300	2c Black (73). Blue Target and Red Paid cancel, centered to B.		E. I
301	2c Black (73). Large Red F cancel, Fine		E. V
302	2c Black (73). Horiz. Pair, Extremely Fine	(Photo)	E. II
303	2c Black (73). Horiz. Pair, Very Fine		E. I
304	2c Black (73). Horiz. Pair tied with Rosette cancel on piece, Fine		E. I
305	2c Black (73). Three pairs including vertical with blue target, Fine		E. II
306	2c Black (73). Two diff. Leaf cancels, Very Fine		E. II
307	2c Black (73). Two diff. fancy designs, Extremely Fine		E. II
308	2c Black (73). Two Target cancels, Extremely Fine		E. II
309	2c Black (73). Two shades, Extremely Fine		E. II
310	2c Black (73). Two copies each with Bold Strike of diff fancy Red Star cancels		E. II
311	2c Black (73). Two copies with Red Town cancels, Fine		E. I
312	2c Black (73). Three diff. Town cancels, Extremely Fine		E. II
313	2c Black (73). Three copies, Very Fine		E. I
314	2c Black (73). Three copies, Leaf, Star, Cog wheel cancels, V. G.-Fine		E. II
315	2c Black (73). Three copies each tied on piece with town cancels, V. F.		9.00
316	2c Black (73). Four copies, Very Fine		E. II
317	2c Black (73). Five diff. Red cancels, V. G.-Fine		E. I
318	2c Black (73). Four copies, Cogwheel, Star, Geometric, Dotted Grid cancels, V. G.-Fine		E. II

319	2c Black (73). Five copies, Very Fine	E. II
320	2c Black (73). Five diff. Blue cancels, Very Fine	E. II
321	2c Black (73). Five copies, Very Fine	E. II
322	2c Black (73). Five diff. Blue cancels, Very Fine	E. II
323	2c Black (73). Five copies, Very Fine	E. II
324	2c Black (73). Five copies, Very Fine	E. II
325	2c Black (73). Five copies, Very Fine	E. II
326	2c Black (73). Five copies, Very Fine	E. II
327	2c Black (73). Five copies, Very Fine	E. II
328	2c Black (73). Five copies, Very Fine	E. II
329	2c Black (73). Five copies, Very Fine.....	E. II
330	2c Black (73). Five copies, Very Fine	E. II
331	2c Black (73). Five copies, Very Fine	E. II
332	2c Black (73). Five copies, Very Fine	E. II
333	2c Black (73). Five copies, Very Fine	E. II
334	2c Black (73). Five copies, Very Fine	E. II
335	2c Black (73). Five diff. Star cancels, V. G.-Fine	E. I
336	2c Black (73). Five copies, Fine-V. F.	E. I
337	2c Black (73). Two Leafs , Cog Wheel , and Boston Wheel cancels, Fine	E. II
338	2c Black (73). Five diff. Red cancels, Fine-V. F.	E. II
339	2c Black (73). Five diff. Double Transfers Fine-V. F.	E. II
340	2c Black (73). Six diff. Blue cancels, Fine-V. F.	E. II
341	2c Black (73). Six diff. Paid cancels includes 2 in blue, V. G.-Fine	E. I
342	2c Black (73). Six cancels, Patent, Post Office, Revenue, Straight Line Dates or town, V. G.-V. F.	E. II
343	2c Black (73). Two diff. Shields , Leaf Cross , two diff. Magenta fancy, V. G.-Fine	E. II
344	2c Black (73). Eight copies with Star cancels including Blue and Magenta, V. G.	E. II
345	2c Black (73). Eleven diff. fancy designs including pair, V. G.-Fine	E. II
346	2c Black (73). Fifteen copies including cancels, few S. E., Very Good- Very Fine	45.00

347	✉	2c Black (73). Two copies one S.E. tied N. Y. City pmk. on Patriotic cover, Flag in colors, Fine, Scarce (Photo)	E. III
348	✉	2c Black (73). Tied Hartford, Conn. Star cancel on attractive illustr. advert. cover showing Coach & Horses, Fine	E. II
349	✉	2c Black (73). Cambridge, Mass. Skull cancel not tying on circular, Fine	E. V
350	✉	2c Black (73, 93). Five covers, includes blue and black Carrier cancels, 2 diff. illustr. advert. covers, Good-Fine	E. II
351		5c Red Brown (75). Red cancel, one short perf. V.F. appearing	22.50
352		5c Red Brown (75). Two copies, Black & Red Grid cancels, Fine-V.F.	40.00
353		5c Red Brown (75). Two copies, Blue Town & Red Grid cancels, first has tiny tear, last centered to B.	42.50
354		5c Brown (76). Portion of blue Wells Fargo Co. cancel, Fine	E. II
355	✉	5c Brown (76). Tied New York to Halifax N. S. Fine	E. I
356		15c Black (77). Very Fine	9.00
357		15c Black (77). French Anchor within Dotted grid cancel, S.E. at L and light crease, V.F. appearing	E. I
358		15c Black (77). Two Horiz. Pairs, 1 shows Imprint, other S.E. with centerline, V.G.-Fine	45.00
359		15c Black (77). Two copies, Red Grid, Blue Target cancel, Fine	20.00
360		15c Black (77). Three copies, Fine-Very Fine	27.00
361		15c Black (77). Five copies, V.G.-V.F.	45.00
362		15c Black (77). Six copies, Fine	54.00
363		15c Black (77). Six copies including Blue Target, Red cancels, one S.E., V.G.-V.F.	54.00
364	✉	15c Black (77). Tied Red New York Paid All cancel, Galena, Ill. pmk., stamp centered, B. & L.	15.00
365		24c Lilac (78). Two copies, Ultramarine and Blue cancels, V.G.-Fine	E. II
366		24c Lilac (78). Ten copies including Target, Blue, Foreign cancels, Strip of 3, V.G.-V.F.	69.50

1867 GRILL ISSUES


367		3c Rose, Grilled all Over (78). Closed tear, usual short perfs.	100.00
368		3c Rose, C. & D. Grills (83, 85). Very Good-Fine	43.50
369	✉	12c Black, Z. Grill, 30c Orange (71, 85E). Tied foreign Recieving mark, Placerville, Cal. pmk., 12c has S.E. at L, Fine (Photo)	80.00

370	3c Rose, D Grill (85). Extremely Fine (Photo) ..	18.50
371	2c Black Z Grill (85B). Extremely Fine (Photo)	22.50
372	2c Black, Grill (87). Extremely Fine (Photo)	E. I
373	2c Black Grill (87). Red Masonic cancel, str. edge at left, V. G.	E. II
374	2c Black, Grill (87). Horiz Pair each with large B cancel, well centered, tiny thin on one stamp (Photo)	E. II
375	2c Black (87, 93). Two diff. Leaf cancels, Very Fine	E. II
376	2c Black (87). Two copies, one blue cancel, Very Fine	E. II
377	12c Black, Grill (90). Eight copies including Pair, Good-Very Fine	72.00
378 ★	2c Black (93). Horiz. Pair, Extremely Fine, o. g. (Photo)	22.00
379	2c Black (93). Huge margins, imperforate sheet margin at left, Extremely Fine (Photo)	E. II
380	2c Black Grill (93). Masonic Square & Compass cancel, Fine	E. II
381	2c Black, Grill (93). Two copies, Very Fine	7.00
382	5c Brown, Grill (95). Horiz. Strip of 5, lightly cancelled, few short perfs and re-enforced, Rare Strip	205.00+
383 ☒	5c Brown, Grill, Strip of 3, 3c Green (95, 147). Tied on legal size cover, Flemington, N. J. pmk., Fine	135.00+
384	10c Green Grill (96). Vert. Pair, large margins all around, S. E. at left, V. F.	15.00
385	12c Black, Grill (97). Horiz. Pair, Fine	20.00
286	12c Black, Grill (97). Three copies, 1 has tiny thin, others Fine-V. F.	25.50
387	12c, 15c Black (97-98). Very Fine	16.00
388	15c Black, Grill (98). Very Fine	7.50
389 ☐	24c Gray Lilac, Grill (99). Block , attractive Red Grid cancel, centered to L, one stamp tiny closed tear, Fine appearing (Photo)	600.00
390	90c Blue, Grill (101). Few perfs. lightly creased, Fine appearing	90.00
391	90c Blue, Grill (101). Light cancel, centered to R. and faint crease	90.00
392	90c Blue, Grill (101). Horiz. Pair, Fine (Photo)	225.00

1869 PICTORIAL ISSUE

393 ★	1c Buff, 2c Brown (112-113). Fine-Very Fine	26.50
394	1c Buff (112). Very Fine	10.00
395	1c Buff (112). Pretty Blue Rosette cancel, Very Fine	E. II

396	1c Buff (112). Blue and Red Foreign Receiving Cancels, Very Fine	E. II
397	1c Buff (112). Very Fine	10.00
398	1c Buff (112). Three copies, Very Good-Very Fine	30.00
399	☒ 1c Buff, 2c Brown (112-113). Tied Cadiz, Ky. Grid, each has S. E., Fine	E. I
400	☒ 1c Buff, 3c Ultramarine (112, 114). Tied on cover to France, New Orleans pmk, various transit markings, last has S. E., Fine	E. III
401	★ 2c Brown (113). Two shades, 1 S. E., other Fine	20.00
402	2c Brown (113). Four Shades, Very Fine	12.00
403	2c Brown (113). Six copies, Fine-Very Fine	18.00
404	2c Brown (113). Ten copies including shades, Very Good-Very Fine	30.00
405	☒ 2c Brown (113). Tied grid, Carrier (Phila.) in circle pmk. Fine	E. I
406	3c Ultramarine (114). Pretty poinsettia cancel, V. F.	Photo) E. II
407	☒ 3c Ultramarine, 10c Yellow on 9c Orange Yellow Entire (114, 116, U66) tied on New York Registered cover to Red Bluff, Calif., Ms. "Overland", Very Good	E. III
408	☒ 3c Ultramarine, 6c Ultramarine (114-115). Tied on legal size cover, Flemington, N. J. pmk, Fine	15.40
409	6c Ultramarine (115). Very Fine	8.50
410	6c Ultramarine (115). Interesting "Creased Before Printing" variety, V. F.	E. II
411	6c Ultramarine (115). Pretty Red cancel, Very Good	10.00
412	6c Ultramarine (115). Blue Cincinnati cancel, Fine	10.00
413	6c Ultramarine (115). Two shades, Fine-Very Fine	17.00
414	6c Ultramarine (115). Two copies with pretty Red cancel, Fine	20.00
415	6c Ultramarine (115). Two copies, Geometric and Magenta cancels, Fine	18.50
416	6c Ultramarine (115). Three copies with Red cancels, Fine-Very Fine	30.00
417	6c Ultramarine (115). Three copies, Fine-Very Fine	25.50
418	6c Ultramarine (115). Four copies, Fine-Very Fine	34.00
419	6c Ultramarine (115). Five copies, Very Good-Very Fine	42.50
420	6c Ultramarine (115). Six copies, 2 S. E., Very Good-Very Fine	51.00
421	10c Yellow (116). Attractive Geometric Cork cancel, Very Fine	E. II
422	10c Yellow (116). Very Fine	8.50
423	10c Yellow (116). Very Fine.....	8.50
424	10c Yellow (116). Very Fine	8.50

425	10c Yellow (116). Steamship cancel, Fine	10.00
426	10c Yellow (116). Clear Japan cancel, centered T. & L.	15.00
427	10c Yellow (116). Two copies, Very Fine	17.00
428	10c Yellow (116). Two copies, Steamship and Japan cancels, V.G.-Fine	25.00
429	10c Yellow (116). Three copies, Fine-Very Fine	25.50
430	10c Yellow (116). Five copies, Very Good-Very Fine	42.50
431	10c Yellow (116). Six copies, Very Good-Very Fine	51.00
432	10c Yellow (116). Eight copies, 2 S.E., Very Good-Fine	68.00
433	12c Green (117). Very Fine	8.50
434	12c Green (117). Very Fine	8.50
435	12c Green (117). Very Fine	8.50
436	12c Green (117). Very Fine	8.50
437	12c Green (117). Very Fine	8.50
438	12c Green (117). Target cancel, Very Fine	8.50
439	12c Green (117). Very Fine	8.50
440	12c Green (117). Split Grill, light cancel, Fine	10.00
441	12c Green (117). Two copies, Target and Crossroads cancels, Fine	17.00
442	12c Green (117). Three copies, Very Fine	25.50
443	12c Green (117). Three copies, Fine-Very Fine	25.50
444	12c Green (117). Five copies, includes Crossroads cancels, 2 S.E., Fine-V.F.	42.50
445	 12c Green (117). Not tied on legal size cover, Millstone, N. J. pmk, V. G.	27.50
446	15c Brown & Blue, Ty. I (118). Extremely Fine (Photo)	35.00
447	15c Brown & Blue, Ty. I (118). Red Rosette cancel, Fine	40.00
448	15c Brown & Blue, Ty. I (118). Fine	35.00
449	15c Brown & Blue, Ty. I (118). Fine	35.00
450	15c Brown & Blue, Ty. I (118). Fine	35.00
451	15c Brown & Blue, Ty. I (118). Fine	35.00
452	15c Brown & Blue, Ty. I (118). Fine	35.00
453	15c Brown & Blue, Ty. I (118). Bold Red Leaf cancel, centered to R.	E. III
454	15c Brown & Blue, Ty. I (118). Fine	35.00
455	15c Brown & Blue Type I (118). Fine	35.00

456	15c Brown & Blue, Ty. I (118). Two copies, Very Good-Fine	70.00
457	15c Brown & Blue, Ty. I (118). Two copies, Very Good-Fine	70.00
458	✉ 15c Brown & Blue, Ty. I (118). Tied on cover to France, centered to R. Fine	125.00
459	15c Brown & Blue (119). Very Fine	10.00
460	15c Brown & Blue (119). Extremely Fine	10.00
461	15c Brown & Blue (119). Very Fine	10.00
462	15c Brown & Blue (119). Very Fine	10.00
463	15c Brown & Blue (119). Unusual 5 Pointed Star cancel, small thin, V. F. appearing	(Photo) E. III
464	15c Brown & Blue (119). Vert. Pair, Very Good	30.00
465	15c Brown & Blue (119). Two copies, Fine-Very Fine	20.00
466	15c Brown & Blue (119). Two copies, Fine	20.00
467	15c Brown & Blue (119). Three copies, Fine-Very Fine	30.00
468	15c Brown & Blue (119). Five copies, Fine	50.00
469	24c Green & Violet (120). Very Fine	(Photo) 37.50
470	24c Green & Violet (120). Very Fine	(Photo) 37.50
471	24c Green & Violet (120). Fine	37.50
472	24c Green & Violet (120). Partial strike of Masonic Square & Compass cancel, Fine	E. III
473	★ 24c Green & Violet (120). Tiny thin, V. F. appearing	77.50
474	30c Blue & Carmine (121). Very Fine	(Photo) 25.00
475	30c Blue & Carmine (121). Fine	25.00
476	30c Blue & Carmine (121). Fine	25.00
477	30c Blue & Carmine (121). Two copies, Very Good-Fine	50.00
478	30c Blue & Carmine (121). Three copies, Target, Red, Grid cancels, 2 have light creases, V. G.-Fine	80.00
479	P 2c-90c Pictorials, Proofs Mounted on Cards (113P-122P). Very Fine	—
480	1c Buff, Re-Issue (123). Target cancel, Very Fine	17.50

BANK NOTE ISSUES

481	1c-2c Banknotes grills (134-135). First split grill, latter three copies one red cancel, Very Fine	16.50
482	6c Carmine, Grill (137). Very Fine	25.00

483	10c Brown Grill (139). Very fine (Photo)	45.00
484	☒ 2c-3c Banknotes, Five covers selected for cancels, includes Plymouth, Mass. "B", McDanills P.O., Arkansas, fancy Lancaster, Mass. Ovals, Fine-V. F.	E. I
485	6c-15c Banknotes (148-152). Very Fine	22.25
486	☒ 6c Carmine (148). Three legal size covers tied, 2 have 3 copies, Fine	11.00
487	☒ 6c Carmine, 12c Violet (148, 151). Tied on legal size cover, Flemington, N. J. pmk, Fine	26.25
488	☒ 7c Vermillion (149). Tied on cover to Germany, various transit markings, Fine	32.50
489	7c-30c Banknotes (149-150, 161, 163, 165). Very Fine	22.35
490	90c Carmine (155). Very Fine	15.00
491	7c, 10c, 15c Banknotes (160, 161, 163). Each diff. N. Y. Foreign Mail cancel, V. F.	15.35+
492	★☐ 5c Blue (179). Block, Fine, o. g.	100.00
493	☒ 15c Bright Orange (152). Horiz. Pair tied on legal size Illustrated Fire Insurance cover, V. G.	13.50
494	10c-90c Banknotes (187-191). Fine-Very Fine	27.00
495	☒ 10c Brown, four, 5c Blue (187-188). Tied on Illustrated legal size Insurance cover, Fine	E. I
496	15c Red Orange (189). Four copies, Very Fine	8.00
497	6c, 30c Banknotes (190, 208, 217). Very Fine	16.00
498	☒ 2c Green, 4c Green Strip of 3 on 2c Entire (211, 213, U312). Tied on Reg. cover clear Wolfe City, Texas pmk.	E. I
499	☒ 3c Vermillion, 5c Indigo on 2c Entire (214, 216, U312). Tied San Francisco, 1889 on cover to Germany, Fine	E. II
500	30c Orange Brown (217). Jumbo Margins, Very Fine	8.00
501	90c Purple (218). Very Fine	17.50
502	2c Pink (248). Clear Masonic, G in Square & Compass cancel, V. F.	E. I
503	2c Carmine, 1894-98 Issues, Eight diff. fancy cancels, includes Anchor, Pumpkin Faces, Four Leaf Clover nice strikes	E. I
504	☒ 1c Blue Green (300). Tied boxed St. Paul, Minnesota, State Fair Grounds, 1906, on leather souvenir card, stamp S. E. at T., V. F.	E. I
505	☒ 2c Navy (O36). Pair bit stained, tied with Newport, R. I. pmk. V. G.	E. I
506	☒ 1c Light Blue (U113). Tied oval Boston pmk. on attractive Illustrated Insurance Corner Card Cover showing 2 Bull Dogs, V. F.	E. I

CARRIER AND LOCALS

507	✉	Charleston, S. C. Honours City Express, 2c Bluish (4LB8, 11). Not tied on front with 3c 1851, Blue Charleston, S. C. pmk., Fine	65.00
508	✉	D. O. Blood & Co., 3c Black (15L7). Uncancelled on cover with red New York pmk. and red str. line Philada. Railroad markings, stamp has light crease from letter fold	75.00
509	✉	Brooklyn City Express Post, 2c Crimson (28L3). Not tied on attractive Troy Horse Corner Card with Clear oval Boyds City Express Post pmk, V. F. (Photo)	40.00+
510	✉	Essex Letter Express, New York, 2c Red (65L1). Uncancelled on cover with 3c 1851 tied New York, catalogs \$100.00 off cover, V. F.	—
511	✉	One Cent Despatch, Washington City, 1c Violet (112L1). Margins all around, barely tied on tiny cover, V. F. (Photo)	75.00
512	✉	Pomeroy's Letter Express, 5c Yellow (117L1). Horiz. Pair, red Paid cancel ties one stamp creased where letter was folded and photographed offset of stamps on cover, Interesting	—
513		Nineteenth Century, 274 stamps interesting & fancy cancels, V. G.-V. F.	E. III
514	✉	19th Century Covers, Twenty-four covers including few Illustrated, Good-V. F.	E. I

CONFEDERATE STATES

515	✉	Columbus, Ga., 5c Blue Postmasters Provisional (19XU2). Very Fine (Photo)	100.00
516	✉	Knoxville, Tenn., 5c Green Envelope on Green Paper (47UX1 var.) Unlisted on green, Paid cancel, Fine, catalogs \$225.00 on Blue (Photo)	—
517	★	Memphis, Tenn., 2c Blue Postmasters Provisional (56X1). Two shades, 1 tiny thin, other V. F.	18.00
518		Mobile, Ala., 5c Blue (58X2). Vert. Pair tied Mobile on small piece V. F. (Photo)	60.00
519	★	New Orleans La., 2c Blue (62X1). Very Fine	15.00
520	★	New Orleans, La., 2c Blue, 5c Brown (62X1, 62X3). Last large margins has tiny thin, First Fine	40.00
521	★	New Orleans, La., 2c Red (62x2). Very Fine	15.00
522	★	New Orleans, La., 5c Brown (62x3). Fine	25.00
523		New Orleans, La., 5c Ochre (62x3b). New Orleans pmk., V. F. (Photo)	50.00
524	✉	Raleigh, N. C., 5c Red Postmasters Provisional (68xU1). Very Good	30.00

525	✉	Raleigh, N. C., 5c Red Postmasters Provisional (68XU2). Blue Raleigh pmk on unusual watermarked cover, Fine	30.00
526	✉	Thomasville, Ga., 5c Black Postmasters Provisional (82XU1). Very Fine (Photo)	85.00
526A	✉	Cheraw S. C. Paid 5 handstamp on legal size cover, Fine	E. I
527	✉	5c Bright Green (1). Tied Charleston, S. C. on cover, Very Fine	10.00
528	✉	5c Bright Green (1). Tied Prattsville, Ala. on neat cover, V. F.	10.00
528 A	★	10c Dark Blue, Hoyer (2). Large margins, light crease, V. F. appearance	30.00
529	✉	10c Light Milky Blue 2). Large margins, tied Thomaston, Ga. Extremely fine	12.00
529A	★	5c Blue (4) Block, slight corner crease, V. F. appearance o. g.	30.00
529B	★	5c Light Blue (6). Sheet of 100, o. g., Very Fine	162.50
529C		5c Blue, well known N. Y. Bogus of #6, Pane of 92 and Corner Block of 25, V. F.	E. II
530	★	1c-20c Confederates 6-8, 11-14). Very Fine	20.30
531	★	2c Brown Red (8), Block, Fine-V. F.	18.50
531A	★	2c Brown Red (8) Block, Very Fine o. g.	18.50
532	★	1c-20c Confederates 8, 11-14). Fine-Very Fine	17.55
533		10c Blue, Frameline 10). Pair and Single rejoined forming vert. strip of three, 3 complete framelines on three sides, close at L., Mobile pmk. Fine-V. F. (Photo)	385.00
534	★	10c Dark Blue 11). Imprint Block of 9, Very Fine	E. II
534A	★	10c Blue (11). Imprint Strip of 5 "Bank Note Engraver, Richmond, Va. No. 4" attractive	E. I
535	★	10c Blue (11). Two Imprint Blocks, one toned paper, other V. F.	8.00+
535A	★	10c Greenish Blue (11). Pane of 100 with Plate No. 1, attractive though creased where folded in margins of two rows	100.00
536	★	10c Blue 11-12). Block of 9 of last, Two Blocks and Block of 6 of first, V. F.	20.70
537	★	10c Blue 11-12). Sixteen stamps in Pairs or strips, 1 Pair used, V. F.	15.60
538	★	10c Blue 11-12). Twenty-seven copies including shades, V. F.	24.30
539		10c Milky Blue 11). Margins all around, tied pretty Red Grid to small piece, V. F.	E. II
540		10c Blue 11-12). Fifteen copies including Town cancels, Fine-V. F.	22.50
541	★	10c Blue Perforated (12e). Single with a reference block with spurious perforations, Fine	15.00+

542 ★	20c Green (13). Seven copies including Vert. Pair, V.F.	15.75
543 ★	20c Green (13). Three Blocks all diff. shades, Fine-V.F.	30.00
544	3c Red (26). Tied grid, clear Charleston, S.C. Mar. 22, 1861 "pmk." Confederate Usage, Very Fine	E. II
545	3c Red Entire (U26) neat Cheraw, S.C. pmk. Confederate Usage, V.F.	E. II
546	3c Red Entire (U27) tied Warrenton, Geo. pmk. Confederate Usage, V.F.	E. II
547	Newspapers, Charleston Daily Courier, Mar. 19, 1861, Philadelphia Inquirer Feb. 18, 1863, interesting Civil War contents	E. I

END OF SALE — THANK YOU

PRICES REALIZED

THIS SALE

\$1.00

OR ENTIRE YEAR \$2.50

1957 SCOTT'S CATALOGS

VOLUME I	5.00
VOLUME II	6.00
COMBINED	9.50
U.S. SPECIALIZED	3.50

— ORDER NOW —

Catalogs will be shipped postfree and billed to you when shipped.



ROBERT A. SIEGEL

489 FIFTH AVENUE
NEW YORK CITY

SELLING YOUR COLLECTION ?

REALIZE IMMEDIATE CASH
AND HAVE ADVANTAGE OF SELLING AT MY AUCTIONS

I will advance on your collection immediate cash up to 75% of my appraisal value of what it should realize at auction.

It will then be sold at one of my coming auction sales. Attractive well illustrated catalogues issued, with stamps expertly and most advantageously lotted. All lotting done under my personal supervision. Commission is 20% of the gross and final settlement within thirty days after the sale. I have been steadily conducting stamp auctions in the United States for more than the past quarter of a century.

Valuable collections and stamp holdings especially wanted but will accept properties valued from \$500 upwards. Send stamps direct for my appraisal. Auction advance will be sent within 48 hours after receipt. If not entirely pleased stamps will be returned at my expense. If circumstances warrant due to bulk etc. I will travel to inspect valuable properties.

ROBERT A. SIEGEL

(Licensed and Bonded Auctioneer)

489 FIFTH AVENUE

NEW YORK CITY

(Tel. MU. 2-0980)

PRICES REALIZED
March 1st, 1957UNITED STATES
Nineteenth Century
Stamps and Covers

1	8.75	69	57.50	125	18.00	187	90.00	248	9.00	309	18.00	371	23.00	433	8.00	495	4.25
2	8.00	64	25.00	126	6.50	188	40.00	249	5.50	310	17.50	372	14.50	434	9.50	496	3.75
3	2.75	65	180.00	127	7.00	189	20.00	250	12.50	311	8.00	373	14.00	435	8.50	497	8.75
4	6.00	66	95.00	128	6.50	190	3.00	251	9.50	312	22.00	374	13.50	436	6.50	498	6.50
5	6.75	67	100.00	129	14.00	191	49.00	252	9.00	313	10.50	375	24.00	437	6.50	499	17.50
6	9.25	68	77.50	130	16.00	192	30.00	253	20.00	314	5.25	376	11.50	438	9.50	500	21.00
7	14.50	69	105.00	131	6.00	193	22.00	254	6.00	315	4.25	377	21.00	439	6.00	501	12.00
8	7.00	70	95.00	132	5.00	194	17.00	255	6.50	316	6.75	378	29.00	440	6.00	502	9.00
9	6.75	71	42.50	133	13.00	195	11.00	256	9.25	317	10.00	379	17.50	441	11.00	503	7.00
10	11.00	72	25.00	134	4.75	196	17.50	257	10.50	318	12.00	380	18.00	442	13.00	504	2.25
11	8.00	73	28.00	135	6.00	197	15.00	258	9.00	319	8.75	381	7.50	443	13.00	505	11.50
12	6.50	74	27.50	136	5.00	198	9.50	259	13.50	320	12.50	382	72.50	444	12.50	506	3.00
13	6.50	75	25.00	137	7.00	199	out	260	11.50	321	10.50	383	31.00	445	3.00	507	17.00
14	15.00	76	70.00	138	10.00	200	9.00	261	9.00	322	18.50	384	8.25	446	30.00	508	14.50
15	10.50	77	52.50	139	12.00	201	10.00	262	10.00	323	10.00	385	6.00	447	22.50	509	17.50
16	4.00	78	40.00	140	4.25	202	32.00	263	20.00	324	10.00	386	10.50	448	19.00	510	26.00
17	11.50	79	40.00	141	15.00	203	13.00	264	42.50	325	12.00	387	12.50	449	18.00	511	19.00
18	11.00	80	26.00	142	14.50	204	9.00	265	10.50	326	10.00	388	7.00	450	17.00	512	18.00
19	9.25	81	21.00	143	14.00	205	42.00	266	4.00	327	16.50	389	85.00	451	17.00	513	28.00
20	5.75	82	36.00	144	17.50	206	28.00	267	6.00	328	15.00	390	22.00	452	16.50	514	8.00
21	9.00	83	105.00	145	10.50	207	30.00	268	14.50	329	16.50	391	17.00	453	18.00	515	50.00
22	9.50	84	12.00	146	16.00	208	9.00	269	8.00	330	10.00	392	70.00	454	12.00	516	120.00
23	7.00	85	16.00	147	31.00	209	15.00	270	10.00	331	10.00	393	13.00	455	12.00	517	10.50
24	9.50	86	10.00	148	26.00	210	27.50	271	7.50	332	15.50	394	9.00	456	20.00	518	50.00
25	9.00	87	9.00	149	46.00	211	20.00	272	15.50	333	10.00	395	16.50	457	18.50	519	13.50
26	10.00	88	6.25	150	10.00	212	22.00	273	6.00	334	14.00	396	16.00	458	50.00	520	10.75
27	8.00	89	26.00	151	16.00	213	10.00	274	7.00	335	12.00	397	8.00	459	10.00	521	13.00
28	9.50	90	300.00	152	4.00	214	15.50	275	11.00	336	12.50	398	10.50	460	10.50	522	15.50
29	10.00	91	77.50	153	6.00	215	18.50	276	120.00	337	8.00	399	6.50	461	9.50	523	26.00
30	5.75	92	155.00	154	31.00	216	22.00	277	220.00	338	15.00	400	41.00	462	7.00	524	17.00
31	7.00	93	205.00	155	39.00	217	7.00	278	17.00	339	16.00	401	4.50	463	26.00	525	29.50
32	4.00	94	1175.00	156	19.50	218	10.00	279	8.00	340	8.00	402	9.50	464	11.00	526	57.50
33	9.00	95	240.00	157	12.00	219	8.50	280	5.00	341	11.50	403	11.50	465	10.00	526A	8.00
34	10.50	96	32.00	158	3.25	220	32.00	281	15.50	342	14.50	404	10.50	466	10.00	527	9.50
35	5.50	97	28.00	159	3.50	221	22.00	282	8.00	343	18.00	405	4.50	467	11.00	528	9.50
36	12.50	98	24.00	160	22.00	222	22.00	283	6.00	344	14.50	406	26.00	468	22.00	528A	6.75
37	7.00	99	22.00	161	180.00	223	9.50	284	11.50	345	15.50	407	26.00	469	28.00	529	17.00
38	10.50	100	41.00	162	27.00	224	14.50	285	10.00	346	12.00	408	2.75	470	41.00	529A	21.00
39	5.50	101	77.50	163	22.00	225	16.50	286	14.50	347	22.50	409	17.00	471	20.00	529B	82.50
40	3.25	102	21.50	164	18.00	226	20.00	287	9.50	348	13.00	410	7.00	472	21.00	529C	5.25
41	9.75	103	14.50	165	18.50	227	7.00	288	21.00	349	36.00	411	9.25	473	23.00	530	14.00
42	10.00	104	30.00	166	25.00	228	12.00	289	12.50	350	10.50	412	6.00	474	26.00	531	8.00
43	5.50	105	67.50	167	50.00	229	5.75	290	18.50	351	14.00	413	8.00	475	18.00	531A	12.50
44	9.00	106	23.00	168	26.00	230	7.00	291	8.75	352	11.50	414	15.00	476	13.00	532	13.50
45	5.25	107	45.00	169	17.50	231	5.00	292	6.25	353	12.00	415	9.50	477	17.00	533	285.00
46	9.00	108	29.00	170	15.00	232	26.00	293	16.00	354	12.00	416	18.50	478	23.00	534	15.00
47	8.50	109	32.00	171	12.50	233	17.00	294	13.50	355	6.50	417	20.00	479	62.50	534A	5.50
48	11.00	110	40.00	172	10.00	234	6.25	295	40.00	356	9.50	418	21.00	480	6.00	535	6.75
49	38.00	111	43.00	173	21.00	234A	19.00	296	19.00	357	7.50	419	13.50	481	8.50	535A	70.00
50	8.00	112	23.00	174	31.00	235	22.00	297	17.00	358	9.00	420	15.00	482	13.00	536	14.50
51	20.00	113	8.75	175	20.00	236	62.50	298	19.00	359	8.25	421	8.50	483	32.00	537	9.25
52	15.50	114	4.00	176	31.00	237	12.00	299	8.00	360	9.50	422	8.00	484	6.75	538	12.00
53	9.00	115	5.00	177	12.00	238	16.00	299A	41.00	361	13.00	423	6.00	485	11.00	539	7.50
54	137.50	116	102.50	178	71.00	239	9.00	300	8.00	362	17.00	424	6.00	486	3.00	540	14.50
55	4.75	117	7.00	179	12.00	240	4.75	301	28.00	363	14.00	425	7.50	487	4.75	541	9.25
56	200.00	118	3.75	180	6.00	241	15.00	302	24.00	364	5.75	426	5.50	488	9.00	542	10.50
57	900.00	119	3.00	181	48.00	242	8.50	303	5.00	365	4.50	427	9.00	489	12.50	543	20.00
58	550.00	120	25.00	182	15.50	243	7.50	304	8.00	366	21.50	428	11.00	490	9.50	544	11.50
59	60.00	121	5.00	183	18.00	244	10.50	305	14.50	367	16.00	429	15.00	491	7.50	545	12.00
60	75.00	122	22.00	184	16.00	245	21.50	306	13.00	368	18.50	430	9.00	492	38.00	546	11.50
61	36.00	123	8.00	185	22.00	246	21.00	307	18.50	369	37.00	431	12.00	493	3.00	547	10.50
62	35.00	124	13.00	186	3.25	247	22.00	308	19.00	370	30.00	432	22.00	494	13.00		