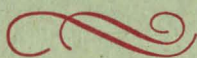


168th SALE

UNITED STATES
STAMPS and COVERS
19th and 20th CENTURY



At Public Auction

TWO SESSIONS

DECEMBER 16th, 17th, 1953

2 p. m. each day

Robert A. Siegel
AUCTIONS

505 FIFTH AVENUE

NEW YORK CITY

CONDITIONS OF SALE

1. The terms of sale are strictly cash to the highest bidder. All buyers are expected to pay for lots within three days of receipt, unless special arrangements have been made prior to the sale.
2. All bids are per lot as numbered in the catalogue and not per piece, unless otherwise announced by the auctioneer at the time of sale.
3. Any lot the description of which is incorrect is returnable only within three days of receipt. All disputed lots must be returned intact as received. Lots containing five or more stamps are not returnable at any time. No lots may be returned by purchasers who have had the opportunity to examine them before the sale.
4. Successful mail bidders, unless they are known to us or supply acceptable references, will be notified of the amount of the lots secured for them, and are expected to send payment in full before the lots are forwarded.
5. If the purchase price has not been paid within the time limit, or lots taken up within seven days from date of sale, they may be resold and any losses arising from such sale charged to the defaulter.
6. All stamps are sold as genuine, except where sold "As Is". Claims for any lot proving otherwise, must be made within two weeks from date of sale.
7. The right is reserved to group two or more lots, also withdraw any lot or lots from the sale, or to act on behalf of the seller.
8. Until paid for in full all lots remain the property of Robert A. Siegel.
9. No commission is charged for buying at our sales, but all forwarding charges will be added to the purchase price.
10. Lots will be sent for inspection, provided such lots are returned to us the same day as received. Postage and registration both ways will be charged. Approximate values of lots will be given on request.
11. The placing of a bid shall constitute acceptance of the forgoing conditions of sale.

ROBERT A. SIEGEL

GREGORY MOZIAN, Licensed Auctioneers

In sending bids, always state the highest price you are prepared to pay for the lot. Your limit will not be used as a starting bid unless absolutely necessary.

DESCRIPTIONS

Superb—the finest condition for noteworthy, outstanding copies.

Very Fine (VF)—means that there is a slight deviation from the above.

Fine (F)—means that the perforations do not touch the design on issues after 1890, but in some cases may just touch in earlier issues; if used, fairly lightly cancelled.

Very Good (VG)—means that the appearance is generally fine but that the perforations cut the design slightly.

Good (G)—means average off-centering; or fairly attractive with slight defects. Original gum is not to be expected on 19th Century stamps up to 1888 unless so stated.

Scott's 1953 Specialized United States Catalogue is used for cataloging our lots of United States and Scott's Standard Catalogue, 1953 for others.

WE SOLICIT FINE MATERIAL FOR FUTURE SALES

FIRST SESSION

WEDNESDAY, DECEMBER 16th, 1953 — 2 P. M.

STAMPLESS COVERS

- 1 ☒ **Batavia, Ohio, July 26, 1837 1837** straight line in Otagon, clear strike on cover front only —
- 2 ☒ **Baltimore Railroad, U. S. Express Mail, Milwaukee, Wis, Terr. (1847).**
3 diff. Stampless. Fine —
- 3 ☒ **Binghamton, N. Y.** black circle, large **Fancy Paid 3** in scroll, V. F. —
- 4 ☒ **F. A. Dentzel, Agt. P. O. N. O. Paid** in red oval, (1852) Fine —
- 5 ☒ **"Fort Covington, N. Y. July 19, 1840"** black str. line (in 4 lines) Fine... —
- 6 ☒ **"Ft. Covington, N. Y. Mar. 14, 1831"** red str. line (in 4 lines). V. F. —
- 7 ☒ **Fulton, N. Y.,** red circle, "Paid 3" on illustrated **Phrenology** cover, Fine —
- 8 ☒ **Glassborough, N. J. "5"** in **green** circle, Fine —
- 9 ☒ **Hudson Riv. Mail N. Y.** in red circle, two covers, "10", V. F. —
- 10 ☒ **Hudson Riv. Mail N. Y.** in red circle two covers. "5" and "10" V. F. —
- 11 ☒ **Hudson Riv. Mail N. Y.** in red circle two covers, diff. size "10", V. F. —
- 12 ☒ **Lexington Ky. "10" Blue circle** on folded letter written and signed by **Henry Clay** in 1848, from Ashland, Fine —
- 12A ☒ **New York City,** two covers to England, both with colored **adv. corner** cards, V. F. —
- 13 ☒ **Post Office Dept.** Four diff. imprints or handstamps, Fine lot —
- 14 ☒ **Red Hook Landing (N. Y.) "Free"** in red str. line (1831), Fine..... —
- 15 ☒ **Troy & New York Steamboat** in blue box, "7 cts." in circle, V. F. —
- 16 ☒ **Troy, N. Y., Steam, "7 cts."** in circle, all markings in blue, (1847), V. F. —
- 17 ☒ **"Whitehall Nov. 29, N. Y."** in two red lines, "Free", Fine —
- 18 ☒ **Stampless,** 15 diff. in includes Way 11, Steamer 5, str. line New York, fancy 5, Fine lot —

POSTMASTER PROVISIONALS

19	New Haven, 5c Red, Reprint (8XUIr), Very Fine	—
20	New York, 5c Bluish, Without Signature (9X1c), Red town cancel, repaired, V.F. appearing	85.00
21 ★	Providence, 5c Black (10X1). Margins all around, V.F. (Photo)	32.50
22 ★	Providence, 5c Black (10X1). Small margins or touching	32.50

1847 ISSUE

23	5c Red Brown (1). Red grid. Margins all around, V.F. (Photo)	27.50
24	5c Brown (1). Red grid cancel, margins all around, V.F. (Photo)	27.50
25	5c Dark Brown (1a). Margins all around, Red grid, V.F. (Photo)	27.50
26	5c Brown (1). Bright Blue grid, Margins all around, V.F. (Photo)	32.50
27	5c Orange Brown (1b). Margins all around, Red grid cancel, V.F. (Photo)	40.00
28	5c Dark Brown (1a). Margins all around, smaller at right, red grid cancel	(Photo) 27.50
29	5c Orange Brown (1b). Margins all around, though smaller at B., light Red grid	(Photo) 40.00
30	5c Orange Brown (1b). Margins all around, Red cancel, V.F. (Photo)	40.00
31	5c Red Brown (1). Margins all around, Red grid, V.F. (Photo)	27.50
32	5c Red Brown (1). Margins all around, Red grids, V.F. (Photo)	27.50
33	5c Red Brown (1). Square Red grid, margins all around, V.F. (Photo)	27.50
34	5c Red Brown (1). Tied on small piece with red grid and U. S. Express Mail, Boston cancel, Margins all around though smaller at B.	—
35	5c Red Brown (1). Margins all around, tied on small piece with attractive Poughkeepsie, N. Y. pmk. V.F. (Photo)	32.50
36	5c Red Brown (1). Large Red grid. Margins all around, small at B.	27.50
37	5c Brown (1). Margins all around, though small at B., dark red grid, Fine	27.50
38	5c Red Brown (1). Blue cancel, small margins all around, Fine	32.50
39	5c Brown (1). Margins all around though small at B. Red grid, Fine (Photo)	27.50
40	5c Red Brown (1). Blue Numeral "5" cancel, margins all around, slight corner crease, V.F. appearance	45.00
41	5c Brown (1). Margins all around, slight thin, V.F. appearance	27.50
42	5c Red Brown (1). Three large margins, touches at B. Red grid cancel	27.50

43	5c Red Brown (1). Red cancel, margins 3 sides, in slightly at R.	27.50
44	5c Red Brown (1). Blue grid, Fine	32.50
45	5c Red Brown (1). Red grid, large margins except touches at upper L. corner	27.50
46	5c Red Brown (1). Red grid cancel, Fine	27.50
47	5c Red Brown (1). Margins all around, Blue Troy pmk. Dot in "S" variety , V. F. (Photo)	40.00
48	5c Red Brown (1). Margins all around. Red grid, light ironed out crease	27.50
49	5c Brown (1). Margins all around, Blue town cancel, light ironed out crease, V. F. appearance	32.50
50	5c Brown (1). Blue grid cancel. Margins all around, small at B.	32.50
51	5c Red Brown (1). Barely cancelled, three large margins, touches R.	27.50
52	5c Red Brown (1). Blue Numeral "5" in oval , Fine	(Photo) 45.00
53	5c Brown (1). Unusual type Red Paid in grid , trivial marginal tear, Fine appearance	42.50
54	5c Orange Brown (1b). Margins all around, closed tear, has English receiving cancel in black	—
55	5c Red Brown (1). Red St. Louis pmk. margins all around, small thin	32.50
56	5c Red Brown (1). Red Target cancel, margins all around, slight creases	27.50
57	5c Red Brown (1). Red Square grid, margins 3 sides, in slightly top	27.50
57A	5c Red Brown (1). Red grid cancel, just touches at L. Fine	27.50
58	5c Red Brown (1). Blue "5 cts" cancel, Fine	32.50
59	5c Red Brown (1). Blue town cancel, margins three sides, in slightly top	32.50
60	5c Red Brown (1). Odd Red grid, small thin, Fine appearance	27.50
61	5c Dark Brown (1a). Black grid cancel, Fine	42.50
62	5c Red Brown (1). Margins all around, light corner crease, odd Orange cancel	60.00
63	5c Brown (1). Black town cancel, just touches partly two sides	62.50
64	5c Brown (1). Margins all around, two small thins, Orange grid cancel (Photo)	70.00
65	5c Red Brown (1). Blue town cancel, cut close, V. G.	32.50
66	5c Red Brown (1). Large margins all around, pen cancelled	15.00
67	5c Red Brown (1). Cleaned pen cancel	15.00
68	5c Red Brown (1). Horiz. Pair, Blue grids, margins all around, V. F. (Photo)	82.50

69	5c Red Brown (1). Horiz. Pair, Blue grids and part of English receiving cancel, margins all around, left stamp light crease (Photo)	82.50
70	5c Brown (1). Horiz. Pair, blue town and Ms. cancels, two small tears at B., nice appearance	82.50
71	5c Six Diff. Shades (1, a, b). Margins all around on each, each has fault, V.F. appearing	185.00
72	✉ 5c Red Brown (1). Margins all around tied on cover with blue "5" in circle, cover lightly stained (Photo)	—
73	✉ 5c Red Brown (1). Tied on cover with red grid from New York to IOWA CITY, IOWA, also Ms. "Due 5", Fine	37.50
74	✉ 5c Red Brown (1). Tied by New York square grid, large margins all around, cover has few ink spots and small pen stroke on stamp	37.50
75	10c Black (2). Red grid cancel, margins all around, V.F. (Photo)	80.00
76	10c Black (2). Red grid, margins all around, V.F. (Photo)	80.00
77	10c Black (2). Red grid, margins all around, V.F. (Photo)	80.00
78	10c Black (2). Margins all around, tied on small piece with double strike red St. Louis town pmk. V.F. (Photo)	80.00
79	10c Black (2). Red grid, margins all around, though smaller at B. Very Fine	(Photo) 80.00
80	10c Black (2). Red grid, margins all around, small ink marking on back, V.F. (Photo)	80.00
81	10c Black (2). Red grid cancel, margins all around, V.F. (Photo)	80.00
82	10c Black (2). Red grid, margins all around, very light crease, V.F. appearance	(Photo) 80.00
83	10c Black (2). Red grid, margins all around, ironed out crease, V.F. appearance	(Photo) 80.00
84	10c Black (2). Red grid, margins all around, light crease, V.F. appearance	(Photo) 80.00
85	10c Black (2). Margins all around, trivial nick in margin lower R. corner, V.F. appearance	(Photo) 80.00
86	10c Black (2). Red grid, margins all around, ironed out crease, V.F. appearance	(Photo) 80.00
87	10c Black (2). Double Transfer in "Post Office" Red grid cancel, margins 3 sides, touches at L. (Photo)	150.00
88	10c Black (2). Red grid, margins two sides, touches at B. & R. (Photo)	80.00
89	10c Black (2). Large Red Numeral "10" cancel, margins all around, tiny tear at top, V.F. appearance	(Photo) 100.00

90	✉	10c Black (2). Tied on cover with blue Philadelphia town, margins all around though close U. R. corner, Penn Mutual Life Insurance oval imprint on back flap, Fine	100.00
91	✉	10c Black (2). Tied with red grid from New York, margins all around, stamp creased	100.00
92	★	5c Red Brown, Reproduction (3). Margins all around, thin spot, V. F. appearance	37.50

1851 ISSUE

93		1c Blue Imperf. Type I, Proof on stamp paper, V. F.	—
94		1c Blue, Ty. II (7). Margins all around, Very Fine (Photo)	10.00
95		1c Blue, Ty. II (7). Margins all around, V. F.	10.00
96		1c Blue Ty. II (7). Margins all around, V. F.	10.00
97		1c Blue, Ty. II (7). Margins all around, V. F.	10.00
98		1c Blue, Ty. II (7). Horiz. Pair, Very Fine	27.50
99		1c Blue, 1c Dark Blue (7, 7a). Red cancel on one, Fine	24.00
100		1c Blue, Ty. II (7). Two shades, small thins, Fine-V. F. appearance	20.00
101		1c Blue, Ty. II (7). Three copies, Fine-V. F.	30.00
102		1-24c, 1851-67 Issues (9-10, 14, 36, 77-78, 97), V. G.-Fine	59.00
103		1c Blue Ty. IV (9). Exceptionally large margins all around, V. F. (Photo)	7.50
104		1c Blue Ty. IV (9). Margins all around, shows parts of 3 other stamps, V. F. (Photo)	7.50
105		1c Blue, Ty. IV (9). Exceptionally large margins, recut once top, twice bot. Very Fine	13.50
106		1c Blue, Ty. IV (9). Recut once top, twice at B. V. F.	13.50
107		1c Blue, Ty. IV (9). Red Carrier cancel V. F. (Photo)	12.00
108		1c Blue, Ty. IV (9). Margins all around, Red and Black cancels, V. F.	10.00
109		1c Blue, Ty. IV (9). Large margins, Very Fine	7.50
110		1c Blue, Ty. IV (9). Margins all around, V. F.	7.50
111		1c Blue, Ty. IV (9). Margins all around, V. F.	7.50
112		1c Blue, Ty. IV (9). Sheet margin at left, V. F.	7.50
113		1c Blue, Ty. IV (9). Large margins V. F.	7.50
114		1c Blue, Ty. IV (9). Horiz. Pair, left stamp has minor faults other V. F.	22.50
115		1c Blue, Ty. IV (9). Vertical Pair, light creases V. F. appearance	22.50

116	1c Blue Ty. IV (9). Horiz. Strip of 3, attractive appearance though creased	35.00
117	1c Blue, Ty. IV (9). Five copies, Black Red and Blue cancels, Fine-V. F.	42.00
118	1c Blue Ty. IV (9). Seven copies includes shades, Red, Blue, Green cancels, all have slight faults, Very Fine appearance	53.50
119	☒ 1c Blue, Ty. IV (9). Tied with Red grid on large embossed Valentine cover with Valentine enclosed, Very Fine	—
120	☒ 1c Blue, Ty. IV (9). Tied on cover with red N. Y. Carrier cancel, Fine	—
121	☒ 1c Blue, Ty. IV (9). Tied on folded cover containing very attractive illustrated Mount Vernon Hotel, Cape May, N. J. circular	—
122	★ 3c Orange Brown (10). Margins all around, slight corner crease	35.00
123	☒ 3c Orange Brown (10). Neat Paid in oval , Very Fine	(Photo) —
124	3c Orange Brown (10). Double strike of Paid in black, Fine	—
125	☒ 3c Orange Brown (10). Tied pretty fancy blue geometric design, Eastport, Miss. pmk. cover slightly stained	—
126	☒ 3c Orange Brown (10). Tied with Paid in Unusual grid from Ashburn—ham, Mass. V. F.	(Photo) —
127	☒ 3c Orange Brown (10). Tied on cover with fancy geometric from Louisville, Ky. Fine and attractive	(Photo) —
128	☒ 3c Orange Brown (10). on cover ,blue "Lowell,, Ms. Aug. 18 3 cts Paid" pmk, V. F.	—
129	☒ 3c Orange Brown (10). on cover with corner card, red Lawrenceburg, Ind. pmk. Fine	—
130	☒ 3c Orange Brown (10). on cover from Toledo to Buffalo with fancy blue scroll Steamboat , Fine	—
131	☒ 3c Orange Brown (10). Ms. cancel on cover, blue Buffalo pmk. and Steamboat in fancy black scroll, Fine	—
132	☒ 3c Orange Brown (10). Two tied on cover with black fancy geometrics from Louisville, Ky., V. F. and attractive cover	(Photo) —
133	☒ 3c Orange Brown (10). Sheet corner pair tied with San Francisco pmk. also ms. 1852 cancel, Fine	—
134	3c Red (11). Large numeral 5 cancel. Excellent strike	(Photo) —
135	3c Red (11). Horiz. Strip of four. Ragged margins touching design in some places.	—
136	☒ 3c Red (11). Block neat Centreville, Mich. pmk., Plate 4, cut in partly top and R.	40.00
137	3c Imperforate (11). Ten copies, nice group of shades, Fine-V. F.	—

138	☒	3c Red (11) . Tied with blue Horseheads, N. Y. pmk. V. F.	—
139	☒	3c Red (11) . Tied from Altoona to Phila. on registered cover with large Red "R" , V. F.	—
140	☒	3c Red (11) . Tied from Boston to Baltimore, unusual blue marking " Missent South " Fine	—
141	☒	3c Red (11) . Tied with Ultramarine Woodstock Vt. pmk. with unusual type 3 Paid in cancel, Fine	—
142	☒	3c Red (11) . Tied with Green Double Circle Waterville, Conn. with fancy scroll work within circle, Fine, Scarce	—
143	☒	3c Red (11) . Tied on small cover with Utica, N. Y. Oval , Fine	—
144	☒	3c Red (11) . Cancelled with odd pmk. from Mason Village, N. H. on cover, Fine	—
145	☒	3c Red (11) . Tied with two line Steam Boat pmk. to Albany, Fine	—
146	☒	3c Red with 2c Charleston Carrier (11, 4LB8) , first tied with blue Charleston pmk, latter Black pen, Fine	65.00
147	☒	3c Red (11) . Fifteen diff. Advertising covers, Fine lot	—
148		3c Red, 3c Green (11, 136) , first has large crack with closed tear, latter unused split grill	45.00
149	☒	3c Red (11, 25-26) . Four diff. attractive Hotel covers	—
150	☒	3c, 3c, 10c 1851-61 Issues (11, 35, 65) . Three covers with Florida pmks. Key West ,Pierceville, St. Augustine, V. G.	—
151		5c Red Brown (12) . Margins 3 sides, cut in at left, light town cancel	70.00
152		10c Green, Ty. II (14) . Margins all around, V. F.	16.00
153		10c Green, Ty. II (14) . Margins all around, V. F. (Photo)	16.00
154		10c Green, Ty. II (14) . Margins all around, V. F.	16.00
155		10c Green, Ty. II (14) . Margins all around, light Blue pmk. V. F.	16.00
156		10c Green, Ty. II (14) . Large margins, V. F. (Photo)	16.00
157		10c Green Ty. II (14) . Large margins, thin in one margin, V. F. appearance	16.00
158		10c Green, Ty. II (14) . Two margins all around, one tiny thin, other light crease	32.00
159		10c Green, Types II, III (14-15) . Light creases V. F. appearance	32.00
160		10c Green, Types II, III (14-15) . Light creases, V. F. appearance	32.00
161	☒	10c Green, Ty. II (14) . Margins all around, tied on cover from Portland, Me. to Cuba, various transit markings	20.00
162		10c Green, Ty. III (15) . Margins all around, V. F. (Photo)	16.00

163	10c Green, Ty. III (15). Margins all around, V. F.	(Photo)	16.00
164	10c Green, Ty. III (15). Margins all around, V. F.		16.00
165	10c Green, Ty. III (15). Margins all around, V. F.		16.00
166	10c Green, Ty. III (15). Margins all around, V. F.	(Photo)	16.00
167	10c Green, Ty. III (15). Margins all around, V. F.	(Photo)	16.00
168	10c Green, Ty. III (15). Margins all around, V. F.	(Photo)	16.00
168A	☒ 10c Green, Type III (15). Margins all around, tied with blue Toledo, O. to Calif. V. F.		20.00
169	12c Black (17). Margins all around, V. F.	(Photo)	22.50
170	12c Black (17). Margins all around, V. F.	(Photo)	22.50
171	12c Black (17). Margins all around, though smaller at B. Very Fine		22.50
172	12c Black (17). Small but complete margins all around, Fine		22.50
173	12c Black (17). Margins all around, though close at two points, Fine		22.50
174	12c Black (17). Horiz. Pair, one stamp margins all around and V. F. other touches slightly	(Photo)	60.00
175	12c Black (17). Horiz. Pair, blue town cancel, light stain, Fine appearance		60.00
176	12c Black (17). Vertical Pair, Margins 3 sides cut in R., top stamp thin		60.00

1857 ISSUE

177	1c Blue Type I (18). Horiz. Pair, faults		85.00
178	1c Blue, Ty. II (20). Fine		12.50
179	1c Blue, Type IIIa (22). Horiz. Strip of 3, light Ms. cancel, Fine		80.00
180	☒ 1c Blue, Ty. IV (23). Tied on circular, well centered, few perforations slightly soiled		35.00
181	★田 1c Blue ,Ty. V (24). Block, small thins, V. F. appearance		18.50
182	★田 1c Blue Ty. V (24). Two Blocks, diff. shades, light creases, well centered, O. G.		37.00
183	1c Blue, Ty. V (24). Green town cancel, V. F.		7.50
184	1c Blue ,Ty. V (24). Four Horiz. Pairs, Fine-V. F.		16.00
185	1c Blue, Ty. V (24). Thirteen copies, includes pairs, strip, some with Ms. cancels, mostly Fine-V. F.		25.00
186	1c Blue Ty. V (24). Thirty-six copies, includes shades, town cancels, Way, Reds, City Delivery, Blues, three have str. edges, two unused, Fine-V. F. Lot		63.00+
187	☒ 1c Blue, Ty. V (24). Two tied on large illustr. Insurance cover showing Dog and Safe, V. F.		—

188	✉	1c Blue, Ty. V (24). Strip of 3 tied from Annville, Pa. on Patriotic cover, Flag and Liberty, Fine	—
189	✉	1c Blue, Ty. V (24). Tied from Troy on attractive circular illustr. with Eagle and Flag, V. F.	—
190		1c Blue, Ty. V (24). 68 stamps on 45 Covers, various Carrier usages, multiples, Reds etc. V. G.—V. F.	—
191	✉	1c Blue (24, 63 two). 3c rate, all tied on cover from New York, scarce as mixed usage , Fine though bit ragged at R.	—
192	★田	3c Red (26). Block , Fine o. g.	7.50
193	★田	3c Red (26). Block of 18, Fine	32.50
194		3c Red (25). Neatly cancelled with extremely rare type " N. Y. Supplementary " in double circle, V. F. (Photo)	—
195		3c Red (26). Double Transfer, Rosettes double, Line thru "Postage", Ms. cancel, 3 short perfs.	40.00
196		3c Red (26). Twelve copies includes Shades, Pair, Paid, (Paid) All, Fine—V. F.	—
197	✉	3c Red (26). On cover, odd fancy Bellvale, N. Y. pmk. two rows of dashes and small circles in pmk. unusual, V. F.	—
198	✉	3c Red (26). Tied with large Rosette cancel from N. Y. on cover, Fine	—
199	✉	3c Red (26). Tied from Kingston, N. Y. on scarce Caricature Patriotic , V. F. (Photo)	—
200	✉	3c Red (26). Tied from Elmira, N. Y. on Patriotic , Liberty Bell, some stains	—
201	✉	3c Red (26). Tied on cover with corner card of Barnums Museum , Fine	—
202	✉	3c Red (26). Tied on illustr. cover showing Cow ,Pigs, Farm Girl, V. F.	—
203	✉	3c Red (26). Four diff. illustr. Adv. Corner Cards, Fine	—
204	✉	3c Red (26). Four diff. illustr. advert. covers, Fine	—
205	✉	3c Red (26). Ten diff. covers, Forwarded, Paid, Due 3, Advertised, Madison, Conn. Star, Canton, Miss. Triangle, Chicopee Star, Red Georgetown, N. Y. Illustr., V. G.—V. F.	—
206	✉	3c Red (26). Twenty-two Advertising covers, some illustr. mostly diff. Fine lot	—
207		5c Red Brown (28). Horiz. Strip of 3 , stamp at left two short perfs. pair at right Fine	(Photo) 135.00
208		5c Brown (29). Fine	18.50
209		5c Brown (29). New Orleans pmk. Fine	18.50
210	★	5c Brown (30a). Fine	16.00

211	5c Brown, Ty. II (30a). Blue Baltimore town cancel, V. F.	20.00
212	5c Brown (30a). Town cancel, Fine	15.00
213	5c Brown, Type II (30a). Rejoined Pair. Light creases and some short perfs. Fine appearing	30.00
214	10c Green, Ty. II (32). Fine	12.00
215	10c Green, Ty. II, III (32-33). First Fine, latter well centered, one short perf.	21.00
216 ★	10c Green, Type III (33). Light crease. Well centered (Photo)	60.00
217	10c Green, Ty. III (33). Two shades, well centered, one has short perf.	18.00
218	10c-30c, 1857 Issue (33, 35-38). Last 2 have red cancels, three are reperfed, nice appearing	76.00
219	10c Green, Ty. V (35). Six copies, Fine-Very Fine	27.00
220	12c Black (36). Blue town cancel, Very Fine	11.00
221 ★	24c Grey Lilac (37). Light corner crease, Fine appearance	22.50
222	24c Lilac (37). Blue town cancel, V. F.	25.00
223	30c Orange (38). Red grid cancel, Very Fine (Photo)	35.00
224	30c Orange (38). Well centered, one short perf. (Photo)	32.50
225	30c Orange (38). Red grid cancel, Fine	35.00
226 ★	1c Bright Blue, Reprint (40). Small thin, V. F. appearance	30.00

1861 ISSUE

227 P	1c Indigo August ,Perforated Proof (P56) str. edge at top	—
228	10c Dark Green, August (58). Red grid cancel, wide str. edge margin at L. Well centered (Photo)	65.00
229 ★	24c Violet, August (60). Tiny creases, Fine appearance (Photo)	300.00
230	1c Blue (63). Pretty Red Br. Pkt. Paid cancel, V. F.	—
231	1c Blue (63). Thirteen copies, well centered, includes shades, red, blue, paid, Very Fine lot	24.25
232 ☒	1c Blue (63). Three tied with Perryville, Md. pmk. on Patriotic , Commander in Chief, Grant, Fine	—
233 ☒	1c Blue (63). 49 stamps on 35 covers, includes Red Carriers, Grills, Carrier usages, Good-Fine	—
234 ★田	3c Rose, 3c Rose Red (65). Two Blocks, one has wide guide line str. edge, Fine, O. G.	14.00
235	3c Rose (65). Neat Blue negative U. S. cancel, V. F.	—

- 236 **3c Rose (65)**. Neat **Mortar & Pestle** cancel, Fine, Scarce **(Photo)** —
- 237 **3c Rose (65)**. Two, Paid in Rectangle, large "S" cancels, clear strikes, V. G. —
- 238 **3c Rose (65)**. Eleven **Fancy Cancels** includes Checkerboard, 3, 5, 10, U. V., geometrics, Fine strikes, few minor faults —
- 239 **3c Rose (65)**. Sixteen **Fancy Cancels** includes Shield, geometrics, Stars, Cog Wheels few faults, nice strikes —
- 240 **3c Rose (65)**. Seventeen diff. **Fancy Cancels** includes Heart, fancy Stars, False Teeth ,geometrics, nice strikes, Good-Fine —
- 241 **3c Rose (65)**. Forty-three copies mostly with interesting **cancels** included Pairs, Paid 3, Stars, "1" in Circle, 3, Cog Wheels, geometrics, Fine-V. F. —
- 242 **3c Rose (65)**. Tied with very fine strike of of West Meriden, Conn. **Devil & Pitchfork** on cover, envelope has small tear, very attractive **(Photo)** —
- 243 **3c Rose (65)**. Very Fine strike of Albany **U. S.** tied on cover **(Photo)** —
- 244 **3c Rose (65)**. On cover with "**Blue Earth City, Minn.**" pmk. Fine —
- 245 **3c Rose (65)**. Tied on **Grant and Colfax** Campaign cover, Fine **(Photo)** —
- 246 **3c Rose (65)**. Tied from New York with **Boyds Local (20L17)**, cancelled but not tied on Flag **Patriotic** cover, Fine —
- 247 **3c Rose (65)**. Tied with Red **Contocook, N. H.** pmk. on **Patriotic** cover, Fine —
- 248 **3c Rose (65)**. Str. edge copy tied with **Paducah, Ky.** pmk. on Patriotic, Woman, Shield, "Death to Traitors", Fine —
- 249 **3c Rose (65)**. **Patriotic** cover Flag, 75th Ohio Vols. **Jacksonville, Fla.** pmk. stamp has target cancel not tied —
- 250 **3c Rose (65)**. Cancelled with attractive blue **Shield** on cover, **Davenport, Ioa.** pmk. Fine **(Photo)** —
- 251 **3c Rose (65)**. Cancelled large **U. S.** from **Albany, N. Y.** on cover, stamp repaired, clear strike —
- 252 **3c Rose (65)**. Pair each with large **U. S.** cancel, not tying, also **N. Y. Registered** pmk. on cover, Fine **(Photo)** —
- 253 **3c Rose (65)**. Four covers, "Held for Postage", Passaic, N. J. Oval, Amherst fancy, Lock Haven, Pa. fancy star, V. G.-Fine —
- 254 **3c Rose (65)**. Three diff. **Patriotic** covers, Fort Federal Hill, Baltimore, Gen. Hooker, 50th Engineers, Fine lot —
- 255 **3c Rose (65)**. Six diff. **Patriotic** covers from Sedalia, Mo.; Covington, Ky.; Monticello, N. Y.; Scipio, Logansport, Ind.; Shelbyville, Tenn. V. G.-Fine —

256	☒	3c Rose (65). Ten diff. attractive Advertising covers, mostly illustrated	—
257	☒	3c Rose (65). Eleven diff. illustrated advert. covers, Fine lot	—
258	☒	3c Rose, 2c Black, 24c Gray Lilac, two (65, 73, 78). Tied on cover to Batavia with fancy New York pmks, various transit markings, Fine (Photo)	—
259	☒	1c-7c, 1861-70 Issues (65, 112, 114, 160, U76). Five diff. stamps tied on registered cover to Diena in Italy in 1876 with corner card of stamp dealer Wm. P. Brown, Fine	—
260		5c Buff (67). San Francisco Cog Wheel cancel, V.F.	(Photo) 40.00
261	★	10c Yellow Green (68). Fine, O.G.	8.00
262		10c Green (68). Eight copies, well centered, Shades, Very Fine	12.00
263		10c Green (68). Eight copies, Shades, Star, Red, Transit mark Fine-V.F.	—
264	☒	10c Green (68). Tied with " Lake Champlain S.B. " (Steamboat) pmk. to Montreal, Fine, Scarce	—
265	☒	10c Green, 5c Red Brown (68, 75). Four of first, partly tied on cover to China, Fine	31.00
266	☒	10c Green (68). Thirty-two covers, Good-V.F.	—
267		12c Black (69). Two, Very Fine	11.00
268		12c Black (69). Six copies, Fine-V.F.	33.00
269	★	12c Black, 30c Orange (69, 71). Perfs. in one side, V.G.	41.00
270		12c Black, 30c Orange (69, 71). Very Fine	13.50
271		12c-90c, 1861 Issue (69-72). Minor faults V.F. appearing	45.50
272		12c-90c, 1861 Issue (69-72). Minor faults, V.F. appearance	45.50
273		24c Red Lilac (70). Red grid cancel, Fine	14.00
274		24c Steel Blue (70b). Very Fine	35.00
275		24c Blackish Violet (70c). Fine	20.00
276		30c Orange (71). Cog Wheel cancel, Very Fine	8.00
277		30c Orange (71). Two each with diff. attractive Cog Wheel cancels, one shows indelible mark from back, well centered	16.00
278		90c Blue (72). Tiny corner crease, V.F. appearance	20.00
279	★田	2c Black (73). Block , perfs in at B. Very Good, O.G.	32.50
280	★田	2c Black (73). Block , Very Good	32.50
281		2c Black (73, 87). Very Fine	6.50
282		2c Black (73). Four copies, well centered , Very Fine	—
283		2c Black (73). Four copies, well centered , Very Fine	—

284	2c Black (73). Four copies, well centered , Very Fine	—
285	2c Black (73). Four copies, well centered , Very Fine	—
286	2c Black (73). Four copies, well centered, slight faults	—
287	2c Black (73). Five copies, well centered , Very Fine	—
288	2c Black (73). Five copies, includes Shield, Cog Wheel, Blues, Fine-V. F.	—
289	No lot.	
290	✉ 2c Black (73). Tied with Fancy Star on small cover, Fine	—
291	✉ 2c Black (73). Tied from Boston with corner card of Byam Carlton & Co. Matches , Fine	—
292	✉ 2c Black (73). Ten covers includes Star, grills, V. G.—Fine	—
293	5c Red Brown (75). Very Fine	(Photo) 17.50
294	5c Dark Red Brown (76). Tied on small piece with neat target cancel, V. F.	17.50

15c LINCOLN

295	★ 15c Black (77). Well centered, Very Fine	(Photo) 30.00
296	15c Black (77). Very Fine	(Photo) 9.00
297	15c Black (77). Very Fine	(Photo) 9.00
298	15c Black (77). Very Fine	(Photo) 9.00
299	15c Black (77). Very Fine	9.00
300	15c Black (77). Very Fine	9.00
301	15c Black (77). Very Fine	9.00
302	15c Black (77). Very Fine	9.00
303	15c Black (77). Very Fine	9.00
304	15c Black (77). Very Fine	9.00
305	15c Black (77). Very Fine	9.00
306	15c Black (77). Very Fine	9.00
307	15c Black (77). Very Fine	9.00
308	No lot.	
309	15c Black (77). Very Fine	9.00
310	15c Black (77). Very Fine	9.00
311	15c Black (77). Very Fine	9.00
312	15c Black (77). Very Fine	9.00

313	15c Black (77). Very Fine	9.00
314	15c Black (77). Very Fine	9.00
315	15c Black (77). Very Fine	9.00
316	15c Black (77). Cross Roads cancel, Very Fine	9.00
317	15c Black (77). Very Fine	9.00
318	15c Black (77). Very Fine	9.00
319	15c Black (77). Very Fine	9.00
320	15c Black (77). Very Fine	9.00
321	15c Black (77). Very Fine	9.00
322	15c Black (77). Very Fine	9.00
323	15c Black (77). Very Fine	9.00
324	15c Black (77). Very Fine	9.00
325	15c Black (77). Very Fine	9.00
326	15c Black (77). Red Boxed transit marking. Very Fine	9.00
327	15c Black (77). Very Fine	9.00
328	15c Black (77). Fine	9.00
329	15c Black (77). Two copies, Odd Cancels , one in blue, Fine	18.00
330	15c Black (77). Three copies ,well centered, tiny thins, V.F. appearance	27.00
331	15c Black (77). Three copies, well centered, light creases, V.F. appearance	27.00
332	15c Black (77). Three copies, well centered, slight creases, V.F. appearance	27.00
333	15c Black (77). Three copies, well centered, light creases, V.F. appearance	27.00
334	15c Black (77). Four copies, Fine-Very Fine	36.00
335	15c Black (77). Four copies, well centered, slight creases, V.F. appearance	36.00
336	☒ 15c Black (77). Well centered copy tied on cover to Germany, various transit markings, V.F.	15.00
337	24c Dark Lilac (78). Neat grid, Very Fine	6.50
338	☒ Illustrated Advertising Covers, 46 different, 1861-1914 Issues, Fine lot	—

1867 GRILL ISSUES

339	3c Rose, D. Grill (85). Very Fine	15.00
-----	--	-------

340	2c Black, Z Grill (85B). Bright red cancel, tiny hole in grill, Fine appearance	25.00
341	1c Blue Grill (86). Unusual deep color, Very Fine (Photo)	17.50
342	2c Black, Grill (87). Blue Star within geometric cancel, centered B. & L.	—
343	2c-12c Grills (87-90). Fine-Very Fine	22.00
344	10c, 12c, 15c Grills (89-91). Last two have light creases, Very Fine appearance	36.50
345	12c-15c Black Grills (90-91, 97-98). Well centered, all lightly creased, V.F. appearance	43.00
346	15c Black, Grill (91). Very Fine (Photo)	20.00
347	15c Black, Grill (91). Tiny corner crease, V.F. appearance	20.00
348	★ 1c Blue, Grill (92). Short perf. V.F. appearance	20.00
349	☒ 1c Blue, Grill (92). Tied on cover with large bright green pmk. Greenpoint, Ga., stamp centered to R. Scarce	—
350	☒ 1c Blue, Grill (92). Three copies on cover Ms. cancel in violet from Dawsonville, Va., V.G.	—
351	2c Black, Grill (93). Four copies, well centered, Very Fine	14.00
352	3c Red, Grill (94). Attractive strike of Diamond in Fancy Star, slight creases (Photo)	—
353	3c Red, Grill (94). Five copies, one str. edge, well centered, V.F.	—
354	3c Red Grill (94). 194 copies in book selected for cancel s, includes geometrics colored, stars, leafs, pumpkin head, some faults, nice strikes	—
355	☒ 3c Red Grill (94). Tied from Delaware ,O. on most attractive illustr. adv. cover of Grape Culturist, V.F.	—
356	☒ 3c Red Grill (94). Attractive strike of Phila. False Teeth on cover, Fine	—
357	10c Green Grills (96). Three copies, diff. Odd Grid cancels, Fine-V.F.	18.00
358	10c, 12c, 15c Grills (96-98). Very Fine	20.50
359	12c Black Grill (97). Red and Black cancels, Very Fine	8.00
360	12c-15c Black, Grills (97-98). Slight creases, Very Fine appearance	14.50
361	12c-15c Black, Grills (97-98). Well centered, tiny thins, V.F. appearance	14.50
362	15c Black Grill (98). Very Fine	7.50
363	15c Black, Grill (98). Very Fine	7.50
364	15c Black, Grill (98). Very Fine	7.50
365	15c Black, Grill (98). Very Fine	7.50
366	15c Black, Grill (98). Jumbo side margins, str edge R. small thin	—

367	15c Black, Grill (98). Odd Pointed cancel, Very Fine	—
368	15c Black Grill (98). Three copies, Fine-Very Fine	22.50
369	15c Black Grill (98). Three copies, light creases, well centered, V. F. appearance	22.50
370	15c Black, Grill (98). Three copies, light creases, well centered, V. F. appearance	22.50
371	30c Orange Grill (100). "Hiogo Japan" cancel, Fine	35.00
372	☒ 30c Orange, Grill (100). Str. edge copy tied on cover to France, Various transit markings, Fine	60.00
373	CIVIL WAR SCRAPBOOK, 557 diff. unused Patriotic Covers mostly fronts or pieces all pasted in book many rare designs including Kimmels also about 100 attractive Prints of the Civil War period includes Union Generals and Admirals, Lincoln, Cabinet Members, Lee, Battle Scenes interesting scrapbook in nice condition	—

1861 RE-ISSUES

374	★ 2c Black (103). Well centered one short perf. V. F. appearance, part O. G.	(Photo) 80.00
375	★ 5c Light Brown (105). Very Fine, mostly O. G.	(Photo) 80.00
376	★ 10c Green (106). Very Fine, part O. G.	(Photo) 80.00
377	★ 24c Deep Violet (109). Very Fine, part O. G.	(Photo) 120.00
378	★ 30c Brownish Orange (110). Centered to right, Fine, part O. G.	(Photo) 160.00
379	★ 90c Blue (111). Very Fine, part O. G.	(Photo) 185.00

1869 PICTORIALS

380	1c Buff (112). Very Fine	7.00
381	1c Buff (112). Horiz. Pair with black Target cancel. One stamp slight defects; Fine appearing	16.00
382	1c Buff, 1c Brown Orange (112, 112a). Both well centered, small thins, V. F. appearance	14.00
383	1c Buff (112). Four diff. interesting cancel s, Fine-V. F.	28.00
384	★ 1c-2c Pictorials (112-113). First has one short perf. both finely centered	18.50
385	★ 1c-12c Pictorials (112-117). Very Good-Fine	91.50
386	★ 2c Dark Brown (113). Very Fine O. G.	7.50
387	★田 2c Brown (113). Block, perfs. touch at B. Very Good, O. G.	42.50
388	2c Brown (113). Horiz. Pair, well centered, V. F.	—

389	2c Brown (113). Four copies, Shades Very Fine	9.00
390	2c Brown (113). Four copies, Shades, Very Fine	9.00
391	2c Brown (113). Five copies, Shades, Very Fine	11.25
392	2c Brown (113). Five copies, well centered, light creases, V. F. appearance	11.25
393	2c Brown (113). Six copies, Paid, Paid All, Red, Blue Revenue Handstamp, Negative "A", V. G.-V. F.	—
394	2c Brown (113). Seven copies, interesting Cancels includes Reds, Blues, geometrics, Very Fine lot	—
395	2c Brown, 12c Green (113, 117). Blue town on first, Brown cancel on latter, V. F.	12.50
396	★田 3c Ultramarine (114). Block of 6, perfs. cut in T. & R. O. G.	28.00
397	3c Ultramarine (114). Eight copies, two Red , six Blue cancels, Fine-V. F.	—
398	3c Ultramarine (114). Ten copies, well centered, V. F.	—
399	3c Ultramarine (114). Ten copies, well centered, Very Fine	—
400	3c Ultramarine (114). Ten copies, well centered, Very Fine	—
401	3c Ultramarine (114). Fifteen copies selected for Interesting Cancels , V. F.	—
402	✉ 3c Ultramarine (114). Four copies each tied with 8 petal cancel on cover to Prussia, V. G.	—
403	6c Ultramarine (115). Very Fine	8.50
404	6c Ultramarine (115). Very Fine	8.50
405	6c Deep Ultramarine (115). Very Fine (Photo)	8.50
406	6c Ultramarine (115). Very Fine	8.50
407	6c-10c Pictorials (115-116). Very Fine	17.00
408	6c ,15c Pictorials (115, 119). Fine	17.50
409	6c-15c Pictorials (115-117, 119). Well centered, small thins ,V. F. appearance	34.50
410	6c-15c Pictorials (115-117, 119). Small faults, V. F. appearing	34.50
411	6c-15c Pictorials (115-117, 119). Very Good	34.50
412	★ 10c Yellow (116). Fine	25.00
413	10c Yellow (116). Very Fine	8.50
414	10c Yellowish Orange (116). Very Fine	8.50
415	10c Yellowish Orange (116). Very Fine	8.50
416	10c Yellow (116). Square made of 4 smaller Squares cancel, V. F. (Photo)	—

417	10c Yellow (116). Red " Paid All New York Direct ", Fine	—
418	10c Yellow (116). Star cancel, Very Fine	8.50
419	10c Yellow (116). Two, Blue target, Red cancels, Fine-V. F.	19.50
420	10c Yellow (116). Two Shades, Very Fine	17.00
421	10c Yellow (116). Red Dot in Circle cancel, and Red target cancel, both have light creases, V. F. appearance	20.00
422	10c Yellow (116). Four copies, Fine	34.00
423	10c Yellow (116). Four diff odd cancels , Fine-Very Fine	34.00
424	10c Yellow (116). Tied on piece in combination with Great Britain 3p #49, Fine	—
425	10c, 12c, 15c Pictorials (116-17, 119). Light creases, V. F. appearance	26.00
426	12c Green (117). Very Fine	(Photo) 8.50
427	12c Green (117). Very Fine	8.50
428	12c Green (117). Very Fine	8.50
429	12c Green (117). Very Fine	8.50
430	12c Green (117). Red cancel, Very Fine	10.00
431	12c Green (117). Purple cancel, Very Fine	9.50
432	12c Green (117). Blue cancel, Very Fine	9.00
433	12c Green (117). Two shades, Very Fine	17.00
434	12c Green (117). Three diff. Red cancels, one has closed tear others V. F. attractive	30.00
435	12c Green (117). Five copies, Shades, Fine-Very Fine	42.50
436	12c-15c Pictorials (117, 119). Light corner creases, V. F. appearance	17.50
437	15c Brown & Blue (118). Very Fine	(Photo) 35.00
438	15c Brown & Blue Ty. I (118). Centered to right, Fine	35.00
439	15c Brown & Blue Ty. I (118). New Orleans pmk. centered to R. Fine	35.00
440	15c Brown & Blue (118). Fine	35.00
441	15c Brown & Blue, Ty. I (118). Light creases, V. F. appearance	35.00
442	15c Brown & Blue, Ty. I (118). Black rosette also red and blue transit markings, Fine	(Photo) 35.00
443	15c Brown & Blue, Ty. I (118). Well centered, faults, Fine appearance	35.00
444	15c Brown & Blue, Ty. I (118). Small thin, Fine appearance	35.00
445	15c Brown & Blue (118). Tiny thin, Fine appearance	32.50



68



69



75



76



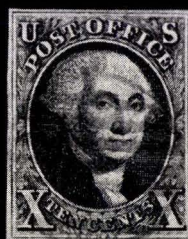
77



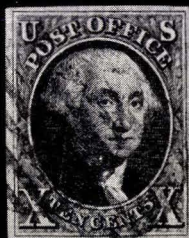
79



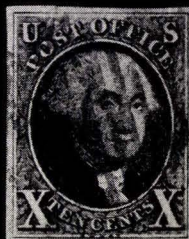
80



81



82



83



84



85



86



89



94



103



104



105



21



23



24



25



26



27



28



29



30



31



32



33



39



47



52



64



87



35



78



88



107



123



134



153



156



162



163



166



167



168



169



170



174



207



194



216



223



224



228



229



236



260



293



295



296



297



298



341



346



352



374



375



376



377



378



379





405



416



426



437



442



448



453



459



462



463



467



525



526



527



529



530



557



565



569



574



580



581



587



588



588



593



601



609



613



634



635



659



660



662



663



664



667



674



669



682



698



699



709



717



736



737



738



739



747



822

446	✉	15c Brown & Blue Ty. I (118). Three copies on cover to Paris, two tied with red "New York Paid 36", all have black cork cancel, various transit markings, one stamp has 3 short perfs. Fine and Scarce cover (Photo)	—
447	★	15c Brown & Blue (119). Perfs. touch at top, fresh	27.50
448		15c Brown & Blue (119). Very Fine (Photo)	9.00
449		15c Brown & Blue (119). Very Fine	9.00
450		15c Brown & Blue (119). Very Fine	9.00
451		15c Brown & Blue (119). Very Fine	9.00
452		15c Brown & Blue (119). Very Fine	9.00
453		15c Brown & Blue (119). Small Leaf cancel, V. F. (Photo)	—
454		15c Brown & Blue (119). Very Fine	9.00
455		15c Brown & Blue (119). Three unusual Ms. Paids and red transit marking, Fine	—
456		15c Brown & Blue (119). Fine	9.00
457		15c Brown & Blue (119). Three copies, one blue cancel, light creases, V. F. appearance	27.00
458		15c Brown & Blue (119). Three copies, Fine-Very Fine	27.00
459		24c Green & Violet (120). Tiny tear, V. F. appearance (Photo)	37.50
460		24c Green & Violet (120). Well centered, tiny thin, V. F. appearance	37.50
461		24c Green & Violet (120). Repaired, nice appearance	37.50
462		30c Blue & Carmine (121). Very Fine (Photo)	25.00
463		30c Blue & Carmine (121). Very Fine (Photo)	25.00
464		30c Blue & Carmine (121). Fine	25.00
465		30c Blue & Carmine (121). Red and Black cancels, Fine	25.00
466		30c Blue & Carmine (121). Fine	25.00
467		30c Blue & Carmine (121). Trivial corner crease, V. F. appearance (Photo)	25.00
468		30c Blue & Carmine (121). Small thin, V. F. appearance	25.00
469		30c Blue & Carmine (121). Slight creases, Fine appearance	25.00
470		30c Blue & Carmine (121). Tiny corner crease, V. F. appearance	25.00
471		30c Blue & Carmine (121). Tiny thinning, Fine appearance	25.00
472		90c Carmine & Black (122). Perfs. in at R.	92.50
473	★	1c Buff Re-Issue (123). Fine	15.00
474	★田	1c Buff Re-Issue (133). Block, reenforced part O. G. Fine	50.00

END OF FIRST SESSION

SECOND SESSION

THURSDAY, DECEMBER 17th, 1953 — 2 P. M.

RAILROAD COVERS

- 475 ☒ Northern R. R. "5" in blue circle, Fine —
- 476 ☒ Prov. & Wor. R. R. in blue circle, "5", (1850), Very Fine —
- 477 ☒ "RAILR." Red str. line "5" (1846), Fine —
- 478 ☒ 3c Red (11). Tied with clear "Atlantic & St. L. R. R." pmk. Fine —
- 479 ☒ 3c Red (11). Tied with Albany & Rutland R. R. pmk. Fine —
- 480 ☒ 3c Red (11). Tied with "New York & Phila. R. R." pmk. Fine —
- 481 ☒ 3c Red (11). Red grid not tied on cover with red "N. York & N. Haven R. R." pmk. V. G. —
- 482 ☒ 3c Red (11). Tied with blue "Eastern R. R. Ms.", Fine —
- 483 ☒ Railroad Corner Cards, 1857-61 issues, 6 diff. covers, Fine lot —
- 484 ☒ 3c Rose (65). Str. edge copy tied from Baltimore on adv. cover showing Railroad, V. F. —
- 485 ☒ 1c Blue (219). Tied on attractive illustr. adv. cover showing Railroad, V. F. —
- 486 ☒ Twentieth Century Limited, Famous Railroad Wreck in 1905 on partly burnt cover with P. O. Label concerning wreck —
- 487 ☒ Omaha, Ogden R. R., in 1937 was in Railroad Wreck, partly burnt cover with handstamp "Damaged by Fire ,Aug. 22, 1937" —

WESTERNS AND TERRITORIALS

- 488 ☒ Placerville, Cal. in black circle, "10", on turned cover from Belvidere, Ill. to Canada with fancy 10 and four transit markings, Fine —
- 489 ☒ San Diego, Cal. in black circle Ms "40" to Wash. D. C. (1850), Fine —
- 490 ☒ Stockton, Cal. 6 Paid and 10, two covers, V. F. —

- 491 ☒ **Union (Cal.)** in Ms. handstamp black Paid in oval (1852), to San Francisco, Fine
- 492 ☒ **3c Orange Brown (10)**. Tied with Ms. "**Choctaw Agency, Choctaw Nation, Dec. 13, 1851**", addressed to Gen. Royston, Washington, Arkansas, Fine, Scarce
- 493 ☒ **3c Orange Brown (10)**. Very Fine Corner Copy, Ms. cancel **Choctaw Agency** on cover, Scarce
- 494 ☒ **3c Orange Brown (10)**. Tied **Doakesville, Ark.** on cover, V.F.
- 495 ☒ **3c Orange Brown (10)**. Horiz. Pair tied on cover with **Portland, O. T.** pk. Fine
- 496 ☒ **3c Red (11)**. Vertical Pair tied with **Sonora, Cal.** double circle pmk. V.G.
- 497 ☒ **10c Green, Ty. II (14)**. Tied with blue grid of dashes, **Marysville, Cal.** pmk. Fine 20.00
- 498 ☒ **3c Rose (65)**. Tied on cover with **Bannock City, Montana** pmk. V.G.
- 499 ☒ **6c Ultramarine, 10c Green (68, 115)**. Tied on cover front with blue **Sonoma, Cal.** pmks. to France, attractive
- 500 ☒ **10c Green, 5c Brown (68, 76)**. Four of each, all on cover with San Francisco **Cog Wheel** cancels, to France, Fine
- 501 ☒ **3c Green**, two Territorials, **Stanwood, Wash. Terr. & Prescott, Ariz.** V.G.
- 502 ☒ **3c Green (207)**. Tied with clear **Forbestown, Butte Co. Cal.** pmk. and light strike of **Kicking Mule** cancel, scarce
- 503 ☒ **2c Red Brown (210)**. Two covers each tied with diff. type **Fort Washakie, Wyo.** pmks. Fine
- 504 ☒ **2c Red Brown, 4c Blue Green (210-211)**. Block of latter on legal size Registered cover tied with **Nogales, Arizona** pmks.
- 505 ☒ **2c Carmine, 8c Columbian** on **2c Red Entire (236, 267, U363)**, each with Port Townsend **Kicking Mule** cancel, two fairly clear strikes on registered cover
- 506 ☒ **4c Brown, 8c Columbian** on **2c Entire (236, 280, U365)**, on registered cover from Port Townsend with two light strikes **Kicking Mule** cancel
- 507 ☒ **P. O. Dept. Registered Package Receipt Card**, pmk. clear **Kicking Mule** with **Forbestown and Hurleton, Butte Co. Cal.** pmks, V.F. (Photo)
- 508 ☒ **2c Carmine (279B)**. Tied from San Francisco in 1900 on most attractive multi-colored cover commemorating **50th Anniversary of Statehood**, Very Fine (Photo)
- 509 ☒ **2c Orange Red (279B)**. Tied on pretty illustr. cover in colors of **Tournament of Roses** Jan. 1, 1902, from Pasadena, V.F.
- 510 ☒ **3c Red Entire (U10)**. Handstamp in oval "**J. Bamber & Co's Contra Costa Express, Paid**" also company adv. on pasteup on back V.F.

511	☒	3c Red Entire (U10) . Tied with Denver City Kas. pmk. also Ms. "Paid 10c", slightly frayed at top	—
512	☒	10c Green Entire (U16) . Tied with Cloverdale, Cal. pm., Ms. "Via Los Angeles Overland Mail" on cover, Fine	—
513		10c Green Entire (U16) . Bold clear Camp Simeahmoo, W. T. 1858 & fancy star pmks. on extensively repaired cover, rare territorial	—
514	☒	10c Green Entire (U16) . Clear Texas Hill, Cal. pmk. cover has small mended tear, Scarce town	—
515	☒	10c Green Entire (U18) . Tied by Marysville, Cal. pmk. on Langton's Pioneer Express Frank, Fine	—
516	☒	6c Pink Entire (U63) with fancy frank English & Wells Moore's Flat and Eureka Express, V.F. unused	—
517	☒	6c Purple Entire (U64) . With Wells Fargo Frank , tied with Co. oval to N. Y. with Boyd's Dispatch pmk. and Paid in circle, Fine	—
518	☒	2c Red Entire (U227) . Tied with White Oaks, New Mexico, 1884 pmk. V.F. Terr.	—
519	☒	2c Brown Entire (U277) . Tied from Sacramento on illustr. cover showing large Pig also illustr on back with running Whisky bottles, V.F.	—
520	☒	2c Green Entire (U311) . Scarce Frank Alaska Pacific Express Co. , tied from Portland, Oregon in 1898, slightly stained, Fine(Photo)	—
521	☒	2c Green Entire (U311) . Tied from Denver on envelope with frank of Denver & Rio Grande Express , Fine	—
522	☒	Pony Express 25c Red on 3c Pink Entire (143LU3) . Very Fine unused (Photo)	150.00
523	☒	Western Covers , Nineteen diff. includes Calif. stampless, Wells Fargo Franks, Black Hawk Point, Col. T. Bannock City, Mont. and other Territorials, many on legal size covers	—

BANK NOTE ISSUES

524	★	3c Yellow Green, Grill (136) . Very Fine, O. G.	12.00
525	★	3c Yellow Green, Grill (136) . Horiz. Pair, Very Fine O. G. (Photo)	25.00
526		10c Brown, Grill (139) . Very Fine (Photo)	37.50
527		10c Brown, Grill (139) . Very slight thin in two perfs., V.F. appearance (Photo)	37.50
528		10c Brown, Grill (139) . Perfs. in at R. light creases	37.50
529		15c Orange, Grill (141) . Light Red target cancel, V.F. (Photo)	45.00
530		90c Carmine, Split Grill (144) . Centered to top, Fine (Photo)	62.50
531		1c Banknotes , Eleven copies, includes interesting cancels ,mostly V.F.	—

532	1c-3c Banknotes , 78 stamps selected for Fancy Cancels includes Shield, N. Y. Foreign Mails, Odd geometrics, Stars, Crosses etc. Fine lot	—
533	1c-10c Banknotes , Eleven stamps all with Red cancels, attractive lot	—
534	1c-15c Banknotes , interesting lot of 59 stamps with various cancels	—
535	1c-3c Banknotes , 280 stamps including some cancels , Fine lot	48.80
536	2c Banknotes (146, 157, 178, 183) . Twenty-seven copies, includes interesting cancels, mostly Very Fine	—
537	2c, 6c, 10c Banknotes , Nine N. Y. Foreign Mail cancels, Fine lot	—
538	3c Green , Danbury Hat cancel, Very Fine	—
539	3c Green , Negative Danbury Hat cancel, different than above, Fine	—
540	3c Green , blue Chicago Gin Barrel cancel, centered to R. Fine	—
541	3c Greens , Four strips of 3 and a pair each with diff. N. Y. Foreign Mail cancels type 6, 22, 35, 51, 65, Fine lot	—
542	☒ 3c Green , str. edge copy tied with St. Louis Sunface cancel, Fine	—
543	☒ 3c Green , on illustr. cover in red and blue of Mt. Washington Summit House, N. H. , very attractive	—
543A	☒ 3c Green , tied on advert. cover from Phila. showing view of Centennial Exposition , Fine	—
544	☒ 3c Green . Tied on cover with Anchor cancel and Hope, Ind. pmk. Fine	—
545	☒ 3c Green . Tied from Hope, Ind. on illustr. Moravion Seminary cover, Fine	—
546	☒ 3c Greens , 12 covers all have interesting Postal Markings , Advertised, Unclaimed, Forwarded, Cannot Be Found, etc. Fine lot	—
547	3c Greens (136, 147, 158, 184) . Fifty-six copies, many interesting cancels includes Crossroads, Stars, N. Y. Foreign Mail, Leaf, Geometrics, Colored, Fine	—
548	★ 6c Carmine (148) . Tiny thin, V.F. appearance	13.50
549	6c Carmine (148) . Six N. Y. Foreign Mails , 4 types, Fine-V.F.	—
550	6c Carmine (148) . Ten select copies, shades, Very Fine	12.50
551	6c Carmine (148) . Fifteen copies, interesting cancels , V.F. lot	—
552	6c Banknotes (148, 159) . Five all with N. Y. Foreign Mail cancels, Fine-V.F.	—
553	☒ 6c Carmine (148) . Tied on cover with Heart cancel to London, various transit markings, Very Fine	(Photo)
554	☒ 6c Carmine (148) . Tied on cover with pretty strike N. Y. Foreign Mail ty. 4, various transit markings, Very Fine	—
555	☒ 6c Carmine (148) . Tied with clear strike N. Y. Foreign Mail , type 96NN on cover to England, Fine	—

556	6c-15c, 30c Banknotes (148-152, 154). Very Fine	28.75
557 ★	7c Vermilion (149). Very Fine (Photo)	20.00
558	7c Vermilion (149). Blue Shield in box, Fine	—
559	7c Vermilion (149). Two N. Y. Foreign Mails types 1, 28. V.F.	—
560	7c Banknotes (149, 160). Very Fine	10.50
561	7c Vermilion (149). Five copies, Fine-Very Fine	25.00
562	10c Brown (150). Six copies, includes shades, Very Fine	12.00
563	10c Brown (150). Nine copies, includes interesting cancels, Very Fine lot	18.00
564	12c Violet, 12c Blackish Violet (151, 162). Very Fine	7.75
565	24c Purple (153). New York Foreign Mail cancel, V.F. (Photo)	—
566	24c Purple (153). N. Y. Foreign Mail ty. 1 cancel, V.F.	—
567	24c Purple (153). Red N. Y. Foreign Mail, type 98, Fine	—
568	24c Bright Purple (153). Red cancel, Very Fine	12.00
569	24c Bright Purple (153). Very Fine (Photo)	10.00
570	24c Purple (153). Scarce N. Y. Foreign Mail type 59, Fine	—
571	24c Purple (153). Three shades, Fine-Very Fine	30.00
572	24c Purple (153). Four copies ,two have Red cancels, all well centered, minor faults, V.F. appearance	44.00
573	90c Carmine (155). Very Fine	14.00
574	90c Carmine (155). Bold strike of unusual design, small closed tear, V.F. appearance (Photo)	—
575	90c Dark Carmine (155). Fine	14.00
576 ★田	1c Ultramarine (156). Block, perfs. in at right	25.00
577 匣	1c Blue (156). Tied on most attractive adv .cover showing Railroad (Pacific Mail) and Clipper Ship (Alaska) (Photo)	—
578 ★田	3c Green (158). Block, Fine O.G.	15.00
579	3c Green (158). Horiz. Strip of 4 with clear strikes N. Y. Foreign Mail, ty. 35, centered to R.	—
580	6c Dull Pink (159). Clear strike Anchor & Stars N. Y. Foreign Mail ty. 91, V.F. (Photo)	—
581	6c Dull Pink (159). Pretty Purple Geometric (Photo)	—
482	6c Dull Pink (159). Nine diff. N. Y. Foreign Mail cancels, Very Fine lot	—
583	6c Banknotes (159, 186). Twenty-one copies, many interesting cancels including N. Y. Foreign Mails, Very Fine lot	—
584 匣	6c Dull Pink (159). Tied with pretty strike N. Y. Foreign Mail Ty. 43 on cover to London, small corner crease on stamp, Very attractive	—

585	6c-30c Banknotes (159-165). Two have N. Y. Foreign Mail cancels, 15c is ribbed paper variety, Very Fine	22.90
586	5c, 6c, 7c Banknotes. Six stamps with Fancy Cancels , Fine lot	—
587	7c Orange Vermilion (160). Bold N. Y. Foreign Mail, ty. 19, V.F. (Photo)	—
588	7c Orange Vermilion (160). Very Fine New York Foreign Mail type 13 (Photo)	—
589	7c Orange Vermilion (160). Very Fine N. Y. Foreign Mail, type 6 (Photo)	—
590	7c Orange Vermilion (160). Two shades, Very Fine	11.00
591	7c Orange Vermilion (160). Two shades, with N. Y. Foreign Mail cancels, V.F.	—
592	7c, 12c, 15c, 90c Banknotes (160, 162-63, 166). Slight faults, V.F. appearance	30.75
593	10c Brown (161). New York Foreign Mail, type 85, V.F. (Photo)	—
594	10c Brown (161). Twenty-three copies includes shades, interesting cancels, Very Fine lot	—
595	12c Blackish Violet (162). Two shades, Very Fine	8.50
596	☒ 12c Blackish Violet (162). Beautiful strike of N. Y. Foreign Mail, Ty. 10 tied on cover to Spain, V.F. (Photo)	—
597	☒ 12c Blackish Violet (162). Tied on cover with very fine strike of New York Foreign Mail ty. 43 in Red, to London, various transit marks, V.F. cover	—
598	12c Blackish Violet, 15c Yellow Orange (162-163). Very Fine	10.25
599	5c Blue Taylor (179). Twenty-four copies includes some interesting cancels, mostly Very Fine	—
600	☒ 5c Blue Taylor on Postal Service Entires (179, UO17). Strip of 3 on one, pair and strip tied on other, both large registered covers to Italy, Fine	—
601	2c Vermilion (183). Neat Skull & Crossbone cancel, V.F. (Photo)	—
602	★田 2c Vermilion, 3c Green (183-184). Blocks, Fine except latter has str. edge, O.G.	22.00
603	★田 3c Green (184). Block of 14, left four perfs. touch, other block of ten, Very Fine, O.G.	31.00
604	5c Blue Taylor (185). Twenty-five copies, mostly Very Fine	—
605	10c Brown (187-188). Eight copies, includes N. Y. Foreign Mail, Supplementary, V.F. lot	—
606	★田 15c Red Orange (189). Block ,perfs. partly separated, fresh O.G.	27.50
607	15c Banknote (189). Nine copies, includes shades, cancels, V.F. lot	—
608	30c Full Black (190). Five copies, includes shades, Very Fine	11.25

609	90c Carmine (191). Very Fine	(Photo)	15.00
610	★田 5c Brown (205). Block, Fine		30.00
611	1c-10c Banknotes, 1882-88 Issues, 226 stamps including some cancels, Fine lot		92.00
612	★田 1c Gray Blue ,3c Green (206-07). Blocks, Fine-V.F., O.G.		19.00
613	1c Banknote (206). Skull Head cancel, V.F.	(Photo)	—
614	1c Gray Blue (206). With Glen Allen, Va. Star Precancel, Fine		—
615	1c-10c Banknotes, Re-engraved (206-07, 209-10, 213-14, 216). Eighty-five stamps, many interesting cancels includes Geometrics, Initials, U .S., Monograms, Terr., Stars, Masonic		—
616	6c Rose (208). Five copies, Very Fine		17.50
617	★田 10c Brown, 10c Yellow Brown (209, a). Blocks, Fine O.G.		32.00
618	★田 1c-3c Banknotes (210, 212-214). Blocks, Fine O.G.		28.25
619	2c Green, 3c Green, each with diff. Skull & Crossbone cancel, V.G.-Fine		—
620	★田 4c Blue Green (211). Block, small thins, mostly O.G.		35.00
621	★田 4c Blue Green (211). Block of 8 with Plate No., str. edge at R. gum stains show only on back, centered to left		70.00
622	★田 1c Ultramarine (212). Block of 24, Very Fine		54.00
623	★田 3c Vermilion (214). Block of 6, mostly O.G., V.G.		17.00
624	★田 3c Vermilion (214). Three Blocks, two O.G., V.G.-Fine		36.00
625	☒ 3c Vermilion on 2c Green Entire (214, U311). Tied on cover from St. Louis to Italy in 1889 ,V.F.		15.00
626	☒ 3c Vermilion, two, 2c, 4c Carmine (214-15, 220). All tied on registered cover in 1891, red Pittsburgh oval cancel, Fine		—
627	★田 4c Carmine (215). Block, centered to R. Fine O.G.		20.00
628	★田 4c Carmine (215). Block, O.G., Very Good		20.00
629	★田 5c Indigo (216). Block, Fine O.G.		22.50
630	★田 30c Orange Brown (217). Block, Very Fine O.G.		52.50
631	30c Orange Brown (217). Two shades, Very Fine		11.00
632	30c Orange Bistre, 90c Purple (217-218). Tiny thins, V.F. appearance		20.60
633	★ 90c Purple (218). Several short perfs., clear but centered to right		35.00
634	90c Purple (218). Very Fine	(Photo)	15.00
635	90c Purple (218). Very Fine	(Photo)	15.00
636	90c Purple (218). Very Fine		15.00
637	90c Purple (218). Small thin, V.F. appearance		15.00

638	90c Purple (218). Tiny thin, V.F. appearance	15.00
639	90c Purple (218). Slight thin, Very Fine appearance	15.00
640	90c Purple (218). Slight crease, V.F. appearance	15.00
641	90c Purple (218). Two copies with small thins. Very Fine appearing	30.00
642	☒ Illustrated Advert. Covers, 1870-95 period, 10 diff. Attractive lot	—
643	☒ Advertising Corner Cards, 365 Covers ,all 19th Century, some illustrated, V. G.-V. F.	—
644	1c-2c 1890 Issue (219-220). Twenty-two Fancy Cancels includes Face, Triangle, Compass, Wreath etc. Very attractive lot with many scarce cancels	—
645	★田 1c-8c, 1890 Issue (219, 220-225). Blocks, Good-V.F.	63.50
646	★田 15c Indigo (227). Block, centered T. & R. Very Good	30.00
647	★田 .30c Black (228). Block, finely centered, slight perf. stains	40.00
648	90c Orange (229). Very Fine	8.75

COLUMBIAN ISSUE

649	★田 1c-2c Columbians (230-231). Blocks of 6, 12, 16 of first, Block of 4 of latter ,one block without gum, Fine-V.F.	26.45
650	★田 1c-8c Columbian (230-236). Blocks, Fine	64.75
651	★田 1c-8c Columbian (230-236). Blocks, Very Good	64.75
652	★田 2c Columbian (231). Imprint Plate No. Block of 10, Fine-V.F.	10.90
652A	2c Columbian (231). 270 diff. Fancy & Interesting Cancels plus 148 dupli- cate cancels. Nice lot	—
653	★田 3c Columbian (232). Block of 8. Fine	15.00
654	★田 3c Columbian (232). Block of 10 with Imprint, V.F.	18.00
655	★田 3c Columbian (232). Block of 12, perfs. partly separated, Fine	21.00
656	★ 3c-50c Columbians (232-233, 235, 237-240). 10c and 50c without gum, V. G.- V.F.	46.50
657	★田 10c Columbian (237). Block, centered to top, Very Good	30.00
657A	★田 15c Columbian (238). Block, Fine	40.00
658	15c, 30c, 50c Columbians (238-40). 30c unused without gum, two minute thinnings ,V.F. appearance	26.00
659	★ \$1.00 Columbian (241). Fine	(Photo) 45.00
660	★ \$1.00 Columbian (241). Slight hinge thin, Fine appearance	(Photo) 45.00
661	★ \$1.00 Columbian (241). Without gum, tiny corner thin, Fine appearance	45.00
662	★ \$1.00 Columbian (241). Without gum	(Photo) 45.00

663	\$1.00 Columbian (241). Fine (Photo)	37.50
664	\$2.00 Columbian (242). Centered to top. Fine (Photo)	35.00
665	\$2.00 Columbian (242). Well centered, a few slightly short perfs.	35.00
666	\$2.00 Columbian (242). Repaired. Very Fine appearing	35.00
667	\$5.00 Columbian (245). Perfs. barely touch at B., 1894 year date pmk. (Photo)	85.00

1894-1898 ISSUES

668	★田 1c, 5c, 8c 1894 Issue (246, 255, 257). Blocks, Fine-Very Fine	29.75
669	★ 5c Chocolate Imperforate (255b). Horiz. Pair, Very Fine (Photo)	35.00
670	★ 50c Orange (260). Very Fine	9.00
671	★田 50c Orange (260). Block, slight rubbing one stamp others V.F.	50.00
672	\$1.00 Black, Types I, II (261, 261A). First lightly creased, latter has perf. added	57.50
673	\$2.00 Dark Blue (262). Well centered, thin	50.00
674	\$5.00 Dark Green (263). Centered to B. slight thin spot (Photo)	95.00
675	★ 1c Blue Imperforate (264). Horiz. Pair, V.F.	12.00
676	★田 2c Carmine, Types II and III in Block (266-267). Very Fine	15.00
677	★田 2c Carmine, Types II and III in Block (266-267). Very Fine	15.00
678	★ \$1.00 Black (276). Reperfed at right	25.00
679	\$2.00 Dark Blue (277). Perfs. in at top, V.G.	35.00
680	\$2.00 Dark Blue (277). Well centered, creased	35.00
681	★ \$5.00 Dark Green (278). Faults, well centered	87.50
682	\$5.00 Dark Green (278). Fine (Photo)	32.50
683	✉ 4c Brown (280). Tied from New Orleans on illustr. cover showing Ship from Conference on Improvement of Channel at Mouth of Miss. River, V.F.	—
684	★田 6c Claret (282b). Block, Fine	16.00
685	★田 6c Claret (282b). Block, Fine	16.00
686	★田 10c Brown (282C). Block, Fine	42.50
687	★田 10c Orange Brown (283). Block, 2 short perfs., centered to B.	40.00

TRANS-MISS ISSUE

688	✉ 1c Trans-Miss. (285). Tied on Spanish-American War Patriotic , scarce design Eagle on Cannon, Fine	(Photo) —
-----	--	------------------

689	★	4c, 5c, 10c Trans-Miss. (287-288, 290). Fine-Very Fine	16.50
690	★	4c Trans-Miss., 10c Panama-Pacific (287, 400). Imprint Plate No. Pair of first, latter single V.G.-Fine	22.50
691	★	4c Trans-Miss (287). Block, well centered, 2 stamps have thins	25.00
692	★	5c Trans-Miss (288). Block, Very Fine	27.50
693	★	10c Trans-Miss. (290). Block, well centered, tiny black paper speck in one perf. still V.F.	47.50
694	★	10c Trans-Miss. (290). Block, Fine centering without gum	47.50
695	★	50c Trans-Miss. (291). Centered to left, Fine	35.00
696	★	50c Trans-Miss. (291). Reperfed at R. Fine appearance	35.00
697		50c Trans-Miss (291). Very Fine	10.00
698	★	\$1.00 Trans-Miss. (292). Fine	(Photo) 65.00
699	★	\$1.00 Trans-Miss. (292). Perfs. just touch at top. small thin (Photo)	65.00
700		\$2.00 Trans-Miss. (293). Fine	65.00
701	★	1c-10c, 1898-1912 Issues, 13 different, V.G.-V.F.	21.67

TWENTIETH CENTURY

702	★	1c, 4c Pan-American (294, 296). First Imprint Plate No. Block of 10, latter Arrow Pair, Fine-V.F.	14.50
703		1c-10c Pan-American (294-299). Set tied on piece of cover, early usage May 6, 1901, Fine	—
704	★	4c-10c Pan-American (296-299). 5c has thin, others Fine	20.75
705	✉	Advertising Corner Cards, 1901-20 Issues, many illustrated, 84 covers, F.-V.F.	—
706	★	50c Orange (310). Well centered, one corner perf. creased	17.50
707		50c, \$1.00, \$2.00, 1902 Issue (310-312). Fine-V.F.	28.75
708		\$2.00 Dark Blue (312). Two, one rather heavy cancel other V.G.	45.00
709	★	5c Blue Imperf. (315). Horiz. Pair, V.F.	(Photo) 150.00
710	★	1c-10c Louisiana Purchase (323-327). Perfs. touch on 1c and 2c, top three values Fine-Very Fine	31.50
711	★	3c, 10c Louisiana-Purchase (325, 327). Very Fine	20.00
712	★	10c Louisiana-Purchase (327). Bot. Imprint Plate No. Pair, V.F.	35.00
713	★	5c Jamestown (330). Fine	6.75
714	★	5c Jamestown (330). Slight gum stain, well centered	6.75

1908-1912 ISSUE

715	★田	1c, 3c, 4c, 5c, 8c 1908-09 Issue (331, 333-335, 337). Six blocks of 4 or 8, three have str. edges, V.G.-V.F.	57.30
716	★	50c Violet (341). Very Fine	15.00
717	★	\$1.00 Violet Brown (342). Very Fine (Photo)	25.00
718	★田	\$1.00 Violet Brown (342). Block, Fine	110.00
719	★	1c-5c Imperforates (343-347). Horiz. Pairs, V.F.	28.50
720	✉田	4c Brown Coil on 1c Entire (354). Strip of 3 on registered cover used 1912, Fine	24.00
721	田	2c Imperforate, 3c Kansas (384, 361). Very Fine used Blocks	14.50
722	★	2c Carmine Coil (388). Fine	35.00
723	★田	10c Panama-Pacific (400). Block, Fine	47.50
724	田	1c, 5c Panama-Pacific (401, 403). Two fine used Blocks.	14.00
725	★田	7c Black (407). Top Plate No. Block of 6, Fine	35.00
726	★田	1c Imperforate (408). Four diff. Arrow Blocks of 8 and Centerline Block of 16, V.F.	12.80
727	★田	9c Salmon Red (415). Bot. Plate No. Block of 9, Fine	23.50
728	★田	20c Ultramarine (419). Block, reperfed at R.	32.50

1914-1920 ISSUES

729	★田	8c Pale Olive Green (431). Imprint A Plate No. Block of 6, V.G.	20.00
730	★田	.12c Copper Red (435a). Block, V.F.	16.00
731	★田	12c Claret Brown (435). Str. Edge Block of 6. Partly Imperforate Between on four stamps	—
732	★田	15c Gray (437). Block, V.G.-Fine	32.50
733	★田	20c Ultramarine (438). Block, V.G.-Fine	35.00
734	田	50c, \$1.00 Used Blocks (440, 478). Blocks of 4 and 6 of first, Fine	26.00
735	★田	5c Blue (466). Block, Very Fine	12.00
736	★	50c Light Violet (477). Centered to top (Photo)	77.50
737	★	\$1.00 Violet Black (478). Fine (Photo)	60.00
738	★	\$1.00 Violet Black (478). Fine (Photo)	60.00
739	★	\$1.00 Violet Black (478). Fine (Photo)	60.00
740	田	\$5.00 Light Green (480). Block of 8, Very Fine	32.00
741	★田	1c-3c Imperforates (481-483). Left Plate No. Blocks of 6, V.F.	11.85

742	★	2c Carmine Coil, Ty. II (491a). Pair, Fine	60.00
743	★	5c Rose Error (499h), in strip of 3, perf. touch at B. without gum	35.00
744	✉	5c Blue (504). Tied with red oval "Mail Room, Dept. of State" on cover, Ms. "Pouch", V.F.	—
745	★	20c Deep Ultramarine (515a). Block of 9, V.F.	33.75
746	★	\$1.00 Violet Black (518a). Imprint Plate No. Strip of 3, V.F.	16.50+
747	★	\$2.00 Orange Red & Black (523). Fine (Photo)	50.00
748	✉	2c Offset Imperforate Type VII (532d). Tied on cover used in 1920, Very Fine, Scarce	65.00
749	★	3c Offset, 2c Harding Imperfs. (535, 611). Plate No. Blocks of 6, first has gum crease, latter V.F.	27.00
750	★	1c-3c Imperforates (535, 575-577). Blocks, Very Fine	14.85
751	★	3c Victory Issue (537). Three Plate No. Blocks of 4, one has hinge thin, others V.F.	14.25
752		3c Red-Violet, Victory (537a). Horiz. Pair, Fine	13.00
753	★	1c Green (545). Block, centered to B.	50.00
754	★	5c Pilgrim Tercentenary Issue (550). Top Plate No. Block of 6, centered to B. Fine	30.00

1922 ISSUE TO DATE

755	★	1/2c-30c, 1922 Issue (551-53, 555-56, 563-565, 568-69). Blocks includes 4 shades of 11c, Fine-V.F.	37.62
756	★	3c Violet (555). Bottom Plate No. Block of 6. Fine	12.00
757	★	50c Lilac (570). Left Plate No. Block of 6, V.F.	20.00
758	★	1c Imperforate (575). R. & L. Arrow Blocks, Very Fine	16.00
759	★	1 1/2c Imperforate (576). Centerline Block of 16, V.F.	14.00
760	★	1 1/2c Imperforate (576). Four diff. Arrow Blocks and Centerline Block, V.F.	21.00
761	★	1 1/2c Imperforate (576). Six blocks of 8 and a Centerline Block of 4, V.F.	24.20
762	★	2c Imperforate (577). Four diff. Plate No. Blocks of 6 one includes Star, diff. positions, V.F.	18.75
763	★	2c Carmine (595). Block, Very Fine	55.00
764	★	2c Harding Imperforate (611). Three Blocks of 4, two with Plate Nos. Fine-V.F.	22.50
765	★	2c Harding Imperf., 1c-5c Lex.-Concord (611, 617-619). Block, Fine-V.F.	21.10

766	★田	1c-5c Hug.-Walloon (614-616). Set of Blocks, Very Fine	19.25
767	★田	1c-5c Huguenot-Walloon Issue (614-616). Set of Blocks, Very Fine	19.25
768	★田	1c-5c Commemoratives (614-616, 618). Blocks, 5c has str. edge, Fine-V. F.	21.50
769		5c Hug.-Walloon, 5c Norse-Amer. (616, 621). Three Strips of 3, two of latter, Fine-V. F.	25.50
770	☒	1c-5c Lex.-Concord, 50c Zeppelin (617-619, C18). Two First Day Covers , V. F.	18.50
771	★田	5c Lexington Concord (619). Left Plate No. Block of 6, V. F.	15.00
772	★田	5c Lexington-Concord (619). Bot. Plate No. Block of 6, V. F.	15.00
773	★田	5c Lexington-Concord (619). Top Plate No. Block of 6, Fine	15.00
774	★田	5c Hawaii (648). Plate No. Block, Perfs. touch at R., One stamp thin	13.50
775	★田	6c Kansas (664). Block, Very Fine	14.00
776	★田	12c, 25c, 30c Rotary (693, 699-700). Two blocks of each ,V. F.	14.20
777		\$1.00 Presidential (832). New discovered ERROR clearly showing Watermark , V. F.	—
778	★田	1c-10c Famous-Americans (859-893). Set of Blocks, V. F.	44.25
779	★田	1c-10c Famous-Americans (859-893). Set of Plate No. Blocks, V. G.-V. F.	72.10
780	★田	10c Famous-Americans (863, 878, 888). Plate No. Blocks; Very Fine	19.50
781	★田	5c Flags (909-921). Set of Name Blocks, Very Fine	14.65

FANCY REGISTERED COVERS

782	☒	Registered Covers 3 diff. Fancy, Cats, P. O., Butterflies used 1930, V. F.	—
783	☒	Registered Covers, 5 diff. Fancy, Buffalo, Heart, Firecrackers, Moon, Wine glasses used 1931-34, V. F.	—
784	☒	Registered Covers, 5 diff. Fancy, Hands, Wings, Mexicans, large M, Stars ,used 1929-31, V. F.	—
785	☒	Registered Covers, 6 diff. Fancy, Clocks, U. S. A., Flags, Airplanes, Columbus, May Day used 1932-34, V. F.	—
786	☒	Registered Covers, 6 diff. Fancy, Airplanes, large 5, Chickens, Crosses, Stars, Geometric, 1928-34, V. F.	—
787	☒	Registered Covers, 6 diff. Fancy, Flags, Crossroads, Ape, Hatchets, Diamonds, H in Stars, used 1929-31, V. F.	—
788	☒	Registered Covers, 8 diff. Fancy, Stars, Pairs, Arrows, Boats, Bells, , Shamrocks, used 1928-31, Fine lot	—
789	☒	Fancy Cancels 1932-34 period, 26 diff. covers includes Antelope, B, Castle, Stars, T. Roosevelt, Bells, Washington, Ship, Horse, Buffalo, Duck etc. Attractive lot	—

AIR-MAIL ISSUES

790	★田 6c, 8c Airmails (C1, C4). Blocks, Fine	18.50
791	★田 6c, 8c Airmails (C1, C4). First Arrow Block, latter Block of 6, V. G.-Fine	22.20
792	★田 16c Airmail (C2). Block, Very Fine	32.50
793	★田 16c Airmail (C2). Plate No. Block of 4, Fine	32.50
794	★田 24c Airmail (C3). Top Plate No. Block of 4, V. F.	30.00
795	★田 24c Airmail (C3). Top Arrow Block of 4, Fine	27.50
796	★ 8c-24c Airmails (C3, C4-C6). Several small thinnings and 8c tear, nicely centered	19.35
797	★ 8c Dark Green, 50c Zeppelin (C4, C18). First Block, Fine	15.00
798	★田 16c Airmail (C5). Block, Very Fine	22.50
799	★田 16c Airmail (C5). Plate No. Block of 4, Very Fine	22.50
800	★田 16c Airmail (C5). Top Plate No. Block of 6, V. G.-Fine	42.50
801	★田 24c Airmail (C6). Block, Fine	32.50
802	★田 24c Airmail (C6). Plate No. Block of 4, Fine	32.50
803	★ 65c Graf Zeppelin (C13). Fine	22.50
804	★ 65c Graf Zeppelin (C13). Tiny thinning, Fine appearing	22.50
805	★ 65c Graf Zeppelin (C13). Well centered, two slight thins	20.00
806	★ \$1.30 Graf Zeppelin (C14). Light corner crease. Fine appearing	45.00
807	65c-\$2.60 Graf Zeppelin (C13-C15). Very Fine Set	108.50
808	★田 50c Zeppelin (C18). Block, Very Fine	37.50
809	★田 50c Zeppelin (C18). Bot. Plate No. Block of 6, Very Fine	67.50
810	★田 5c-50c Air Mails (Between C7-CE1). 14 Blocks of 4 to 12, mostly with Plate Nos. Fine-V. F.	47.70
811	★田 10c Special Delivery (E7). Block, part gum, Fine	15.00
812	★田 10c Registration (F1). Block, well centered, two light creases	16.00
813	✉ 2c, 4c, 6c, 40c Shanghai (K1-2, 6, 13). Tied on 3 Registered covers, with Shanghai pmks. First three are blocks, Fine	24.25

OFFICIALS

814	12c Agriculture (O6). Red Star, cancel. Very Fine	12.00+
815	✉ 3c Navy (O37). On cover, Wash. D. C. pmk. red corner card of Navy Dept. Fine	—
816	1c-90c Treasury (O72-O82). 6c corner crease, others F.-V. F.	15.25

817	3c Treasury (O74). Large blue Three Leaf Clover cancel, V. F.	—
818	✉ 3c Treasury (O74). Tied with "H. T. & Valley Br. R. R." pmk., U. S. Internal Rev. corner card, V. G.	—
819	✉ 2c War (O84). Tied with Holton, Ind. Postmaster cancel, Fine	—
820	Officials , 20 stamps with Fancy Cancels , attractive lot	—
821	★ 20c-25c, 75c Parcel Post (Q8-9, 11) . Very Fine	8.00
822	★ \$1.00 Parcel Post (Q12) . Very Fine	(Photo) 25.00
823	★田 Carrier, 1c Franklin (L03) . Block of 6, two thins, V. F. appearance	25.50
824	Carrier, 3c Blue, U. S. City Despatch Post (6LB5) . Margins all around, red U. S. in octagon cancel, V. F.	22.50

ENVELOPES

825	✉ 3c Red Entires (U1-U4, U6) . Fine-V. F.	11.35
826	✉ 3c Red Entire (U5) . Tied Pottsville, Pa. Very Fine	45.00
827	✉ 3c Red Entire (U8) . Repaired tear at top	20.00
828	6c Green on buff (U14) . Very Fine cut square	13.50
829	✉ 3c Entires 1853-86 Issues , 7 diff. Dead Letter Oval, Leaf, M, Katahdin Iron Works, Larissa, Tex. Steamboat, Chicago Supplementary Mail, Fine lot	—
830	✉ 7c Vermilion Entire (U88) . Tied with N. Y. Foreign Mail cancel to Germany, V. F.	(Photo) 25.00+
831	★ 1c Dark Blue on Amber (U109) . Fine	13.50
832	★ 1c Dark Blue on Cream (U110) . Very Fine	55.00
833	✉ 5c Brown Entire (U222) . Tied with "Ship" cancel, Yokohama, Japan pmk. V. F.	—
834	✉ 1c on 1c Red on Cream, Postal Card, ERROR (UX34) . Very Fine unused	25.00
835	✉ Same as above, Very Fine	25.00
836	✉ Same as above, Very Fine	25.00
837	★ Cut Square Envelopes , 46 diff. 19th Century, Fine-V. F.	25.39

REVENUES

838	1c Playing Card, Part Perf. (R2b) . Repaired	37.50
839	1c Proprietary Imperf. (R3a) . Cut in at B. large margins two sides showing tiny part of next stamp at top, Handstamp cancel	135.00
840	1c Telegraph Imperf. (R4a) . Touches at R. and one corner, V. G.	25.00

841	5c Certificate Imperf. (R24a). Horiz. strip of 3 large margins all around, V. F.	—
842	5c, 20c, 25c, \$1.00 Revenue Imperfs. (R25a, 42a, 45a, 48a-49a, 66a, 69a), all in Pairs, some faults	38.50
843	20c Foreign Exch. Imperf. (R41a). Vert. Pair, Fine.....	25.00
844	20c, 25c, 50c Imperf. Revenues (R42a, 49a, 54a, 59a). Pairs, Fine lot	29.00
845	25c Bond Imperf. (R43a). Vert. Pair, margins all around, V. F.	30.00
846	70c Foreign Exch. Imperf. (R65a). Red handstamp cancel, margins all around, pinhole, V. F. appearing	30.00
847	\$1.00 Imperf. Revenues (R69a, R75a). Horiz. Pairs, V. G.	21.00
848	\$5.00 Charter Party Imperf. (R88a). Very Fine	12.00
849	\$15.00 Mortgage, Ultramarine (R97c). Fine	22.50
850	\$20.00 Blue & Black (R129). Extra horiz. rows of freak perfs.	42.50
851	\$20.00 Orange & Black (R150). Fault, nice appearing	42.50
852	Revenues 1861-1898 Issues, 124 stamps all with interesting handstamp or printed cancels, Fine lot	—
853 ★	\$5.00 Green, Surcharge Omitted (R192a). Very Fine	25.00
854 ★	\$5.00 Green, Surcharge Omitted (R192a). Fine	25.00
855	\$500 Documentary, Series of 1948 (R508). Very Fine	15.00
856	\$500 Documentary, Series of 1948 (R508). Slight thin top. Very Fine appearing	15.00
857	\$500 Documentary, Series of 1948 (R509). Uncut. Retail for \$100.00. V. F.	—
858	\$500 Documentary Series of 1948 (R509). Uncut, Retail for \$100.00 V. F.	—
859	\$1000 Documentary, Series of 1948 (R510). Uncut, Very Fine	65.00
860	\$1000 Documentary, Series of 1948 (R510). Uncut, Very Fine	65.00
861	6c Proprietary Rouletted (RB17c). Diagonal crease	25.00
862	\$1,000.00 Stock Transfer (RD24). Slight marginal thin, V. F. appearance	35.00
863	\$30, \$50 Stock Transfer, Series of 1942 (RD134-RD135). Perforated initials, Handstamp cancels, V. F.	15.00
864	\$30, \$50 Stock Transfer, Series of 1942, 1946 (RD135, RD226). Perforated initials, V. F.	—
865	\$30-\$50 Stock Transfer, Series of 1944 (RD180-RD181). Perforated initials and Handstamp cancel, V. F.	16.00
866	\$30-\$50 Stock Transfer, Series of 1945 (RD203-RD204). Perforated initials, handstamp cancels V. F.	—

867	\$50 Stock Transfer, Series of 1945 (RD204). Uncut, Handstamp cancel, V. F.	10.00
868	\$50, \$100 Stock Transfer, Series of 1945 (RD204, RD206). Cut and Handstamp cancels, V. F.	23.50
869	\$100 Stock Transfer, Series of 1945 (RD206). Uncut Handstamp cancel. V. F.	20.00
870	\$30 Stock Transfer, Series of 1946 (RD226). Uncut. Handstamp cancel. V. F.	—
871	\$50 Stock Transfer, Series of 1946 (RD227). Uncut, Handstamp cancel. V. F.	—
872	\$60 Stock Transfer, Series of 1946 (RD228). Uncut, Handstamp cancel. V. F.	—
873	\$100 Stock Transfer, Series of 1946 (RD229). Uncut, Handstamp cancel. Very Fine	—
874	\$500 Stock Transfer, Series of 1946 (RD230). Uncut, Handstamp cancel. Very Fine	—
875	\$1000 Stock Transfer, Series of 1946 (RD231). Uncut, Handstamp cancel. V. F.	—
876	\$100 Stock Transfer, Series of 1947 (RD255). Uncut, Handstamp cancel, V. F.	—
877	\$1,000 Stock Transfer, Series of 1947 (RD257). Uncut, Handstamp cancel, V. F.	—
878	\$30 Stock Transfer, Series of 1948 (RD278). Two staple holes. Handstamp cancel. Very Fine	—
879	\$50 Stock Transfer, Series of 1948 (RD279). Two staple holes. Handstamp cancel. V. F.	—
880	\$100 Stock Transfer, Series of 1948 (RD281). Two small staple holes. V. F.	—
881	\$500 Stock Transfer, Series of 1948 (RD282). Several staple holes, Very Fine	—
882	\$1000 Stock Transfer, Series of 1948 (RD283). Two small staple holes. Handstamp cancel. V. F.	—
883	Portland Match Co. 1c Black (R0147). Five Wrappers, V. F.	50.00
884	MATCH & MEDICINES, 314 stamps mostly diff. mounted, many with faults as usual, Fair-Fine	617.00
885	Match & Medicine, 38 mainly diff. Est. Cash Val. \$10.00	—
886	Beer, Snuff, Cigar Revenues etc, several hundred stamps	—

887 ★	California State Revenues , 1857-61, 3¼c, 25c, 50c, 50c, 2.50 Insurance (Cabot #146, 149-50, 152) in uncanceled strips of 4 without control overprint, V. F.	—
888 ★	California State Revenues , 1857-61, 7½c, 25c, 50c, 10.00 Insurance (Cabot #154, 156-57, 161) in uncanceled strips of 4 blue paper without control overprint, V. F.	—
890 ★	10c-30c Philadelphia Sanitary Fair (WV-G1-G3) . Fine-Very Fine	—
891 ★	10c-30c Philadelphia Sanitary Fair (WV-G1-WV-G3) . O. G., Very Fine	—

CONFEDERATE STATES

892 ☒	Charlottesville, Va. Paid 5 in blue, V. F.	—
893 ☒	Natchez, Miss. Dec. 1, 1863 in double circle pmk. "Due 6" in oval, V. F.	—
894	Memphis, 2c Blue (56X1) . Small repair at B. and closed tear, Fine appearance	200.00
895	10c Rose (5) . Richmond July 4, 1862 pmk. margins all around, thin, V. F. appearance	35.00
896 ★☐	20c Green (13) . Block of 8, Very Fine	15.00
897	1c-20c, 1861-64 Issues, 59 stamps includes 2 covers and multiples, used and unused, Fair-Fine	140.00
898	1c-20c, 1861-64, 98 stamps, items of value in poor condition, used and unused	—
899 ☒	1c Blue Ty. V (24) . Tied with Charleston, S. C. May 4, 1861 pmk, Confederate usage , Fine	—
900 ☒	1c Blue, Ty. V (24) . Strip of 3, one damaged tied neat cover with Montgomery, Ala. March 31, 1861 pmk., Confederate usage	—

LARGE AND MISC. U. S. LOTS

901	U. S. Collection mainly 19th Century, 194 stamps includes 90c Banknotes, 1c-\$1.00 Columbians, 1c-50c Trans-Miss. etc. some faults, high cat. value, Est. Cash Val. \$65.00	—
902	United States Stockbook used and unused includes blocks, also defective \$2.00 Columbian, Est. Cash Val. \$50.00	—
903	2c-30c, 1861-1904 Issues , 25 stamps, mostly attractive with minor faults	102.25
904	1c-50c, 1898-1938 Issues , strong in Commems. many on cover, a number of used blocks, over 800 stamps in 2 albums, V. G.-V. F.	403.00
905 ★	Postage, Mostly 20th Century , 169 stamps wide variety, Good-Fine, Est. Cash Val. \$25.00	—
906 ☐	Used Blocks 20th Century , 435 blocks, includes duplication, V. G.-V. F.	—

907	Plate No. Singles and Blocks ,mostly used, about 600	—
908	PRECANCELS , fine lot of early issues mostly 1890-1922 Issues, strong in Illinois, Ohio, Wisconsin. Partly mounted, between 3,000-4,000 mostly diff. Interesting lot	—
909	PRECANCELS , box of about 5000, mostly 1922-29 period ,some earlier	—
909A	Precancels , about 4000 to 5000 stamps	—
910	☒ First Day Covers about 200 in ring binders, includes many blocks, Com-mems. and Airs, Fine lot	—
911	☒ Naval Covers , about 600 covers, mainly diff. Fine lot	—
912	Envelopes, Cut Squares and Entires , used and unused, large quantity	—
912A	★ Envelopes, Entires , mostly unused, mostly 19th Century, 122, nice variety, Fine-V. F.	—
912B	☒ Envelopes , mostly cut squares, many full corners, mainly unused, Fine-V. F. lot	—
913	REVENUES , 1862-71 Issues, mounted lot of 410 stamps, includes dupli-cation, some faults, Fair-Fine	798.00
914	Revenues , misc. lot, mostly 19th Century balance of collections, partly mounted, Est. Cash Val. \$25.00	—
915	Civil War Revenues , mainly 2c Orange, cigar box full, probably 5000 stamps	—
916	Locals , 187 stamps, wide variety, interesting lot of reprints etc.	—
917	Locals , 117 stamps, includes reprints, wide variety	—
918	Telegraphs , 161 stamps, some duplication, V.G.-V. F.	—
919	Telegrams , Collection of 321, wide variety of companies, mostly used in 1850-1865 period, Very interesting lot	—
920	Xmas Seals many hundreds includes sheets also some of early issues	—
920A	U. S. & Foreign , two collections in two albums, about 3000 stamps, Est. Cash Val. \$25.00	—
921	PORTO RICO , 1899-1900, Surcharges on U.S. 262 stamps, used and unused, all with str. edges otherwise sound	286.00

U. S. WHOLESALE

922	2c Black #73 (11), 93 (2), three unused of first ,V. G.-Fine	42.50
923	6c Dull Pink #159 (65), V. G.-V. F.	35.75
924	2c Red Brown #210 , all on small pieces of paper, weighs 1½ pounds, some defective	—
925	80c Air #C46 (35), V. F.	—

926	80c Airmail #C46 (100), some blocks, V. F.	—
927	80c Airmail #C46 (100), V. F.	—

U. S. POSSESSIONS

928 ★	CANAL ZONE, 1939 1c-50c Commemorative (120-135) Very Fine Set	31.25
929 ★	—5c-\$1.00 Airmails (C13-C18), Fine-V. F. Set	20.60
930 ★	GUAM, 3c Purple (3), Very Fine	7.00
931	—50c Orange (11), perfs. barely touch bottom, town cancel	11.00
932	—\$1.00 Black (12), Very Fine	17.50
933	HAWAII, 1865, 5c Blue (21), Large margins all around, V. F.	27.50

END OF SALE

Thank you

Christmas Greetings
and all Good Wishes
for the New Year

Robert A. Siegel

