

163rd SALE

*Gregory Mozoin
Purchased*

UNITED STATES
STAMPS & COVERS
and
BRITISH EMPIRE



At Public Auction

WEDNESDAY, MAY 27th — 2 P.M.

Robert A. Siegel
AUCTIONS

505 FIFTH AVENUE

NEW YORK CITY

CONDITIONS OF SALE

1. The terms of sale are strictly cash to the highest bidder. All buyers are expected to pay for lots within three days of receipt, unless special arrangements have been made prior to the sale.
2. All bids are per lot as numbered in the catalogue and not per piece, unless otherwise announced by the auctioneer at the time of sale.
3. Any lot the description of which is incorrect is returnable only within three days of receipt. All disputed lots must be returned intact as received. Lots containing five or more stamps are not returnable at any time. No lots may be returned by purchasers who have had the opportunity to examine them before the sale.
4. Successful mail bidders, unless they are known to us or supply acceptable references, will be notified of the amount of the lots secured for them, and are expected to send payment in full before the lots are forwarded.
5. If the purchase price has not been paid within the time limit, or lots taken up within seven days from date of sale, they may be resold and any losses arising from such sale charged to the defaulter.
6. All stamps are sold as genuine, except where sold "As Is". Claims for any lot proving otherwise, must be made within two weeks from date of sale.
7. The right is reserved to group two or more lots, also withdraw any lot or lots from the sale, or to act on behalf of the seller.
8. Until paid for in full all lots remain the property of Robert A. Siegel.
9. No commission is charged for buying at our sales, but all forwarding charges will be added to the purchase price.
10. Lots will be sent for inspection, provided such lots are returned to us the same day as received. Postage and registration both ways will be charged. Approximate values of lots will be given on request.
11. The placing of a bid shall constitute acceptance of the forgoing conditions of sale.

ROBERT A. SIEGEL

GREGORY MOZIAN, Licensed Auctioneers

In sending bids, always state the highest price you are prepared to pay for the lot. Your limit will not be used as a starting bid unless absolutely necessary.

DESCRIPTIONS

Superb—the finest condition for noteworthy, outstanding copies.

Very Fine (VF)—means that there is a slight deviation from the above.

Fine (F)—means that the perforations do not touch the design on issues after 1890, but in some cases may just touch in earlier issues; if used, fairly lightly cancelled.

Very Good (VG)—means that the appearance is generally fine but that the perforations cut the design slightly.

Good (G)—means average off-centering; or fairly attractive with slight defects. Original gum is not to be expected on 19th Century stamps up to 1888 unless so stated.

Scott's 1953 Specialized United States Catalogue is used for cataloging our lots of United States and Scott's Standard Catalogue, 1953 for others.

<p>WE SOLICIT FINE MATERIAL FOR FUTURE SALES</p>

UNITED STATES

STAMPLESS COVERS

- 501 **Kennebunkport, Me.** to Italy, various transit markings "Due 42", boxed Italian marking etc., also another cover with "**Boston Br. Pkt. 48**". V. F. _____
- 1A **Mass. Towns**, 22 diff. Fine lot _____
- 2 **Mineral Point, Wis. T.**, in red circle; and **Shullsburg, W. T.** in Ms. V. G. _____
- 3 **Mud Springs, Adams & Co.** (Calif.) in green oval, also Paid in oval. V. G. _____
- 4 **New Hampshire**, 12 diff. towns, includes invitation to Whig Rally for Scott & Graham, 1852. Fine-V. F. _____
- 4A **New York State**, 21 diff. including several fancy. Fine-V. F. _____
- 5 **Reading, Pa., Mobile, Ala.**, two stampless to Phila. with large blue "R" for registry. Good-Fine _____
- 6 **Saint Paul, Min. Ter.**, red circle, Paid 3. Fine _____
- 7 **Sherwoods Corners, N. Y.**, beautiful blue Stencil cover. Superb (Photo) _____
- 7A **Soldiers Letters of Civil War**, 12 covers, all in Mass. Regiments pmk. New Orleans, Balt. one Ship, nice lot *475 New Engl* _____
- 8 **Sonora, California, Dec. 25, 1851**, blue str. line, "Paid 6". Fine (Photo) _____
- 9 **Sonora, Cal.**, two stampless, both double circles, diff. type "Paid 6" markings _____
- 10 **Triangle, N. Y. Nov. 9** straight line in large **Triangle**, Paid 3. Fine. Scarce (Photo) _____
- 10A **Valparaiso, Ind.** and large X boxed, both in Green. V. F. _____
- 11 **Vermont**, 19 diff. towns includes Green, Year Date, Brown, Oval. Fine-V. F. _____
- 12 **Stampless**, 15 different to Europe with various transit marks, includes one turned cover. Nice lot _____
- 12A **Stampless**, 15 diff. odd and unusual markings. V. F. lot _____
- 12B **Stampless**, 22 covers mailed to U.S. ports mostly from Europe, various transit markings. Fine lot _____
- 13 **Stampless**, 40 covers mounted explaining complicated rates & markings, includes Way 6, Short Paid, Steam, Ship, Advertised, Steamboat, 84, 42, 21. Fine lot _____
- 14 **Stampless**, 149 covers, good variety includes Ship, Green, Way 6. Good-F. _____

N. Y. POSTMASTER PROVISIONALS

62	15	28 S. J.	5c New York Postmaster (9X1). Magenta pen cancel, Margins all around. Very Fine (Photo)	60.00+
11	16		5c New York Postmaster (9X1c). Without signature, Red Paid cancel, light crease. Fine appearance	85.00
185	17		5c New York Postmaster (9X1). Tied at corner with red "U. S. Express Mail, N. Y." pmk. on cover, also red Paid with Foundation Certificate, Rare unlisted usage. V. F. (Photo)	—

1847 ISSUE

26	18	23 S. J.	5c Red Brown (1). Blue Numeral 5 in oval, margins all around. V. F. (Photo)	45.00
20	19	18 S. J.	5c Brown (1). Sheet margin copy, red grid. Fine (Photo)	27.50
105	20		5c Red Brown (1). Red cancel, Margins all around, slight crease. V. F. appearance	27.50
125	21		5c Red Brown (1). Red town cancel, Margins all around, light crease. V. F. appearance	27.50
725	22		5c Red Brown (1). Ms. cancel and "Due 5" also Baltimore, Md. pmk. on cover. V. G.	—
33	23		10c Black (2). Blue grid cancel, margins all around, light crease (Photo)	80.00
281	24		10c Black (2). Red grid cancel, Margins three sides, close at B (Photo)	80.00
24	25		10c Black (2). Blue cancel. Stick Pin variety. Margins three sides, cut in slightly at B (Photo)	150.00
145	26		5c Brown Reproduction (3). Margins all around, tiny thin	37.50

1851 ISSUES

550	27	★	1c Blue, Ty. II (7). Fine	22.50
145	28		1c Blue, Ty. II (7). Five copies, mostly with light creases. Fine-V. F. appearance	50.00
375	29	☒	1c Blue, Ty. II (7). On two covers, one a Chicago Price Current. V. G.	30.00
9	30	★	1c Blue (7, 9). Fine	34.50
6	31	☒	1c Blue Ty. II, IV (7, 9). Four covers all tied. V. G.-Fine	57.00
70	32		1c Blue, Type III (8). Position #99R2, large margins three sides, in at B., light Ms. cancel. Rare (Photo)	600.00
550	33	★	1c Blue (9). Fine #48R1L	12.00
1750	34	★	1c Blue (9). Recut once at top & twice at bottom #20I1I V. F. (Photo)	25.00
650	35	★	1c Blue (9). Recut once at B. #7L1L. Fine (Photo)	50.00

36	★	1c Blue (9). Double Transfer one Inverted #71L1L. Fine. (Photo)	100.00
37	★	1c Blue (9). Vert. Pair #56, 66, L1L. Margins 3 sides, in at R	32.50
38		1c Blue, Ty. IV (9). Horiz. Pair, margins 3 sides, in at top	22.50
39		1c Blue (9). Horiz. Pair #9, 10L1L, barely touches two sides	37.50
40		1c Blue (9). L Shape Strip of 3, (90, 99, 100L1L). Fine	35.00
41		1c Blue (9). Four copies each with Red cancel, one has light crease. others Fine	40.00
42		1c Blue (9). Four copies #64, 65, 73, 100R1L. Fine	30.00
43		1c Blue (9). Six copies #8(44,45, 57, 69, 98L1L, mostly Fine	45.00
44		1c Blue (9). Six copies includes shades, red grid, carrier. V.G.-Fine	58.00
45	☒	1c Blue, 3c Red (9, 11). Strip of 3 of latter making 10c rate to Calif. neatly tied with N. Y. Clipper cancel. Very Fine (Photo)	—
46	☒	3c Orange Brown (10). Twenty-five covers, mostly tied, many Aug. to Oct. pmks. V.G.-V.F.	100.00
47	☒	3c Imperforates (10). Six covers (11) .Sixty-four covers. Fair-Fine	—
48		3c Red (11). On small piece with fancy Star cancel and Appleton, Wis. pmk. V.F.	—
49		3c Red (11). Neat Intertwining Star cancel. Fine (Photo)	—
50		3c Red (11). Pair and Strip of 3 each with U. S. Express Mail cancels. Fine	10.00
51		3c Red (11). Ten Horiz. Pairs, mostly Fine	25.00
52		3c Red (11). Thirty copies includes pair, shades. Fine-V.F.	—
53		3c Red (11). 498 copies, mostly with town cancels many dated, includes shades, few pairs, mostly Good-Fine	199.20+
54	☒	3c Red (11). Tied with Red Oval "Tyre, N. Y." on small cover, V.F. Scarce (Photo)	—
55	☒	3c Red (11). Paid cancel on cover with Triangle, N. Y. straight line in large Triangle pmk. Fine, Scarce (Photo)	—
56	☒	3c Red (11). Tied with Intertwining Star on cover, Chicopee, Mass. pmk. Fine	—
57	☒	3c Red (11). Tied on Fremont illustr. Campaign cover, attractive though stamp creased	—
58	☒	3c Red (11). Block tied on cover from Boston to Oregon Terr., also Ms. marking on block "Can't make the change" (10c rate). Fine (Photo)	—
59	☒	3c Red (11). Tied with Boston Paid and str. line "Missent and Forwarded" also Milwaukee pmk. Fine	—
60	☒	3c Red (11). Sheet Corner copy tied on cover with Franklin, N. Y. pmk. Fine	—

15	61	3c Red (11). Tied on small cover. Cracked Plate var. (74L). Fine	35.00
21	62	3c Red (11). Tied on small cover. Syracuse & Binghamton R. R. pmk. Scarce	—
12	63	3c Red (11). Pair tied with N. Y. & Erie R. R. pmk. on small cover	—
1750	64	3c Red (11). Pair on cover. Sonora, Cal. double circle pmk. Fine	—
275	65	3c Red (11). Tied on cover with Fort Riley, K. T. , balloon strike. Fine territorial	—
375	66	3c Red (11). Two covers tied from San Antonio, Texas. One black, other blue. Fine	—
550	67	3c Red (11). Three covers with diff. " Due 5 " markings clearly struck one fancy. Fine	—
125	68	3c Red (11). Three covers each tied with wide sheet margin copy. V. F.	—
225	69	3c Red (11). Three diff. Forwarded covers. Attractive lot	—
11	70	3c Red (11). Twelve covers all tied with four margin copies. V. F.	—
900	71	3c Red (11). Fourteen covers includes Way, Advertised, July 4, Dec. 25 pmks., Strip of 3, used with Bloods Local, San Antonio, Tex. pmks. Interesting lot. V. G.-V. F.	—
10	72	3c Red (11). Seventeen cover with Colored pmks. (blue, green, red) from diff. New England towns. Fine lot	—
10	73	3c Red (11). Twenty covers, all tied, one in Green. Fine-V. F.	—
11	74	3c Red (11). 27 covers with diff. N. Y. State town pmks. Good-Fine	—
13	75	3c Red (11). Forty-one covers all with diff. Mass. town pmks. Good-F.	—
22	76	3c Red (11). 54 Covers, includes margin copies, attractive town pmks and other markings some in color. Fine lot	—
2150	77	3c Red (11). 64 covers with diff. New England Town pmks. Good-V. F.	—
2250	78	3c Red (11). 87 covers, nice variety. Good-Fine	—
65	79	3c Red (11). 230 Covers includes few interesting cancels, corner cards. Fair-Fine	115.00
62.50	80	5c Red Brown (12). Margins all around. Very Fine <i>44.8</i> (Photo)	70.00
56	81	5c Dark Red Brown (12). Margins all around. Very Fine (Photo)	70.00
225	82	5c Red Brown (12). Tied on small piece with Boston "Paid" cancel, margins three sides, touches at R. Fine (Photo)	90.00
14	83	5c Red Brown (12). Red grid cancel, large margins two sides, in slightly B. & L. (Photo)	80.00
10	84	10c Green, Ty. I (13). Large margins three sides, cut in at R	65.00
8	85	★ 10c Green, Ty. II (14). Tiny corner crease, margins all around. V. F. appearance (Photo)	75.00
15	86	10c Green, Ty. II (14). Large margins. Very Fine (Photo)	16.00

87	10c Green, Ty. II (14). Red grid cancel, margins all around. V. F. (Photo)	17.00
88	10c Green, Ty. II (14). Black grid and blue N. A. transit cancel. Fine	16.00
89	10c Green, Ty. II (14). Red grid cancel. Fine	17.00
90	10c Green, Ty. II (14). Clear Paid cancel. Fine	17.50
91	10c Green, Ty. II (14). Horiz. Pair. New Orleans pmk. Fine-V. F. (Photo)	35.00
92	10c Green, Ty. II (14). Horiz. Pair. Blue town cancel, left stamp V. F. other has light corner crease	35.00
93	10c Green, Ty. II & III in Vertical Pair (14-15). Large margins all around, pen cancel	35.00
94	☒ 10c Green, Ty. II (14). Tied from Boston to San Francisco, Ms. "Nic-aragua Route". V. F. (Photo)	—
95	☒ 10c Green, Ty. II (14). Tied with Sonora, Cal. pmk. Fine	20.00
96	☒ 10c Green, Ty. II (14). Tied with clear Astoria, Ogn. pmk., one corner of cover ragged	20.00
97	☒ 10c Green (14). Creased copy tied on neat cover Fort Des Moines, Iowa to Canada with transit markings	—
98	10c Green, Ty. II, III (14-15). Fine	32.00
99	10c Green, Ty. II, III (14-15). Each has thin. Margins all around	32.00
100	10c Green, Ty. II, III (14-15). Each has light crease. Fine appearance	32.00
101	★ 10c Green, Ty. III (15). Margins all around, tiny marginal tear. V. F. appearance (Photo)	65.00
102	10c Green, Ty. III (15). Margins all around, pretty red grid. V. F. (Photo)	17.50
103	10c Green, Ty. III (15). Two .Fine-V. F.	32.00
104	12c Black (17). Red town cancel, margins 3 sides, in slightly at L.	25.00
105	12c Black (17). Margins all around, small thin	22.50
106	12c Black (17). Double Transfer. Fine	27.50
107	12c Black (17). Repaired, attractive appearance	22.50
108	12c Black (17). Horiz. Pair. Margins three sides, close at top. Fine (Photo)	60.00

1857 ISSUES

109	1c Blue, Type I (18). Lightly cancelled. Fine (Photo)	40.00
110	1c Blue, Type I and II in Vertical Pair (18, 20). Fine (Photo)	60.00
111	☒ 1c Blue, Type I (18). Strip of 3 with Ms. cancel on Patriotic cover, Gor-ham, Me. pmk. Fine (Photo)	135.00+
112	1c Blue, Ty. II (20). Red Carrier cancel, Cracked Plate (13L2), one short perf. Scarce	85.00

375	113	1c Blue, Ty. II (20). Two, one on cover, each has str. edge, tiny tear in one	27.50
14	114	1c Blue Ty. II (20). Strip of 3 with double transfer, Ms. cancel on cover. Fine	45.00
12	115	1c, 3c, 10c 1857 Issue, 1c Eagle Carrier, Boyd Local (20, 25, 35, LO2, 2OL7), on 5 covers, all tied but one. V.G.-V.F.	54.00
725	116	1c-15c, 1857-69 Issue (20, 68, 77, 116). V.G.-Fine	31.50
22	117	1c Blue, Ty. III (21). Cross pencancel not tied, maybe early Precancel, on cover, nicely centered, short perfs.	100.00
11	118	1c Blue, Ty. IIIa (22). Fine	20.00
3	119	1c Blue, Ty. IIIa (22). Bright red grid, thin. Fine appearing	20.00
10	120	1c Blue, Ty. IIIa (22). Pair and Single tied on cover, one stamp has few short perfs, others Fine	75.00
9	121	1c Blue, Ty. V (24). Ten copies includes shades, two pairs. Fine lot	32.00
375	121A	1c Blue Ty. V (24). Cancelled with blue transit marking and red boxed P.D. Fine	—
9	122	1c Blue Ty. V (24). Fourteen copies mostly with slight shifts and plate varieties. V.G.-V.F.	—
33	123	1c Blue, Ty. V (24). Forty-two copies includes strip, shades, Imprint and guide line copies, reds, blue, paid, etc. mostly Fine-V.F.	72.50+
6	124	1c, 5c-24c 1857 Issue (24, 30a, 35-37). On three covers latter on piece, all tied includes pair on 1c and 12c, all have faults	68.25
1550	125	3c Red, Ty. I (25). Twelve covers includes olive green, advertised. Fine lot	48.00
7	126	3c Red, Ty. I (25). 24 covers, some defective, fair lot	96.00
750	127	3c Red (25-26). Horiz. Pair of each with U. S. Express Mail cancels. Fine	75.00
6	128	3c Red (26), Three Fancy cancels, odd grids, segmented circle. Fine	—
250	129	3c Red (26). Four singles and pair with portions of N. Y. & Boston Steamboat R. R. cancels. Fine	—
1750	130	3c Red (26). Tied with blue grid, "Chicago Supplementary Mail" pmk. V. F. (Photo)	—
550	131	3c Red (26). Tied with Nashville, Ten. pmk. and Chicopee Intertwining Star cancel. Fine	—
2850	132	3c Red (26). On scarce Caricature Patriotic cover, Williamsburgh, N. Y. pmk. Fine	—
4	133	3c Red (26). Tied on hand colored Patriotic cover. Flag and Woman. V.G.	—
625	134	3c Red (26). Tied with Palermo, Kan. pmk. V. G.	—
475	135	3c Red (26). Ms. cancel, Marshfield, Va. pmk. on embossed Campaign cover front and back of Stephen Douglas. Fine	—

136	✘	3c Red (26). Not cancelled, with Held for Postage in red and Providence pmk. used with 3c Rose (65) tied, used Feb. 25, 1862, on cover front	—
137	✘	3c Red (26). Five covers includes Missent, "5" in Circle. Forwarded. Fine lot	—
138	✘	3c Red (26). Seven covers includes "Due 1 Cent", two diff. types and 5 diff. "Due 3" markings. Fine-V. F.	—
139	✘	3c Red (26). Eight diff. Hotel covers F.-V. F.	—
140	✘	3c Red (26). 14 covers with clear struck colored pmks. from diff. New England towns. Fine lot	—
141	✘	3c Red (26). 17 covers with diff. Vermont town pmks. V. G.-V. F.	—
142	✘	3c Red (26). 21 diff. Connecticut town pmks. on covers. Good-V. F.	—
143	✘	3c Red (26). 38 covers with diff. Mass. town pmks. Good-V. F.	—
144	✘	3c Red (26). 42 covers with diff. N. Y. and New England town pmks. Fine lot	—
145	✘	3c Red (26). 121 covers, wide variety, some faults. Good lot	—
146	✘	3c Red (26). Four Hundred & Fifty Covers. Fair-Fine	112.50
147		5c Brick Red (27). Centered to right	65.00
148		5c Red Brown (28). Nicely centered. Creased	35.00
149		5c Red Brown (28). Town cancel, centered to R	35.00
150		5c Red Brown, 5c Brown (28, 30a). Each thin, nice appearance	50.00
151	★	5c Brown, Ty. I (29). Slight crease. Fine appearance	(Photo) 55.00
152		5c Brown (29, 30a). First has few short perfs. Finely centered	33.50
153		5c Brown (30a). Fine	15.00
154	★	10c Green, Ty. II (32). Centered to left. Fine	(Photo) 62.50
155		10c Green, Ty. II (32). Three copies. Fine	36.00
156	★	10c Green, Ty. V (35). Three copies. Fine-Very Fine	27.00
157		10c Green (35). Neatly tied " Boston Br. Pkt. 55 on small piece. V. F.	—
158		10c Green, Ty. V (35). Two fine Imprint copies and a bright red town cancel, latter has short perfs	—
159		12c Black (36). Plate I and III. Fine	20.00
160		12c Black (36). Two Horiz. Pairs, from Plates I and III, slight faults, attractive appearance	50.00
161	✘	12c Black (36). Vertical Pair tied on cover to England. Fine	25.00
162	★	24c Lilac (37). Fine O. G.	22.50
163		24c Gray Lilac (37a). Red grid cancel, tiny marginal tear. Fine appearance	22.50

21	164	30c Orange (38). Fine	(Photo)	32.50
50	165 ★	90c Blue (39). Very Fine, O. G.	(Photo)	85.00
22	166 ★	1c Bright Blue, Reprint (40). Very Fine	(Photo)	27.50

1861 ISSUE

21	167 ★	3c Brown Red, August (56). Very Fine, O. G.	(Photo)	37.50
155	168	10c Dark Green, August (58). Red town cancel, centered bot. left		65.00
155	169	1c Blue (63). Attractive blue Leaf cancel. Fine	(Photo)	—
45	170 ☒	1c Blue (63). Three copies tied on small cover. Atlantic City, N. J. pmk. V. F.		—
16	171 ☒	1c Blue (63). 25 copies on 17 covers, nice lot. V. G.-V. F.		52.50
155	172	3c Rose (65). Forty-five copies, Fancy Cancels includes Steamboat, A, Triangle, large "T" in "V". Fair-Fine		—
475	173 ☒	3c Red (65). Tied with Waterbury, Conn. PUMPKIN .Fine. Scarce	(Photo)	—
4	174 ☒	3c Rose (65). Str. edge copy tied on cover with Cambridge CAT. V. G. Scarce		—
32	175 ☒	3c Rose (65). Tied with Orland, Ind. Seeing Eye, Masonic on cover. Fine		—
31	176 ☒	3c Rose (65). Tied with Orland, Ind. Seeing Eye, Masonic on cover. Fine		—
19	177 ☒	3c Rose (65). Tied with blue Cincinnati pmk on attractive blue illustr. R-R. Locomotive cover	(Photo)	—
13	178 ☒	3c Rose (65). Tied on Patriotic cover showing U. S. Capitol also letter-head showing same design. V. F.		—
52	179 ☒	3c Rose (65). Str. line Ship Island, Miss. pmk. on Patriotic cover, stamp has small tear		—
12	180 ☒	3c Rose (65). Patriotic cover tied from San Francisco, Cal., scarce usage. V. G.		—
42	181 ☒	3c Rose (65). Tied on illustr. Hotel cover, Hartford, Conn. pmk., contains Hope Express Co. notice illustr. early R. R. Very Fine		—
32	182 ☒	3c Rose (65). Two covers, Orland, Ind. Paid and fancy Star from Auburn, Ind. Fine		—
85	183 ☒	3c Rose (65). Four covers with clear markings Due 7, Steamship, Postage, Due 1, Steamboat, U. S.-D. L. O., stamps have faults, scarce		—
145	184 ☒	3c Rose (65). 21 covers each containing letter from a Civil War Soldier, one written on stationery with a picture of Battle of Pittsburg Landing. Interesting lot		—
14	185 ☒	3c Rose (65). 22 illustrated Covers several in color, includes Schools, Hotels, Patriotic, most have faults. Interesting lot		—
45	186 ☒	3c Rose (65). 26 covers diff. Conn. town pmks. Fine lot		—

✓ 187	✉	3c Rose (65). 28 covers with diff. Maine & New Hamp. towns. Fine lot	—
✓ 188	✉	3c Rose (65). Thirty covers with diff. Penna. town pmks. includes Leaf, Oil towns, corner cards. V. G.-V. F.	—
✓ 189	✉	3c Rose (65). 31 covers with diff. Vermont town pmks. V. G.-V. F.	—
✓ 190	✉	3c Rose (65), and covers of this period includes 20 "Soldiers Letters" also markings Advertised, Forwarded, Held for Postage, Not Found, Due 1, 3, 6 & 12 etc, total 55 covers. Interesting lot, mounted	—
✓ 191	✉	3c Rose (65). 64 covers with diff. N. Y. State pmks. Fine lot	—
✓ 192	✉	3c Rose (65). 69 covers all with diff. Middle Western State pmks. Fine lot	—
✓ 193	✉	3c Rose (65). Seventy covers with diff. Mass. pmks. Fine lot	—
✓ 194	✉	3c Rose (65). 101 covers includes corner cards, quite a few Brattleboro, Vt. cancels etc. Fair-Fine	—
✓ 195		5c Buff (67). Fine	40.00
✓ 196	✉	10c Green (68). Ms. cancel on cover from Nagasaki, purple oval " China & Japan Steam Service ". Fine	—
✓ 197		12c-90c, 1861 Issue (69-72). V. G.-Fine	45.50
✓ 198	✉	24c Brown Lilac (70a). Very Fine copy tied on fair cover	30.00
✓ 199		24c Steel Blue (70b). Very Fine	(Photo) 35.00
✓ 200		90c Blue (72). Very light cancel. Superb	(Photo) 20.00
✓ 201		90c Blue (72). Odd fancy cancel. Very Fine	(Photo) 20.00+
✓ 202		2c Black (73). Three shades, well centered. Very Fine	—
✓ 203	★	2c Black (73SB). Block with red Specimen overprint, perfs. in at B. & R. O. G.	40.00
✓ 204		2c Black (73). Two with Ms. revenue cancel on Certificate of Marriage. Interesting	—
✓ 205	✉	2c Black (73). 27 covers, some grills, pairs, Carrier. Good-Fine	—
✓ 206		5c Red Brown (75). Stitch Watermark . Fine	17.50+
✓ 207		5c, 15c, 24c, 1863-66 Issue (76-78). Fine	20.25
✓ 208		15c Black (77). Red town cancel. Fine	—
✓ 209	✉	2c Red Brown, 15c Black (77, 210 pair). Tied from South Poland, Maine on attractive large illustrated cover showing three scenes of Poland Spring House to France, unusual	—
✓ 210		24c Lilac, Gray Lilac (78, 78a) Fine	13.00
✓ 211	✉	24c Gray Lilac (78a). Vert. Pair tied on cover to Paris. Fine	17.50

1867 GRILL ISSUE

3750	212	3c Rose, Grilled All Over (79). Blue cancel. Fine	(Photo)	85.00
750	213	1c-12c Grills (86-90). Very Good		39.50
6	214	2c Black, Grill (93). Four each Red and Blue cancels. V. G.		34.00
36	215	3c Red Grill (94). Tied with ED from Clarksburg, W. Va. Very Fine	(Photo)	—
1050	216	3c Red Grill (94). Three diff. Waterbury, Conn. cancels Large "W", Diamond Grid, Rosette, clear strikes	(Photo)	—
42	217	5c Brown, Grill (95). Blue grid cancel. Very Good		37.50
3	218	10c Green, Grill (96). Pair & single tied on small cover to Italy, various transit markings. V. G.		22.50
650	219	12c Black, 30c Orange Grill (97, 100). V. G.-Fine		32.00
950	220	15c Black, Grill (98). Blue transit cancel. Very Fine	(Photo)	—
42	221	15c Black, Grill (98). Tied on cover to Italy, transit marks. V. G.		12.50
77	222	24c Gray Lilac, Grill (99). Very Good		50.00
1750	223	90c Blue, Grill (101). Centered to left. Fine		82.50

1869 PICTORIAL ISSUE

28	224	1c-30c Pictorials (112-121). Very Good-Fine		139.05
350	225	1c, 6c, 12c Pictorials (112, 115, 117). Partly tied on cover to Italy from Baltimore, various transit marks, partly stained. V. G.		—
8	226	2c Brown, two, 15c Brown & Blue (113, 119). All on cover to Italy, from Baltimore, various transit markings, one of 2c defective, still attractive		74.50
3	227	3c Ultramarine (114). Six diff. Fancy Cancels includes Leaf, Green, Red, Star, Paid. Fine		—
52	228	3c Ultramarine (114). Five covers with clear colored town pmks. Fine		—
2350	229	3c Ultramarine (114). 26 covers with Corner Cards some nicely illustrated. Good-Fine		—
1550	230	3c Ultramarine (114). 38 covers includes some nice cancels and postal markings. V. G.-V. F.		—
122	231	3c Ultramarine (114). 48 covers with diff. New England town pmks. Good-V. F.		—
10	232	3c Ultramarine (114). 91 covers. Fair-Fine		—
10	233	15c Brown & Blue, Ty. I (118). Fine	(Photo)	32.50
1750	234	30c Blue & Carmine (121). Bright. Very Fine	(Photo)	25.00
4250	235	90c Carmine & Black (122). Well centered, small thin. V. F. appearance	(Photo)	92.50



7

PAID 3

10

PAID 3



PAID



45

Edwin C. Brown
100 Broadway
New York

John Ross Esq
Care of Mrs. Clark, Broadway Co

17

55



54

Nicaragua Route

94



111

Mrs. Mary C. Stacey

Mr. Wm. R. Post

58



The Result of Secession.

News Charles A. Bardsley
New London

132

130



173



177



215

B. S. Keeney Esq
46 W. Market St. P. O.

William M. McCallister
Washington of Virginia

216



New York
March 6 1861



368



249



267



274

375

L. LUNDS & CO., SACRAMENTO, CAL.

J. H. Babcock
Delight



370



Book of the Co
No 3200
Boston
Mass

275



376

M. S. C. Bogue
John W. ...
Capt. J. ...



378

These ...
No. 5 ...
New York





15



18



19



23



24



25



32



34



35



36



49



80



81



82



83



85



86



87



91



101



102



108



109



110



151



154



164



165



166



167



169



199



200



201



212



220



233



234



235



265



278



281



282



284



287



292



293



294



EX 298



295



296



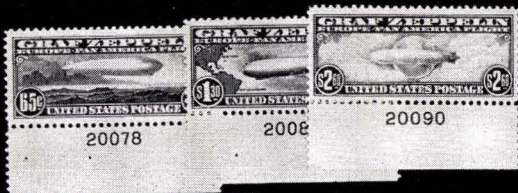
322

EX 299



333

338



348



349



442



451



452



461



462



465



467



468



469



471



477



484



502



503



513



514



535



536



543



545



546



549



551



553



557



558



573

BANKNOTE ISSUES

35	236	✉	6c Carmine, Grill (137). Tied on cover from Cambridge to England. V. G.	25.00
175	237		10c Brown, Grill (139). Well centered, one short perf. V. F. appearance	37.50
135	238	✉	15c Orange, Grill (141). Tied with red grid on small cover to Italy from Baltimore. V. G.	60.00
205	239		30c Black, Grill (143). Light grill, signed J. M. Bartels. V. G.	77.50
115	240		90c Carmine, Grill (144). Very Good	52.50
115	241		1c Banknotes, 26 Fancy Cancels includes Glen Allen Precancel Star, Leaf, "P. O. B. Free" in circle. Attractive lot	—
212	242		1c-10c Banknotes. Five diff. Stitch Watermarks . Fine-V. F.	—
35	243	✉	2c Red Brown, 12c Violet (146, 151). Cancelled in red on small mourning cover from Baltimore to Italy. V. G.	25.25
25	244	✉	2c Banknotes (146, 183). Each tied with Feb. 14 pmks. on embossed Valentine covers. Fine	—
325	245		3c Green, bold "7" in Shield cancel. Very Fine	—
95	246		3c Greens. 200 copies selected for shades and cancellations. V. F. lot	—
750	247	✉	3c Green. Tied with large EAH from Richfield Springs, N. Y. Very Fine (Photo)	—
250	248	✉	3c Green. Cancelled on cover with Skull & Crossbones and Shield from West Gardner, Mass. V. G.	—
175	249	✉	3c Green. Tied on cover with large Green Shield . Fine. Rare (Photo)	—
750	250	✉	3c Green. Tied with purple star on cover with " Fort Assinaboine, M. T. " pmk. Fine	—
212	251	✉	3c Green. 18 Illustrated Covers attractive lot. Fine-V. F.	—
75	252	✉	3c Greens. 24 diff. Hotel covers. Good-Fine	—
325	253	✉	3c Green. 41 diff. Western Covers includes 14 Calif., 7 Colo. Hotels, 5 Territories, 3 R. P. O. a few fancy. Nice lot	—
125	254	✉	3c Greens. 48 covers with diff. Hotel corner cards. Fine lot	—
125	255	✉	3c Greens. 50 covers selected for attractive & interesting Postmarks, etc. Fine-V. F.	—
35	256	✉	3c Green, 7c Vermilion (147, 149). Tied on cover from New Orleans to Paris, transit markings. Fine	32.50
625	257	✉	6c Carmine (148). Tied from Ann Arbor entire back of cover shows illus. of University of Michigan . Attractive	—
125	258		7c Vermilion (149). Eight Fancy Cancels . Fine-V. F.	40.00
75	259	✉	7c Vermilion (149). Cancel not tying, on cover to Germany with scarce "New York Via England & Ostend" marking in circle, str. line "Insufficiently Prepaid", attractive cover. Fine	32.50

260		7c, 12c, 15c, 90c Banknotes (149, 151-52, 155). Fine-Very Fine	28.00
261	✉	10c Banknotes (150, 161). Two covers to Italy both tied with N. Y. Foreign Mail cancels, types 28, 95. Fine	—
262	✉	12c Violet (151). Tied on cover from Baltimore to Rome, red transit markings. V. G.	25.00
263	✉	15c Banknote (152, 162). Two covers to Cape of Good Hope, one bit ragged also with 3c and 10c Banknote, various transit markings	28.50
264	★	3c Green (158). Block. Fine, O. G.	15.00
265		6c Dull Pink (159). Rare Elephant cancel. Very Fine (Photo)	—
266		7c Orange Vermilion (160). Eight diff. Fancy cancels. Fine-V. F.	42.50
267	✉	2c Vermilion (178). Tied on printed circular to Italy with New York Foreign Mail ty. 87. Very Fine <i>H. A. C.</i> (Photo)	—
268	★	5c Blue (179). Very Fine, O. G. <i>2772</i>	8.00
269		2c Vermilion (183). Attractive strike of Blue "U. S." in oval, centered to L.	—
270	✉	1c Blue, 2c Vermilion (183, 206), on Woman's Suffrage cover from Phila. Fine <i>H. A. C.</i>	—
271	★	6c Pink (186). Well centered, mint. Very Fine	20.00
272	★	6c Pink (186). Well centered, light crease, mint	20.00
273		90c Carmine (191). Fine	15.00
274	✉	2c Red Brown (210). Tied with pretty Fancy cancel "Haughton, Iowa, John Schriever, P. M." pmk. V. F. (Photo)	—
275	✉	2c Red Brown (210). Str. edge copy tied with U. S. Mail cancel, "Carlisle, Sullivan Co. C. A. Snapp, P. M. Indiana" pmk. V. F. (Photo)	—
276	★	1c-8c, 1881-1932 Issues, 66 stamps in blocks and strips, mostly Imperfis V. G.-V. F.	41.61

1890-1898 ISSUES

277	★	1c-90c, 1890 Issue (219-229). V. G.-Fine set	49.35
278	★	50c Columbian (240). Superb (Photo)	16.00
279	★	\$2.00 Columbian (242). Faults	47.50
280	★	1c-50c, 1894 Issue (246-260). V. G.-V. F.	47.85
281	★	\$1.00 Black (261). Stitch Watermark. Fine (Photo)	45.00+
282	★	\$1.00 Black, Type II (261A). Fine (Photo)	65.00
283	★	\$2.00 Bright Blue (262). Block, thin spot, without gum, centered to top. Fair	700.00
284	★	\$5.00 Dark Green (263). Well centered, thin spot. V. F. appearance (Photo)	122.50

3	285	1c Blue (264). Neat Pumpkin Head cancel. V. F.	—
11	286 ★	6c Dull Brown, 10c Green (271, 273) Imprint Plate No. Strips of 3. V. F.	22.50
35	287 ★	\$1.00 Black, Type II (276A). Very Fine (Photo)	70.00
950	288 ★	4c-15c, 1898 Issue (280-284). Includes four extra shades. V. G.-V. F.	46.70
5	289 ★	10c Orange Brown, 15c Olive Green (283-284). Fine	14.50
	290 ★	1c-10c Trans-Miss. (285-290). Set of top Imprint & Plate No. Pairs , 4c has thin, tropical gum. V. G.-V. F.	—
	291 ★	10c Trans.-Miss. 10c Louisiana-Purch. (290, 327). Each well centered with str. edge	23.00
	292 ★	50c Trans-Miss. (291). Top Imprint Plate No. Pair . Very fine (Photo)	100.00
	293 ★	\$1.00 Trans.-Miss. (292). Very Fine (Photo)	65.00
	294 ★	\$1.00 Trans.-Miss. (292). Well centered, slight offset of another stamp on back (Photo)	65.00
	295 ★	\$1.00 Trans.-Miss. (292). Top Imprint Plate No. Pair, tropical gum. Fine (Photo)	175.00
	296 ★	\$2.00 Trans.-Miss. (293). Top Imprint Plate No. Pair , centered to top tropical gum. Scarce	300.00
	297	Stitch Watermarks . Collection of twenty diff. both 19th & 20th. V. G.-V. F.	—

PAN AMERICAN ISSUE

7750	298 P	1c-10c Pan-American (294P-299P). Set of small Die Proofs . V. F. (Photo)	90.00
8250	299 P	1c-10c Pan-American (294P-299P). Set of large Die Proofs . V. F. (Photo)	135.00
51	300 ★	1c-10c Pan-American (294S-299S). Set overprinted Specimen , 8c has str. edge, 2c defective, balance Fine	75.00
10	301 ★	1c-10c Pan-American (294-299). Few slight thins. V. F. appearance	21.75
23	302 ★	1c-10c Pan-American (294-299). Set of Vert. Pairs. Fine	43.50
850	303	1c-10c Pan-American (294-299). Set of used Vert. Pairs. F.-V. F.	19.92
65	304	1c-10c Pan-American (294-299). Specialized collection of 15 Complete Sets all used with interesting cancels, red, magenta, blue, numerals, grids, letters, ovals, towns, bars etc. Interesting lot. Fine-Very Fine	149.40+
275	305	1c-8c Pan-American (294-298). Each has Stitch Watermark . Fine	—
6	306 田	4c Pan-American (296). Used Block with large purple octagon canc. Fine	12.00
11	307 ★	4c Pan-American (296). Top Imprint Strip of 5 with Plate No. and Arrow. V. F.	25.00
650	308 田	5c Pan-American (297). Used Block. Fine	13.50
25	309 田	8c Pan-American (298). Used Block. Very Fine <i>1500 + 200</i>	25.00

310	★	田	8c Pan-American (298). Block of 6. Fine	35.00
311	田		10c Pan-American (299). Used Block. Very Fine	18.00
312	★	田	10c Pan-American (299). Corner Block. Just touches at B	35.00
313			1c-10c Pan-American (294-299). Balance of specialized collection, includes used Blocks, plate no. strips, guide lines, multiples, cancellations, pre-cancels, collateral material, 123 stamps. F-VF	91.00+
314	田	田	1c-10c Pan-American (294-299). Set on 6 covers, top four are registered, all used 1901. V. F.	34.60
315	田		1c-10c Pan-American (294-299). Twenty-five covers includes registered, special delivery many with combinations. Fine lot	108.00
316	田		Pan-American Exposition Illustrated Covers, 16 different mostly multi-colored, all but one used from Buffalo, N. Y. Scarce and most attractive lot	—

1902-1910 ISSUES

317	★		2c-15c, 1902-03 Issue (301-309). Bottom Plate No. Pairs of each with part of Imprint. Very Fine	41.80
318	田		4c Brown, 6c Claret (303, 305). Tied on registered cover from Shanghai, Chinese Railway imprint. V. F.	—
319	★	田	1c, 2c Imperforates (314, 320). Blocks. Very Fine	17.00
320	★		1c-5c Louisiana-Purchase (323-326). Bottom Imprint Plate No. Pairs. Fine-V. F.	36.00
321	★		10c Louisiana-Purchase (327). Very Fine mint	15.00
322	★		10c Louisiana-Purchase (327). Bot. Imprint Plate No. Pair. Very Fine (Photo)	35.00
323	★		5c Jamestown (330). Very Fine	6.75
324	★		5c Jamestown (330). Bot. Strip of 3 with Imprint Plate No., small thin one stamp, just touches at B	20.25
325	★	田	1c-5c Imperforates (343-347). Set of Blocks, slight hinge thins. V. F. appearance	65.75
326	★		4c Orange Brown, Coil (350). Pair. Very Fine	14.00
327	★		5c Blue Coil (351). Pair. Very Fine	25.00
328	★		4c Orange Brown, Coil (354). Pair, Fine	15.00
329	★		10c Yellow Coil (356). Guide Line Pair. Fine	(Photo) 200.00
330	★		2c Lincoln Bluish (369). Very Fine mint	15.00
331	★		1c Green, Coil (387). Pair, 3mm spacing. Fine	8.00
332	★		2c Carmine coil (388). Pair, 3mm spacing, signed "Sloane". Very Fine (Photo)	80.00

1914 ISSUE TO DATE

43	333 ★	10c Panama-Pacific (404). Fine	(Photo)	57.50
100	334 ★	12c Copper Red (435a). Block. Fine		16.00
12	335 ★	3c Violet Coil (445). Pair, close at left. V. G.		40.00
950	336 ★	3c Violet Coil (456). Line Pair. Fine		27.50
8	337 ★	1c-3c Imperforates (481-83, 575-77, 631). Blocks. V. F.		16.85
3350	338 ★	\$2.00 Orange Red & Black (523). Very Fine	(Photo)	50.00
120	339 ★	1c, 3c Offset Imperforates (531, 535). Blocks. V. F.		16.50
375	340 ★	2c Pilgrim, 2c Aeronautics (549, 649). Plate No. Blocks of 6. V. F.		6.35
4	341 ★	1c-5c Commemoratives (614-619). Very Fine		7.50
9	342 ★	1½c-5c, 7c Nebr. (670-74, 676). Plate No. Blocks. V. G.-Fine		32.40
250	343 ★	16c Dark Blue, Farley (771). Bot. Plate No. Block of 6. V. F.		11.00
12	344 ★	Commems. & Airs. Cpl. Sets (859-93, 906, 909-21, C4-C6). Fine-V. F.		27.85

AIR MAILS

1250	345 ★	6c Orange, 24c Carmine Rose & Blue (C1, C3). Blocks, slight paper fold in first. Fine		35.00
875	346 ★	24c Carmine Rose & Blue (C3). Center Line Block, well centered, small stain on one stamp		37.50
625	347 ★	16c Green, 16c Dark Blue (C2, C5). Fine-V. F.		13.00
90	348 ★	65c-\$2.60 Graf Zeppelin (C13-C15). Set of Plate No. Singles. V. F. (Photo)		127.50
335	349 ★	65c-\$2.60 Graf Zeppelin (C13-C15). Set of Blocks. Very Fine	(Photo)	535.00
63	350	65c-\$2.60 Graf Zeppelin (C13-C15). Very Fine set on three cachet flight covers		125.00
32	351 ★	80c Hawaii Air (C46). Cpl. set of 8 Matched Plate No. Blocks. V. F.		48.00
33	352 ★	80c Hawaii Air (C46). Cpl. set of 8 Matched Plate No. Blocks. V. F.		48.00
12	353 ★	10c Green Spec. Del. (E7). Block of 8. Fine		30.00
2650	354 ★	2c-\$2.00 Shanghai (K1-K18). With extra shades K8a, K11a. Complete V. G.-V. F.		74.60

OFFICIALS, ENVELOPES

7	355 ★	1c, 10c, 15c, 30c Agriculture (O1, O5, O7, O9). Two O. G. Very Good-Fine		38.00
450	356 ★	10c Executive (O14). Very Good		22.50
6	357	15c, 30c Justice (O31, O33). Very Good		23.00
50	358 ★	24c Justice (O32). Part O. G. Fine		30.00

359	★	90c Justice (O34). Finely centered, one short perf.	47.50
360	★	7c, 24c Navy (O39, O43). Fine	31.00
361	★	2c, 7c, 12c, 15c State (O58, O61, O63-64). Very Fine	17.00
362		90c State (O67). Very Good	16.00
363	★	\$2.00 State (O68). Two short perfs. Fine appearance	50.00
364		5c, 10c Newspapers (PR2, 5, 8). V. G.-Fine	19.50
365	⊠	3c Red Entire (U1). Ms. cancel also Triangle, N. Y., str. line in large Triangle pmk. Fine. Scarce	—
366	⊠	3c Red Entire (U10). Tied with Northfield, M. T. pmk. Fine	—
367		3c Red (U10). Seven diff. shades cut squares, also entire with Nesbit, and entire with Double Impression. F.-V. F.	—
368	⊠	2c Brown Entire (U277). Tied from Sacramento, Cal., on illustr. adv. cover showing clothed Pig. V. F. (Photo)	—
369	⊠	1c-10c Envelopes. 19th & 20th, 38 entires unused, includes printed samples with prices, Specimen, Albinos, Freaks. V. F. lot	—
370	⊠	1c Brown, Postal Card (UX1). Very Fine Derby Hat cancel from Danbury, Conn. V. F. (Photo)	—

CARRIERS, LOCALS

371	⊠	1c Eagle Carrier (L02). Red Star cancel, not tied. V. F. <i>2-28</i>	25.00
372	⊠	1c Eagle Carrier (L02). Red Star cancel, not tied. Fine	25.00
373	⊠	Baltimore Carrier, 1c Red (1LB7). Neatly tied on cover with 3c Red #26, cut in badly at B	60.00
374	⊠	Baltimore Carrier, 1c Red tied with pencil cancel (1LB9), on cover with 3c Red (26), str edge copy tied with Baltimore pmk., neat cover	30.00
375	⊠	City Dispatch, Phila. 1c Black (41L1). Tied with neat grid on cover. V. F. <i>4250 Brown 13 28</i> (Photo)	25.00
376	⊠	Floyd's Penny Post, 1860, 1c Blue (68L1). Tied with Floyds Penny Post in fancy circle on attractive illustrated cover in blue. Very Fine <i>3 20 28</i> (Photo)	60.00
377	⊠	Hale & Co. 1844, 5c Blue (75L1). Tied with boxed "Hale & Co. Mail at Boston" cancel. Fine	10.00
378	⊠	Metropolitan, 1855-59, 1c Red Orange (107L1). Tied with Paid in octagon, "A. M. Hinkley & Cos. Express, New York" in oval on cover. V. F. <i>65 20 28</i> (Photo)	40.00
379		Wells Fargo \$2 Pony Express (143L1). Blue Pony Express cancel thin, nice appearance	35.00
380	⊠	Eastern Express Covers, two, Thompson & Co. yellow label, Bryant & Co., red label. V. G.	—
381	★ ⊠	1c Battleship Revenue (R163). Two Imprint Plate Blocks of 50. F.-V. F.	—

1350	382	☒	CONFEDERATE STATES, 1861-62, 5c Green, 10c Blue (1-2). Two covers, first tied, latter Ms. cancel. Fine	18.00
10	383	☒	—1862, 5c Blue (7), two tied on turned cover showing illustr. cover of Alabama Southern University on inside with badly damaged pair #4 with Ms. cancel. Interesting	—
725	384	☒	—1863-64, 10c Blue (11-12). Three covers all tied one in red. Fine	—
115	385	☒	—Charleston, S. C., Ashboro, N. C., Mc Leansville, N. C., 3 handstamp paid, latter Ms. Fine	—

U. S. MISC. LARGE LOTS

17	386	☒	<i>15 good</i> Covers, Stampless to 1893 Issue, 92 covers. Fair-Fine	—
17	386A	★	1857-1940 Postage Issues, 111 stamps, wide variety, some without gum. Est. Cash Val. \$17.50	—
1450	387	☒	Covers, 1870 to Date, 143 covers includes corner cards, flight covers, commems, etc. Fair-Fine	—
1250	388		Cancellations & Guide Lines. Approx. 800 stamps 19th & 20th. Est. Cash Val. \$20.00	—
1050	389	☐	Used Blocks, 19th & 20th, 146 blocks includes duplication. Fair-V. F.	—
5	390	☒	First Day Covers. Airs & Commems. 65 diff. cachet covers. V. F.	—
10500	391	☒	FIRST DAY COVERS. Collection in 7 Specialty Cover Albums, approx. 725 covers Commems. and Airmails, many blocks all on large "Collectors Surplus cachet envelopes, over \$100.00 face postage on covers. V. F. lot	—
95	392		Collection of Cut Square Envelopes, Telegraphs, Imperf. Civil War Revenues P. O. Seals, etc. diff. also a few covers, used and unused. Fine lot Est. Cash Val. \$95.00	—
17	393		Misc. U. S. Wholesale includes Revenues ,about \$8.00 face value War Saving Stamps, Telegraphe, etc. Est. Cash Val. \$25.00	—
15	393A		Officials, Newspapers, Locals, Confederates etc. approx. 200 stamps. Est. Cash Val. \$13.00	—
25	394		Cut Squares, mainly 1c-2c 1903 Issue, large manila envelope full	—
2550	394A		Revenue Stamp Paper, a large carton, several thousand, mostly checks. Est. Cash Val. \$50.00	—
20	395		Match & Medicine Collection. 170 mostly diff. also few misc. tax stamps. Est. Cash Val. \$17.50	—
1050	396	★	Xmas Seals. 1908-39 complete plus misc. lot of seals	—
16	397		Postage Currency, Confederate Money, Columbian Exp. Tickets, etc. 46 pieces	—
32	398		Misc. U. S. & Foreign in two boxes, includes mint blocks, covers etc. Est. Cash Val. \$30.00	—


U. S. WHOLESALE

(NO STRAIGHT EDGES IN LOTS UNLESS NOTED)

399	1c Blue #9(2), 24(8), in pairs, latter unused, mostly defective	50.50
400	3c Red #25 (12). Fine lot	27.00
401	3c Red #26 (200). V. G.-V. F.	30.00
402	3c Red #26 (200). V. G.-V. F.	30.00
403	3c Red #26 (200). V. G.-V. F.	30.00
404	3c Red #26 (200). V. G.-V. F.	30.00
405	2c Brown, 3c Ultramarine #113(10), 114(38). V. G.-F.	33.90
406	1c Ultramarine #134(9). Includes one pair. Fine	46.00
407	2c Red Brown #135(15). Includes one pair. V. G.-V. F.	34.25
408	6c Banknotes #148(24), 159(30). V. G.-Fine	46.50
409	6c Dull Pink #159 (60). Includes some canc. Also multiples. Fine	33.00+
410	12c Blackish Violet #162 (12). Fine	51.00
411	15c Yellow Orange #163 (9). V. G.-V. F.	54.00
412	30c Gray Black #165 (6). Fine	24.00
413	15c Red Orange #189 (13). Fine	17.55
414	30c Black #190 (14). Fine	31.50
415	2c Red Brown #210 (7,000). V. G.-V. F.	140.00
416	30c Orange Brown #217 (12). V. G.-Fine	60.00
417	3c-30c Columbian #232-239 (32 stamps) from 3 to 6 of each. V. G.-V. F.	60.00
418	50c Orange, \$1.00 Black #275-76. (4 each). Good-Fine	36.00
419	1c-10c Trans-Miss. #285(6), 286(8), 287-290 (3 each). V. G.-V. F.	27.49
420	1c-10c Pan-American. #294(4), 295(7), 296(4), 297(7), 298(2), 299(5). V. G.-V. F.	40.46
421	3c, 6c, 13c-\$1.00, 1902-03 Issue #302, 305, 308-311 (36 stamps). V. G.-V. F.	33.15
422	1c-10c Louisiana-Purchase #323(2), 324-25 (6 each), 326(5), 327(3). V. G.- V. F.	56.20
423	50c Violet #341 (29). V. G.-V. F.	50.75
424	1c-\$1.00, 1908-17 Issues (545 stamps). V. G.-V. F.	79.80
425	1c-10c Commems. 1912-30 Issues (131 stamps). V. G.-V. F.	38.99
426	1c-5c Pilgrim. #548(8), 549(9), 550(8). V. G.-V. F.	25.08
427	1/2c-\$5.00. 1922-38 Issues. (891 stamps). V. G.-V. F.	63.50

1250	428	田	1c-10c Commems. 1930-51 Issues (176 used Blocks). Fine-V. F.	—
41-	429		1c-10c Commems. 1932-52 Issues (6,332 stamps), includes nearly thousand Famous Americans. V. G.-V. F.	—
21-	430		Commemoratives, 1933-40 Issues #726(97), 730a(20), 731a(21), 733(10), 736(10), 740-49 (129 stamps), 836(100), 837(103), 894(106). V. G.-V. F.	—
8-	431		1c, 3c, 4c Parks Farley #756(64), 758(40), 759(48), all in used blocks. F.-V. F.	21.20
1450	432		1c-10c Park Farley, S. P. A. Cipex #756-65 (165 stamps), #797(41), 948(11). Fine-V. F.	31.40
1150	433	★	16c Farley #771 (15). Includes 2 blocks. V. F.	20.25
14-	434	★	10c S. P. A. Souvenir Sheet #797 (100). V. F.	25.00
14-	435	★	10c S. P. A. Souvenir Sheet #797 (100). V. F.	25.00
16-	436		5c Flags #909-921. (379 stamps). Fine-V. F.	—
1650	437	★	1c-5c Roosevelt, Cipex Sheets #930-33 (20 sets). #948 (91 Sheets). V. F.	27.35
16-	438		6c-24c Airs. # C1(4), C2(5), C3(7). V. G.-V. F.	55.00
2450	439		5c-50c Airs 1923-49 Issues, Bet. #C4-C45 (965 stamps). V. G.-V. F.	56.44
950	440		15c Airmail #C35 (1,000). V. G.-V. F.	100.00
1350	441		U. S. Packets. 350 Different (3). 500 Different (2)	—

BRITISH COLONIES

31-	442	★	ADEN, 1937, ½a-10r (1-12). Cpl. set. Very Fine  (Photo)	72.30
6-	443	★	ANTIGUA, 1921-29, 1/-5/ (53-55, 60-63). Fine-V. F.	18.00
11-	444	★	—1921-29, 2/-£1 George V (61-64). F.-V. F.	32.50
775	445	★	BAHAMAS, 1901-11, ½p-5/ Edwards (33-42, 44-47). Fine-V. F.	33.90
775	446		BARBADOS, 1873, 5/ Dull Rose (43). Small thin. V. F. appearance	50.00
375	447	★	—1882-1903, 3p, 1/, 2/6 (63, 63a, 67, 80). Fine-V. F.	19.50
475	448		—1897, 1f-10p Jubilee (81-88). Fine-V. F. used	20.95
10-	449	★	—1904-07. 1f-2/6 (101-112). Four are used. Fine-V. F.	31.15
750	450	★	—1912, 1p-2/ George V (118-125). Very Fine	24.50
250	451	★	—1912, 3/ George V (126). Very Fine <i>150 seen 709</i> (Photo)	17.50
14-	452	★	—1916-18, 2½p-3/ (131-139). Very Fine	(Photo) 40.50
625	453		—1920, ¼p-3/ Victory (140-150). Last two unused. Fine	23.20
850	454	★	BASUTOLAND, ½p-10/ Geo. V (1-10). Cpl. set. Very Fine	24.10
425	455	★	BERMUDA, 1917-20, 2/-5/ Geo. V (49-52). Fine-V. F.	15.75

456 ★	—1917-20, £1 George V (54). Very Fine <i>2.00</i> <i>6</i>	18.00
457	—1936-38, 2p, 2/, 2/6, 12/6 #109(6), 123, 123a, 124, 127, all used. F.-V.F.	35.00
458	BRITISH AMERICA , 889 different in Scott Specialty Album, strong in George V issues, mainly unused, nothing after 1937. Fine lot. Est. Cash Val. \$125.00	—
459 ★	BRIT. COLUMBIA & VANCOUVER IS. , 1861, 2½p Dull Rose (2), wide margin at left. Fine	22.50
460 ★	—1867-69, 5c on 3p, 25c on 3p (9, 11). Fine	22.00
461 ★	—1869, 10c on 3p Lilac Rose (15). Fine (Photo)	55.00
462 ★	—1869, \$1.00 on 3p Green (18). Fine (Photo)	85.00
463	BRITISH HONDURAS , 33 diff. 19th & 20th, used and unused. V.G.-V.F.	35.80

CANADA

464	1851, 3p Red (1). Margins 3 sides, close at R. Fine	35.00
465	1851, 6p Grayish Purple (2). Margins all around, light crease. V.F. appearance (Photo)	65.00
466	1852, 3p Red (4). Blue target cancel. Fine	12.00
467	1855, 10p Blue (7) . Very Fine <i>42.50</i> <i>sf</i> (Photo)	70.00
468	1855, 10p Blue (7) . Very Fine <i>41</i> <i>sf</i> (Photo)	70.00
469	1857, ½p Rose (8). Barely cancelled. Fine (Photo)	30.00
470	1857, ½p Rose (8). Fine	30.00
471	1858-59, ½p Rose (11). Two short perfs. Finely centered (Photo)	50.00
472 ★	1858-59, 3p Red (12). Faults, nice appearing	100.00
473	1859, 17c Blue (19). Very Fine <i>7.50</i> <i>sf</i>	12.50
474	1859, 17c Blue (19). Very Fine	12.50
475 ★	1859, 17c tBlue (19). Well centered, few short perfs	40.00
476	1859, 17c Blue (19). Very Fine <i>8</i> <i>sf</i>	12.50
477 ★	1864, 2c Rose (20). Very Fine (Photo)	22.50
478 ★	1868-72, ½c Black, 2c Green (21, 36). Strip of 3 of each, latter has interesting offset on back. V.F.	—
479 ★	1868-97, ½c-15c Victoria (21, 25, 28-30, 28b). Three without gum. Fine lot	45.50
480 ★	1868-97, 1c Brown Red (22). Very Fine without gum	13.50
481	1868-97, 1c Red Brown (22). Five copies. V.F. lot	20.00
482	1868-97, 1c Victoria (23, 23a). Three shades. Very Fine	17.50
483	1868-97, 2c-3c, 6c Victoria (24-25, 27). Nine stamps, includes red cancel pair. V.F. lot	15.90

1550	484 ★	1875, 5c Olive Green (26). Very Fine	(Photo)	20.00
475	485 ★	1875, 5c Olive Green (26). Centered to top, part O. G. Fine		20.00
14	486	1875, 5c Olive Green (26). Four copies. V.F.		24.00
5	487	1875, 5c Olive Green (26). Horiz. Pair, lightly cancelled. Fine		12.00
7	488 ★	1868-97, 12½c Blue (28). Very Fine		10.00
42	489 ★田	1868-97, 15c Gray Violet (29). Block. Fine		10.00+
17	490	1868-97, 15c Victoria (29-30). Fifteen copies includes shades, pair. Fine-V.F.		32.50
5	491 ★	1868-97, 15c Victoria (29b, 30, 30b). Fine		23.00
475	492	1868, 3c Bright Red, Laid Paper (33). Fine		20.00
3	493 ★田	1882, ½c Black (34). Block of 30. Very Fine		7.50+
850	494 ★	1870-89, 1c, 2c, 5c, 6c (35-36, 38-39). Very Fine, two shades of each		18.90
625	495 ★	1882, 1c Orange (35a). Very Fine		12.00
6	496 ★	1882, 1c Orange (35a). Very Fine		12.00
1150	497 ★	1870-93, 2c-20c (36, 38, 40, 42, 44-46). Three extra shades, four without gum. Fine lot		39.50
8	498 ★田	1888-93, 6c Red Brown (43). Block of 9. Fine		22.50+
1250	499 ★田	1888-93, 8c Blue Gray, 10c Brown Red (44a-45). Blocks heavy hinging. V. G.		36.00+
85	500 ★	1888-93, 5c-10c (42-45). Very Fine		11.75
750	501	1897, \$1.00 Jubilee (61). Perfs. just touch at top		18.00
41	502 ★	1897, \$3.00 Jubilee (63). Superb	(Photo)	55.00
43	503 ★	1897, \$5.00 Jubilee (65). Superb	(Photo)	60.00
525	504 ★	1897-1932, ½c-10c Victoria, 1c-3c Booklet Panes (61-73, 104b, 105a, 195b, 196b, 197a). Fine-V.F.		21.80
625	505 ★	1897-1902, ½c-10c Queen Victoria, 21 stamps (between 66-88). Fine-V.F.		29.05
125	506 ★田	1912-25, 1c-50c George V (105-06, 108, 10, 12, 17, 19-20, E2). Blocks. V. G.-V.F.		23.28
6	507 田	1930-32, 5c, 6c Air (C2, C4). Used block of first, latter two mint blocks. Fine		17.20
10	508 ★	1875-89, 8c Blue Registration (F3). Without gum. Very Fine		17.50
41	509	Collection , 241 diff. Canada, 19th & 20th, used and unused, mostly V. G.-V.F.		191.00
5	510 ★	CAYMAN IS. , 1932 1p-1/ Centenary (71-77). V. F.		14.95
525	511 田	—1938, 10/ George VI (111). Used blocks. V. F.		15.00
450	512 ★	DOMINICA , 1914, 5/ George V (54). Very Fine		12.50

513 ★	FALKLAND ISLANDS, 1933, 5/ Centenary (74). Very Fine ^{1500 Isen} (Photo)	40.00
514 ★	—1933, £1 Centenary (76). Very Fine ^{4250 Isen} (Photo)	135.00
515 ★	FALKLAND, IRISH, ST. SETTLEMENTS, 126 diff. 20th Century. Fine-V. F.	47.58
516	GOLD COAST, MALTA, 45 diff. 19th & 20th, used and unused. V. G.-V. F.	60.15
517 ☒	GREAT BRITAIN, 1840, 1p Black (1). Margins all around tied on cover, Walthamstow W. O. black str. line pmk on cover	9.00+
518	—1878, £1 Brown Lilac (75). Centered to L. Fine	55.00
519	—Used Abroad, 7 diff. Porto Rico, Jamaica, St. Lucia, St. Thomas, Barbados, over £22 cat. val. in Gibbons. Fair-Fine	—
520	JAMAICA, 1919-22, 5/, 10/ Geo. V (86-87). Very fine used	20.50
521 ★	—1921-23, 6p-3/, 10/ (95-98, 100). V. F.	18.50
522 ★	—1923, ½p-2½p Semi-Postals (B1-B3). V. F. set	9.50
523 ★	LEEWARD ISLANDS, 1890, 1/-5/ Victoria (7-8). Very Fine	17.50
524 ★	—1902, 2/6-5/ Edward (27-28). Very Fine	11.00
525 ★	—1928, 10/ George V (82). Very Fine	12.00
526	MAURITIUS, 61 diff. 19th & 20th, used and unused. V. G.-V. F.	51.45
527 ★	MONTSERRAT, 1903, ½p-2/ (12-19). Fine-V. F.	18.15
528	NEW BRUNSWICK, 1851, 3p Red (1). Fine	20.00
529	—1851, 3p Red (1). Very Fine ^{7.00 Isen}	20.00
530	—1851, 6p Olive yellow (2). Paid cancel. V. F.	60.00
531 ☐	—1860-63, 10c Vermilion, India Proof (9P). Block. V. F.	—
532	NEW BRUNSWICK, NOVA SCOTIA, PRINCE EDWARD IS., 29 mostly diff. used and unused. V. G.-Fine	80.00

NEWFOUNDLAND

533 ★	1857, 1p Brown Violet (7). Very Fine	10.00
534 ★	1857, 1p Brown Violet (1). Horiz. pair. Very Fine	20.00+
535 ★	1857, 8p Scarlet Vermilion (8). Horiz. pair, bright. Very Fine (Photo)	70.00+
536 ★	1860, 2p Orange (11). Fine (Photo)	50.00
537 ★	1860, 5p Violet Brown (12A). Horiz. pair. Very Fine	20.00+
538	1862-63, 1/ Rose (23). Very Fine	25.00
539 ★	1862-63, 2p Rose (17). Fine	30.00
540 ★	1865-94, 13c Orange (30). Very Fine ^{350 Isen}	8.00

870	541 ★	1870, 3c Vermilion (33). Part gum. Very Fine	20.00
42	542	NEWFOUNDLAND , 34 mostly diff. 19th & 20th. V. G.-V. F.	145.00
19	543	NOVA SCOTIA , 1851-53, 1p Red Brown (1). Fine <i>1.00</i> (Photo)	50.00
950	544	—1851-53, 3p Blue (2). Very Fine <i>4.50</i> <i>Iron</i> <i>2.00</i> <i>1.00</i>	12.50
46	545 ★	—1851-53, 6p Yellow Green (4). Very Fine	(Photo) 125.00
63	546	—1851-53, 1/ Reddish Violet (6). Margins except at one corner where it just touches. Scarce	(Photo) 275.00
550	547 ★	—1860-63, 1c-10c (8, 8a, 9, 11-12). Blocks , extra shade on #9. Fine-V. F.	21.60
575	548 ★	—1860-63, 8½c Green (11a). White Paper, block. Fine, scarce	28.00+
19	549 ★	ST. HELENA , 1934, 10/ Centenary (110). Very Fine <i>1.00</i> <i>1.50</i> (Photo)	45.00
175	550 ★	ST. KITTS-NEVIS , 1922, £1 George V (36). Very Fine <i>1.40</i> <i>Iron</i> <i>1.50</i>	40.00
27	551 ★	—1923, 10/ Tercentenary (62). Very Fine	(Photo) 60.00
10	552 ★	—1923, 5/ Tercentenary (63). Very Fine	22.50
66	553 ★	—1923, £1 Tercentenary (64). Very Fine <i>4.50</i> <i>Iron</i> (Photo)	120.00
5	554 ★	ST. LUCIA , 5/-10/ Victoria (38-39). Very Fine	16.00
1550	555	SARAWAK, SEYCHELLES, TONGA , 110 diff. 19th & 20th, used and unused. V. G.-V. F.	78.00
11	556 ★	SIERRA LEONE , 1933, 5/ Wilberforce (163). Very Fine	35.00
18	557 ★	—1933, 10/ Wilberforce (164). Very Fine <i>1.9</i> <i>1.00</i> (Photo)	45.00
57	558 ★	—1933, £1 Wilberforce (165). Very Fine <i>37.50</i> <i>Iron</i> <i>4.00</i> (Photo)	110.00
875	559 ★	TRINIDAD & TOBAGO , 1922-28, 5/-£1 George V (30-31). Latter perfs. in at R. first V. F.	35.00
850	560 ★	TURKS & CAICOS , 1900, 2/-3/ (8-9). Fine	25.00
850	561 ★	—1909-16, 4p-3/ Edward, ¼p-3/ George V (18-35). Fine-V. F.	25.27
475	562 ★	—1928, 2/-10/ George V (68-70). Very Fine	13.50
550	563	—1938, 6p George VI (85). Ten used copies. V. F.	20.00
1350	564	ZANZIBAR , 75 diff. 19th & early 20th, used and unused. Fine lot	57.52
15	565	BRIT. COLONIES , 108 diff. 19th & 20th, used and unused. V. G.-V. F.	153.00
30	566	BRIT. COLONIES , 325 diff. used and unused, 19th & 20th, high cat. value. Est. Cash Val. \$30.00	—

FOREIGN

27	567 ★	CAROLINE ISLANDS , 1900-05, 5m Slate & Carmine (19). Block . V. F.	90.00
3200	568	COLUMBIA, DOMINICAN REP., URUGUAY , 984 diff. 19th and 20th, up to 1920, used and unused. Good-Fine. Est. Cash Val. \$50.00	—

569	COSTA RICA , 162 diff. 19th & 20th, used and unused. V. G.-V. F.	83.00
570	CUBA , 326 diff. up to 1920, used and unused. Good-Fine. Est. Cash Val. \$25.00	—
571	ECUADOR , 146 diff. all 19th, used and unused. Fine lot	110.00
572 ★	GERMANY , 1900, 2pf-3m (54-64). Very Fine	31.50
573 ★	—1900, 5m Slate & Carmine (65A). Very Fine	(Photo) 40.00
574	GUATEMALA , 1871-1924, 179 diff. mainly unused. Fine-V. F.	85.73
575	—1871-1922, 93 diff. used and unused. F.-V. F.	53.60
576 ★	MARIANAS IS. , 1916, 5m Slate & Carmine (31). Block. Very Fine	14.00
577	PHILIPPINES , 107 diff. 1899-1932 Issues, used and unused. V. G.-V. F.	120.22
578	SAMOA , 1914, ½p-9p (101-109). Each with First Day cancel. V. F.	44.25
579	✉ SARDINIA , 1820, Cavallini 50c, straight line "Finale". V. F.	—
580	SOUTH & CENTRAL AMERICA , several thousand including duplicates, used and unused, partly mounted. Est. Cash Val. \$45.00	40.00 <i>guilford</i>
581	SO. & CENTRAL AMERICA , over 2200 diff. plus some duplication, 19th & 20th, used and unused. V. G.-V. F. Est. Cash Val. \$40.00	35.00 <i>guilford</i>
582	✉ SPAIN , 1856, 2r Brown Lilac (47). Pair tied on cover to Phila. Fine	—
583	VENEZUELA , 90 early 19th Century. Est. Cash Val. \$12.50	—
584	WORLD COLLECTION, U. S. & Foreign , all 19th, mounted in 1901 International Postage Stamp Album, used and unused, several thousand all diff. Est. Cash Val. \$125.00	100.00 <i>guilford</i>

END OF SALE

THANK YOU

SELLING YOUR COLLECTION ?

**REALIZE IMMEDIATE CASH
AND HAVE ADVANTAGE OF SELLING AT AUCTION.**

I will advance on your collection immediate cash up to 75% of my appraisal value of what it should realize at auction.

It will then be sold at one of my coming auction sales. Commission is 20% of the gross and final settlement within thirty days after the sale.

Send collection direct (valued \$500 upwards) for appraisal. Auction advance will be sent within 48 hours after receipt. If not entirely pleased, collection will be returned at my expense.

I have been conducting stamp auctions for 23 years.



ROBERT A. SIEGEL

(Licensed and Bonded Auctioneer)

505 FIFTH AVENUE

NEW YORK CITY

(Tel. MU. 2-4309)